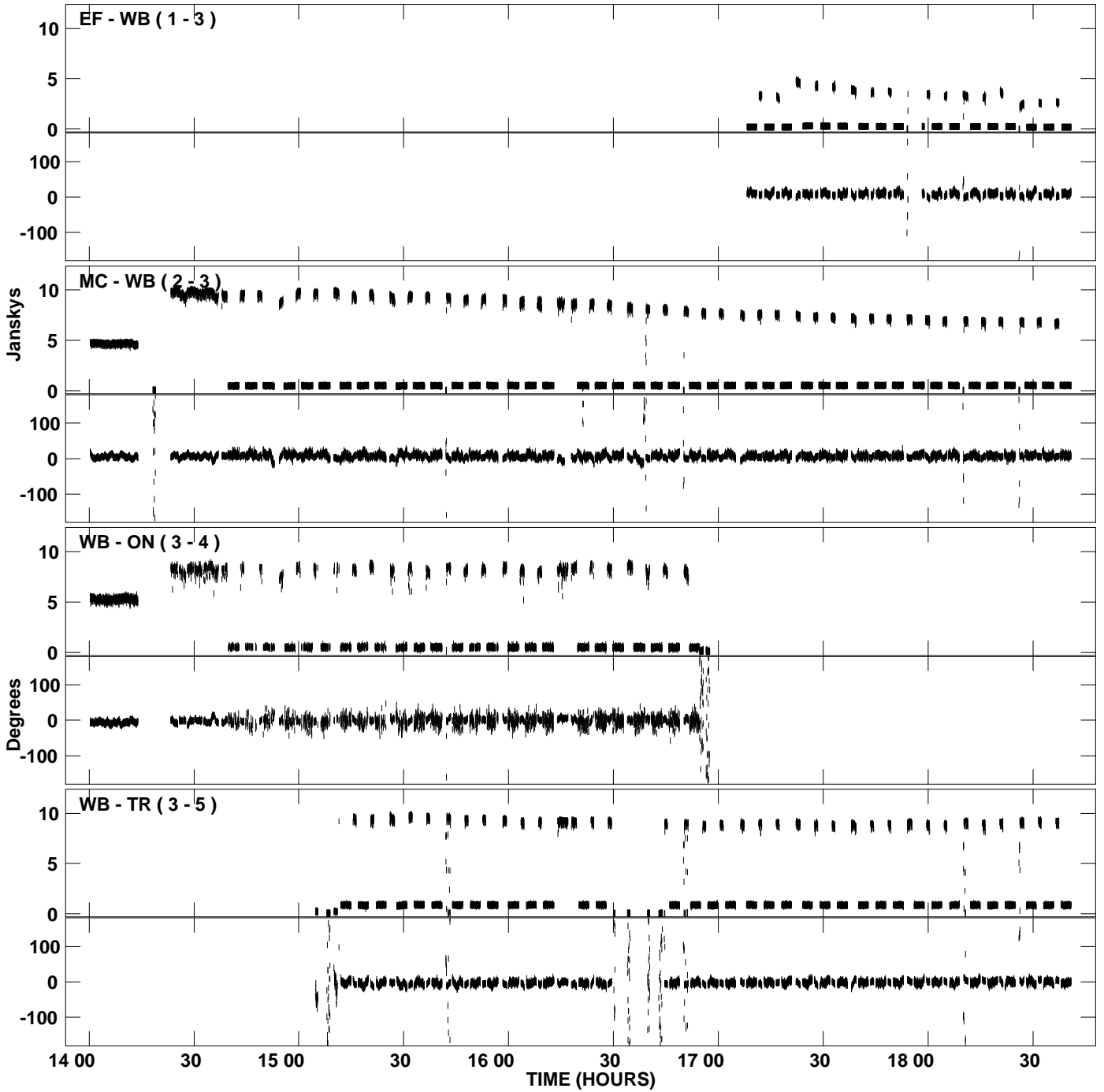
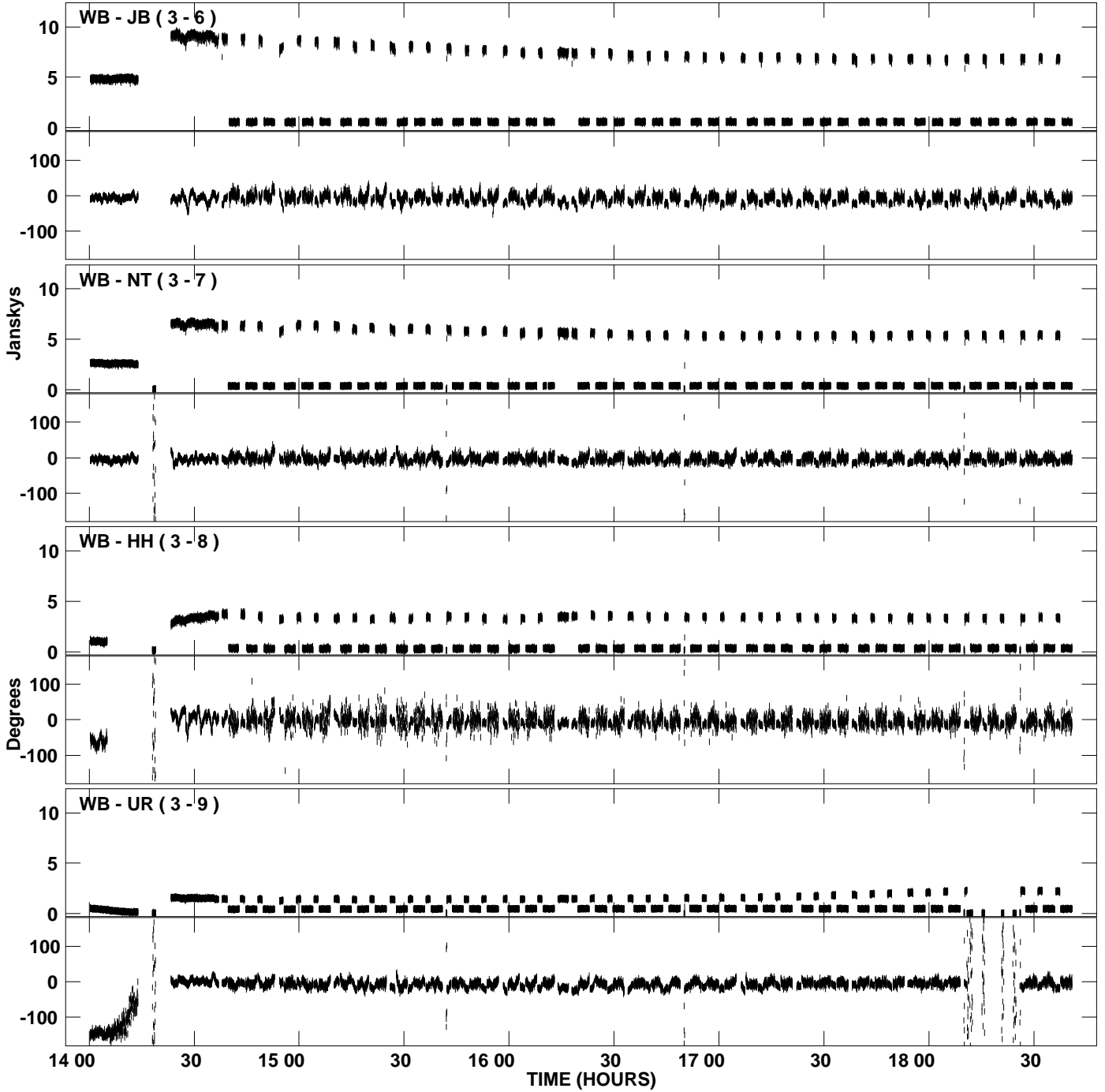


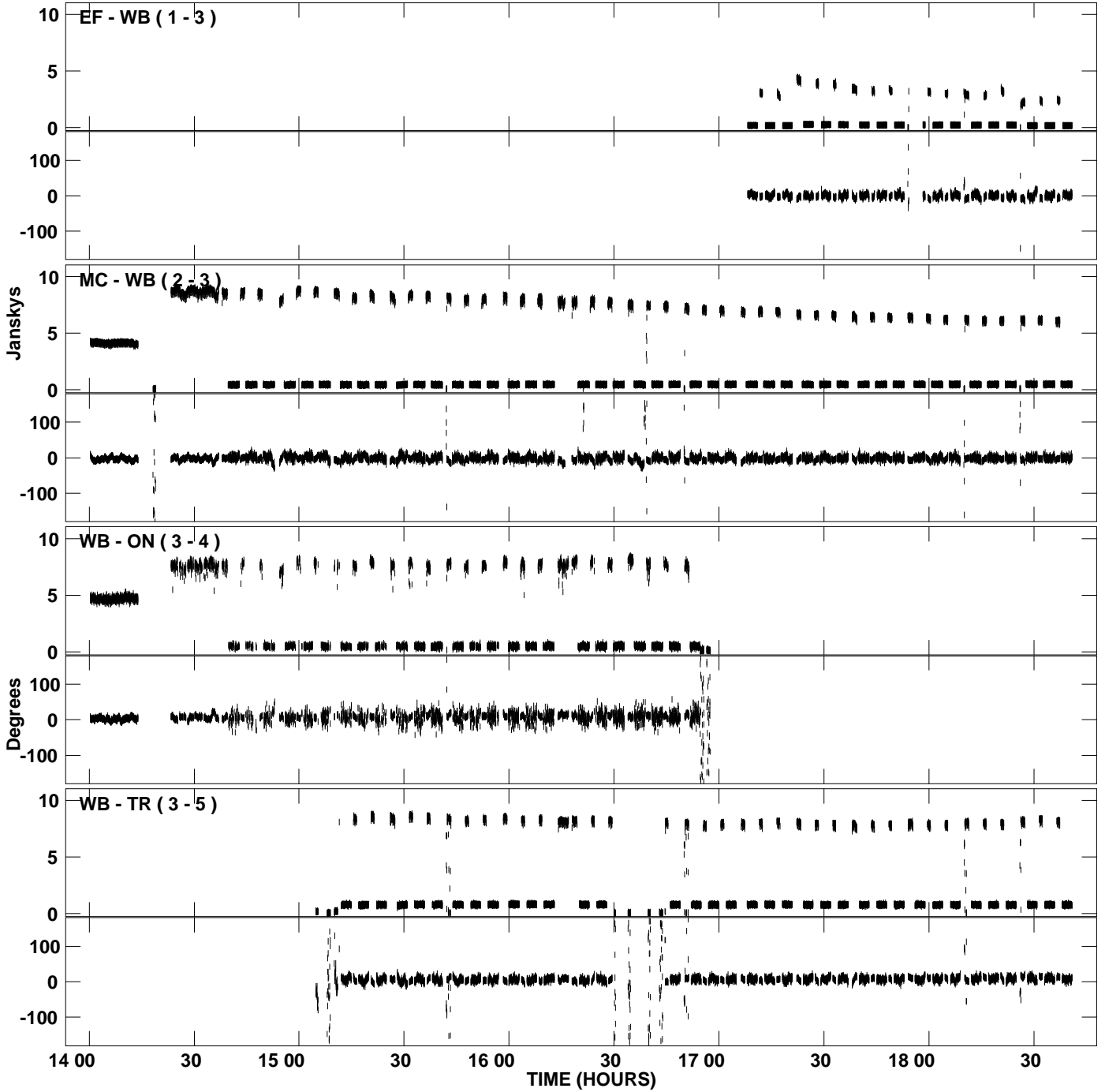
PLot file version 1 created 06-FEB-2007 16:41:43  
Amplitude and Phase vs Time for N06C3 2.UVDATA.1 Vect aver. CL # 3  
IF 1 CHAN 1 - 16 STK LL



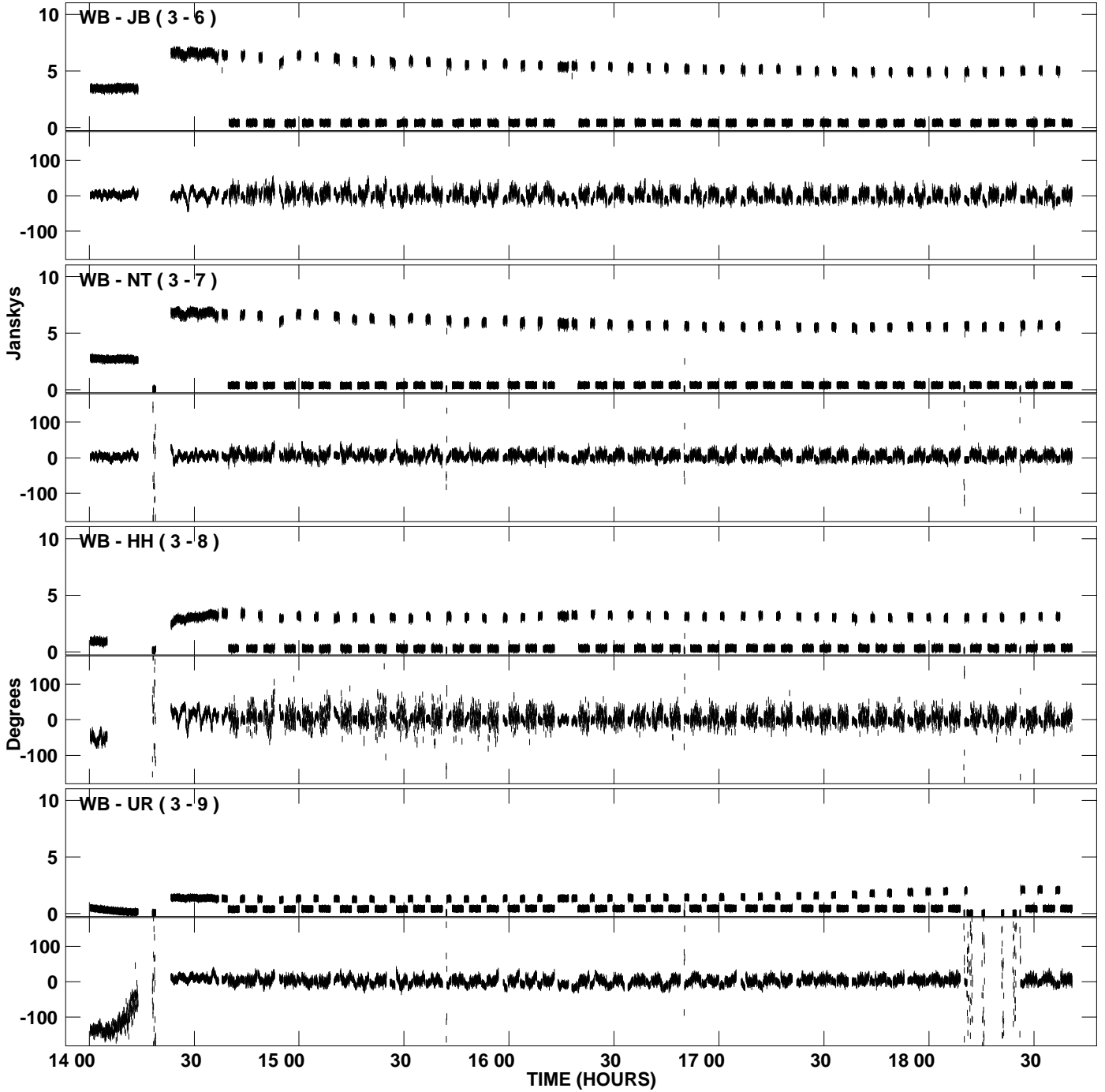
PLot file version 2 created 06-FEB-2007 16:41:43  
Amplitude and Phase vs Time for N06C3 2.UVDATA.1 Vect aver. CL # 3  
IF 1 CHAN 1 - 16 STK LL



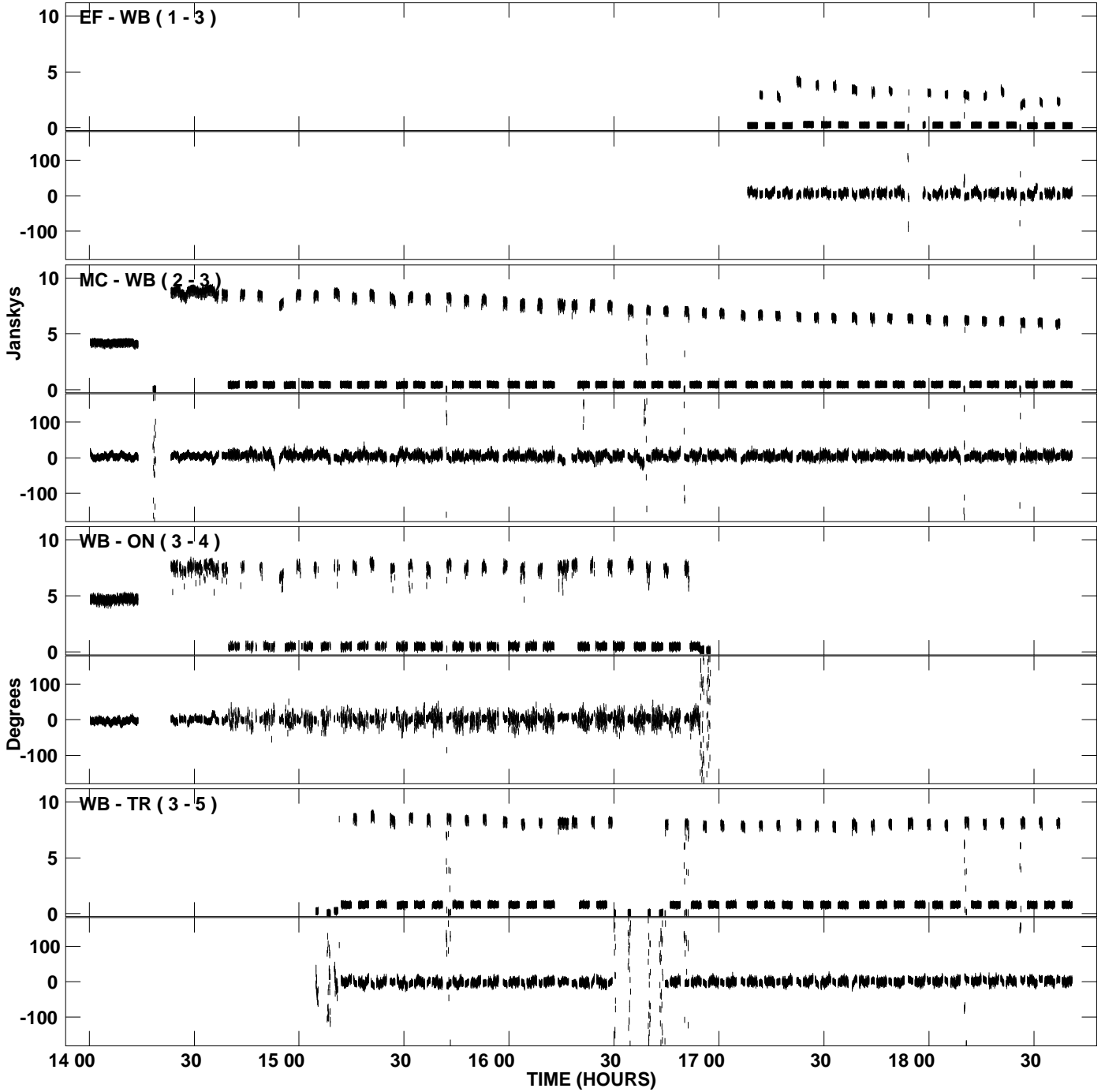
PLot file version 3 created 06-FEB-2007 16:41:51  
Amplitude and Phase vs Time for N06C3 2.UVDATA.1 Vect aver. CL # 3  
IF 2 CHAN 1 - 16 STK LL



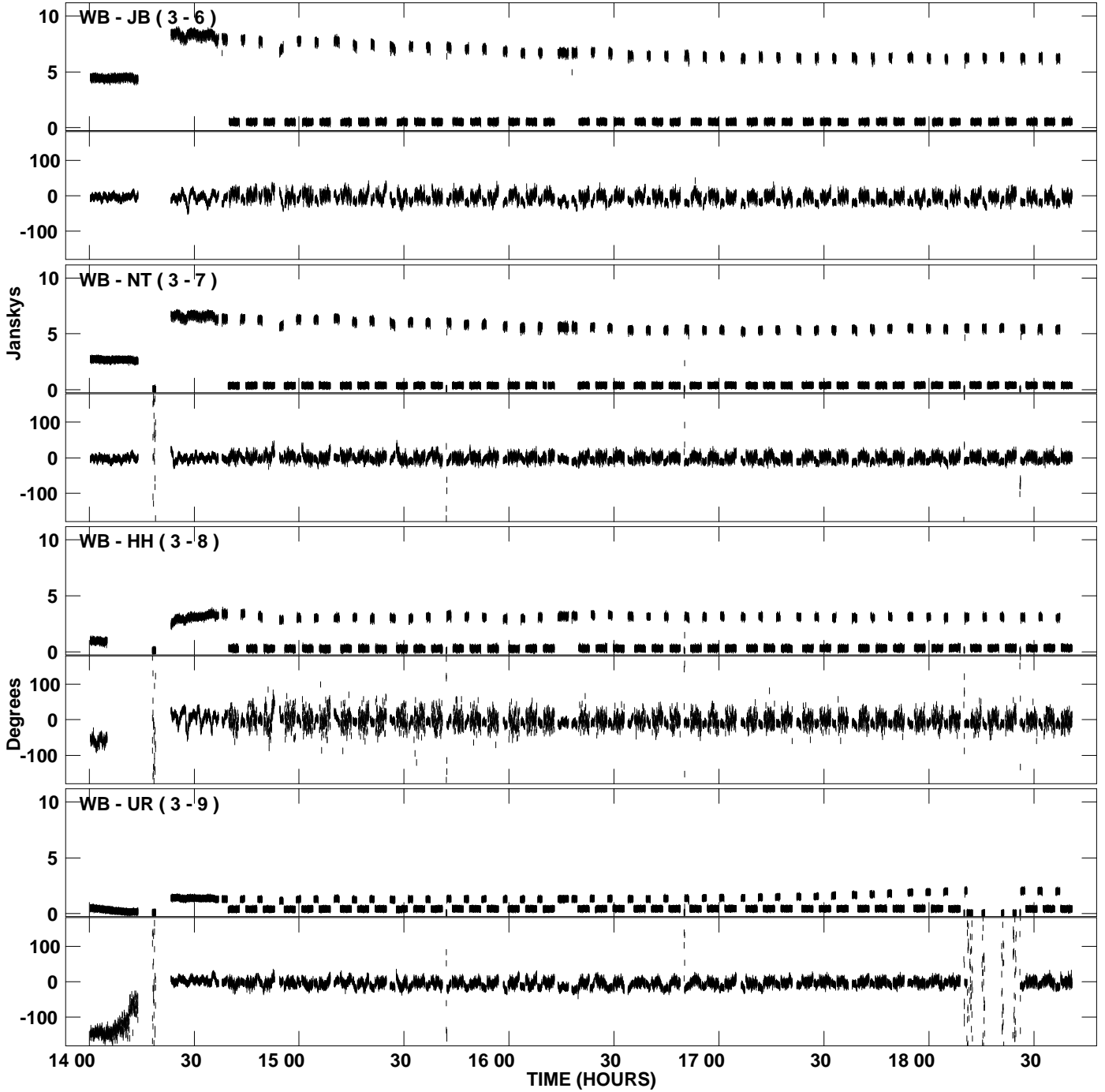
PLot file version 4 created 06-FEB-2007 16:41:51  
Amplitude and Phase vs Time for N06C3 2.UVDATA.1 Vect aver. CL # 3  
IF 2 CHAN 1 - 16 STK LL



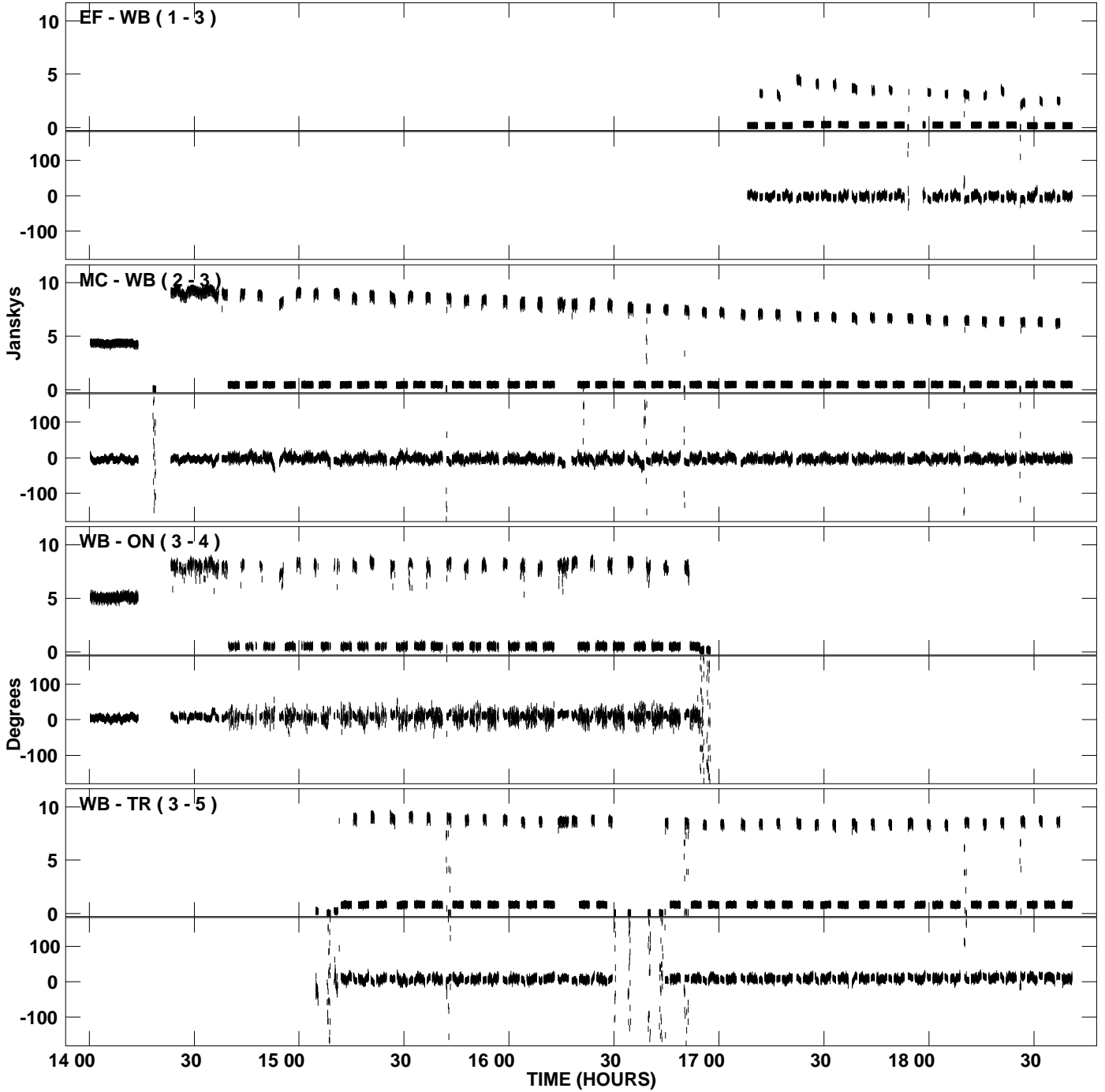
PLot file version 5 created 06-FEB-2007 16:42:02  
Amplitude and Phase vs Time for N06C3 2.UVDATA.1 Vect aver. CL # 3  
IF 3 CHAN 1 - 16 STK LL



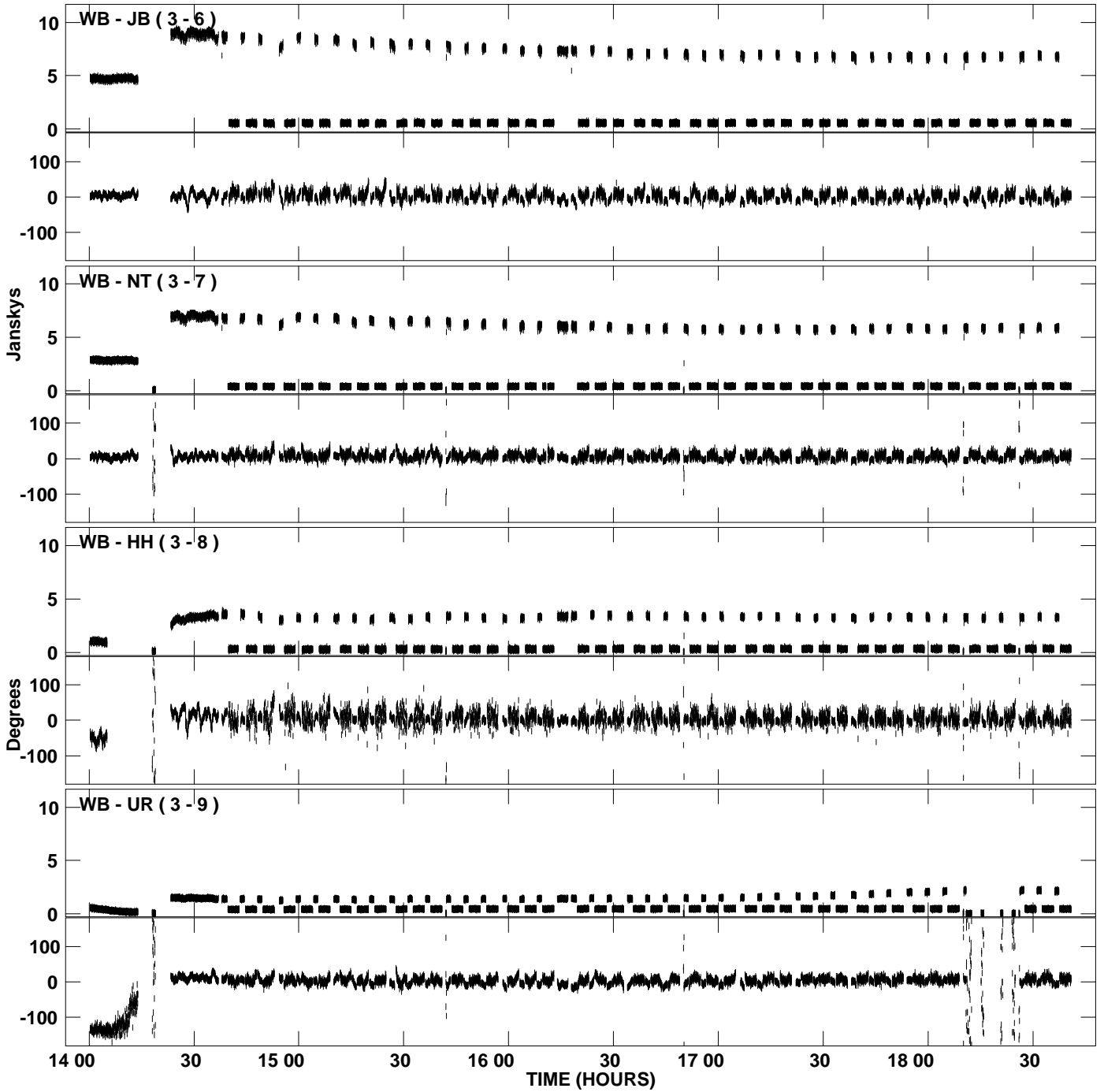
PLot file version 6 created 06-FEB-2007 16:42:02  
Amplitude and Phase vs Time for N06C3 2.UVDATA.1 Vect aver. CL # 3  
IF 3 CHAN 1 - 16 STK LL



PLot file version 7 created 06-FEB-2007 16:42:12  
Amplitude and Phase vs Time for N06C3 2.UVDATA.1 Vect aver. CL # 3  
IF 4 CHAN 1 - 16 STK LL

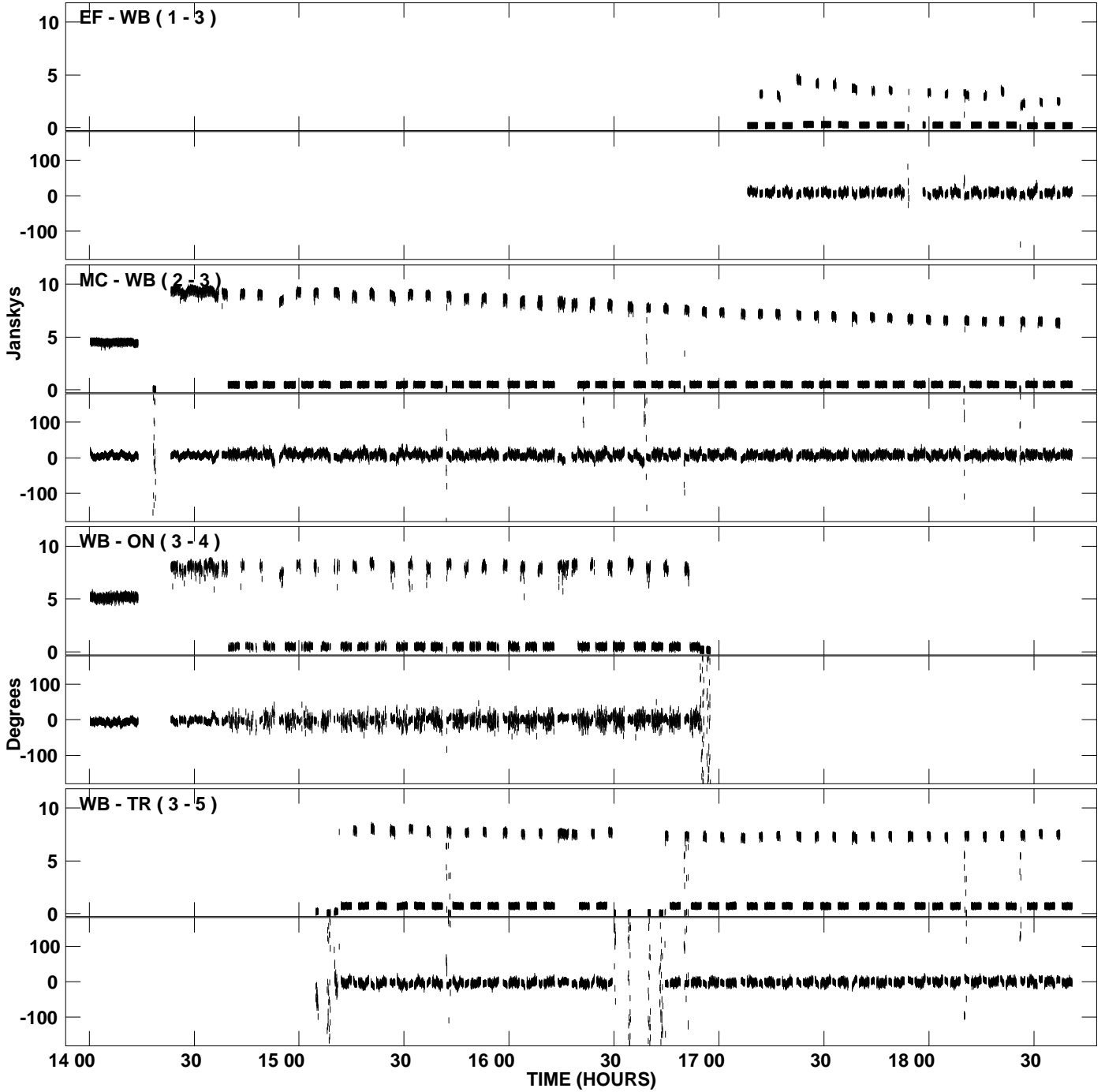


PLot file version 8 created 06-FEB-2007 16:42:12  
Amplitude and Phase vs Time for N06C3 2.UVDATA.1 Vect aver. CL # 3  
IF 4 CHAN 1 - 16 STK LL

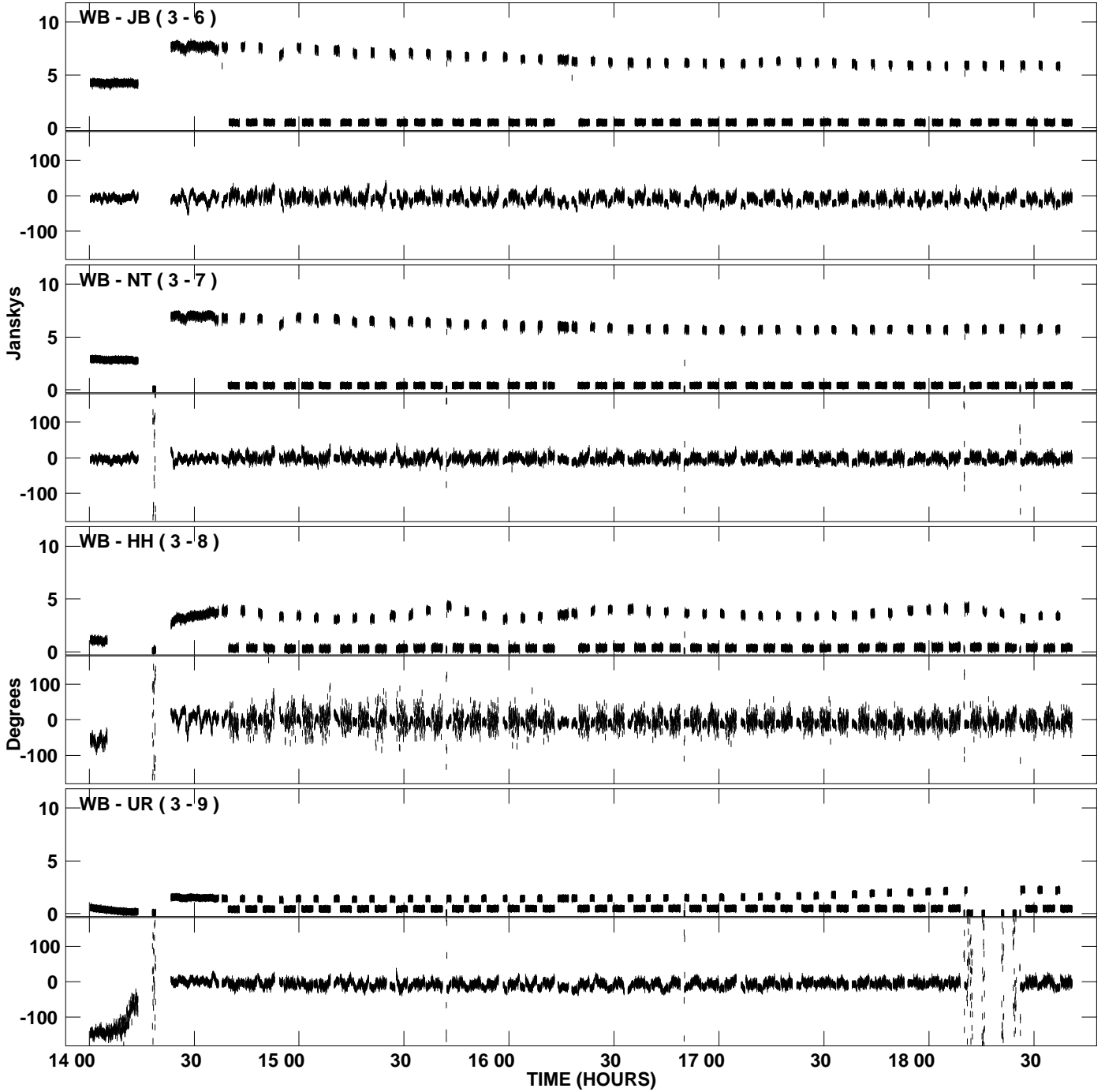




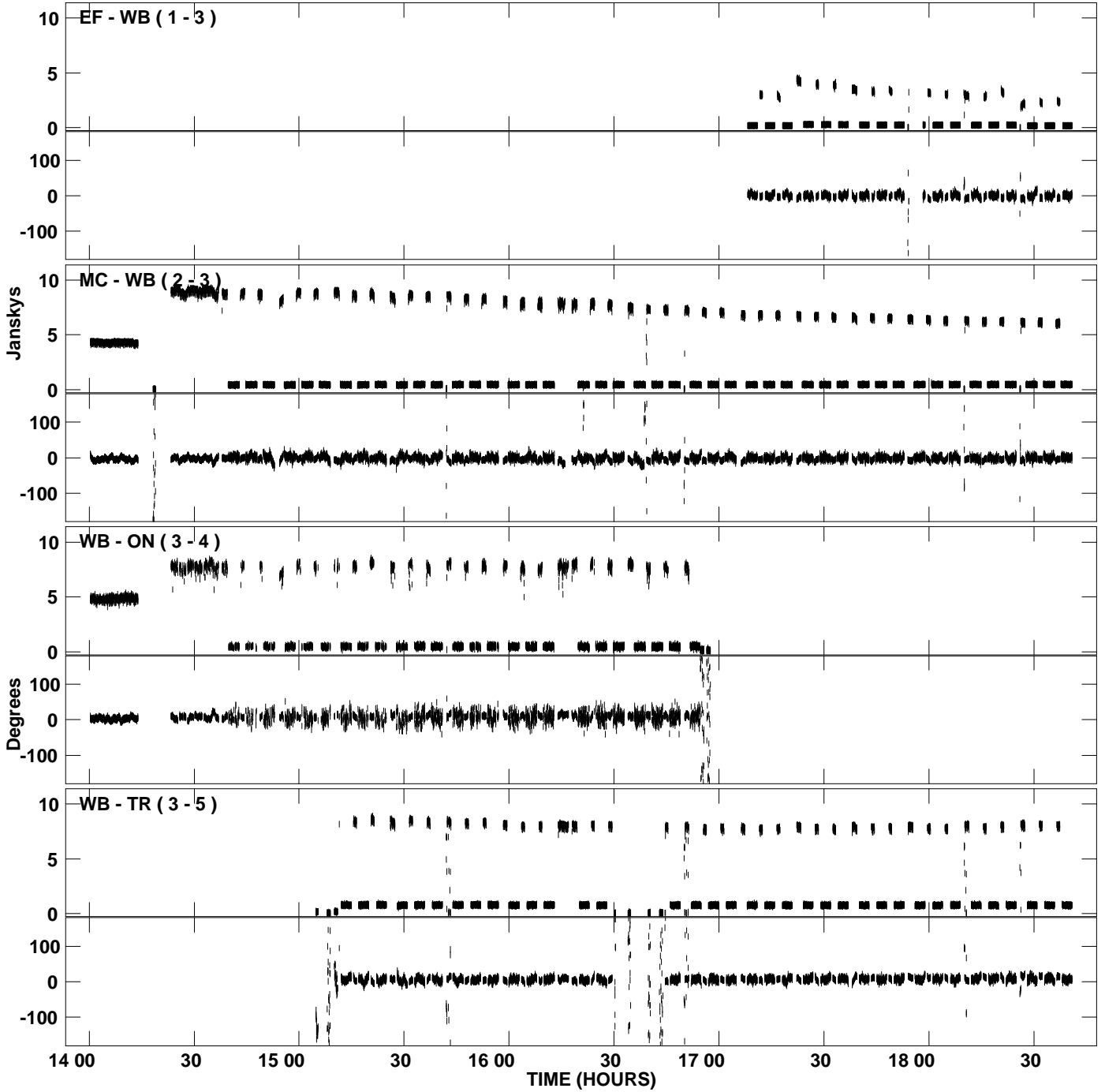
PLot file version 9 created 06-FEB-2007 16:42:21  
Amplitude and Phase vs Time for N06C3 2.UVDATA.1 Vect aver. CL # 3  
IF 1 CHAN 1 - 16 STK RR



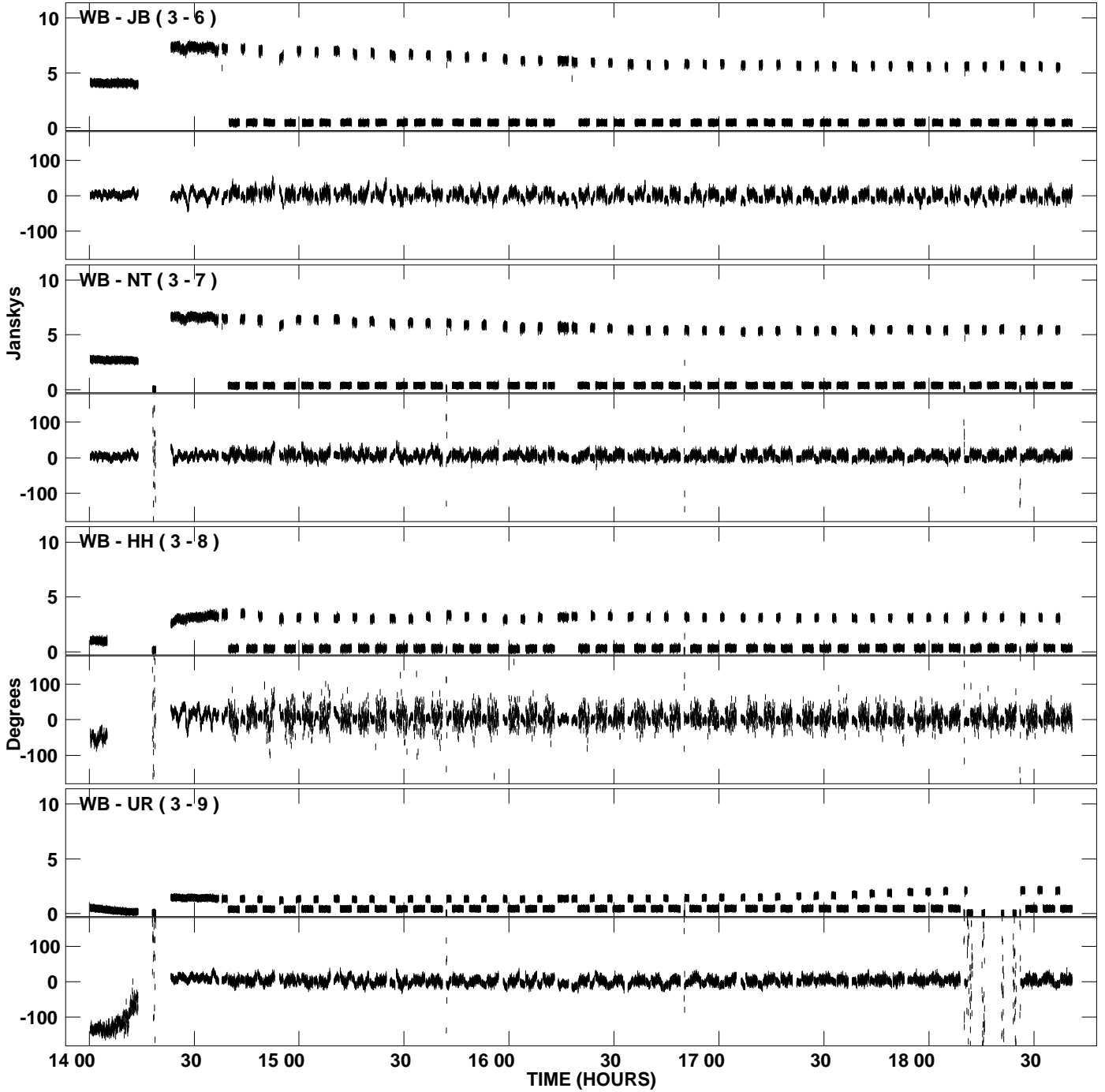
PLot file version 10 created 06-FEB-2007 16:42:22  
Amplitude and Phase vs Time for N06C3 2.UVDATA.1 Vect aver. CL # 3  
IF 1 CHAN 1 - 16 STK RR



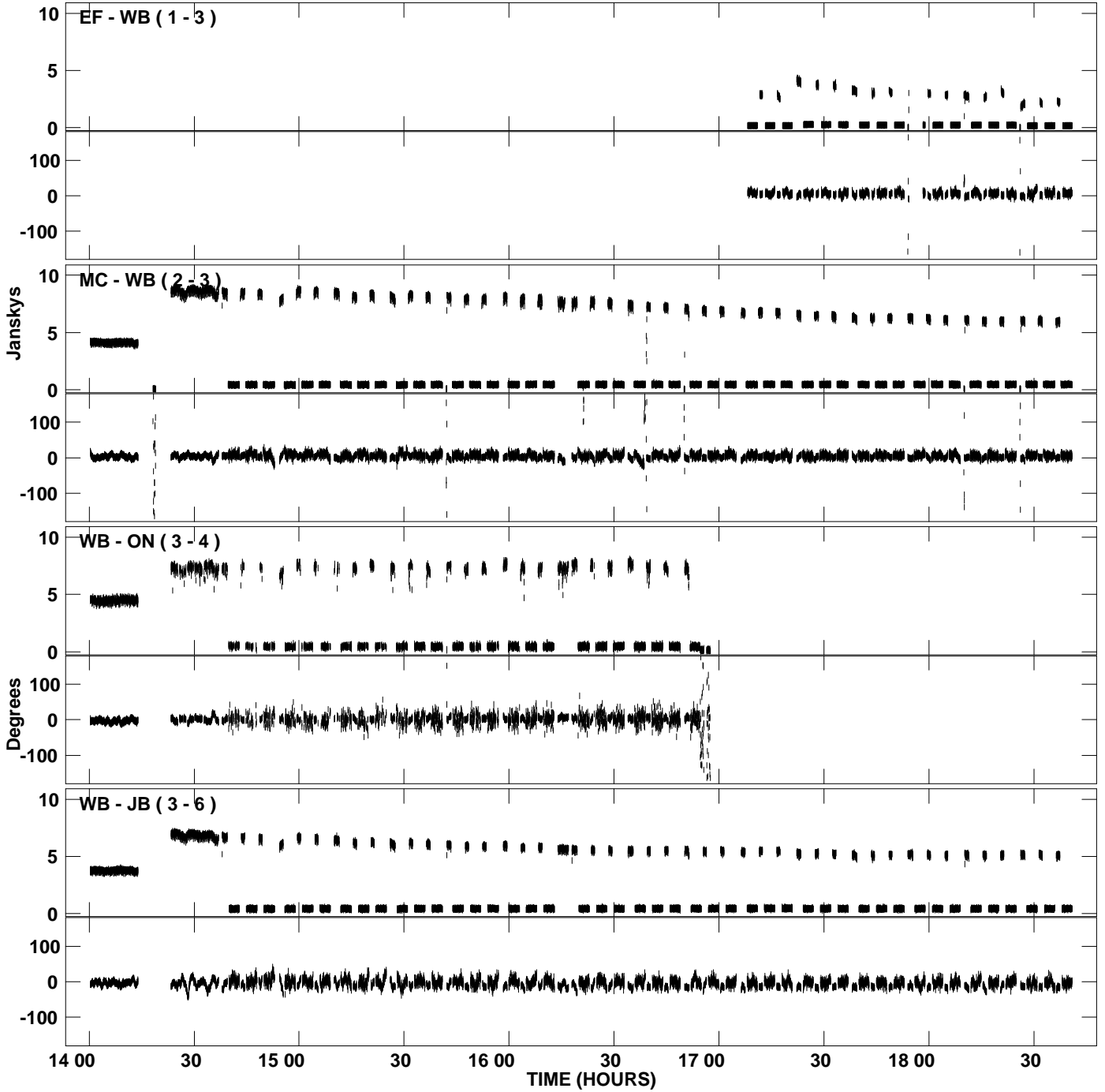
PLot file version 11 created 06-FEB-2007 16:42:30  
Amplitude and Phase vs Time for N06C3 2.UVDATA.1 Vect aver. CL # 3  
IF 2 CHAN 1 - 16 STK RR



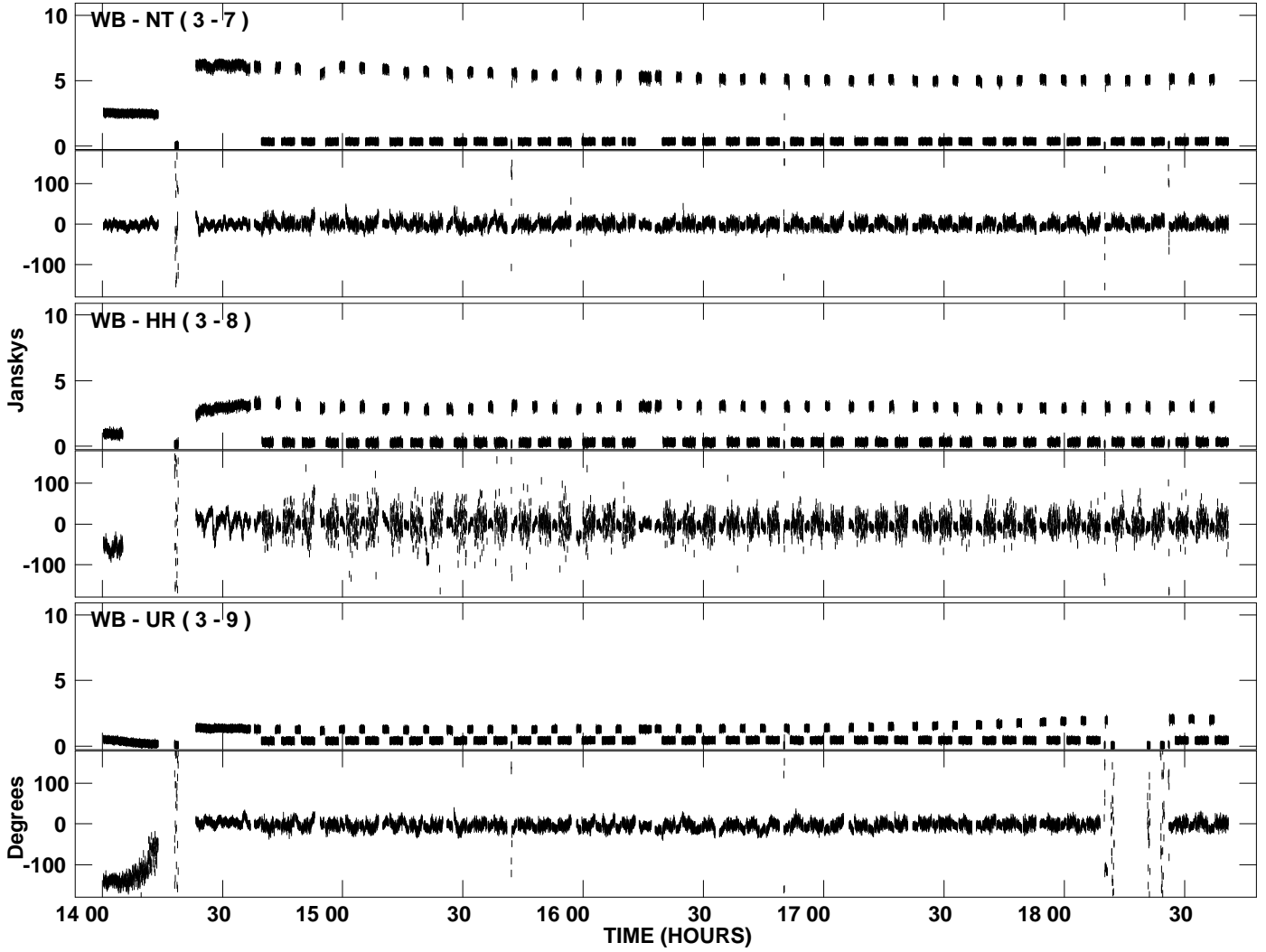
PLot file version 12 created 06-FEB-2007 16:42:31  
Amplitude and Phase vs Time for N06C3 2.UVDATA.1 Vect aver. CL # 3  
IF 2 CHAN 1 - 16 STK RR



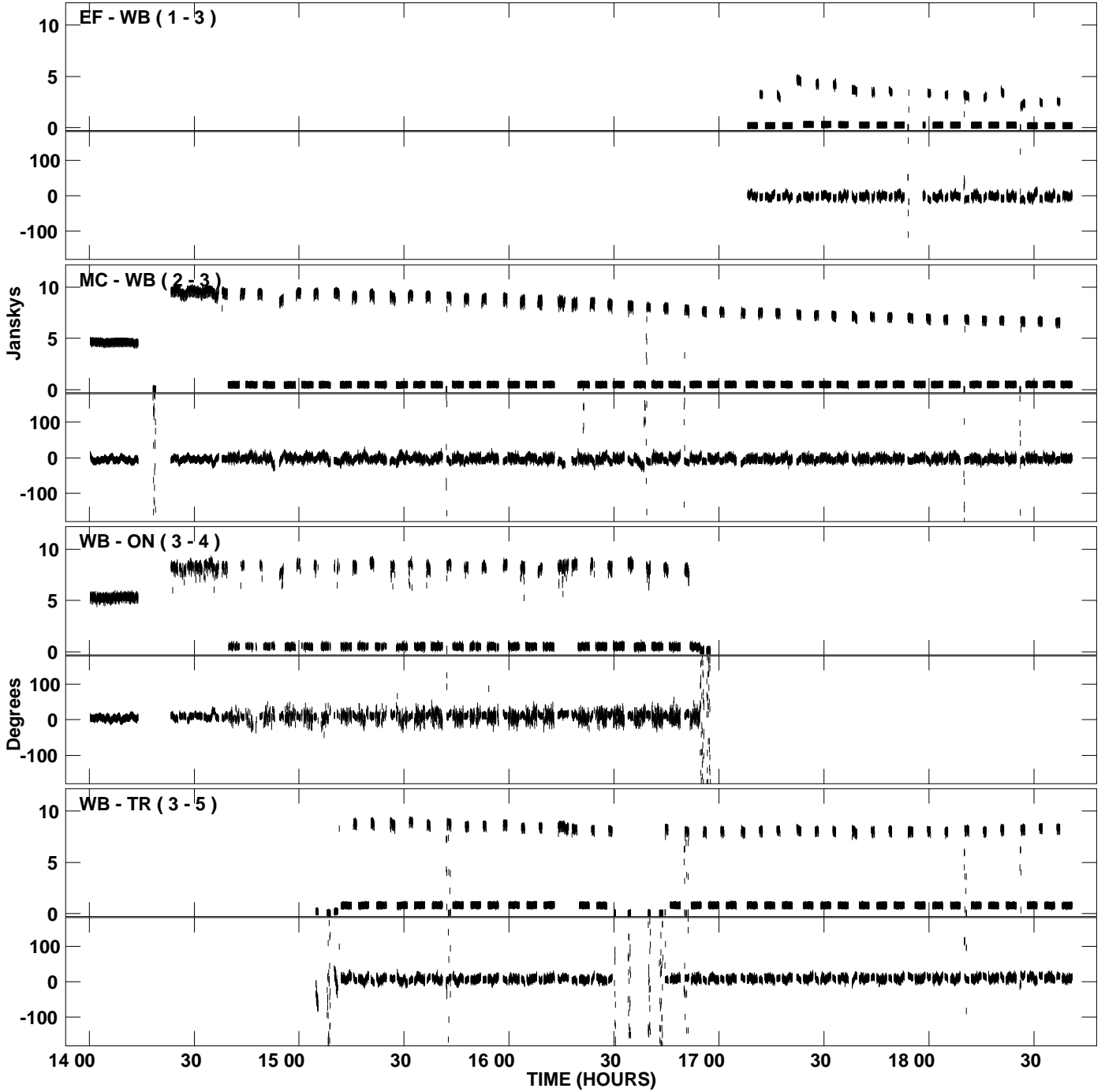
PLot file version 13 created 06-FEB-2007 16:42:39  
Amplitude and Phase vs Time for N06C3 2.UVDATA.1 Vect aver. CL # 3  
IF 3 CHAN 1 - 16 STK RR



PLot file version 14 created 06-FEB-2007 16:42:39  
Amplitude and Phase vs Time for N06C3 2.UVDATA.1 Vect aver. CL # 3  
IF 3 CHAN 1 - 16 STK RR



PLot file version 15 created 06-FEB-2007 16:42:48  
Amplitude and Phase vs Time for N06C3 2.UVDATA.1 Vect aver. CL # 3  
IF 4 CHAN 1 - 16 STK RR



PLot file version 16 created 06-FEB-2007 16:42:48  
Amplitude and Phase vs Time for N06C3 2.UVDATA.1 Vect aver. CL # 3  
IF 4 CHAN 1 - 16 STK RR

