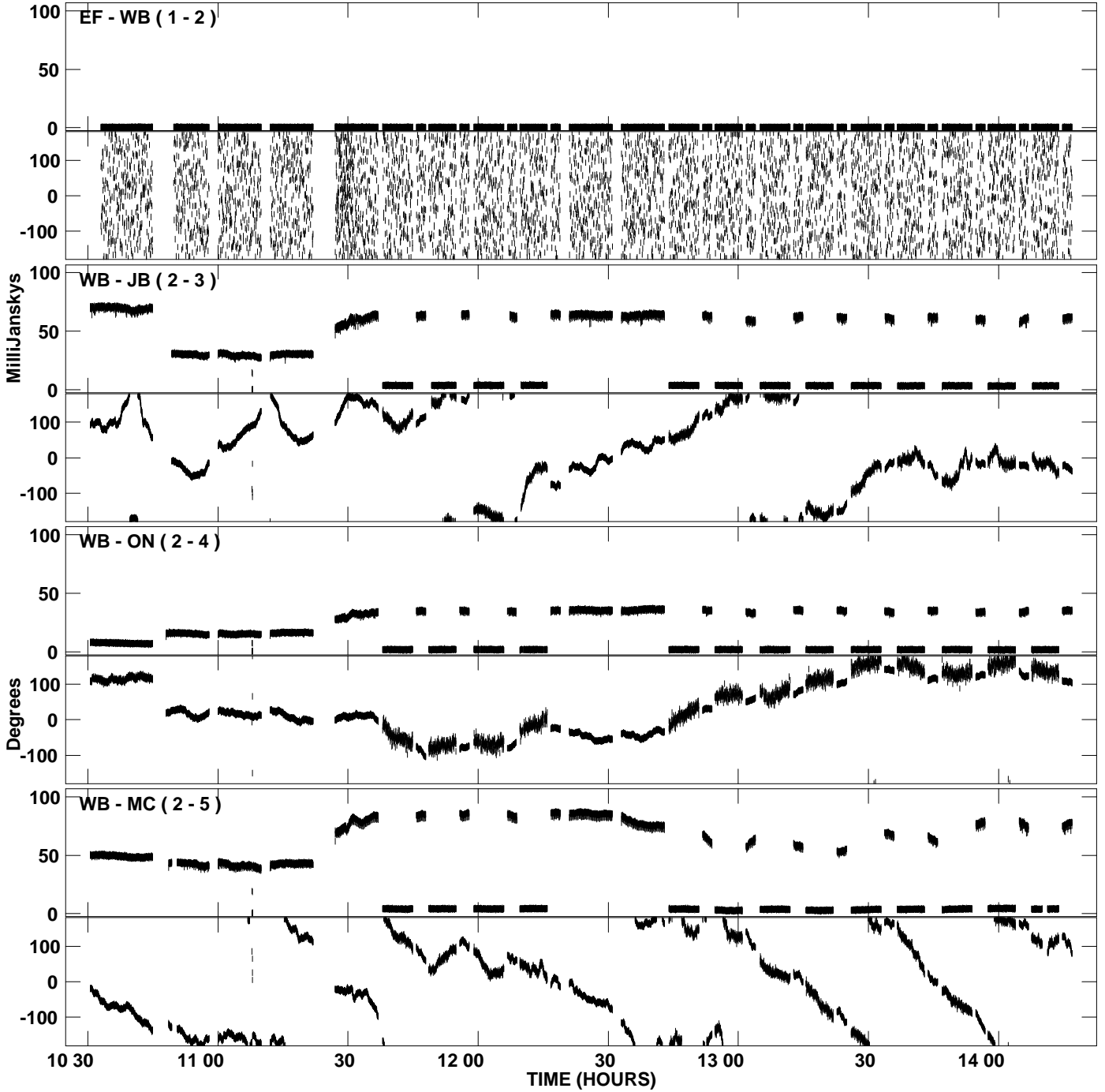
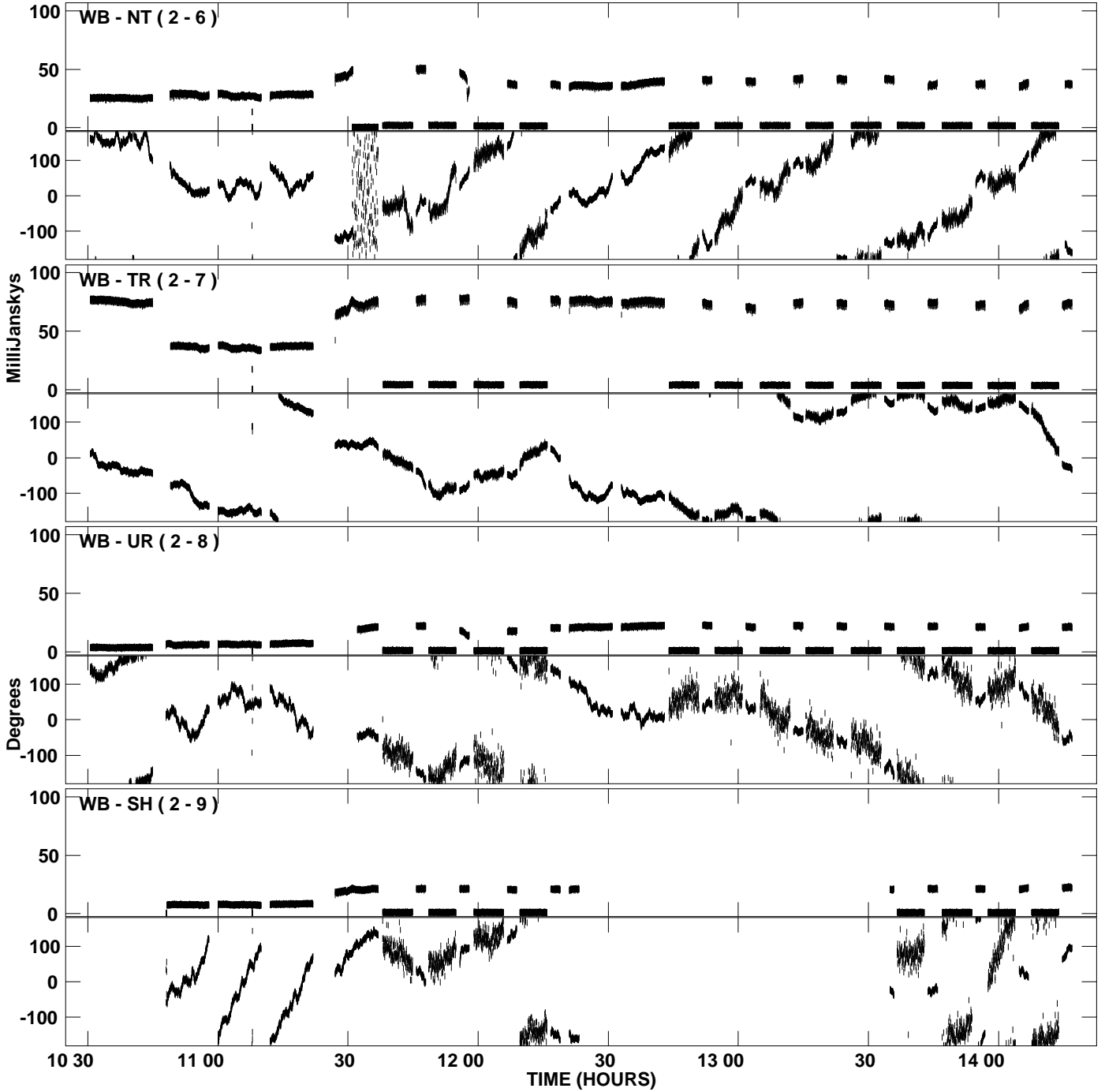


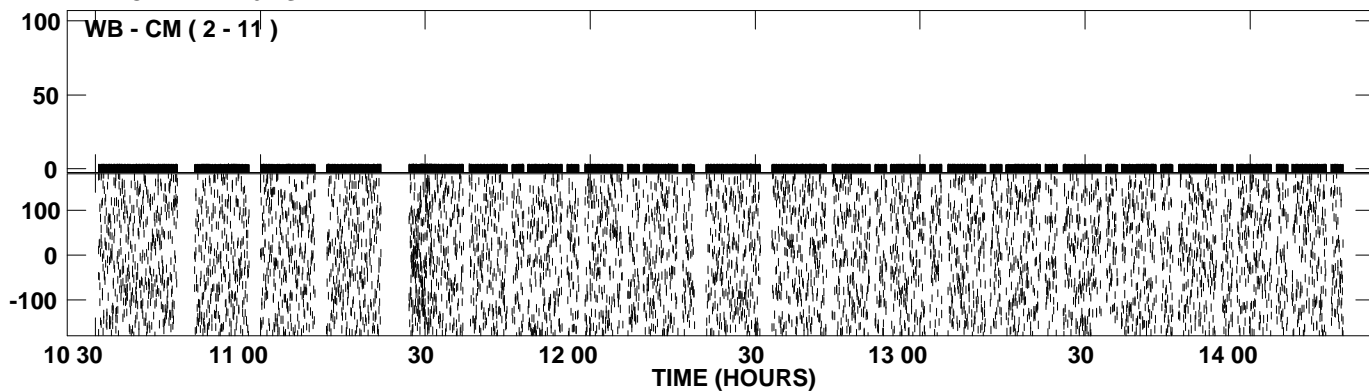
PLot file version 1 created 03-OCT-2007 16:05:25  
Amplitude andPhase vs Time for N07C2.UVDATA.1 Vect aver.  
IF 1 CHAN 1 - 16 STK LL



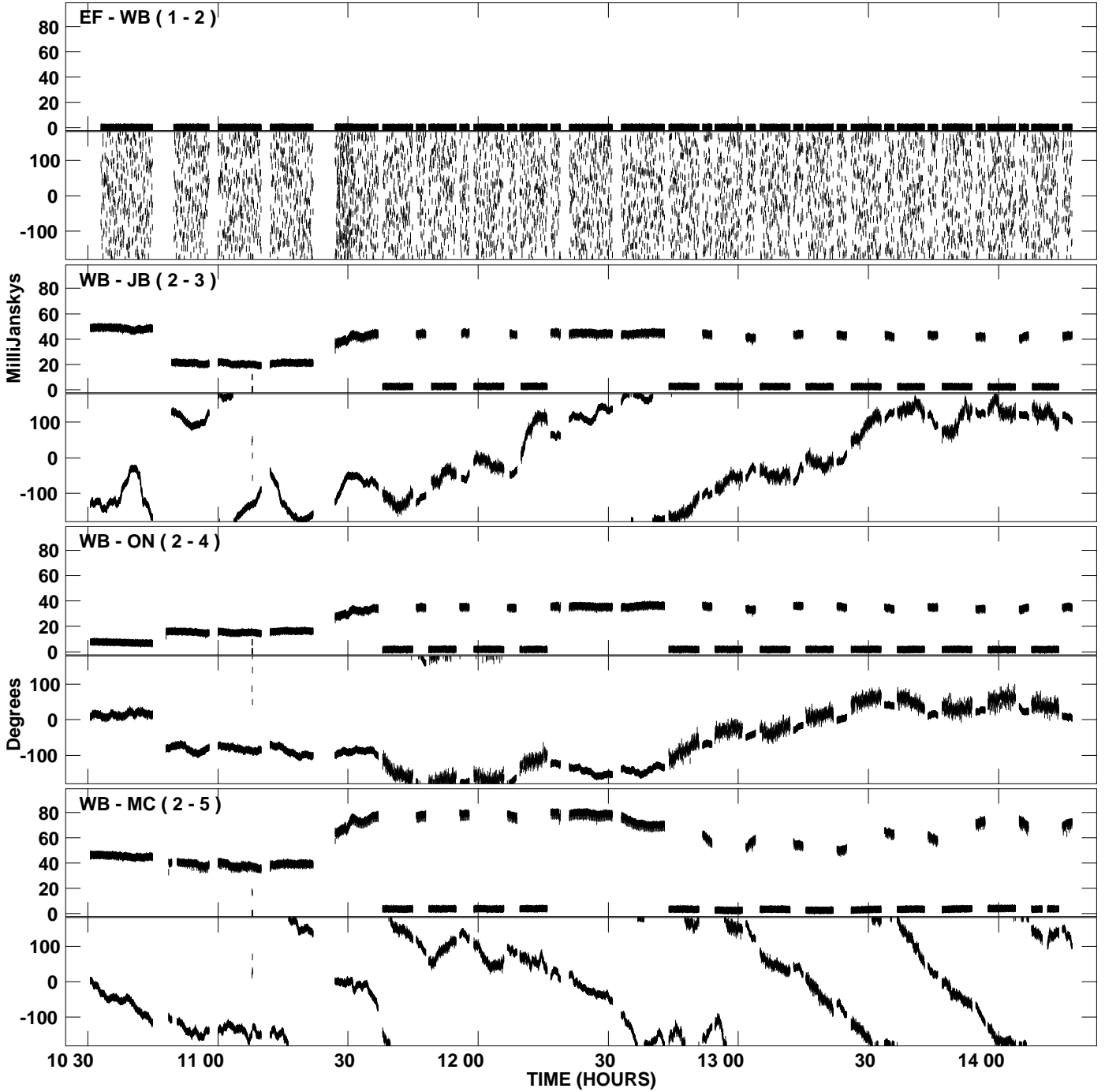
PLot file version 2 created 03-OCT-2007 16:05:25  
Amplitude and Phase vs Time for N07C2.UVDATA.1 Vect aver.  
IF 1 CHAN 1 - 16 STK LL



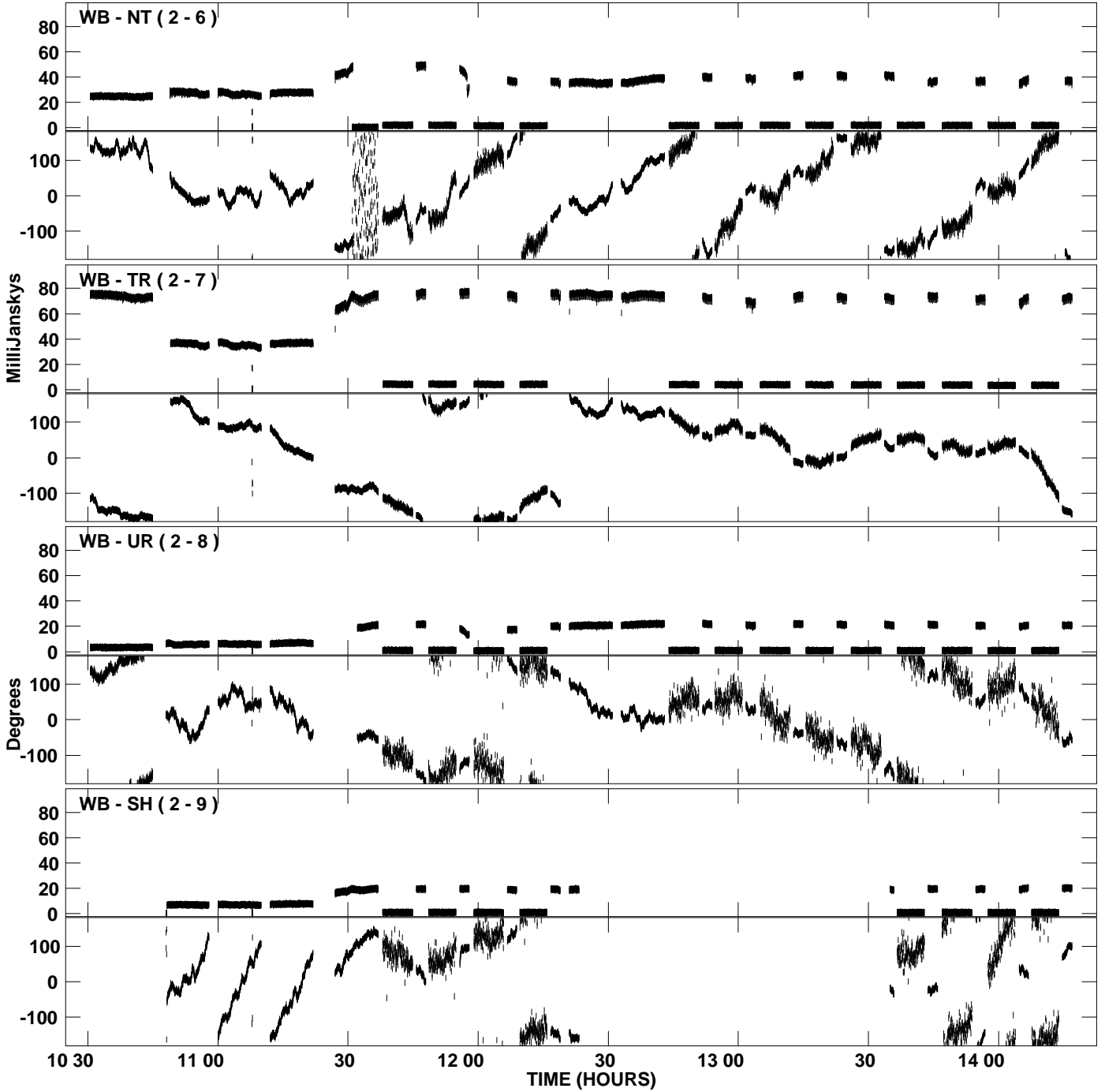
PLot file version 3 created 03-OCT-2007 16:05:25  
Amplitude andPhase vs Time for N07C2.UVDATA.1 Vect aver.  
IF 1 CHAN 1 - 16 STK LL



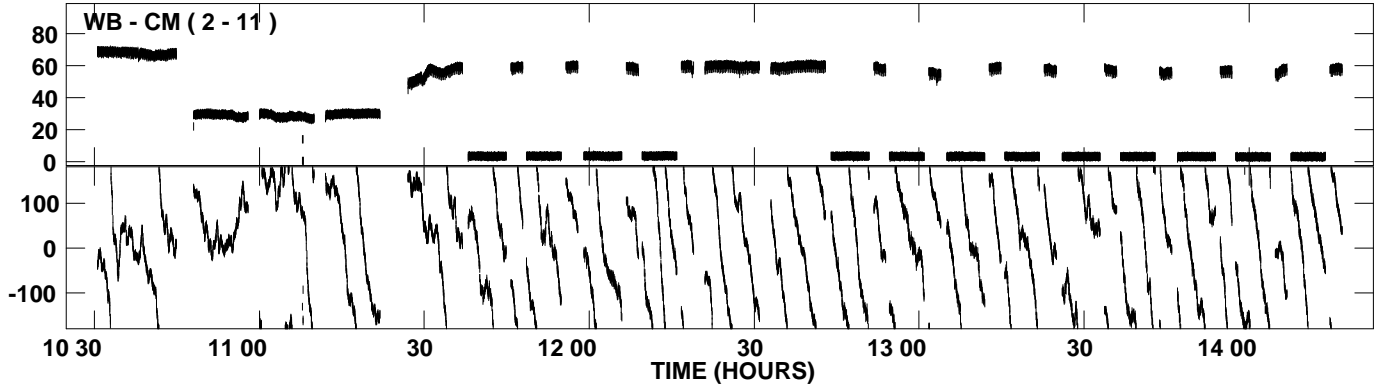
PLot file version 4 created 03-OCT-2007 16:05:32  
Amplitude and Phase vs Time for N07C2.UVDATA.1 Vect aver.  
IF 2 CHAN 1 - 16 STK LL



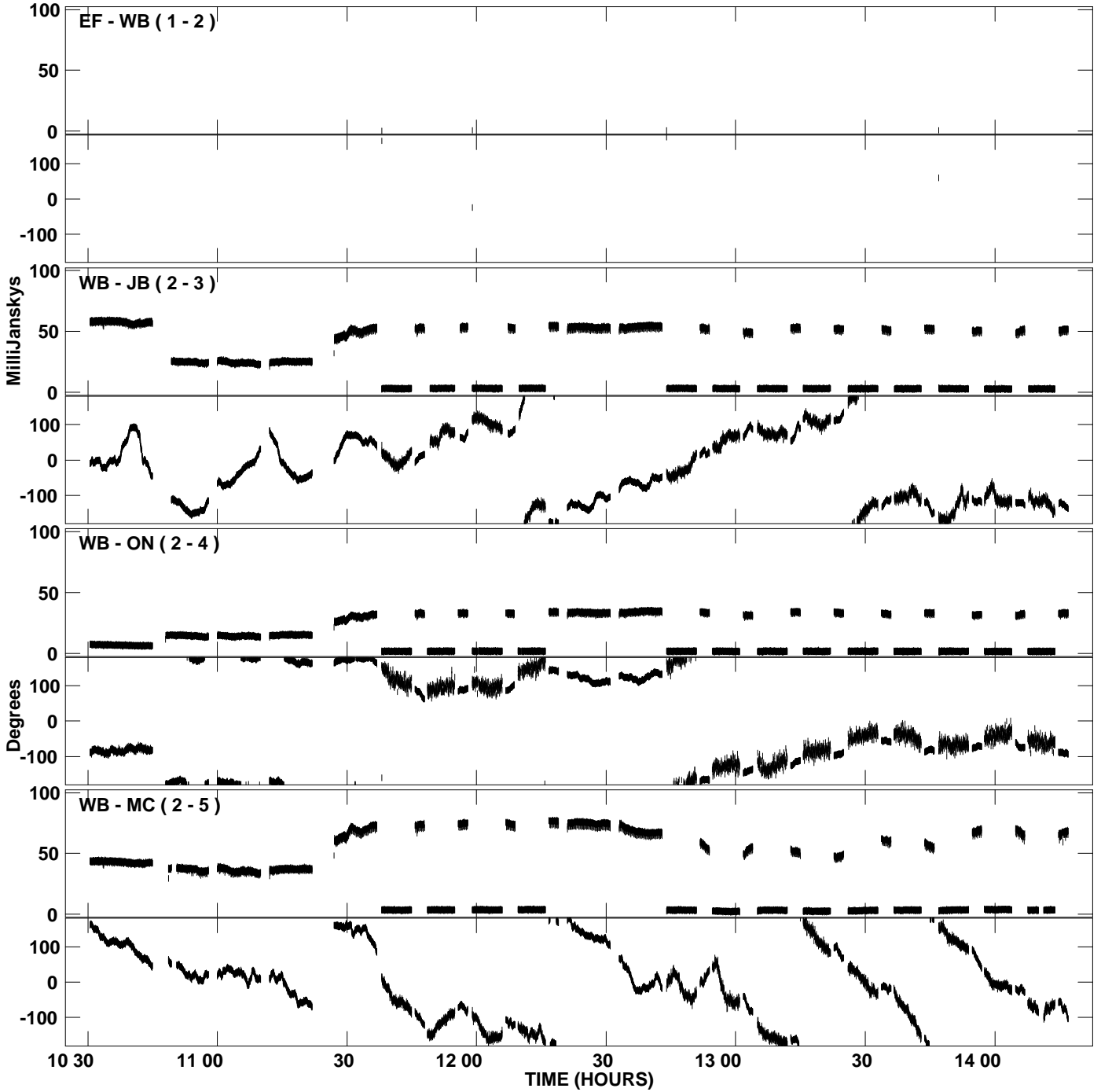
PLot file version 5 created 03-OCT-2007 16:05:32  
Amplitude andPhase vs Time for N07C2.UVDATA.1 Vect aver.  
IF 2 CHAN 1 - 16 STK LL



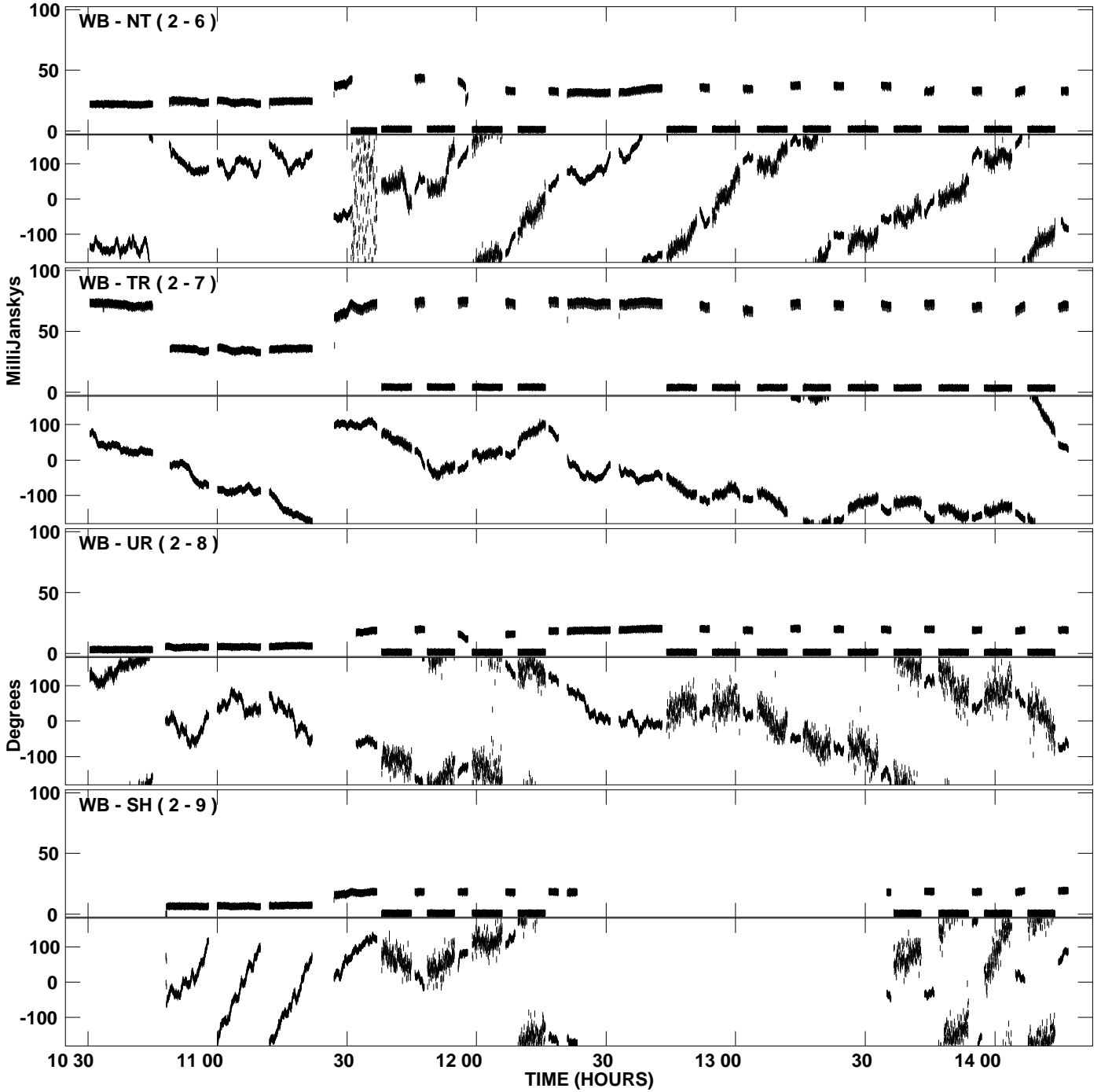
PLot file version 6 created 03-OCT-2007 16:05:32  
Amplitude and Phase vs Time for N07C2.UVDATA.1 Vect aver.  
IF 2 CHAN 1 - 16 STK LL



PLot file version 7 created 03-OCT-2007 16:05:37  
Amplitude andPhase vs Time for N07C2.UVDATA.1 Vect aver.  
IF 3 CHAN 1 - 16 STK LL

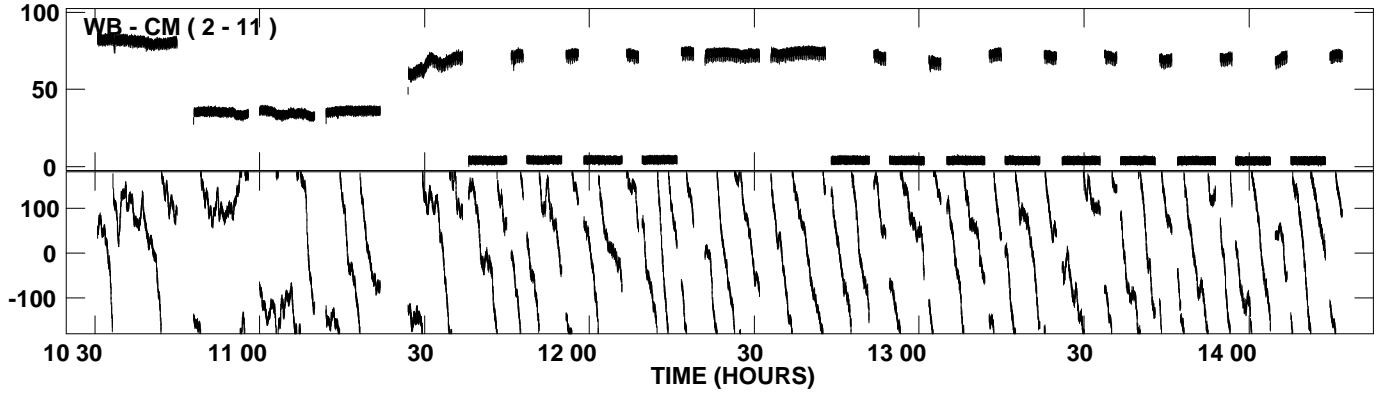


PLot file version 8 created 03-OCT-2007 16:05:37  
Amplitude and Phase vs Time for N07C2.UVDATA.1 Vect aver.  
IF 3 CHAN 1 - 16 STK LL

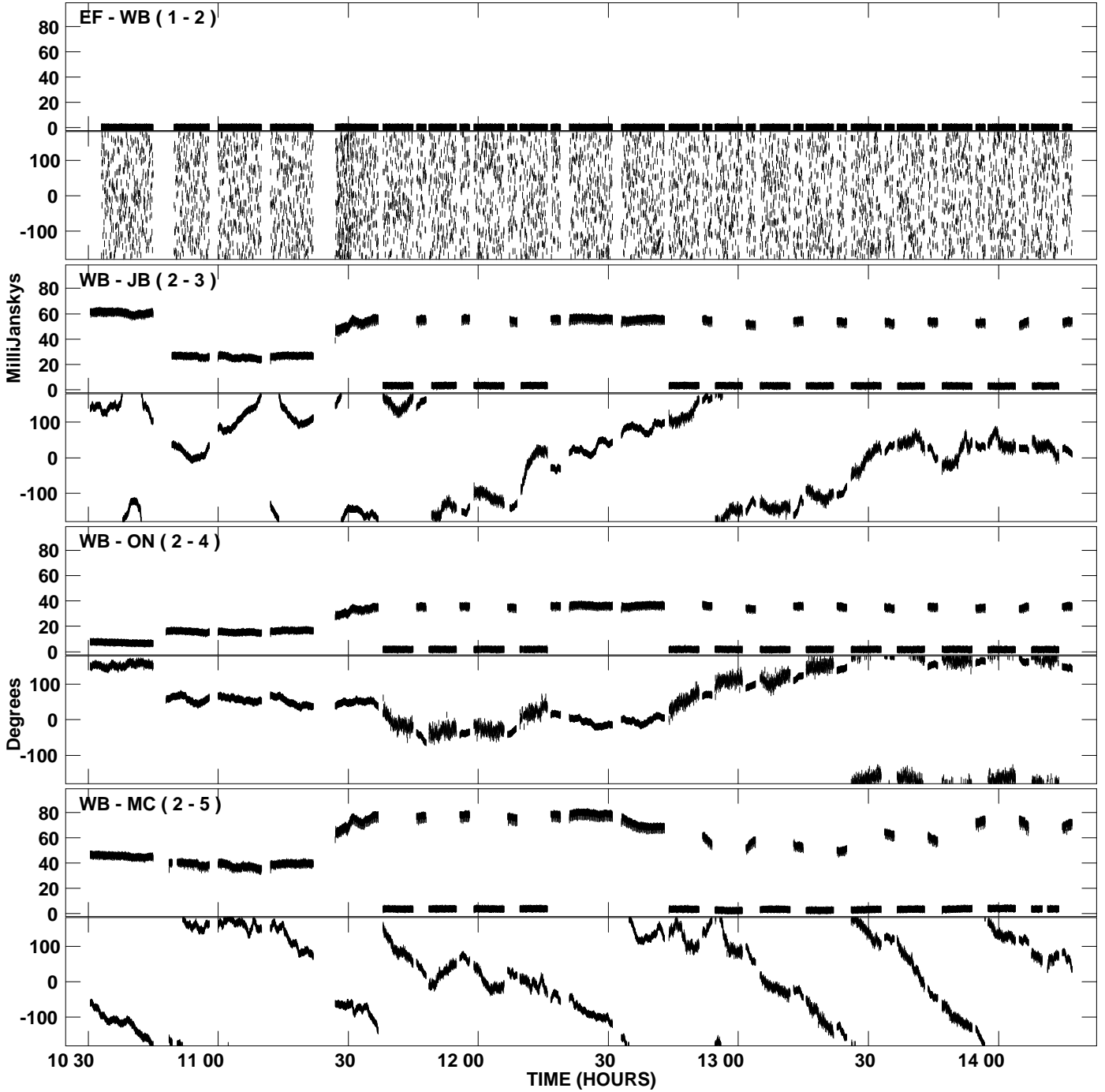




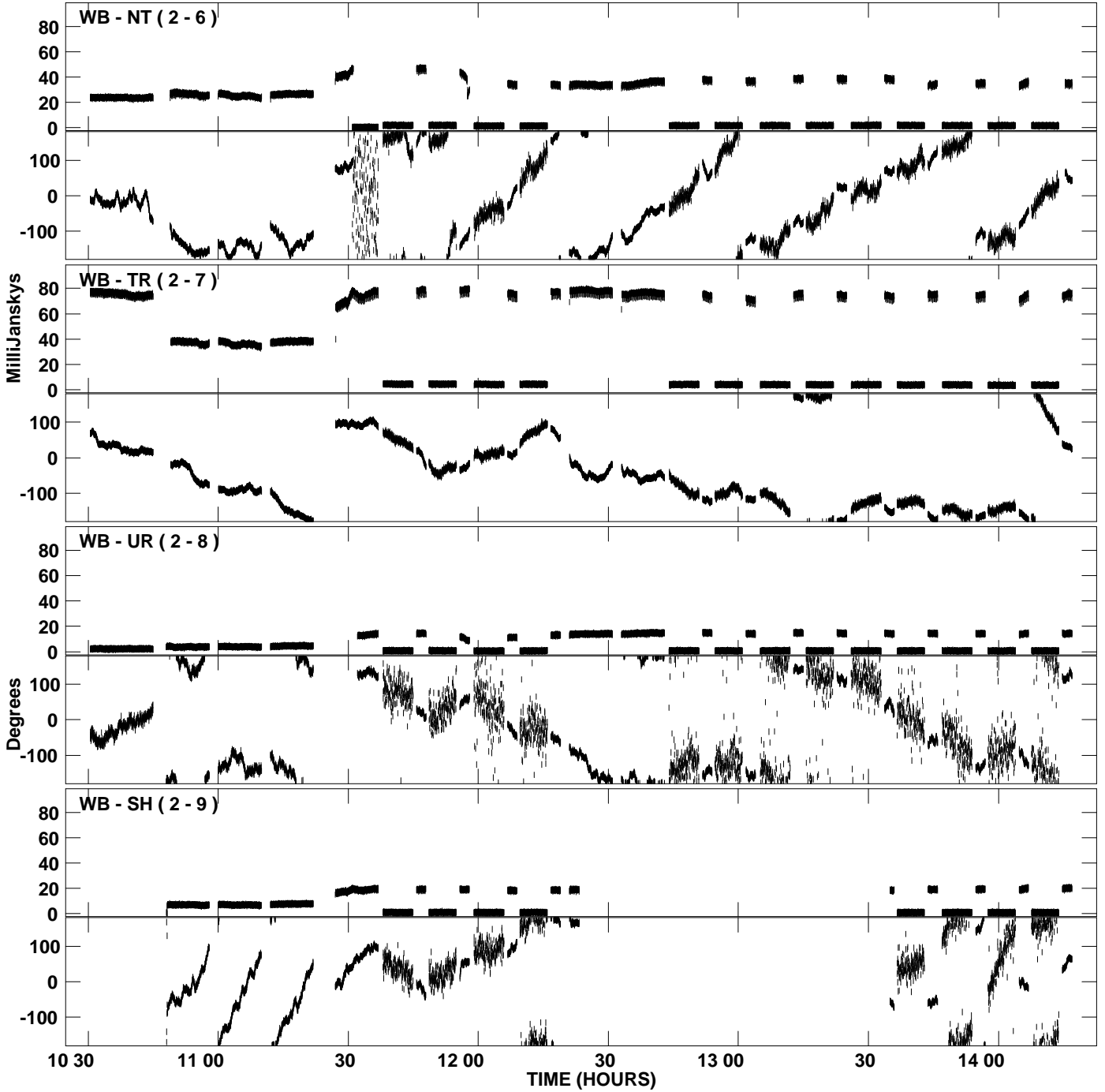
PLot file version 9 created 03-OCT-2007 16:05:37  
Amplitude and Phase vs Time for N07C2.UVDATA.1 Vect aver.  
IF 3 CHAN 1 - 16 STK LL



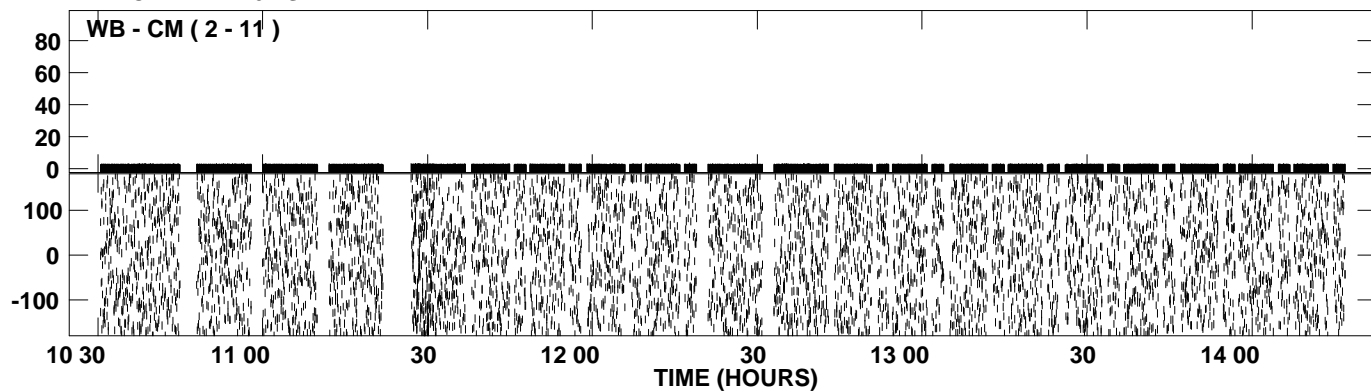
PLot file version 10 created 03-OCT-2007 16:05:44  
Amplitude andPhase vs Time for N07C2.UVDATA.1 Vect aver.  
IF 4 CHAN 1 - 16 STK LL



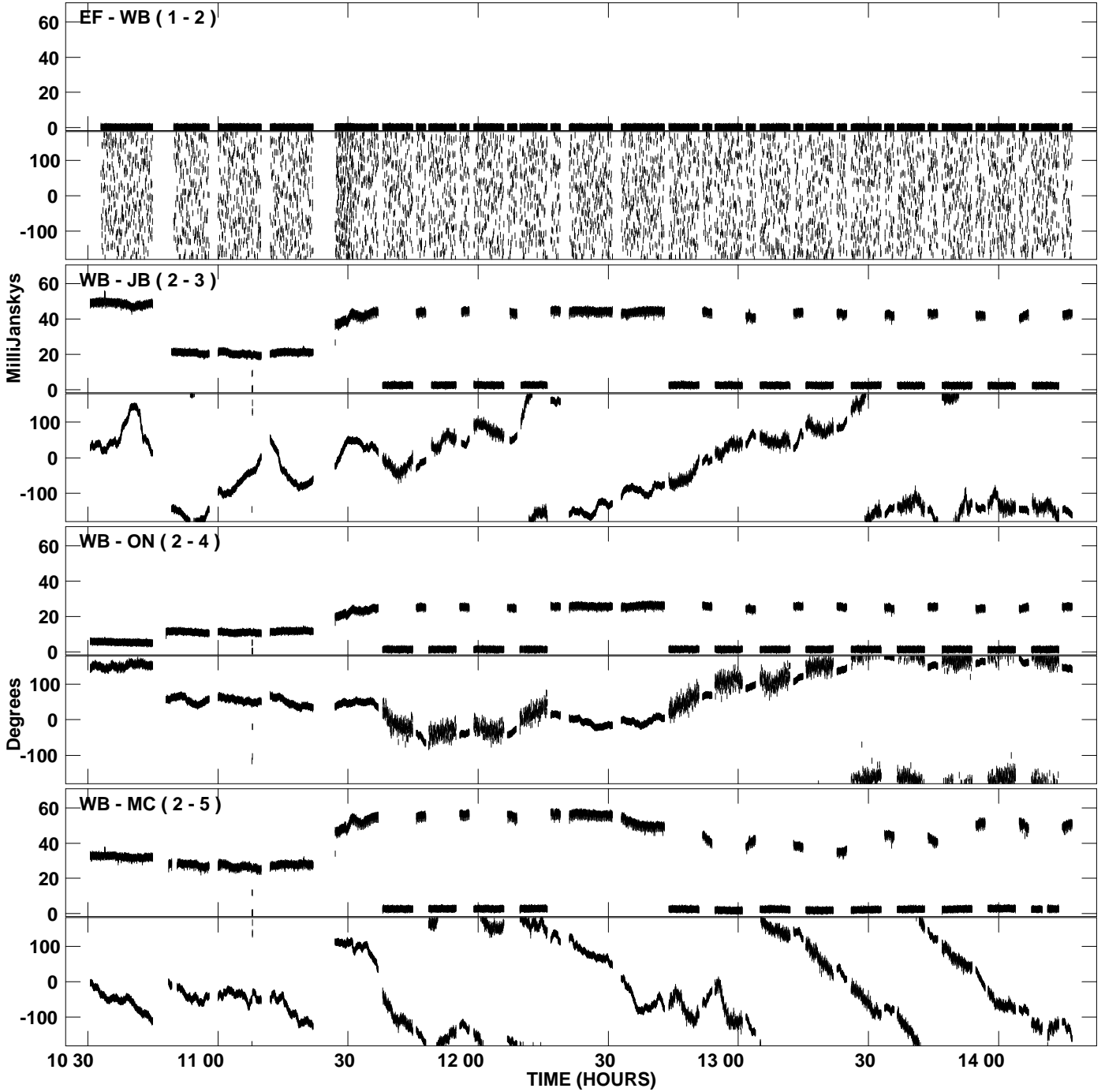
PLot file version 11 created 03-OCT-2007 16:05:44  
Amplitude andPhase vs Time for N07C2.UVDATA.1 Vect aver.  
IF 4 CHAN 1 - 16 STK LL



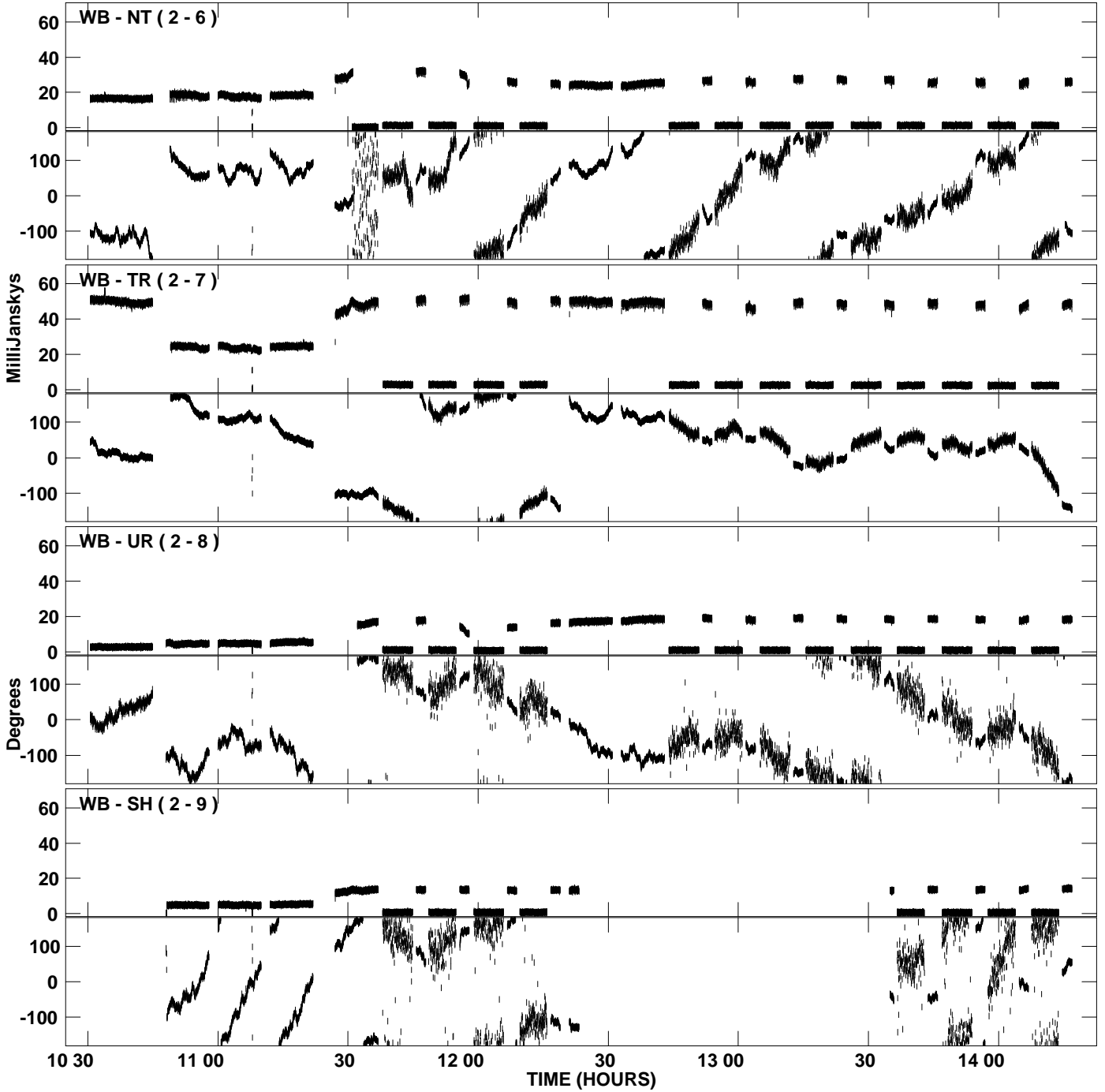
PLot file version 12 created 03-OCT-2007 16:05:44  
Amplitude andPhase vs Time for N07C2.UVDATA.1 Vect aver.  
IF 4 CHAN 1 - 16 STK LL



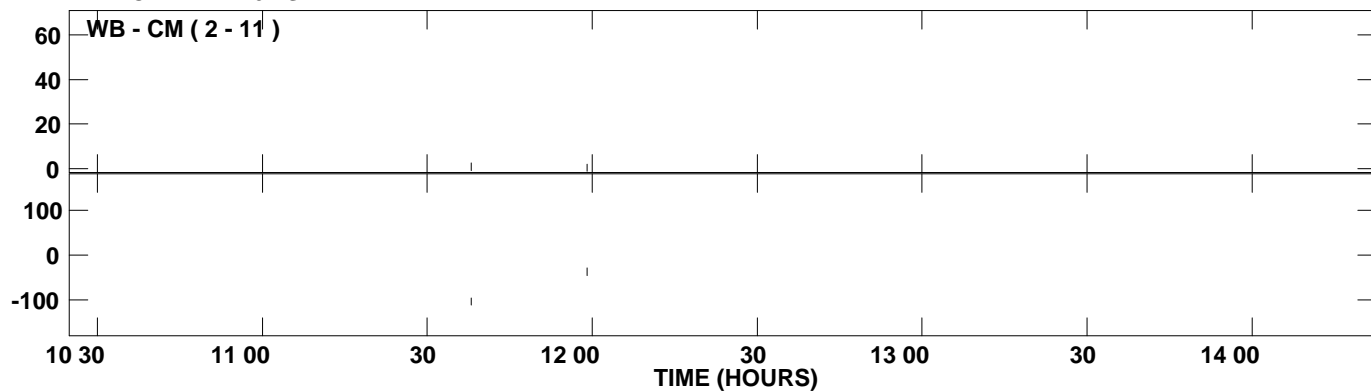
PLot file version 13 created 03-OCT-2007 16:05:51  
Amplitude andPhase vs Time for N07C2.UVDATA.1 Vect aver.  
IF 1 CHAN 1 - 16 STK RR



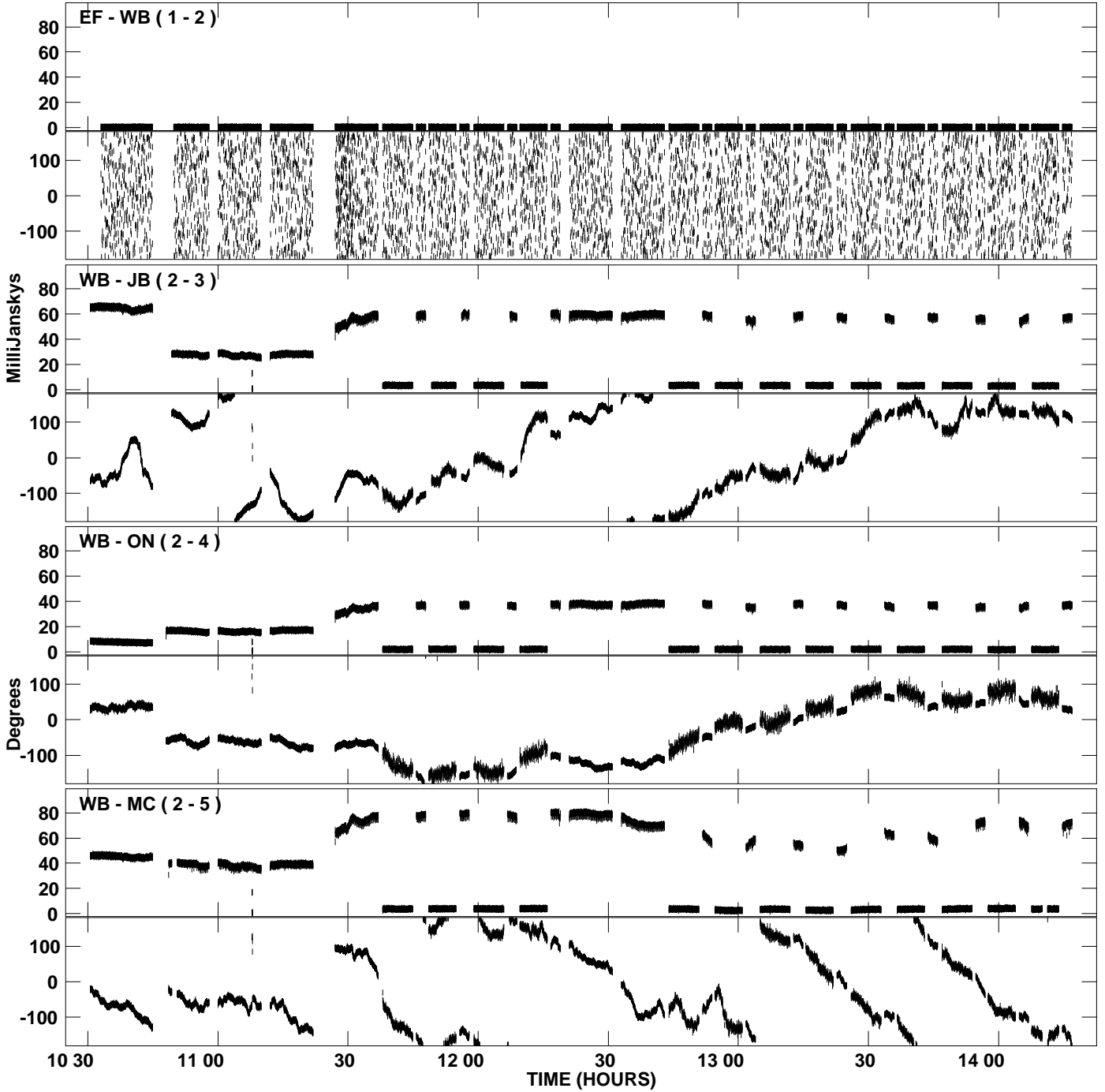
PLot file version 14 created 03-OCT-2007 16:05:52  
Amplitude andPhase vs Time for N07C2.UVDATA.1 Vect aver.  
IF 1 CHAN 1 - 16 STK RR



PLot file version 15 created 03-OCT-2007 16:05:52  
Amplitude and Phase vs Time for N07C2.UVDATA.1 Vect aver.  
IF 1 CHAN 1 - 16 STK RR

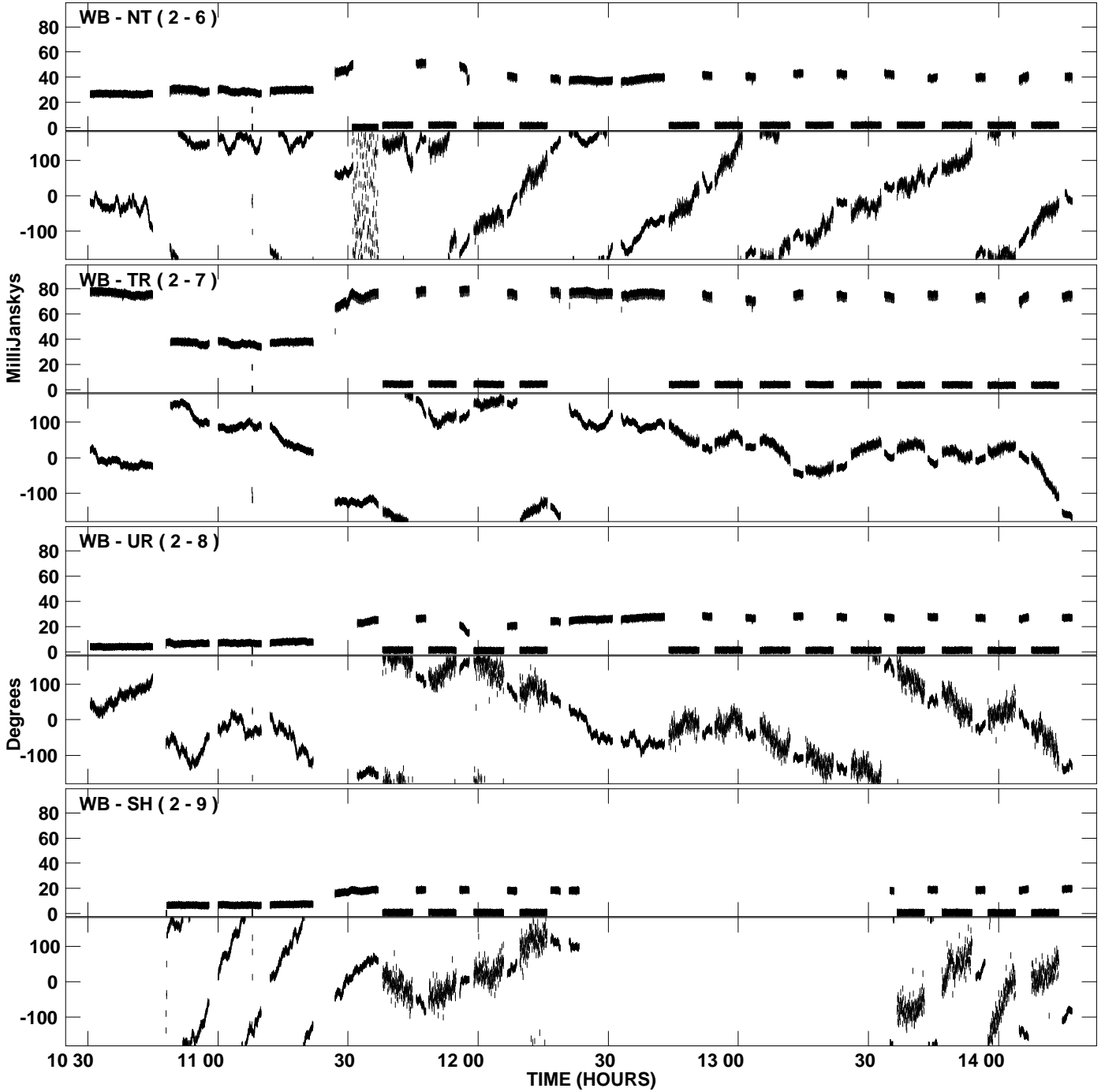


PLot file version 16 created 03-OCT-2007 16:05:58  
Amplitude andPhase vs Time for N07C2.UVDATA.1 Vect aver.  
IF 2 CHAN 1 - 16 STK RR

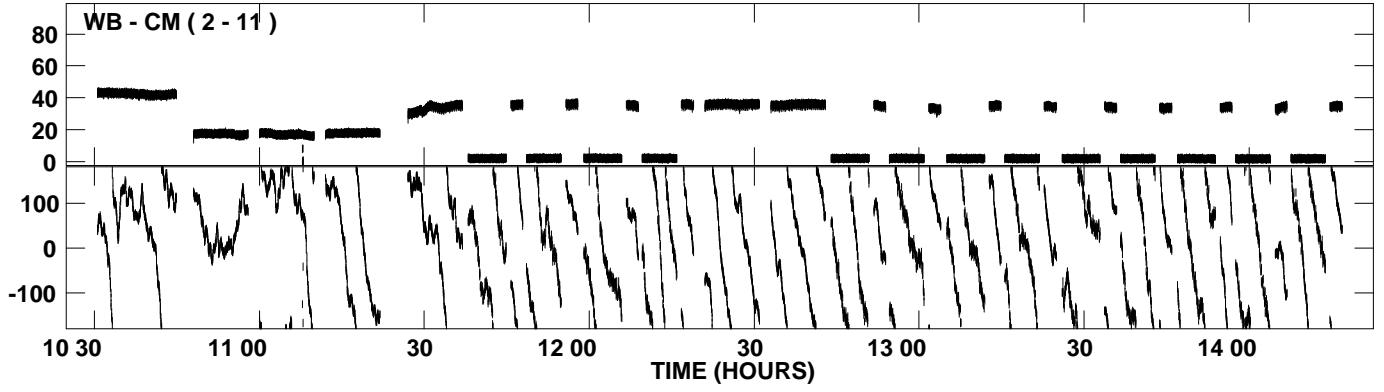




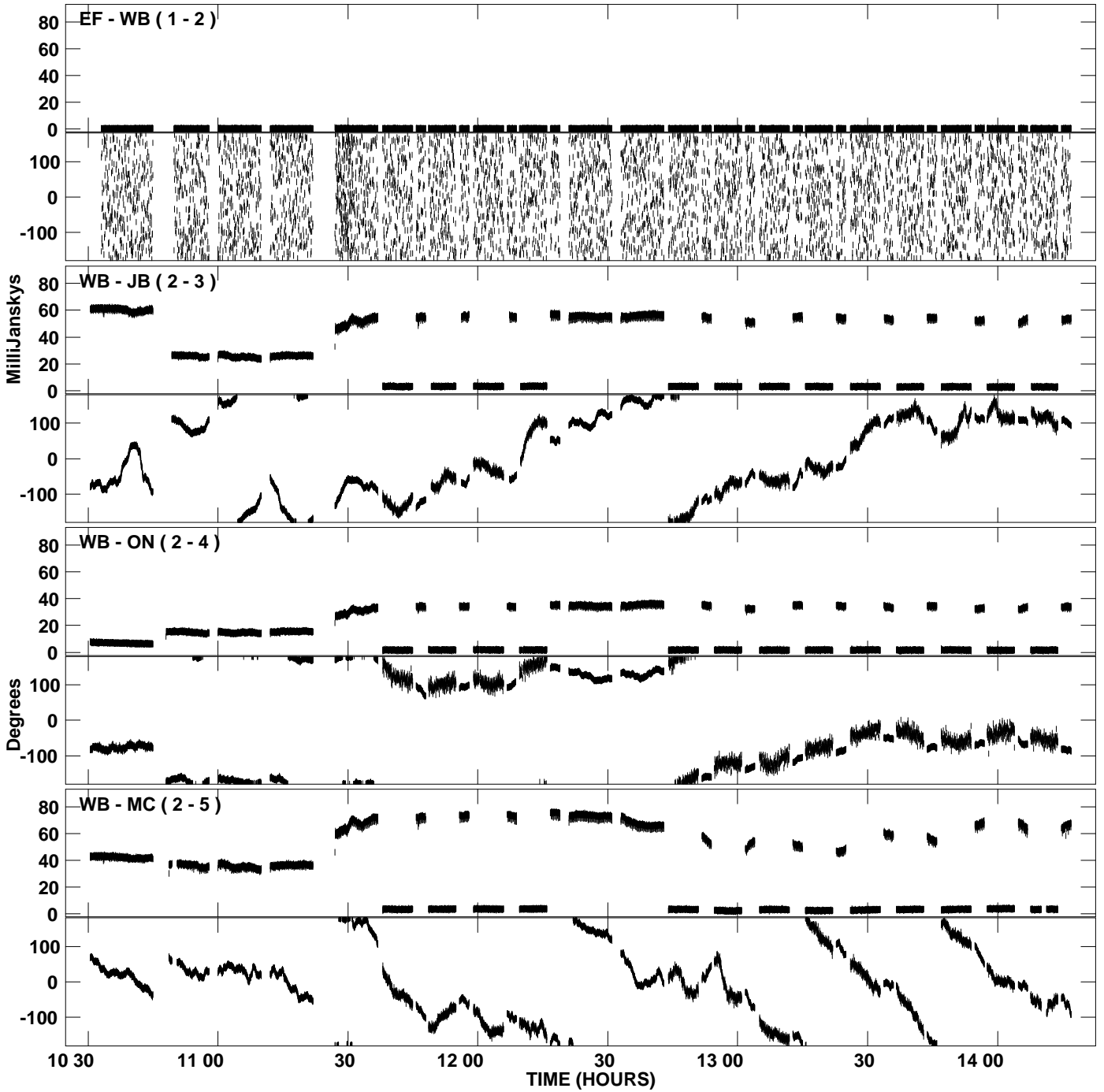
PLot file version 17 created 03-OCT-2007 16:05:58  
Amplitude andPhase vs Time for N07C2.UVDATA.1 Vect aver.  
IF 2 CHAN 1 - 16 STK RR



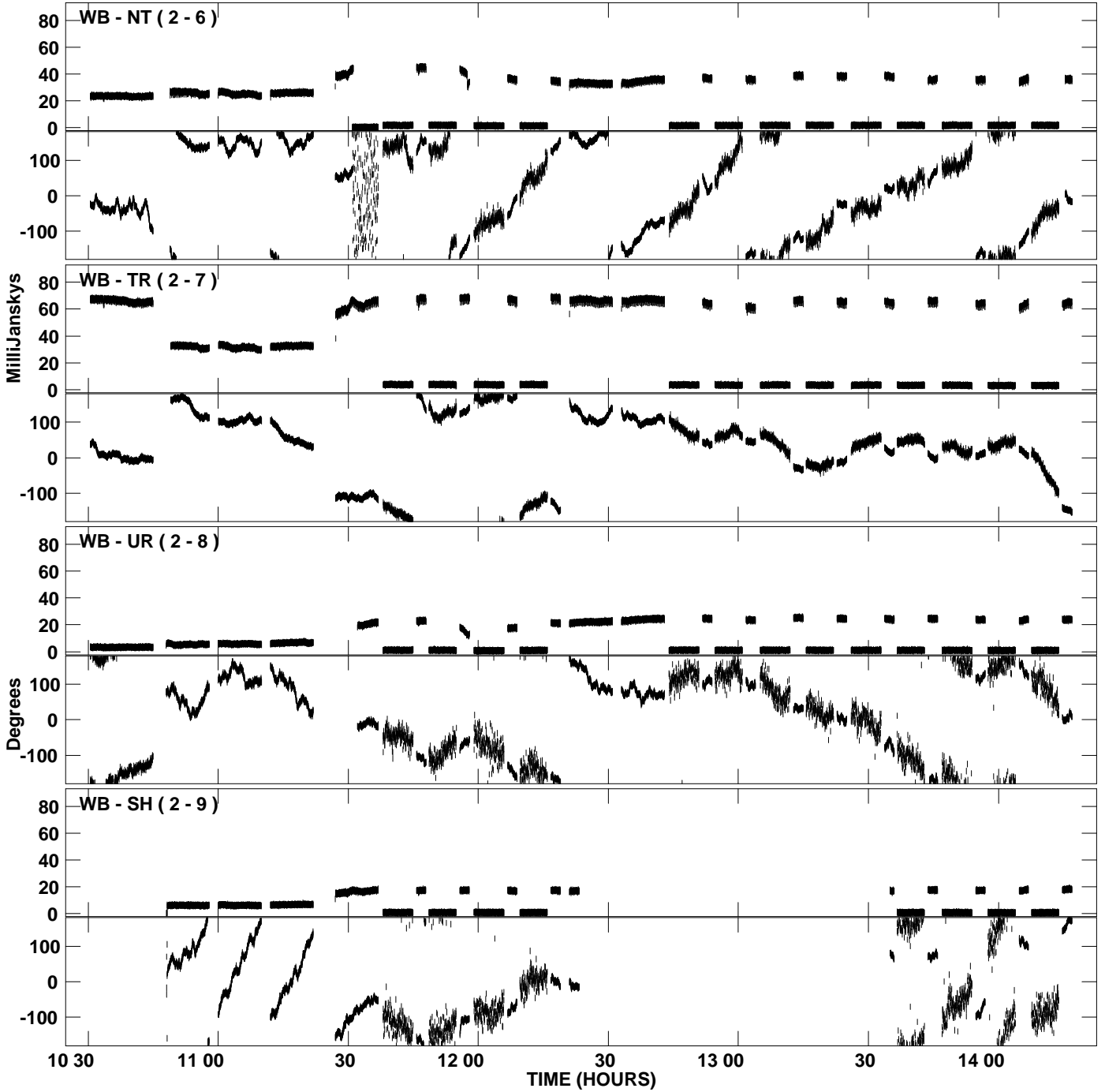
PLot file version 18 created 03-OCT-2007 16:05:58  
Amplitude and Phase vs Time for N07C2.UVDATA.1 Vect aver.  
IF 2 CHAN 1 - 16 STK RR



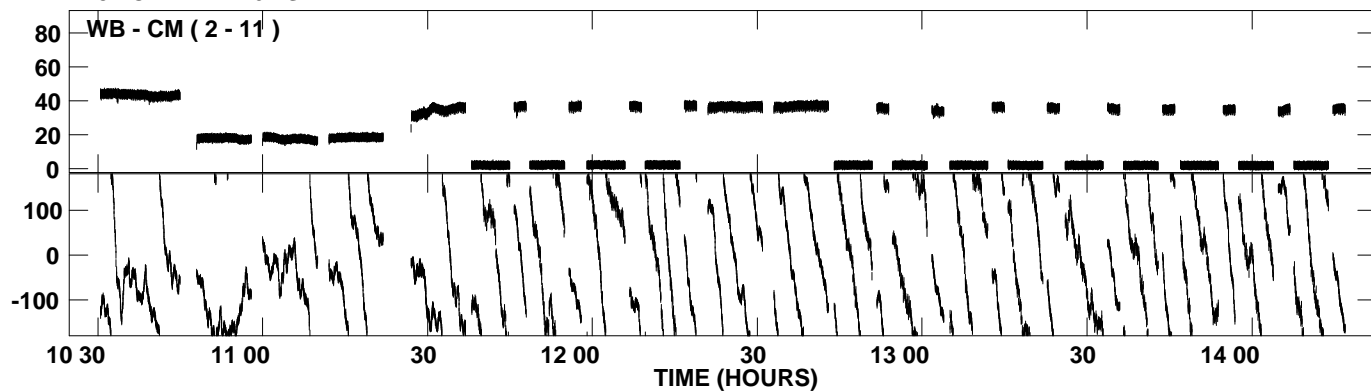
PLot file version 19 created 03-OCT-2007 16:06:06  
Amplitude andPhase vs Time for N07C2.UVDATA.1 Vect aver.  
IF 3 CHAN 1 - 16 STK RR



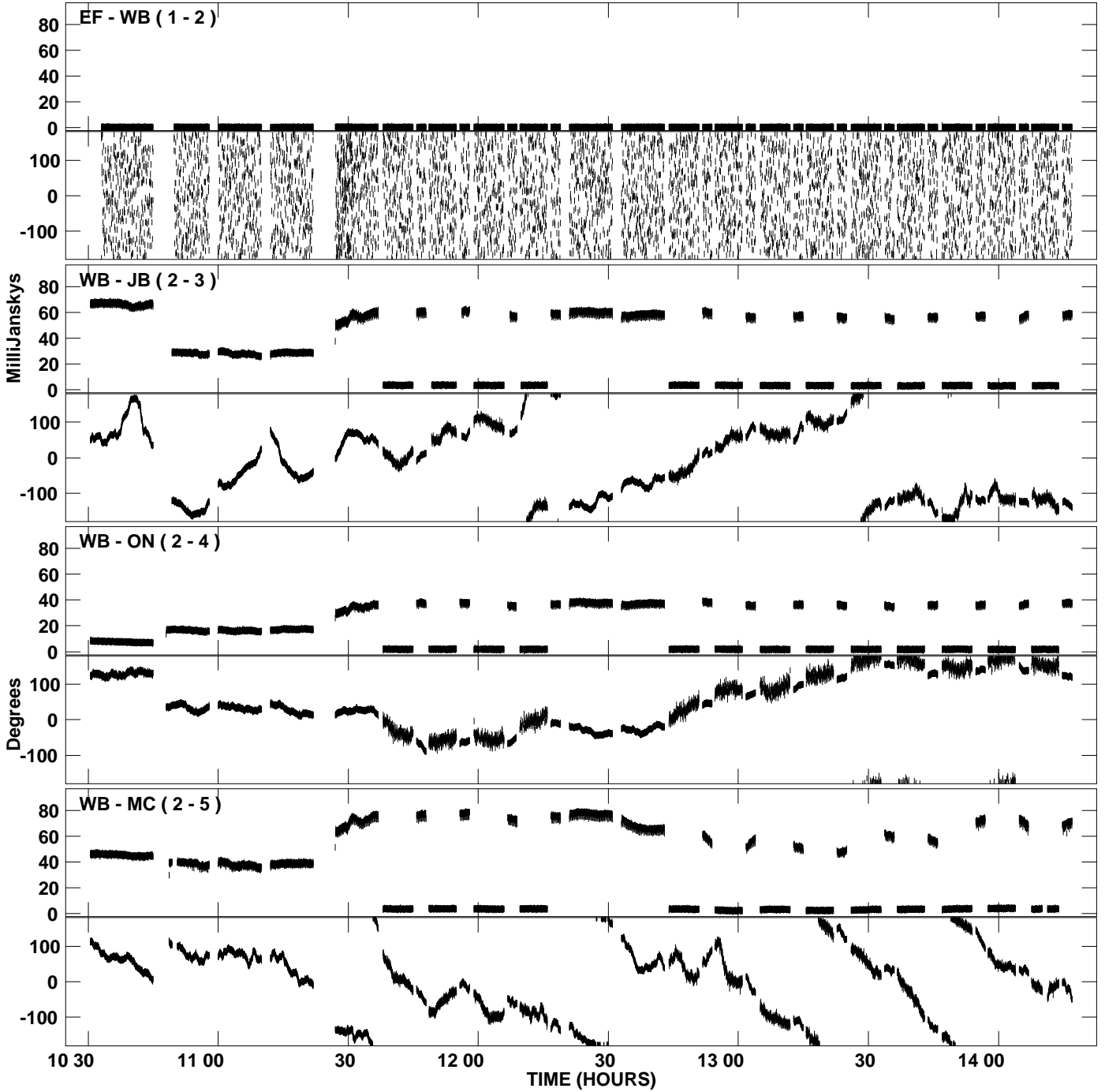
PLot file version 20 created 03-OCT-2007 16:06:06  
Amplitude andPhase vs Time for N07C2.UVDATA.1 Vect aver.  
IF 3 CHAN 1 - 16 STK RR



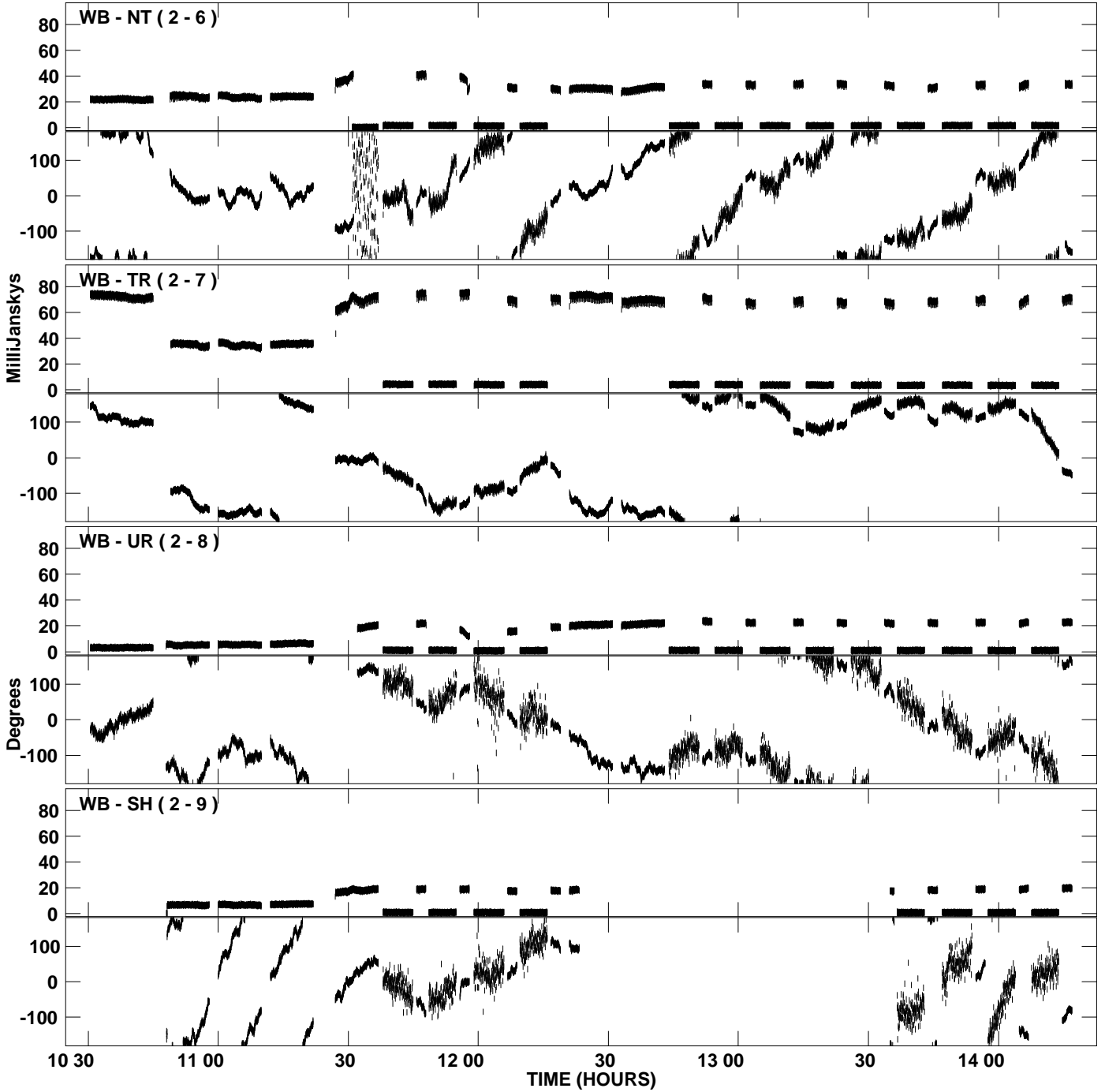
PLot file version 21 created 03-OCT-2007 16:06:06  
Amplitude andPhase vs Time for N07C2.UVDATA.1 Vect aver.  
IF 3 CHAN 1 - 16 STK RR



PLot file version 22 created 03-OCT-2007 16:06:14  
Amplitude and Phase vs Time for N07C2.UVDATA.1 Vect aver.  
IF 4 CHAN 1 - 16 STK RR



PLot file version 23 created 03-OCT-2007 16:06:14  
Amplitude andPhase vs Time for N07C2.UVDATA.1 Vect aver.  
IF 4 CHAN 1 - 16 STK RR



PLot file version 24 created 03-OCT-2007 16:06:14  
Amplitude andPhase vs Time for N07C2.UVDATA.1 Vect aver.  
IF 4 CHAN 1 - 16 STK RR

