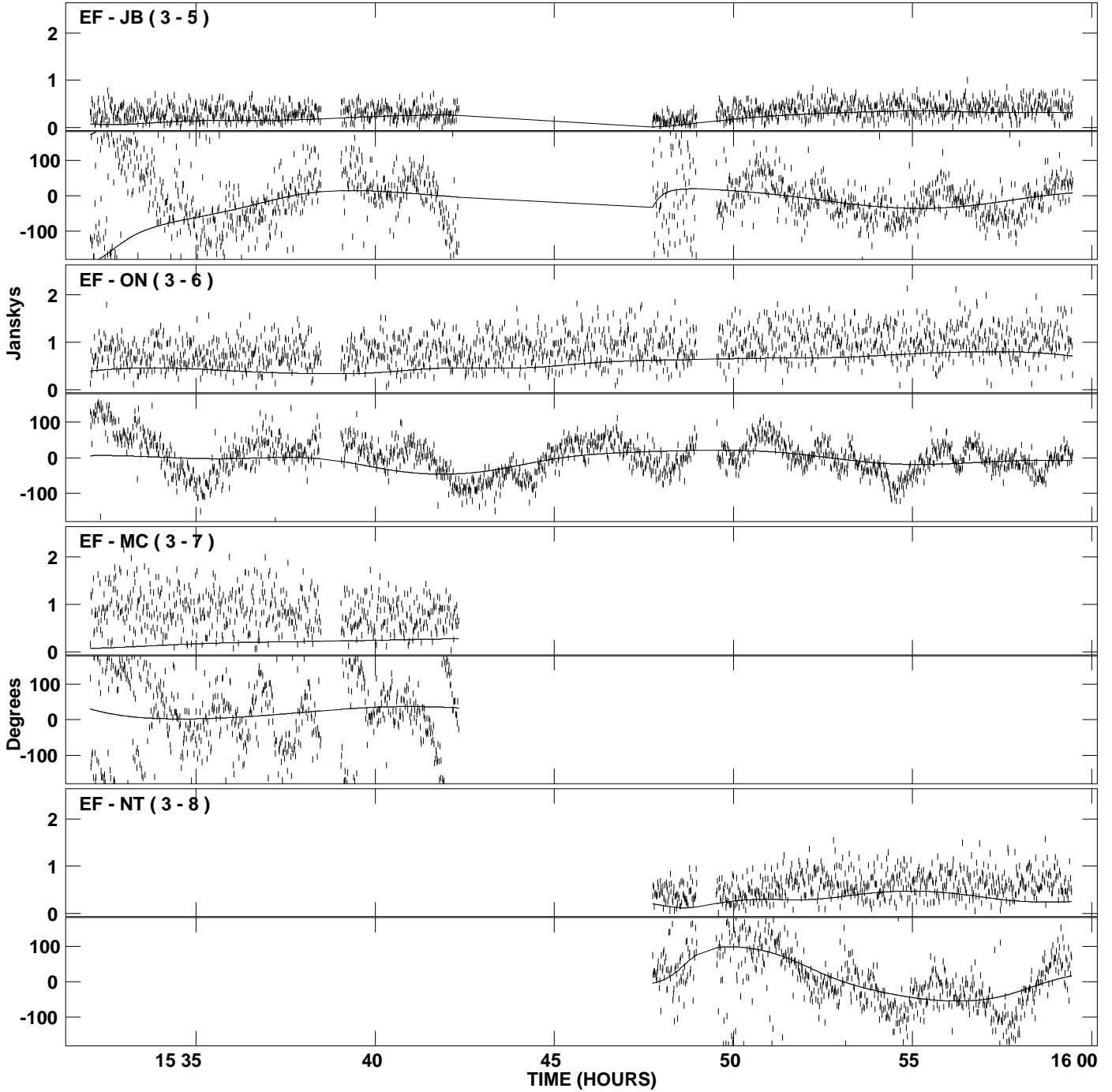
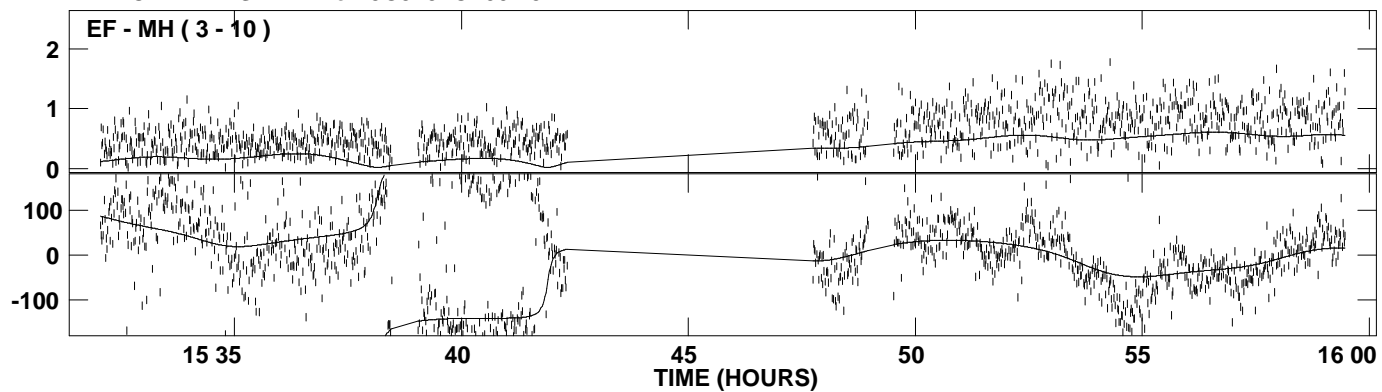


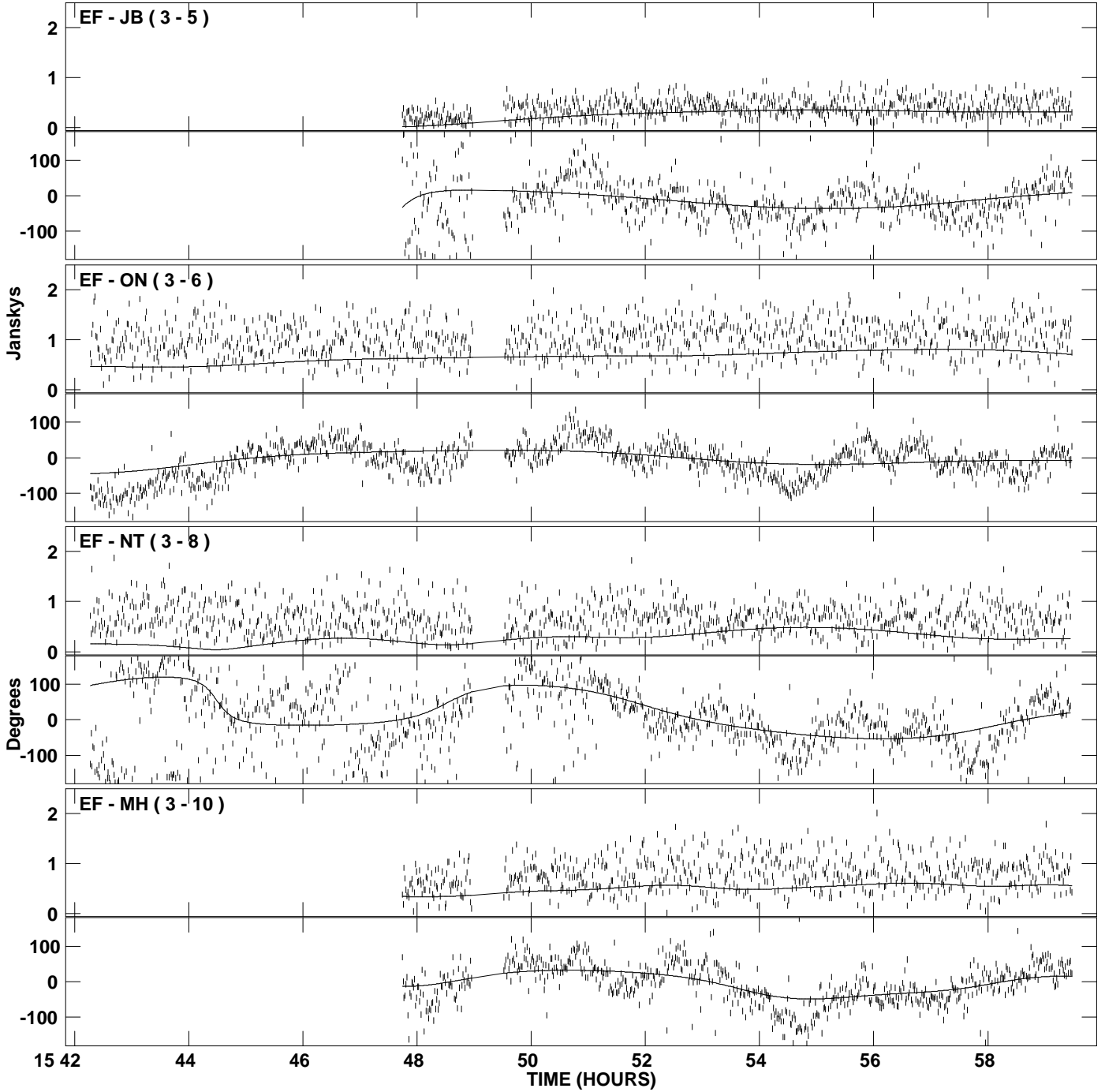
PLot file version 1 created 14-AUG-2008 17:07:06
Amplitude and Phase vs Time for 3C345.MULTI.1 CL # 3
IF 1 CHAN 1 STK LL of 3C345.ICL001.3



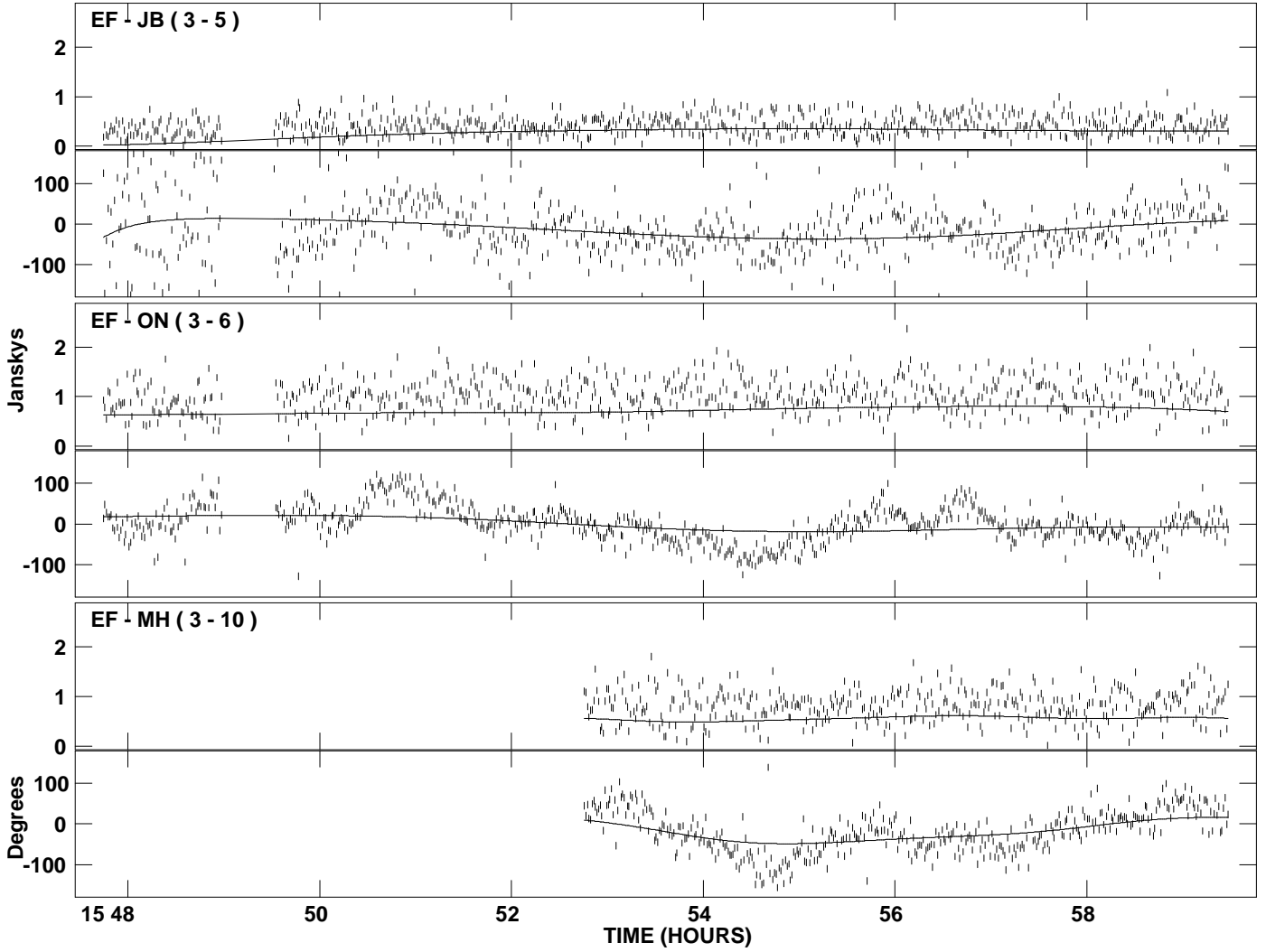
PLot file version 2 created 14-AUG-2008 17:07:06
Amplitude and Phase vs Time for 3C345.MULTI.1 CL # 3
IF 1 CHAN 1 STK LL of 3C345.ICL001.3



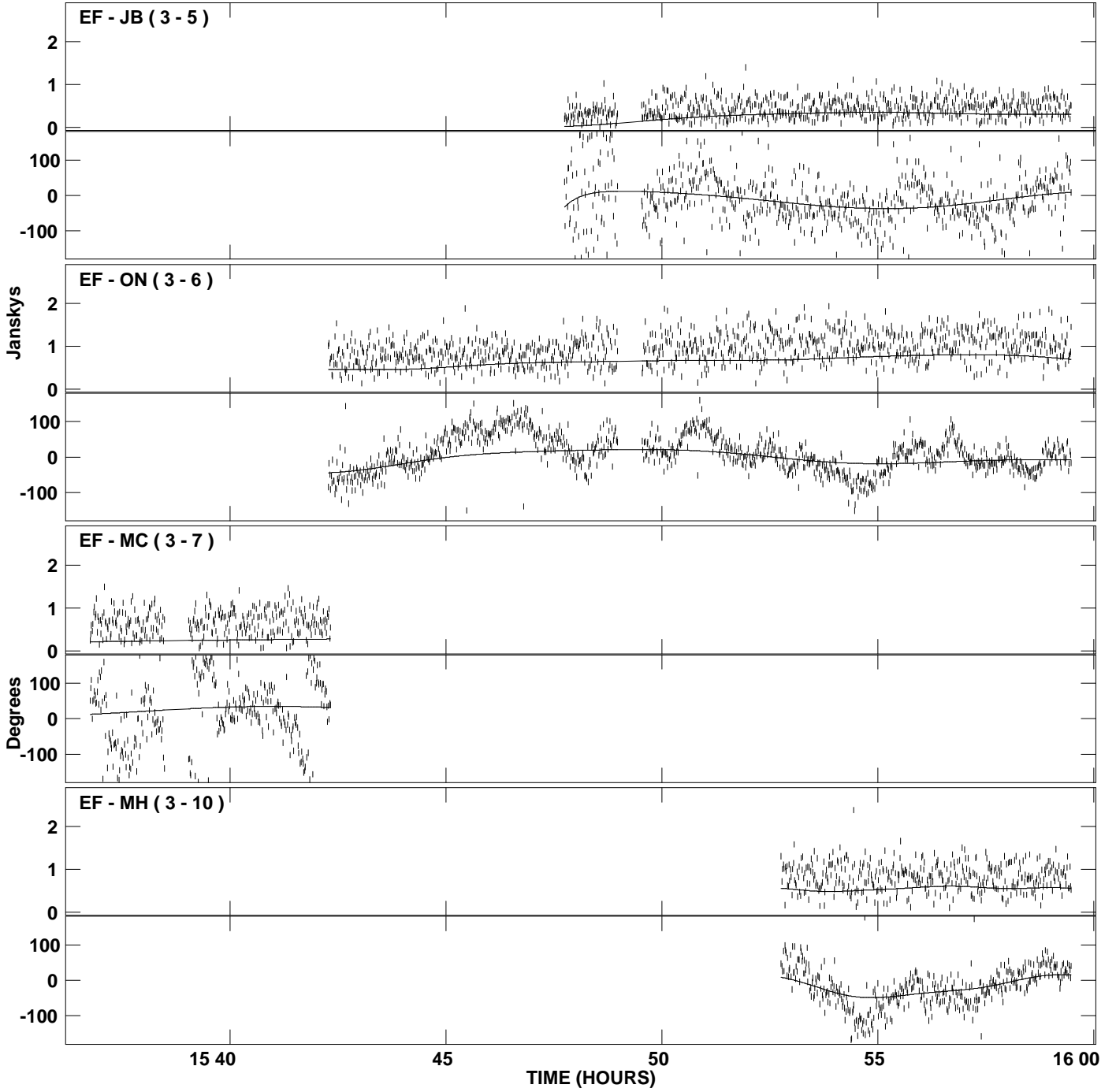
PLot file version 3 created 14-AUG-2008 17:07:07
Amplitude and Phase vs Time for 3C345.MULTI.1 CL # 3
IF 2 CHAN 1 STK LL of 3C345.ICL001.3



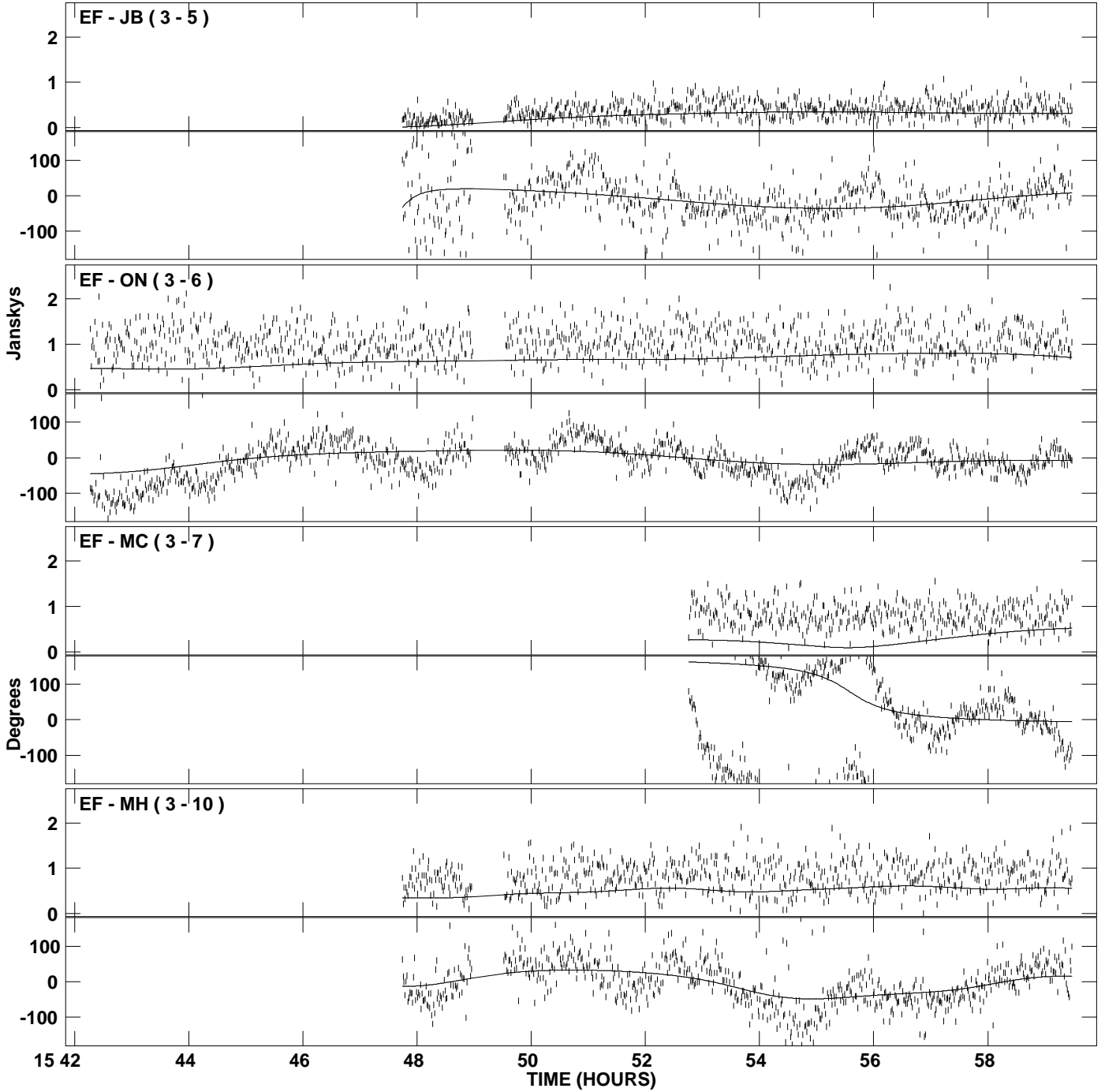
PLot file version 4 created 14-AUG-2008 17:07:08
Amplitude and Phase vs Time for 3C345.MULTI.1 CL # 3
IF 3 CHAN 1 STK LL of 3C345.ICL001.3



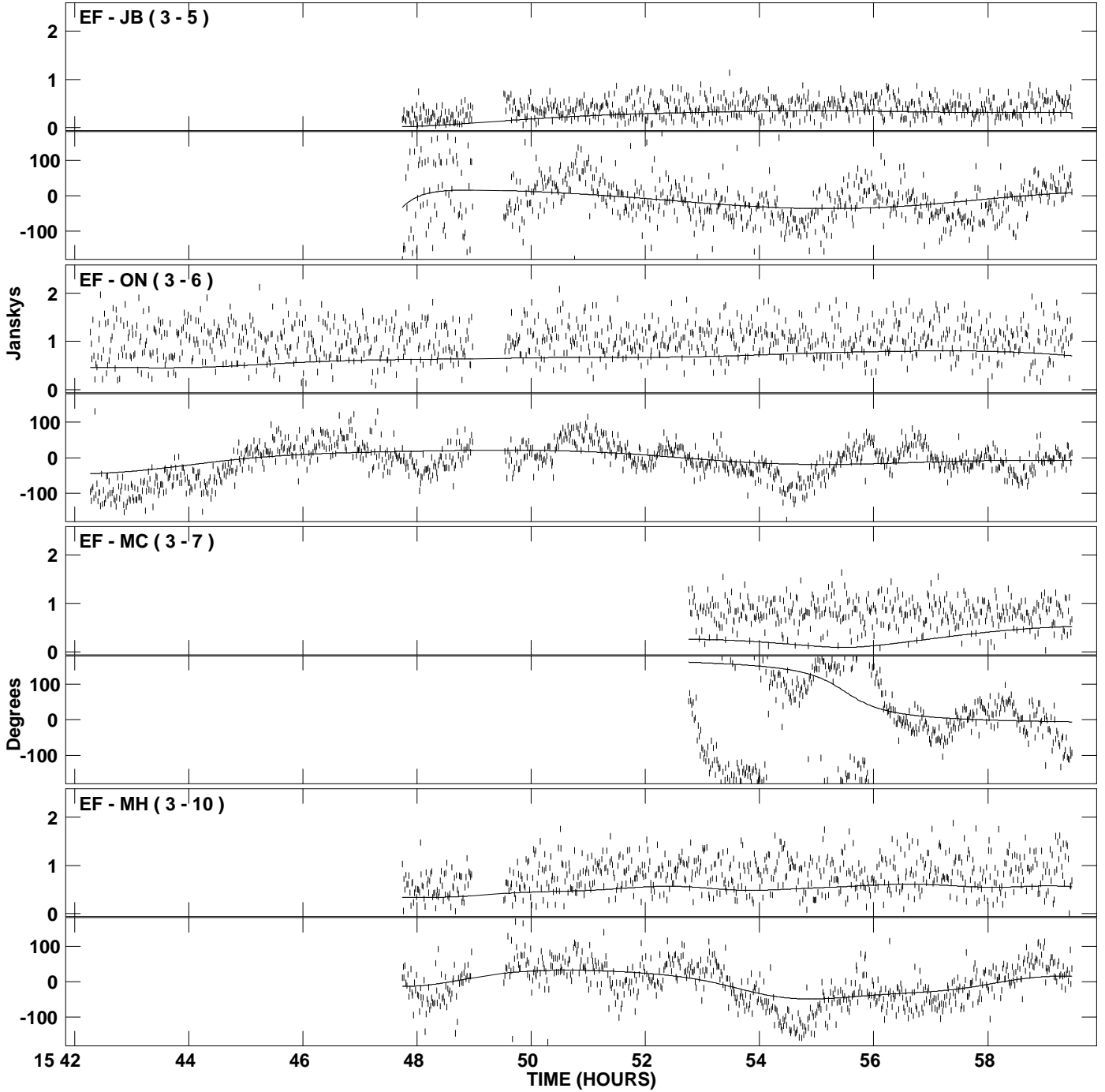
PLot file version 5 created 14-AUG-2008 17:07:09
Amplitude and Phase vs Time for 3C345.MULTI.1 CL # 3
IF 4 CHAN 1 STK LL of 3C345.ICL001.3



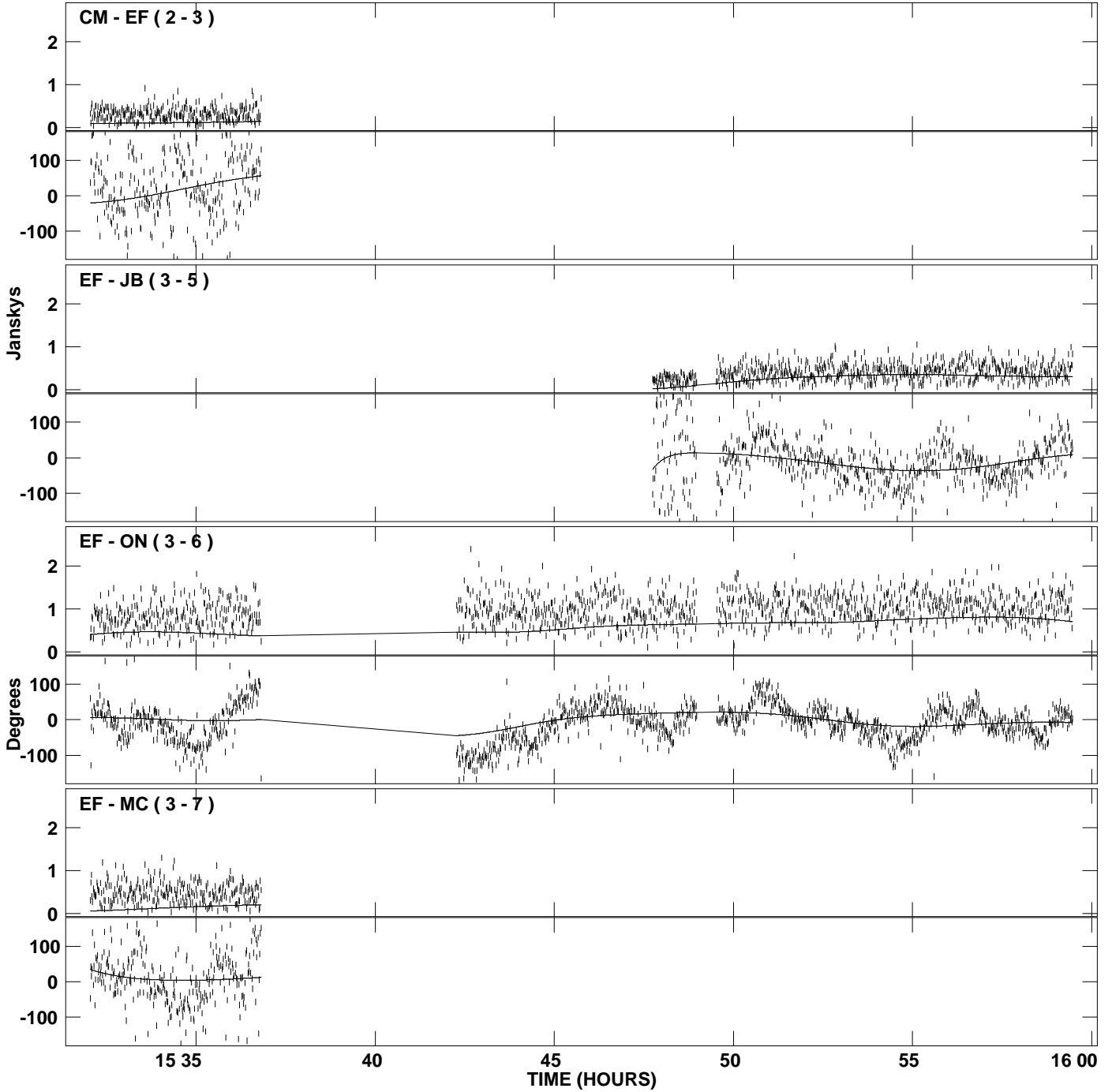
PLot file version 6 created 14-AUG-2008 17:07:10
Amplitude and Phase vs Time for 3C345.MULTI.1 CL # 3
IF 1 CHAN 1 STK RR of 3C345.ICL001.3



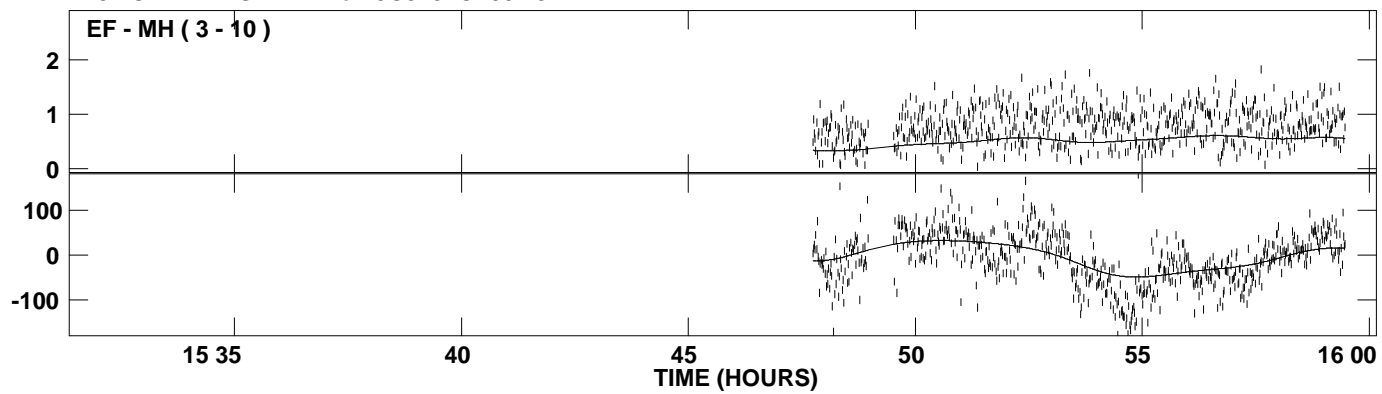
PLot file version 7 created 14-AUG-2008 17:07:11
Amplitude and Phase vs Time for 3C345.MULTI.1 CL # 3
IF 2 CHAN 1 STK RR of 3C345.ICL001.3



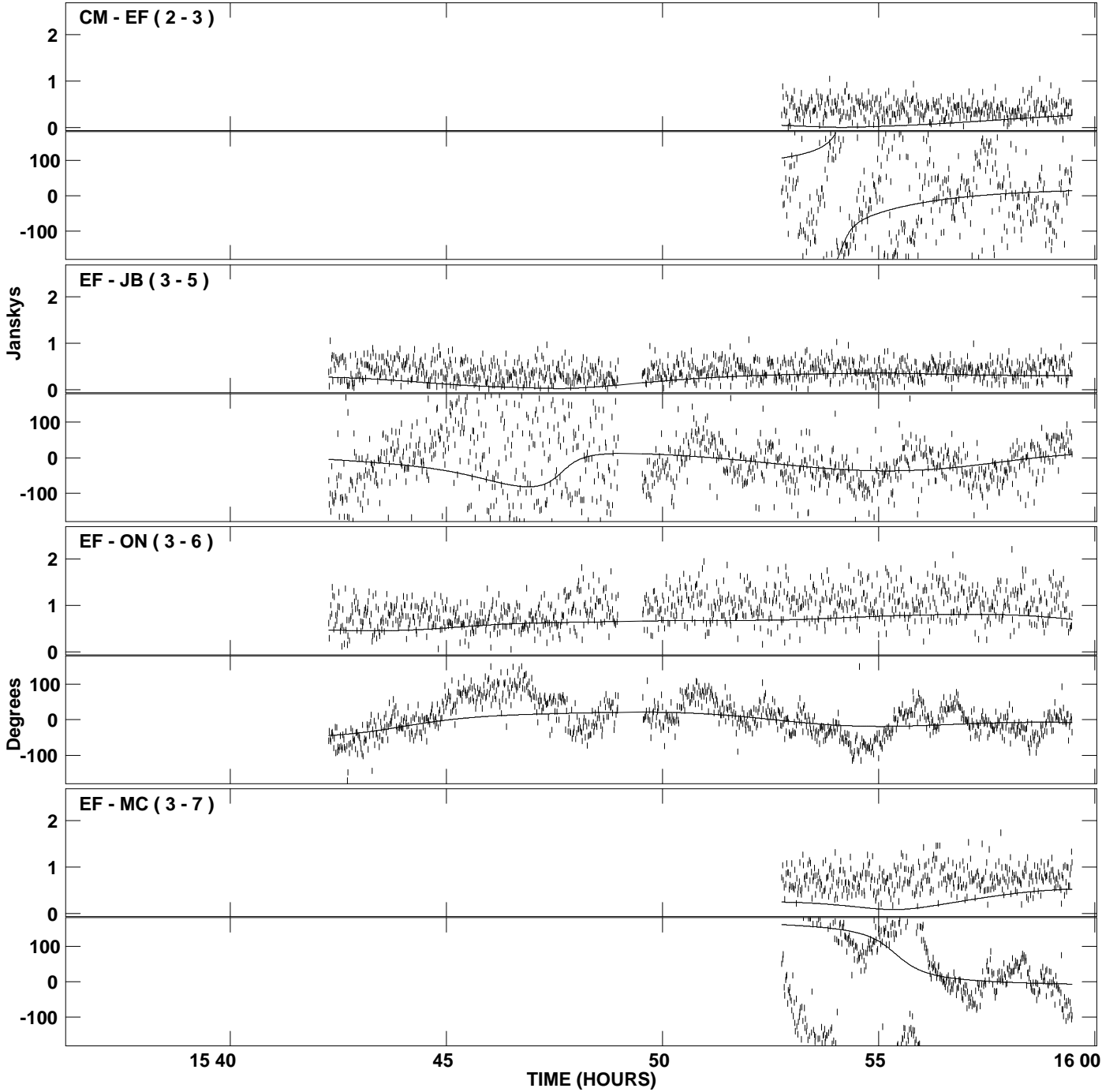
PLot file version 8 created 14-AUG-2008 17:07:12
Amplitude and Phase vs Time for 3C345.MULTI.1 CL # 3
IF 3 CHAN 1 STK RR of 3C345.ICL001.3



PLot file version 9 created 14-AUG-2008 17:07:13
Amplitude andPhase vs Time for 3C345.MULTI.1 CL # 3
IF 3 CHAN 1 STK RR of 3C345.ICL001.3



PLot file version 10 created 14-AUG-2008 17:07:13
Amplitude andPhase vs Time for 3C345.MULTI.1 CL # 3
IF 4 CHAN 1 STK RR of 3C345.ICL001.3



PLot file version 11 created 14-AUG-2008 17:07:13
Amplitude andPhase vs Time for 3C345.MULTI.1 CL # 3
IF 4 CHAN 1 STK RR of 3C345.ICL001.3

