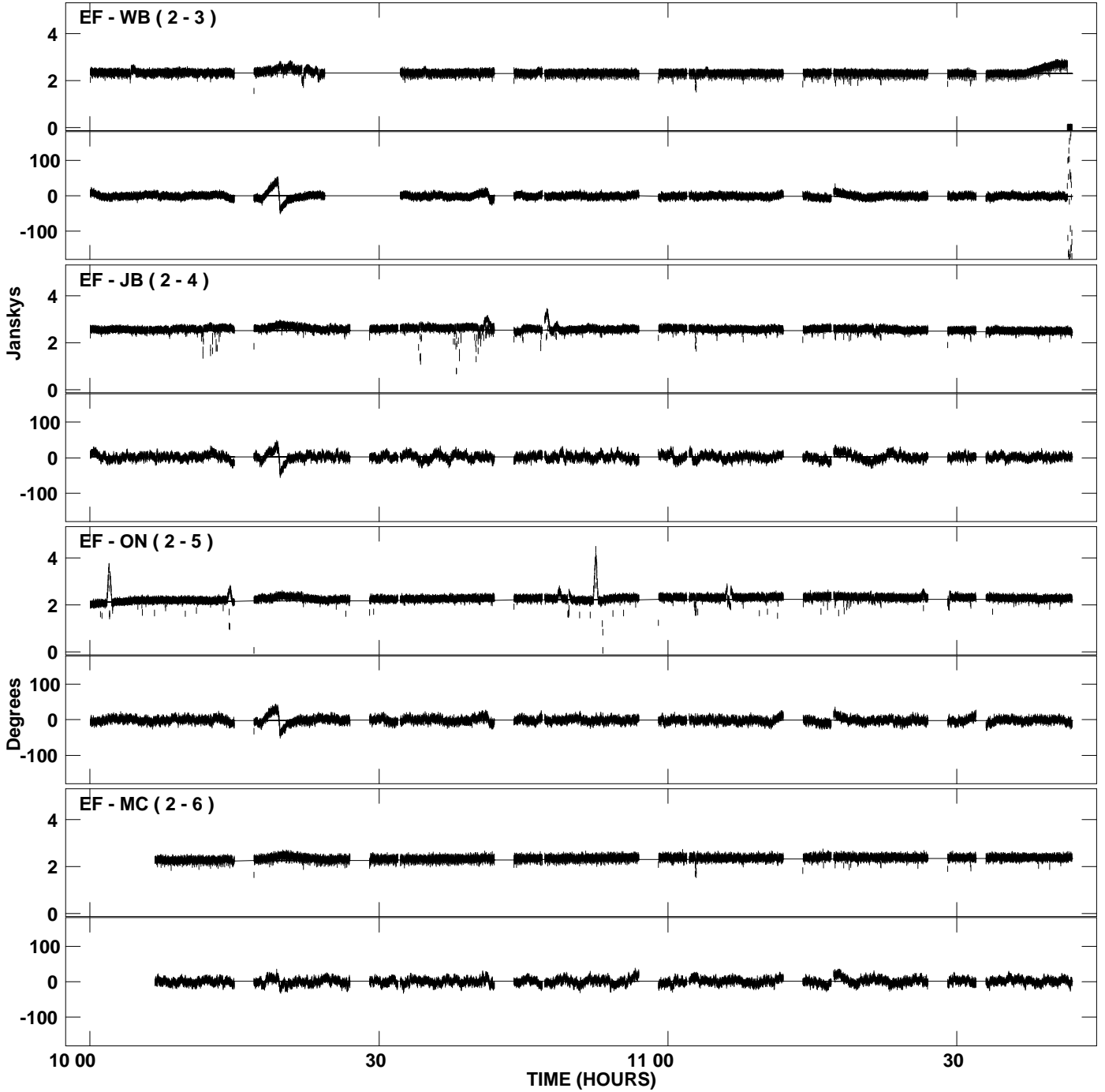
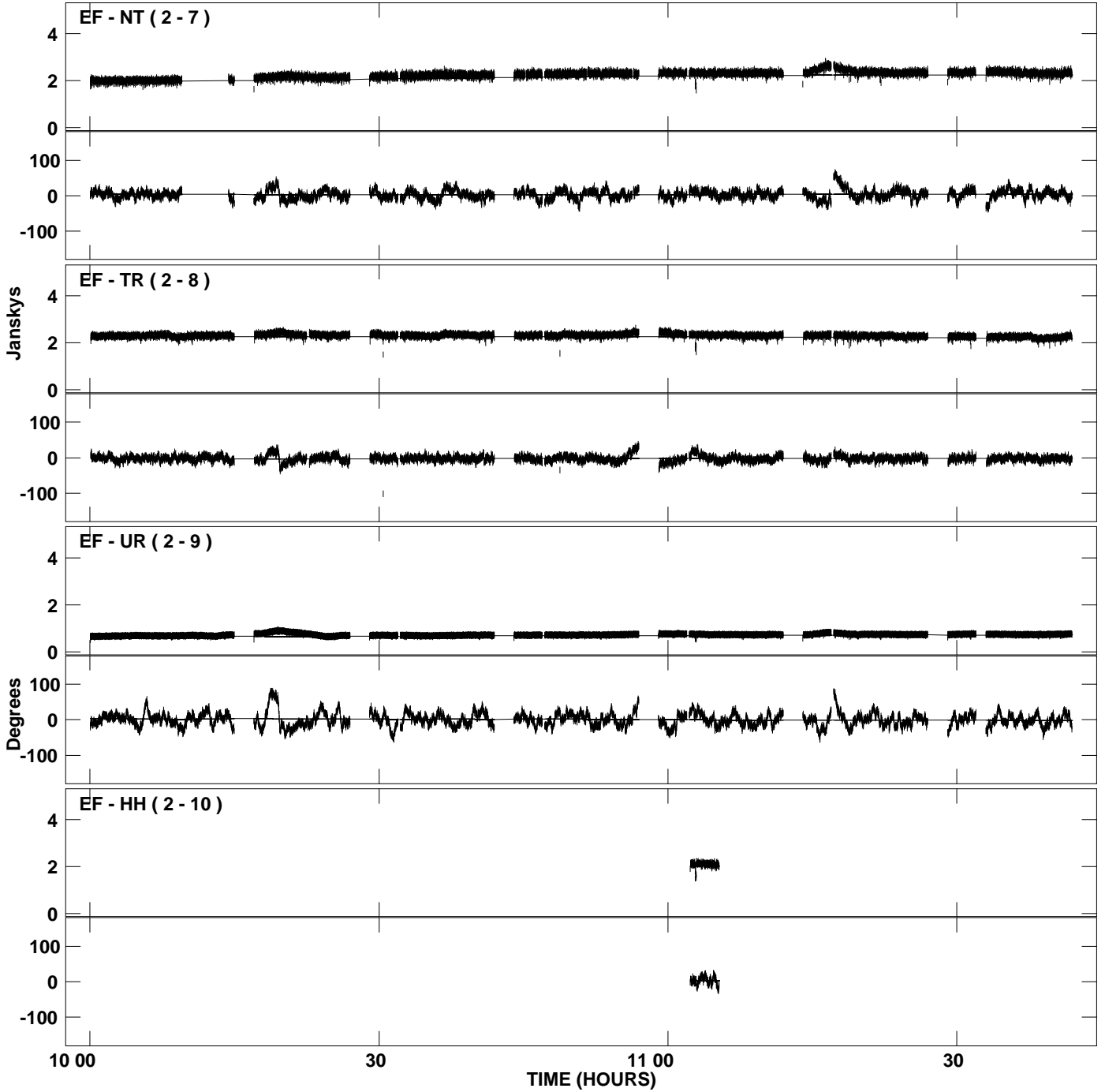


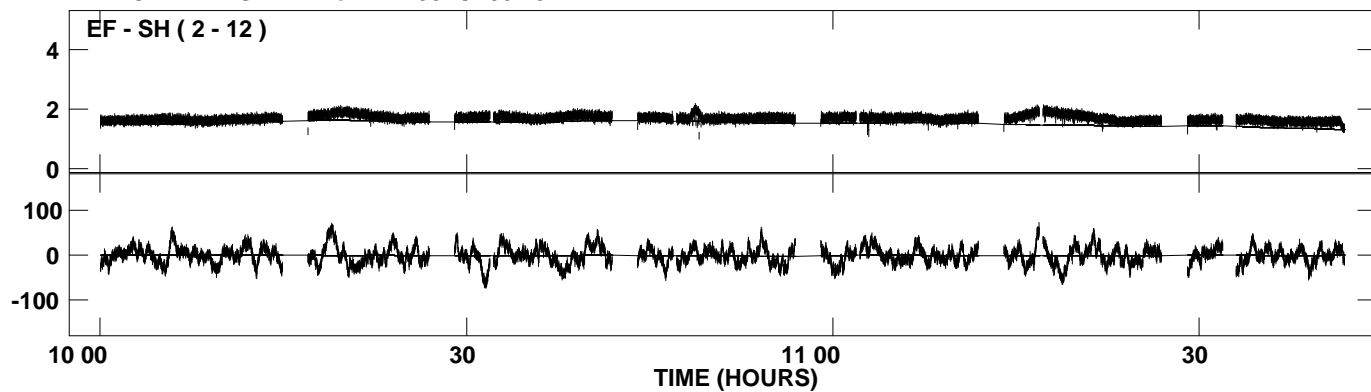
PLot file version 1 created 18-NOV-2008 16:50:23  
Amplitude and Phase vs Time for DA193.MULTI.1 CL # 5  
IF 1 CHAN 1 STK LL of DA193.ICL001.5



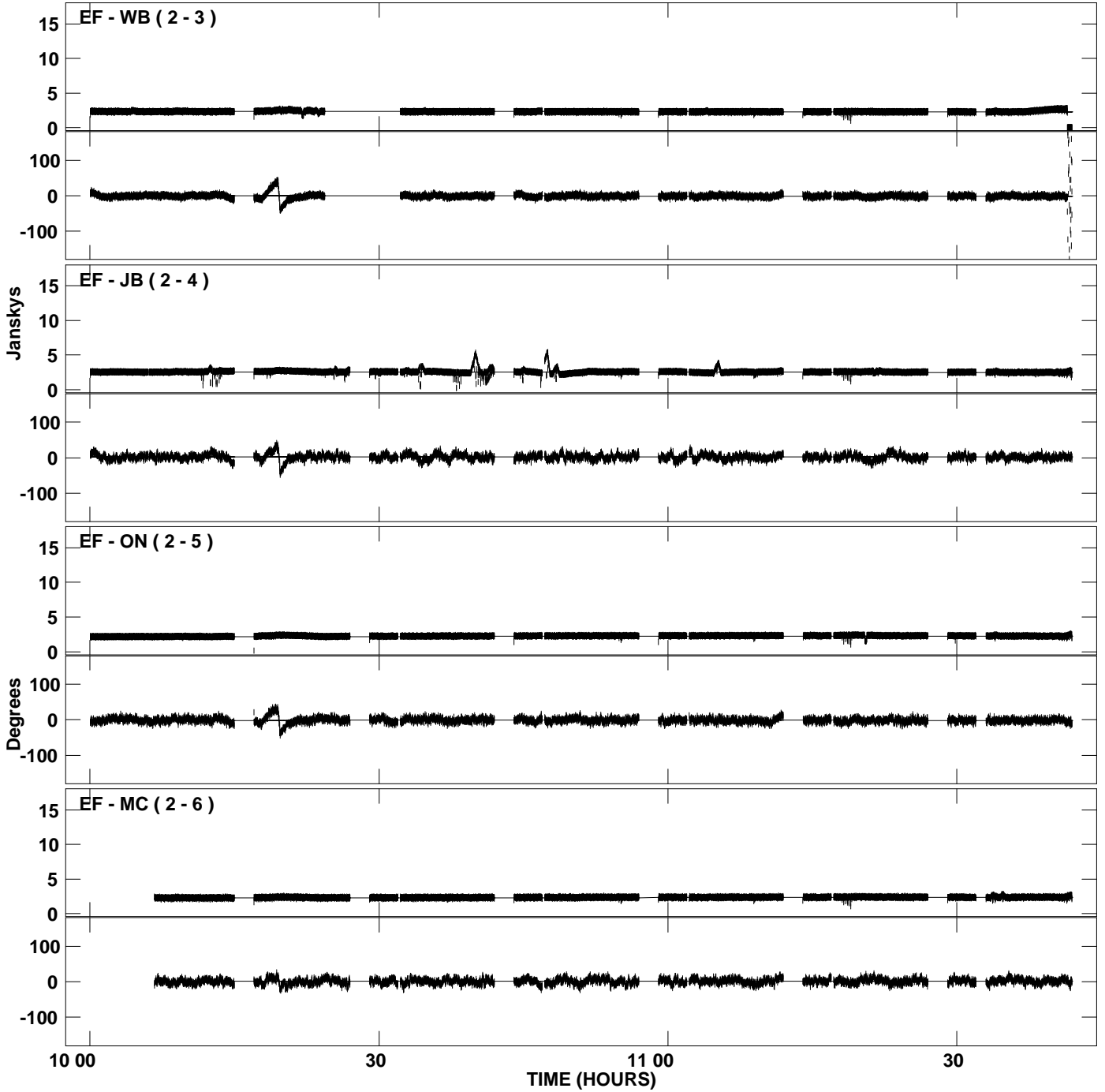
PLot file version 2 created 18-NOV-2008 16:50:23  
Amplitude andPhase vs Time for DA193.MULTI.1 CL # 5  
IF 1 CHAN 1 STK LL of DA193.ICL001.5



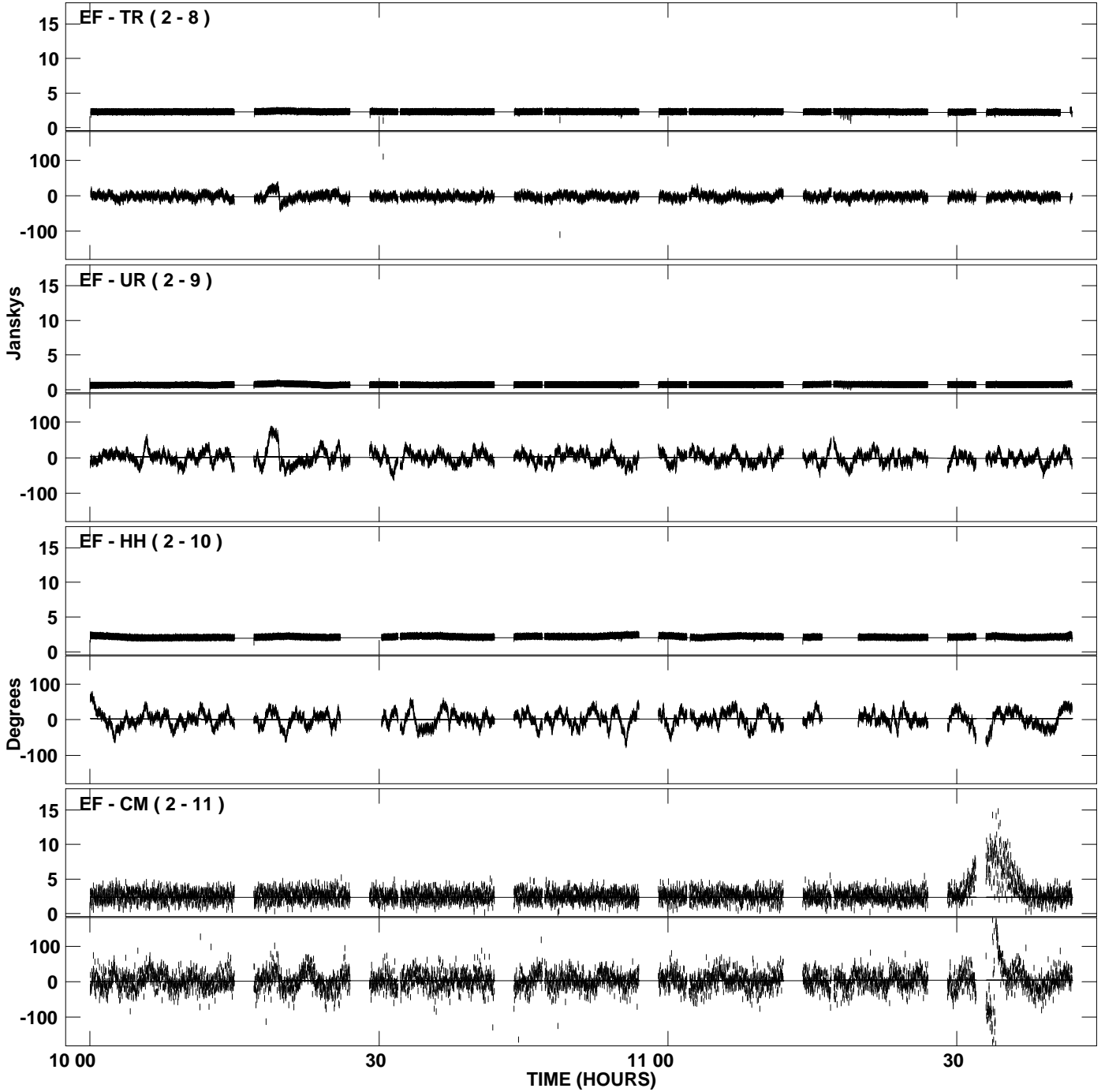
PLot file version 3 created 18-NOV-2008 16:50:23  
Amplitude andPhase vs Time for DA193.MULTI.1 CL # 5  
IF 1 CHAN 1 STK LL of DA193.ICL001.5



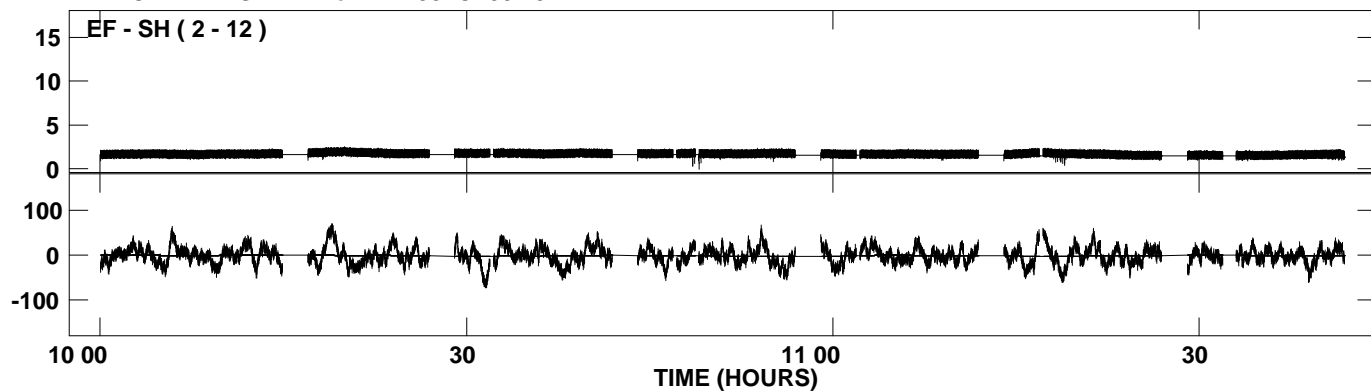
PLot file version 4 created 18-NOV-2008 16:50:24  
Amplitude andPhase vs Time for DA193.MULTI.1 CL # 5  
IF 2 CHAN 1 STK LL of DA193.ICL001.5



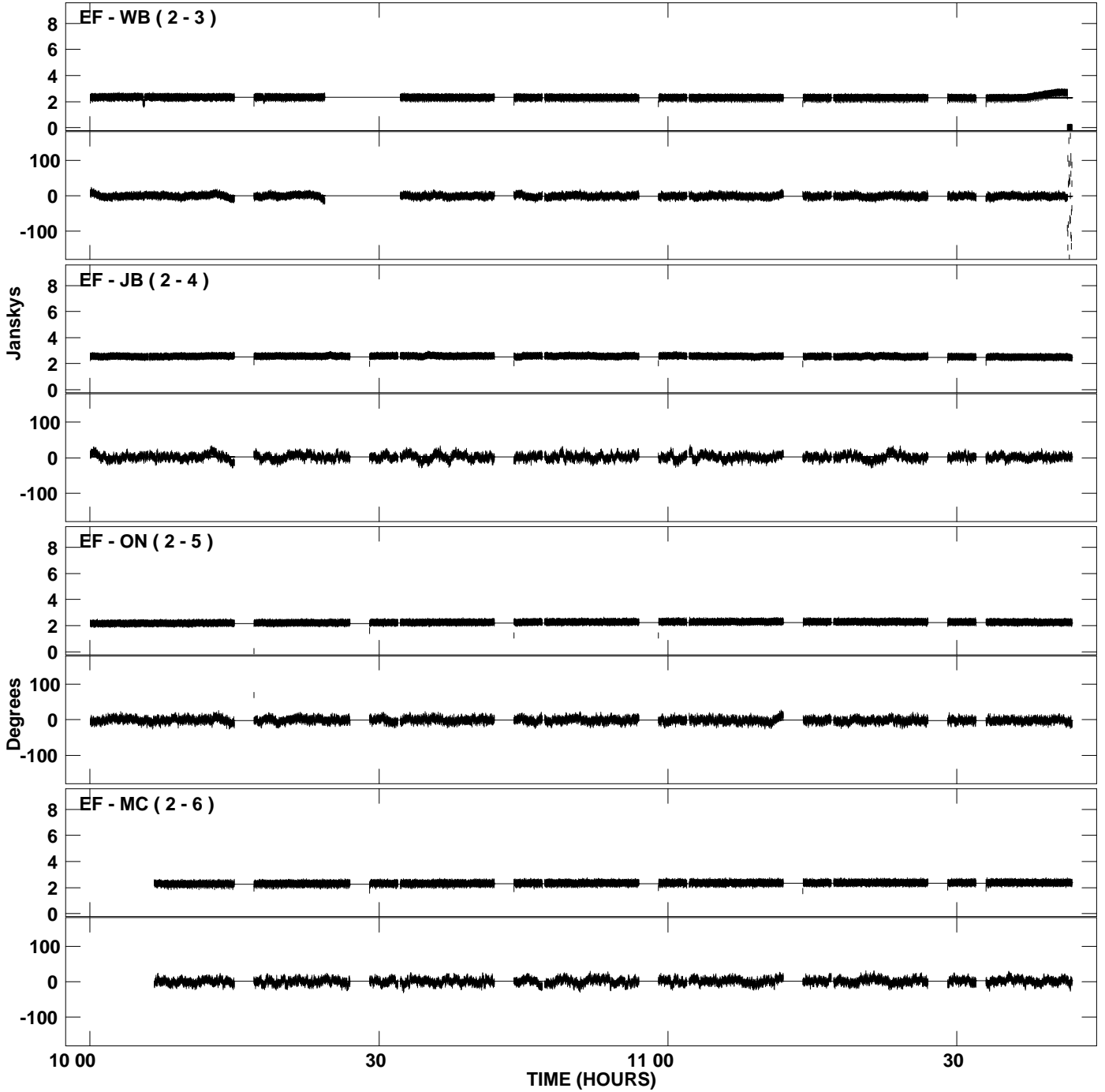
PLot file version 5 created 18-NOV-2008 16:50:24  
Amplitude andPhase vs Time for DA193.MULTI.1 CL # 5  
IF 2 CHAN 1 STK LL of DA193.ICL001.5



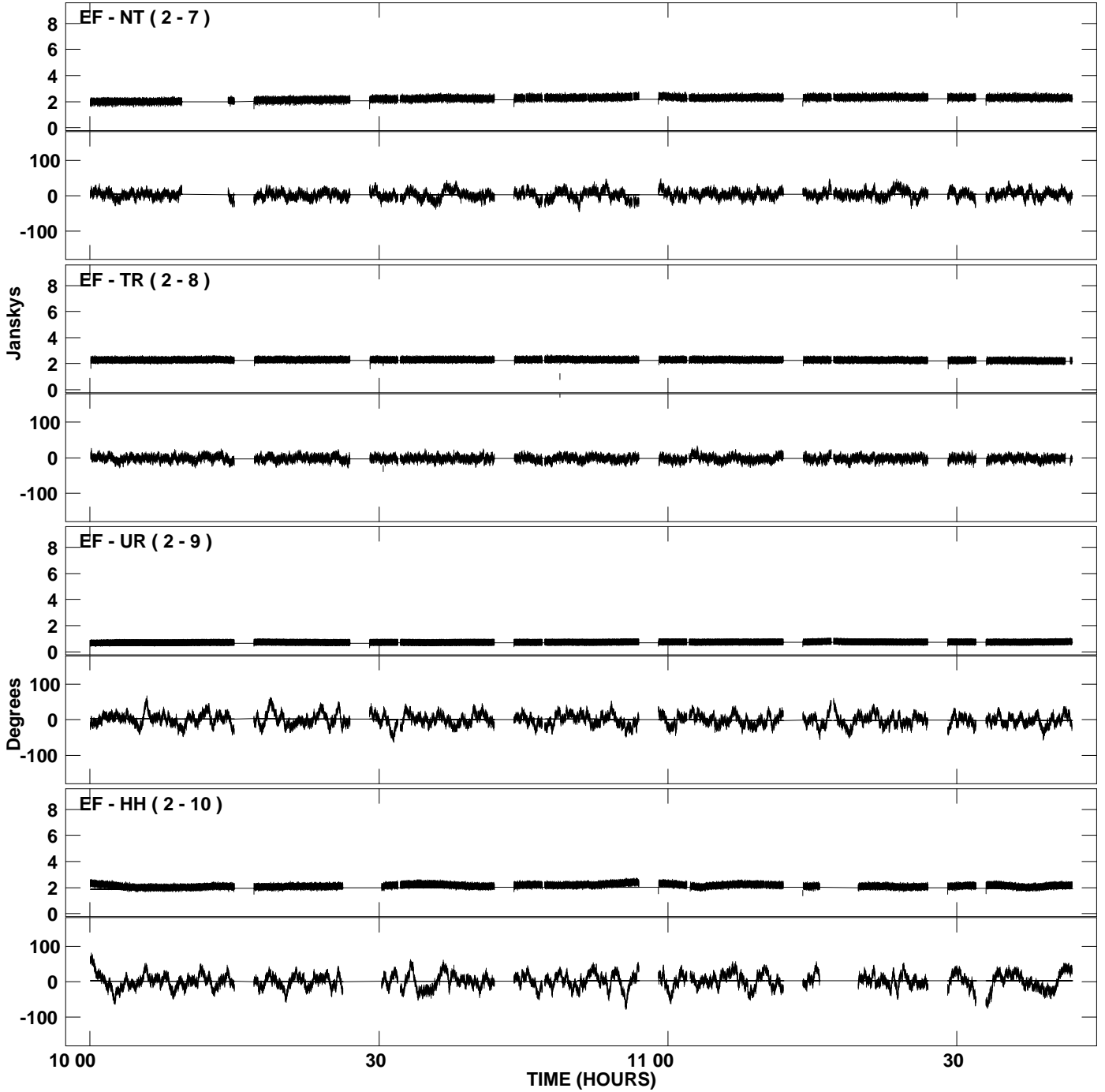
PLot file version 6 created 18-NOV-2008 16:50:24  
Amplitude andPhase vs Time for DA193.MULTI.1 CL # 5  
IF 2 CHAN 1 STK LL of DA193.ICL001.5



PLot file version 7 created 18-NOV-2008 16:50:25  
Amplitude and Phase vs Time for DA193.MULTI.1 CL # 5  
IF 3 CHAN 1 STK LL of DA193.ICL001.5

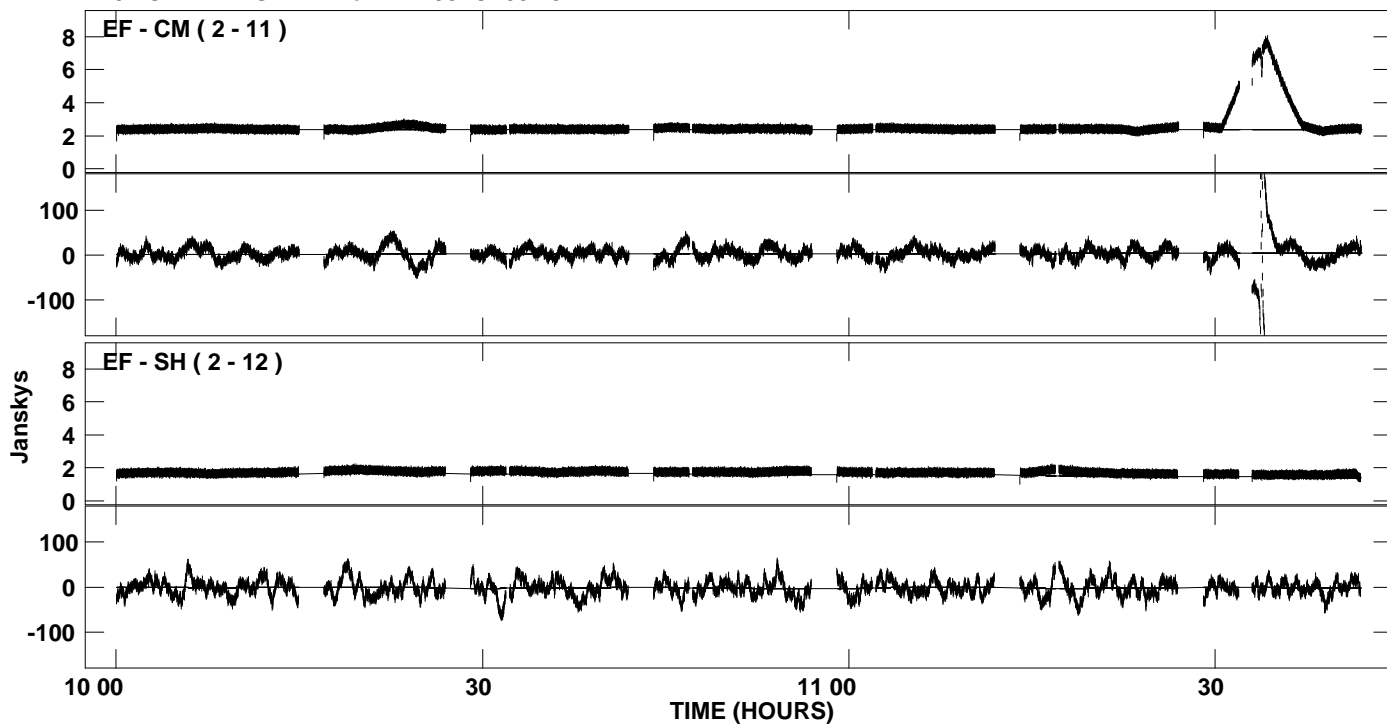


PLot file version 8 created 18-NOV-2008 16:50:25  
Amplitude and Phase vs Time for DA193.MULTI.1 CL # 5  
IF 3 CHAN 1 STK LL of DA193.ICL001.5

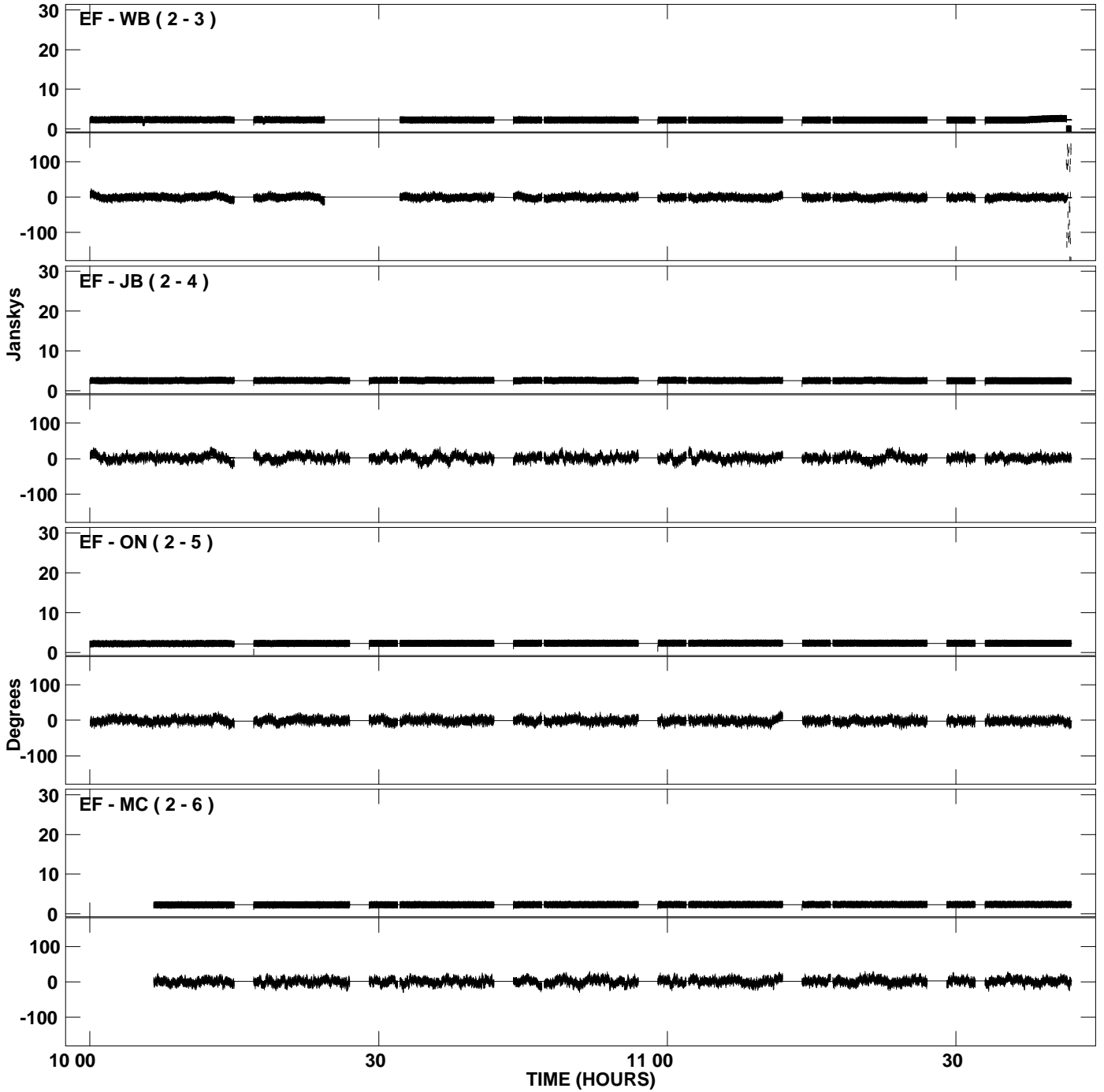




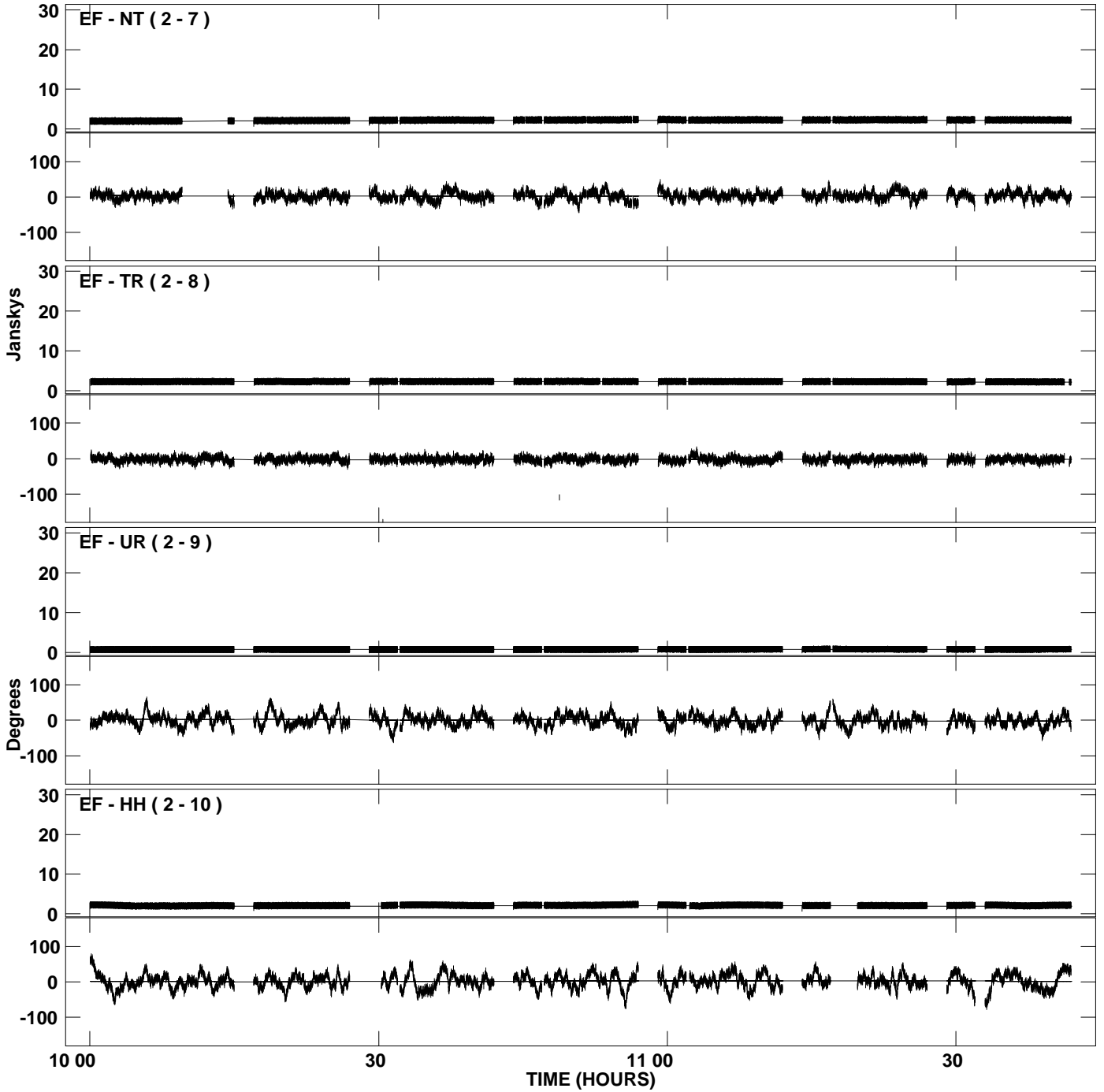
PLot file version 9 created 18-NOV-2008 16:50:25  
Amplitude and Phase vs Time for DA193.MULTI.1 CL # 5  
IF 3 CHAN 1 STK LL of DA193.ICL001.5



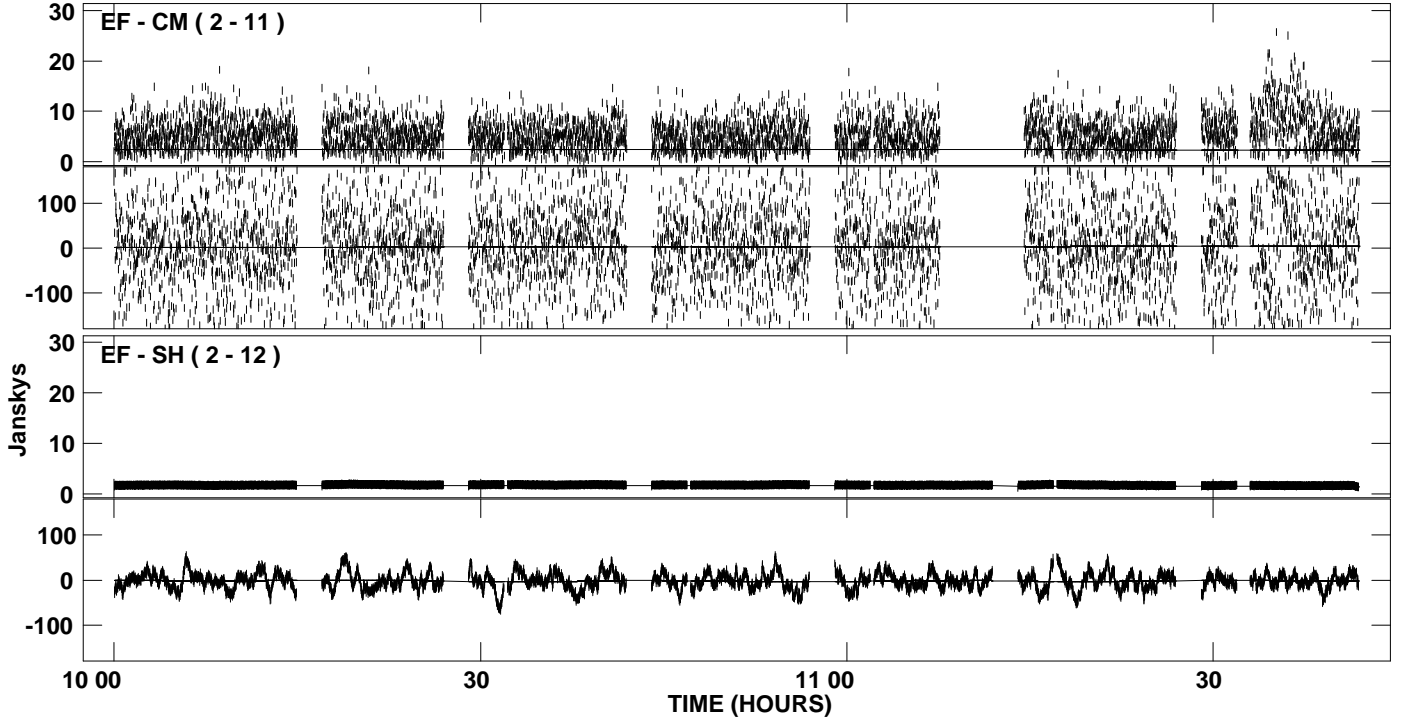
PLot file version 10 created 18-NOV-2008 16:50:26  
Amplitude and Phase vs Time for DA193.MULTI.1 CL # 5  
IF 4 CHAN 1 STK LL of DA193.ICL001.5



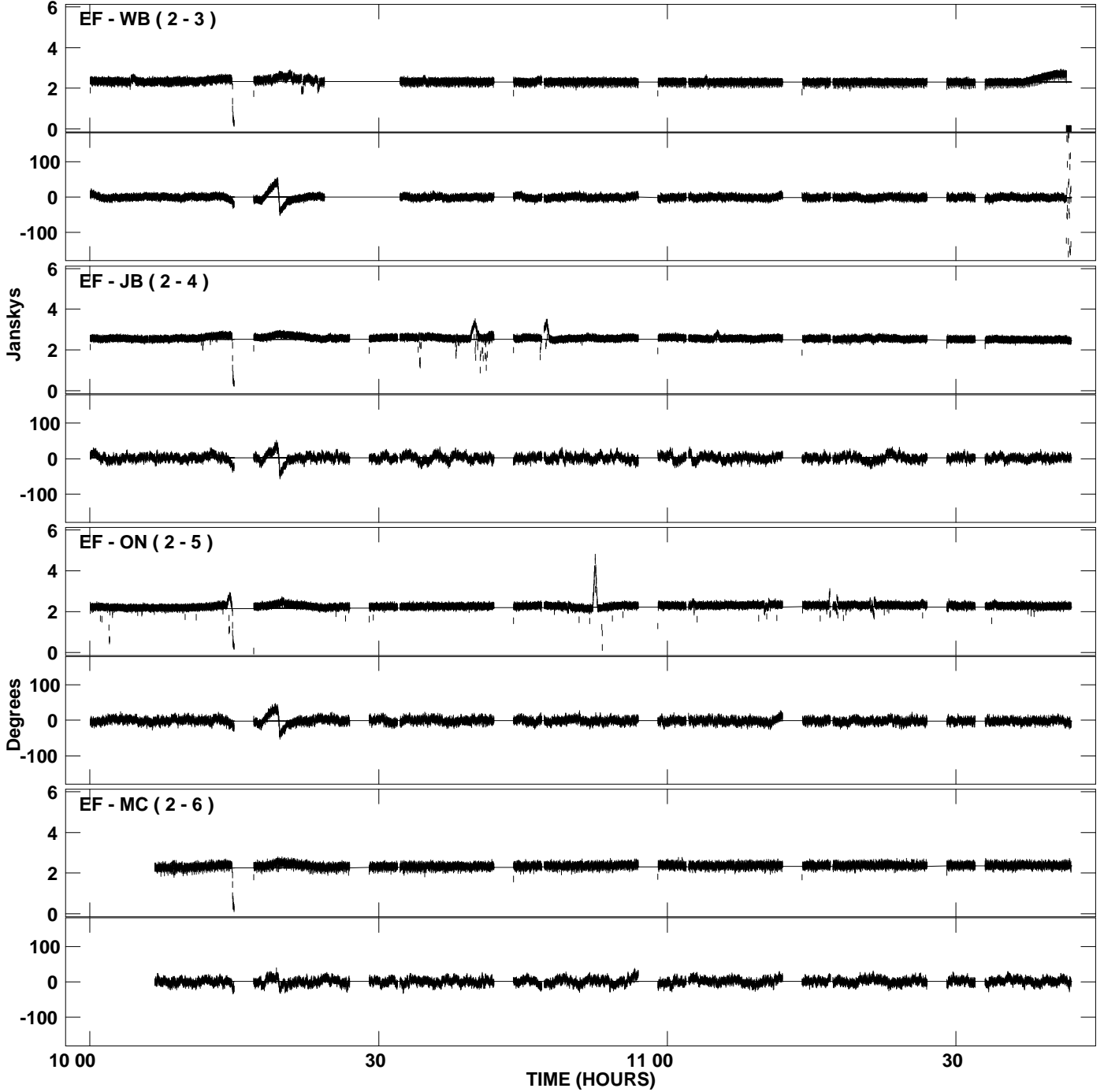
PLot file version 11 created 18-NOV-2008 16:50:26  
Amplitude and Phase vs Time for DA193.MULTI.1 CL # 5  
IF 4 CHAN 1 STK LL of DA193.ICL001.5



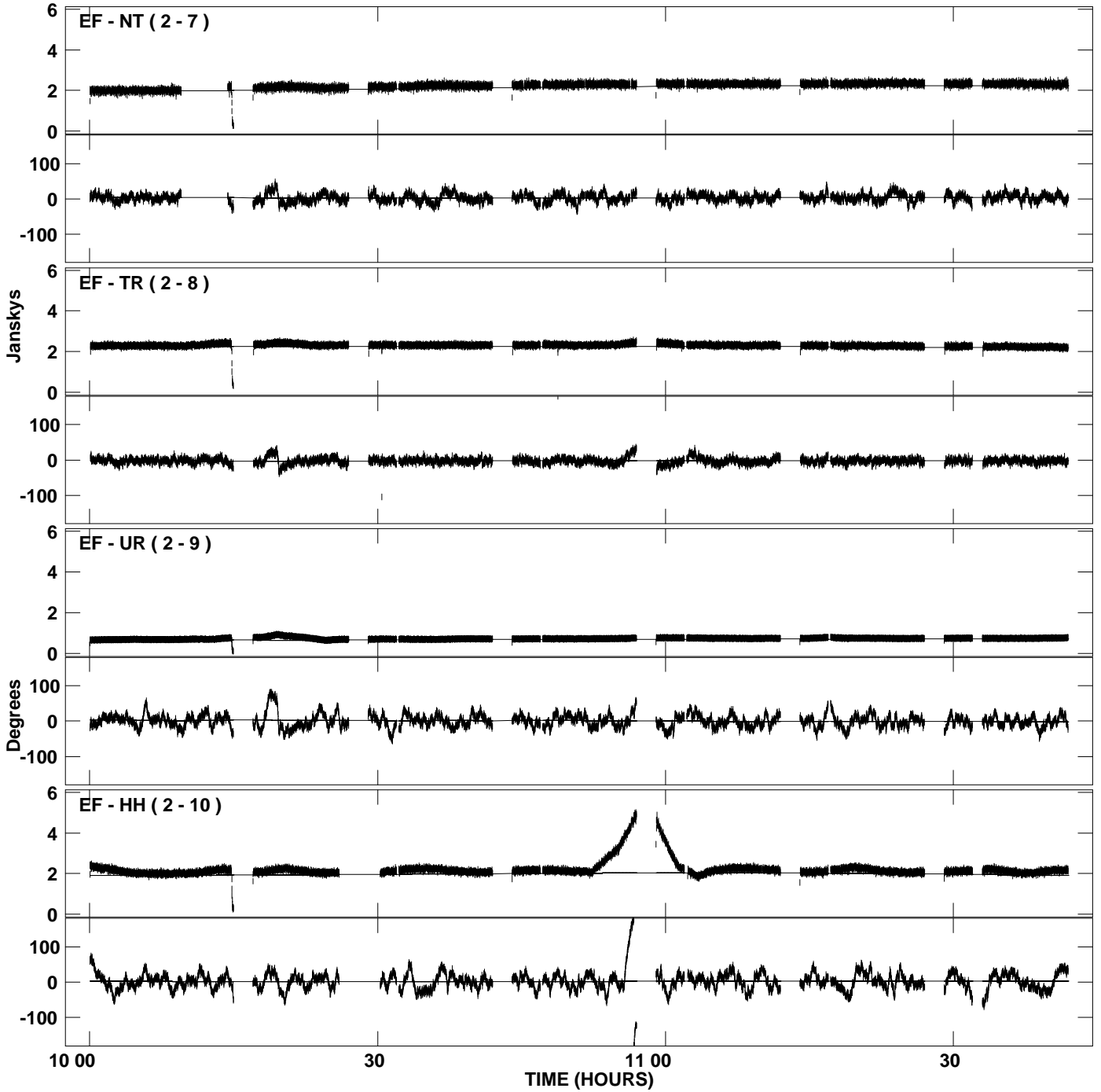
PLot file version 12 created 18-NOV-2008 16:50:26  
Amplitude andPhase vs Time for DA193.MULTI.1 CL # 5  
IF 4 CHAN 1 STK LL of DA193.ICL001.5



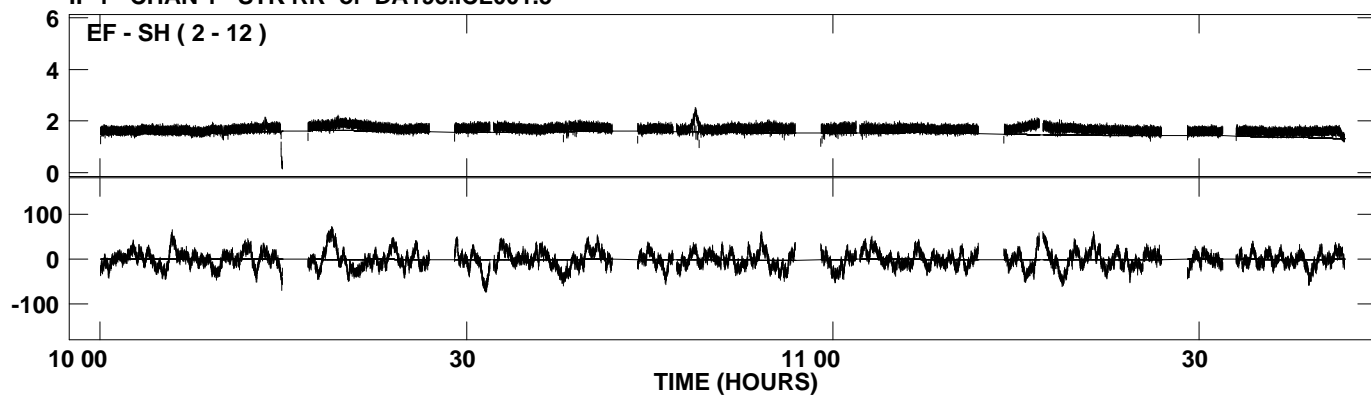
PLot file version 13 created 18-NOV-2008 16:50:27  
Amplitude and Phase vs Time for DA193.MULTI.1 CL # 5  
IF 1 CHAN 1 STK RR of DA193.ICL001.5



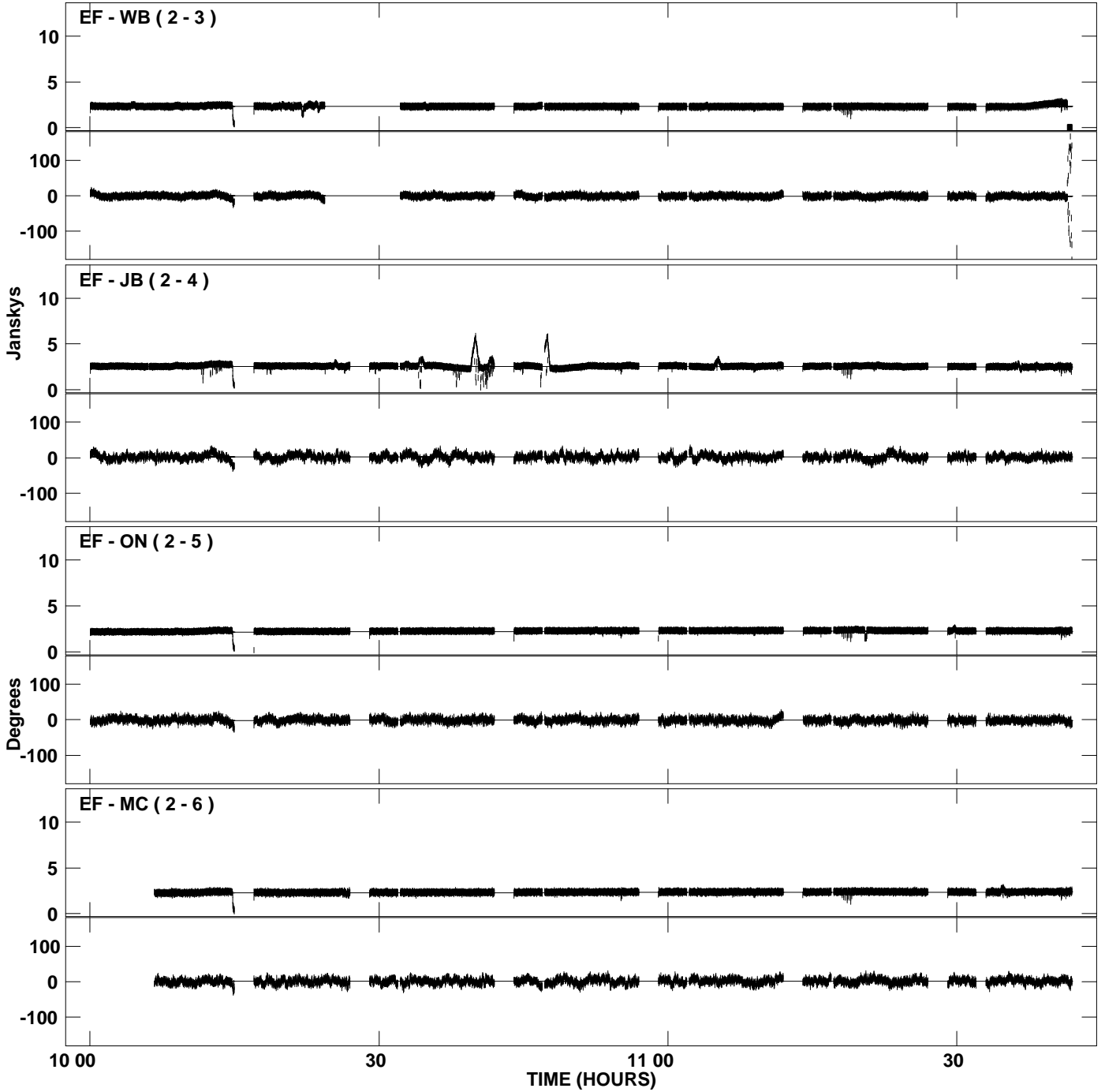
PLot file version 14 created 18-NOV-2008 16:50:27  
Amplitude and Phase vs Time for DA193.MULTI.1 CL # 5  
IF 1 CHAN 1 STK RR of DA193.ICL001.5



PLot file version 15 created 18-NOV-2008 16:50:27  
Amplitude andPhase vs Time for DA193.MULTI.1 CL # 5  
IF 1 CHAN 1 STK RR of DA193.ICL001.5

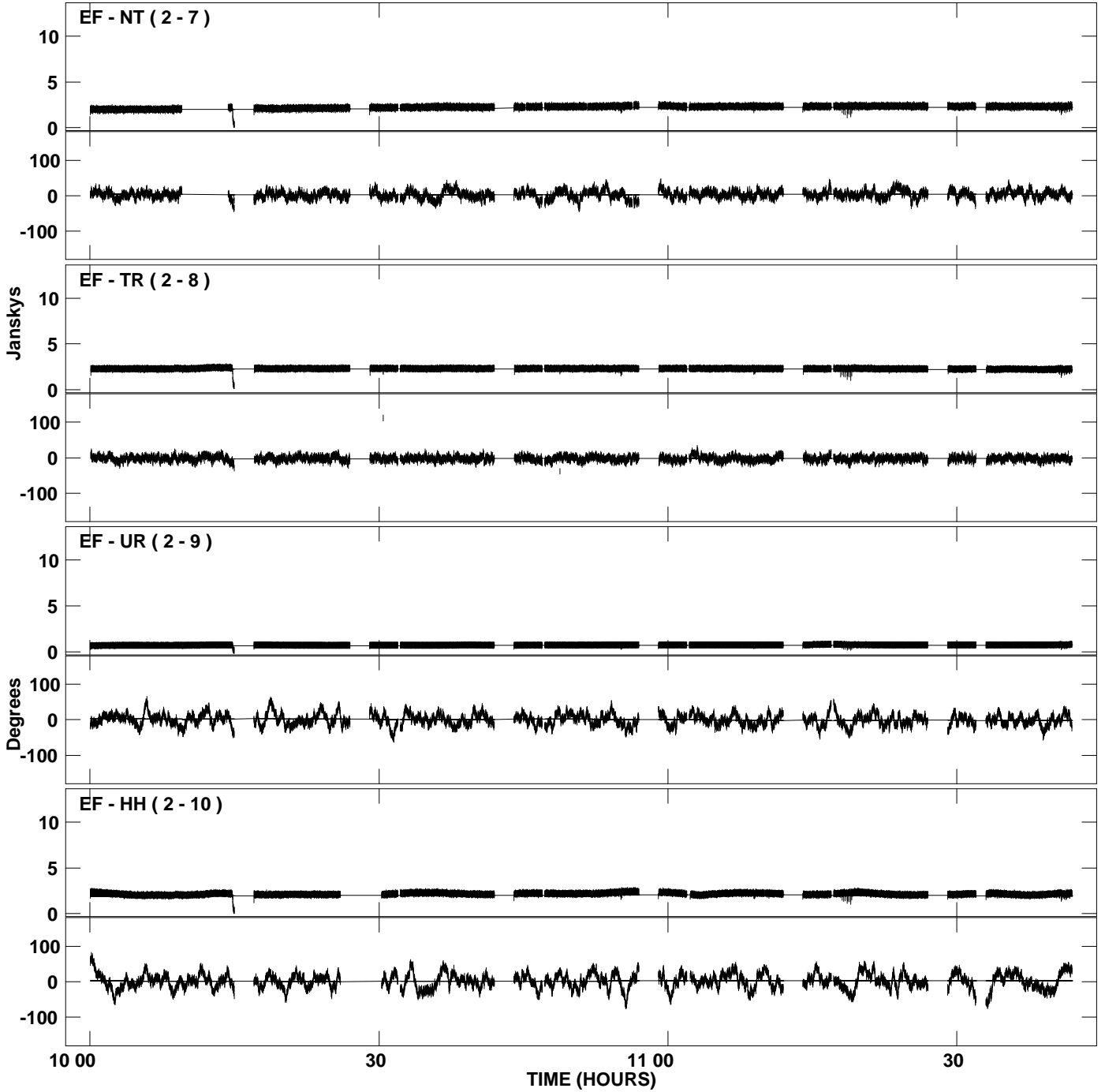


PLot file version 16 created 18-NOV-2008 16:50:28  
Amplitude and Phase vs Time for DA193.MULTI.1 CL # 5  
IF 2 CHAN 1 STK RR of DA193.ICL001.5

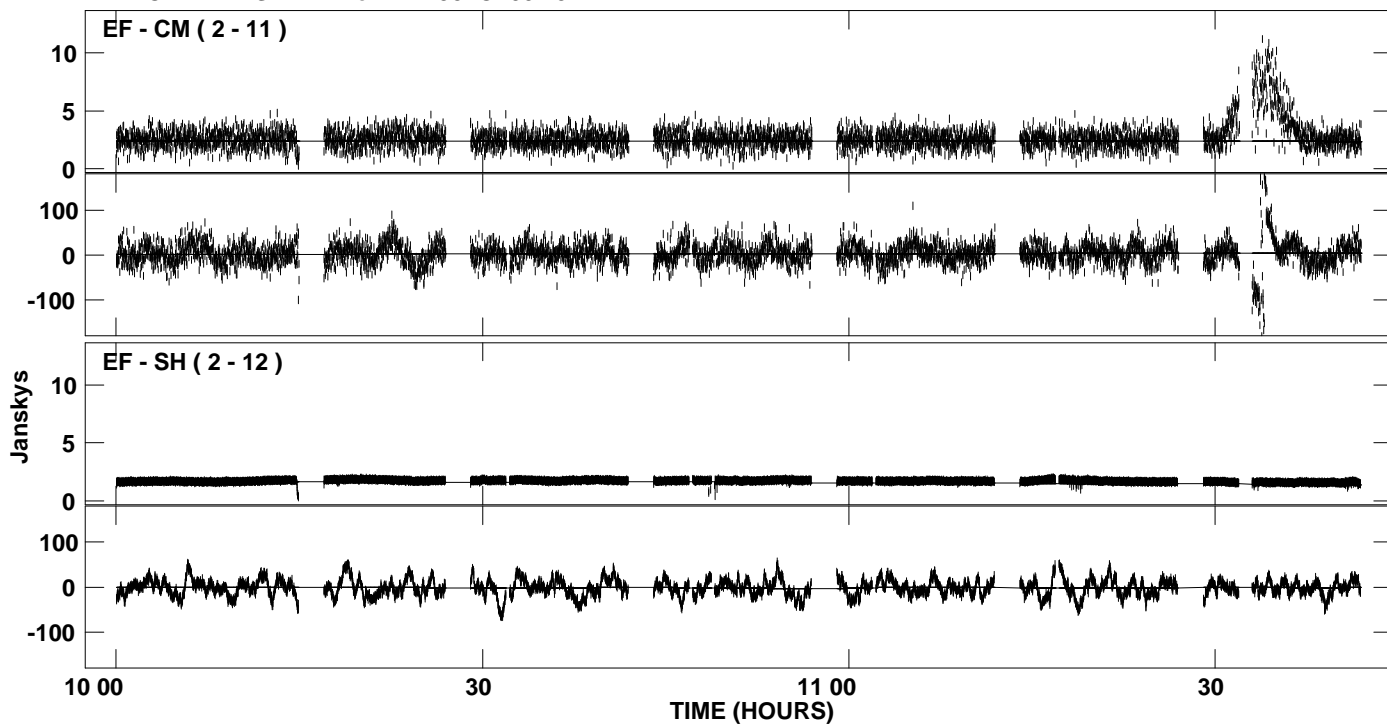




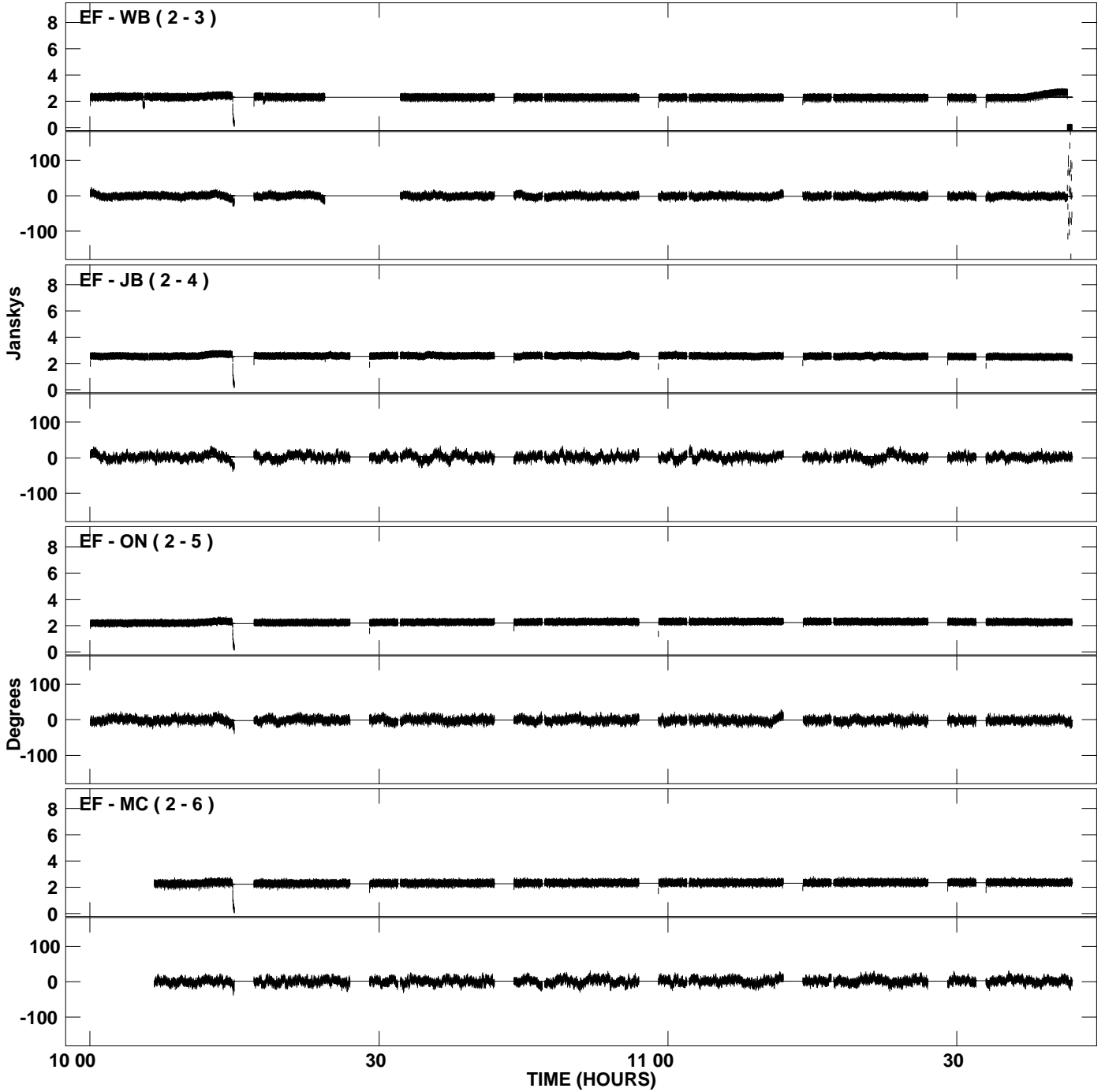
PLot file version 17 created 18-NOV-2008 16:50:29  
Amplitude and Phase vs Time for DA193.MULTI.1 CL # 5  
IF 2 CHAN 1 STK RR of DA193.ICL001.5



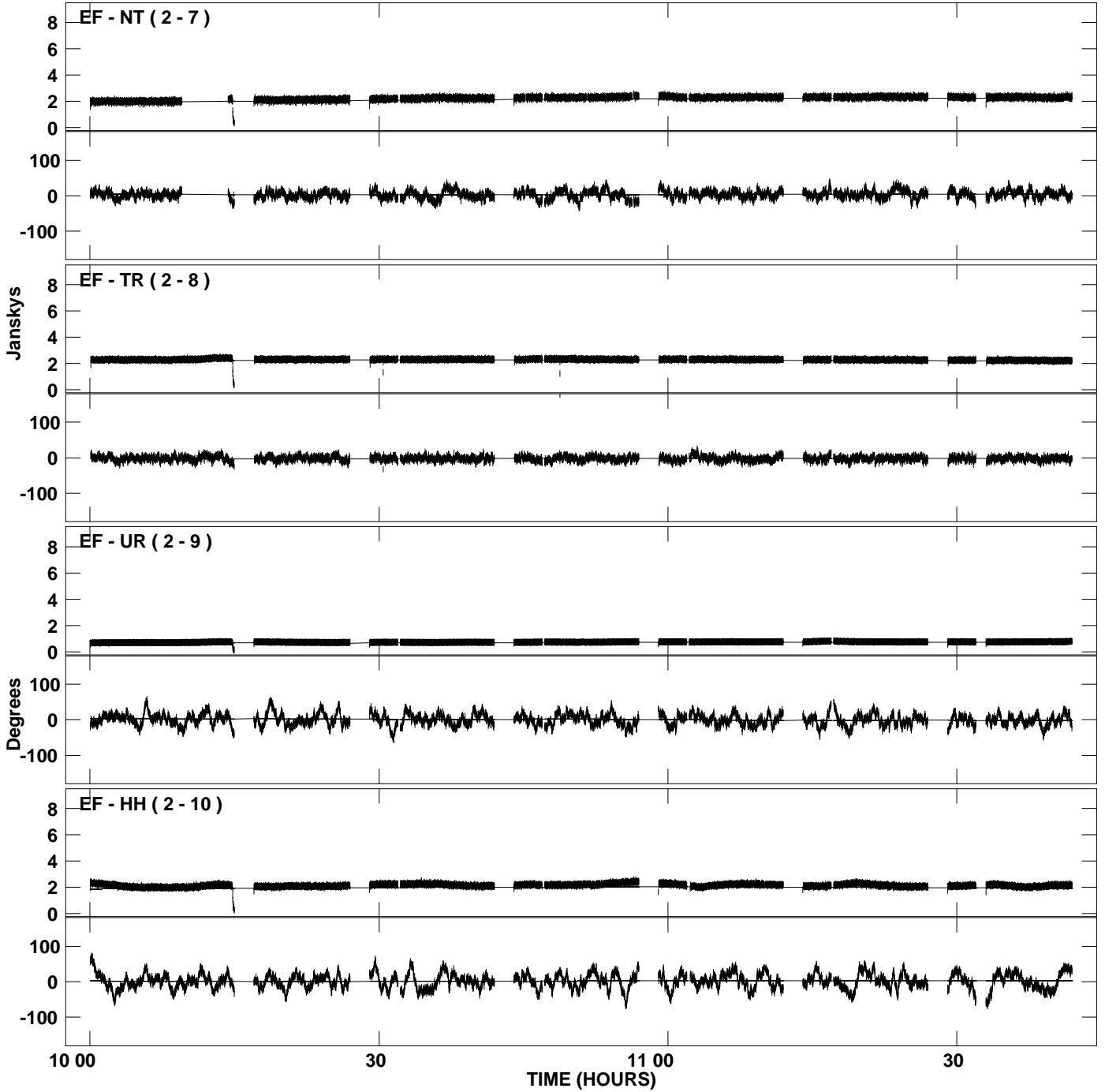
PLot file version 18 created 18-NOV-2008 16:50:29  
Amplitude andPhase vs Time for DA193.MULTI.1 CL # 5  
IF 2 CHAN 1 STK RR of DA193.ICL001.5



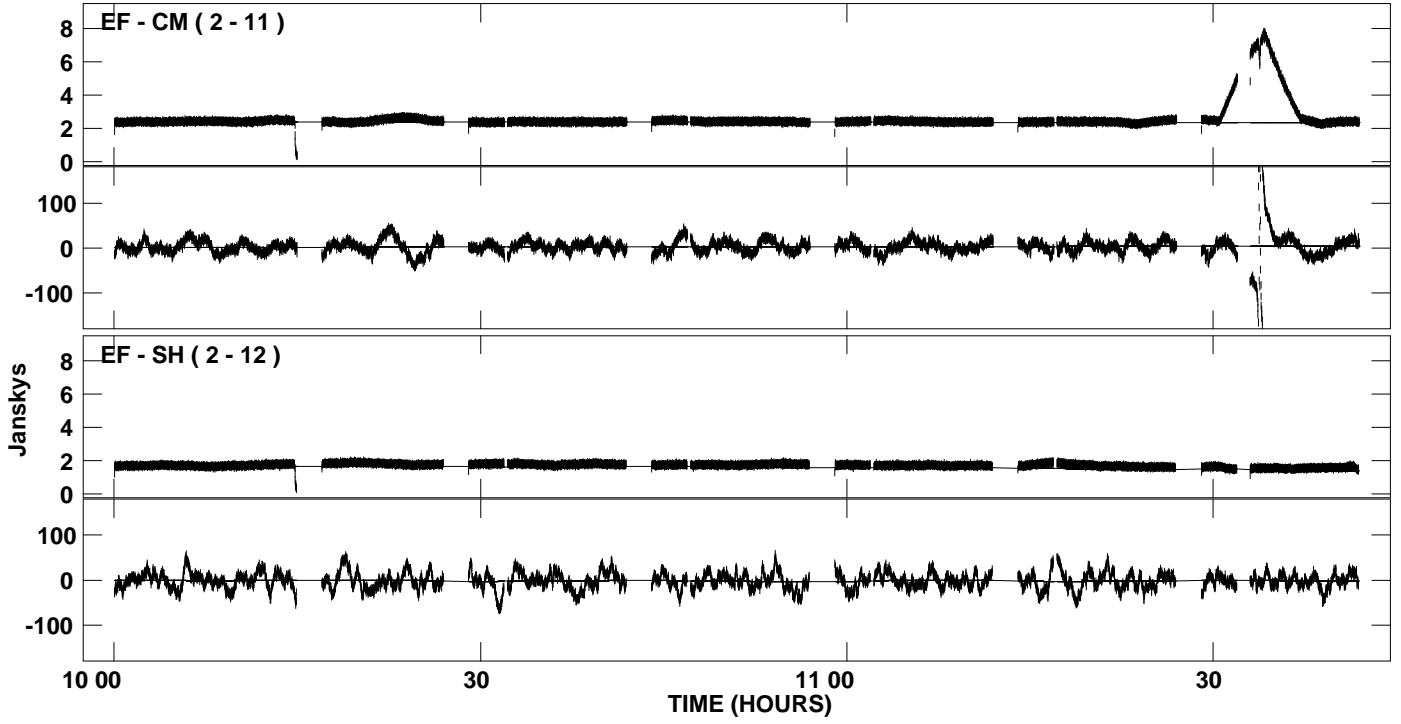
PLot file version 19 created 18-NOV-2008 16:50:30  
Amplitude andPhase vs Time for DA193.MULTI.1 CL # 5  
IF 3 CHAN 1 STK RR of DA193.ICL001.5



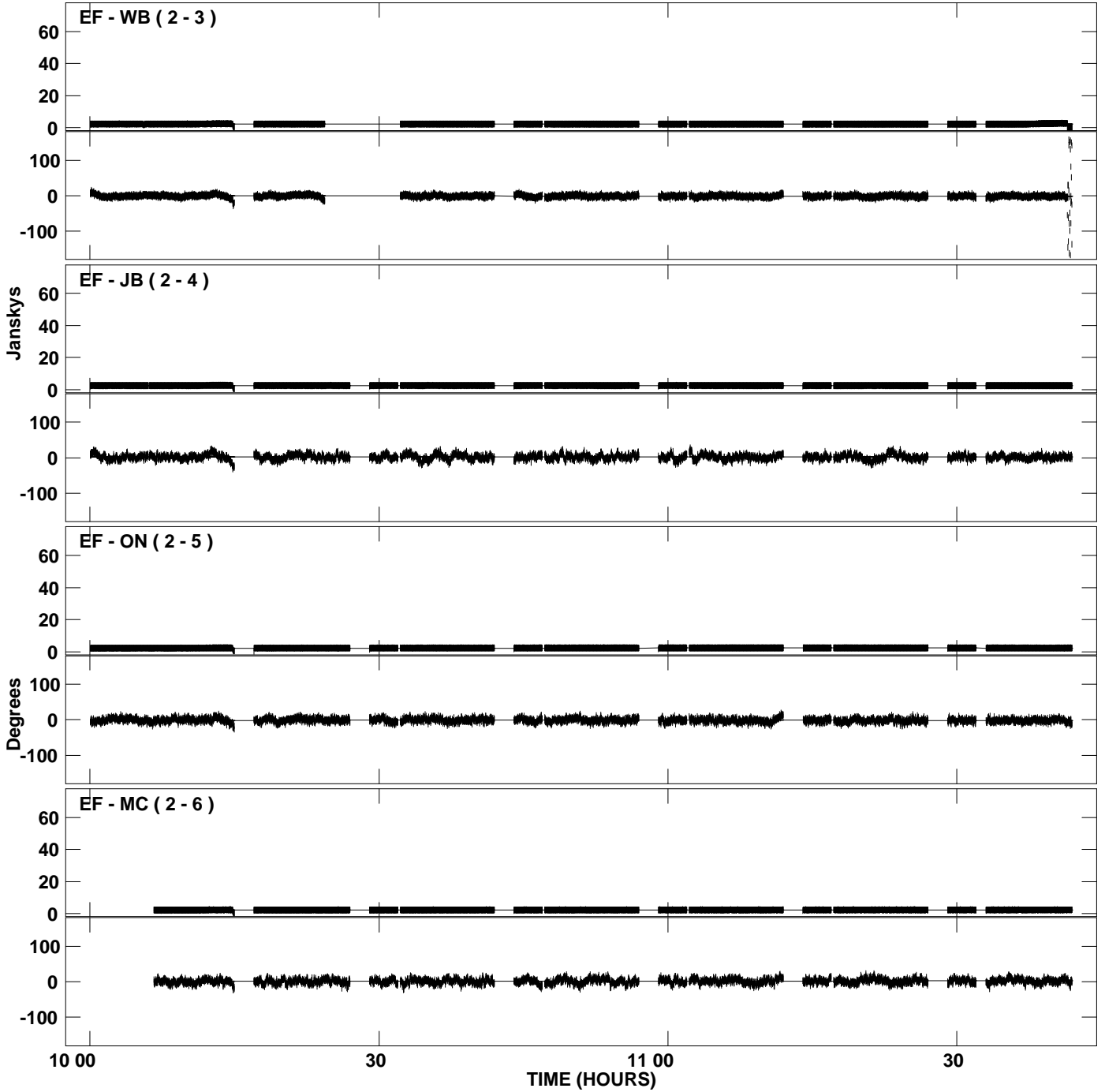
PLot file version 20 created 18-NOV-2008 16:50:30  
Amplitude and Phase vs Time for DA193.MULTI.1 CL # 5  
IF 3 CHAN 1 STK RR of DA193.ICL001.5



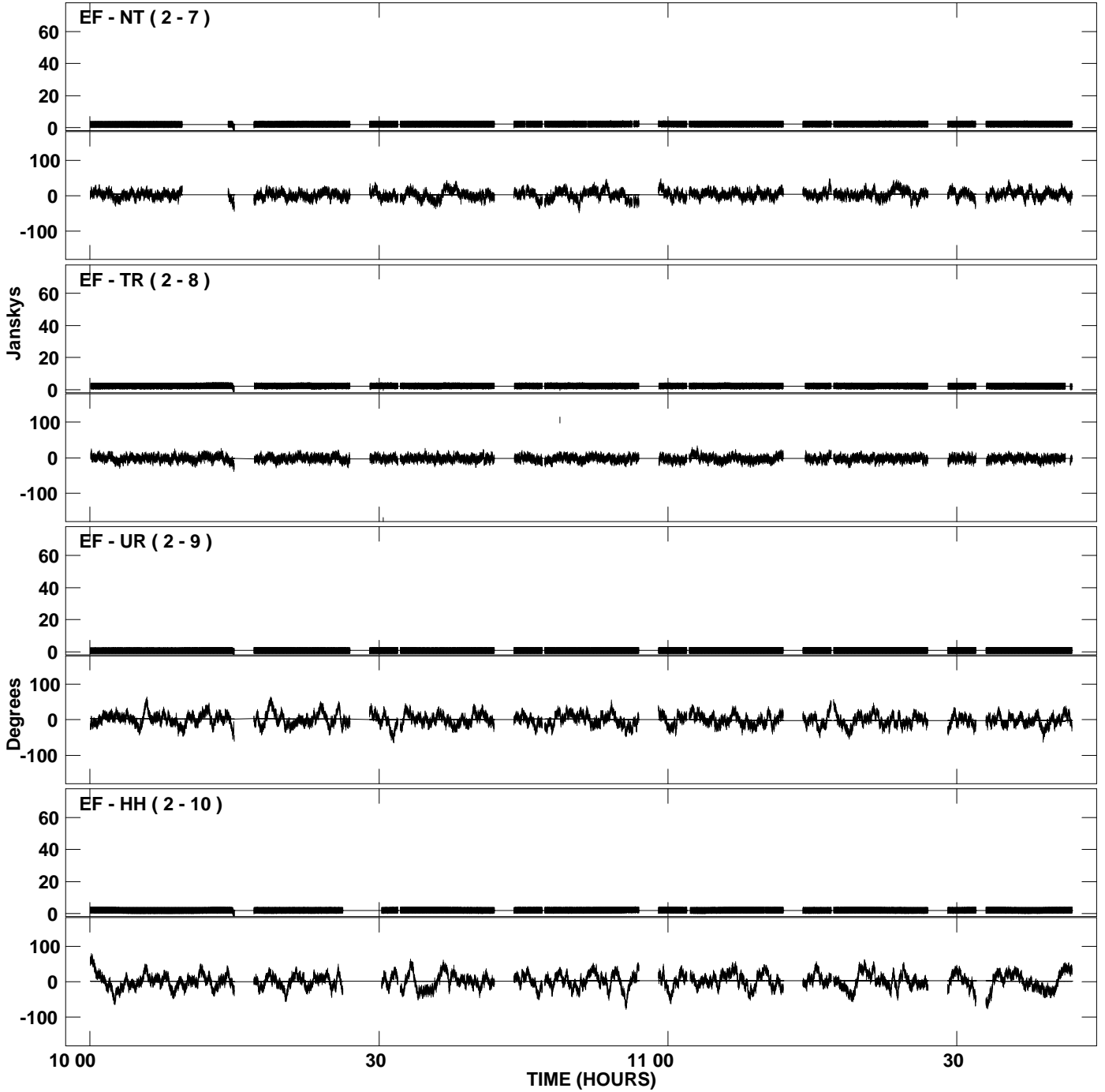
PLot file version 21 created 18-NOV-2008 16:50:30  
Amplitude andPhase vs Time for DA193.MULTI.1 CL # 5  
IF 3 CHAN 1 STK RR of DA193.ICL001.5



PLot file version 22 created 18-NOV-2008 16:50:31  
Amplitude andPhase vs Time for DA193.MULTI.1 CL # 5  
IF 4 CHAN 1 STK RR of DA193.ICL001.5



PLot file version 23 created 18-NOV-2008 16:50:31  
Amplitude andPhase vs Time for DA193.MULTI.1 CL # 5  
IF 4 CHAN 1 STK RR of DA193.ICL001.5



PLot file version 24 created 18-NOV-2008 16:50:31  
Amplitude andPhase vs Time for DA193.MULTI.1 CL # 5  
IF 4 CHAN 1 STK RR of DA193.ICL001.5

