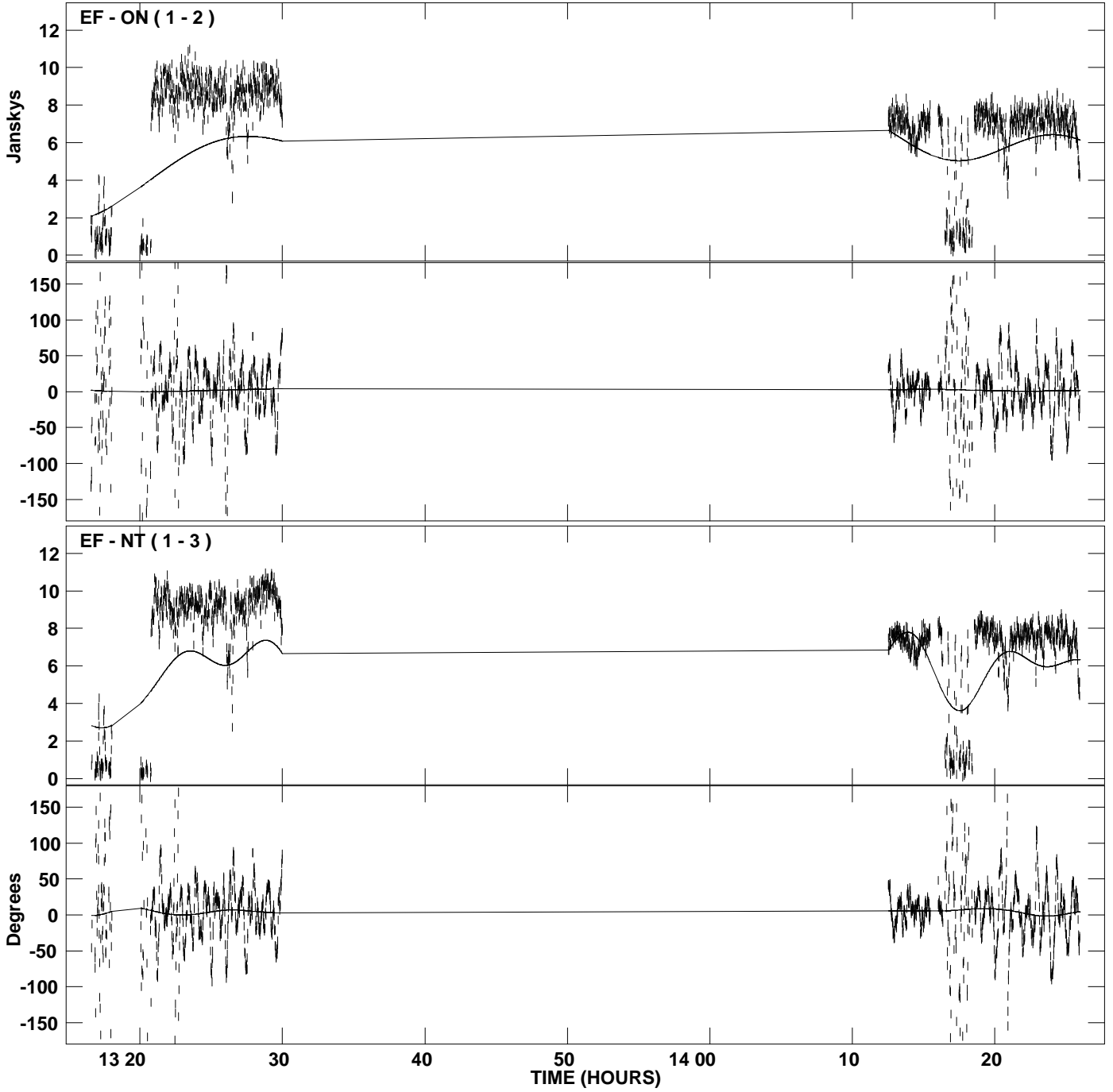
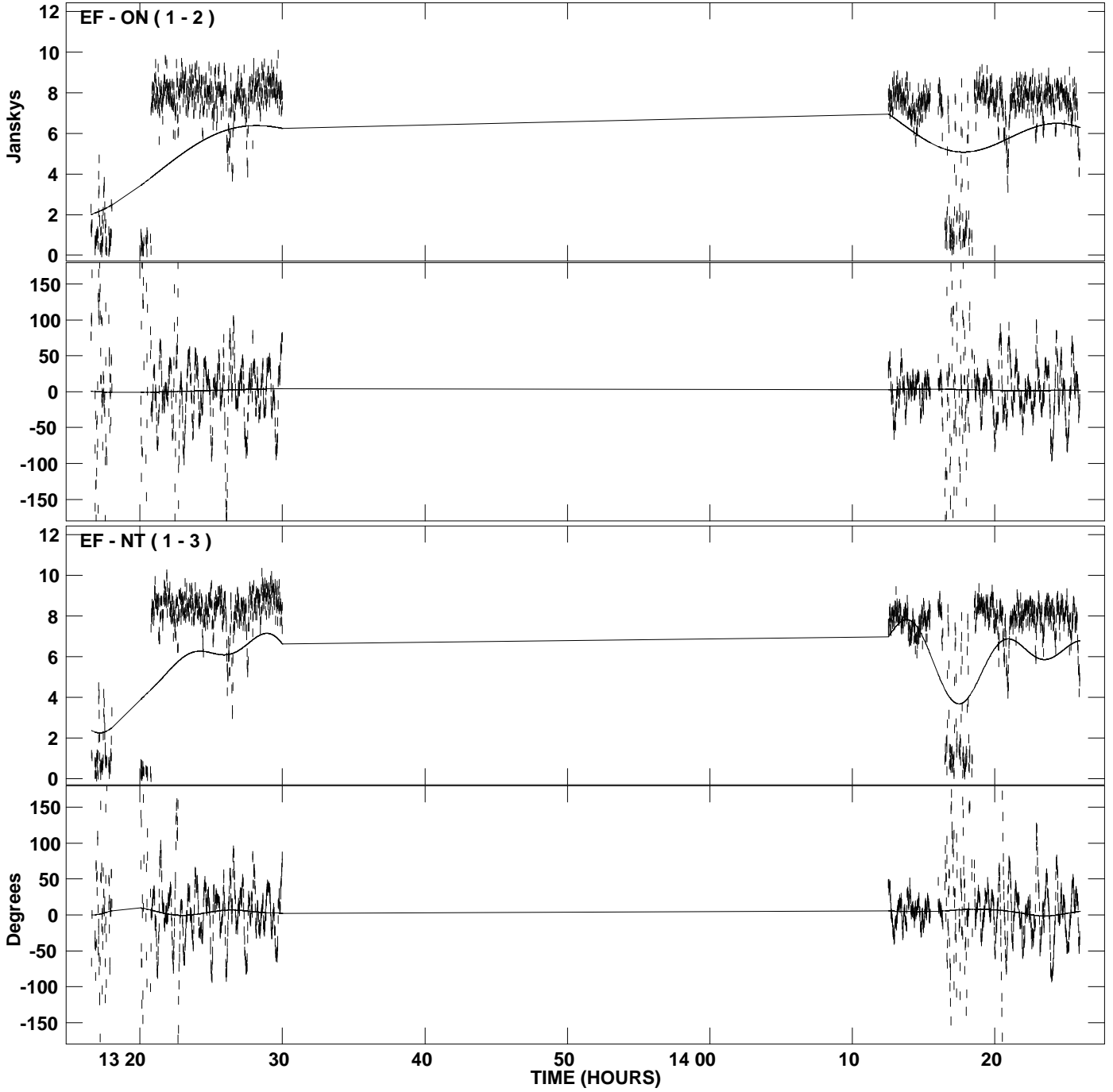


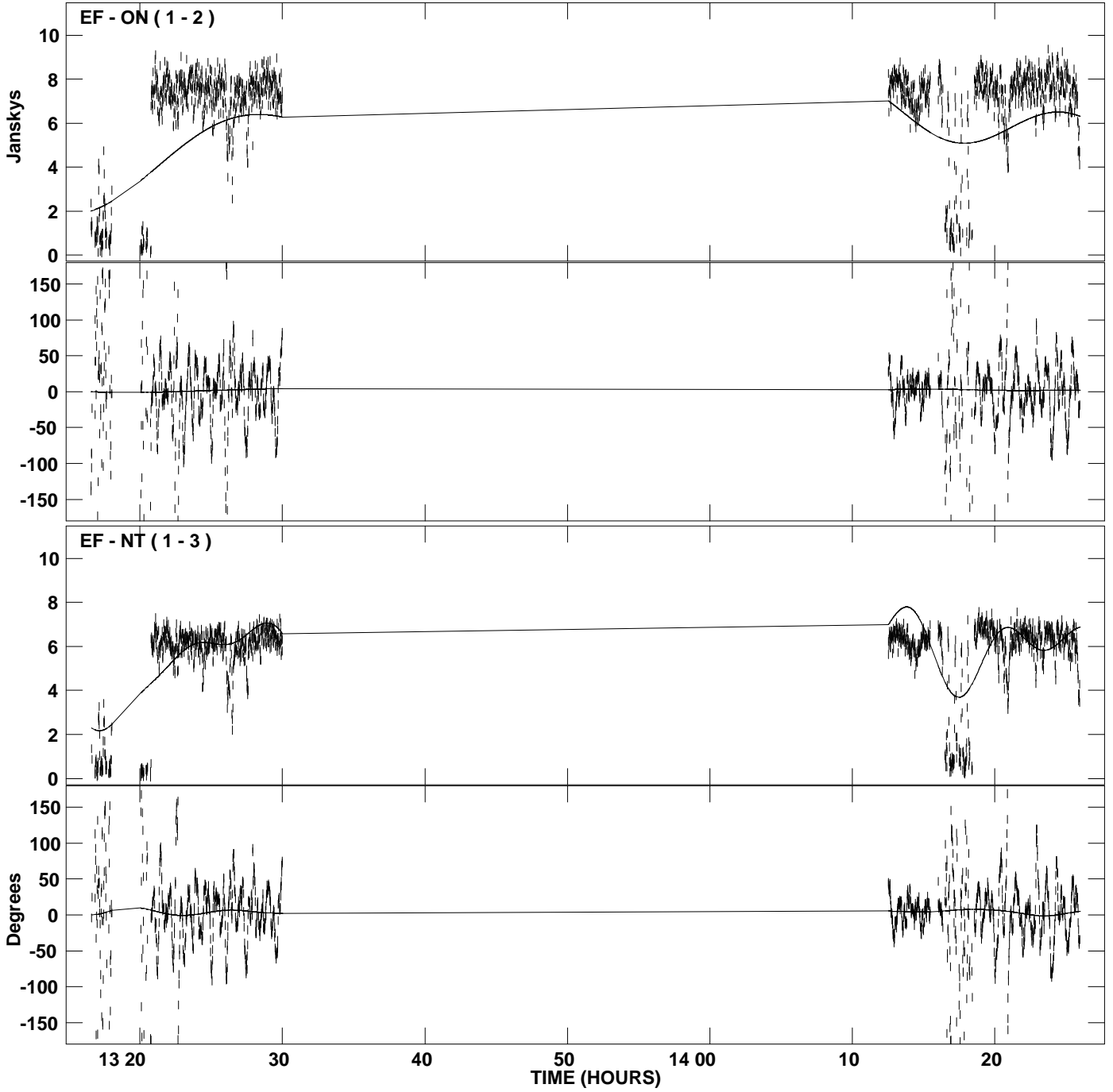
PLot file version 1 created 24-MAR-2009 12:56:23  
Amplitude and Phase vs Time for 1749+096.MULTI.1 CL # 2  
IF 1 CHAN 1 STK LL of 1749+096.ICL001.2



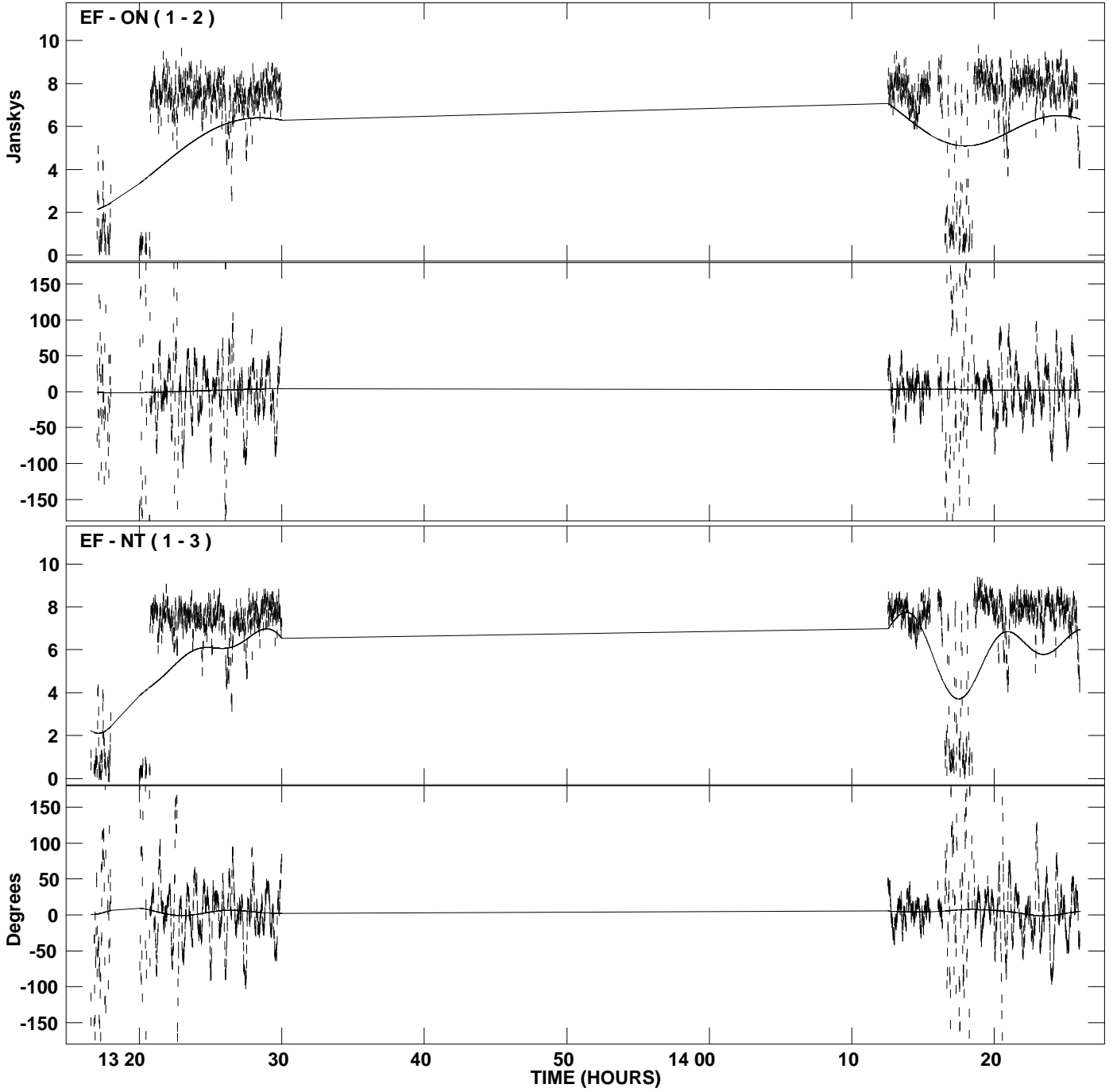
PLot file version 2 created 24-MAR-2009 12:56:23  
Amplitude and Phase vs Time for 1749+096.MULTI.1 CL # 2  
IF 2 CHAN 1 STK LL of 1749+096.ICL001.2



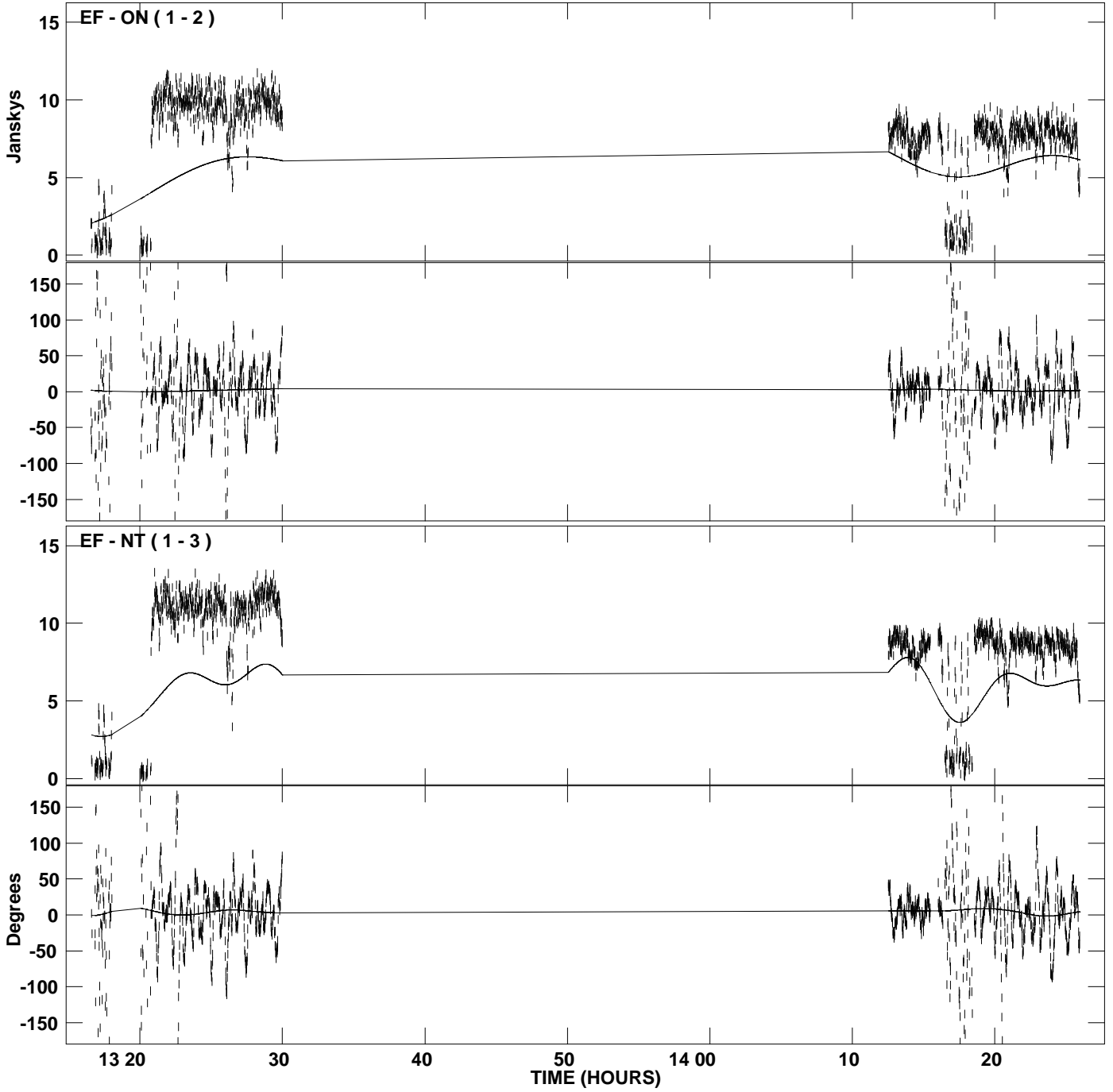
PLot file version 3 created 24-MAR-2009 12:56:23  
Amplitude and Phase vs Time for 1749+096.MULTI.1 CL # 2  
IF 3 CHAN 1 STK LL of 1749+096.ICL001.2



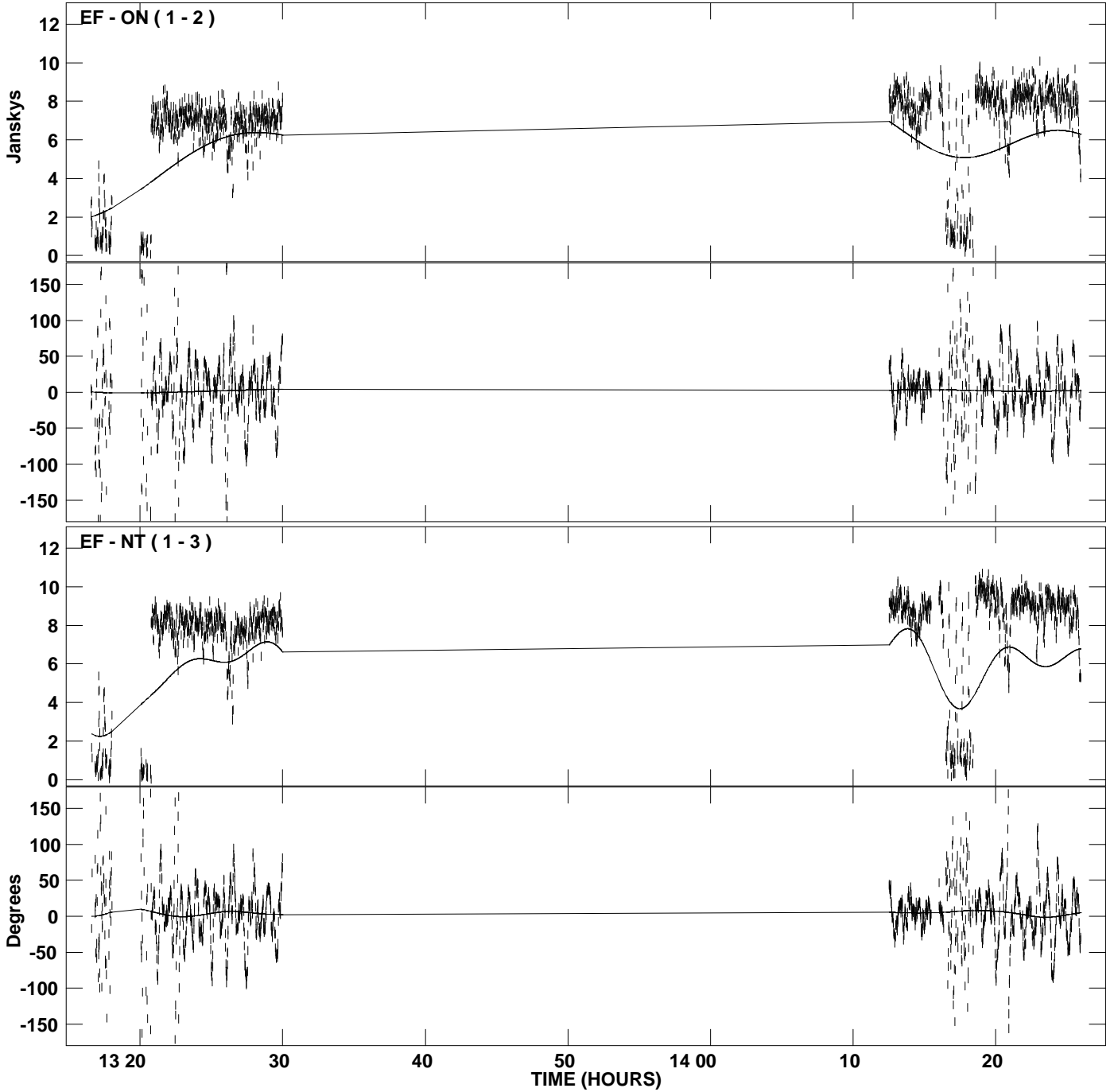
PLot file version 4 created 24-MAR-2009 12:56:24  
Amplitude and Phase vs Time for 1749+096.MULTI.1 CL # 2  
IF 4 CHAN 1 STK LL of 1749+096.ICL001.2



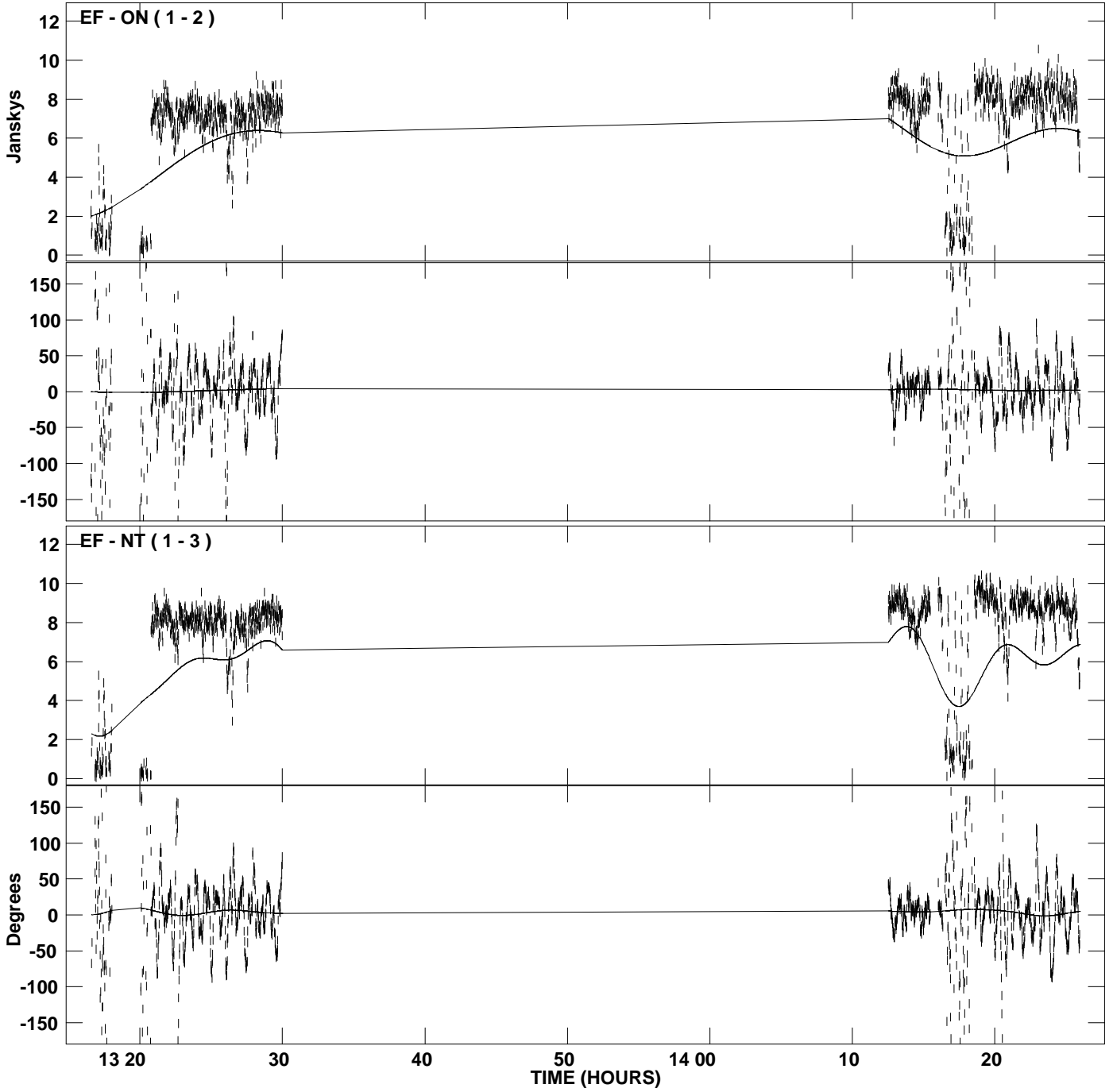
PLot file version 5 created 24-MAR-2009 12:56:24  
Amplitude and Phase vs Time for 1749+096.MULTI.1 CL # 2  
IF 1 CHAN 1 STK RR of 1749+096.ICL001.2



PLot file version 6 created 24-MAR-2009 12:56:24  
Amplitude and Phase vs Time for 1749+096.MULTI.1 CL # 2  
IF 2 CHAN 1 STK RR of 1749+096.ICL001.2



PLot file version 7 created 24-MAR-2009 12:56:24  
Amplitude and Phase vs Time for 1749+096.MULTI.1 CL # 2  
IF 3 CHAN 1 STK RR of 1749+096.ICL001.2



PLot file version 8 created 24-MAR-2009 12:56:24  
Amplitude and Phase vs Time for 1749+096.MULTI.1 CL # 2  
IF 4 CHAN 1 STK RR of 1749+096.ICL001.2

