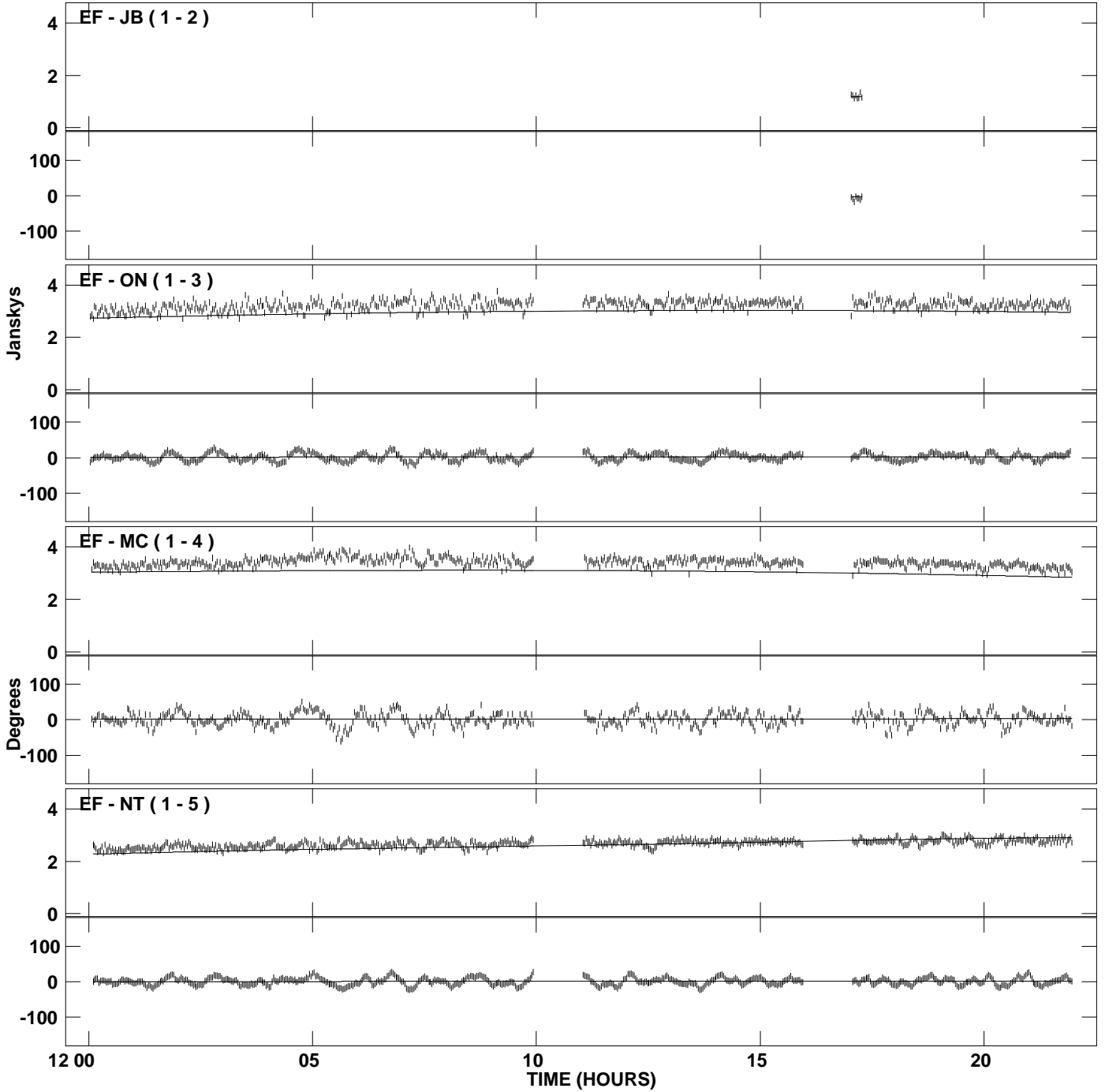
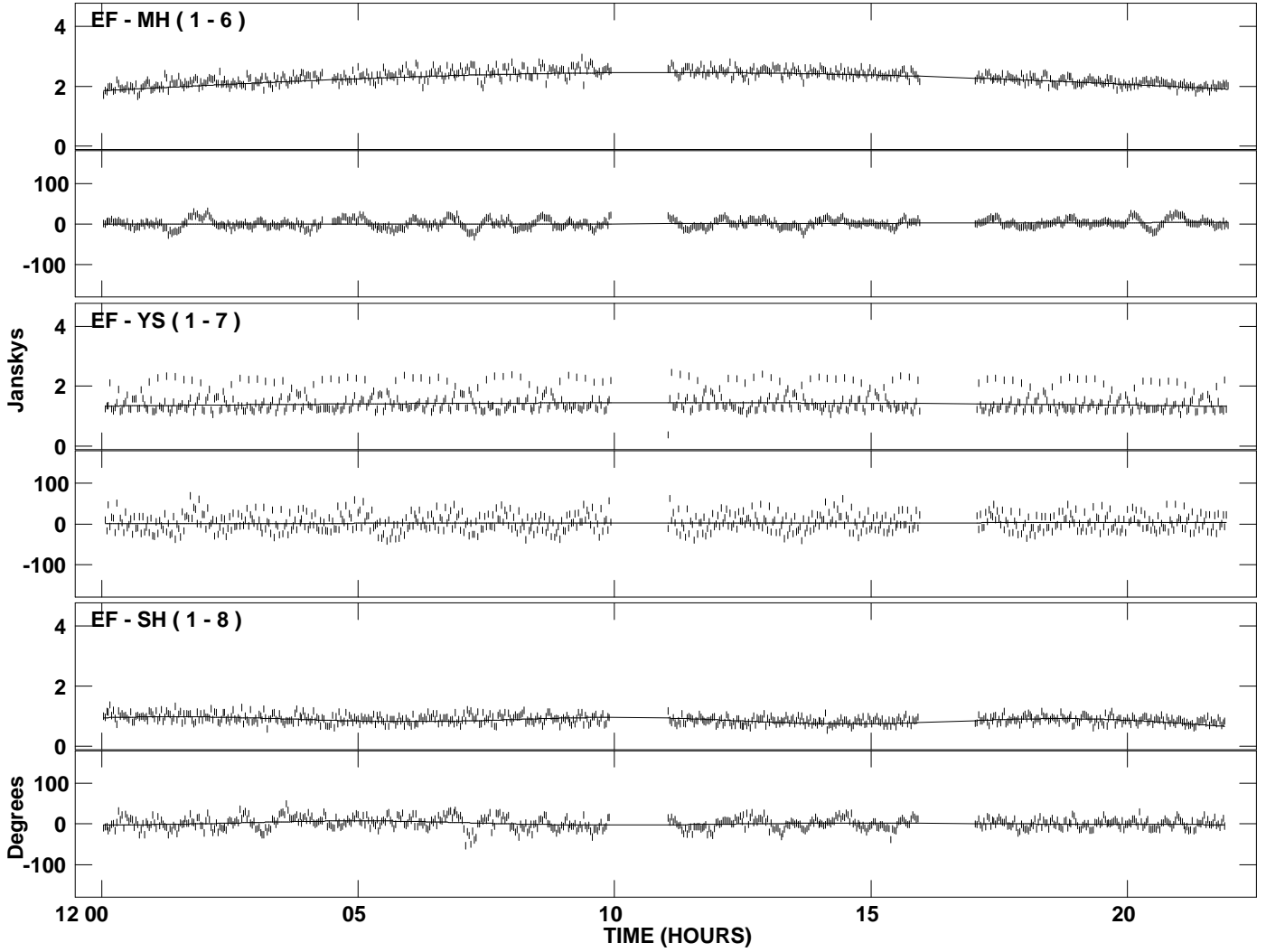


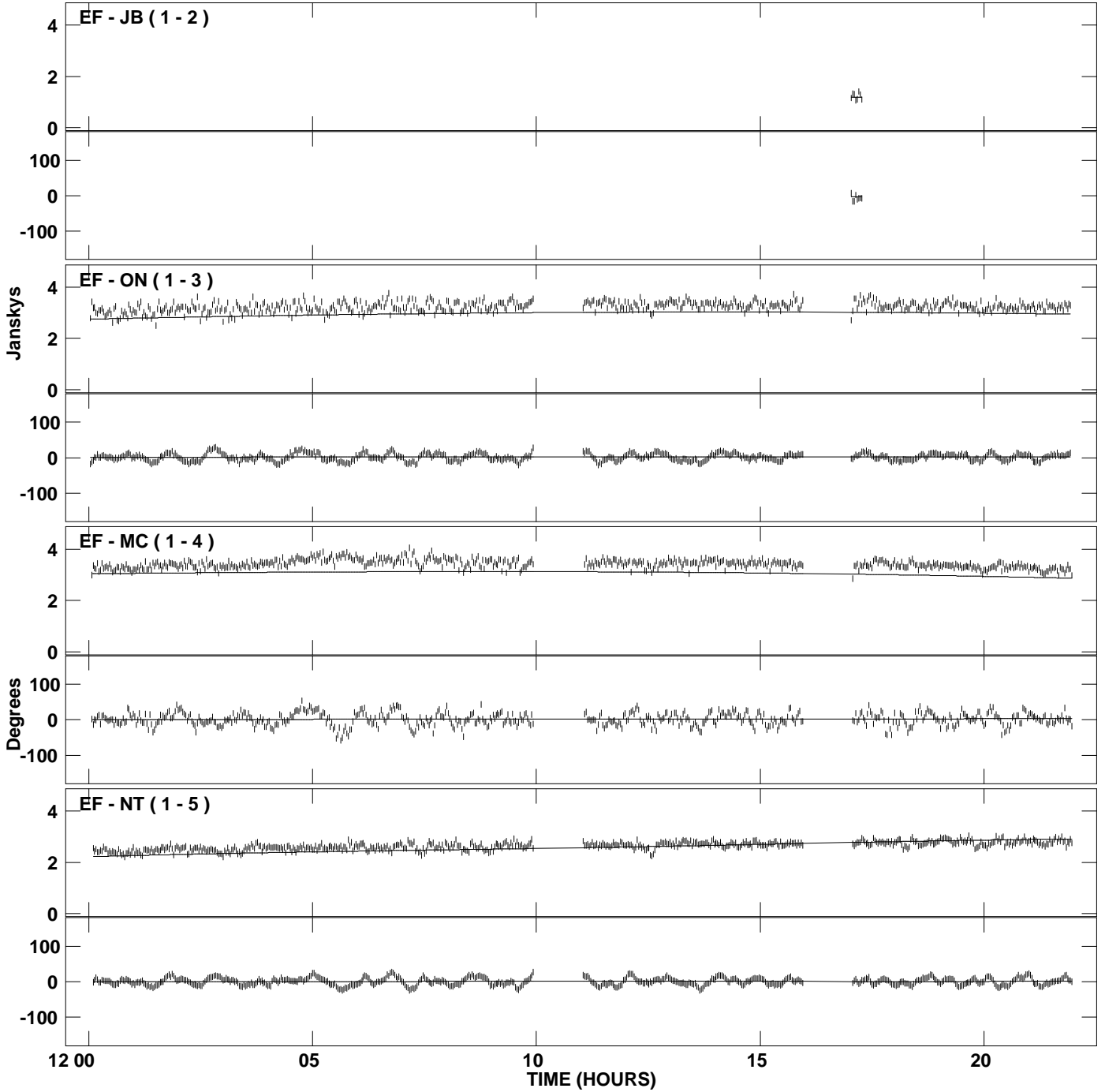
PLot file version 1 created 28-APR-2009 19:47:03  
Amplitude and Phase vs Time for 0202+319.MULTI.1 CL # 3  
IF 1 CHAN 1 STK LL of 0202+319.ICL001.3



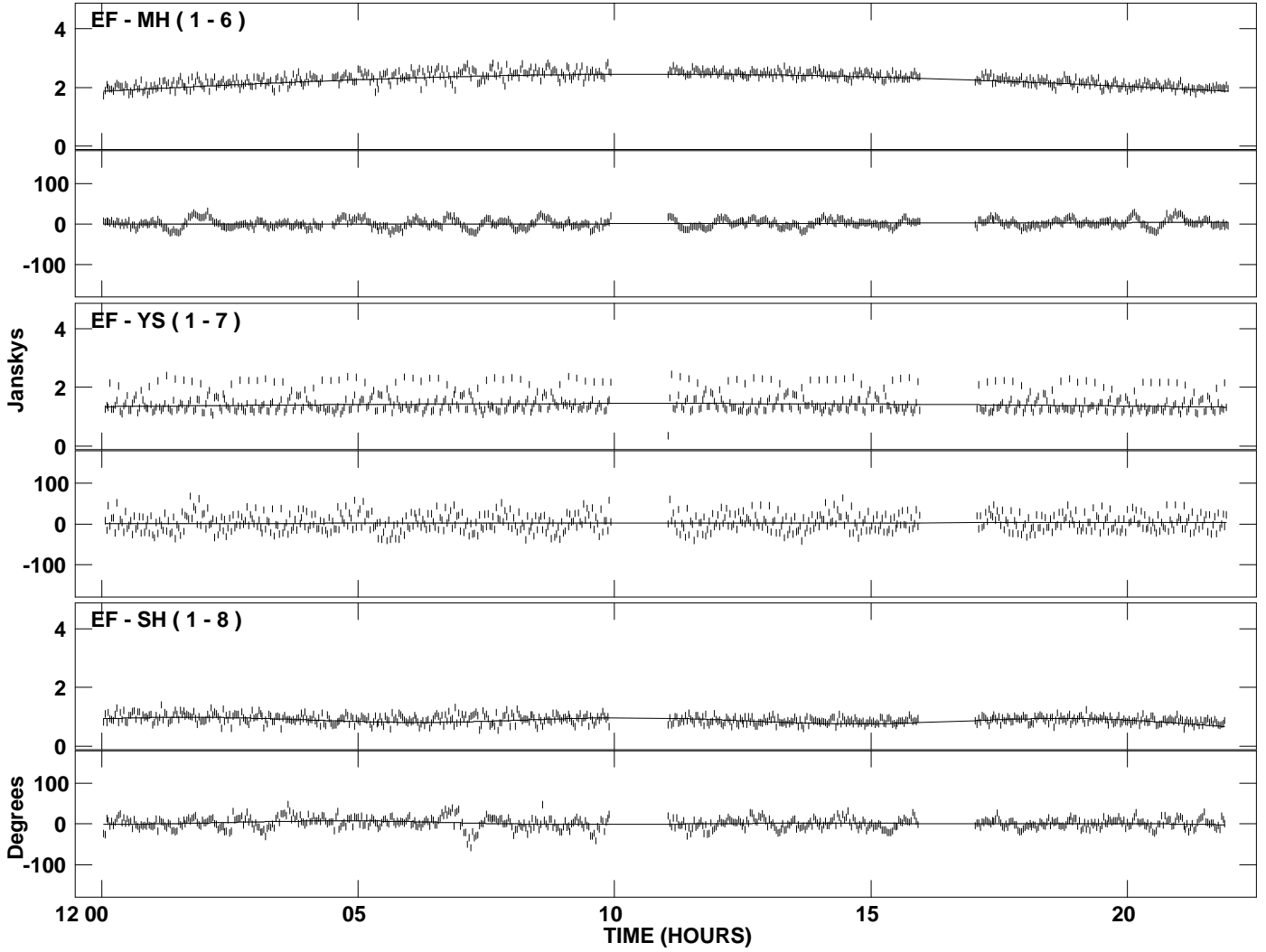
PLot file version 2 created 28-APR-2009 19:47:03  
Amplitude and Phase vs Time for 0202+319.MULTI.1 CL # 3  
IF 1 CHAN 1 STK LL of 0202+319.ICL001.3



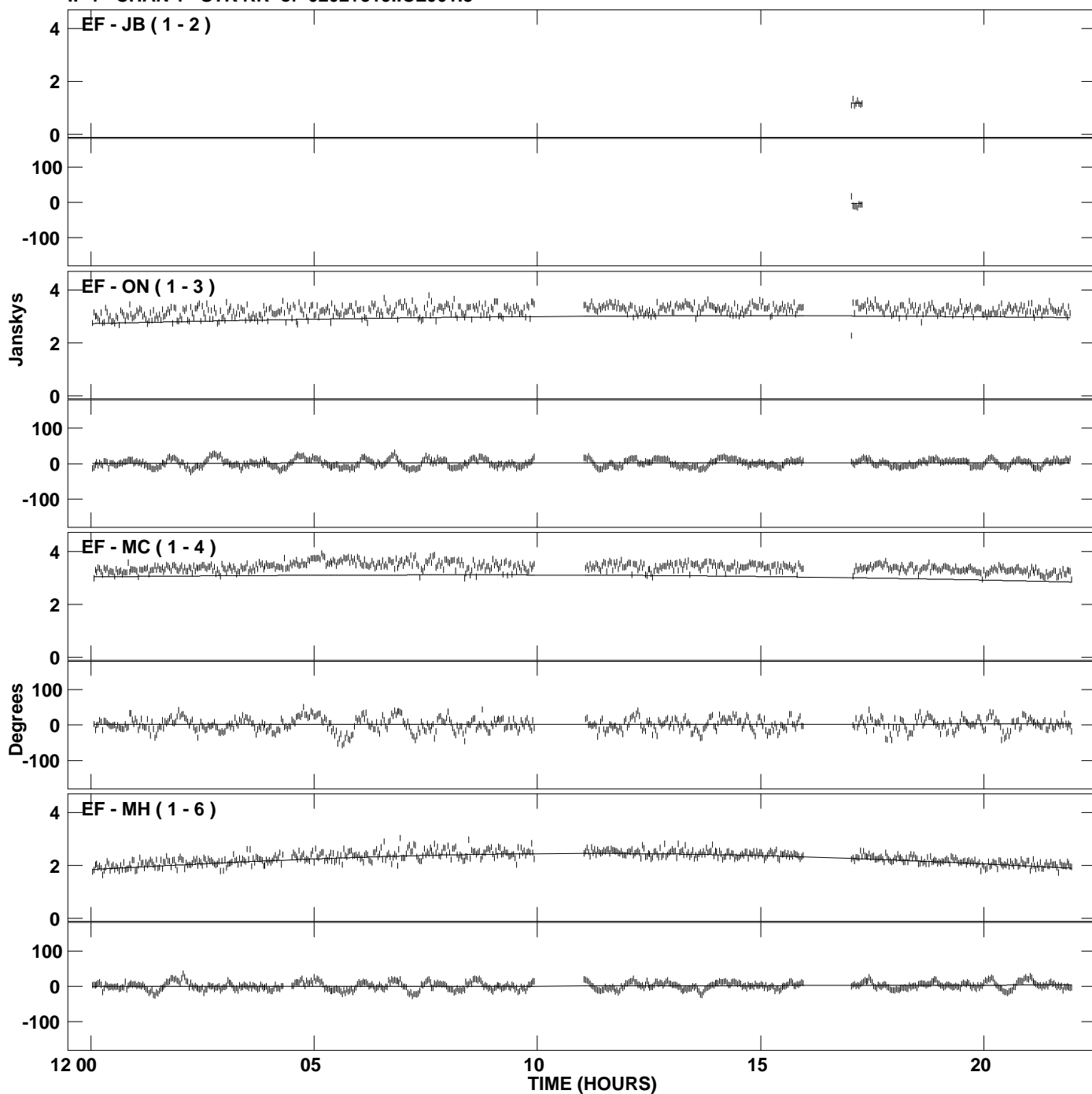
PLot file version 3 created 28-APR-2009 19:47:03  
Amplitude andPhase vs Time for 0202+319.MULTI.1 CL # 3  
IF 2 CHAN 1 STK LL of 0202+319.ICL001.3



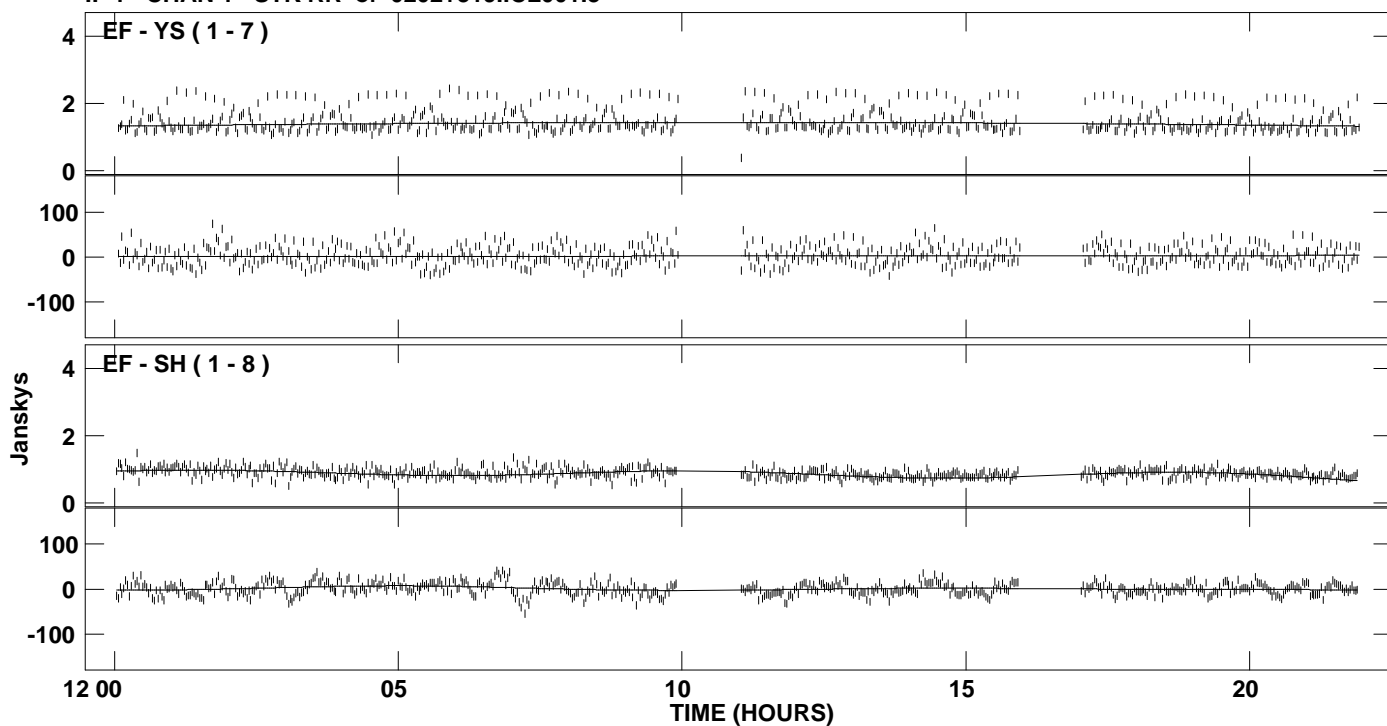
PLot file version 4 created 28-APR-2009 19:47:03  
Amplitude and Phase vs Time for 0202+319.MULTI.1 CL # 3  
IF 2 CHAN 1 STK LL of 0202+319.ICL001.3



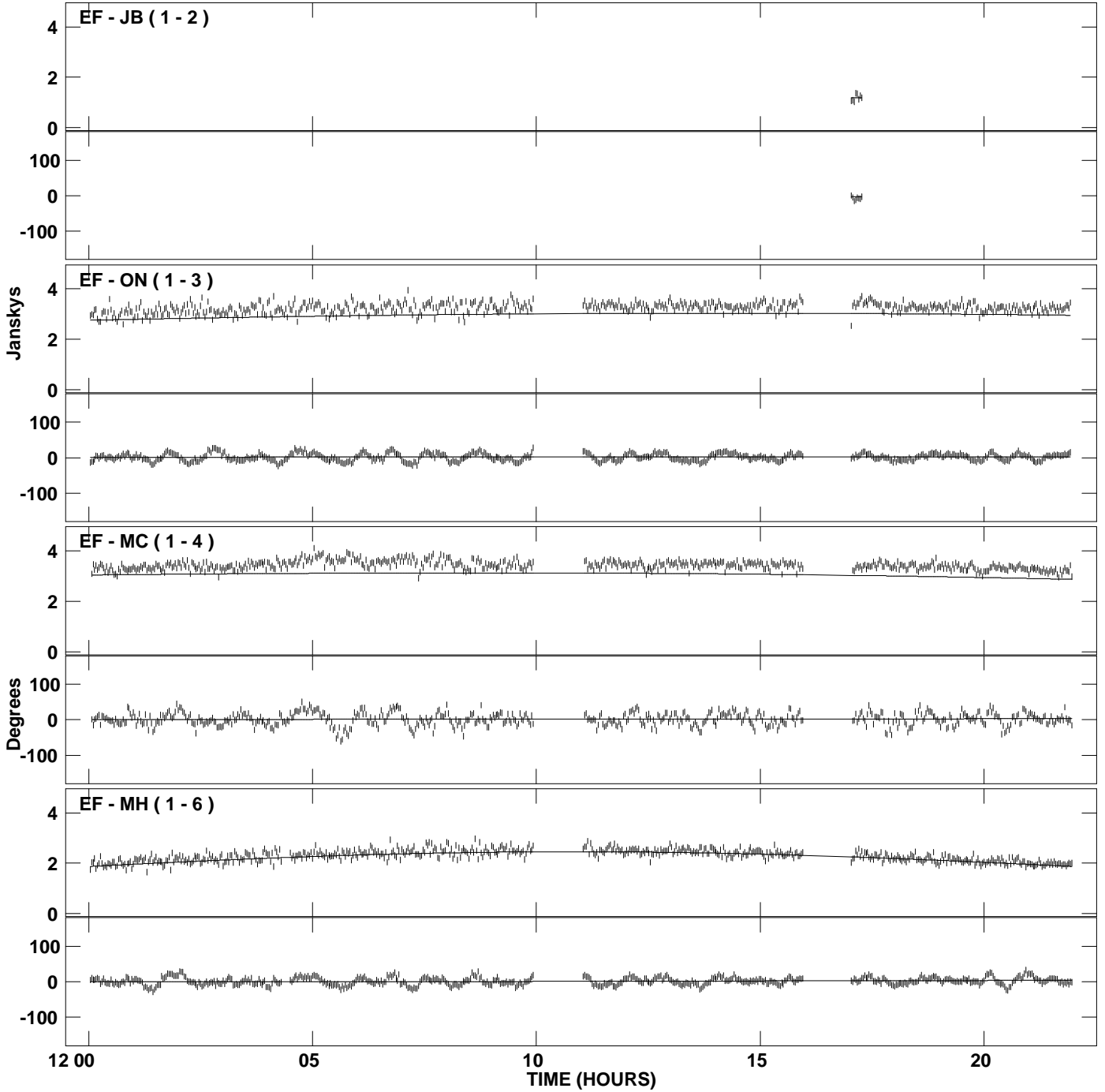
PLot file version 5 created 28-APR-2009 19:47:03  
Amplitude andPhase vs Time for 0202+319.MULTI.1 CL # 3  
IF 1 CHAN 1 STK RR of 0202+319.ICL001.3



PLot file version 6 created 28-APR-2009 19:47:03  
Amplitude and Phase vs Time for 0202+319.MULTI.1 CL # 3  
IF 1 CHAN 1 STK RR of 0202+319.ICL001.3



PLot file version 7 created 28-APR-2009 19:47:04  
Amplitude andPhase vs Time for 0202+319.MULTI.1 CL # 3  
IF 2 CHAN 1 STK RR of 0202+319.ICL001.3



PLot file version 8 created 28-APR-2009 19:47:04  
Amplitude and Phase vs Time for 0202+319.MULTI.1 CL # 3  
IF 2 CHAN 1 STK RR of 0202+319.ICL001.3

