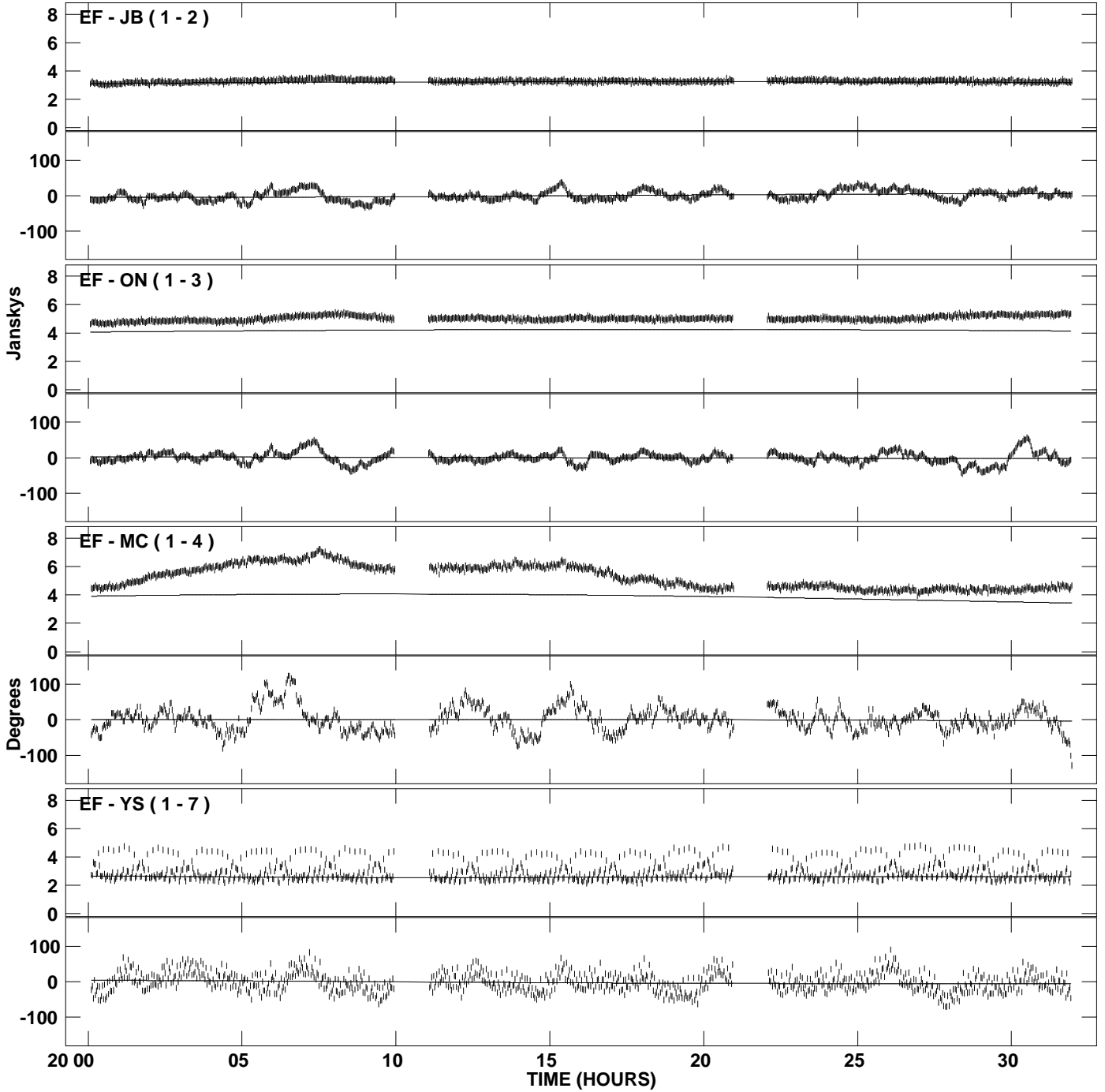
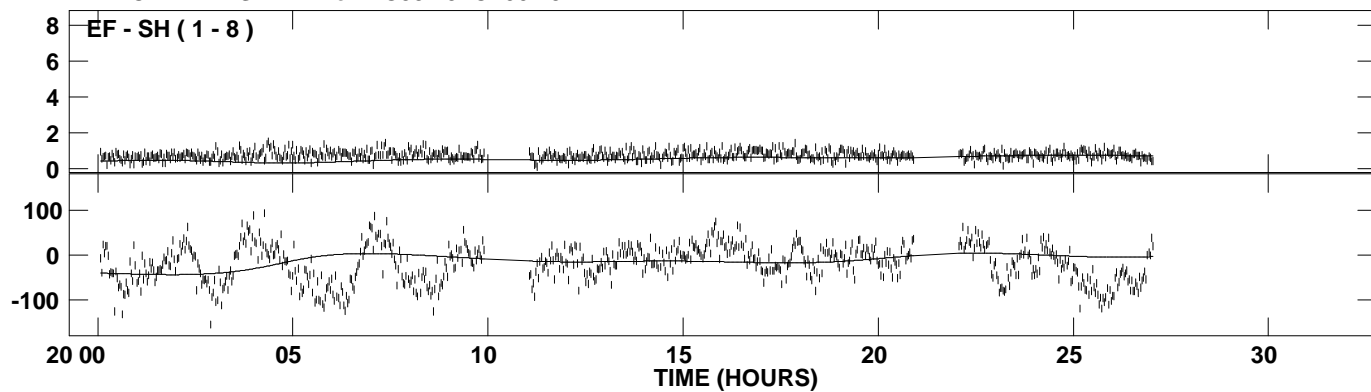


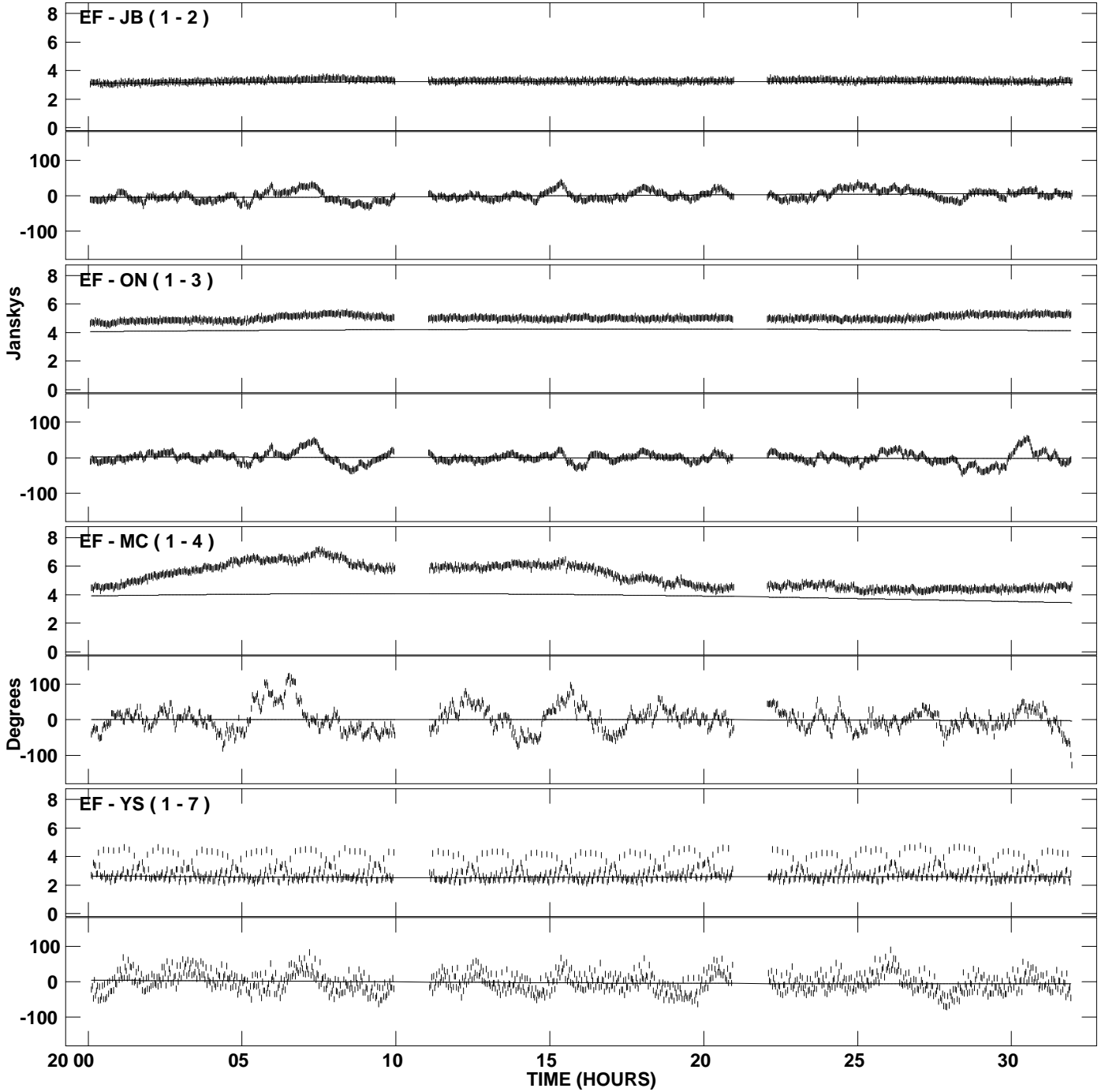
PLot file version 1 created 06-JUL-2009 18:56:22
Amplitude and Phase vs Time for 4C39.25.MULTI.1 CL # 3
IF 1 CHAN 1 STK LL of 4C39.25.ICL001.3



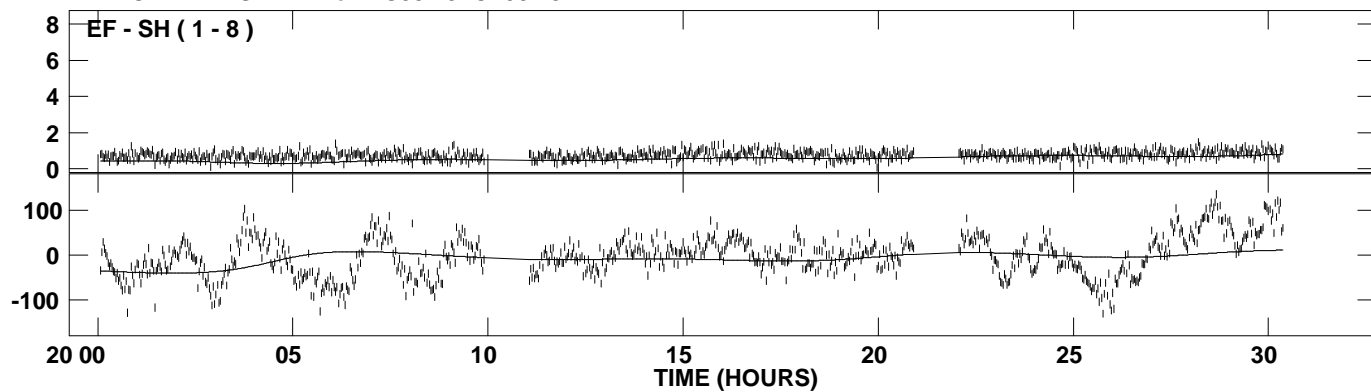
PLot file version 2 created 06-JUL-2009 18:56:22
Amplitude andPhase vs Time for 4C39.25.MULTI.1 CL # 3
IF 1 CHAN 1 STK LL of 4C39.25.ICL001.3



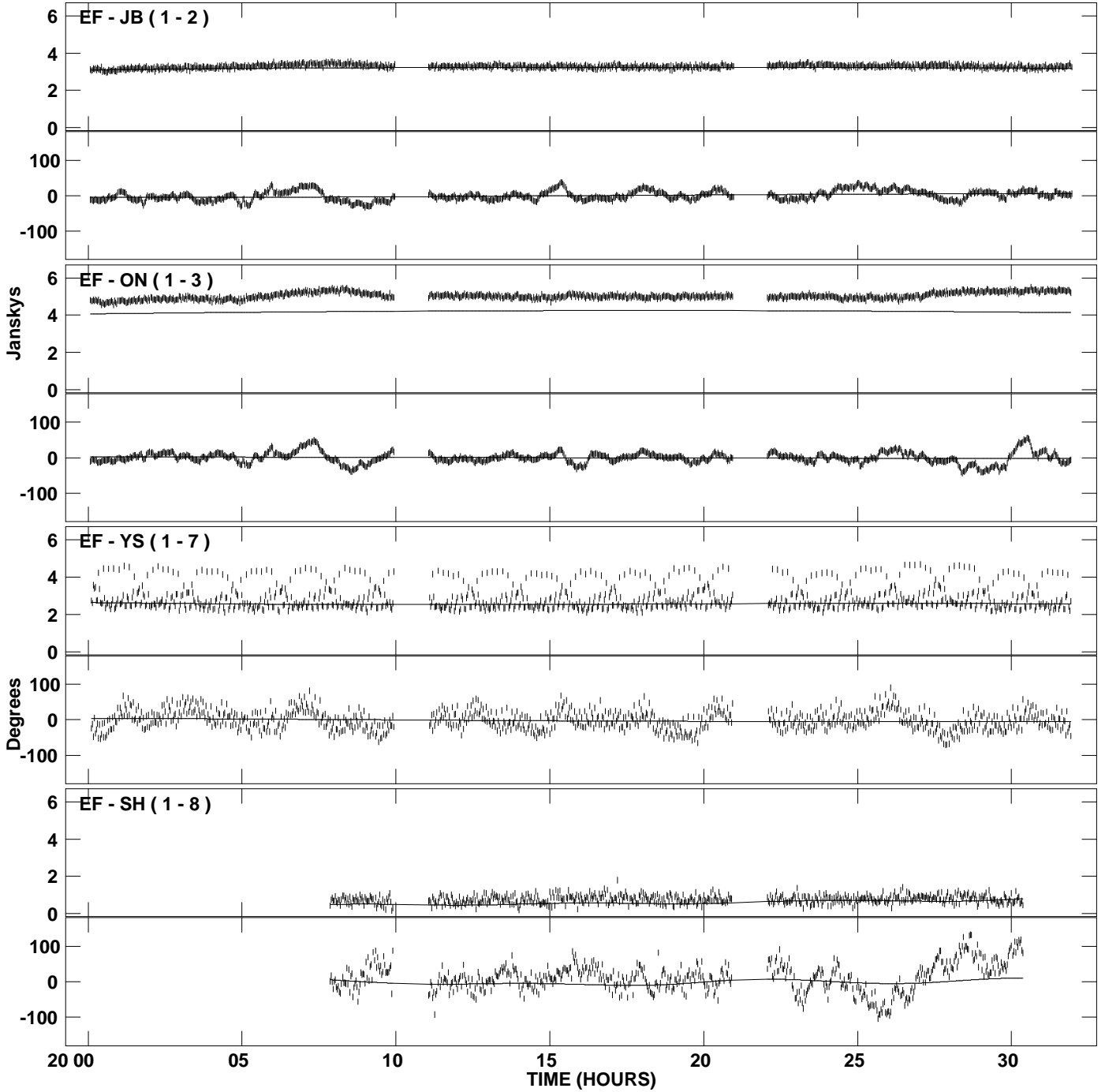
PLot file version 3 created 06-JUL-2009 18:56:22
Amplitude and Phase vs Time for 4C39.25.MULTI.1 CL # 3
IF 2 CHAN 1 STK LL of 4C39.25.ICL001.3



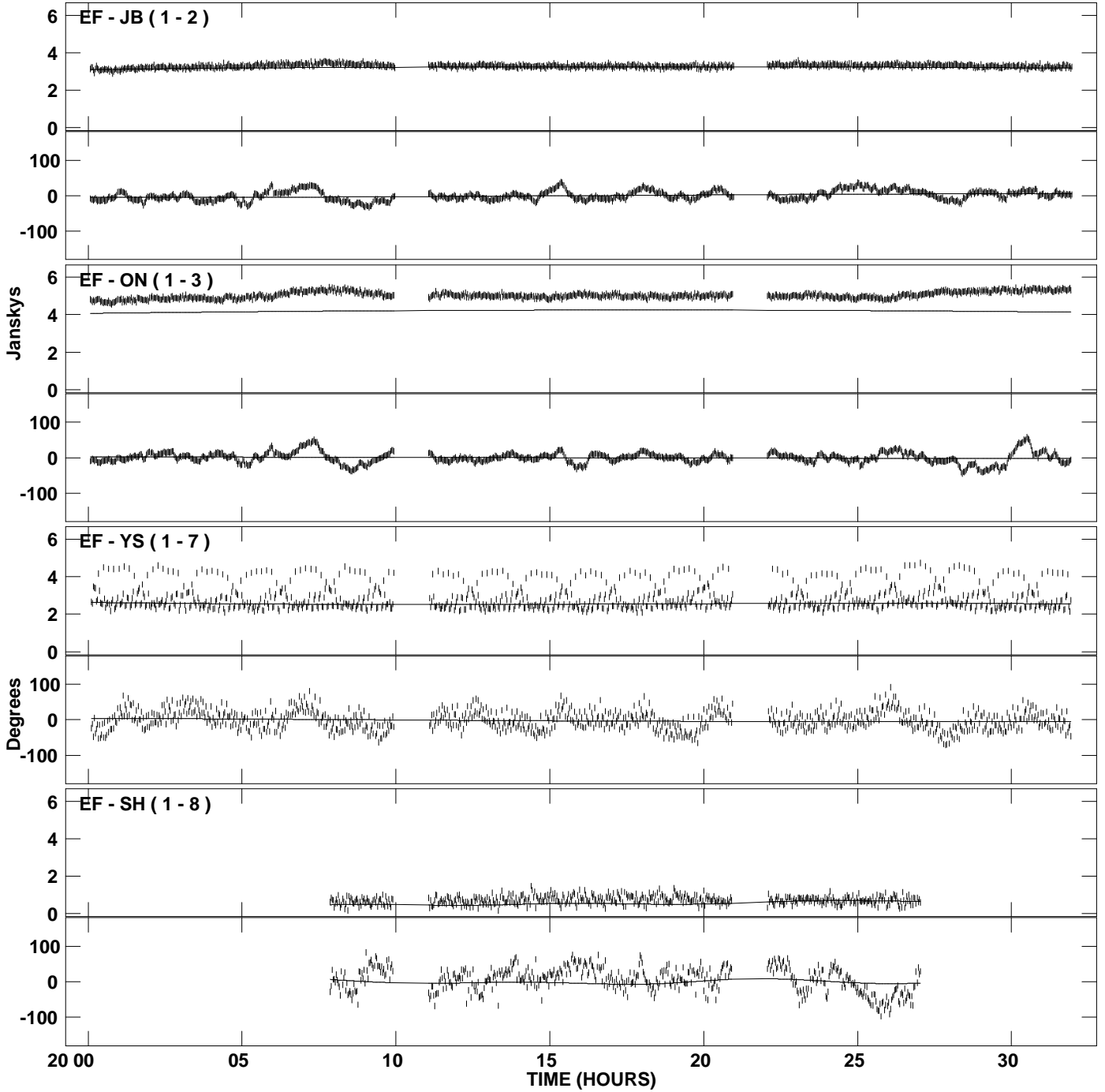
PLot file version 4 created 06-JUL-2009 18:56:22
Amplitude andPhase vs Time for 4C39.25.MULTI.1 CL # 3
IF 2 CHAN 1 STK LL of 4C39.25.ICL001.3



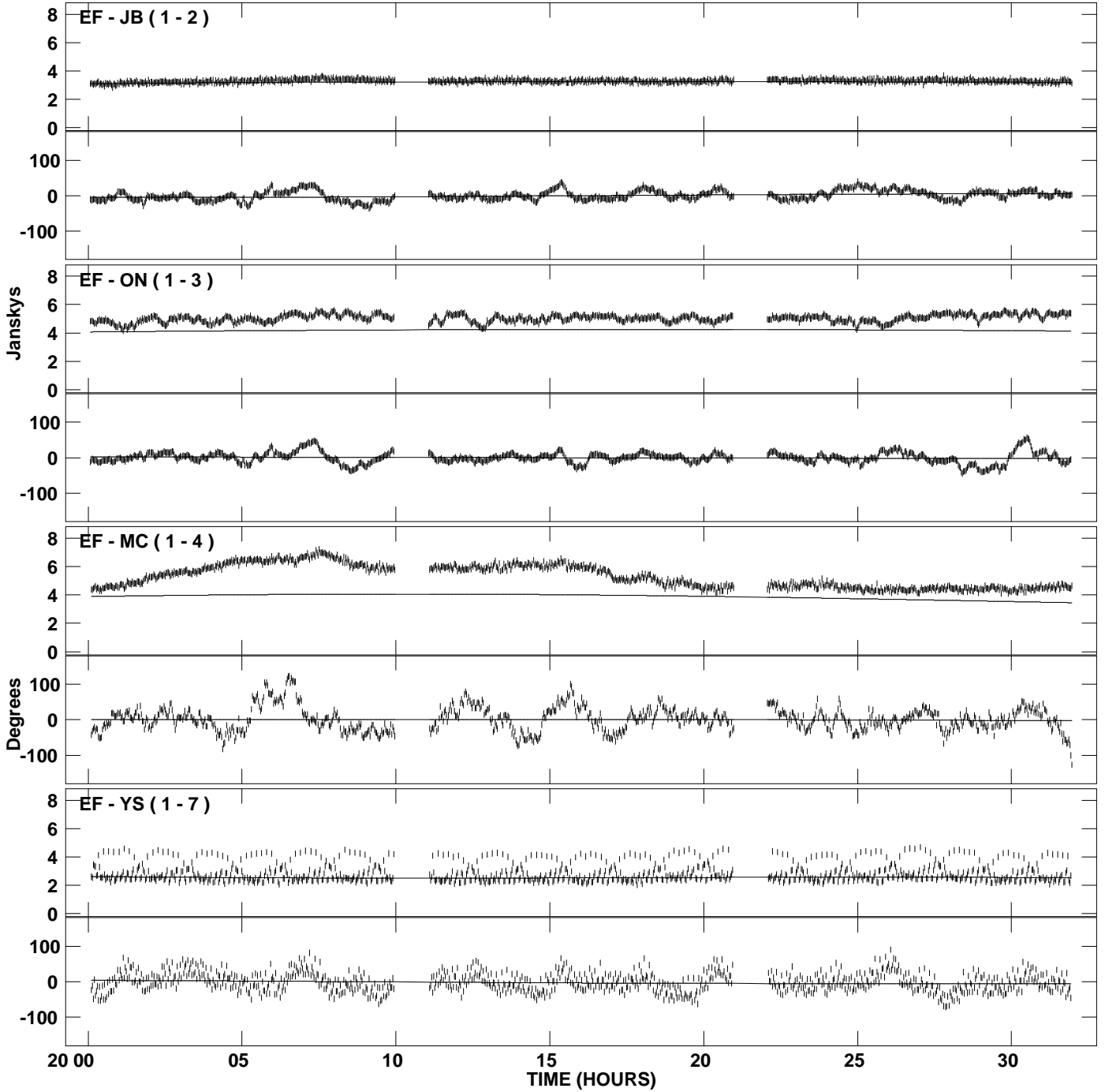
PLot file version 5 created 06-JUL-2009 18:56:22
Amplitude and Phase vs Time for 4C39.25.MULTI.1 CL # 3
IF 3 CHAN 1 STK LL of 4C39.25.ICL001.3



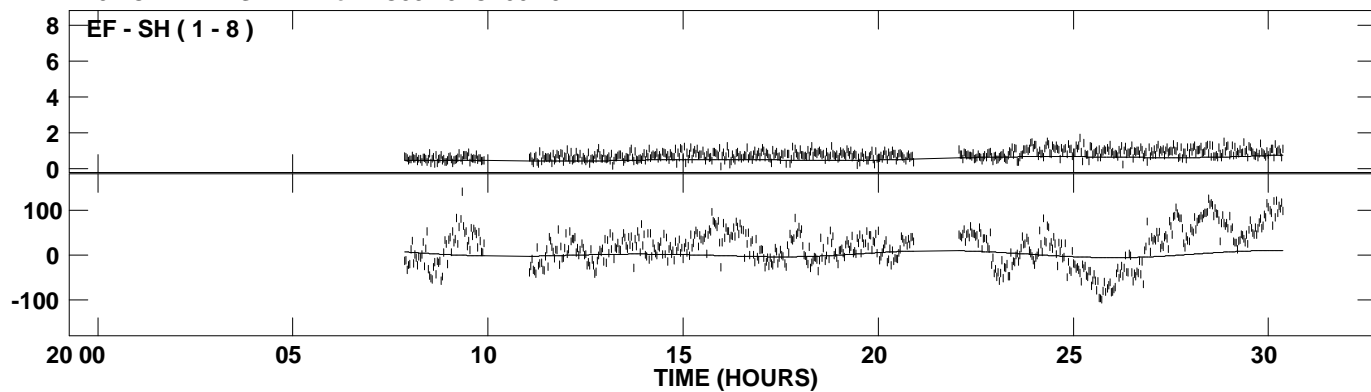
PLot file version 6 created 06-JUL-2009 18:56:23
Amplitude and Phase vs Time for 4C39.25.MULTI.1 CL # 3
IF 4 CHAN 1 STK LL of 4C39.25.ICL001.3



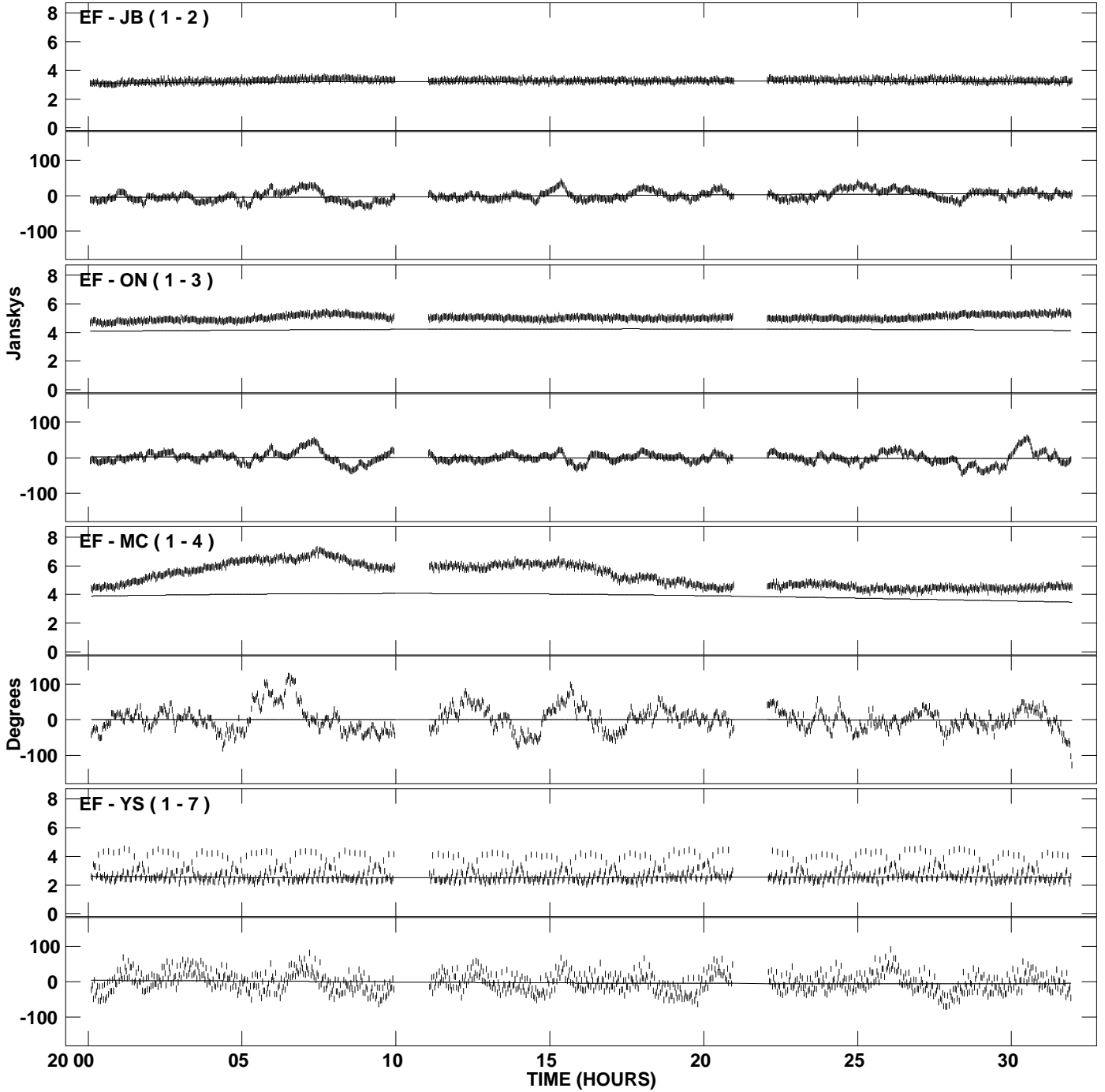
PLot file version 7 created 06-JUL-2009 18:56:23
Amplitude and Phase vs Time for 4C39.25.MULTI.1 CL # 3
IF 5 CHAN 1 STK LL of 4C39.25.ICL001.3



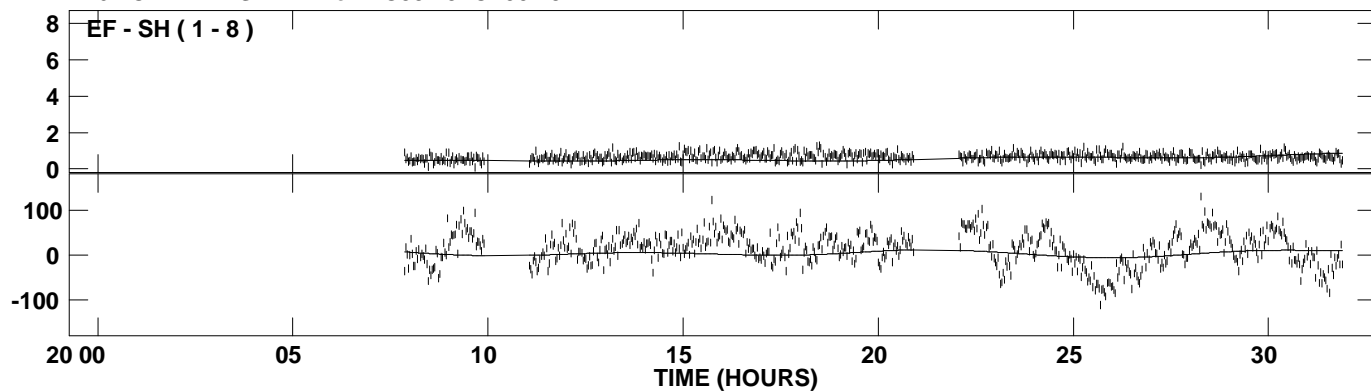
PLot file version 8 created 06-JUL-2009 18:56:23
Amplitude andPhase vs Time for 4C39.25.MULTI.1 CL # 3
IF 5 CHAN 1 STK LL of 4C39.25.ICL001.3



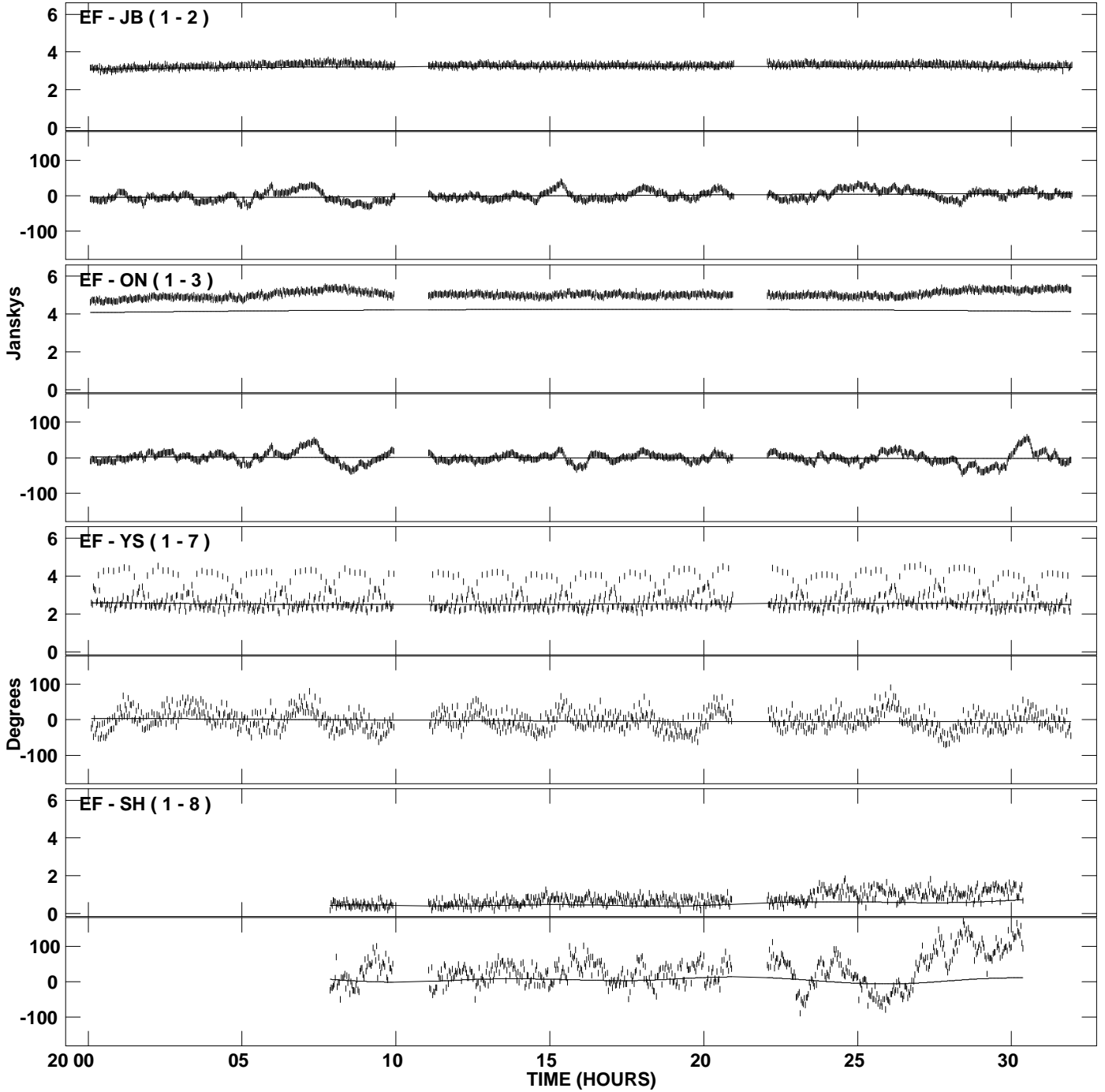
PLot file version 9 created 06-JUL-2009 18:56:23
Amplitude and Phase vs Time for 4C39.25.MULTI.1 CL # 3
IF 6 CHAN 1 STK LL of 4C39.25.ICL001.3



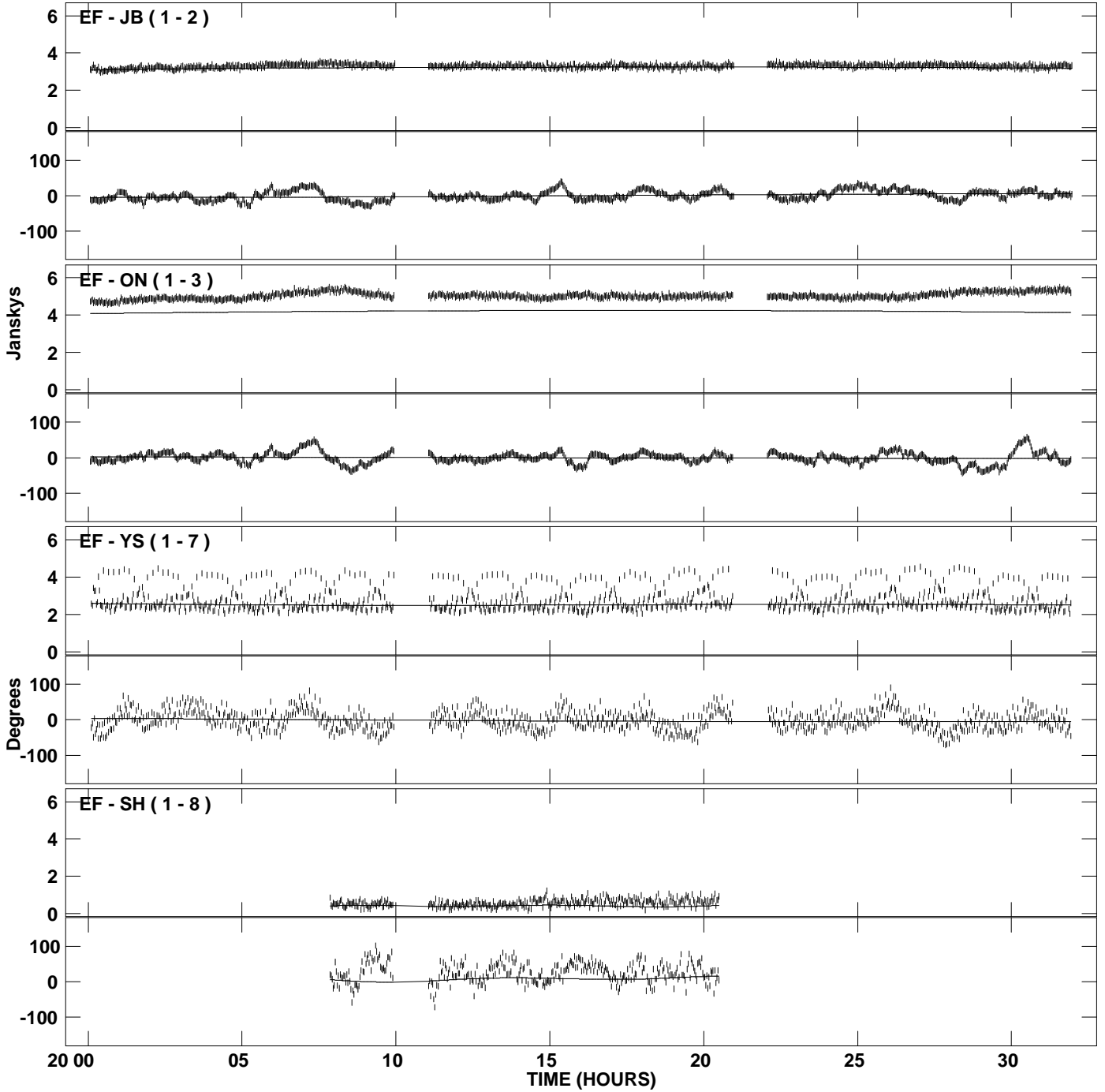
PLot file version 10 created 06-JUL-2009 18:56:23
Amplitude andPhase vs Time for 4C39.25.MULTI.1 CL # 3
IF 6 CHAN 1 STK LL of 4C39.25.ICL001.3



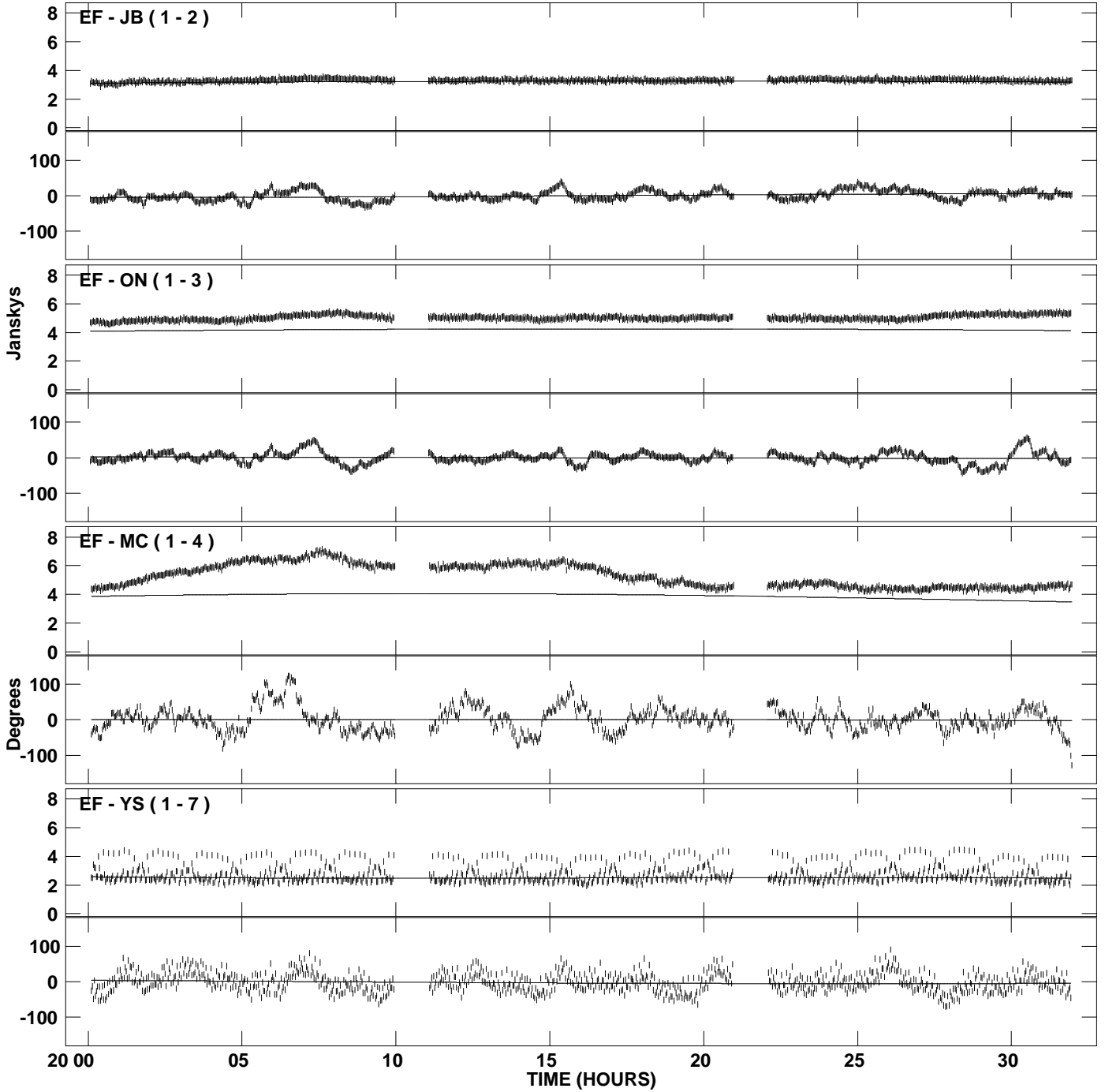
PLot file version 11 created 06-JUL-2009 18:56:23
Amplitude andPhase vs Time for 4C39.25.MULTI.1 CL # 3
IF 7 CHAN 1 STK LL of 4C39.25.ICL001.3



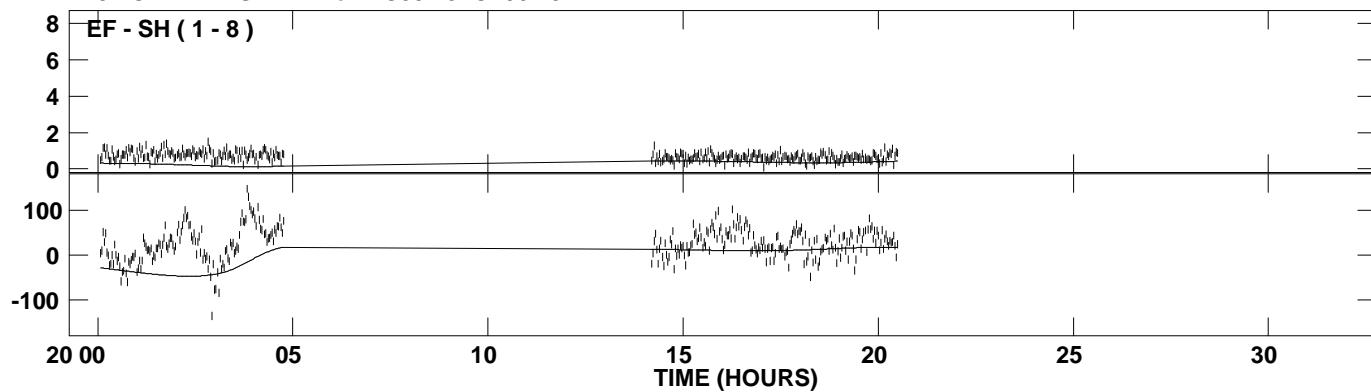
PLot file version 12 created 06-JUL-2009 18:56:24
Amplitude andPhase vs Time for 4C39.25.MULTI.1 CL # 3
IF 8 CHAN 1 STK LL of 4C39.25.ICL001.3



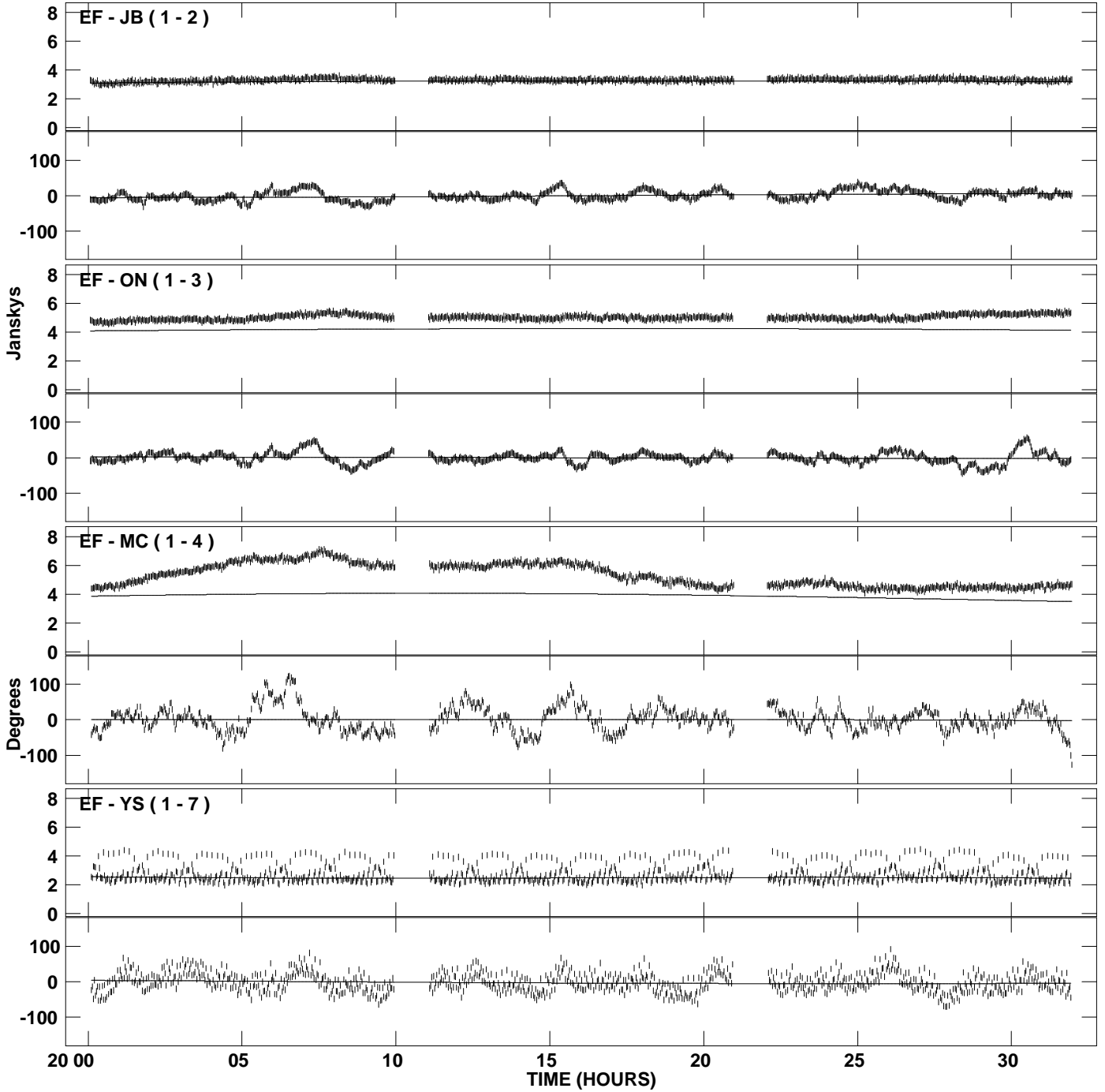
PLot file version 13 created 06-JUL-2009 18:56:24
Amplitude and Phase vs Time for 4C39.25.MULTI.1 CL # 3
IF 9 CHAN 1 STK LL of 4C39.25.ICL001.3



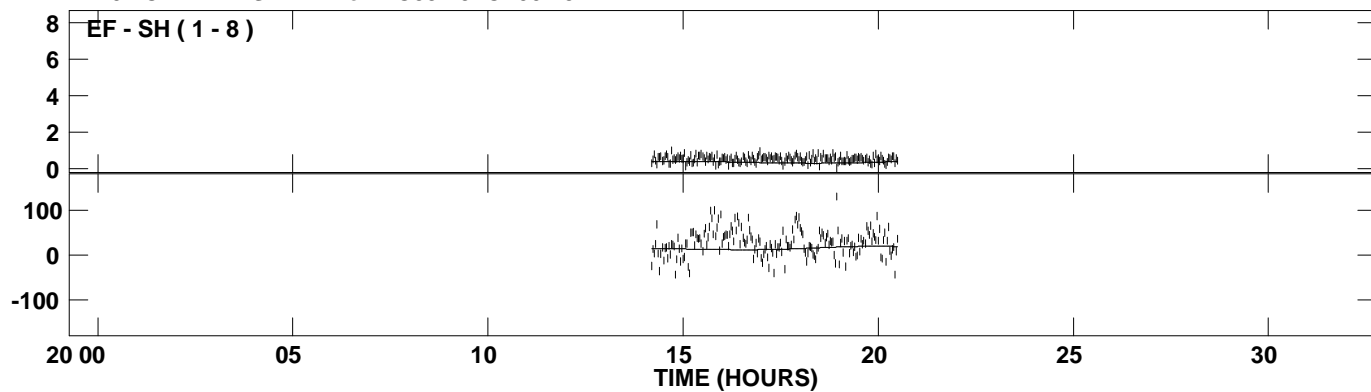
PLot file version 14 created 06-JUL-2009 18:56:24
Amplitude andPhase vs Time for 4C39.25.MULTI.1 CL # 3
IF 9 CHAN 1 STK LL of 4C39.25.ICL001.3



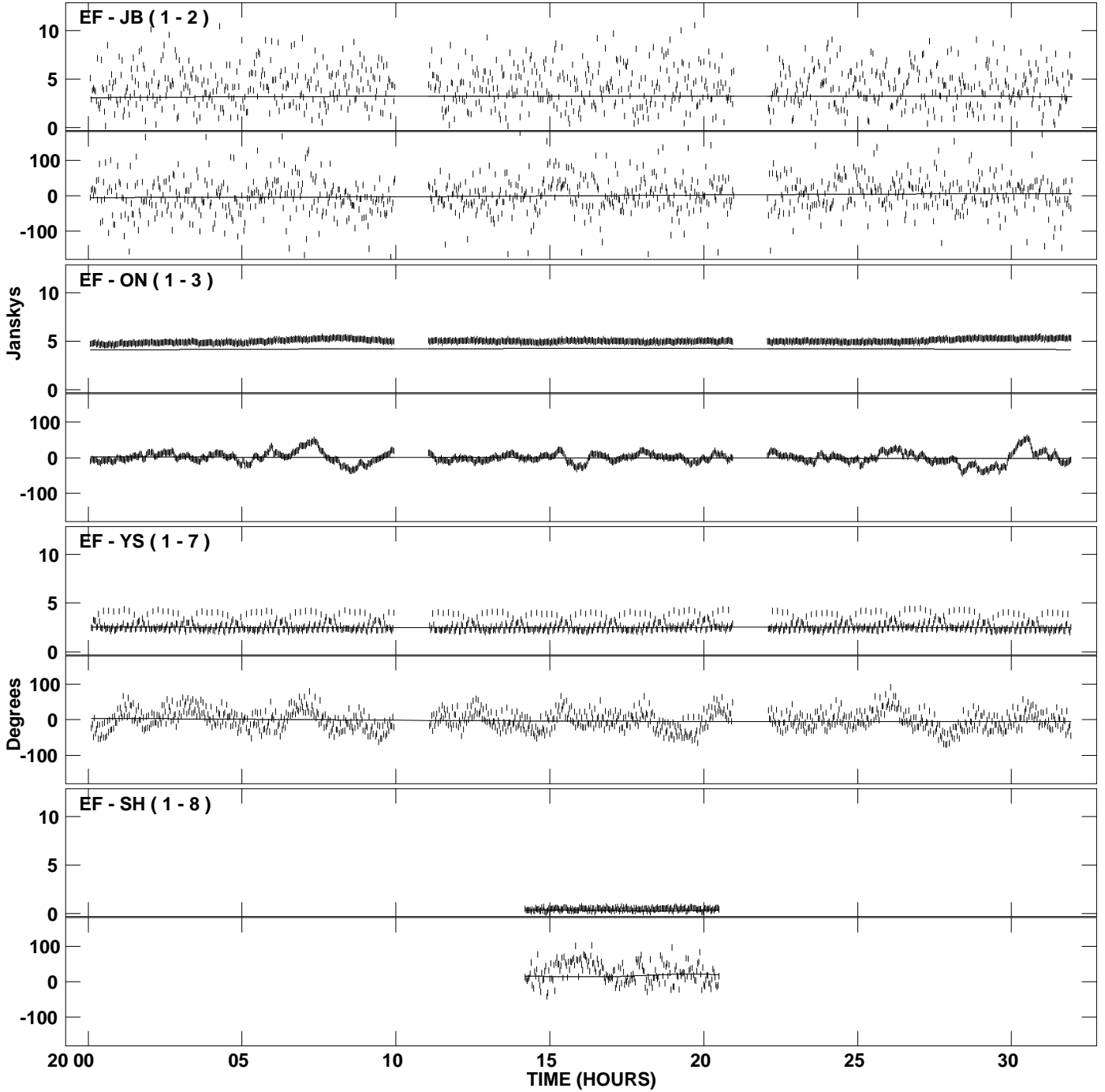
PLot file version 15 created 06-JUL-2009 18:56:24
Amplitude and Phase vs Time for 4C39.25.MULTI.1 CL # 3
IF 10 CHAN 1 STK LL of 4C39.25.ICL001.3



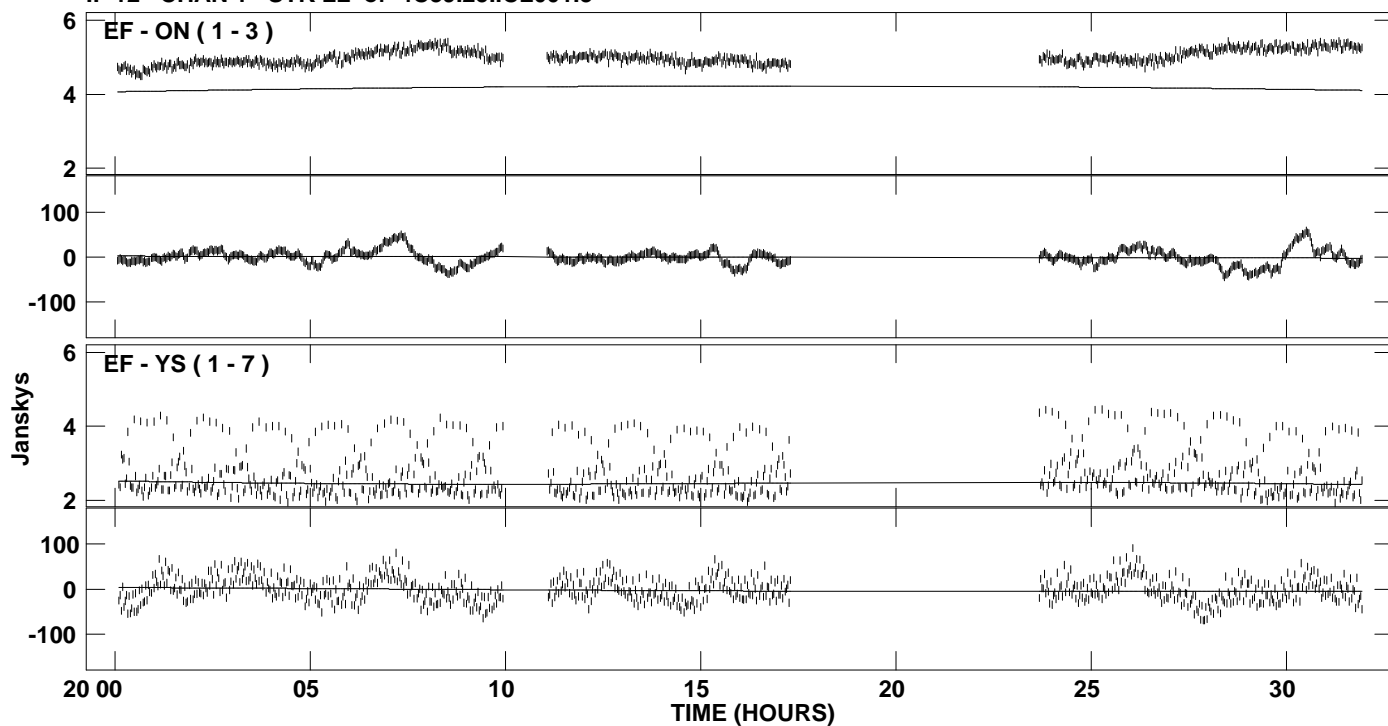
PLot file version 16 created 06-JUL-2009 18:56:24
Amplitude andPhase vs Time for 4C39.25.MULTI.1 CL # 3
IF 10 CHAN 1 STK LL of 4C39.25.ICL001.3



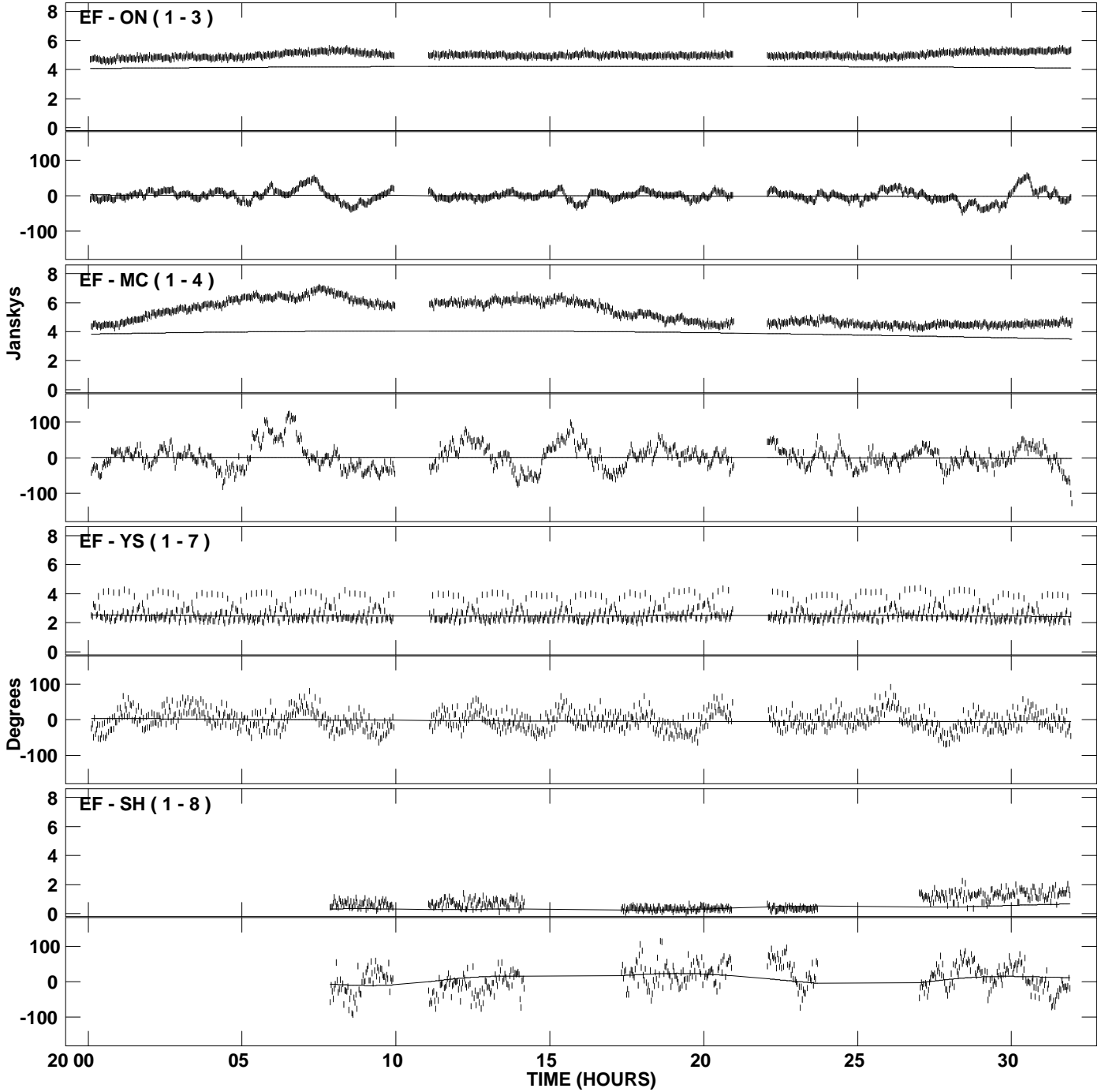
PLot file version 17 created 06-JUL-2009 18:56:24
Amplitude and Phase vs Time for 4C39.25.MULTI.1 CL # 3
IF 11 CHAN 1 STK LL of 4C39.25.ICL001.3



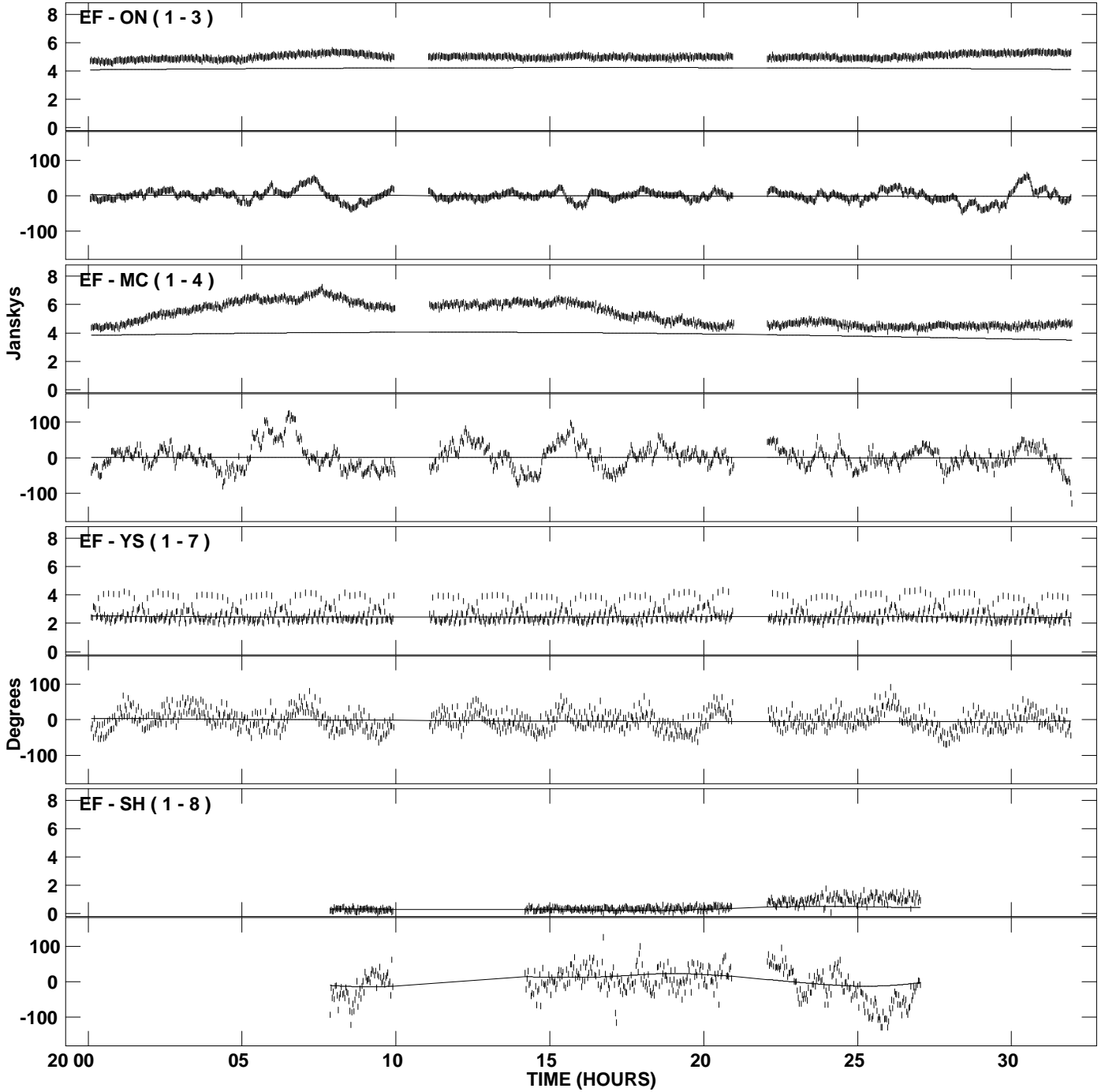
PLot file version 18 created 06-JUL-2009 18:56:25
Amplitude andPhase vs Time for 4C39.25.MULTI.1 CL # 3
IF 12 CHAN 1 STK LL of 4C39.25.ICL001.3



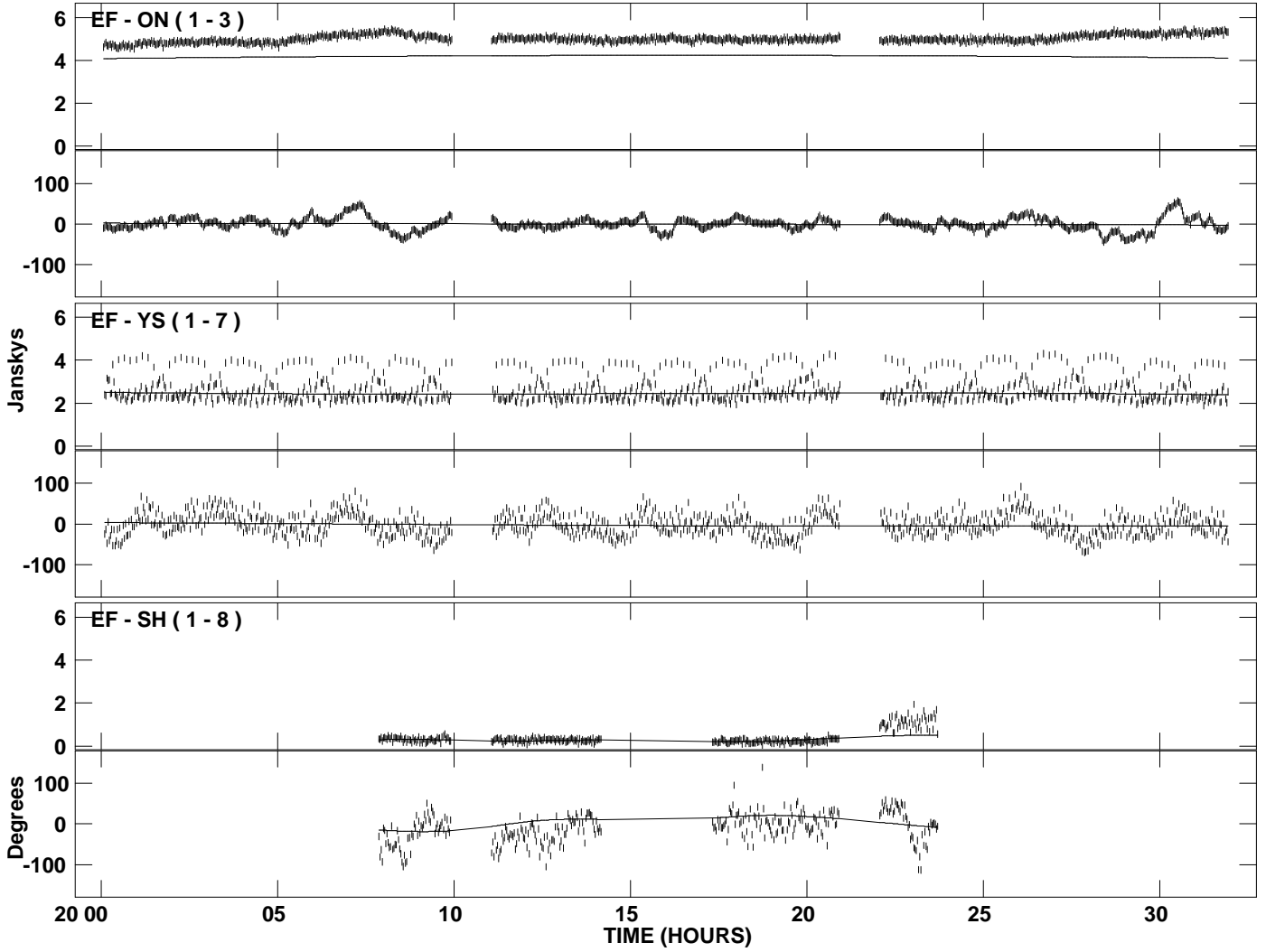
PLot file version 19 created 06-JUL-2009 18:56:25
Amplitude andPhase vs Time for 4C39.25.MULTI.1 CL # 3
IF 13 CHAN 1 STK LL of 4C39.25.ICL001.3



PLot file version 20 created 06-JUL-2009 18:56:25
Amplitude andPhase vs Time for 4C39.25.MULTI.1 CL # 3
IF 14 CHAN 1 STK LL of 4C39.25.ICL001.3



PLot file version 21 created 06-JUL-2009 18:56:25
Amplitude andPhase vs Time for 4C39.25.MULTI.1 CL # 3
IF 15 CHAN 1 STK LL of 4C39.25.ICL001.3



PLot file version 22 created 06-JUL-2009 18:56:26
Amplitude andPhase vs Time for 4C39.25.MULTI.1 CL # 3
IF 16 CHAN 1 STK LL of 4C39.25.ICL001.3

