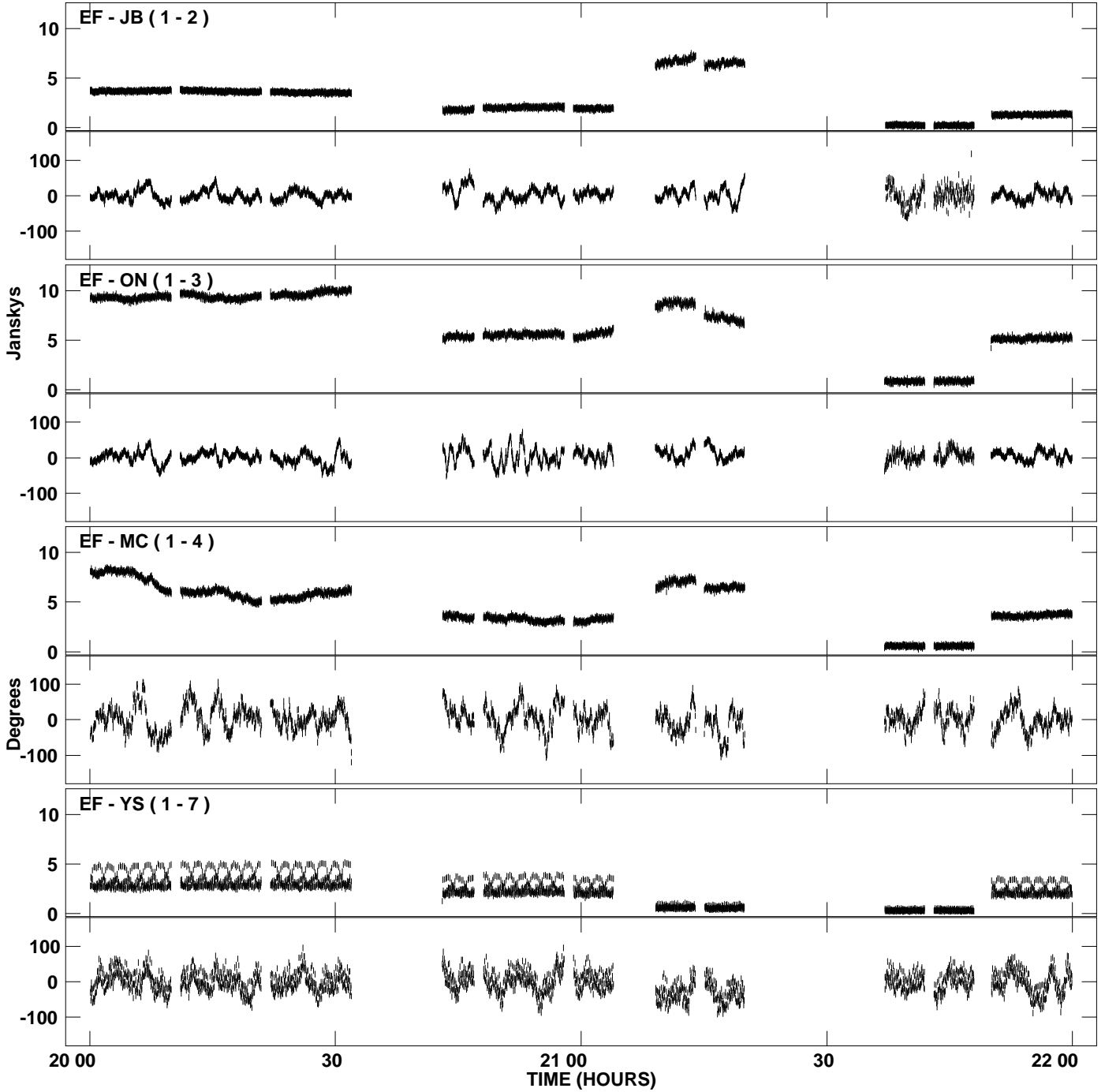
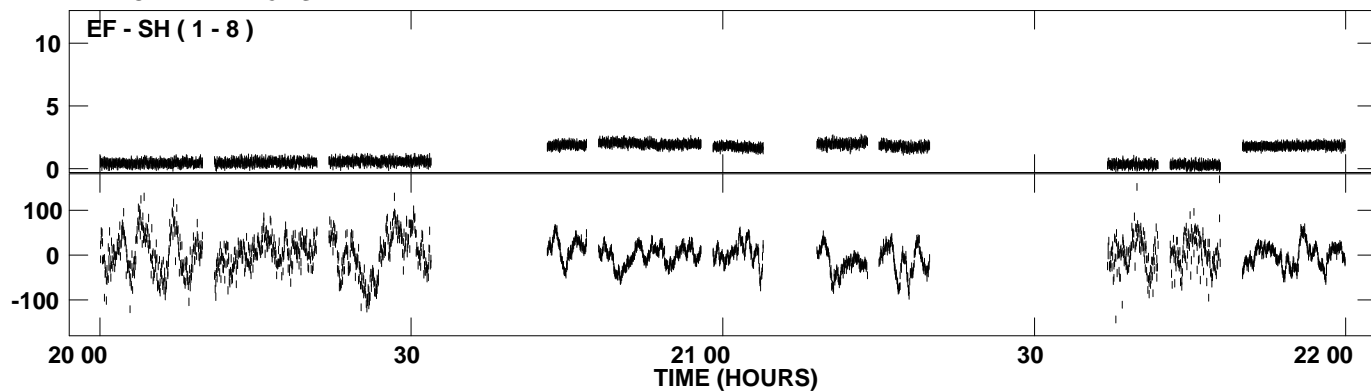


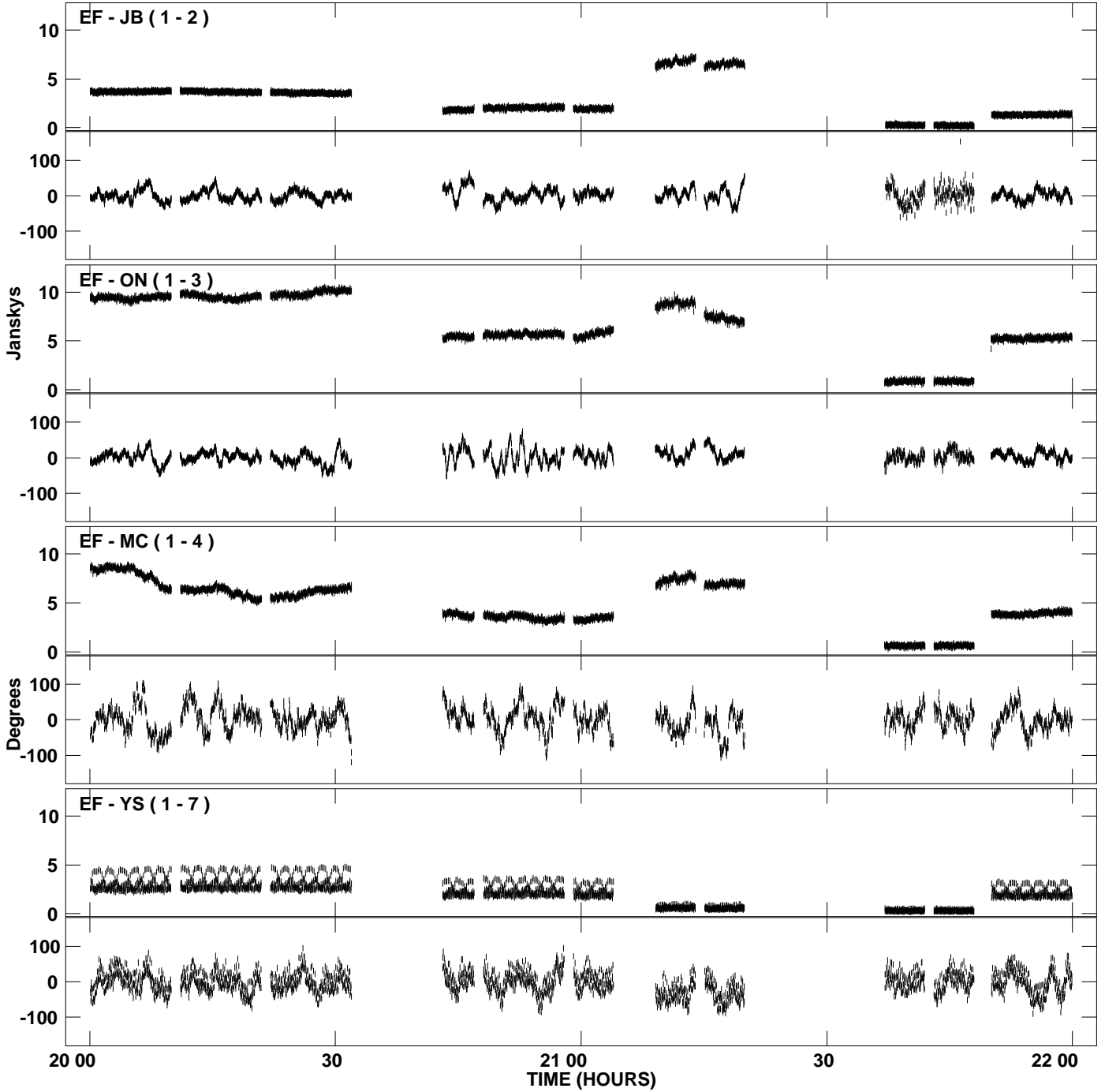
PLot file version 1 created 06-JUL-2009 18:52:34
Amplitude and Phase vs Time for N09K2.UVDATA.1 Vect aver. CL # 3
IF 1 CHAN 1 - 128 STK LL



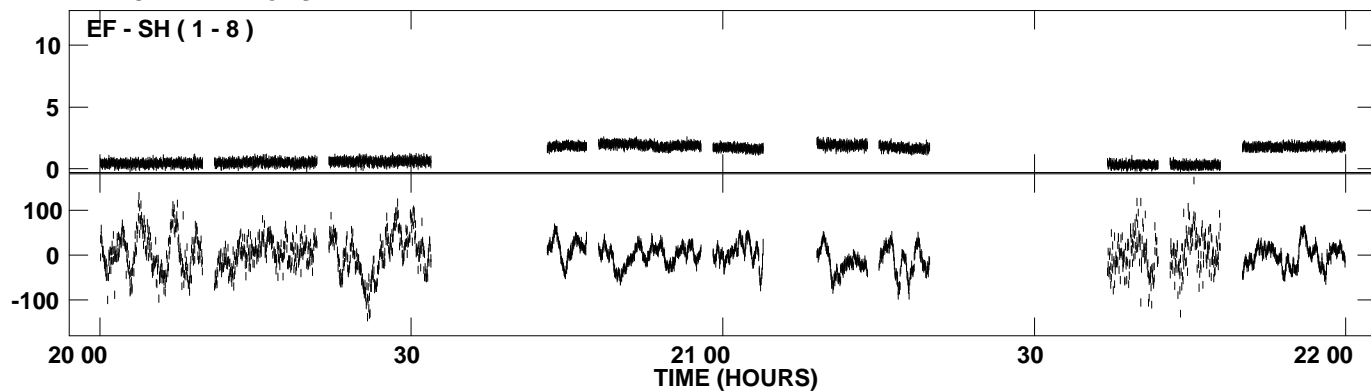
PLot file version 2 created 06-JUL-2009 18:52:34
Amplitude and Phase vs Time for N09K2.UVDATA.1 Vect aver. CL # 3
IF 1 CHAN 1 - 128 STK LL



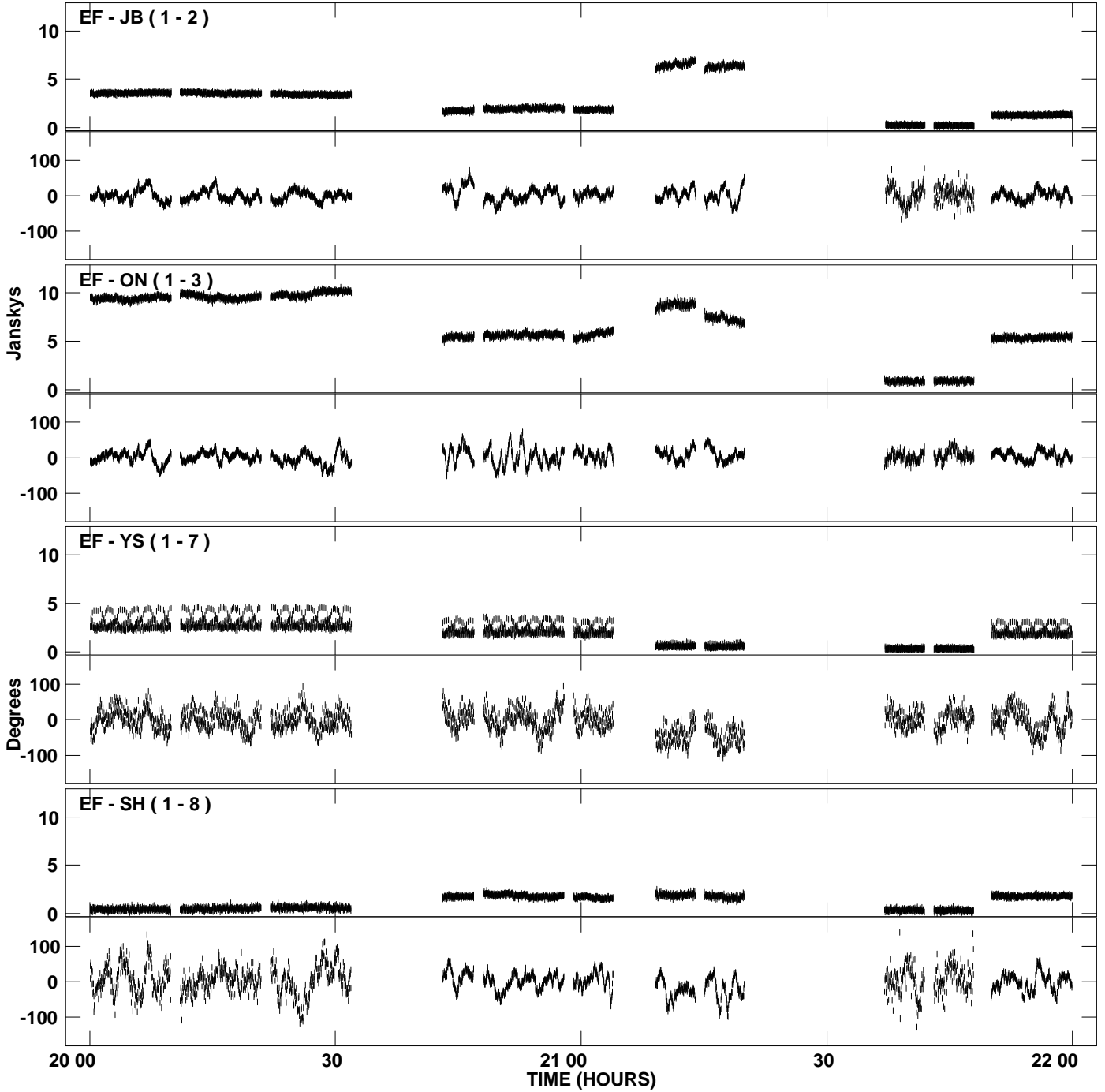
PLot file version 3 created 06-JUL-2009 18:52:37
Amplitude and Phase vs Time for N09K2.UVDATA.1 Vect aver. CL # 3
IF 2 CHAN 1 - 128 STK LL



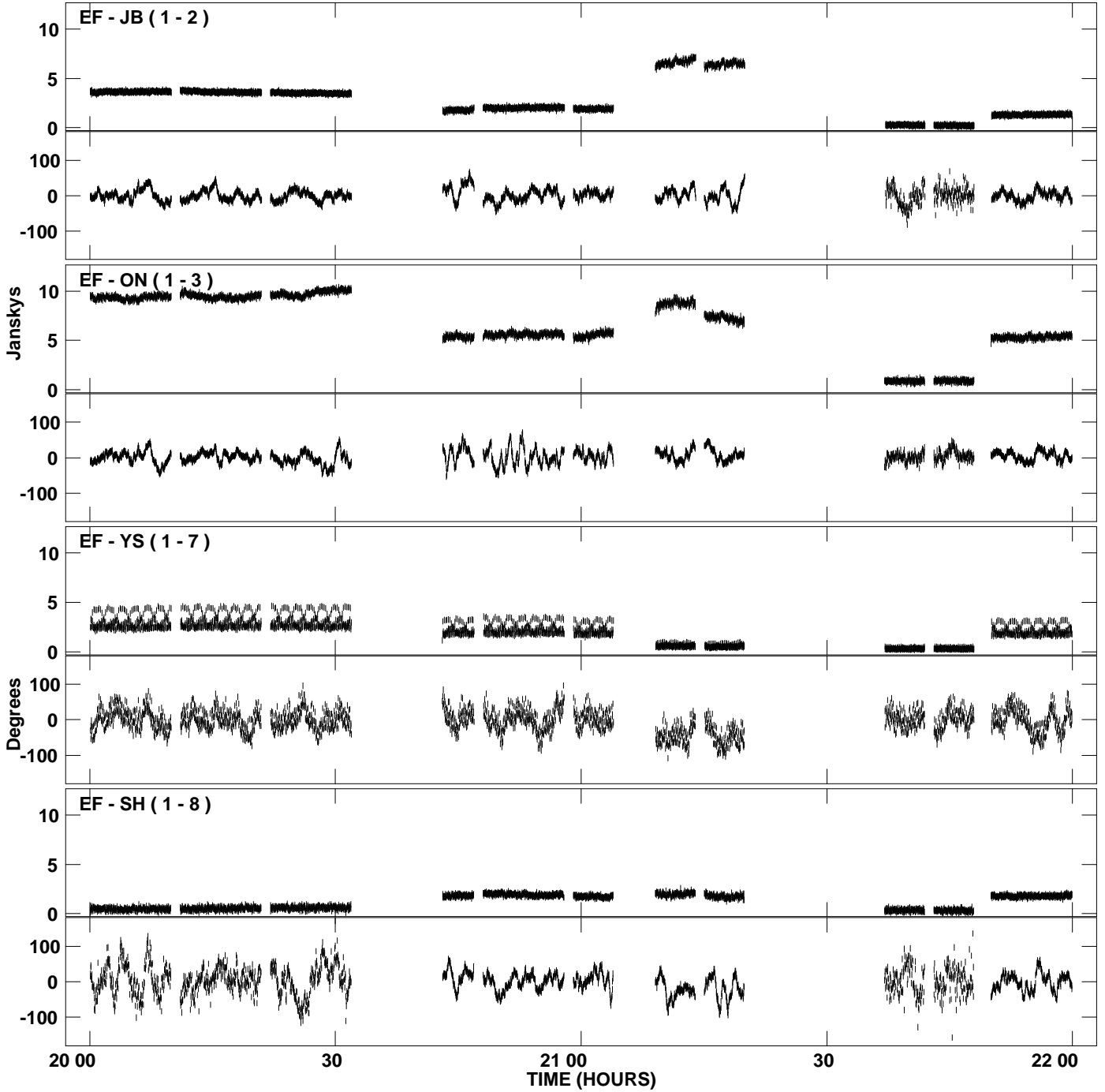
PLot file version 4 created 06-JUL-2009 18:52:37
Amplitude andPhase vs Time for N09K2.UVDATA.1 Vect aver. CL # 3
IF 2 CHAN 1 - 128 STK LL



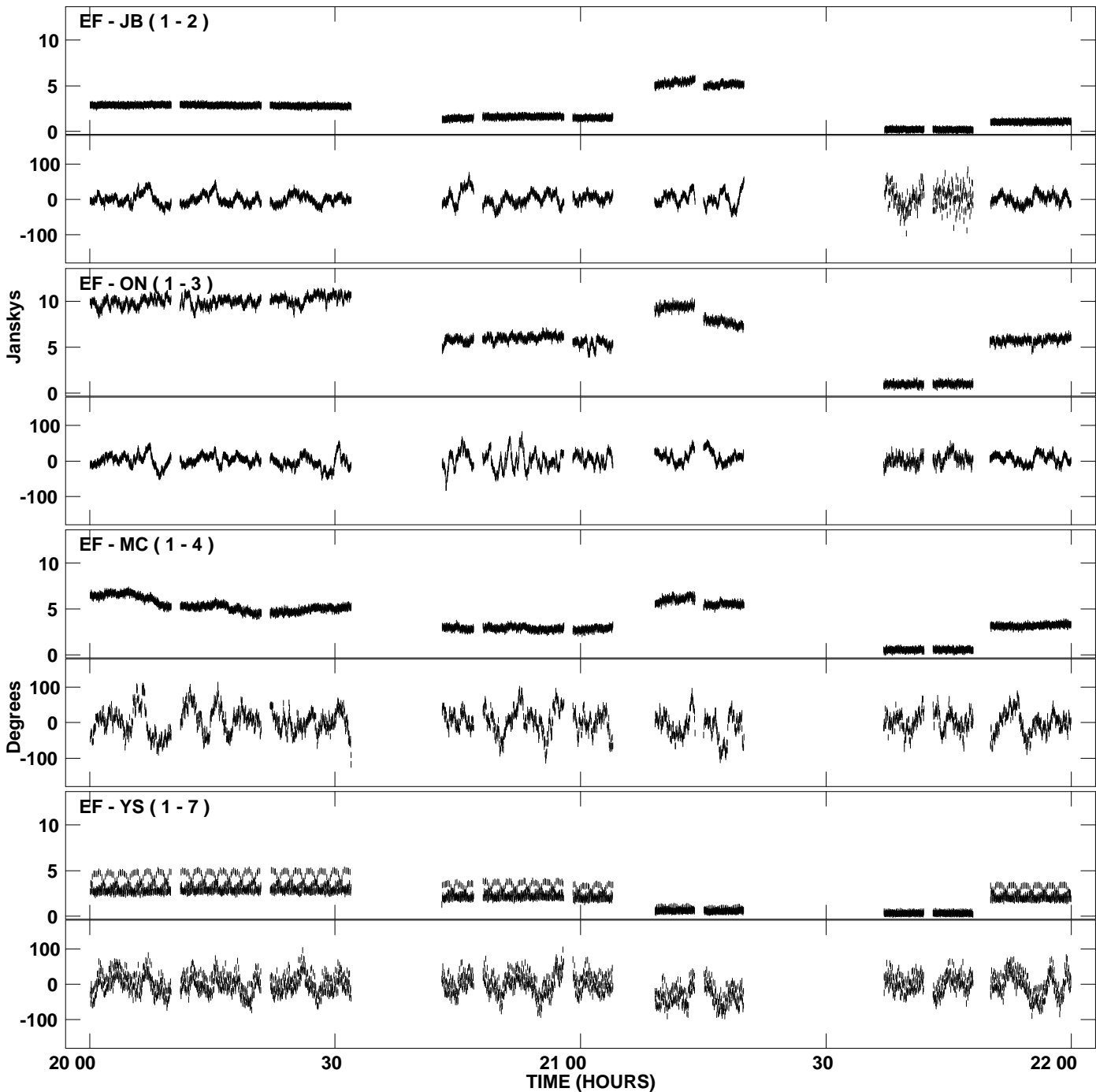
PLot file version 5 created 06-JUL-2009 18:52:39
Amplitude and Phase vs Time for N09K2.UVDATA.1 Vect aver. CL # 3
IF 3 CHAN 1 - 128 STK LL



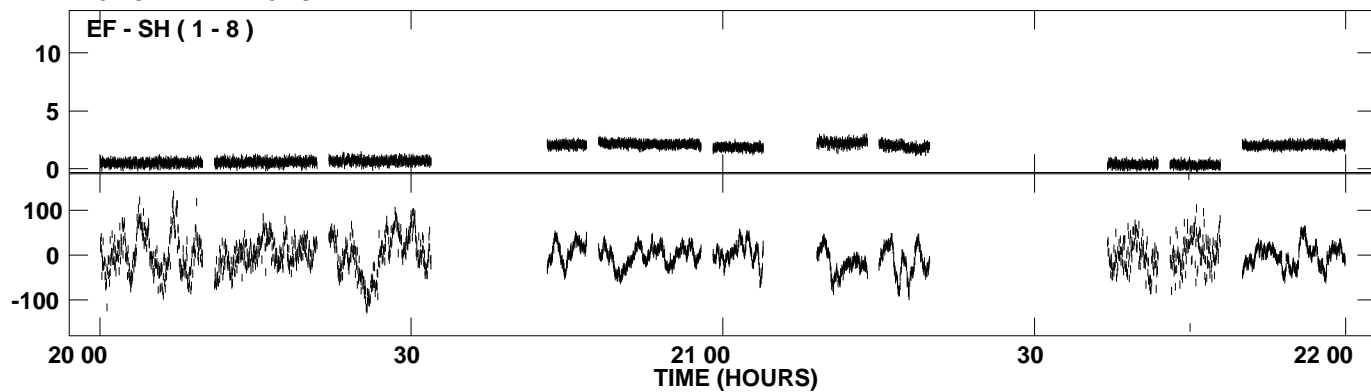
PLot file version 6 created 06-JUL-2009 18:52:41
Amplitude and Phase vs Time for N09K2.UVDATA.1 Vect aver. CL # 3
IF 4 CHAN 1 - 128 STK LL



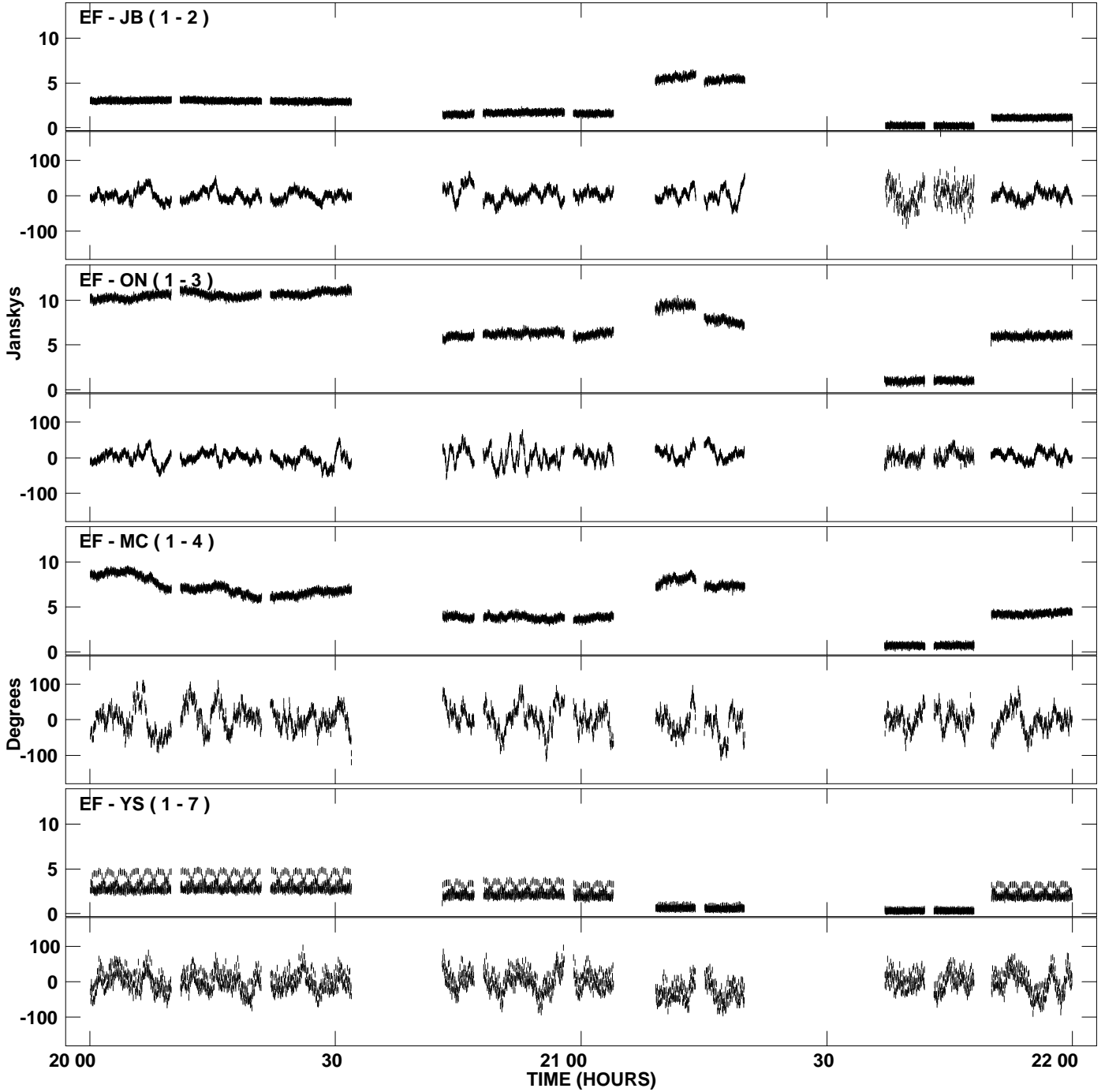
PLot file version 7 created 06-JUL-2009 18:52:43
Amplitude and Phase vs Time for N09K2.UVDATA.1 Vect aver. CL # 3
IF 5 CHAN 1 - 128 STK LL



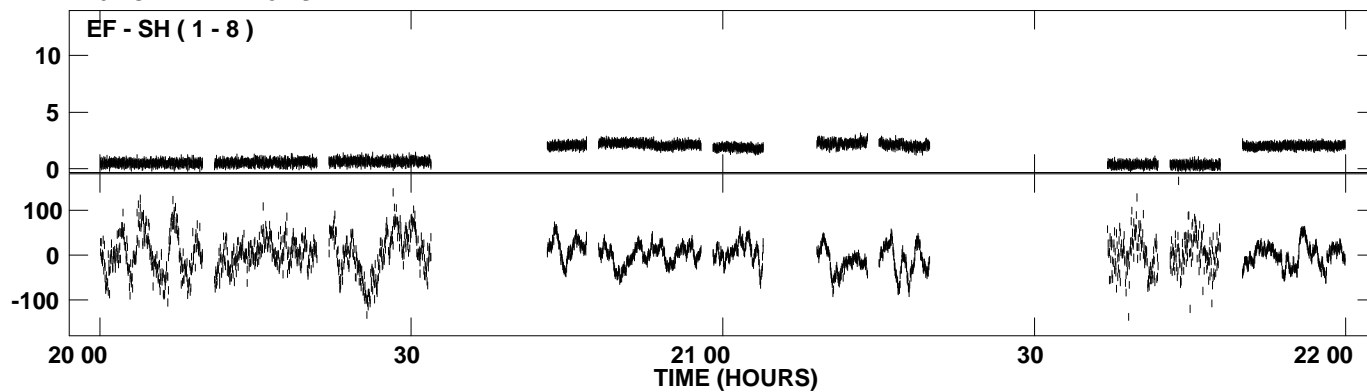
PLot file version 8 created 06-JUL-2009 18:52:43
Amplitude and Phase vs Time for N09K2.UVDATA.1 Vect aver. CL # 3
IF 5 CHAN 1 - 128 STK LL



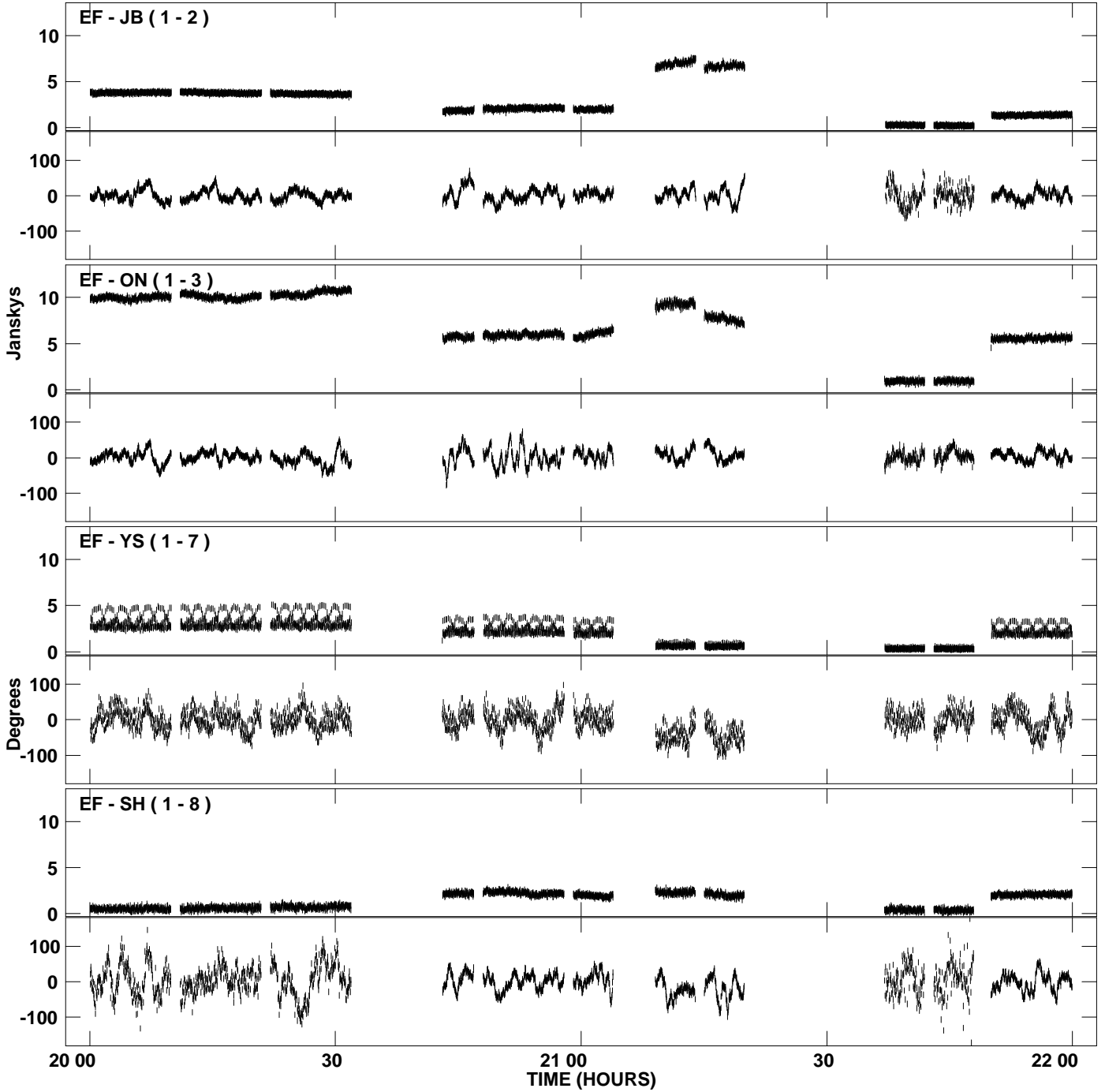
PLot file version 9 created 06-JUL-2009 18:52:45
Amplitude and Phase vs Time for N09K2.UVDATA.1 Vect aver. CL # 3
IF 6 CHAN 1 - 128 STK LL



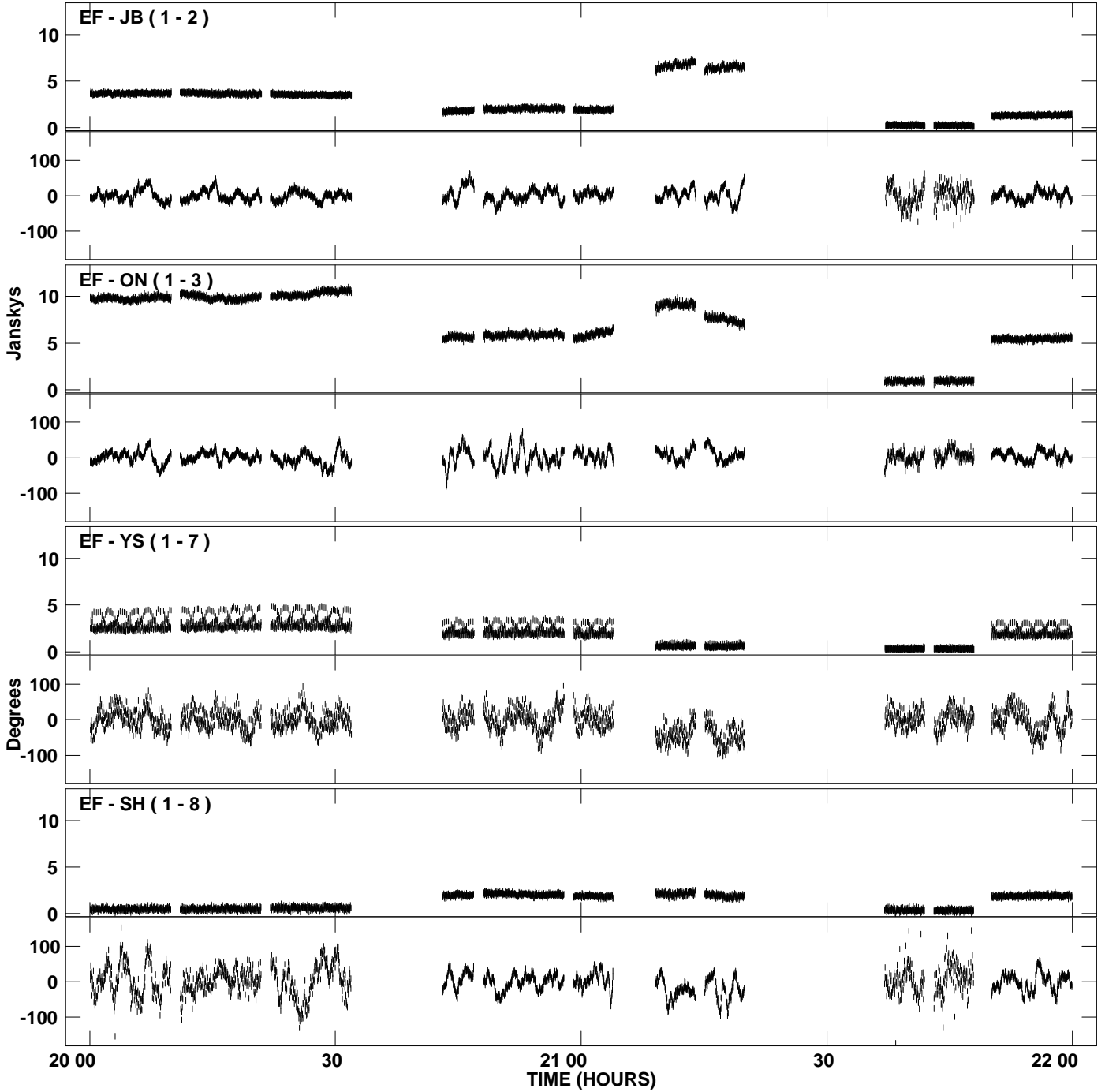
PLot file version 10 created 06-JUL-2009 18:52:45
Amplitude andPhase vs Time for N09K2.UVDATA.1 Vect aver. CL # 3
IF 6 CHAN 1 - 128 STK LL



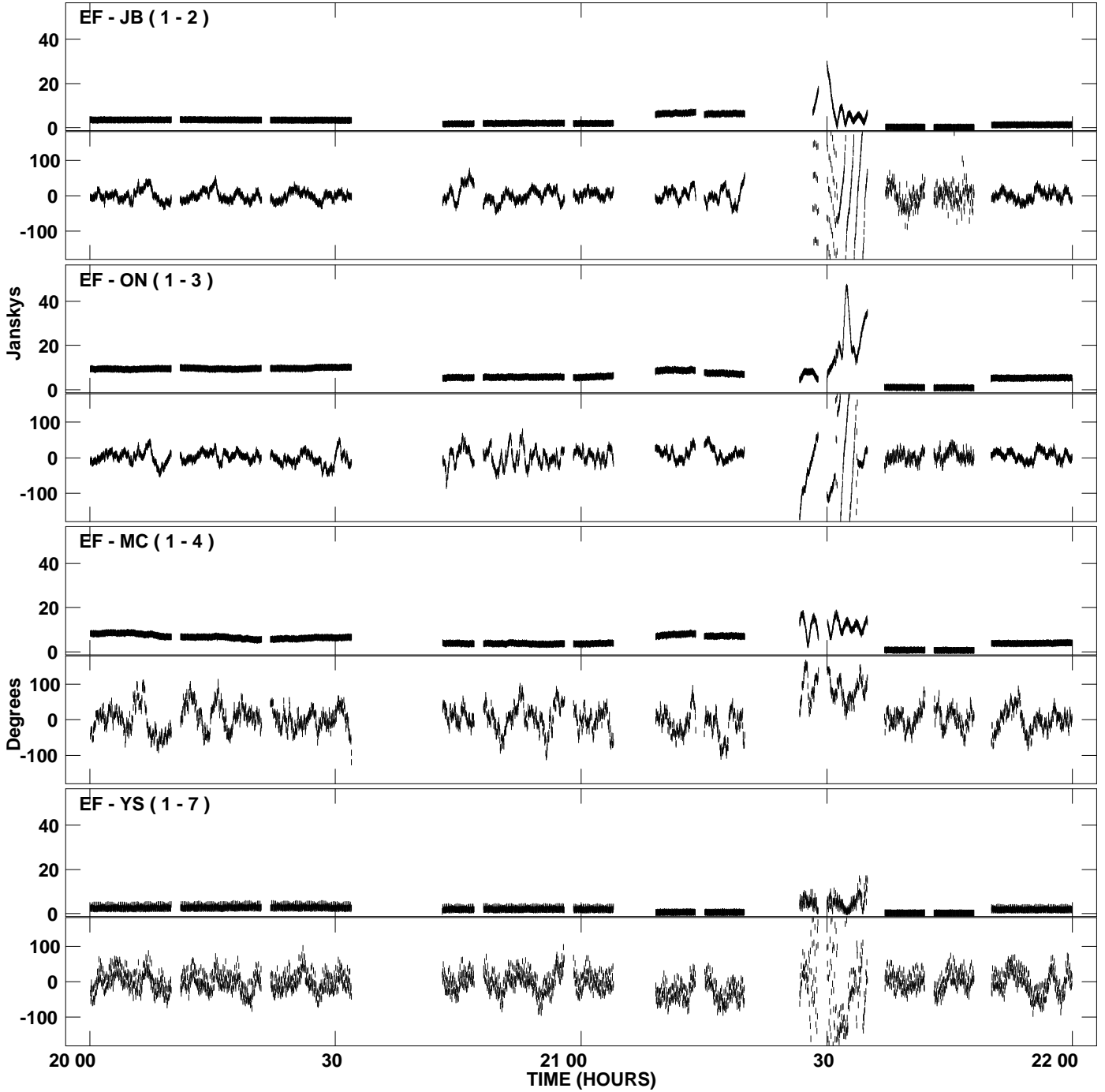
PLot file version 11 created 06-JUL-2009 18:52:47
Amplitude and Phase vs Time for N09K2.UVDATA.1 Vect aver. CL # 3
IF 7 CHAN 1 - 128 STK LL



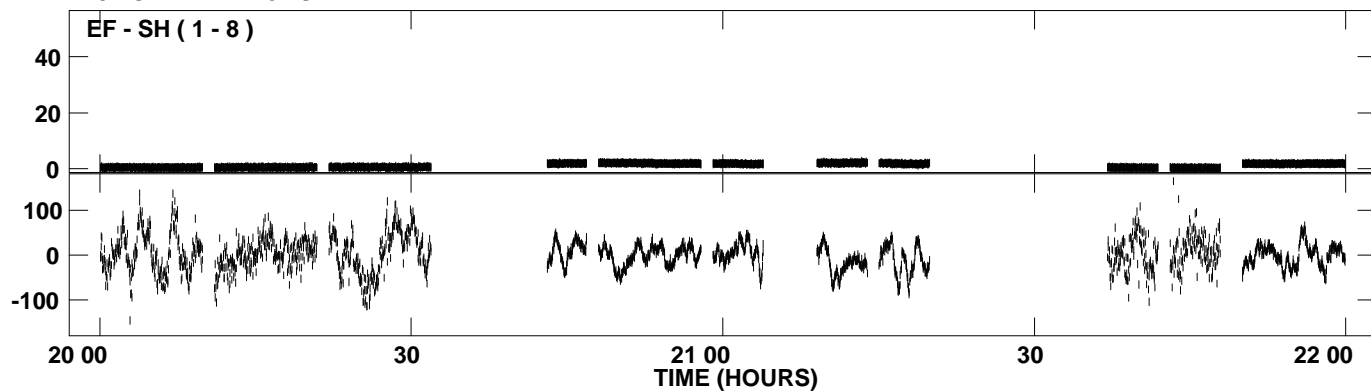
PLot file version 12 created 06-JUL-2009 18:52:49
Amplitude and Phase vs Time for N09K2.UVDATA.1 Vect aver. CL # 3
IF 8 CHAN 1 - 128 STK LL



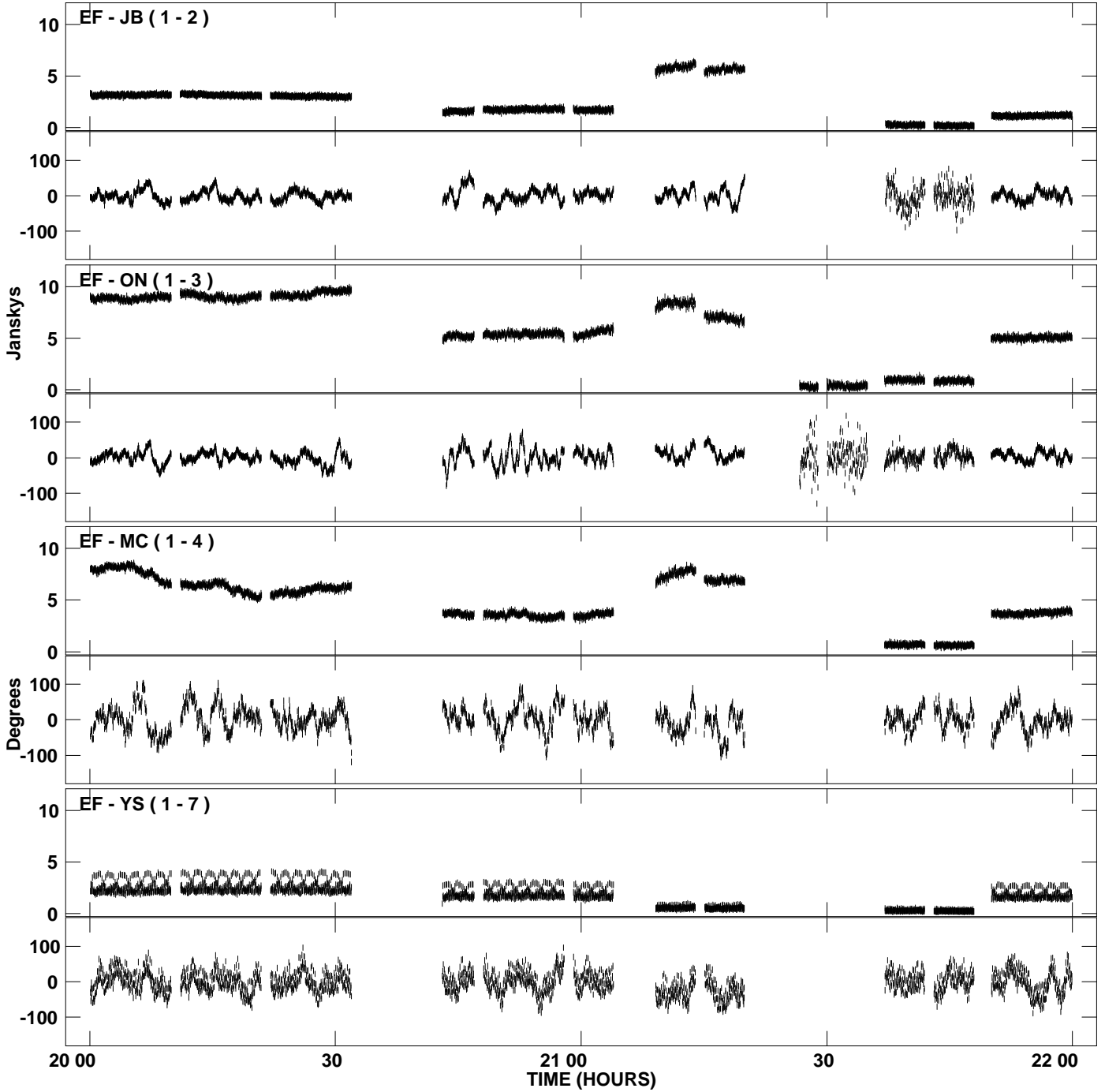
PLot file version 13 created 06-JUL-2009 18:52:52
Amplitude andPhase vs Time for N09K2.UVDATA.1 Vect aver. CL # 3
IF 9 CHAN 1 - 128 STK LL



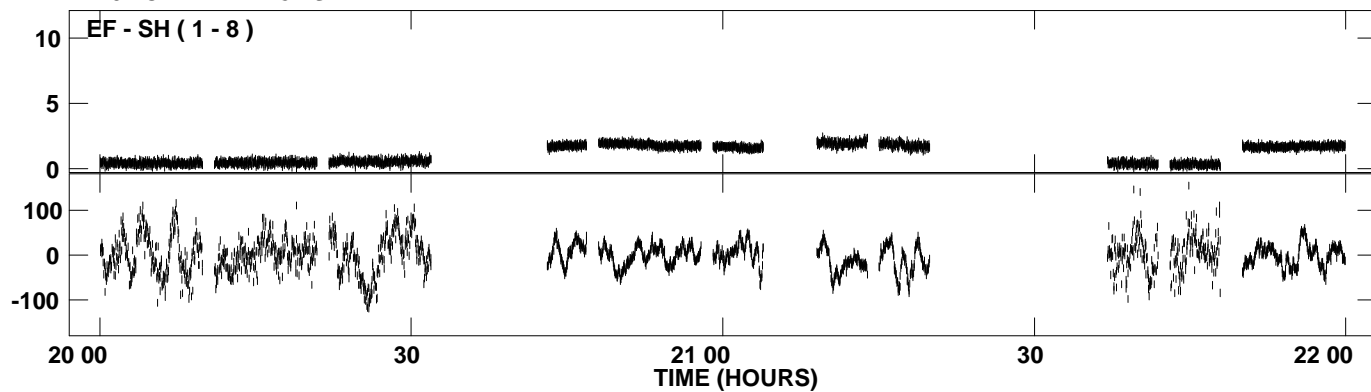
PLot file version 14 created 06-JUL-2009 18:52:52
Amplitude andPhase vs Time for N09K2.UVDATA.1 Vect aver. CL # 3
IF 9 CHAN 1 - 128 STK LL



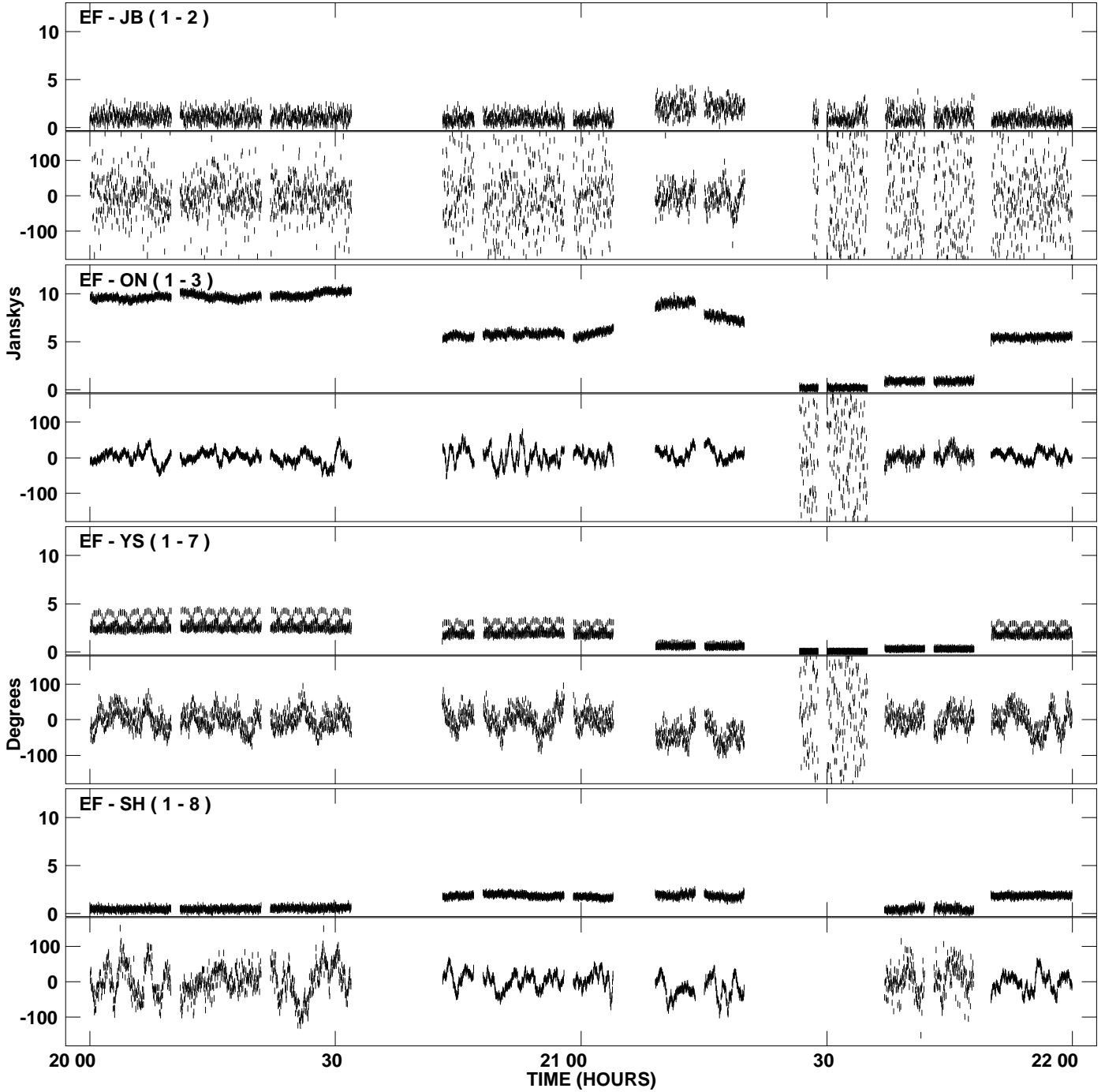
PLot file version 15 created 06-JUL-2009 18:52:54
Amplitude and Phase vs Time for N09K2.UVDATA.1 Vect aver. CL # 3
IF 10 CHAN 1 - 128 STK LL



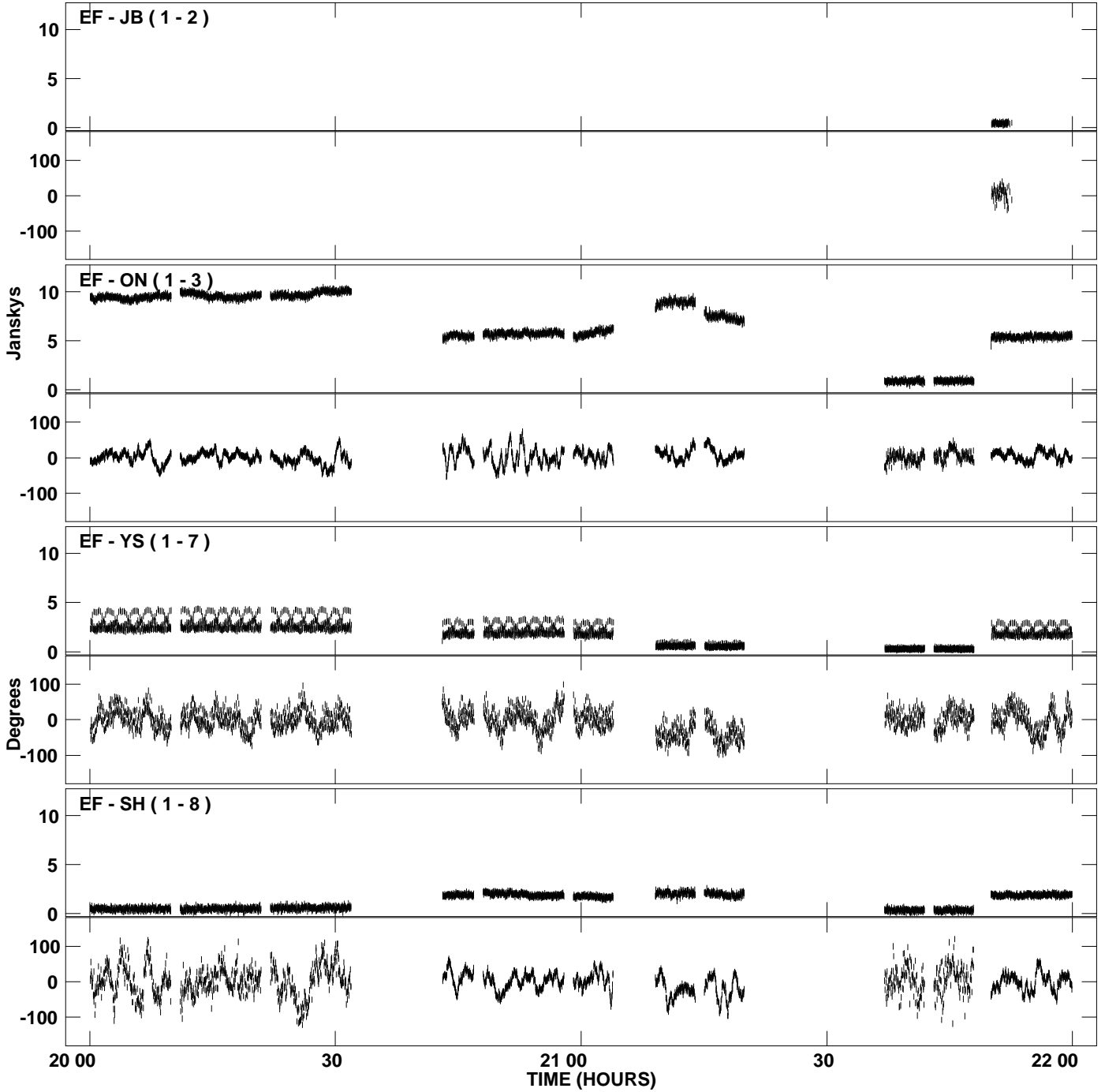
PLot file version 16 created 06-JUL-2009 18:52:54
Amplitude andPhase vs Time for N09K2.UVDATA.1 Vect aver. CL # 3
IF 10 CHAN 1 - 128 STK LL



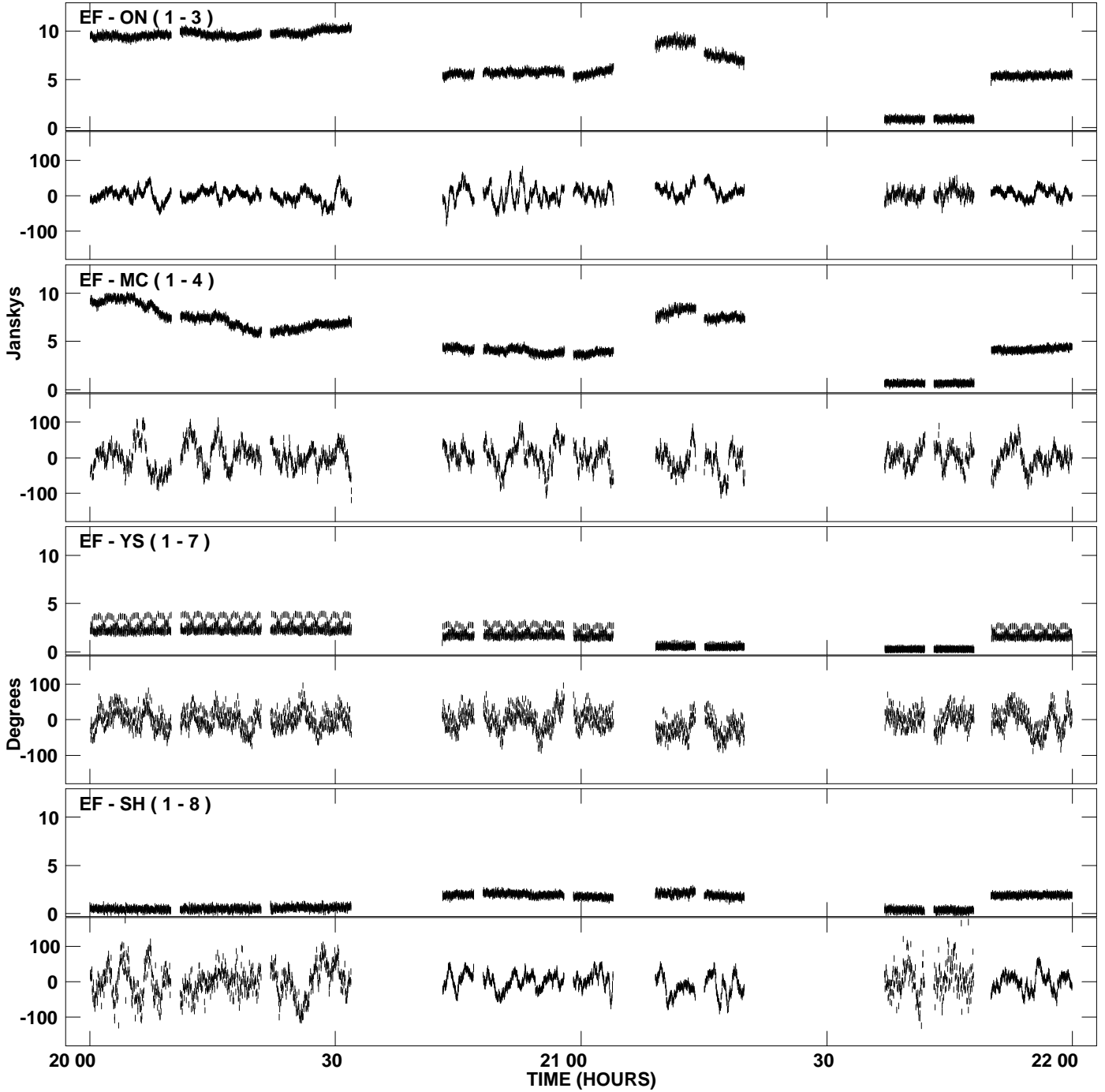
PLot file version 17 created 06-JUL-2009 18:52:56
Amplitude andPhase vs Time for N09K2.UVDATA.1 Vect aver. CL # 3
IF 11 CHAN 1 - 128 STK LL



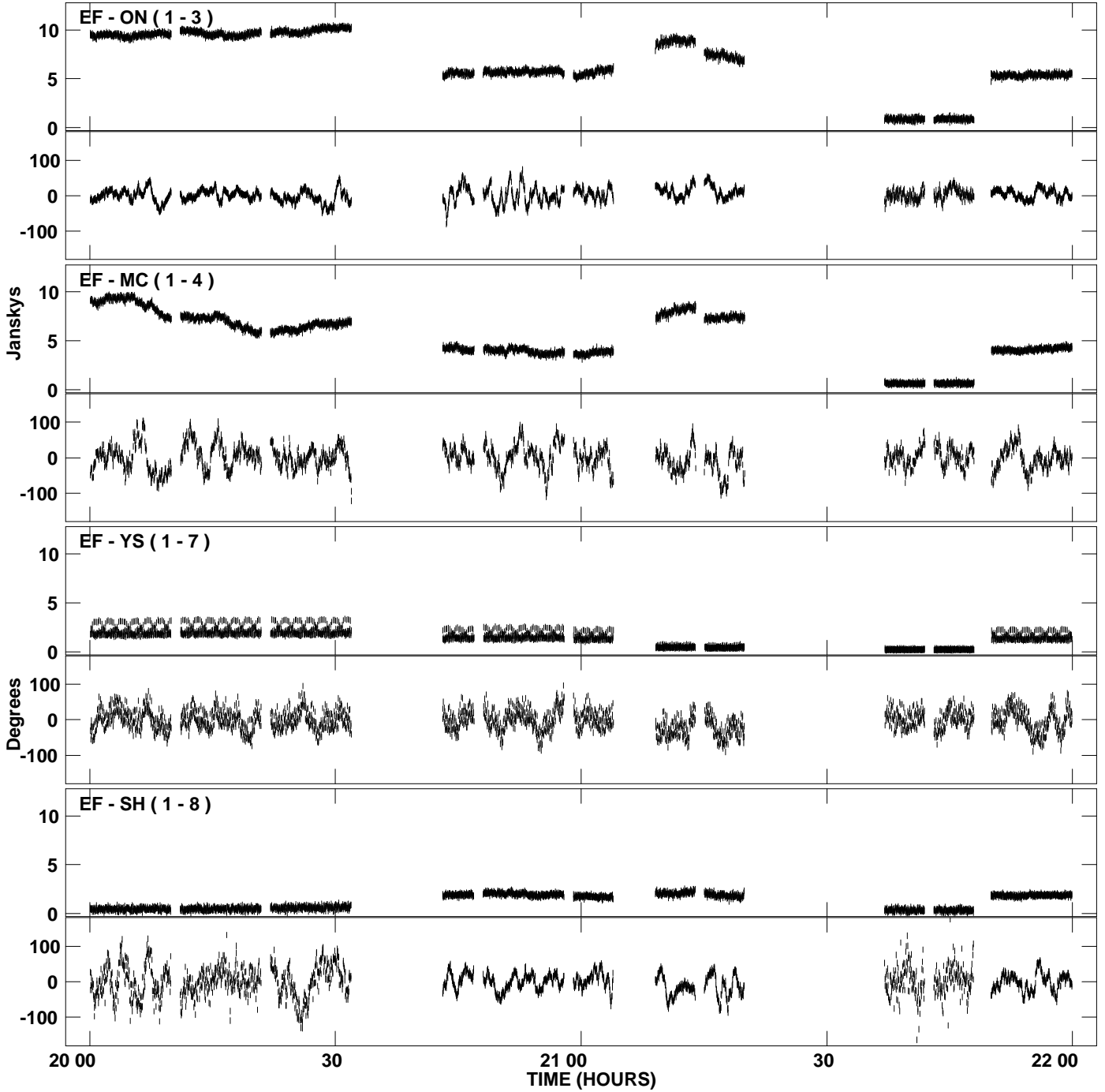
PLot file version 18 created 06-JUL-2009 18:52:58
Amplitude andPhase vs Time for N09K2.UVDATA.1 Vect aver. CL # 3
IF 12 CHAN 1 - 128 STK LL



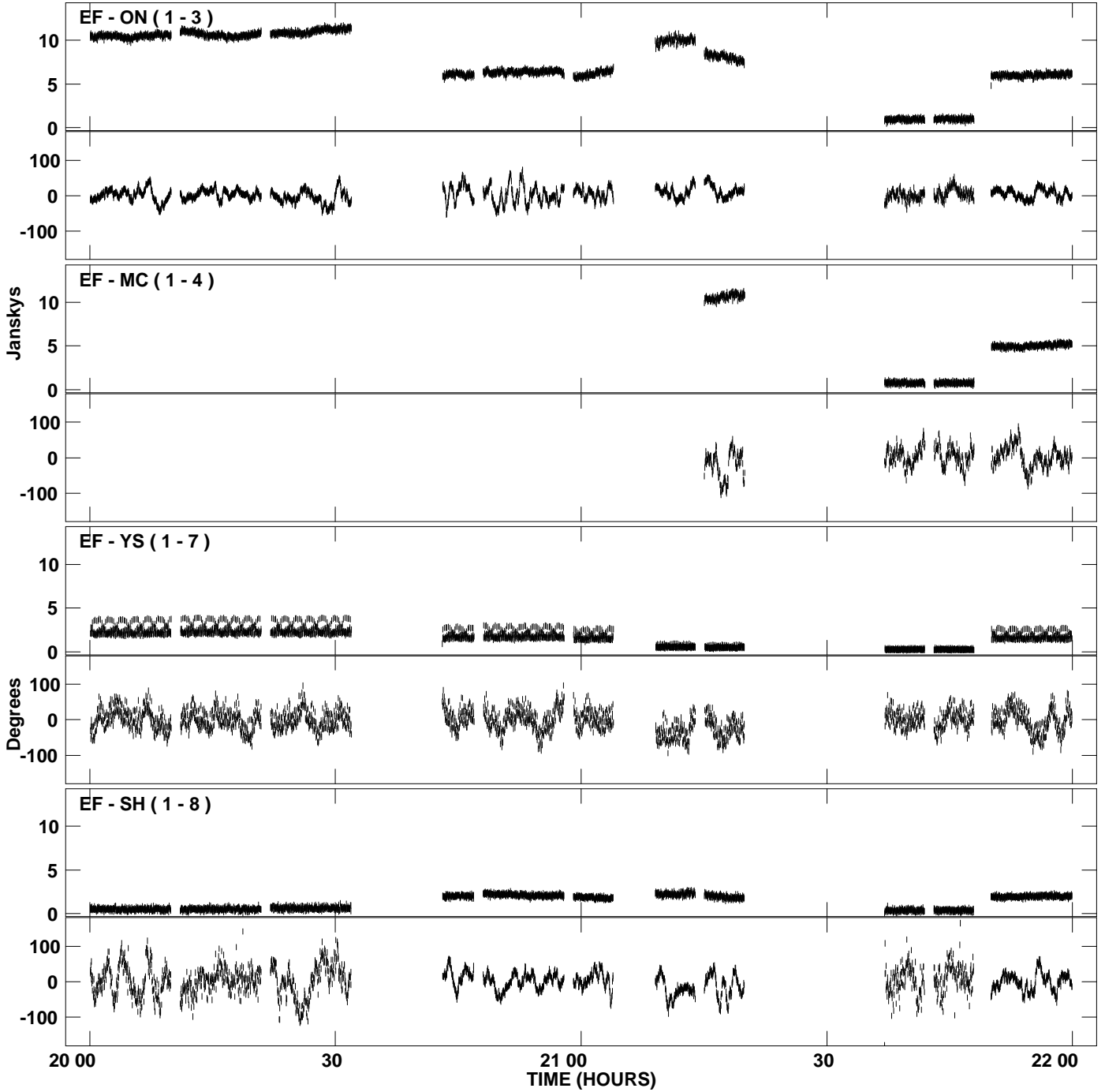
PLot file version 19 created 06-JUL-2009 18:53:00
Amplitude andPhase vs Time for N09K2.UVDATA.1 Vect aver. CL # 3
IF 13 CHAN 1 - 128 STK LL



PLot file version 20 created 06-JUL-2009 18:53:02
Amplitude and Phase vs Time for N09K2.UVDATA.1 Vect aver. CL # 3
IF 14 CHAN 1 - 128 STK LL



PLot file version 21 created 06-JUL-2009 18:53:04
Amplitude and Phase vs Time for N09K2.UVDATA.1 Vect aver. CL # 3
IF 15 CHAN 1 - 128 STK LL



PLot file version 22 created 06-JUL-2009 18:53:05
Amplitude and Phase vs Time for N09K2.UVDATA.1 Vect aver. CL # 3
IF 16 CHAN 1 - 128 STK LL

