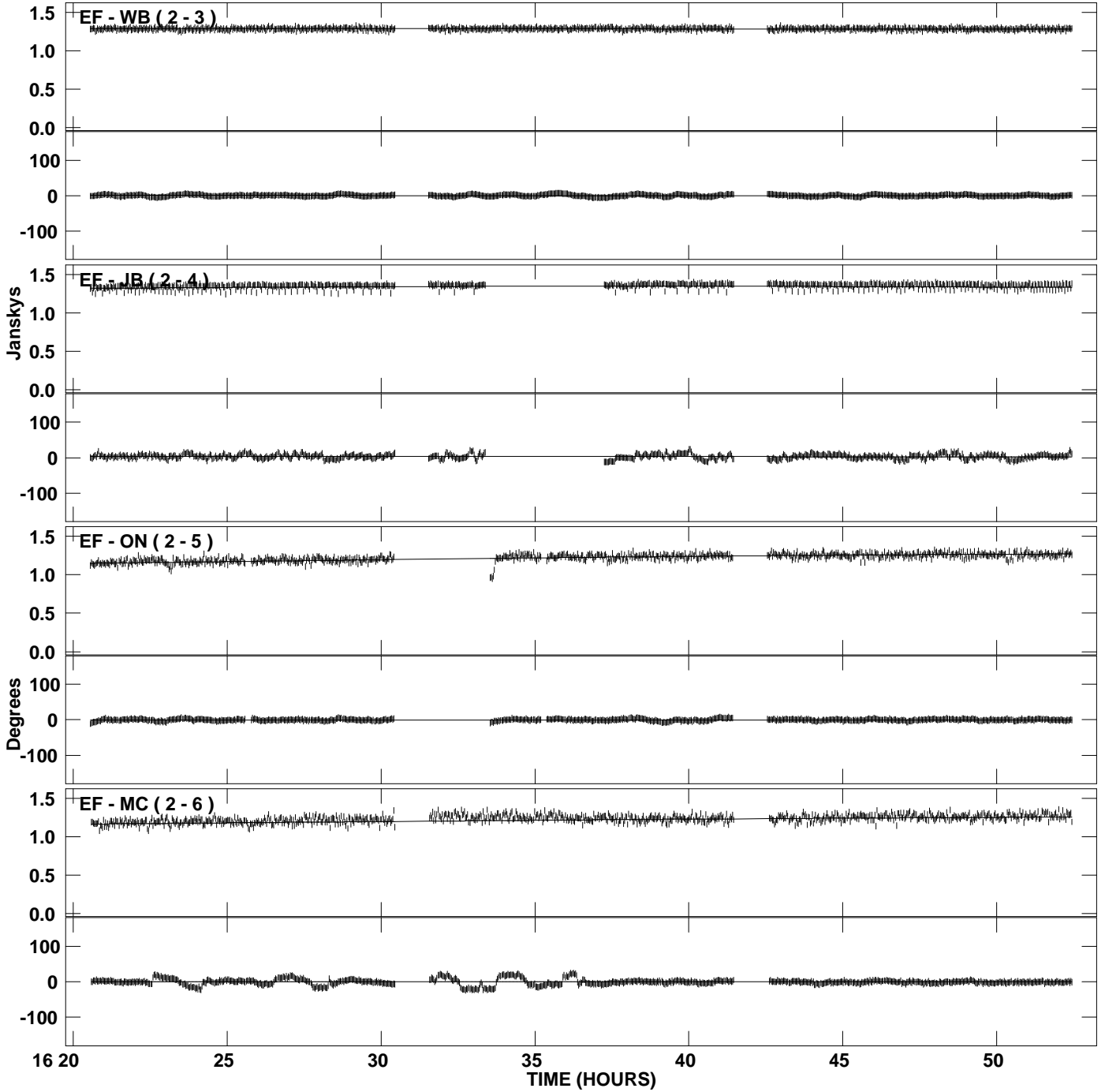
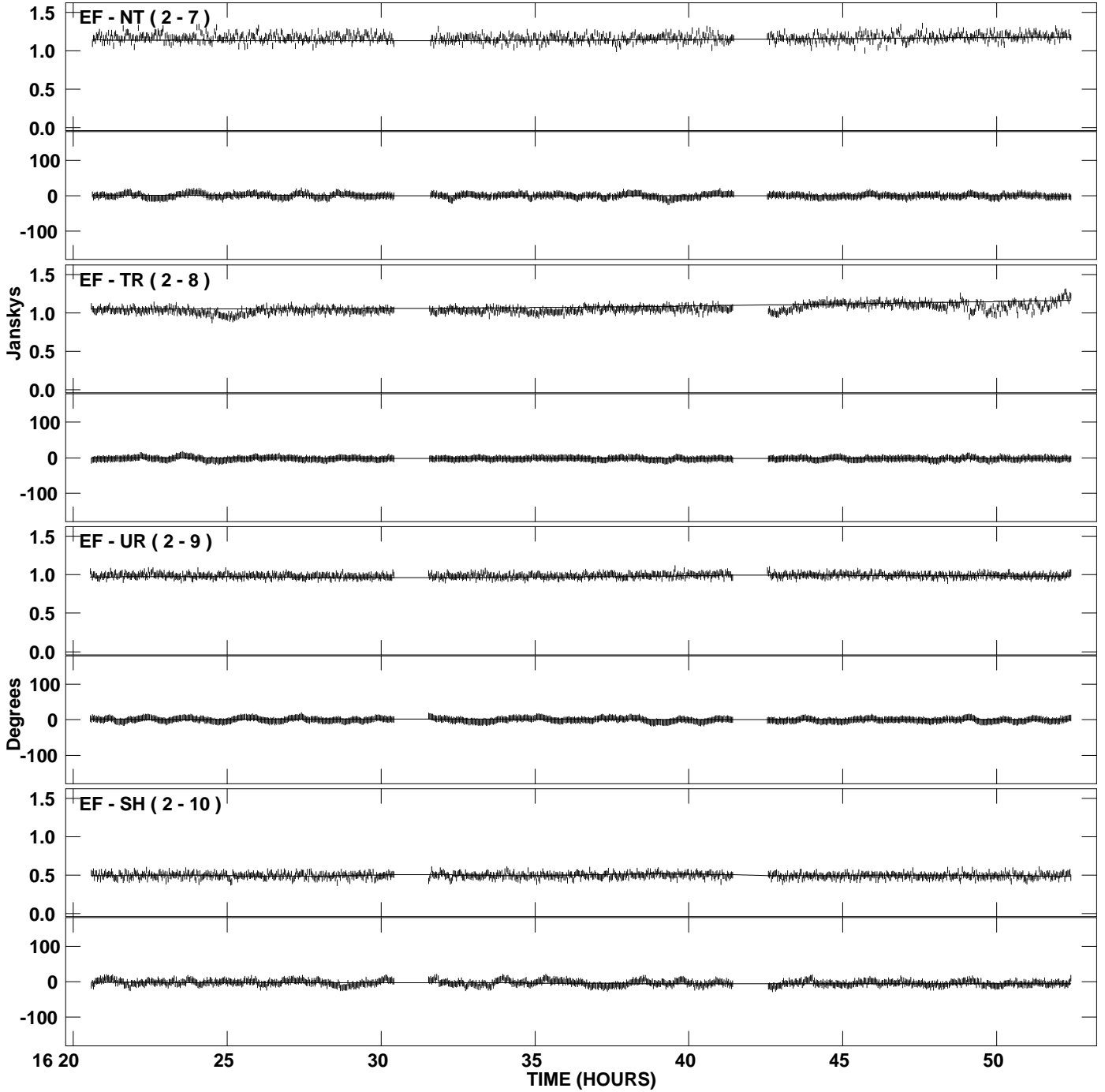


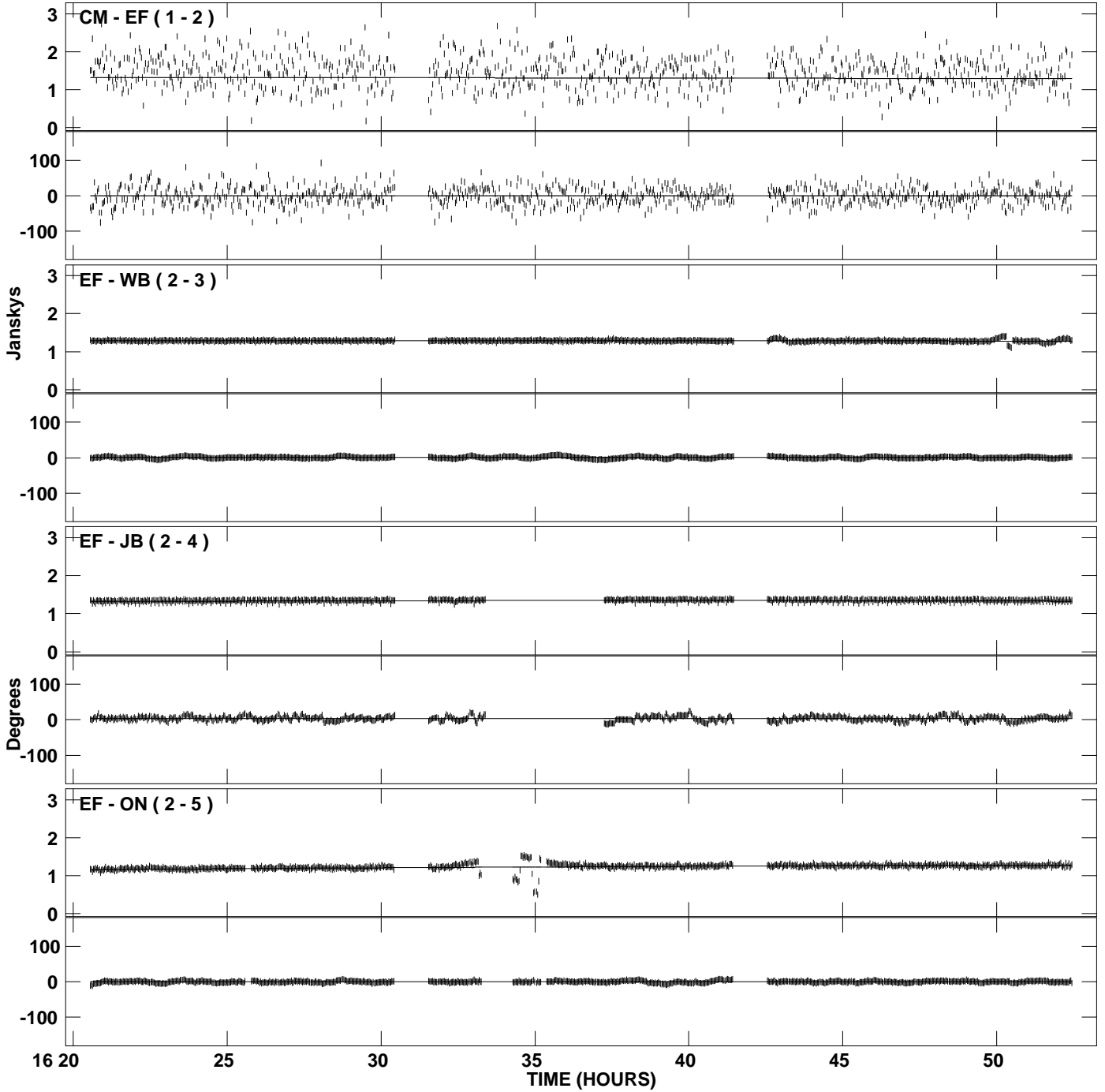
PLot file version 1 created 07-AUG-2009 17:38:36
Amplitude andPhase vs Time for OQ208.MULTI.1 CL # 3
IF 1 CHAN 1 STK LL of OQ208.ICL001.3



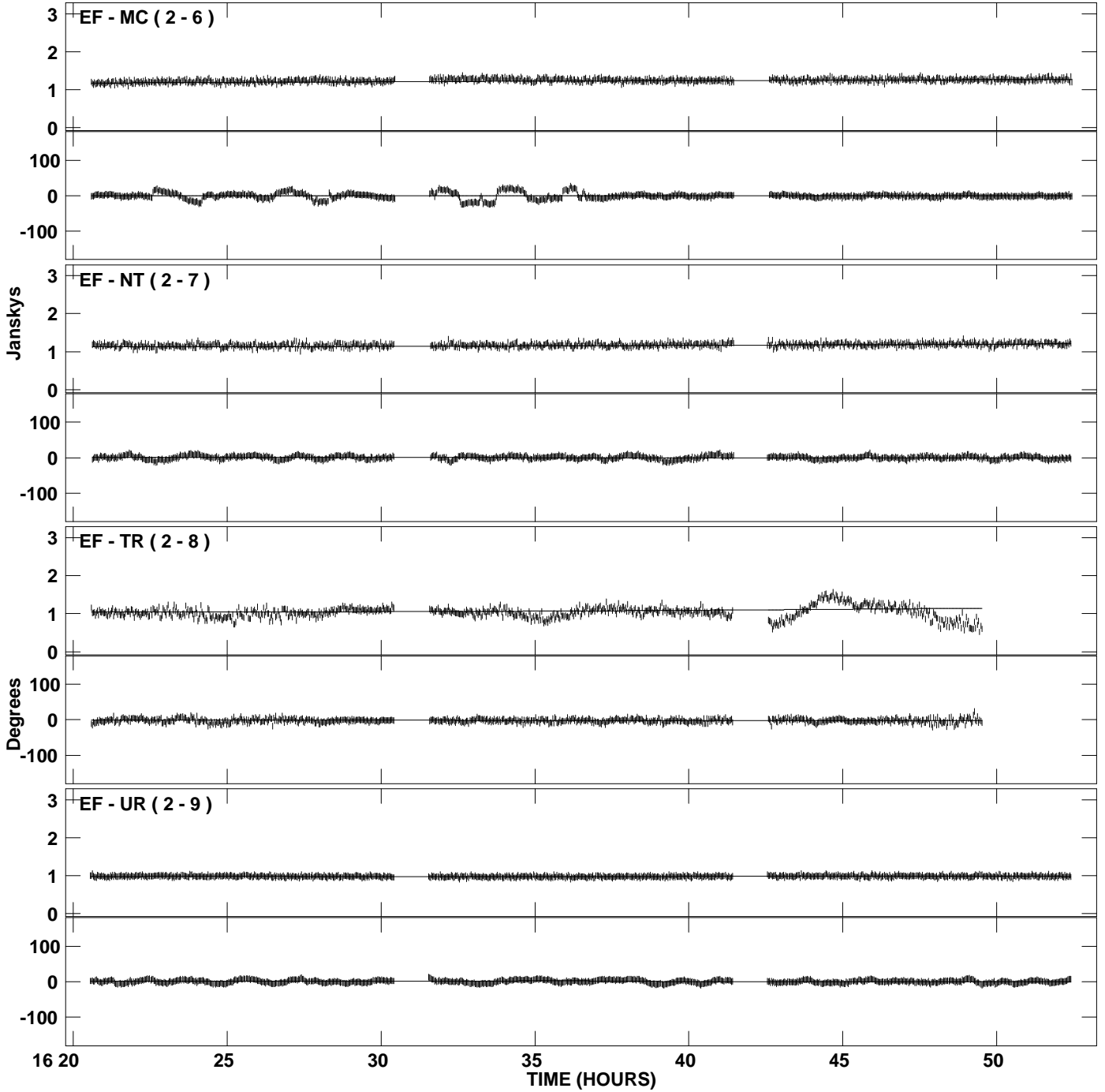
PLot file version 2 created 07-AUG-2009 17:38:36
Amplitude and Phase vs Time for OQ208.MULTI.1 CL # 3
IF 1 CHAN 1 STK LL of OQ208.ICL001.3



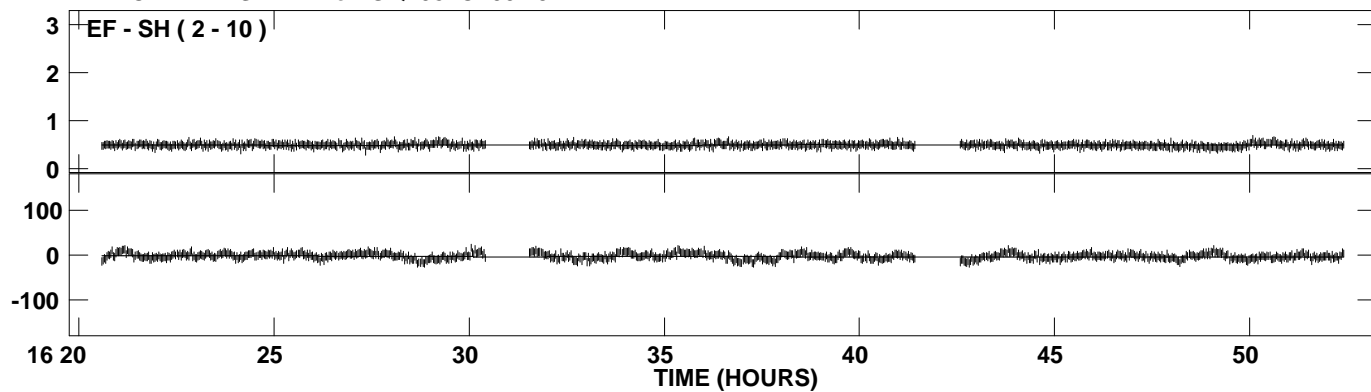
PLot file version 3 created 07-AUG-2009 17:38:38
Amplitude and Phase vs Time for OQ208.MULTI.1 CL # 3
IF 2 CHAN 1 STK LL of OQ208.ICL001.3



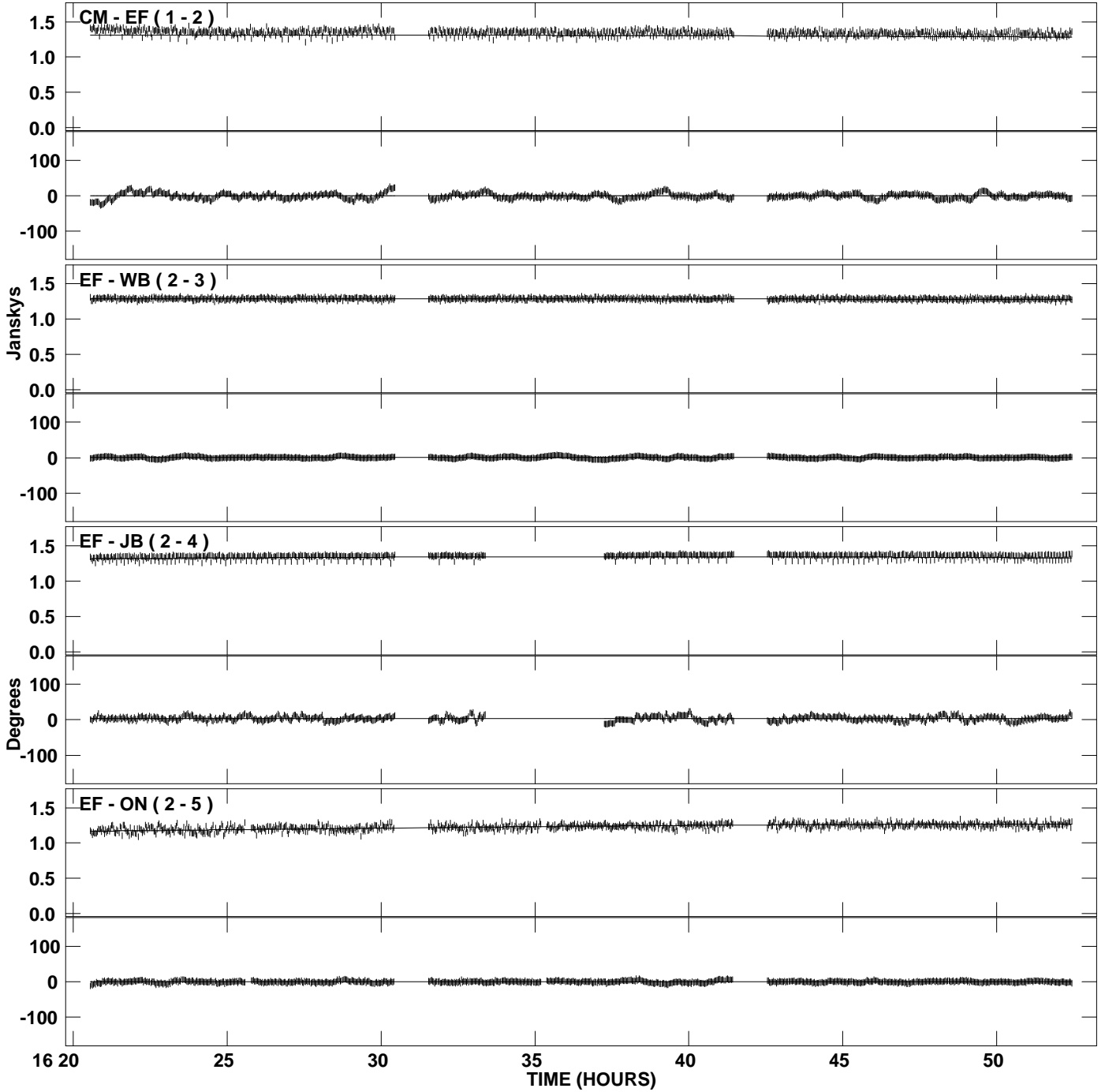
PLot file version 4 created 07-AUG-2009 17:38:38
Amplitude and Phase vs Time for OQ208.MULTI.1 CL # 3
IF 2 CHAN 1 STK LL of OQ208.ICL001.3



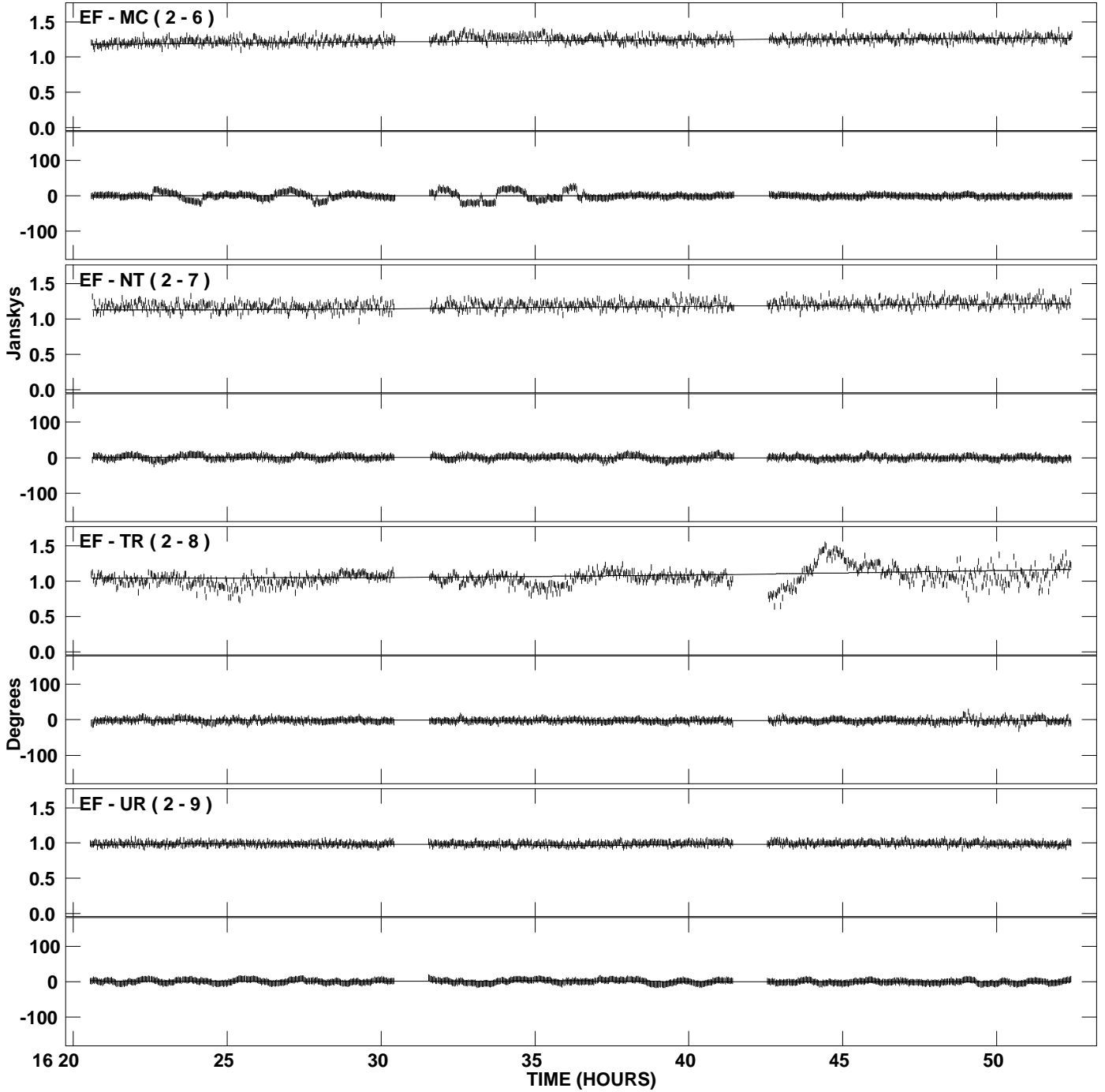
PLot file version 5 created 07-AUG-2009 17:38:38
Amplitude andPhase vs Time for OQ208.MULTI.1 CL # 3
IF 2 CHAN 1 STK LL of OQ208.ICL001.3



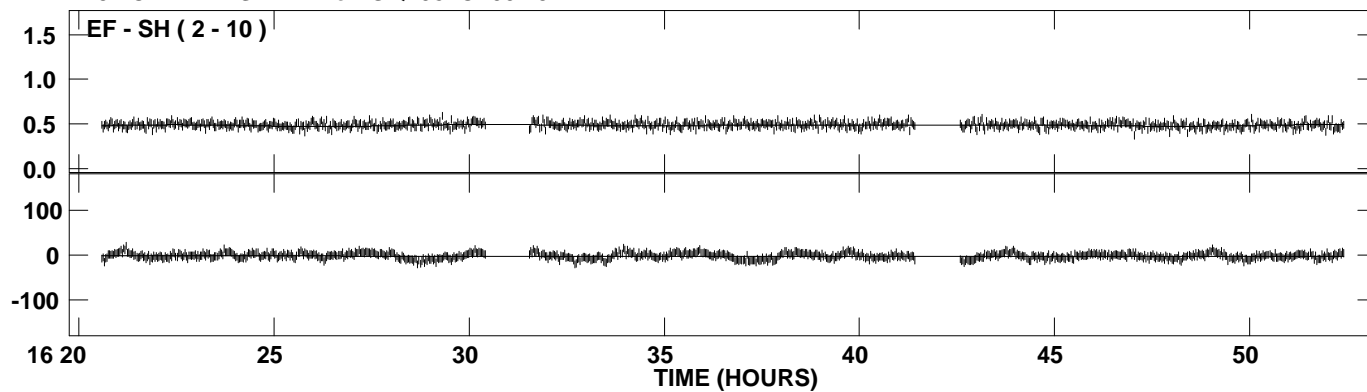
PLot file version 6 created 07-AUG-2009 17:38:39
Amplitude and Phase vs Time for OQ208.MULTI.1 CL # 3
IF 3 CHAN 1 STK LL of OQ208.ICL001.3



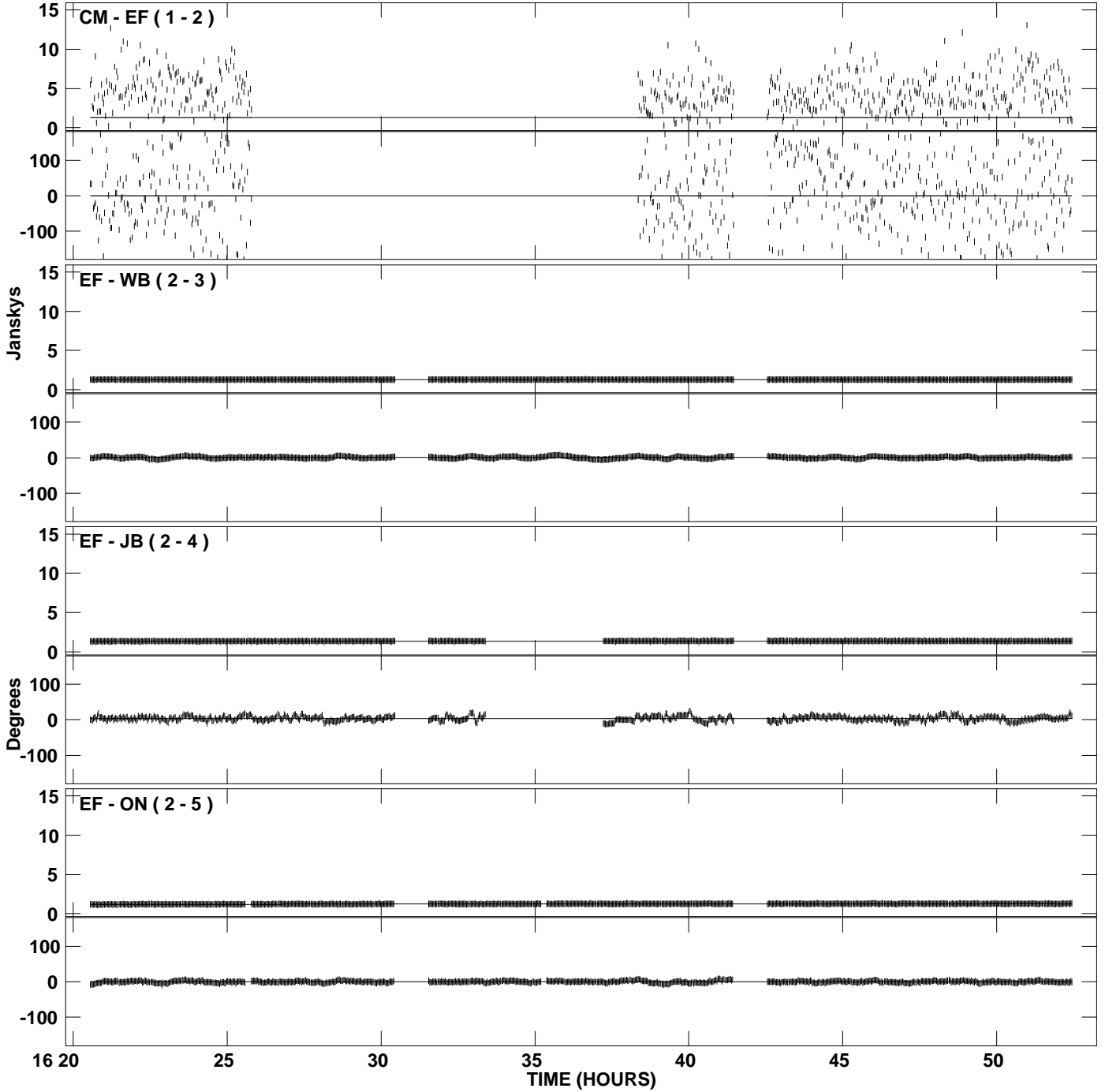
PLot file version 7 created 07-AUG-2009 17:38:39
Amplitude and Phase vs Time for OQ208.MULTI.1 CL # 3
IF 3 CHAN 1 STK LL of OQ208.ICL001.3



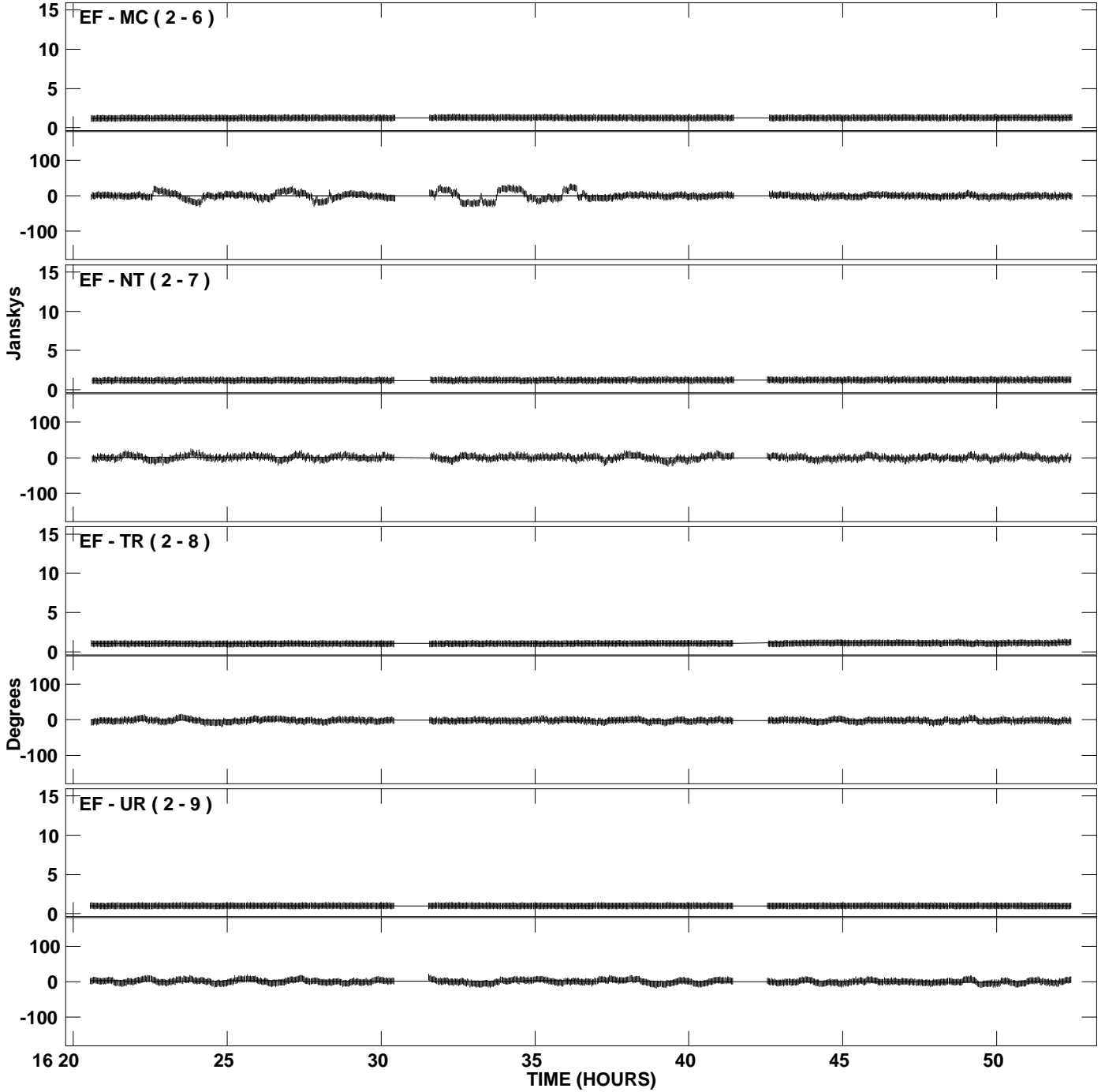
PLot file version 8 created 07-AUG-2009 17:38:39
Amplitude andPhase vs Time for OQ208.MULTI.1 CL # 3
IF 3 CHAN 1 STK LL of OQ208.ICL001.3



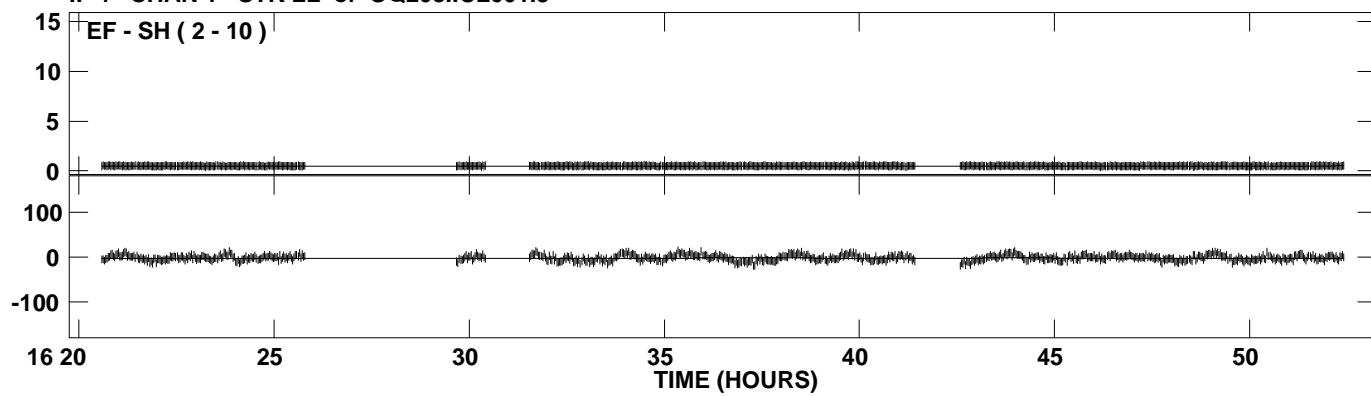
PLot file version 9 created 07-AUG-2009 17:38:39
Amplitude and Phase vs Time for OQ208.MULTI.1 CL # 3
IF 4 CHAN 1 STK LL of OQ208.ICL001.3



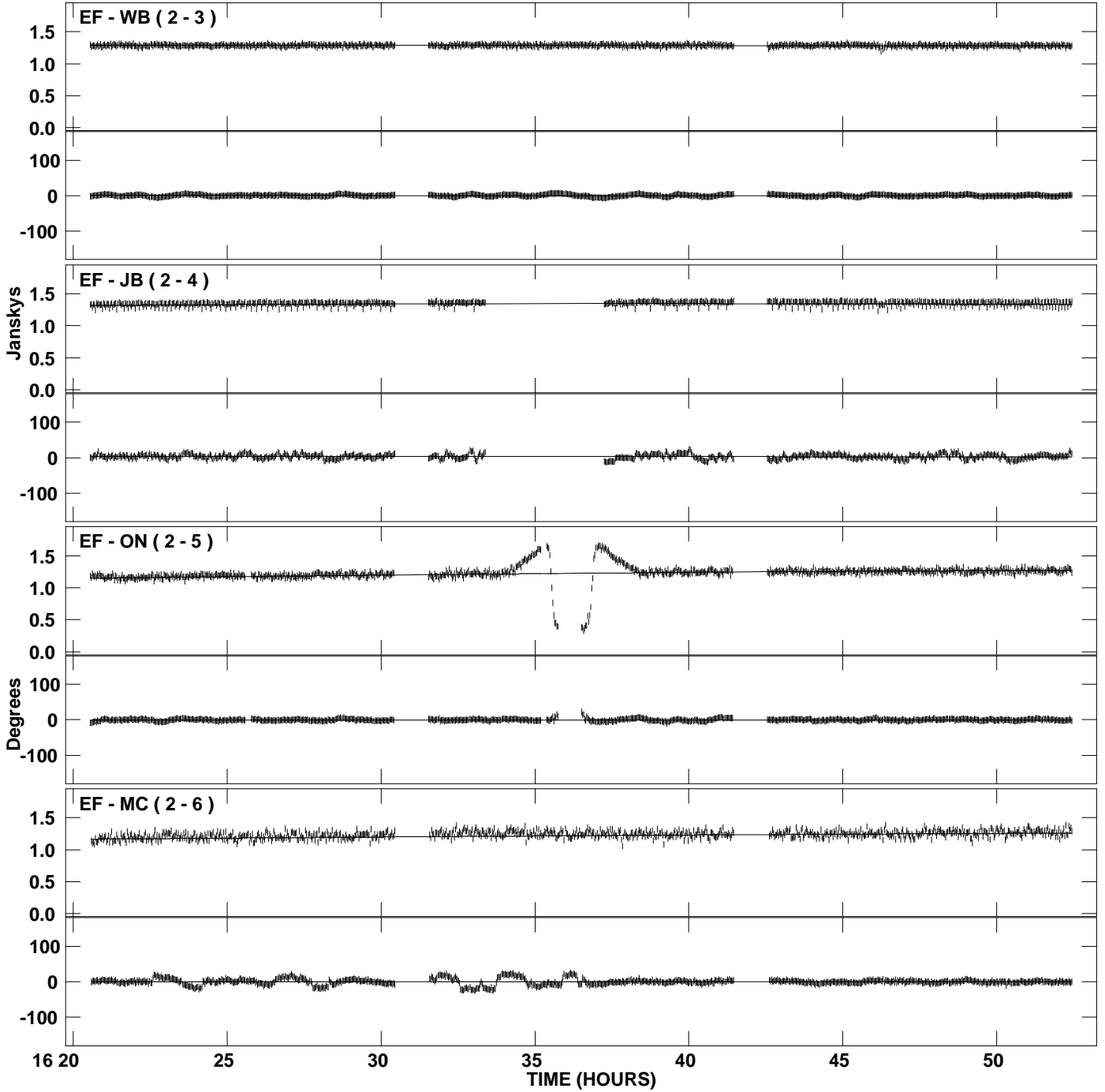
PLot file version 10 created 07-AUG-2009 17:38:39
Amplitude and Phase vs Time for OQ208.MULTI.1 CL # 3
IF 4 CHAN 1 STK LL of OQ208.ICL001.3



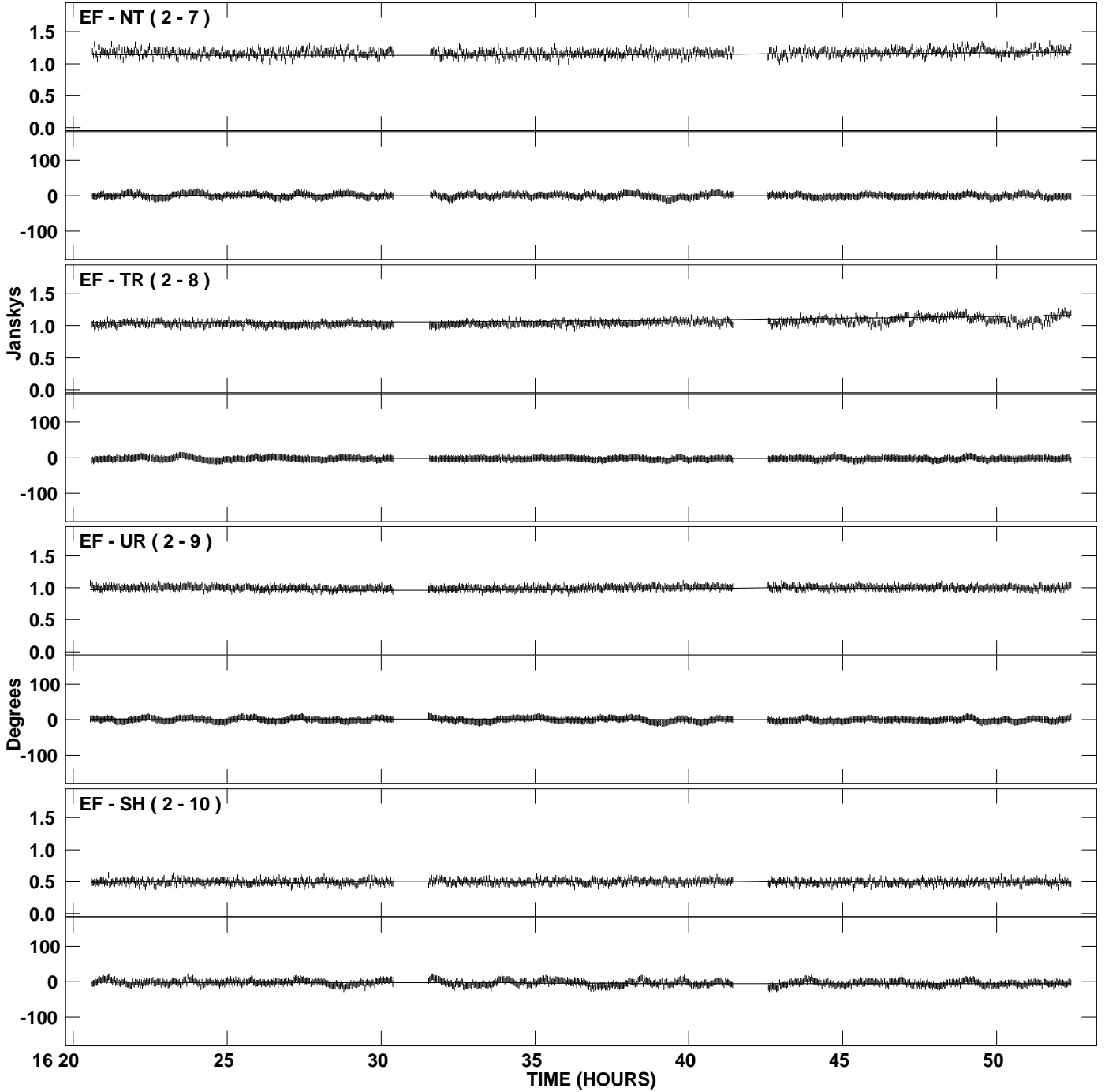
PLot file version 11 created 07-AUG-2009 17:38:39
Amplitude andPhase vs Time for OQ208.MULTI.1 CL # 3
IF 4 CHAN 1 STK LL of OQ208.ICL001.3



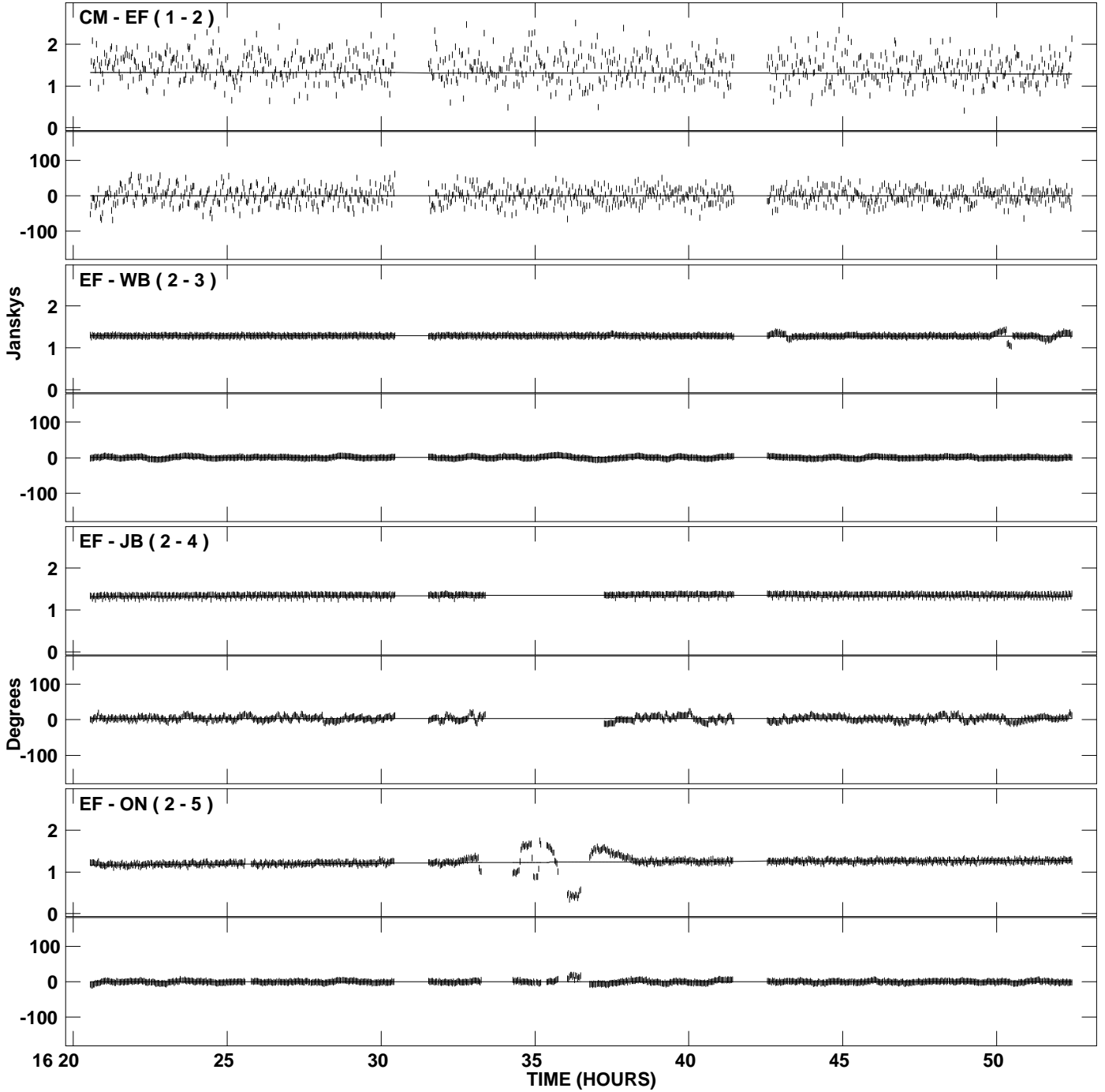
PLot file version 12 created 07-AUG-2009 17:38:40
Amplitude and Phase vs Time for OQ208.MULTI.1 CL # 3
IF 1 CHAN 1 STK RR of OQ208.ICL001.3



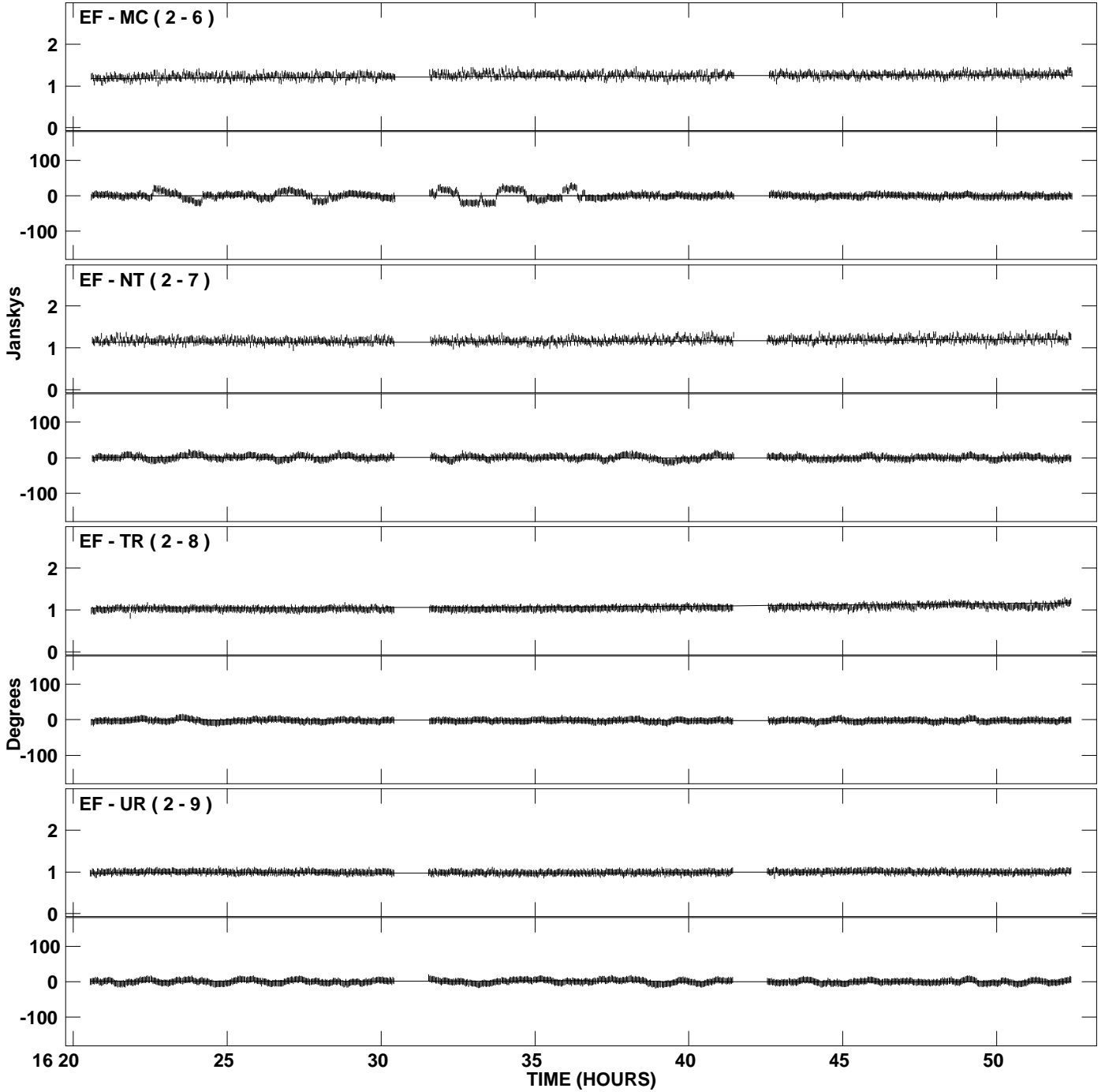
PLot file version 13 created 07-AUG-2009 17:38:40
Amplitude and Phase vs Time for OQ208.MULTI.1 CL # 3
IF 1 CHAN 1 STK RR of OQ208.ICL001.3



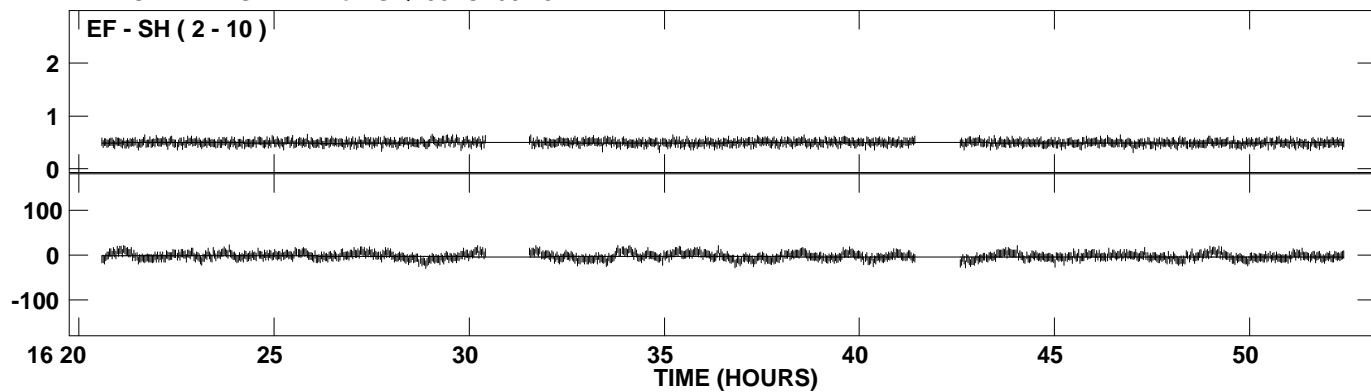
PLot file version 14 created 07-AUG-2009 17:38:40
Amplitude and Phase vs Time for OQ208.MULTI.1 CL # 3
IF 2 CHAN 1 STK RR of OQ208.ICL001.3



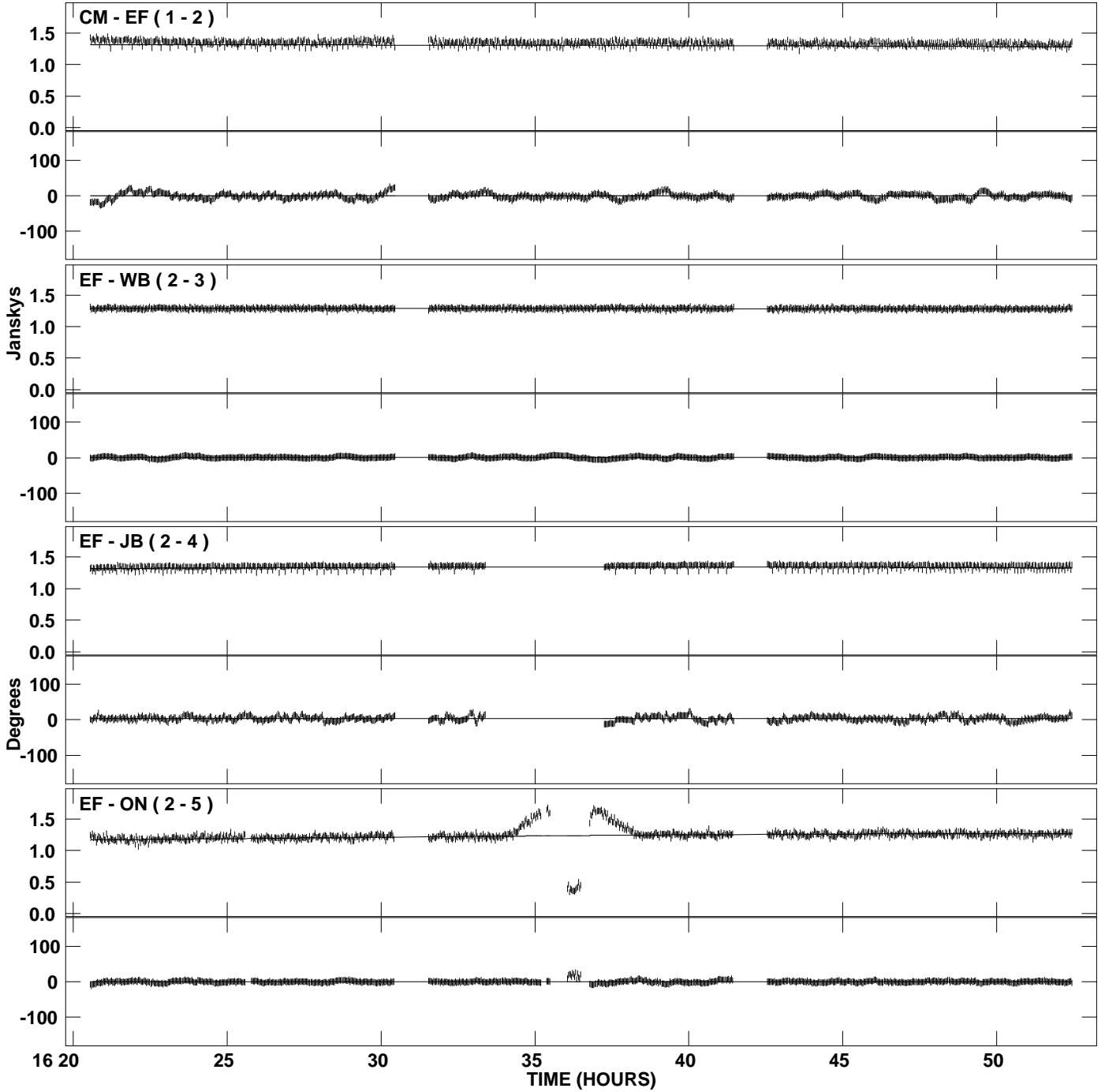
PLot file version 15 created 07-AUG-2009 17:38:40
Amplitude and Phase vs Time for OQ208.MULTI.1 CL # 3
IF 2 CHAN 1 STK RR of OQ208.ICL001.3



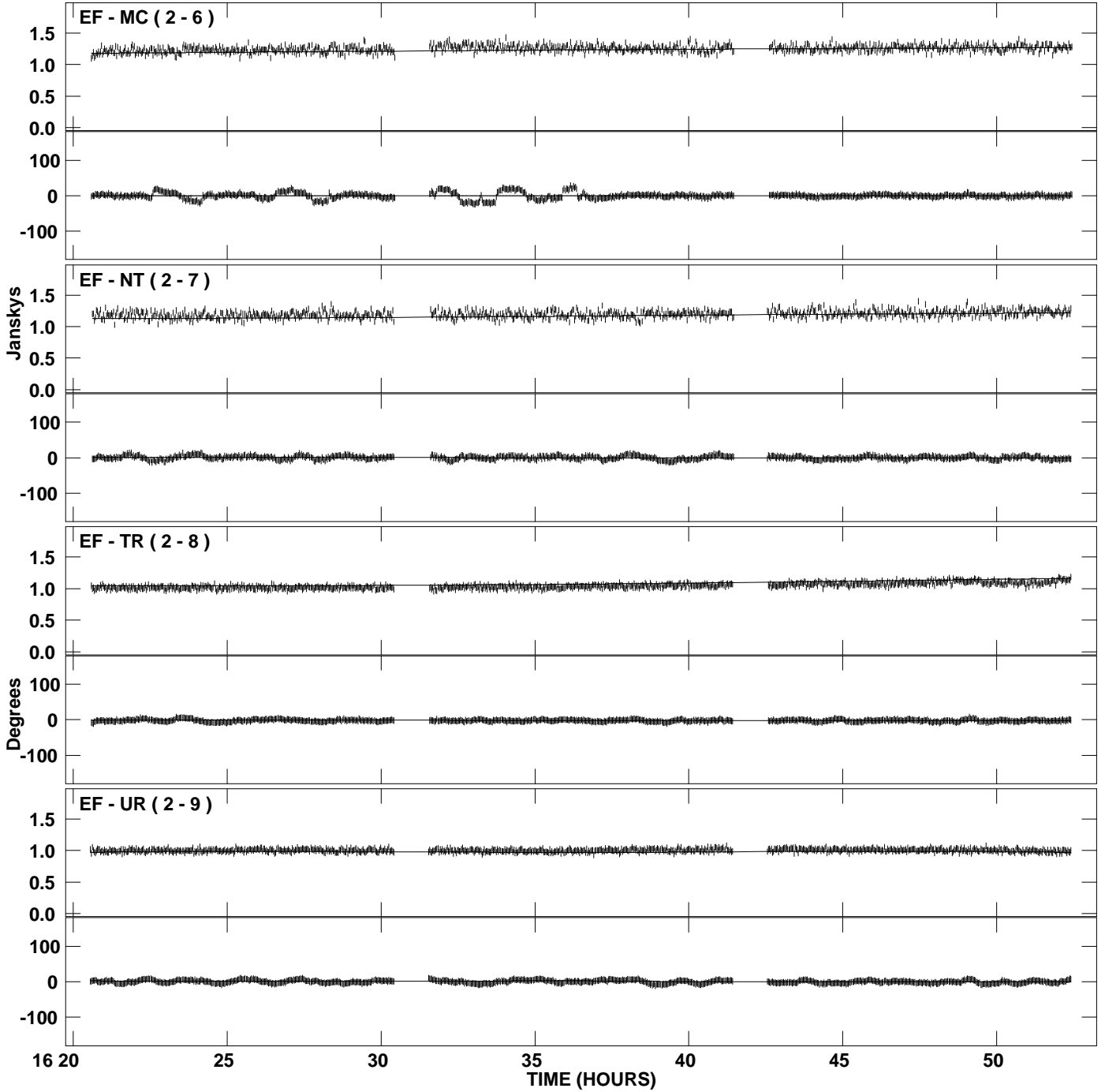
PLot file version 16 created 07-AUG-2009 17:38:40
Amplitude andPhase vs Time for OQ208.MULTI.1 CL # 3
IF 2 CHAN 1 STK RR of OQ208.ICL001.3



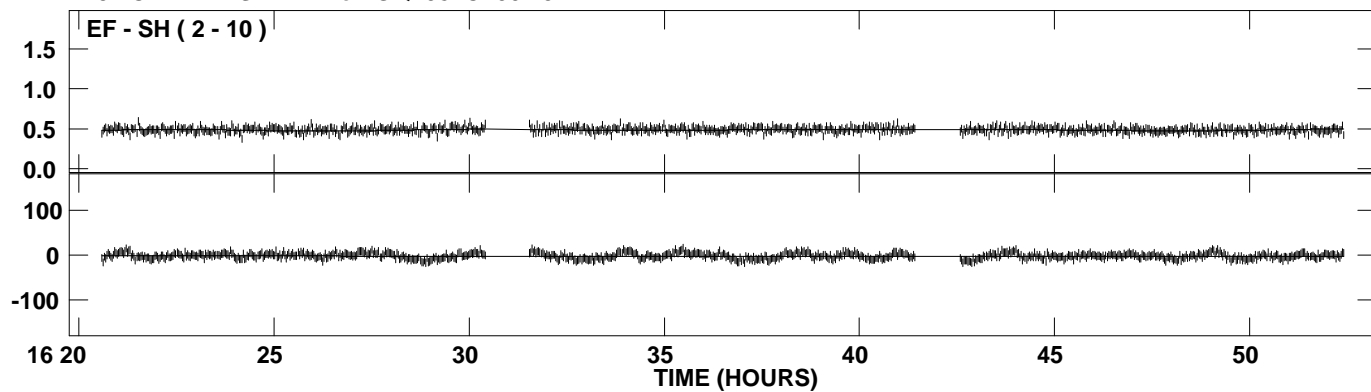
PLot file version 17 created 07-AUG-2009 17:38:40
Amplitude and Phase vs Time for OQ208.MULTI.1 CL # 3
IF 3 CHAN 1 STK RR of OQ208.ICL001.3



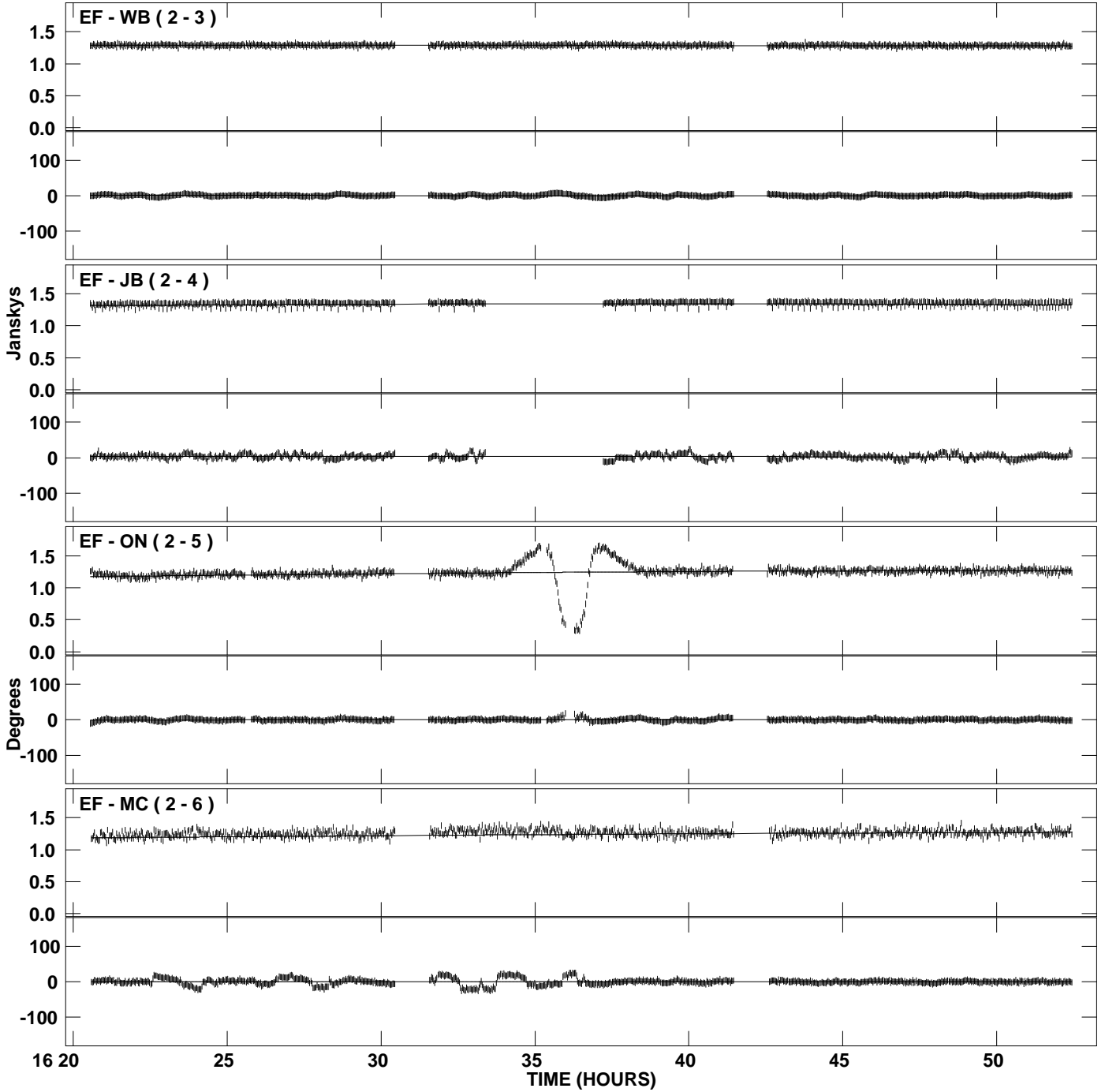
PLot file version 18 created 07-AUG-2009 17:38:40
Amplitude and Phase vs Time for OQ208.MULTI.1 CL # 3
IF 3 CHAN 1 STK RR of OQ208.ICL001.3



PLot file version 19 created 07-AUG-2009 17:38:40
Amplitude andPhase vs Time for OQ208.MULTI.1 CL # 3
IF 3 CHAN 1 STK RR of OQ208.ICL001.3



PLot file version 20 created 07-AUG-2009 17:38:41
Amplitude andPhase vs Time for OQ208.MULTI.1 CL # 3
IF 4 CHAN 1 STK RR of OQ208.ICL001.3



PLot file version 21 created 07-AUG-2009 17:38:41
Amplitude and Phase vs Time for OQ208.MULTI.1 CL # 3
IF 4 CHAN 1 STK RR of OQ208.ICL001.3

