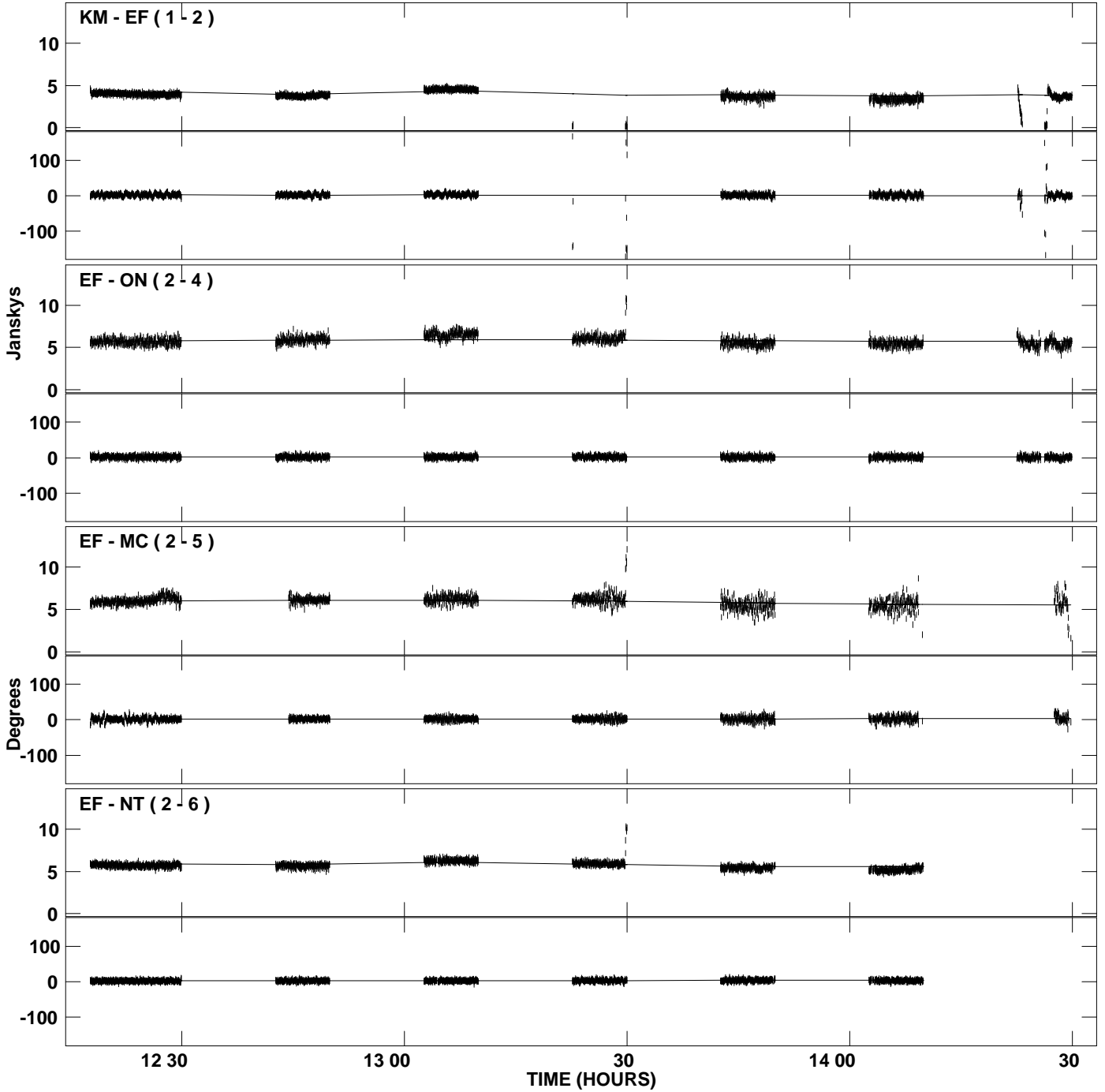
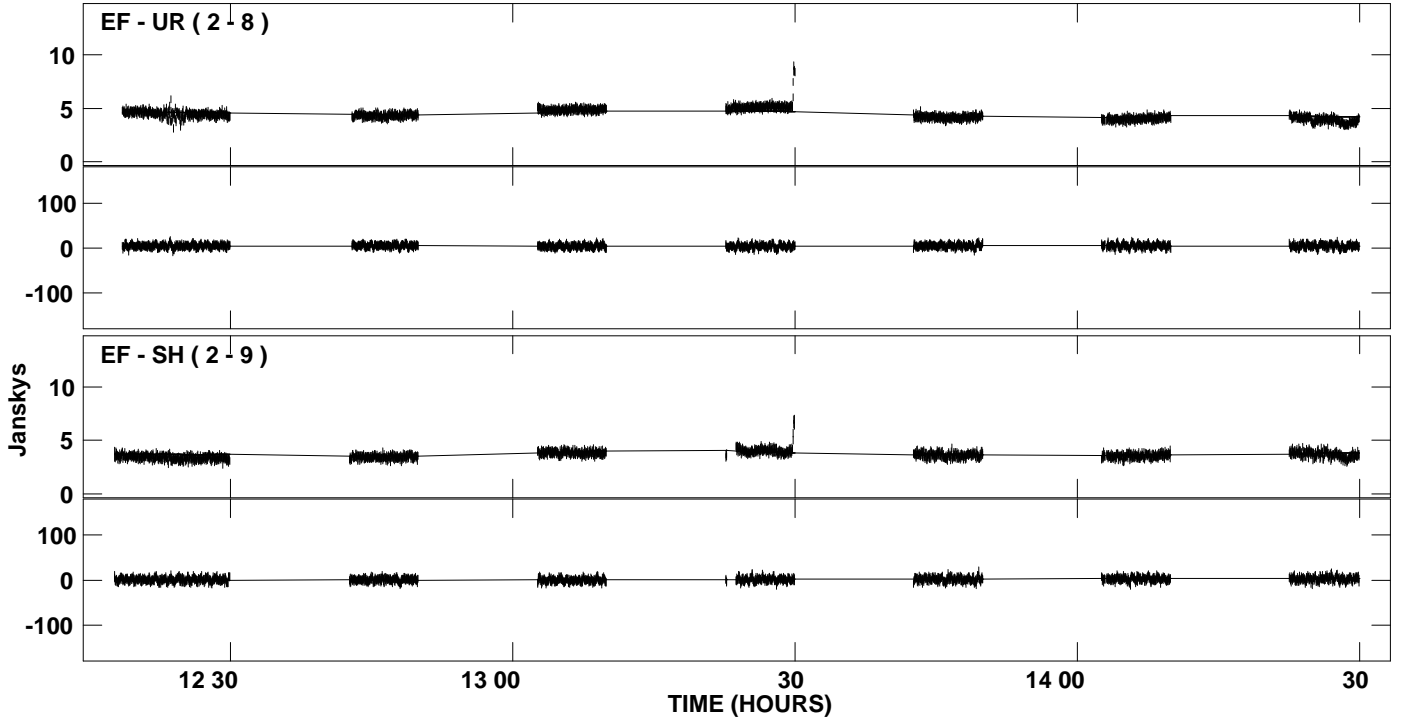


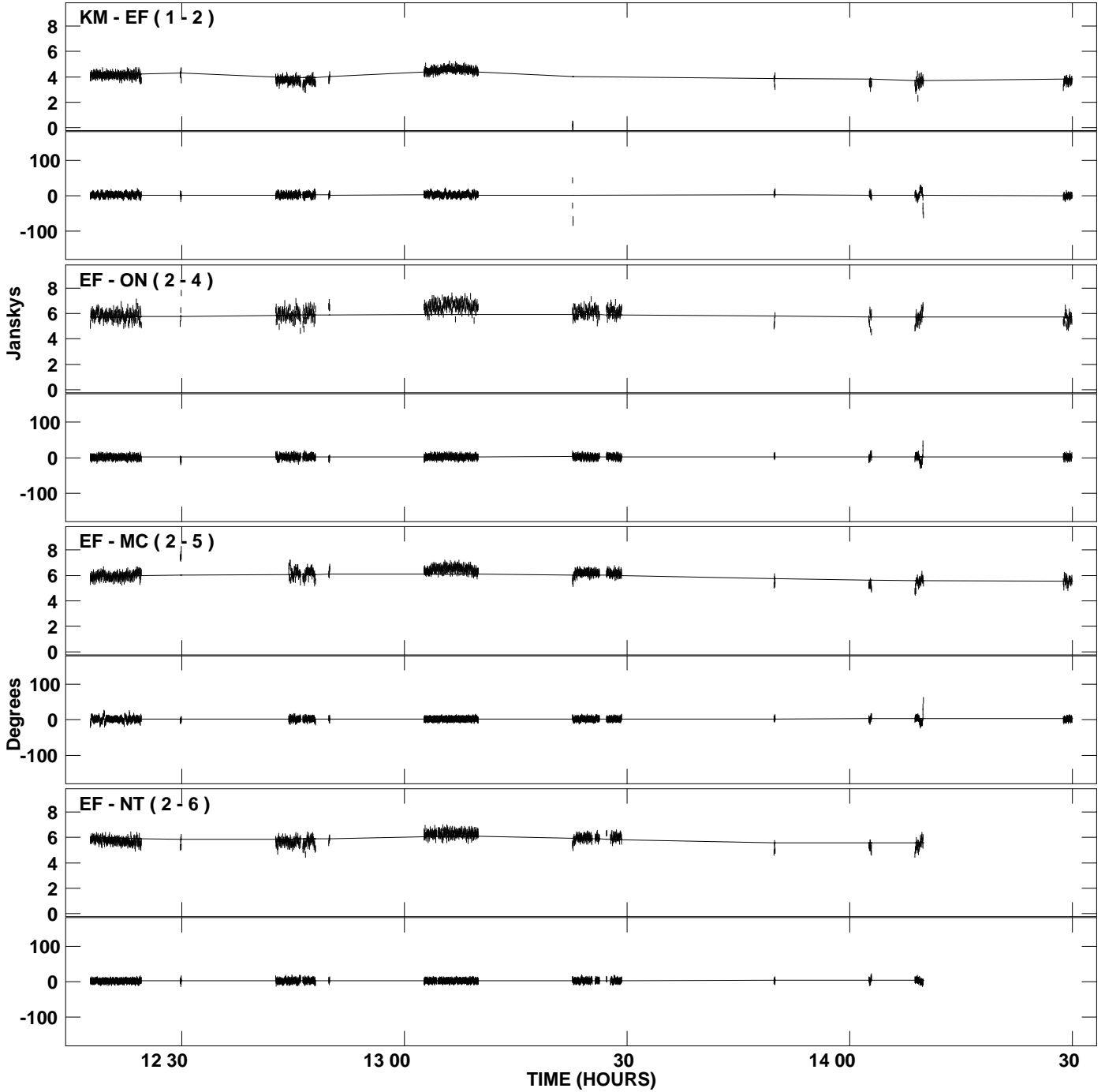
PLot file version 1 created 07-SEP-2009 10:40:00
Amplitude and Phase vs Time for 4C39.25.MULTI.1 CL # 3
IF 1 CHAN 1 STK RR of 4C39.25.ICL001.3



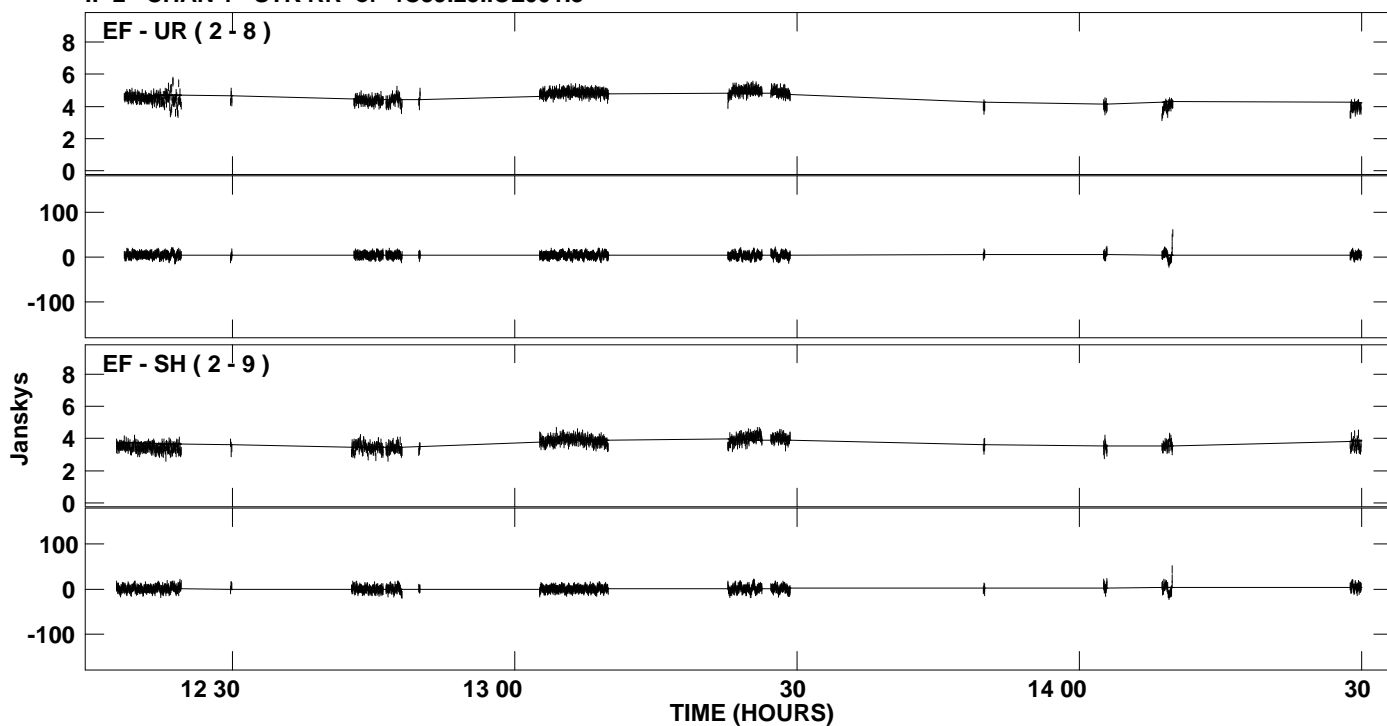
PLot file version 2 created 07-SEP-2009 10:40:00
Amplitude andPhase vs Time for 4C39.25.MULTI.1 CL # 3
IF 1 CHAN 1 STK RR of 4C39.25.ICL001.3



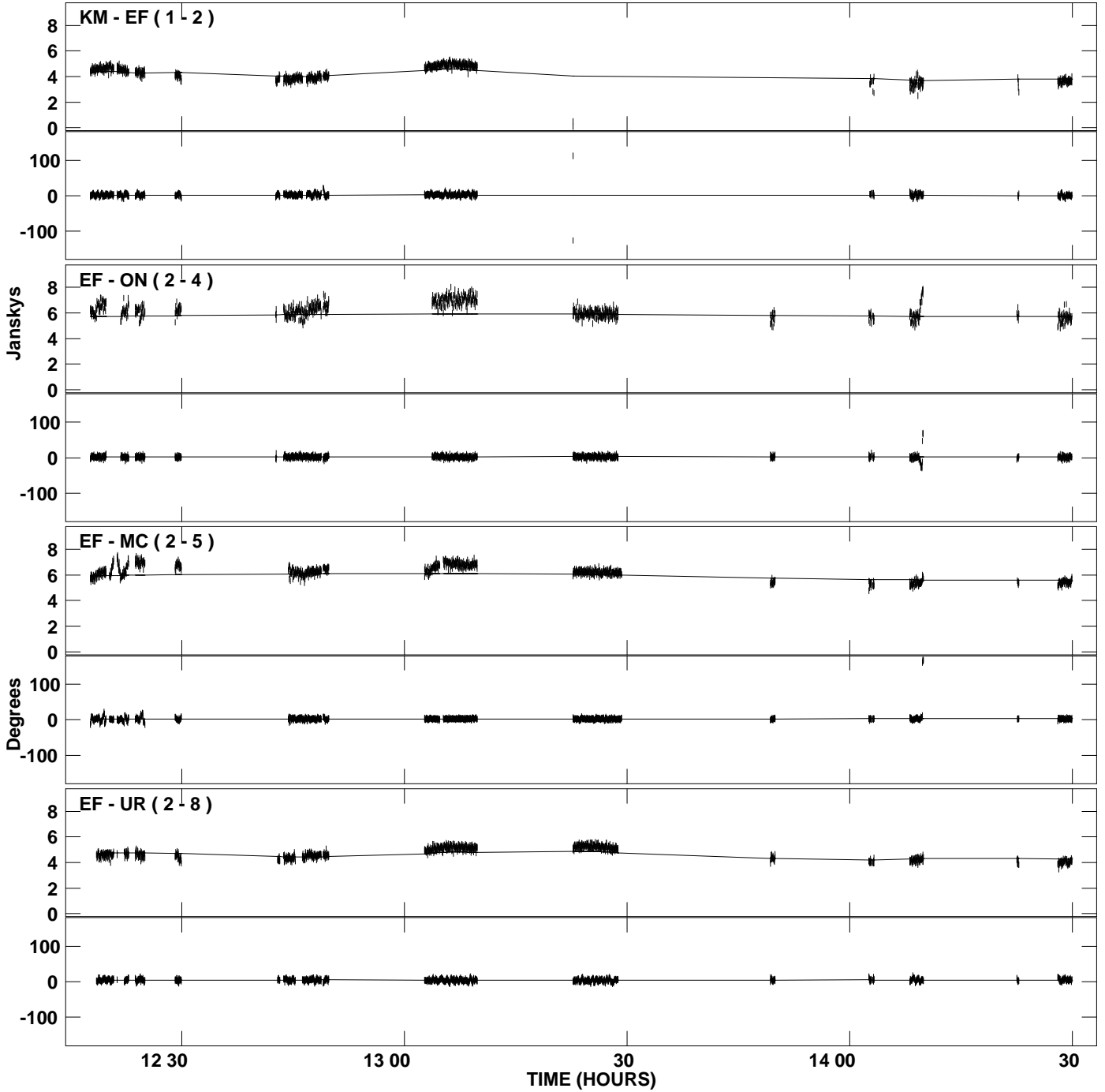
PLot file version 3 created 07-SEP-2009 10:40:02
Amplitude and Phase vs Time for 4C39.25.MULTI.1 CL # 3
IF 2 CHAN 1 STK RR of 4C39.25.ICL001.3



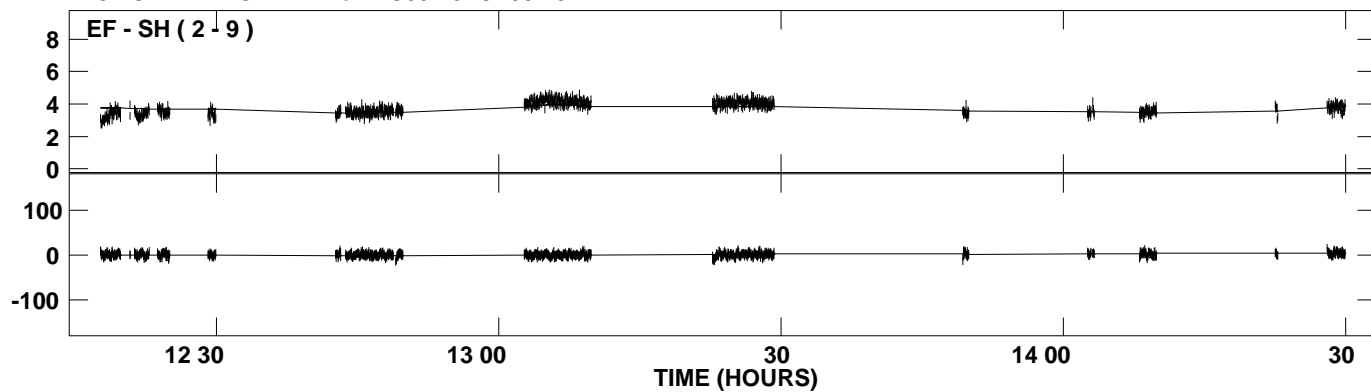
PLot file version 4 created 07-SEP-2009 10:40:02
Amplitude and Phase vs Time for 4C39.25.MULTI.1 CL # 3
IF 2 CHAN 1 STK RR of 4C39.25.ICL001.3



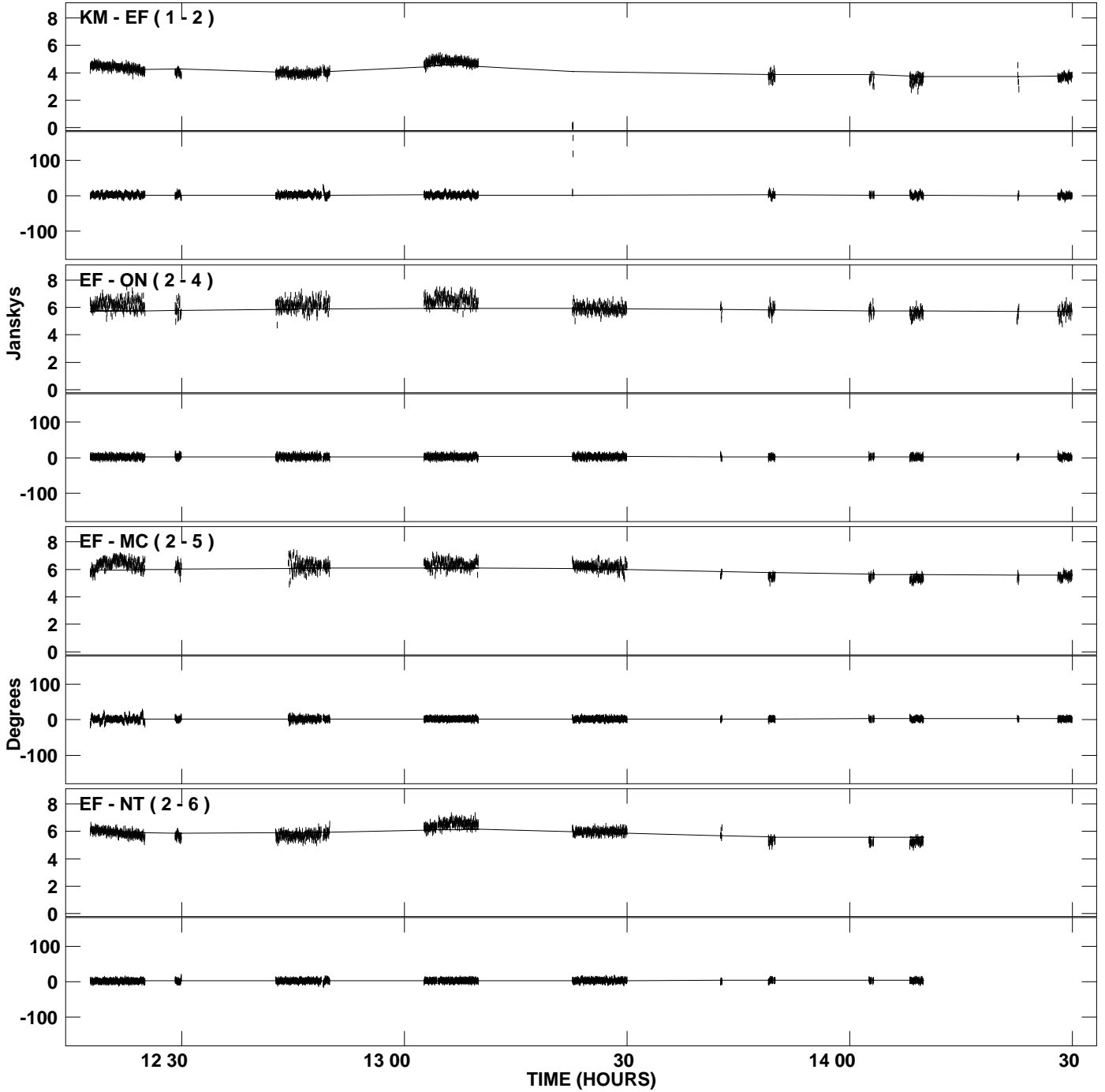
PLot file version 5 created 07-SEP-2009 10:40:02
Amplitude and Phase vs Time for 4C39.25.MULTI.1 CL # 3
IF 3 CHAN 1 STK RR of 4C39.25.ICL001.3



PLot file version 6 created 07-SEP-2009 10:40:02
Amplitude andPhase vs Time for 4C39.25.MULTI.1 CL # 3
IF 3 CHAN 1 STK RR of 4C39.25.ICL001.3



PLot file version 7 created 07-SEP-2009 10:40:03
Amplitude and Phase vs Time for 4C39.25.MULTI.1 CL # 3
IF 4 CHAN 1 STK RR of 4C39.25.ICL001.3



PLot file version 8 created 07-SEP-2009 10:40:03
Amplitude and Phase vs Time for 4C39.25.MULTI.1 CL # 3
IF 4 CHAN 1 STK RR of 4C39.25.ICL001.3

