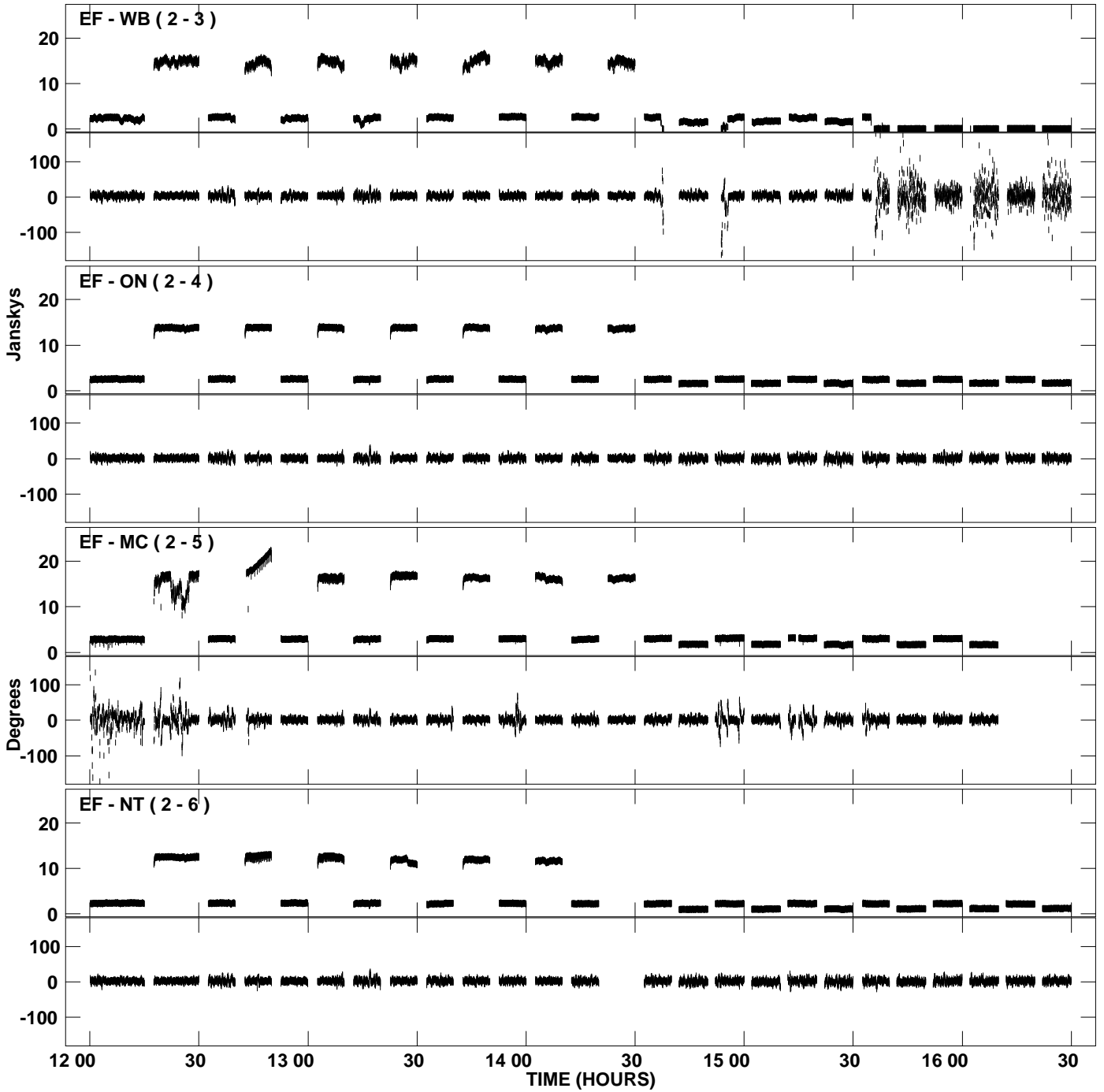
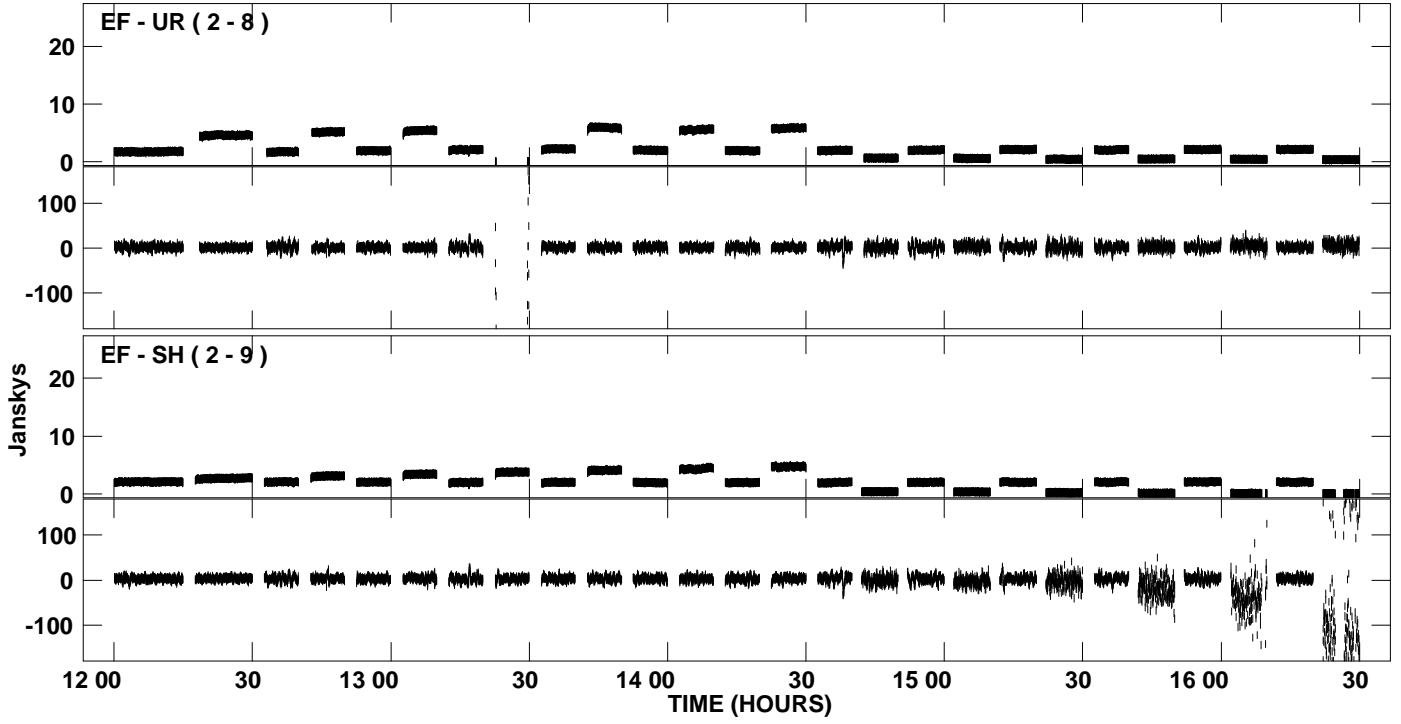


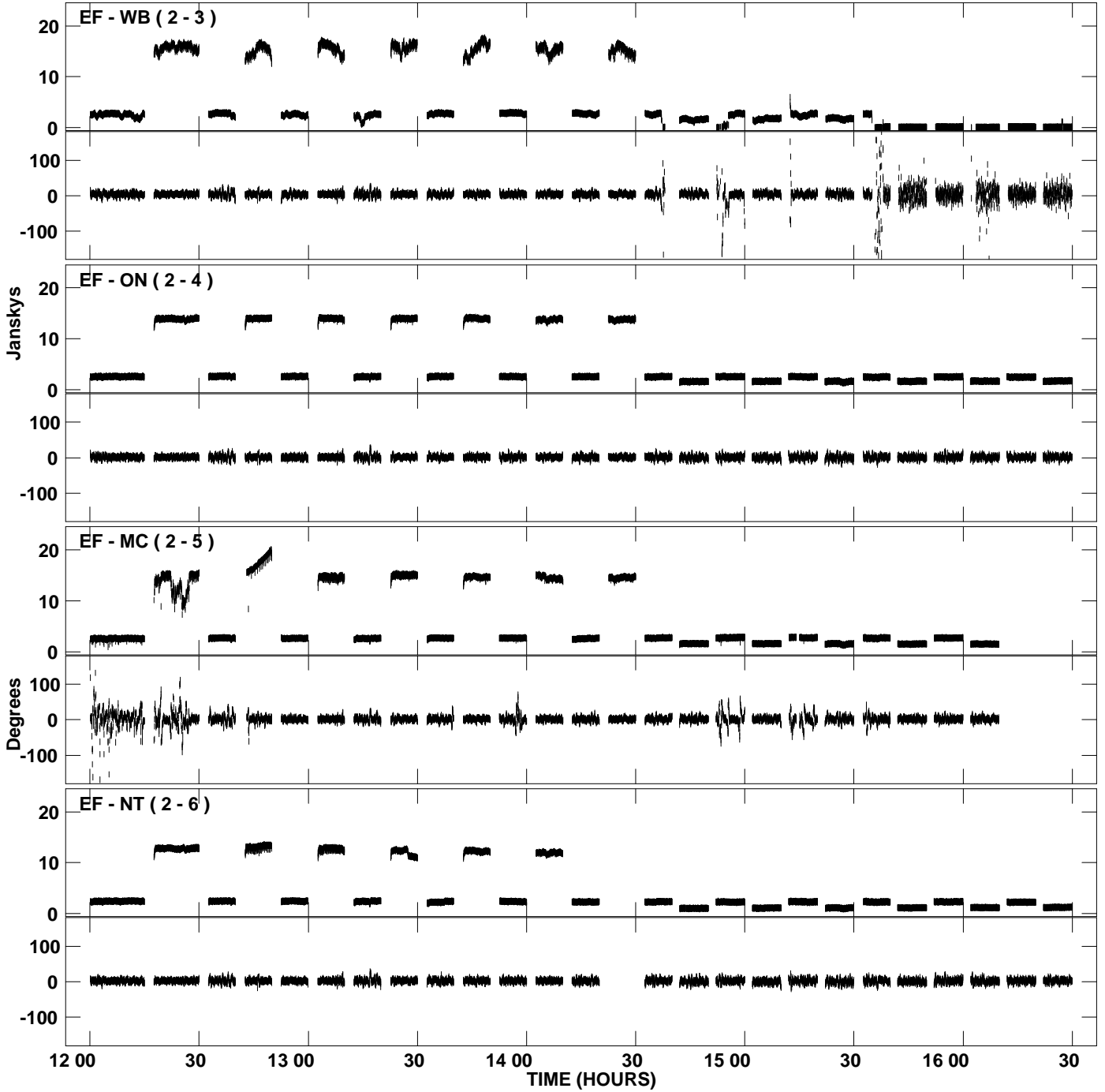
PLot file version 1 created 07-SEP-2009 12:08:59
Amplitude and Phase vs Time for N09SX1 2.UVDATA.1 Vect aver. CL # 3
IF 1 CHAN 1 - 16 STK RR



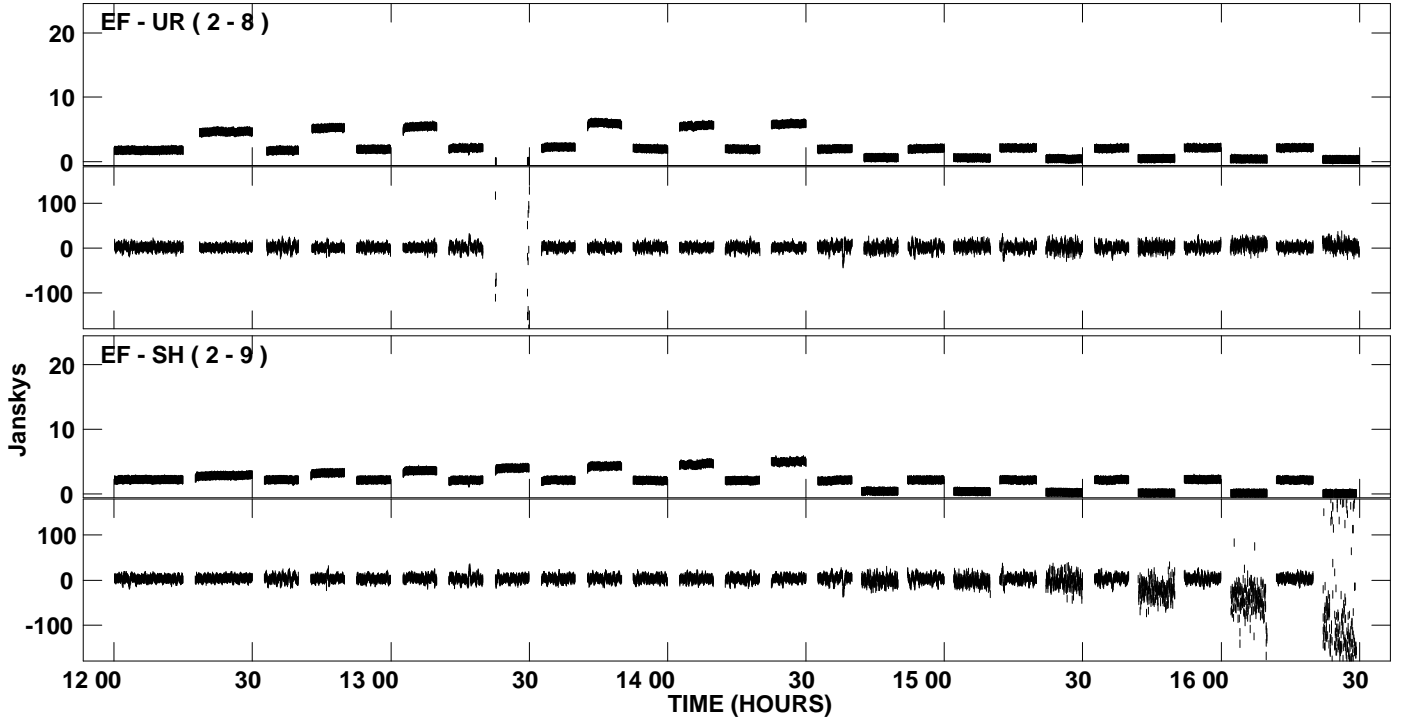
PLot file version 2 created 07-SEP-2009 12:08:59
Amplitude and Phase vs Time for N09SX1 2.UVDATA.1 Vect aver. CL # 3
IF 1 CHAN 1 - 16 STK RR



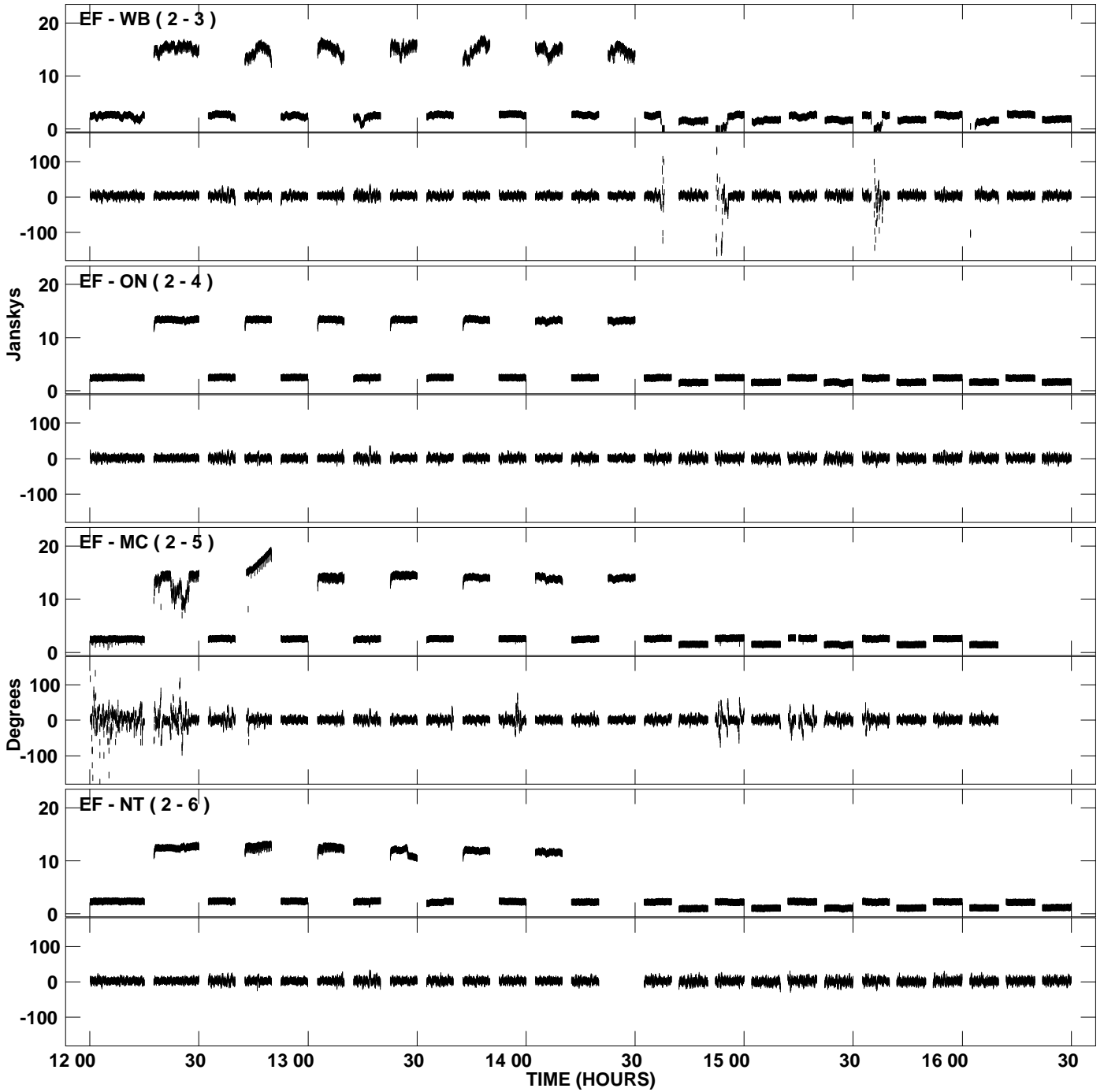
PLot file version 3 created 07-SEP-2009 12:09:00
Amplitude and Phase vs Time for N09SX1 2.UVDATA.1 Vect aver. CL # 3
IF 2 CHAN 1 - 16 STK RR



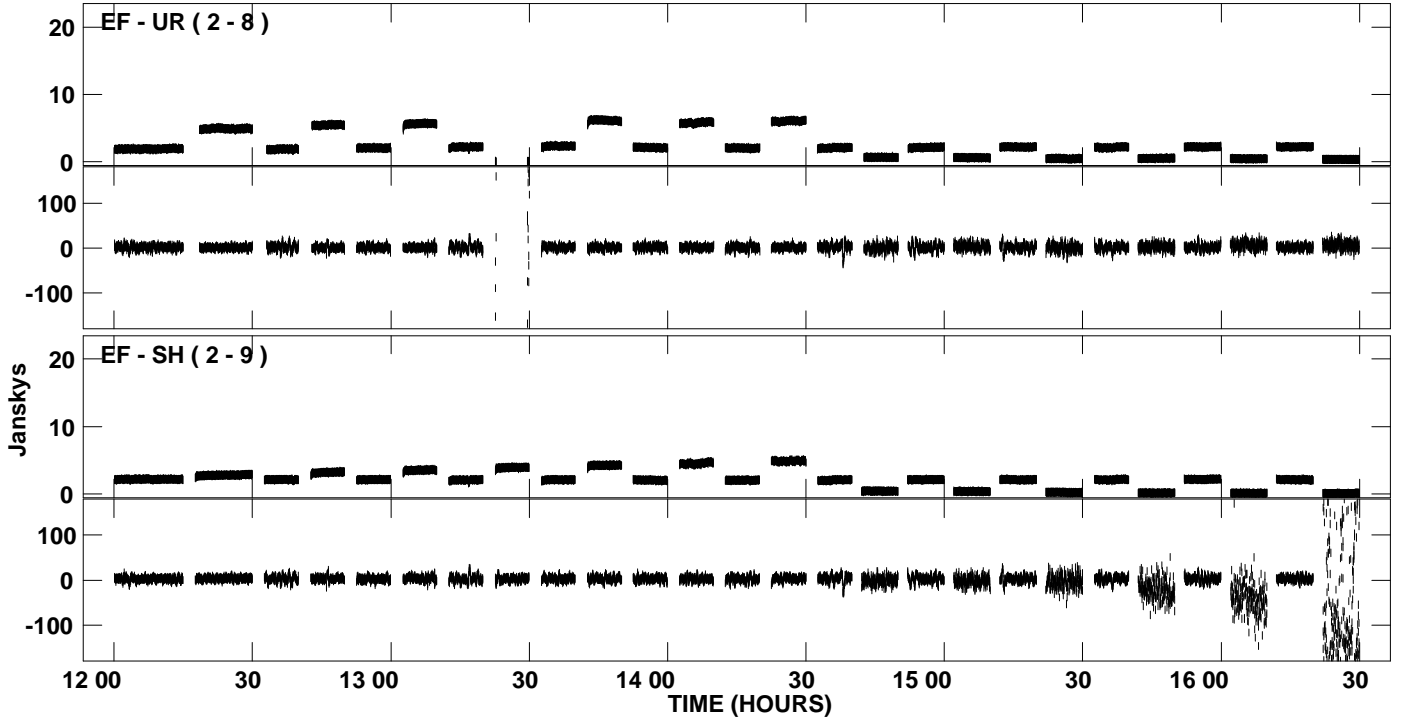
PLot file version 4 created 07-SEP-2009 12:09:00
Amplitude andPhase vs Time for N09SX1 2.UVDATA.1 Vect aver. CL # 3
IF 2 CHAN 1 - 16 STK RR



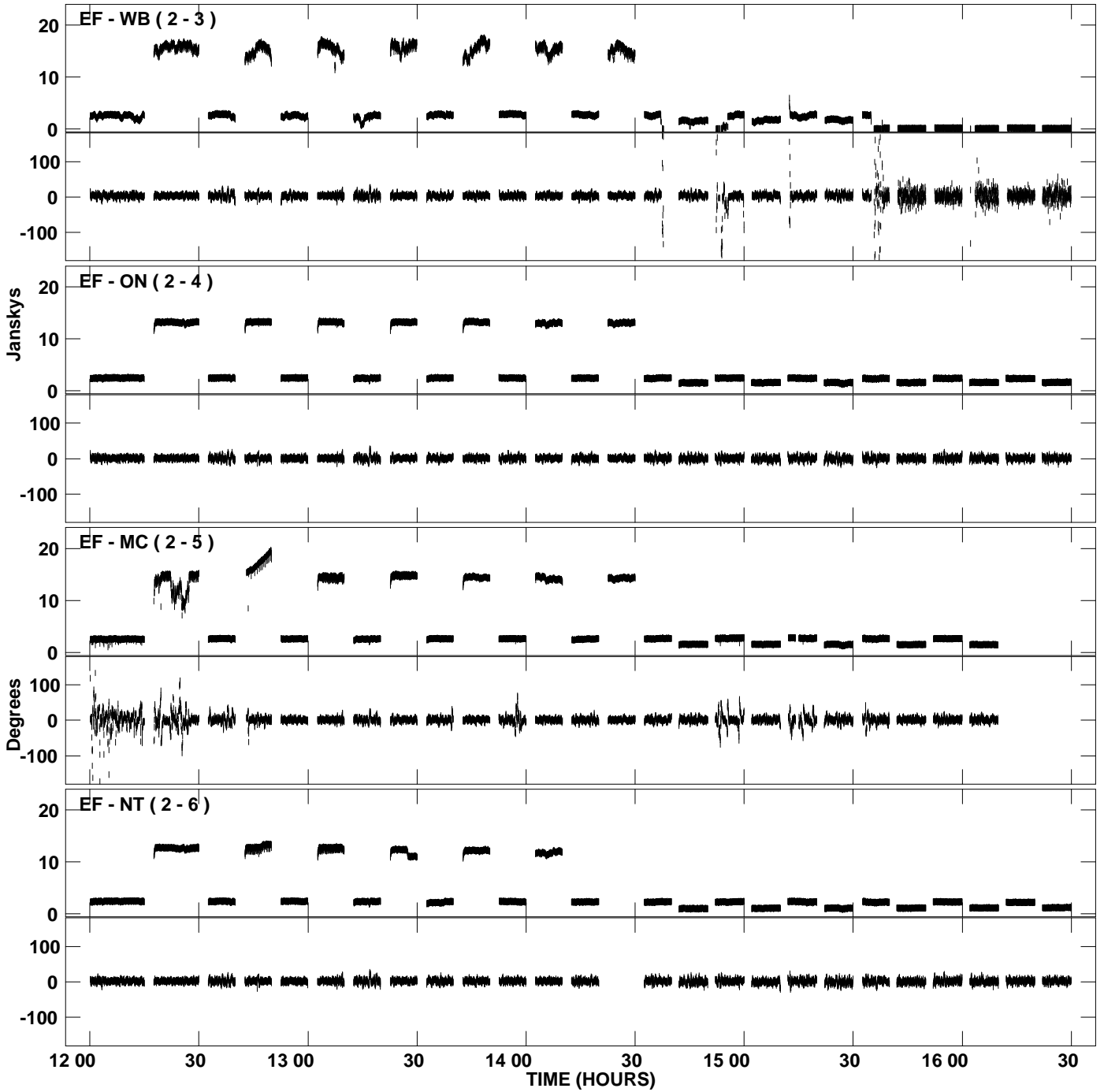
PLot file version 5 created 07-SEP-2009 12:09:01
Amplitude and Phase vs Time for N09SX1 2.UVDATA.1 Vect aver. CL # 3
IF 3 CHAN 1 - 16 STK RR



PLot file version 6 created 07-SEP-2009 12:09:01
Amplitude and Phase vs Time for N09SX1 2.UVDATA.1 Vect aver. CL # 3
IF 3 CHAN 1 - 16 STK RR



PLot file version 7 created 07-SEP-2009 12:09:02
Amplitude and Phase vs Time for N09SX1 2.UVDATA.1 Vect aver. CL # 3
IF 4 CHAN 1 - 16 STK RR



PLot file version 8 created 07-SEP-2009 12:09:02
Amplitude and Phase vs Time for N09SX1 2.UVDATA.1 Vect aver. CL # 3
IF 4 CHAN 1 - 16 STK RR

