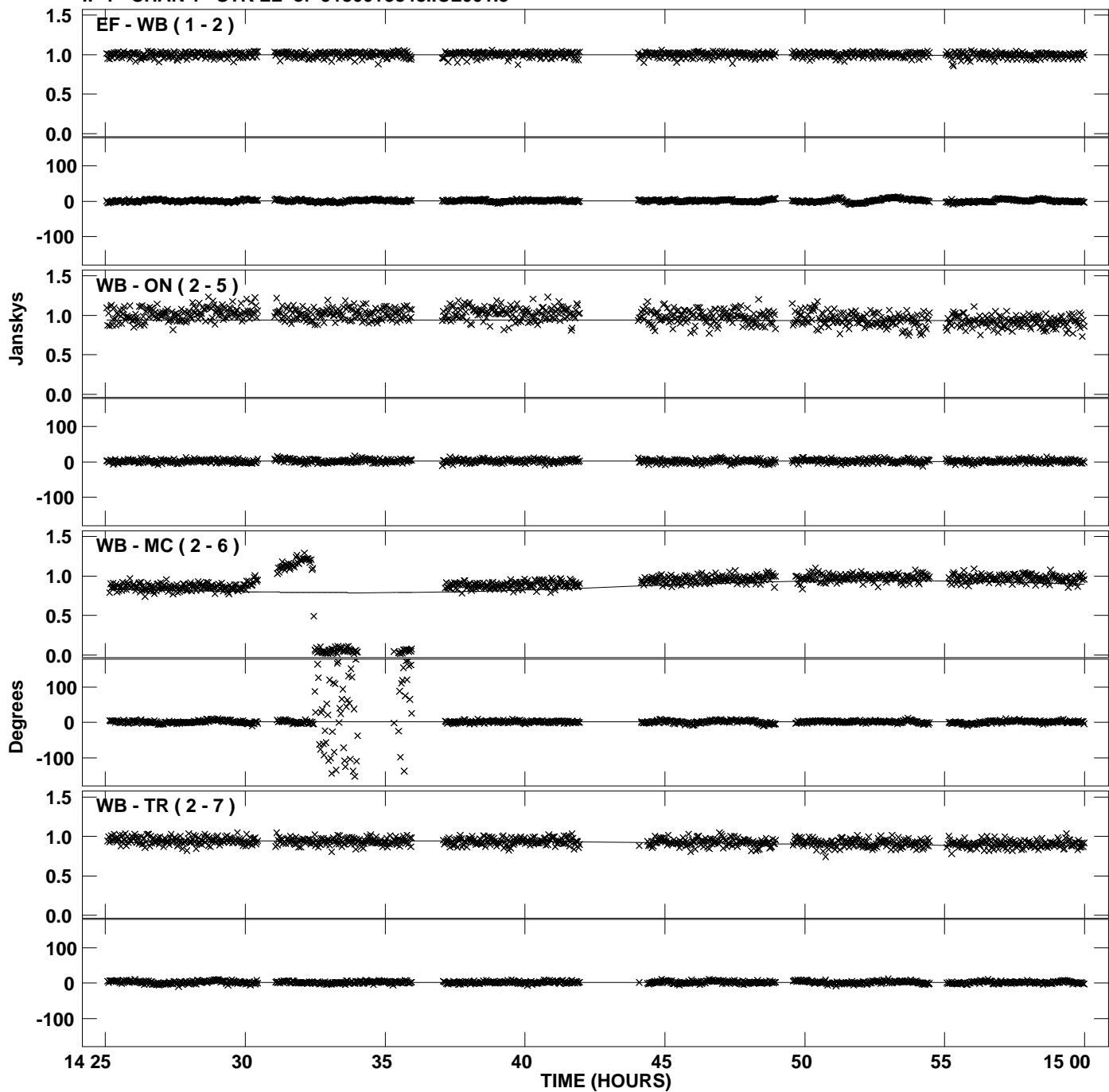
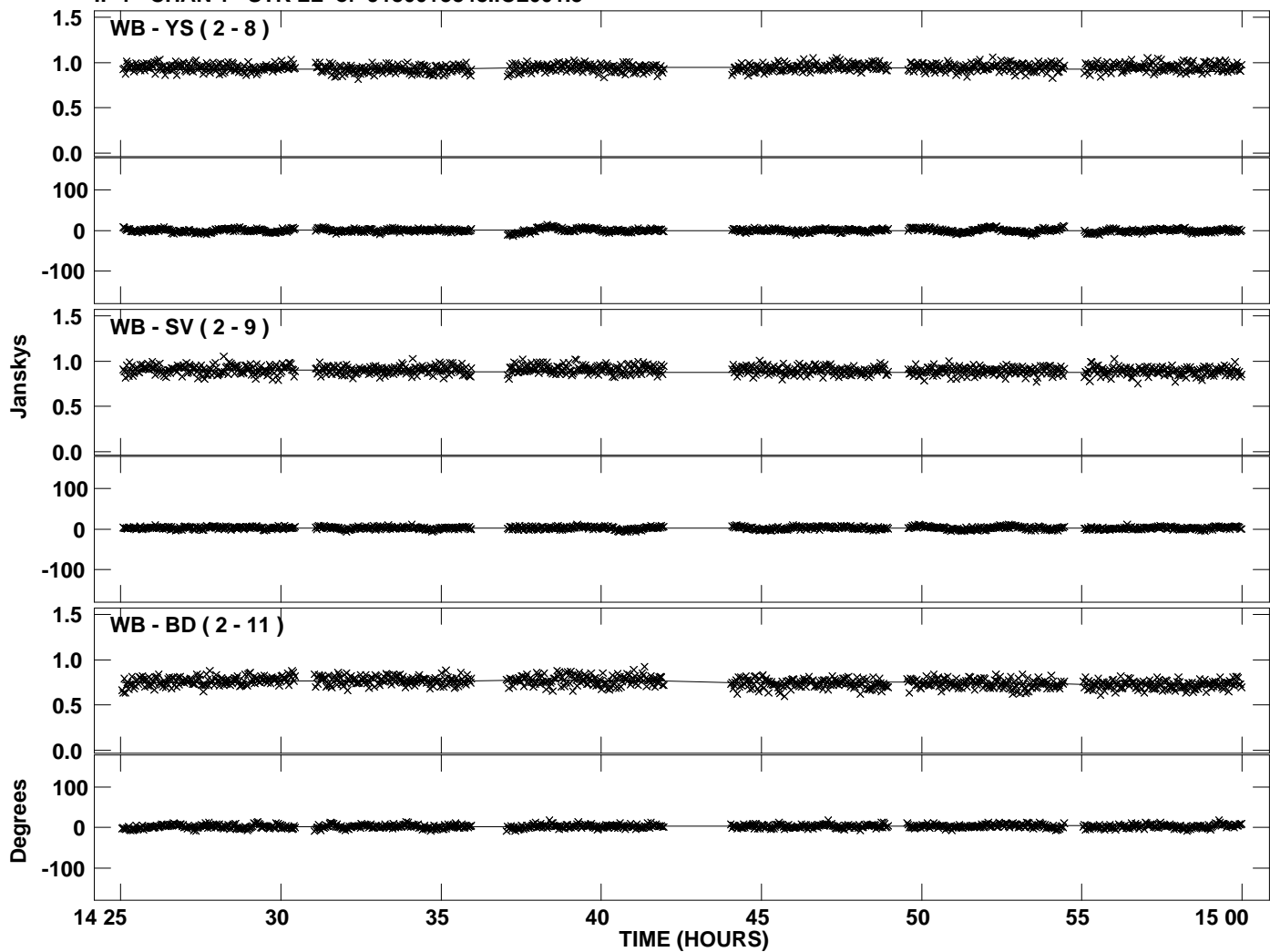


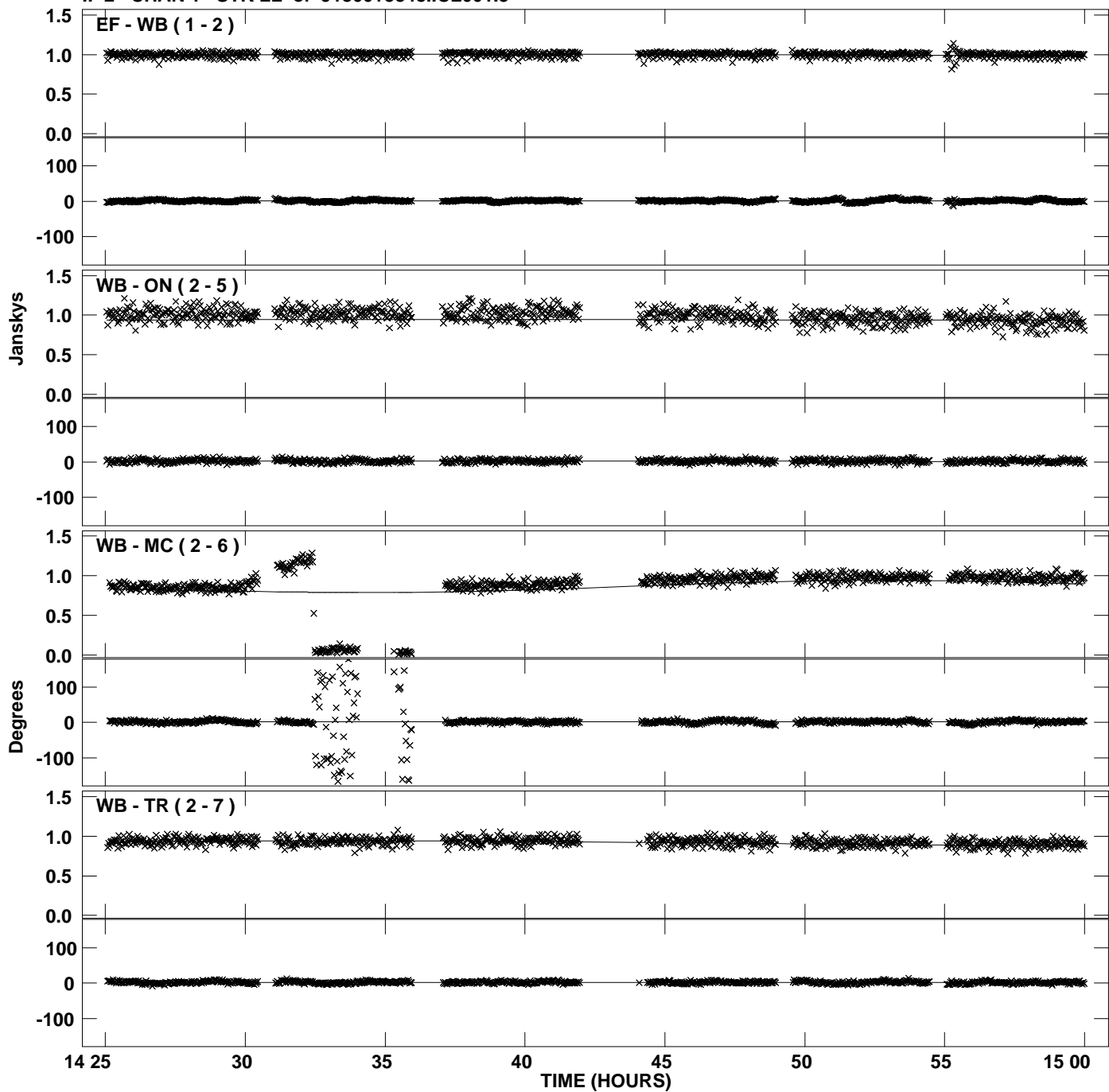
Plot file version 1 created 02-FEB-2011 18:37:18  
Amplitude and Phase vs Time for J1800+3848.MULTI.1 CL # 3  
IF 1 CHAN 1 STK LL of J1800+3848.ICL001.3



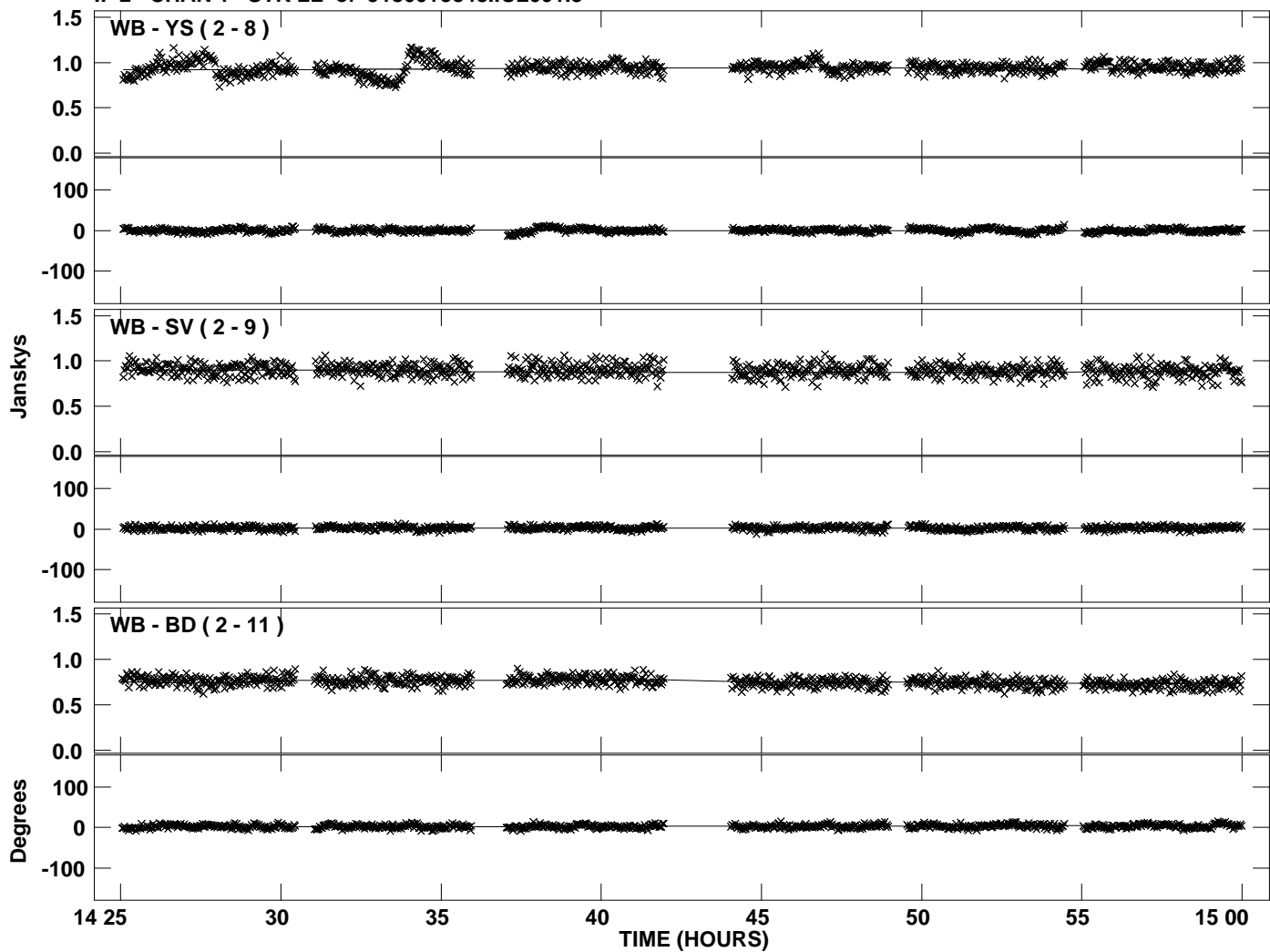
Plot file version 2 created 02-FEB-2011 18:37:19  
Amplitude and Phase vs Time for J1800+3848.MULTI.1 CL # 3  
IF 1 CHAN 1 STK LL of J1800+3848.ICL001.3



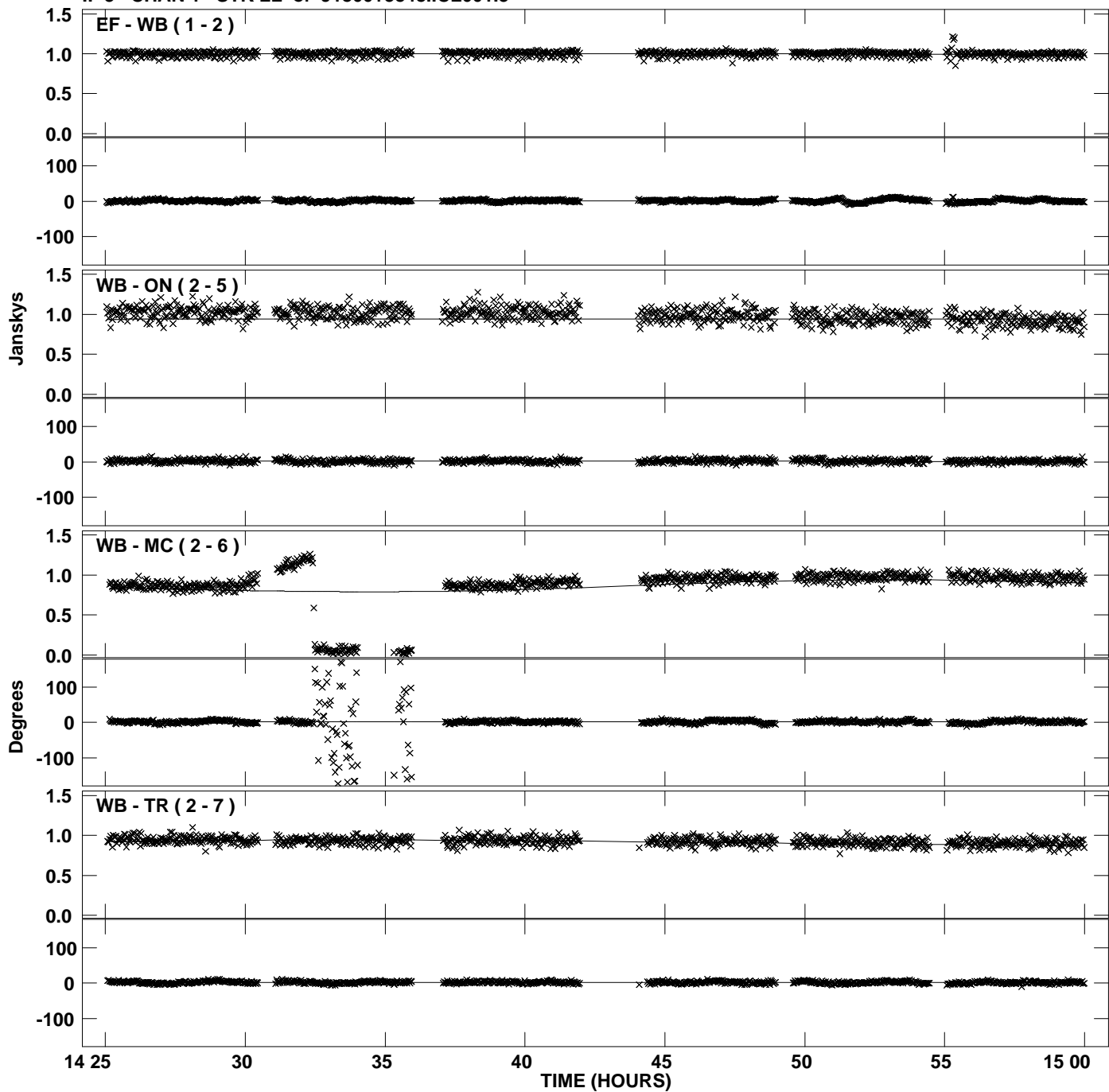
Plot file version 3 created 02-FEB-2011 18:37:21  
Amplitude and Phase vs Time for J1800+3848.MULTI.1 CL # 3  
IF 2 CHAN 1 STK LL of J1800+3848.ICL001.3



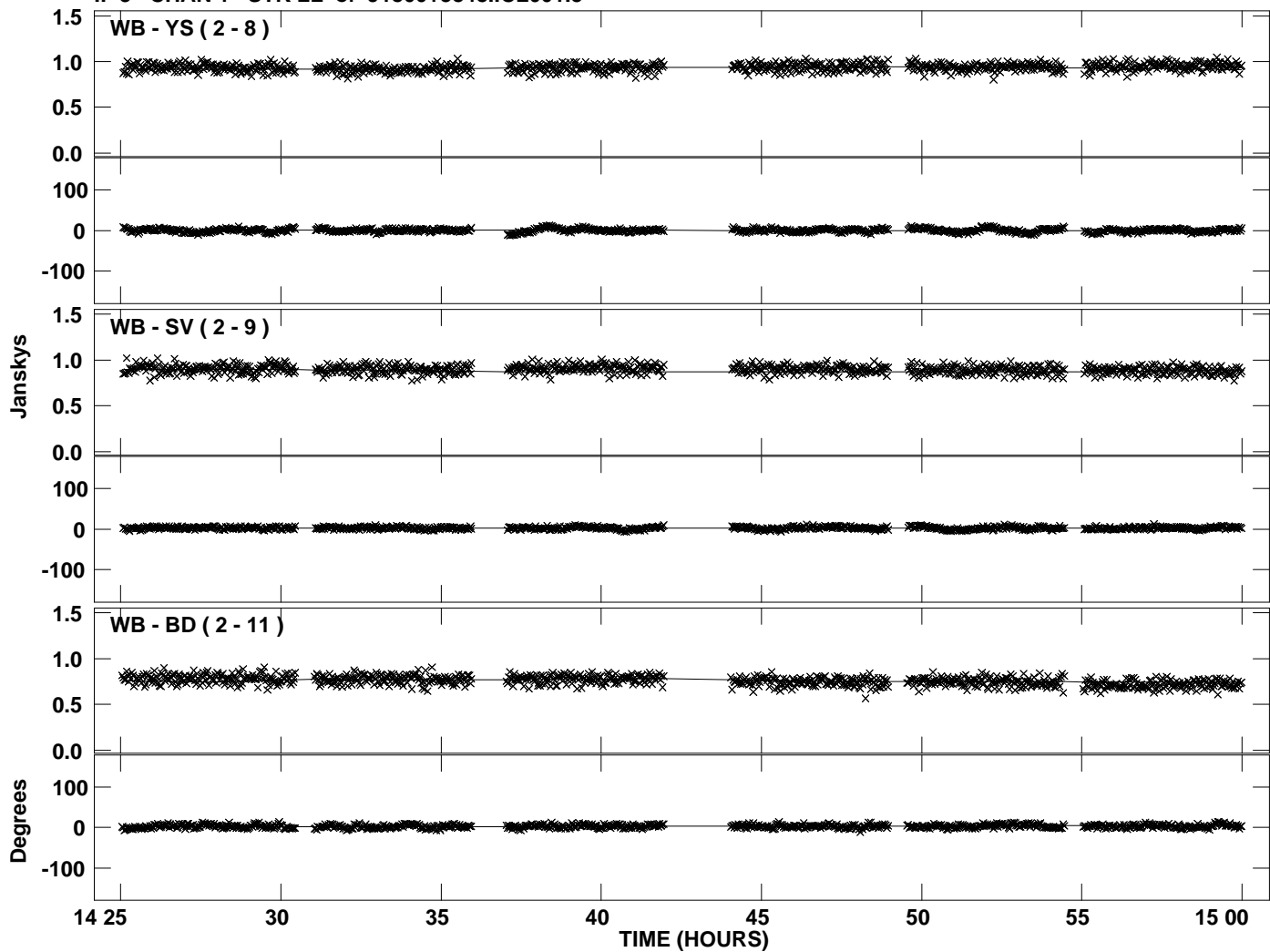
PLot file version 4 created 02-FEB-2011 18:37:21  
Amplitude andPhase vs Time for J1800+3848.MULTI.1 CL # 3  
IF 2 CHAN 1 STK LL of J1800+3848.ICL001.3



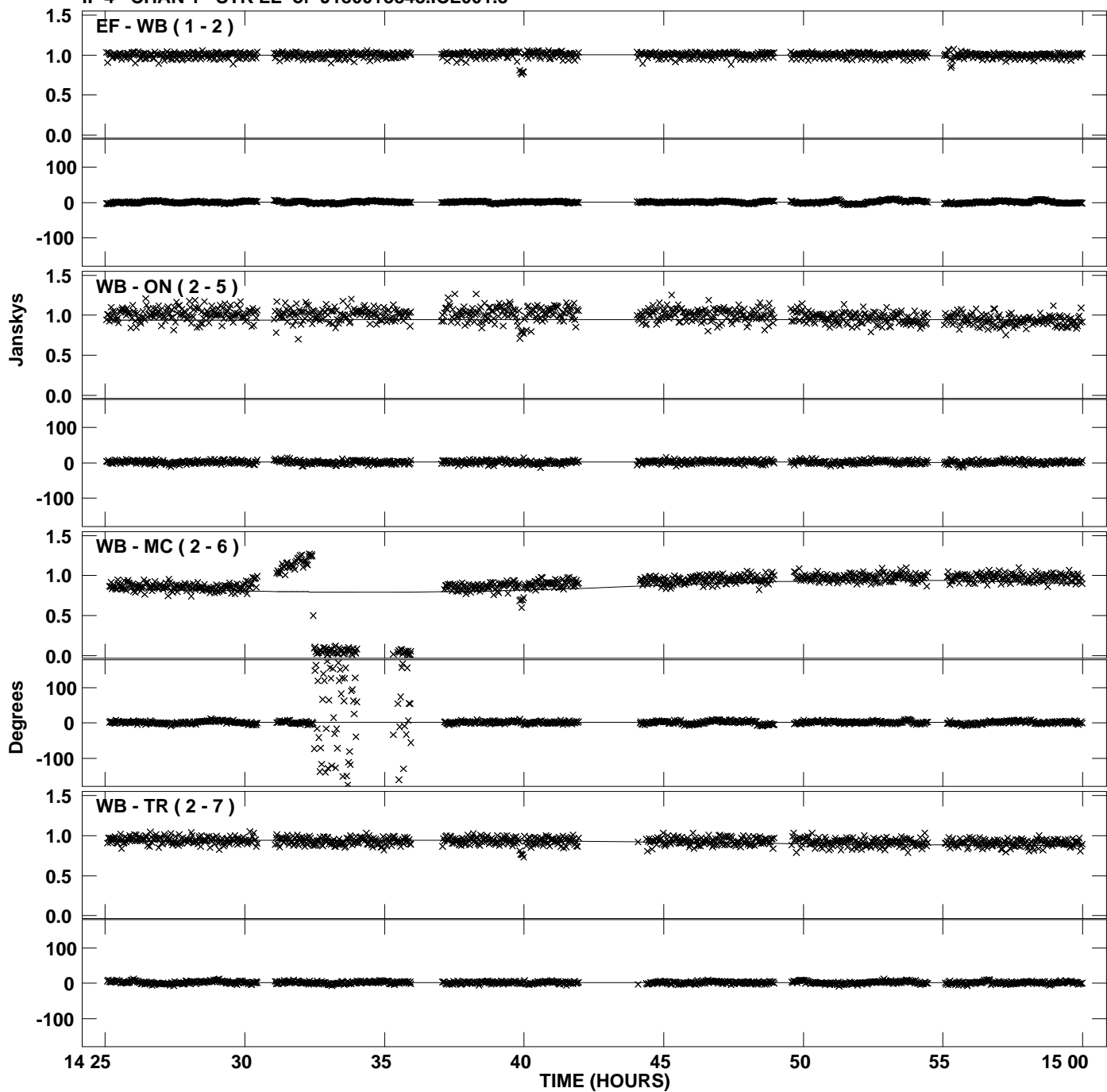
Plot file version 5 created 02-FEB-2011 18:37:24  
Amplitude and Phase vs Time for J1800+3848.MULTI.1 CL # 3  
IF 3 CHAN 1 STK LL of J1800+3848.ICL001.3



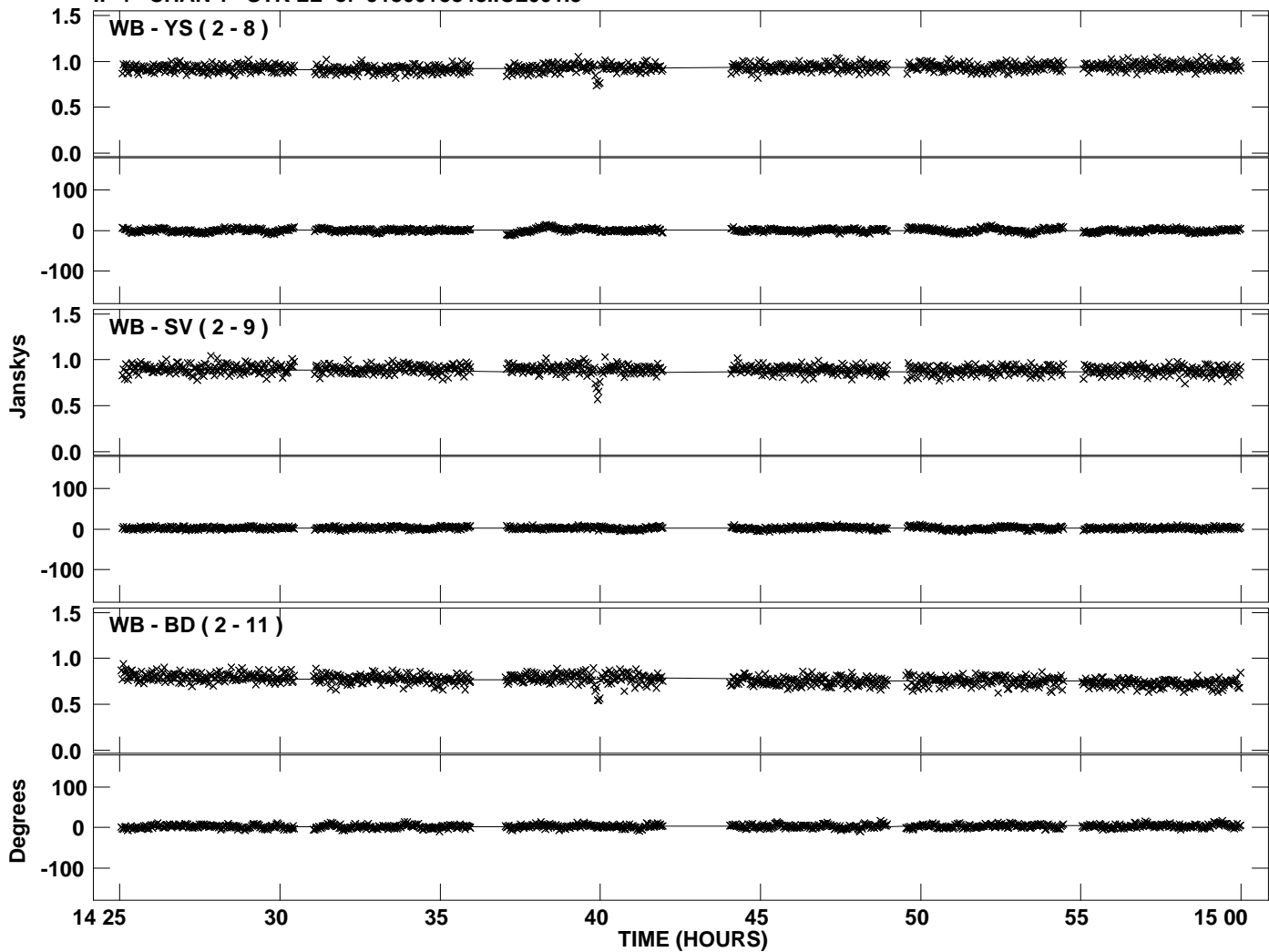
PLot file version 6 created 02-FEB-2011 18:37:24  
Amplitude and Phase vs Time for J1800+3848.MULTI.1 CL # 3  
IF 3 CHAN 1 STK LL of J1800+3848.ICL001.3



Plot file version 7 created 02-FEB-2011 18:37:26  
Amplitude and Phase vs Time for J1800+3848.MULTI.1 CL # 3  
IF 4 CHAN 1 STK LL of J1800+3848.ICL001.3

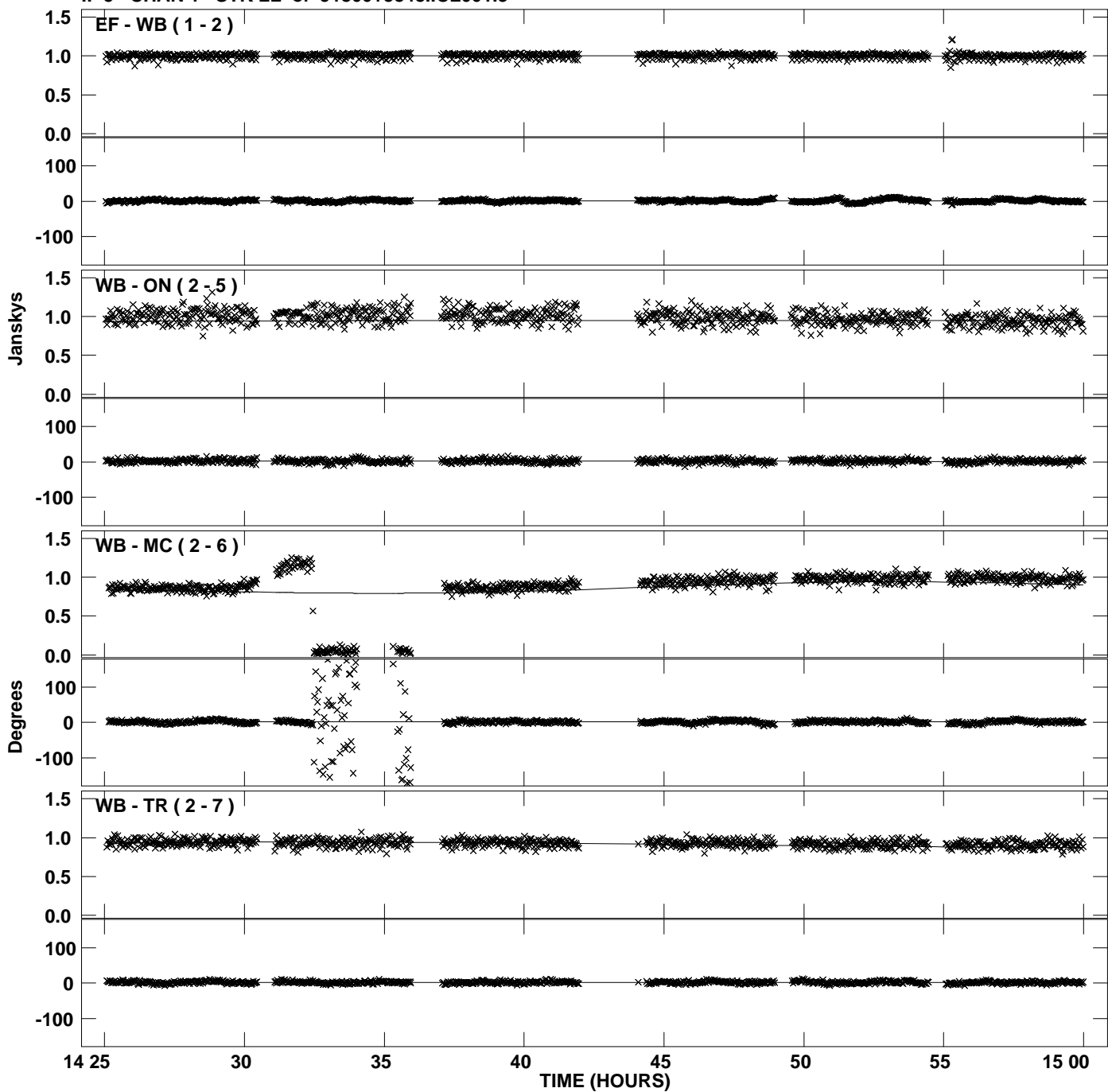


PLot file version 8 created 02-FEB-2011 18:37:26  
Amplitude andPhase vs Time for J1800+3848.MULTI.1 CL # 3  
IF 4 CHAN 1 STK LL of J1800+3848.ICL001.3

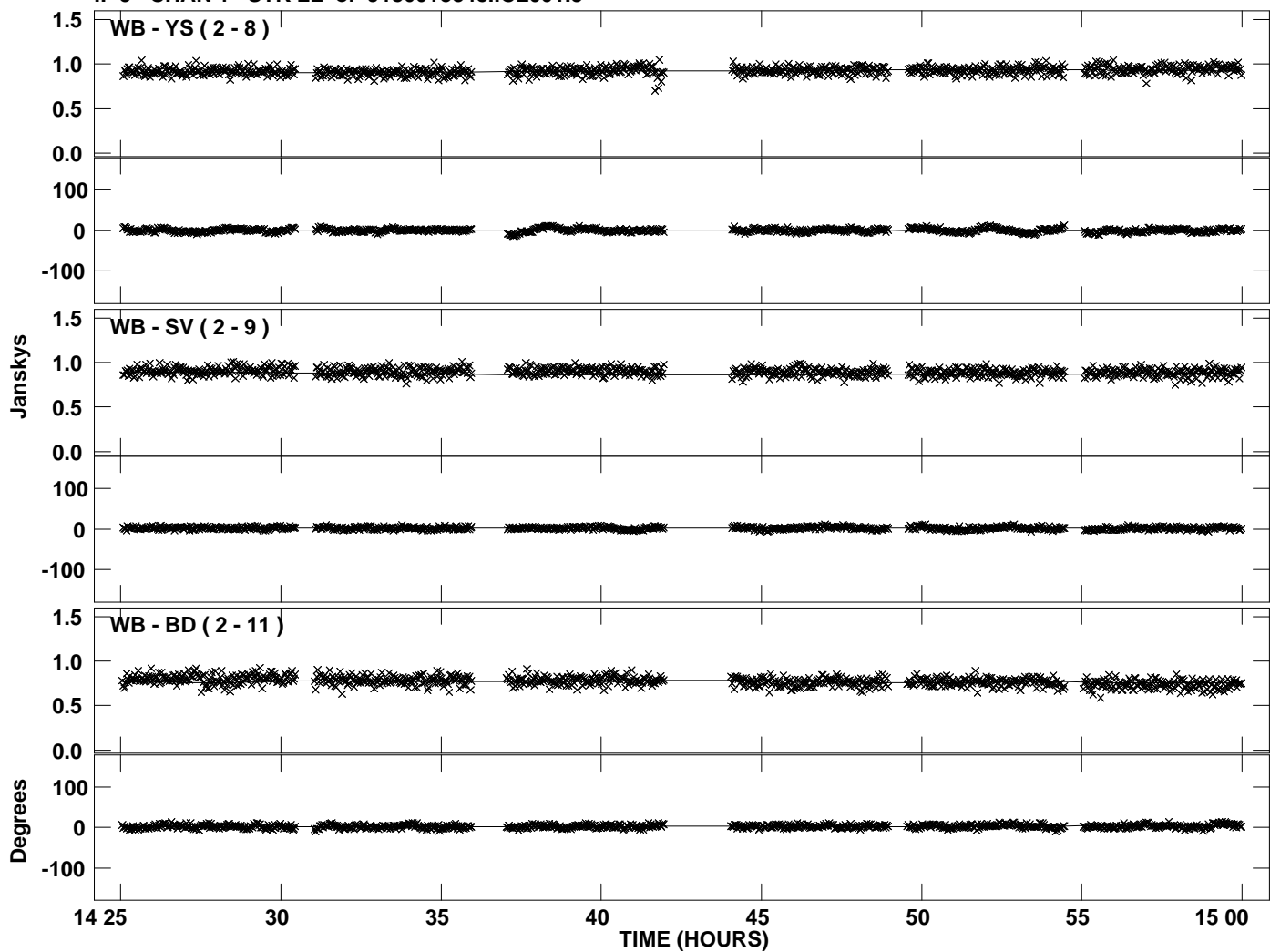




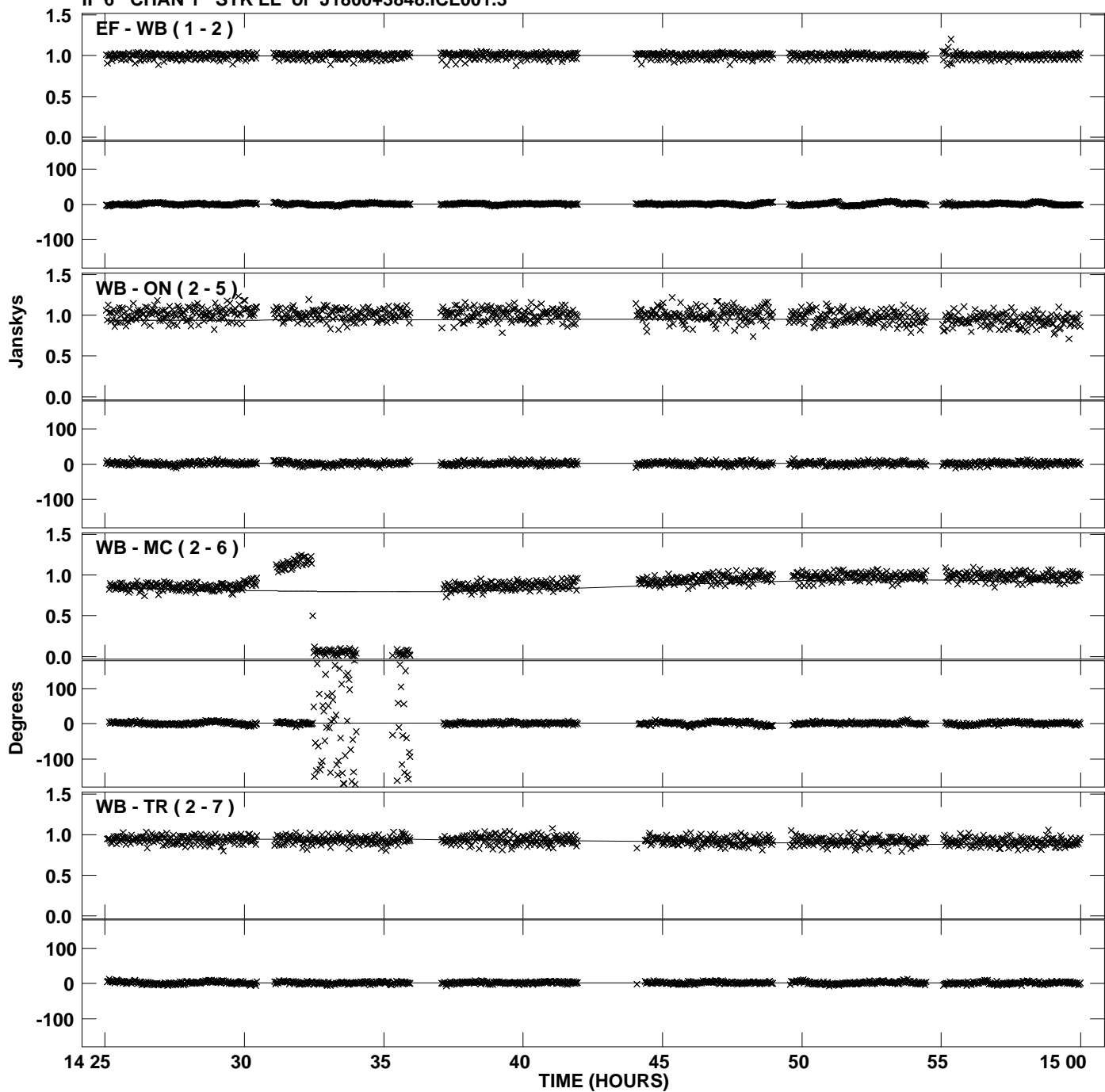
Plot file version 9 created 02-FEB-2011 18:37:31  
Amplitude and Phase vs Time for J1800+3848.MULTI.1 CL # 3  
IF 5 CHAN 1 STK LL of J1800+3848.ICL001.3



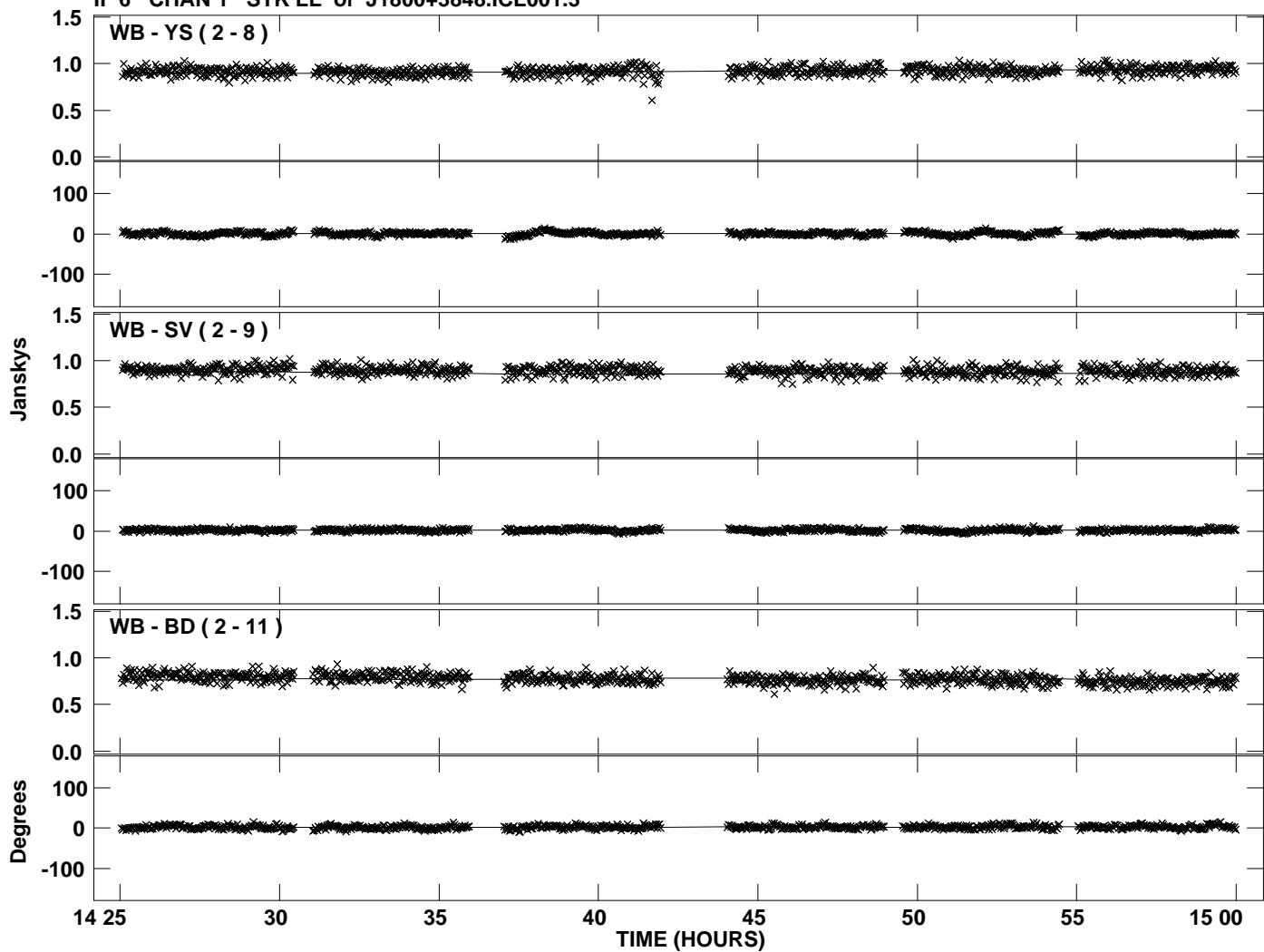
PLot file version 10 created 02-FEB-2011 18:37:32  
Amplitude and Phase vs Time for J1800+3848.MULTI.1 CL # 3  
IF 5 CHAN 1 STK LL of J1800+3848.ICL001.3



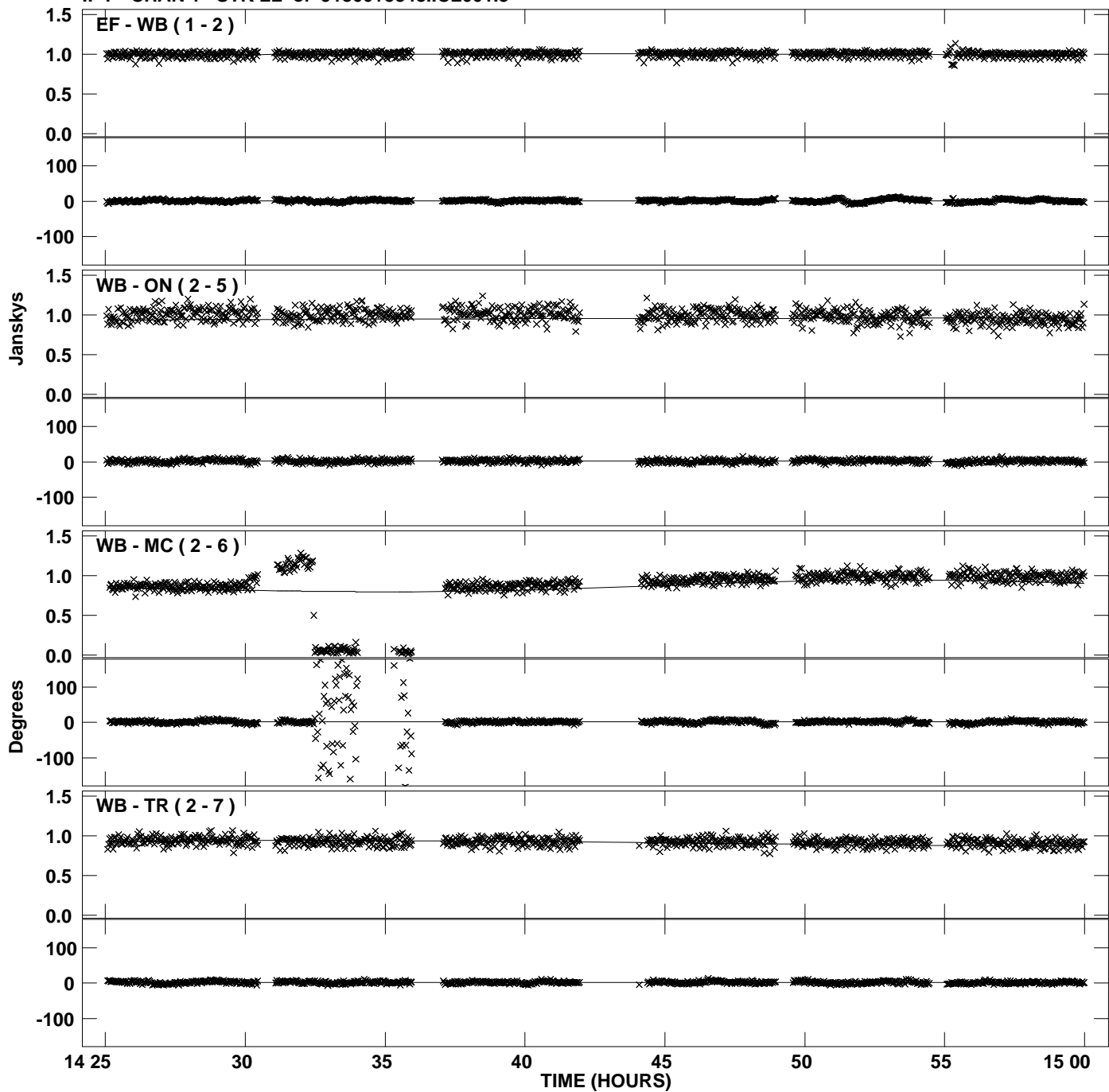
Plot file version 11 created 02-FEB-2011 18:37:38  
Amplitude and Phase vs Time for J1800+3848.MULTI.1 CL # 3  
IF 6 CHAN 1 STK LL of J1800+3848.ICL001.3



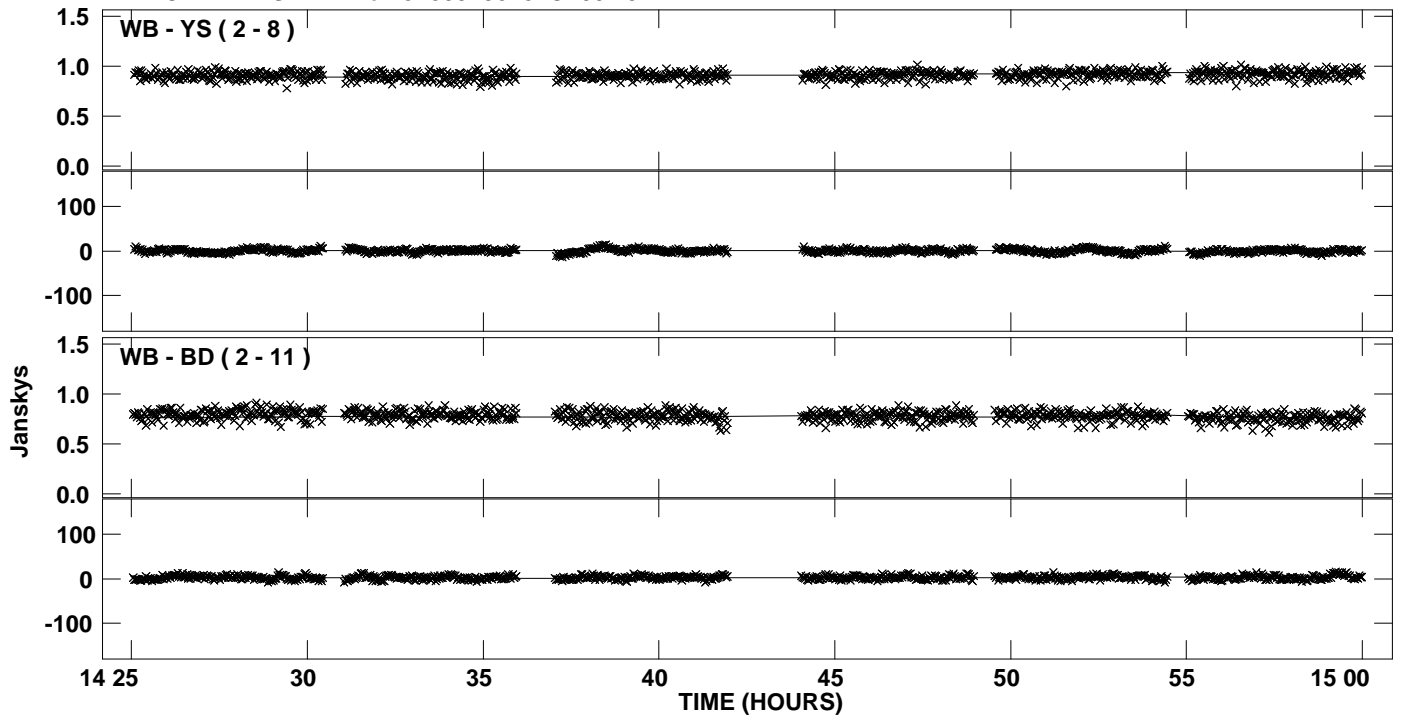
PLot file version 12 created 02-FEB-2011 18:37:38  
Amplitude andPhase vs Time for J1800+3848.MULTI.1 CL # 3  
IF 6 CHAN 1 STK LL of J1800+3848.ICL001.3



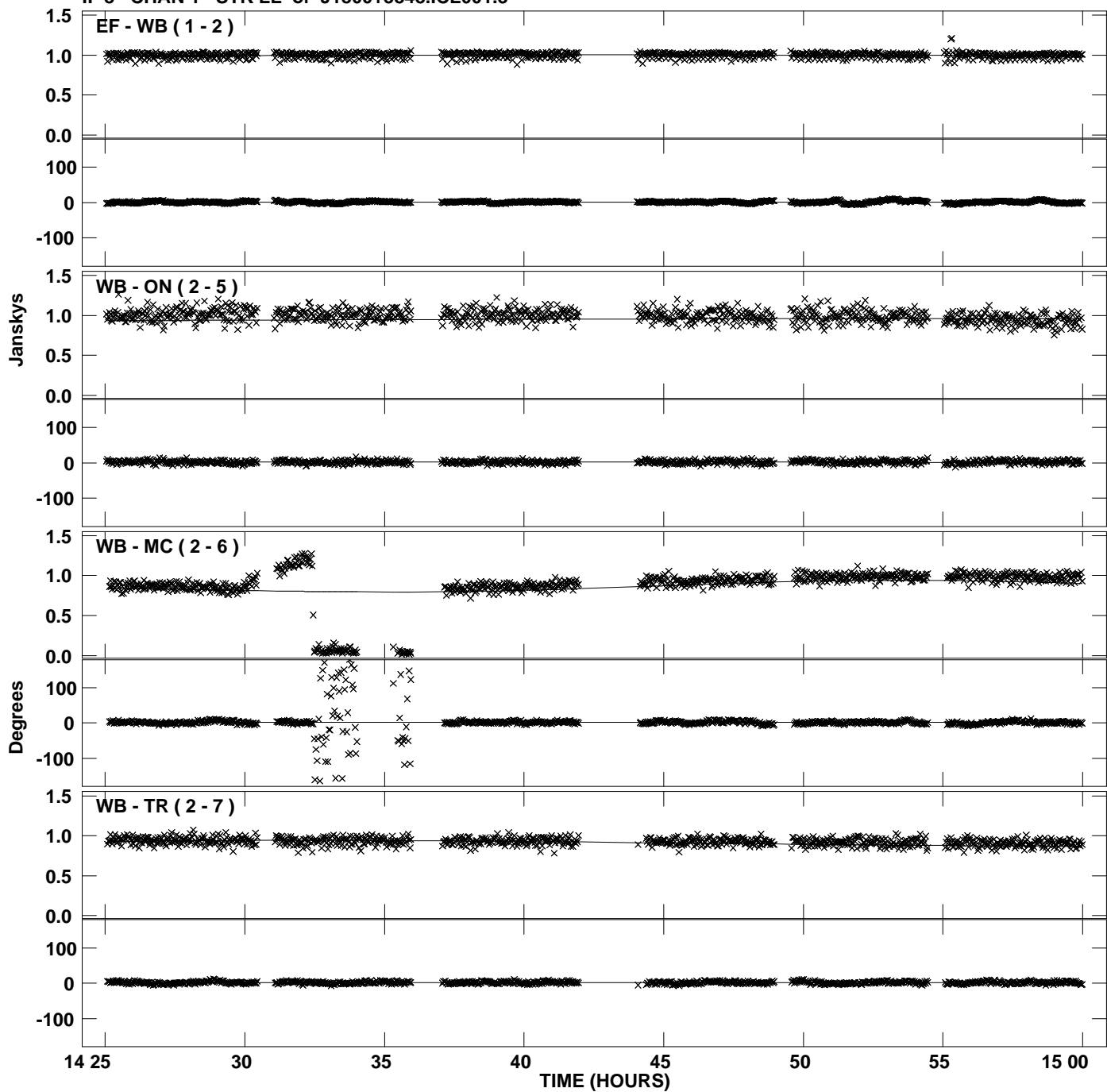
Plot file version 13 created 02-FEB-2011 18:37:40  
Amplitude and Phase vs Time for J1800+3848.MULTI.1 CL # 3  
IF 7 CHAN 1 STK LL of J1800+3848.ICL001.3



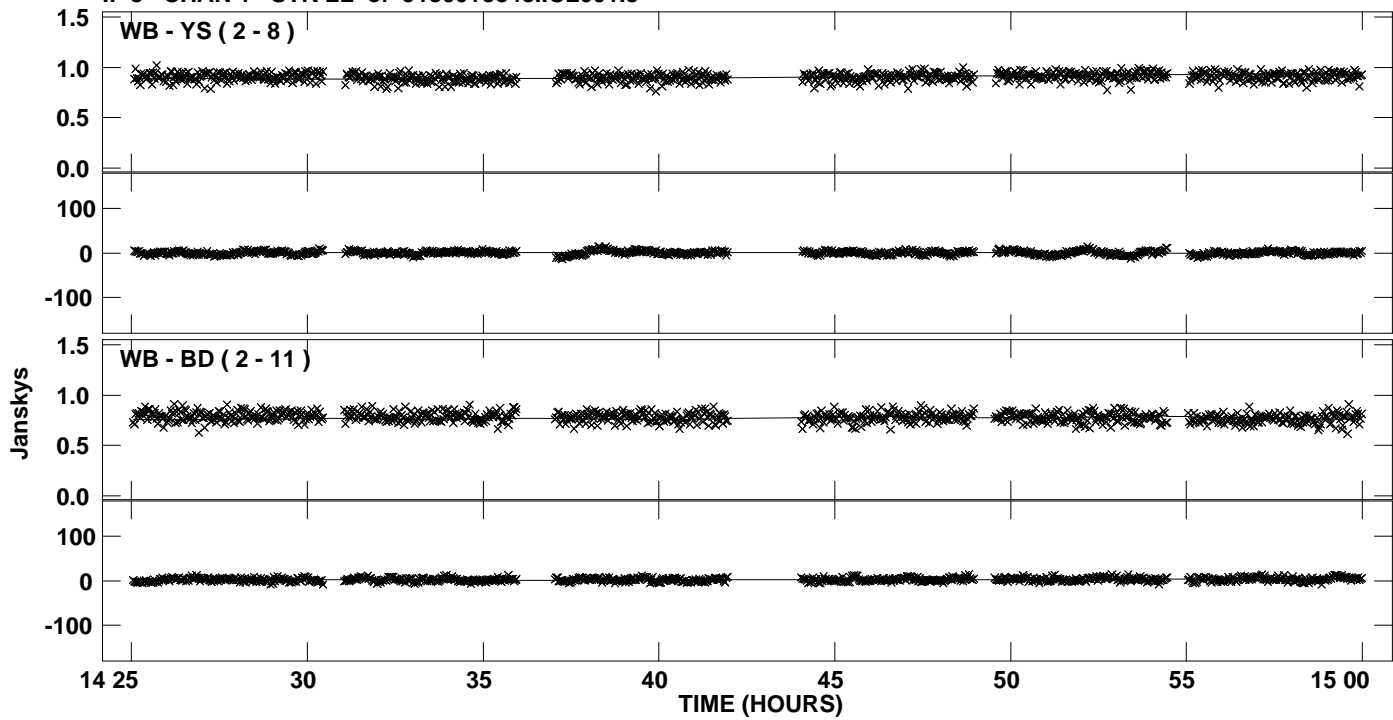
PLot file version 14 created 02-FEB-2011 18:37:40  
Amplitude andPhase vs Time for J1800+3848.MULTI.1 CL # 3  
IF 7 CHAN 1 STK LL of J1800+3848.ICL001.3



Plot file version 15 created 02-FEB-2011 18:37:40  
Amplitude and Phase vs Time for J1800+3848.MULTI.1 CL # 3  
IF 8 CHAN 1 STK LL of J1800+3848.ICL001.3

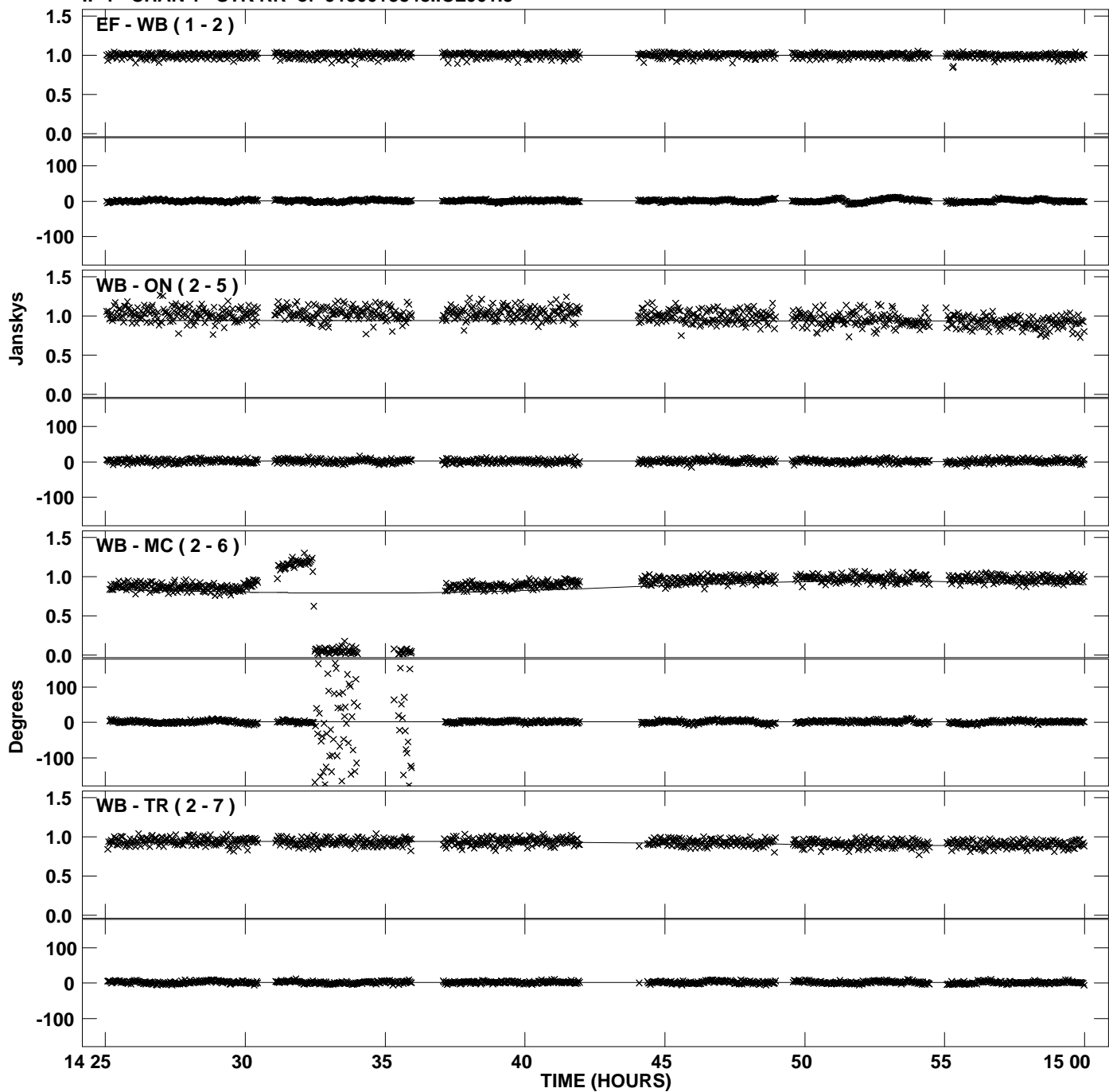


PLot file version 16 created 02-FEB-2011 18:37:40  
Amplitude andPhase vs Time for J1800+3848.MULTI.1 CL # 3  
IF 8 CHAN 1 STK LL of J1800+3848.ICL001.3

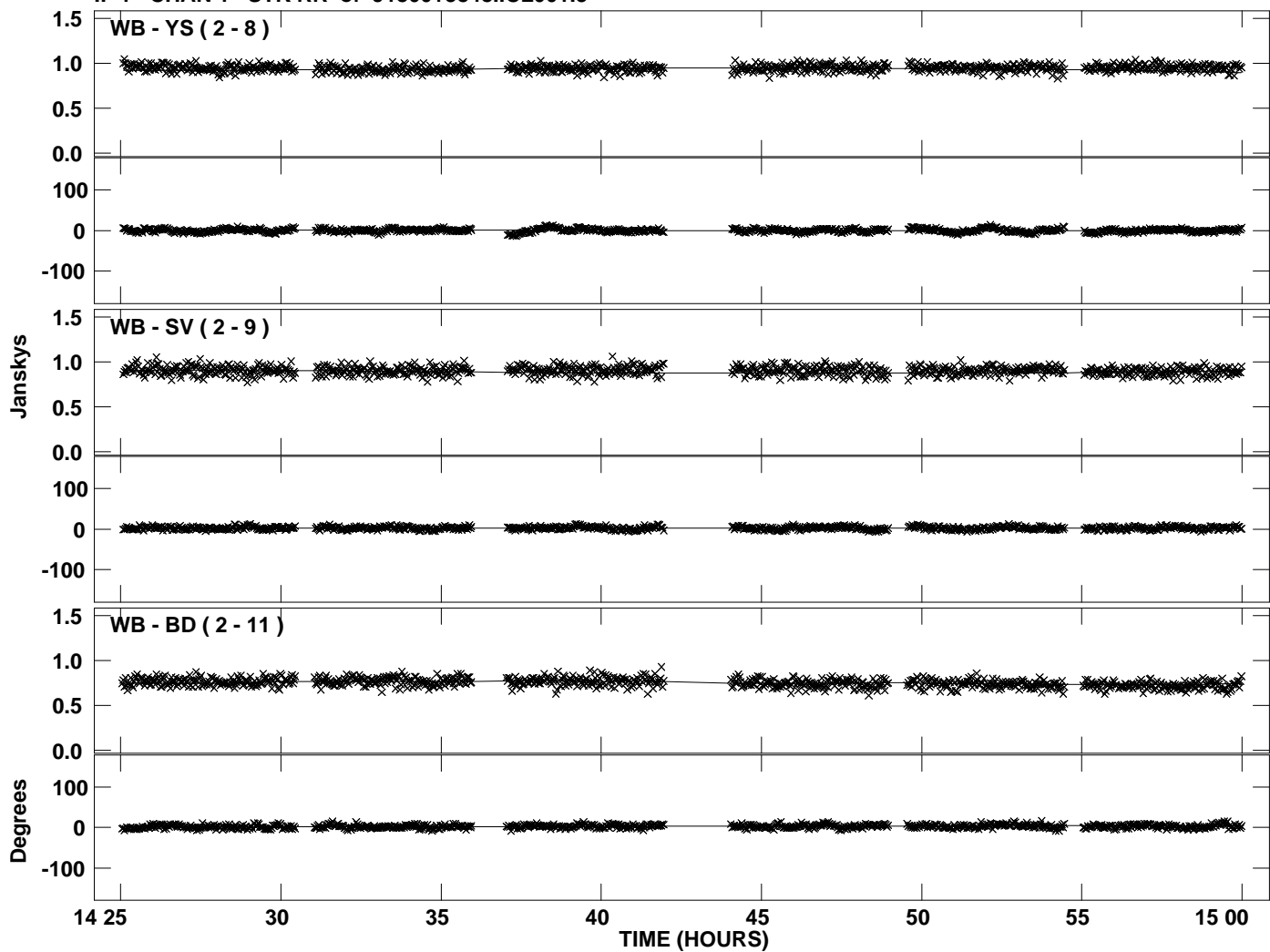




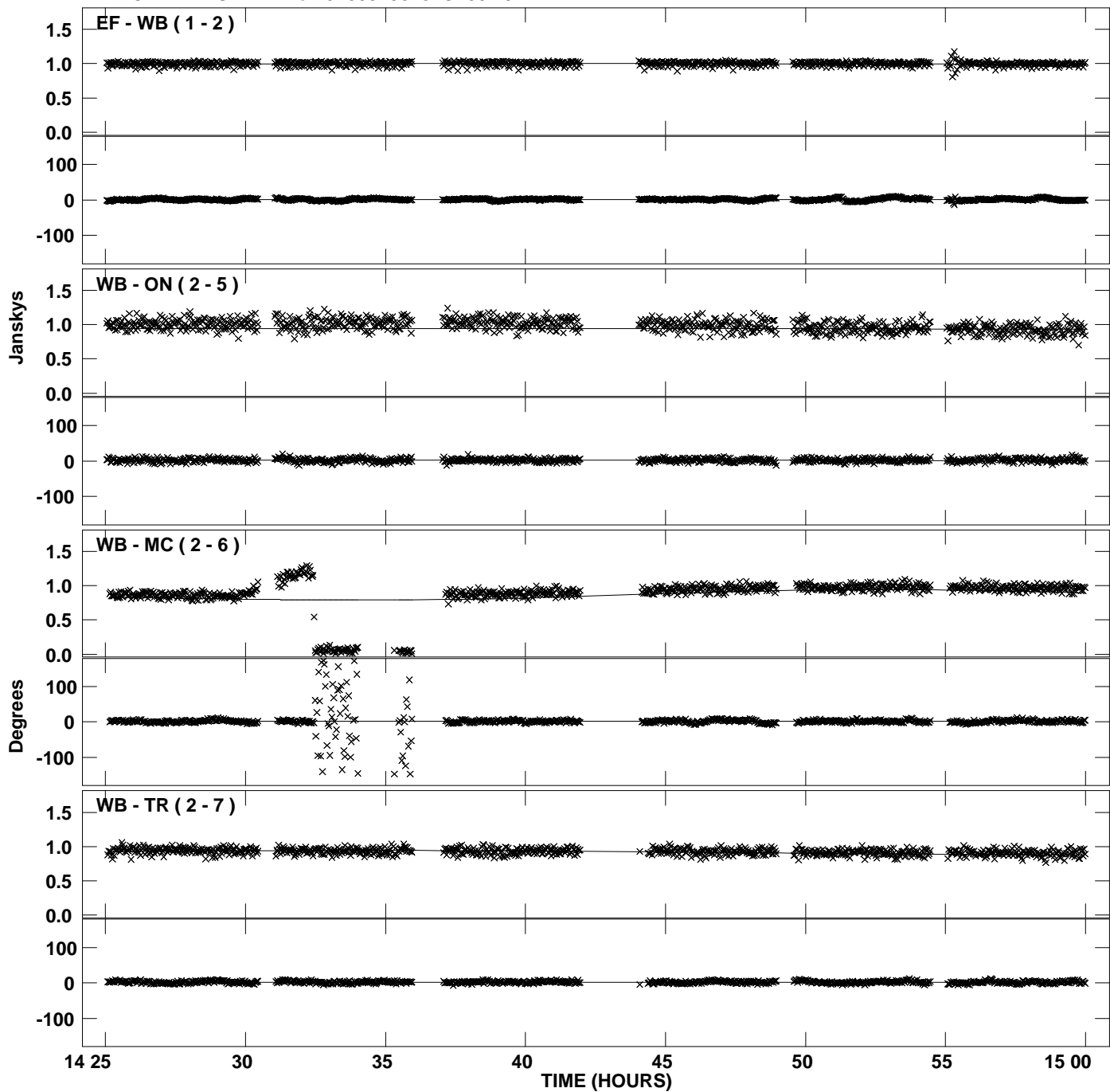
Plot file version 17 created 02-FEB-2011 18:37:40  
Amplitude and Phase vs Time for J1800+3848.MULTI.1 CL # 3  
IF 1 CHAN 1 STK RR of J1800+3848.ICL001.3



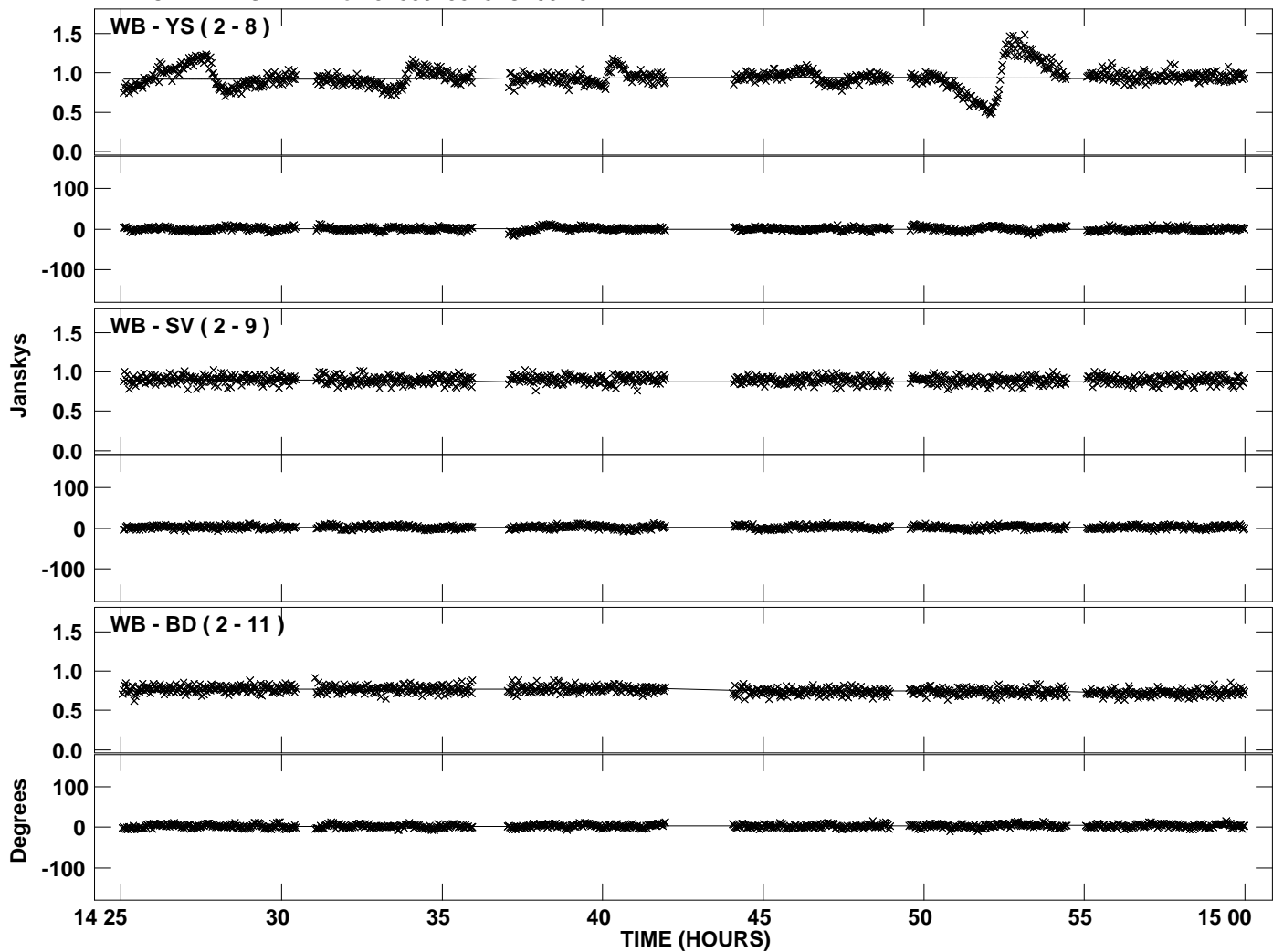
PLot file version 18 created 02-FEB-2011 18:37:40  
Amplitude andPhase vs Time for J1800+3848.MULTI.1 CL # 3  
IF 1 CHAN 1 STK RR of J1800+3848.ICL001.3



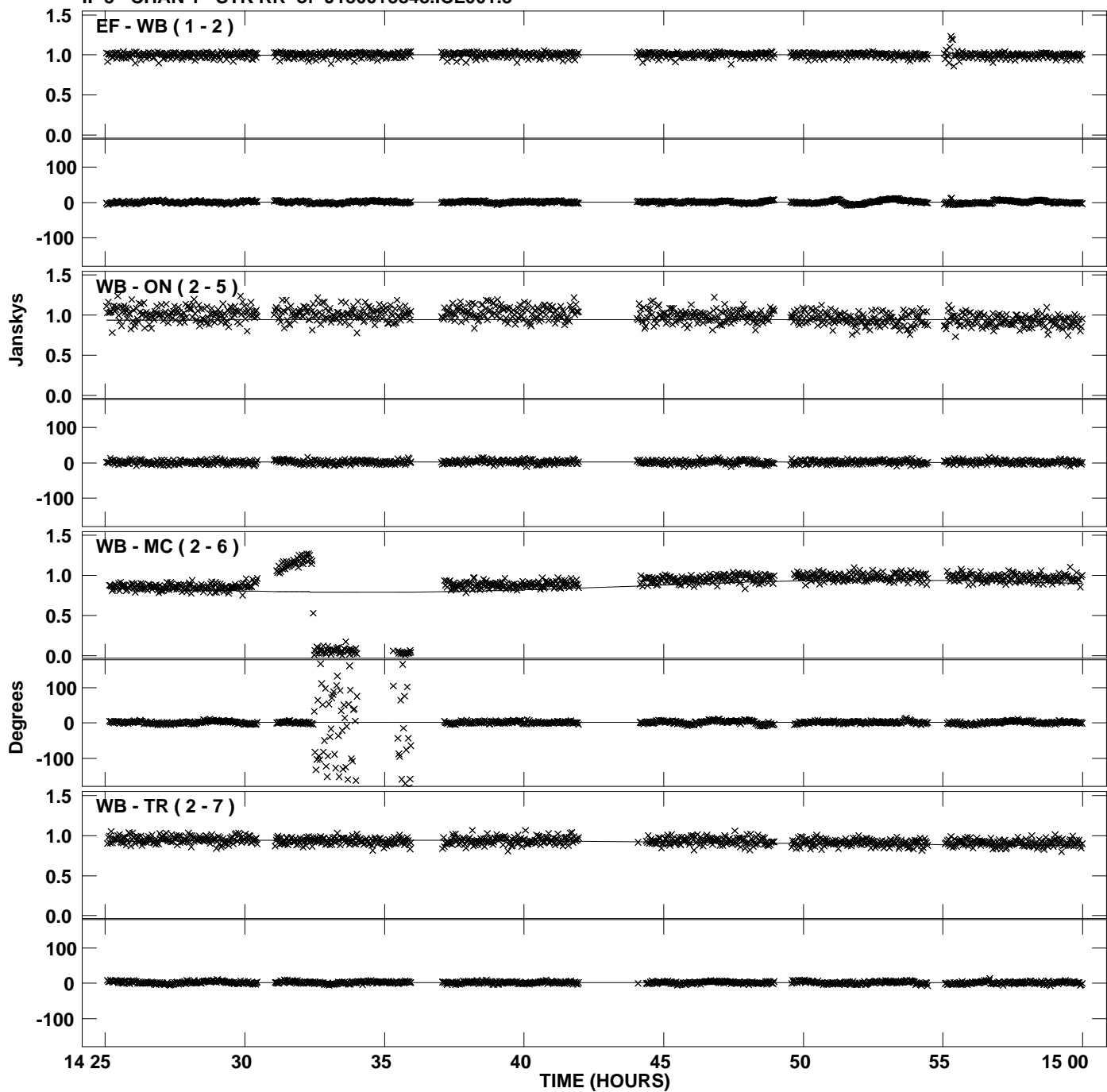
Plot file version 19 created 02-FEB-2011 18:37:41  
Amplitude and Phase vs Time for J1800+3848.MULTI.1 CL # 3  
IF 2 CHAN 1 STK RR of J1800+3848.ICL001.3



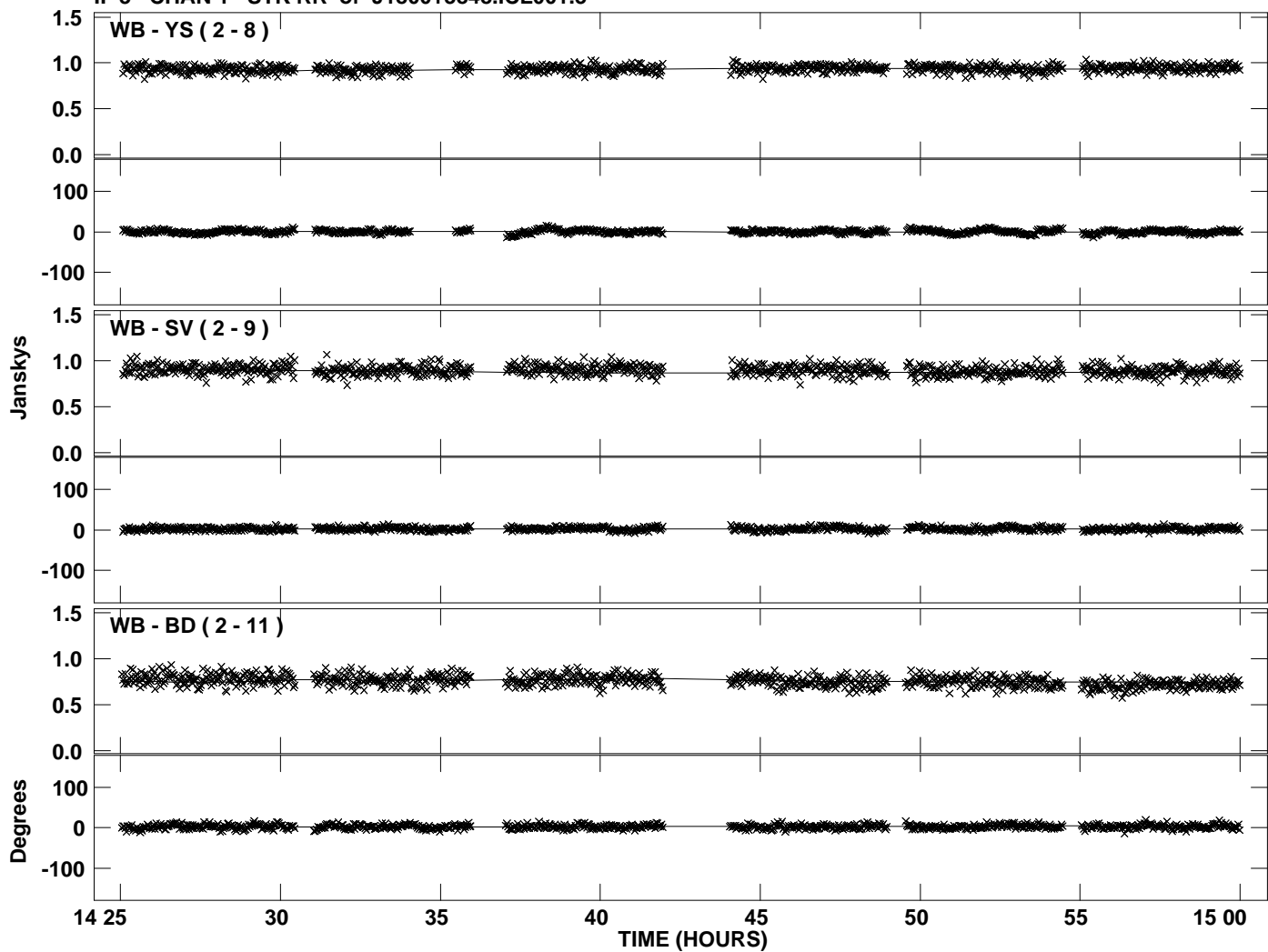
PLot file version 20 created 02-FEB-2011 18:37:41  
Amplitude andPhase vs Time for J1800+3848.MULTI.1 CL # 3  
IF 2 CHAN 1 STK RR of J1800+3848.ICL001.3



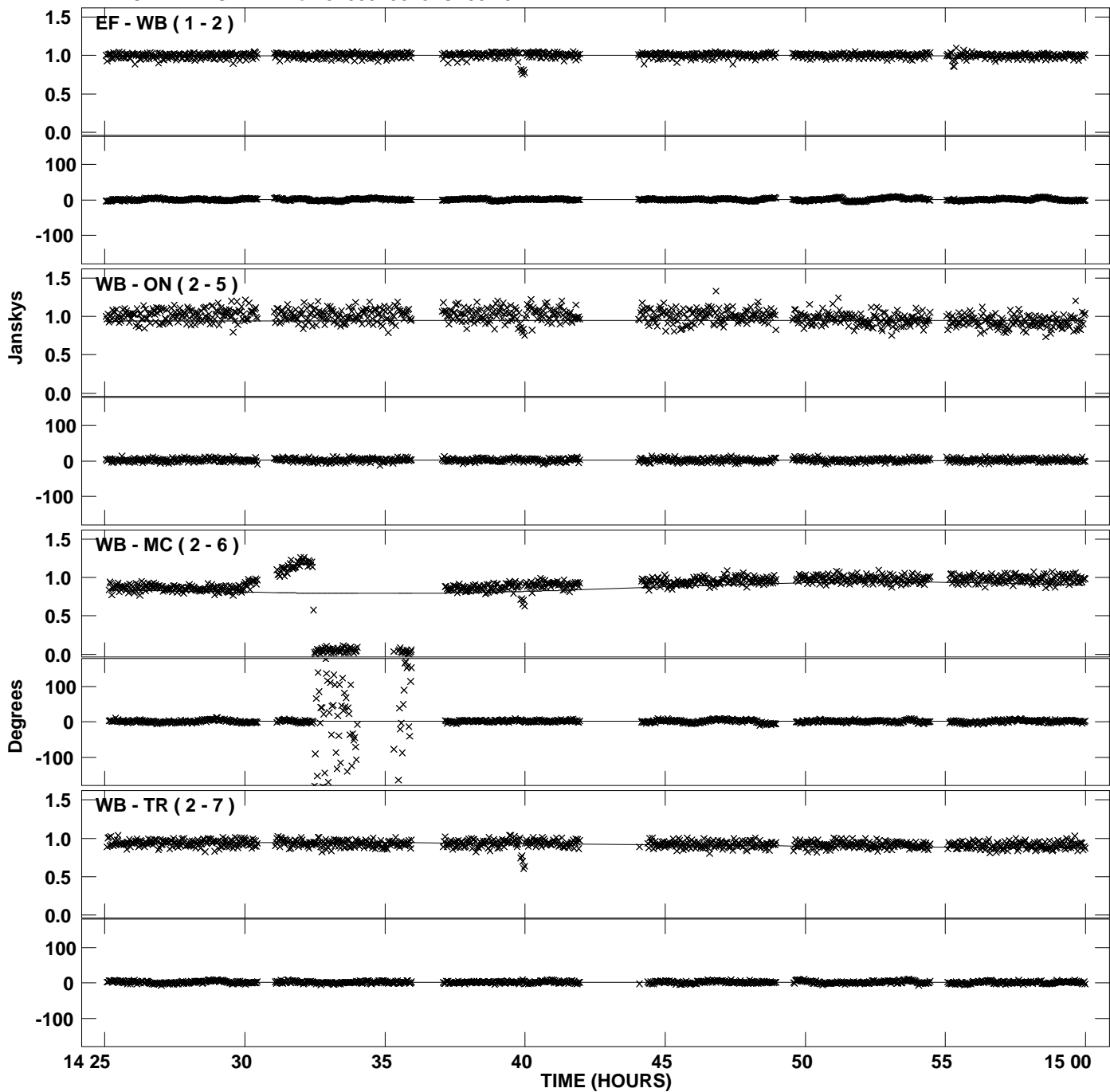
Plot file version 21 created 02-FEB-2011 18:37:41  
Amplitude and Phase vs Time for J1800+3848.MULTI.1 CL # 3  
IF 3 CHAN 1 STK RR of J1800+3848.ICL001.3



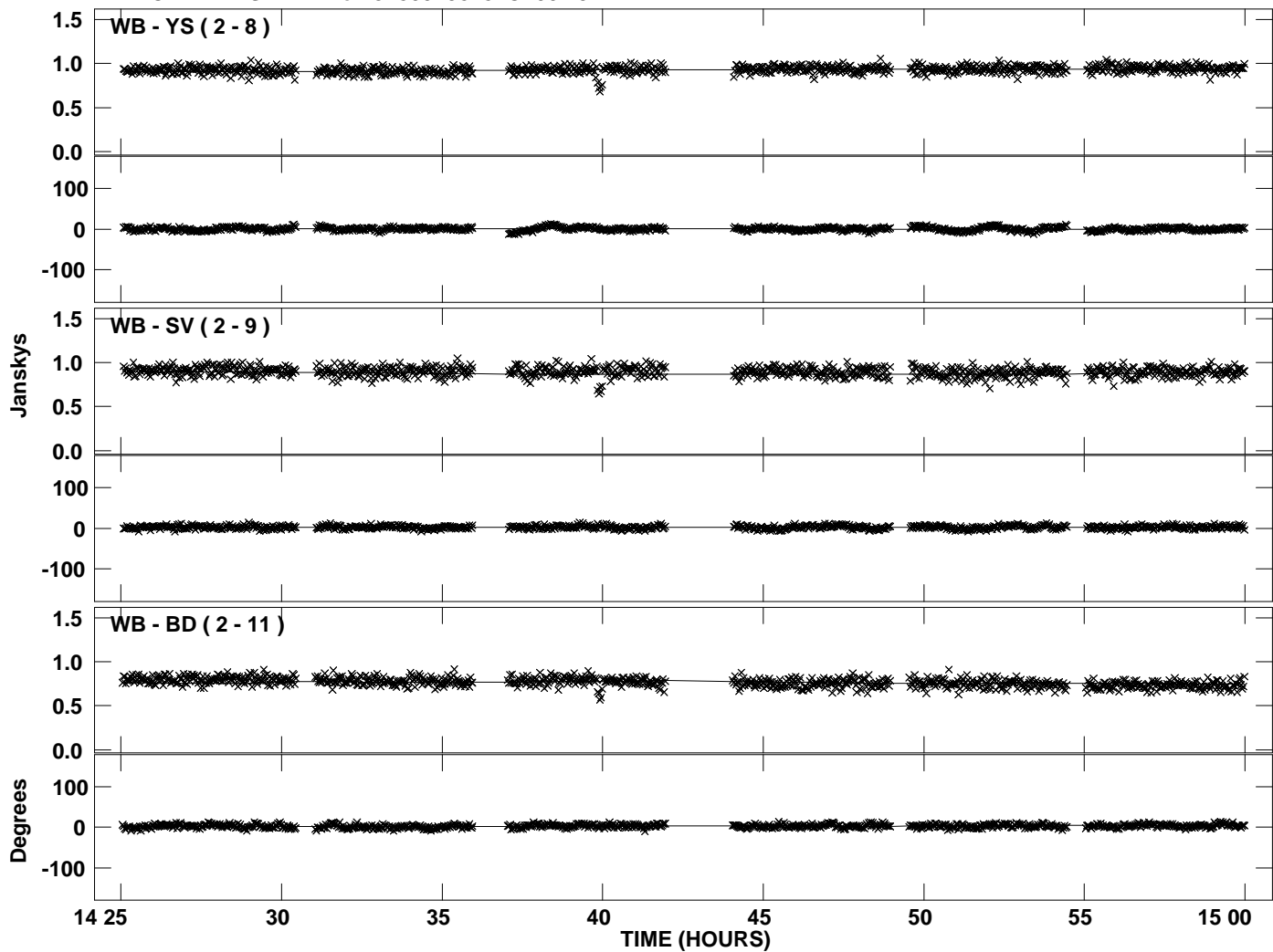
PLot file version 22 created 02-FEB-2011 18:37:41  
Amplitude and Phase vs Time for J1800+3848.MULTI.1 CL # 3  
IF 3 CHAN 1 STK RR of J1800+3848.ICL001.3



Plot file version 23 created 02-FEB-2011 18:37:41  
Amplitude and Phase vs Time for J1800+3848.MULTI.1 CL # 3  
IF 4 CHAN 1 STK RR of J1800+3848.ICL001.3

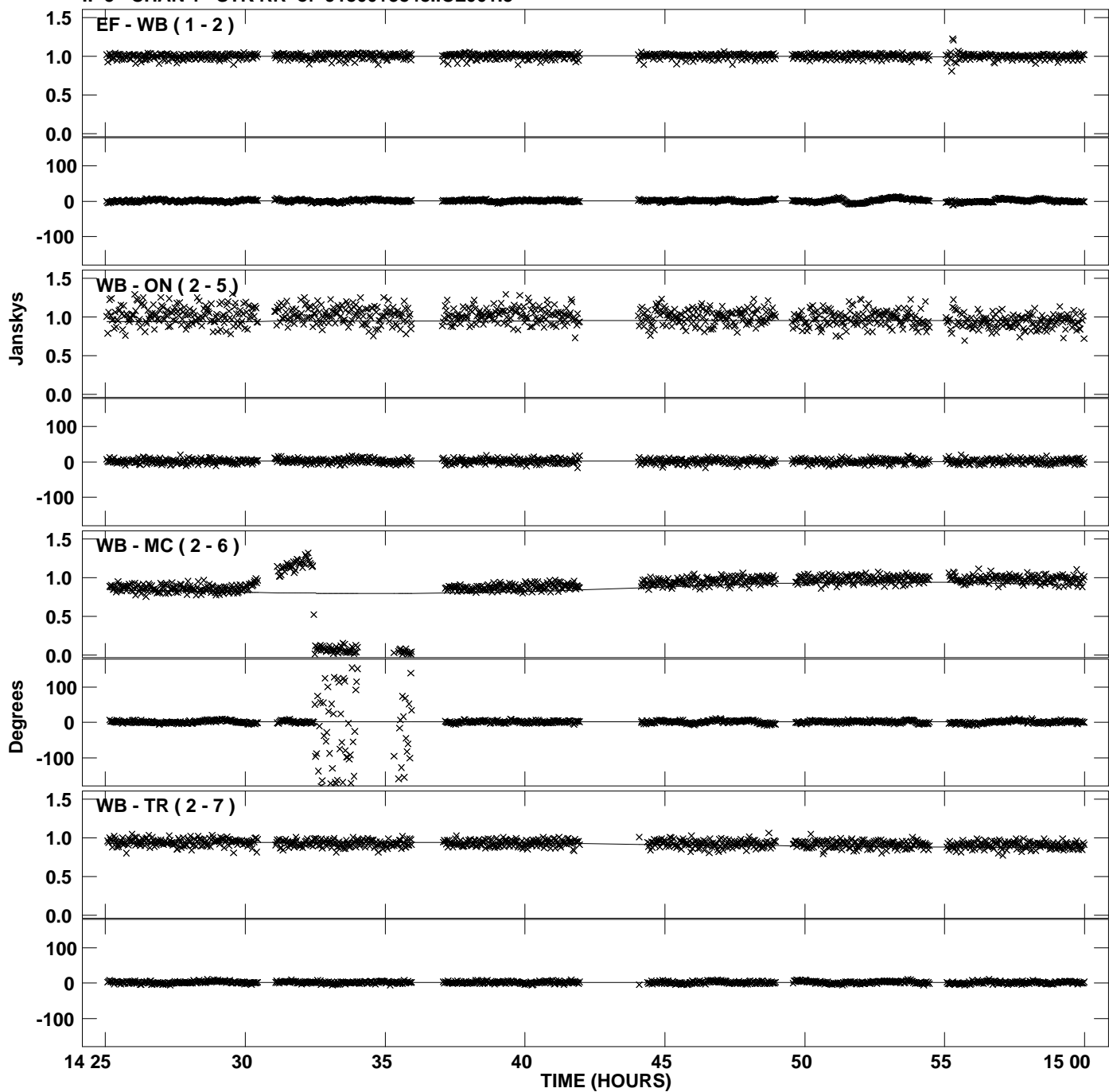


PLot file version 24 created 02-FEB-2011 18:37:41  
Amplitude andPhase vs Time for J1800+3848.MULTI.1 CL # 3  
IF 4 CHAN 1 STK RR of J1800+3848.ICL001.3

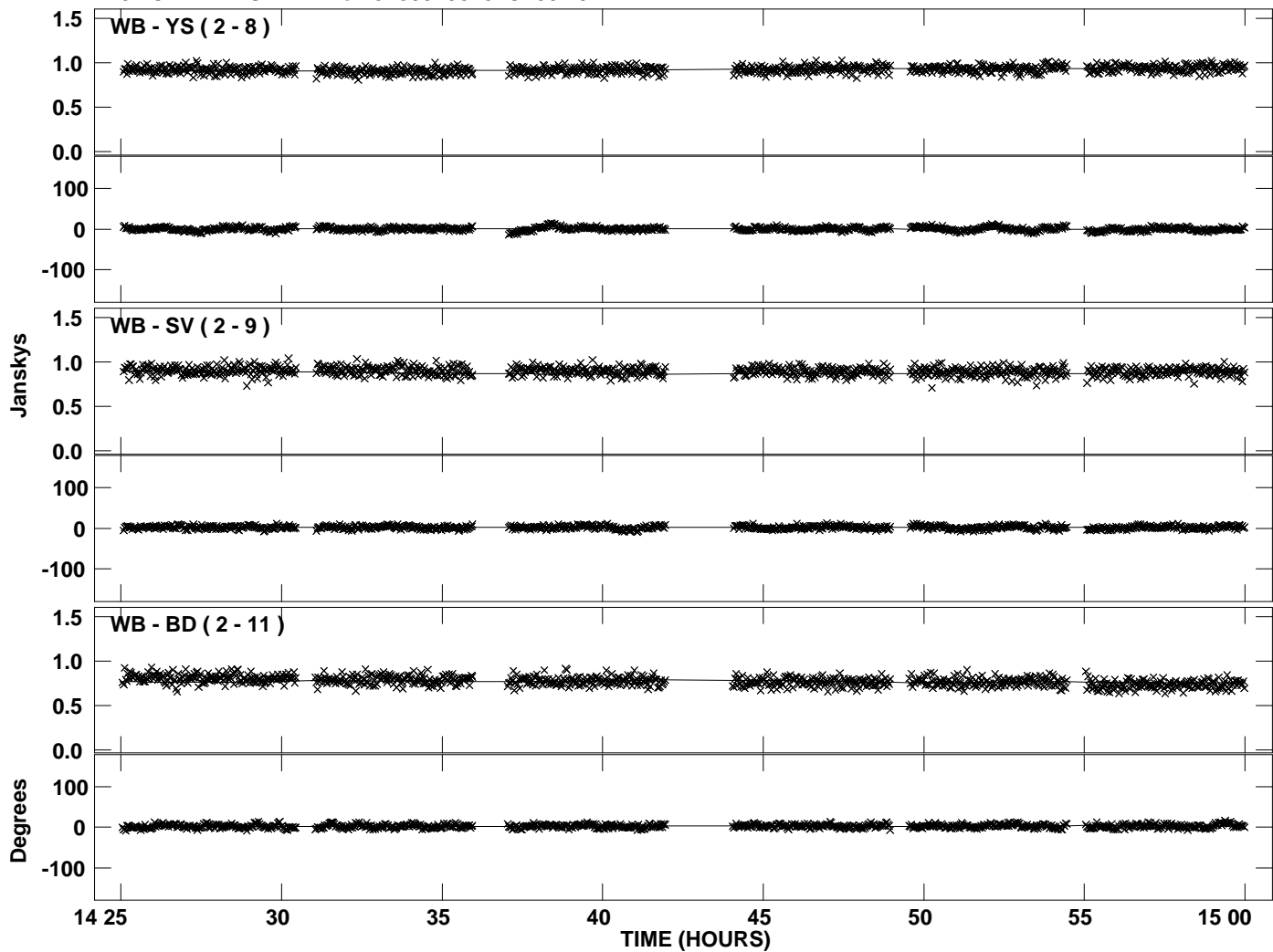




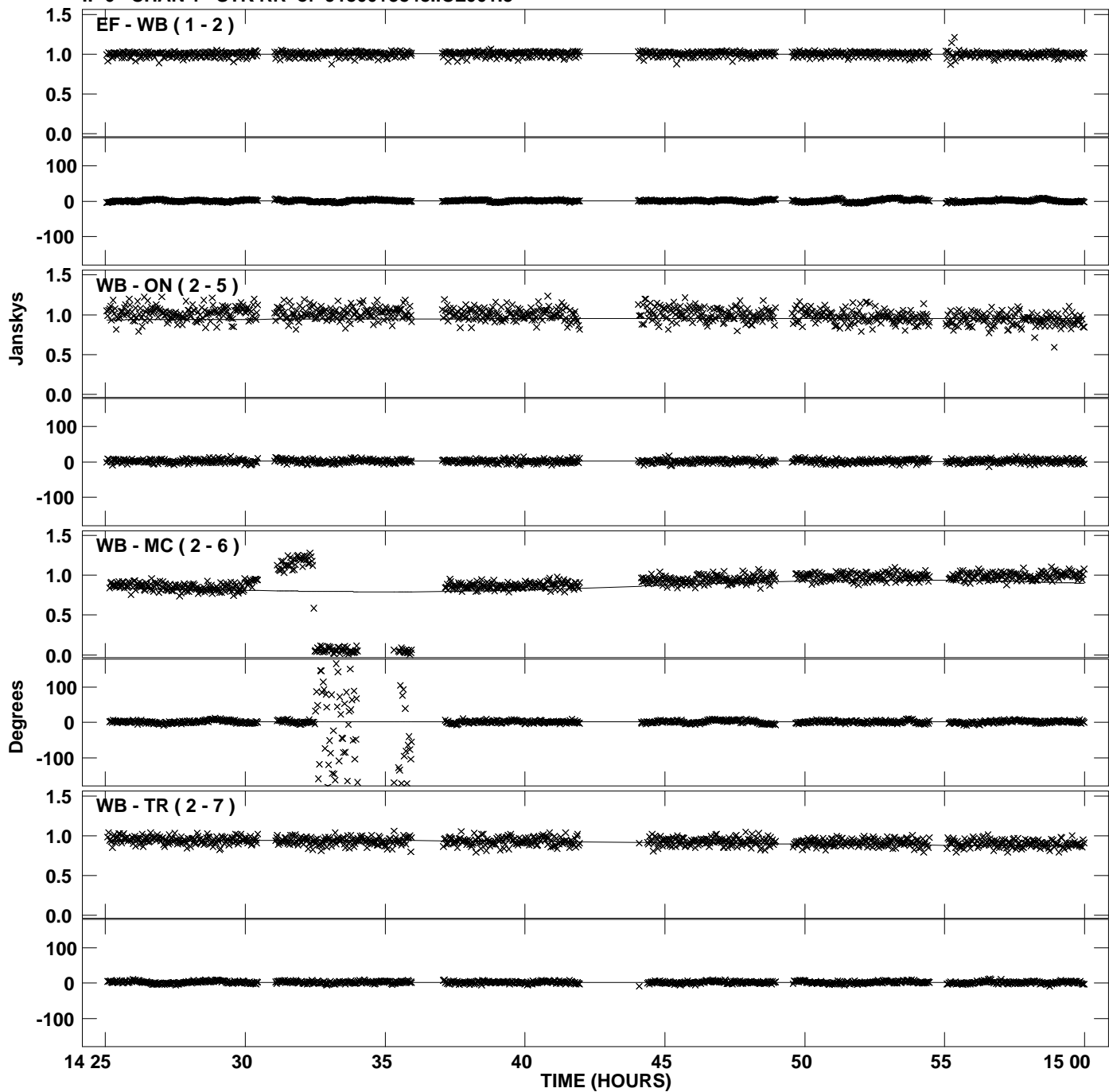
Plot file version 25 created 02-FEB-2011 18:37:42  
Amplitude and Phase vs Time for J1800+3848.MULTI.1 CL # 3  
IF 5 CHAN 1 STK RR of J1800+3848.ICL001.3



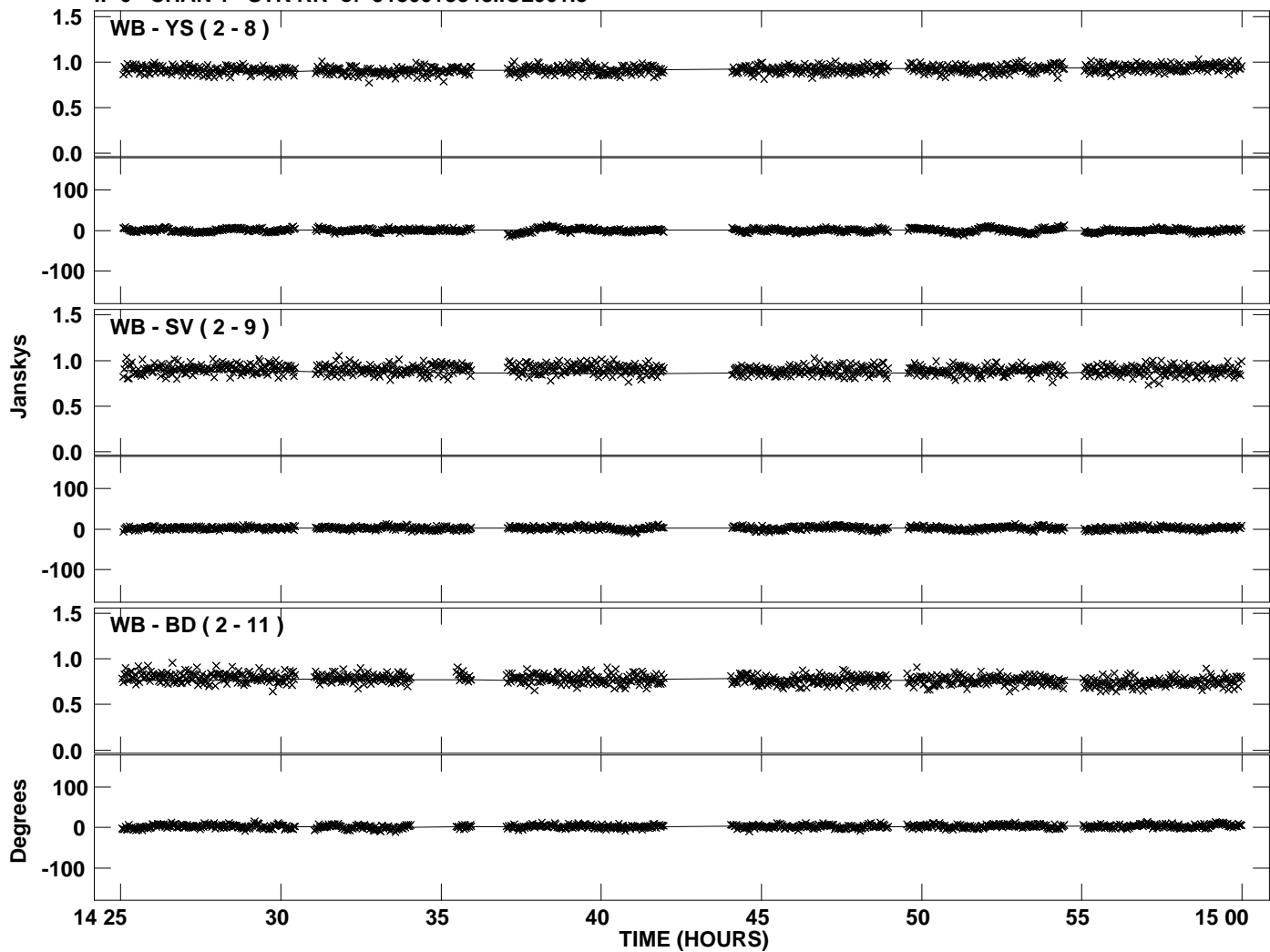
PLot file version 26 created 02-FEB-2011 18:37:42  
Amplitude andPhase vs Time for J1800+3848.MULTI.1 CL # 3  
IF 5 CHAN 1 STK RR of J1800+3848.ICL001.3



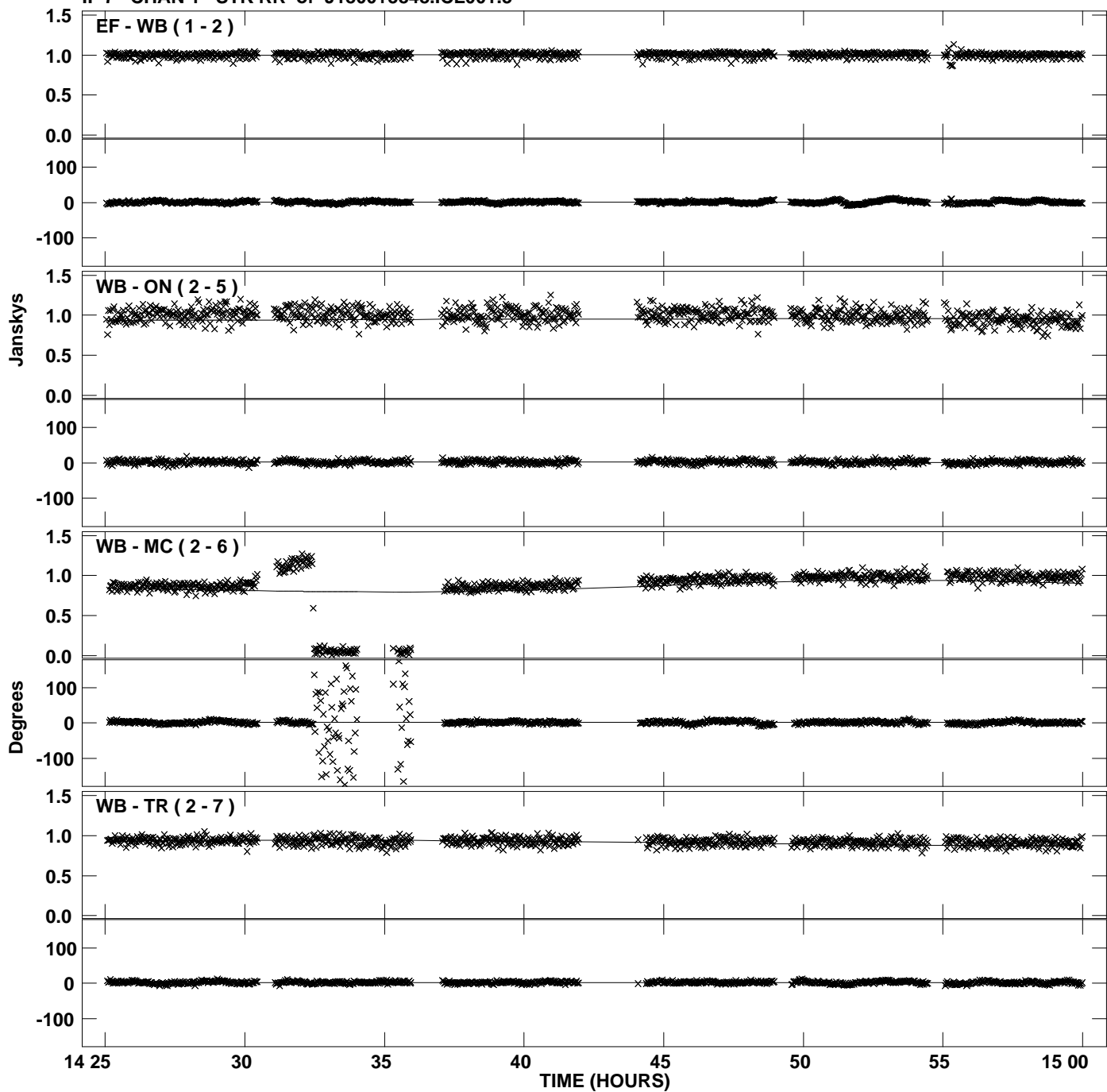
Plot file version 27 created 02-FEB-2011 18:37:42  
Amplitude and Phase vs Time for J1800+3848.MULTI.1 CL # 3  
IF 6 CHAN 1 STK RR of J1800+3848.ICL001.3



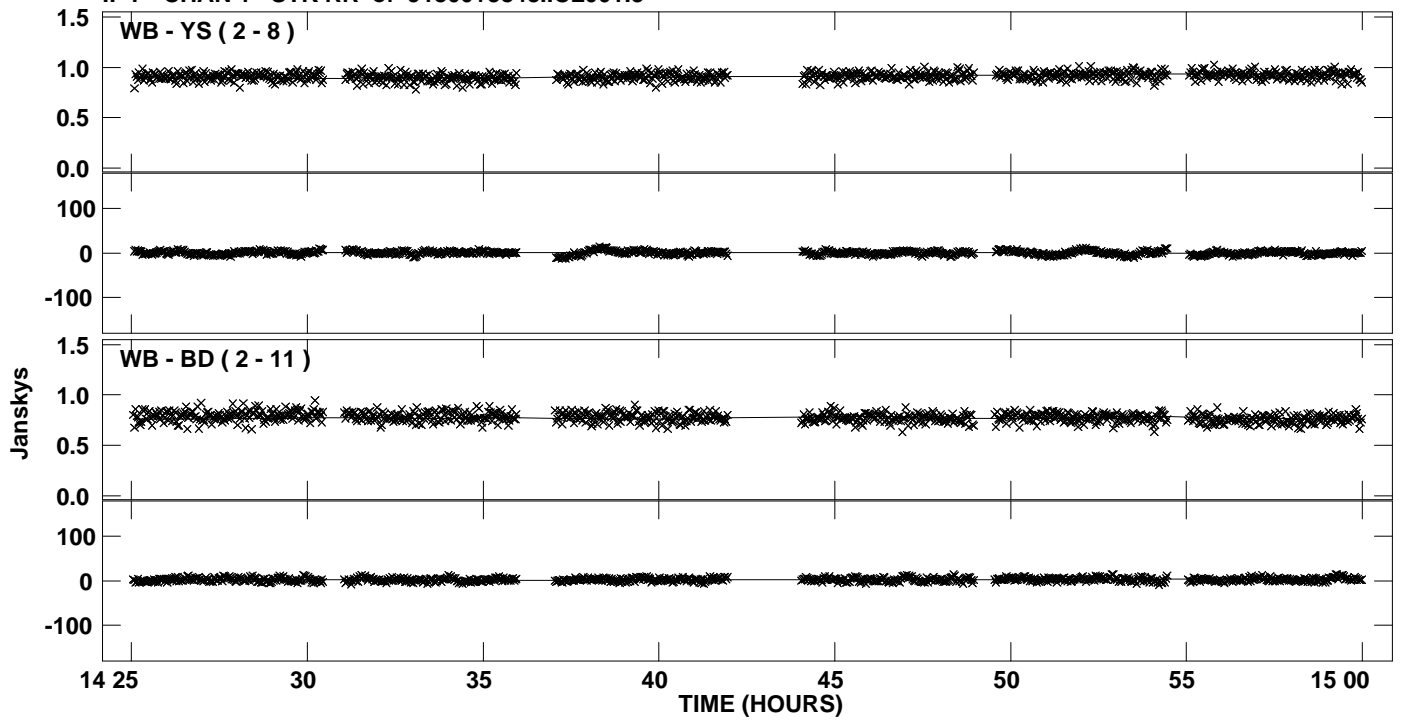
PLot file version 28 created 02-FEB-2011 18:37:42  
Amplitude andPhase vs Time for J1800+3848.MULTI.1 CL # 3  
IF 6 CHAN 1 STK RR of J1800+3848.ICL001.3



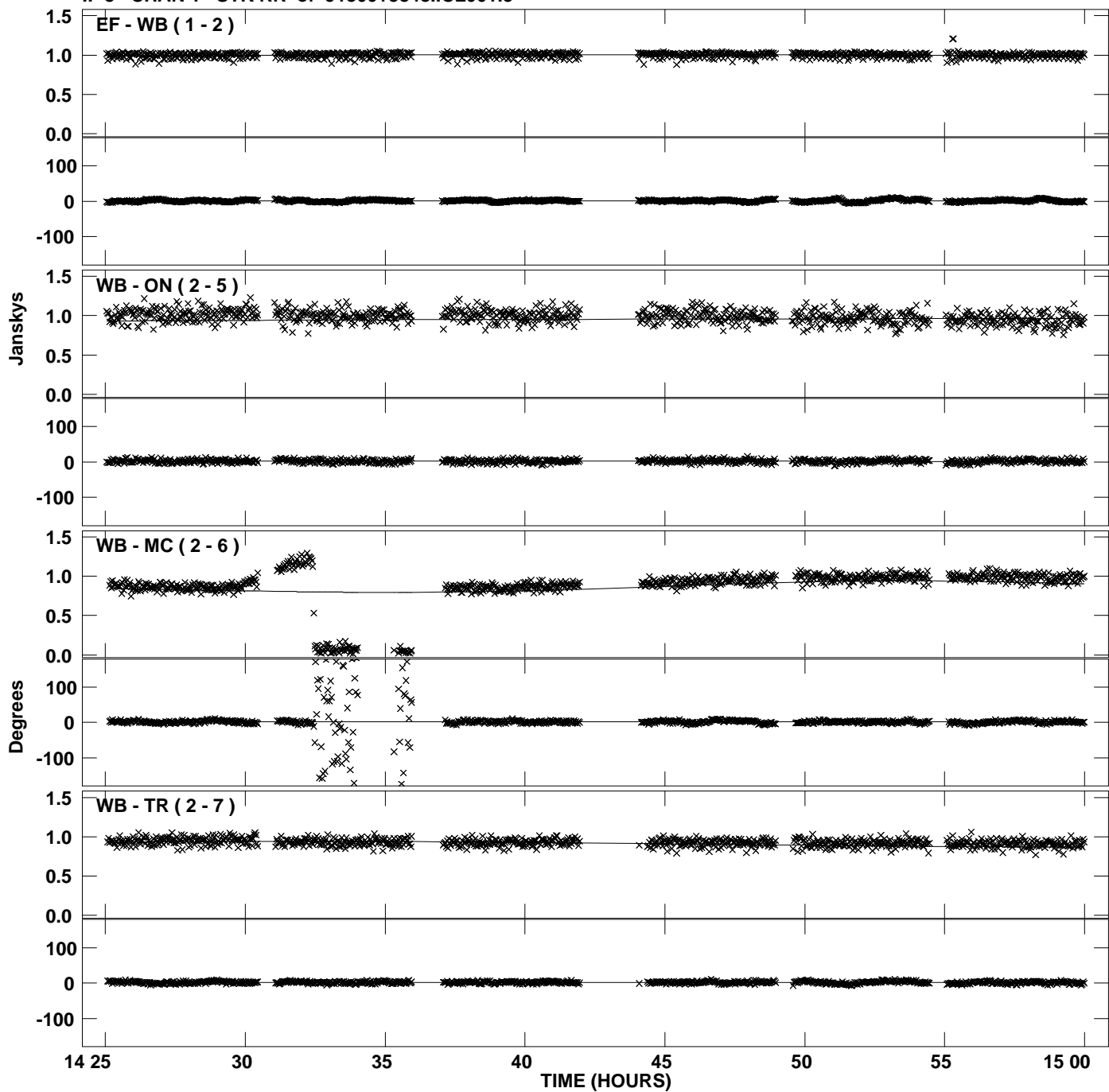
Plot file version 29 created 02-FEB-2011 18:37:42  
Amplitude and Phase vs Time for J1800+3848.MULTI.1 CL # 3  
IF 7 CHAN 1 STK RR of J1800+3848.ICL001.3



PLot file version 30 created 02-FEB-2011 18:37:42  
Amplitude andPhase vs Time for J1800+3848.MULTI.1 CL # 3  
IF 7 CHAN 1 STK RR of J1800+3848.ICL001.3



Plot file version 31 created 02-FEB-2011 18:37:43  
Amplitude and Phase vs Time for J1800+3848.MULTI.1 CL # 3  
IF 8 CHAN 1 STK RR of J1800+3848.ICL001.3



PLot file version 32 created 02-FEB-2011 18:37:43  
Amplitude andPhase vs Time for J1800+3848.MULTI.1 CL # 3  
IF 8 CHAN 1 STK RR of J1800+3848.ICL001.3

