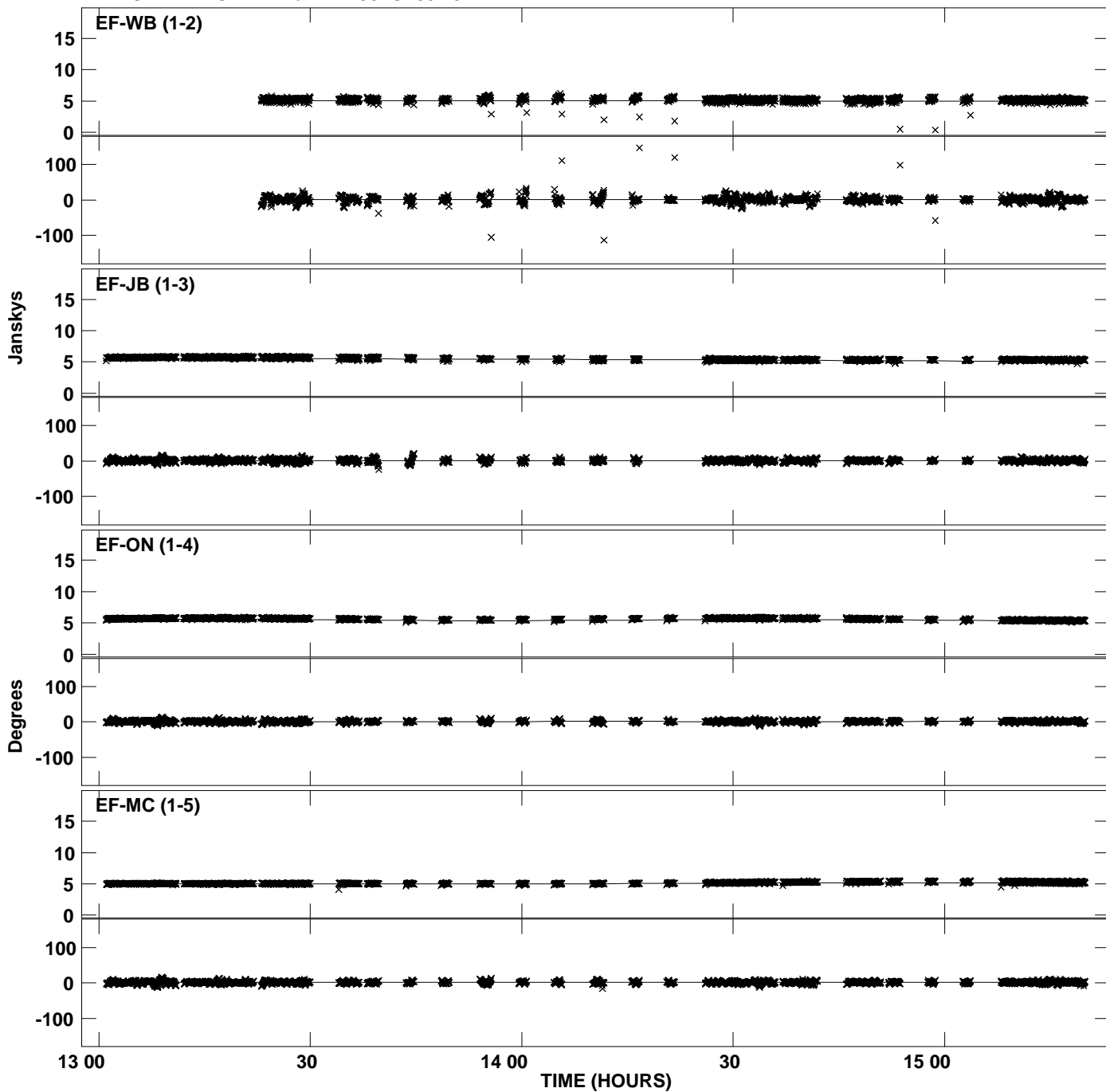
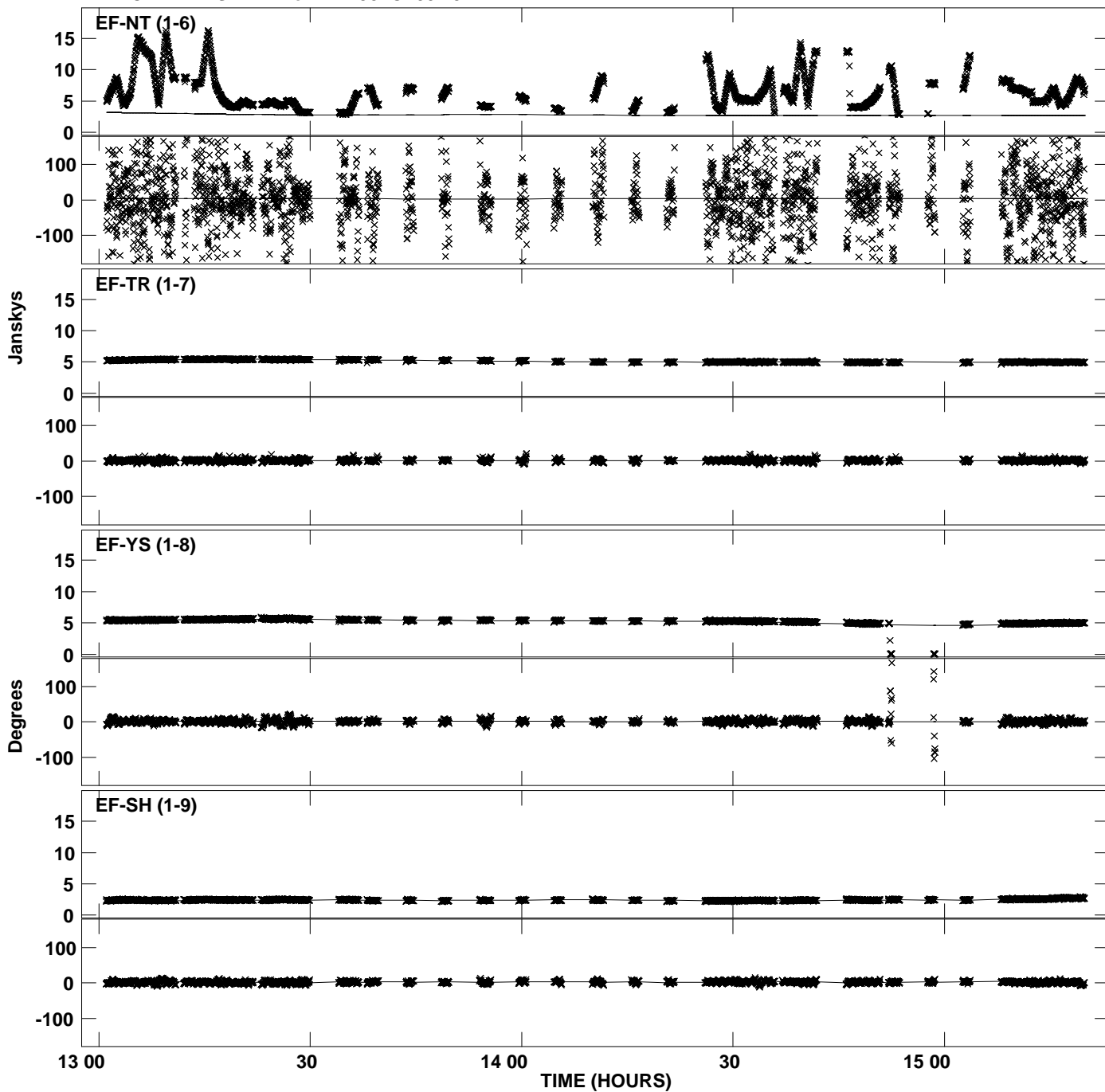


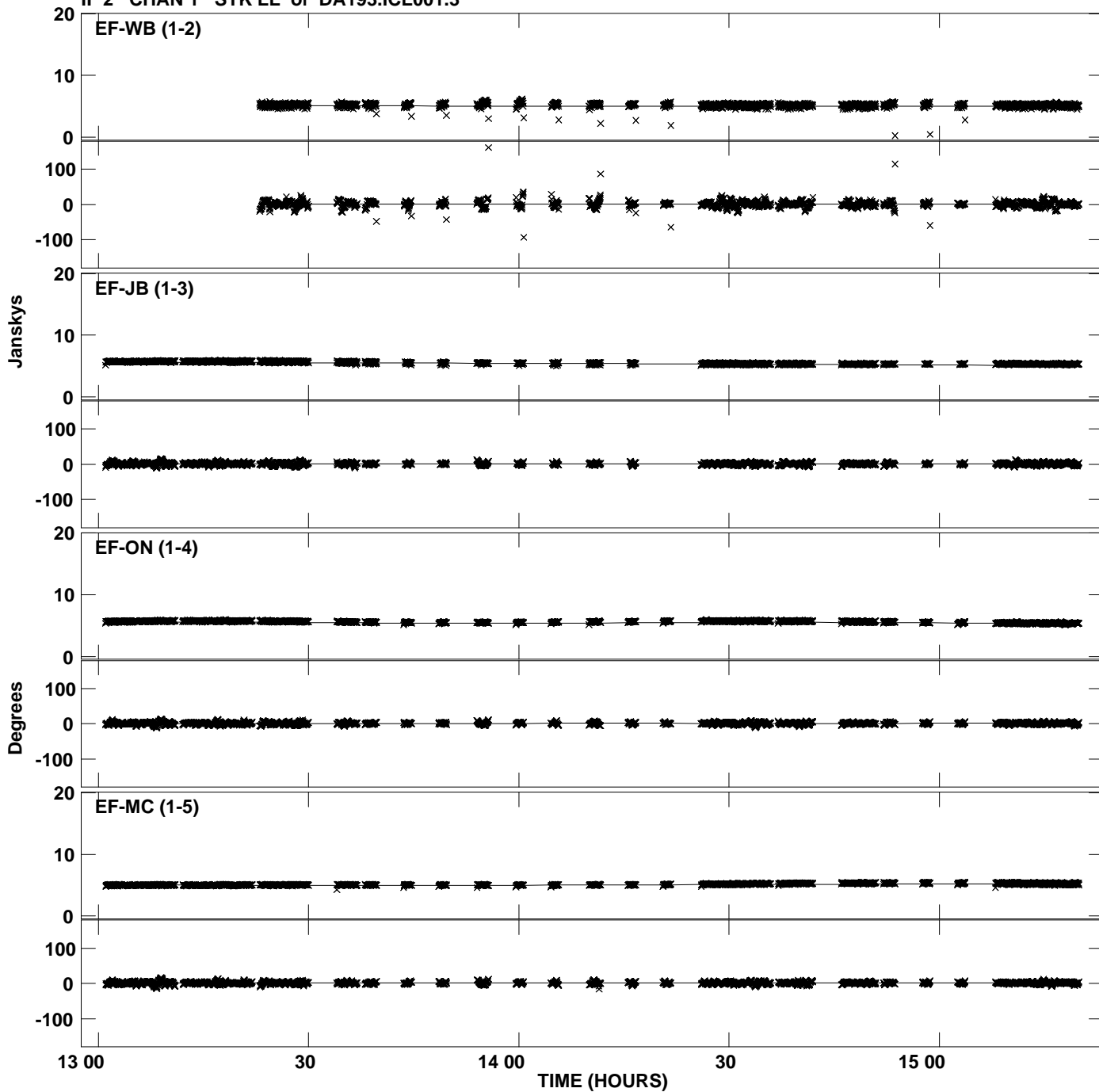
Plot file version 1 created 03-JUN-2010 17:21:32
Amplitude andPhase vs Time for DA193.MULTI.1 CL # 3
IF 1 CHAN 1 STK LL of DA193.ICL001.3



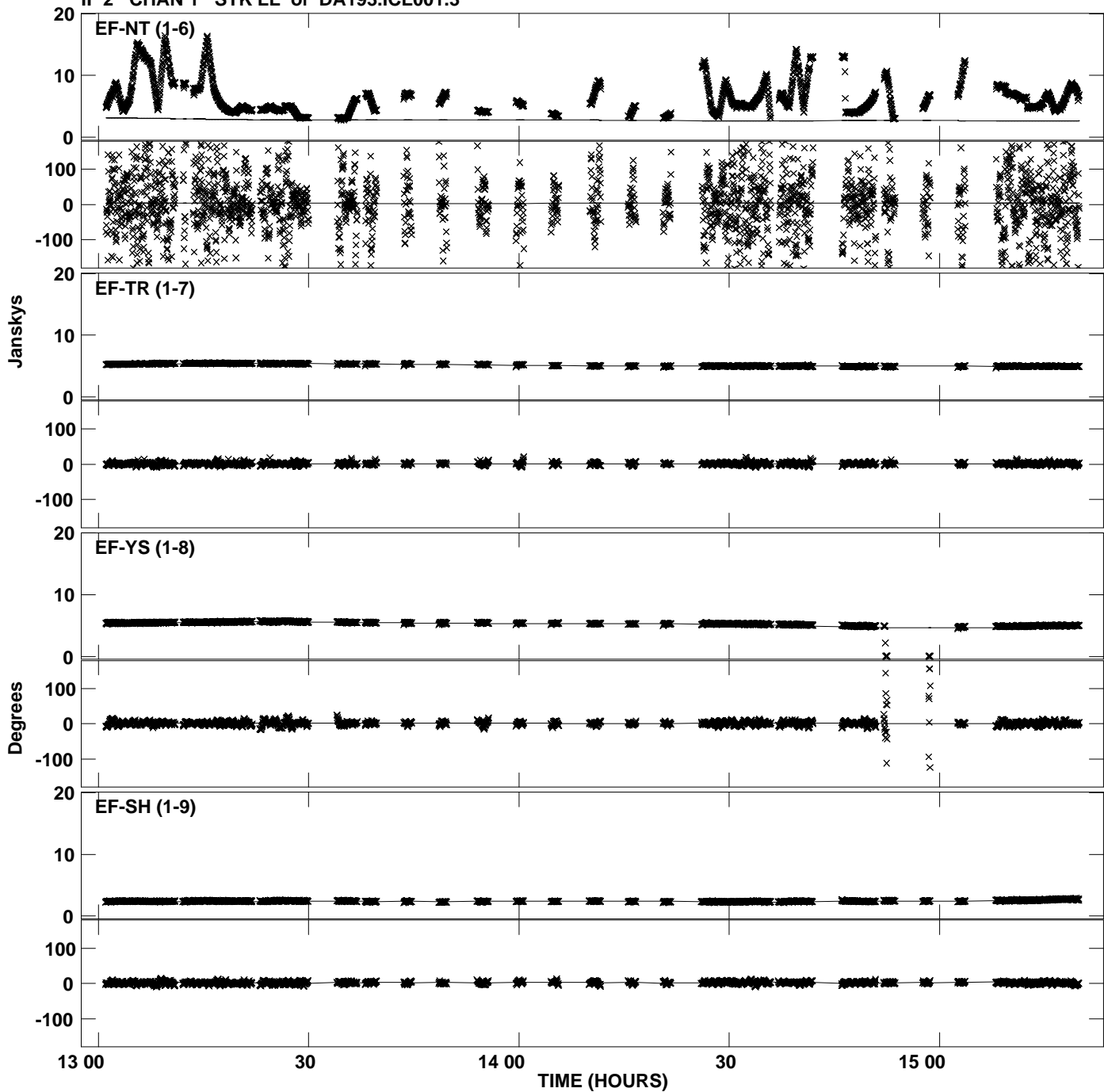
Plot file version 2 created 03-JUN-2010 17:21:32
Amplitude and Phase vs Time for DA193.MULTI.1 CL # 3
IF 1 CHAN 1 STK LL of DA193.ICL001.3



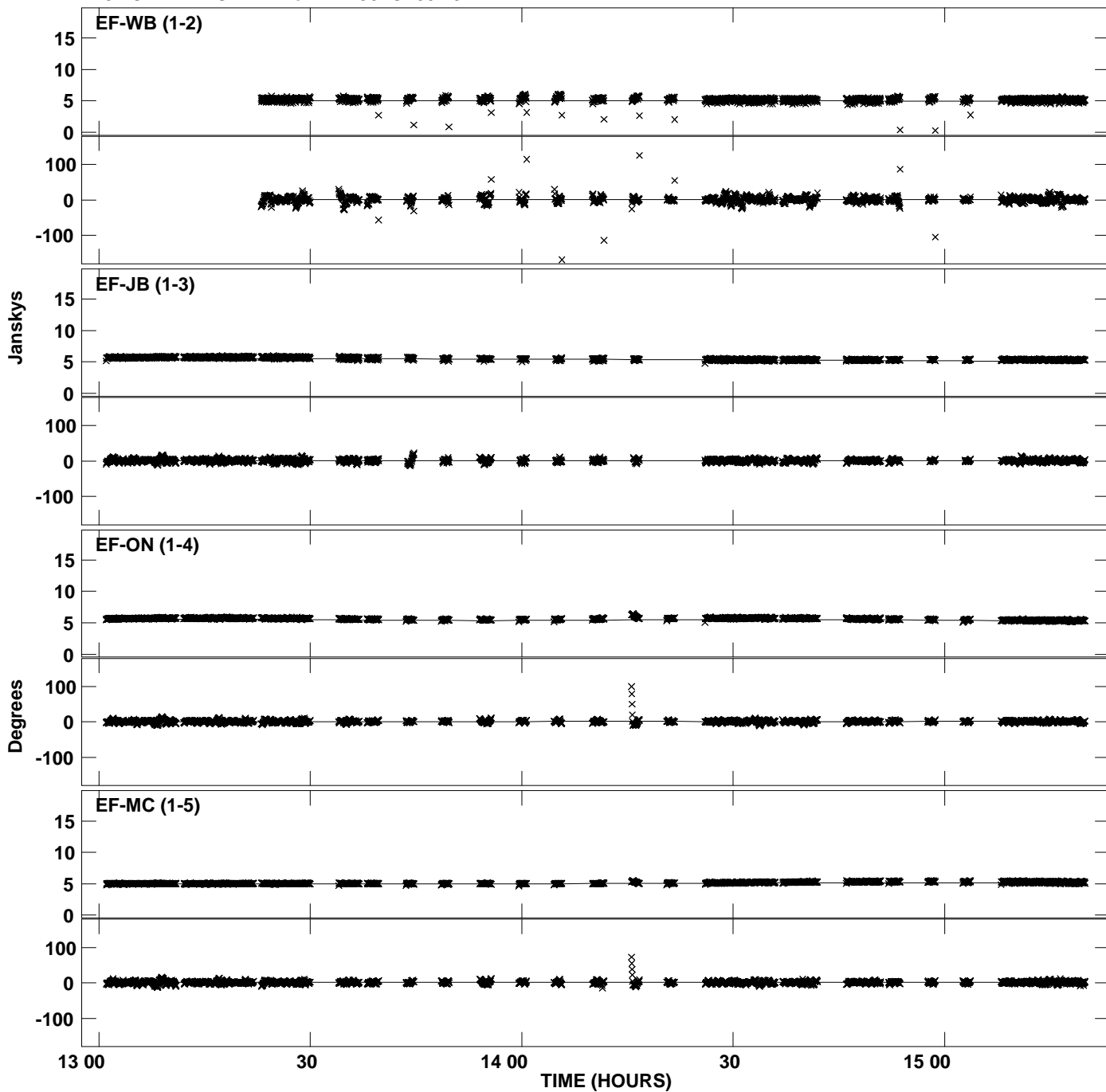
Plot file version 3 created 03-JUN-2010 17:21:33
Amplitude andPhase vs Time for DA193.MULTI.1 CL # 3
IF 2 CHAN 1 STK LL of DA193.ICL001.3



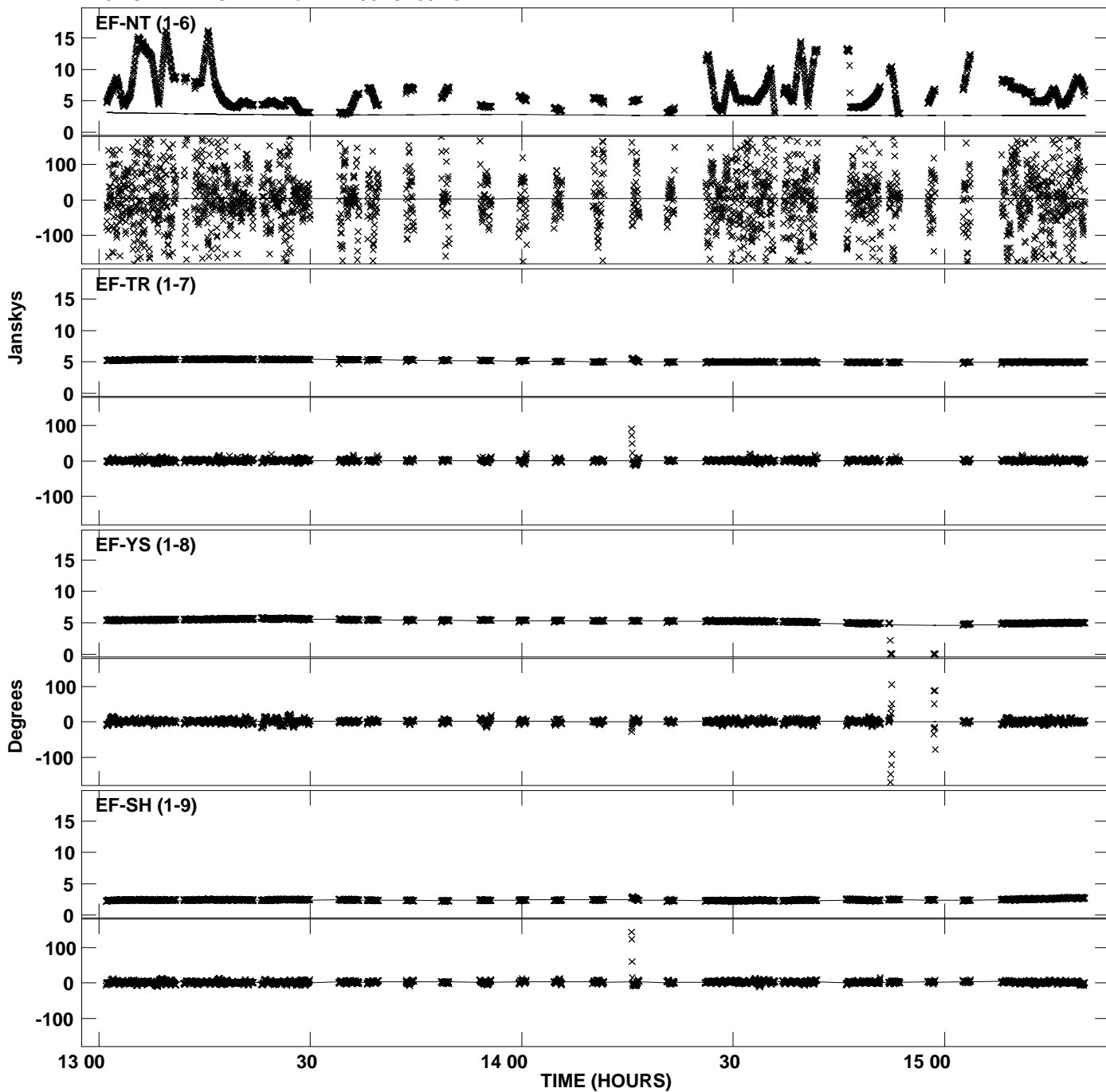
Plot file version 4 created 03-JUN-2010 17:21:33
Amplitude and Phase vs Time for DA193.MULTI.1 CL # 3
IF 2 CHAN 1 STK LL of DA193.ICL001.3



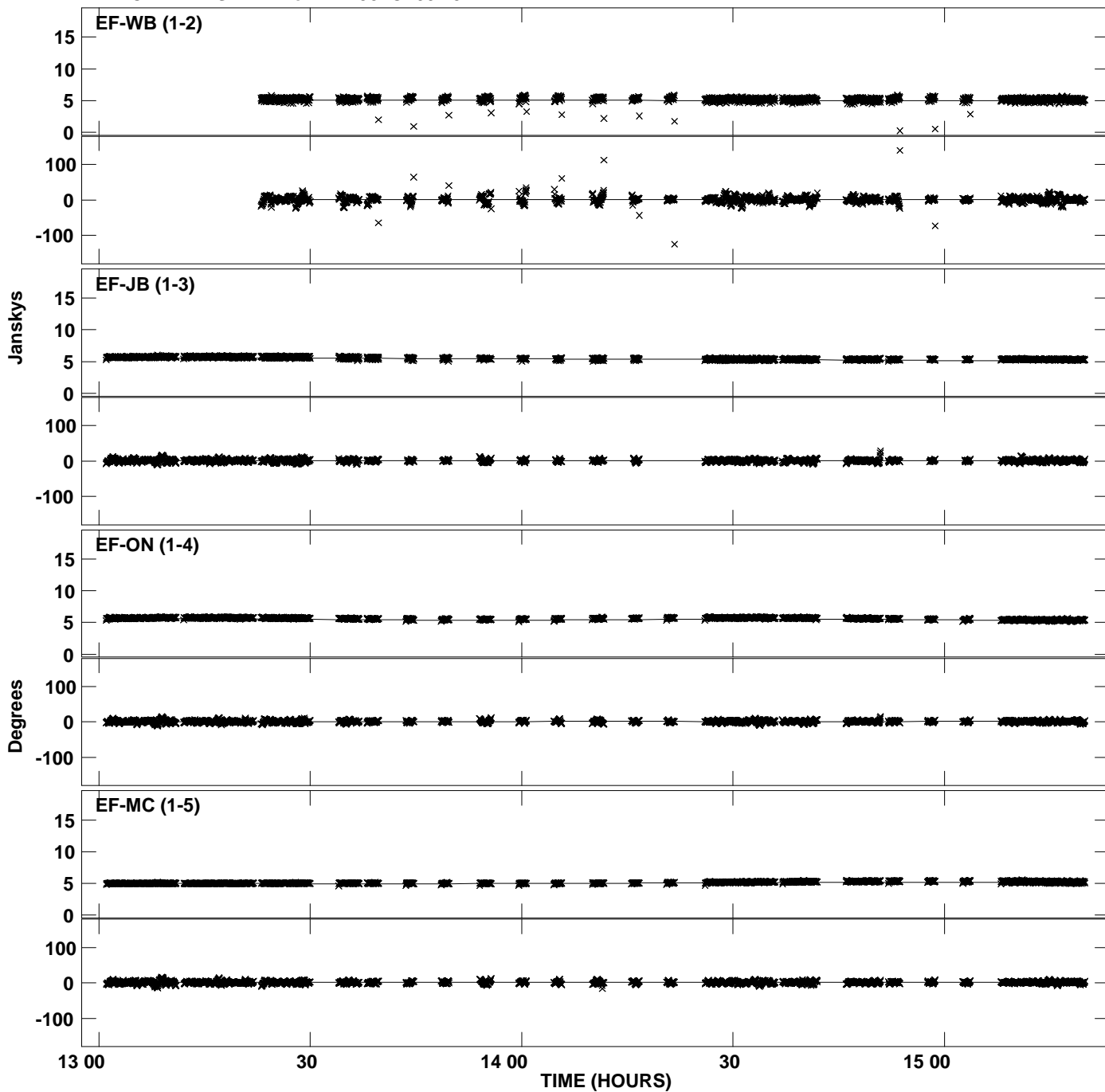
Plot file version 5 created 03-JUN-2010 17:21:33
Amplitude andPhase vs Time for DA193.MULTI.1 CL # 3
IF 3 CHAN 1 STK LL of DA193.ICL001.3



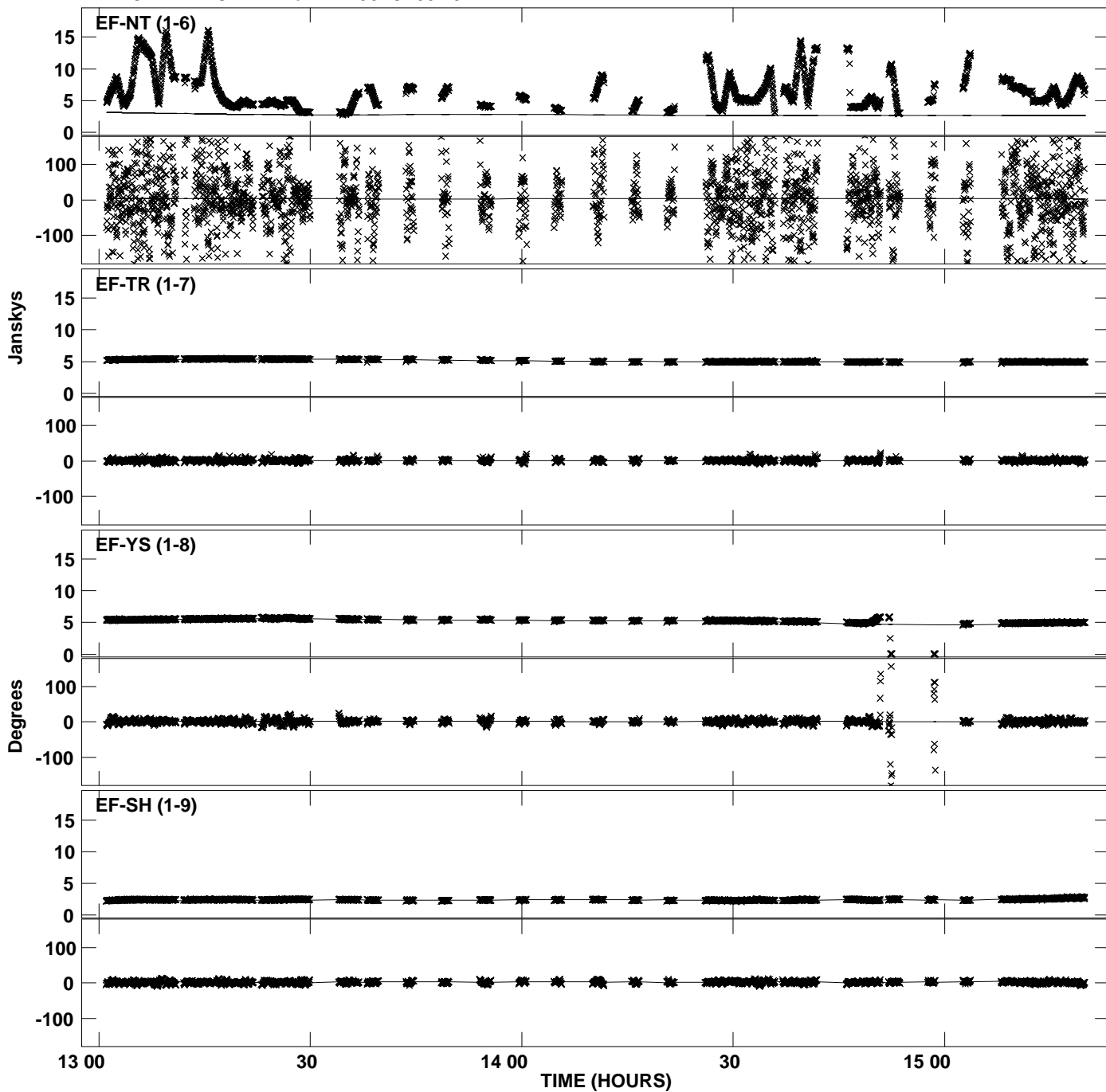
Plot file version 6 created 03-JUN-2010 17:21:33
Amplitude andPhase vs Time for DA193.MULTI.1 CL # 3
IF 3 CHAN 1 STK LL of DA193.ICL001.3



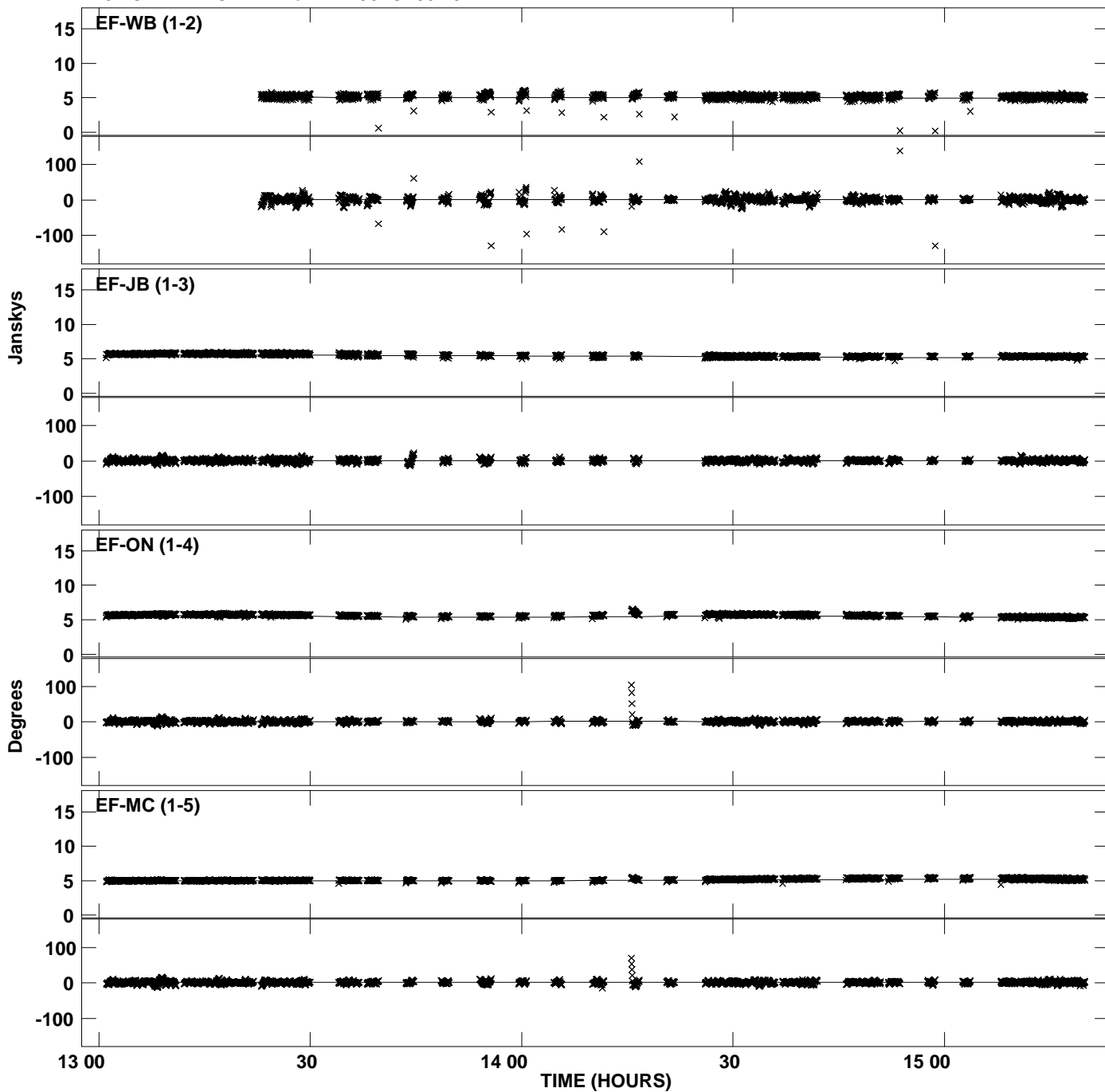
Plot file version 7 created 03-JUN-2010 17:21:34
Amplitude andPhase vs Time for DA193.MULTI.1 CL # 3
IF 4 CHAN 1 STK LL of DA193.ICL001.3



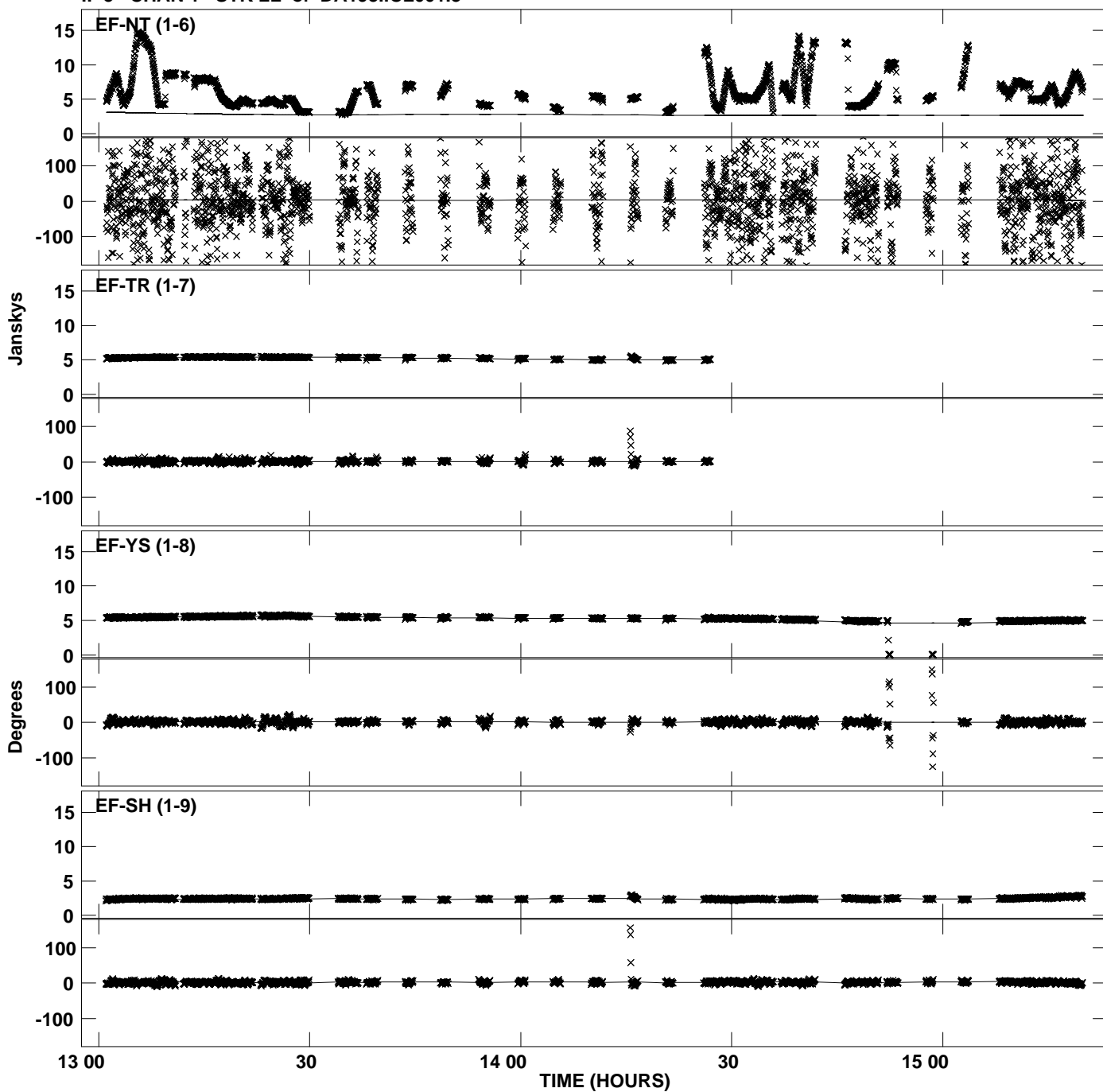
Plot file version 8 created 03-JUN-2010 17:21:34
Amplitude and Phase vs Time for DA193.MULTI.1 CL # 3
IF 4 CHAN 1 STK LL of DA193.ICL001.3



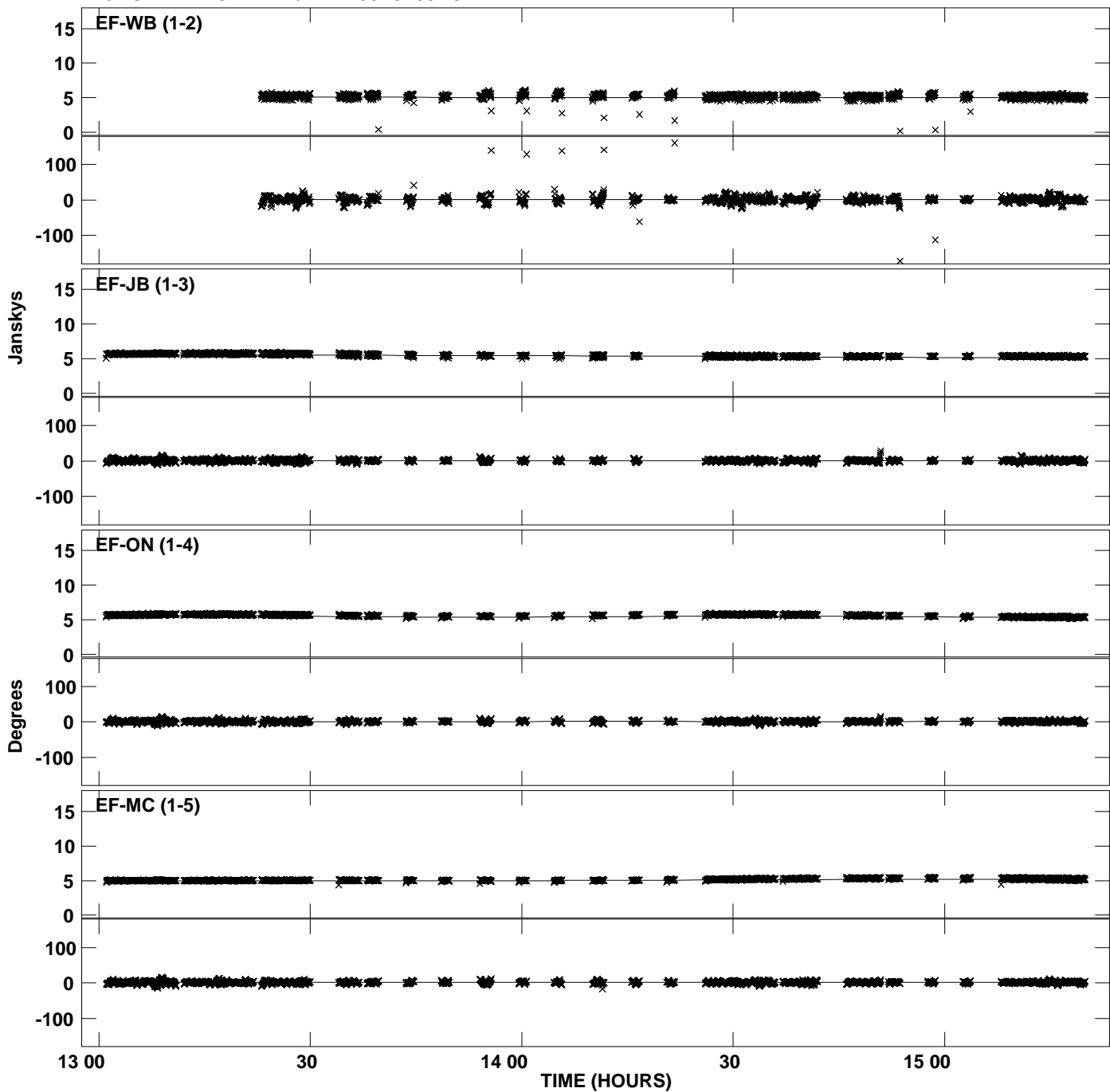
Plot file version 9 created 03-JUN-2010 17:21:35
Amplitude andPhase vs Time for DA193.MULTI.1 CL # 3
IF 5 CHAN 1 STK LL of DA193.ICL001.3



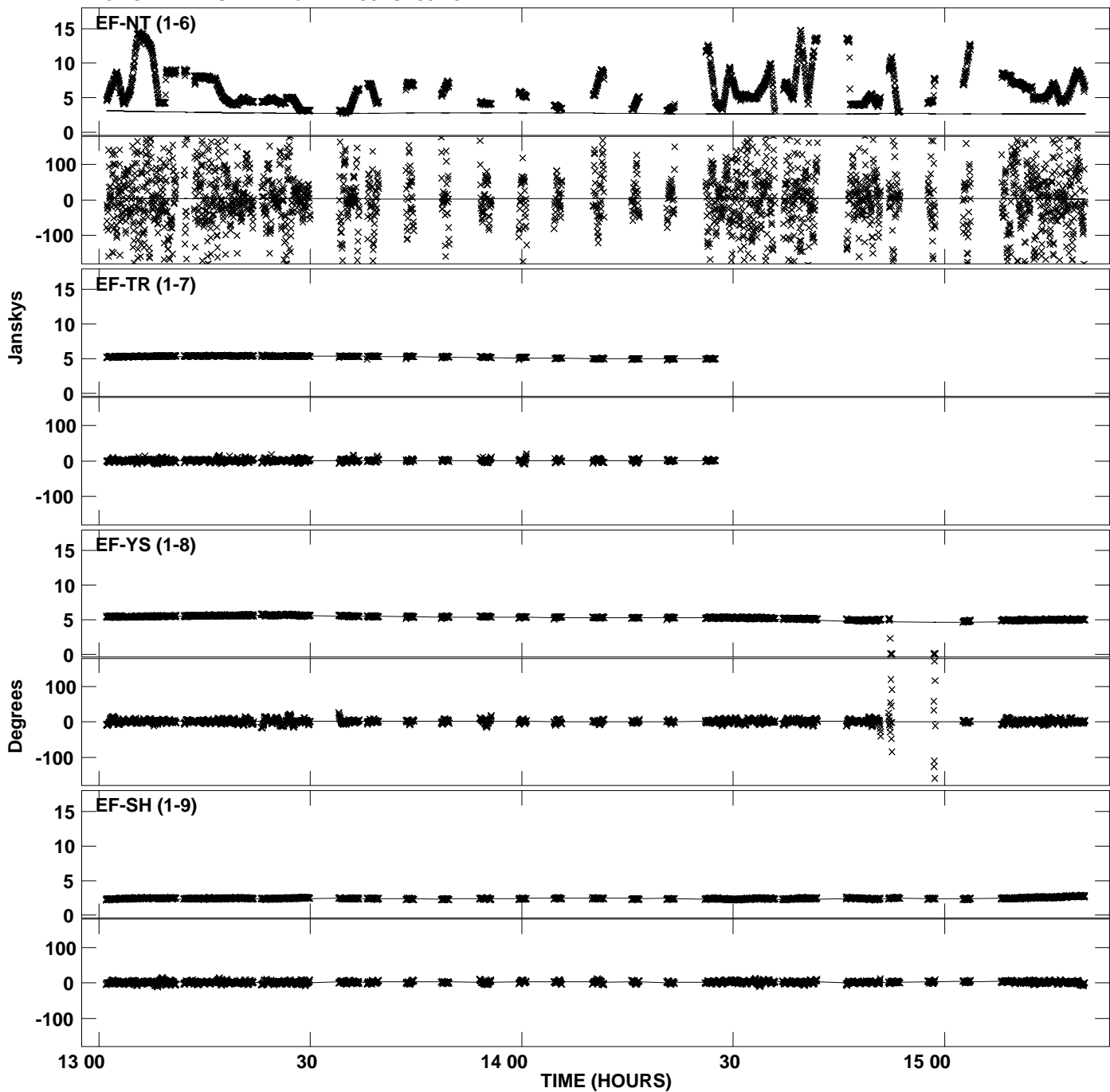
Plot file version 10 created 03-JUN-2010 17:21:35
Amplitude and Phase vs Time for DA193.MULTI.1 CL # 3
IF 5 CHAN 1 STK LL of DA193.ICL001.3



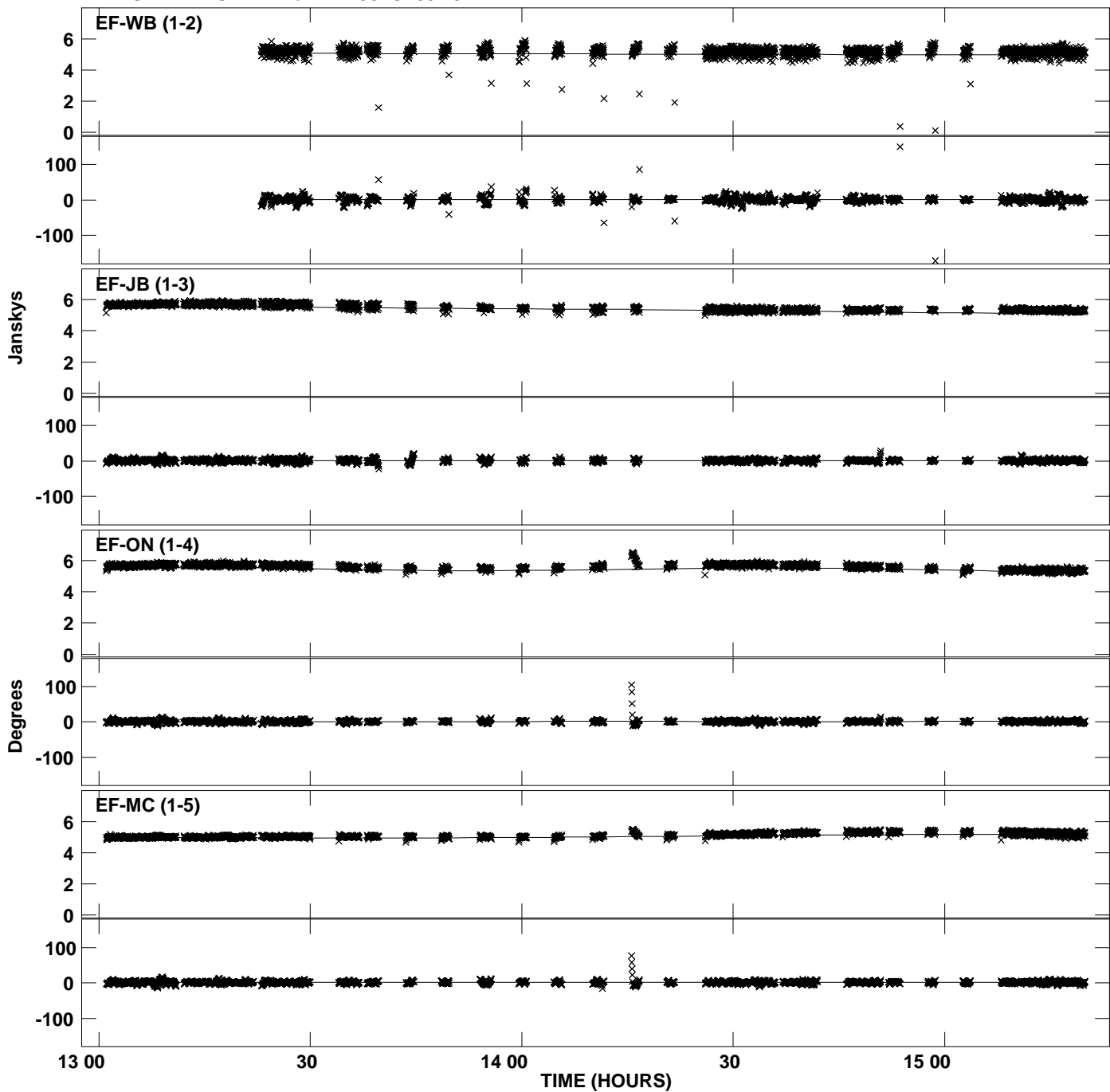
Plot file version 11 created 03-JUN-2010 17:21:35
Amplitude andPhase vs Time for DA193.MULTI.1 CL # 3
IF 6 CHAN 1 STK LL of DA193.ICL001.3



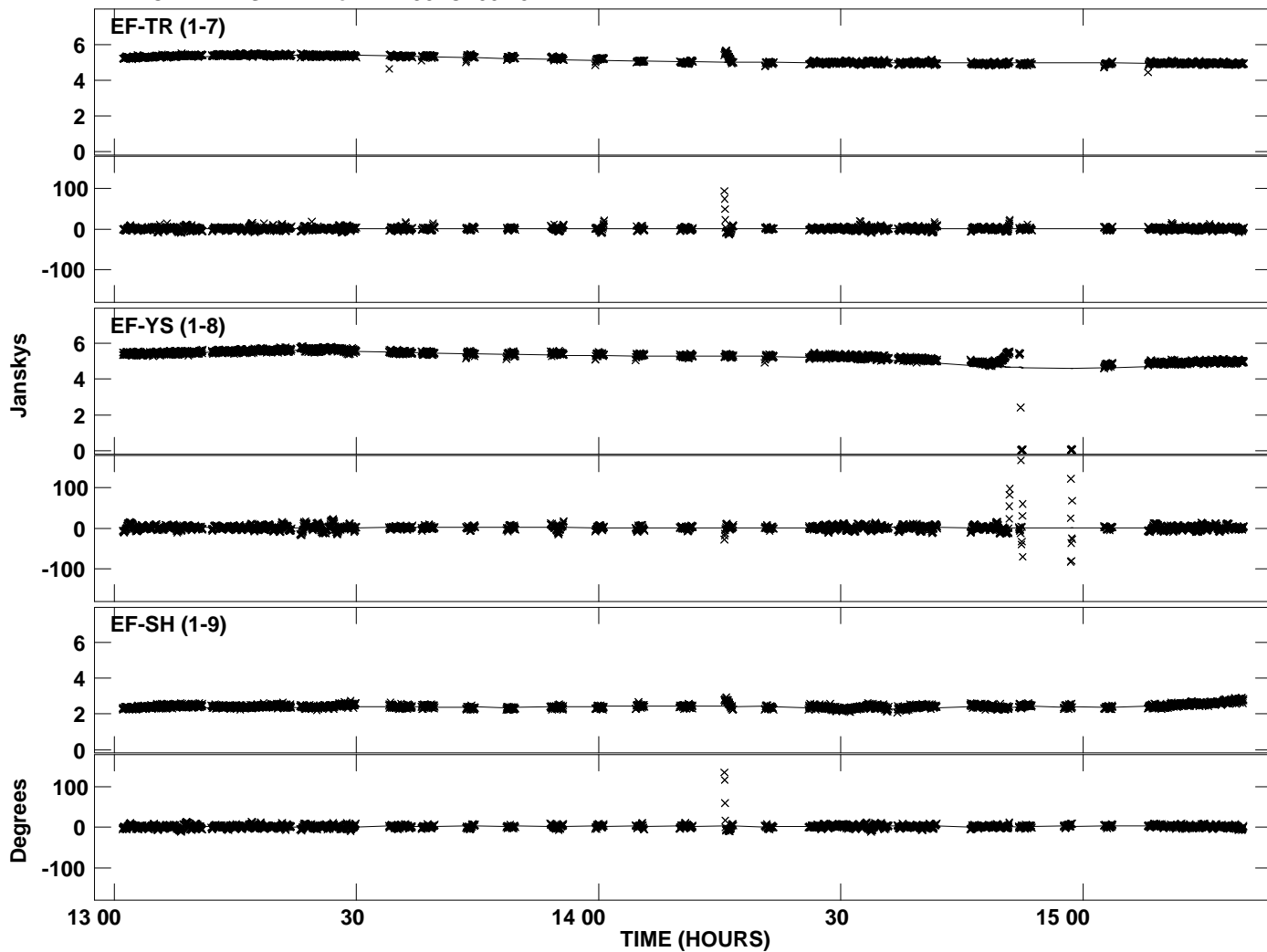
Plot file version 12 created 03-JUN-2010 17:21:35
Amplitude andPhase vs Time for DA193.MULTI.1 CL # 3
IF 6 CHAN 1 STK LL of DA193.ICL001.3



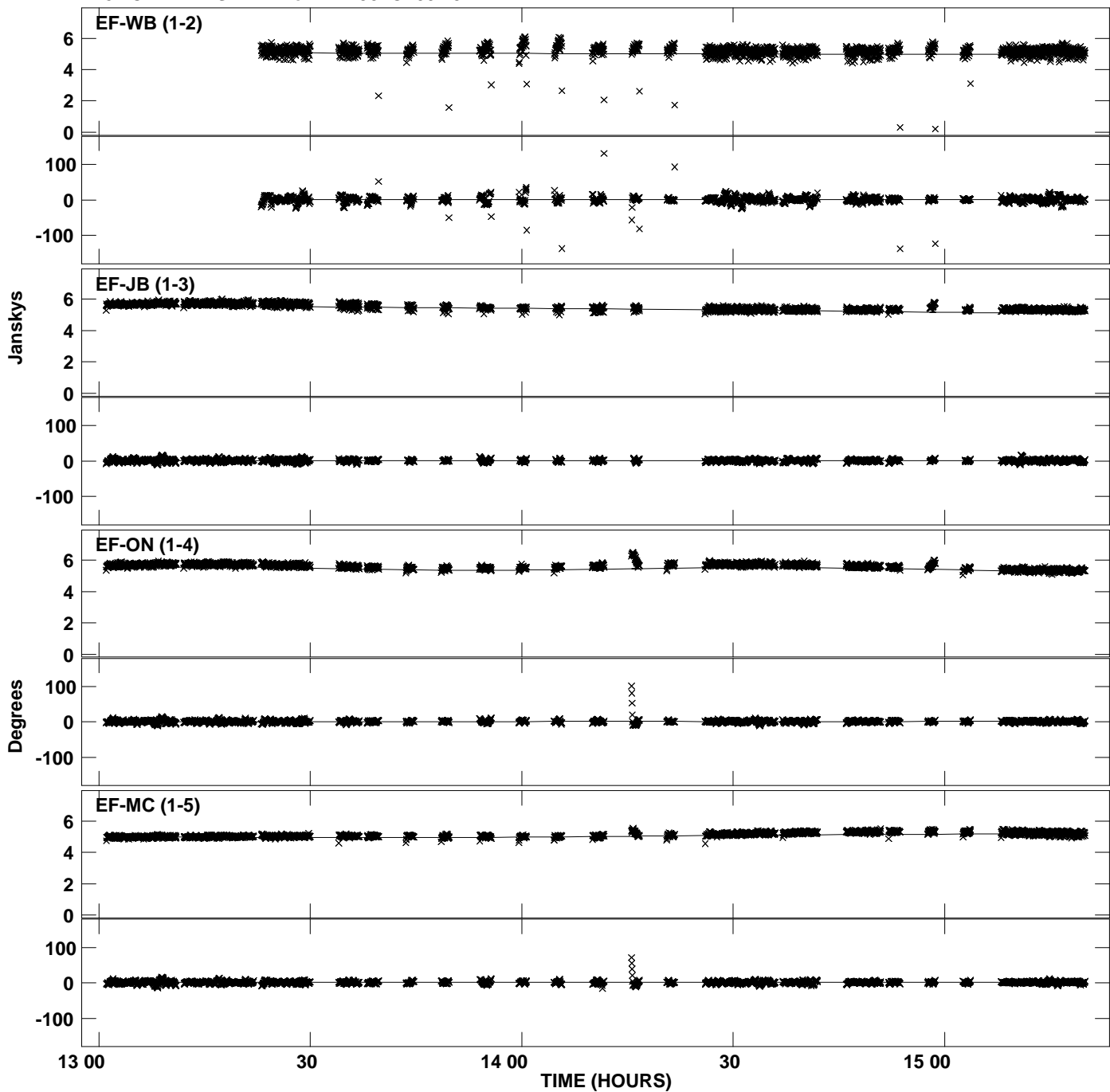
Plot file version 13 created 03-JUN-2010 17:21:36
Amplitude and Phase vs Time for DA193.MULTI.1 CL # 3
IF 7 CHAN 1 STK LL of DA193.ICL001.3



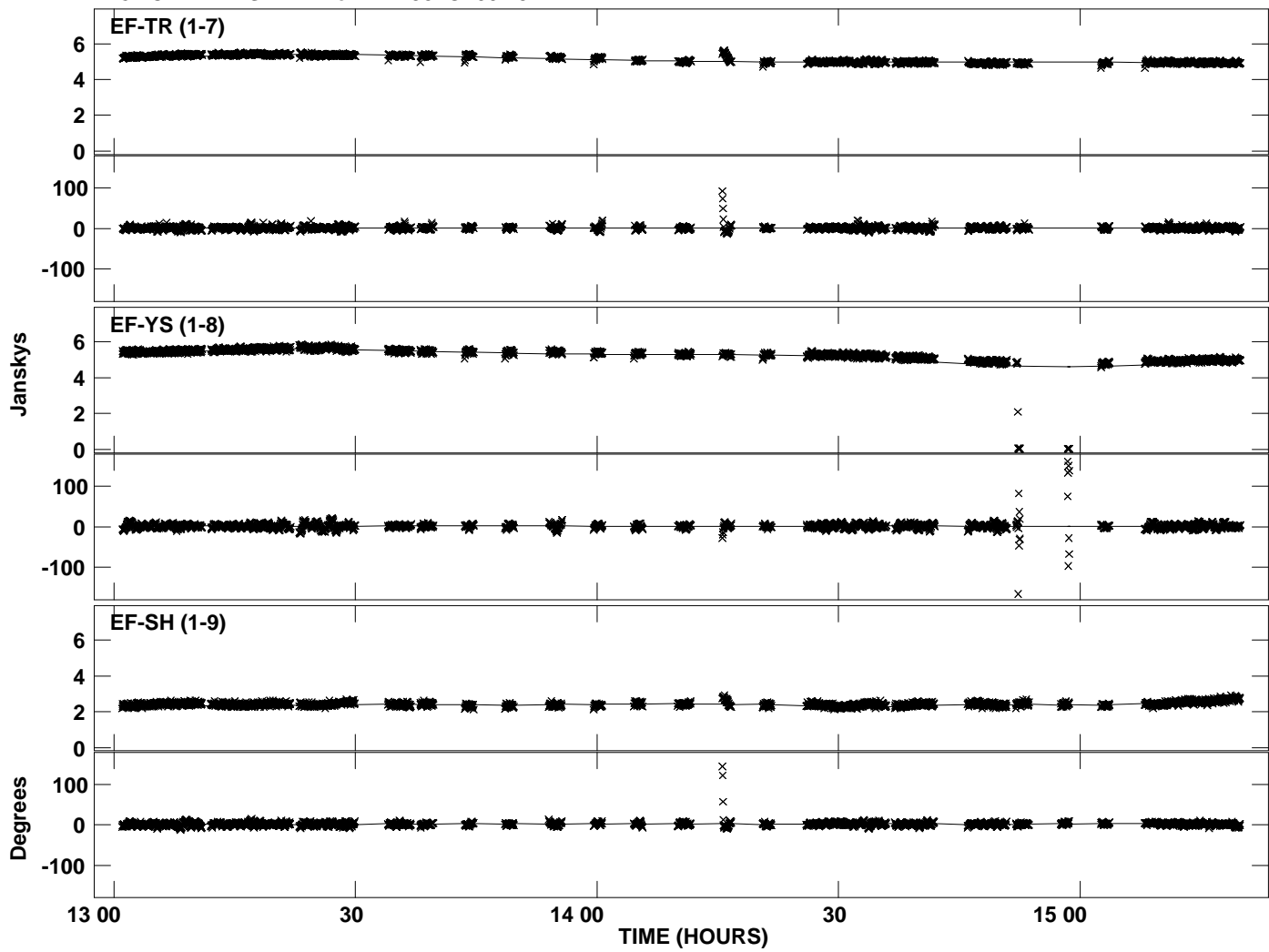
Plot file version 14 created 03-JUN-2010 17:21:36
Amplitude and Phase vs Time for DA193.MULTI.1 CL # 3
IF 7 CHAN 1 STK LL of DA193.ICL001.3



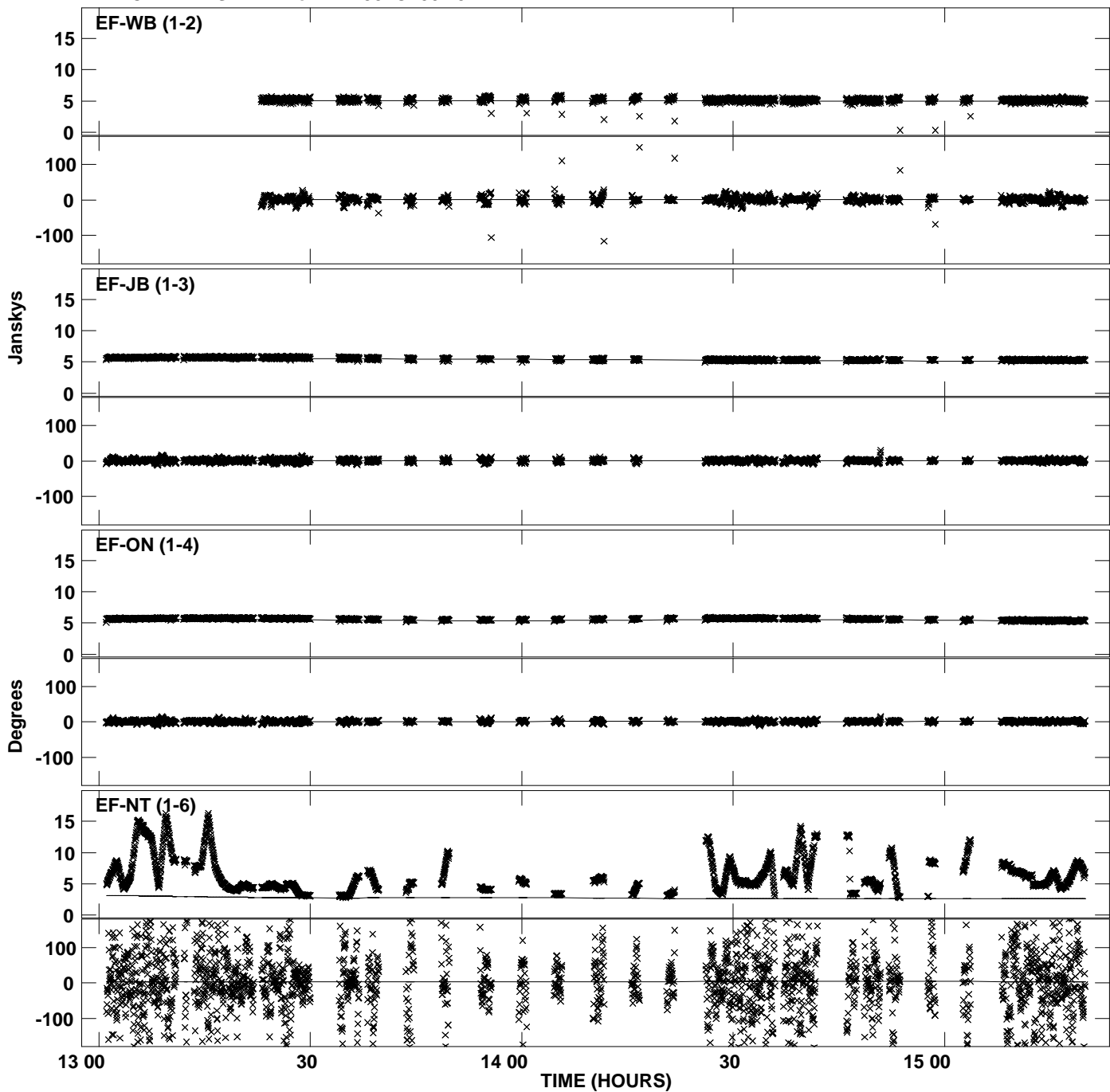
Plot file version 15 created 03-JUN-2010 17:21:36
Amplitude and Phase vs Time for DA193.MULTI.1 CL # 3
IF 8 CHAN 1 STK LL of DA193.ICL001.3



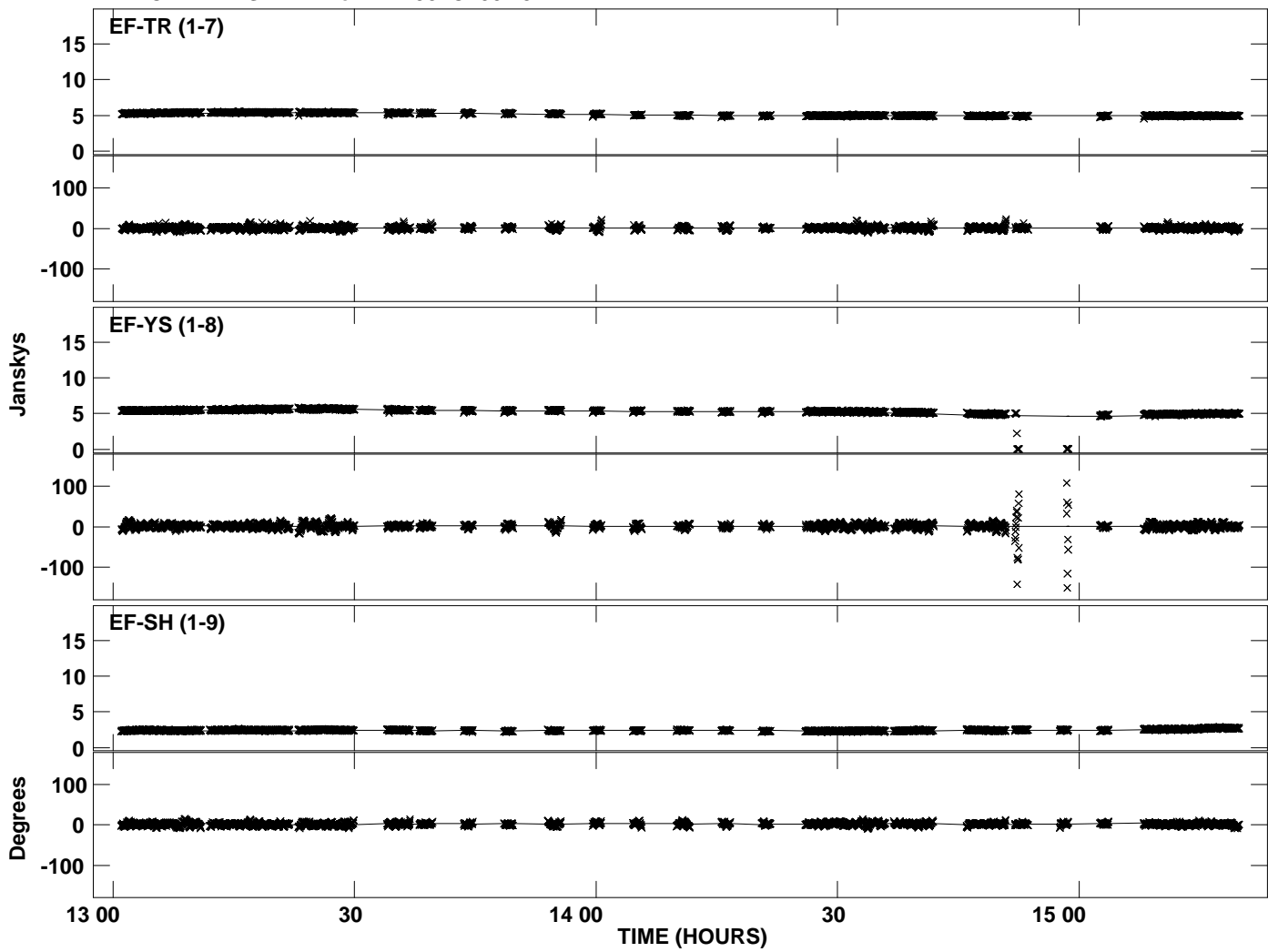
Plot file version 16 created 03-JUN-2010 17:21:37
Amplitude and Phase vs Time for DA193.MULTI.1 CL # 3
IF 8 CHAN 1 STK LL of DA193.ICL001.3



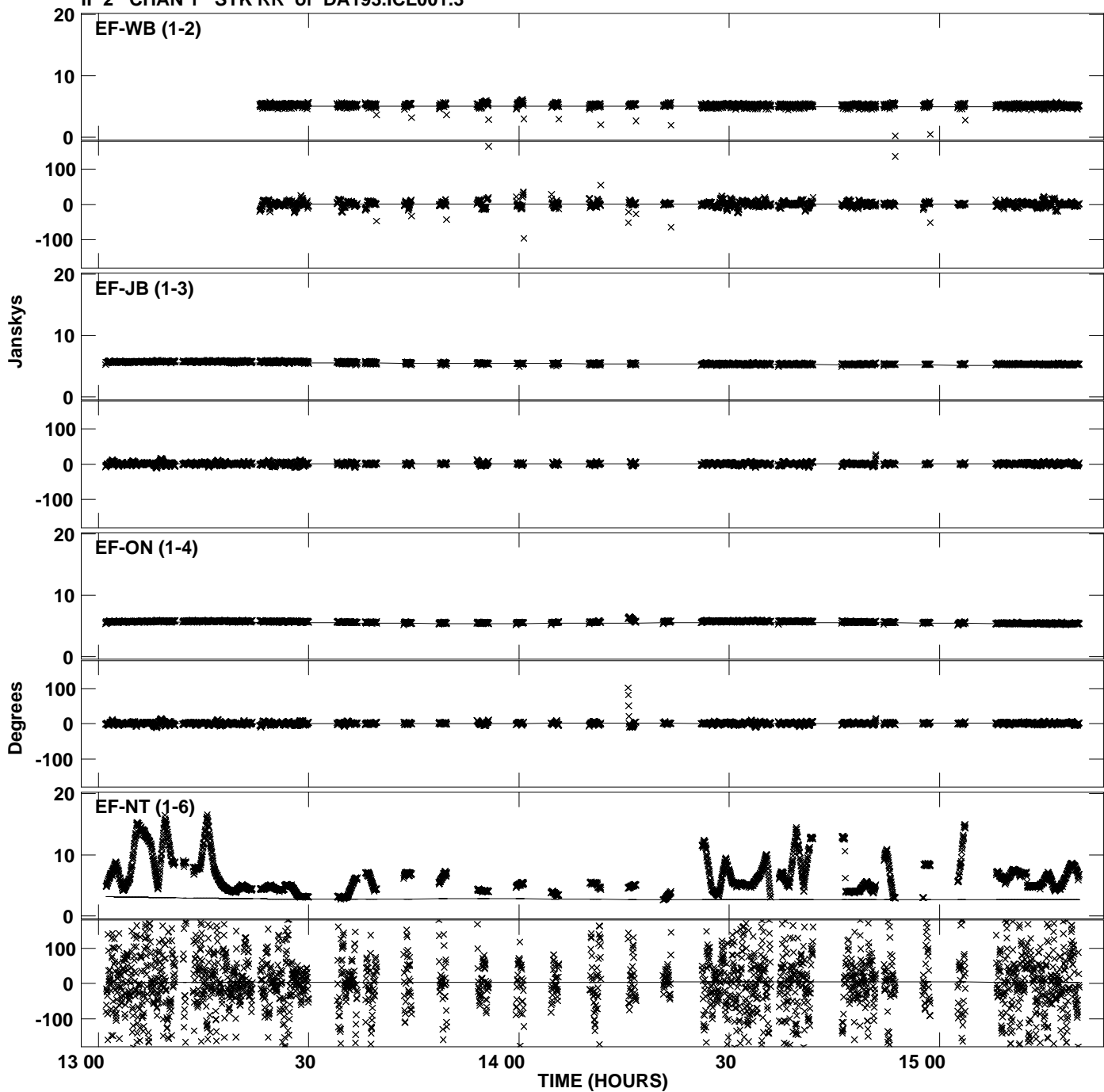
PLot file version 17 created 03-JUN-2010 17:21:37
Amplitude andPhase vs Time for DA193.MULTI.1 CL # 3
IF 1 CHAN 1 STK RR of DA193.ICL001.3



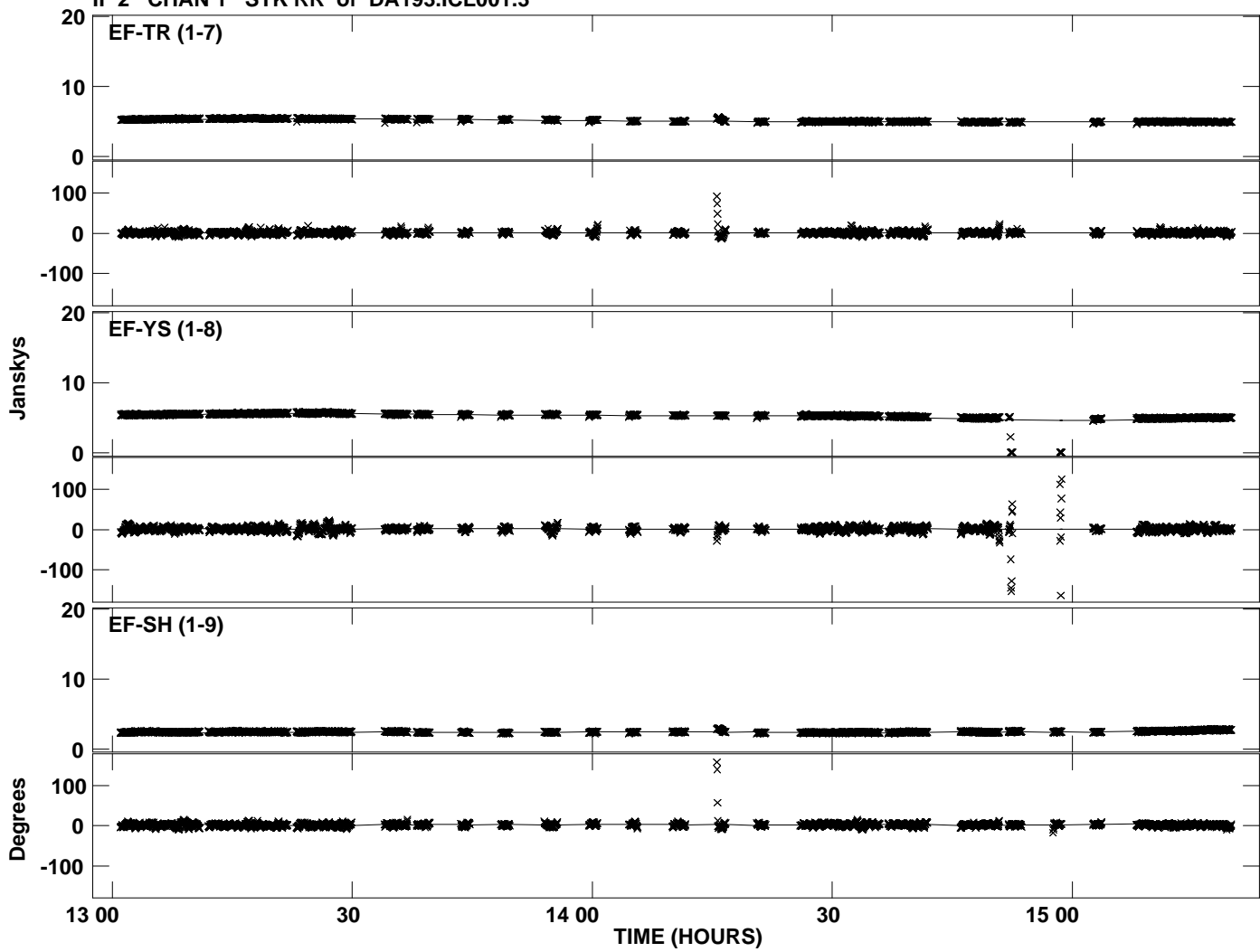
Plot file version 18 created 03-JUN-2010 17:21:37
Amplitude and Phase vs Time for DA193.MULTI.1 CL # 3
IF 1 CHAN 1 STK RR of DA193.ICL001.3



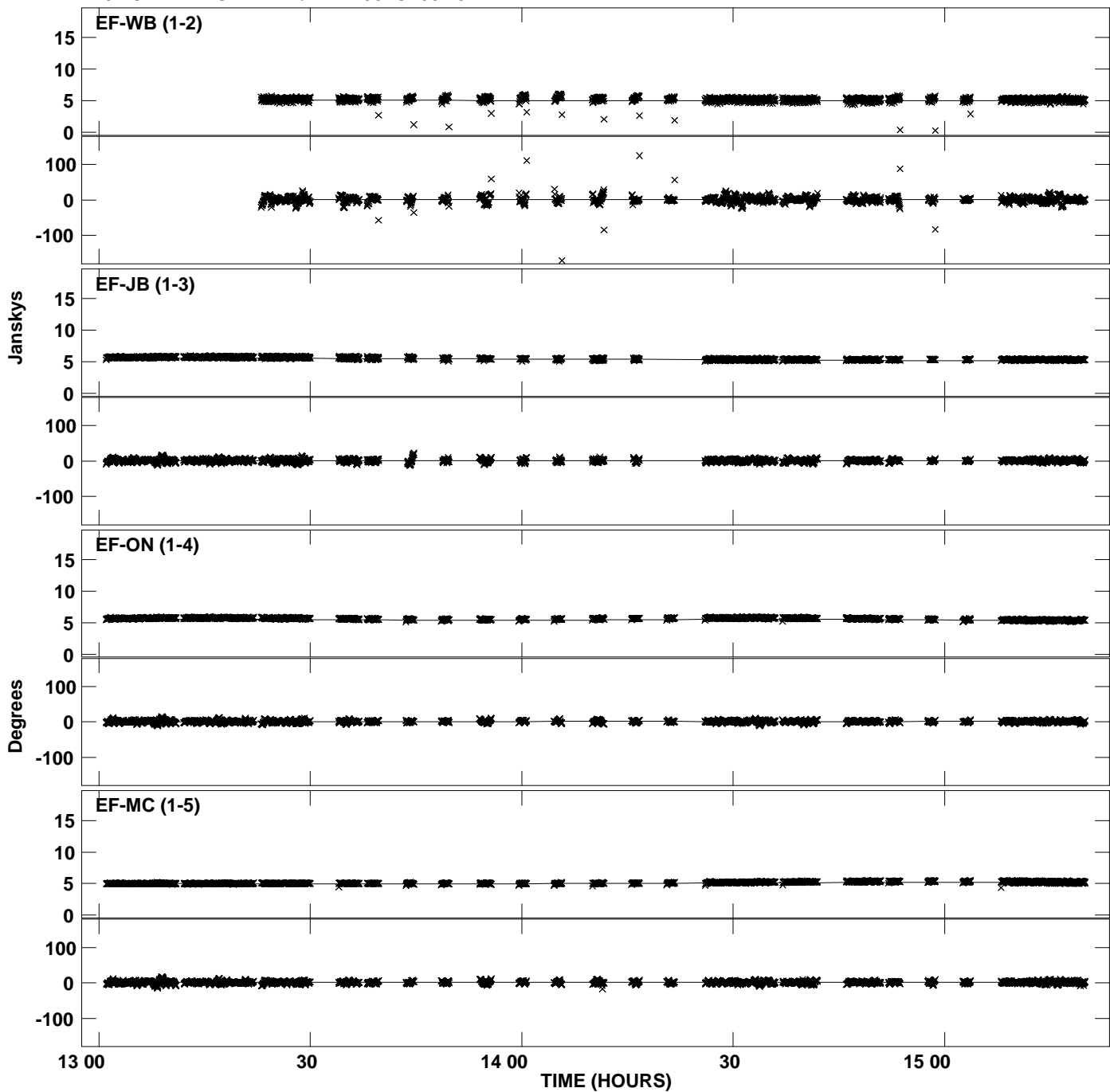
PLot file version 19 created 03-JUN-2010 17:21:38
Amplitude andPhase vs Time for DA193.MULTI.1 CL # 3
IF 2 CHAN 1 STK RR of DA193.ICL001.3



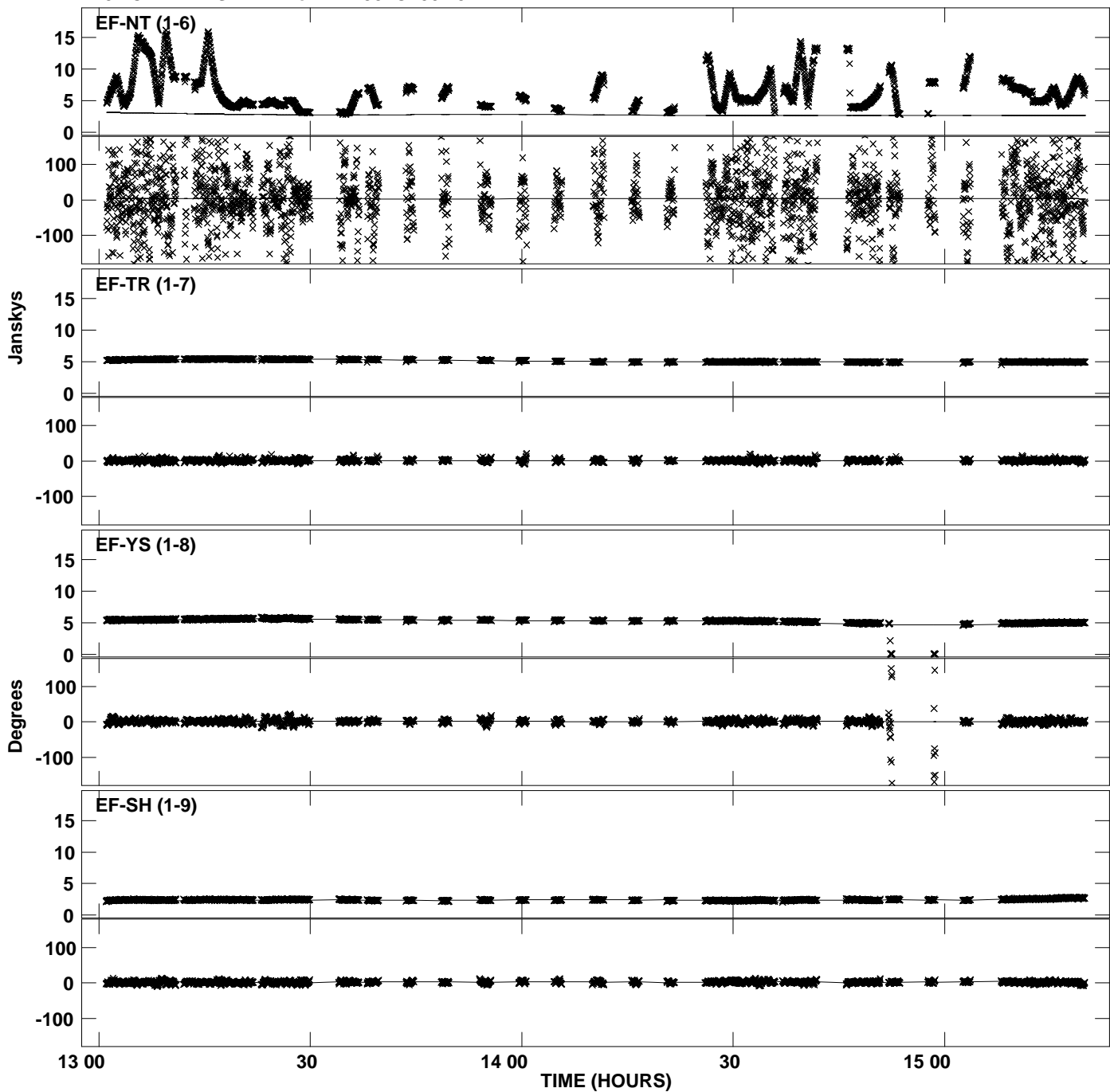
Plot file version 20 created 03-JUN-2010 17:21:38
Amplitude andPhase vs Time for DA193.MULTI.1 CL # 3
IF 2 CHAN 1 STK RR of DA193.ICL001.3



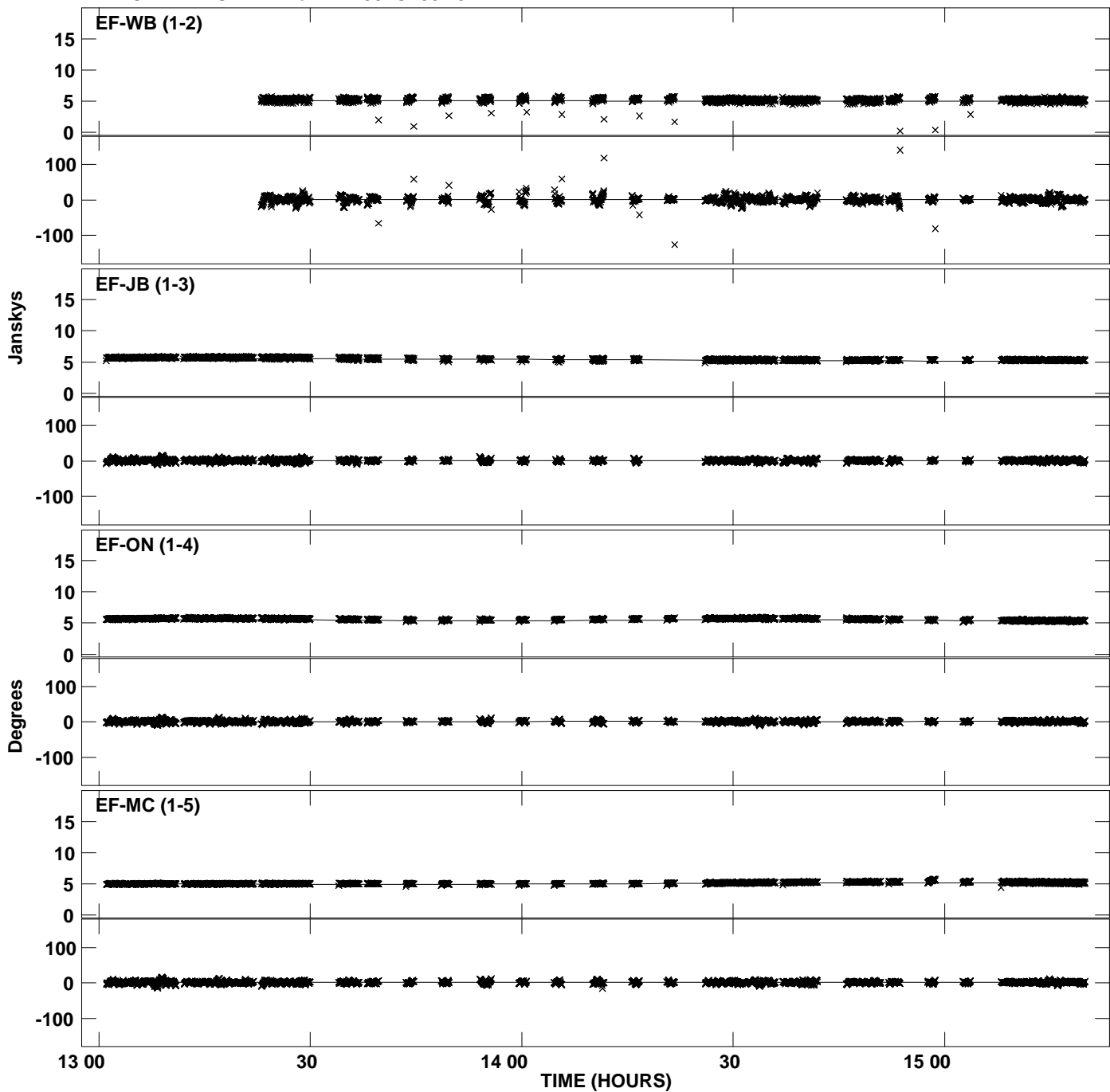
Plot file version 21 created 03-JUN-2010 17:21:39
Amplitude andPhase vs Time for DA193.MULTI.1 CL # 3
IF 3 CHAN 1 STK RR of DA193.ICL001.3



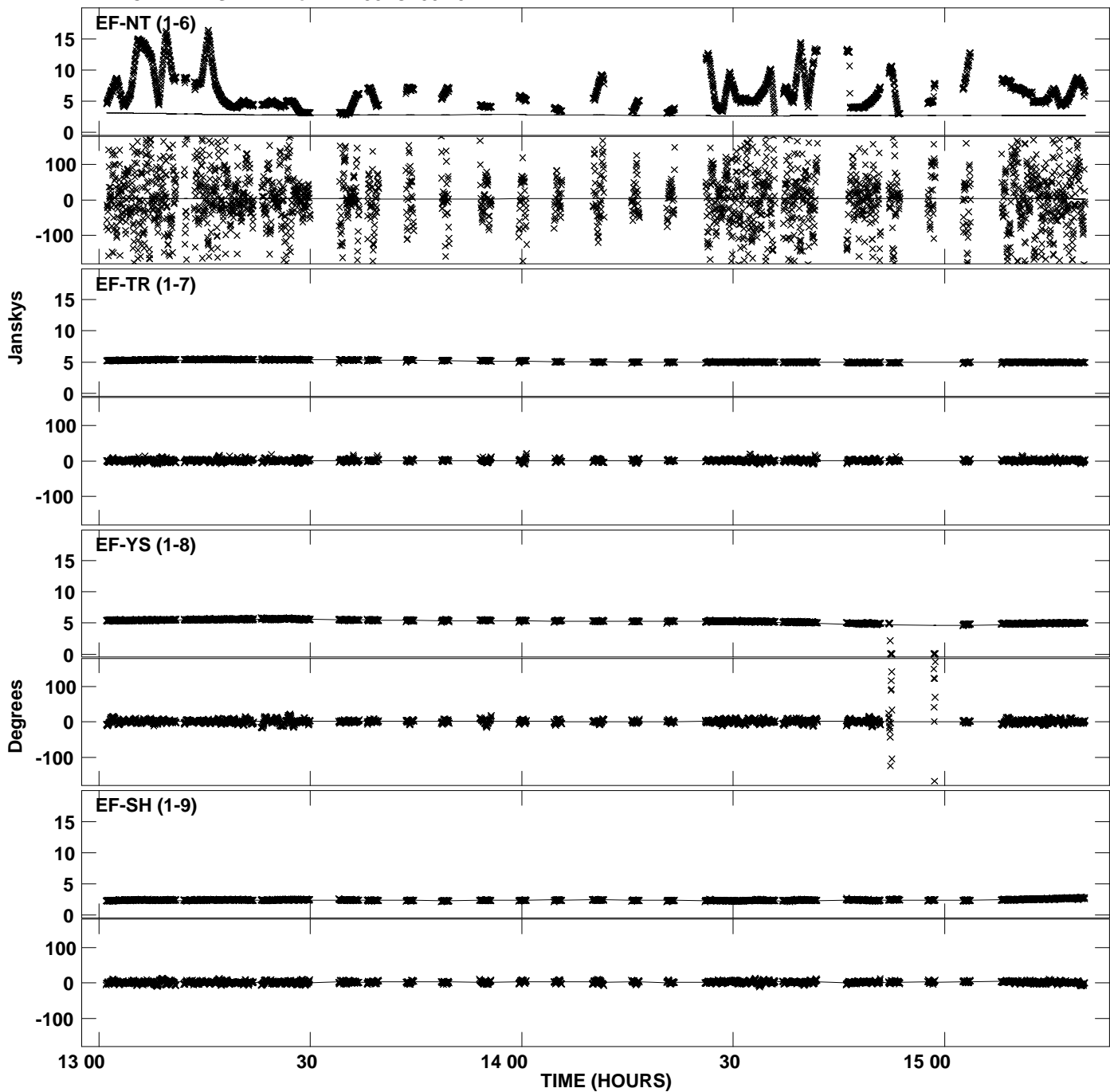
Plot file version 22 created 03-JUN-2010 17:21:39
Amplitude and Phase vs Time for DA193.MULTI.1 CL # 3
IF 3 CHAN 1 STK RR of DA193.ICL001.3



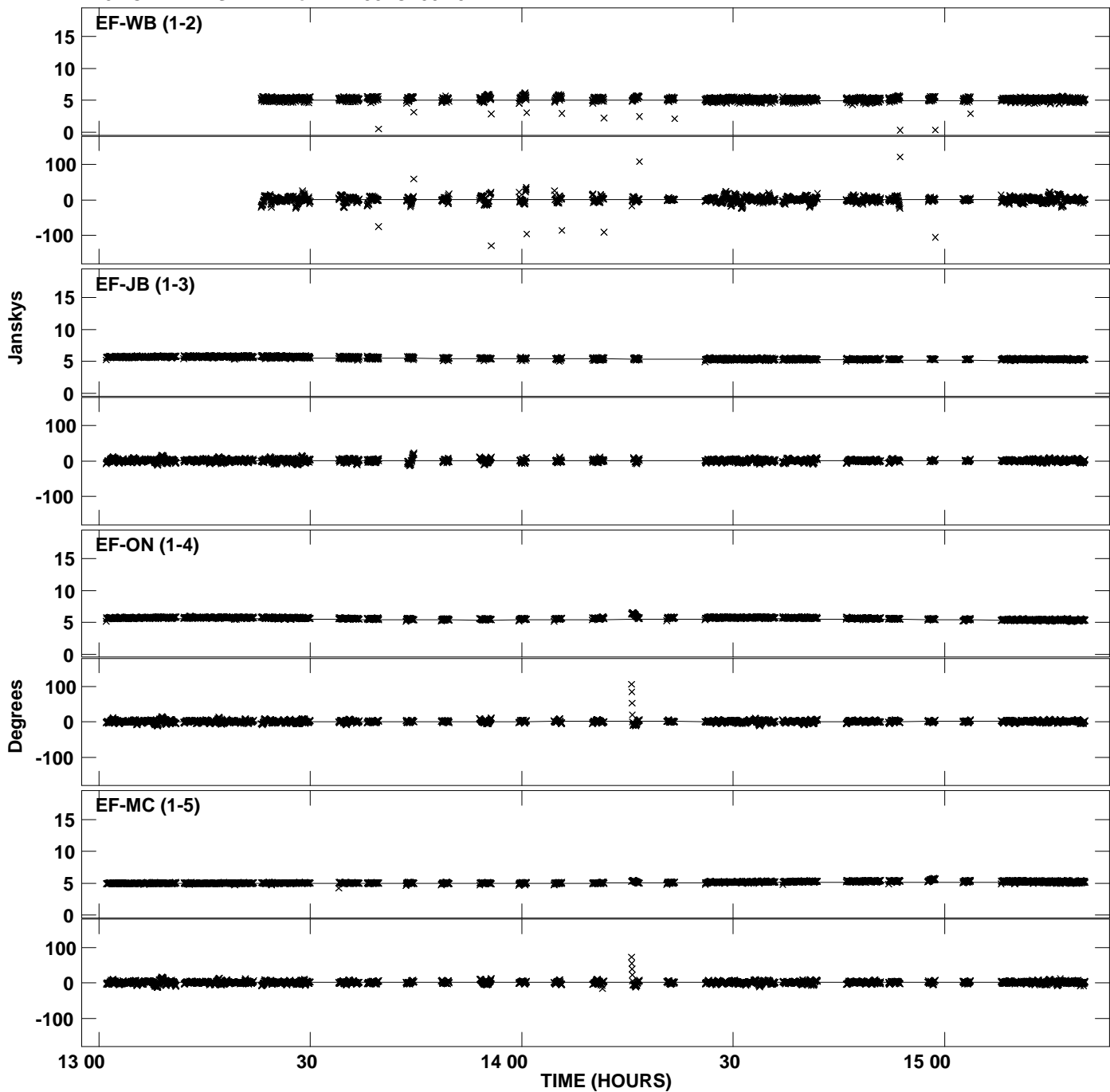
Plot file version 23 created 03-JUN-2010 17:21:39
Amplitude andPhase vs Time for DA193.MULTI.1 CL # 3
IF 4 CHAN 1 STK RR of DA193.ICL001.3



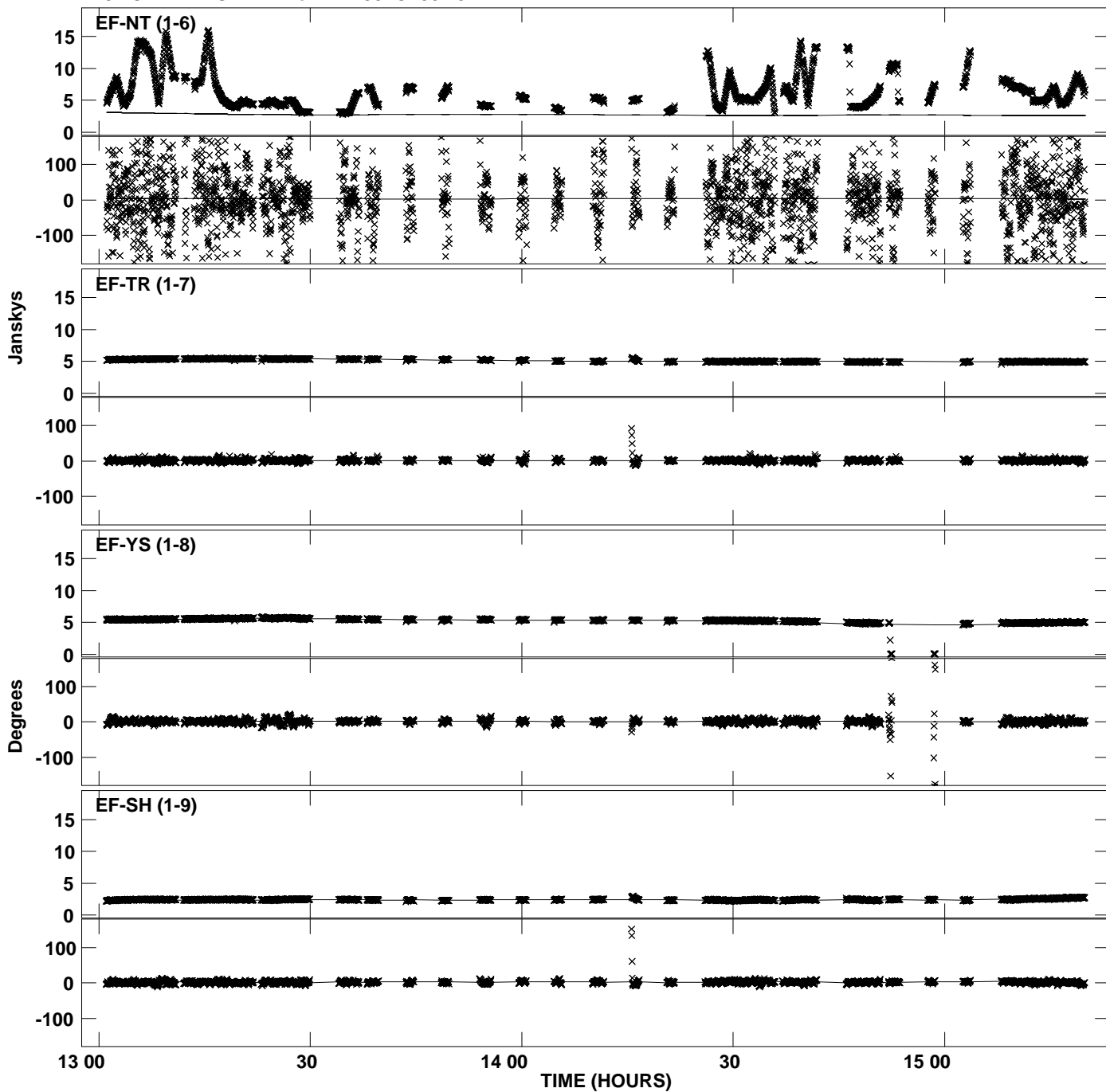
Plot file version 24 created 03-JUN-2010 17:21:40
Amplitude andPhase vs Time for DA193.MULTI.1 CL # 3
IF 4 CHAN 1 STK RR of DA193.ICL001.3



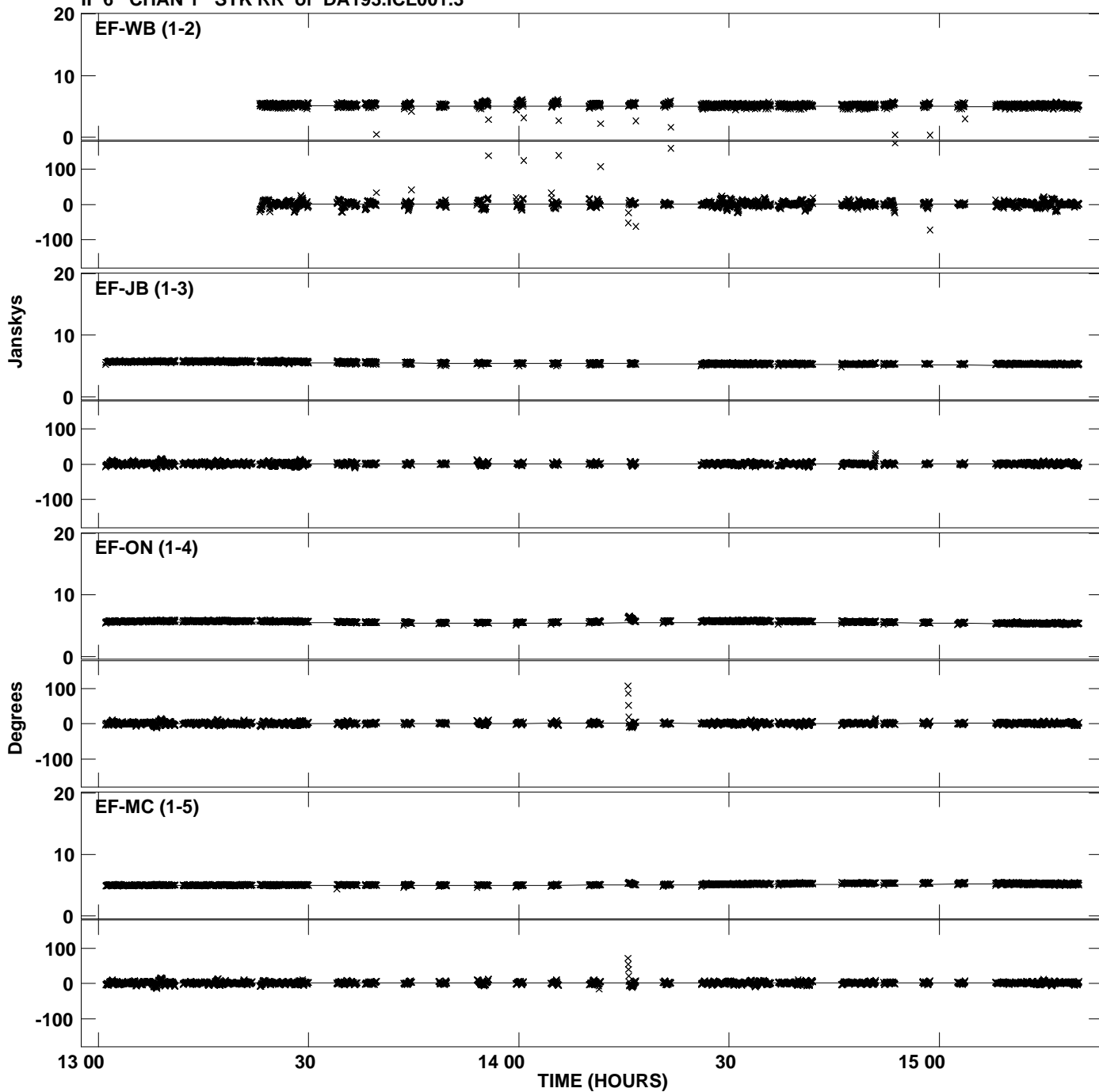
Plot file version 25 created 03-JUN-2010 17:21:40
Amplitude andPhase vs Time for DA193.MULTI.1 CL # 3
IF 5 CHAN 1 STK RR of DA193.ICL001.3



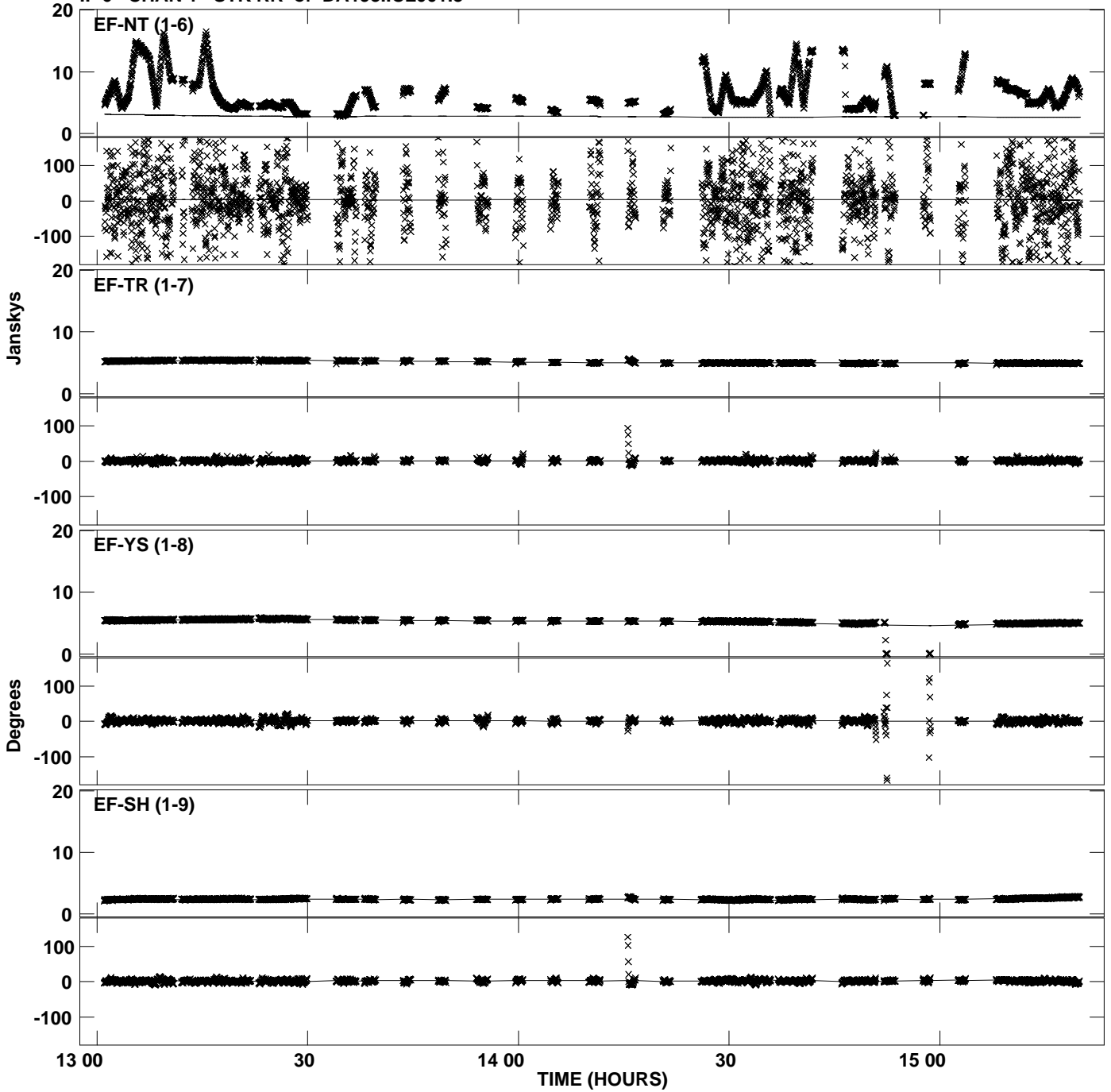
Plot file version 26 created 03-JUN-2010 17:21:40
Amplitude and Phase vs Time for DA193.MULTI.1 CL # 3
IF 5 CHAN 1 STK RR of DA193.ICL001.3



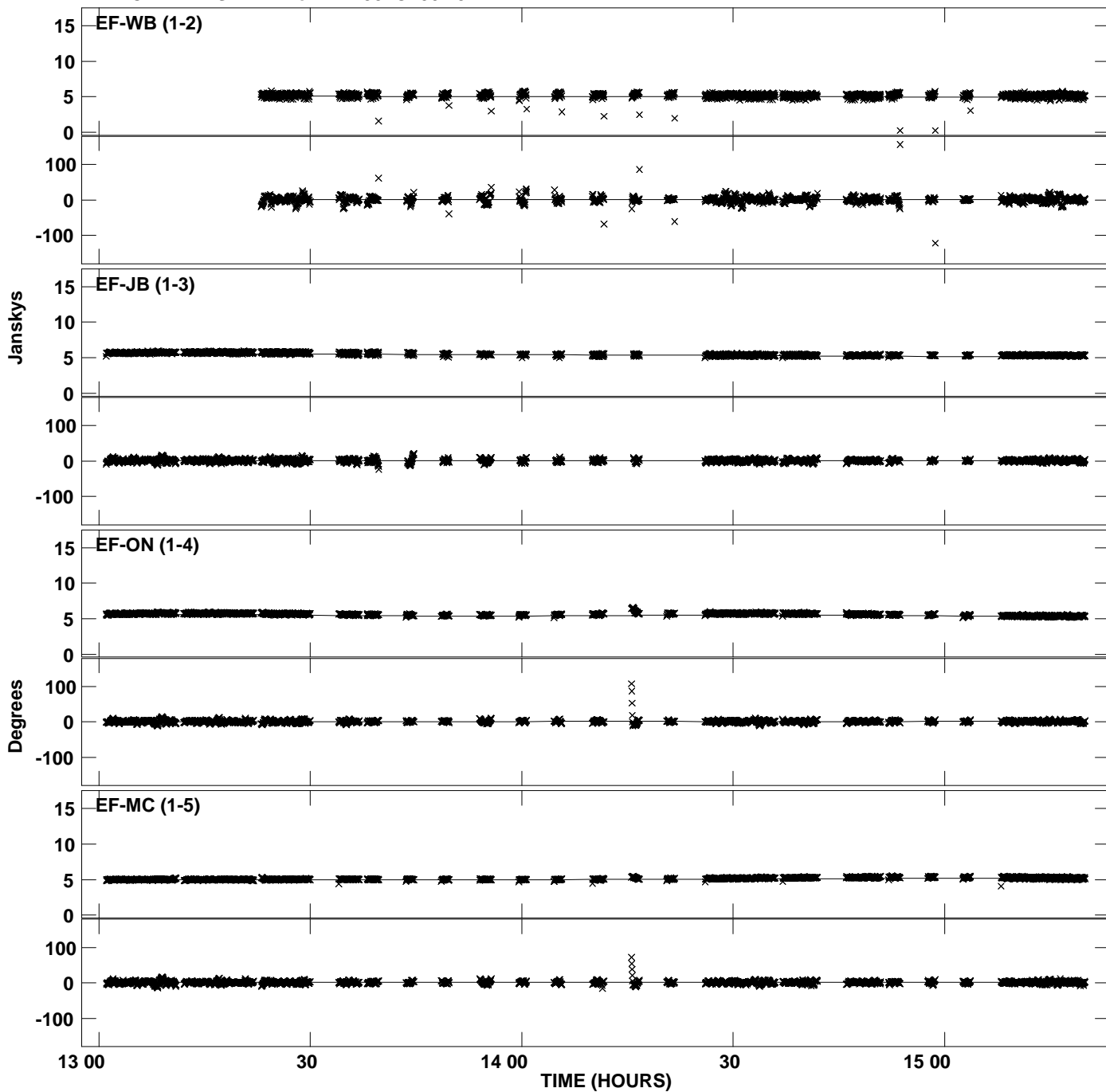
Plot file version 27 created 03-JUN-2010 17:21:41
Amplitude and Phase vs Time for DA193.MULTI.1 CL # 3
IF 6 CHAN 1 STK RR of DA193.ICL001.3



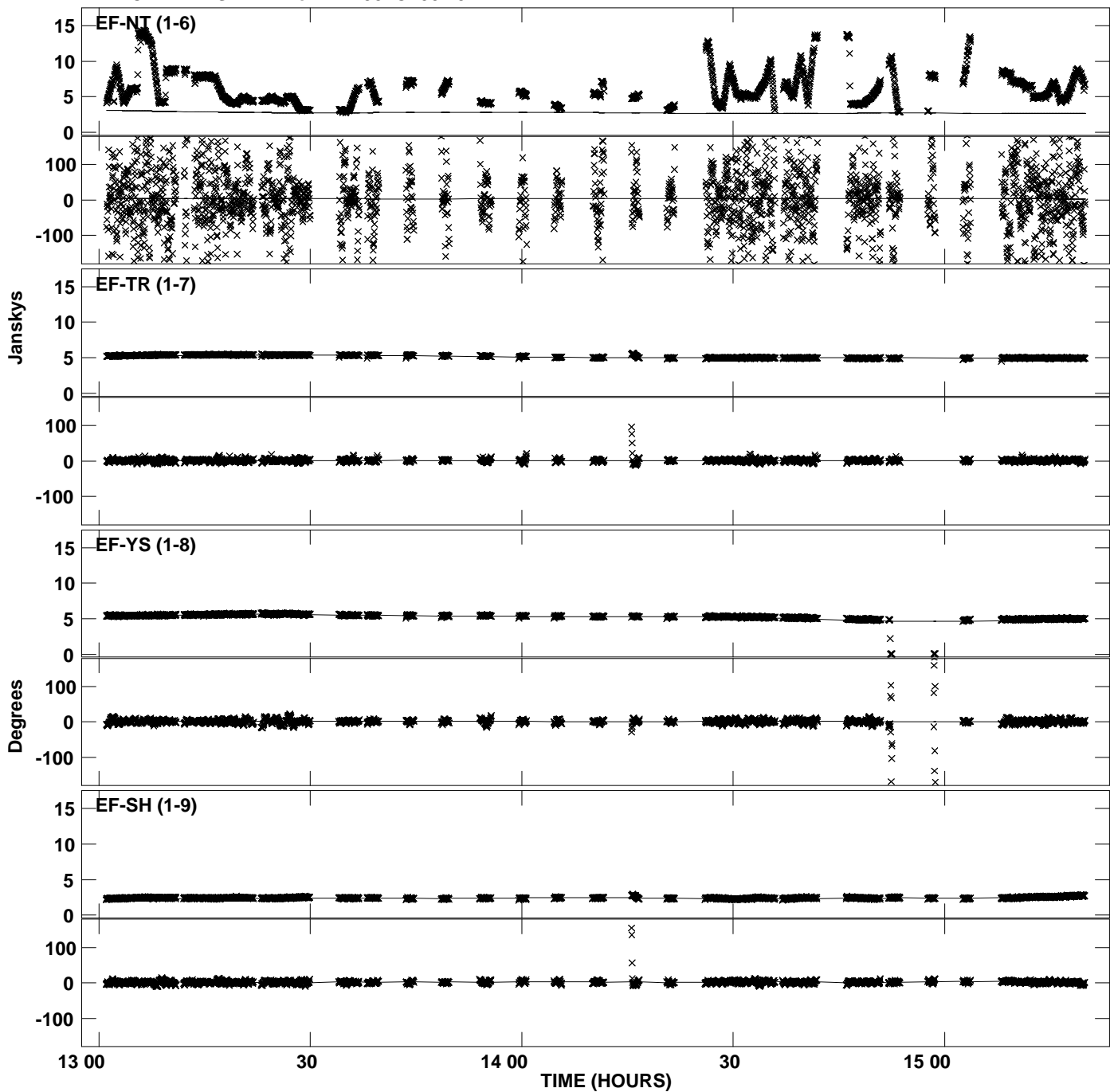
Plot file version 28 created 03-JUN-2010 17:21:41
Amplitude and Phase vs Time for DA193.MULTI.1 CL # 3
IF 6 CHAN 1 STK RR of DA193.ICL001.3



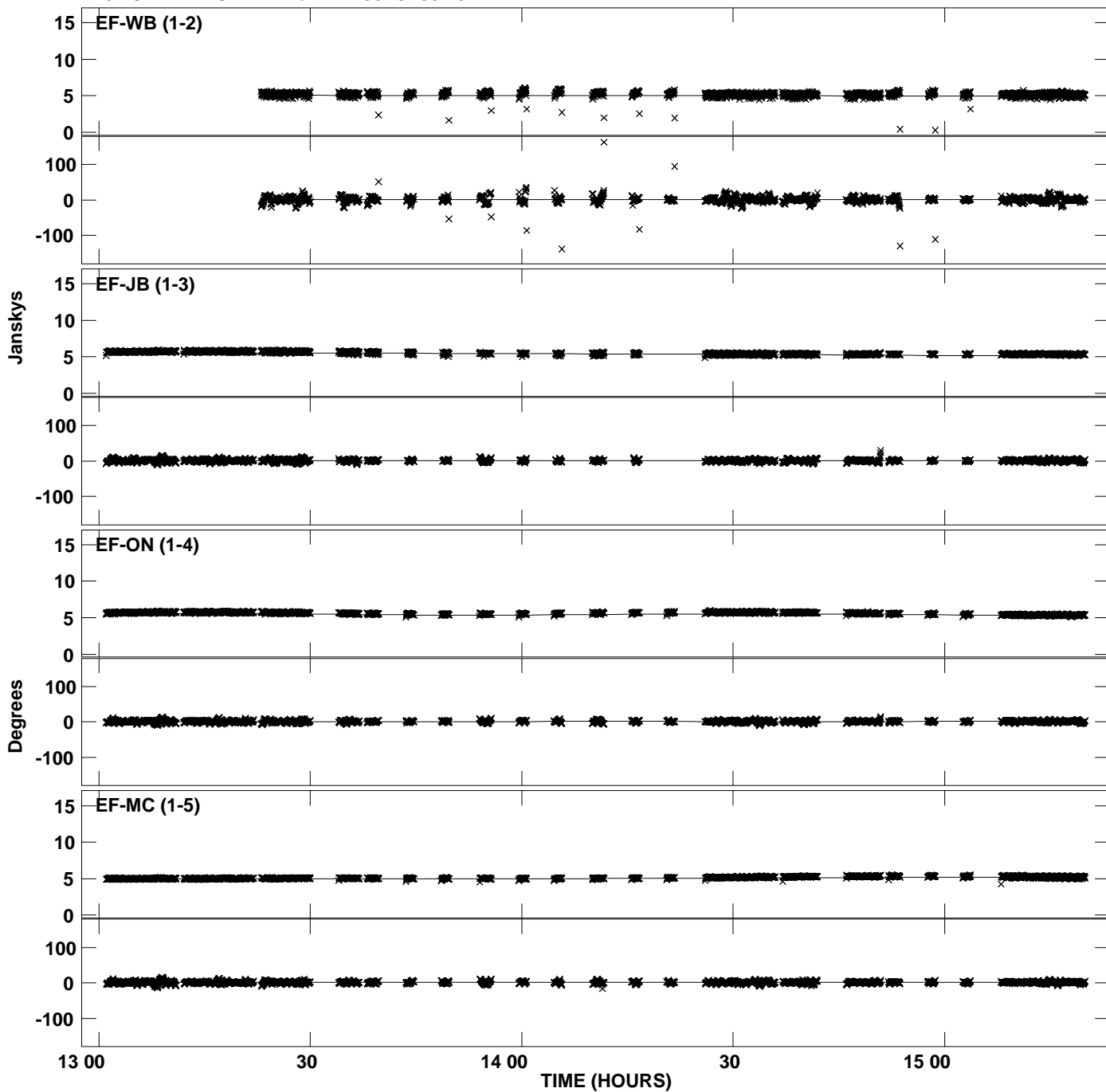
Plot file version 29 created 03-JUN-2010 17:21:41
Amplitude andPhase vs Time for DA193.MULTI.1 CL # 3
IF 7 CHAN 1 STK RR of DA193.ICL001.3



Plot file version 30 created 03-JUN-2010 17:21:41
Amplitude and Phase vs Time for DA193.MULTI.1 CL # 3
IF 7 CHAN 1 STK RR of DA193.ICL001.3



Plot file version 31 created 03-JUN-2010 17:21:42
Amplitude andPhase vs Time for DA193.MULTI.1 CL # 3
IF 8 CHAN 1 STK RR of DA193.ICL001.3



Plot file version 32 created 03-JUN-2010 17:21:42
Amplitude and Phase vs Time for DA193.MULTI.1 CL # 3
IF 8 CHAN 1 STK RR of DA193.ICL001.3

