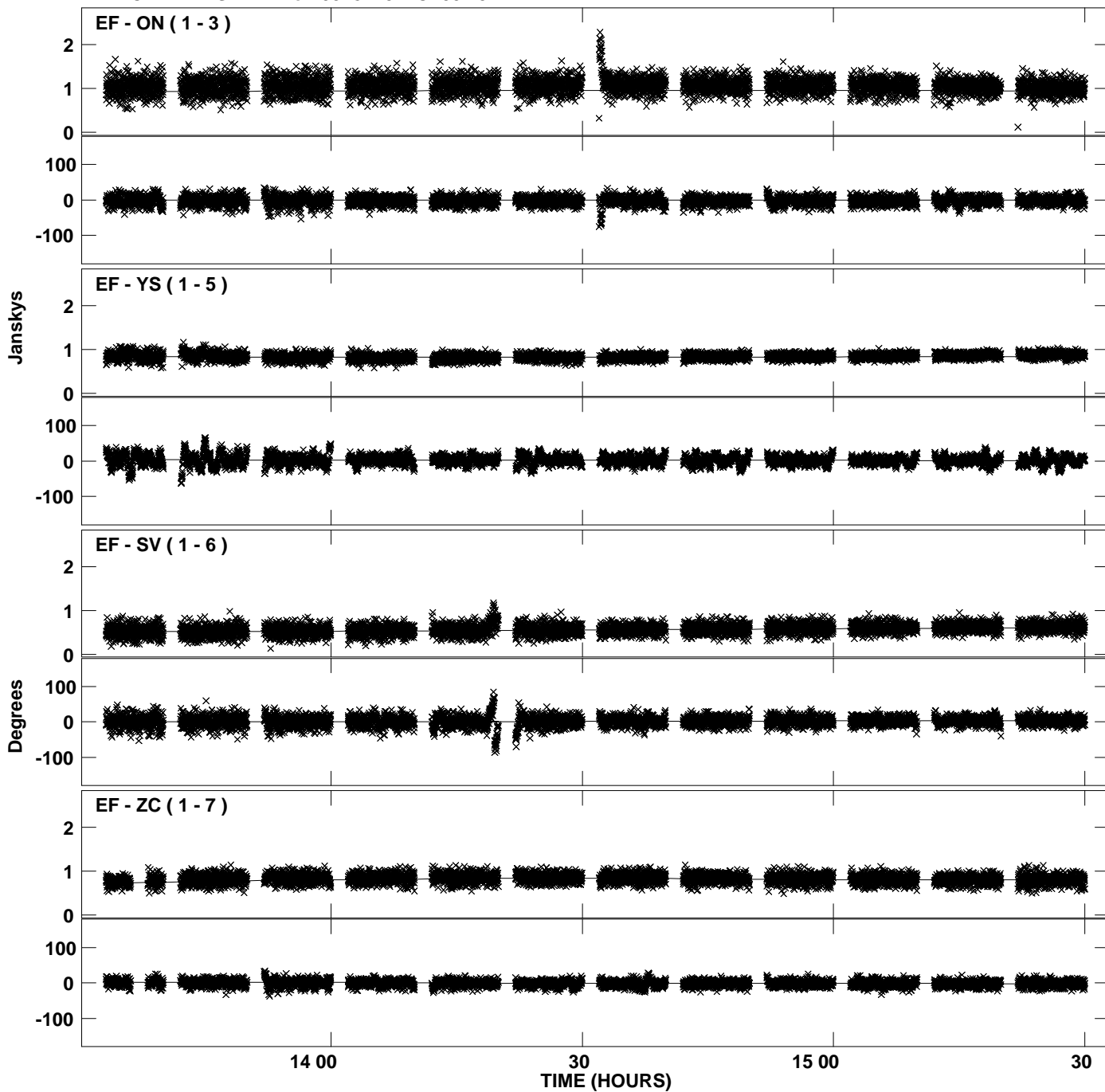
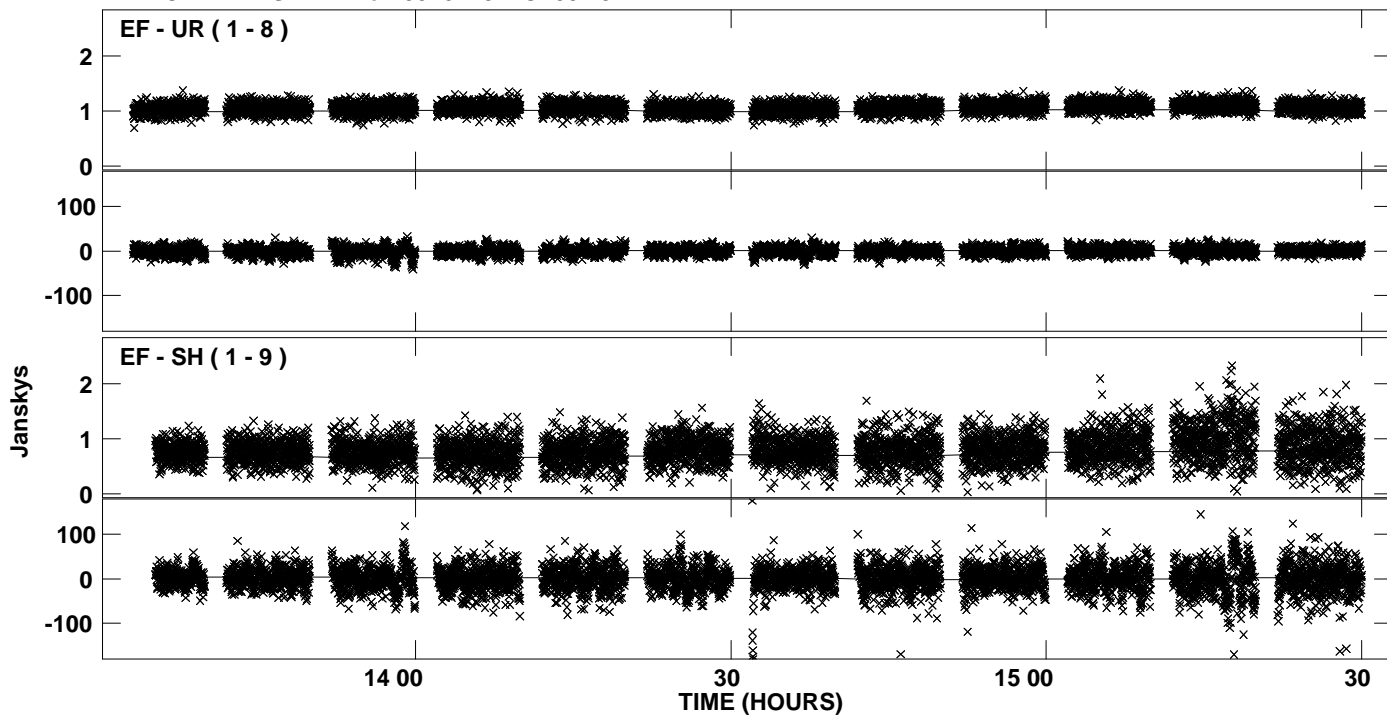


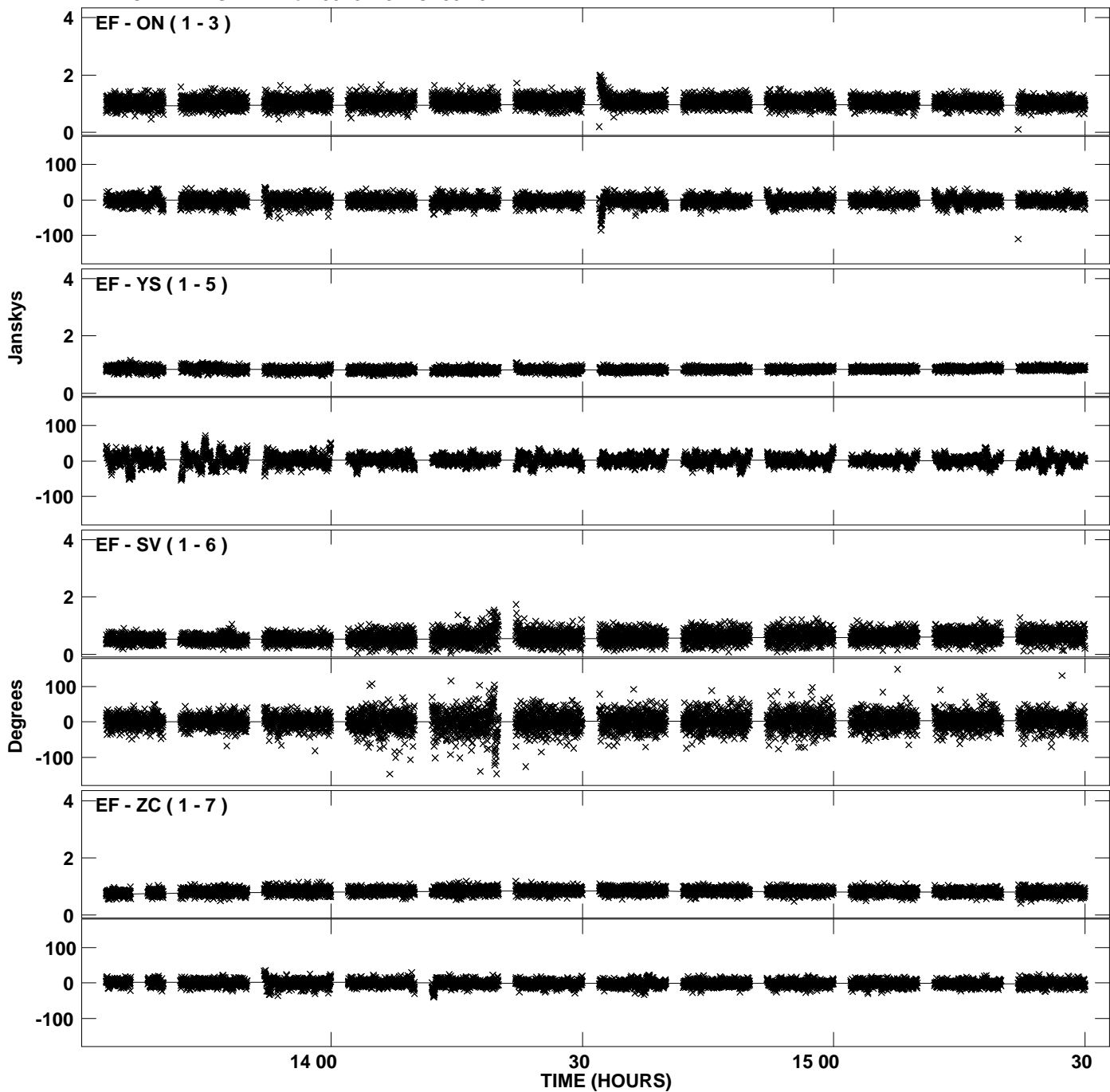
Plot file version 1 created 21-MAY-2012 22:38:54  
Amplitude and Phase vs Time for 0528+134.MULTI.1 CL # 3  
IF 1 CHAN 1 STK LL of 0528+134.ICL001.3



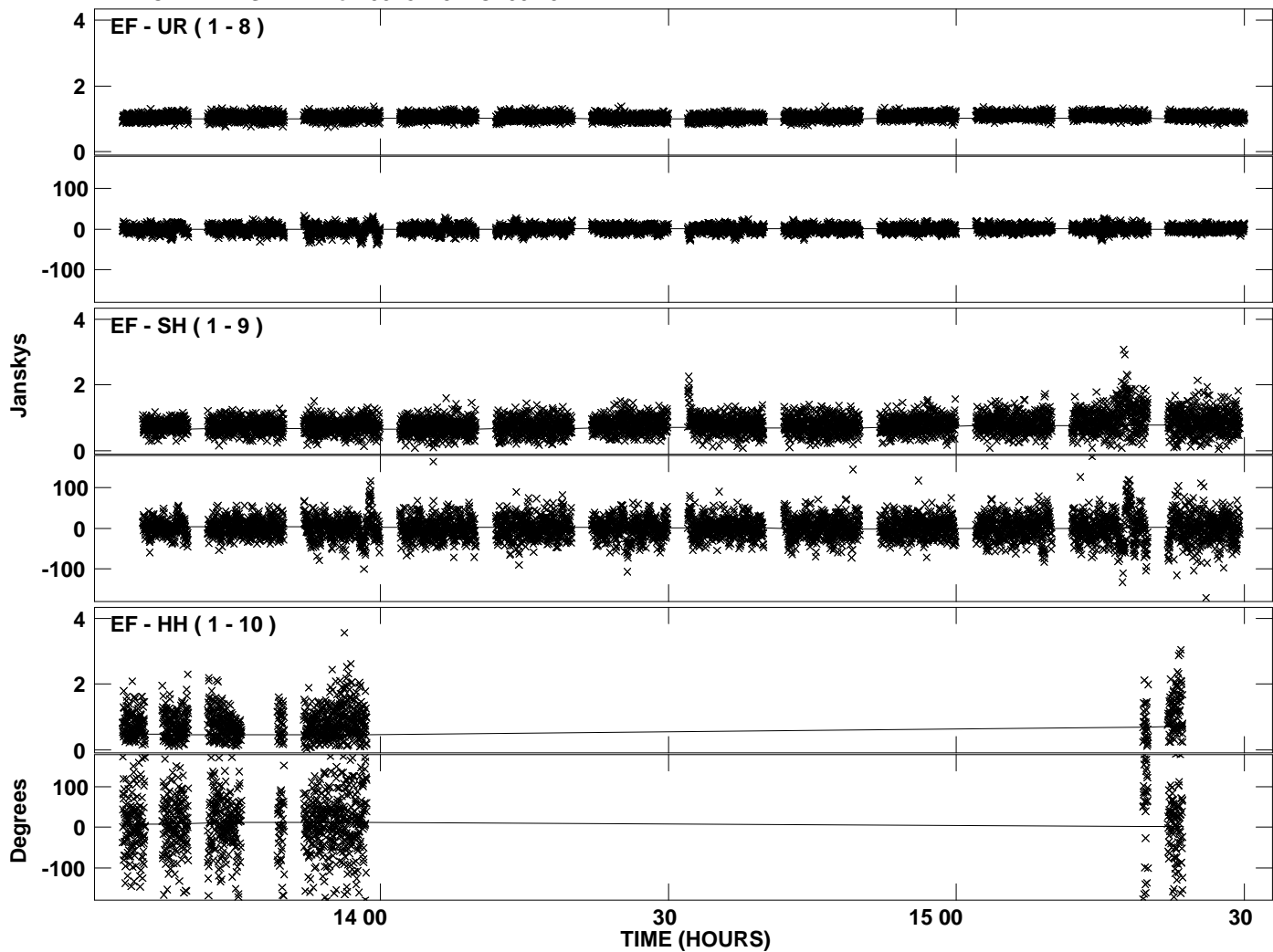
PLot file version 2 created 21-MAY-2012 22:38:54  
Amplitude andPhase vs Time for 0528+134.MULTI.1 CL # 3  
IF 1 CHAN 1 STK LL of 0528+134.ICL001.3



Plot file version 3 created 21-MAY-2012 22:38:56  
Amplitude and Phase vs Time for 0528+134.MULTI.1 CL # 3  
IF 2 CHAN 1 STK LL of 0528+134.ICL001.3

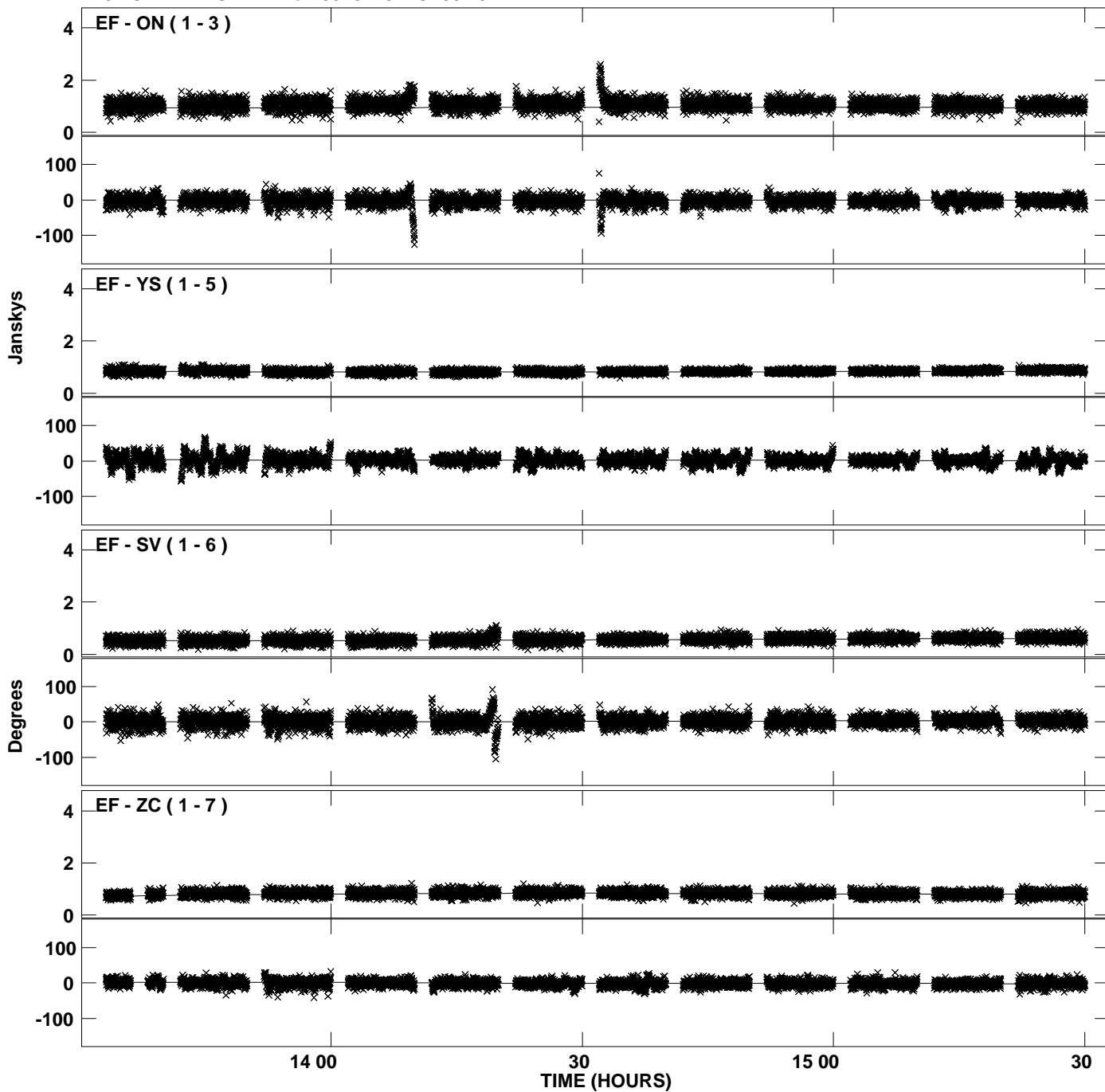


Plot file version 4 created 21-MAY-2012 22:38:56  
Amplitude and Phase vs Time for 0528+134.MULTI.1 CL # 3  
IF 2 CHAN 1 STK LL of 0528+134.ICL001.3

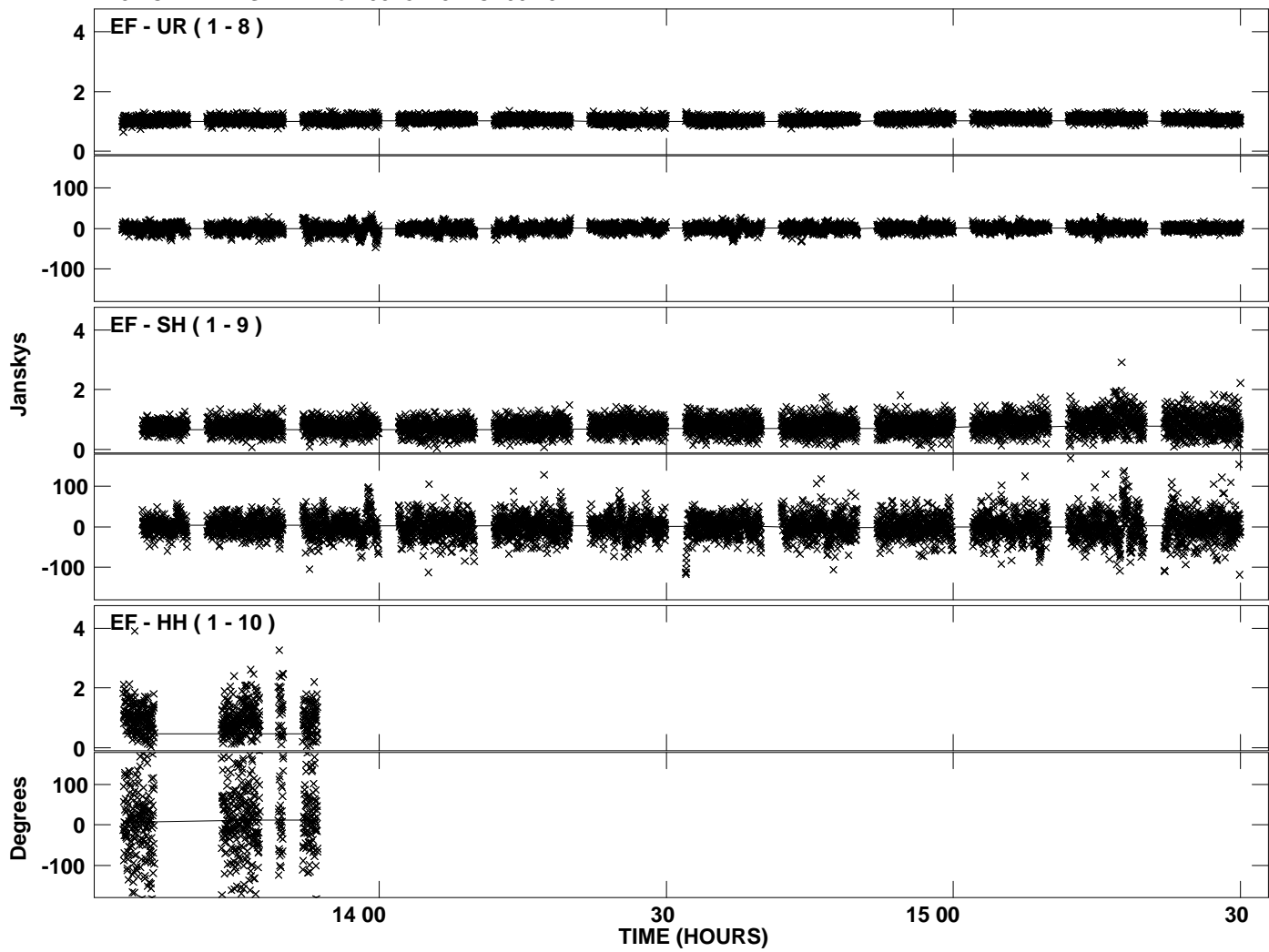




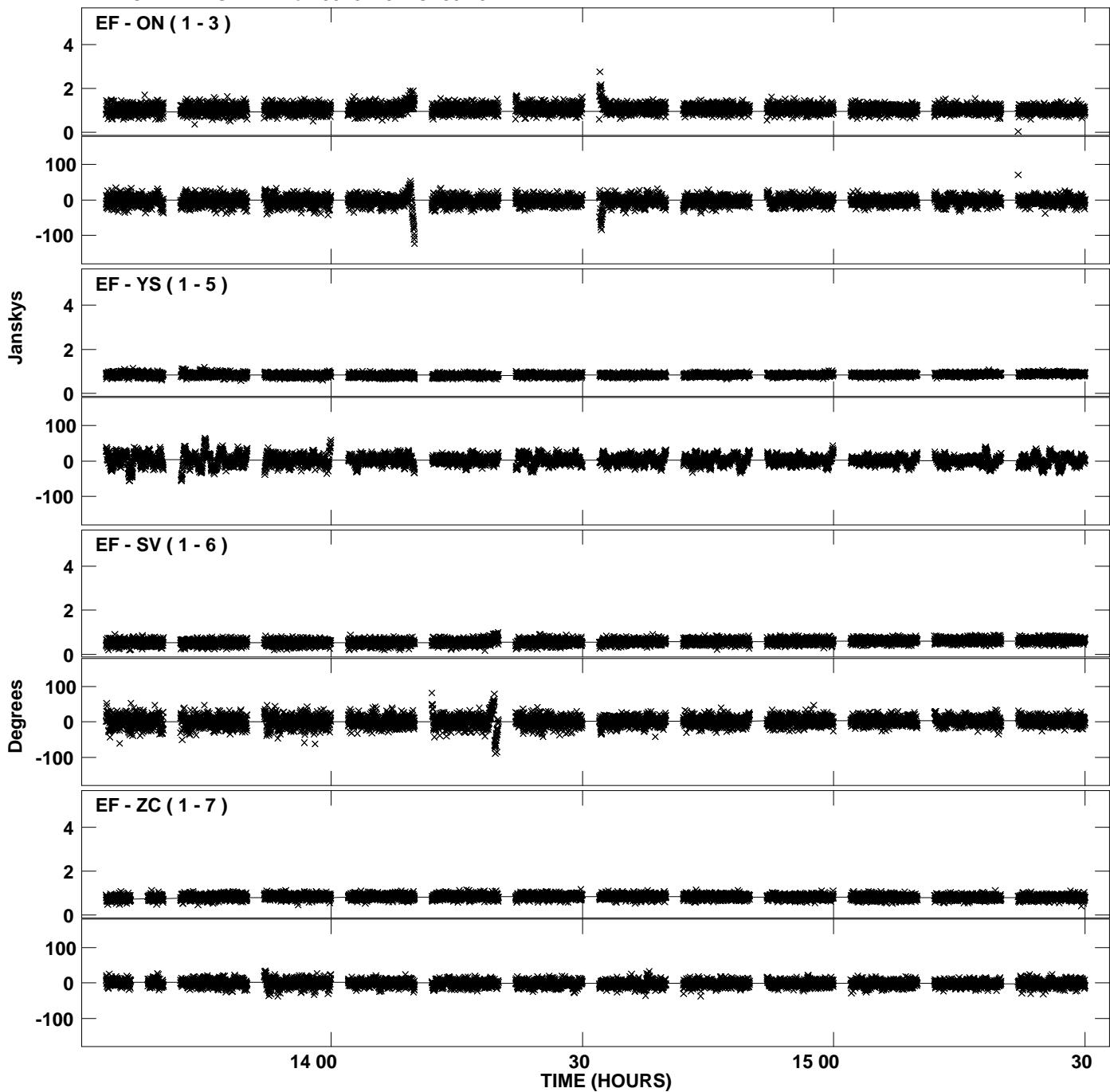
Plot file version 5 created 21-MAY-2012 22:38:58  
Amplitude and Phase vs Time for 0528+134.MULTI.1 CL # 3  
IF 3 CHAN 1 STK LL of 0528+134.ICL001.3



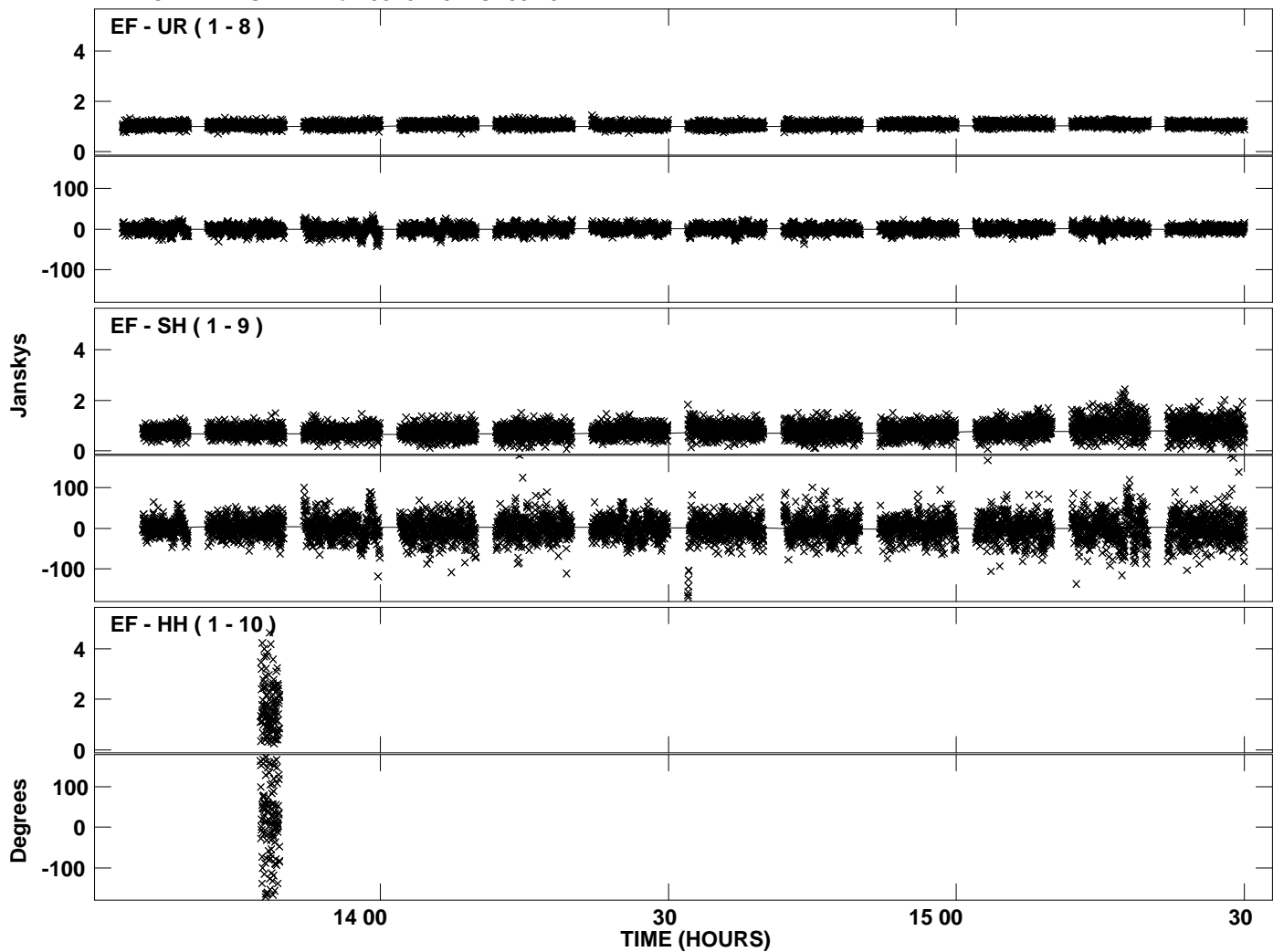
Plot file version 6 created 21-MAY-2012 22:38:58  
Amplitude and Phase vs Time for 0528+134.MULTI.1 CL # 3  
IF 3 CHAN 1 STK LL of 0528+134.ICL001.3



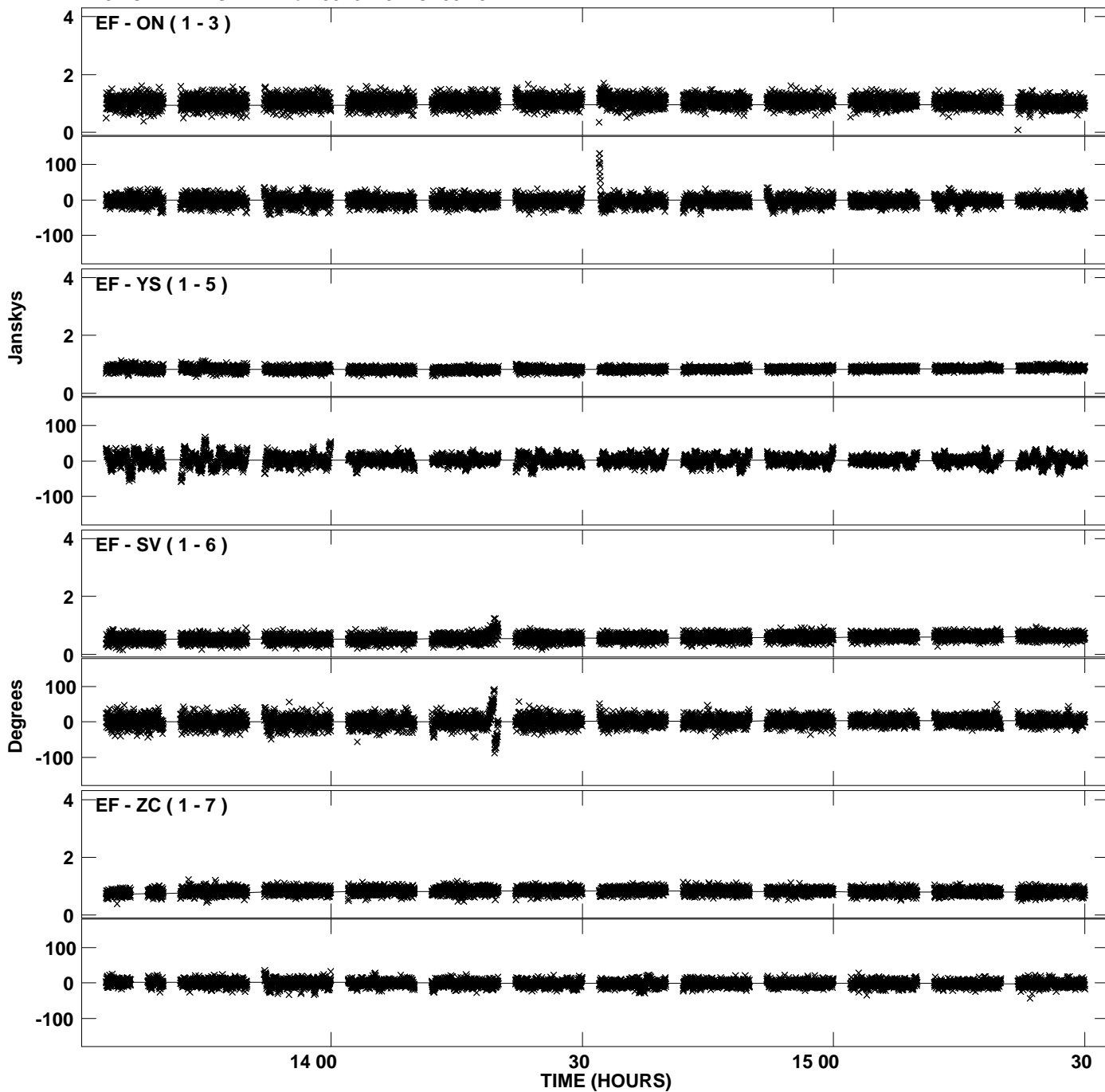
Plot file version 7 created 21-MAY-2012 22:38:59  
Amplitude and Phase vs Time for 0528+134.MULTI.1 CL # 3  
IF 4 CHAN 1 STK LL of 0528+134.ICL001.3



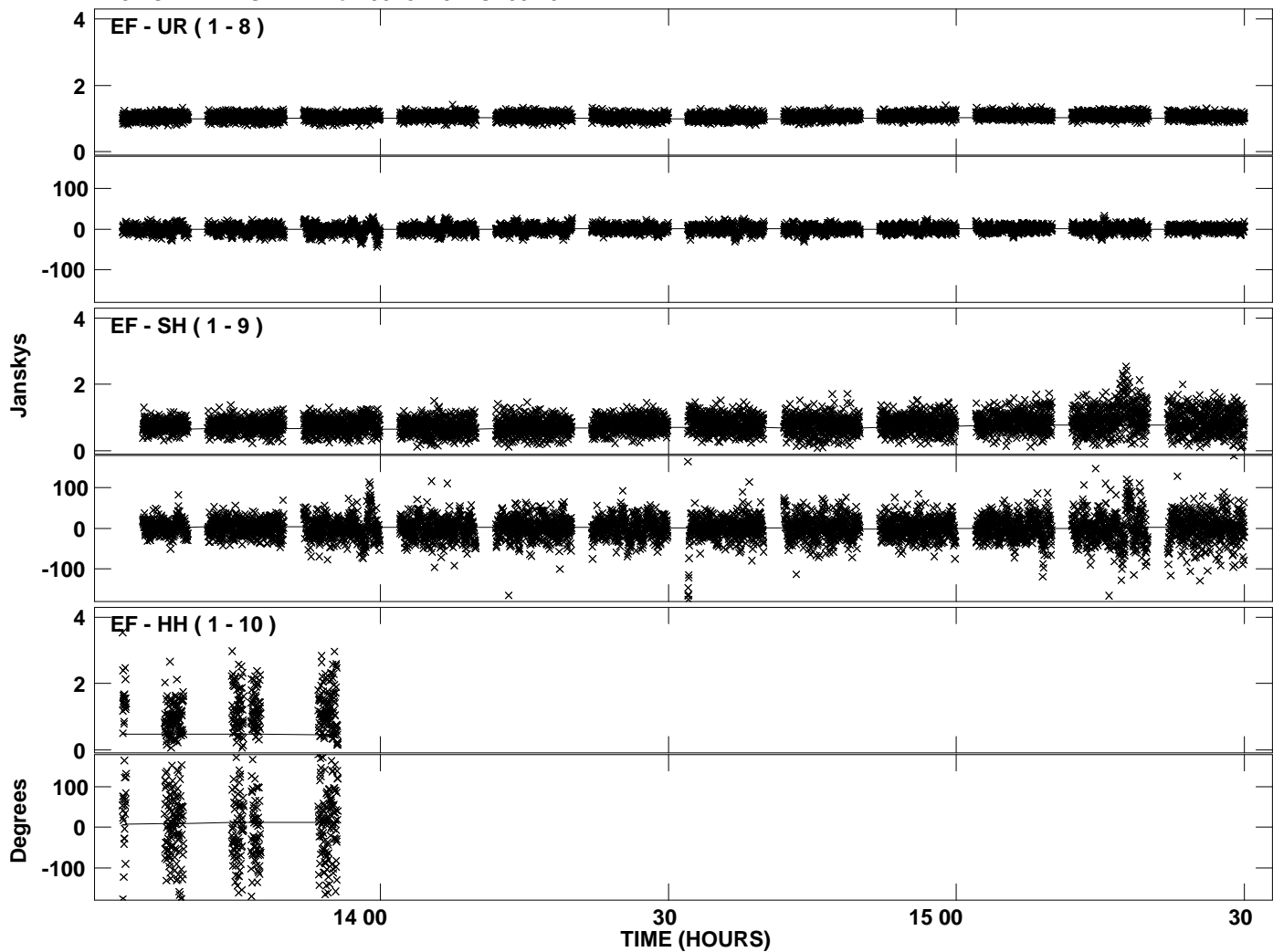
PLot file version 8 created 21-MAY-2012 22:39:00  
Amplitude andPhase vs Time for 0528+134.MULTI.1 CL # 3  
IF 4 CHAN 1 STK LL of 0528+134.ICL001.3



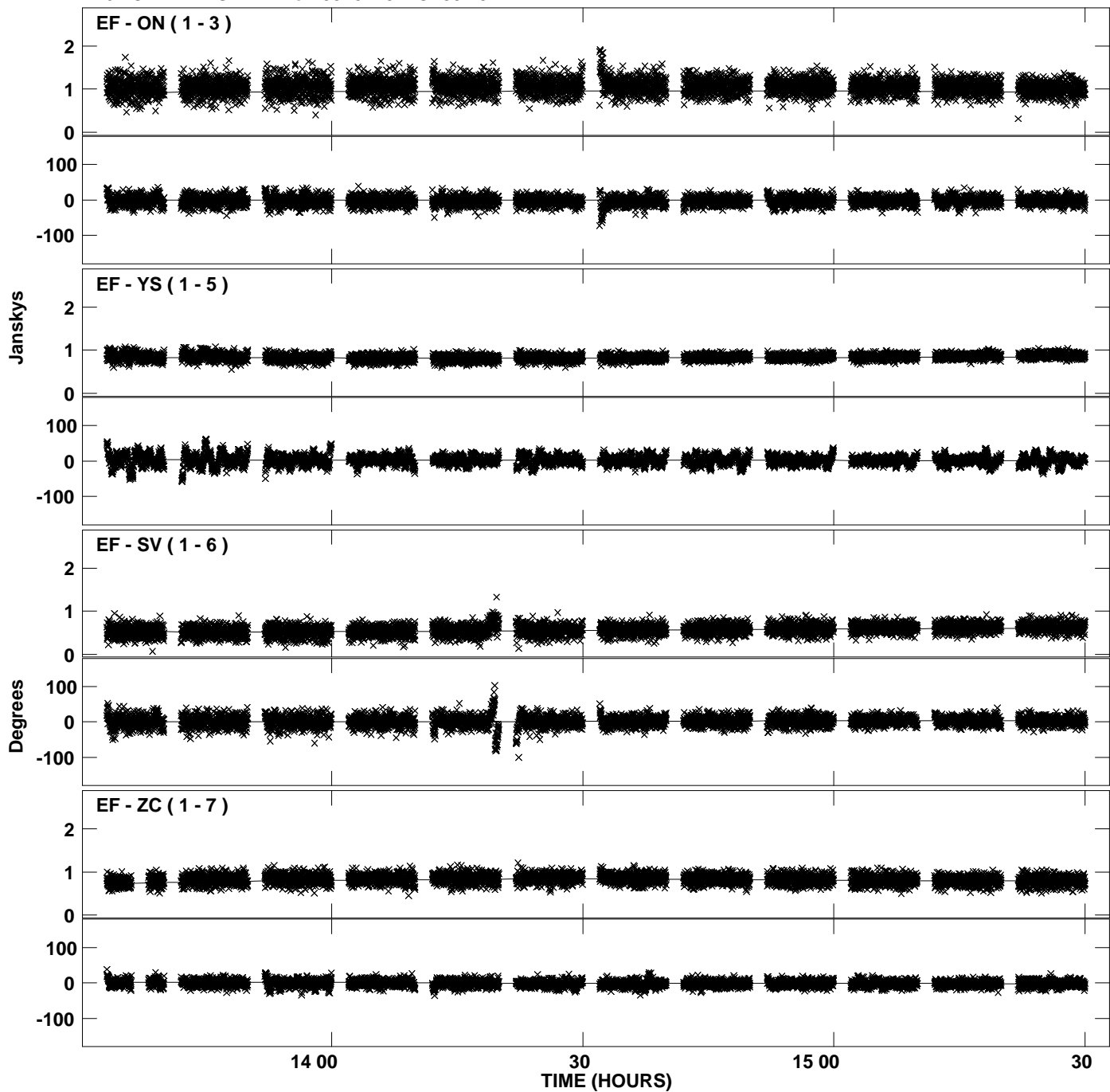
Plot file version 9 created 21-MAY-2012 22:39:01  
Amplitude and Phase vs Time for 0528+134.MULTI.1 CL # 3  
IF 5 CHAN 1 STK LL of 0528+134.ICL001.3



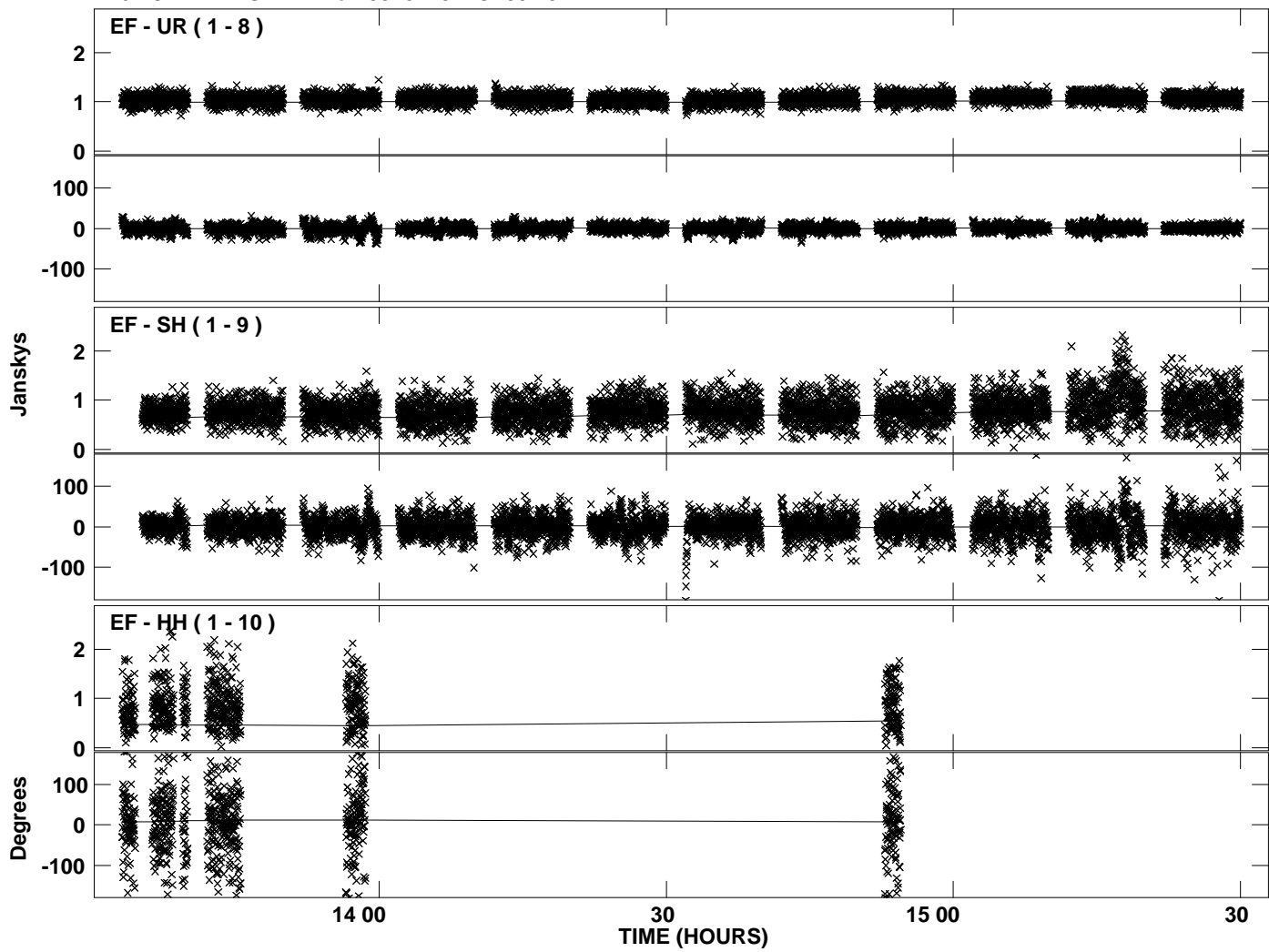
Plot file version 10 created 21-MAY-2012 22:39:01  
Amplitude and Phase vs Time for 0528+134.MULTI.1 CL # 3  
IF 5 CHAN 1 STK LL of 0528+134.ICL001.3



PLot file version 11 created 21-MAY-2012 22:39:03  
Amplitude and Phase vs Time for 0528+134.MULTI.1 CL # 3  
IF 6 CHAN 1 STK LL of 0528+134.ICL001.3

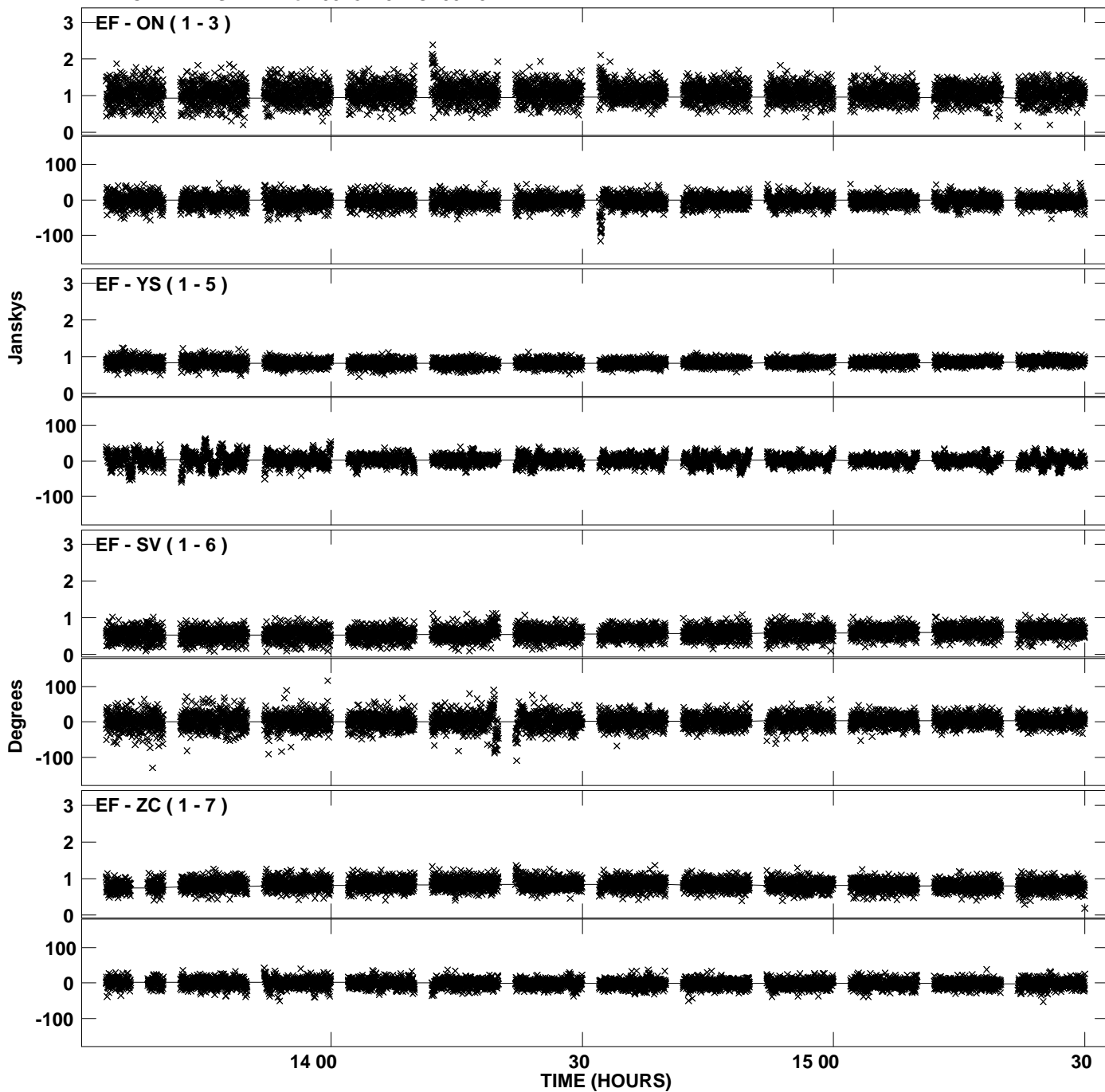


Plot file version 12 created 21-MAY-2012 22:39:03  
Amplitude and Phase vs Time for 0528+134.MULTI.1 CL # 3  
IF 6 CHAN 1 STK LL of 0528+134.ICL001.3

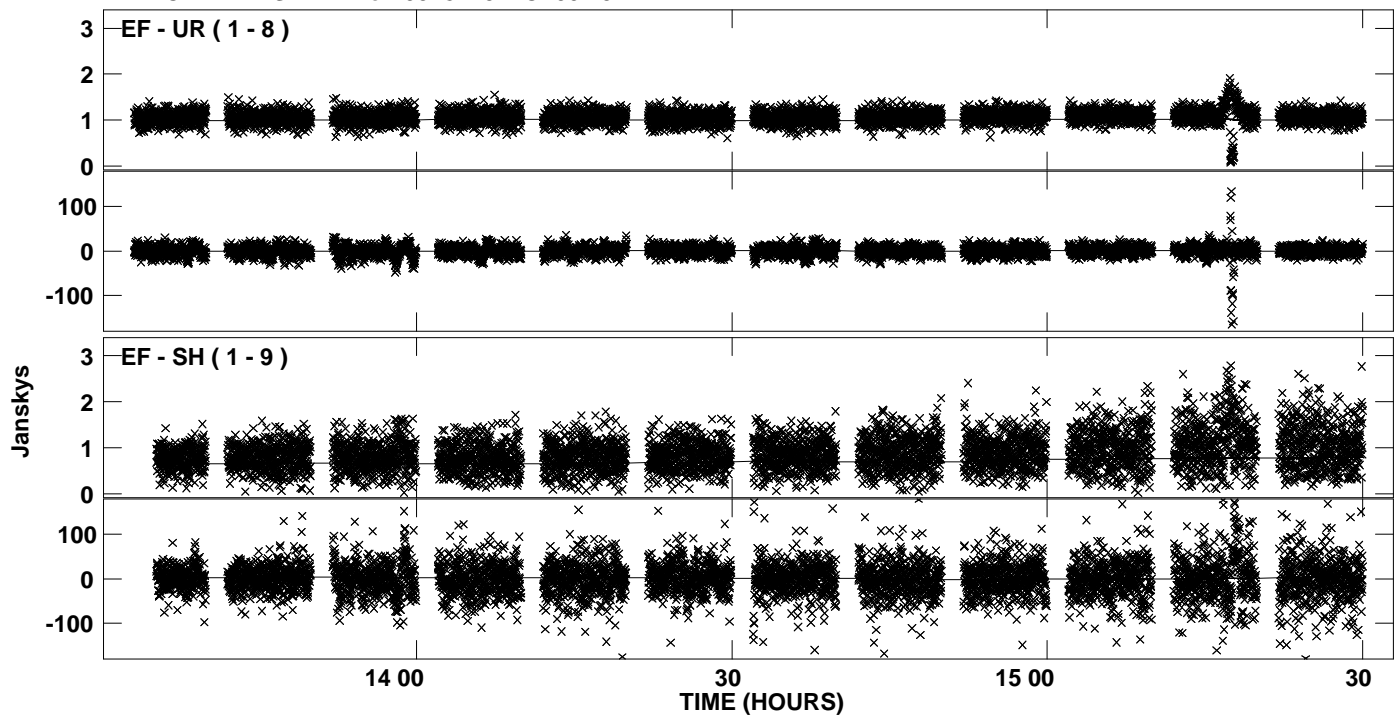




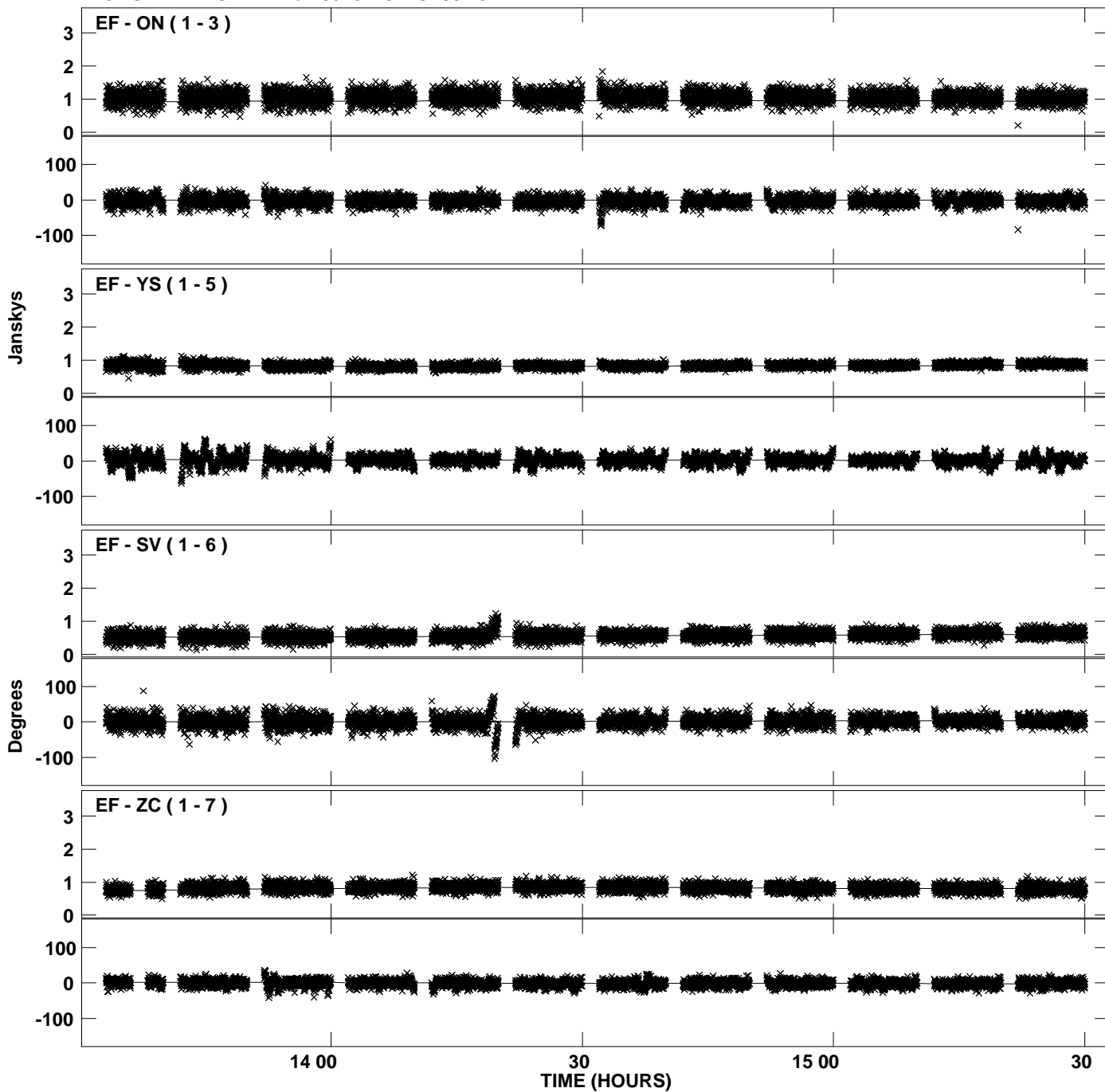
Plot file version 13 created 21-MAY-2012 22:39:05  
Amplitude and Phase vs Time for 0528+134.MULTI.1 CL # 3  
IF 7 CHAN 1 STK LL of 0528+134.ICL001.3



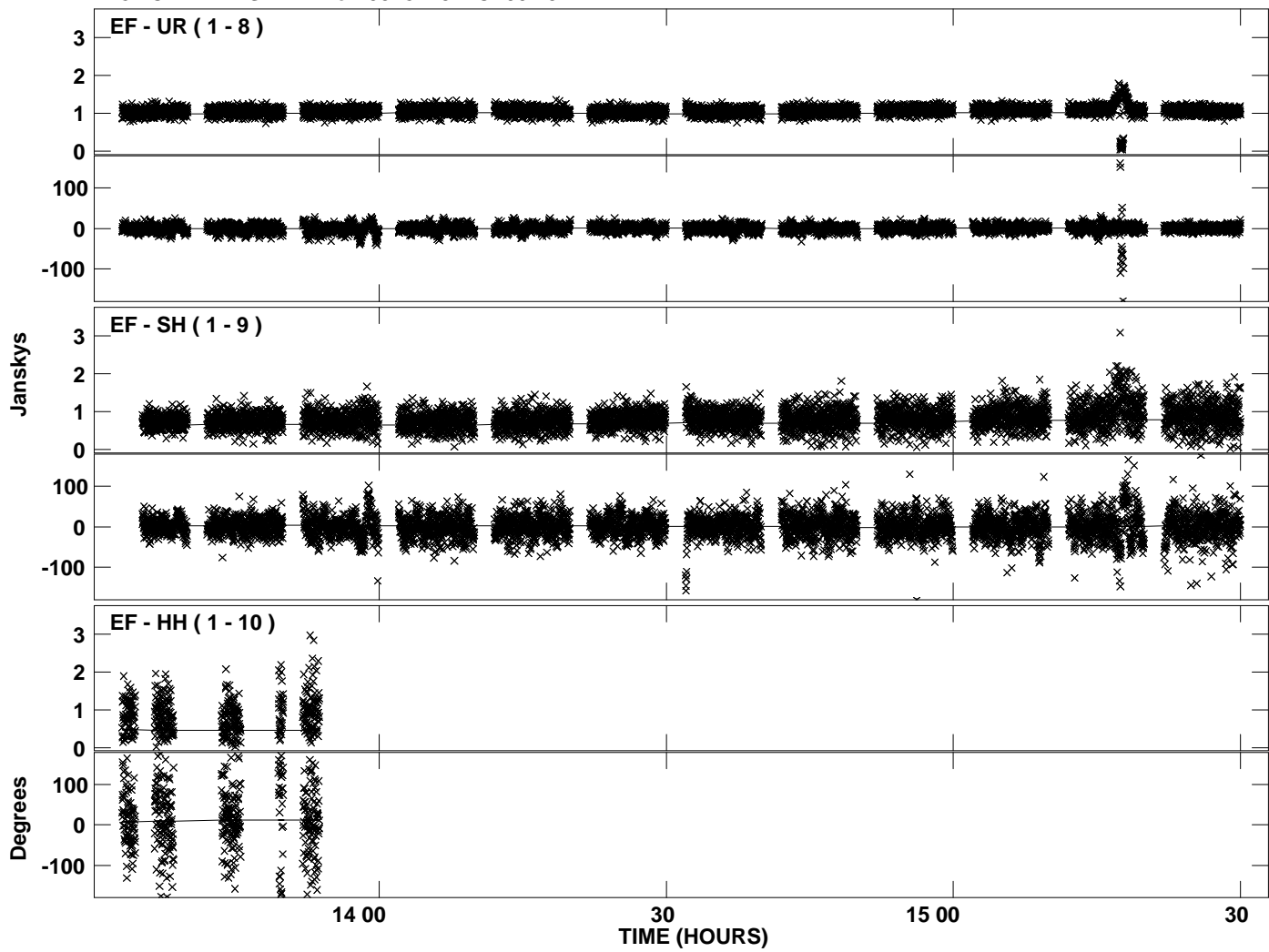
Plot file version 14 created 21-MAY-2012 22:39:05  
Amplitude and Phase vs Time for 0528+134.MULTI.1 CL # 3  
IF 7 CHAN 1 STK LL of 0528+134.ICL001.3



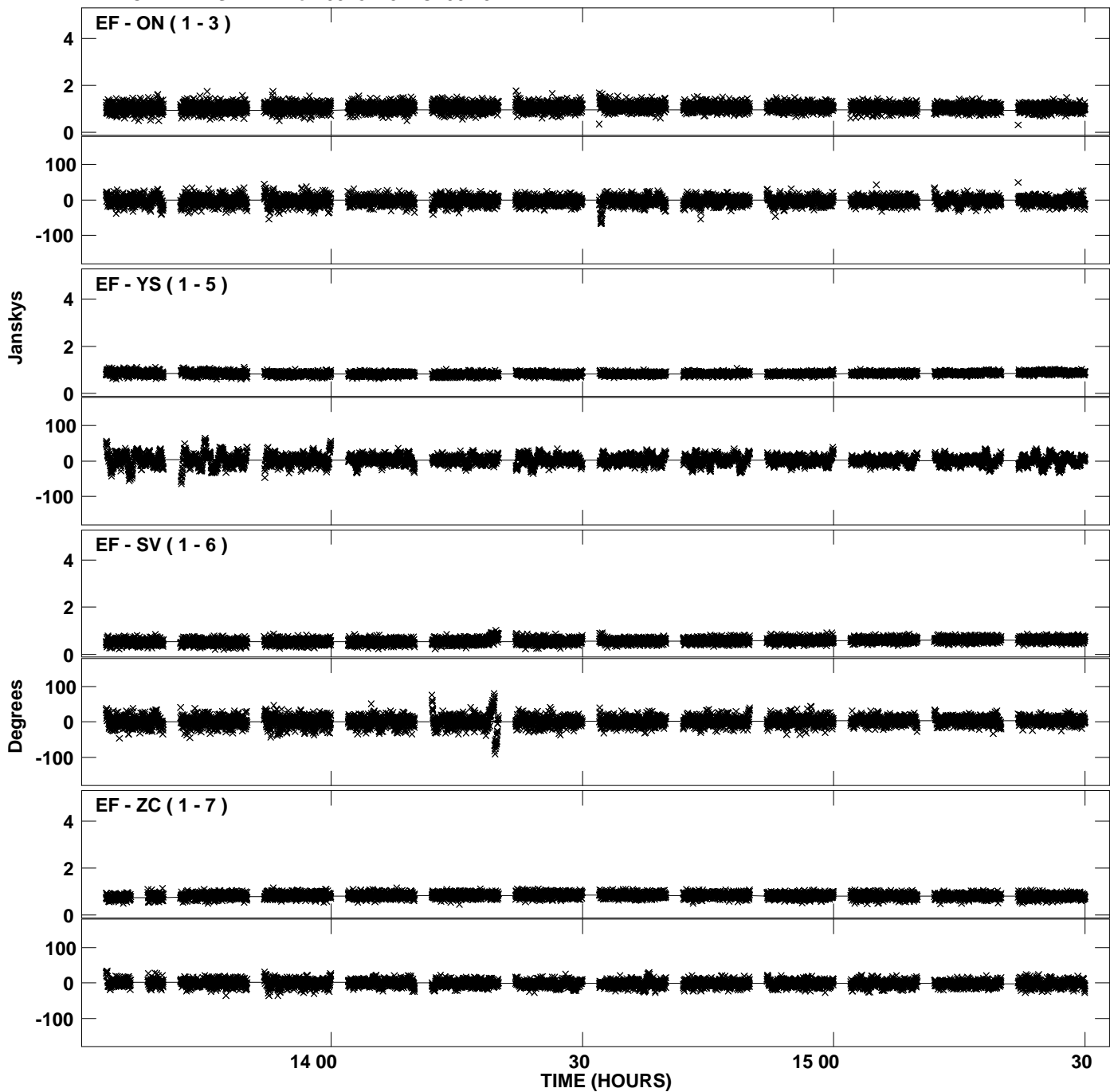
Plot file version 15 created 21-MAY-2012 22:39:06  
Amplitude and Phase vs Time for 0528+134.MULTI.1 CL # 3  
IF 8 CHAN 1 STK LL of 0528+134.ICL001.3



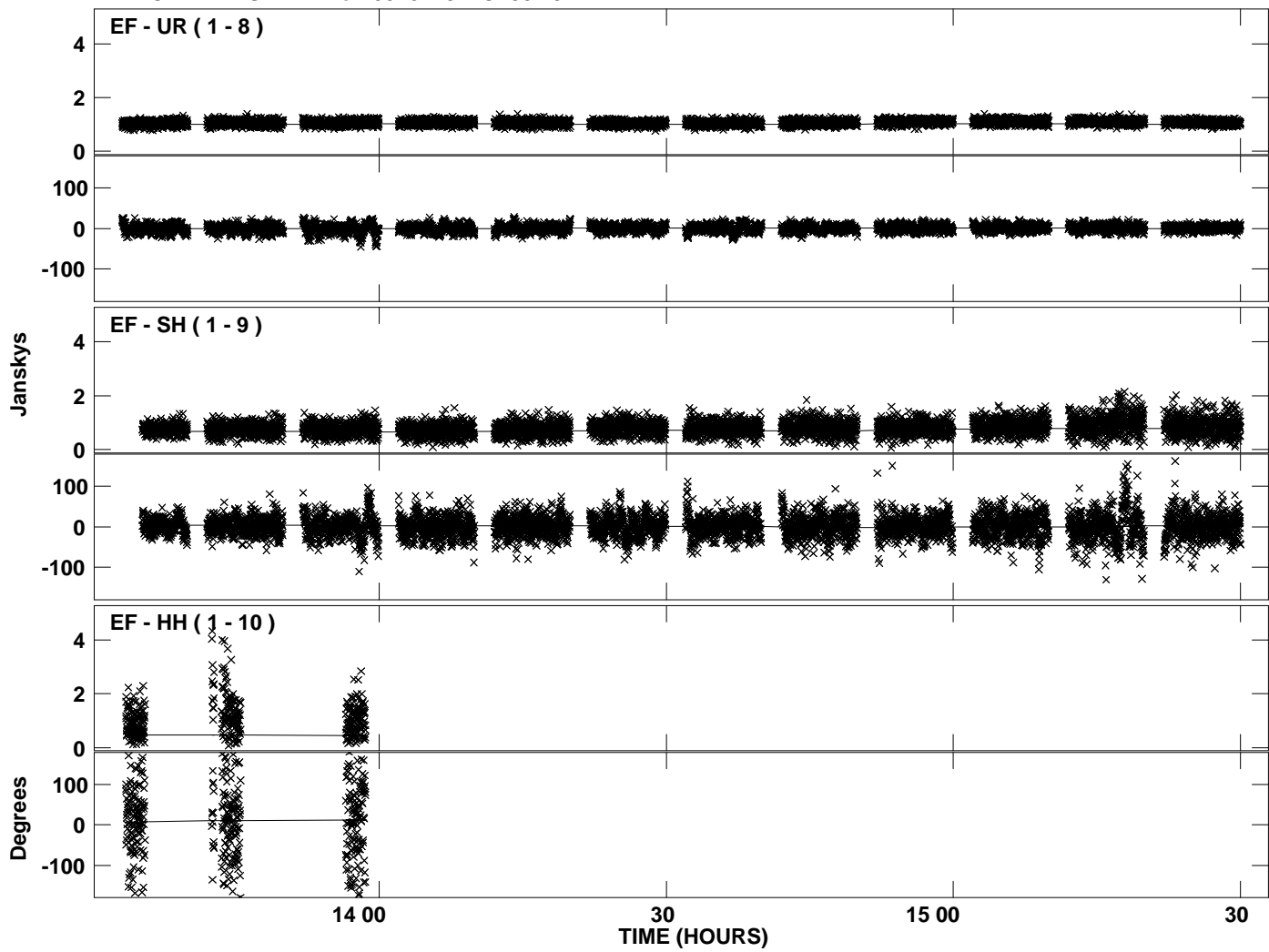
Plot file version 16 created 21-MAY-2012 22:39:06  
Amplitude and Phase vs Time for 0528+134.MULTI.1 CL # 3  
IF 8 CHAN 1 STK LL of 0528+134.ICL001.3



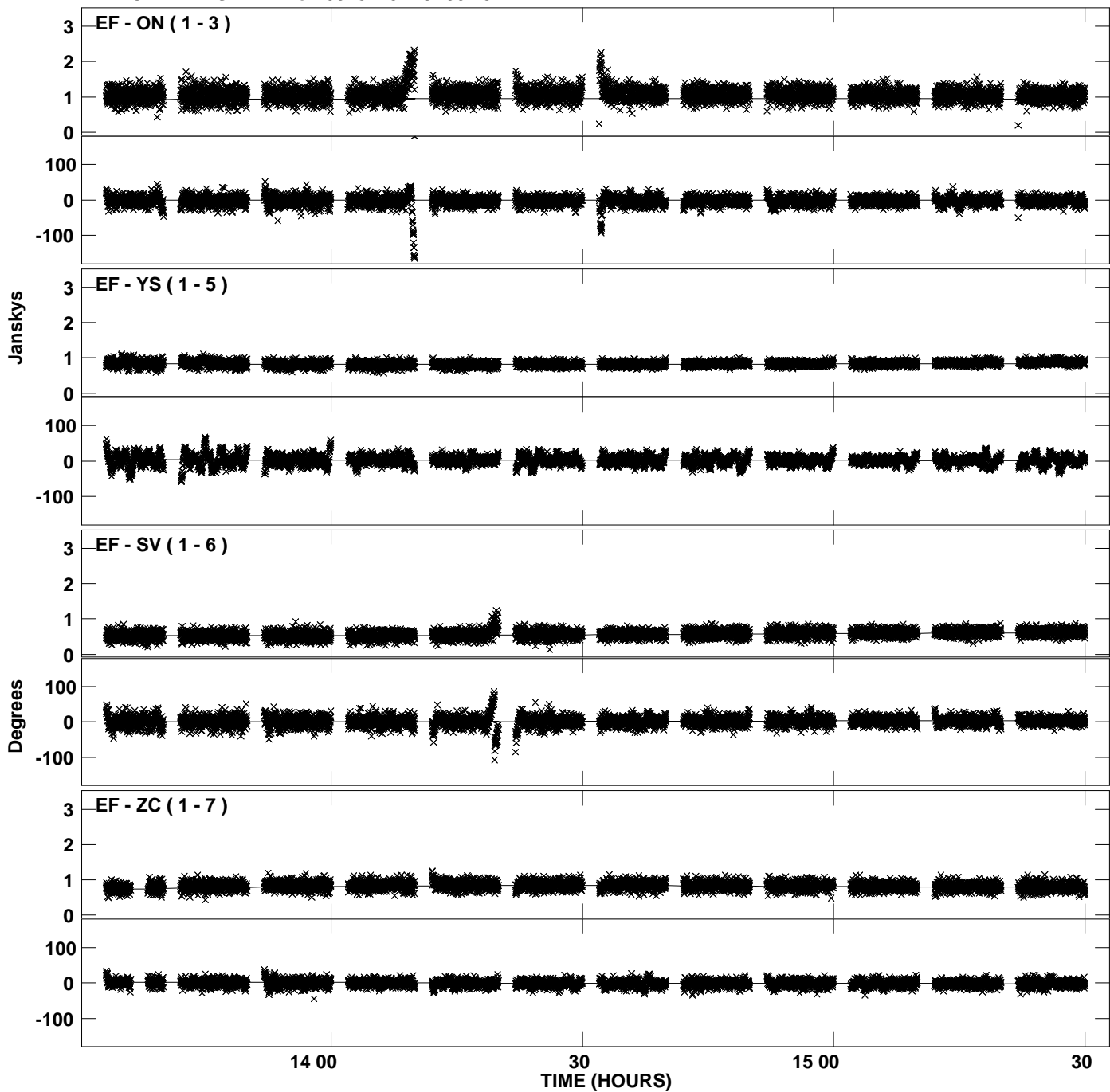
Plot file version 17 created 21-MAY-2012 22:39:08  
Amplitude and Phase vs Time for 0528+134.MULTI.1 CL # 3  
IF 1 CHAN 1 STK RR of 0528+134.ICL001.3



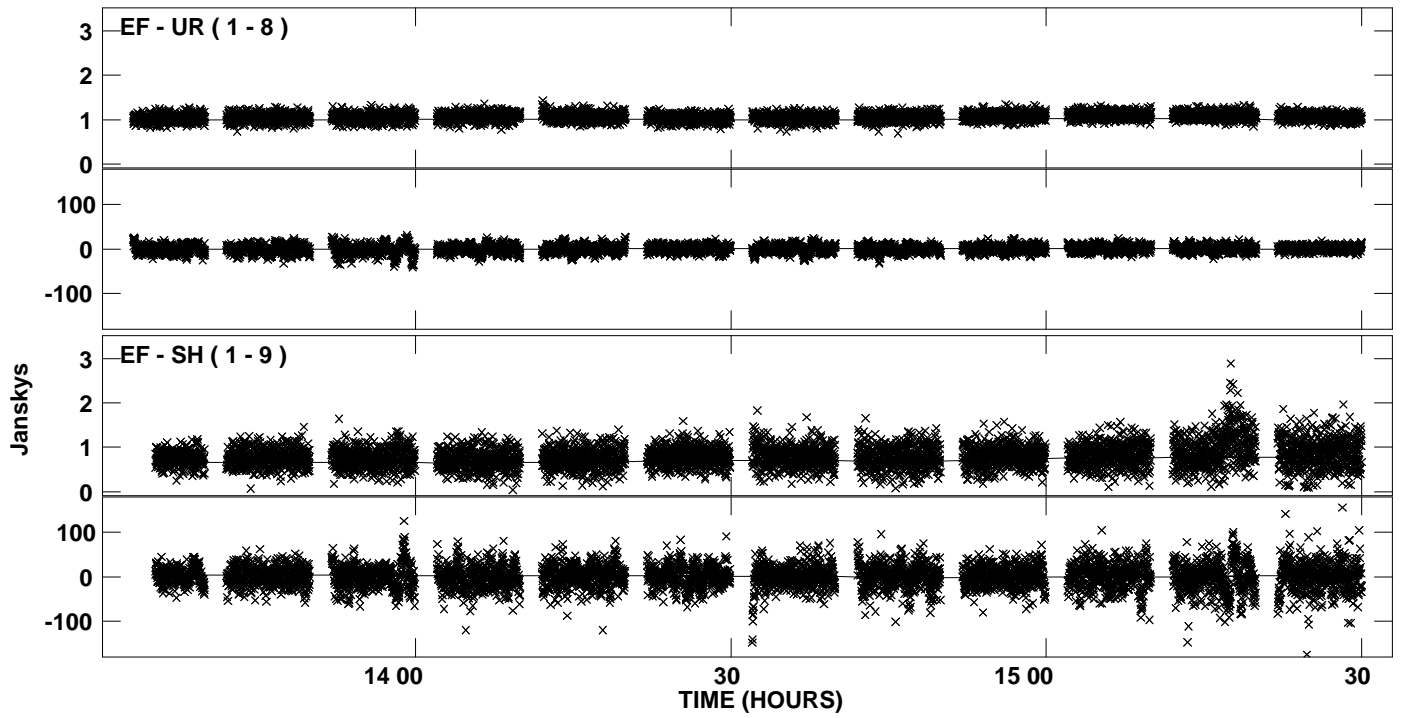
Plot file version 18 created 21-MAY-2012 22:39:08  
Amplitude andPhase vs Time for 0528+134.MULTI.1 CL # 3  
IF 1 CHAN 1 STK RR of 0528+134.ICL001.3



Plot file version 19 created 21-MAY-2012 22:39:09  
Amplitude and Phase vs Time for 0528+134.MULTI.1 CL # 3  
IF 2 CHAN 1 STK RR of 0528+134.ICL001.3

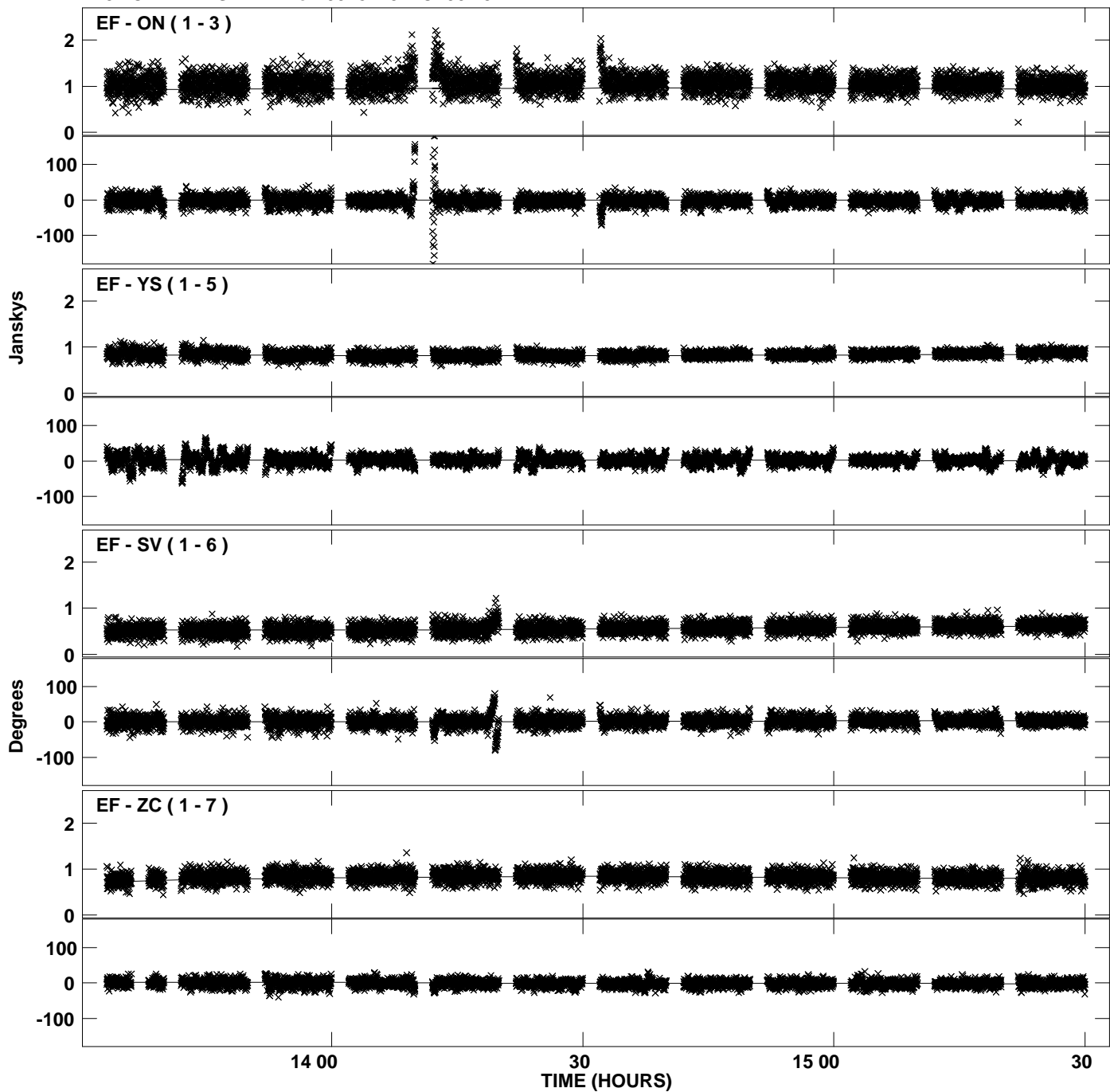


PLot file version 20 created 21-MAY-2012 22:39:09  
Amplitude andPhase vs Time for 0528+134.MULTI.1 CL # 3  
IF 2 CHAN 1 STK RR of 0528+134.ICL001.3

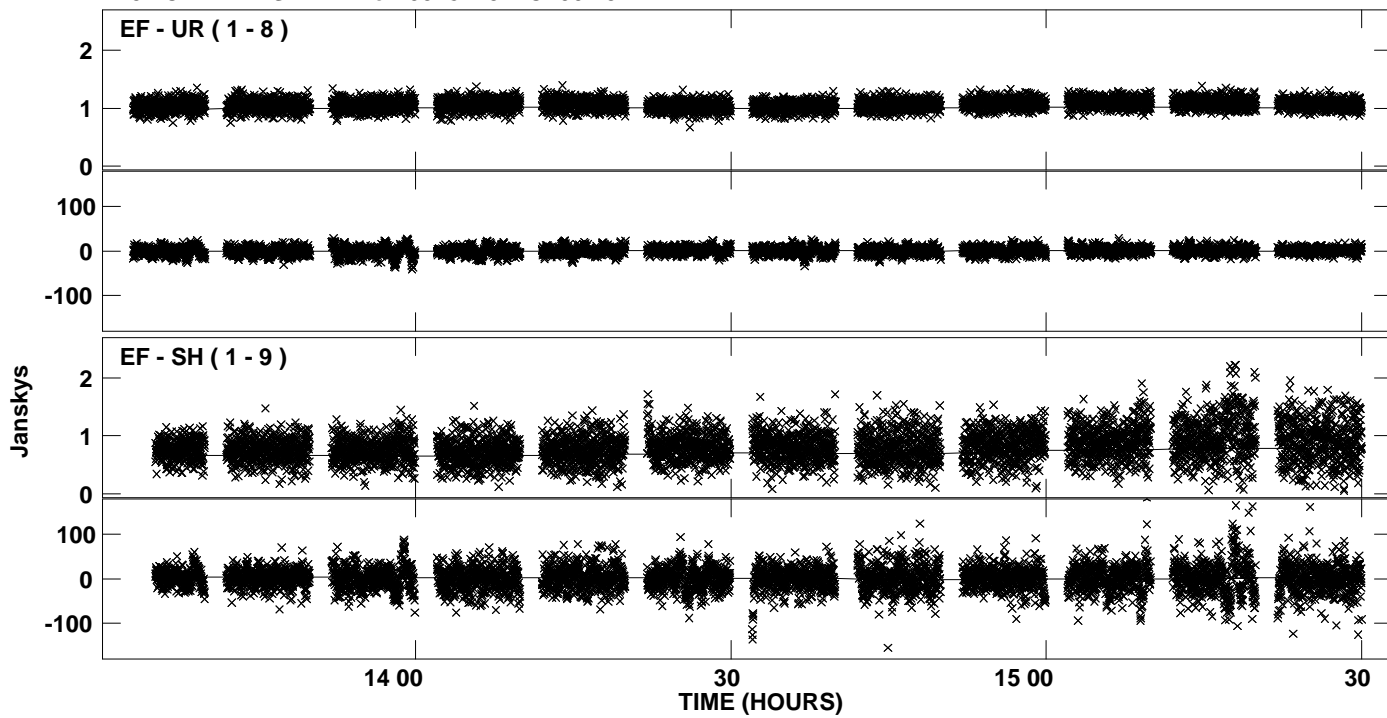




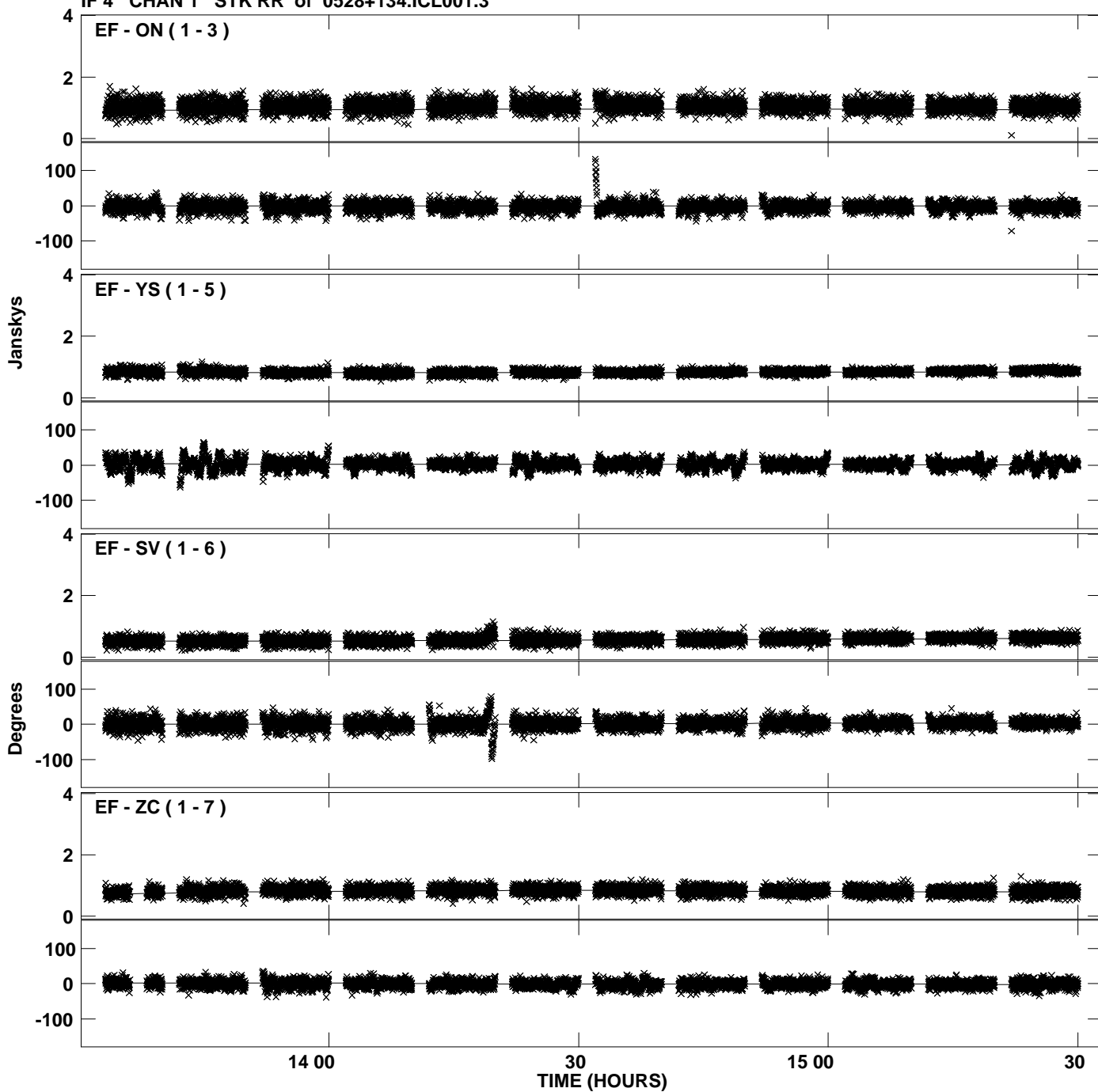
Plot file version 21 created 21-MAY-2012 22:39:11  
Amplitude and Phase vs Time for 0528+134.MULTI.1 CL # 3  
IF 3 CHAN 1 STK RR of 0528+134.ICL001.3



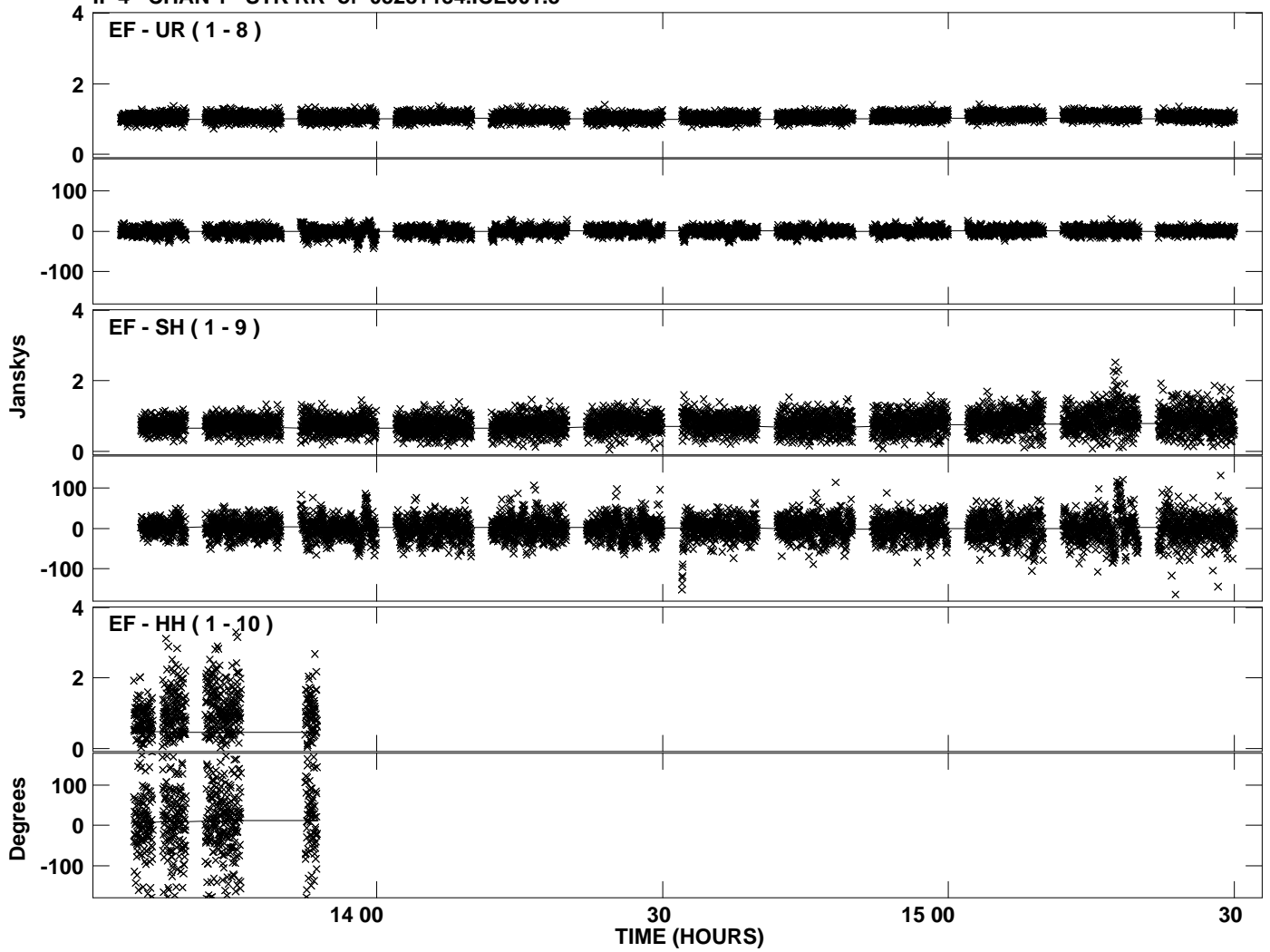
Plot file version 22 created 21-MAY-2012 22:39:11  
Amplitude and Phase vs Time for 0528+134.MULTI.1 CL # 3  
IF 3 CHAN 1 STK RR of 0528+134.ICL001.3



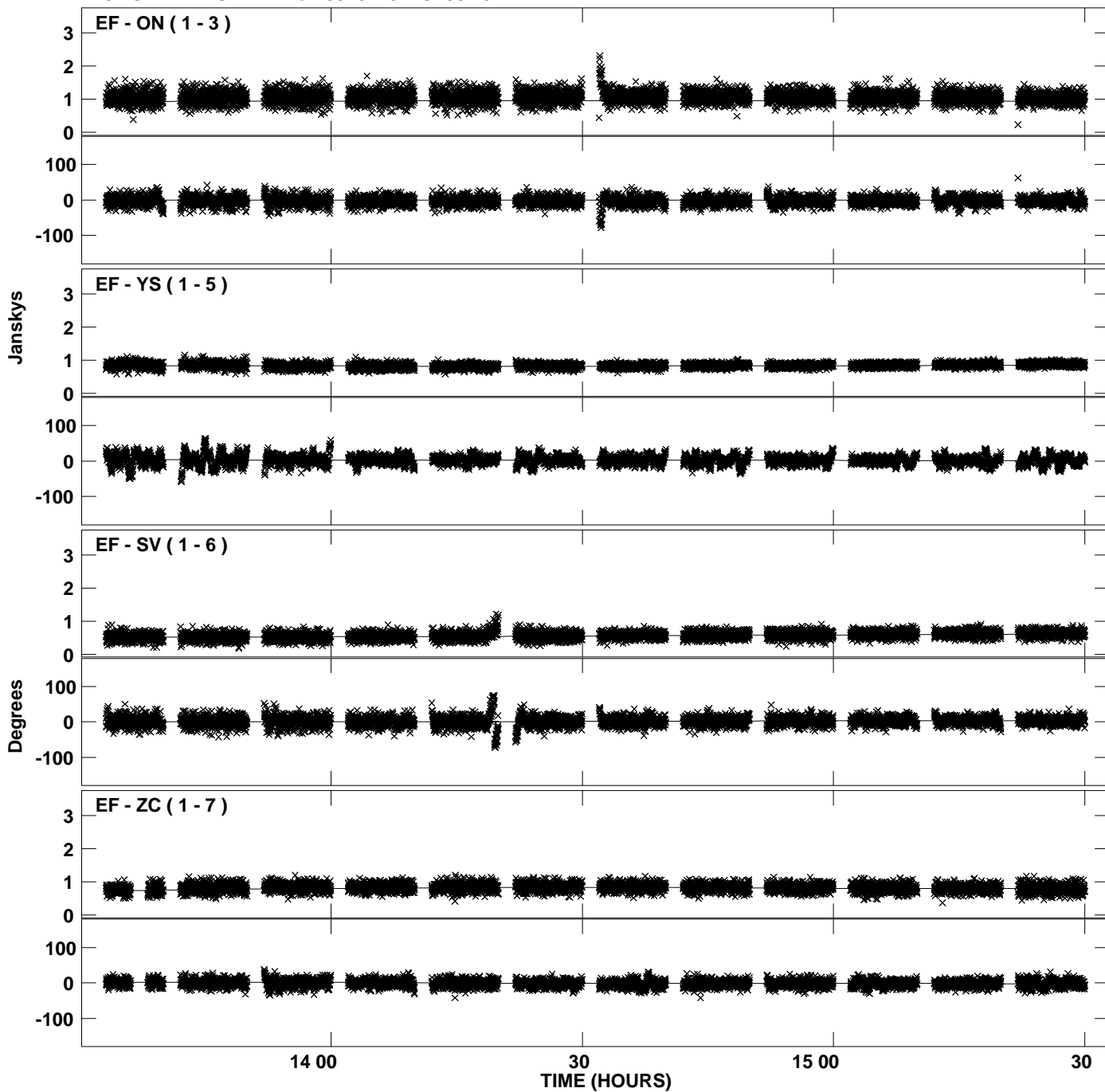
Plot file version 23 created 21-MAY-2012 22:39:12  
Amplitude andPhase vs Time for 0528+134.MULTI.1 CL # 3  
IF 4 CHAN 1 STK RR of 0528+134.ICL001.3



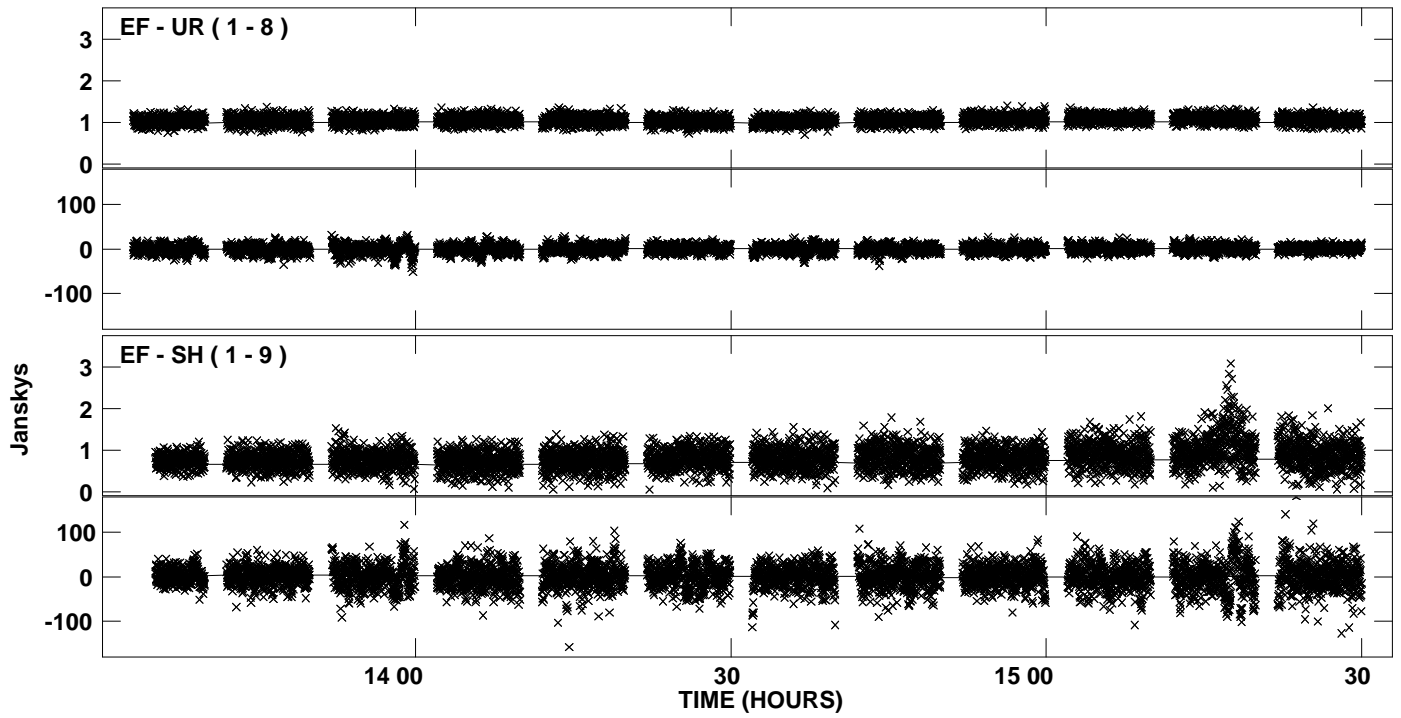
Plot file version 24 created 21-MAY-2012 22:39:12  
Amplitude and Phase vs Time for 0528+134.MULTI.1 CL # 3  
IF 4 CHAN 1 STK RR of 0528+134.ICL001.3



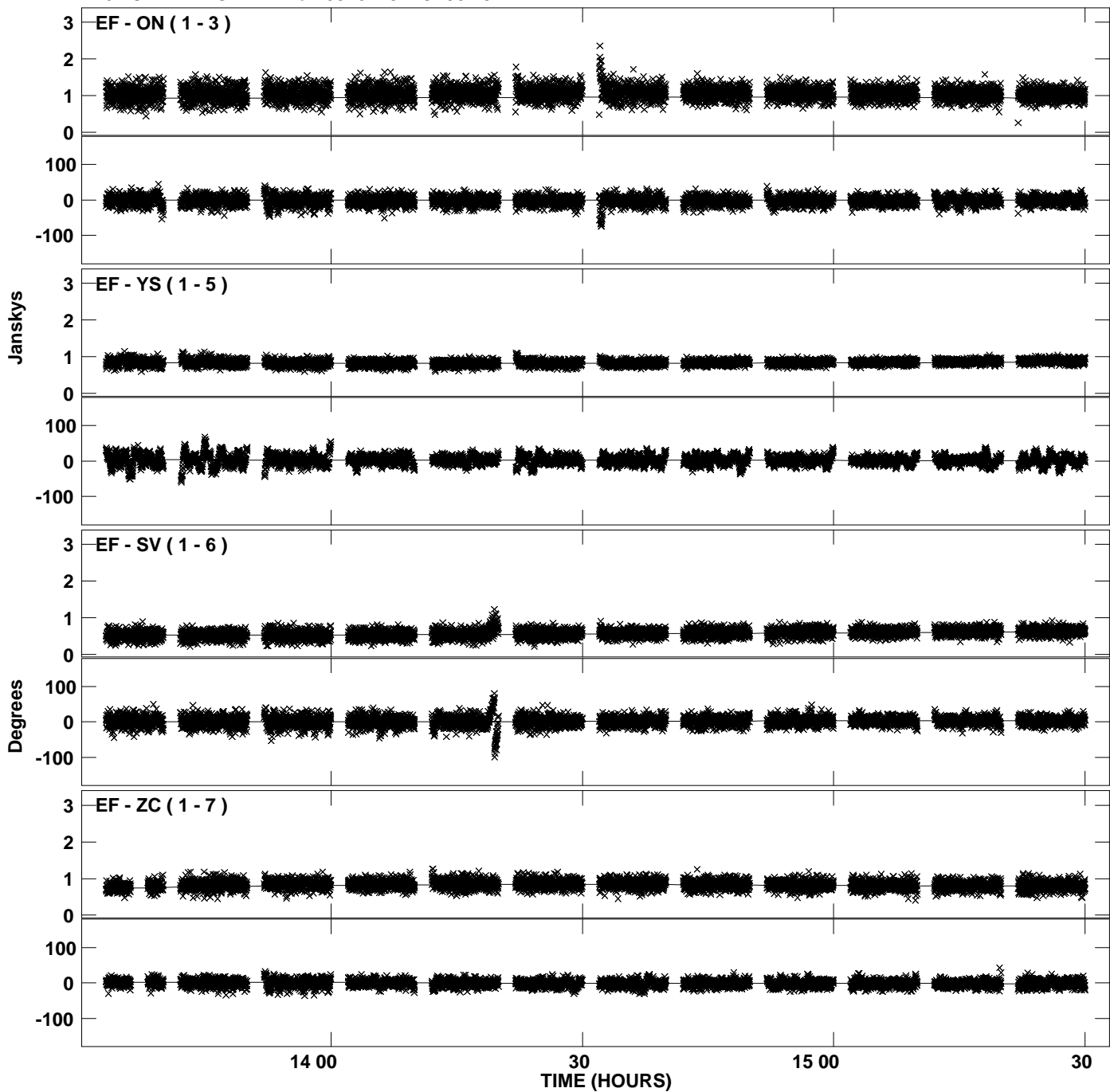
Plot file version 25 created 21-MAY-2012 22:39:14  
Amplitude and Phase vs Time for 0528+134.MULTI.1 CL # 3  
IF 5 CHAN 1 STK RR of 0528+134.ICL001.3



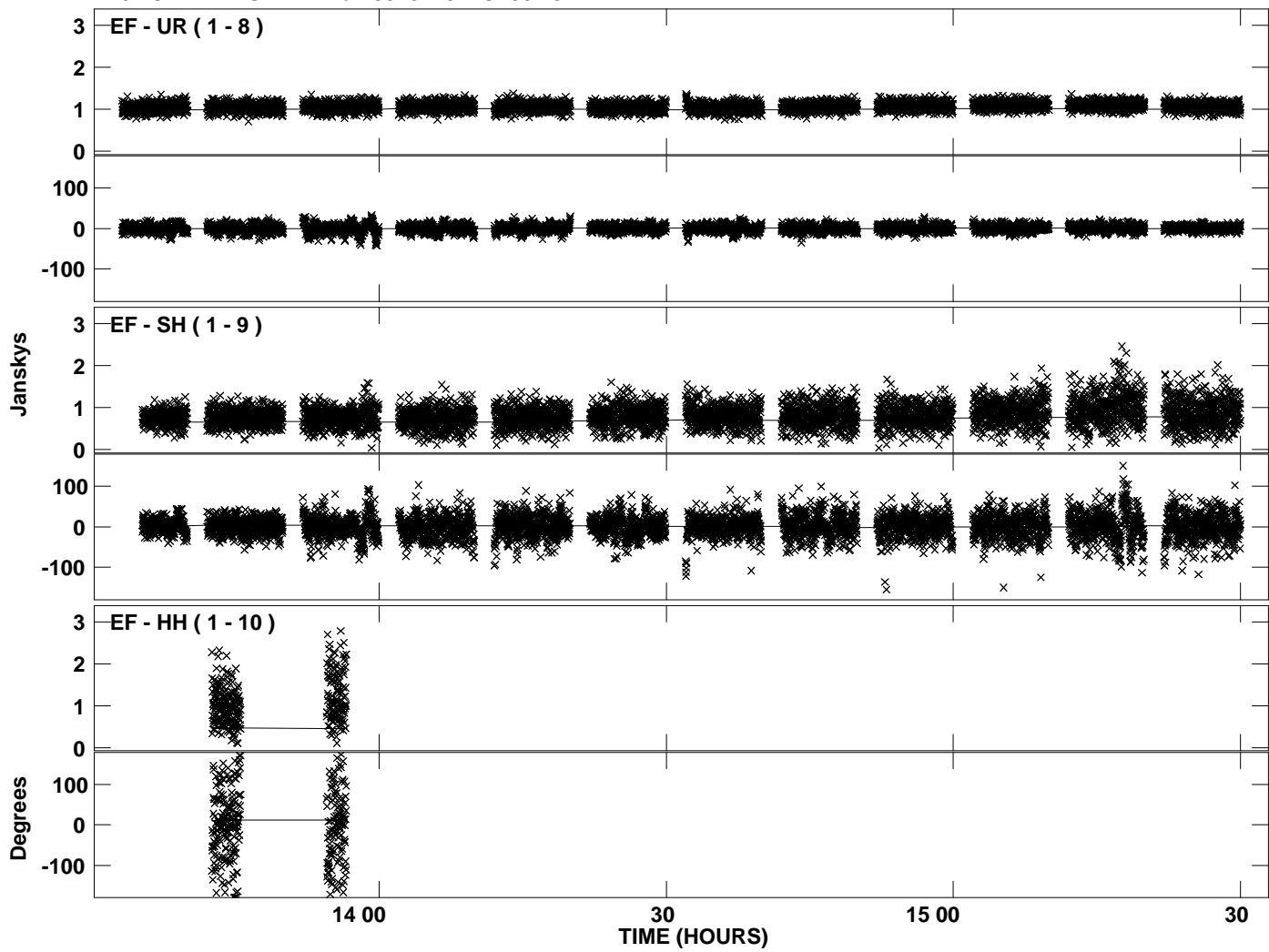
Plot file version 26 created 21-MAY-2012 22:39:14  
Amplitude and Phase vs Time for 0528+134.MULTI.1 CL # 3  
IF 5 CHAN 1 STK RR of 0528+134.ICL001.3



Plot file version 27 created 21-MAY-2012 22:39:15  
Amplitude and Phase vs Time for 0528+134.MULTI.1 CL # 3  
IF 6 CHAN 1 STK RR of 0528+134.ICL001.3

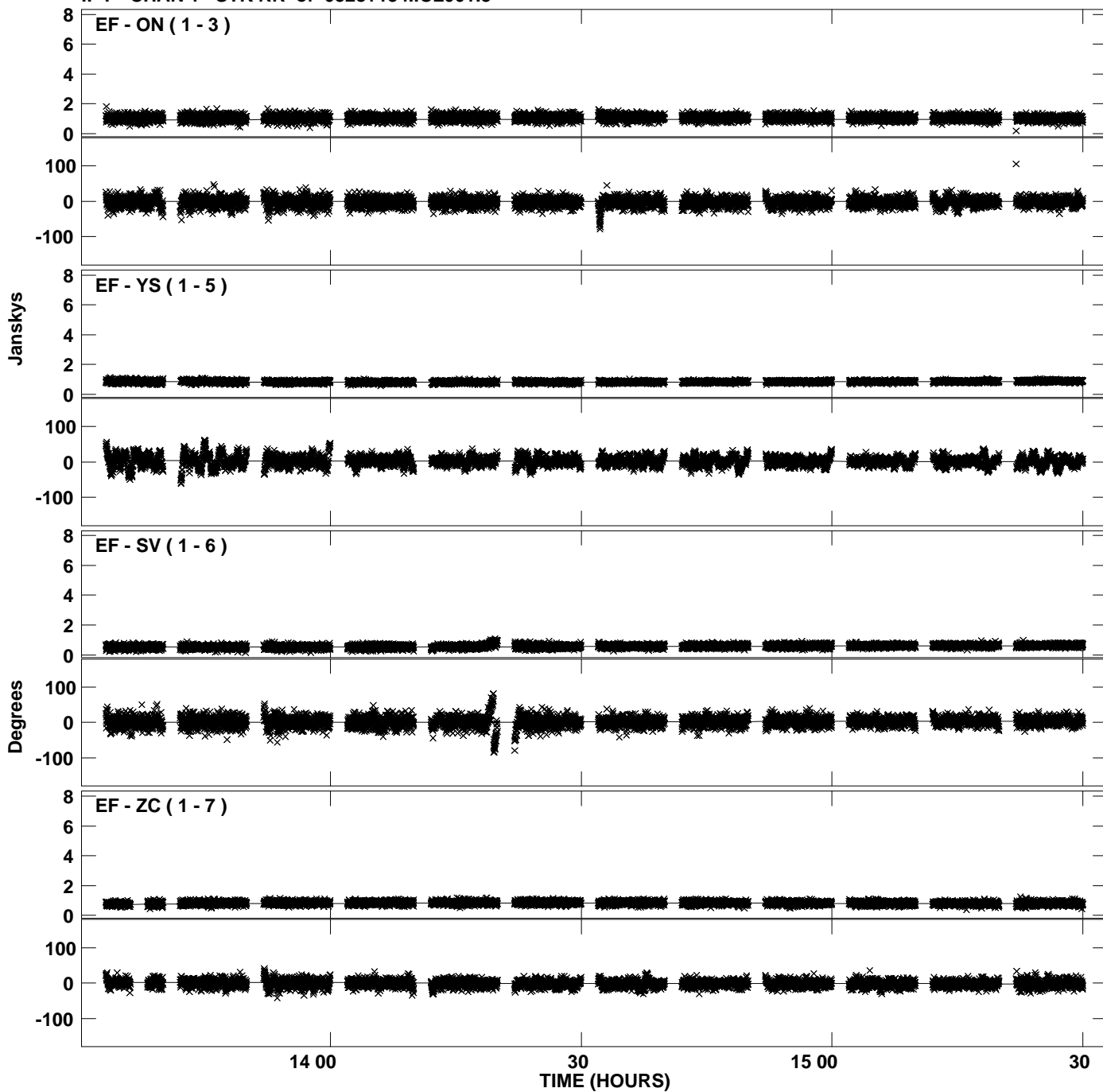


Plot file version 28 created 21-MAY-2012 22:39:16  
Amplitude and Phase vs Time for 0528+134.MULTI.1 CL # 3  
IF 6 CHAN 1 STK RR of 0528+134.ICL001.3

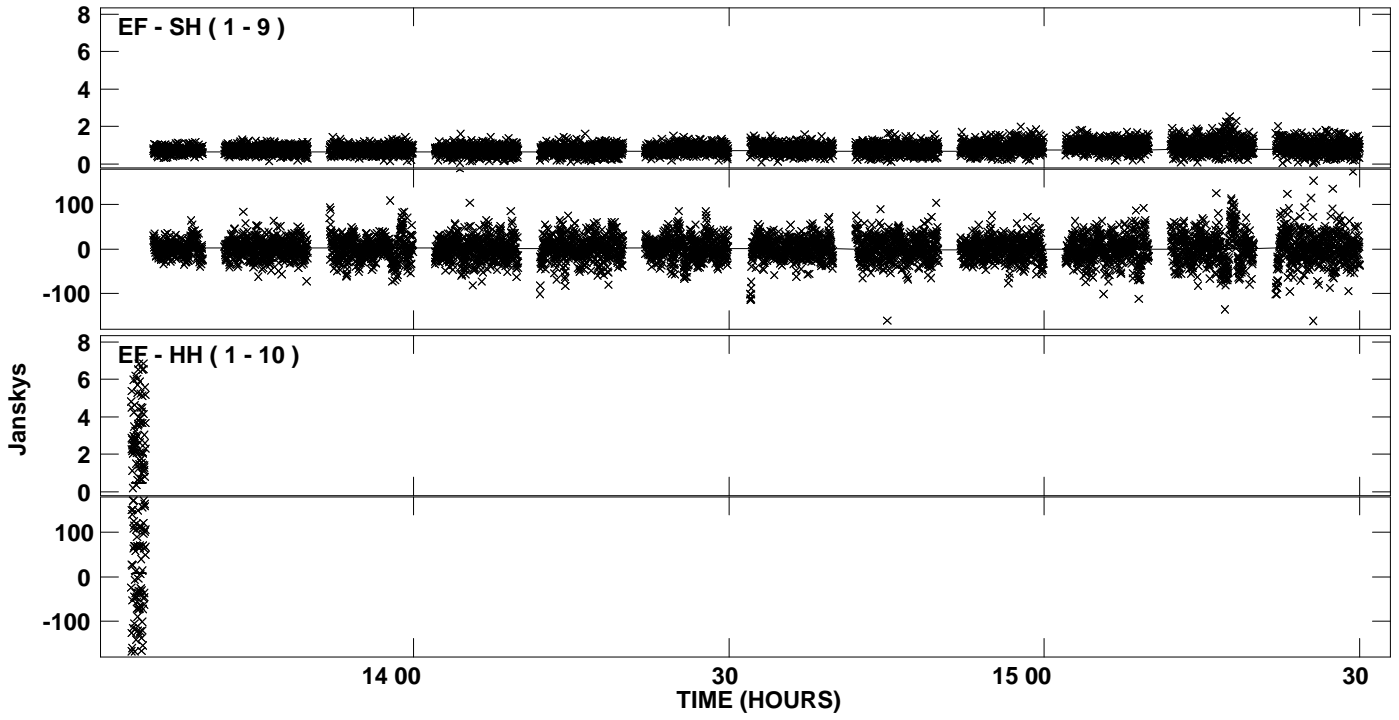




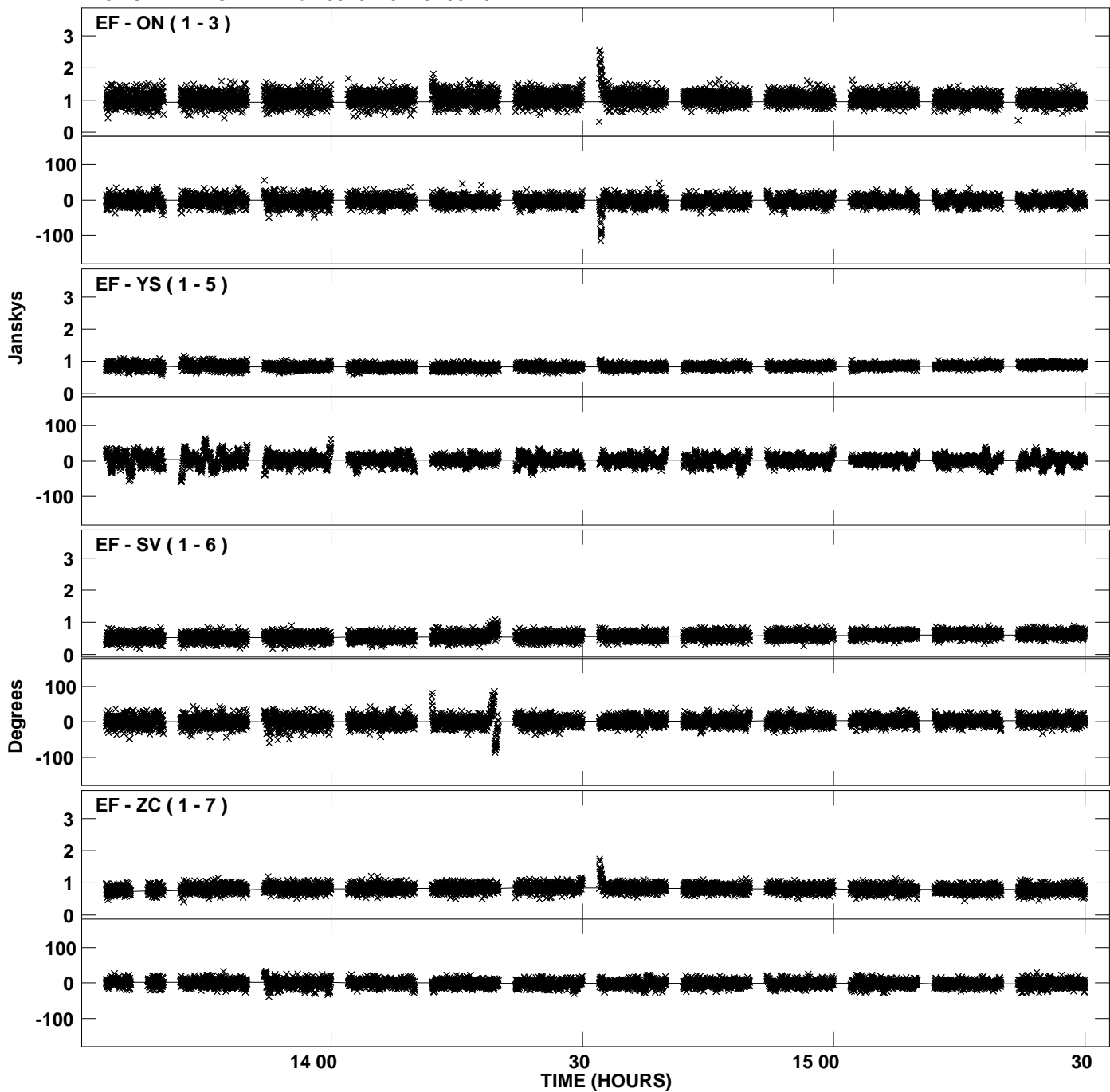
Plot file version 29 created 21-MAY-2012 22:39:17  
Amplitude andPhase vs Time for 0528+134.MULTI.1 CL # 3  
IF 7 CHAN 1 STK RR of 0528+134.ICL001.3



Plot file version 30 created 21-MAY-2012 22:39:17  
Amplitude and Phase vs Time for 0528+134.MULTI.1 CL # 3  
IF 7 CHAN 1 STK RR of 0528+134.ICL001.3



Plot file version 31 created 21-MAY-2012 22:39:18  
Amplitude andPhase vs Time for 0528+134.MULTI.1 CL # 3  
IF 8 CHAN 1 STK RR of 0528+134.ICL001.3



Plot file version 32 created 21-MAY-2012 22:39:18  
Amplitude and Phase vs Time for 0528+134.MULTI.1 CL # 3  
IF 8 CHAN 1 STK RR of 0528+134.ICL001.3

