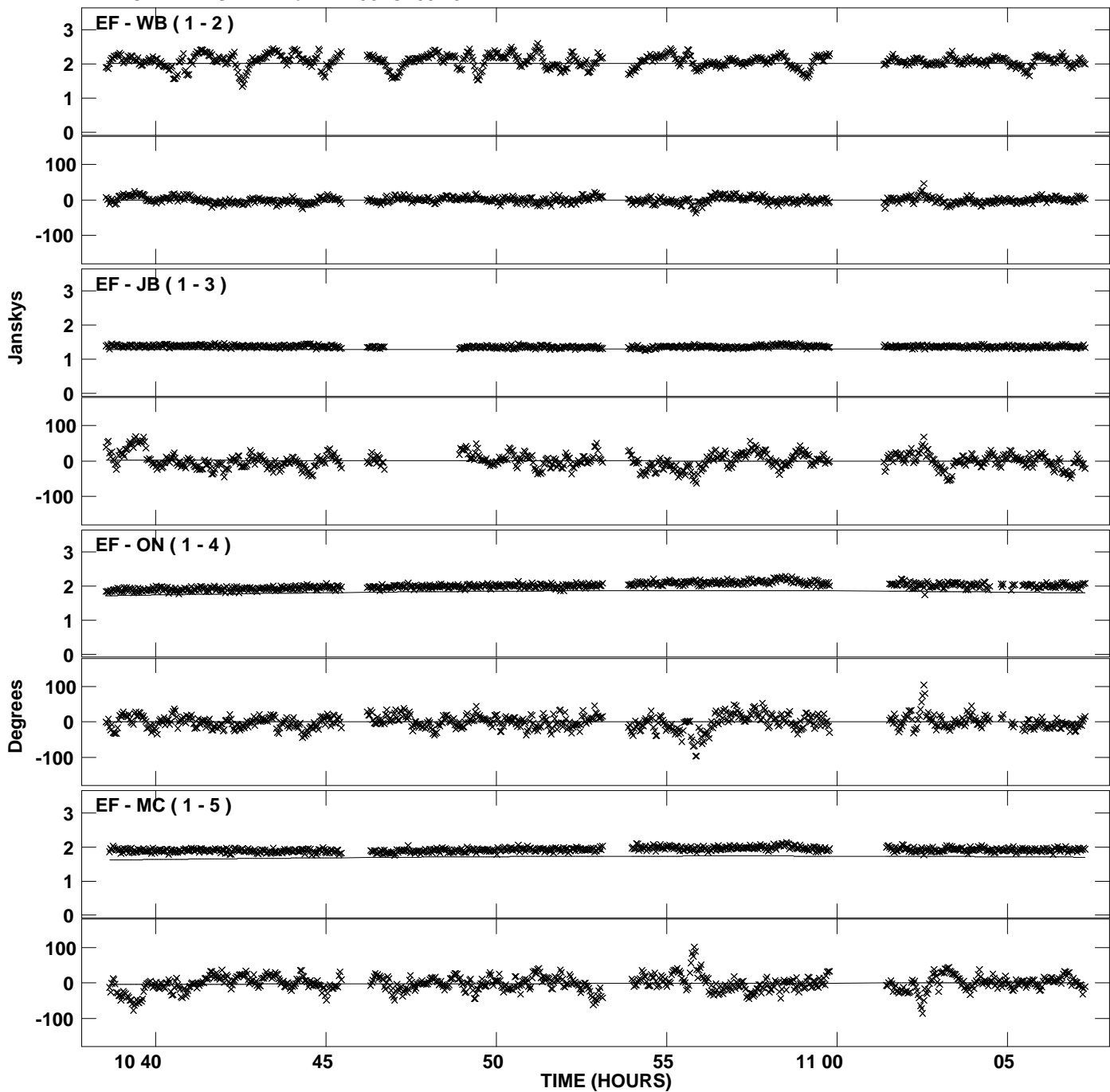
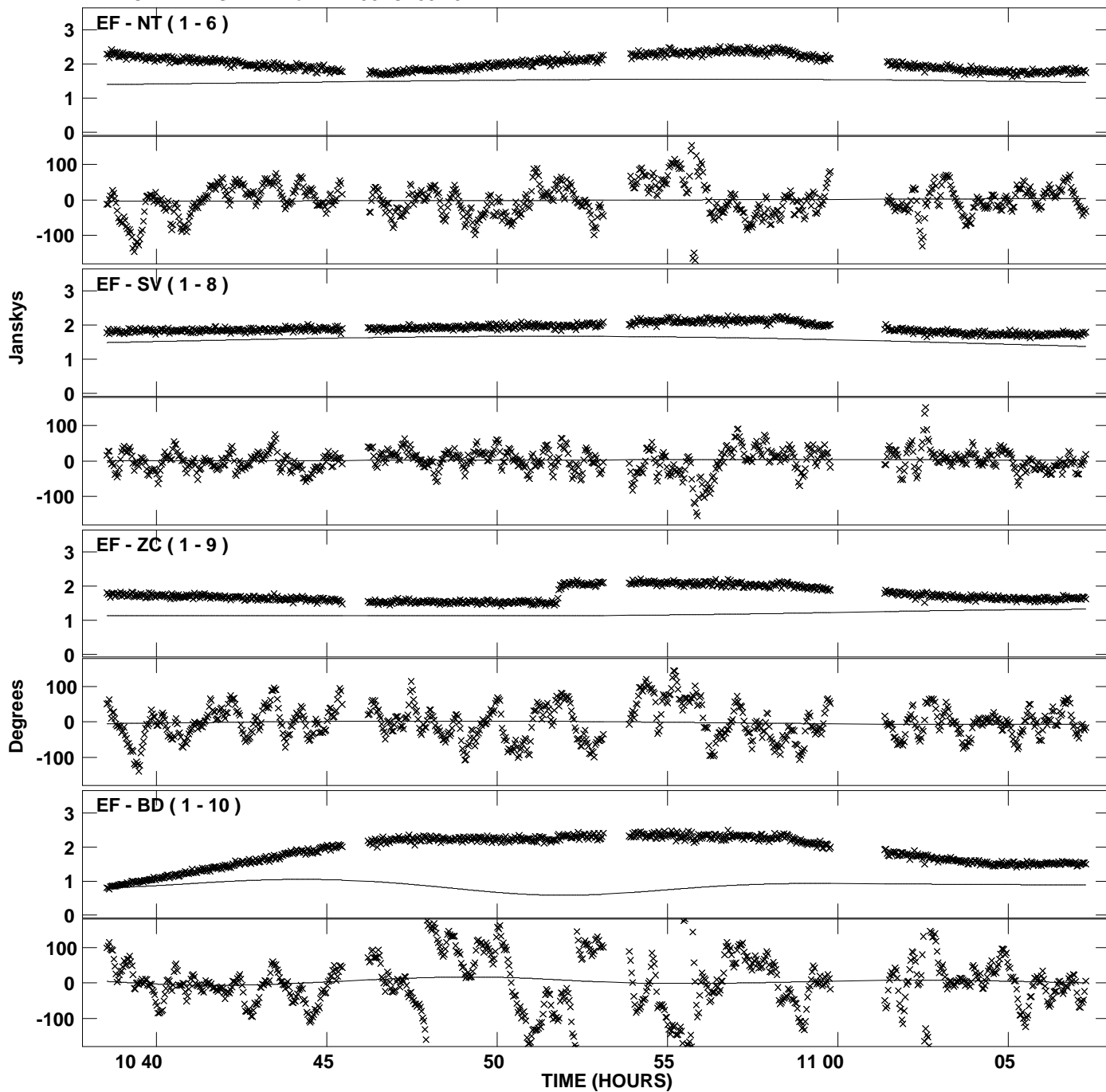


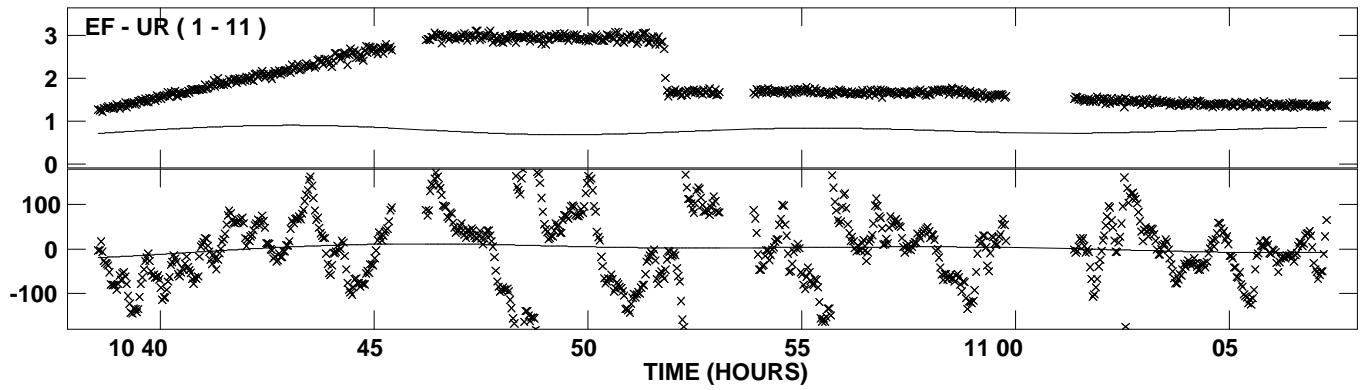
Plot file version 1 created 25-JUL-2012 21:27:44  
Amplitude and Phase vs Time for DA193.MULTI.1 CL # 3  
IF 1 CHAN 1 STK LL of DA193.ICL001.3



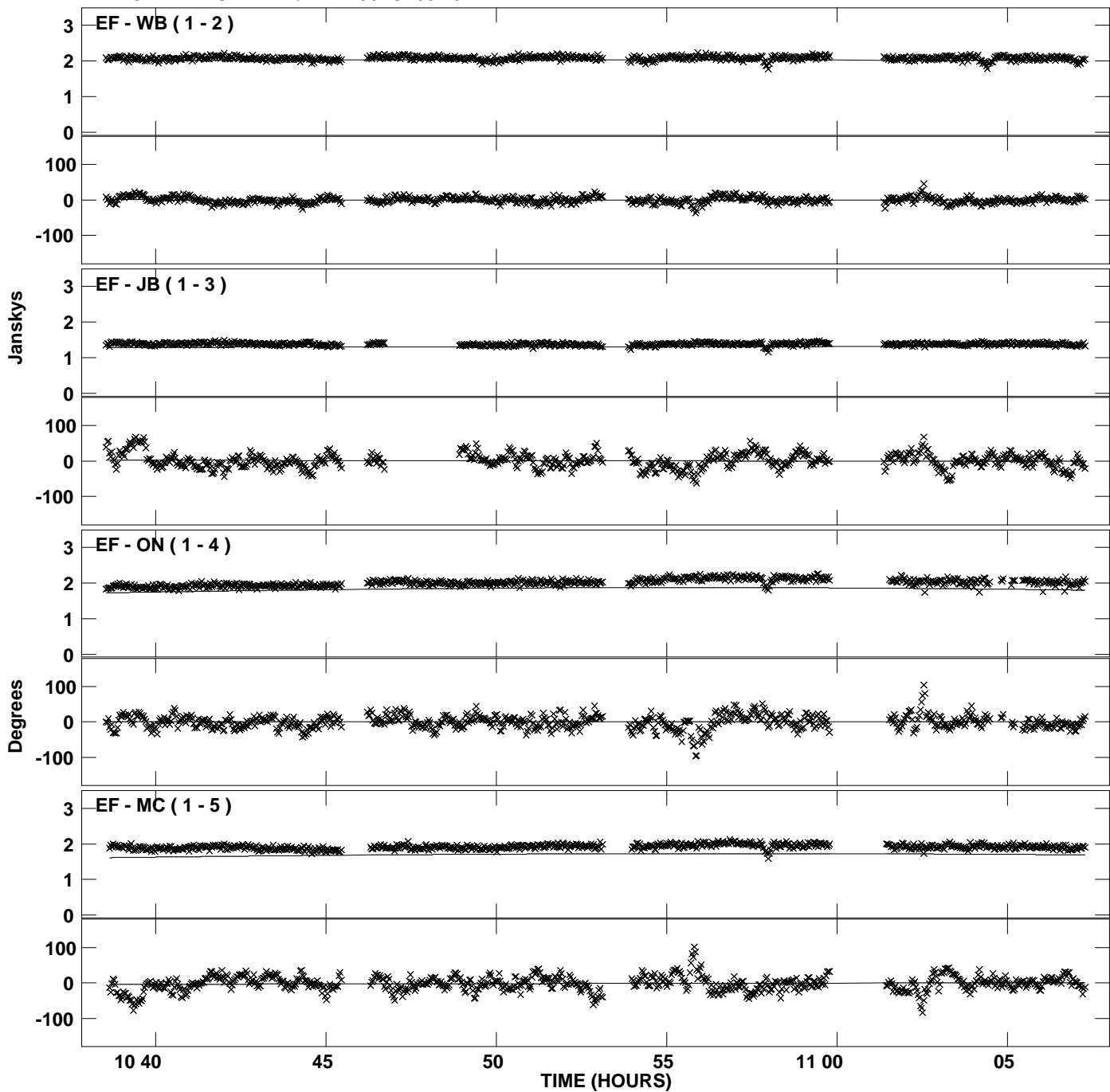
Plot file version 2 created 25-JUL-2012 21:27:44  
Amplitude and Phase vs Time for DA193.MULTI.1 CL # 3  
IF 1 CHAN 1 STK LL of DA193.ICL001.3



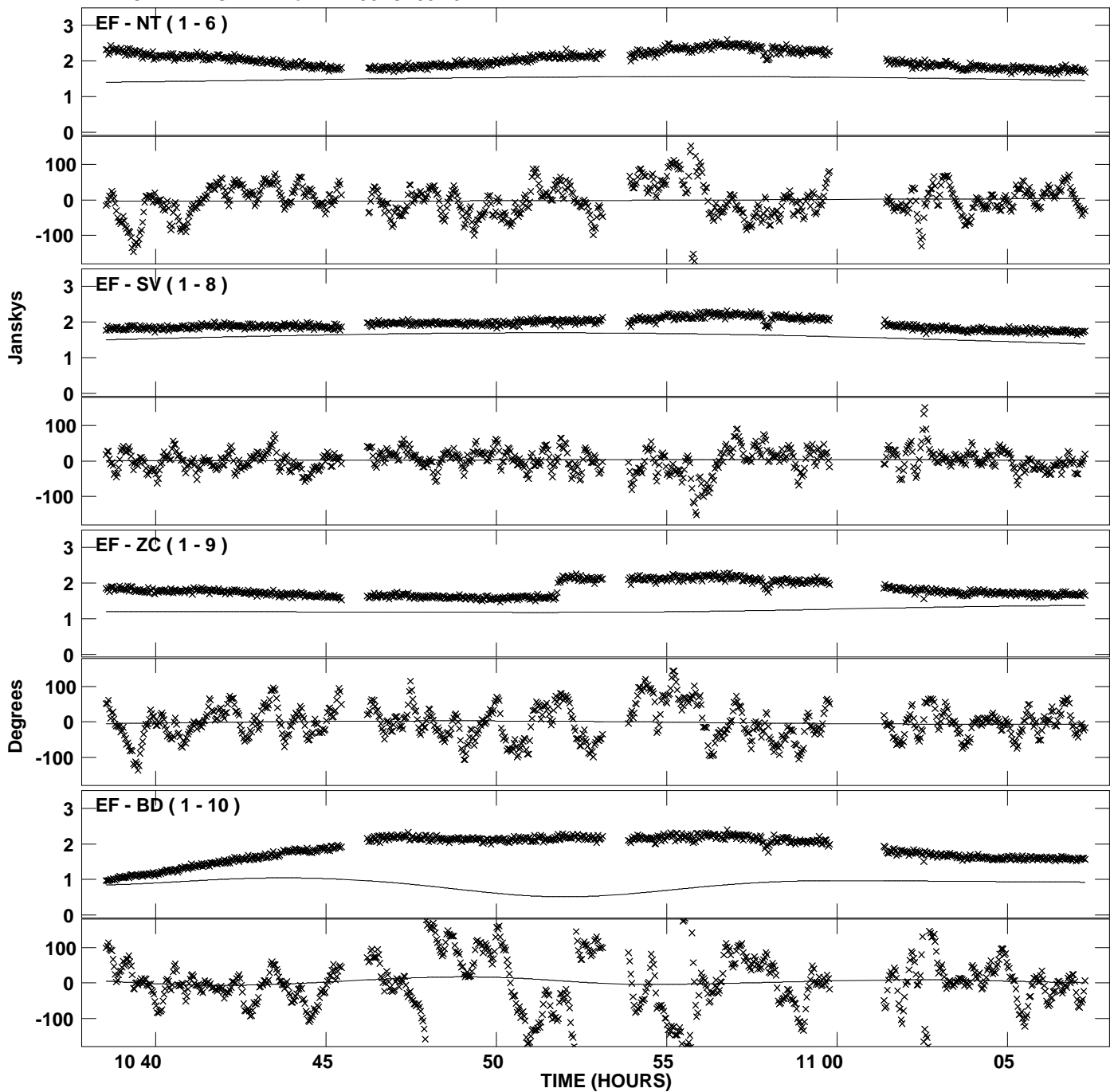
Plot file version 3 created 25-JUL-2012 21:27:44  
Amplitude and Phase vs Time for DA193.MULTI.1 CL # 3  
IF 1 CHAN 1 STK LL of DA193.ICL001.3



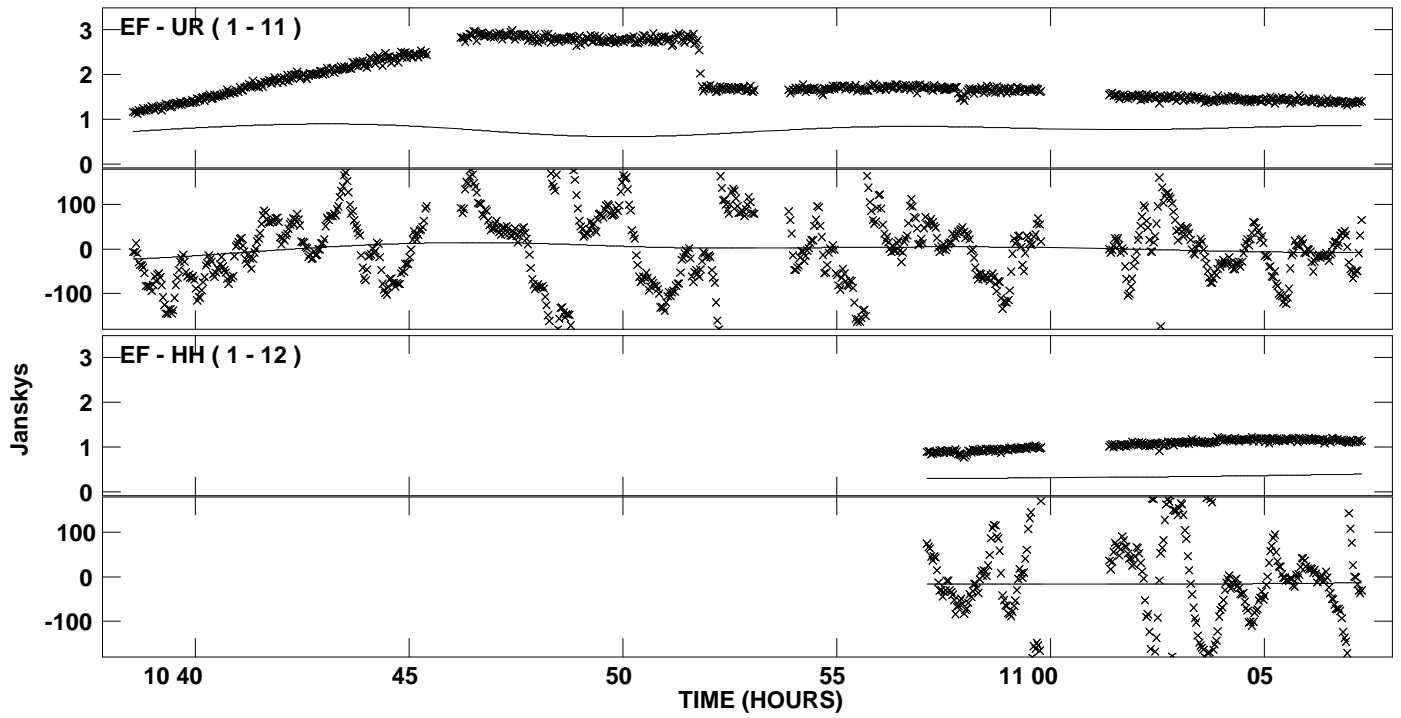
Plot file version 4 created 25-JUL-2012 21:27:44  
Amplitude and Phase vs Time for DA193.MULTI.1 CL # 3  
IF 2 CHAN 1 STK LL of DA193.ICL001.3



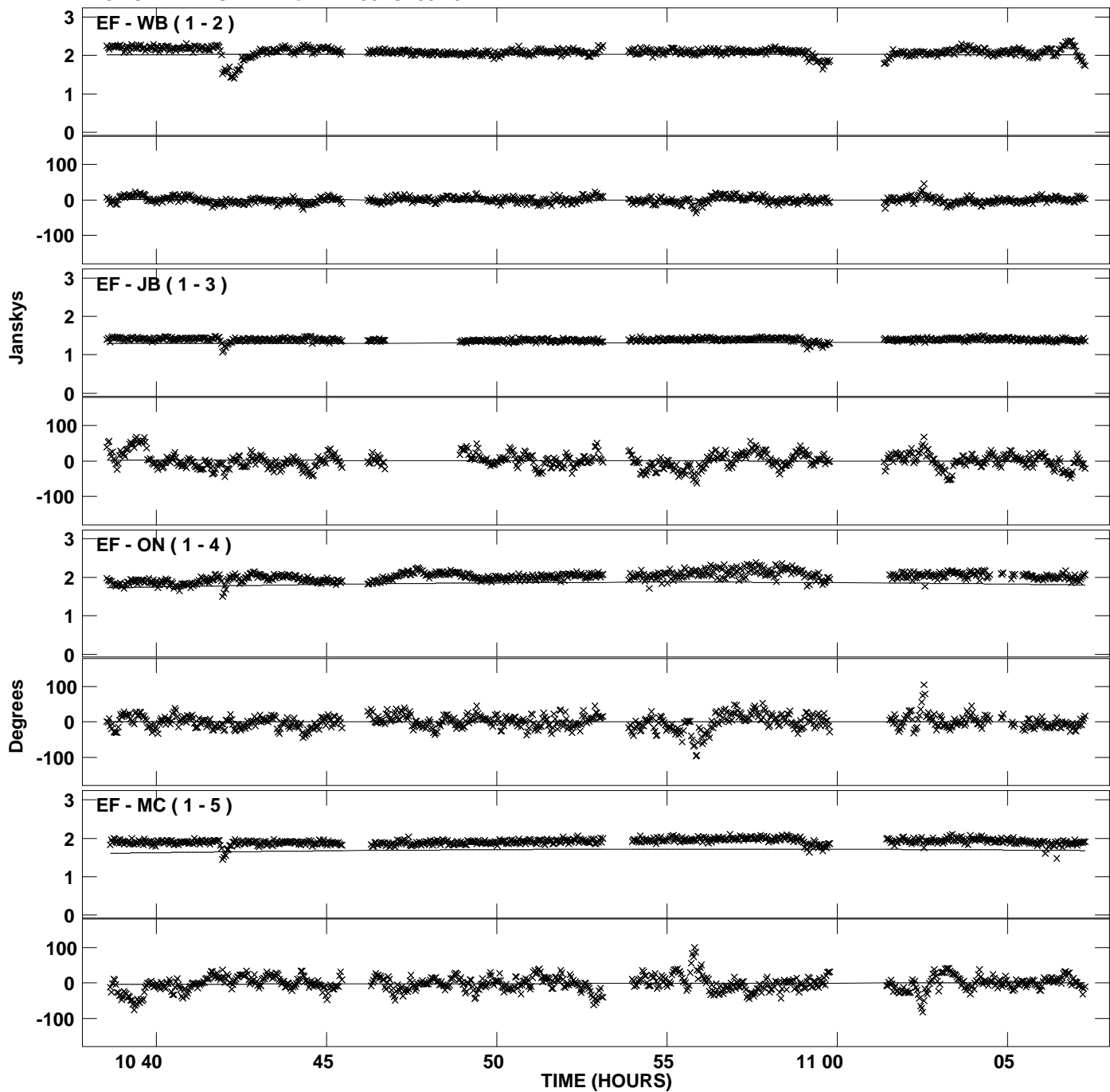
Plot file version 5 created 25-JUL-2012 21:27:44  
Amplitude and Phase vs Time for DA193.MULTI.1 CL # 3  
IF 2 CHAN 1 STK LL of DA193.ICL001.3



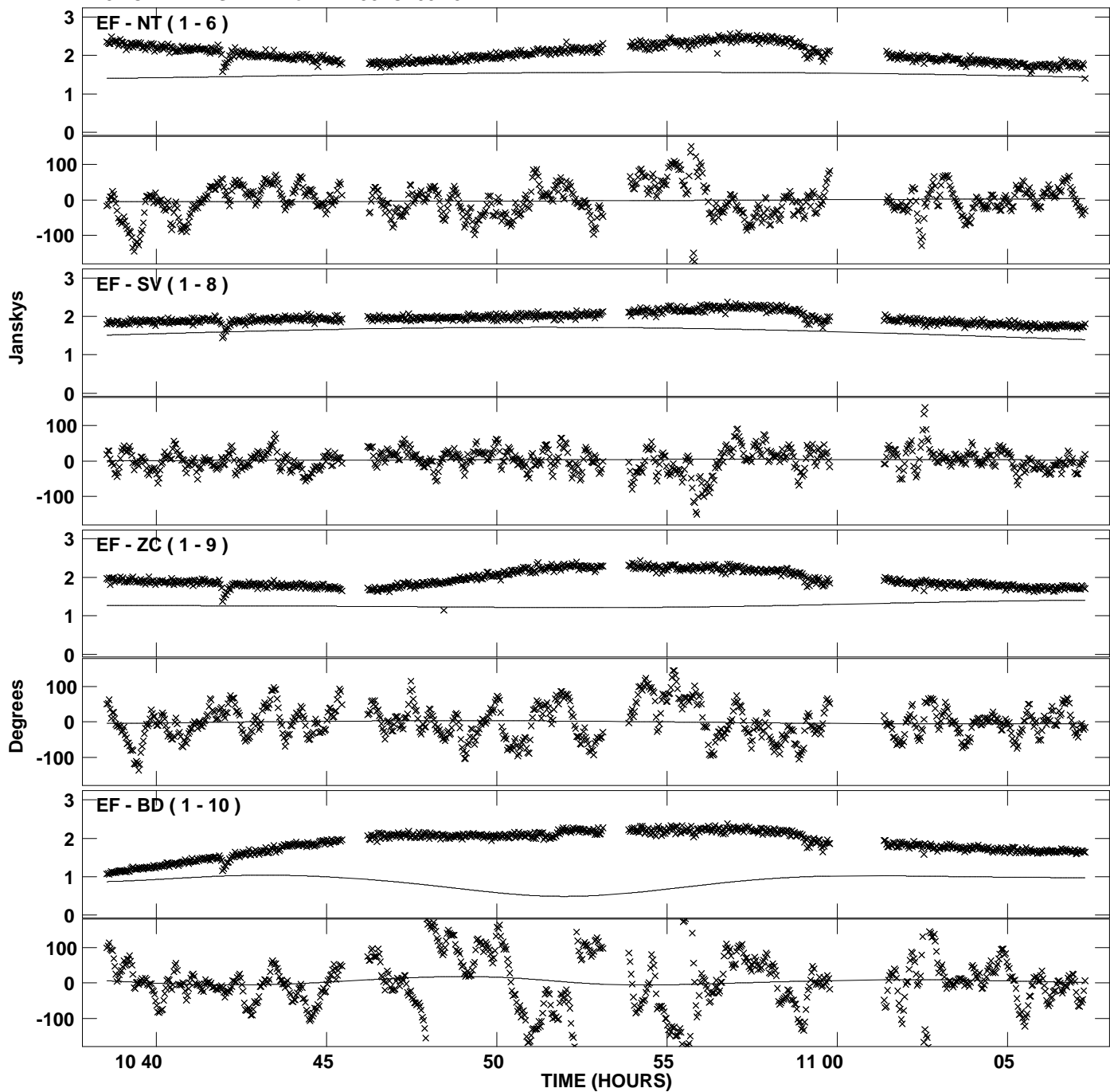
Plot file version 6 created 25-JUL-2012 21:27:44  
Amplitude and Phase vs Time for DA193.MULTI.1 CL # 3  
IF 2 CHAN 1 STK LL of DA193.ICL001.3



Plot file version 7 created 25-JUL-2012 21:27:44  
Amplitude and Phase vs Time for DA193.MULTI.1 CL # 3  
IF 3 CHAN 1 STK LL of DA193.ICL001.3

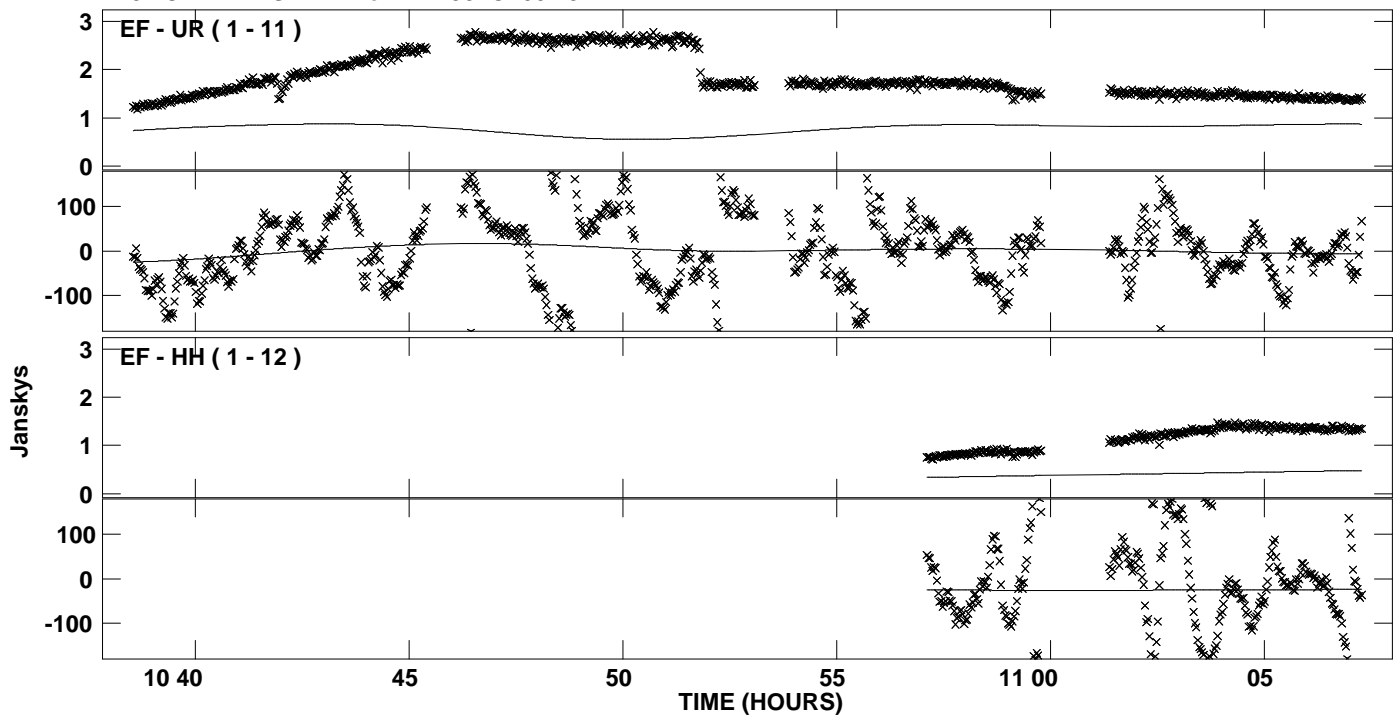


Plot file version 8 created 25-JUL-2012 21:27:44  
Amplitude and Phase vs Time for DA193.MULTI.1 CL # 3  
IF 3 CHAN 1 STK LL of DA193.ICL001.3

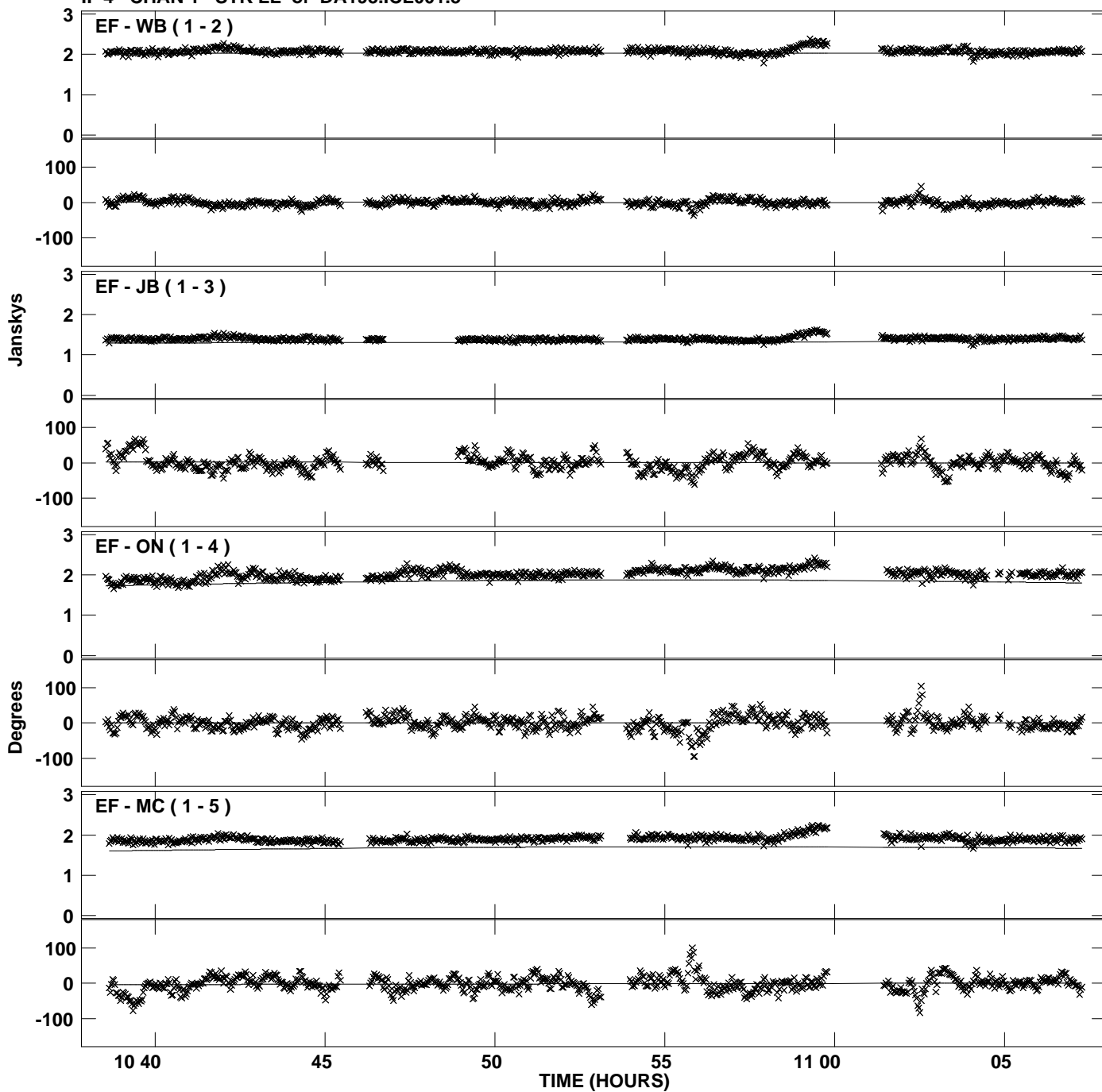




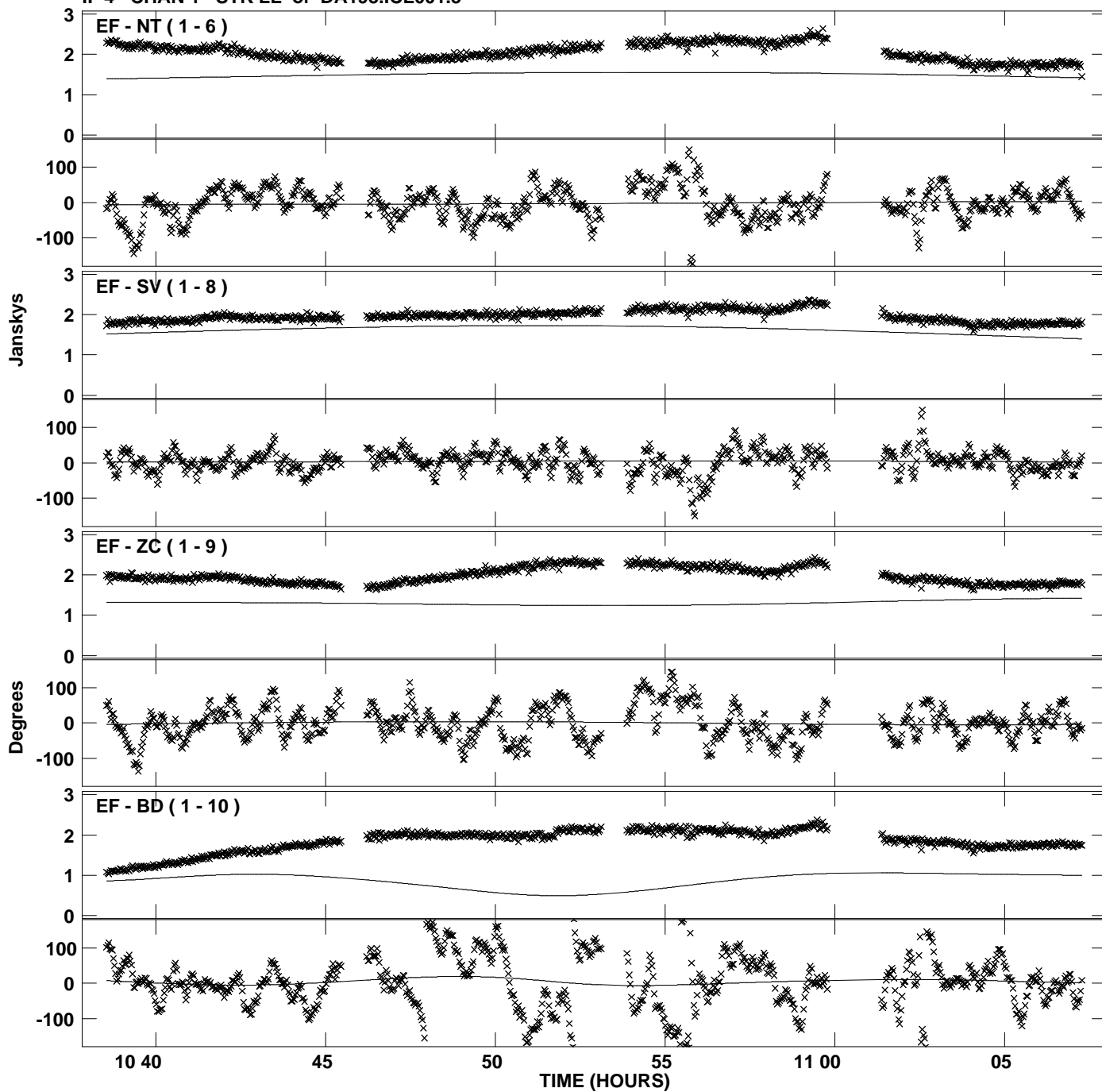
PLot file version 9 created 25-JUL-2012 21:27:44  
Amplitude andPhase vs Time for DA193.MULTI.1 CL # 3  
IF 3 CHAN 1 STK LL of DA193.ICL001.3



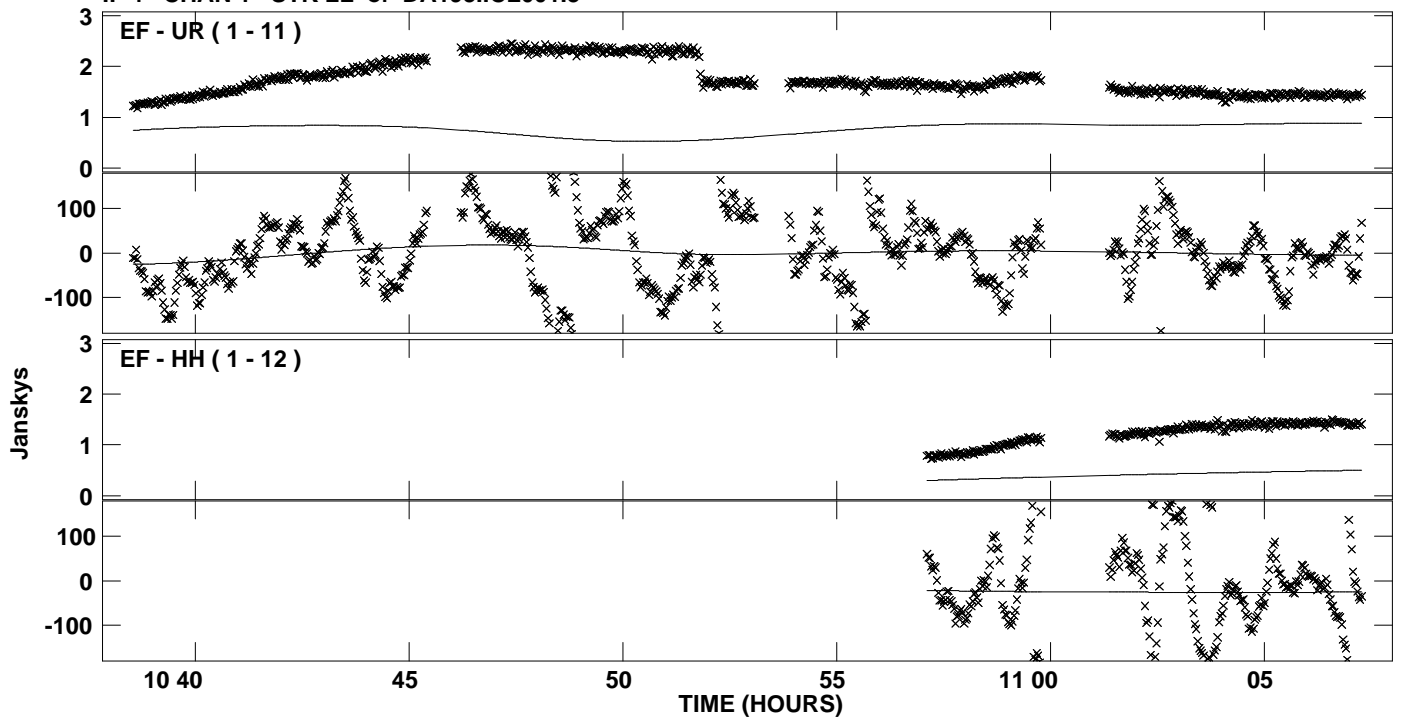
Plot file version 10 created 25-JUL-2012 21:27:44  
Amplitude and Phase vs Time for DA193.MULTI.1 CL # 3  
IF 4 CHAN 1 STK LL of DA193.ICL001.3



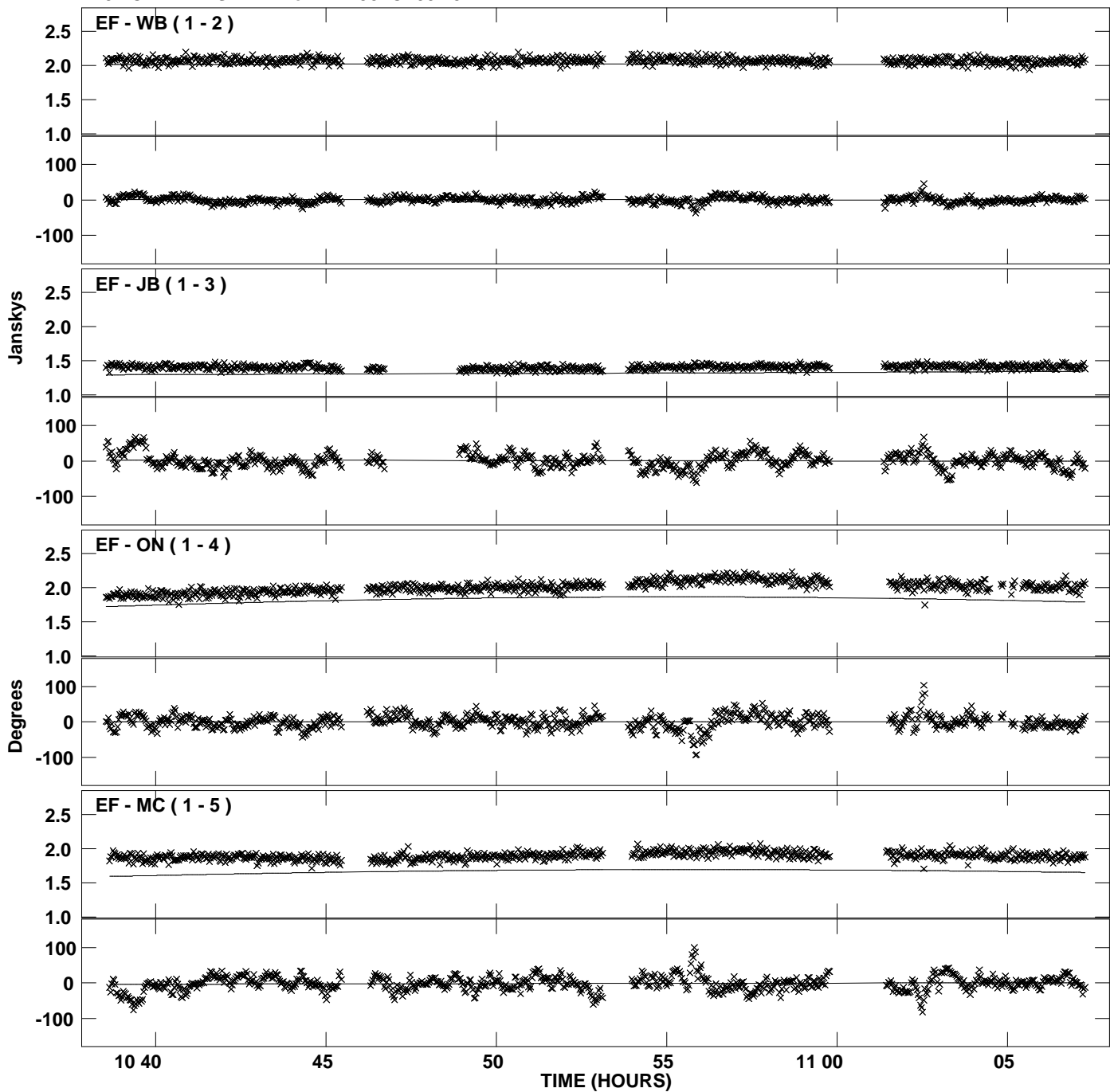
Plot file version 11 created 25-JUL-2012 21:27:44  
Amplitude and Phase vs Time for DA193.MULTI.1 CL # 3  
IF 4 CHAN 1 STK LL of DA193.ICL001.3



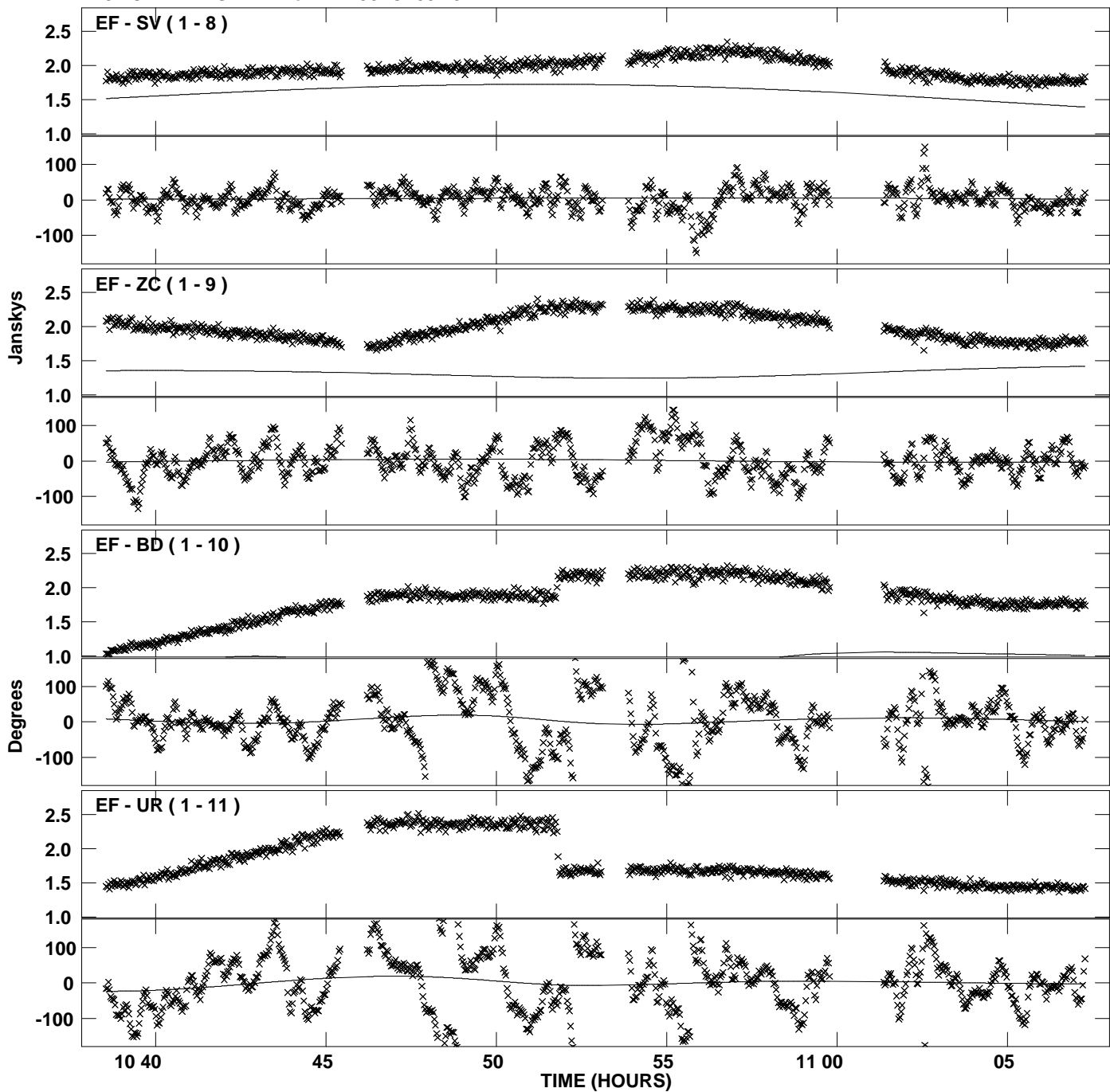
PLot file version 12 created 25-JUL-2012 21:27:44  
Amplitude andPhase vs Time for DA193.MULTI.1 CL # 3  
IF 4 CHAN 1 STK LL of DA193.ICL001.3



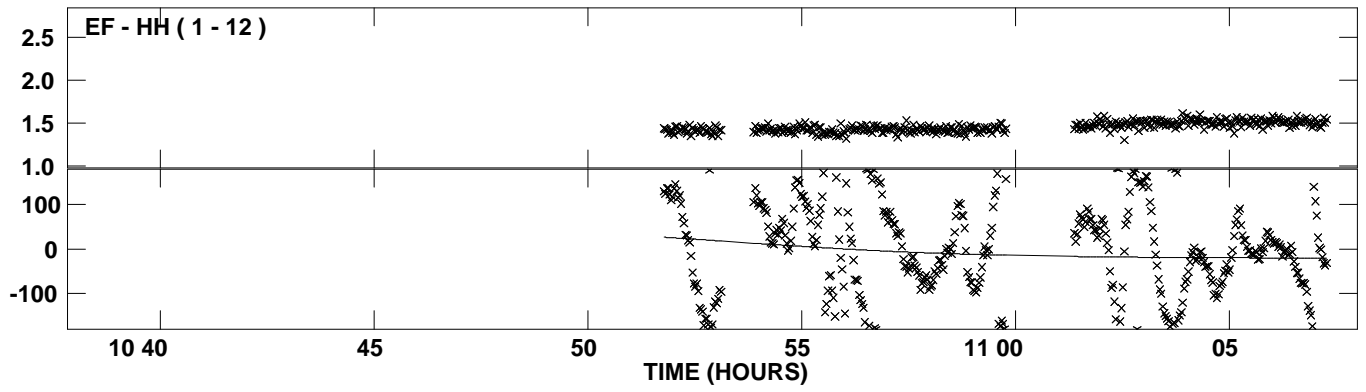
Plot file version 13 created 25-JUL-2012 21:27:44  
Amplitude and Phase vs Time for DA193.MULTI.1 CL # 3  
IF 5 CHAN 1 STK LL of DA193.ICL001.3



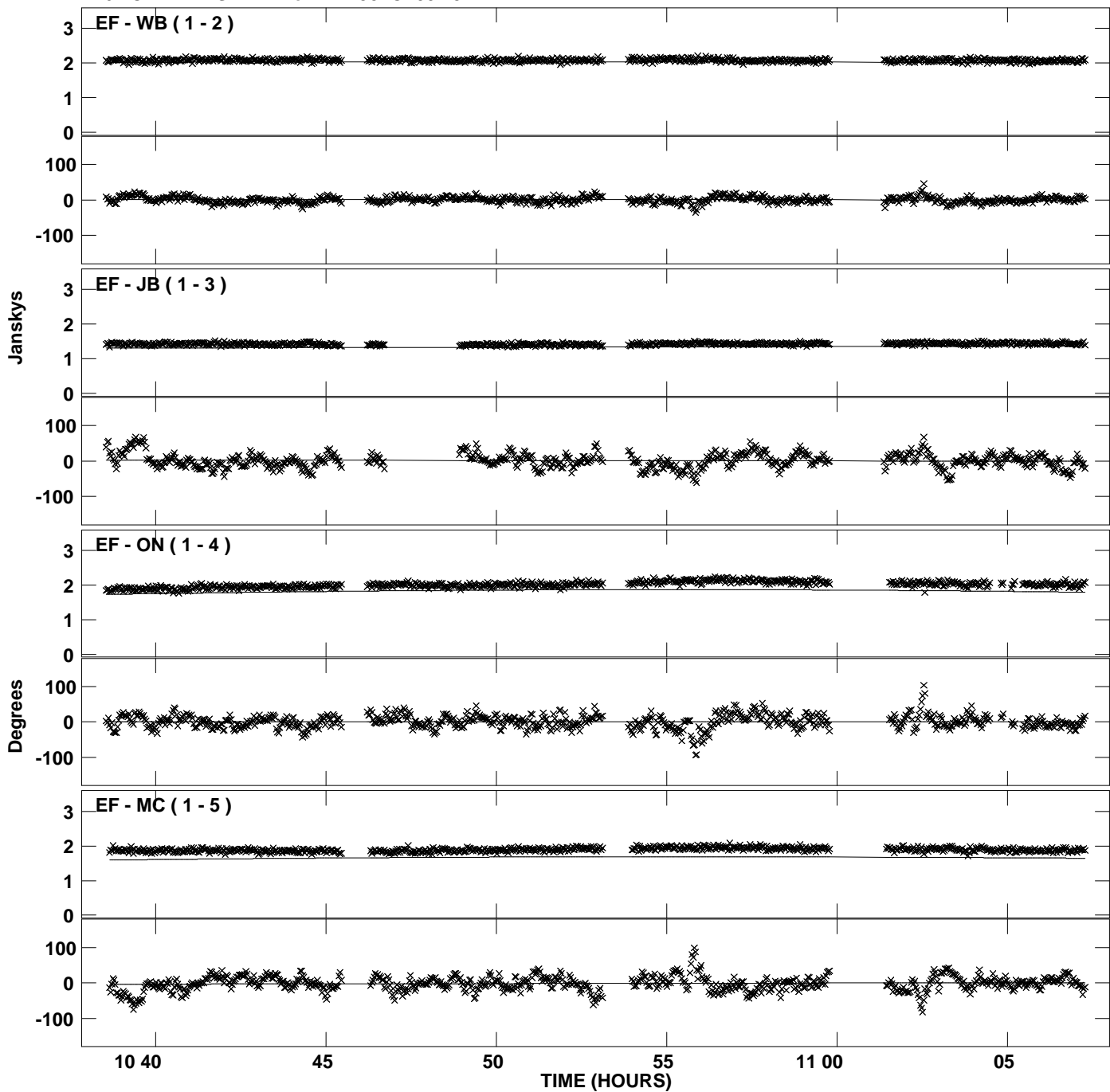
PLot file version 14 created 25-JUL-2012 21:27:44  
Amplitude andPhase vs Time for DA193.MULTI.1 CL # 3  
IF 5 CHAN 1 STK LL of DA193.ICL001.3



PLot file version 15 created 25-JUL-2012 21:27:44  
Amplitude andPhase vs Time for DA193.MULTI.1 CL # 3  
IF 5 CHAN 1 STK LL of DA193.ICL001.3

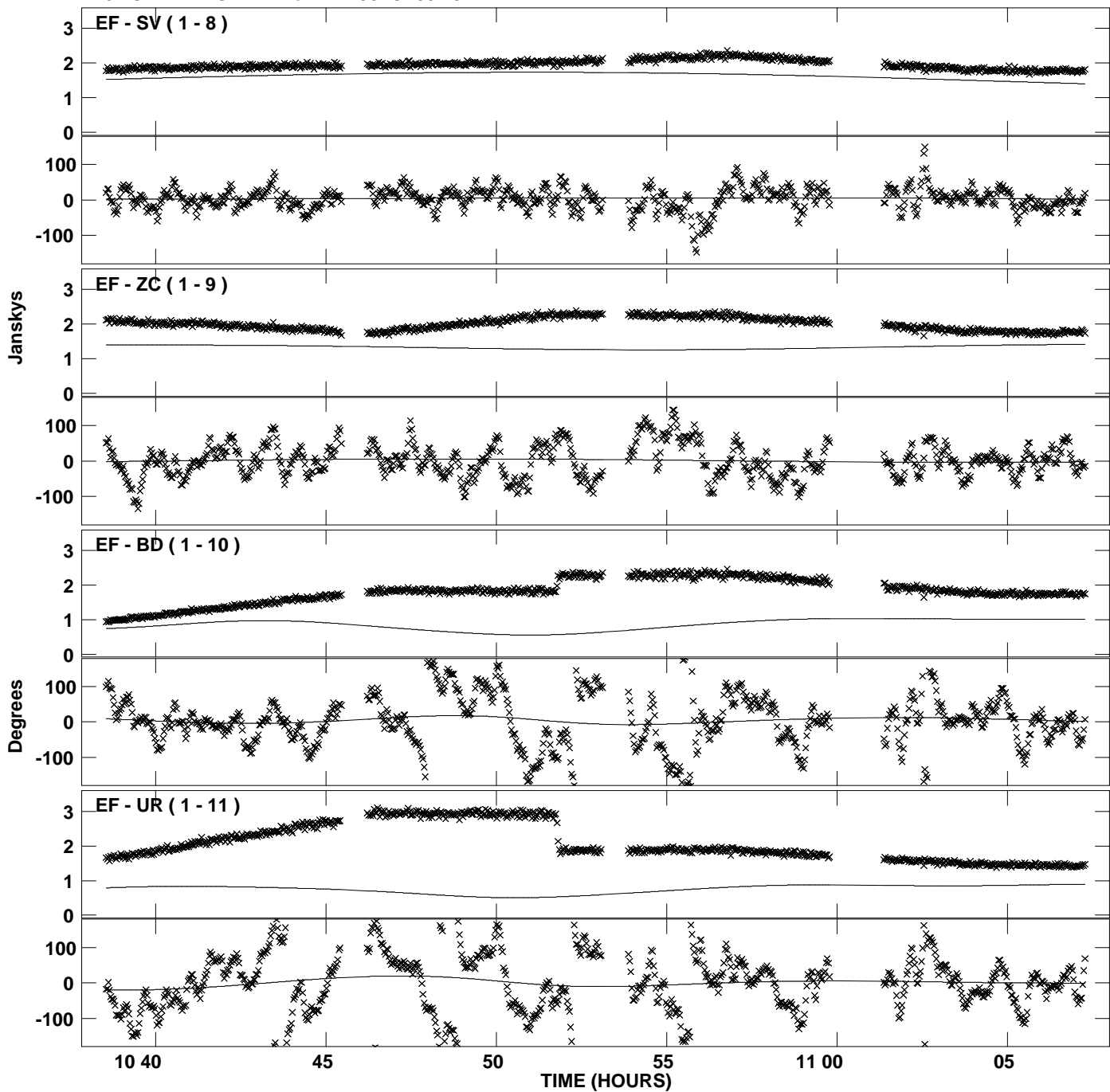


PLot file version 16 created 25-JUL-2012 21:27:45  
Amplitude andPhase vs Time for DA193.MULTI.1 CL # 3  
IF 6 CHAN 1 STK LL of DA193.ICL001.3

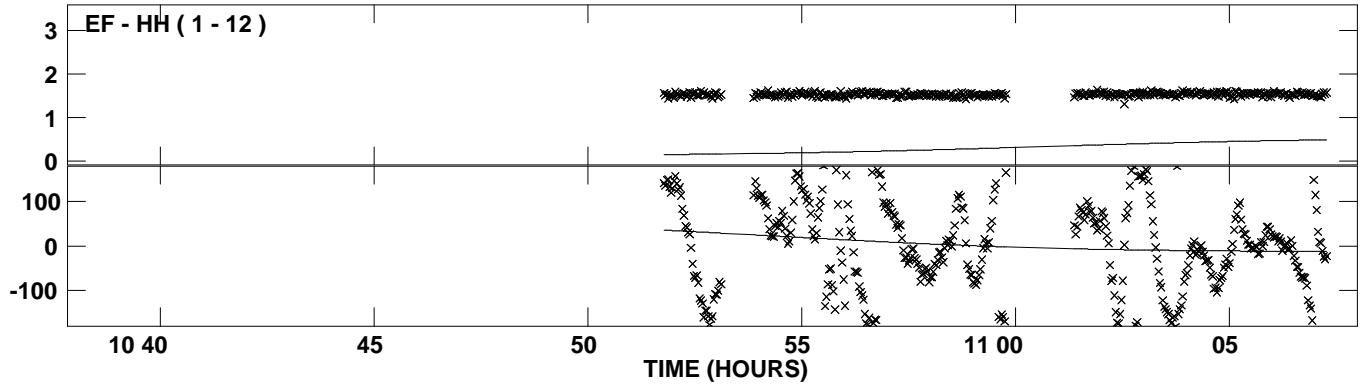




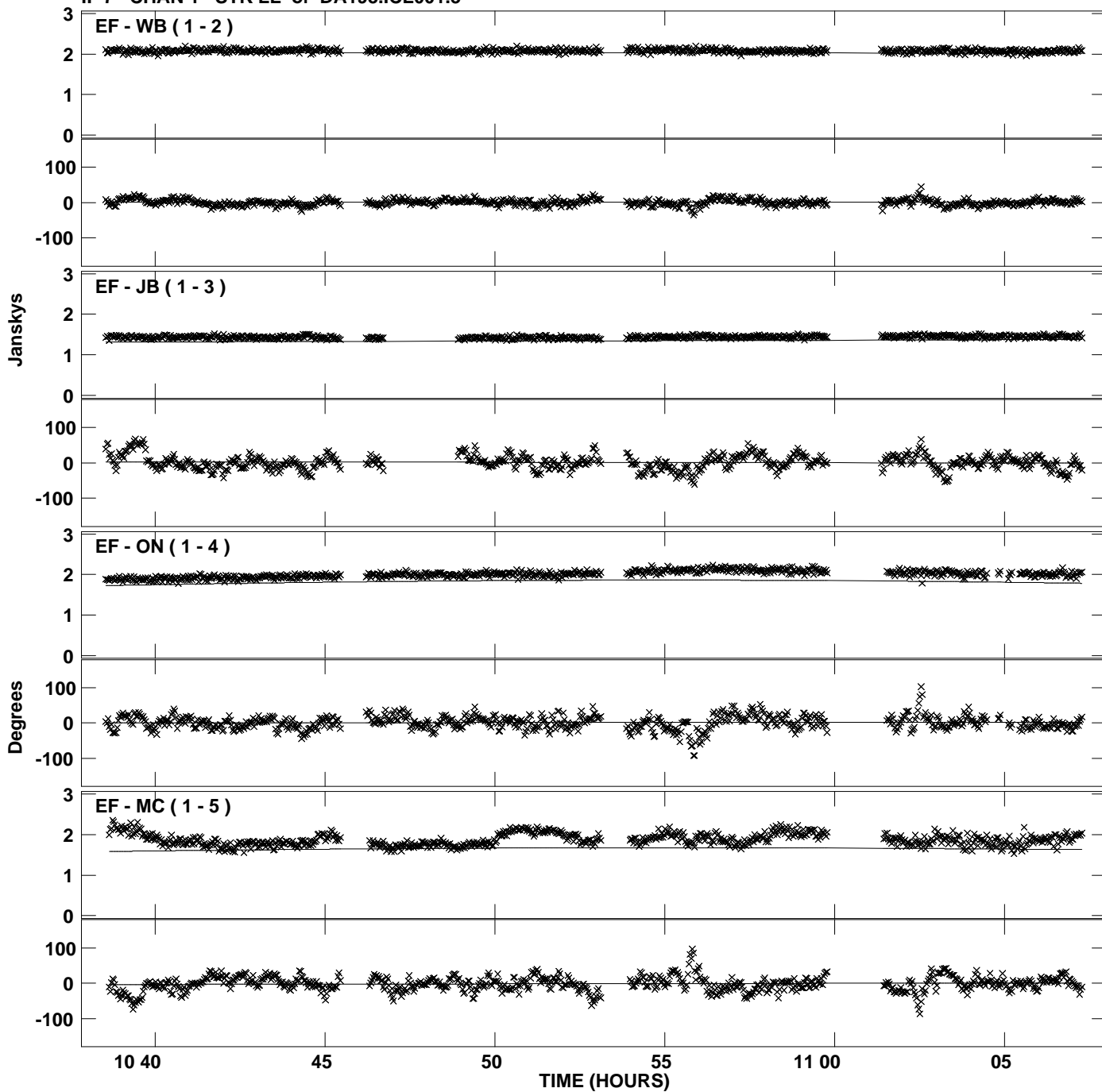
Plot file version 17 created 25-JUL-2012 21:27:45  
Amplitude and Phase vs Time for DA193.MULTI.1 CL # 3  
IF 6 CHAN 1 STK LL of DA193.ICL001.3



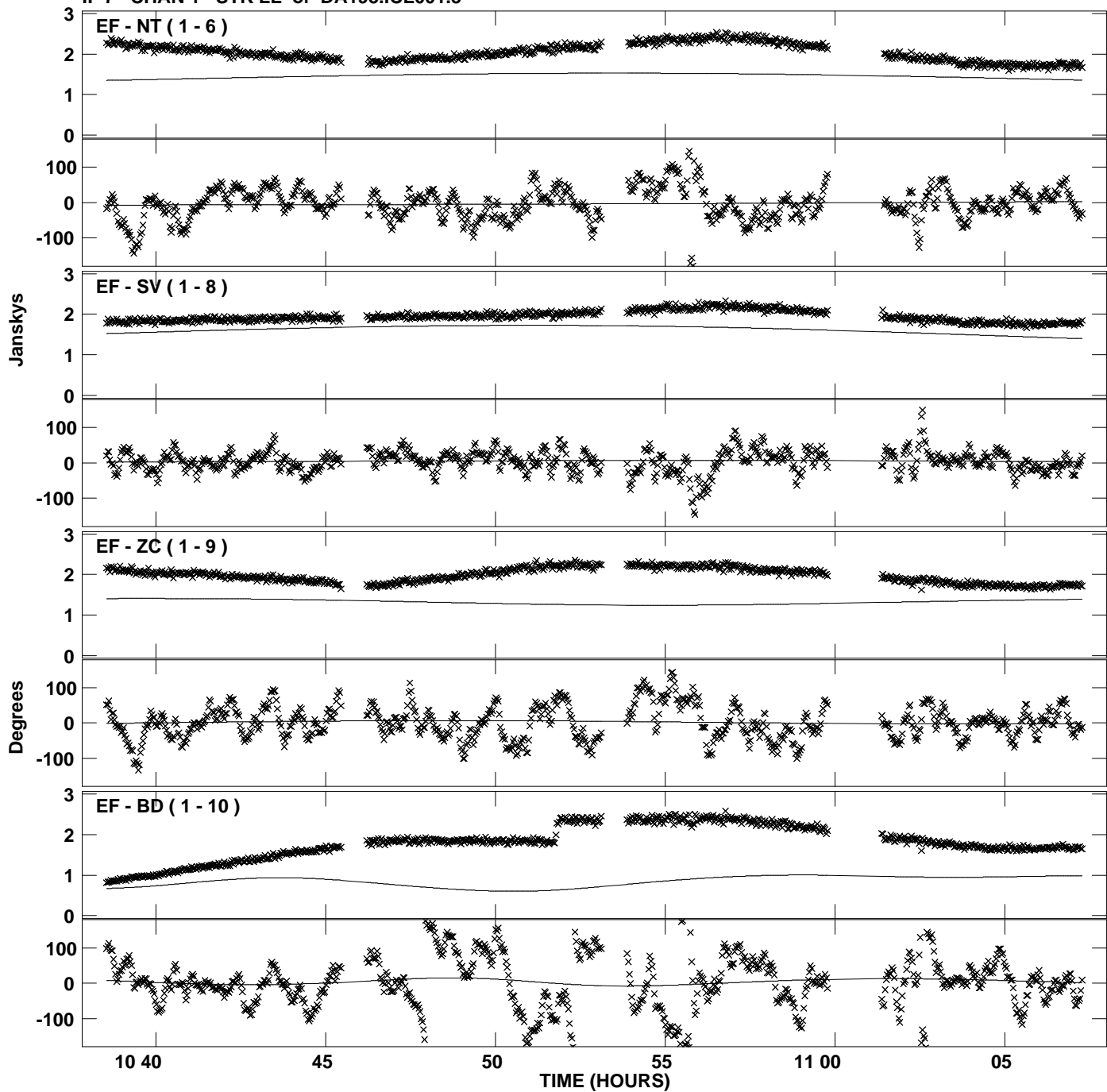
PLot file version 18 created 25-JUL-2012 21:27:45  
Amplitude andPhase vs Time for DA193.MULTI.1 CL # 3  
IF 6 CHAN 1 STK LL of DA193.ICL001.3



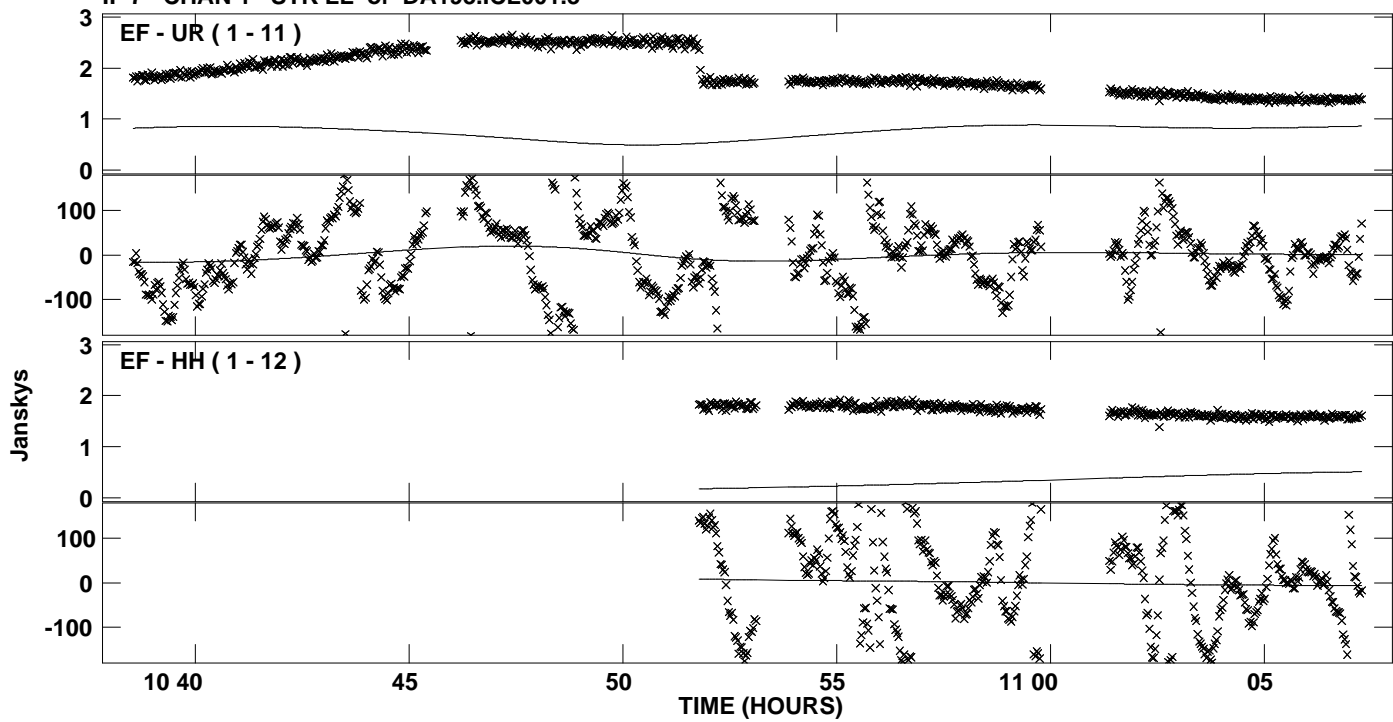
PLot file version 19 created 25-JUL-2012 21:27:45  
Amplitude andPhase vs Time for DA193.MULTI.1 CL # 3  
IF 7 CHAN 1 STK LL of DA193.ICL001.3



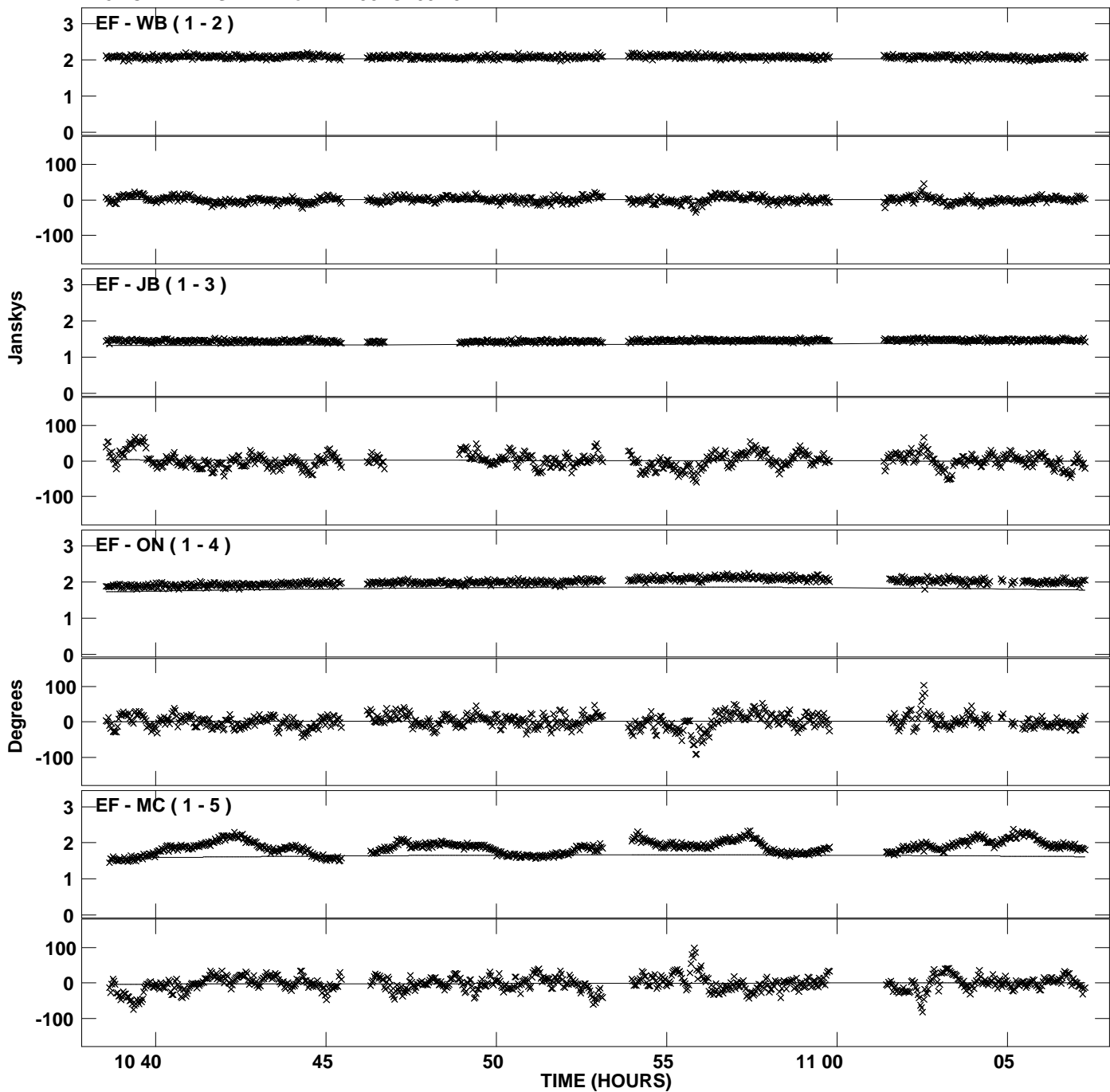
Plot file version 20 created 25-JUL-2012 21:27:45  
Amplitude and Phase vs Time for DA193.MULTI.1 CL # 3  
IF 7 CHAN 1 STK LL of DA193.ICL001.3



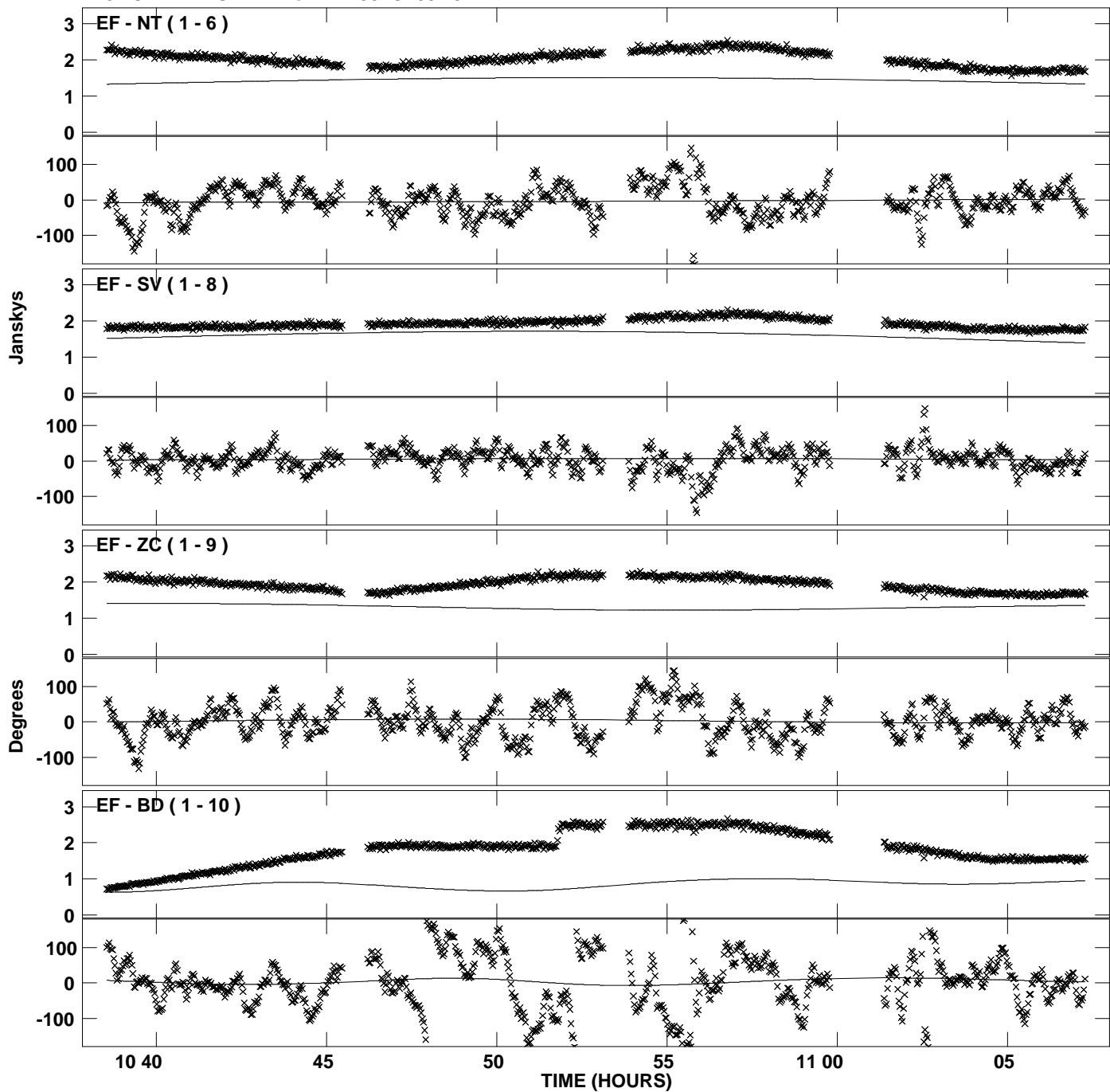
PLot file version 21 created 25-JUL-2012 21:27:45  
Amplitude andPhase vs Time for DA193.MULTI.1 CL # 3  
IF 7 CHAN 1 STK LL of DA193.ICL001.3



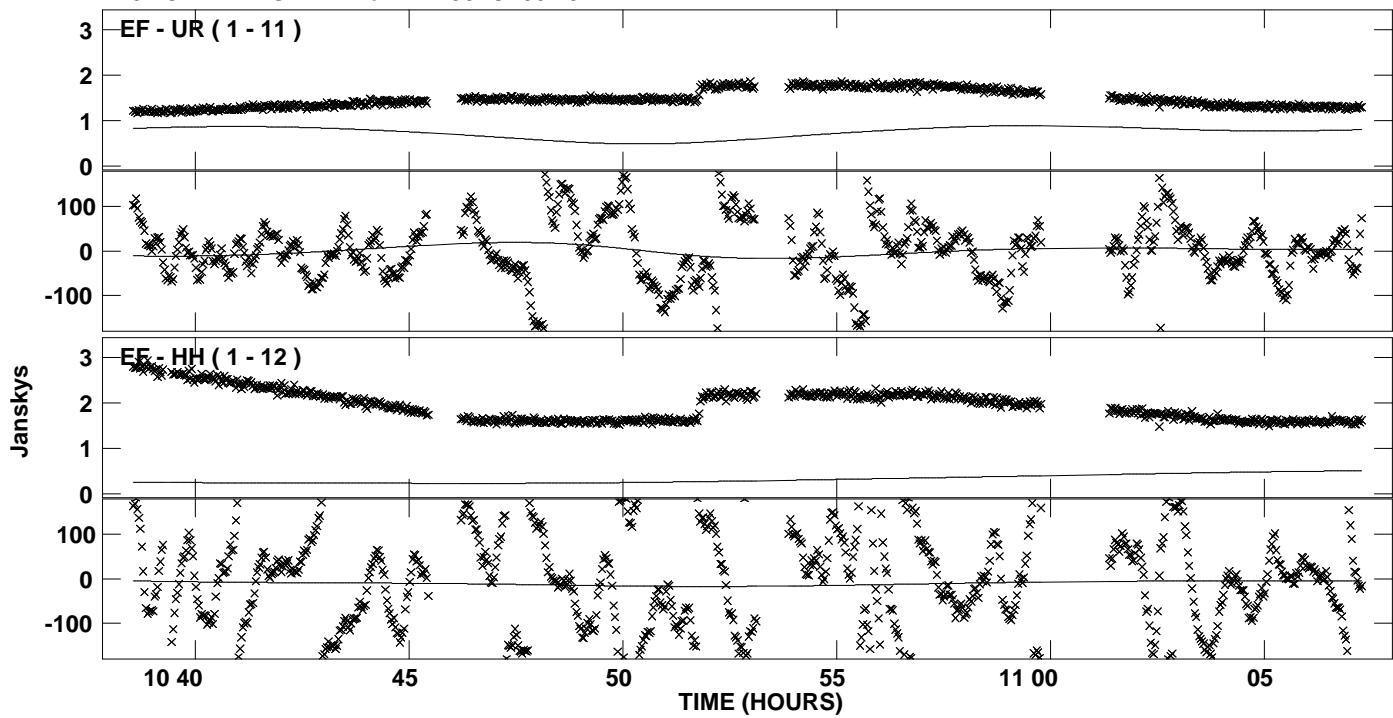
Plot file version 22 created 25-JUL-2012 21:27:45  
Amplitude and Phase vs Time for DA193.MULTI.1 CL # 3  
IF 8 CHAN 1 STK LL of DA193.ICL001.3



Plot file version 23 created 25-JUL-2012 21:27:45  
Amplitude and Phase vs Time for DA193.MULTI.1 CL # 3  
IF 8 CHAN 1 STK LL of DA193.ICL001.3

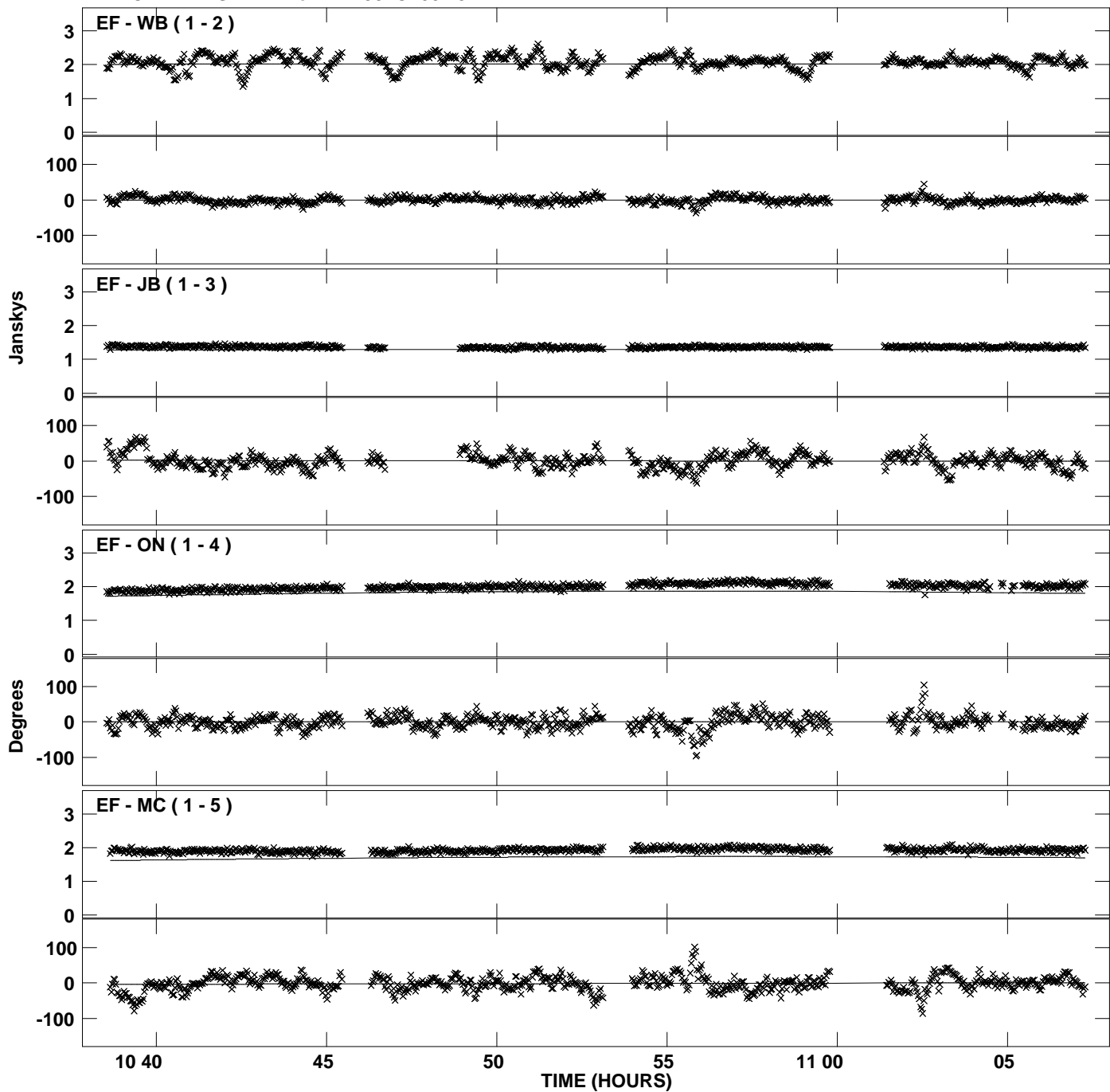


Plot file version 24 created 25-JUL-2012 21:27:45  
Amplitude and Phase vs Time for DA193.MULTI.1 CL # 3  
IF 8 CHAN 1 STK LL of DA193.ICL001.3

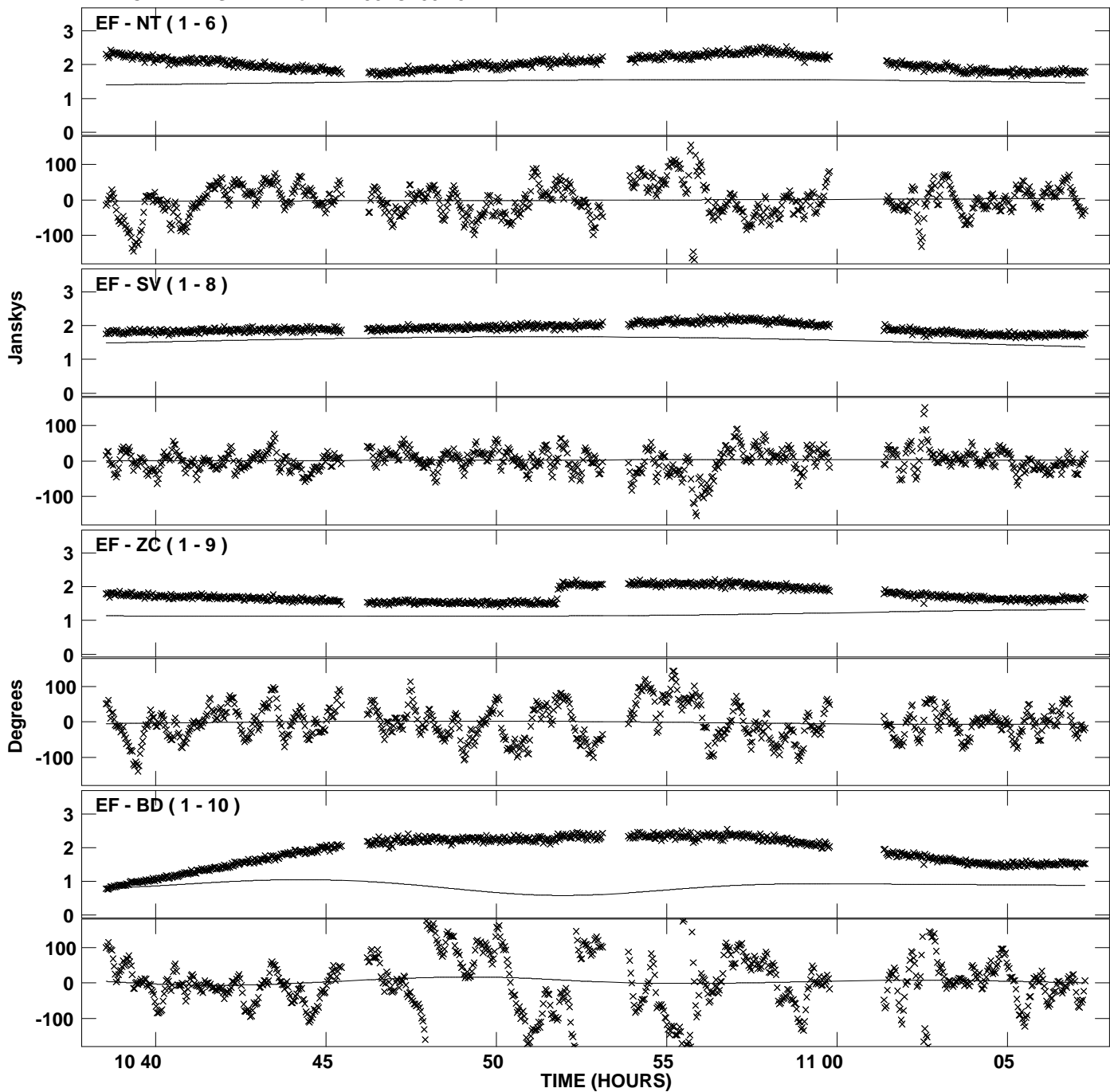




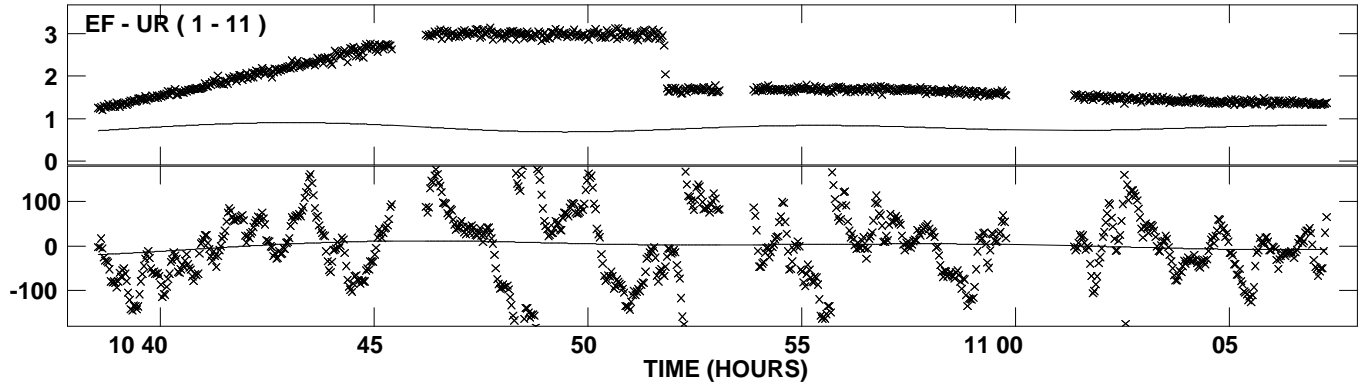
Plot file version 25 created 25-JUL-2012 21:27:45  
Amplitude andPhase vs Time for DA193.MULTI.1 CL # 3  
IF 1 CHAN 1 STK RR of DA193.ICL001.3



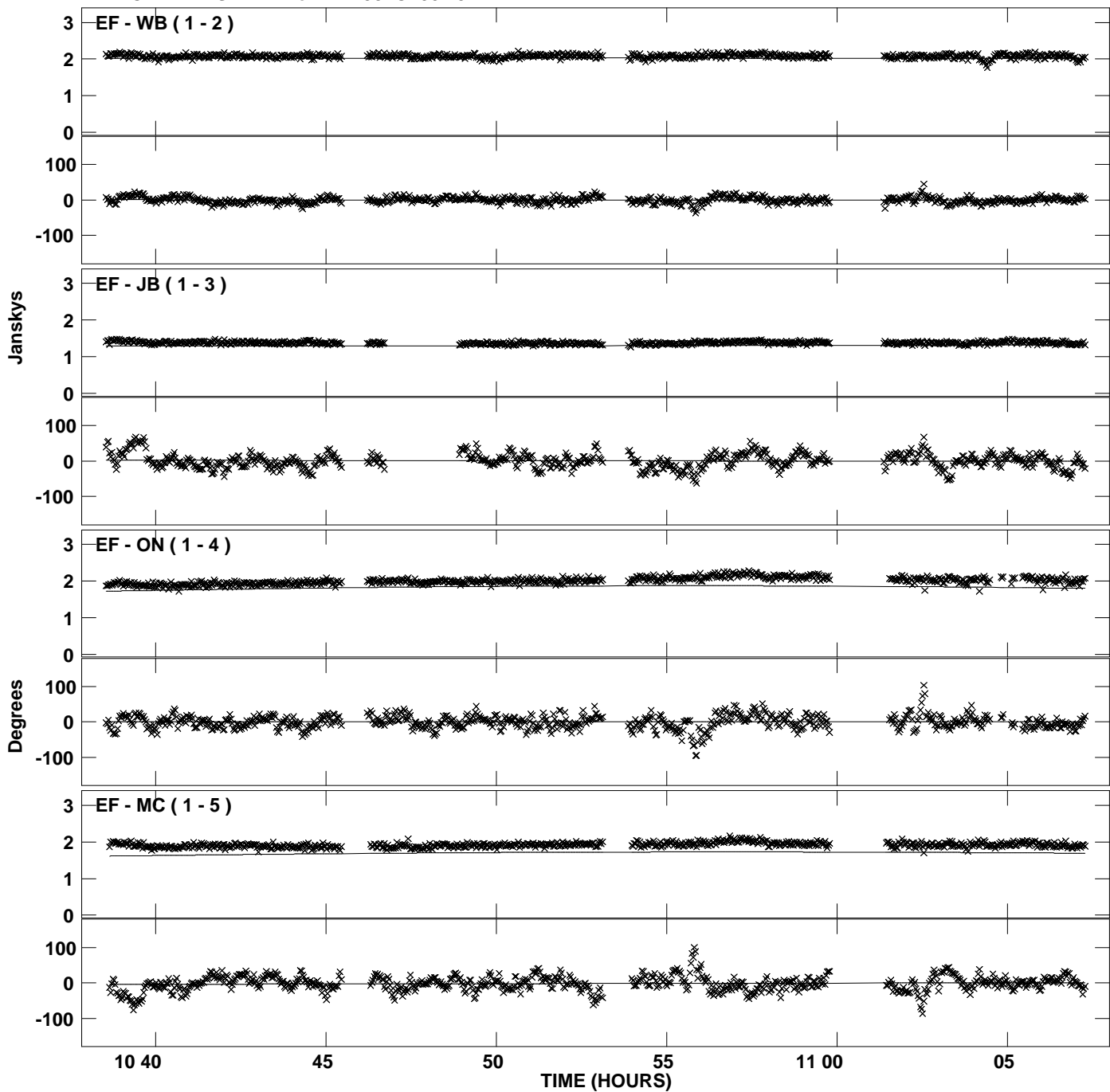
Plot file version 26 created 25-JUL-2012 21:27:45  
Amplitude and Phase vs Time for DA193.MULTI.1 CL # 3  
IF 1 CHAN 1 STK RR of DA193.ICL001.3



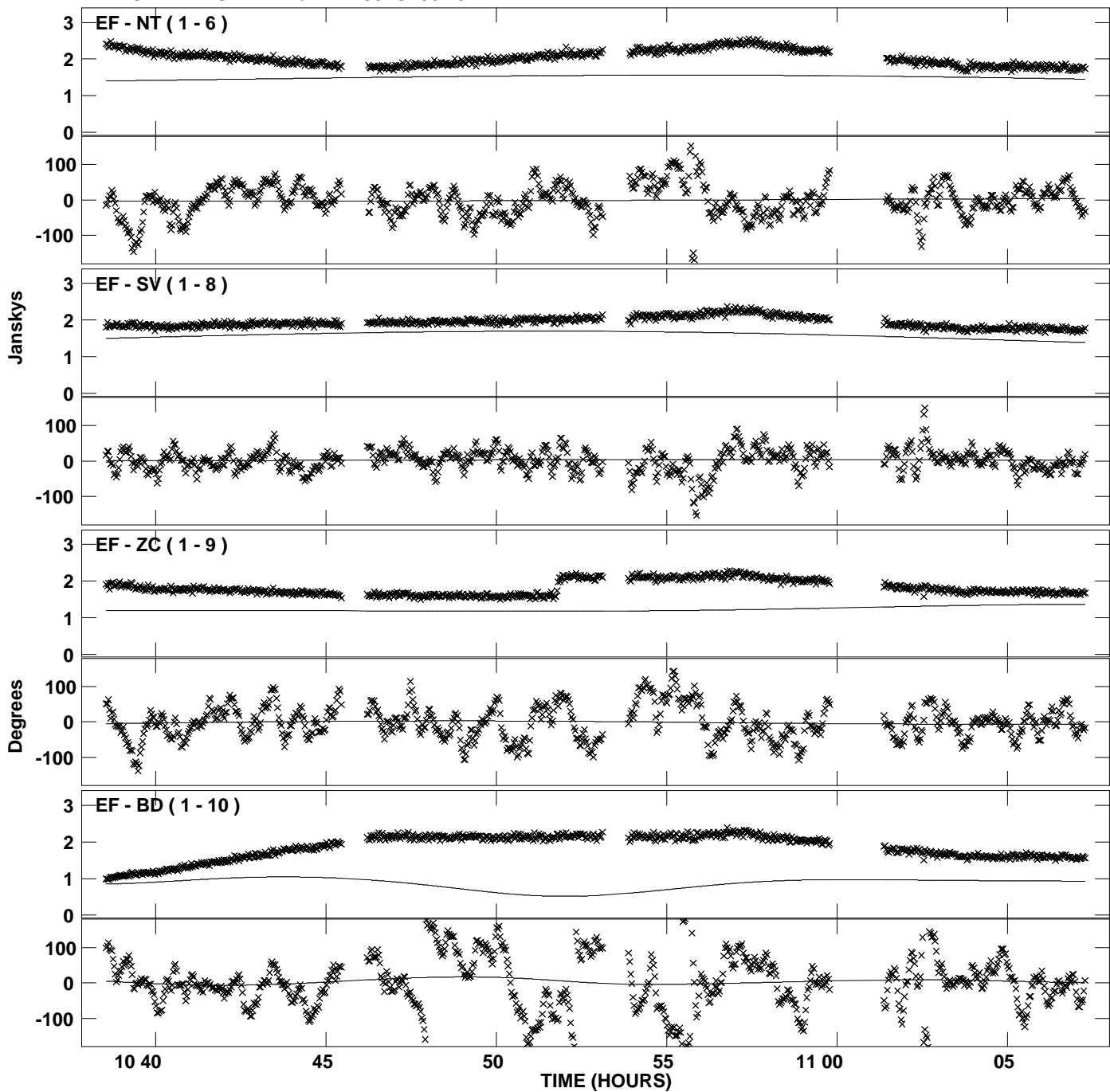
Plot file version 27 created 25-JUL-2012 21:27:45  
Amplitude and Phase vs Time for DA193.MULTI.1 CL # 3  
IF 1 CHAN 1 STK RR of DA193.ICL001.3



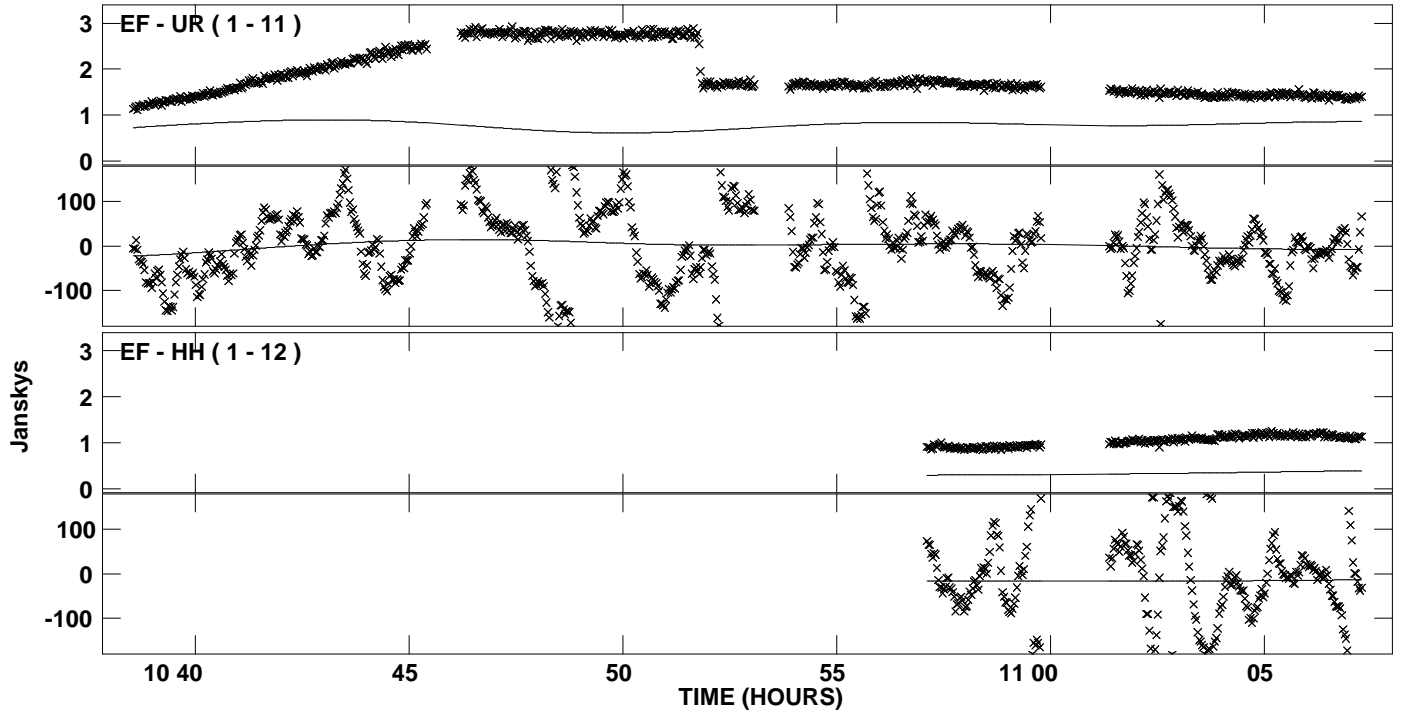
Plot file version 28 created 25-JUL-2012 21:27:45  
Amplitude andPhase vs Time for DA193.MULTI.1 CL # 3  
IF 2 CHAN 1 STK RR of DA193.ICL001.3



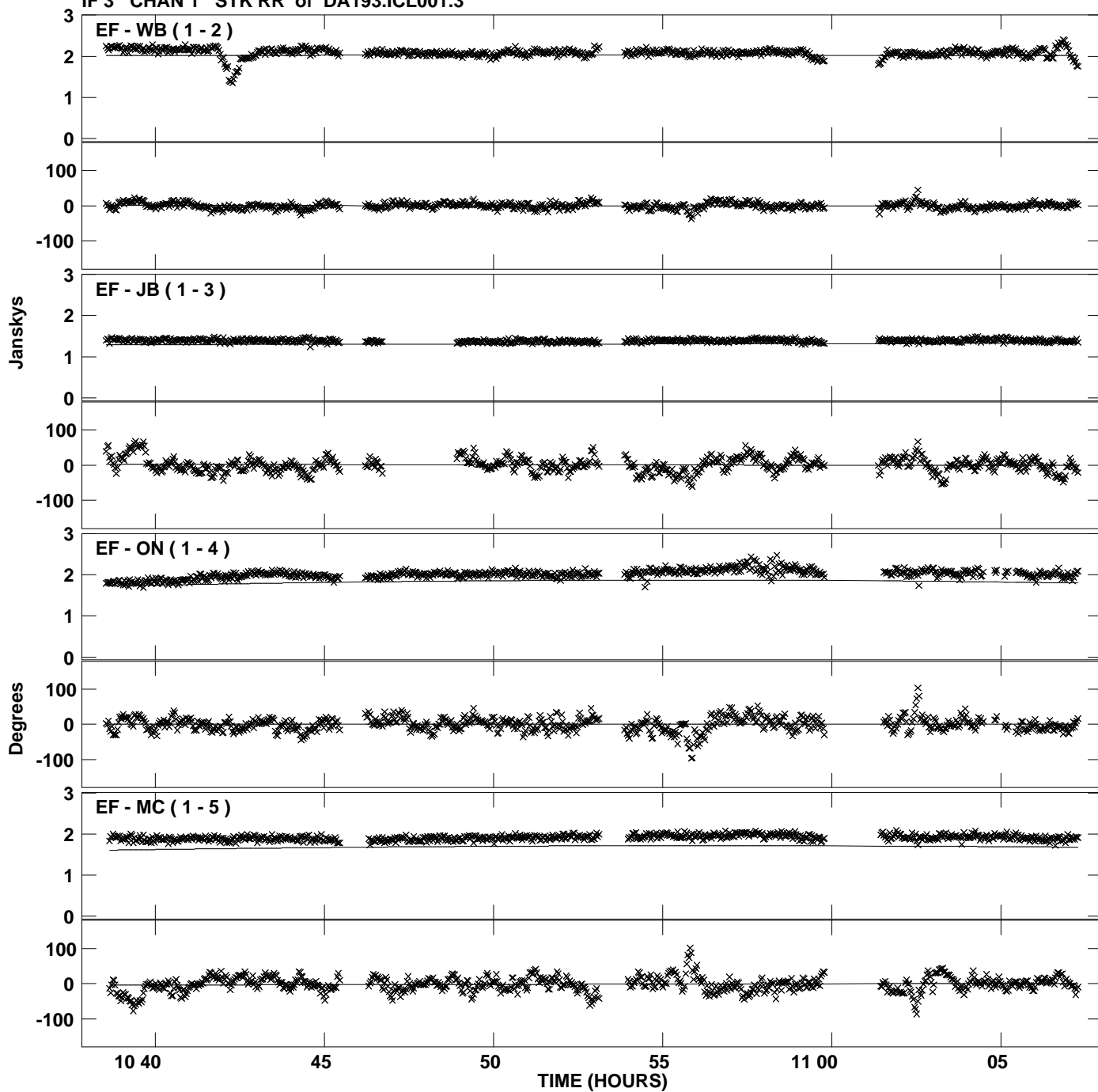
Plot file version 29 created 25-JUL-2012 21:27:45  
Amplitude andPhase vs Time for DA193.MULTI.1 CL # 3  
IF 2 CHAN 1 STK RR of DA193.ICL001.3



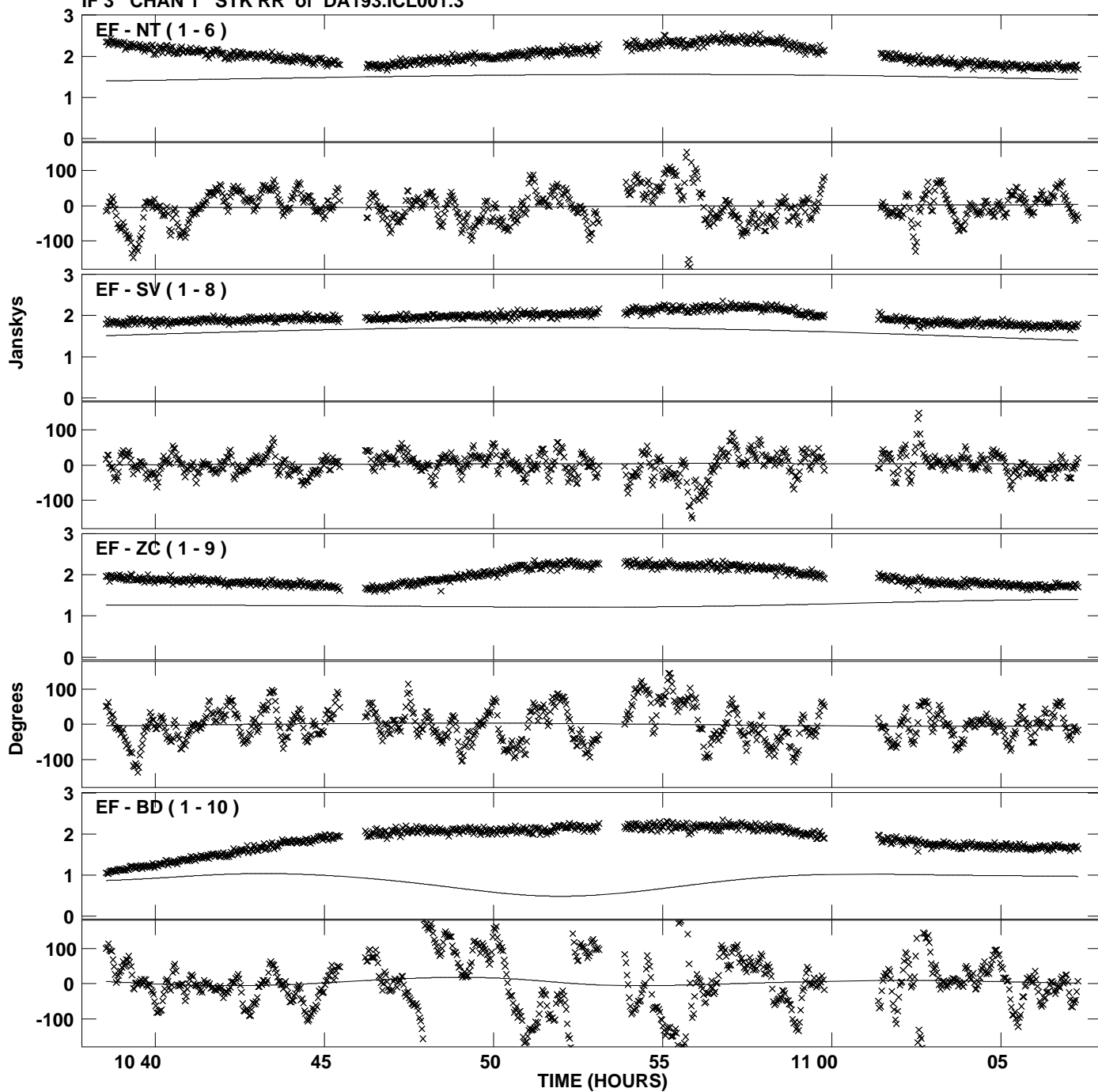
PLot file version 30 created 25-JUL-2012 21:27:45  
Amplitude andPhase vs Time for DA193.MULTI.1 CL # 3  
IF 2 CHAN 1 STK RR of DA193.ICL001.3



Plot file version 31 created 25-JUL-2012 21:27:45  
Amplitude andPhase vs Time for DA193.MULTI.1 CL # 3  
IF 3 CHAN 1 STK RR of DA193.ICL001.3

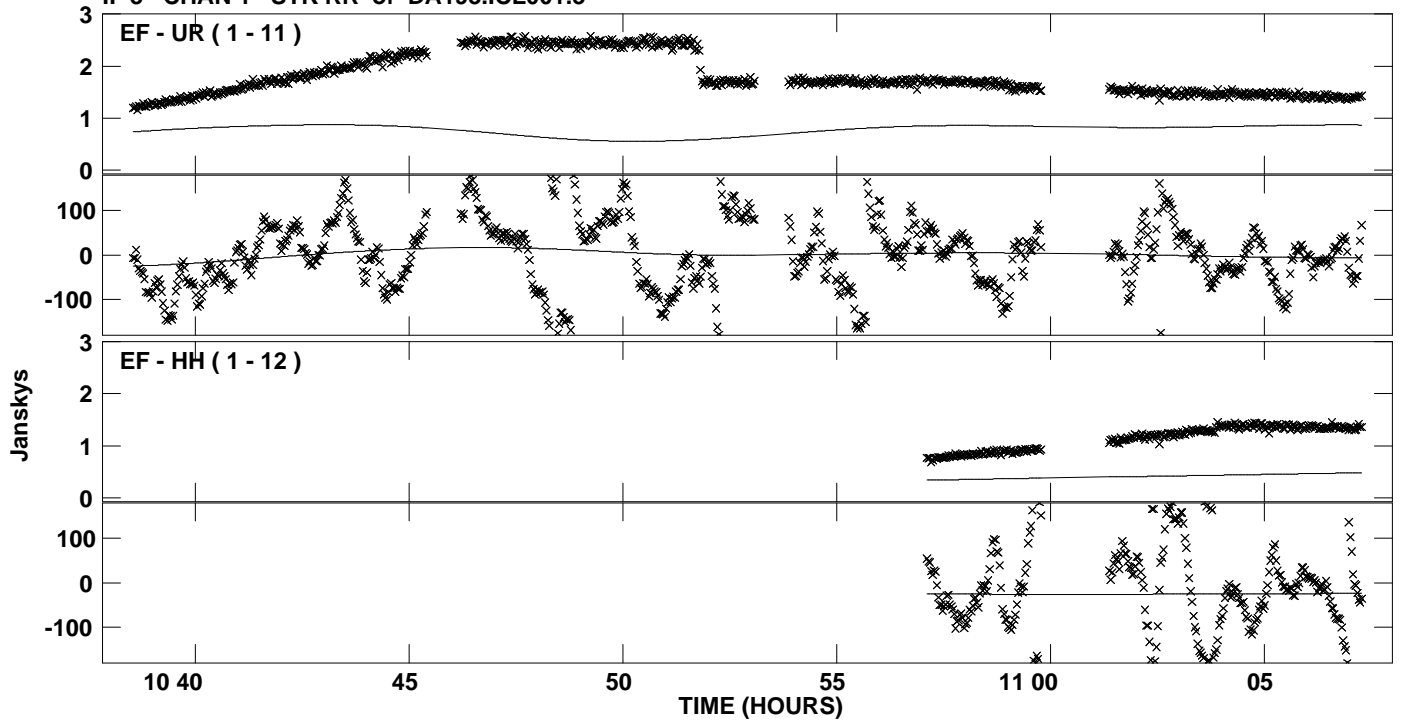


Plot file version 32 created 25-JUL-2012 21:27:45  
Amplitude and Phase vs Time for DA193.MULTI.1 CL # 3  
IF 3 CHAN 1 STK RR of DA193.ICL001.3

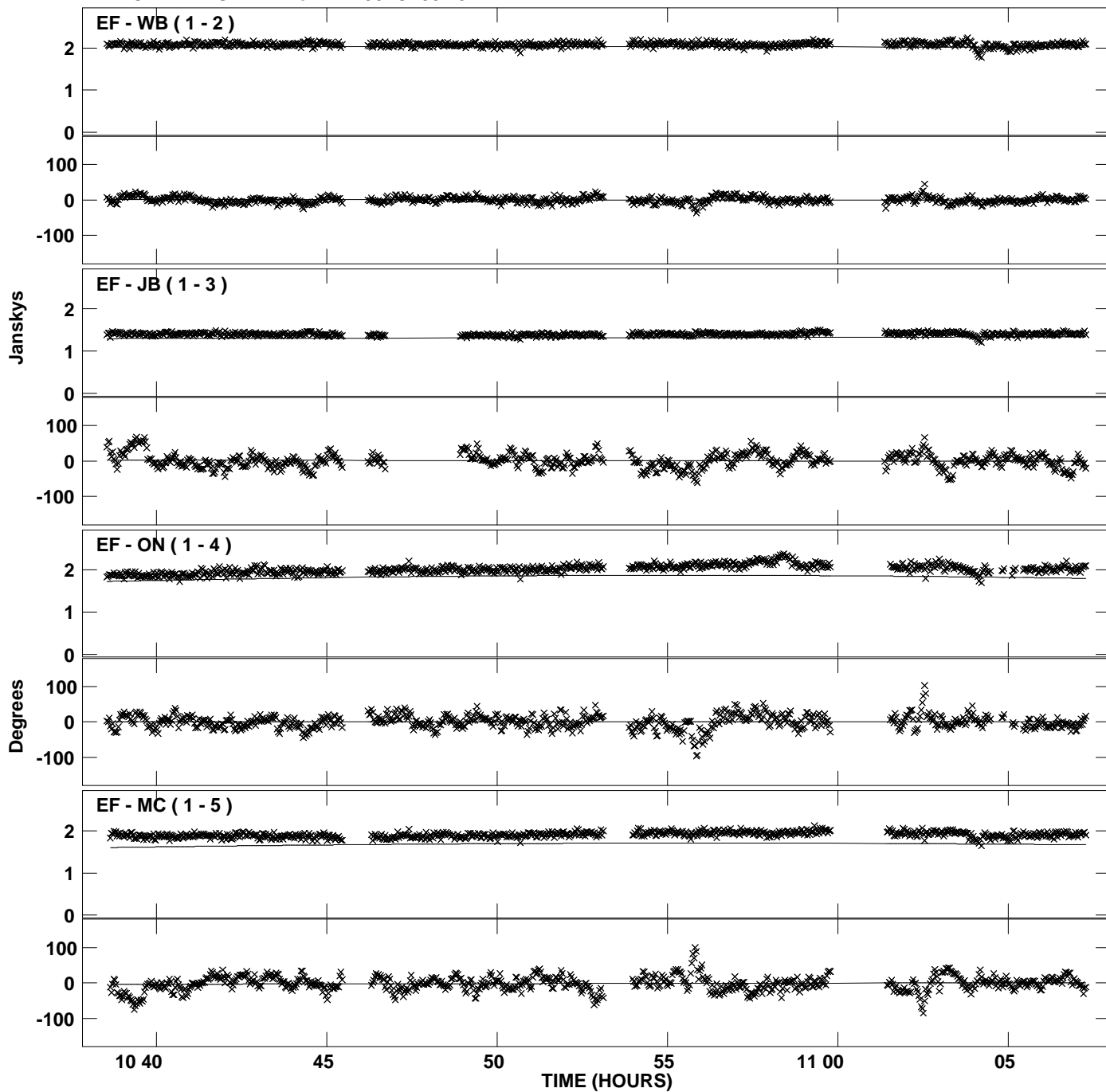




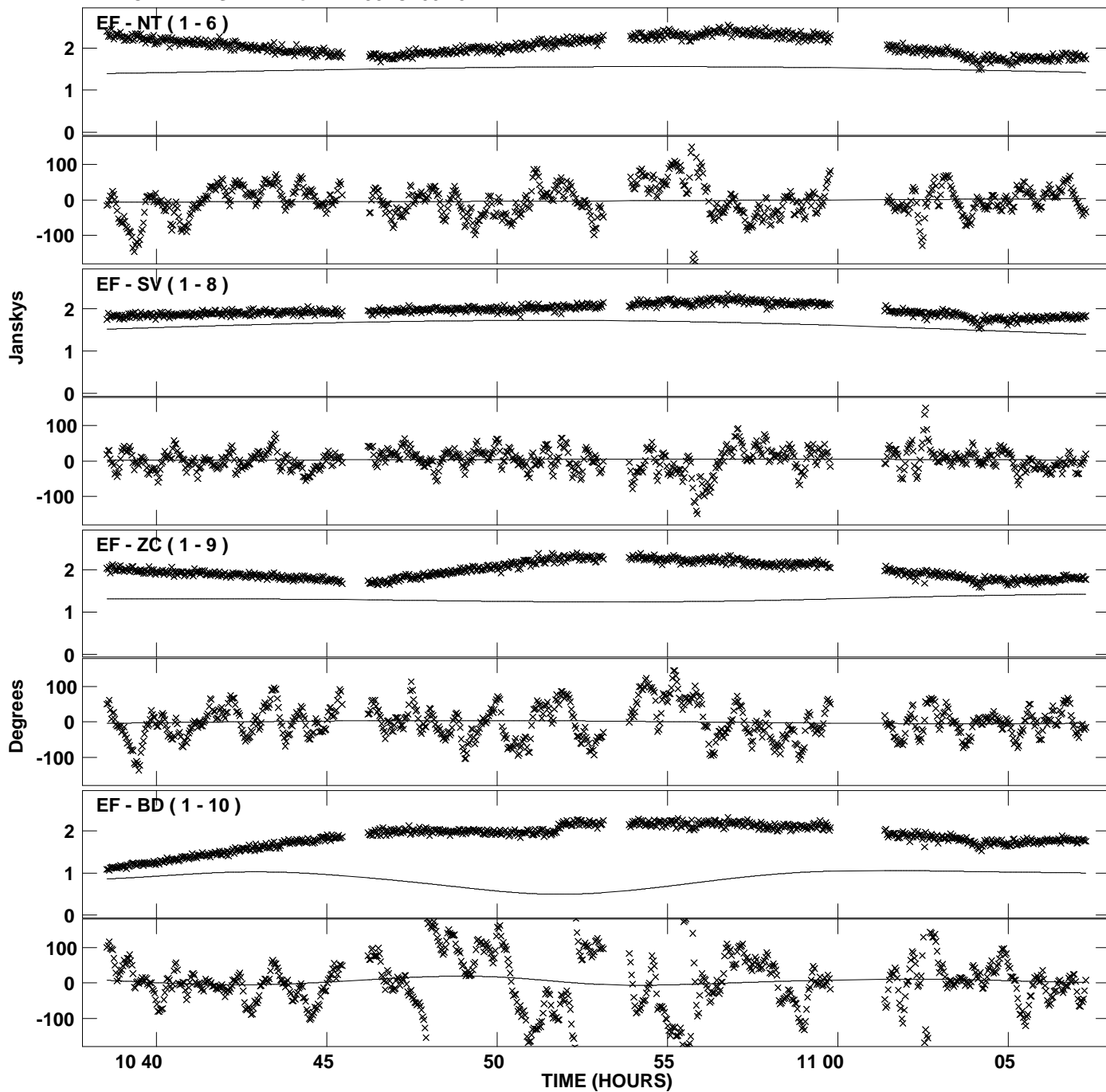
PLot file version 33 created 25-JUL-2012 21:27:45  
Amplitude andPhase vs Time for DA193.MULTI.1 CL # 3  
IF 3 CHAN 1 STK RR of DA193.ICL001.3



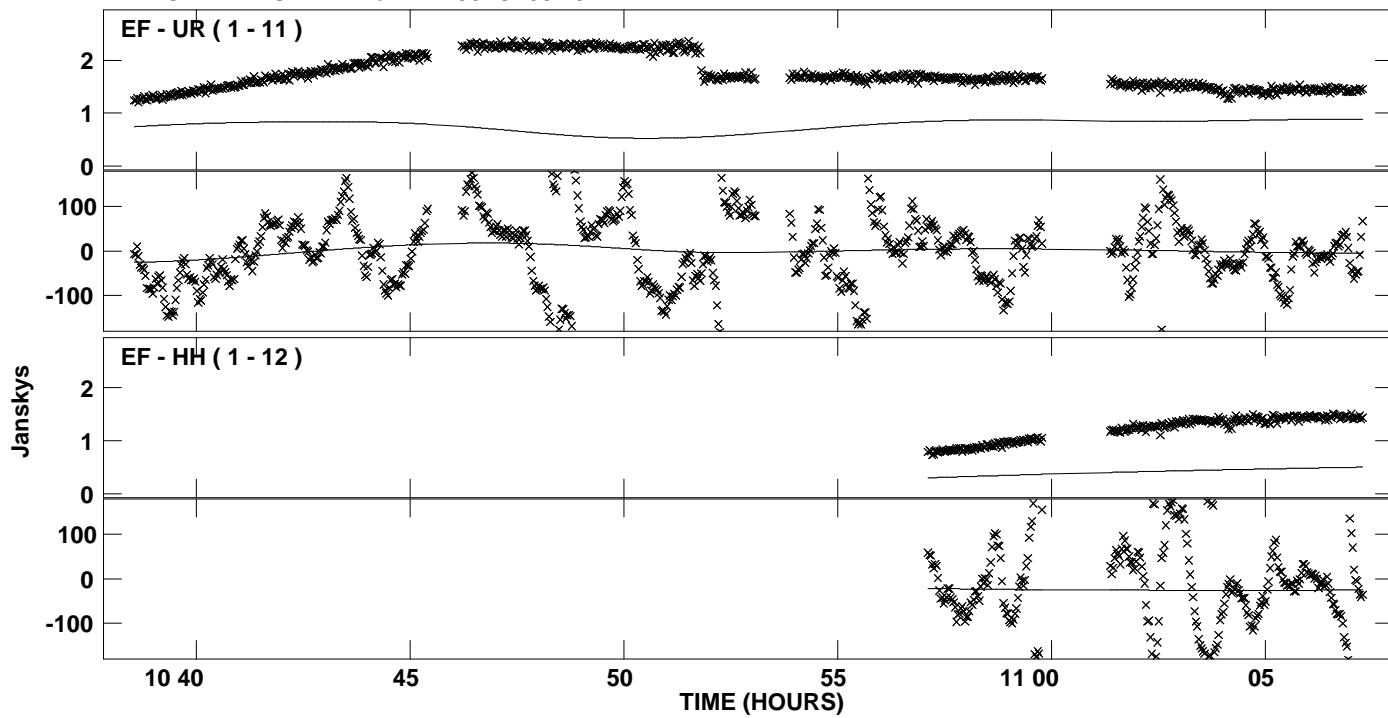
PLot file version 34 created 25-JUL-2012 21:27:45  
Amplitude andPhase vs Time for DA193.MULTI.1 CL # 3  
IF 4 CHAN 1 STK RR of DA193.ICL001.3



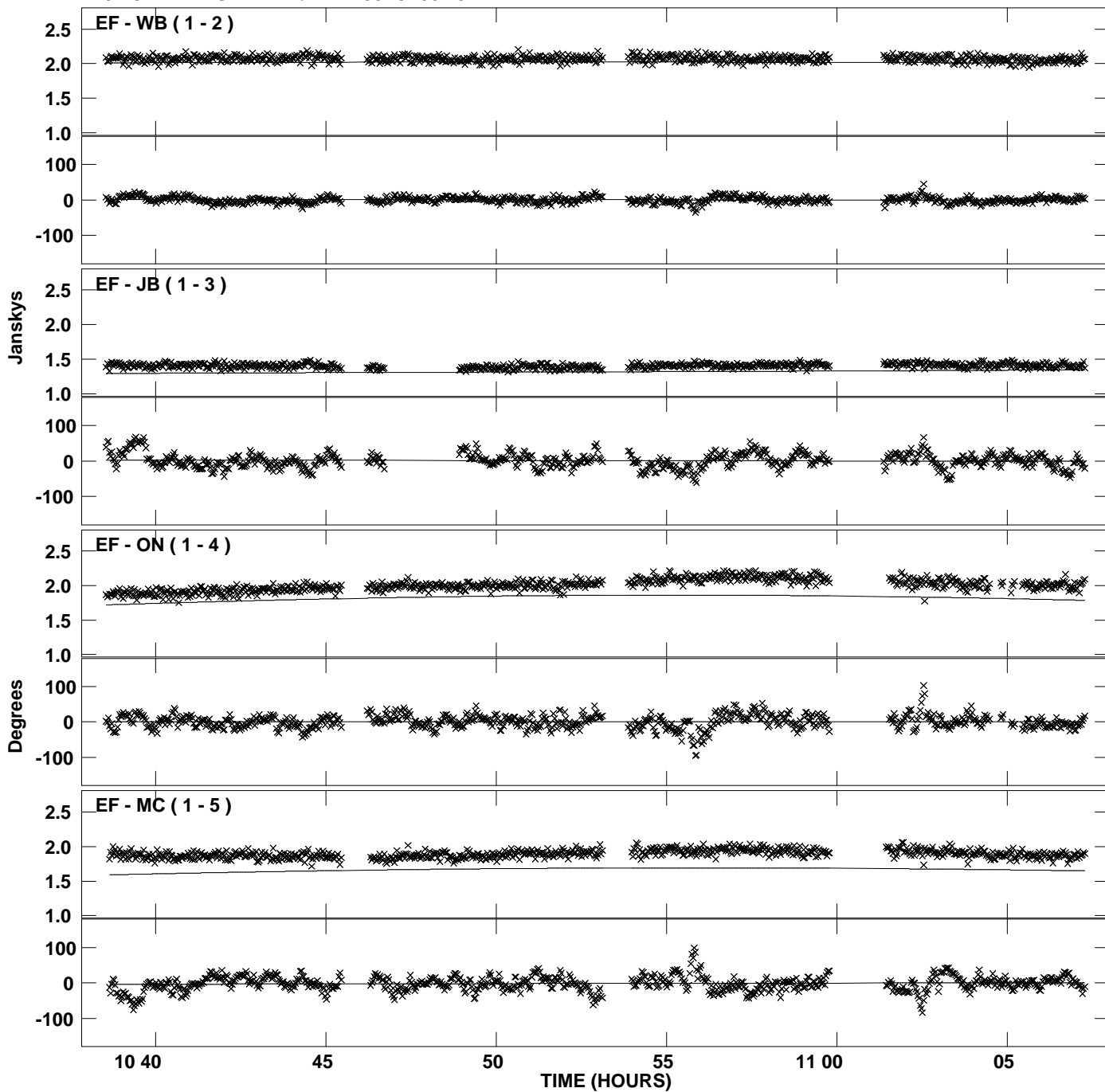
PLot file version 35 created 25-JUL-2012 21:27:45  
Amplitude andPhase vs Time for DA193.MULTI.1 CL # 3  
IF 4 CHAN 1 STK RR of DA193.ICL001.3



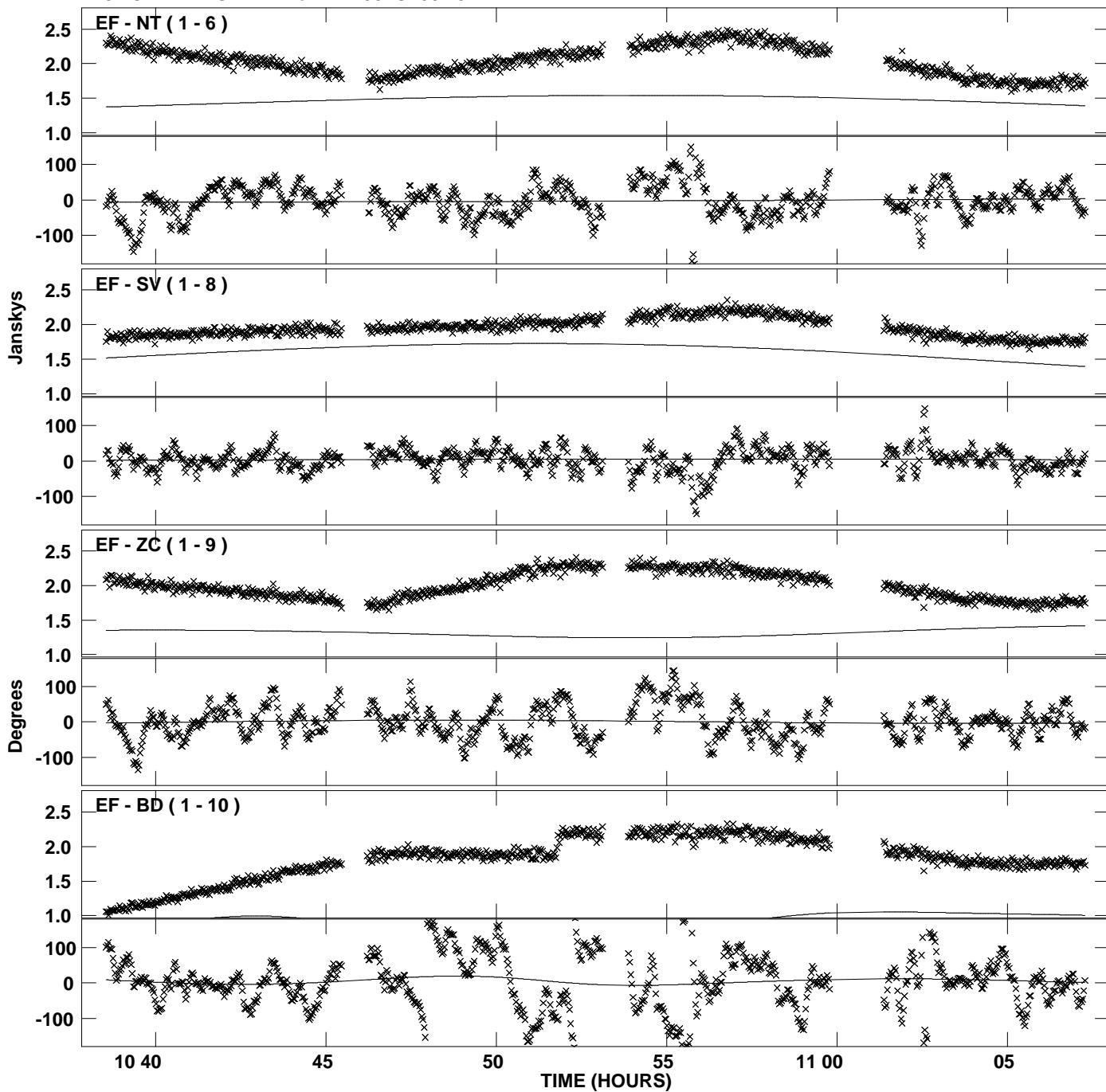
PLot file version 36 created 25-JUL-2012 21:27:45  
Amplitude andPhase vs Time for DA193.MULTI.1 CL # 3  
IF 4 CHAN 1 STK RR of DA193.ICL001.3



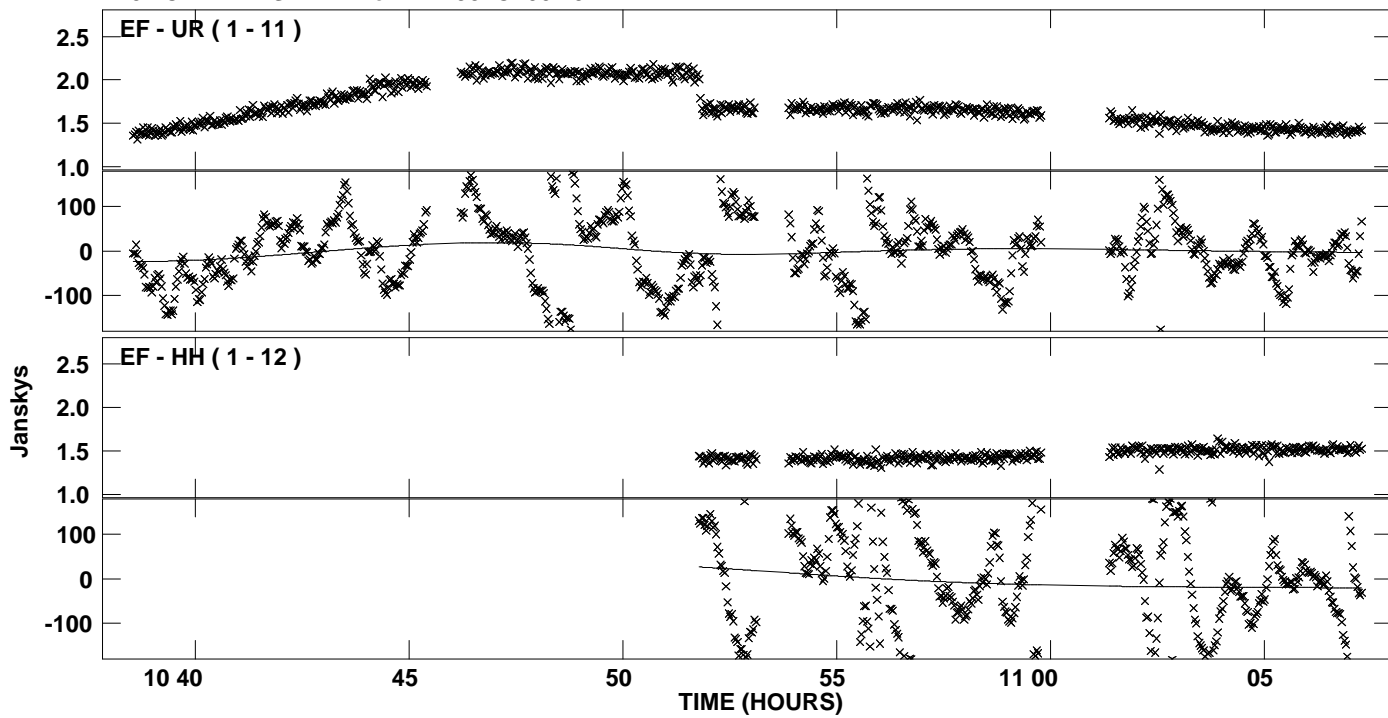
PLot file version 37 created 25-JUL-2012 21:27:45  
Amplitude andPhase vs Time for DA193.MULTI.1 CL # 3  
IF 5 CHAN 1 STK RR of DA193.ICL001.3



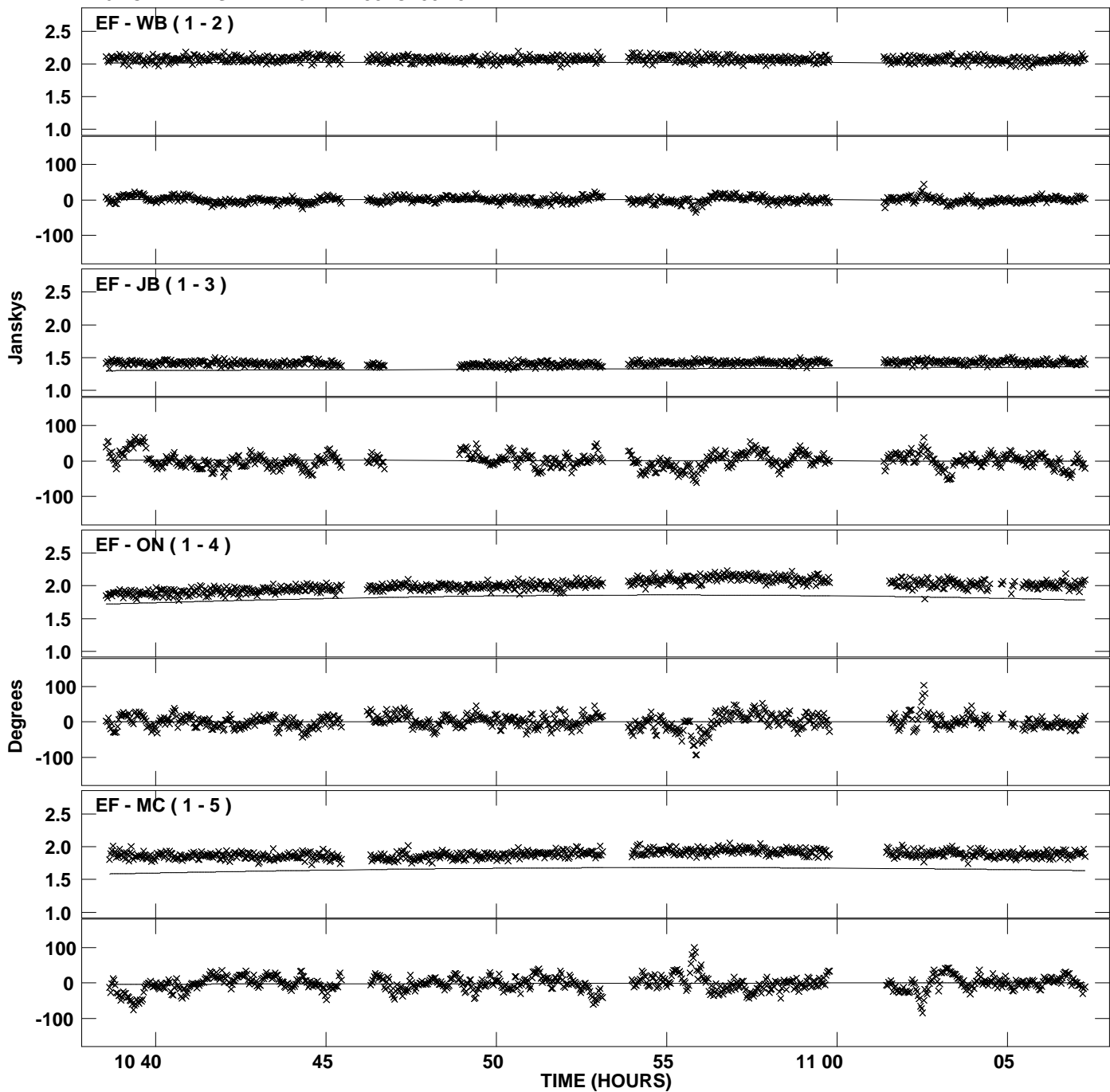
Plot file version 38 created 25-JUL-2012 21:27:45  
Amplitude andPhase vs Time for DA193.MULTI.1 CL # 3  
IF 5 CHAN 1 STK RR of DA193.ICL001.3



PLot file version 39 created 25-JUL-2012 21:27:45  
Amplitude andPhase vs Time for DA193.MULTI.1 CL # 3  
IF 5 CHAN 1 STK RR of DA193.ICL001.3

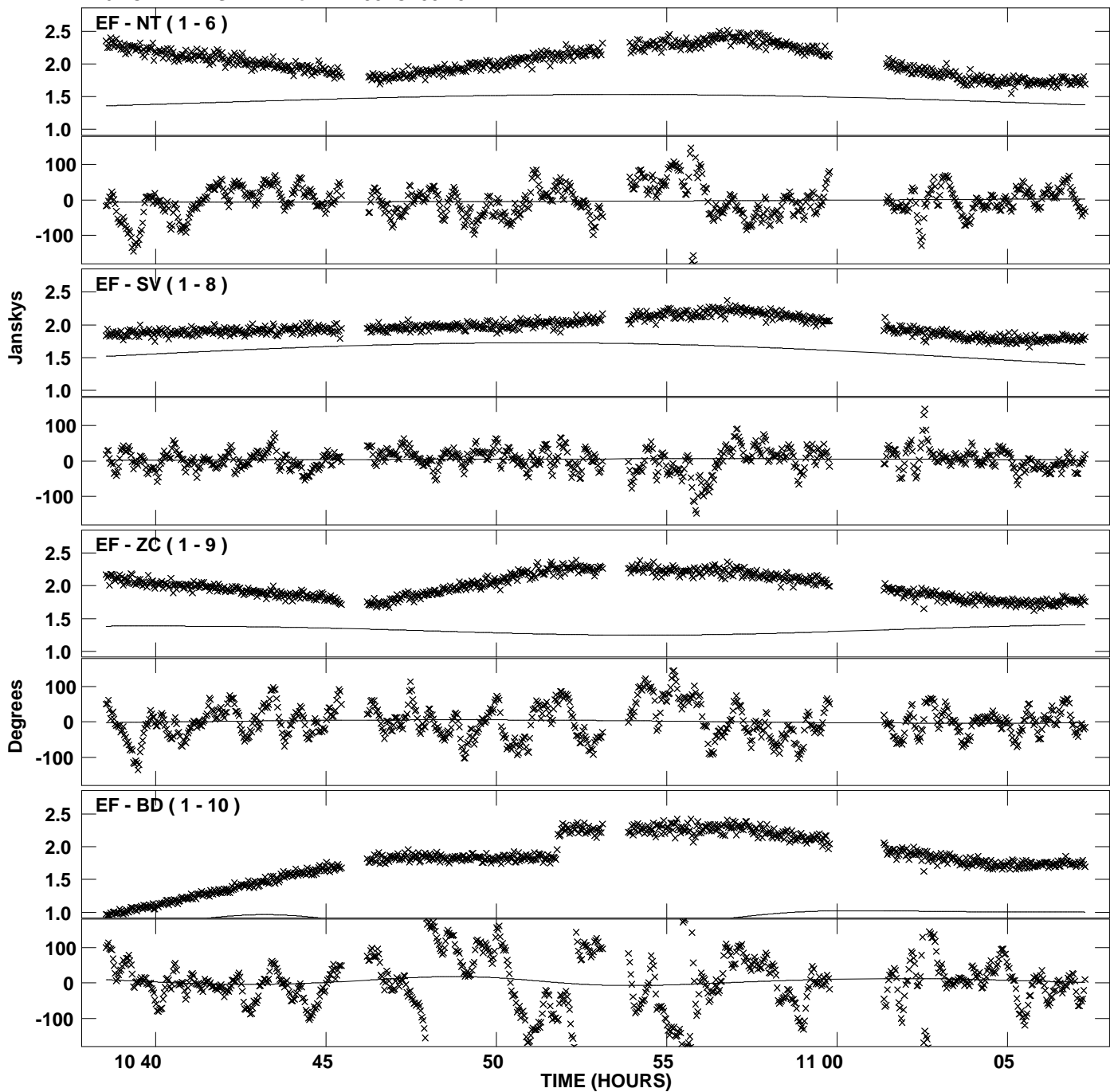


Plot file version 40 created 25-JUL-2012 21:27:46  
Amplitude and Phase vs Time for DA193.MULTI.1 CL # 3  
IF 6 CHAN 1 STK RR of DA193.ICL001.3

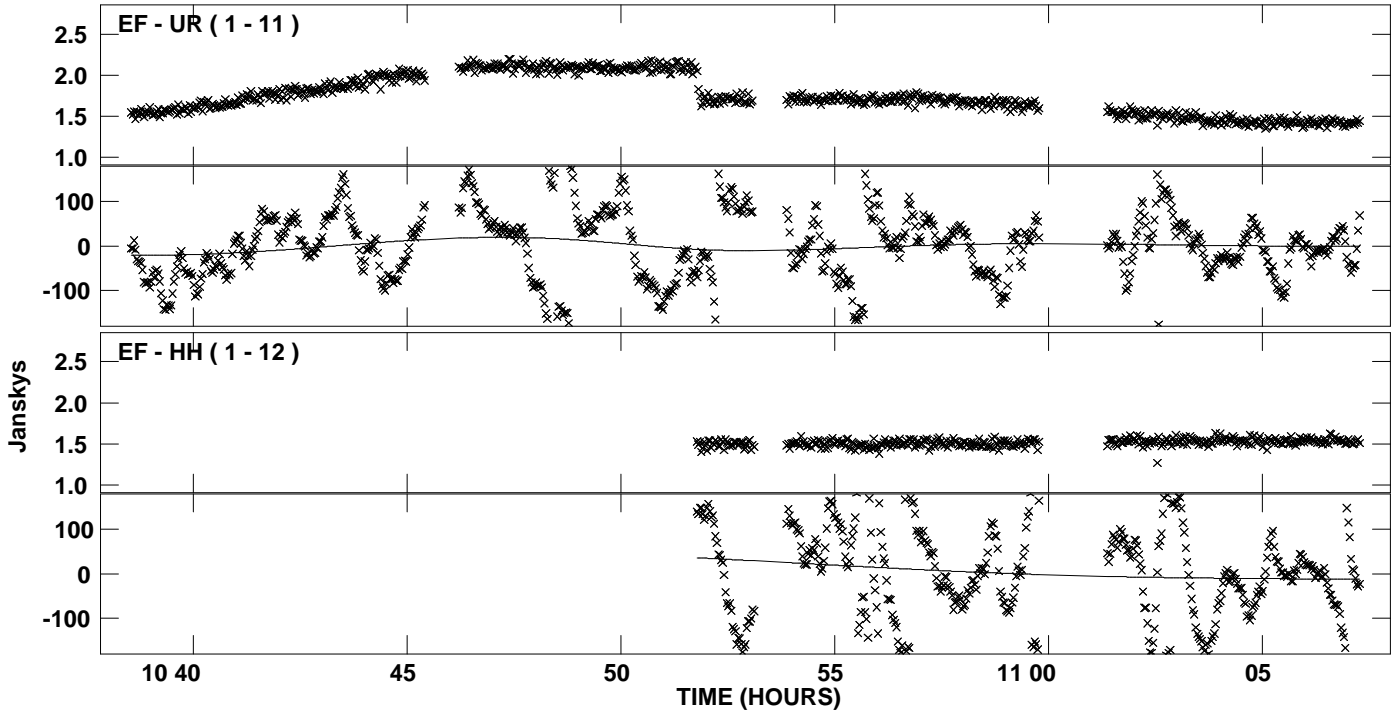




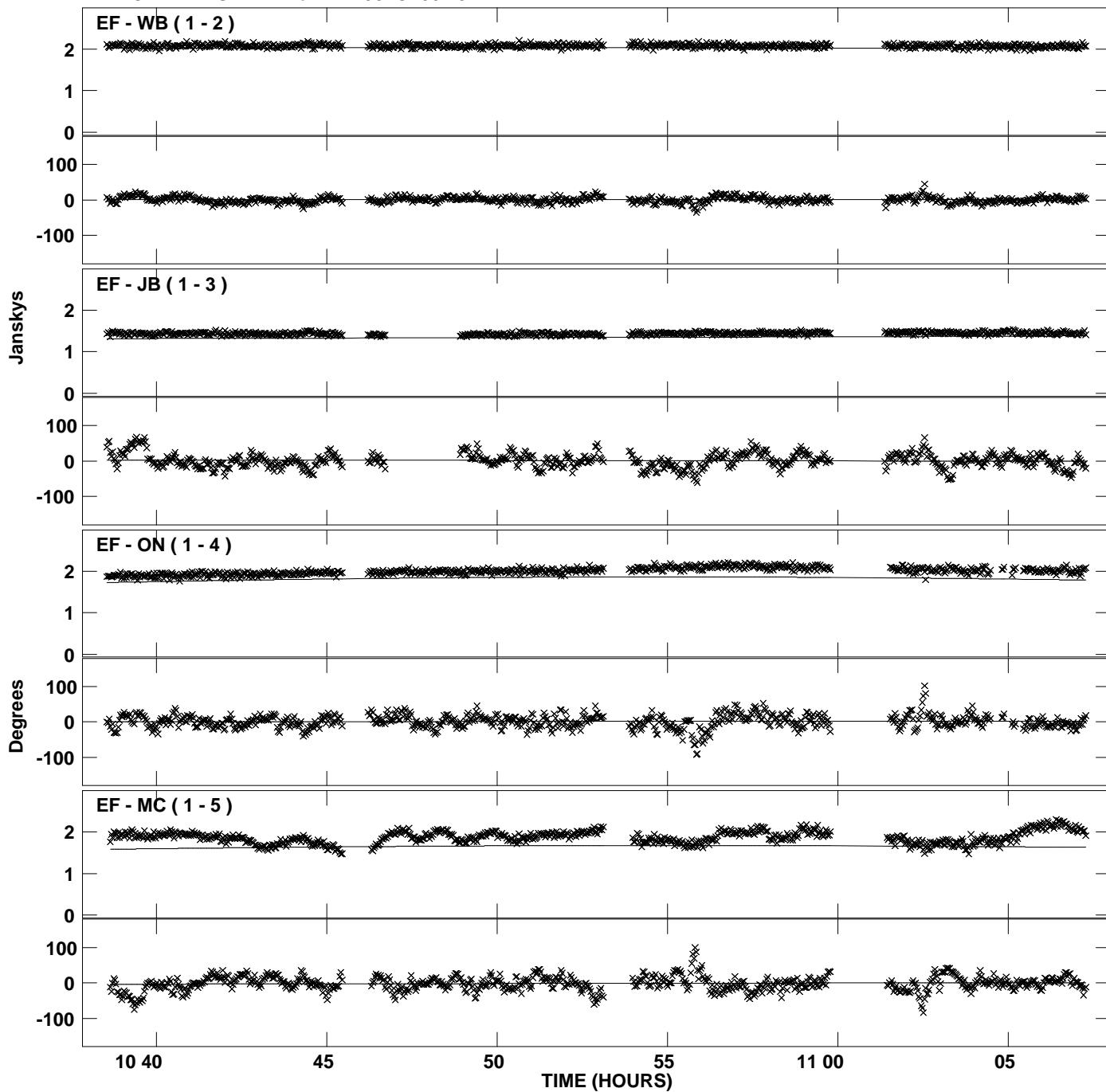
PLot file version 41 created 25-JUL-2012 21:27:46  
Amplitude andPhase vs Time for DA193.MULTI.1 CL # 3  
IF 6 CHAN 1 STK RR of DA193.ICL001.3



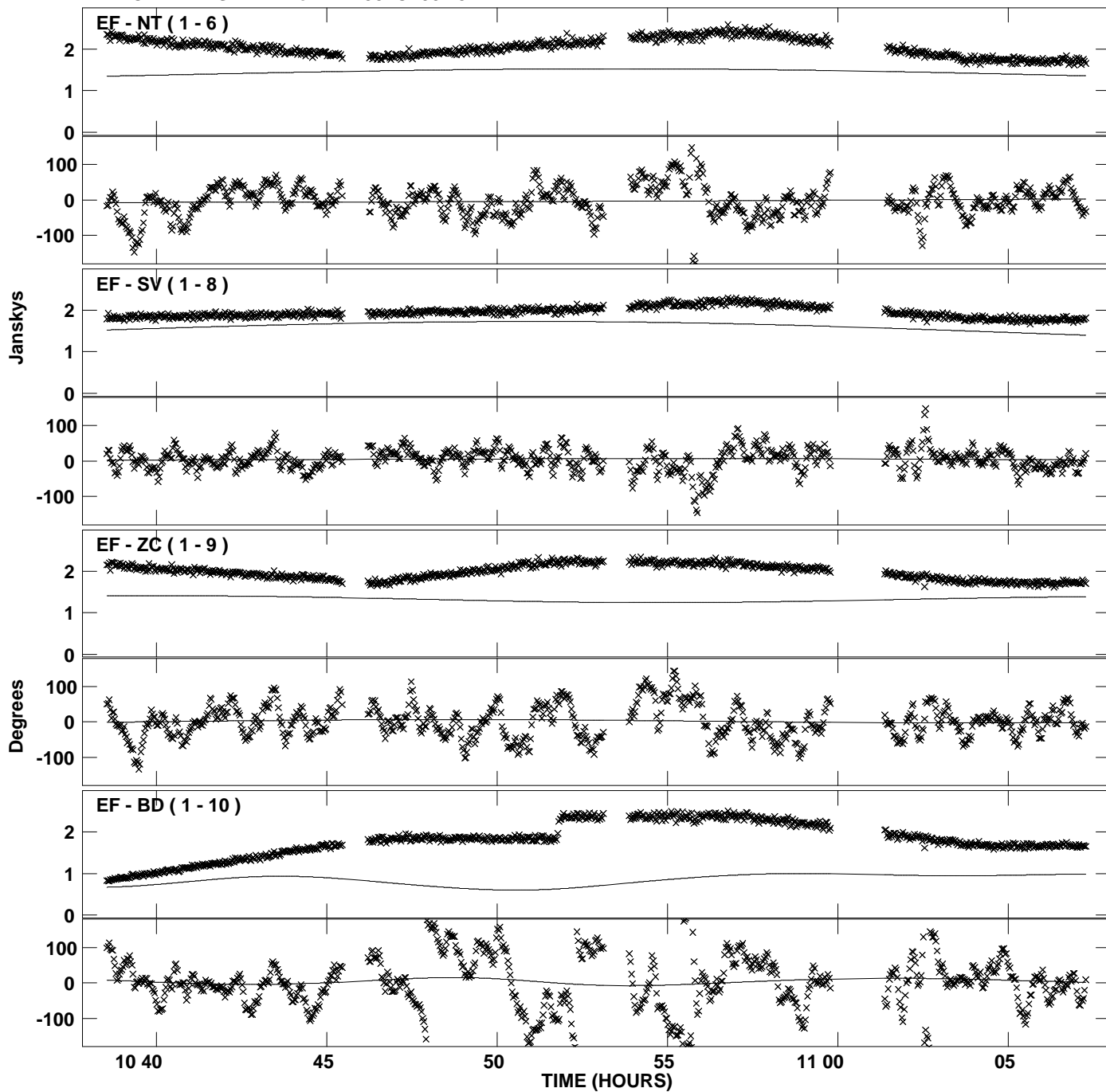
PLot file version 42 created 25-JUL-2012 21:27:46  
Amplitude andPhase vs Time for DA193.MULTI.1 CL # 3  
IF 6 CHAN 1 STK RR of DA193.ICL001.3



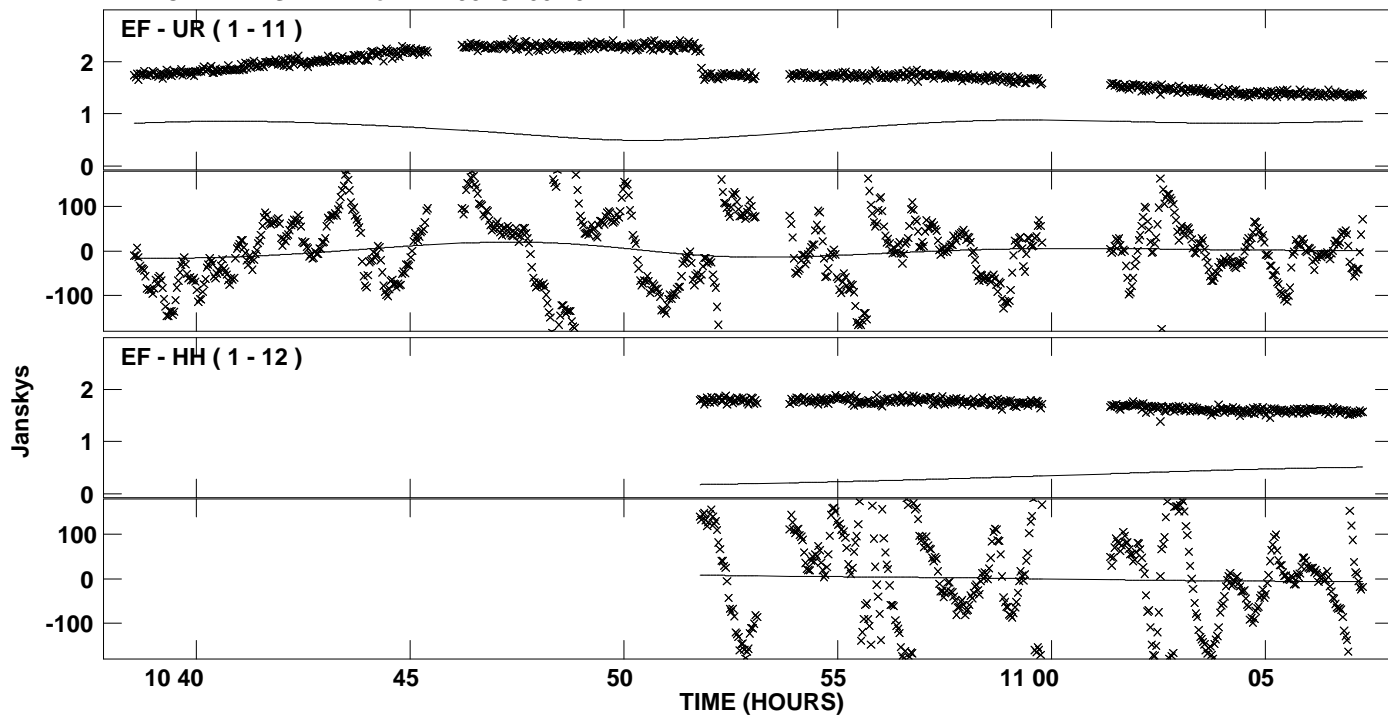
PLot file version 43 created 25-JUL-2012 21:27:46  
Amplitude andPhase vs Time for DA193.MULTI.1 CL # 3  
IF 7 CHAN 1 STK RR of DA193.ICL001.3



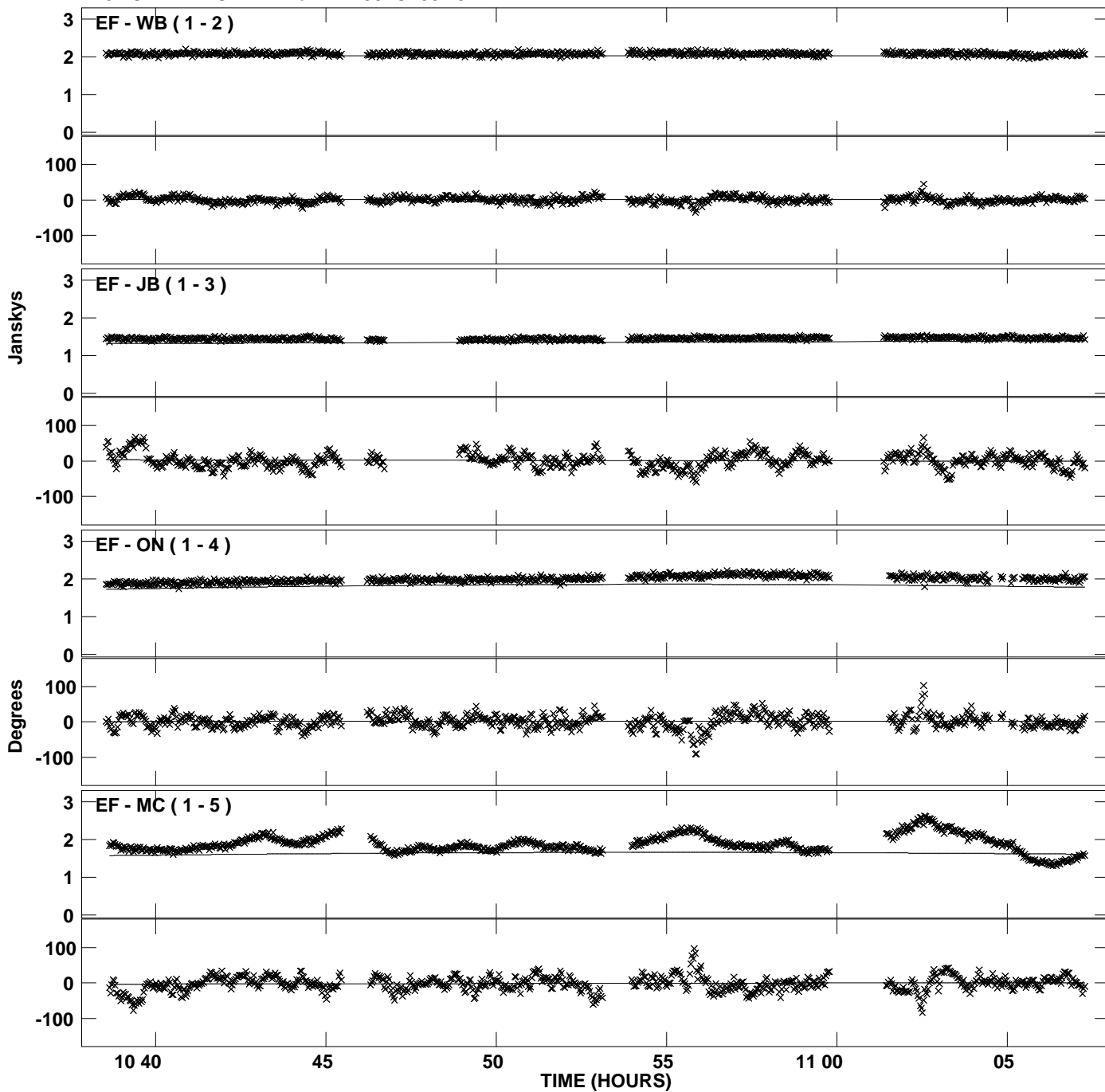
Plot file version 44 created 25-JUL-2012 21:27:46  
Amplitude and Phase vs Time for DA193.MULTI.1 CL # 3  
IF 7 CHAN 1 STK RR of DA193.ICL001.3



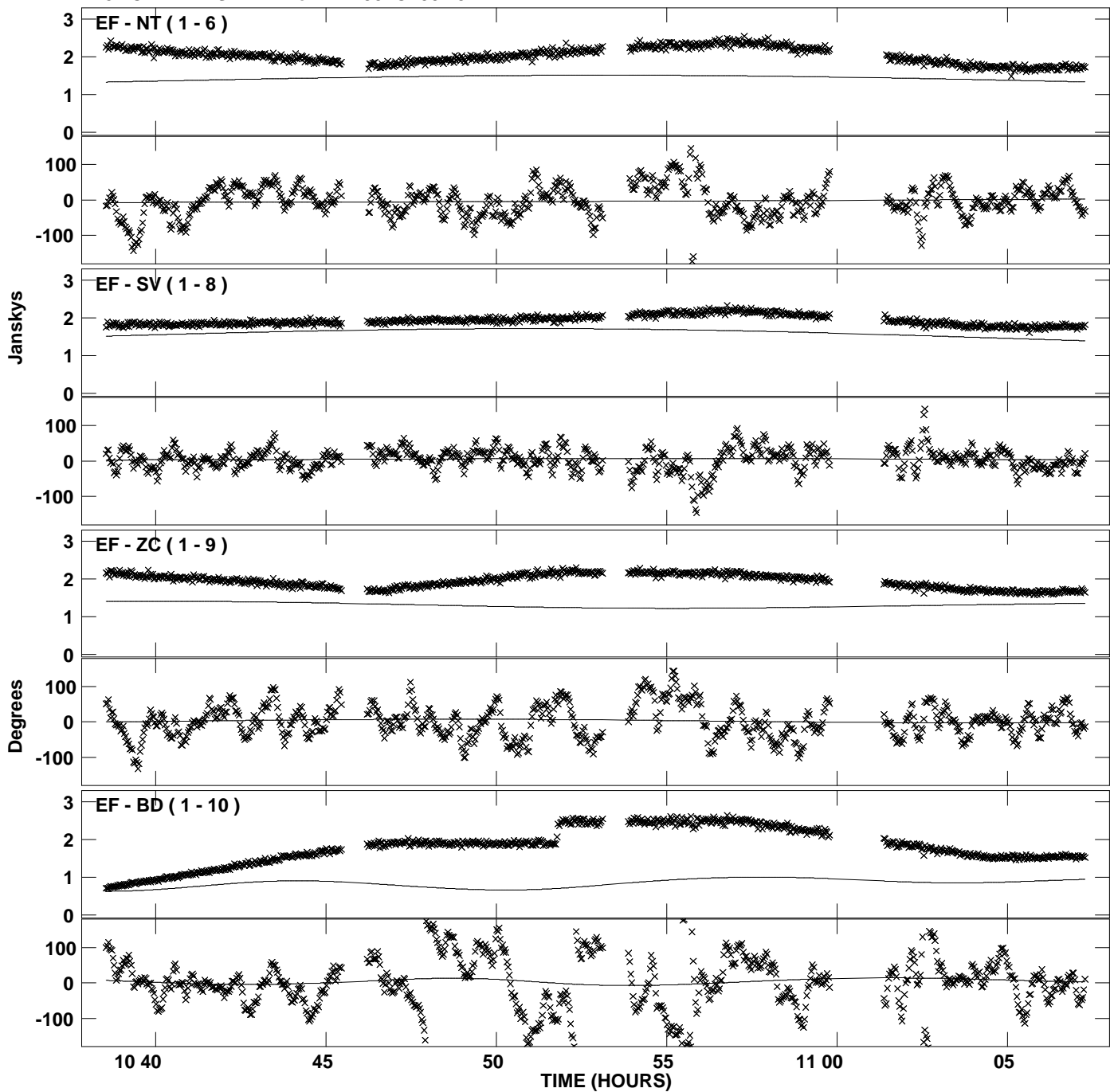
Plot file version 45 created 25-JUL-2012 21:27:46  
Amplitude and Phase vs Time for DA193.MULTI.1 CL # 3  
IF 7 CHAN 1 STK RR of DA193.ICL001.3



PLot file version 46 created 25-JUL-2012 21:27:46  
Amplitude andPhase vs Time for DA193.MULTI.1 CL # 3  
IF 8 CHAN 1 STK RR of DA193.ICL001.3



Plot file version 47 created 25-JUL-2012 21:27:46  
Amplitude and Phase vs Time for DA193.MULTI.1 CL # 3  
IF 8 CHAN 1 STK RR of DA193.ICL001.3



Plot file version 48 created 25-JUL-2012 21:27:46  
Amplitude andPhase vs Time for DA193.MULTI.1 CL # 3  
IF 8 CHAN 1 STK RR of DA193.ICL001.3

