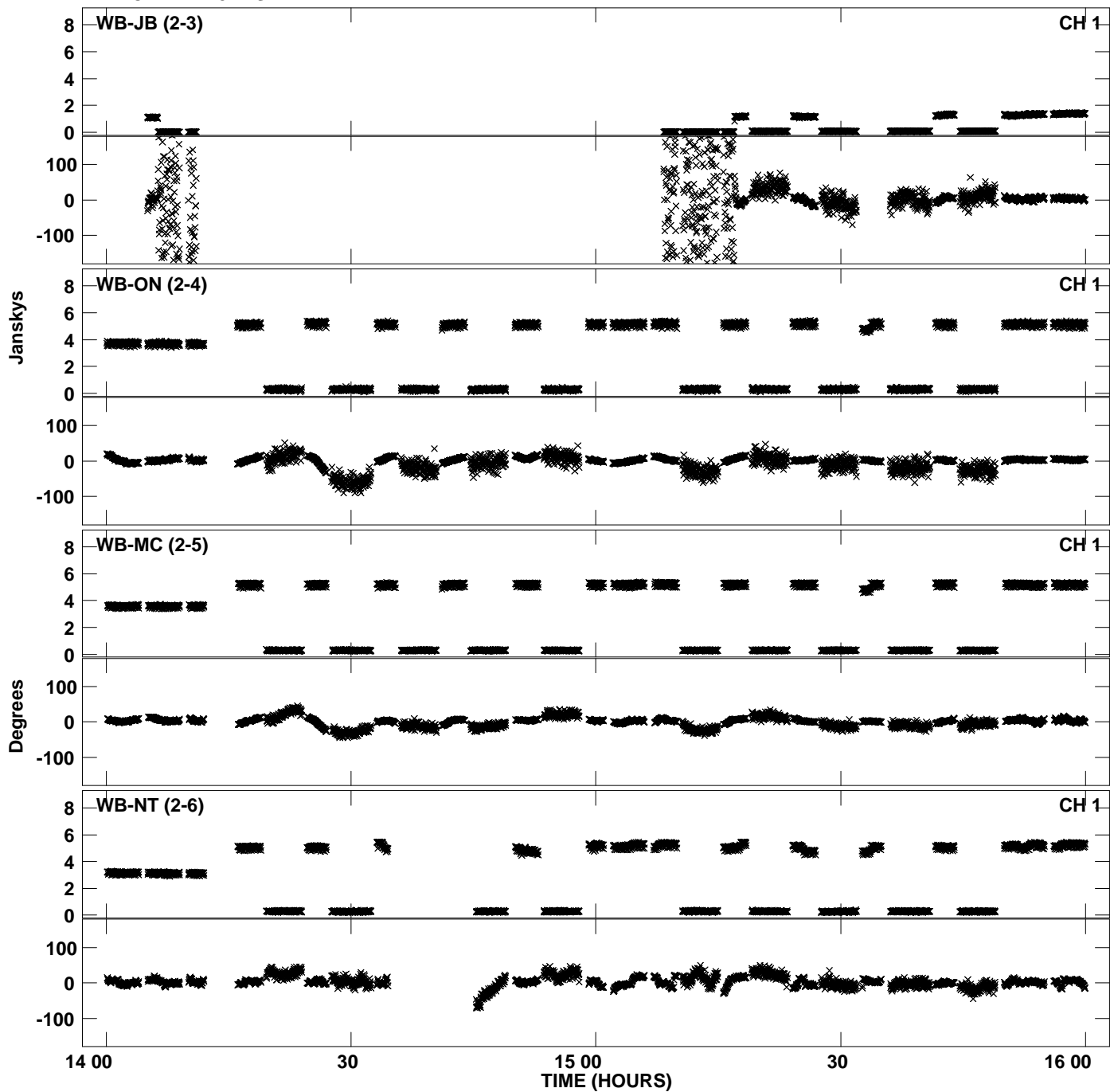
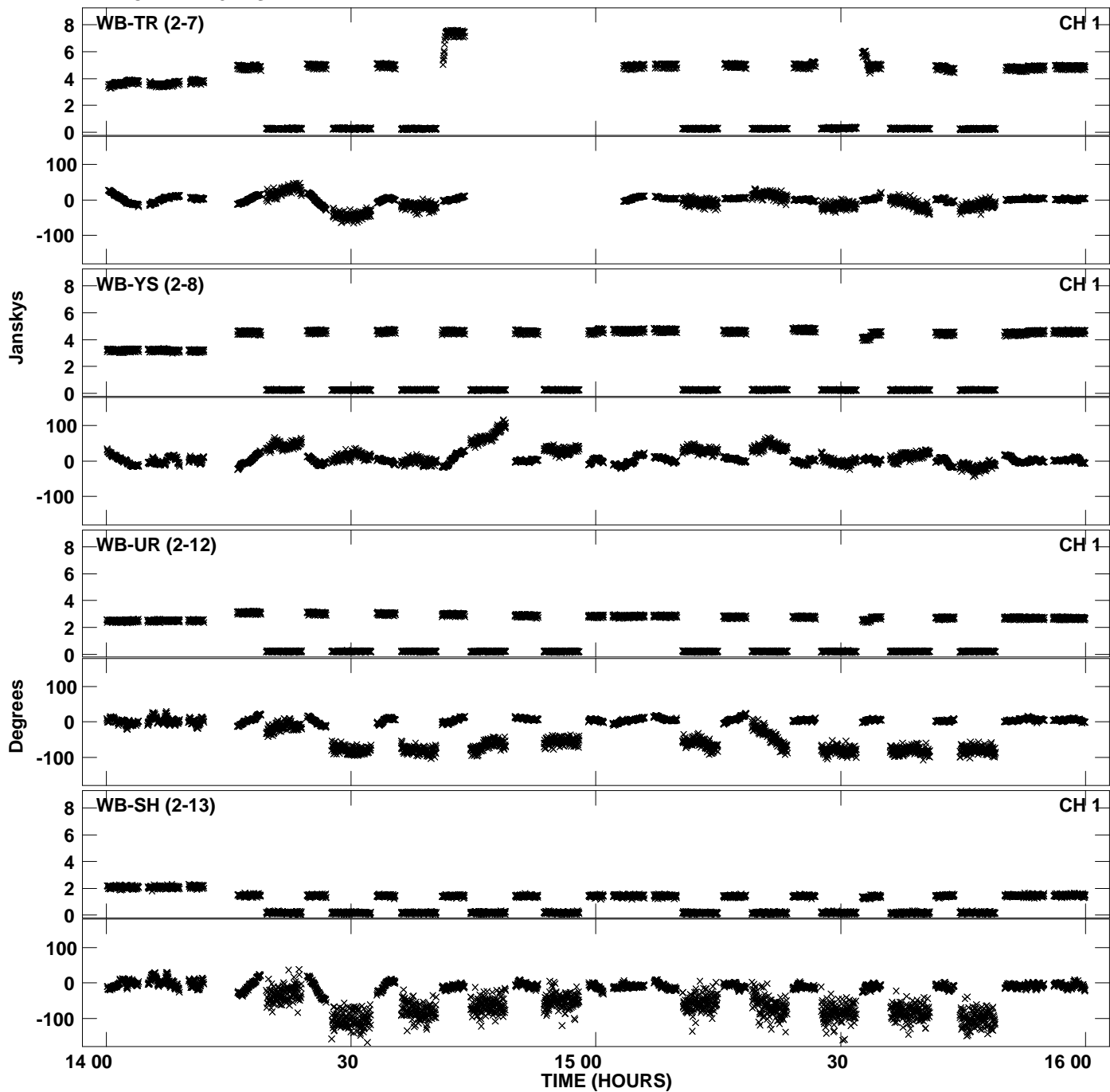


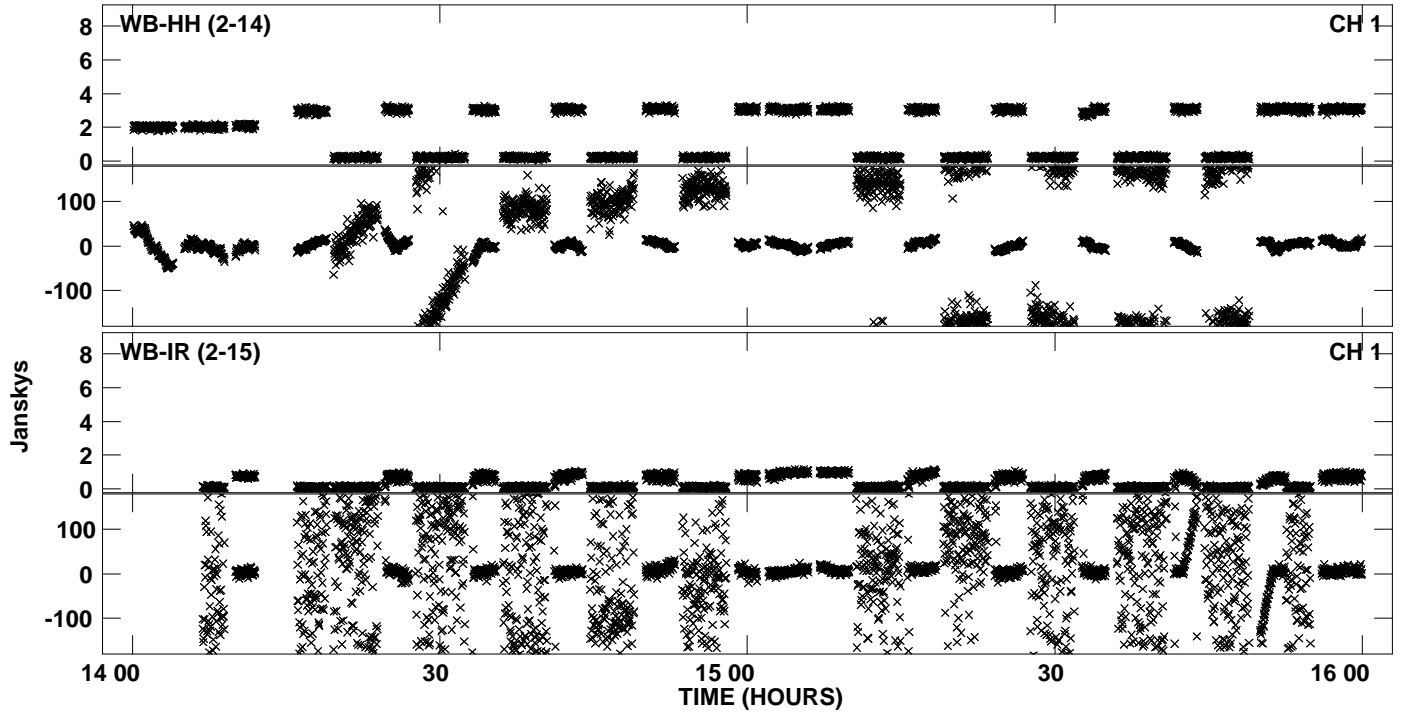
Plot file version 1 created 17-JUL-2013 14:43:03
Amplitude and Phase vs Time for N13C1.UVDATA.1 Vect aver. CL # 3
IF 1 CHAN 1 - 32 STK LL



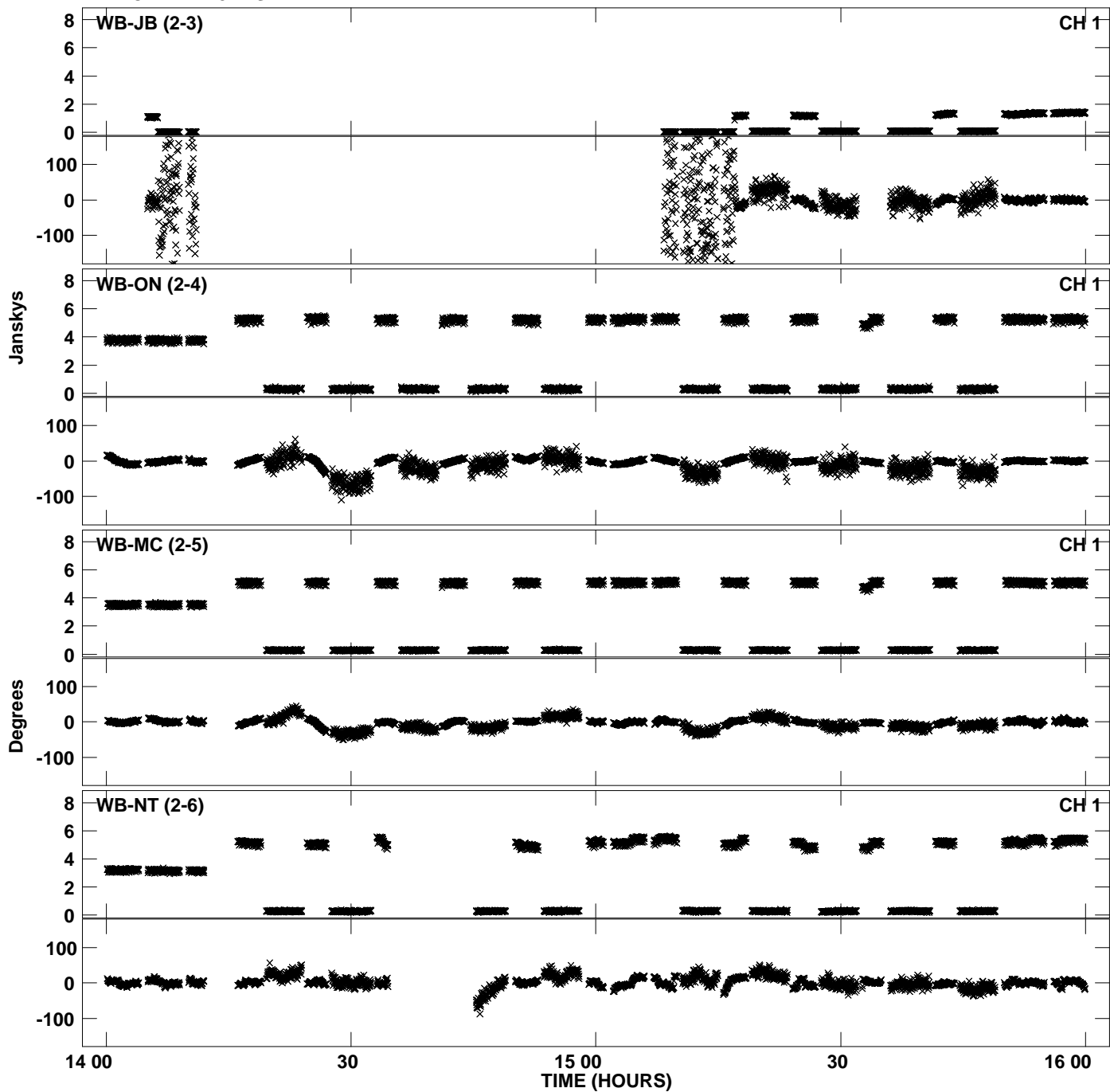
Plot file version 2 created 17-JUL-2013 14:43:03
Amplitude and Phase vs Time for N13C1.UVDATA.1 Vect aver. CL # 3
IF 1 CHAN 1 - 32 STK LL



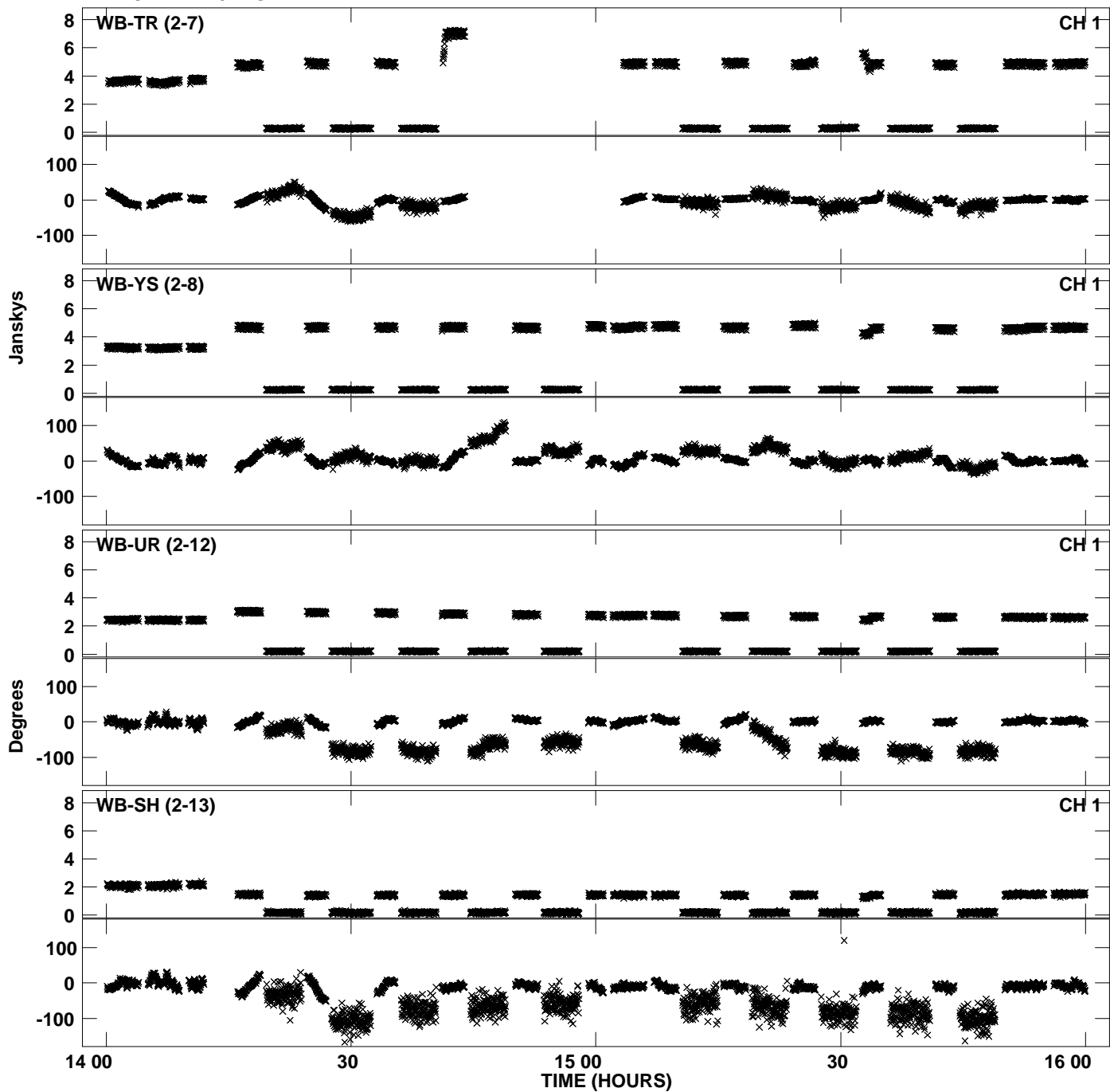
Plot file version 3 created 17-JUL-2013 14:43:03
Amplitude and Phase vs Time for N13C1.UVDATA.1 Vect aver. CL # 3
IF 1 CHAN 1 - 32 STK LL



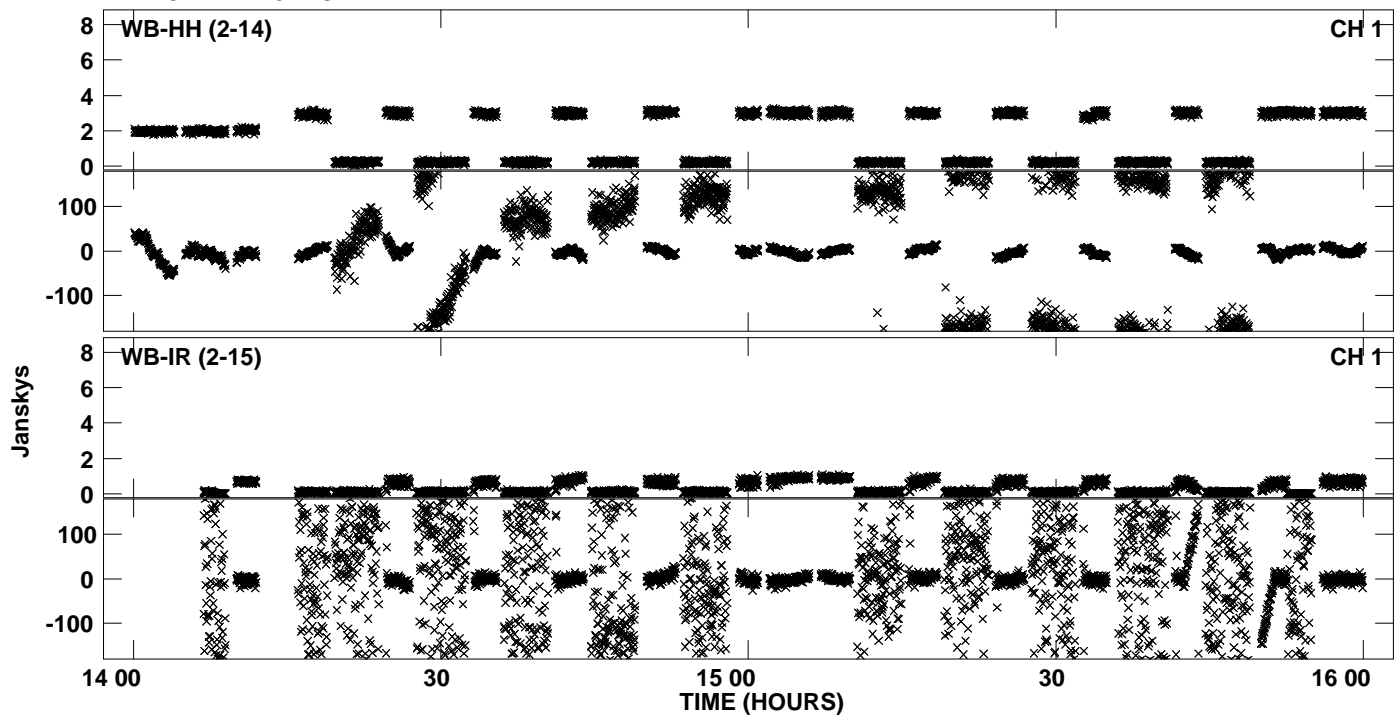
Plot file version 4 created 17-JUL-2013 14:43:07
Amplitude andPhase vs Time for N13C1.UVDATA.1 Vect aver. CL # 3
IF 2 CHAN 1 - 32 STK LL



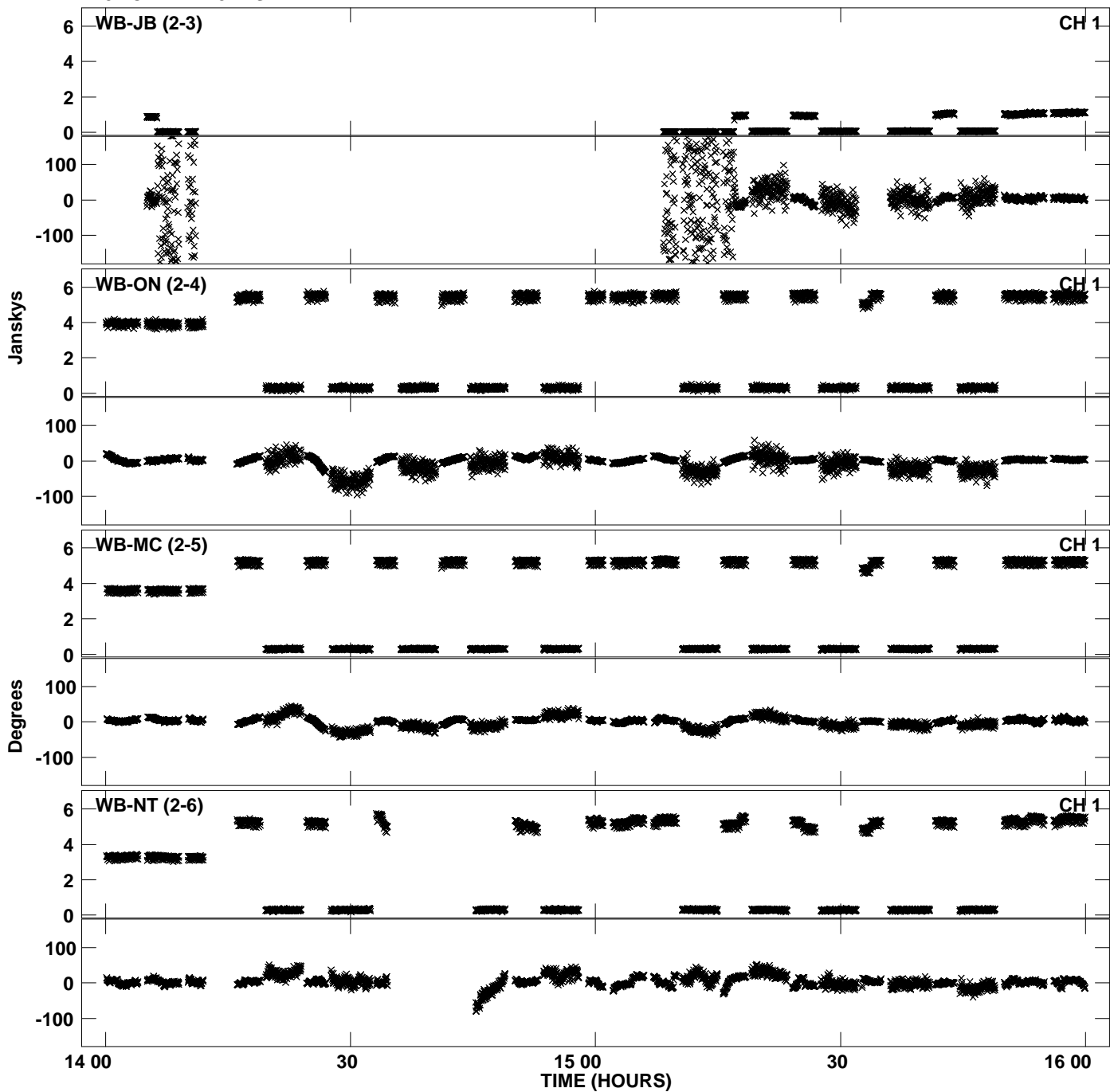
Plot file version 5 created 17-JUL-2013 14:43:07
Amplitude andPhase vs Time for N13C1.UVDATA.1 Vect aver. CL # 3
IF 2 CHAN 1 - 32 STK LL



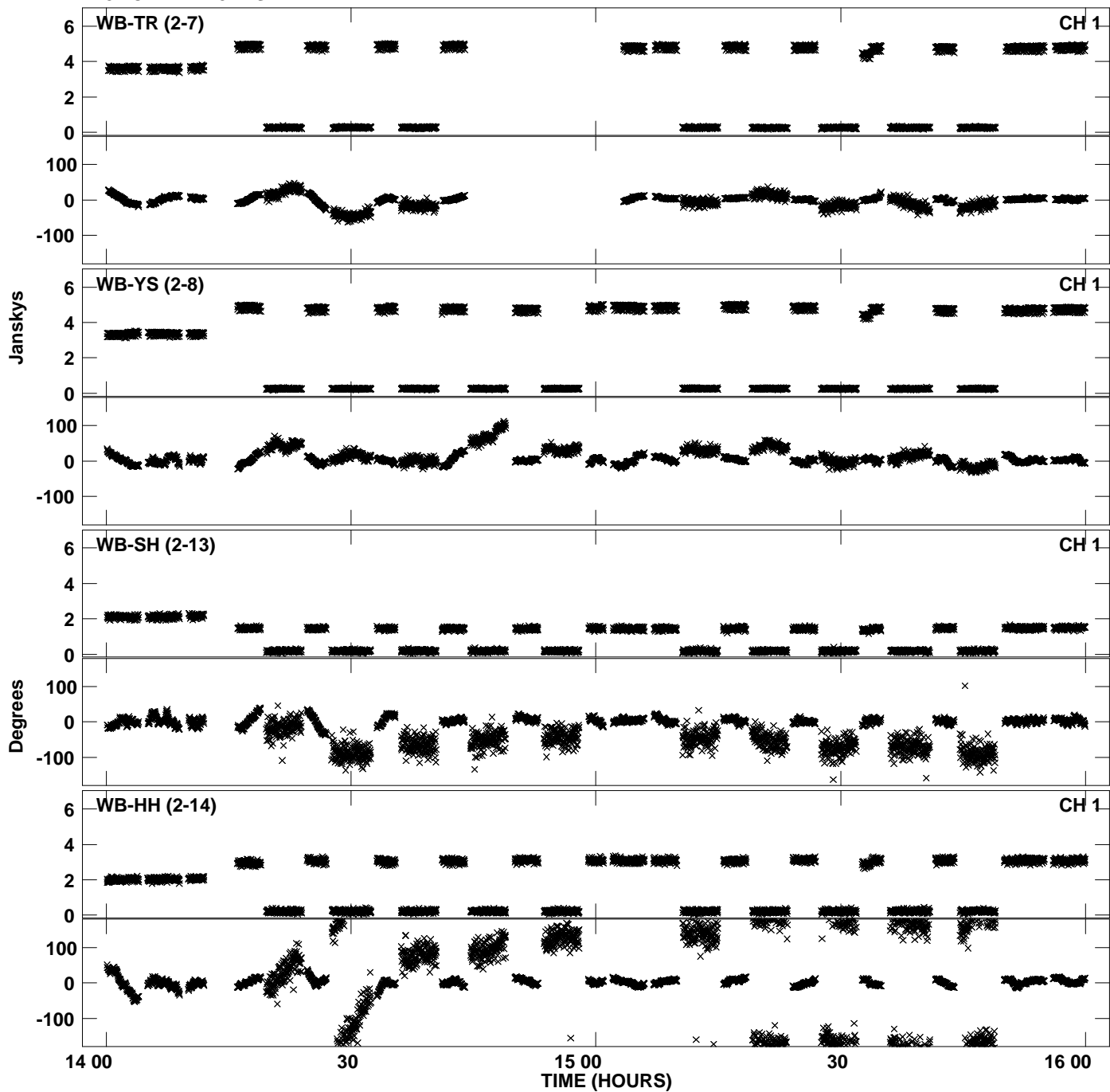
Plot file version 6 created 17-JUL-2013 14:43:07
Amplitude and Phase vs Time for N13C1.UVDATA.1 Vect aver. CL # 3
IF 2 CHAN 1 - 32 STK LL



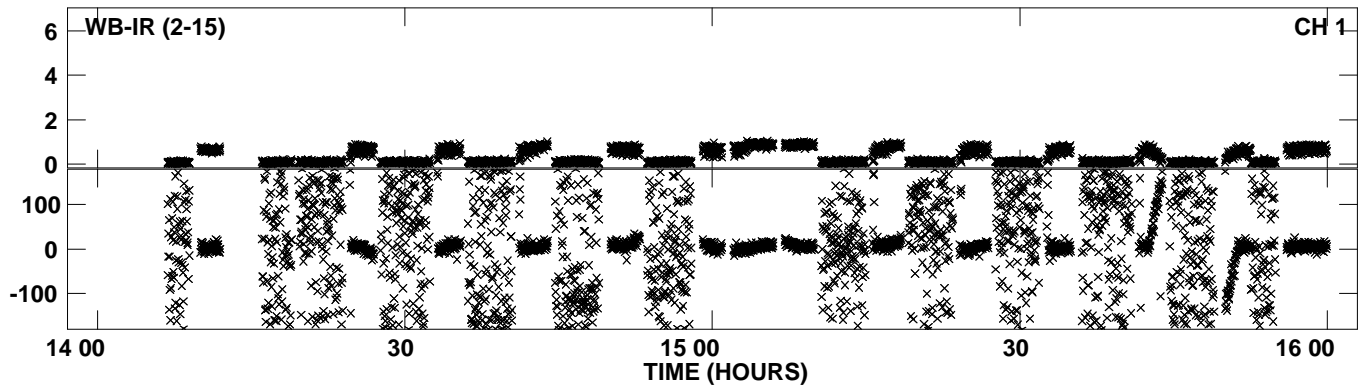
Plot file version 7 created 17-JUL-2013 14:43:10
Amplitude andPhase vs Time for N13C1.UVDATA.1 Vect aver. CL # 3
IF 3 CHAN 1 - 32 STK LL



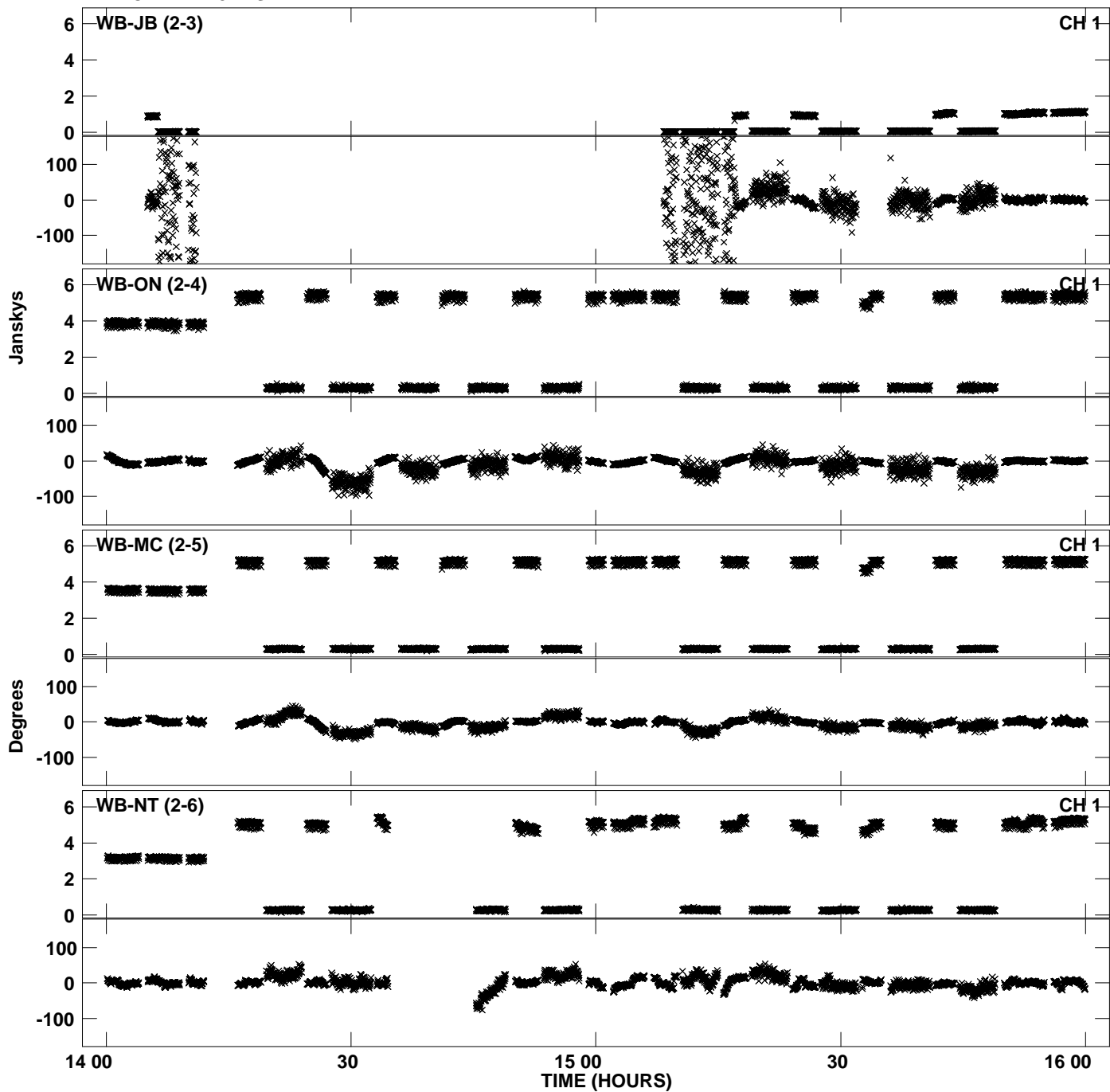
Plot file version 8 created 17-JUL-2013 14:43:10
Amplitude and Phase vs Time for N13C1.UVDATA.1 Vect aver. CL # 3
IF 3 CHAN 1 - 32 STK LL



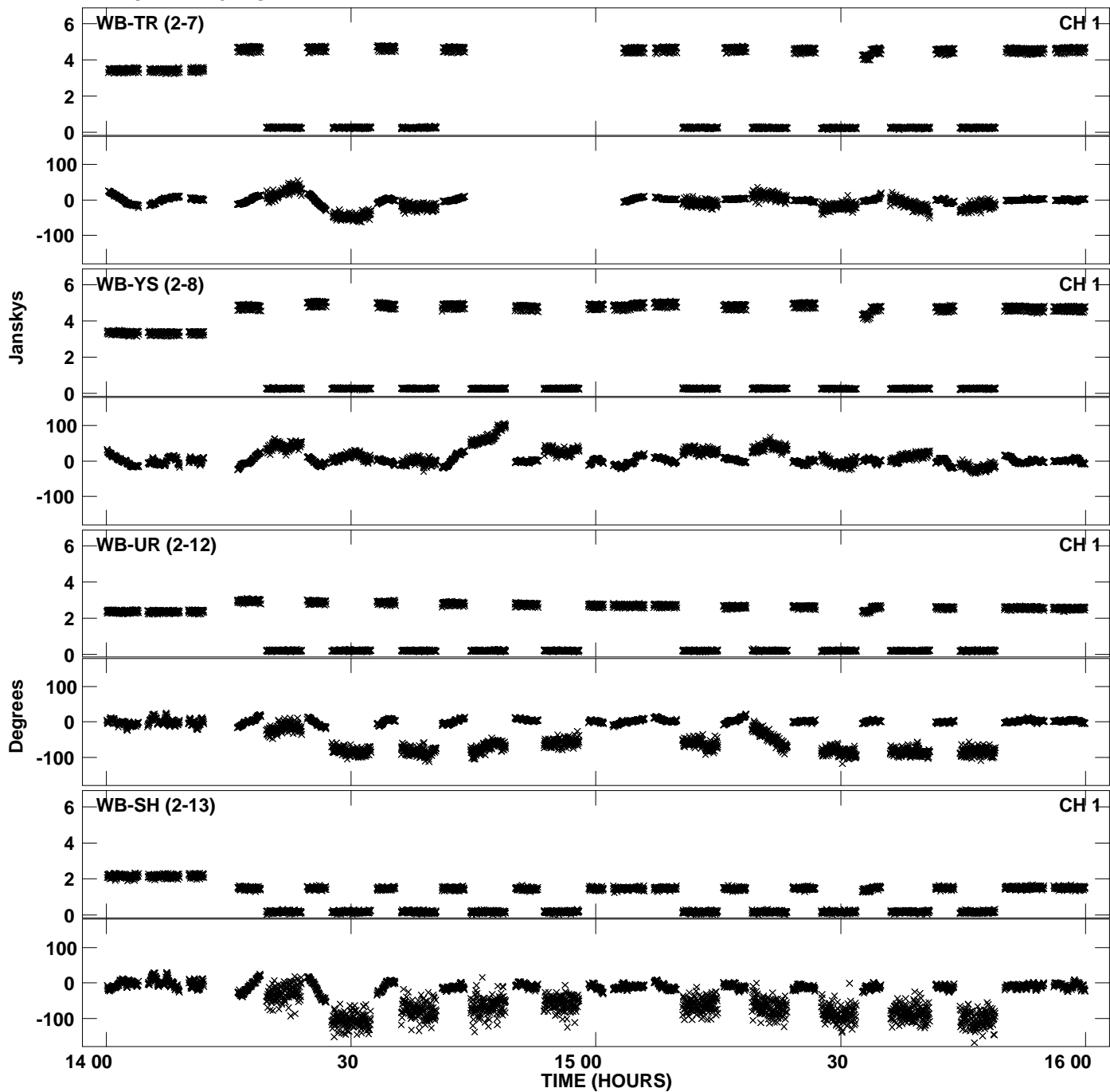
PLot file version 9 created 17-JUL-2013 14:43:10
Amplitude andPhase vs Time for N13C1.UVDATA.1 Vect aver. CL # 3
IF 3 CHAN 1 - 32 STK LL



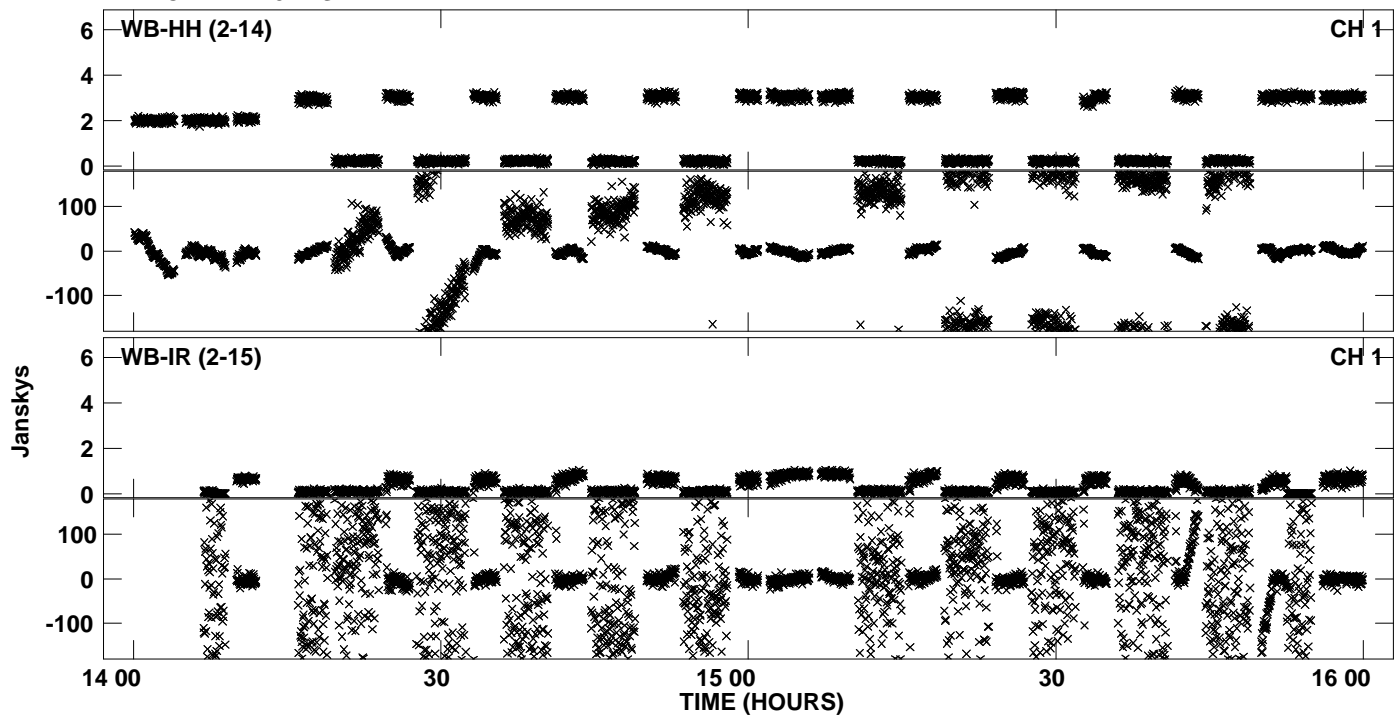
Plot file version 10 created 17-JUL-2013 14:43:14
Amplitude andPhase vs Time for N13C1.UVDATA.1 Vect aver. CL # 3
IF 4 CHAN 1 - 32 STK LL



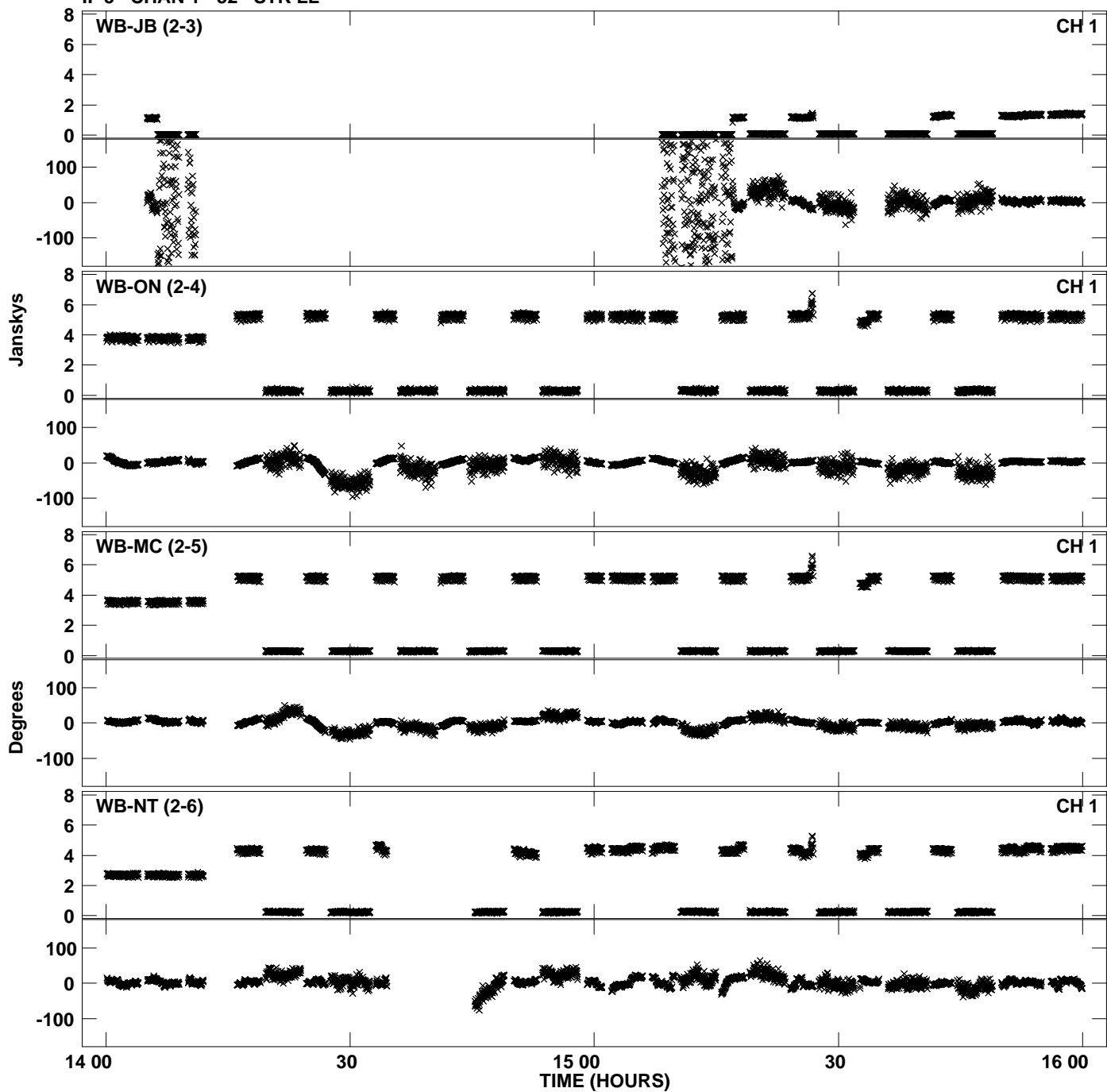
Plot file version 11 created 17-JUL-2013 14:43:14
Amplitude and Phase vs Time for N13C1.UVDATA.1 Vect aver. CL # 3
IF 4 CHAN 1 - 32 STK LL



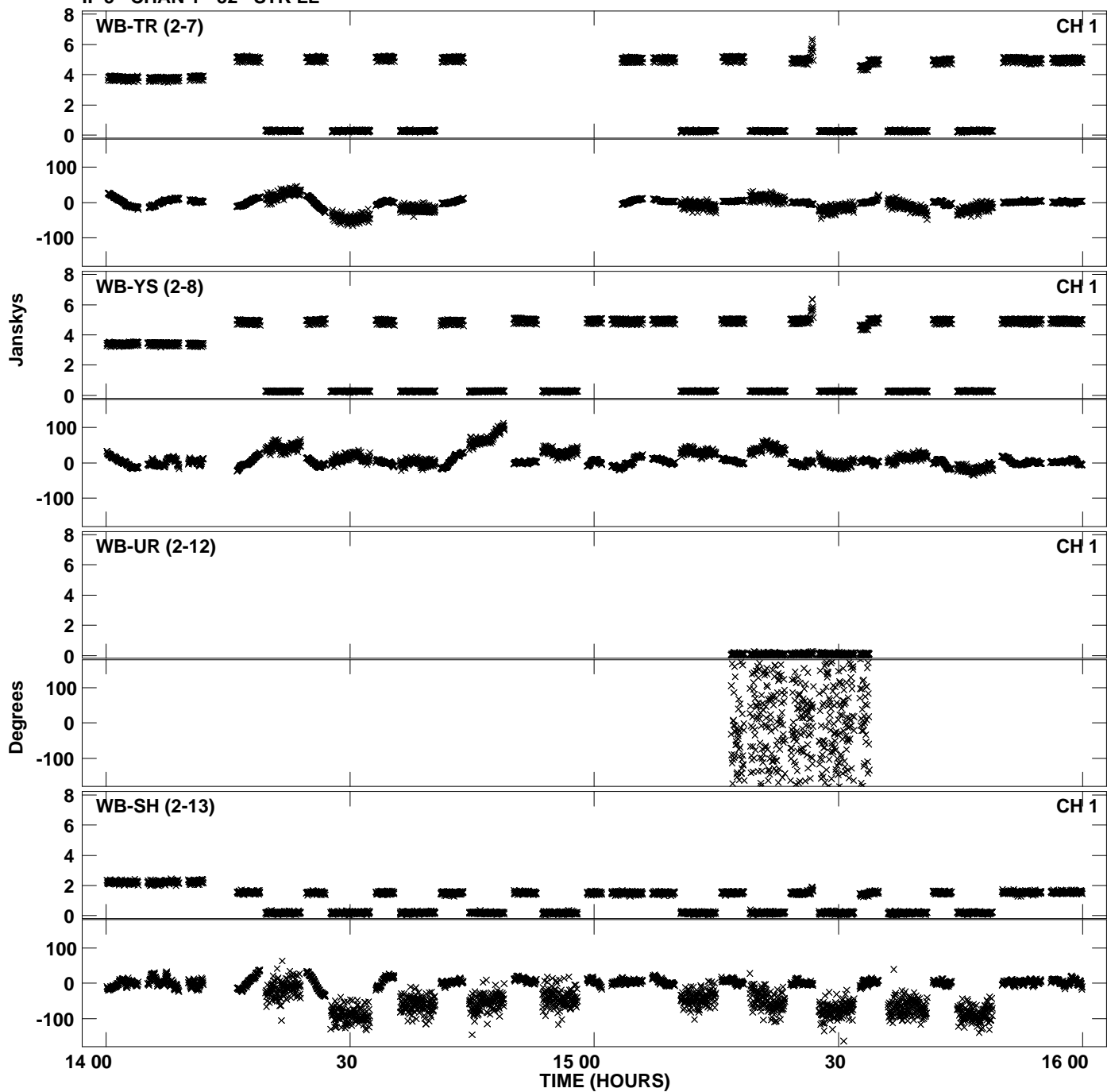
Plot file version 12 created 17-JUL-2013 14:43:14
Amplitude and Phase vs Time for N13C1.UVDATA.1 Vect aver. CL # 3
IF 4 CHAN 1 - 32 STK LL



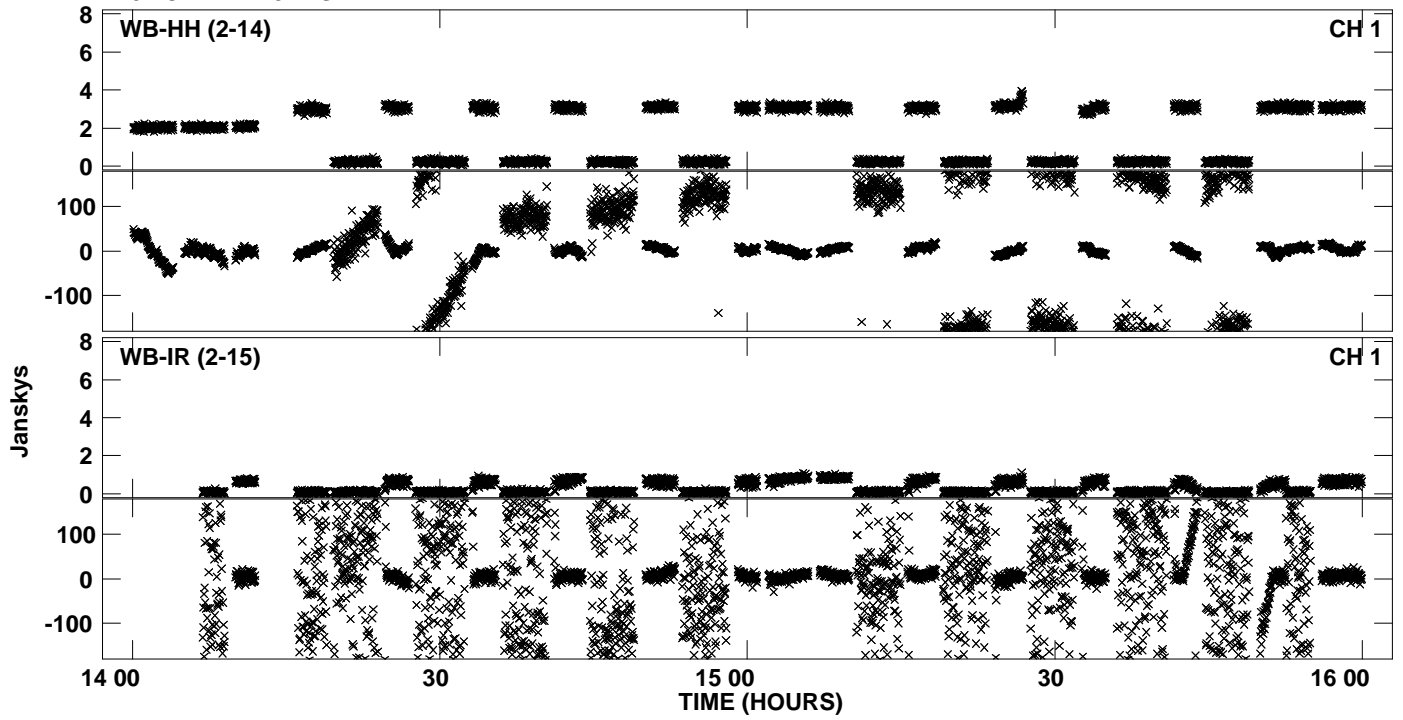
Plot file version 13 created 17-JUL-2013 14:43:18
Amplitude andPhase vs Time for N13C1.UVDATA.1 Vect aver. CL # 3
IF 5 CHAN 1 - 32 STK LL



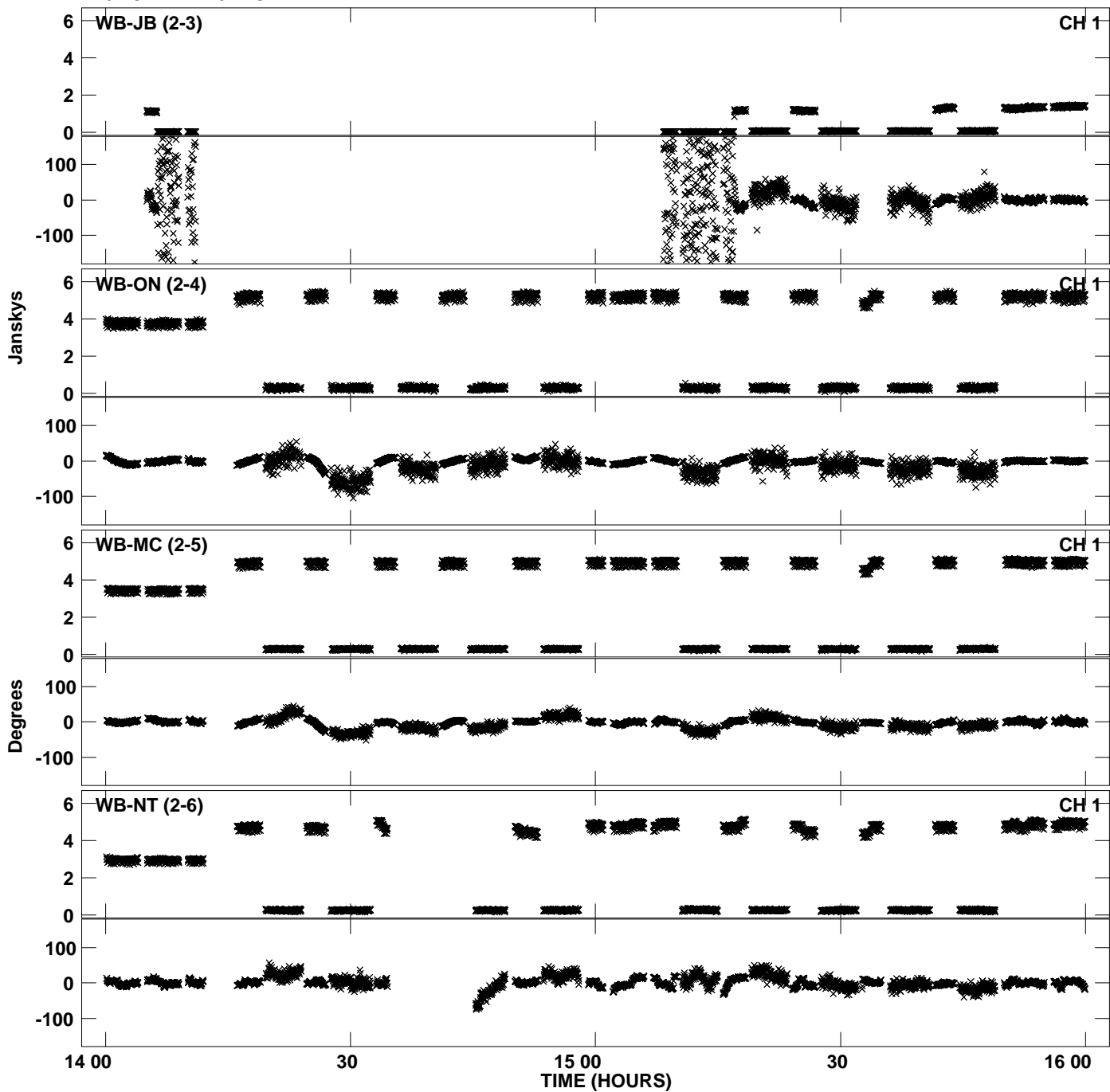
Plot file version 14 created 17-JUL-2013 14:43:18
Amplitude andPhase vs Time for N13C1.UVDATA.1 Vect aver. CL # 3
IF 5 CHAN 1 - 32 STK LL



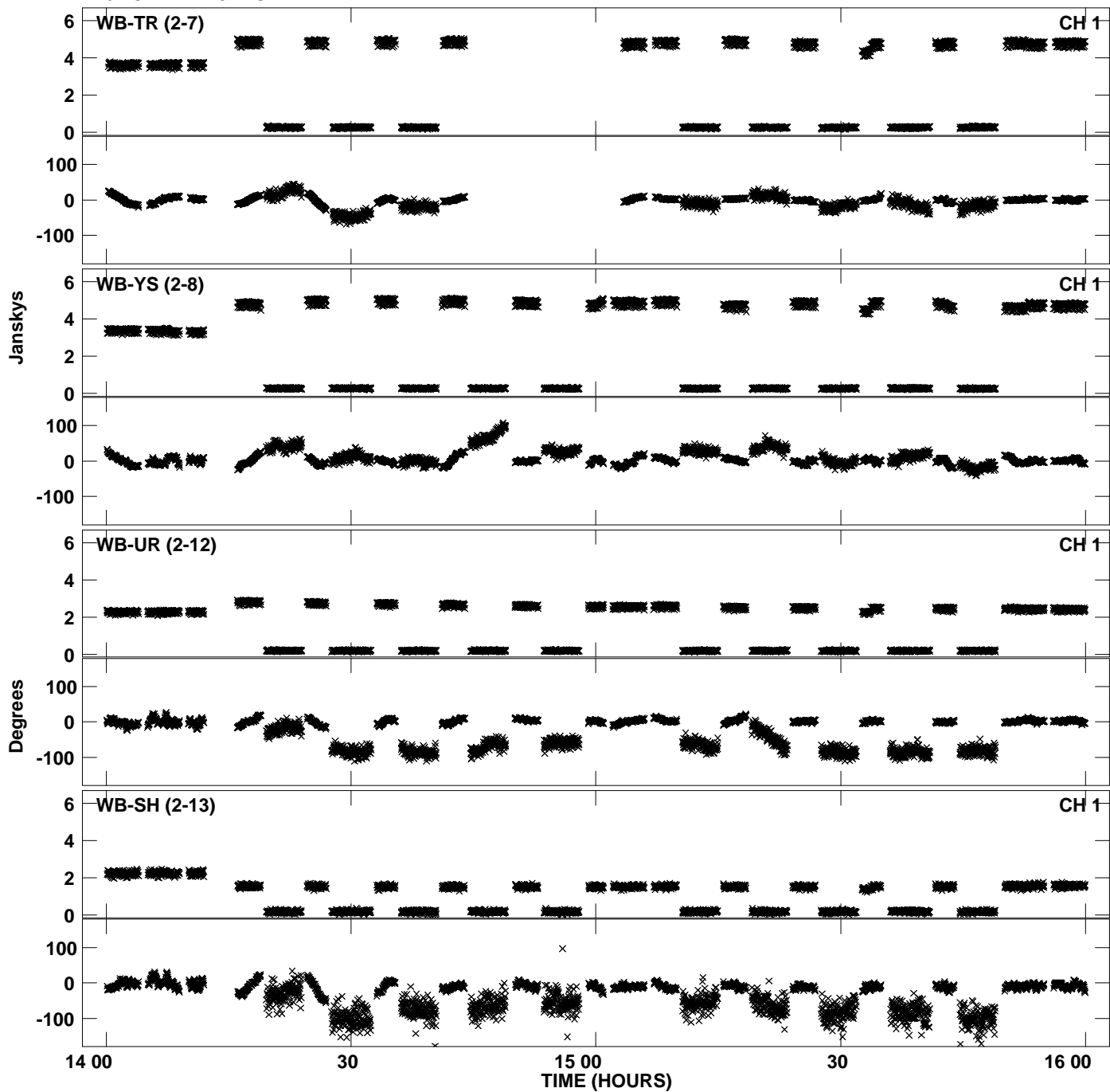
PLot file version 15 created 17-JUL-2013 14:43:18
Amplitude andPhase vs Time for N13C1.UVDATA.1 Vect aver. CL # 3
IF 5 CHAN 1 - 32 STK LL



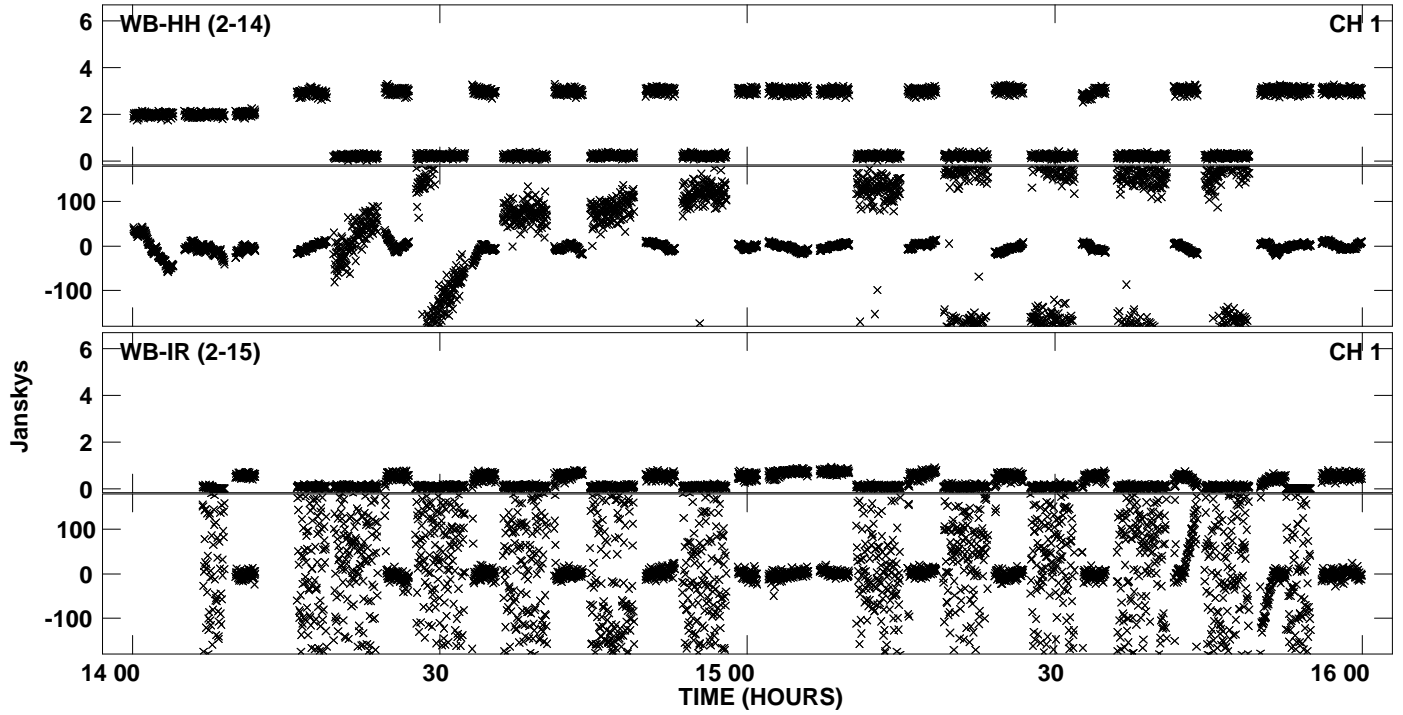
Plot file version 16 created 17-JUL-2013 14:43:22
Amplitude andPhase vs Time for N13C1.UVDATA.1 Vect aver. CL # 3
IF 6 CHAN 1 - 32 STK LL



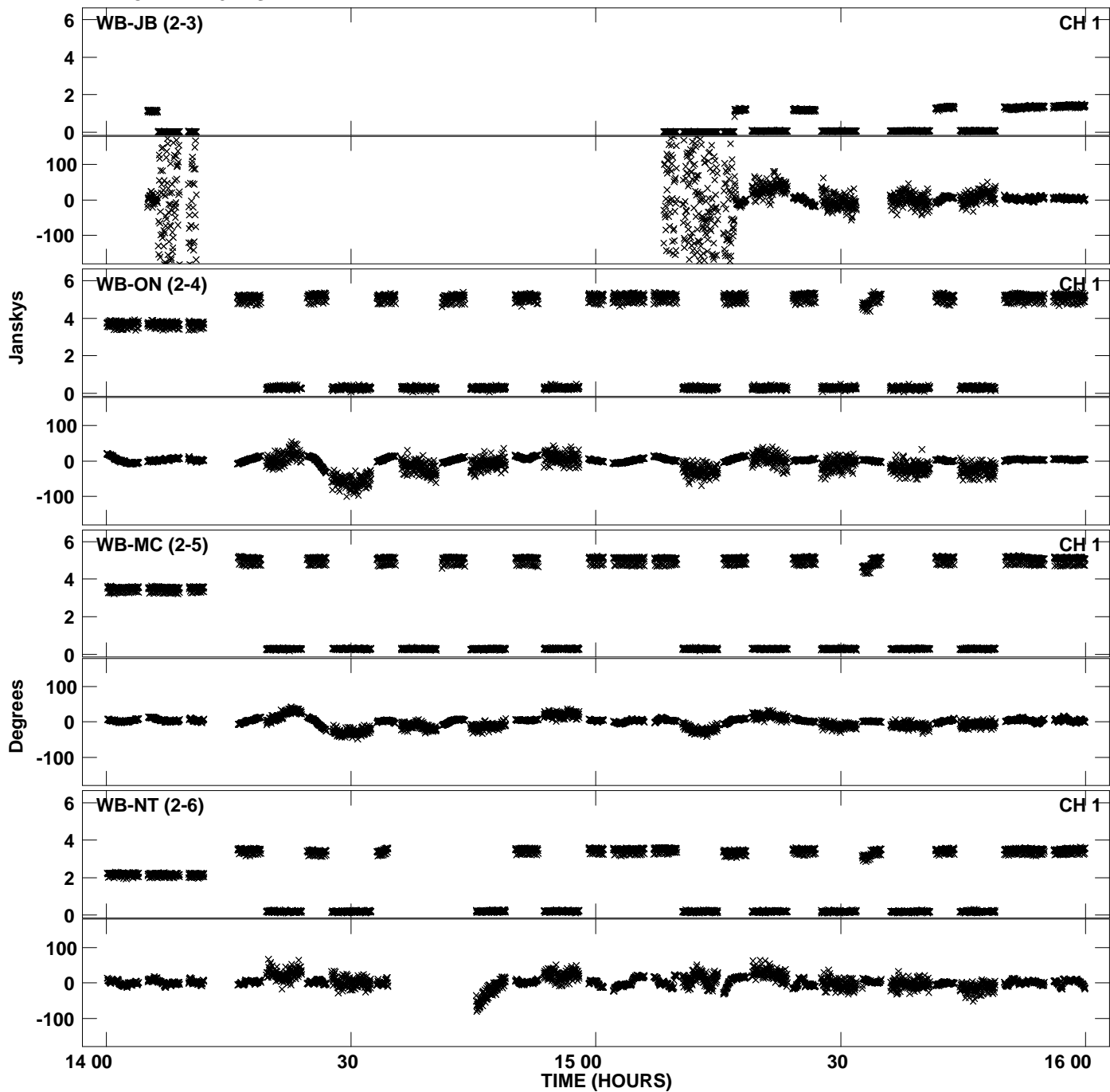
Plot file version 17 created 17-JUL-2013 14:43:22
Amplitude and Phase vs Time for N13C1.UVDATA.1 Vect aver. CL # 3
IF 6 CHAN 1 - 32 STK LL



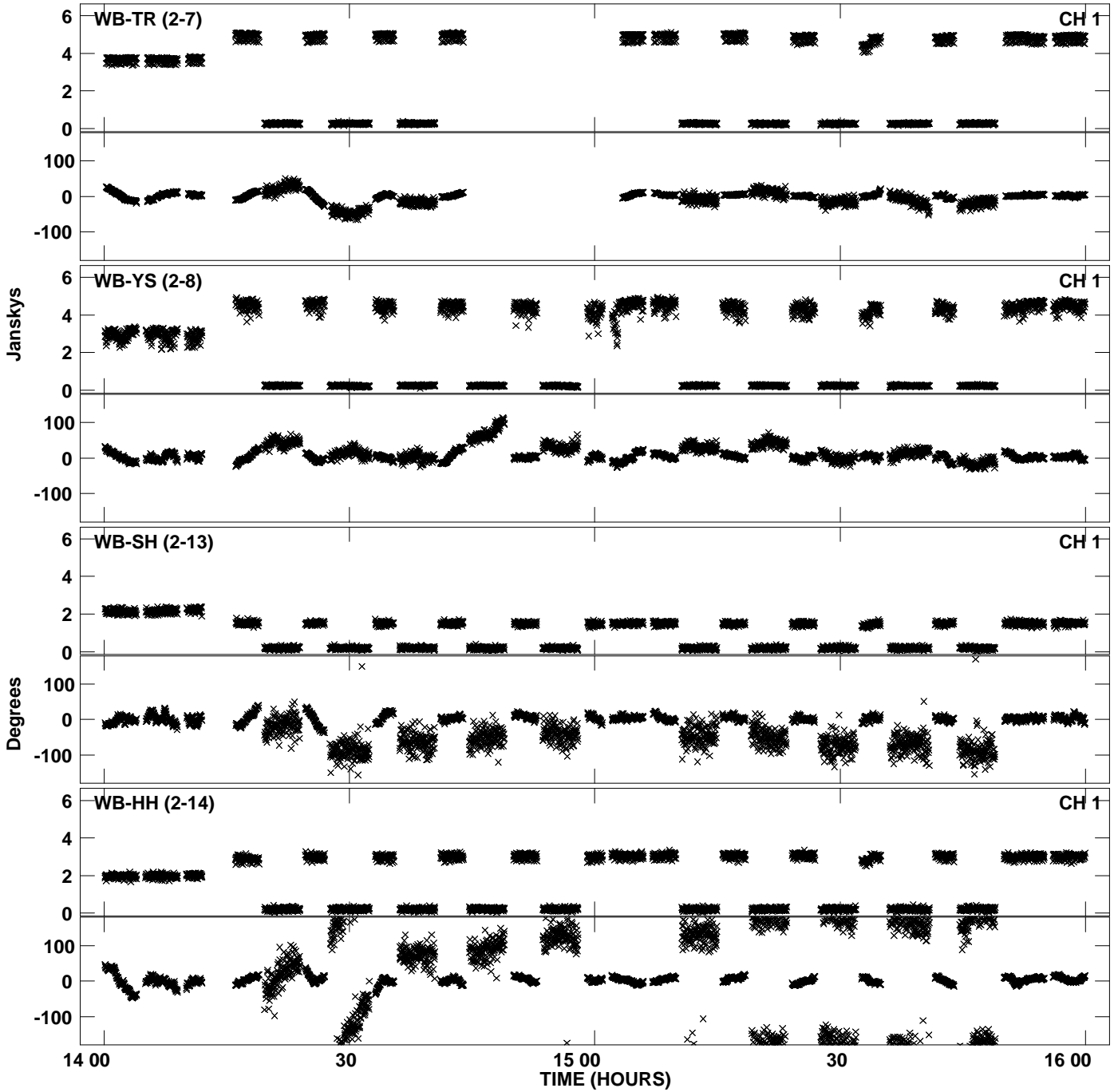
Plot file version 18 created 17-JUL-2013 14:43:22
Amplitude and Phase vs Time for N13C1.UVDATA.1 Vect aver. CL # 3
IF 6 CHAN 1 - 32 STK LL



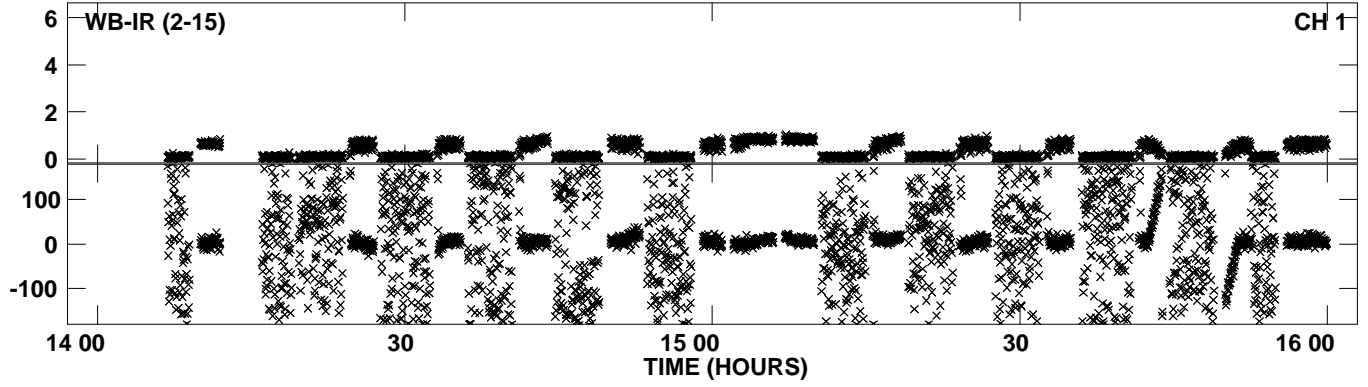
Plot file version 19 created 17-JUL-2013 14:43:26
Amplitude and Phase vs Time for N13C1.UVDATA.1 Vect aver. CL # 3
IF 7 CHAN 1 - 32 STK LL



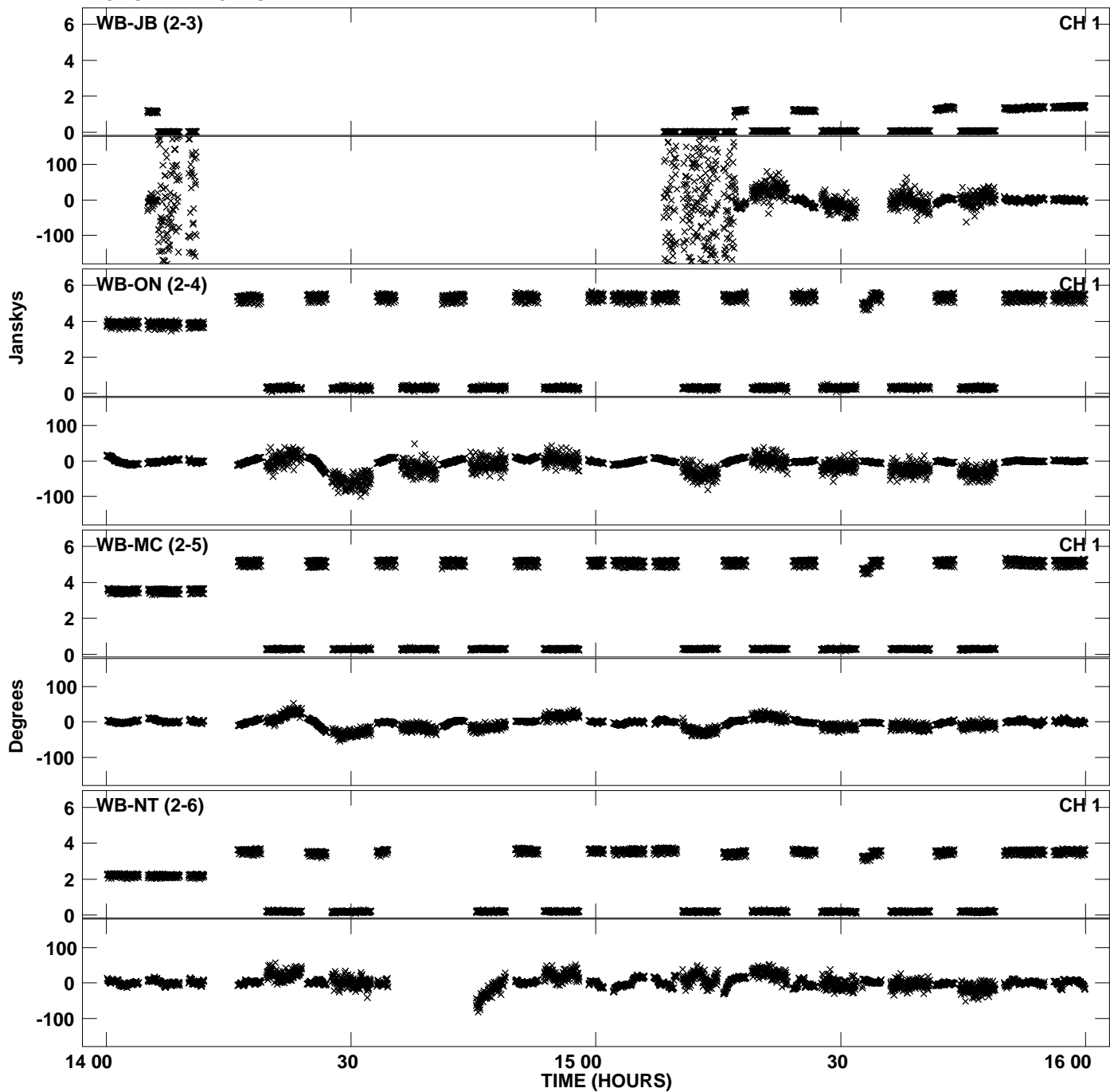
Plot file version 20 created 17-JUL-2013 14:43:26
Amplitude and Phase vs Time for N13C1.UVDATA.1 Vect aver. CL # 3
IF 7 CHAN 1 - 32 STK LL



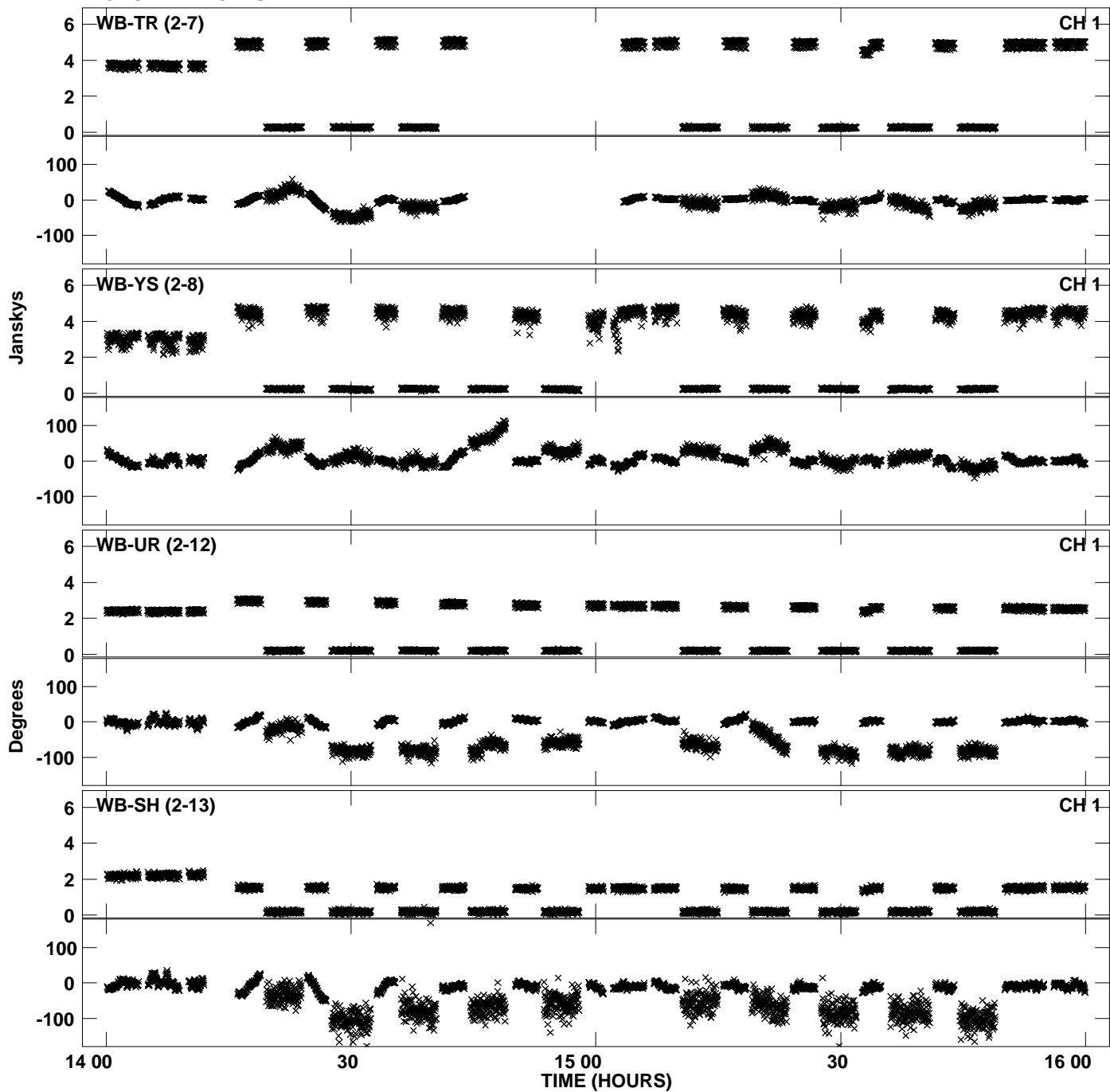
PLot file version 21 created 17-JUL-2013 14:43:26
Amplitude andPhase vs Time for N13C1.UVDATA.1 Vect aver. CL # 3
IF 7 CHAN 1 - 32 STK LL



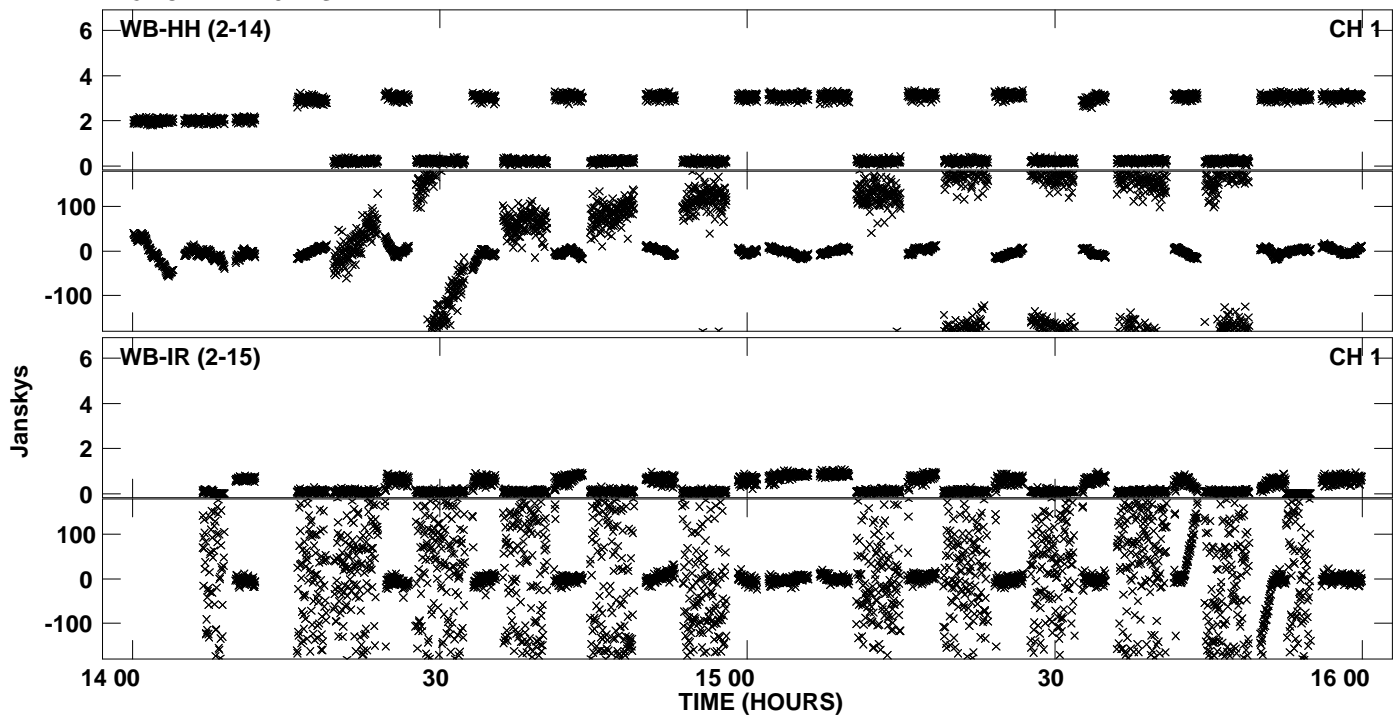
Plot file version 22 created 17-JUL-2013 14:43:29
Amplitude and Phase vs Time for N13C1.UVDATA.1 Vect aver. CL # 3
IF 8 CHAN 1 - 32 STK LL



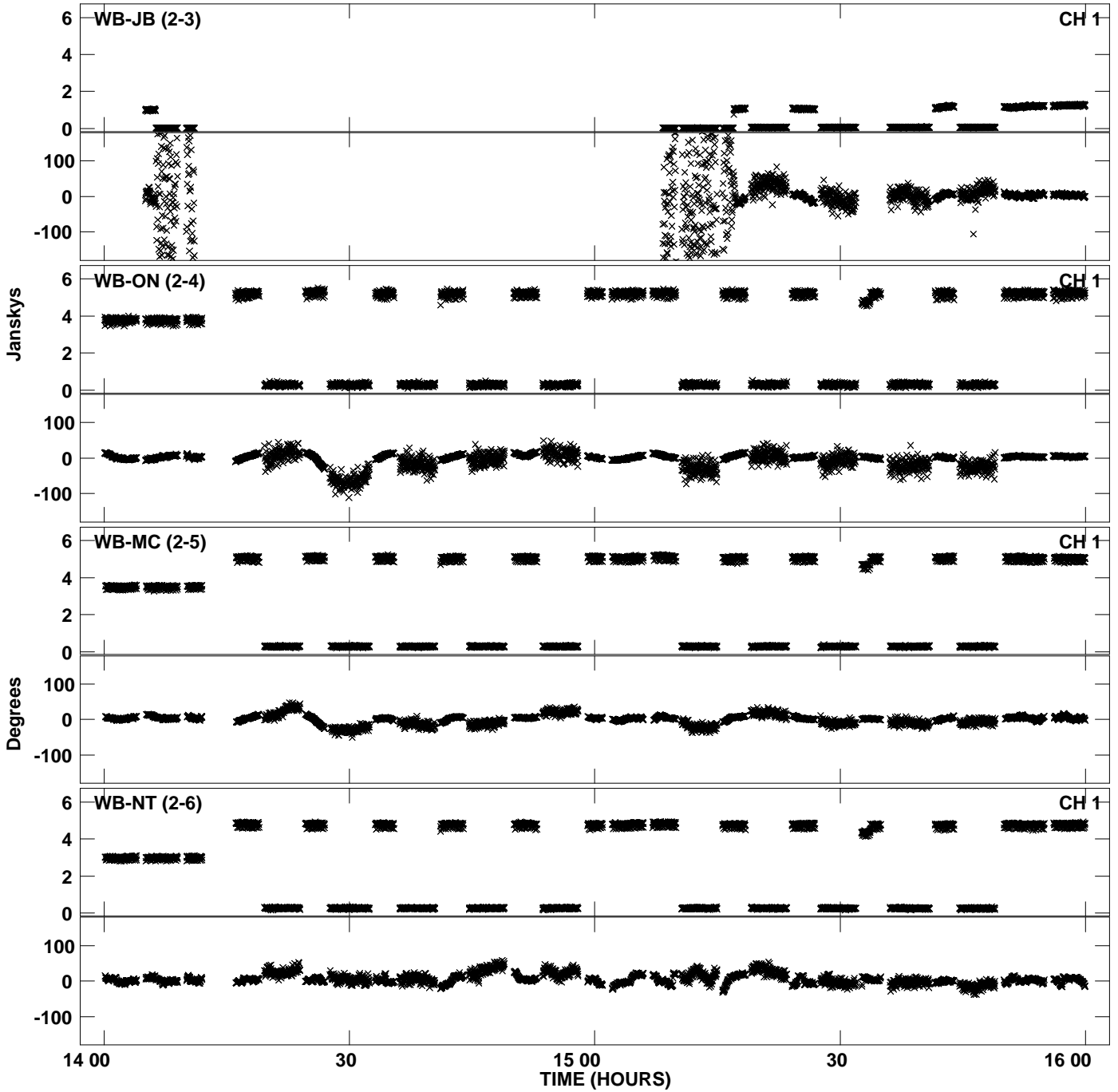
Plot file version 23 created 17-JUL-2013 14:43:29
Amplitude andPhase vs Time for N13C1.UVDATA.1 Vect aver. CL # 3
IF 8 CHAN 1 - 32 STK LL



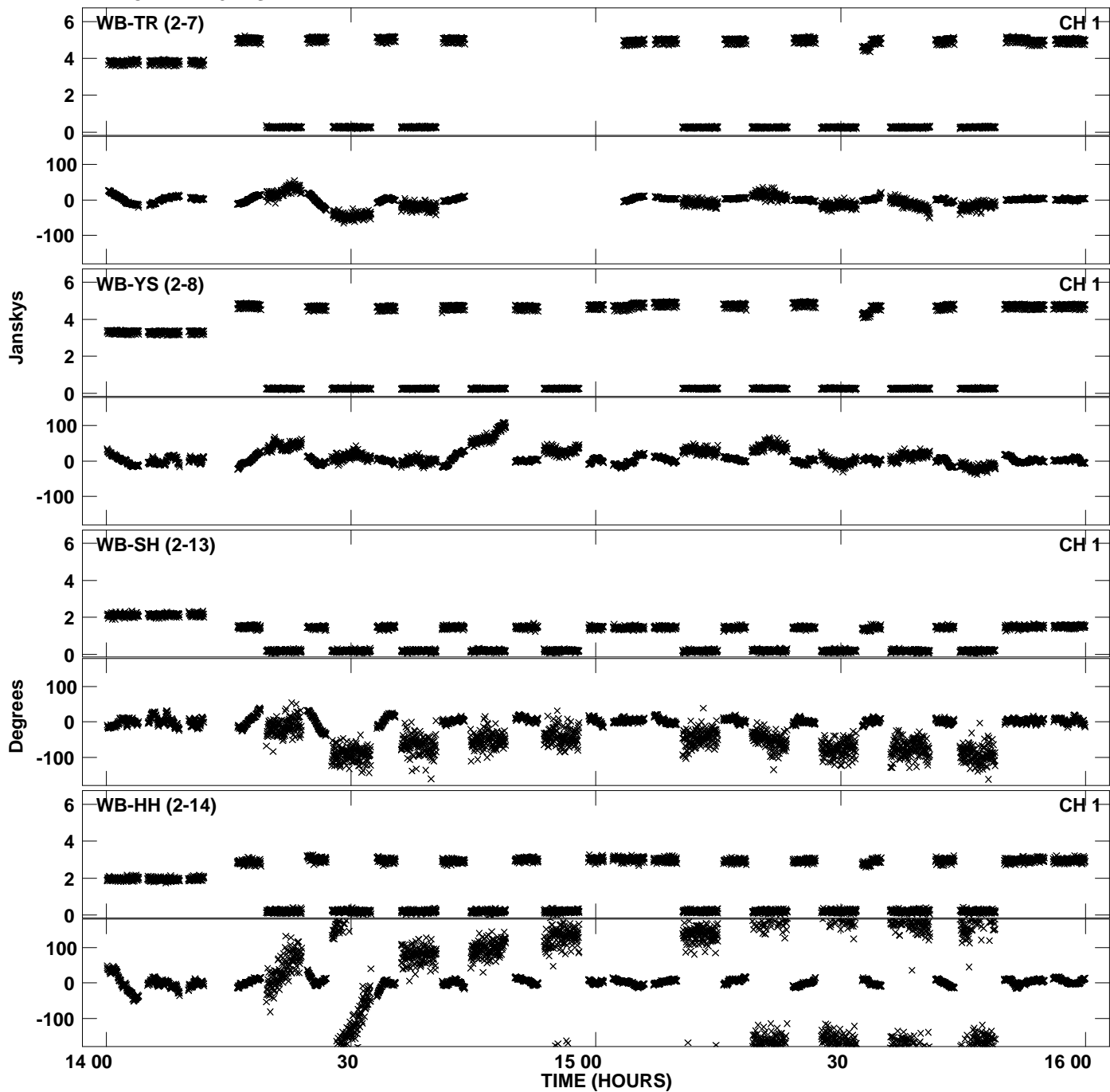
Plot file version 24 created 17-JUL-2013 14:43:29
Amplitude and Phase vs Time for N13C1.UVDATA.1 Vect aver. CL # 3
IF 8 CHAN 1 - 32 STK LL



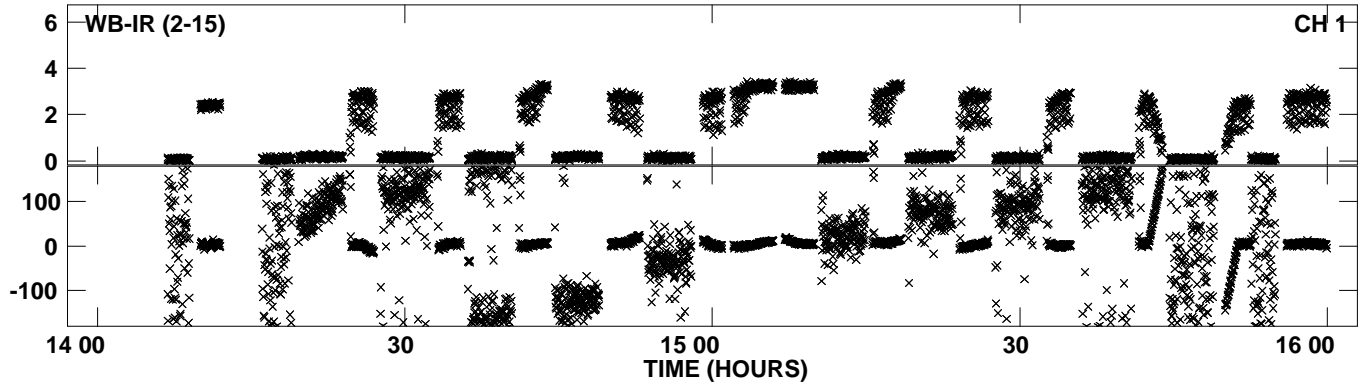
Plot file version 25 created 17-JUL-2013 14:43:33
Amplitude andPhase vs Time for N13C1.UVDATA.1 Vect aver. CL # 3
IF 1 CHAN 1 - 32 STK RR



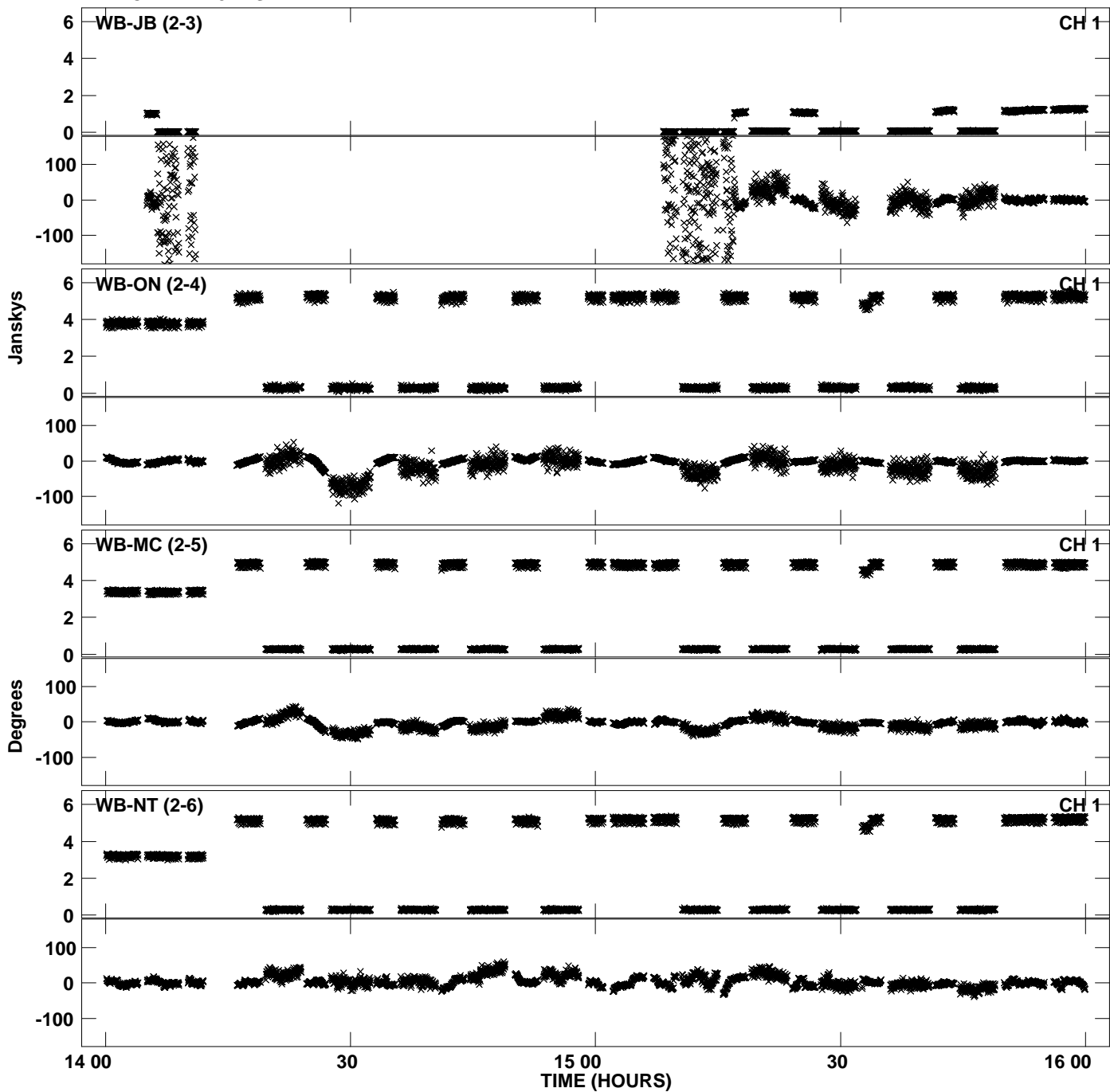
Plot file version 26 created 17-JUL-2013 14:43:33
Amplitude andPhase vs Time for N13C1.UVDATA.1 Vect aver. CL # 3
IF 1 CHAN 1 - 32 STK RR



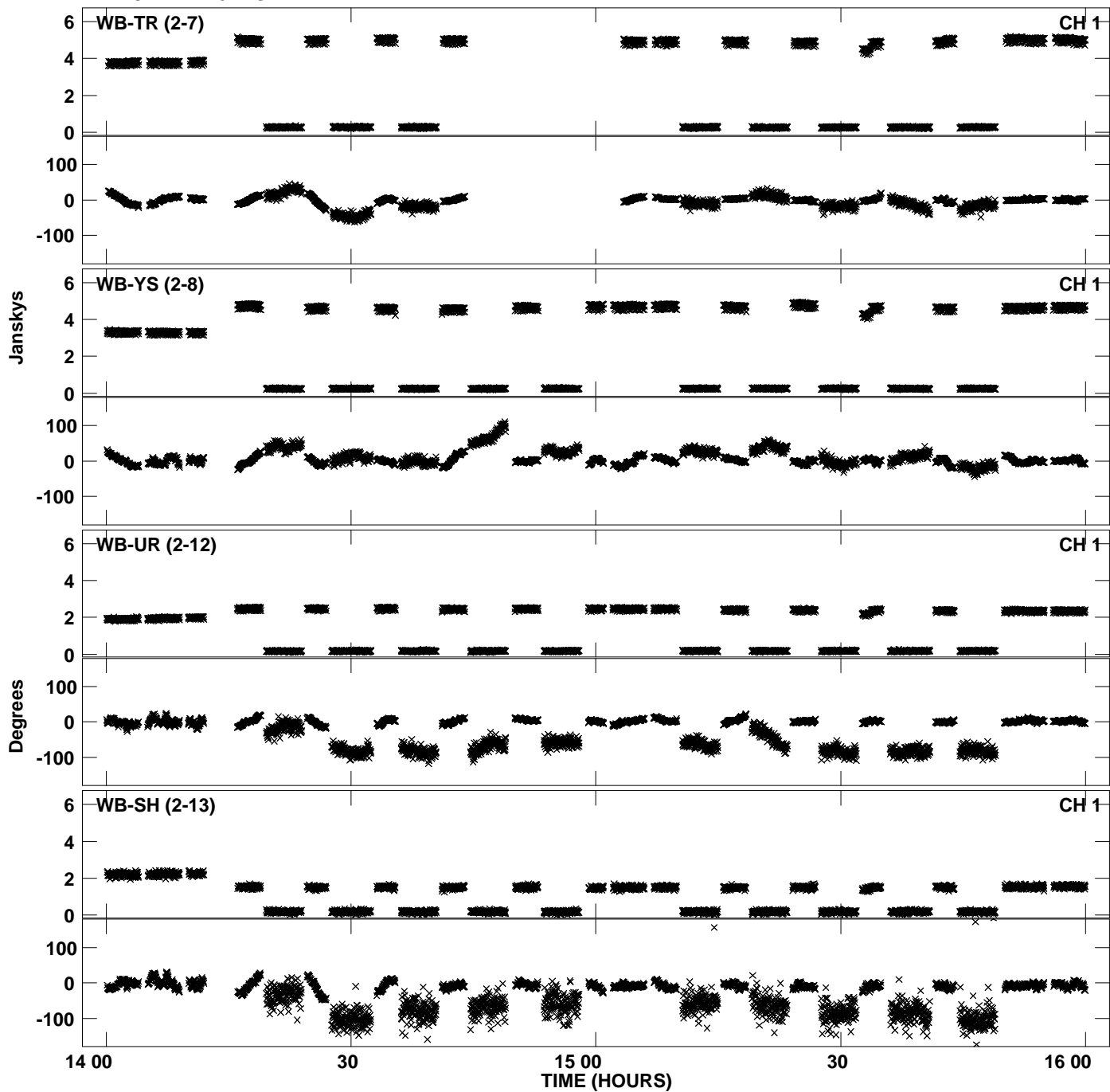
PLot file version 27 created 17-JUL-2013 14:43:33
Amplitude andPhase vs Time for N13C1.UVDATA.1 Vect aver. CL # 3
IF 1 CHAN 1 - 32 STK RR



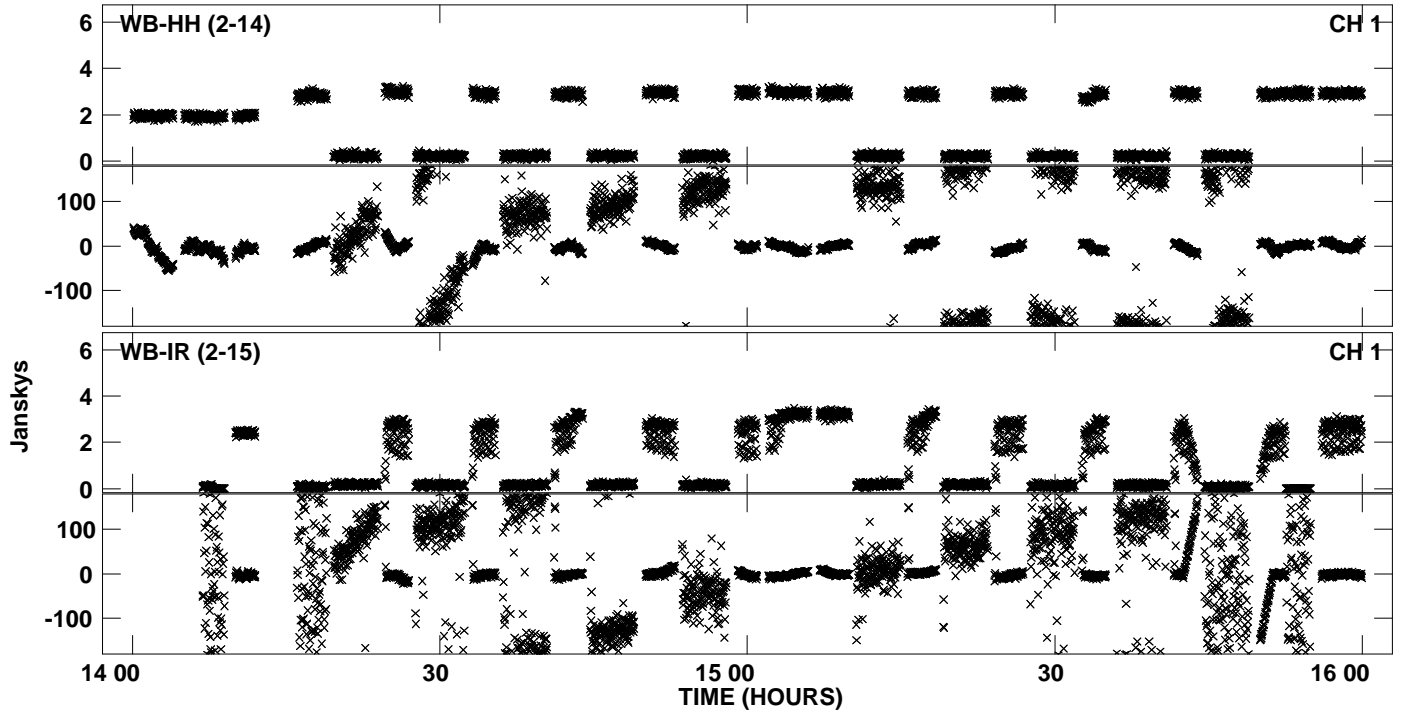
Plot file version 28 created 17-JUL-2013 14:43:36
Amplitude and Phase vs Time for N13C1.UVDATA.1 Vect aver. CL # 3
IF 2 CHAN 1 - 32 STK RR



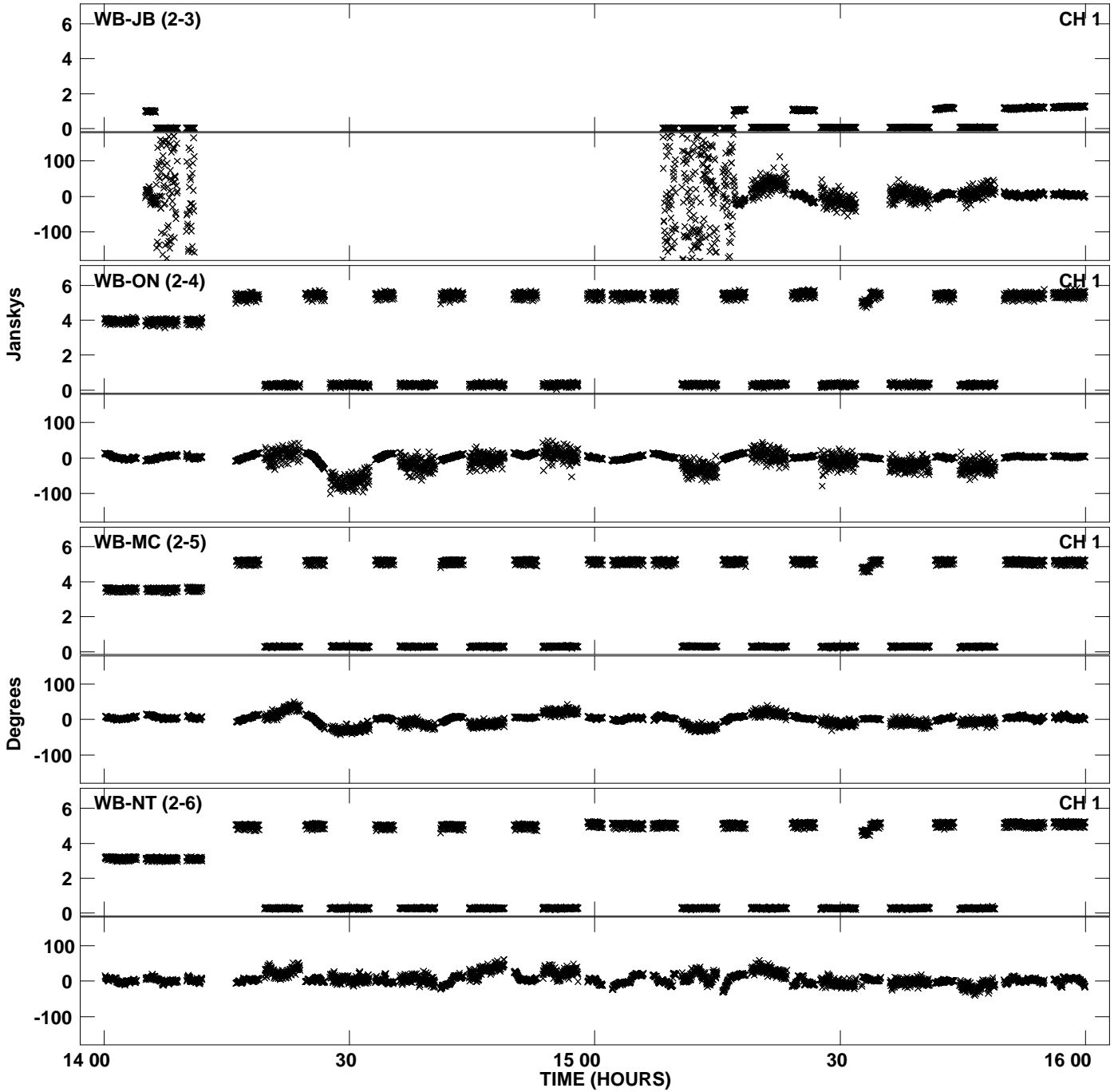
Plot file version 29 created 17-JUL-2013 14:43:36
Amplitude andPhase vs Time for N13C1.UVDATA.1 Vect aver. CL # 3
IF 2 CHAN 1 - 32 STK RR



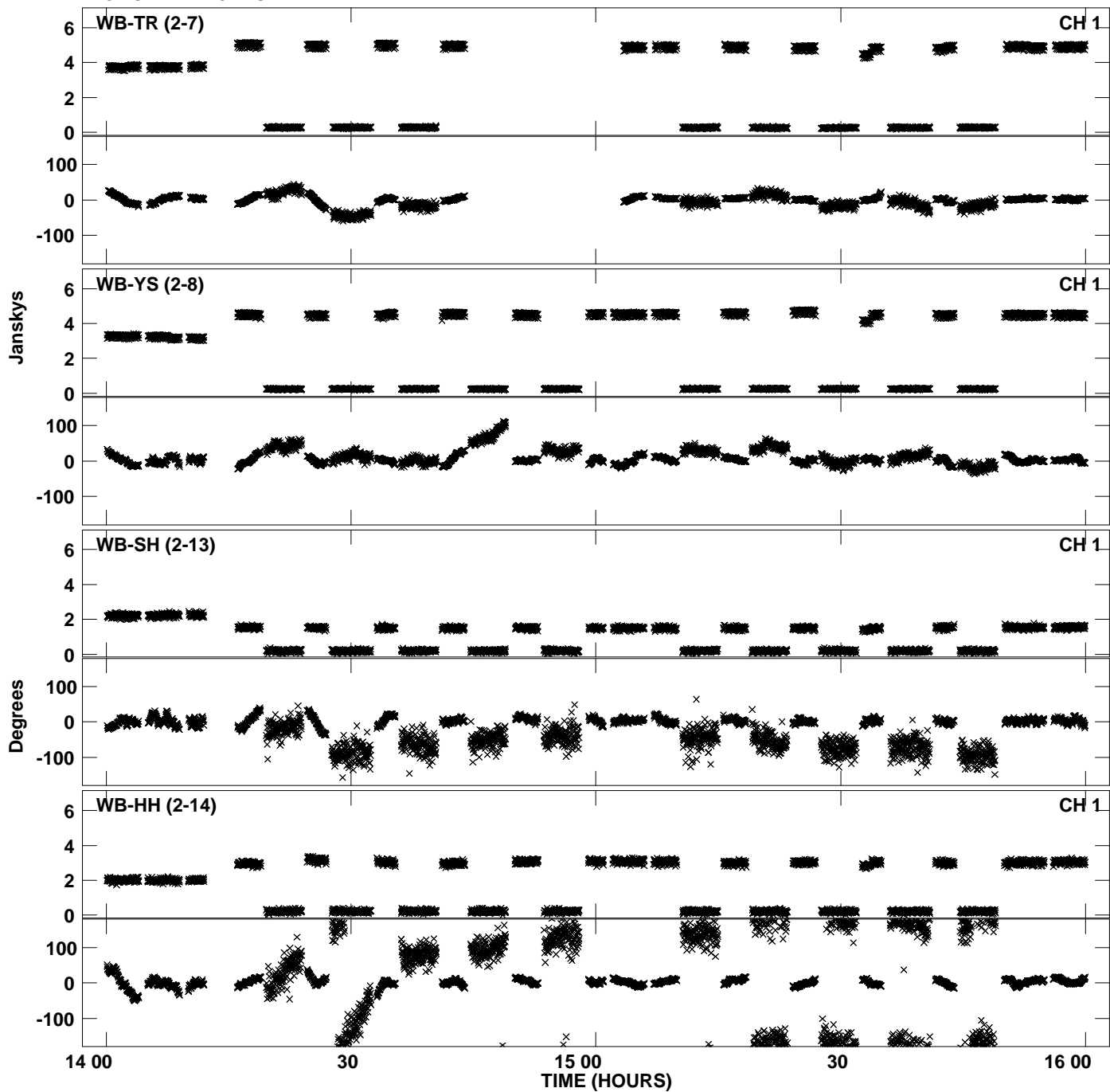
Plot file version 30 created 17-JUL-2013 14:43:36
Amplitude and Phase vs Time for N13C1.UVDATA.1 Vect aver. CL # 3
IF 2 CHAN 1 - 32 STK RR



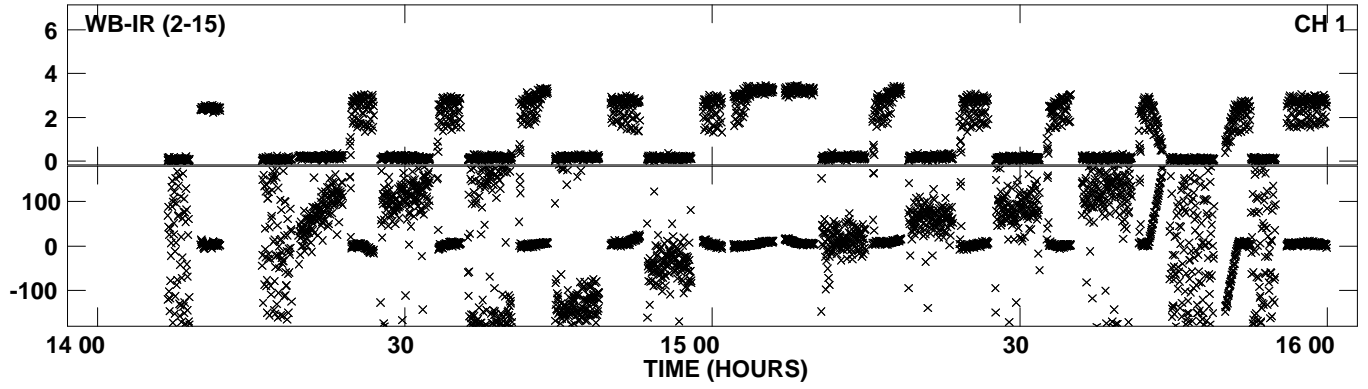
Plot file version 31 created 17-JUL-2013 14:43:39
Amplitude andPhase vs Time for N13C1.UVDATA.1 Vect aver. CL # 3
IF 3 CHAN 1 - 32 STK RR



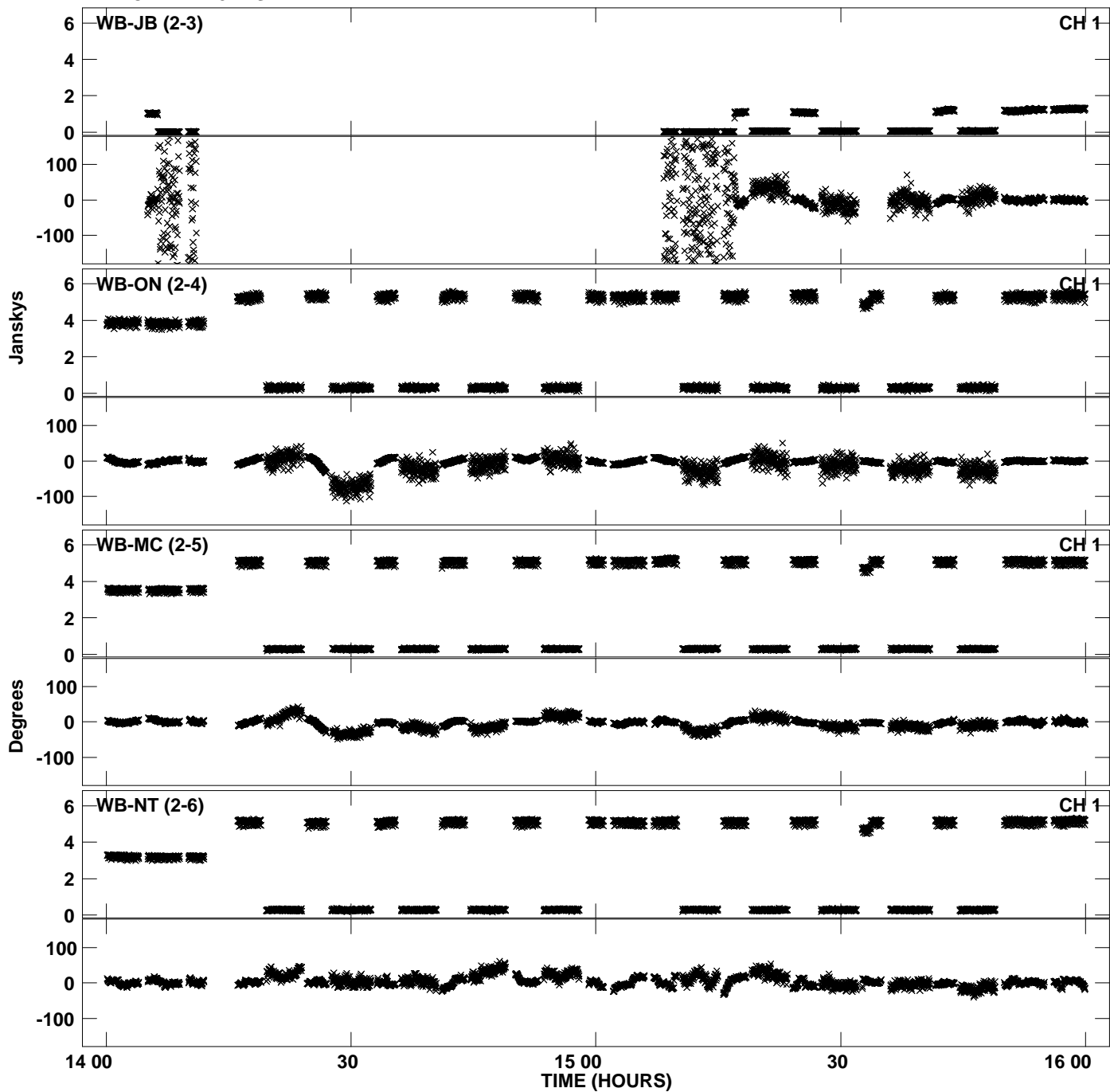
Plot file version 32 created 17-JUL-2013 14:43:39
Amplitude and Phase vs Time for N13C1.UVDATA.1 Vect aver. CL # 3
IF 3 CHAN 1 - 32 STK RR



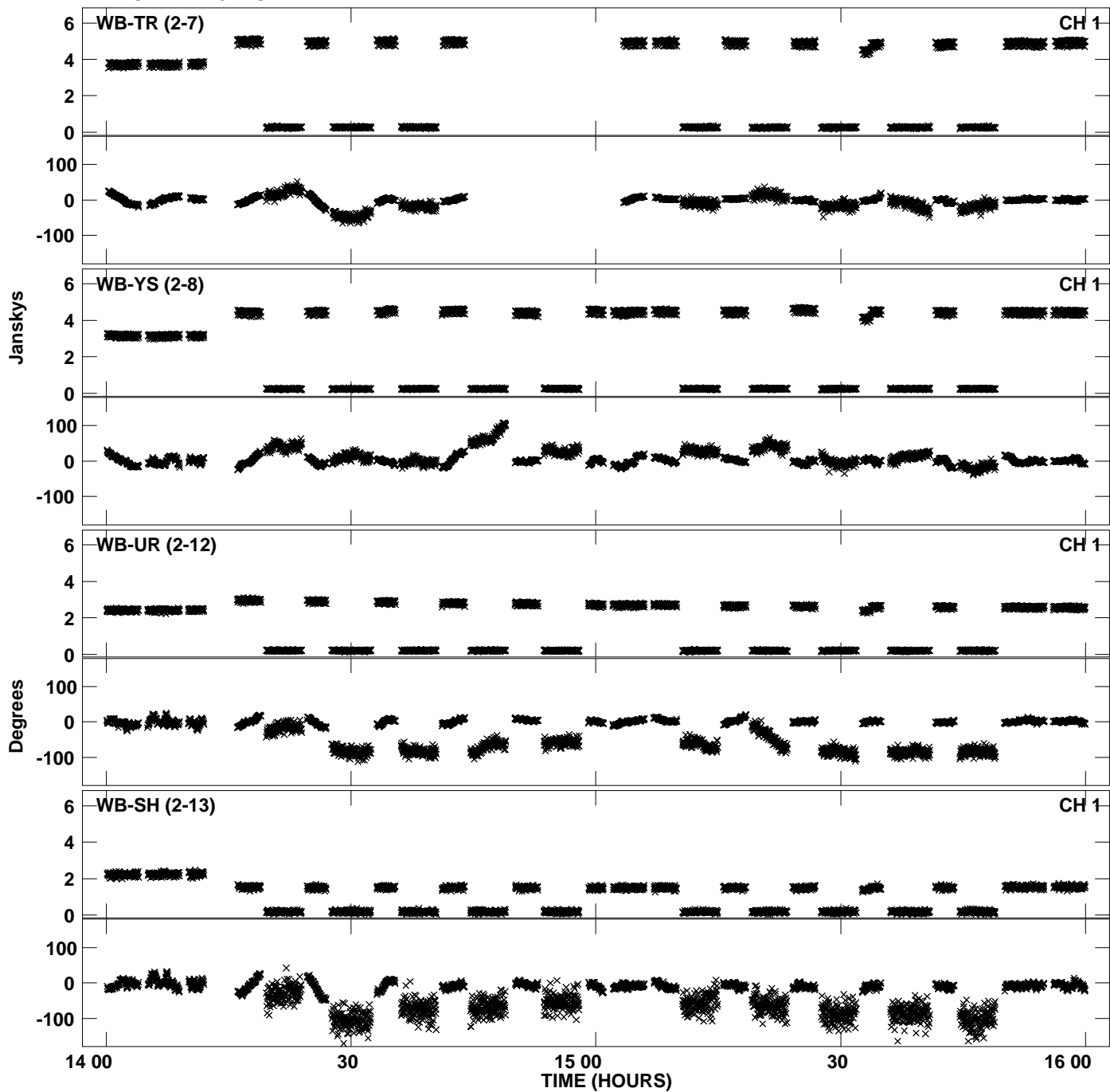
PLot file version 33 created 17-JUL-2013 14:43:39
Amplitude andPhase vs Time for N13C1.UVDATA.1 Vect aver. CL # 3
IF 3 CHAN 1 - 32 STK RR



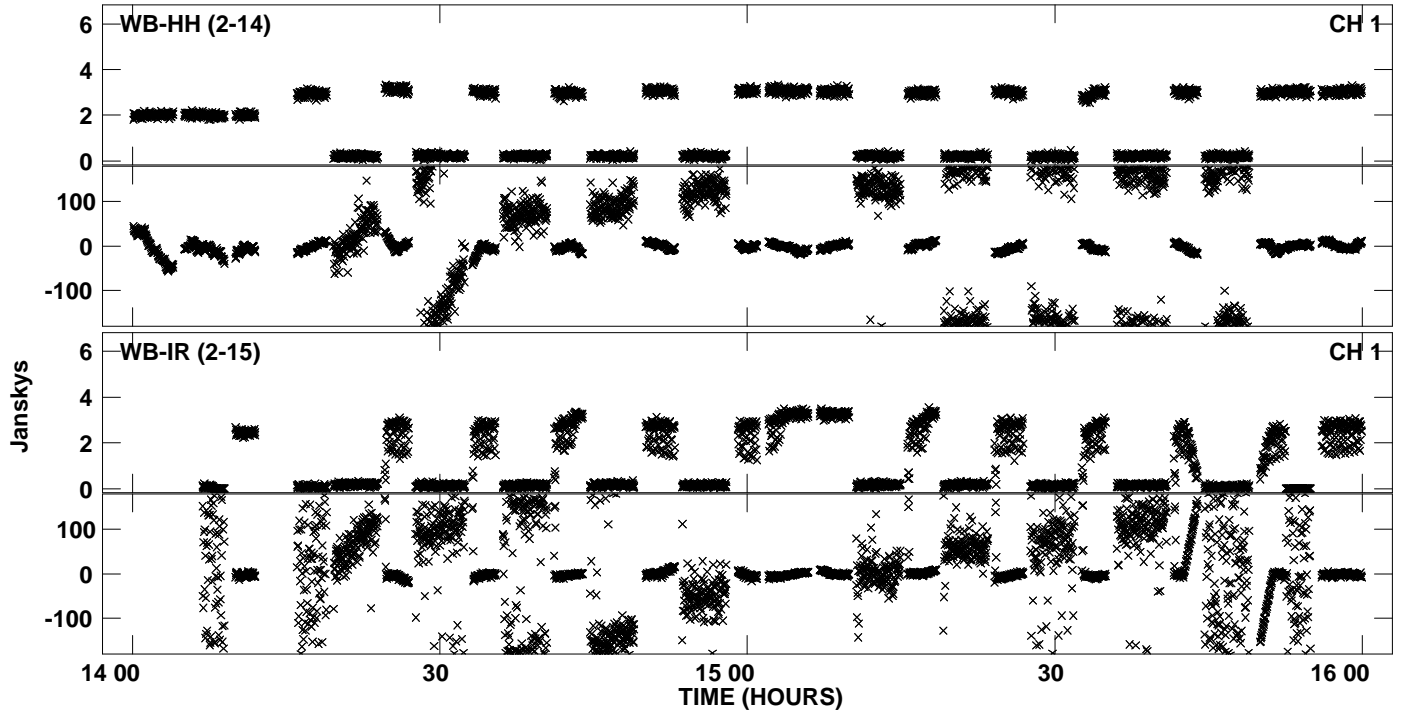
Plot file version 34 created 17-JUL-2013 14:43:43
Amplitude and Phase vs Time for N13C1.UVDATA.1 Vect aver. CL # 3
IF 4 CHAN 1 - 32 STK RR



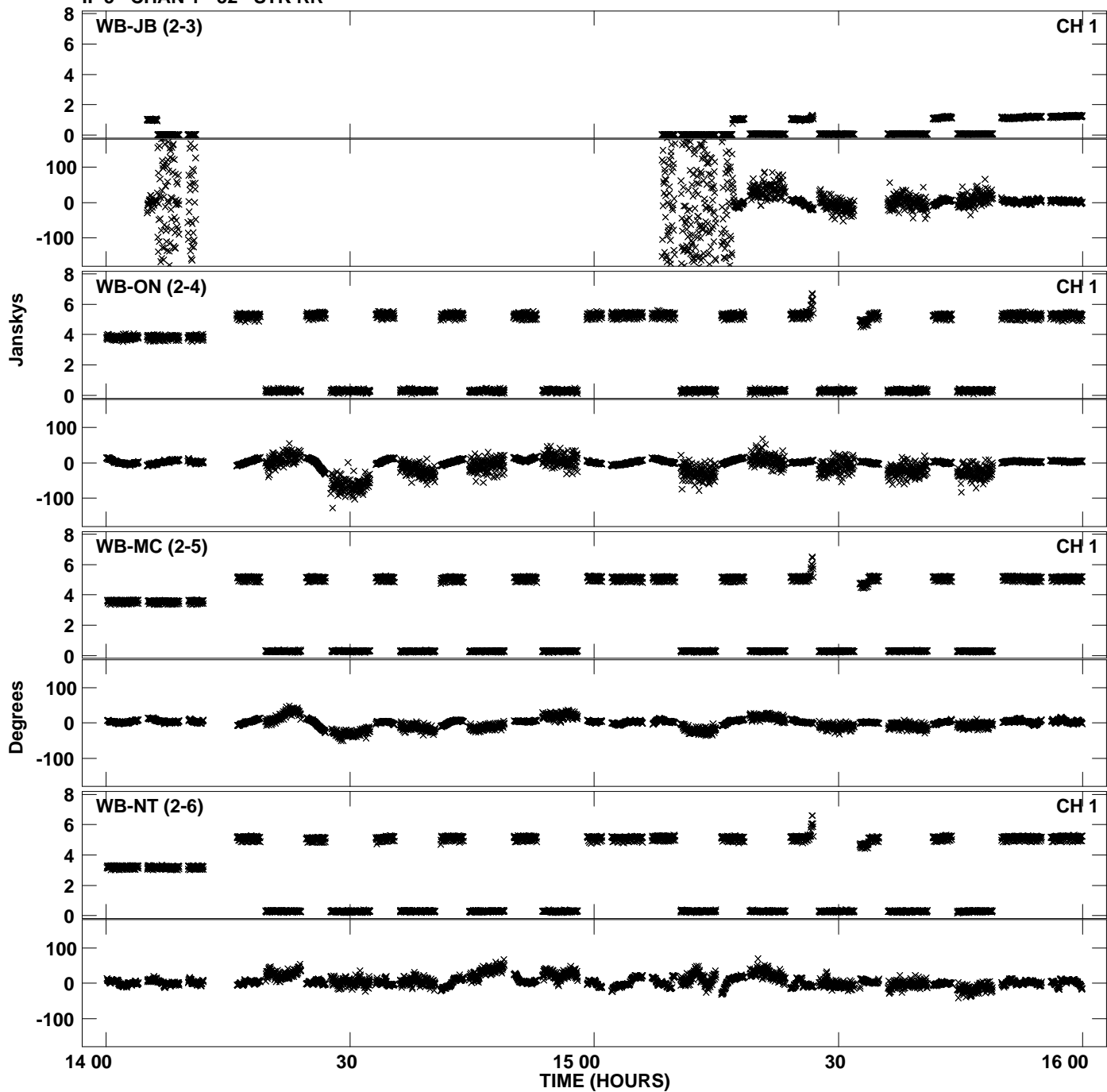
Plot file version 35 created 17-JUL-2013 14:43:43
Amplitude andPhase vs Time for N13C1.UVDATA.1 Vect aver. CL # 3
IF 4 CHAN 1 - 32 STK RR



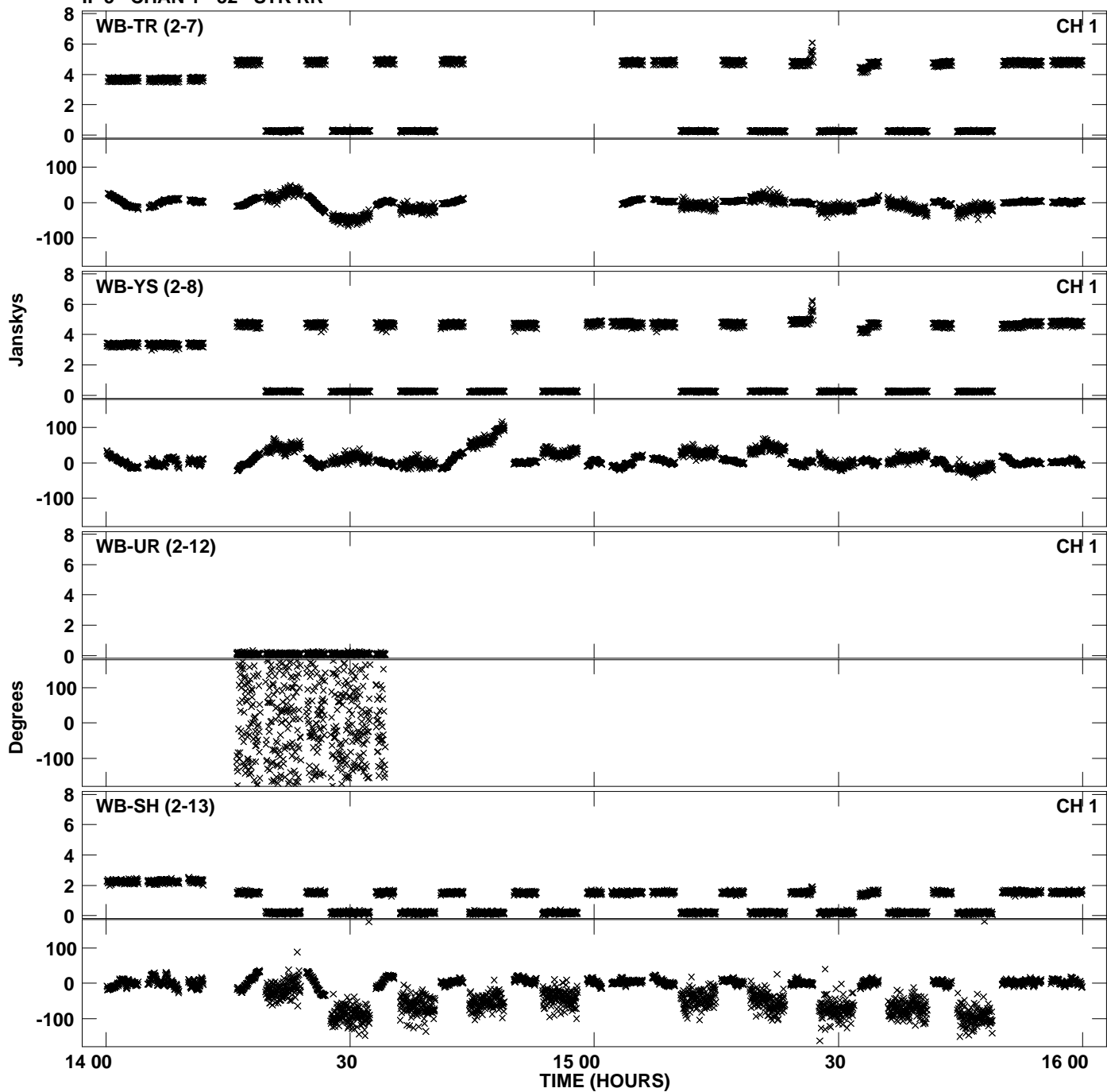
Plot file version 36 created 17-JUL-2013 14:43:43
Amplitude and Phase vs Time for N13C1.UVDATA.1 Vect aver. CL # 3
IF 4 CHAN 1 - 32 STK RR



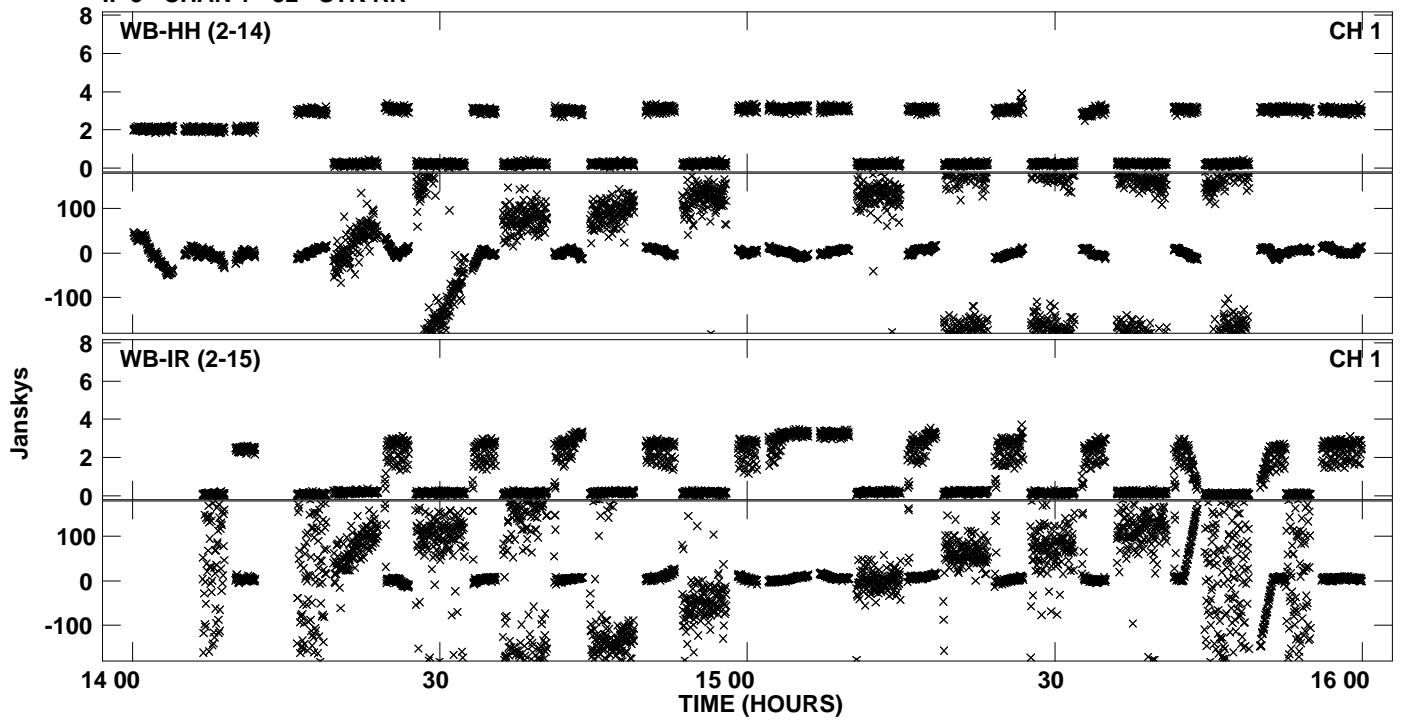
Plot file version 37 created 17-JUL-2013 14:43:46
Amplitude andPhase vs Time for N13C1.UVDATA.1 Vect aver. CL # 3
IF 5 CHAN 1 - 32 STK RR



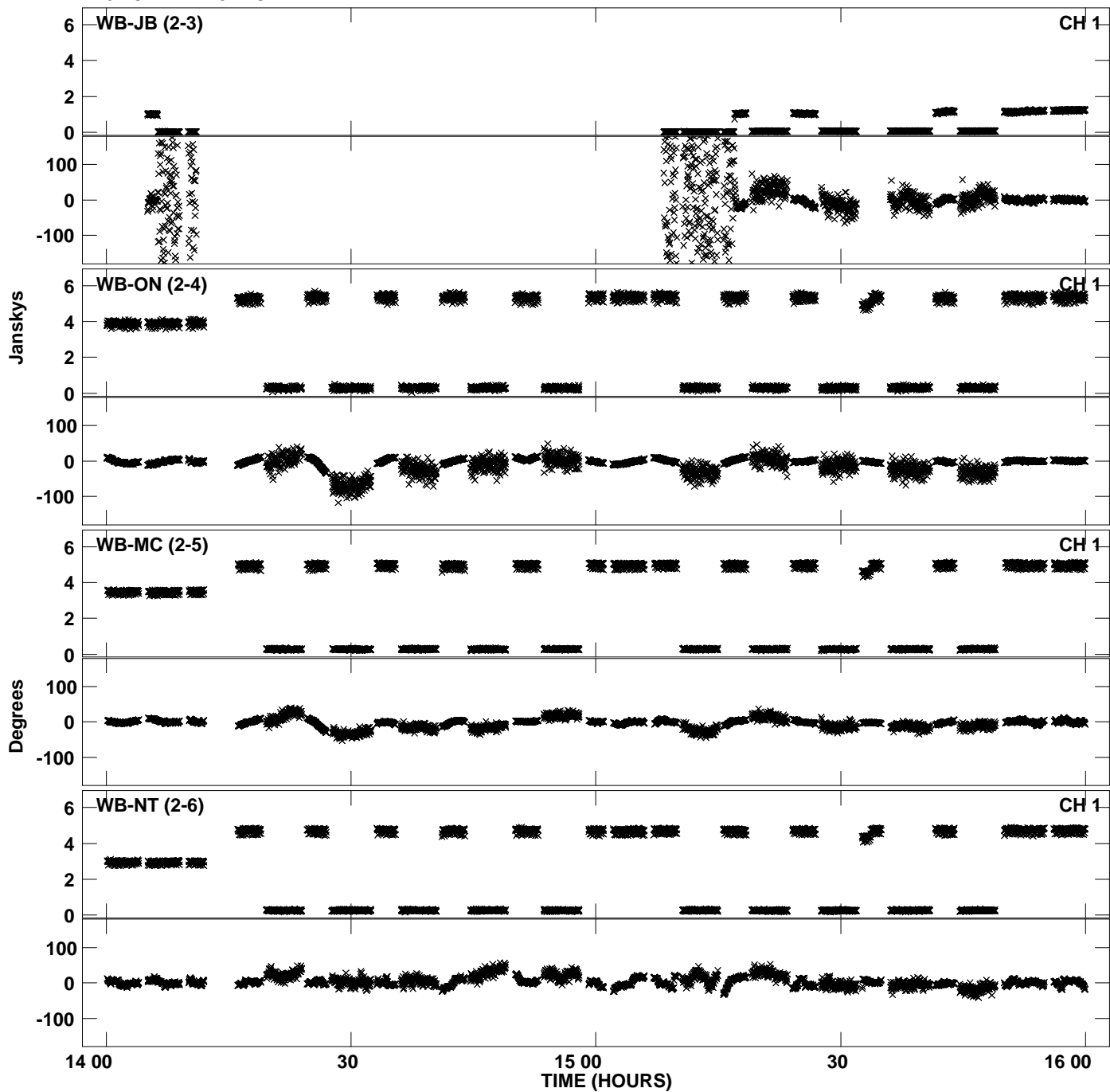
Plot file version 38 created 17-JUL-2013 14:43:46
Amplitude andPhase vs Time for N13C1.UVDATA.1 Vect aver. CL # 3
IF 5 CHAN 1 - 32 STK RR



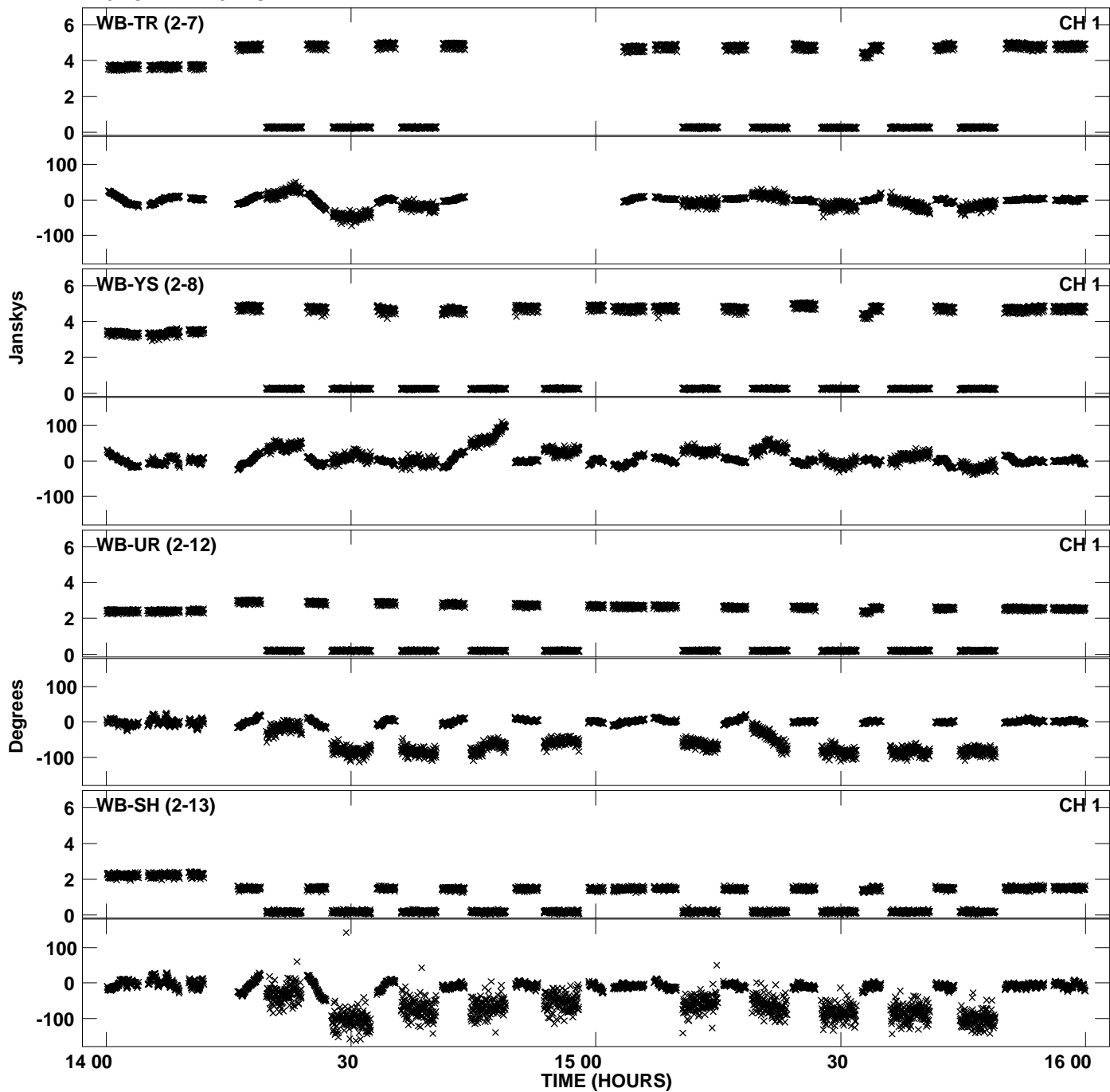
Plot file version 39 created 17-JUL-2013 14:43:46
Amplitude and Phase vs Time for N13C1.UVDATA.1 Vect aver. CL # 3
IF 5 CHAN 1 - 32 STK RR



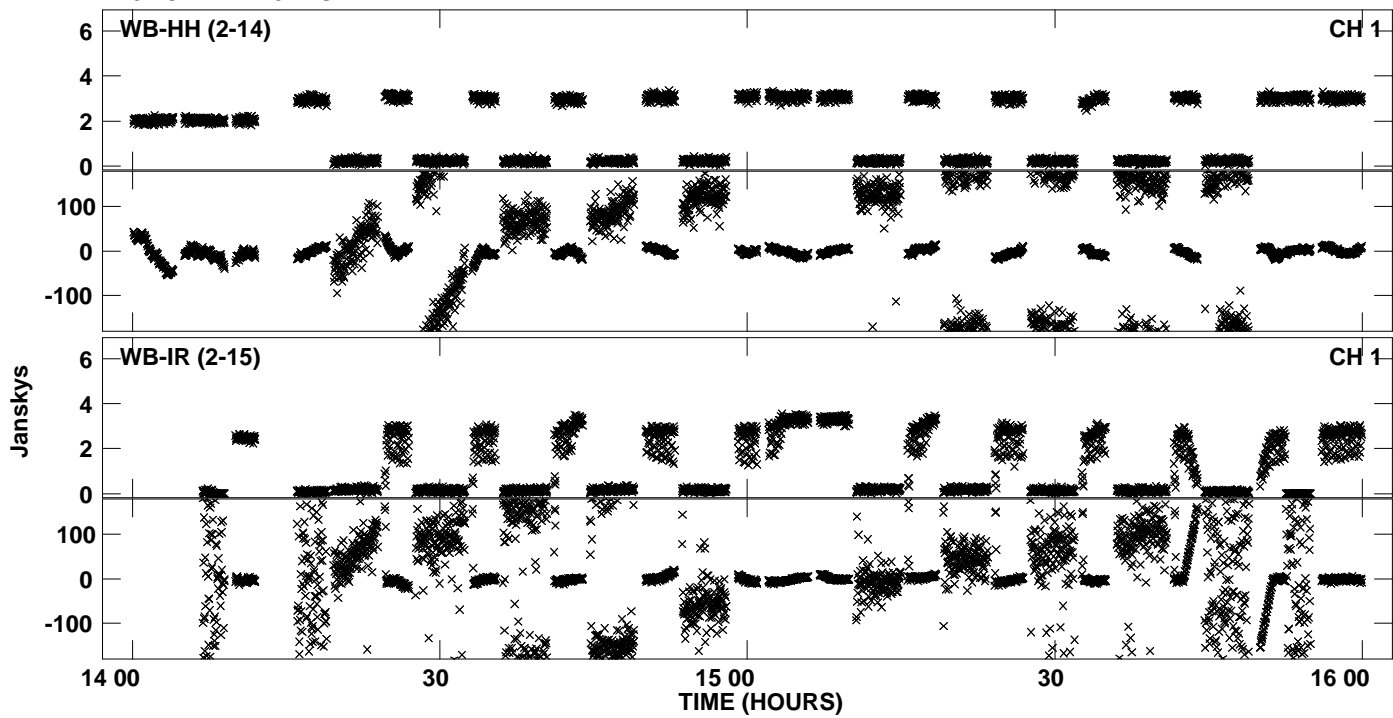
Plot file version 40 created 17-JUL-2013 14:43:49
Amplitude andPhase vs Time for N13C1.UVDATA.1 Vect aver. CL # 3
IF 6 CHAN 1 - 32 STK RR



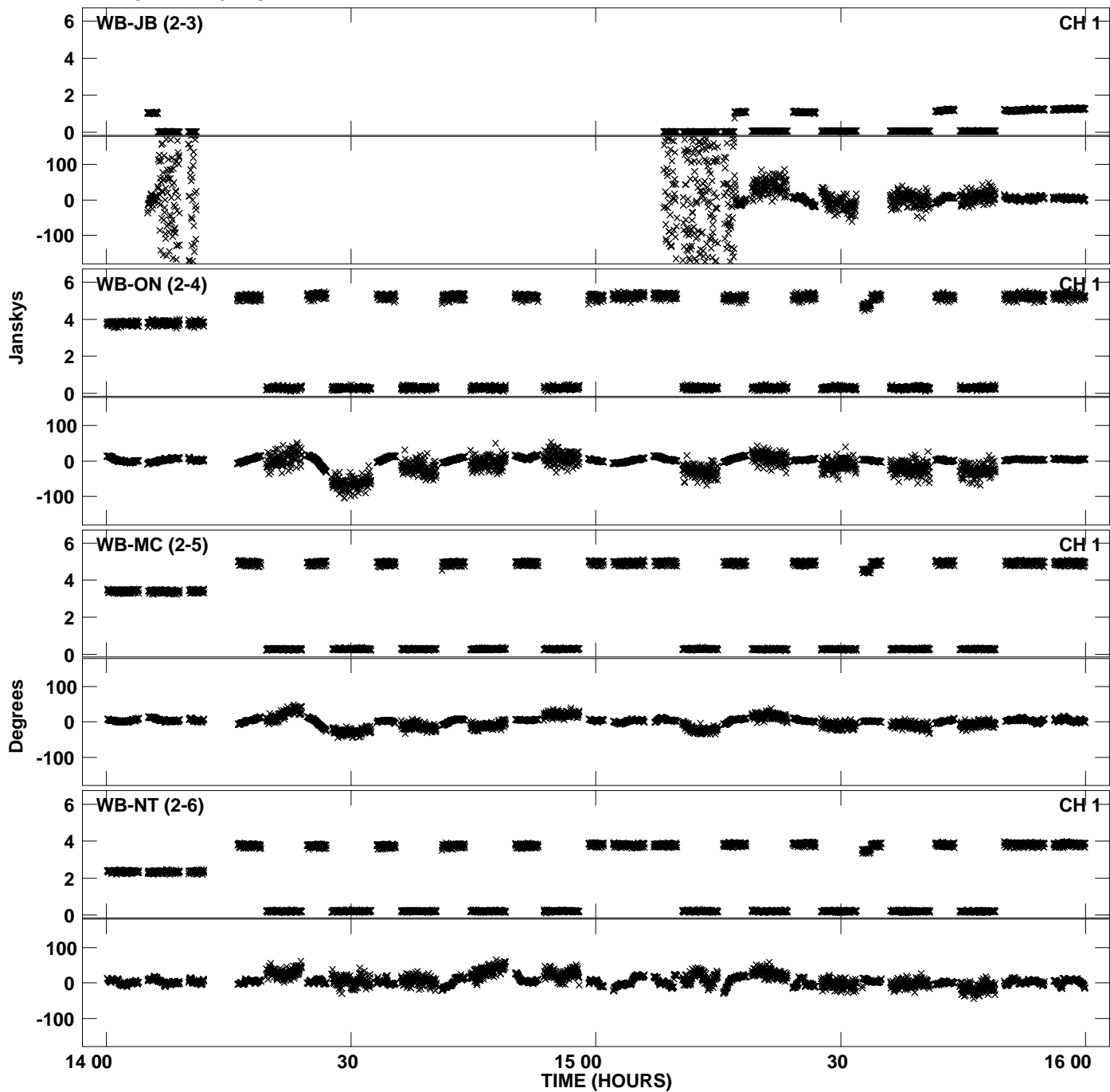
Plot file version 41 created 17-JUL-2013 14:43:49
Amplitude and Phase vs Time for N13C1.UVDATA.1 Vect aver. CL # 3
IF 6 CHAN 1 - 32 STK RR



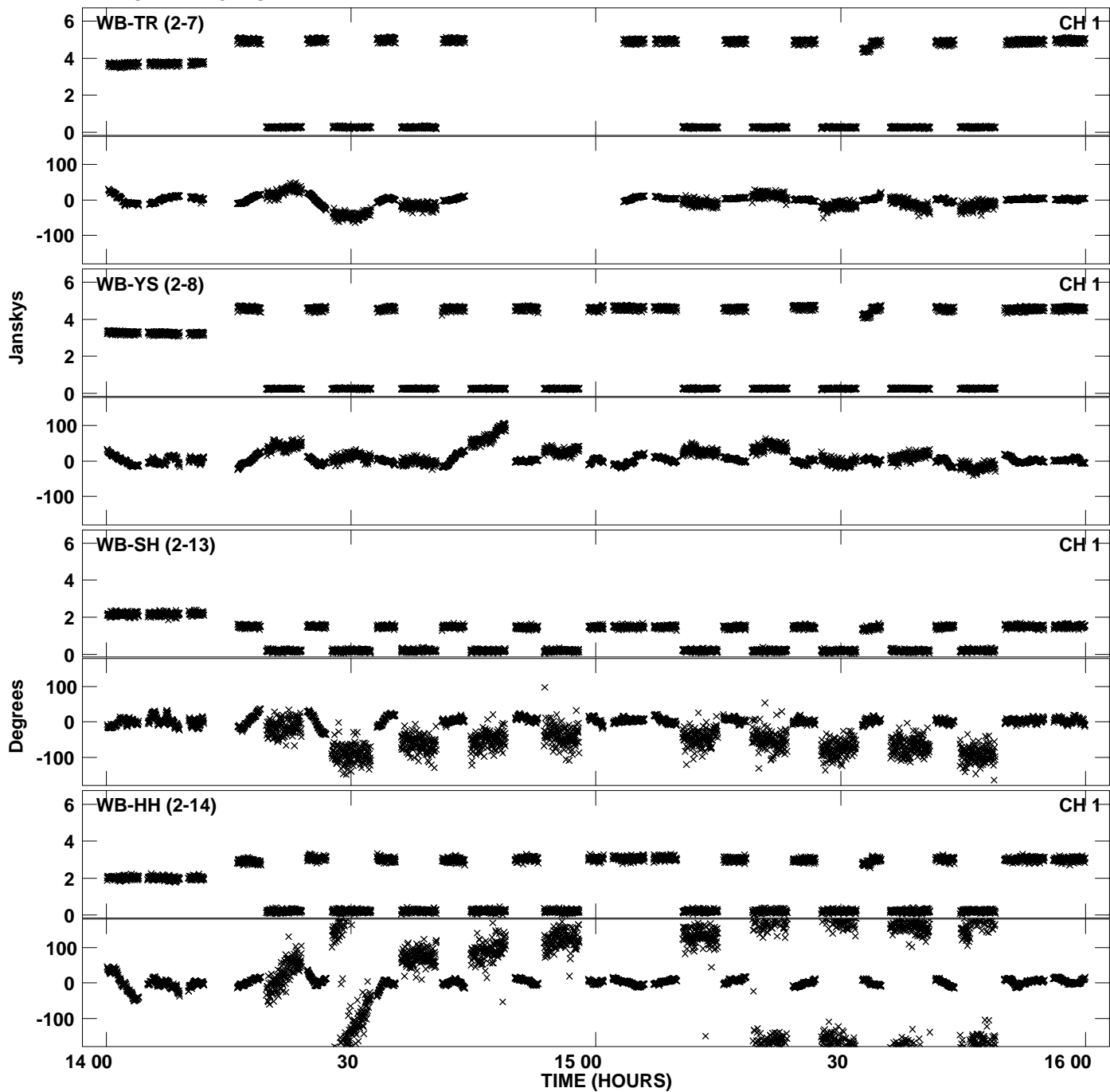
Plot file version 42 created 17-JUL-2013 14:43:49
Amplitude and Phase vs Time for N13C1.UVDATA.1 Vect aver. CL # 3
IF 6 CHAN 1 - 32 STK RR



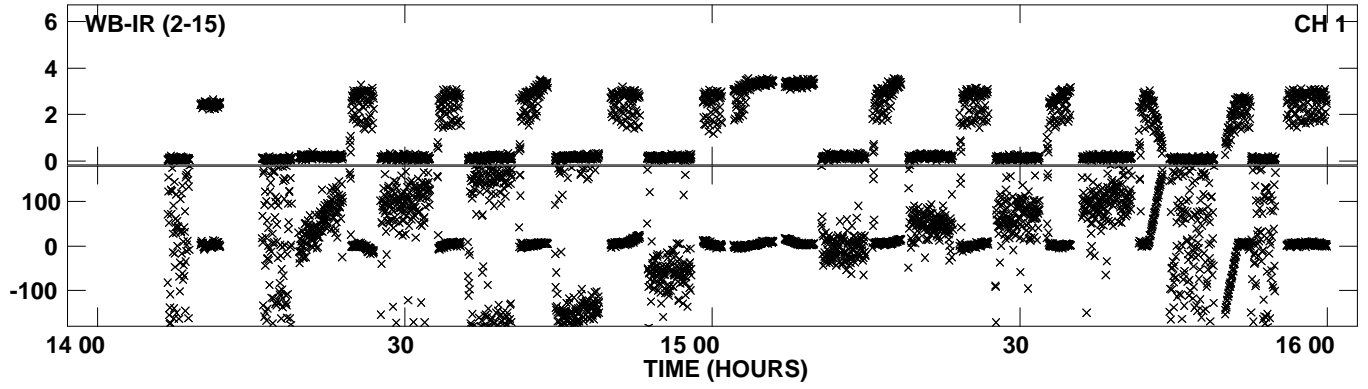
Plot file version 43 created 17-JUL-2013 14:43:53
Amplitude andPhase vs Time for N13C1.UVDATA.1 Vect aver. CL # 3
IF 7 CHAN 1 - 32 STK RR



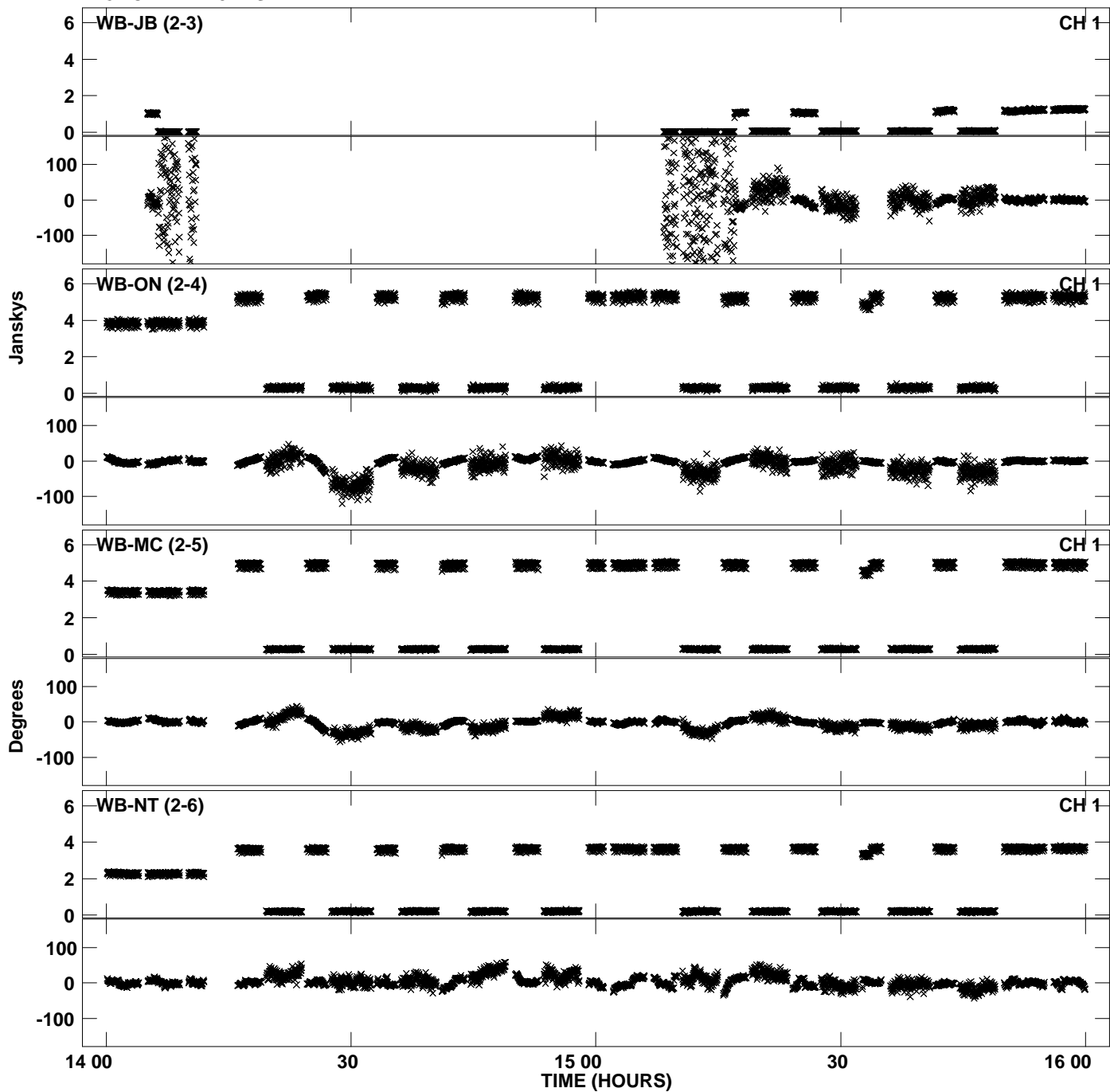
Plot file version 44 created 17-JUL-2013 14:43:53
Amplitude andPhase vs Time for N13C1.UVDATA.1 Vect aver. CL # 3
IF 7 CHAN 1 - 32 STK RR



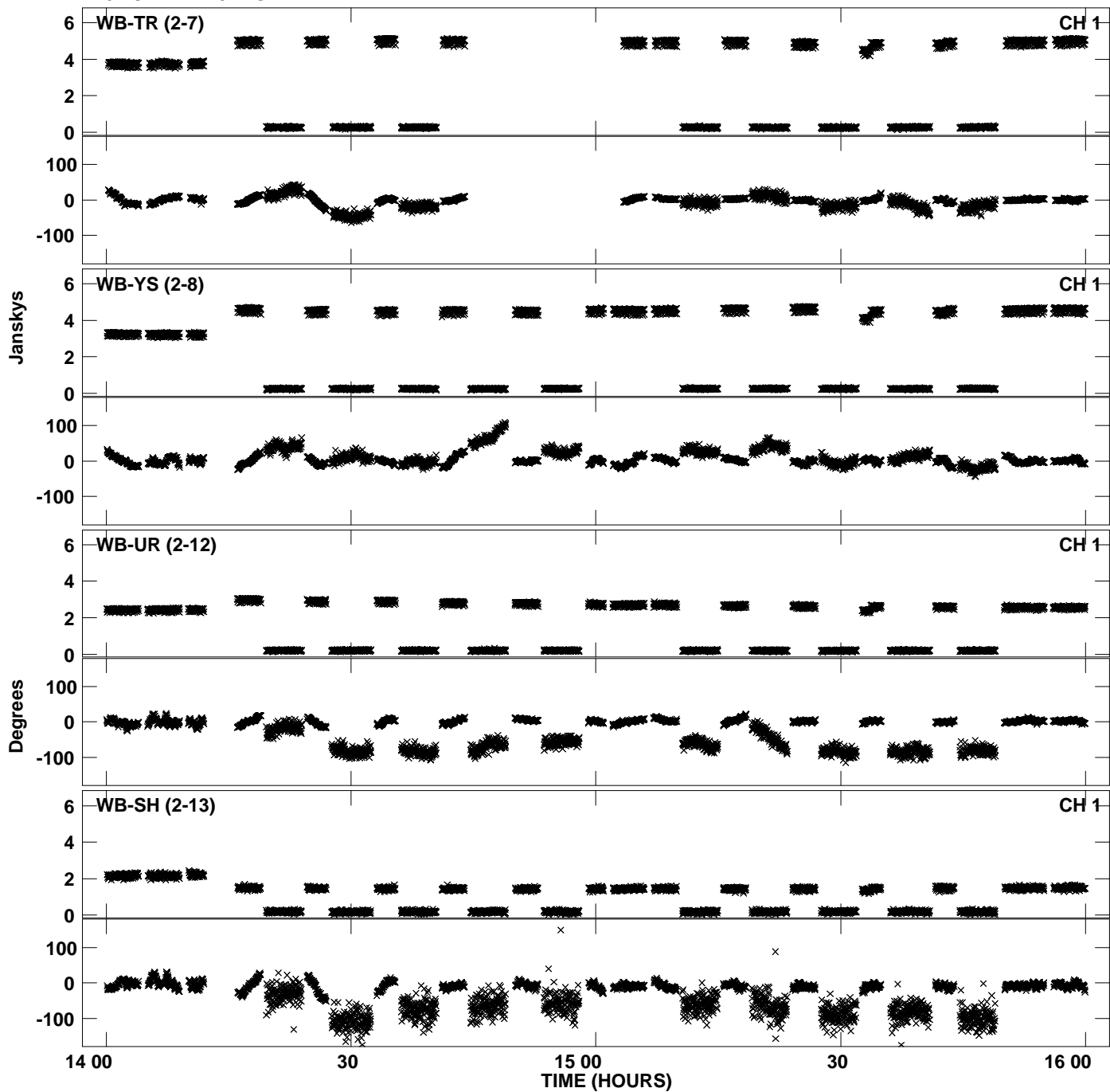
Plot file version 45 created 17-JUL-2013 14:43:53
Amplitude andPhase vs Time for N13C1.UVDATA.1 Vect aver. CL # 3
IF 7 CHAN 1 - 32 STK RR



Plot file version 46 created 17-JUL-2013 14:43:56
Amplitude andPhase vs Time for N13C1.UVDATA.1 Vect aver. CL # 3
IF 8 CHAN 1 - 32 STK RR



Plot file version 47 created 17-JUL-2013 14:43:56
Amplitude andPhase vs Time for N13C1.UVDATA.1 Vect aver. CL # 3
IF 8 CHAN 1 - 32 STK RR



Plot file version 48 created 17-JUL-2013 14:43:56
Amplitude and Phase vs Time for N13C1.UVDATA.1 Vect aver. CL # 3
IF 8 CHAN 1 - 32 STK RR

