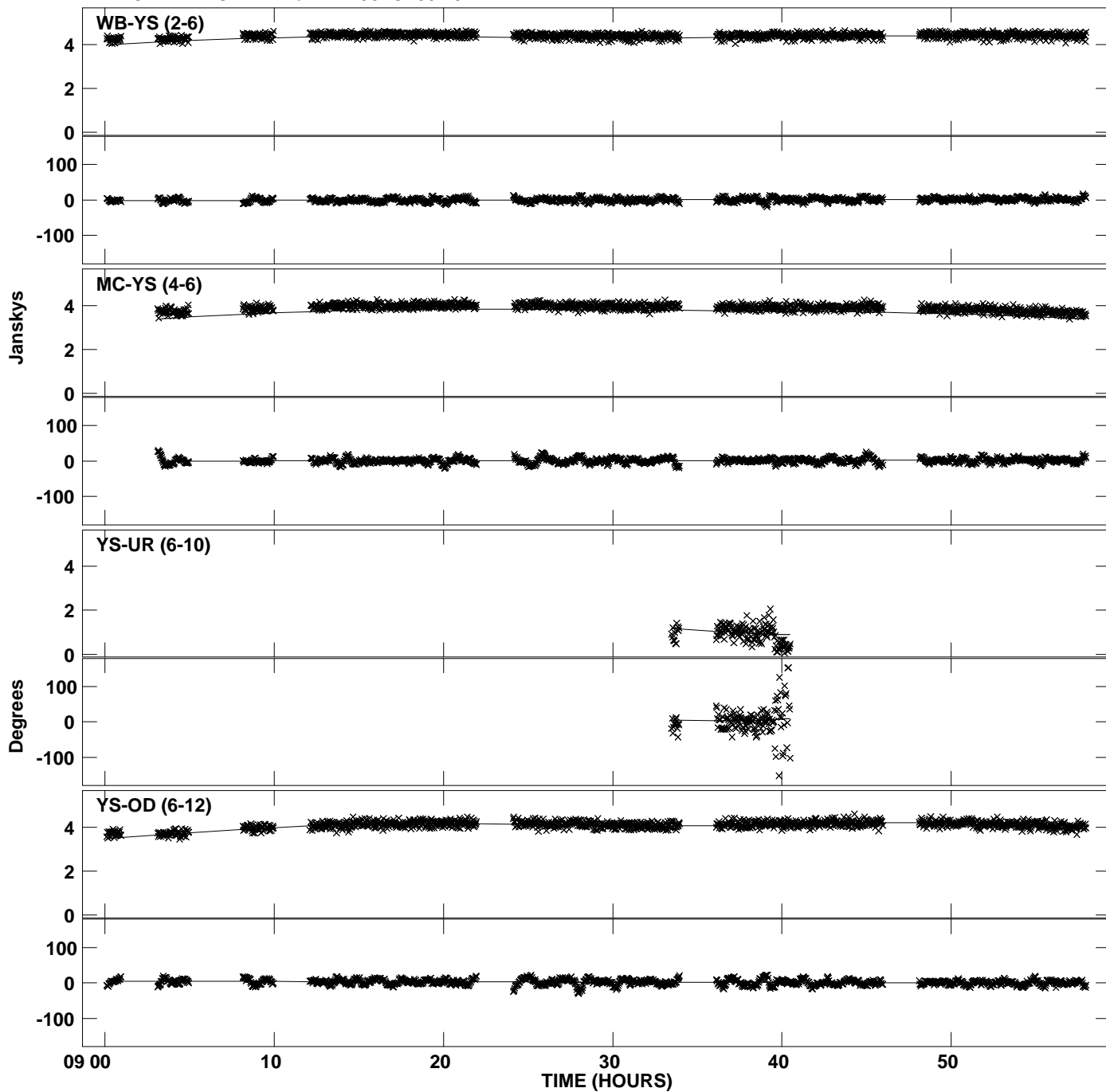
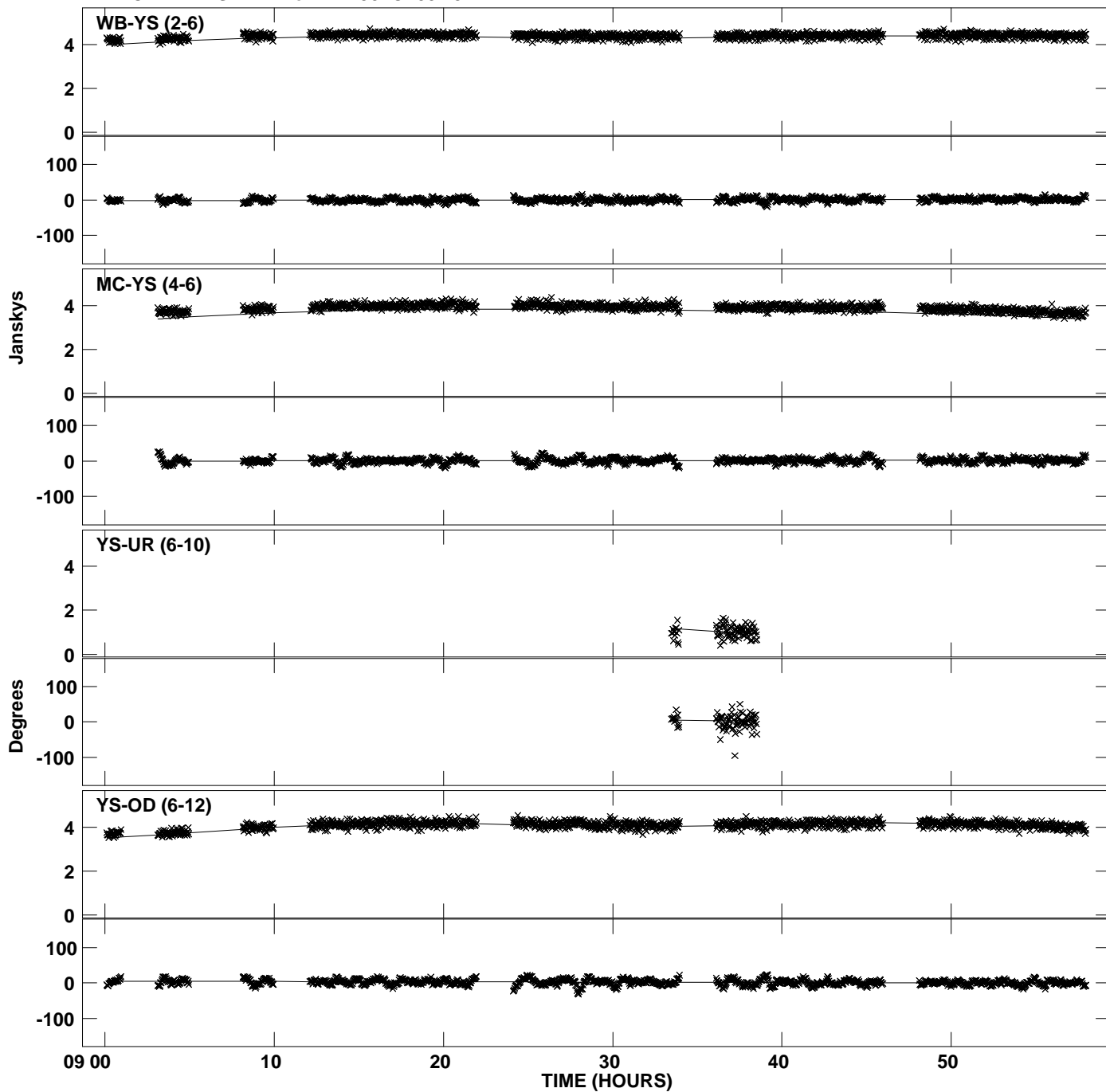


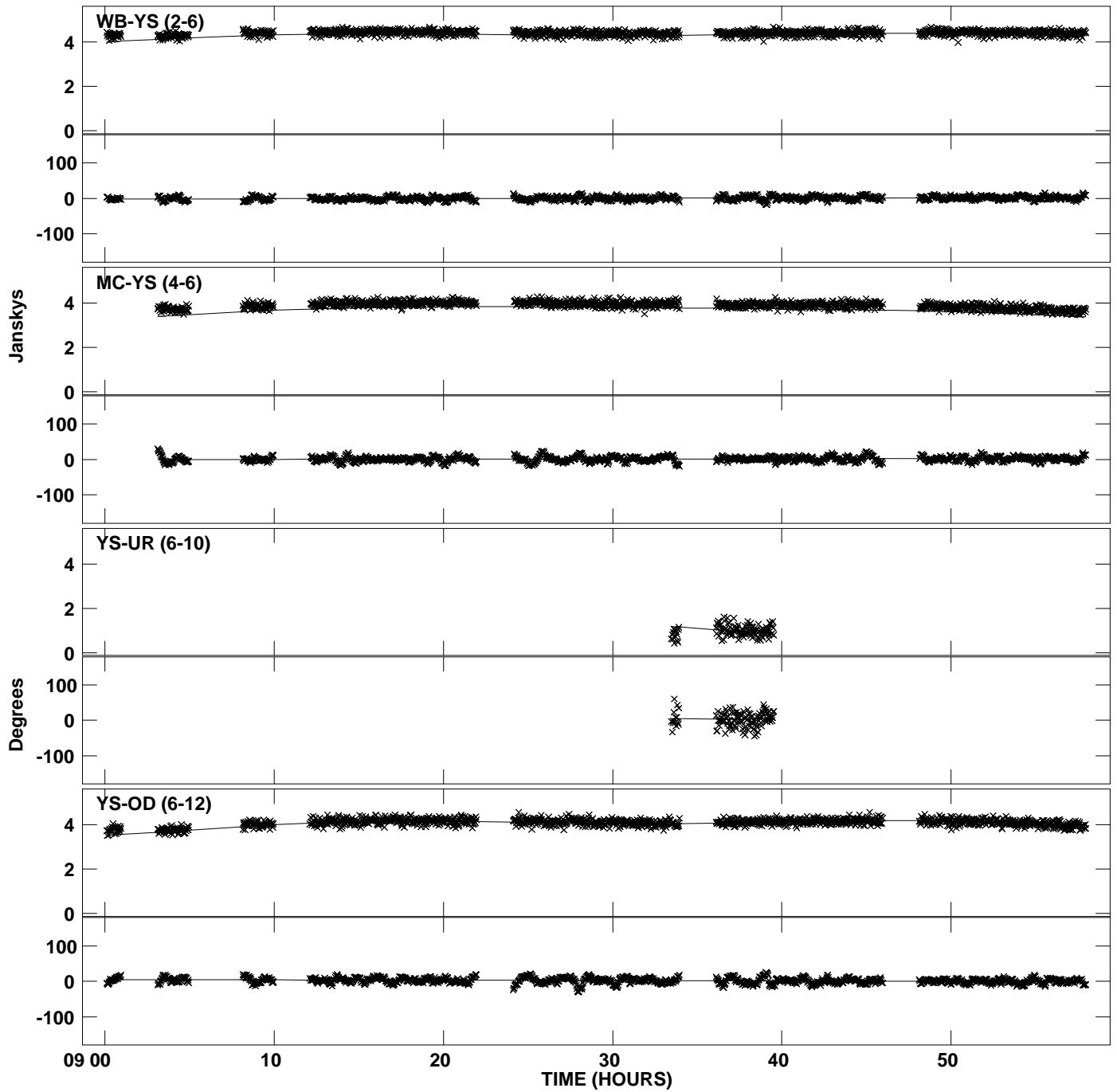
PLot file version 1 created 20-SEP-2013 10:31:33
Amplitude andPhase vs Time for DA193.MULTI.1 CL # 3
IF 1 CHAN 1 STK LL of DA193.ICL001.3



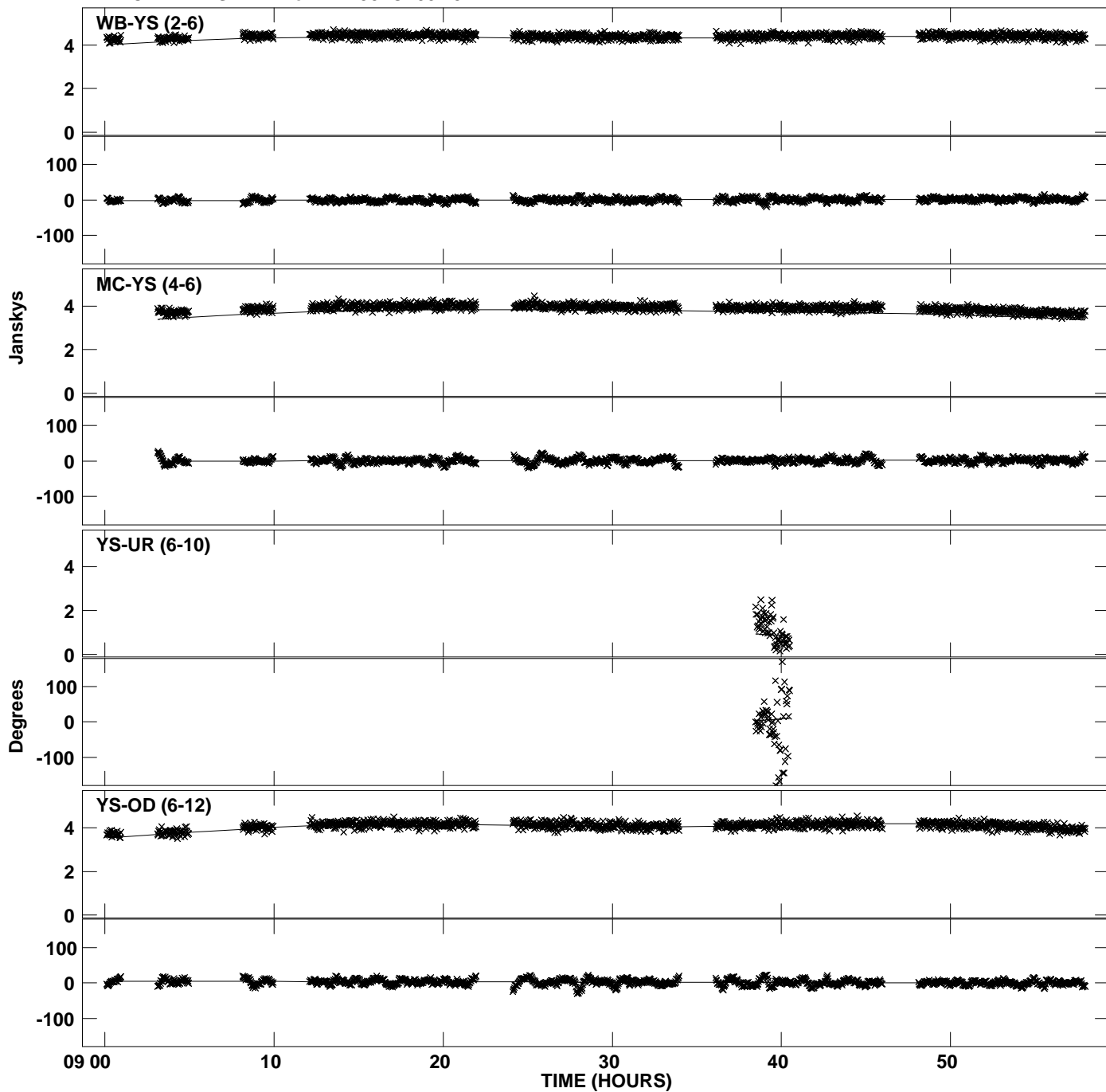
PLot file version 2 created 20-SEP-2013 10:31:33
Amplitude andPhase vs Time for DA193.MULTI.1 CL # 3
IF 2 CHAN 1 STK LL of DA193.ICL001.3



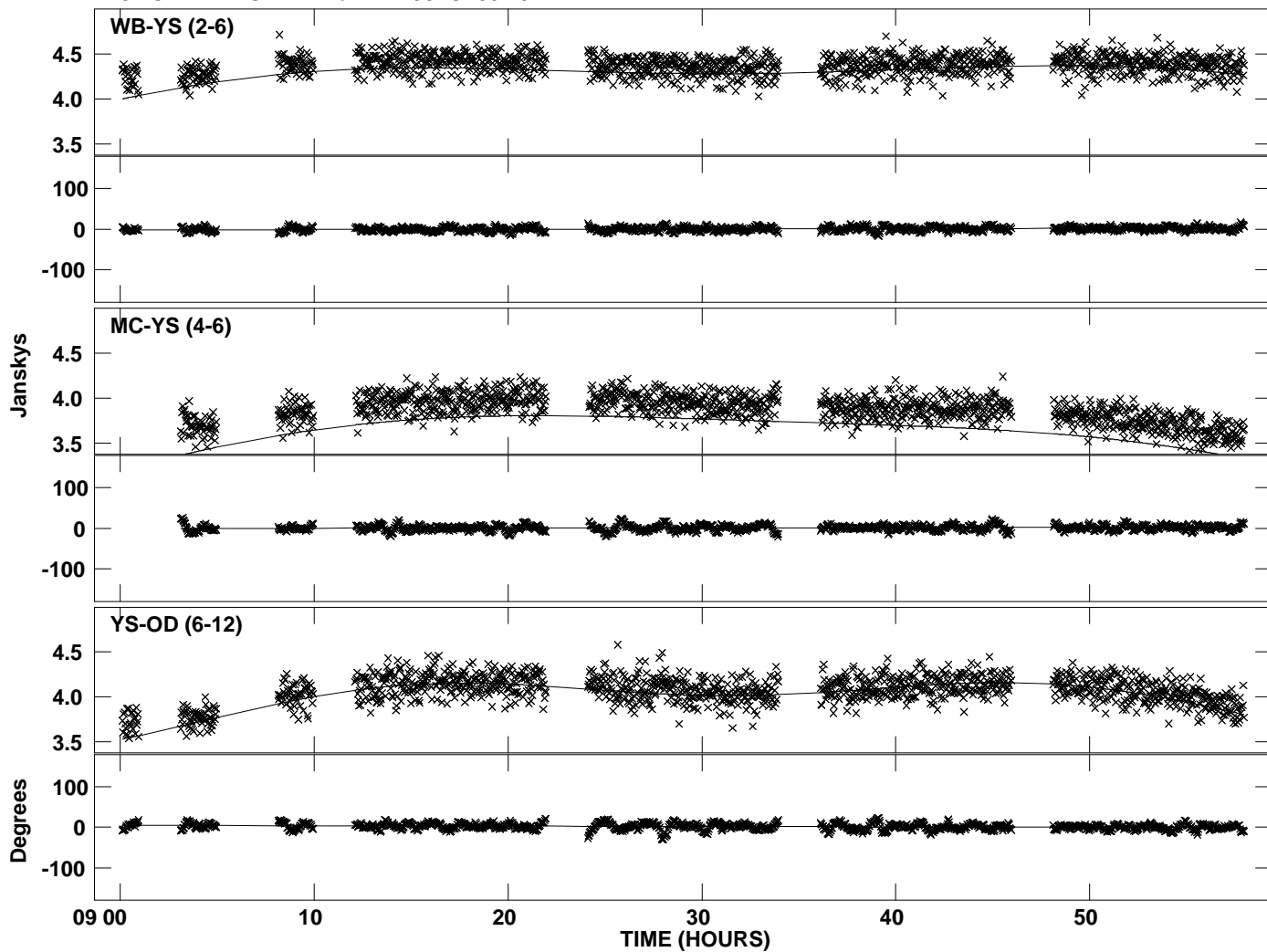
PLot file version 3 created 20-SEP-2013 10:31:34
Amplitude andPhase vs Time for DA193.MULTI.1 CL # 3
IF 3 CHAN 1 STK LL of DA193.ICL001.3



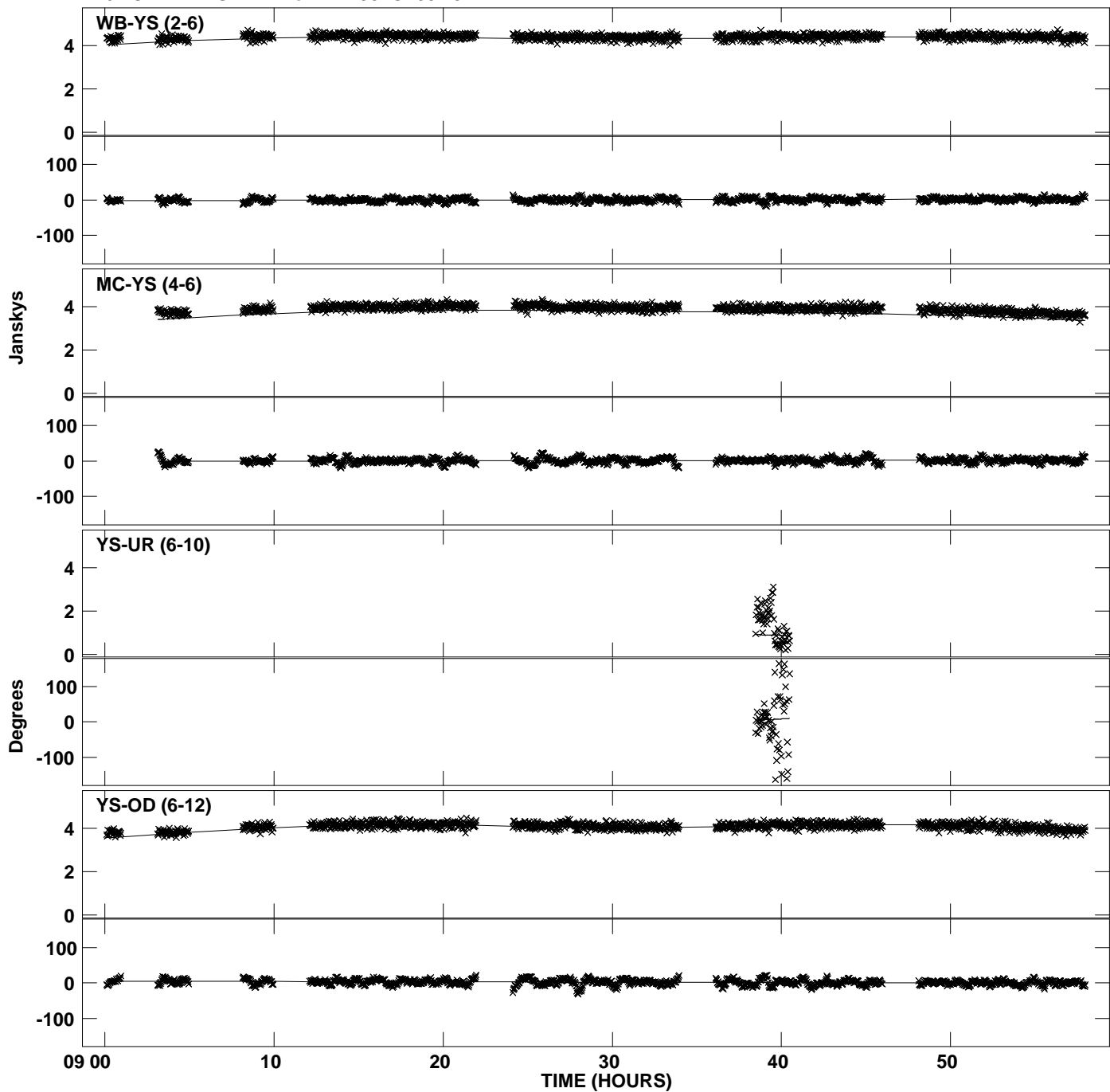
PLot file version 4 created 20-SEP-2013 10:31:34
Amplitude andPhase vs Time for DA193.MULTI.1 CL # 3
IF 4 CHAN 1 STK LL of DA193.ICL001.3



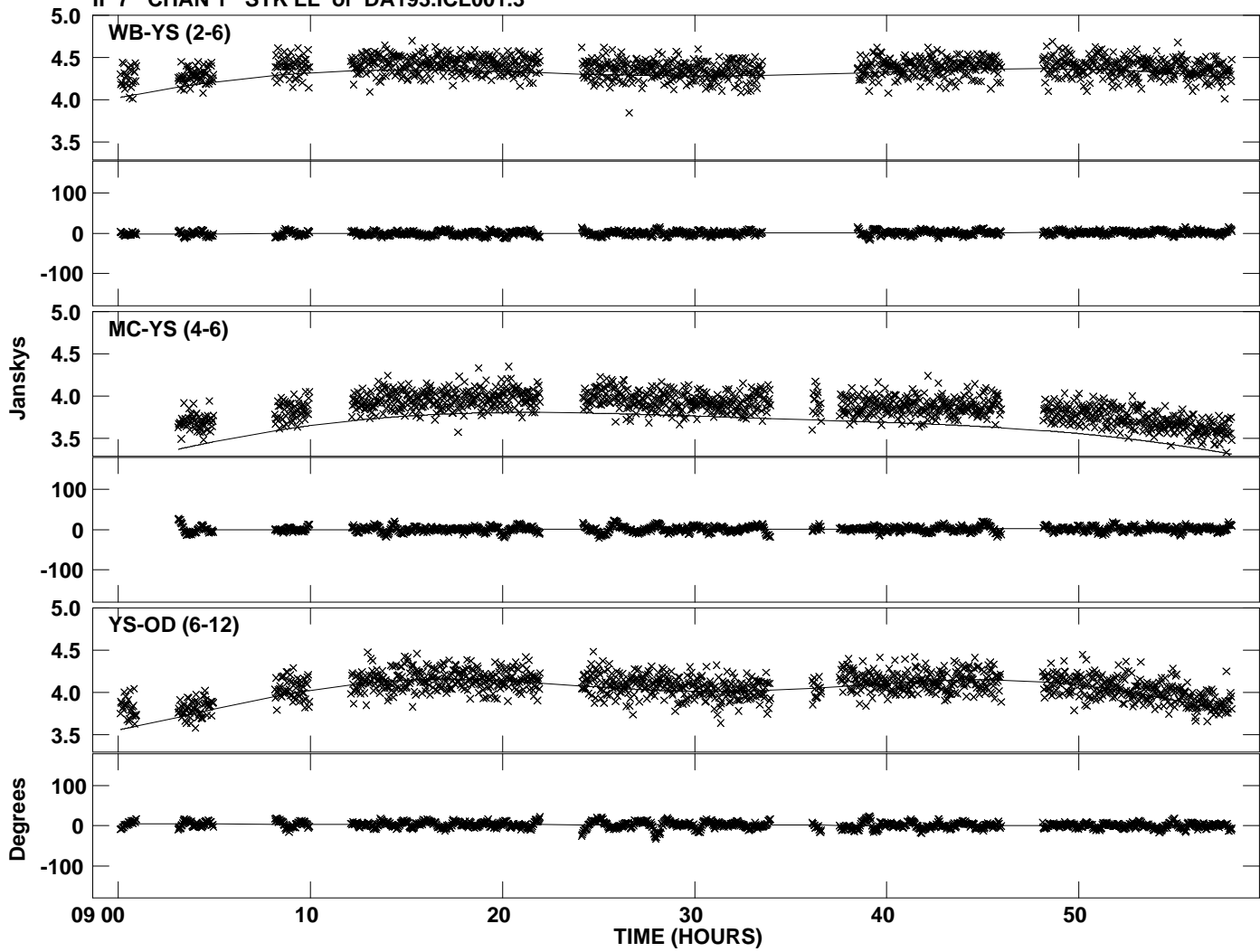
PLot file version 5 created 20-SEP-2013 10:31:34
Amplitude andPhase vs Time for DA193.MULTI.1 CL # 3
IF 5 CHAN 1 STK LL of DA193.ICL001.3



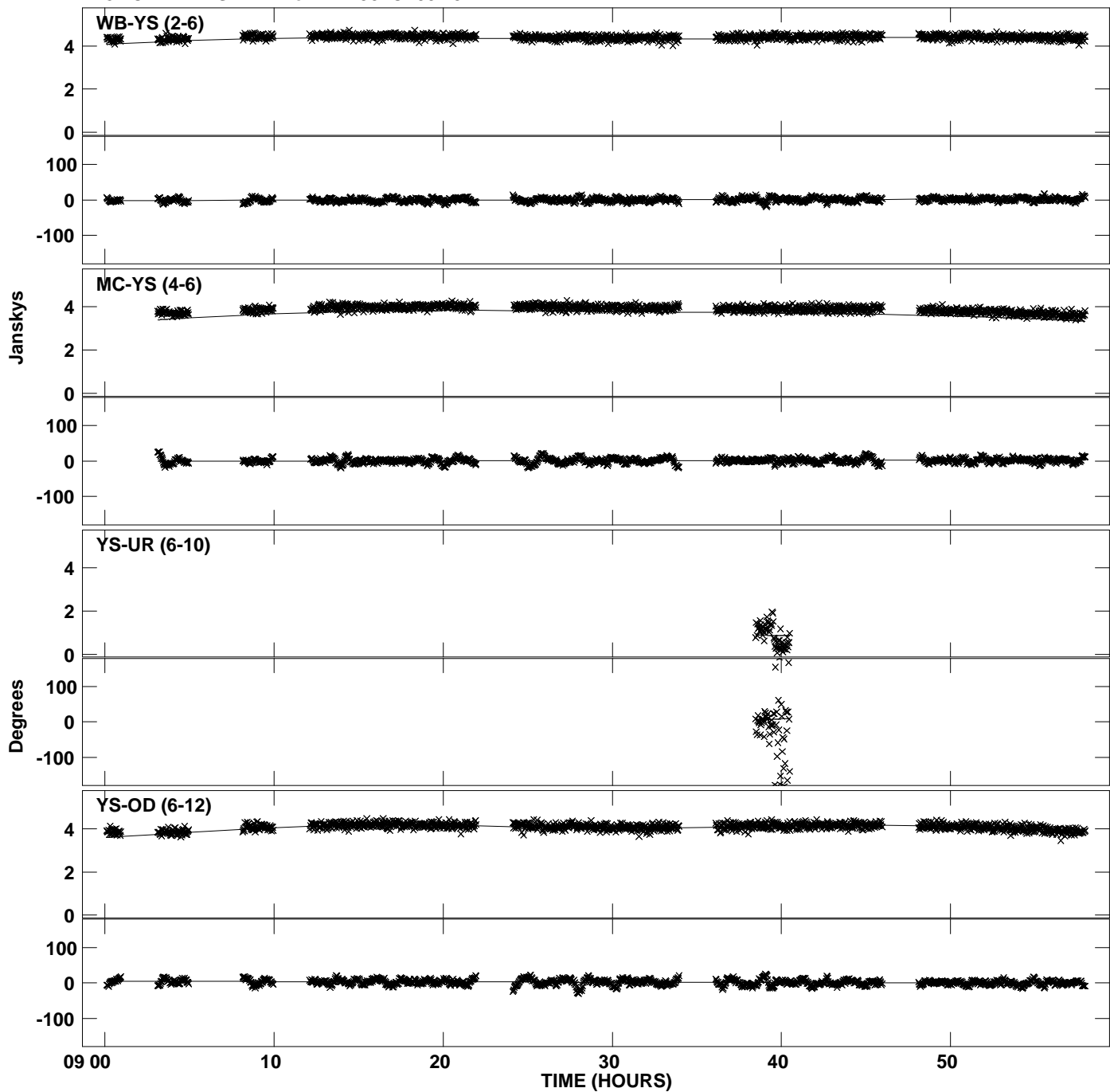
PLot file version 6 created 20-SEP-2013 10:31:34
Amplitude andPhase vs Time for DA193.MULTI.1 CL # 3
IF 6 CHAN 1 STK LL of DA193.ICL001.3



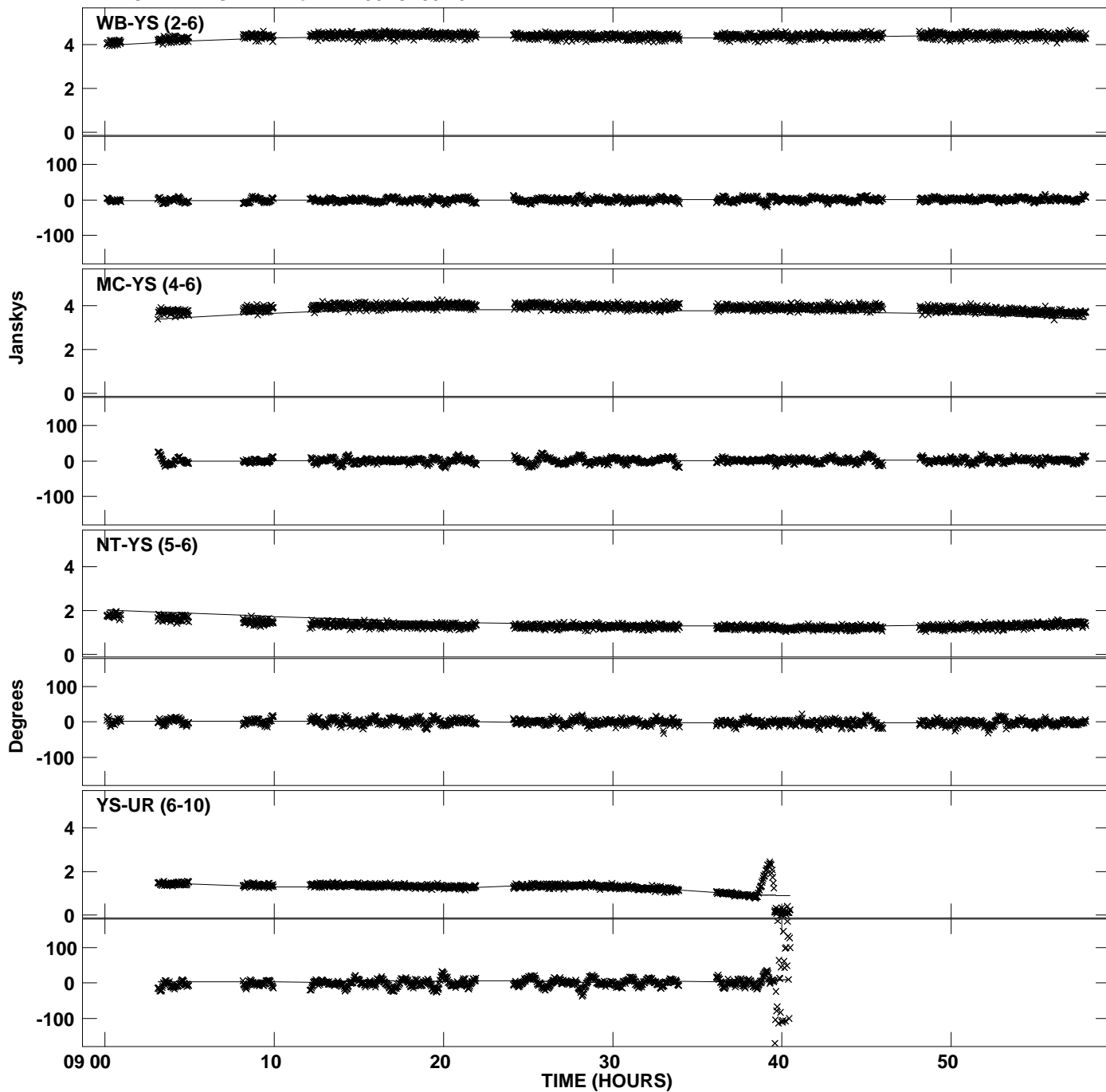
PLot file version 7 created 20-SEP-2013 10:31:34
Amplitude andPhase vs Time for DA193.MULTI.1 CL # 3
IF 7 CHAN 1 STK LL of DA193.ICL001.3



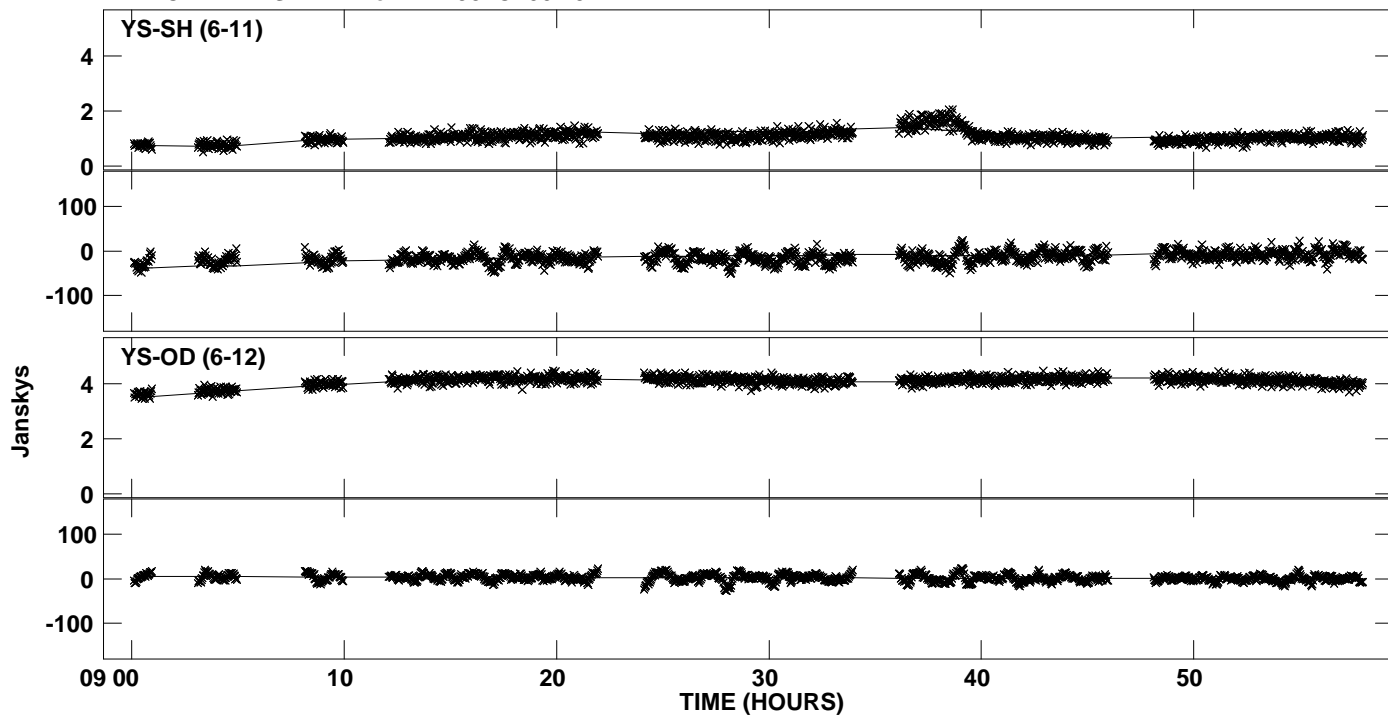
Plot file version 8 created 20-SEP-2013 10:31:35
Amplitude andPhase vs Time for DA193.MULTI.1 CL # 3
IF 8 CHAN 1 STK LL of DA193.ICL001.3



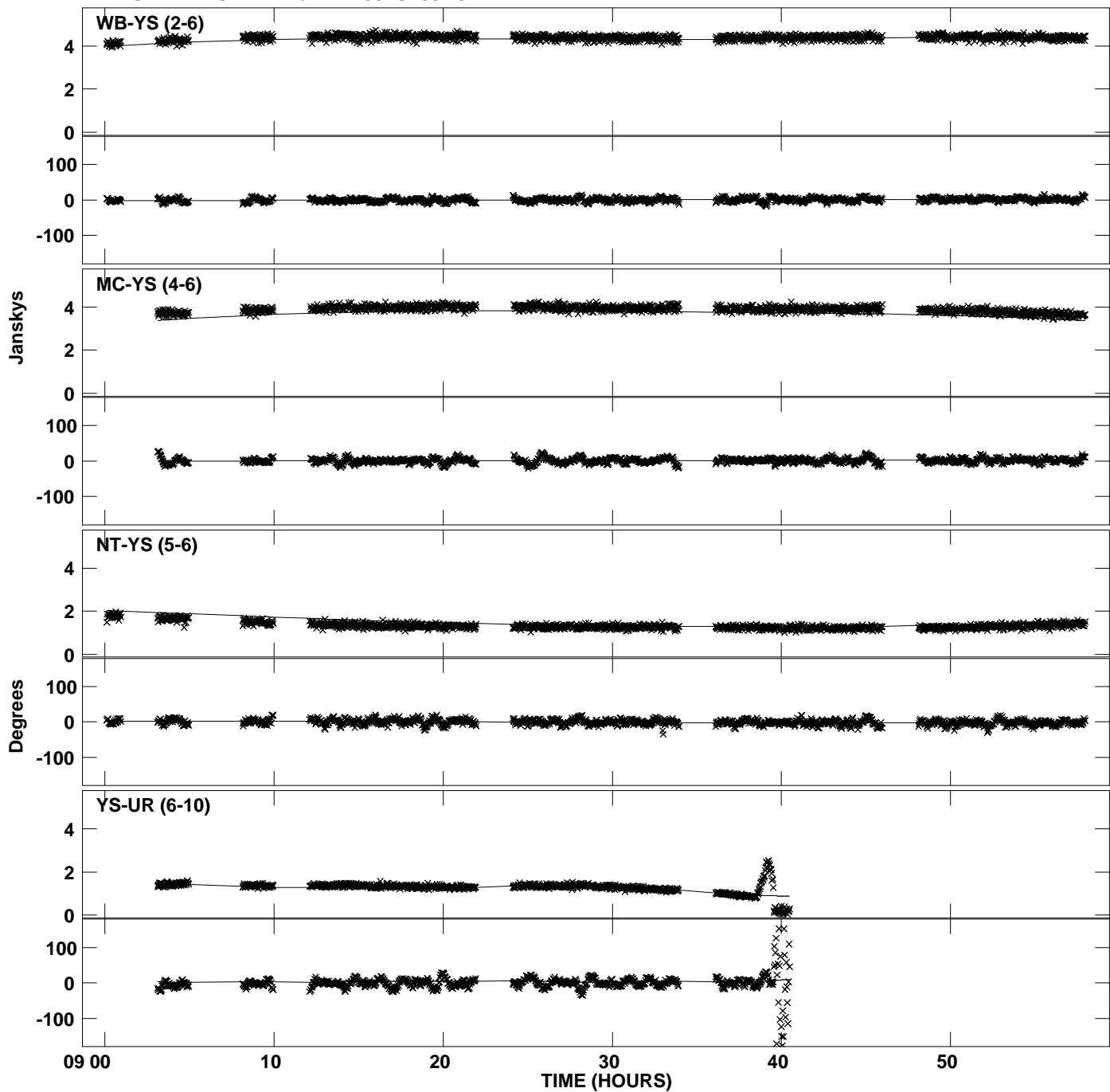
PLot file version 9 created 20-SEP-2013 10:31:35
Amplitude andPhase vs Time for DA193.MULTI.1 CL # 3
IF 1 CHAN 1 STK RR of DA193.ICL001.3



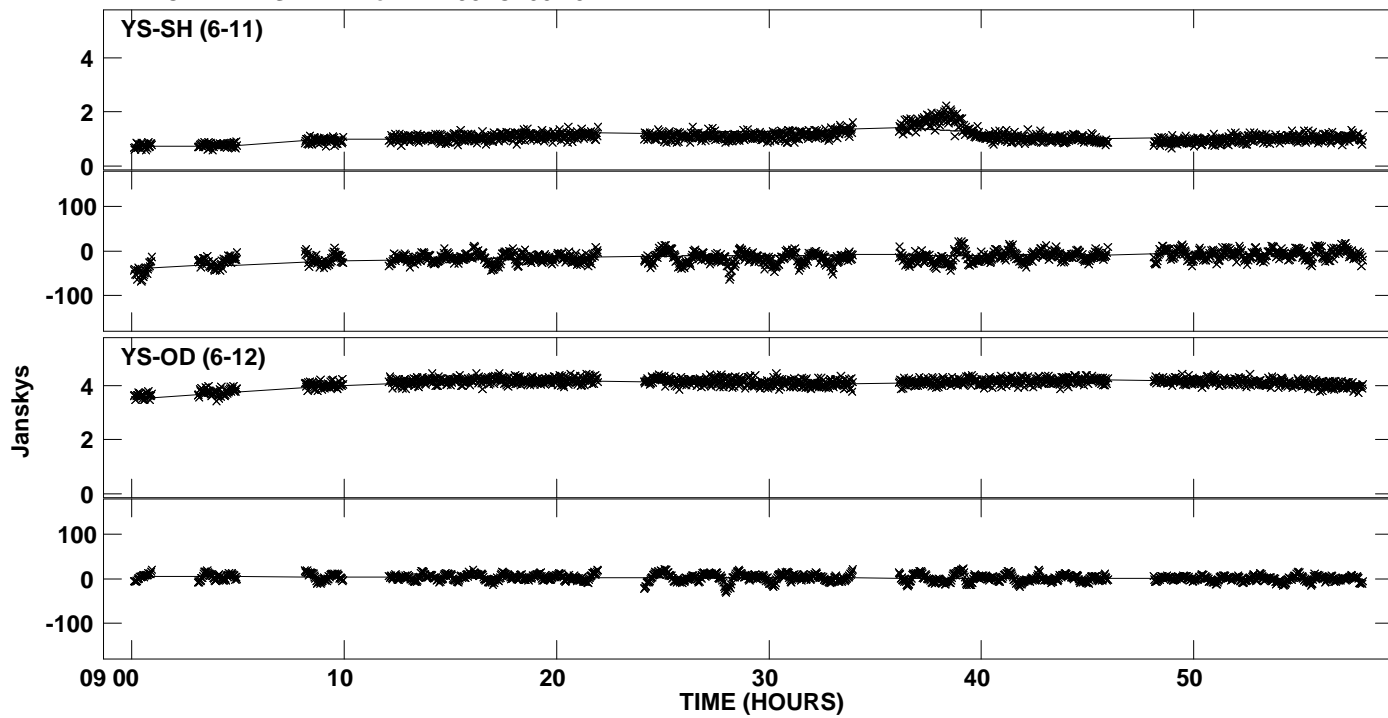
PLot file version 10 created 20-SEP-2013 10:31:35
Amplitude andPhase vs Time for DA193.MULTI.1 CL # 3
IF 1 CHAN 1 STK RR of DA193.ICL001.3



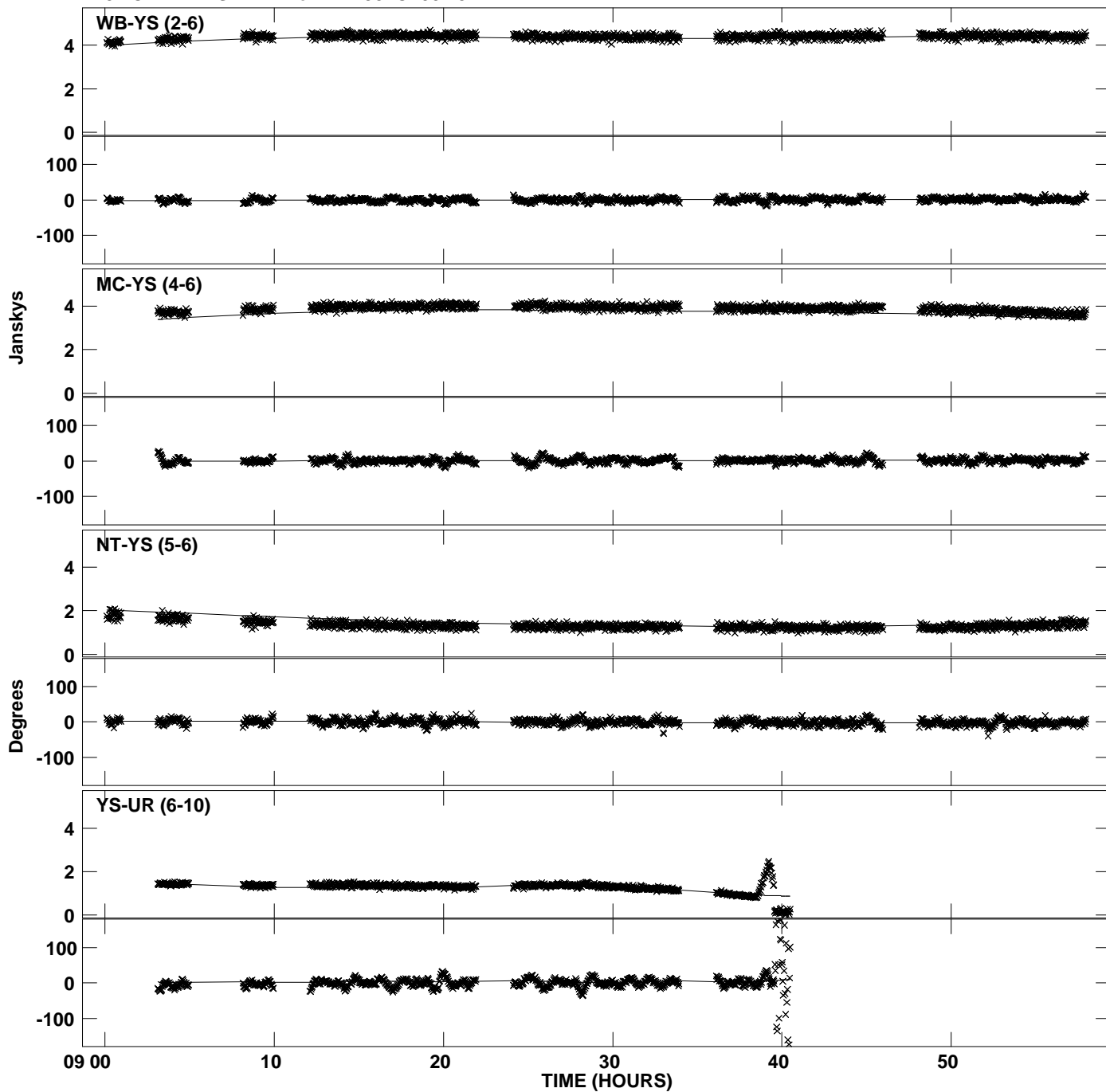
PLot file version 11 created 20-SEP-2013 10:31:35
Amplitude andPhase vs Time for DA193.MULTI.1 CL # 3
IF 2 CHAN 1 STK RR of DA193.ICL001.3



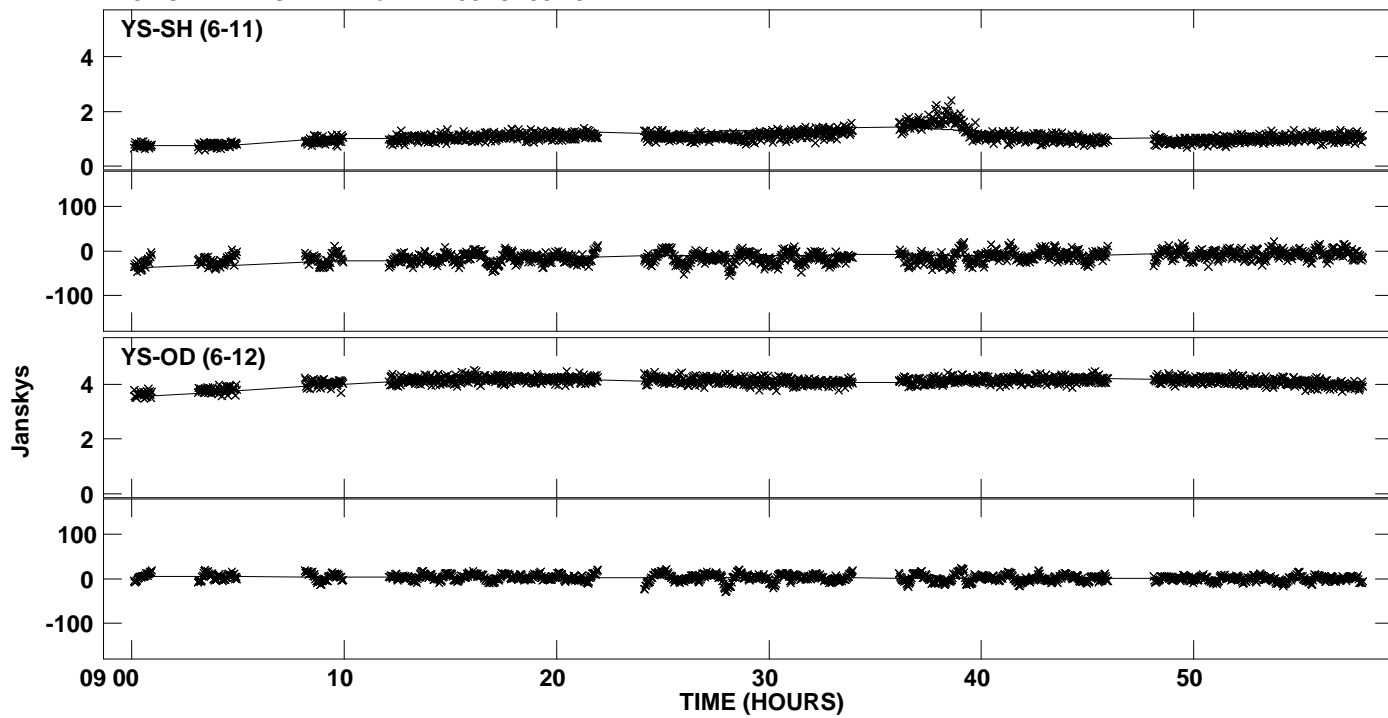
PLot file version 12 created 20-SEP-2013 10:31:35
Amplitude andPhase vs Time for DA193.MULTI.1 CL # 3
IF 2 CHAN 1 STK RR of DA193.ICL001.3



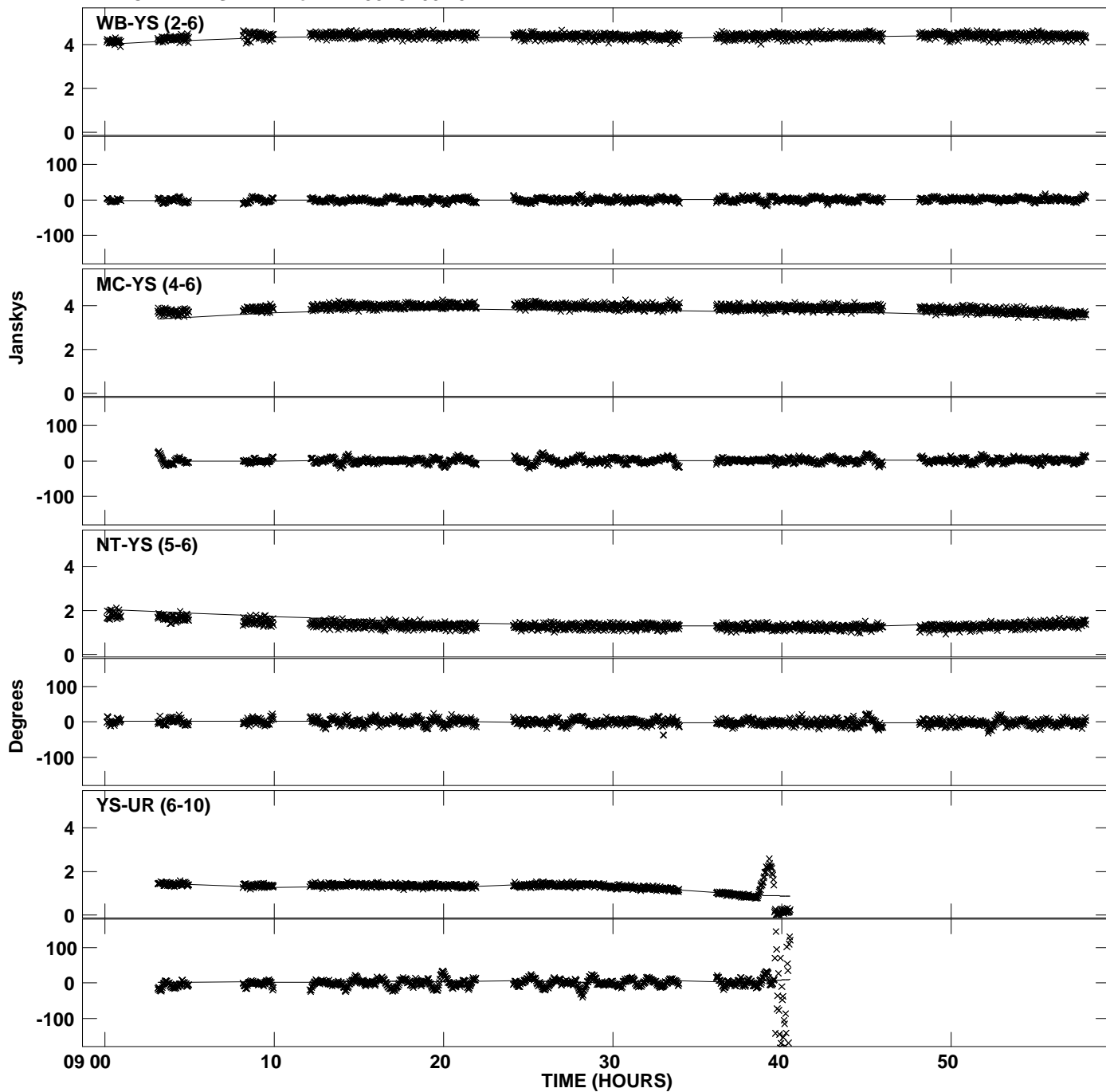
PLot file version 13 created 20-SEP-2013 10:31:36
Amplitude andPhase vs Time for DA193.MULTI.1 CL # 3
IF 3 CHAN 1 STK RR of DA193.ICL001.3



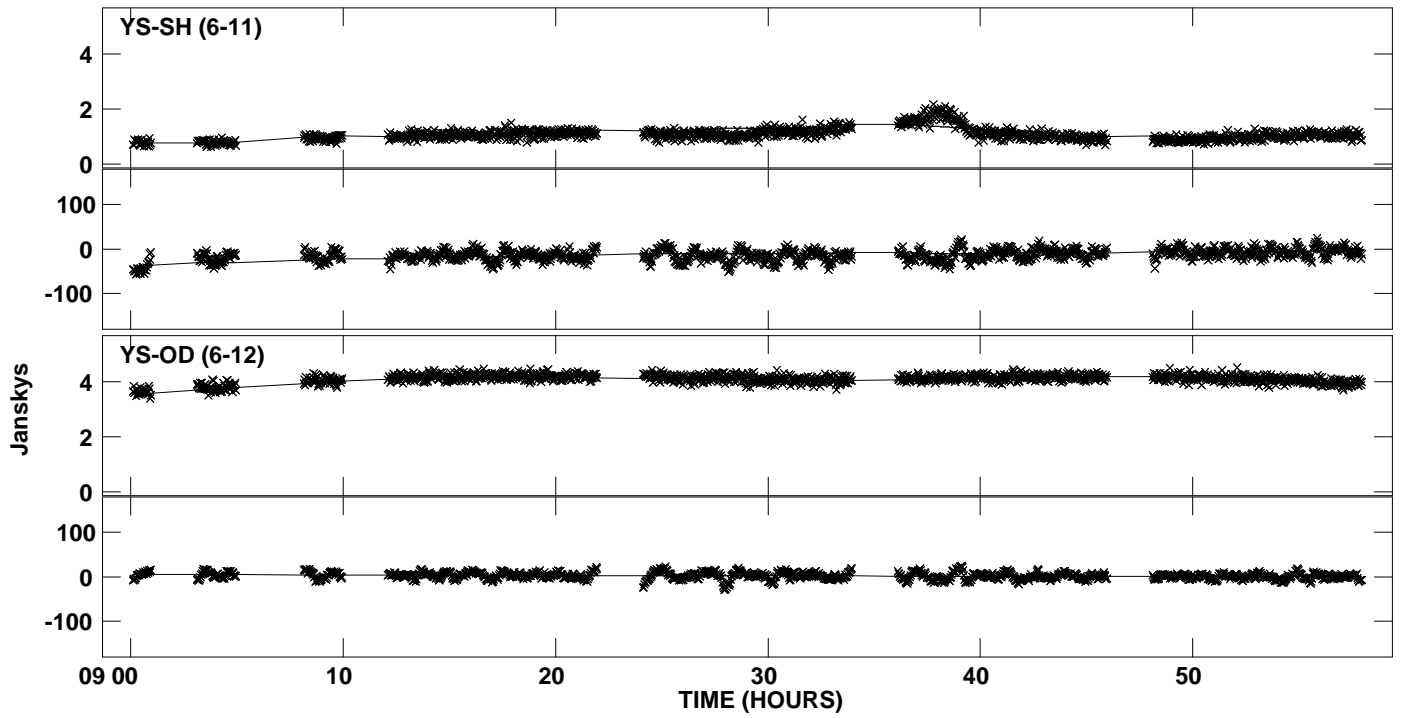
PLot file version 14 created 20-SEP-2013 10:31:36
Amplitude andPhase vs Time for DA193.MULTI.1 CL # 3
IF 3 CHAN 1 STK RR of DA193.ICL001.3



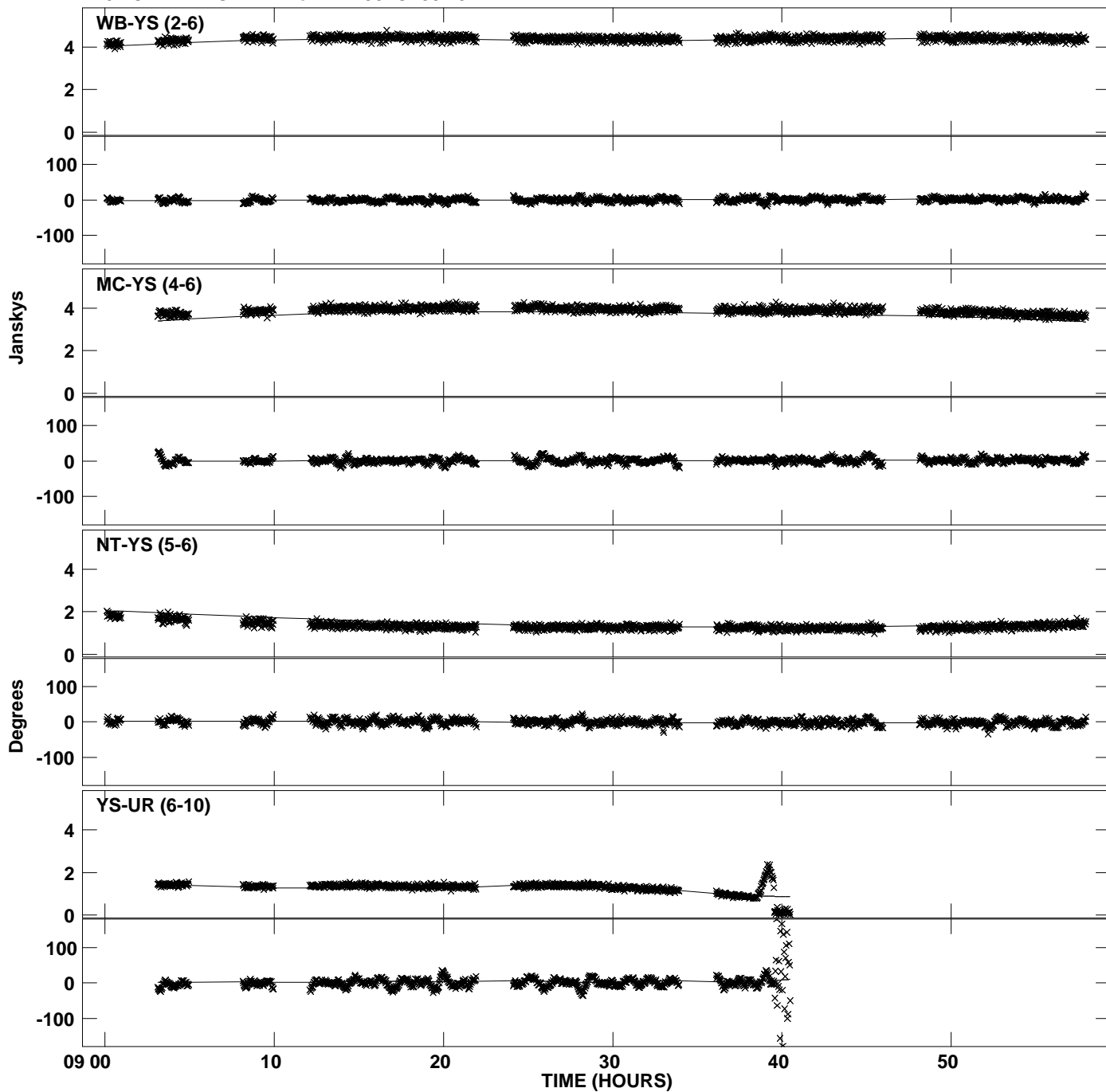
PLot file version 15 created 20-SEP-2013 10:31:36
Amplitude andPhase vs Time for DA193.MULTI.1 CL # 3
IF 4 CHAN 1 STK RR of DA193.ICL001.3



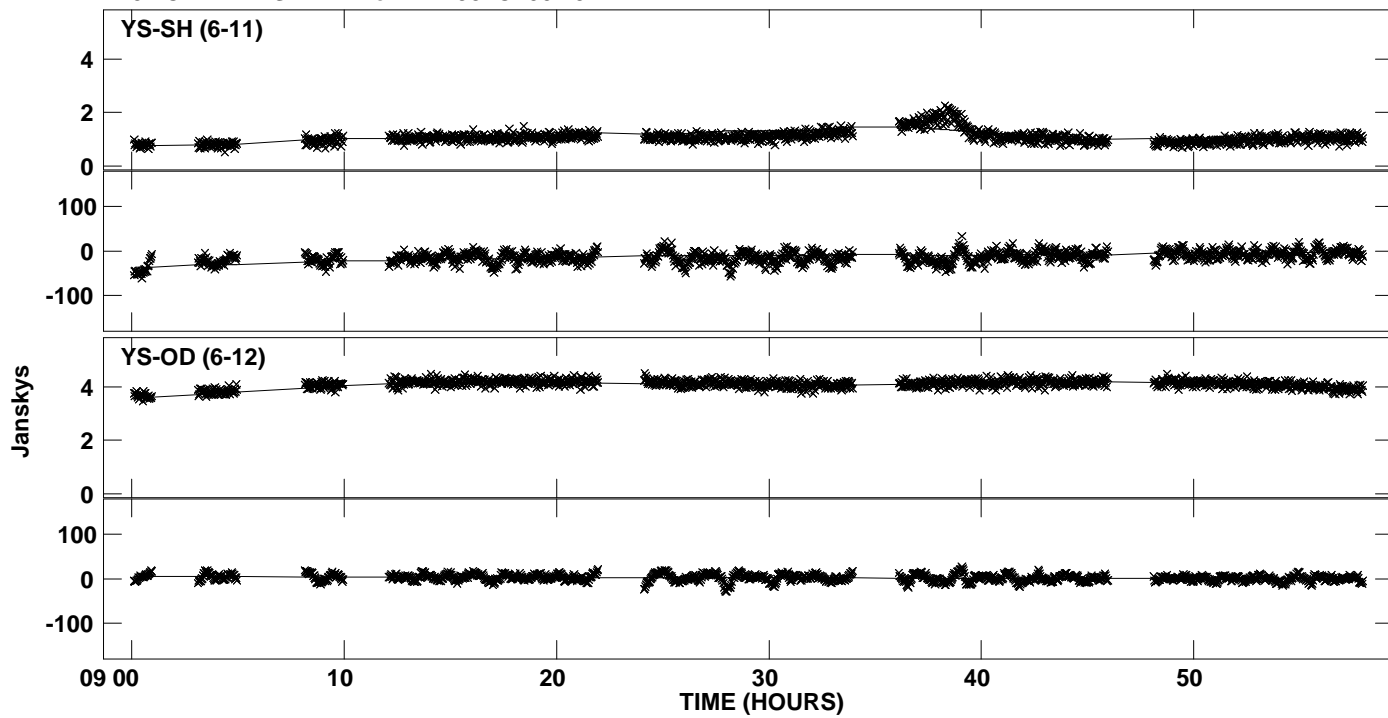
PLot file version 16 created 20-SEP-2013 10:31:36
Amplitude andPhase vs Time for DA193.MULTI.1 CL # 3
IF 4 CHAN 1 STK RR of DA193.ICL001.3



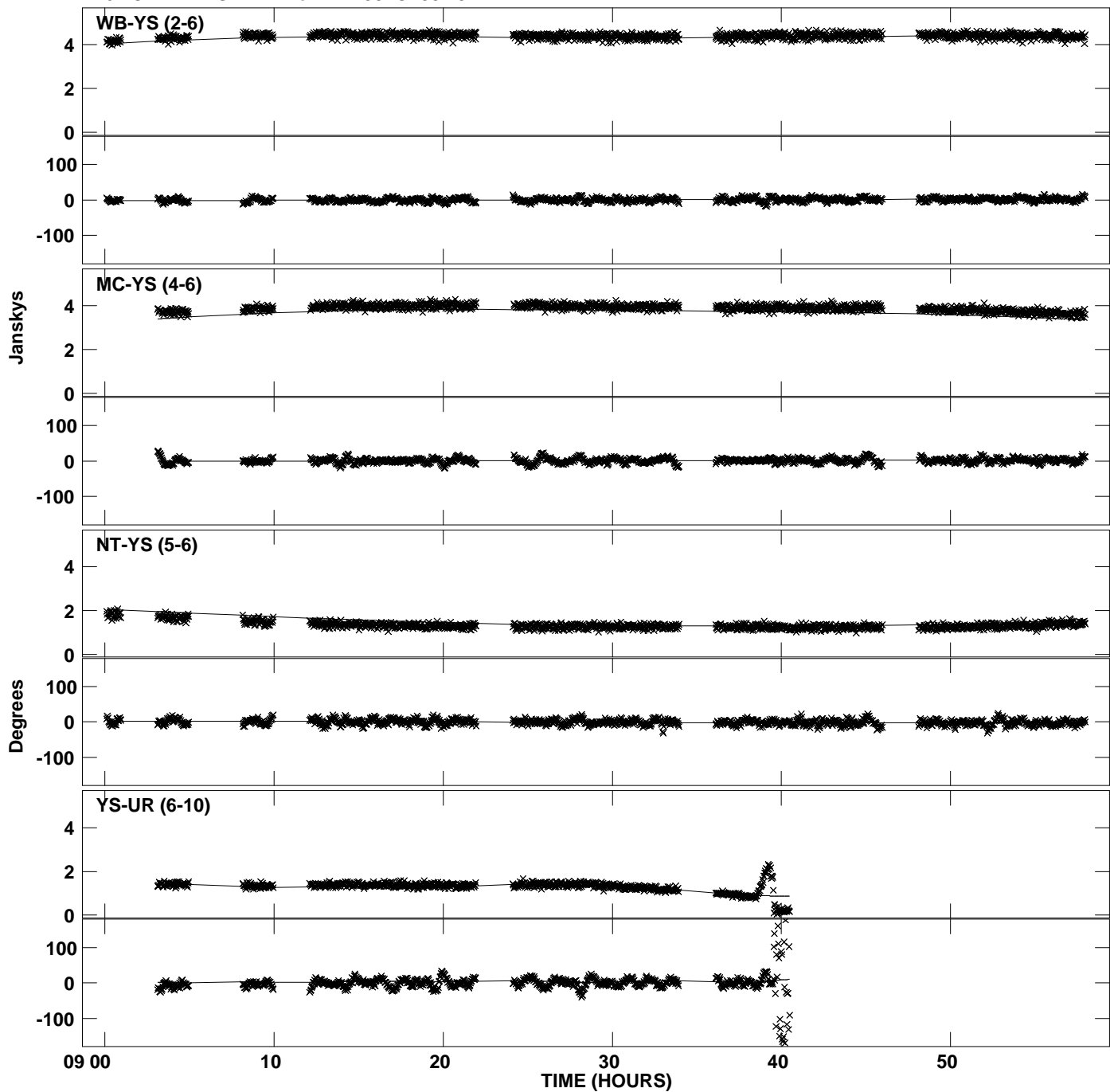
PLot file version 17 created 20-SEP-2013 10:31:36
Amplitude andPhase vs Time for DA193.MULTI.1 CL # 3
IF 5 CHAN 1 STK RR of DA193.ICL001.3



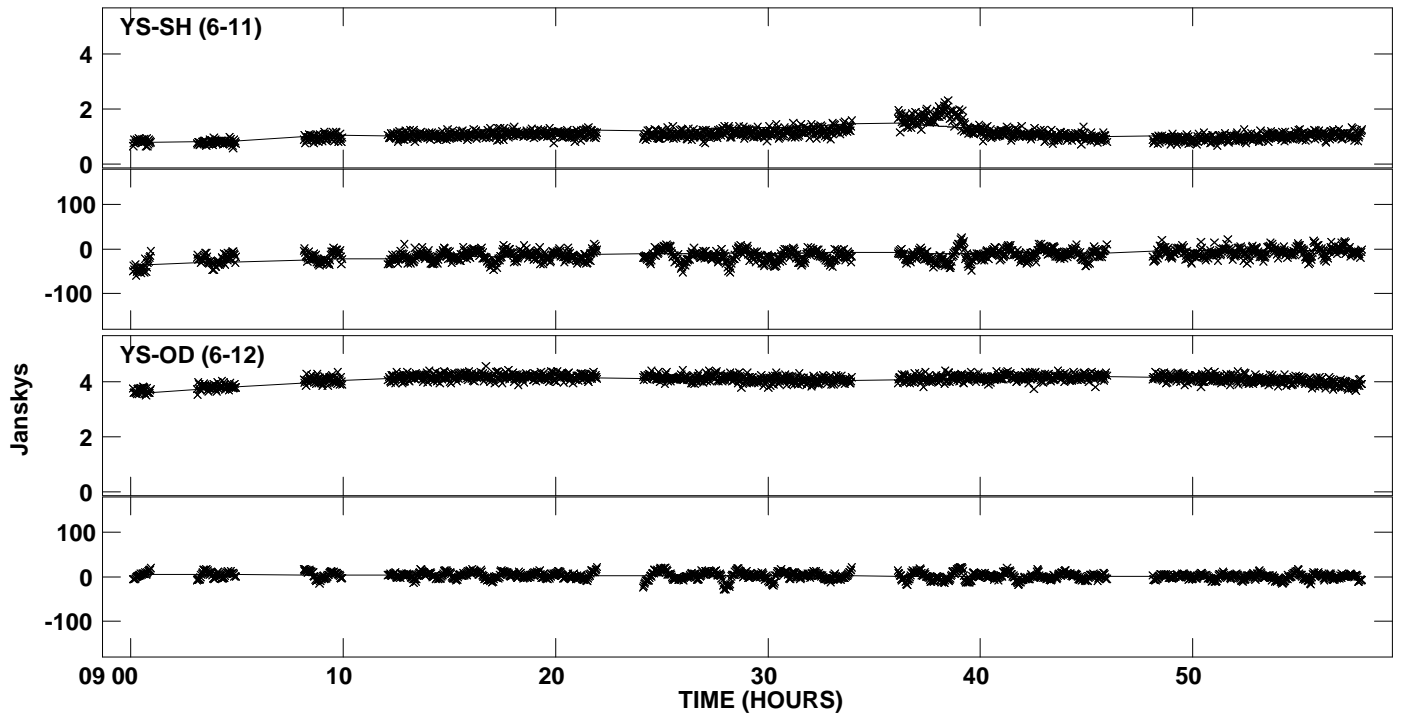
PLot file version 18 created 20-SEP-2013 10:31:36
Amplitude andPhase vs Time for DA193.MULTI.1 CL # 3
IF 5 CHAN 1 STK RR of DA193.ICL001.3



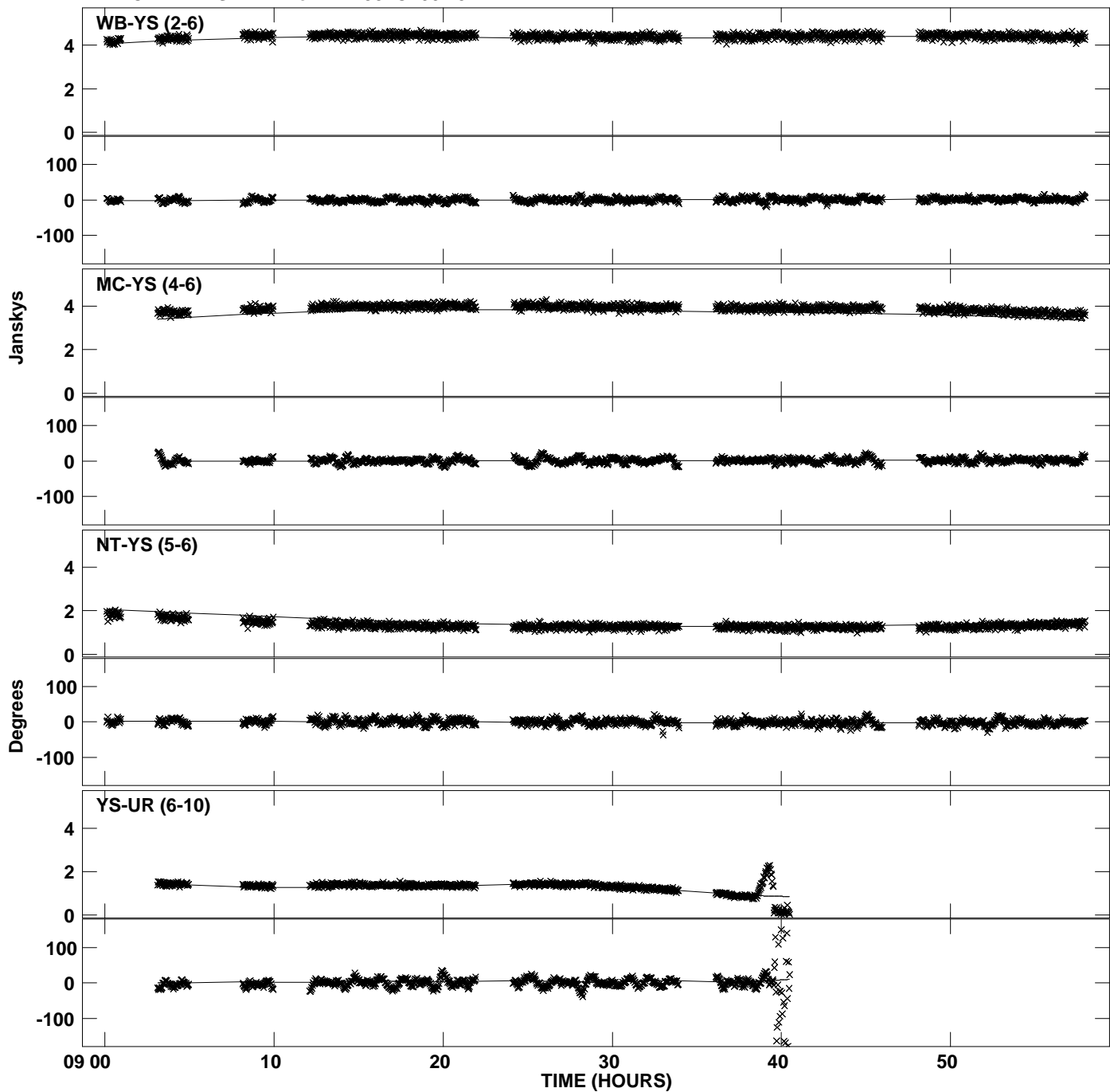
Plot file version 19 created 20-SEP-2013 10:31:36
Amplitude and Phase vs Time for DA193.MULTI.1 CL # 3
IF 6 CHAN 1 STK RR of DA193.ICL001.3



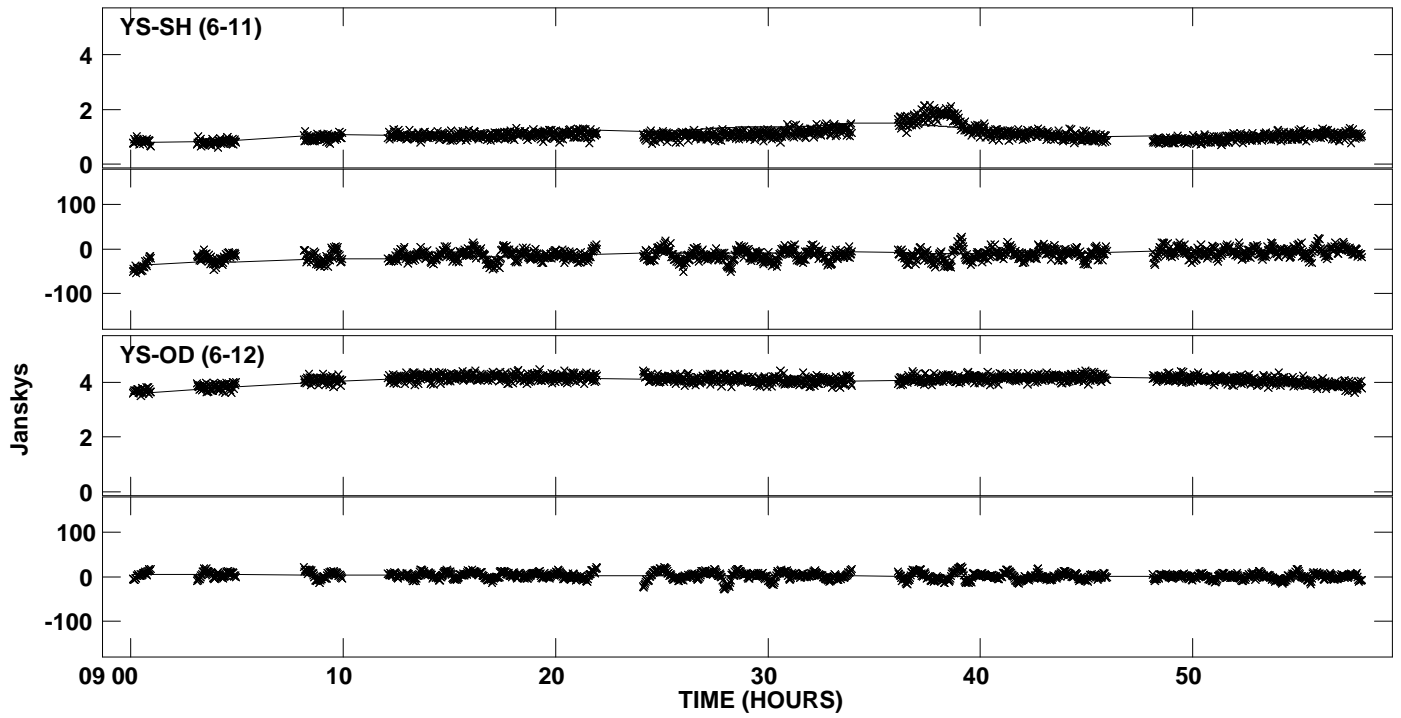
PLot file version 20 created 20-SEP-2013 10:31:36
Amplitude andPhase vs Time for DA193.MULTI.1 CL # 3
IF 6 CHAN 1 STK RR of DA193.ICL001.3



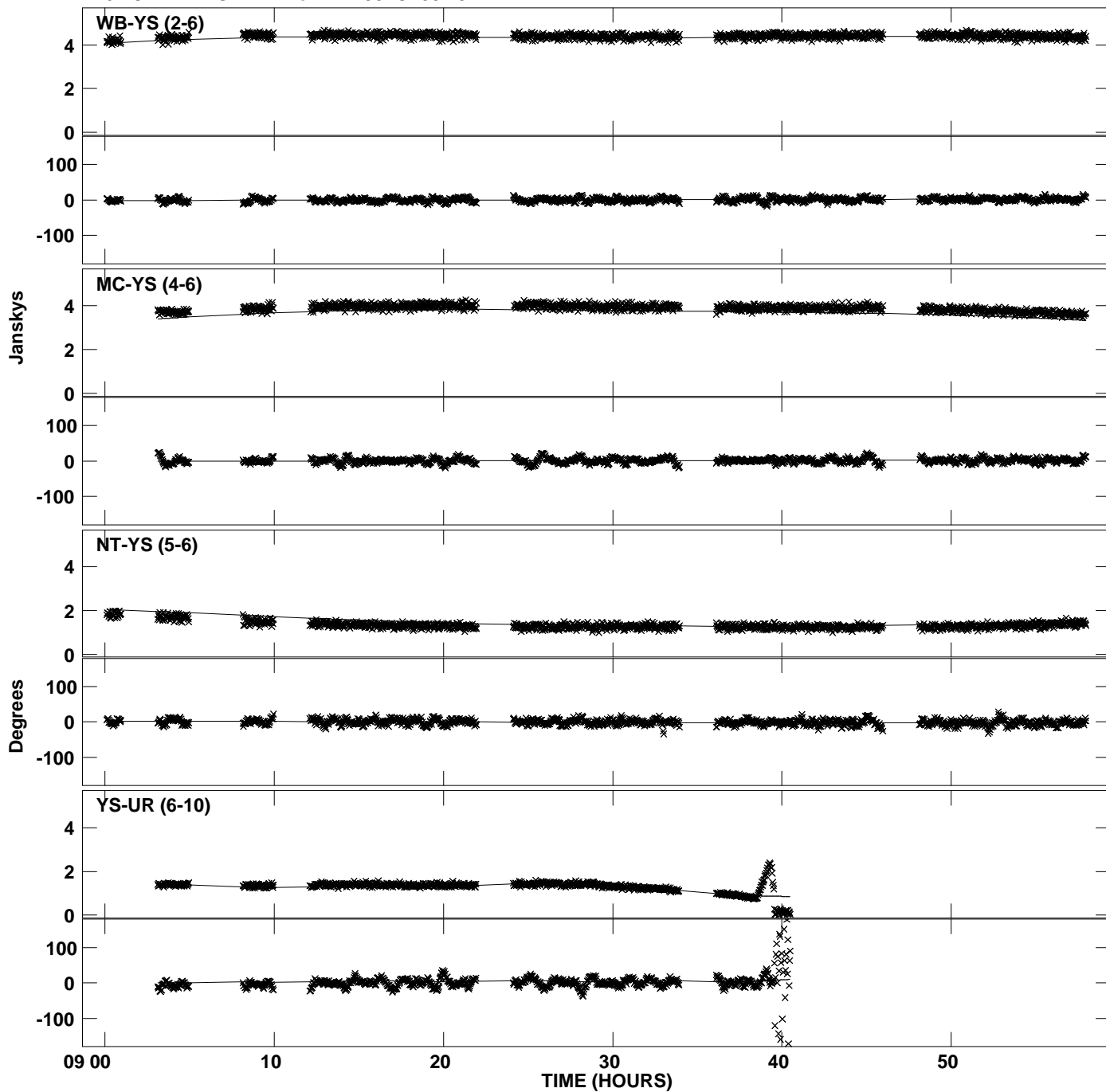
PLot file version 21 created 20-SEP-2013 10:31:37
Amplitude andPhase vs Time for DA193.MULTI.1 CL # 3
IF 7 CHAN 1 STK RR of DA193.ICL001.3



PLot file version 22 created 20-SEP-2013 10:31:37
Amplitude andPhase vs Time for DA193.MULTI.1 CL # 3
IF 7 CHAN 1 STK RR of DA193.ICL001.3



PLot file version 23 created 20-SEP-2013 10:31:37
Amplitude andPhase vs Time for DA193.MULTI.1 CL # 3
IF 8 CHAN 1 STK RR of DA193.ICL001.3



PLot file version 24 created 20-SEP-2013 10:31:37
Amplitude andPhase vs Time for DA193.MULTI.1 CL # 3
IF 8 CHAN 1 STK RR of DA193.ICL001.3

