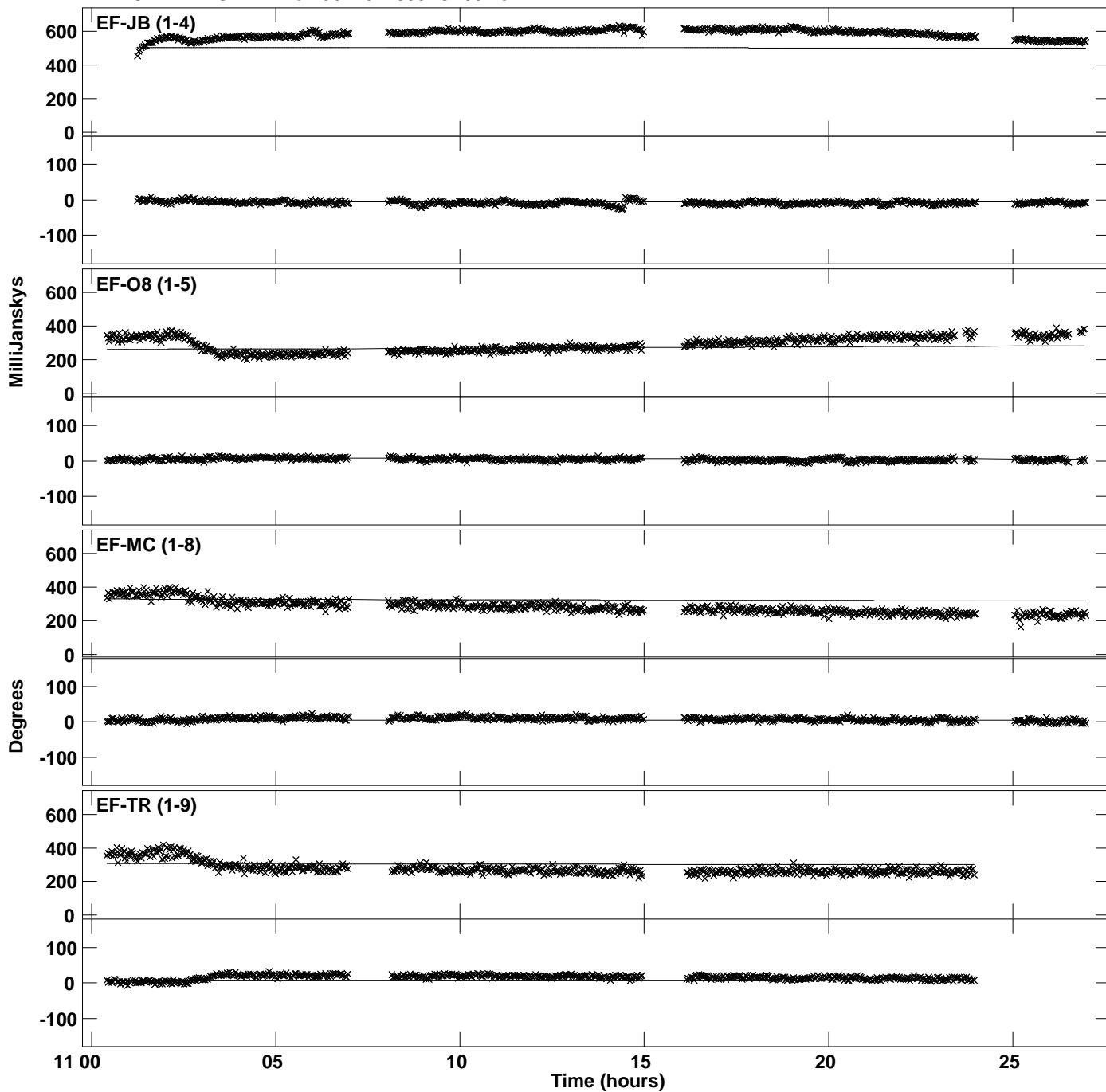
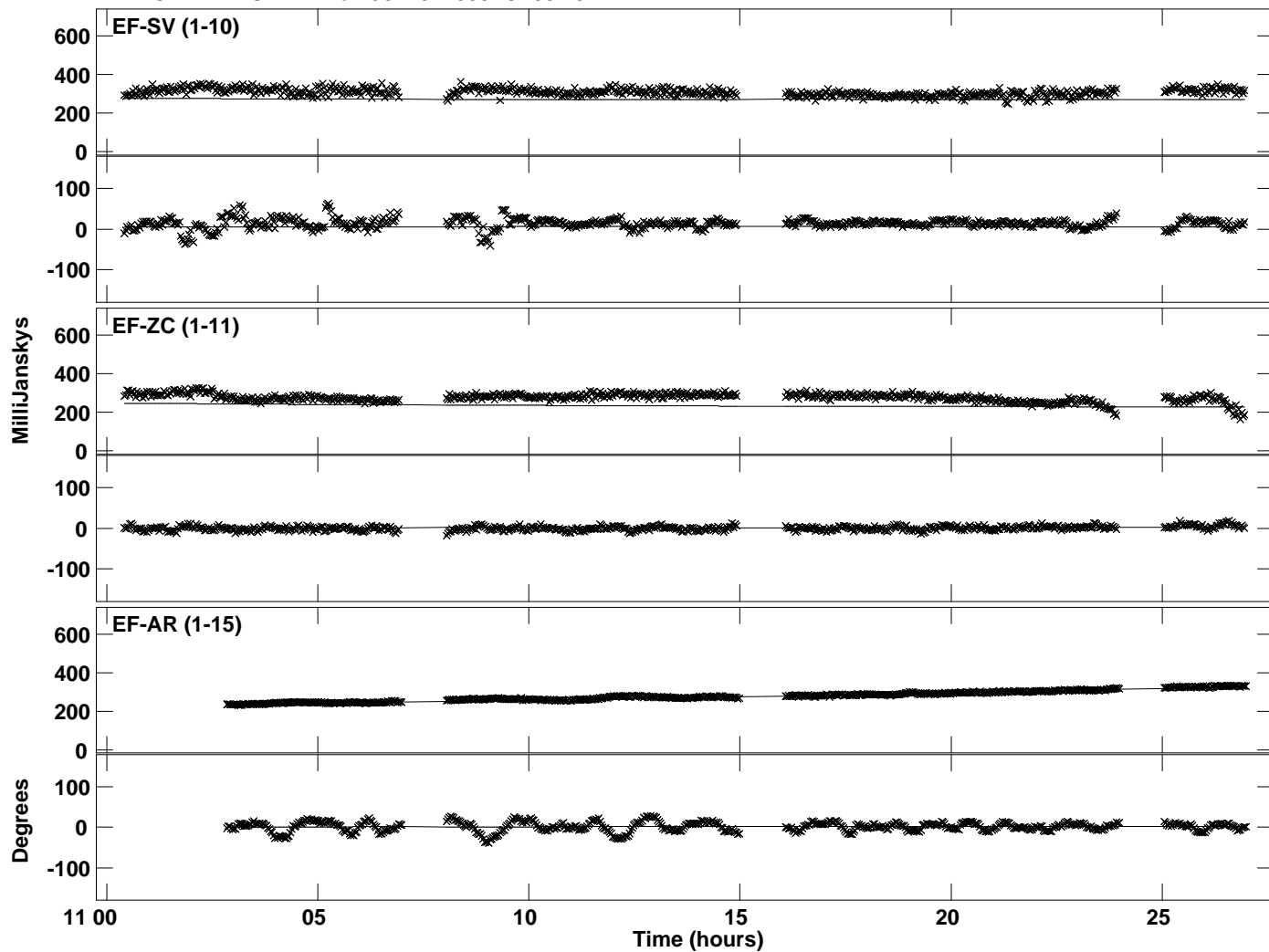


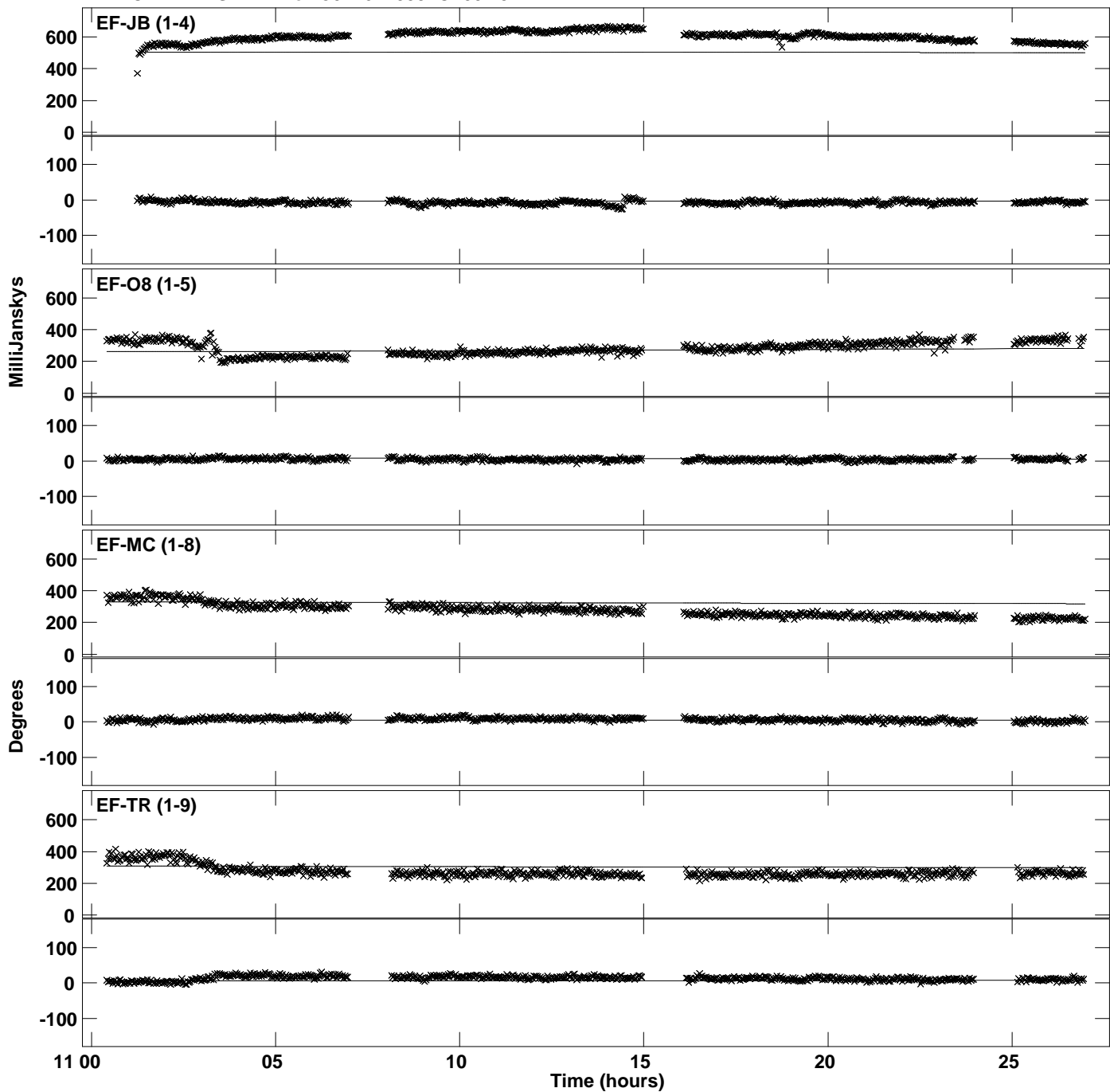
Plot file version 1 created 13-AUG-2015 16:37:19
Amplitude and Phase vs Time for J0126+2559.MULTI.1 CL # 3
IF 1 CHAN 1 STK LL of J0126+2559.ICL001.3



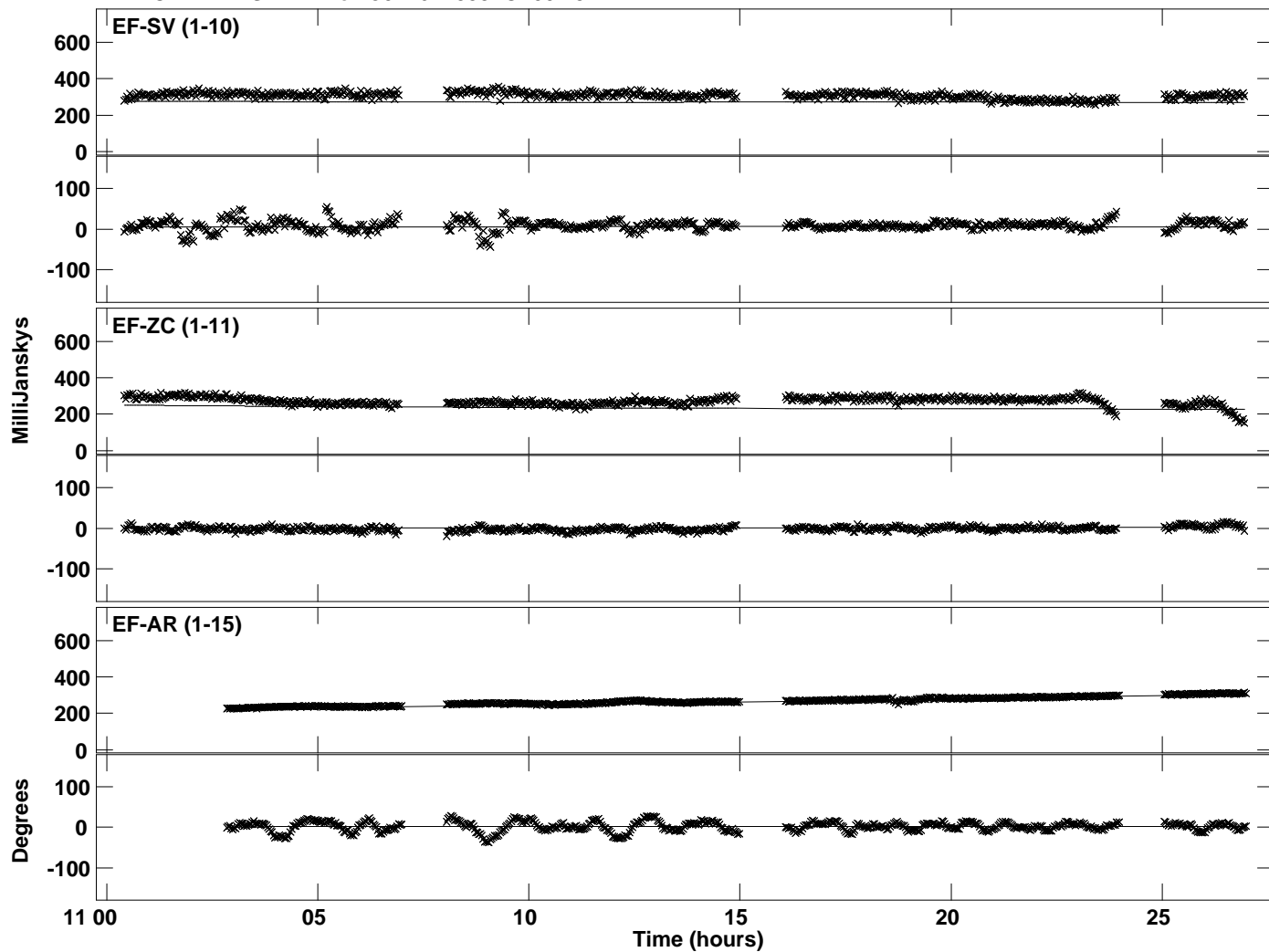
Plot file version 2 created 13-AUG-2015 16:37:19
Amplitude andPhase vs Time for J0126+2559.MULTI.1 CL # 3
IF 1 CHAN 1 STK LL of J0126+2559.ICL001.3



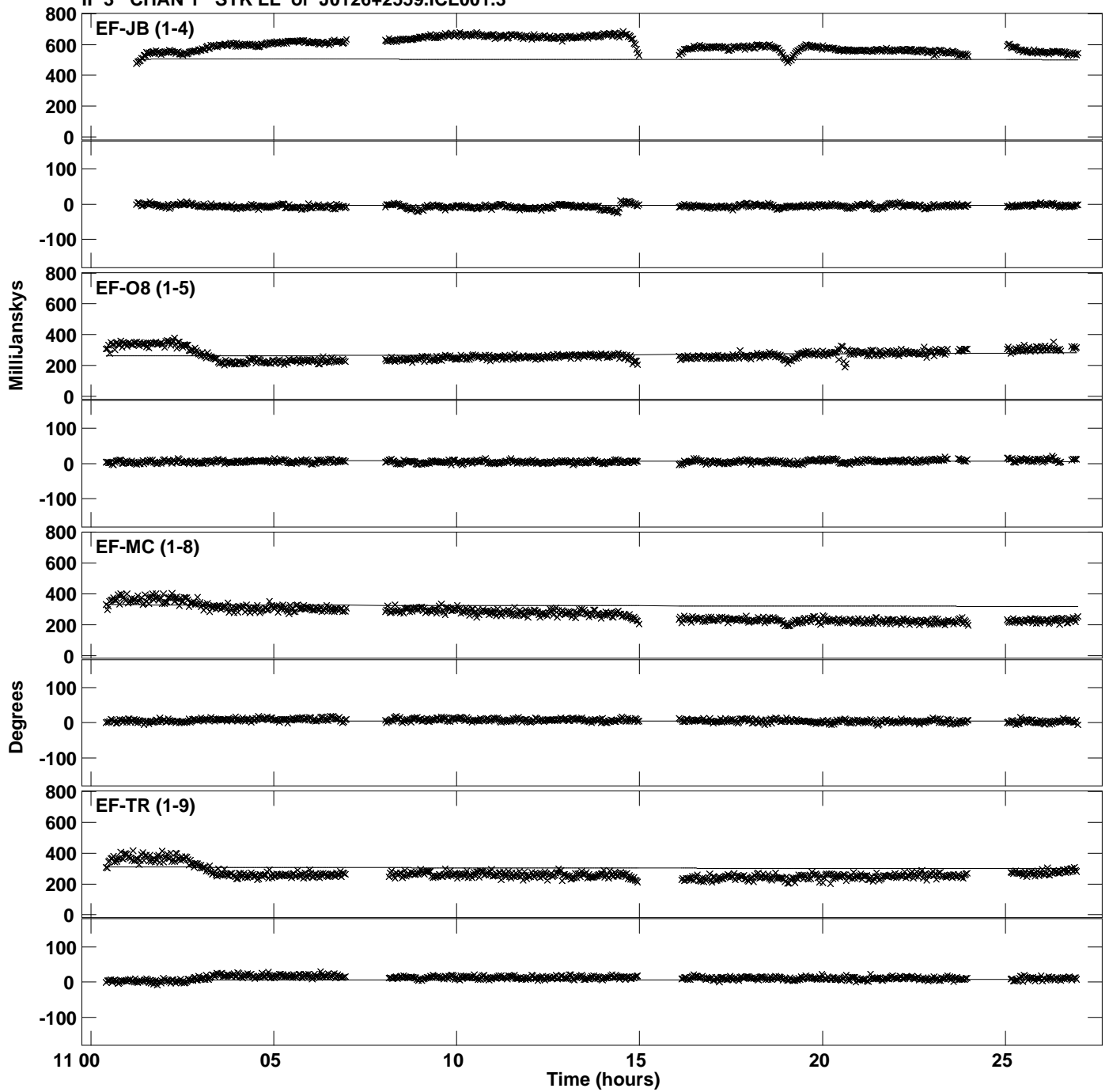
Plot file version 3 created 13-AUG-2015 16:37:19
Amplitude and Phase vs Time for J0126+2559.MULTI.1 CL # 3
IF 2 CHAN 1 STK LL of J0126+2559.ICL001.3



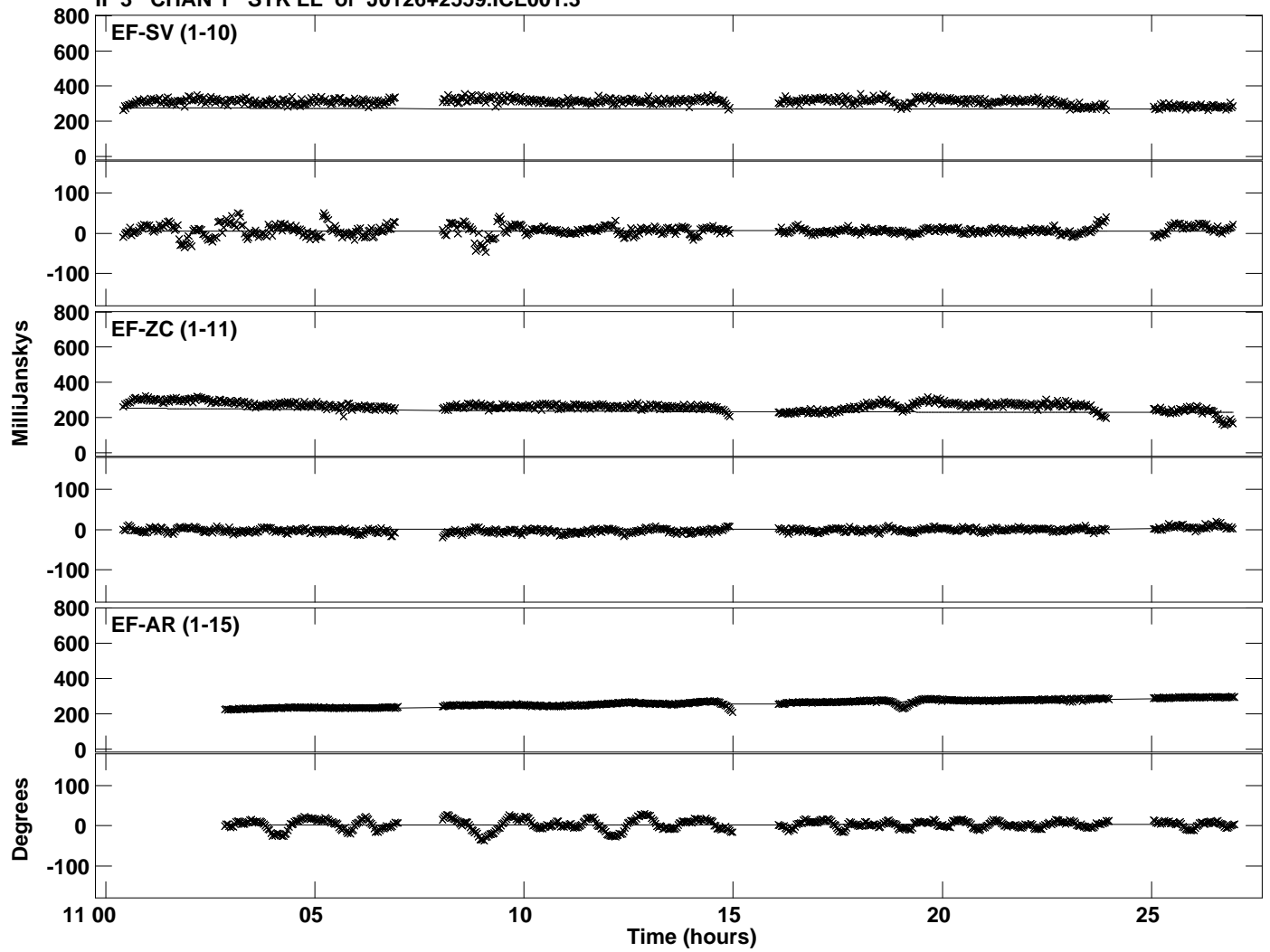
Plot file version 4 created 13-AUG-2015 16:37:19
Amplitude and Phase vs Time for J0126+2559.MULTI.1 CL # 3
IF 2 CHAN 1 STK LL of J0126+2559.ICL001.3



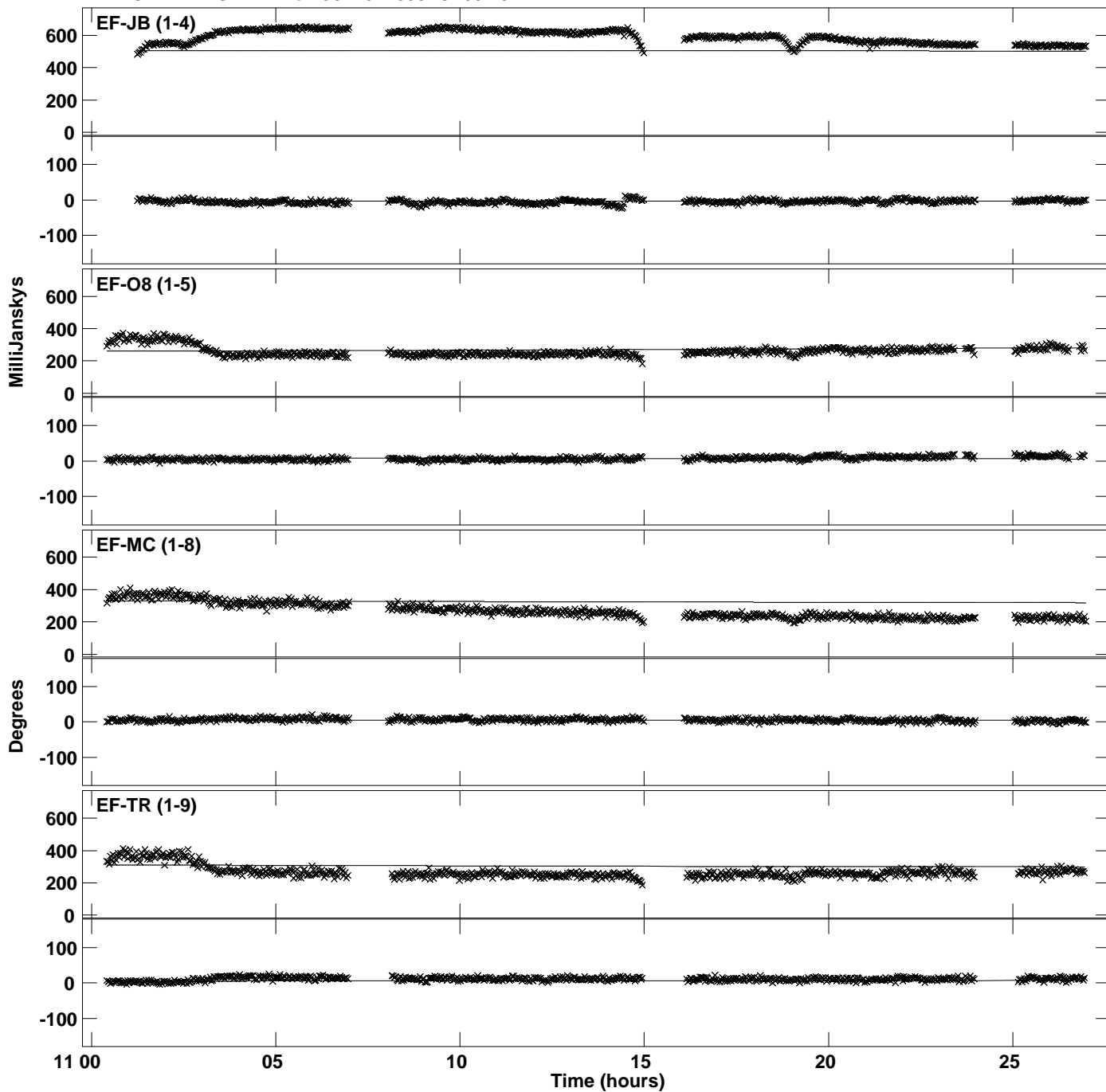
Plot file version 5 created 13-AUG-2015 16:37:20
Amplitude and Phase vs Time for J0126+2559.MULTI.1 CL # 3
IF 3 CHAN 1 STK LL of J0126+2559.ICL001.3



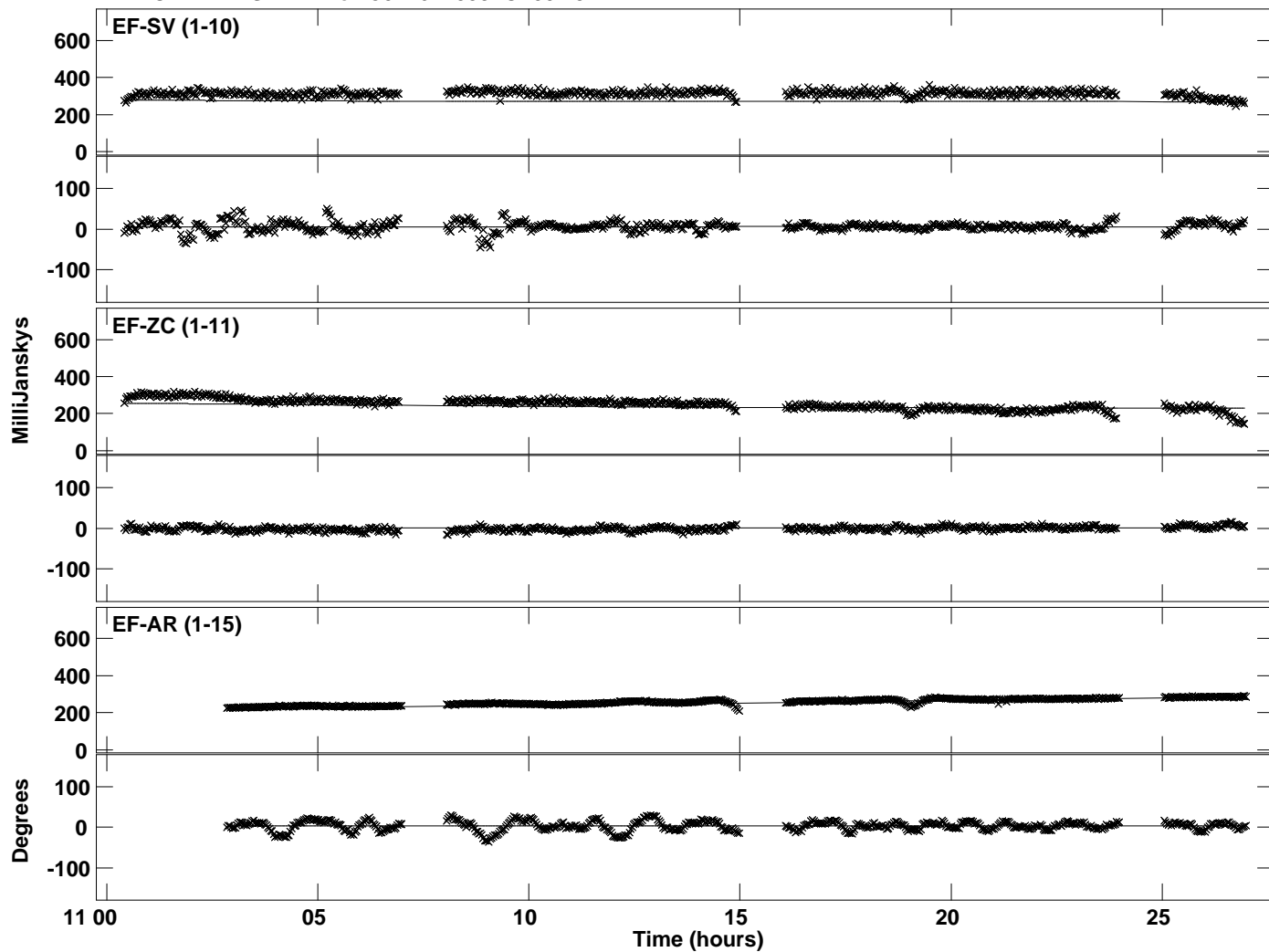
Plot file version 6 created 13-AUG-2015 16:37:20
Amplitude andPhase vs Time for J0126+2559.MULTI.1 CL # 3
IF 3 CHAN 1 STK LL of J0126+2559.ICL001.3



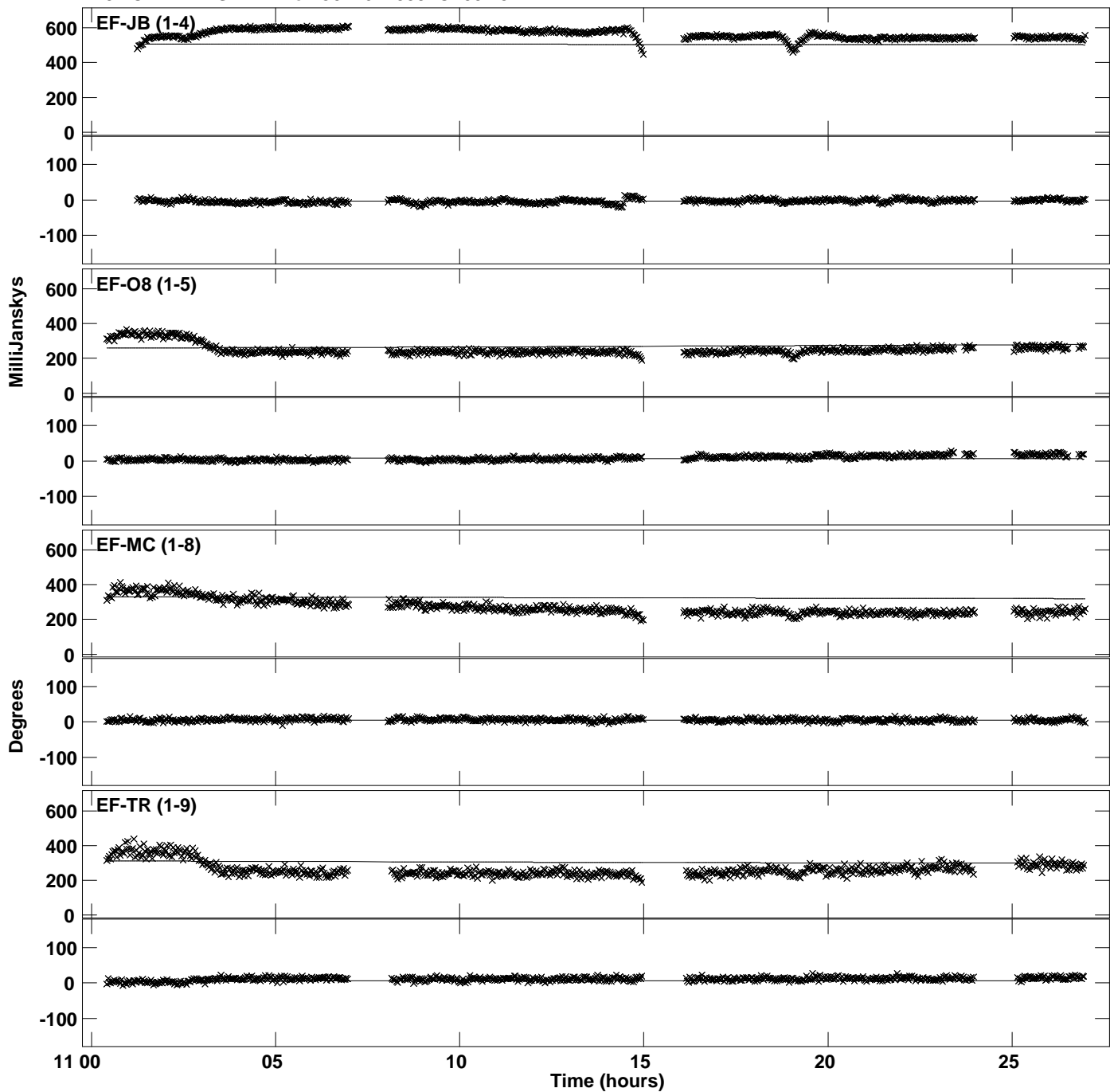
Plot file version 7 created 13-AUG-2015 16:37:20
Amplitude and Phase vs Time for J0126+2559.MULTI.1 CL # 3
IF 4 CHAN 1 STK LL of J0126+2559.ICL001.3



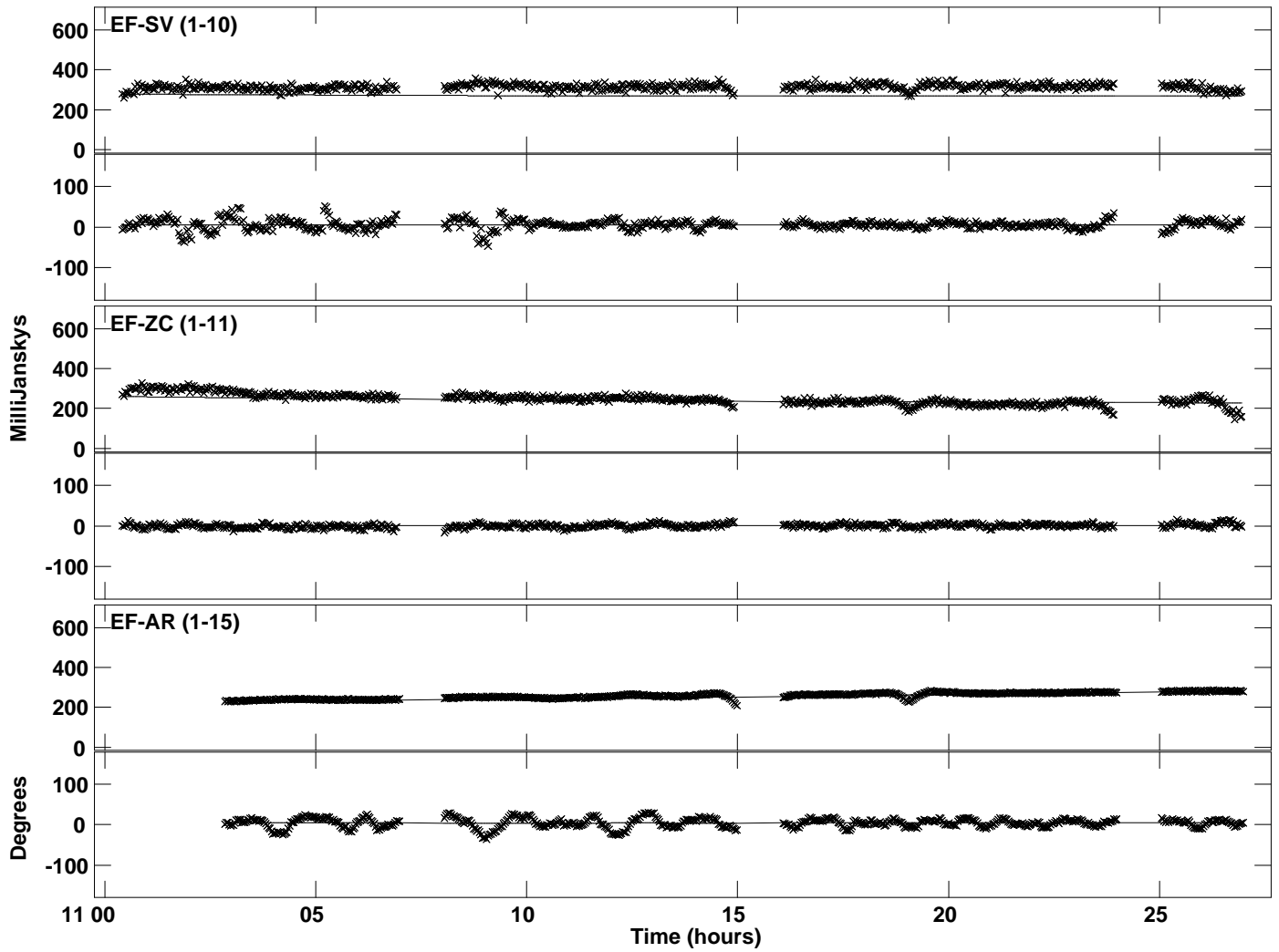
PLot file version 8 created 13-AUG-2015 16:37:20
Amplitude andPhase vs Time for J0126+2559.MULTI.1 CL # 3
IF 4 CHAN 1 STK LL of J0126+2559.ICL001.3



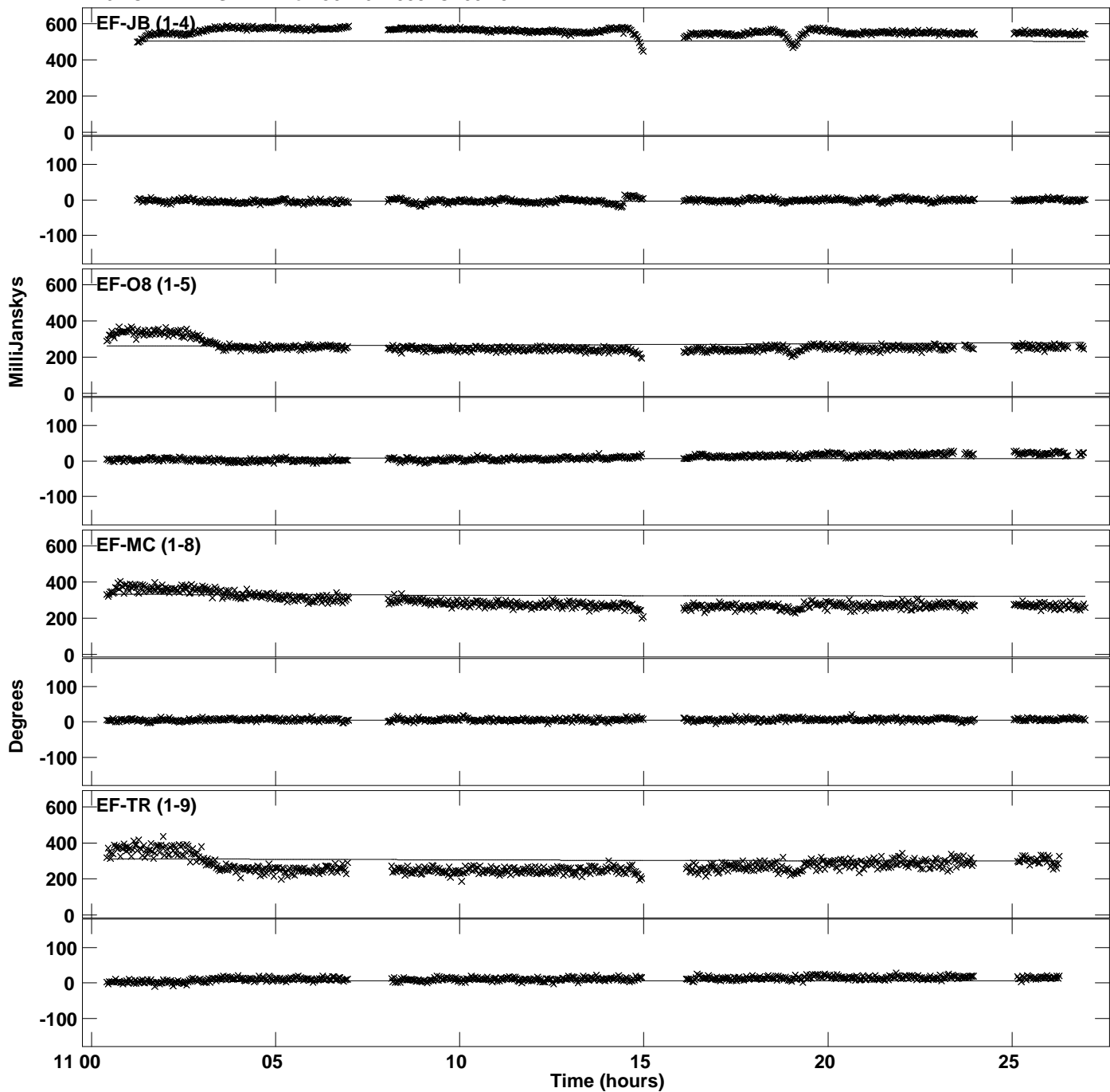
Plot file version 9 created 13-AUG-2015 16:37:20
Amplitude and Phase vs Time for J0126+2559.MULTI.1 CL # 3
IF 5 CHAN 1 STK LL of J0126+2559.ICL001.3



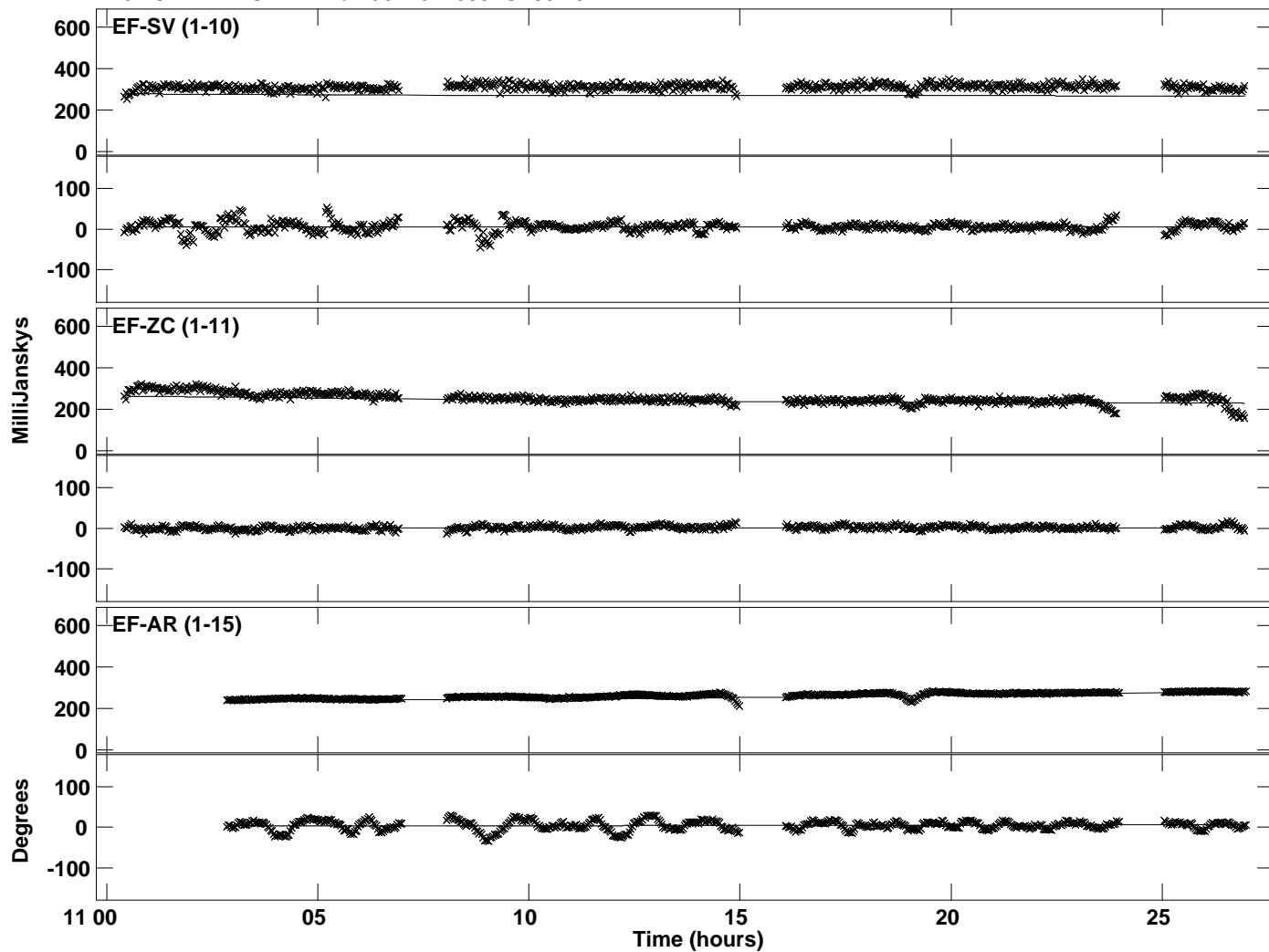
Plot file version 10 created 13-AUG-2015 16:37:20
Amplitude and Phase vs Time for J0126+2559.MULTI.1 CL # 3
IF 5 CHAN 1 STK LL of J0126+2559.ICL001.3



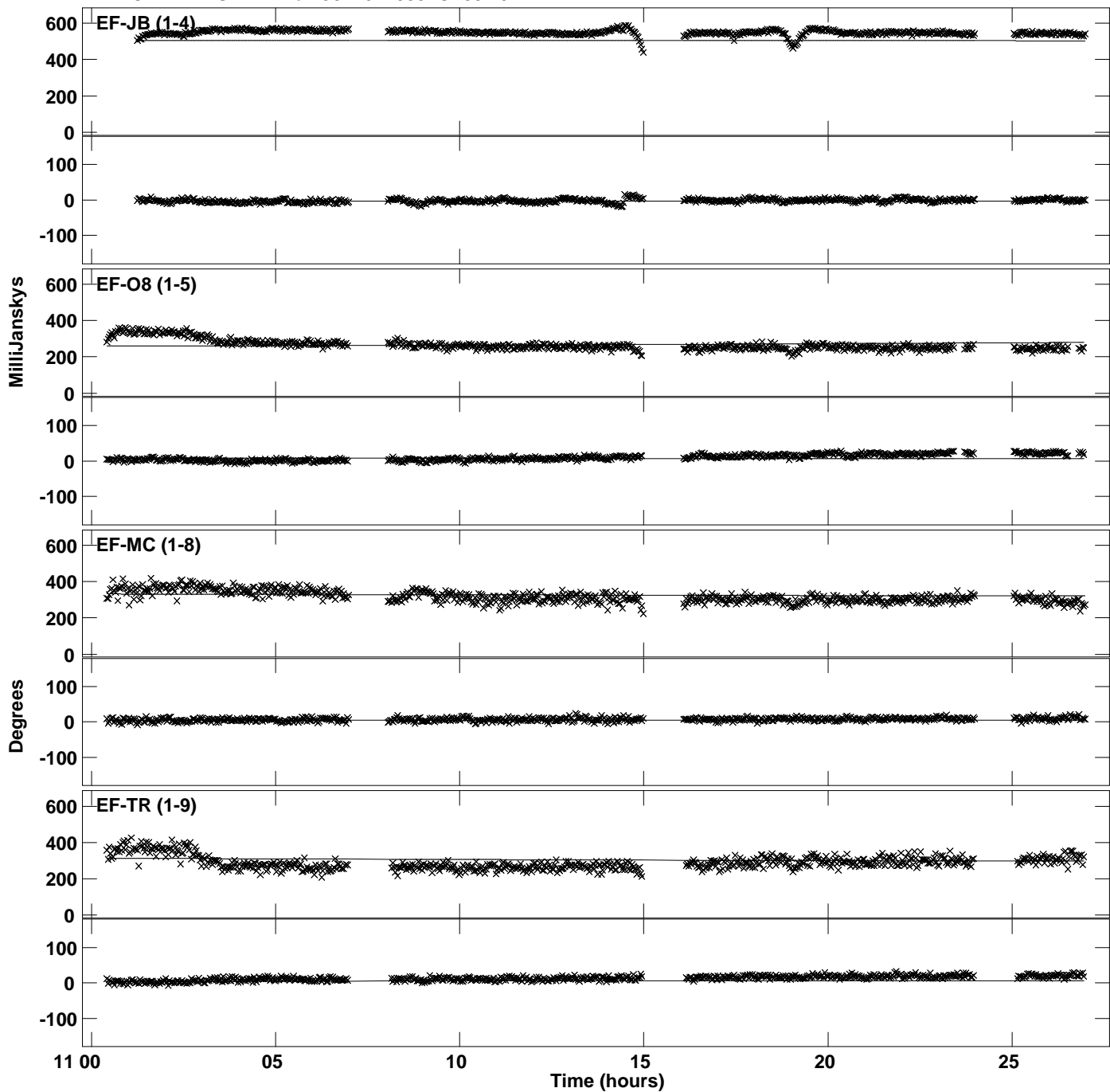
Plot file version 11 created 13-AUG-2015 16:37:20
Amplitude and Phase vs Time for J0126+2559.MULTI.1 CL # 3
IF 6 CHAN 1 STK LL of J0126+2559.ICL001.3



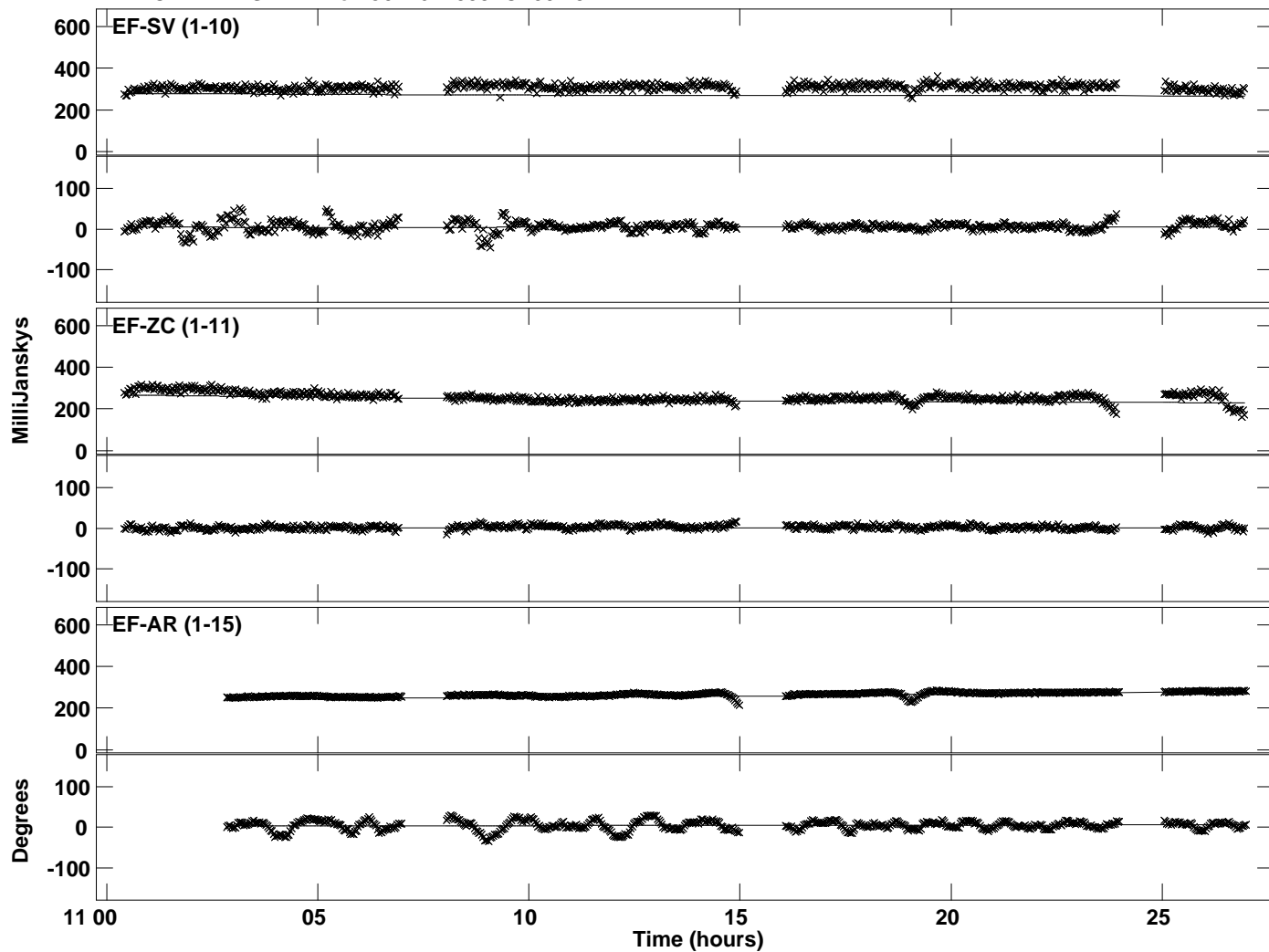
Plot file version 12 created 13-AUG-2015 16:37:20
Amplitude and Phase vs Time for J0126+2559.MULTI.1 CL # 3
IF 6 CHAN 1 STK LL of J0126+2559.ICL001.3



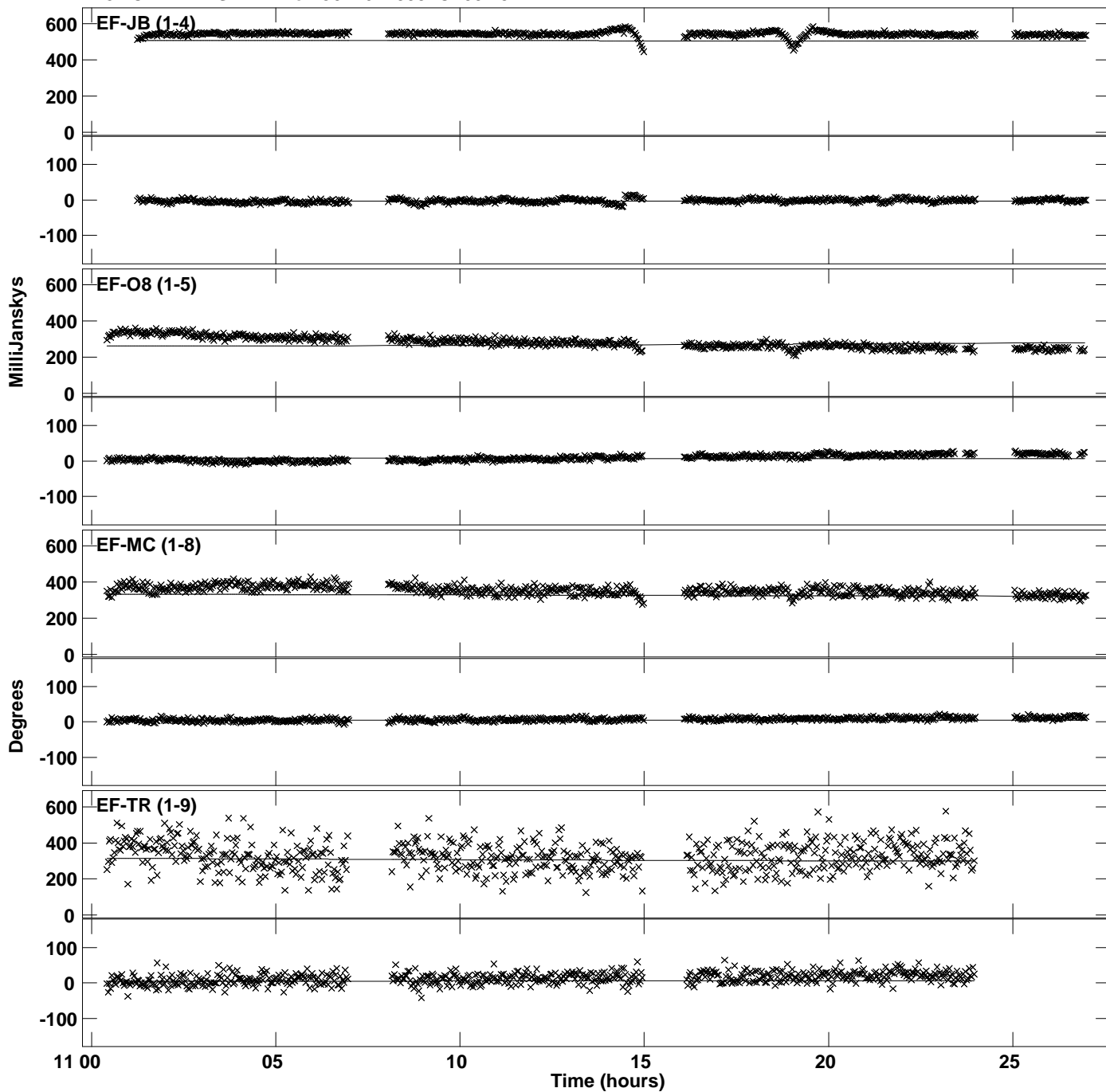
Plot file version 13 created 13-AUG-2015 16:37:21
Amplitude andPhase vs Time for J0126+2559.MULTI.1 CL # 3
IF 7 CHAN 1 STK LL of J0126+2559.ICL001.3



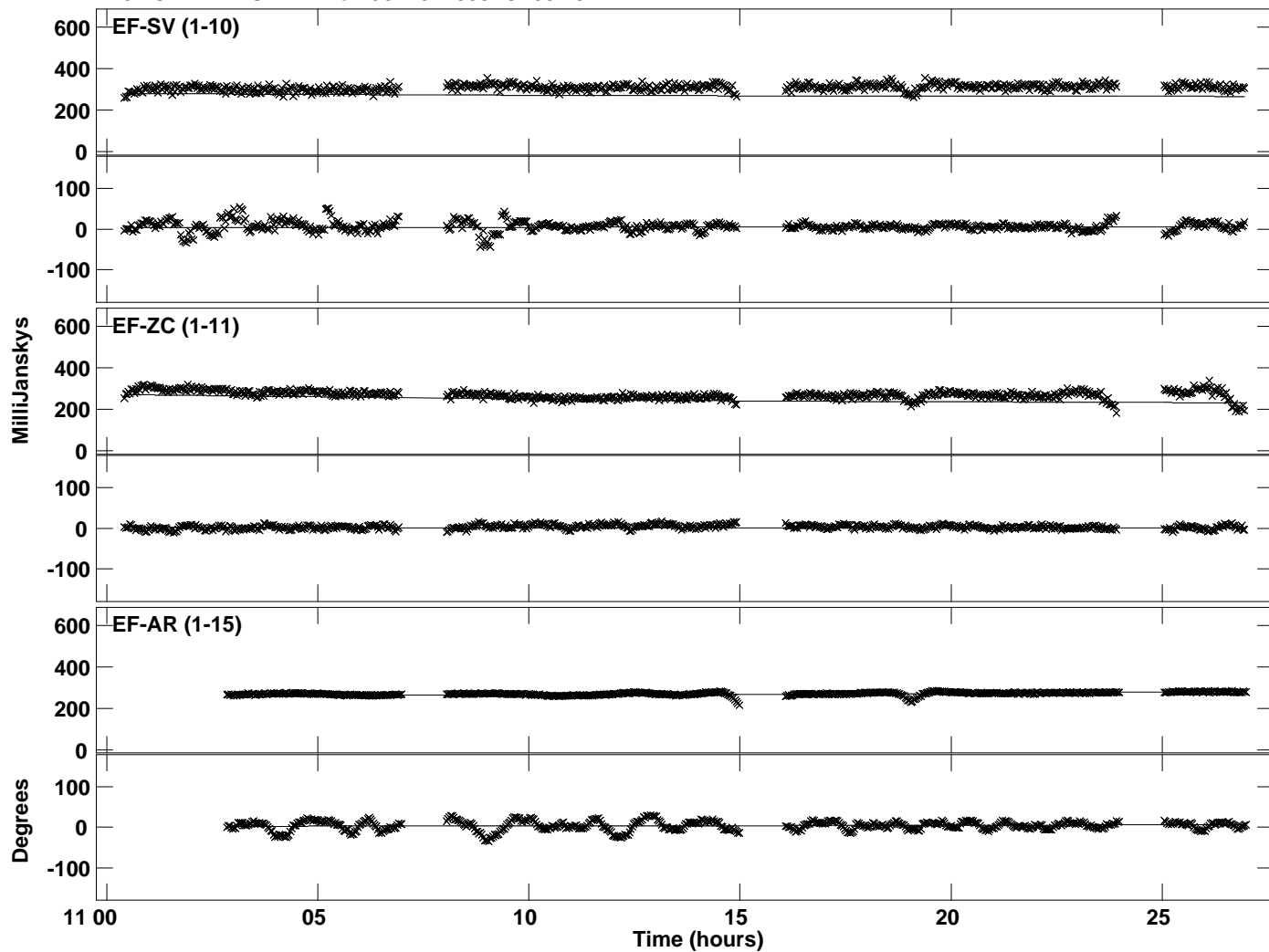
PLot file version 14 created 13-AUG-2015 16:37:21
Amplitude andPhase vs Time for J0126+2559.MULTI.1 CL # 3
IF 7 CHAN 1 STK LL of J0126+2559.ICL001.3



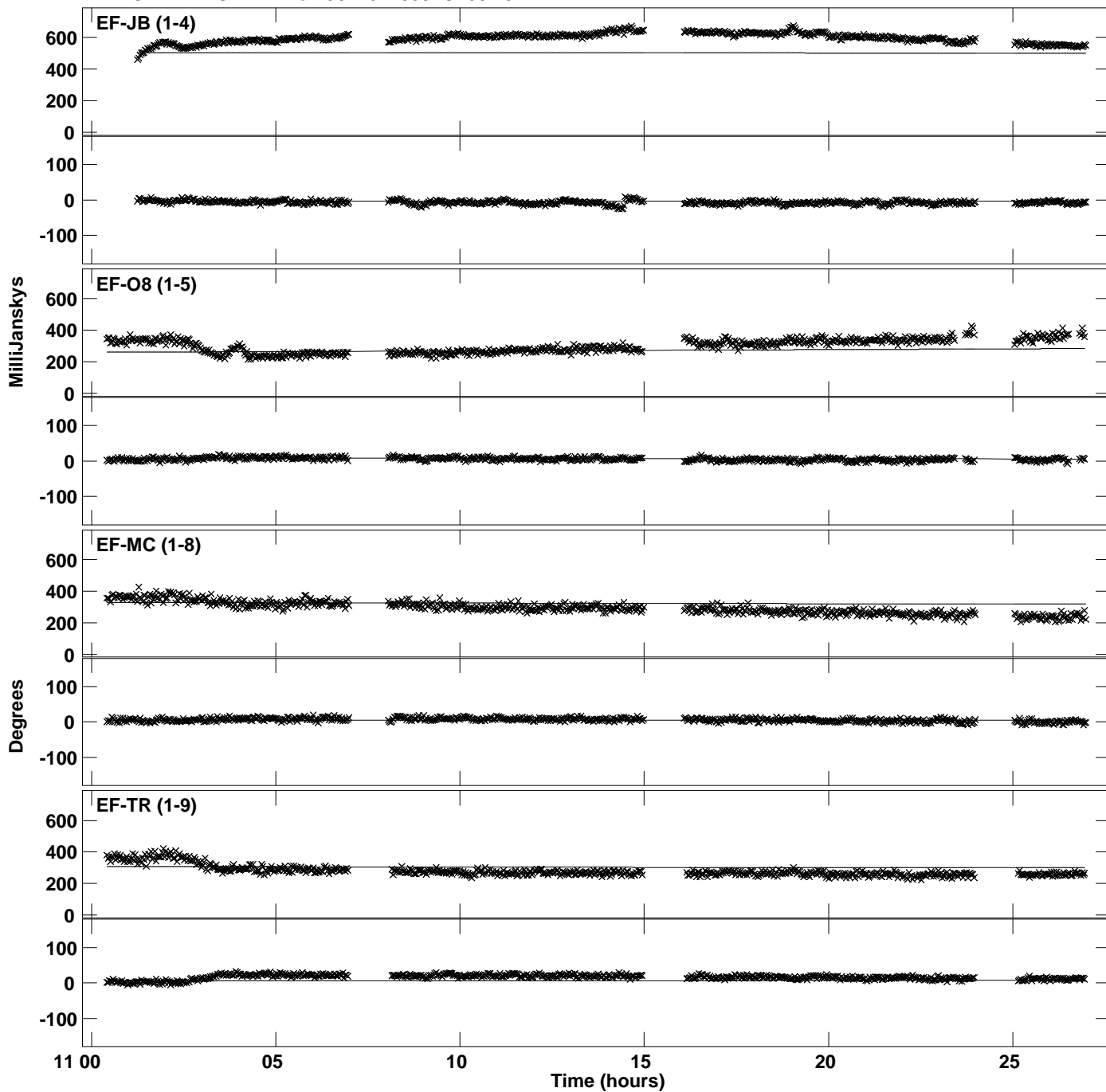
Plot file version 15 created 13-AUG-2015 16:37:21
Amplitude and Phase vs Time for J0126+2559.MULTI.1 CL # 3
IF 8 CHAN 1 STK LL of J0126+2559.ICL001.3



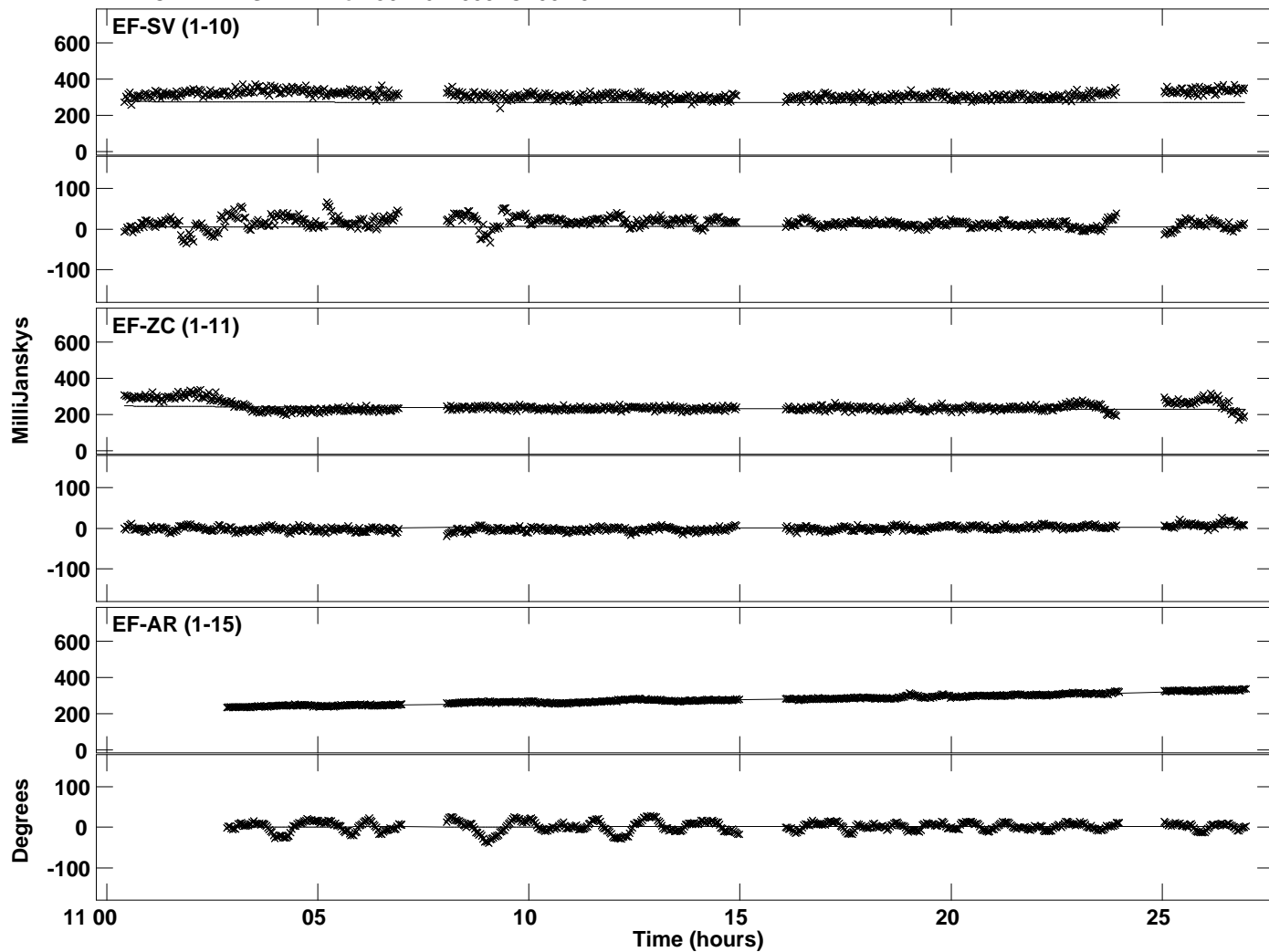
PLot file version 16 created 13-AUG-2015 16:37:21
Amplitude andPhase vs Time for J0126+2559.MULTI.1 CL # 3
IF 8 CHAN 1 STK LL of J0126+2559.ICL001.3



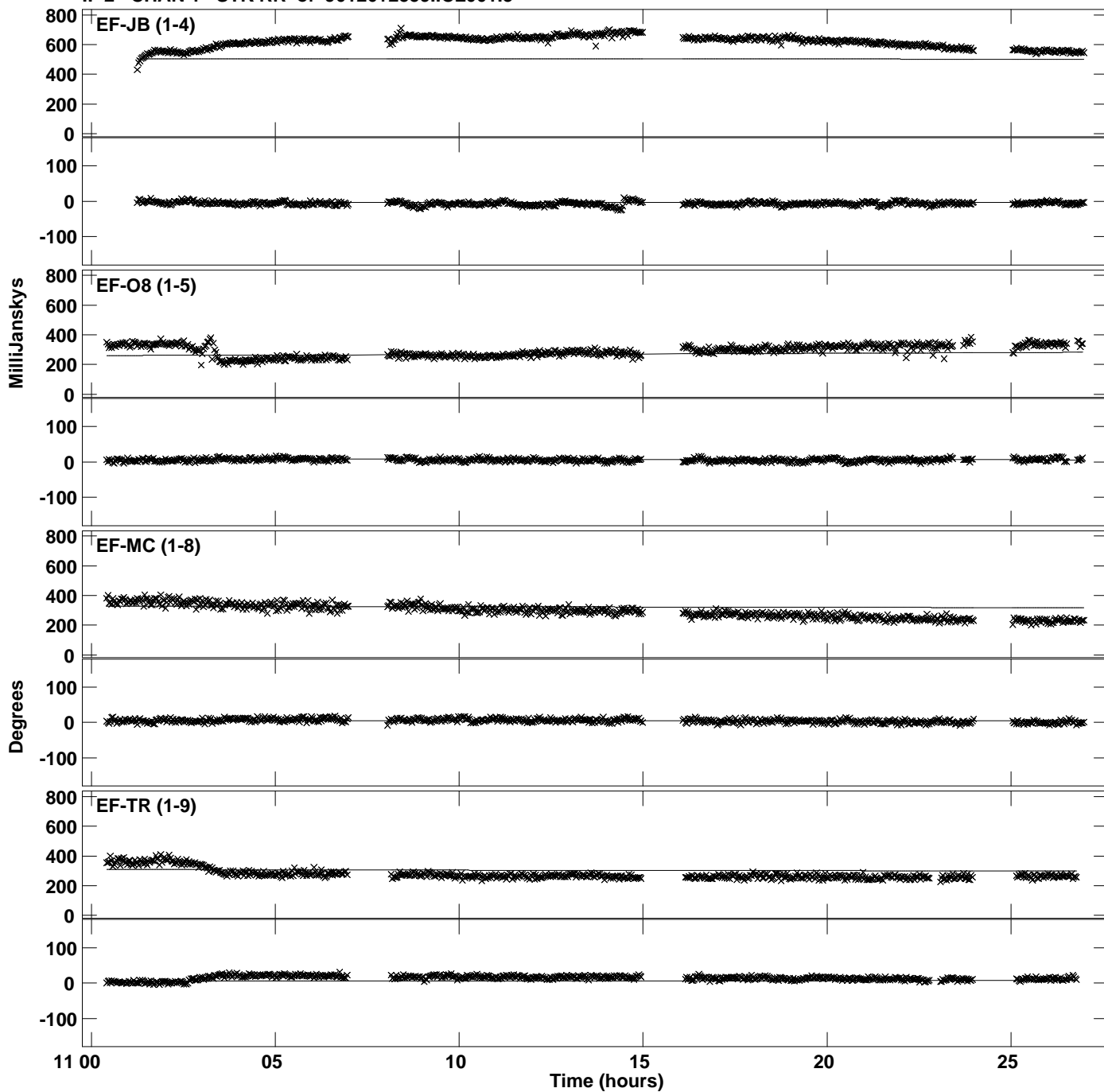
Plot file version 17 created 13-AUG-2015 16:37:21
Amplitude and Phase vs Time for J0126+2559.MULTI.1 CL # 3
IF 1 CHAN 1 STK RR of J0126+2559.ICL001.3



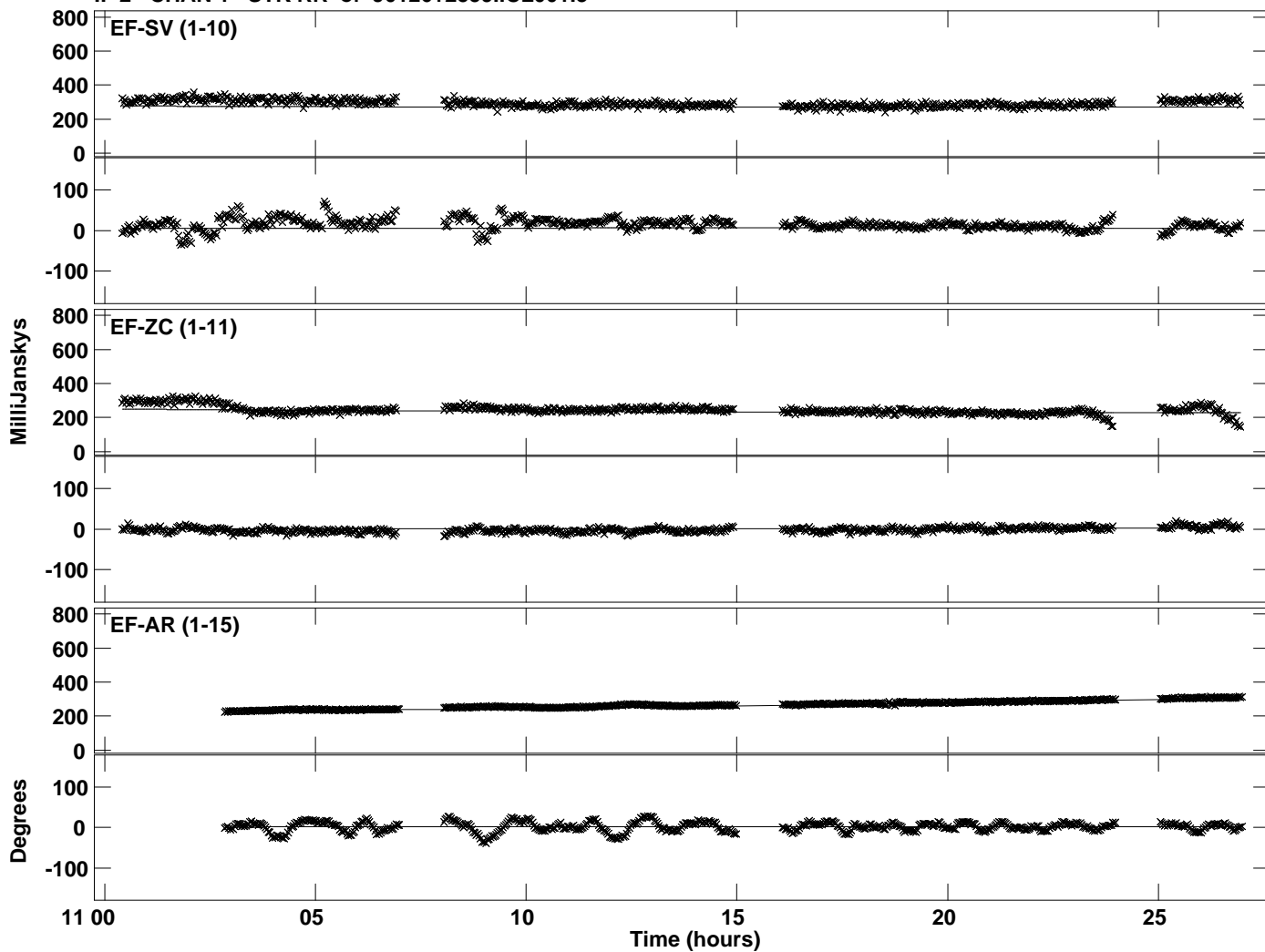
PLot file version 18 created 13-AUG-2015 16:37:21
Amplitude andPhase vs Time for J0126+2559.MULTI.1 CL # 3
IF 1 CHAN 1 STK RR of J0126+2559.ICL001.3



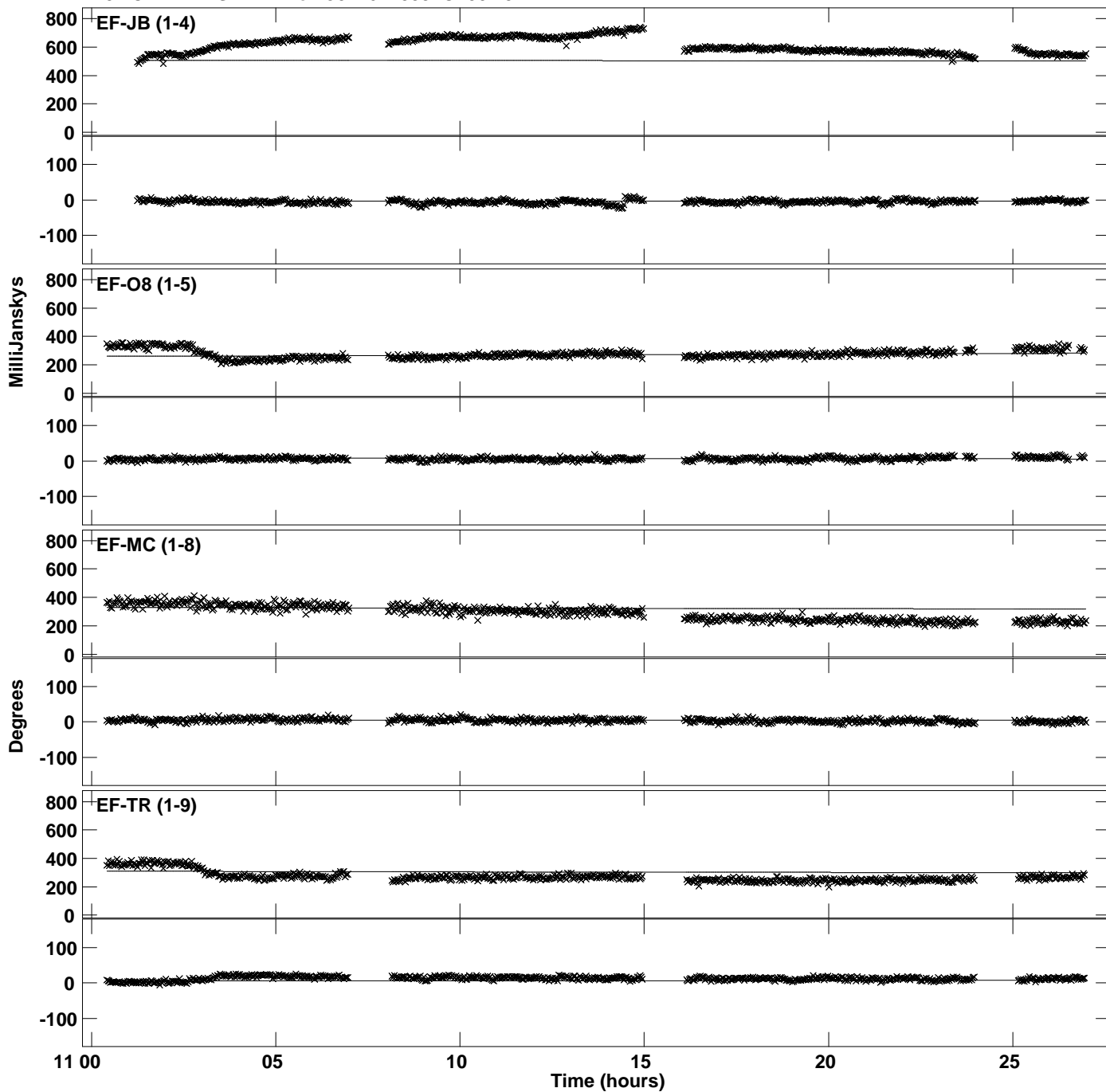
Plot file version 19 created 13-AUG-2015 16:37:21
Amplitude andPhase vs Time for J0126+2559.MULTI.1 CL # 3
IF 2 CHAN 1 STK RR of J0126+2559.ICL001.3



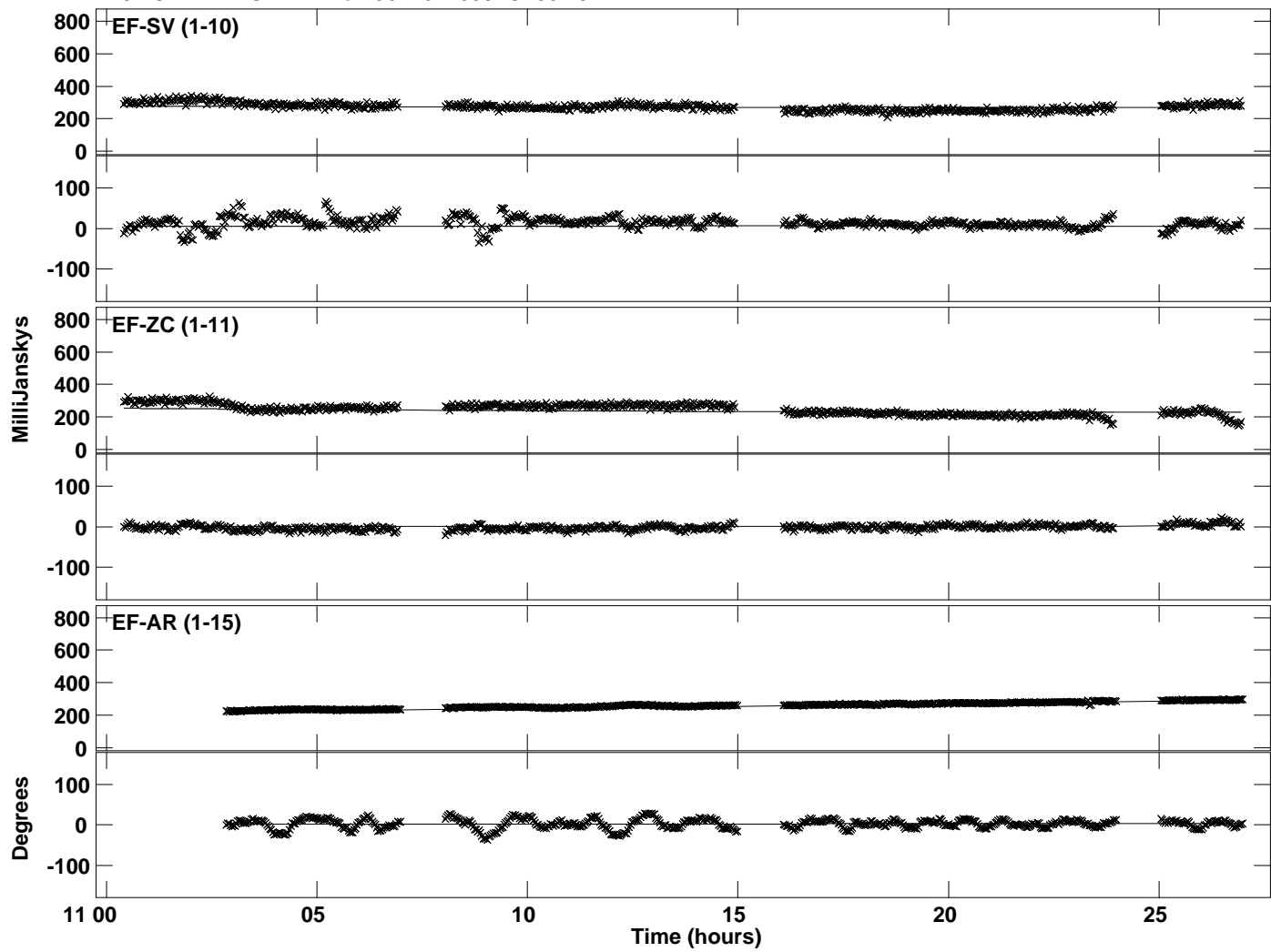
Plot file version 20 created 13-AUG-2015 16:37:21
Amplitude and Phase vs Time for J0126+2559.MULTI.1 CL # 3
IF 2 CHAN 1 STK RR of J0126+2559.ICL001.3



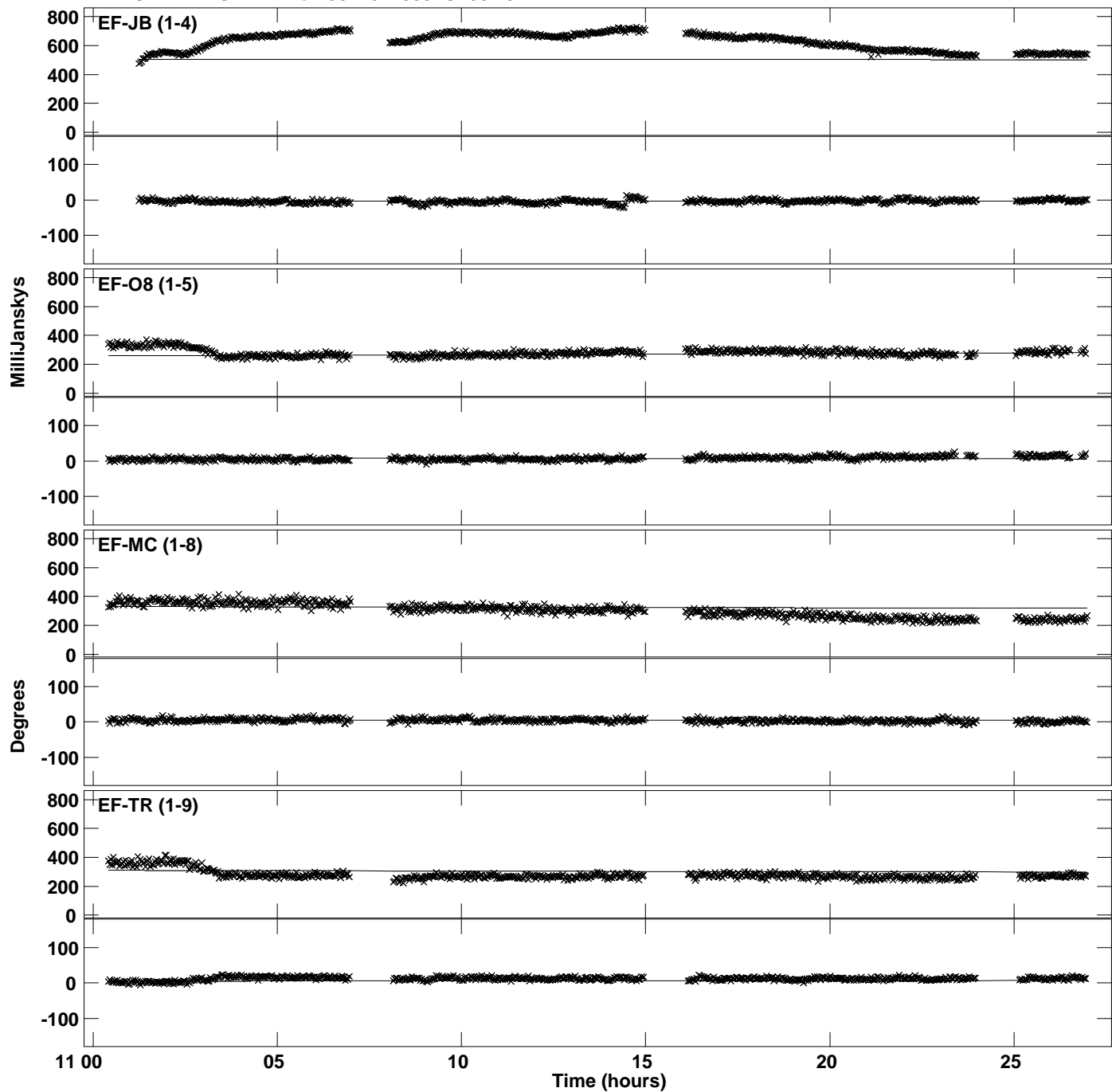
Plot file version 21 created 13-AUG-2015 16:37:22
Amplitude and Phase vs Time for J0126+2559.MULTI.1 CL # 3
IF 3 CHAN 1 STK RR of J0126+2559.ICL001.3



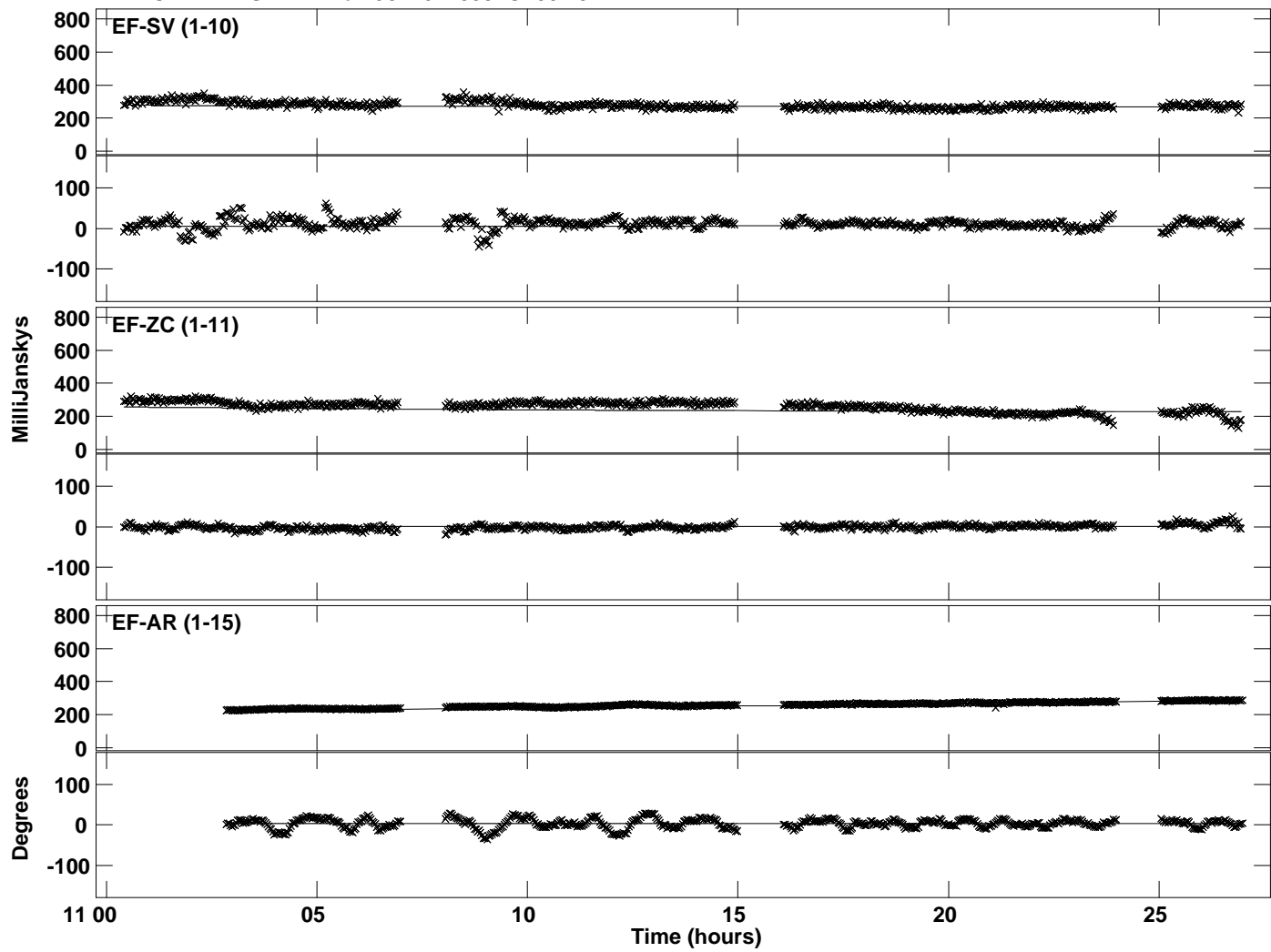
PLot file version 22 created 13-AUG-2015 16:37:22
Amplitude andPhase vs Time for J0126+2559.MULTI.1 CL # 3
IF 3 CHAN 1 STK RR of J0126+2559.ICL001.3



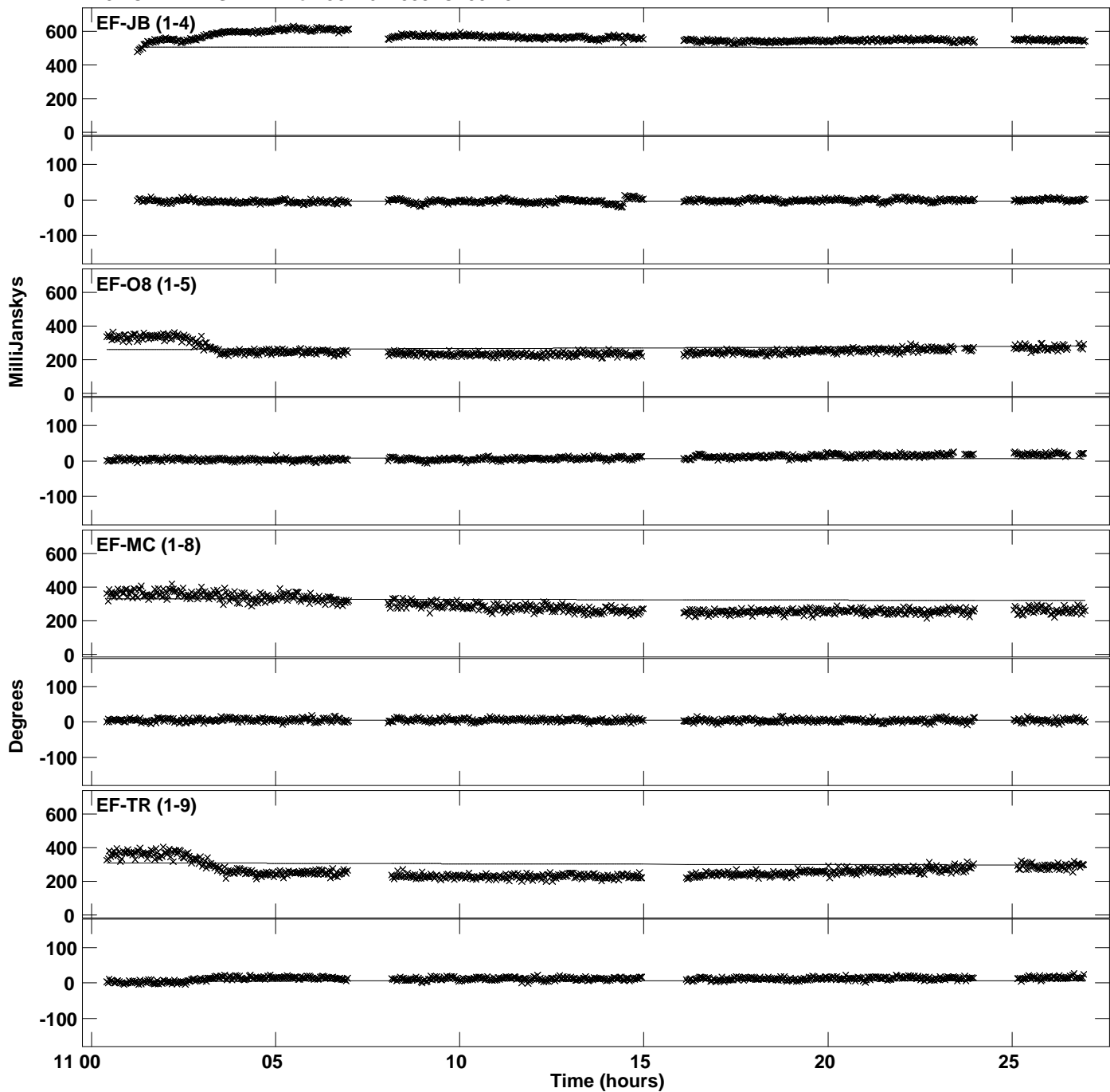
Plot file version 23 created 13-AUG-2015 16:37:22
Amplitude and Phase vs Time for J0126+2559.MULTI.1 CL # 3
IF 4 CHAN 1 STK RR of J0126+2559.ICL001.3



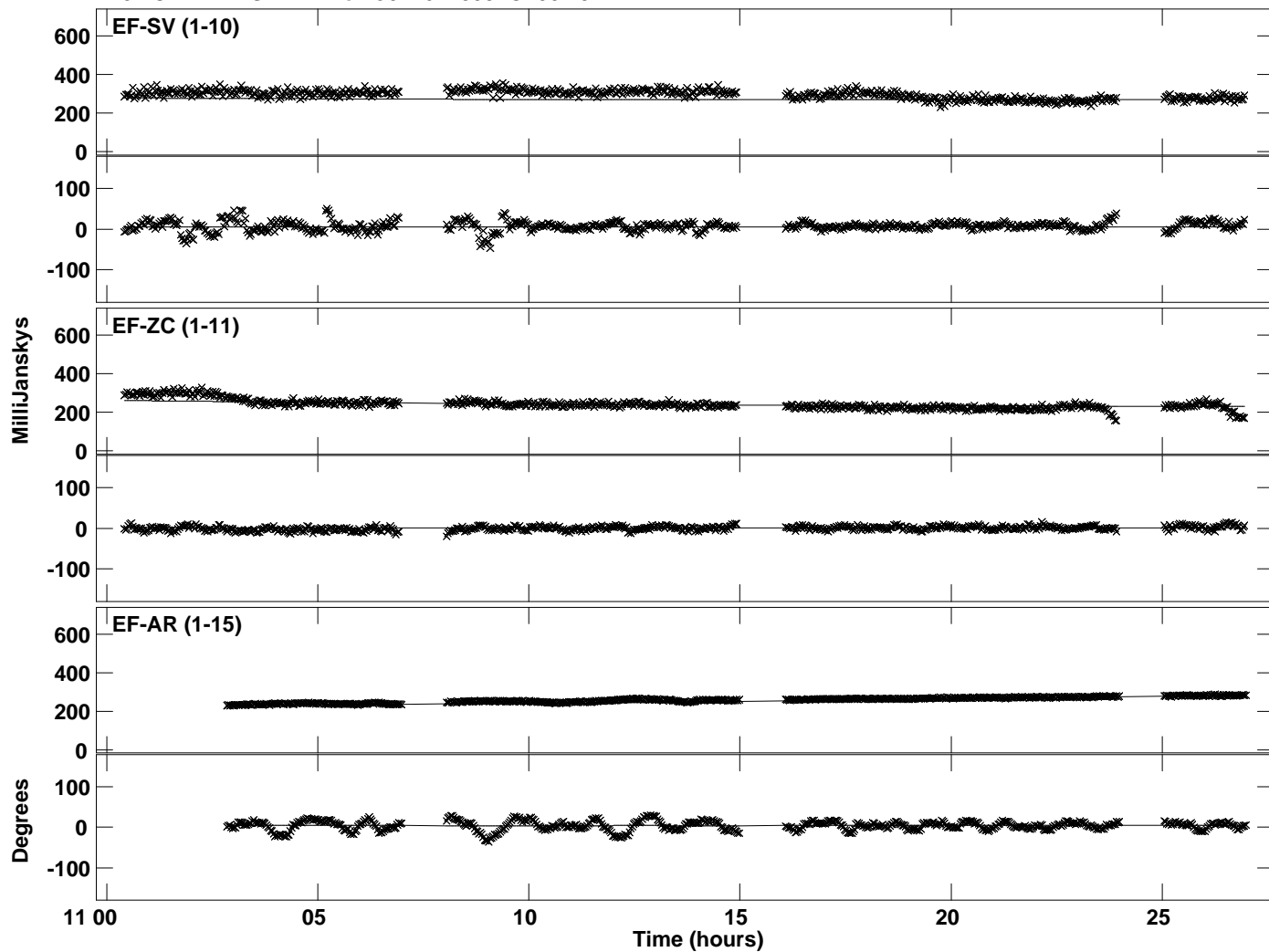
PLot file version 24 created 13-AUG-2015 16:37:22
Amplitude andPhase vs Time for J0126+2559.MULTI.1 CL # 3
IF 4 CHAN 1 STK RR of J0126+2559.ICL001.3



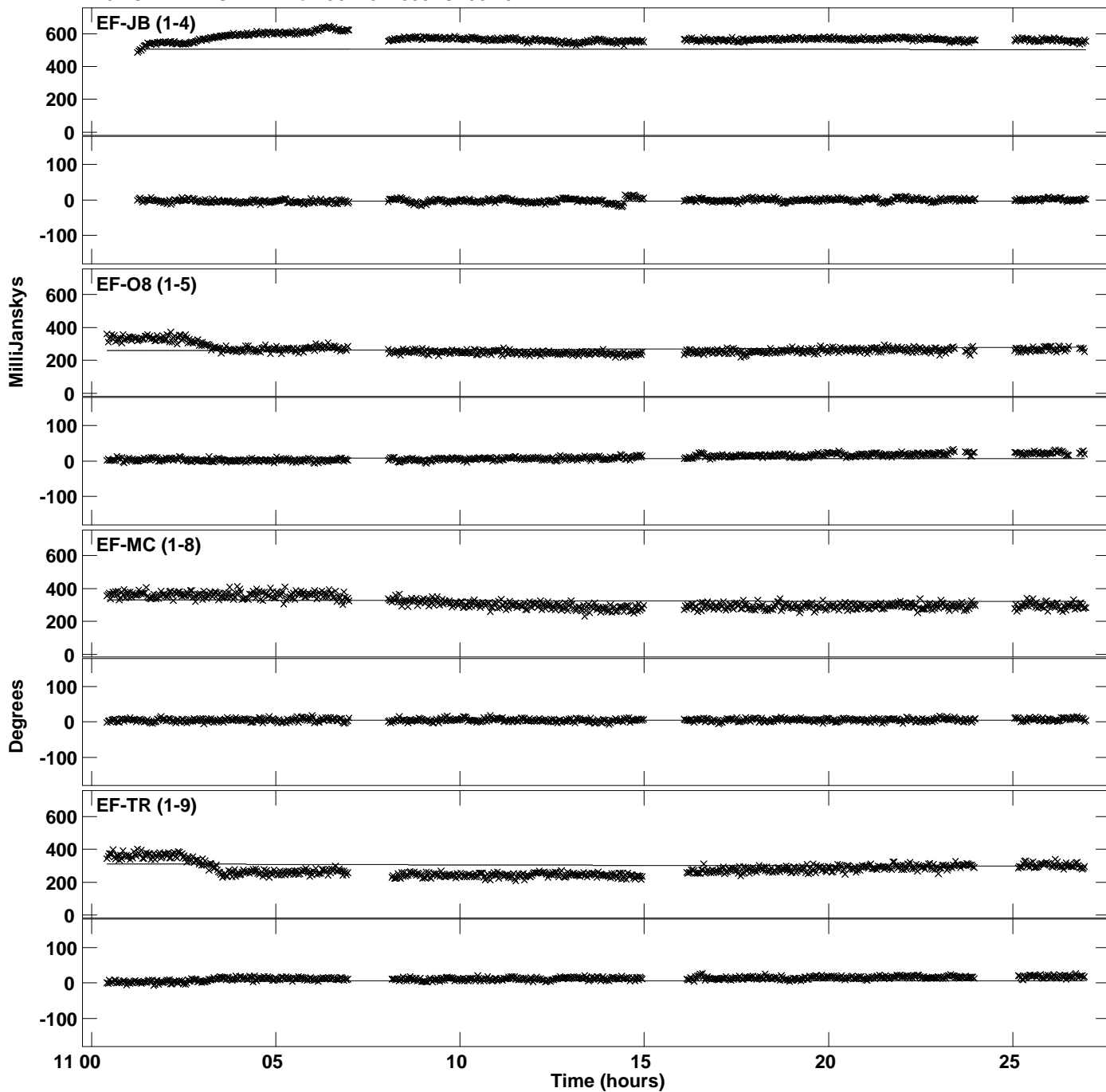
Plot file version 25 created 13-AUG-2015 16:37:22
Amplitude and Phase vs Time for J0126+2559.MULTI.1 CL # 3
IF 5 CHAN 1 STK RR of J0126+2559.ICL001.3



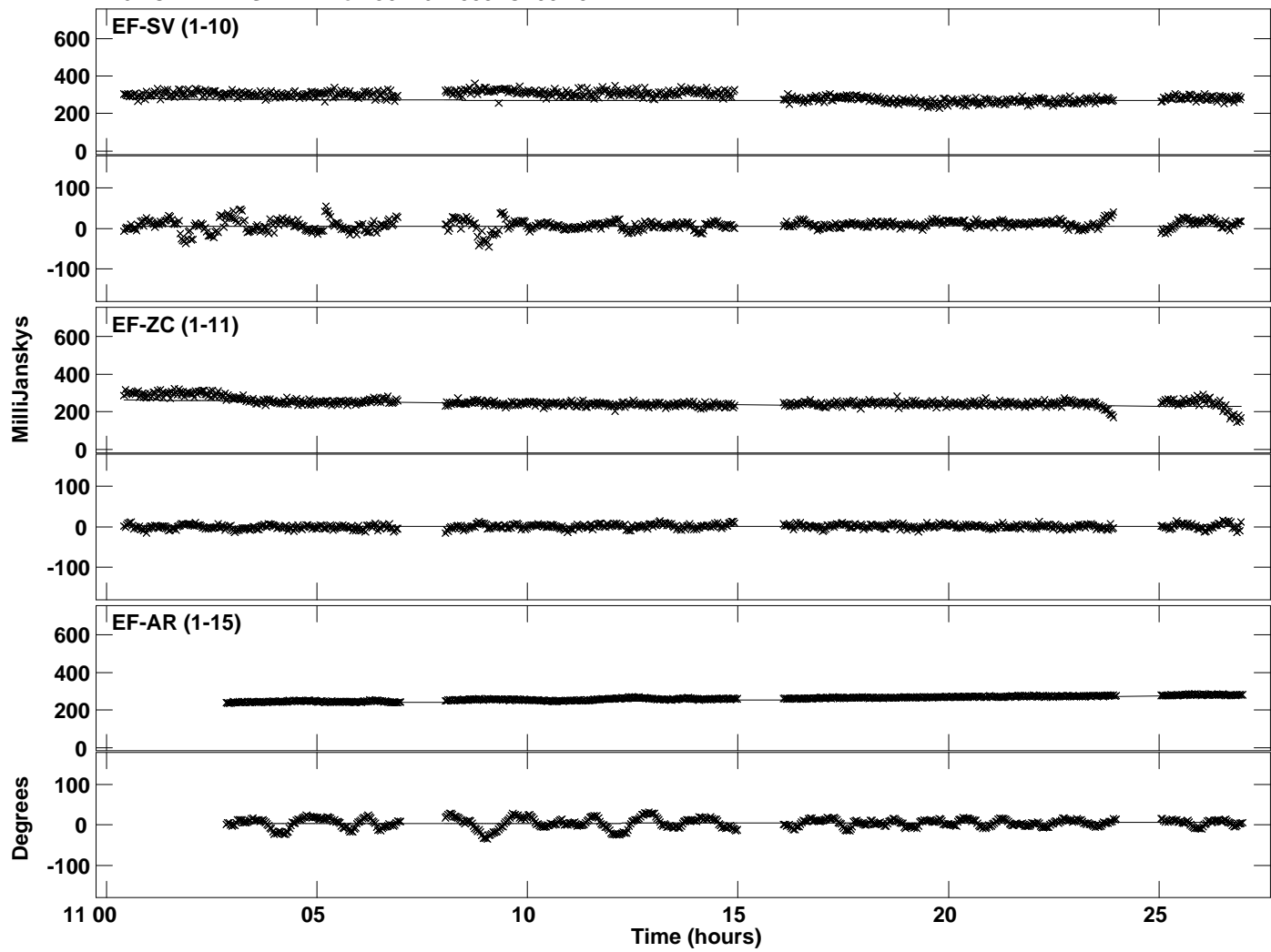
PLot file version 26 created 13-AUG-2015 16:37:22
Amplitude andPhase vs Time for J0126+2559.MULTI.1 CL # 3
IF 5 CHAN 1 STK RR of J0126+2559.ICL001.3



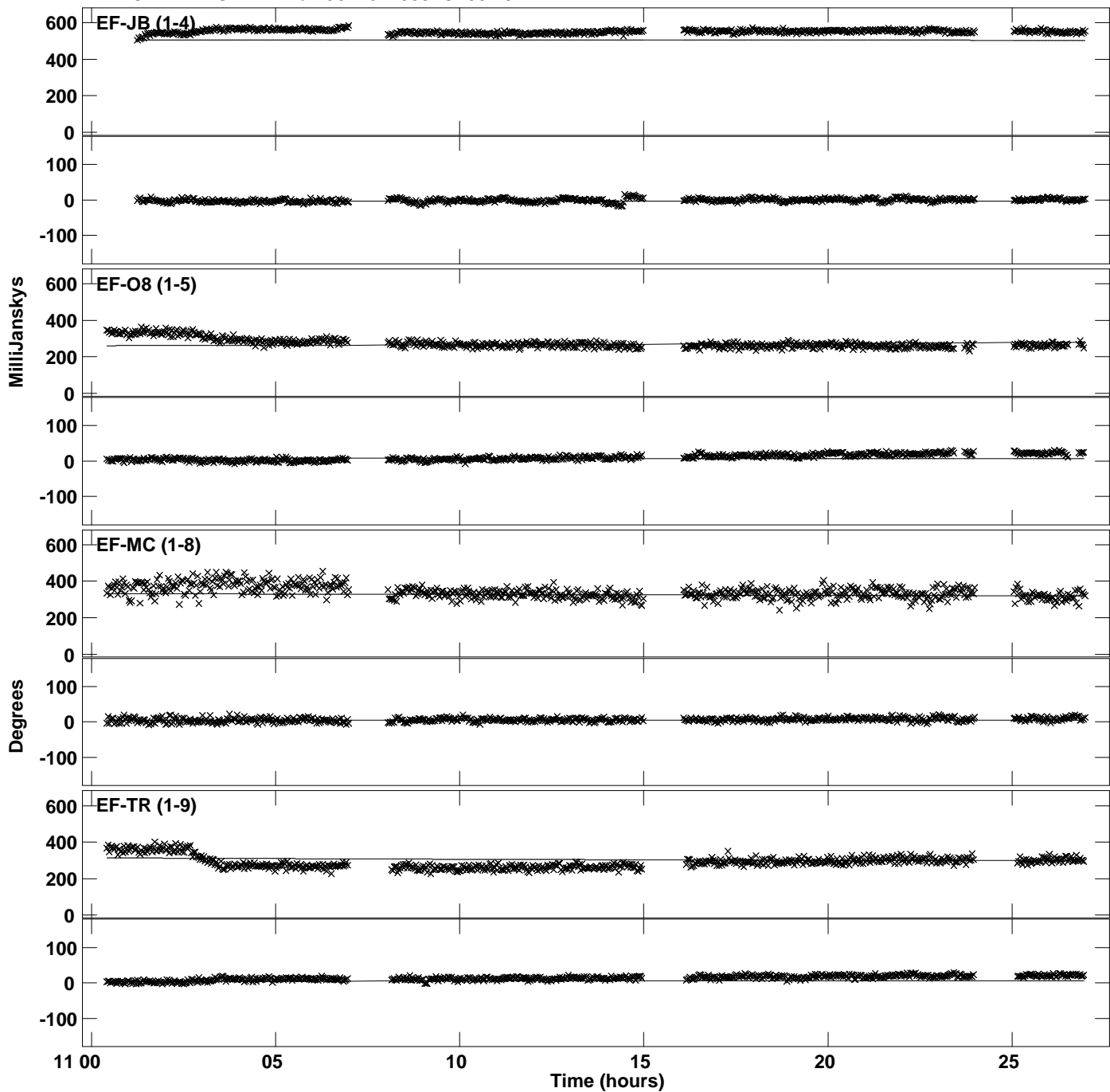
Plot file version 27 created 13-AUG-2015 16:37:22
Amplitude and Phase vs Time for J0126+2559.MULTI.1 CL # 3
IF 6 CHAN 1 STK RR of J0126+2559.ICL001.3



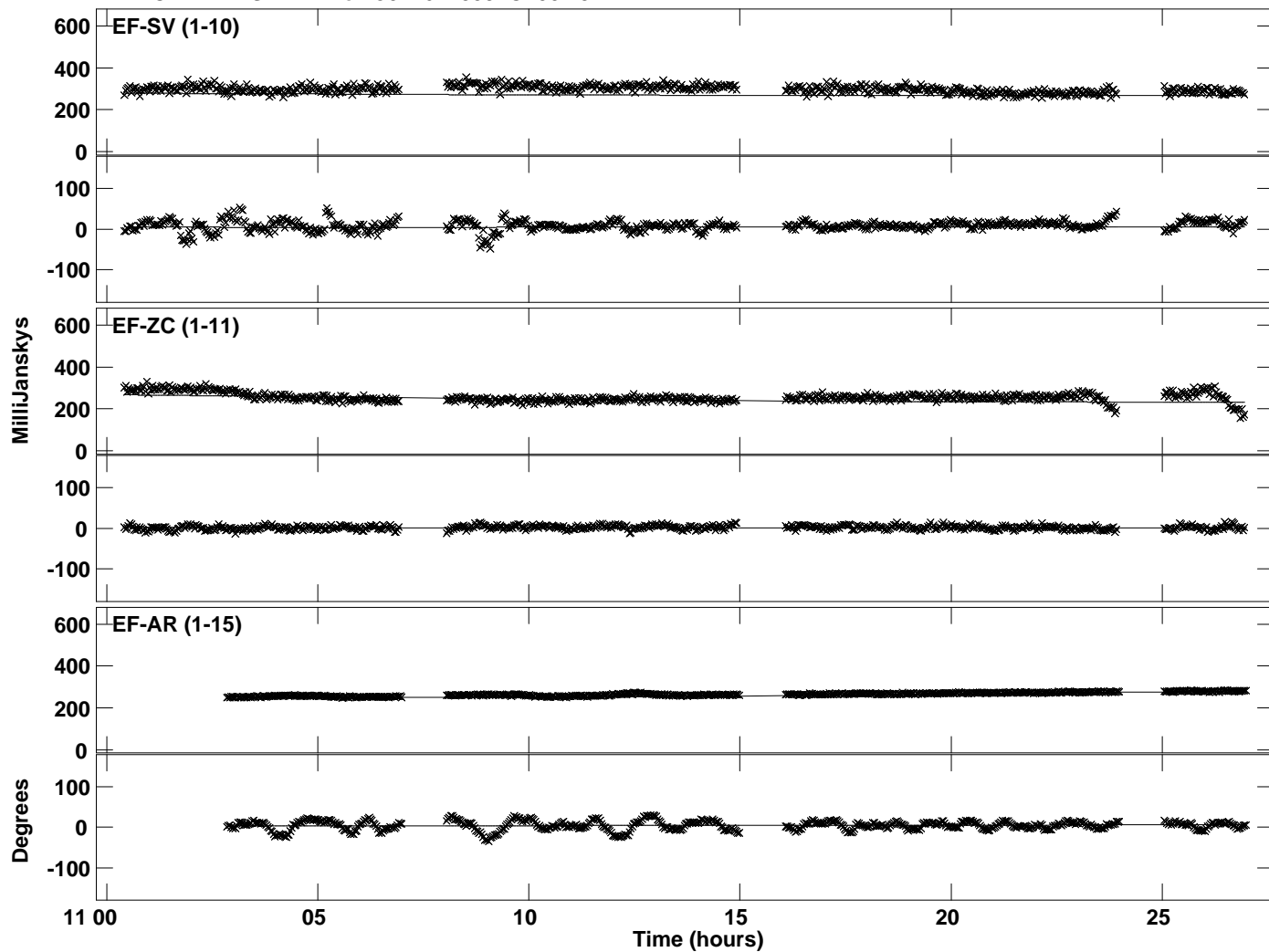
PLot file version 28 created 13-AUG-2015 16:37:22
Amplitude andPhase vs Time for J0126+2559.MULTI.1 CL # 3
IF 6 CHAN 1 STK RR of J0126+2559.ICL001.3



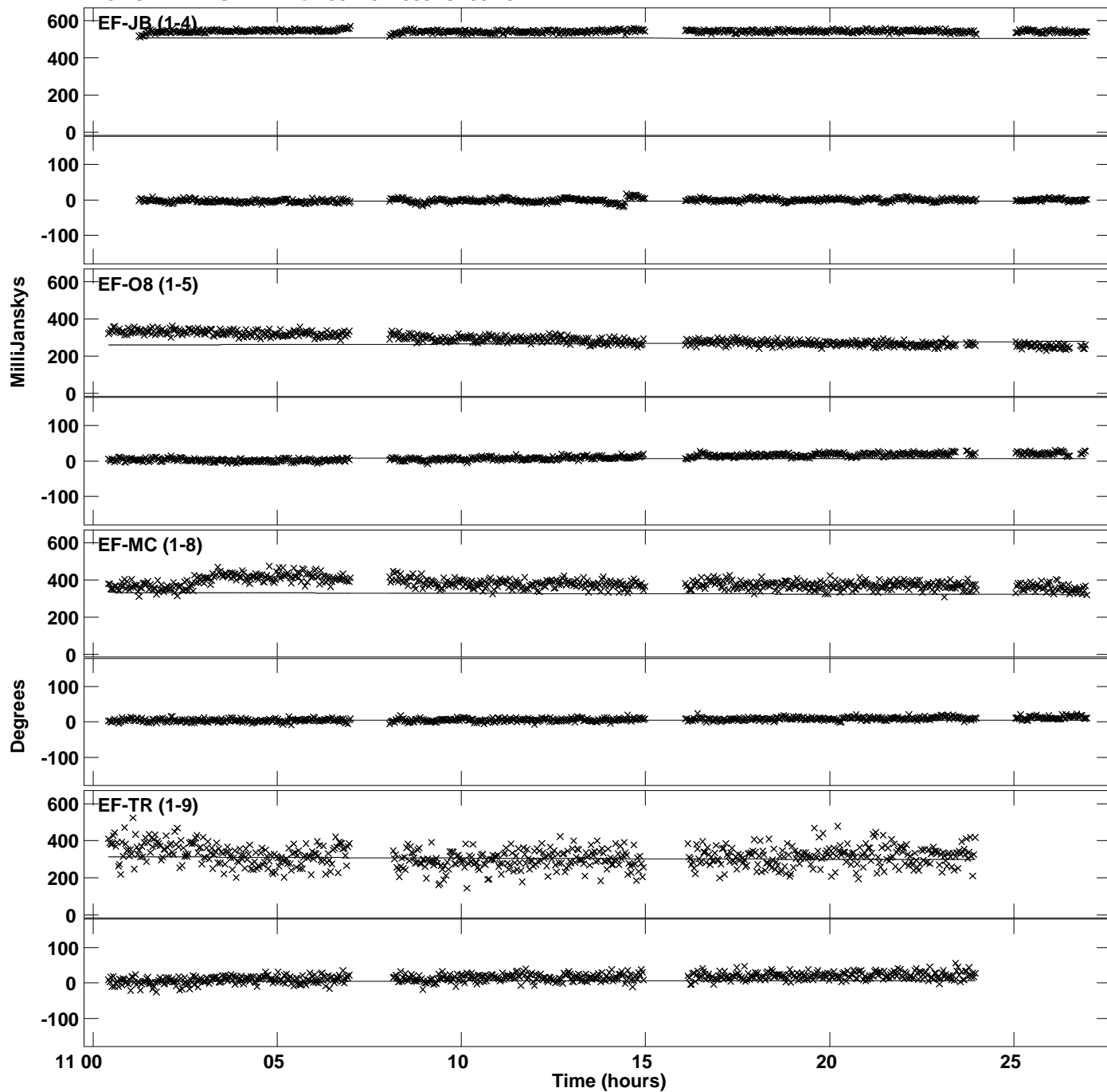
Plot file version 29 created 13-AUG-2015 16:37:23
Amplitude and Phase vs Time for J0126+2559.MULTI.1 CL # 3
IF 7 CHAN 1 STK RR of J0126+2559.ICL001.3



PLot file version 30 created 13-AUG-2015 16:37:23
Amplitude andPhase vs Time for J0126+2559.MULTI.1 CL # 3
IF 7 CHAN 1 STK RR of J0126+2559.ICL001.3



Plot file version 31 created 13-AUG-2015 16:37:23
Amplitude and Phase vs Time for J0126+2559.MULTI.1 CL # 3
IF 8 CHAN 1 STK RR of J0126+2559.ICL001.3



PLot file version 32 created 13-AUG-2015 16:37:23
Amplitude andPhase vs Time for J0126+2559.MULTI.1 CL # 3
IF 8 CHAN 1 STK RR of J0126+2559.ICL001.3

