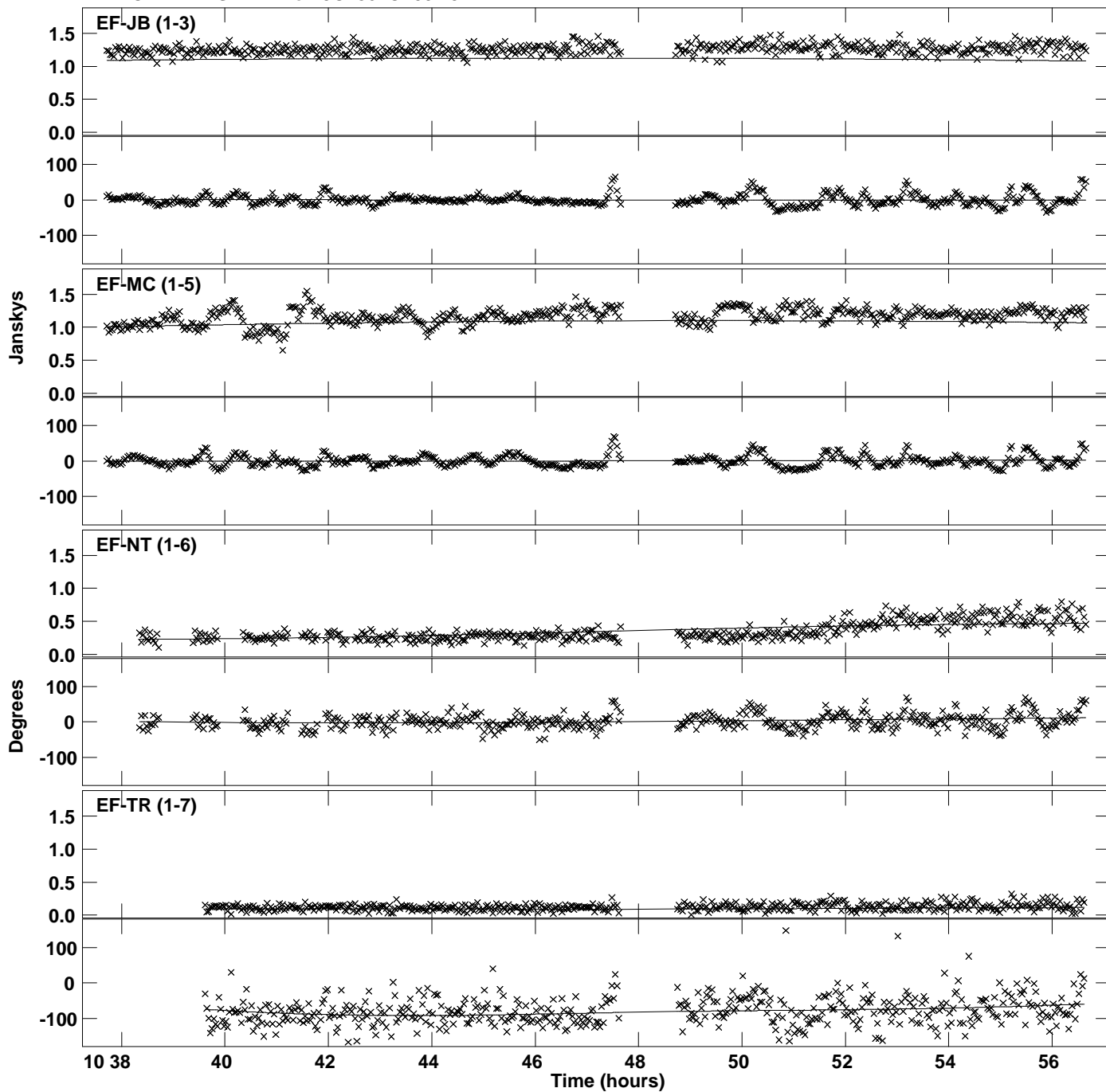
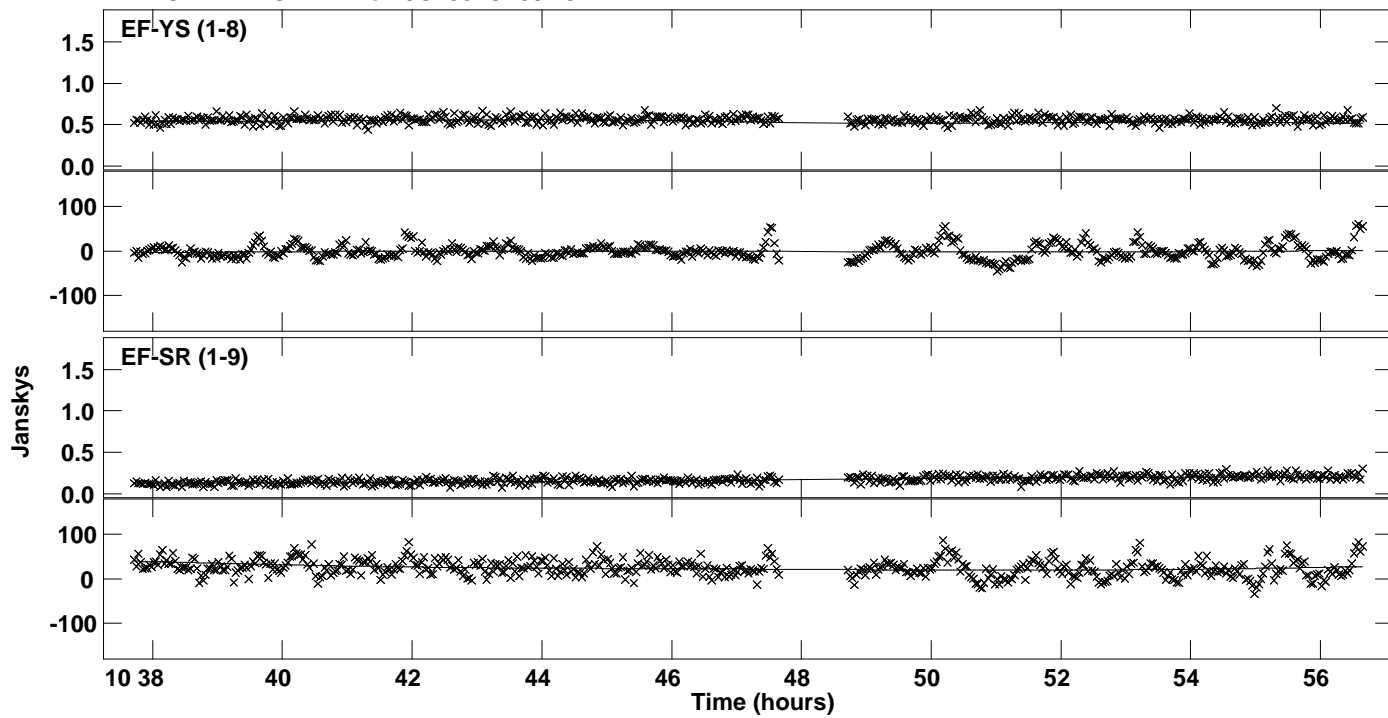


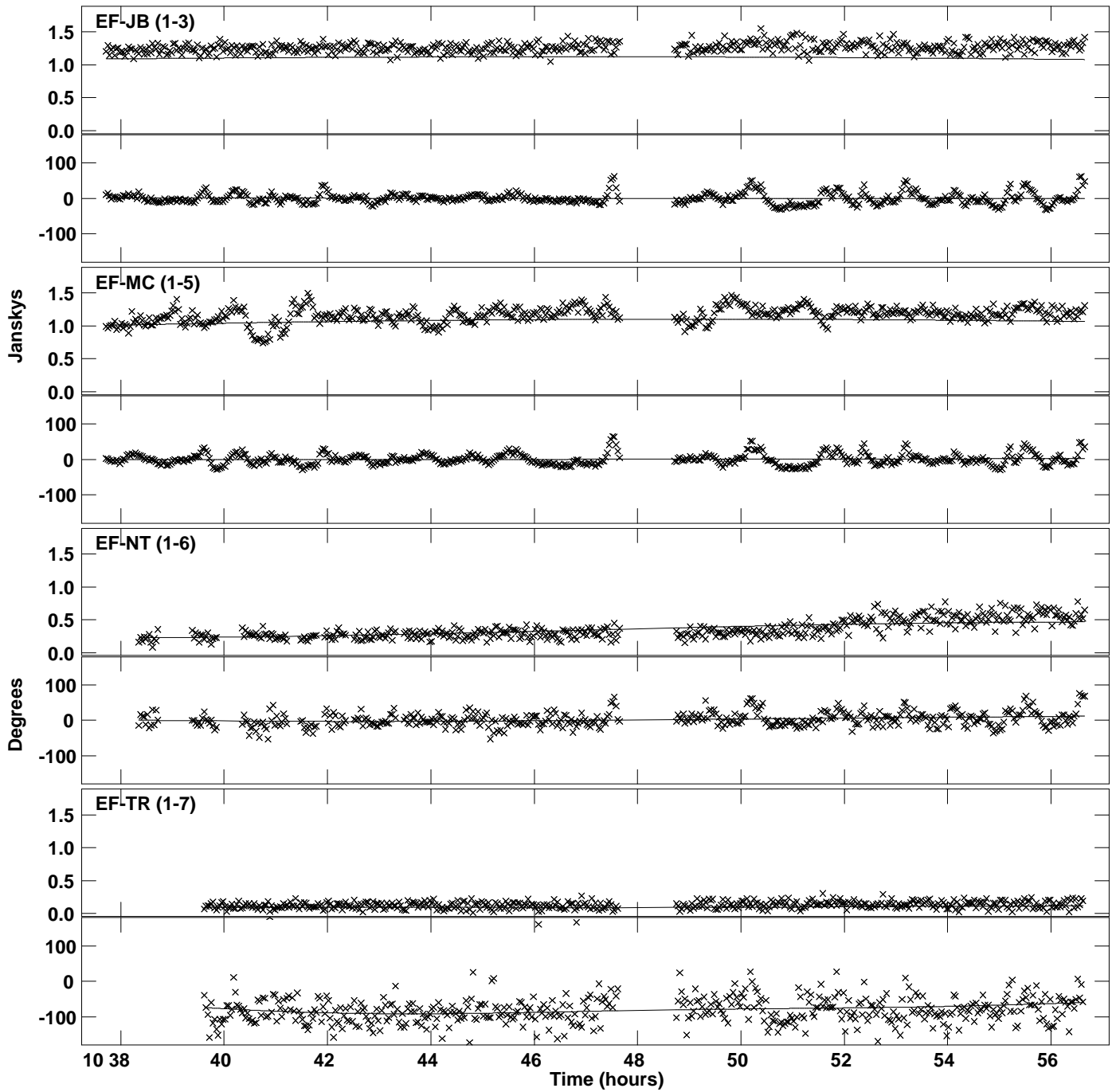
Plot file version 1 created 14-DEC-2015 12:42:53
Amplitude and Phase vs Time for 3C286.MULTI.1 CL # 3
IF 1 CHAN 1 STK LL of 3C286.ICL001.3



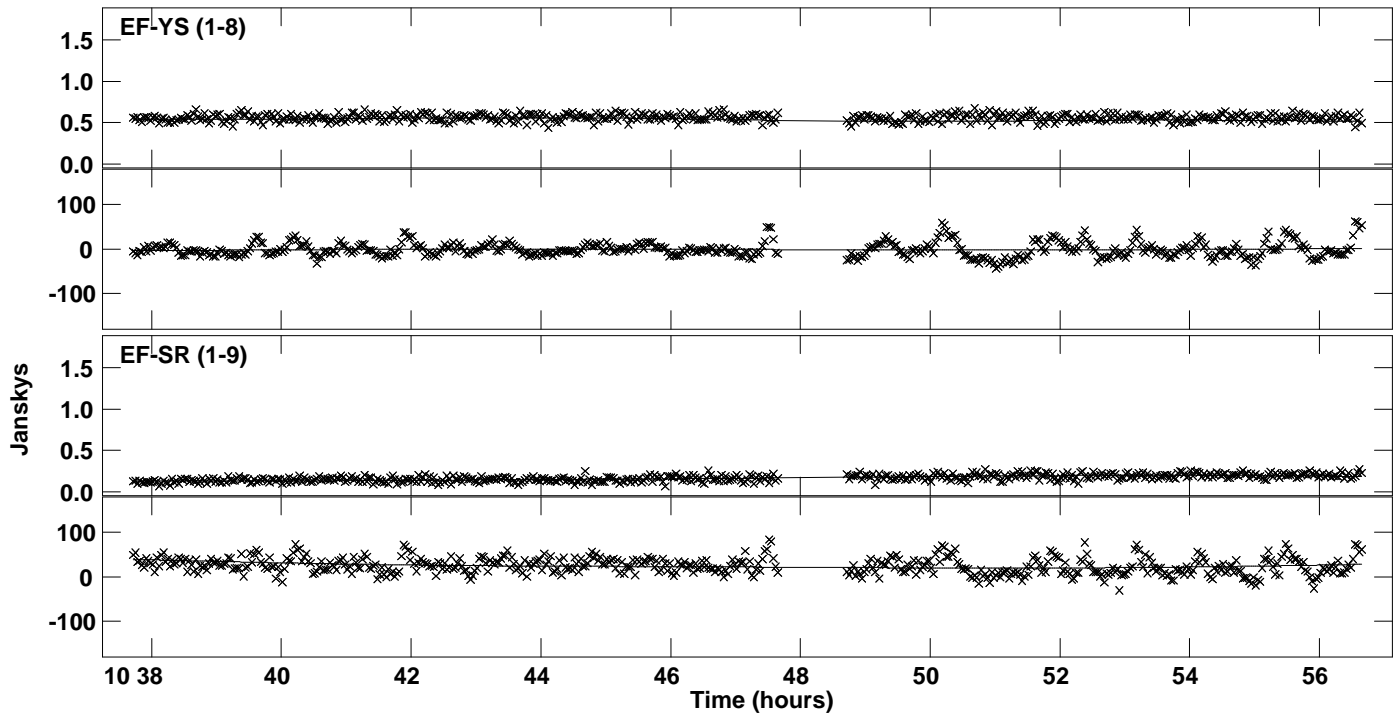
PLot file version 2 created 14-DEC-2015 12:42:53
Amplitude and Phase vs Time for 3C286.MULTI.1 CL # 3
IF 1 CHAN 1 STK LL of 3C286.ICL001.3



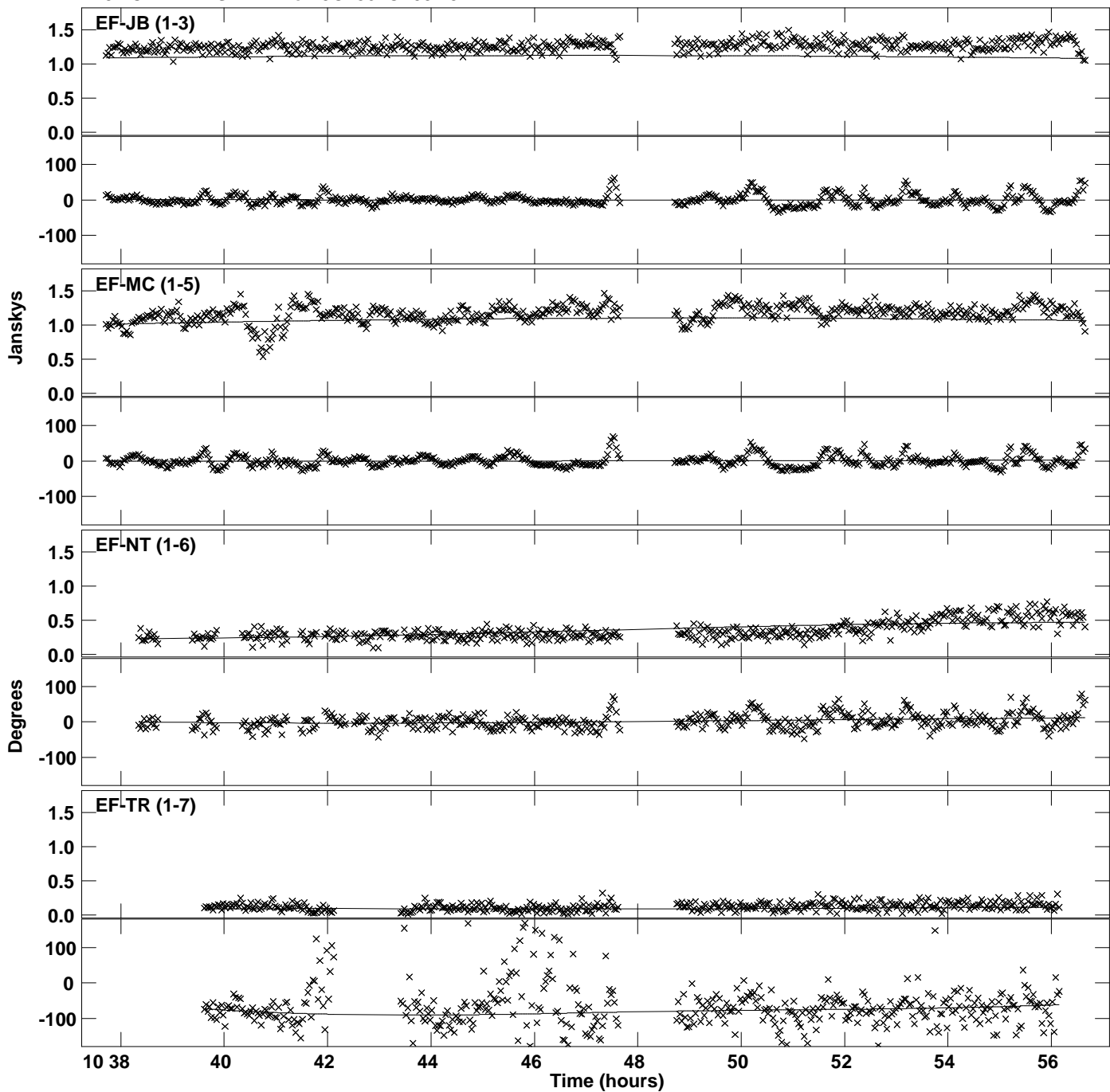
Plot file version 3 created 14-DEC-2015 12:42:54
Amplitude and Phase vs Time for 3C286.MULTI.1 CL # 3
IF 2 CHAN 1 STK LL of 3C286.ICL001.3



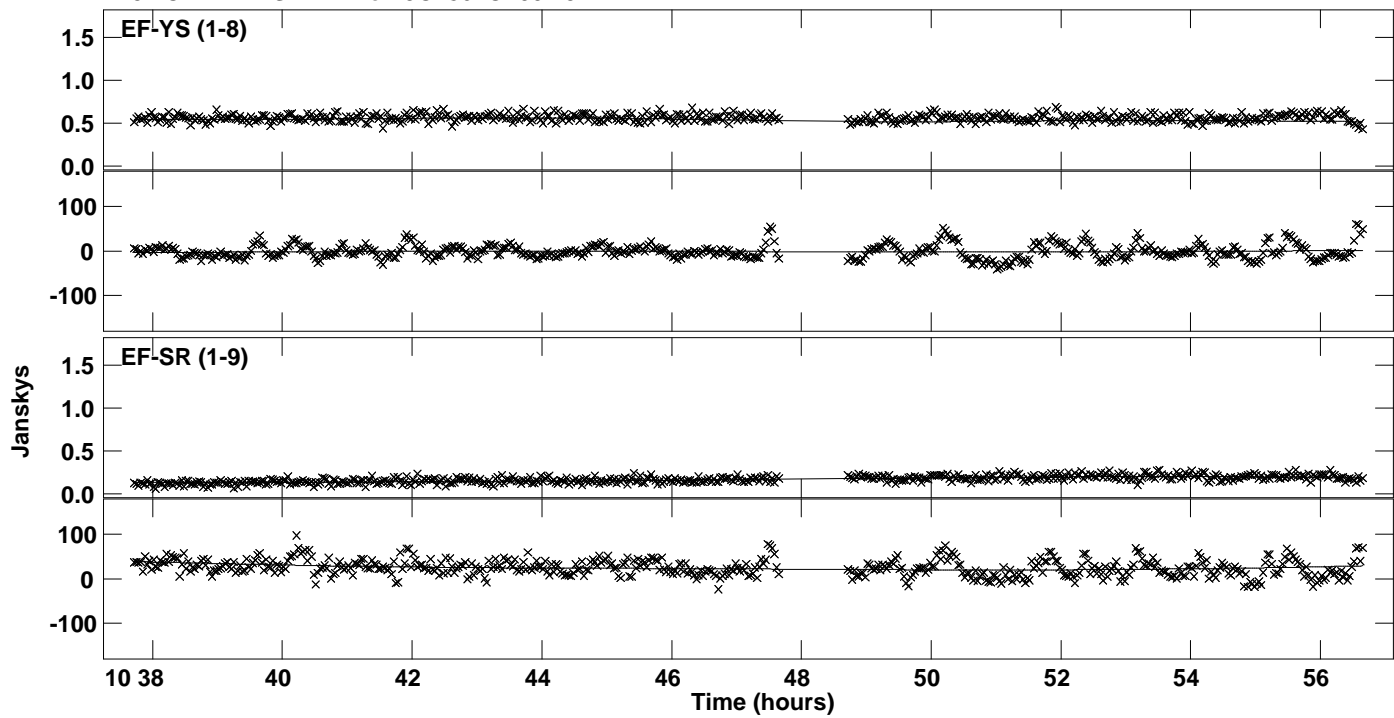
PLot file version 4 created 14-DEC-2015 12:42:54
Amplitude andPhase vs Time for 3C286.MULTI.1 CL # 3
IF 2 CHAN 1 STK LL of 3C286.ICL001.3



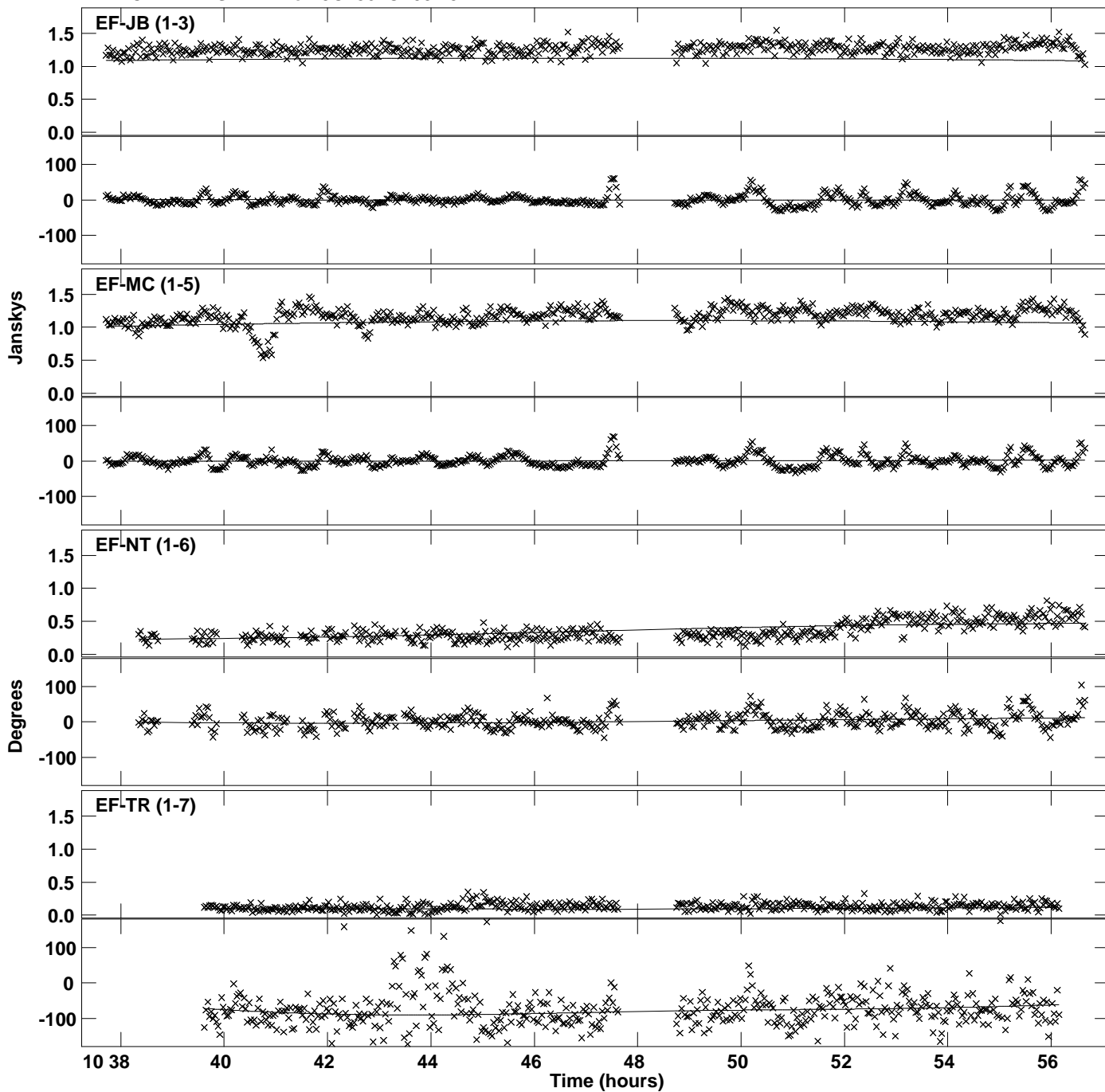
Plot file version 5 created 14-DEC-2015 12:42:55
Amplitude and Phase vs Time for 3C286.MULTI.1 CL # 3
IF 3 CHAN 1 STK LL of 3C286.ICL001.3



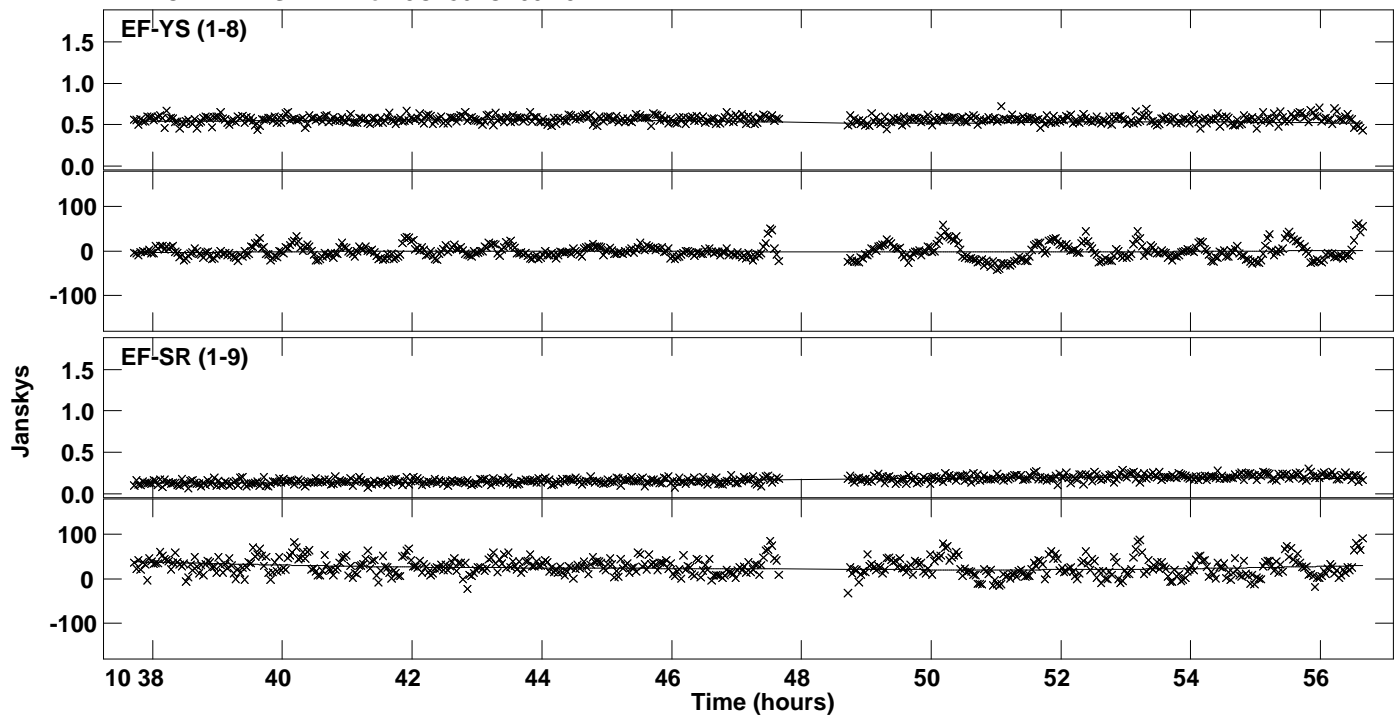
PLot file version 6 created 14-DEC-2015 12:42:55
Amplitude and Phase vs Time for 3C286.MULTI.1 CL # 3
IF 3 CHAN 1 STK LL of 3C286.ICL001.3



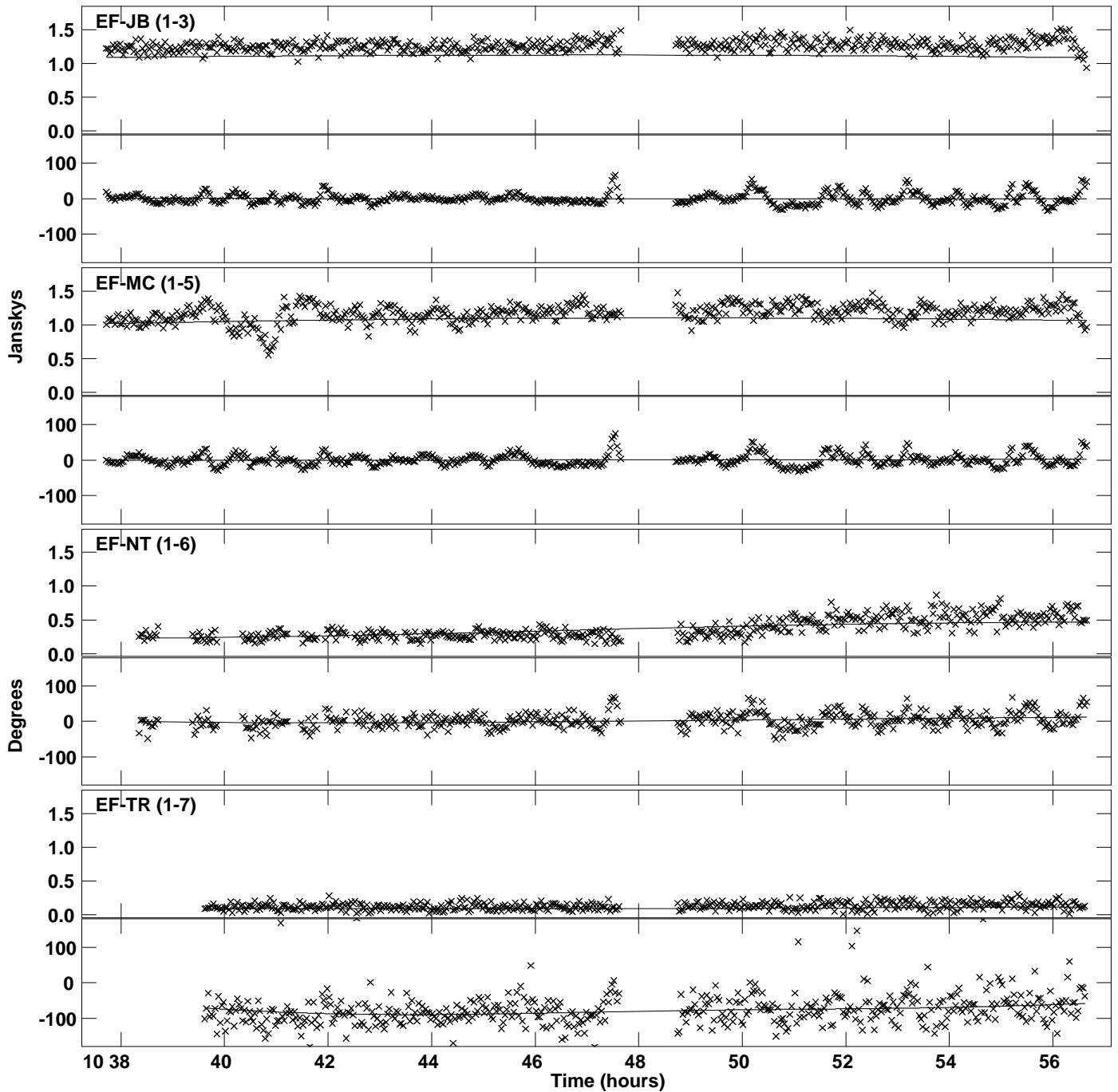
Plot file version 7 created 14-DEC-2015 12:42:56
Amplitude and Phase vs Time for 3C286.MULTI.1 CL # 3
IF 4 CHAN 1 STK LL of 3C286.ICL001.3



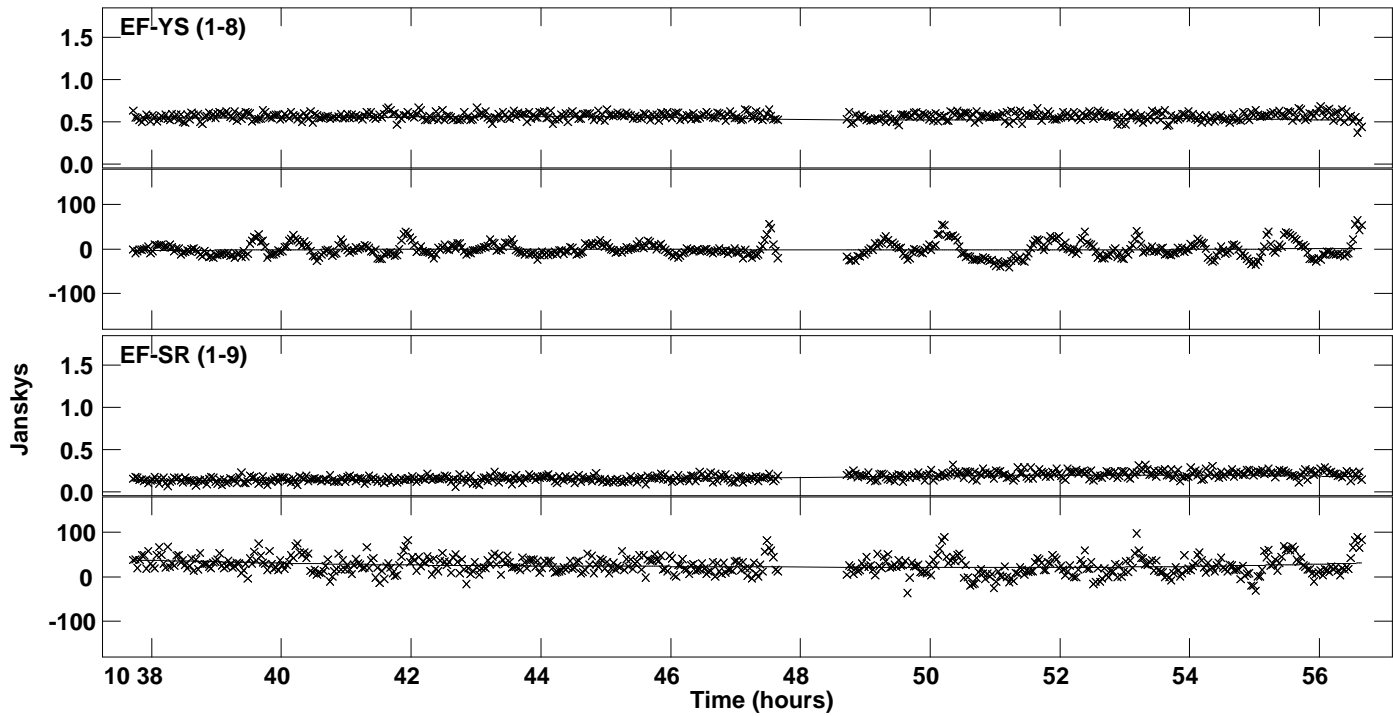
PLot file version 8 created 14-DEC-2015 12:42:57
Amplitude andPhase vs Time for 3C286.MULTI.1 CL # 3
IF 4 CHAN 1 STK LL of 3C286.ICL001.3



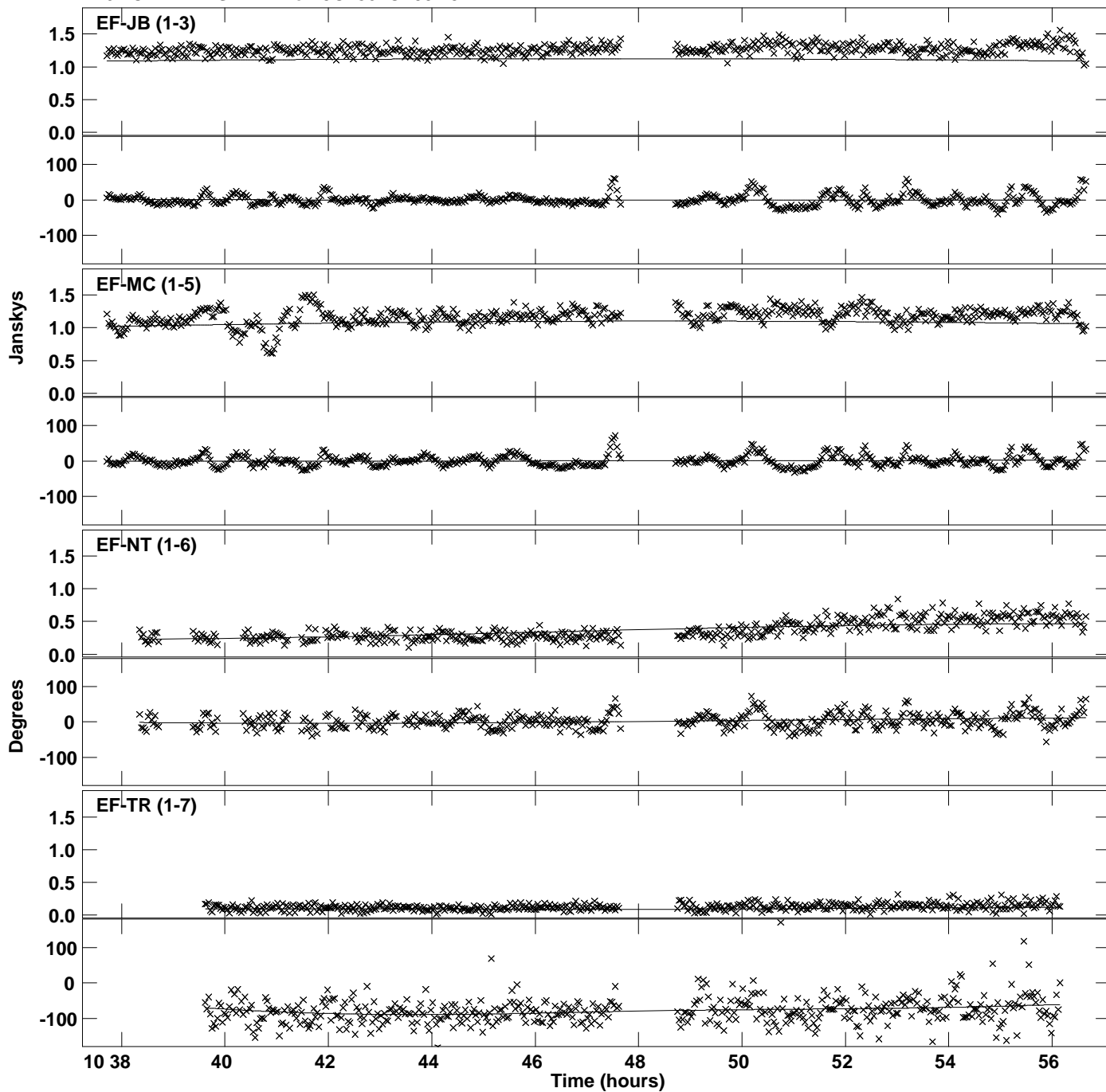
Plot file version 9 created 14-DEC-2015 12:42:58
Amplitude and Phase vs Time for 3C286.MULTI.1 CL # 3
IF 5 CHAN 1 STK LL of 3C286.ICL001.3



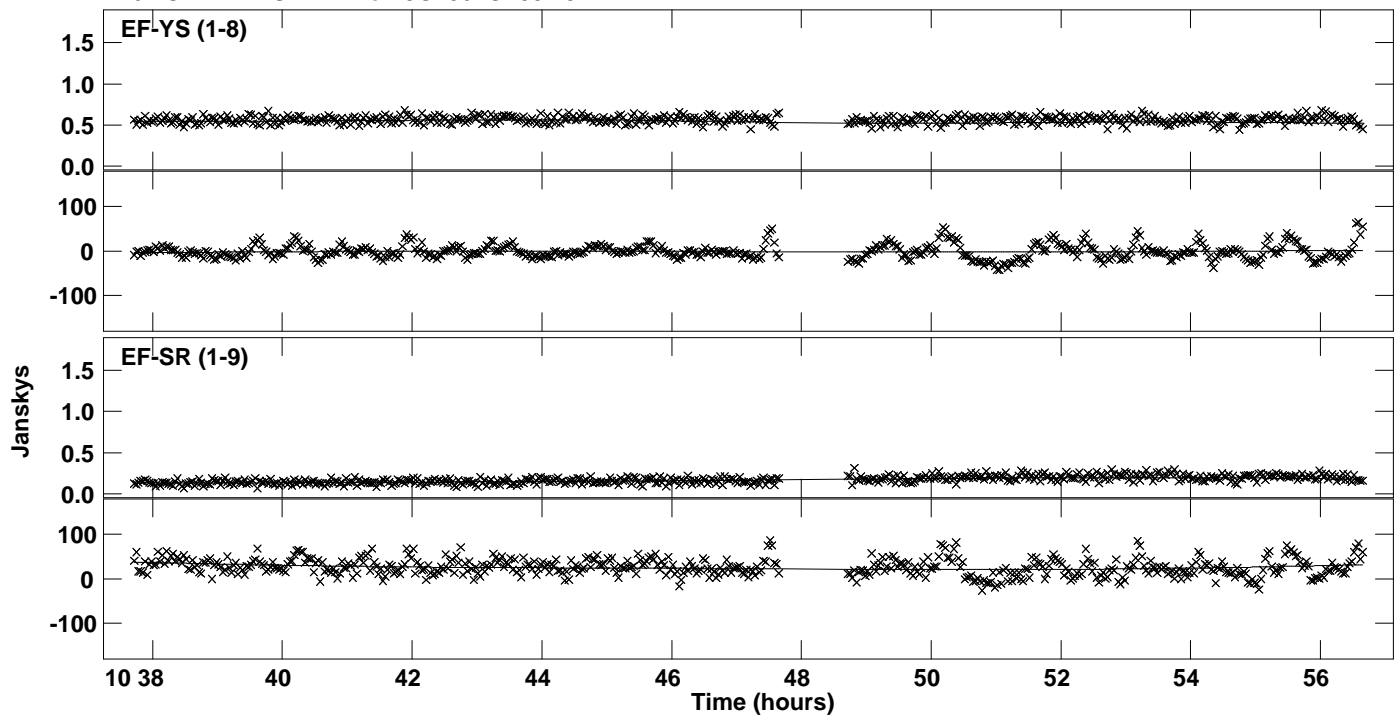
PLot file version 10 created 14-DEC-2015 12:42:58
Amplitude andPhase vs Time for 3C286.MULTI.1 CL # 3
IF 5 CHAN 1 STK LL of 3C286.ICL001.3



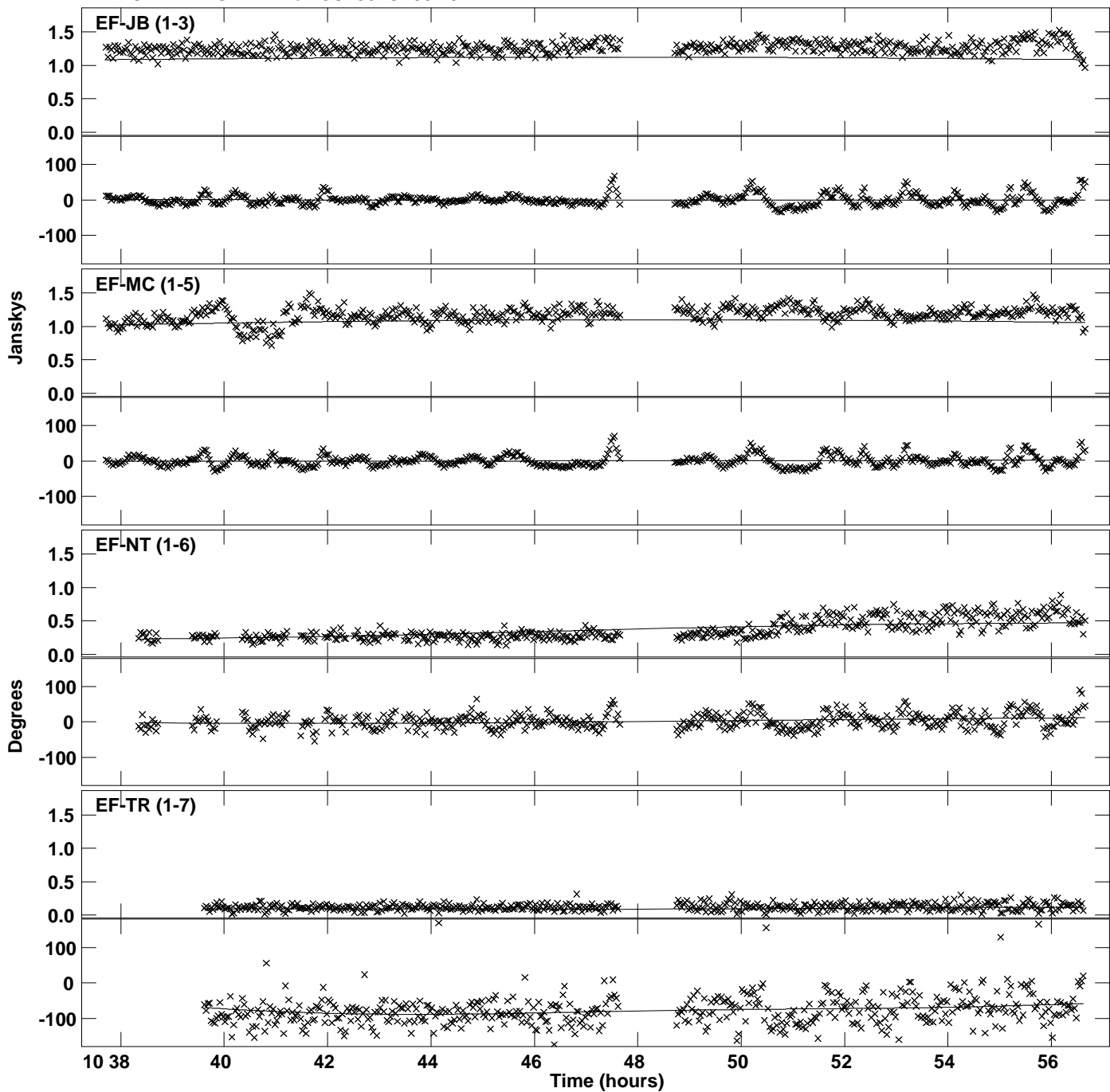
Plot file version 11 created 14-DEC-2015 12:42:59
Amplitude and Phase vs Time for 3C286.MULTI.1 CL # 3
IF 6 CHAN 1 STK LL of 3C286.ICL001.3



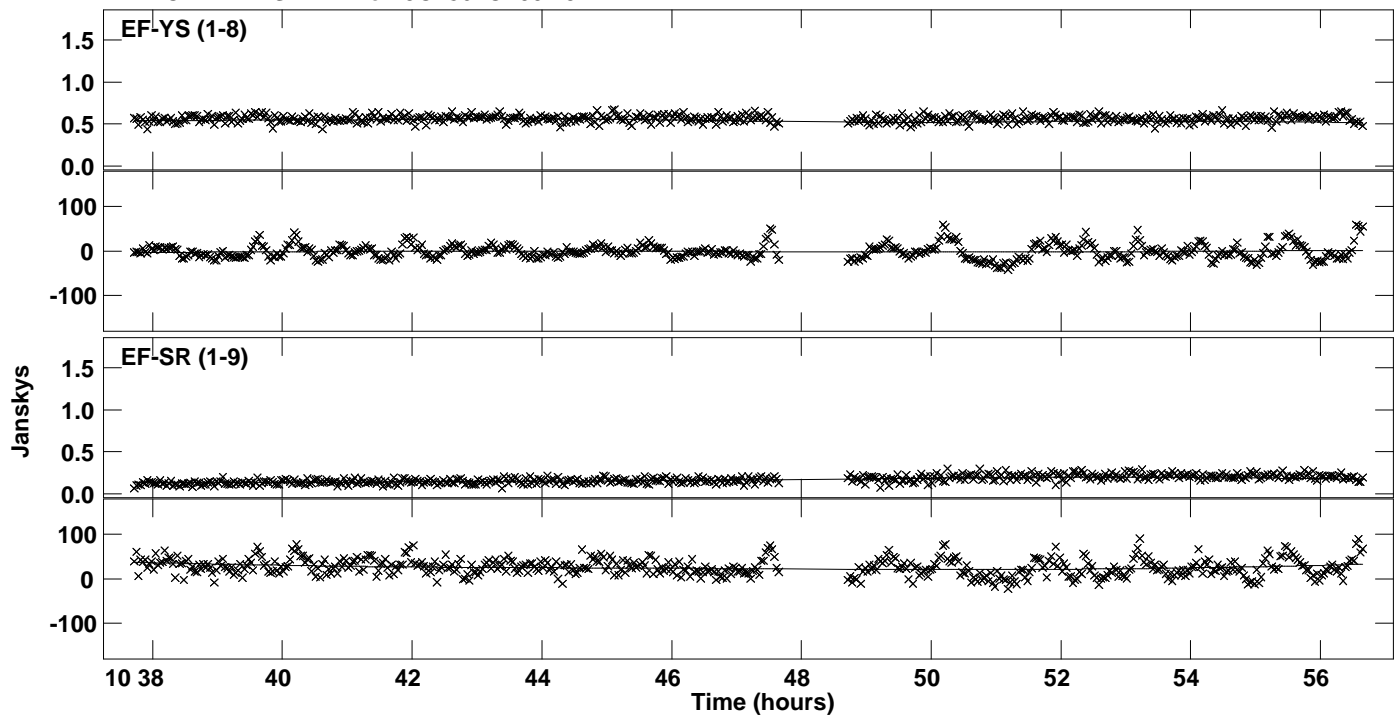
PLot file version 12 created 14-DEC-2015 12:42:59
Amplitude andPhase vs Time for 3C286.MULTI.1 CL # 3
IF 6 CHAN 1 STK LL of 3C286.ICL001.3



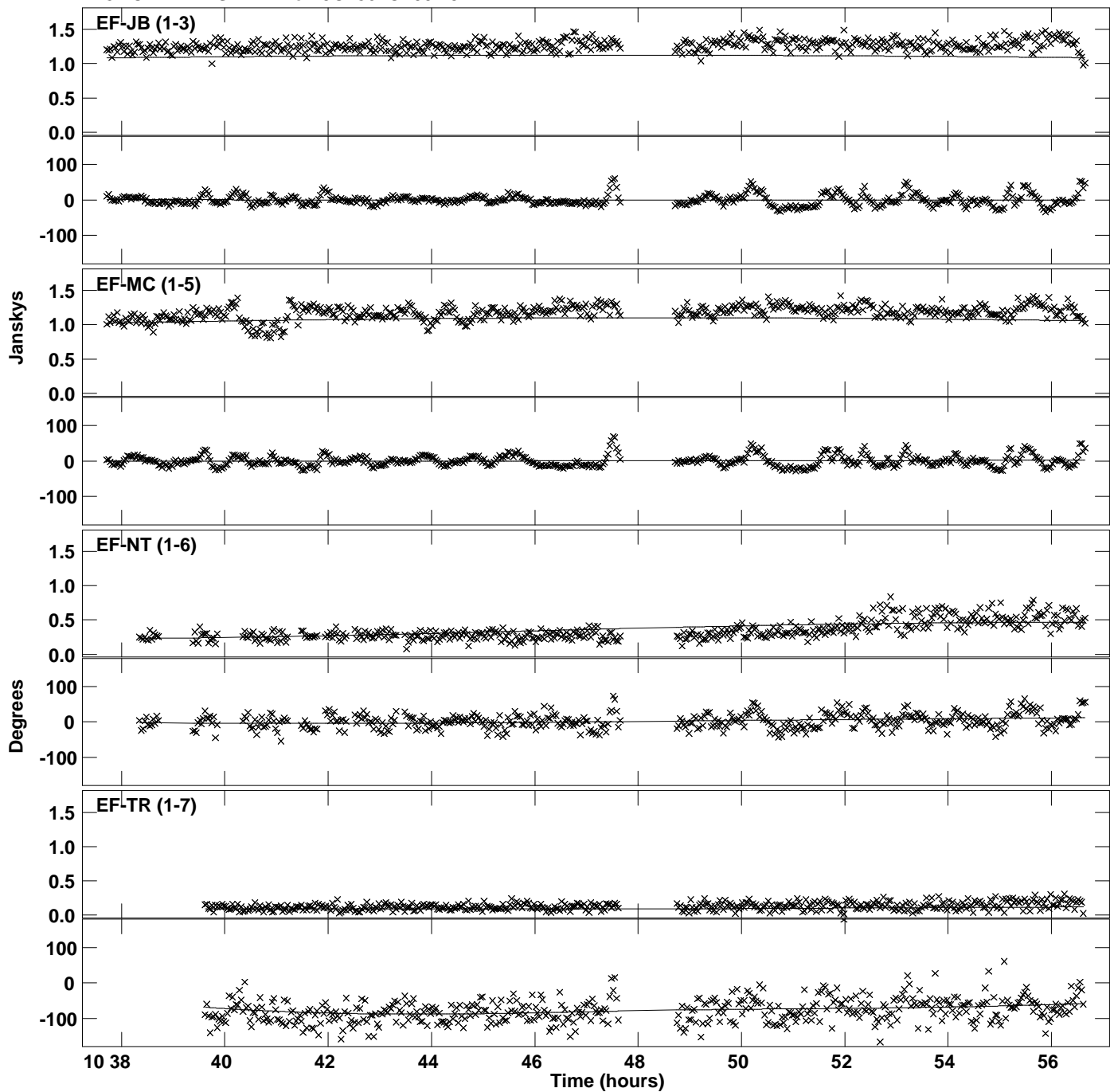
Plot file version 13 created 14-DEC-2015 12:43:00
Amplitude and Phase vs Time for 3C286.MULTI.1 CL # 3
IF 7 CHAN 1 STK LL of 3C286.ICL001.3



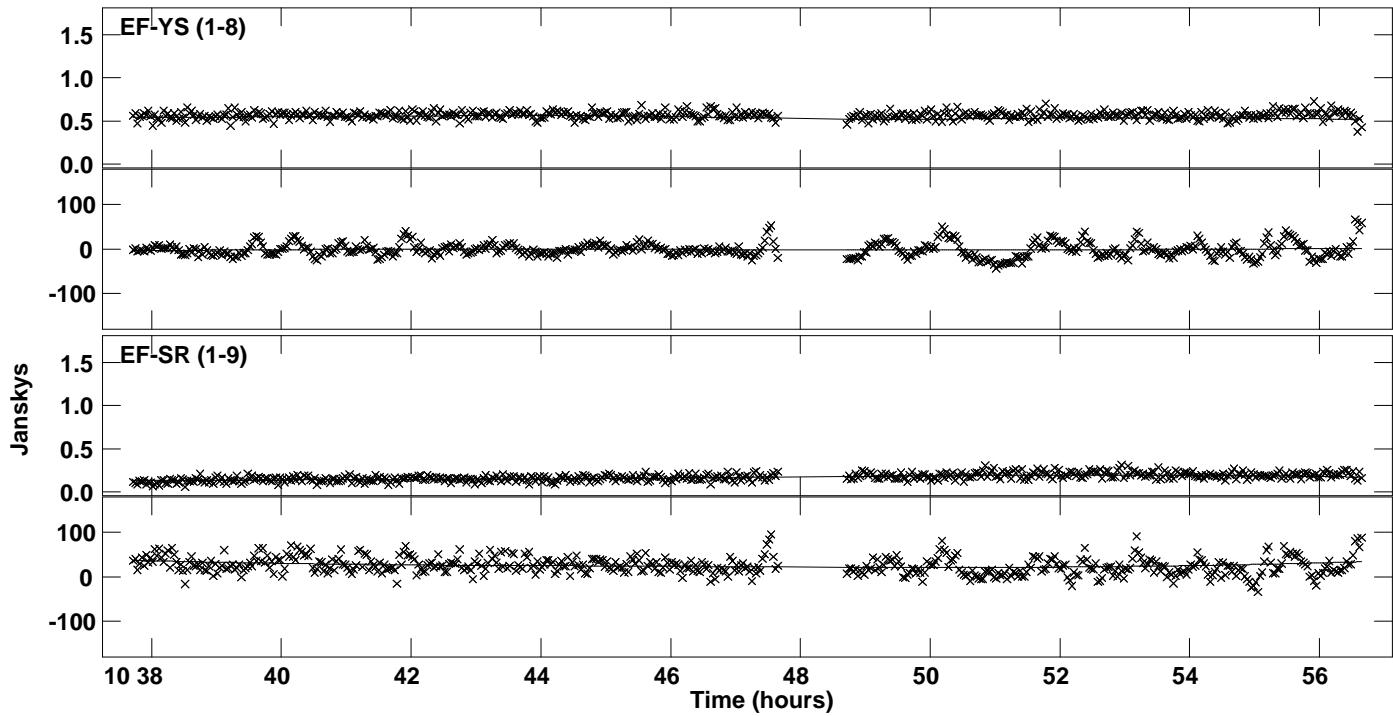
PLot file version 14 created 14-DEC-2015 12:43:00
Amplitude andPhase vs Time for 3C286.MULTI.1 CL # 3
IF 7 CHAN 1 STK LL of 3C286.ICL001.3



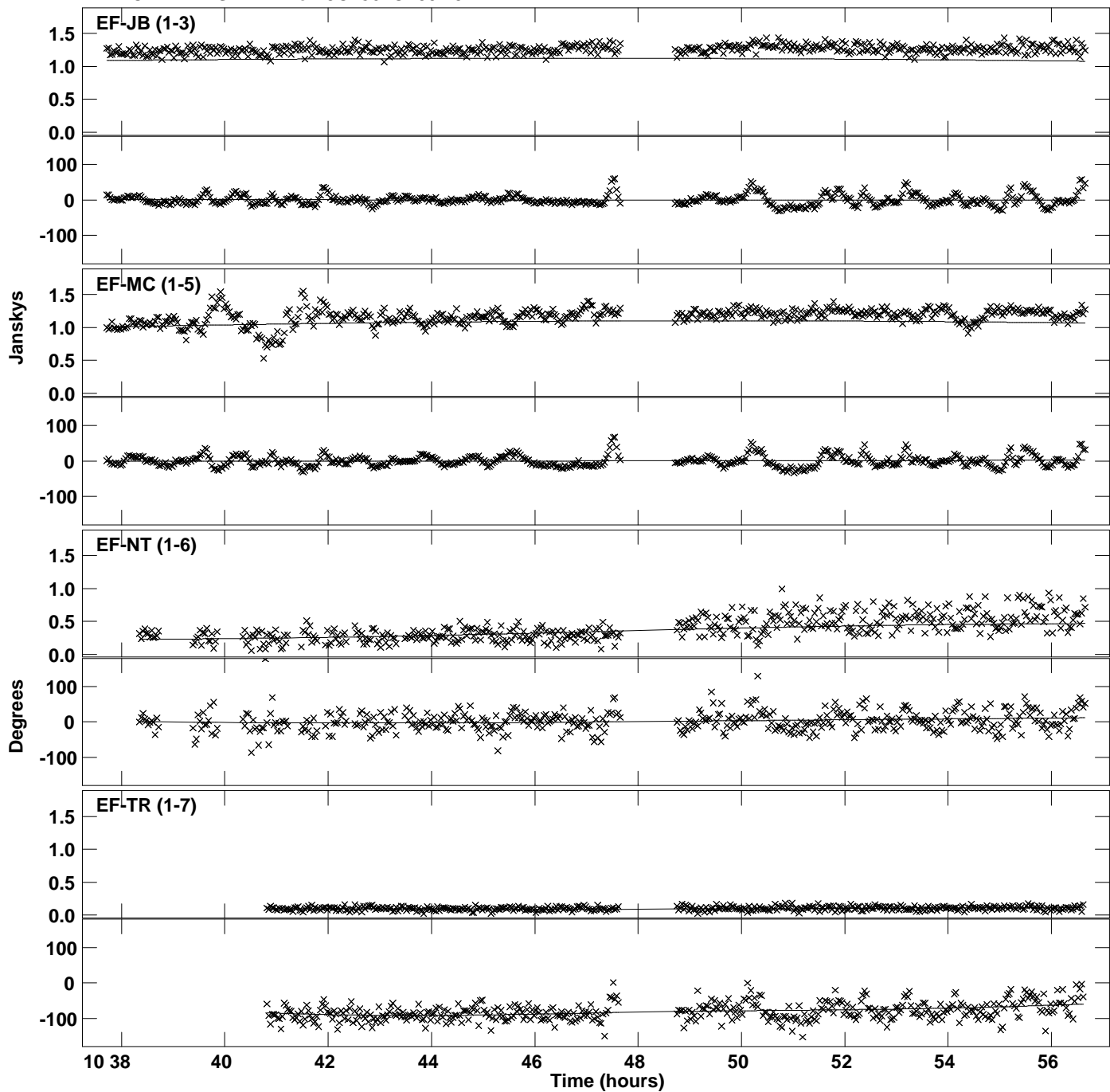
Plot file version 15 created 14-DEC-2015 12:43:02
Amplitude and Phase vs Time for 3C286.MULTI.1 CL # 3
IF 8 CHAN 1 STK LL of 3C286.ICL001.3



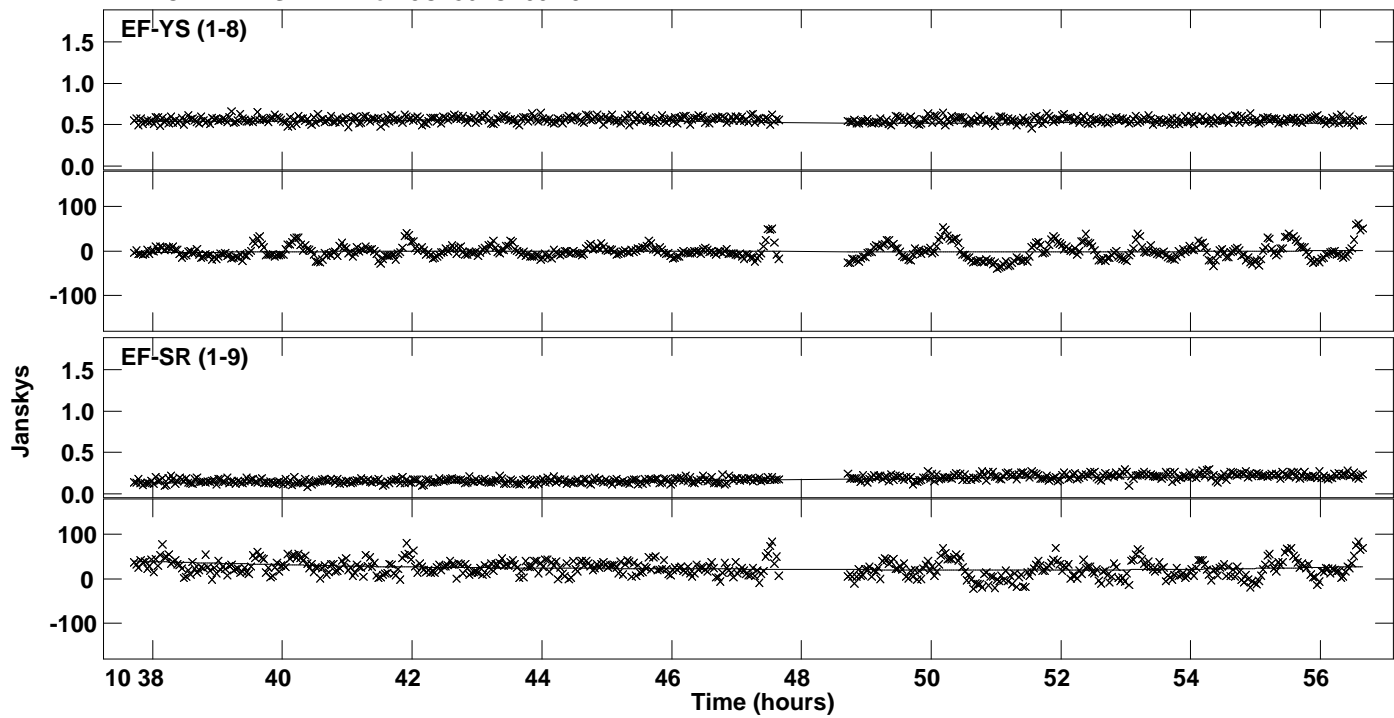
PLot file version 16 created 14-DEC-2015 12:43:02
Amplitude andPhase vs Time for 3C286.MULTI.1 CL # 3
IF 8 CHAN 1 STK LL of 3C286.ICL001.3



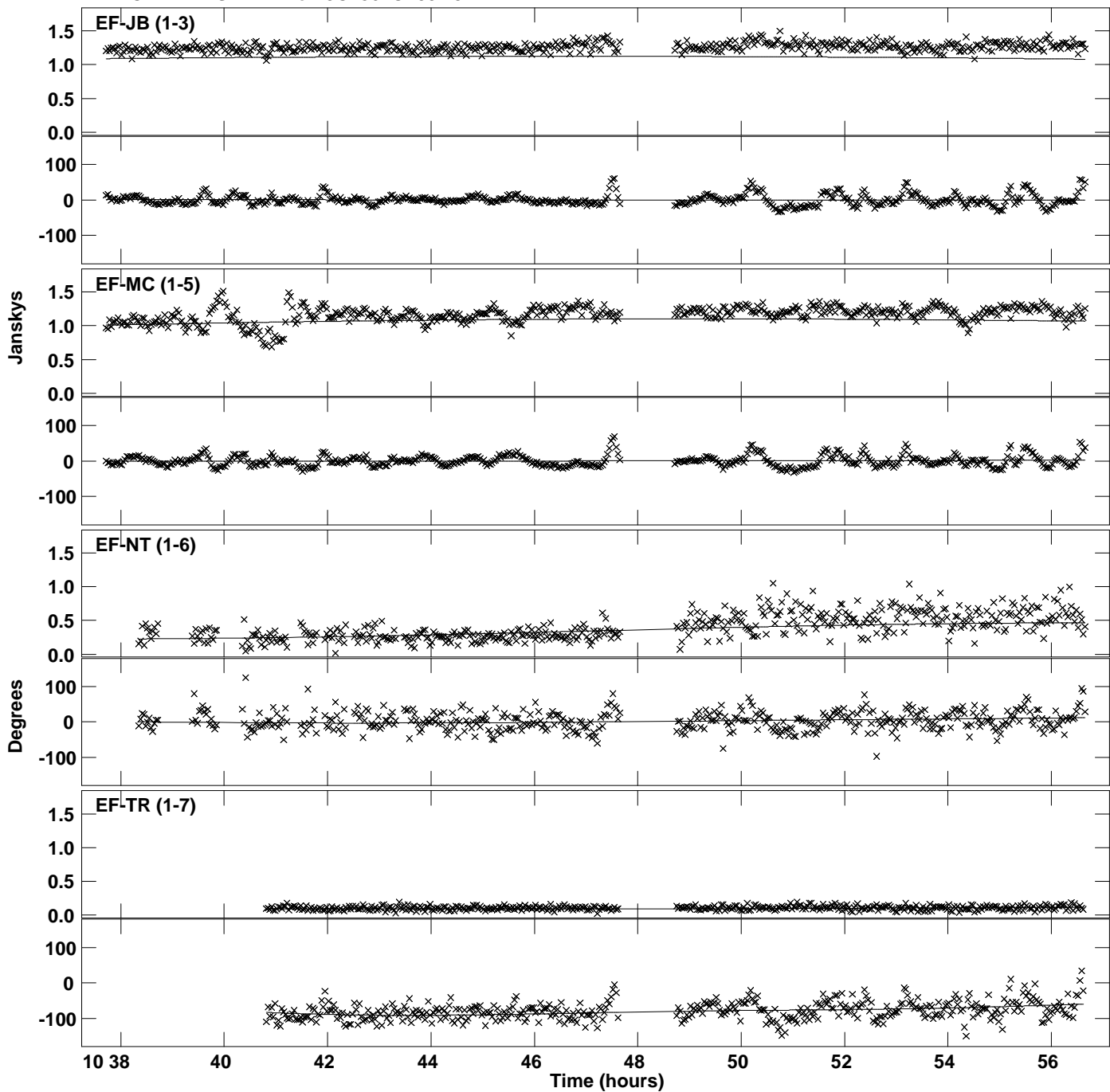
Plot file version 17 created 14-DEC-2015 12:43:03
Amplitude andPhase vs Time for 3C286.MULTI.1 CL # 3
IF 1 CHAN 1 STK RR of 3C286.ICL001.3



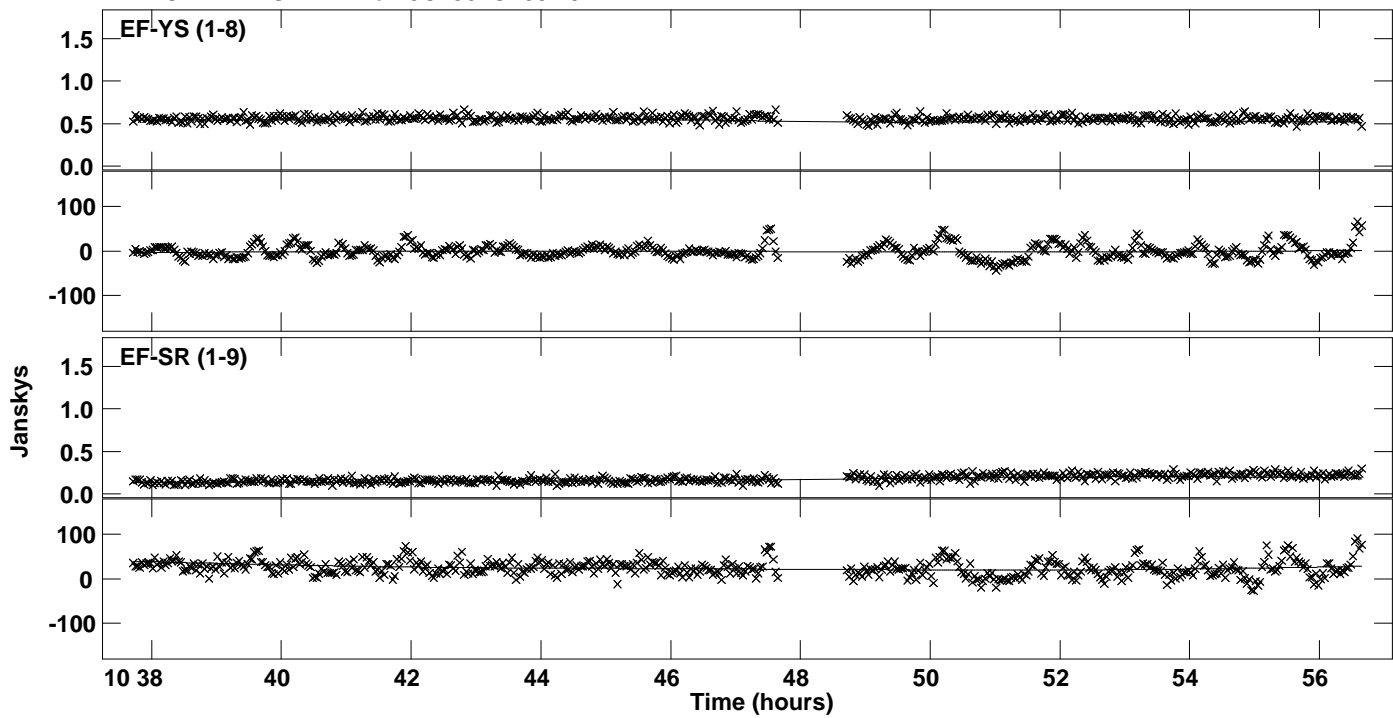
Plot file version 18 created 14-DEC-2015 12:43:03
Amplitude and Phase vs Time for 3C286.MULTI.1 CL # 3
IF 1 CHAN 1 STK RR of 3C286.ICL001.3



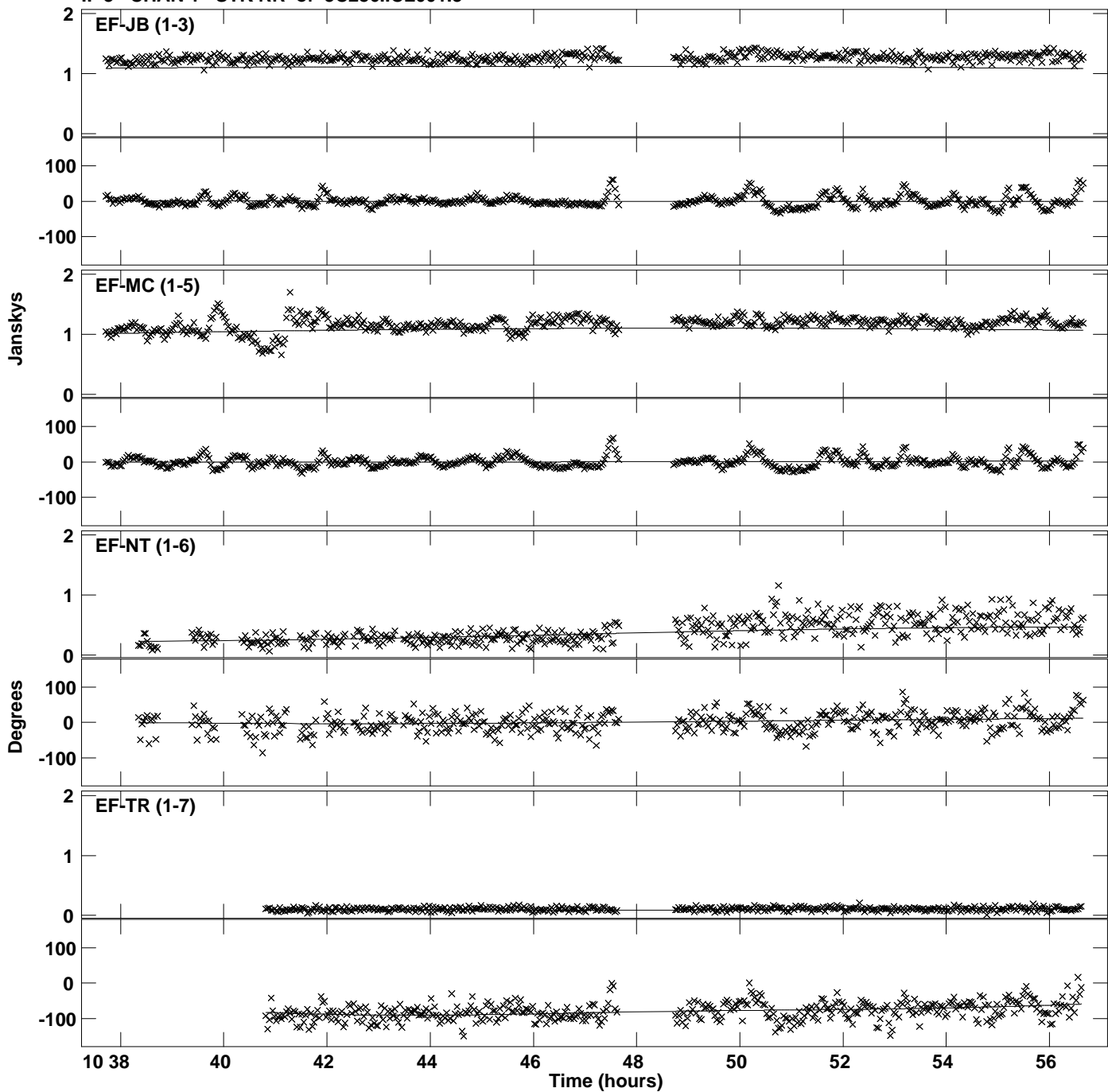
Plot file version 19 created 14-DEC-2015 12:43:04
Amplitude andPhase vs Time for 3C286.MULTI.1 CL # 3
IF 2 CHAN 1 STK RR of 3C286.ICL001.3



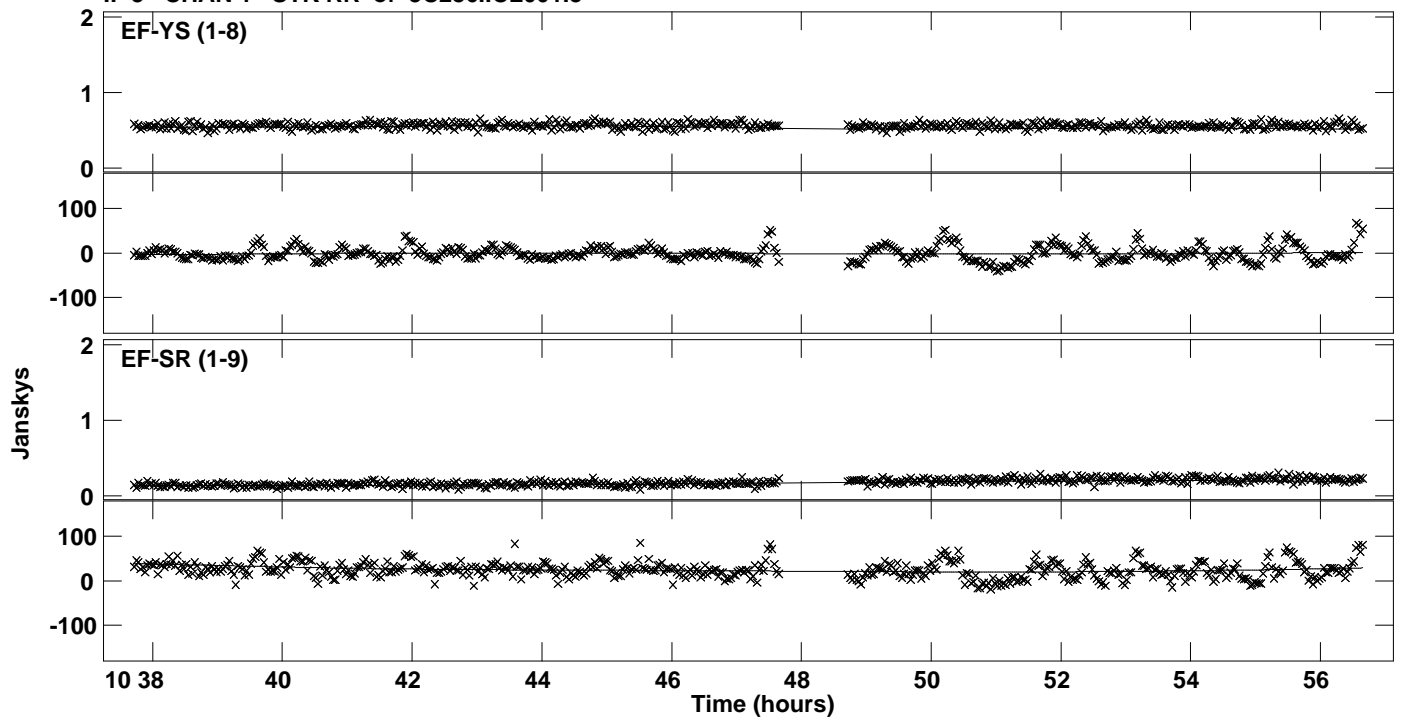
PLot file version 20 created 14-DEC-2015 12:43:04
Amplitude andPhase vs Time for 3C286.MULTI.1 CL # 3
IF 2 CHAN 1 STK RR of 3C286.ICL001.3



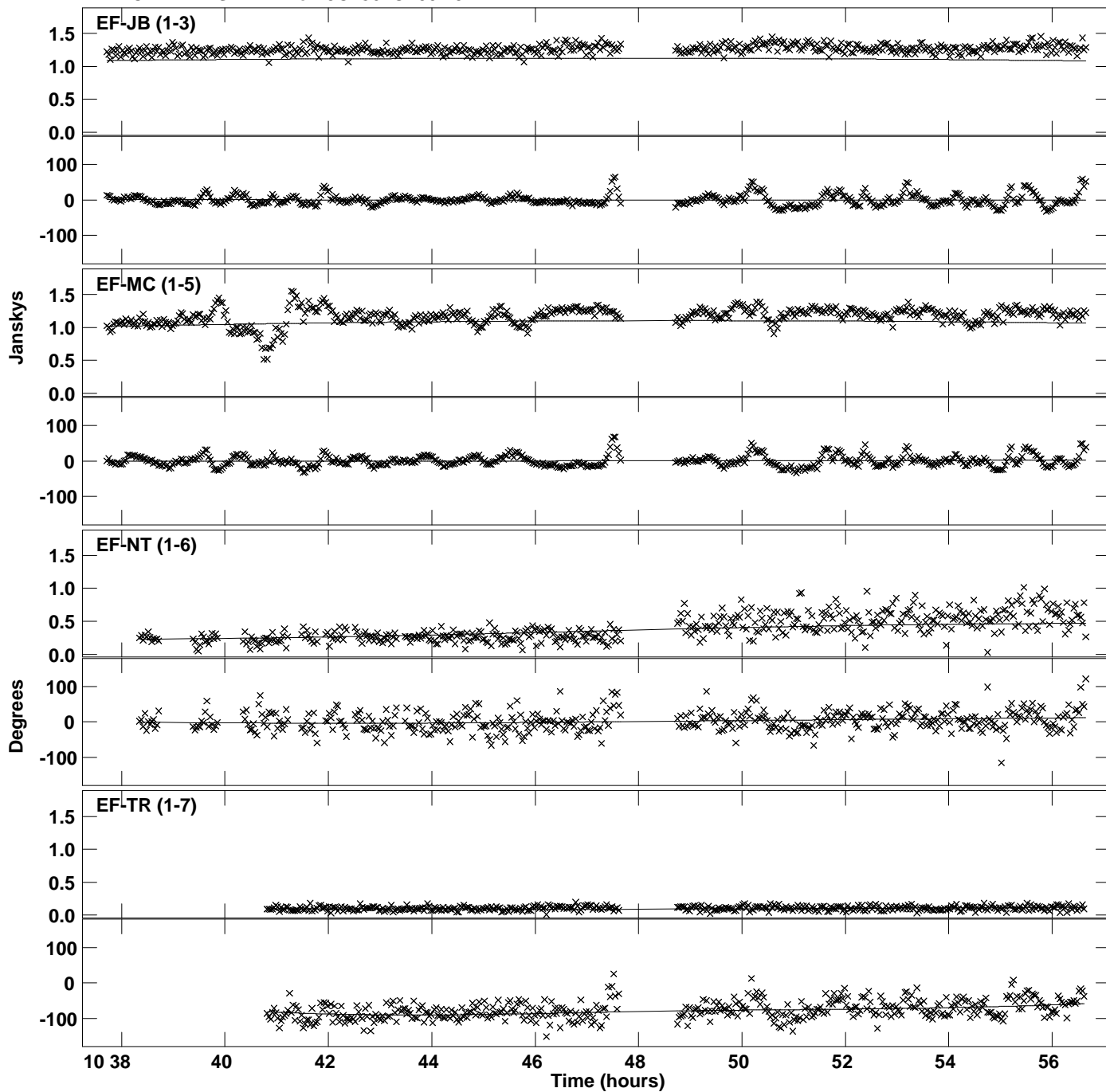
Plot file version 21 created 14-DEC-2015 12:43:06
Amplitude and Phase vs Time for 3C286.MULTI.1 CL # 3
IF 3 CHAN 1 STK RR of 3C286.ICL001.3



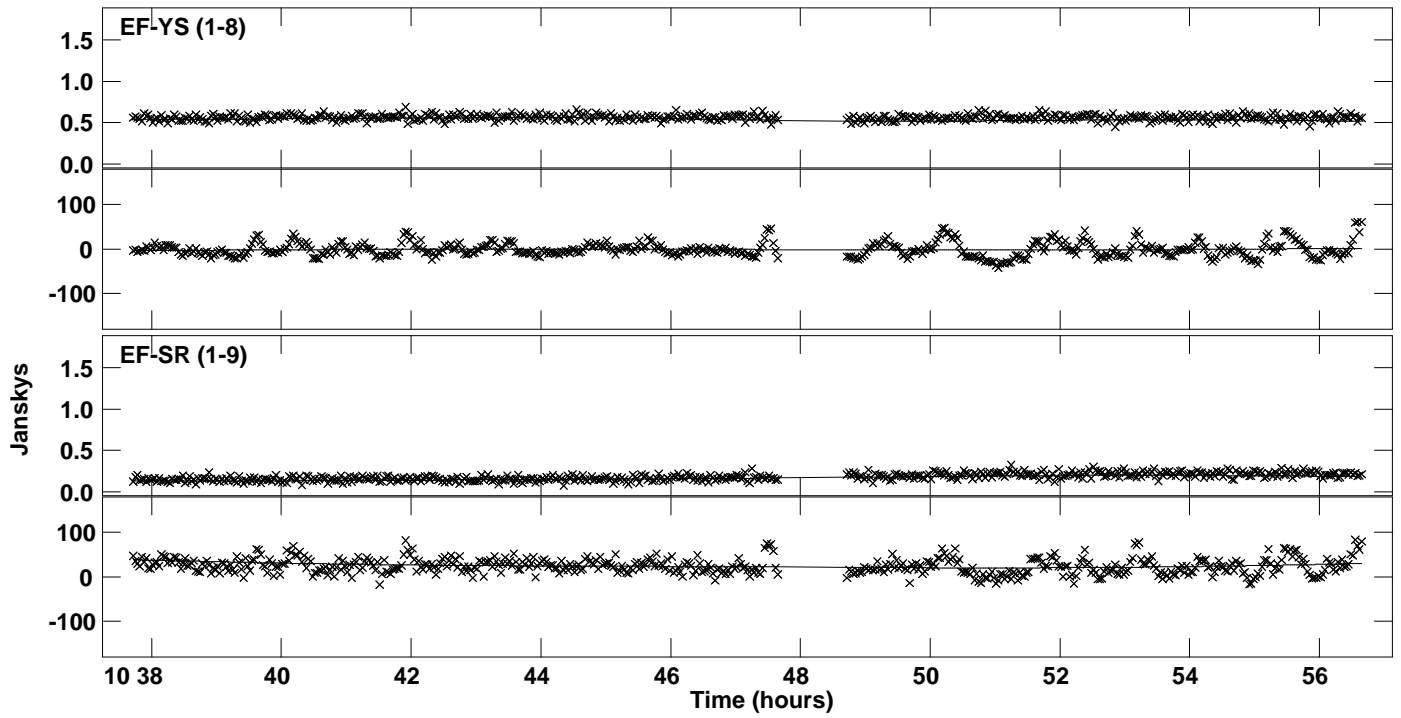
PLot file version 22 created 14-DEC-2015 12:43:06
Amplitude andPhase vs Time for 3C286.MULTI.1 CL # 3
IF 3 CHAN 1 STK RR of 3C286.ICL001.3



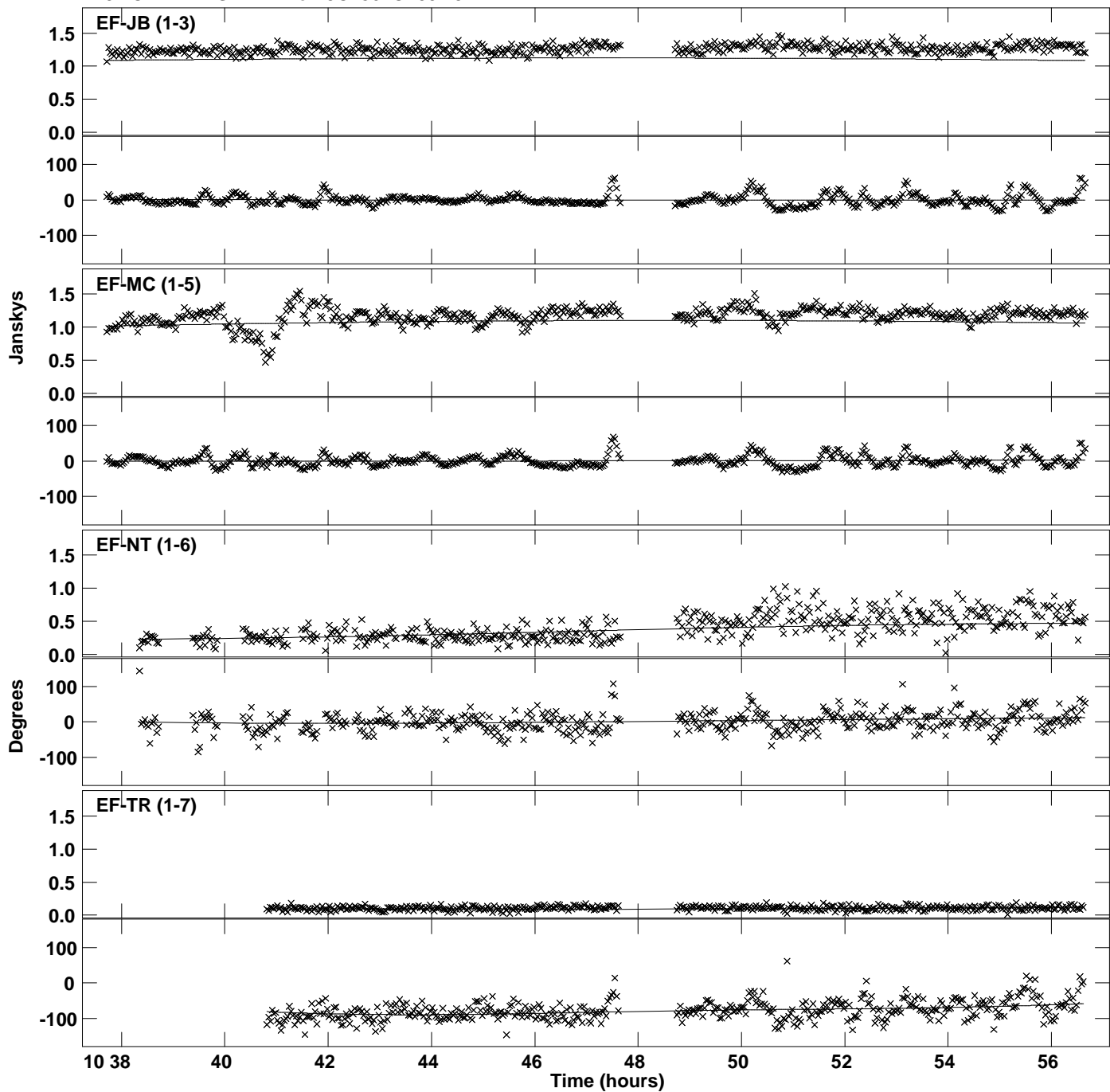
Plot file version 23 created 14-DEC-2015 12:43:07
Amplitude andPhase vs Time for 3C286.MULTI.1 CL # 3
IF 4 CHAN 1 STK RR of 3C286.ICL001.3



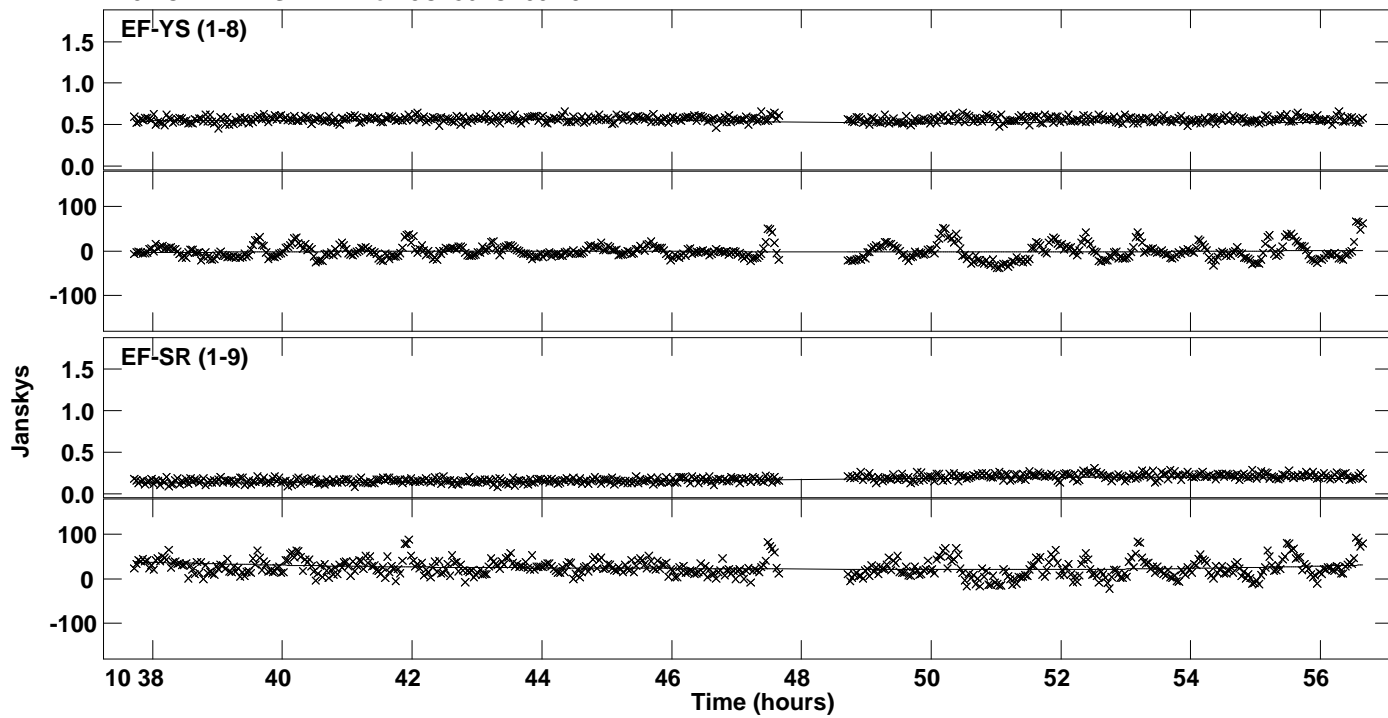
PLot file version 24 created 14-DEC-2015 12:43:07
Amplitude and Phase vs Time for 3C286.MULTI.1 CL # 3
IF 4 CHAN 1 STK RR of 3C286.ICL001.3



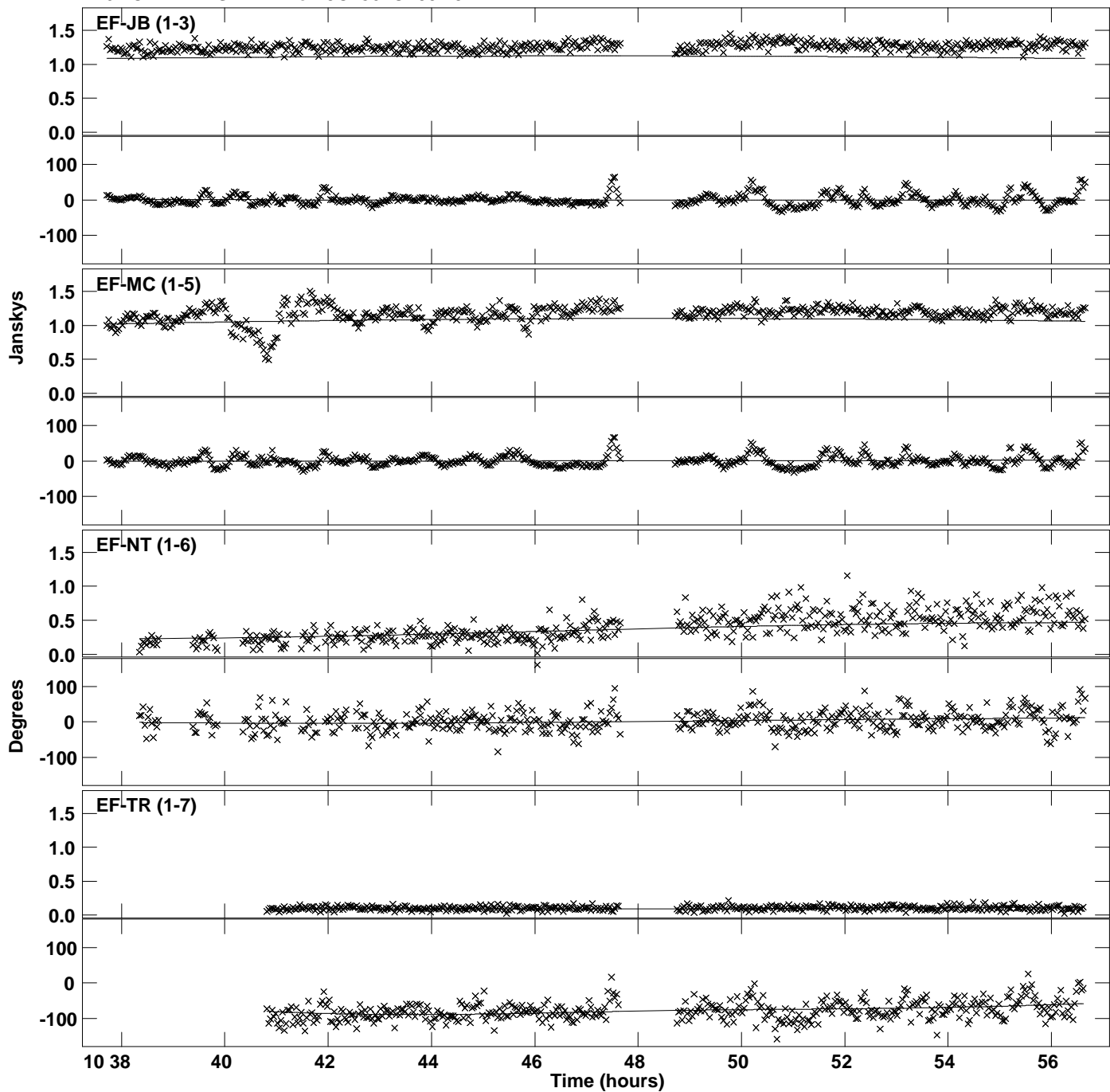
Plot file version 25 created 14-DEC-2015 12:43:08
Amplitude andPhase vs Time for 3C286.MULTI.1 CL # 3
IF 5 CHAN 1 STK RR of 3C286.ICL001.3



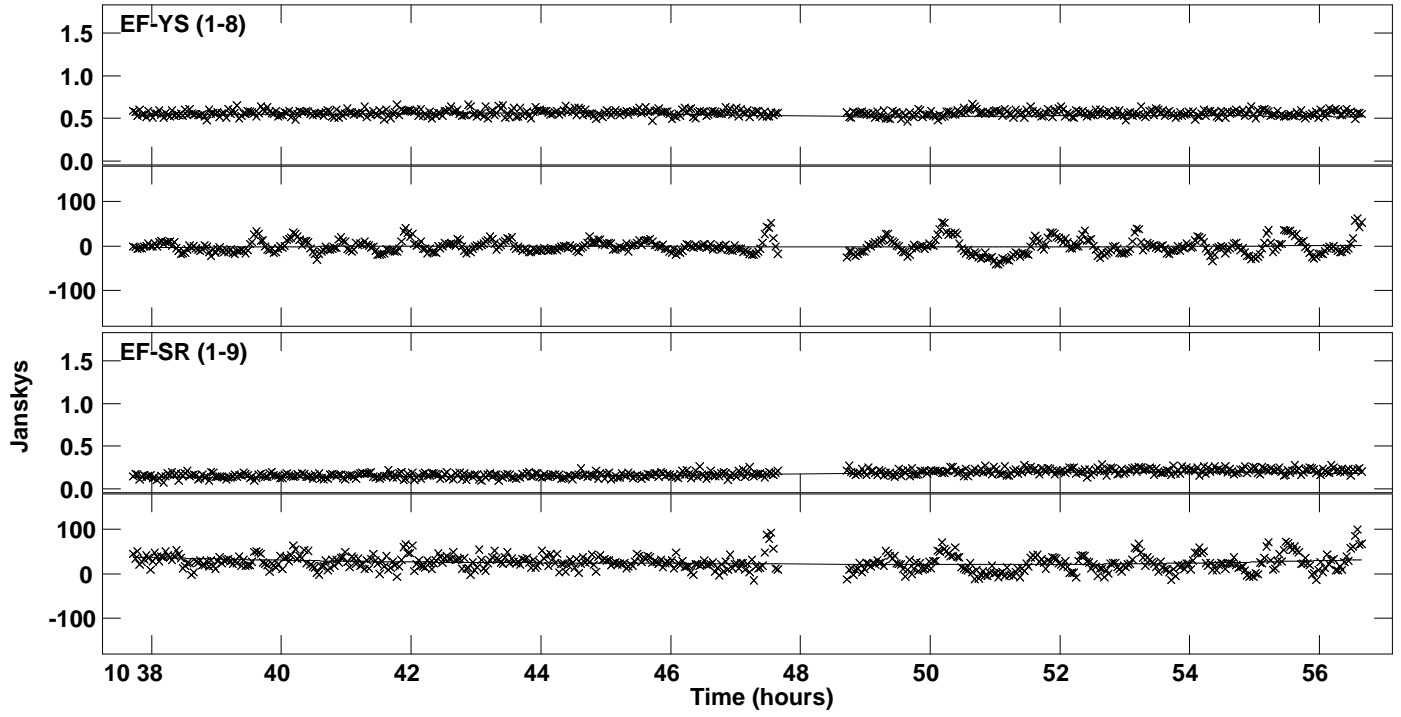
PLot file version 26 created 14-DEC-2015 12:43:08
Amplitude andPhase vs Time for 3C286.MULTI.1 CL # 3
IF 5 CHAN 1 STK RR of 3C286.ICL001.3



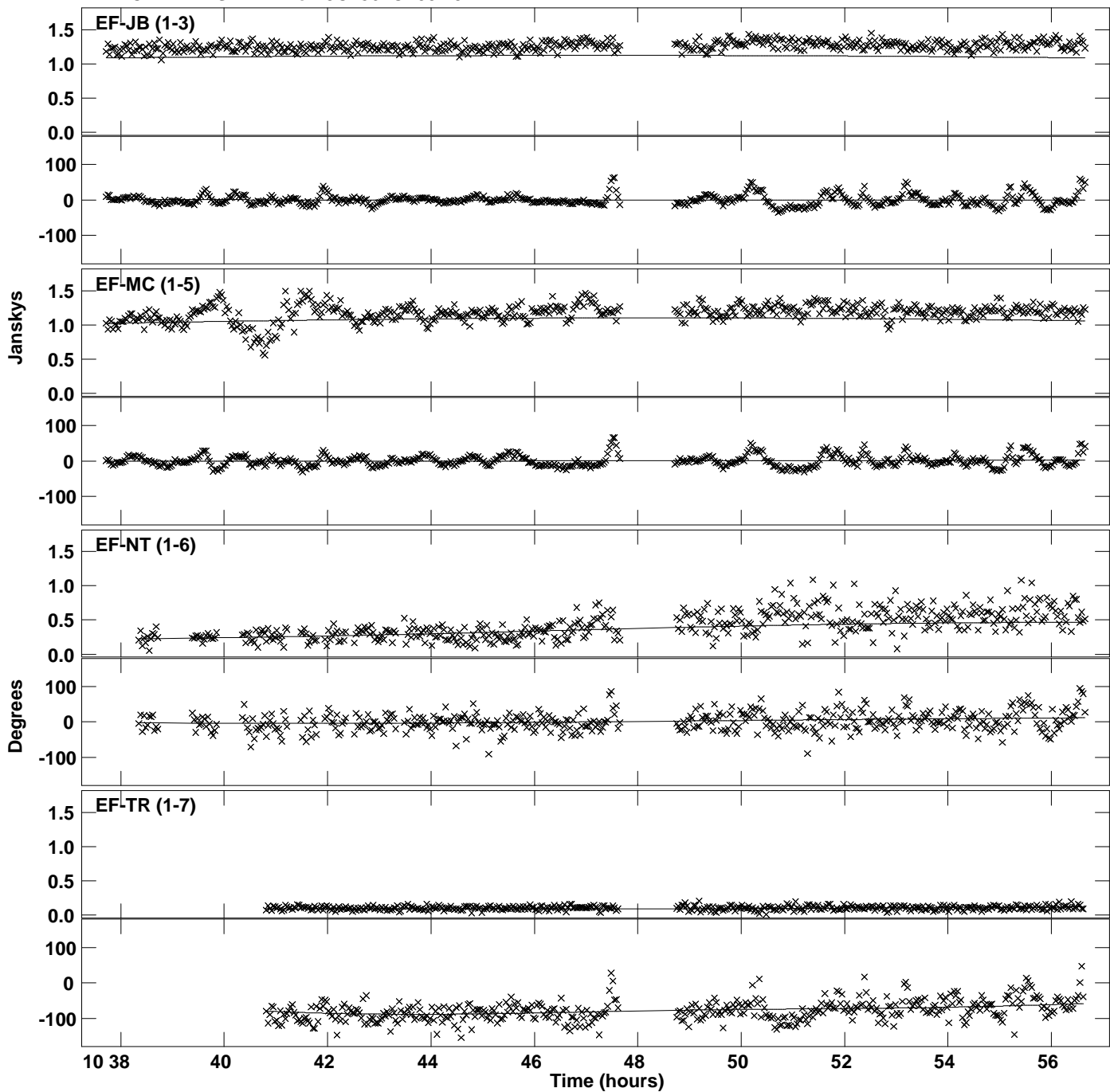
Plot file version 27 created 14-DEC-2015 12:43:10
Amplitude and Phase vs Time for 3C286.MULTI.1 CL # 3
IF 6 CHAN 1 STK RR of 3C286.ICL001.3



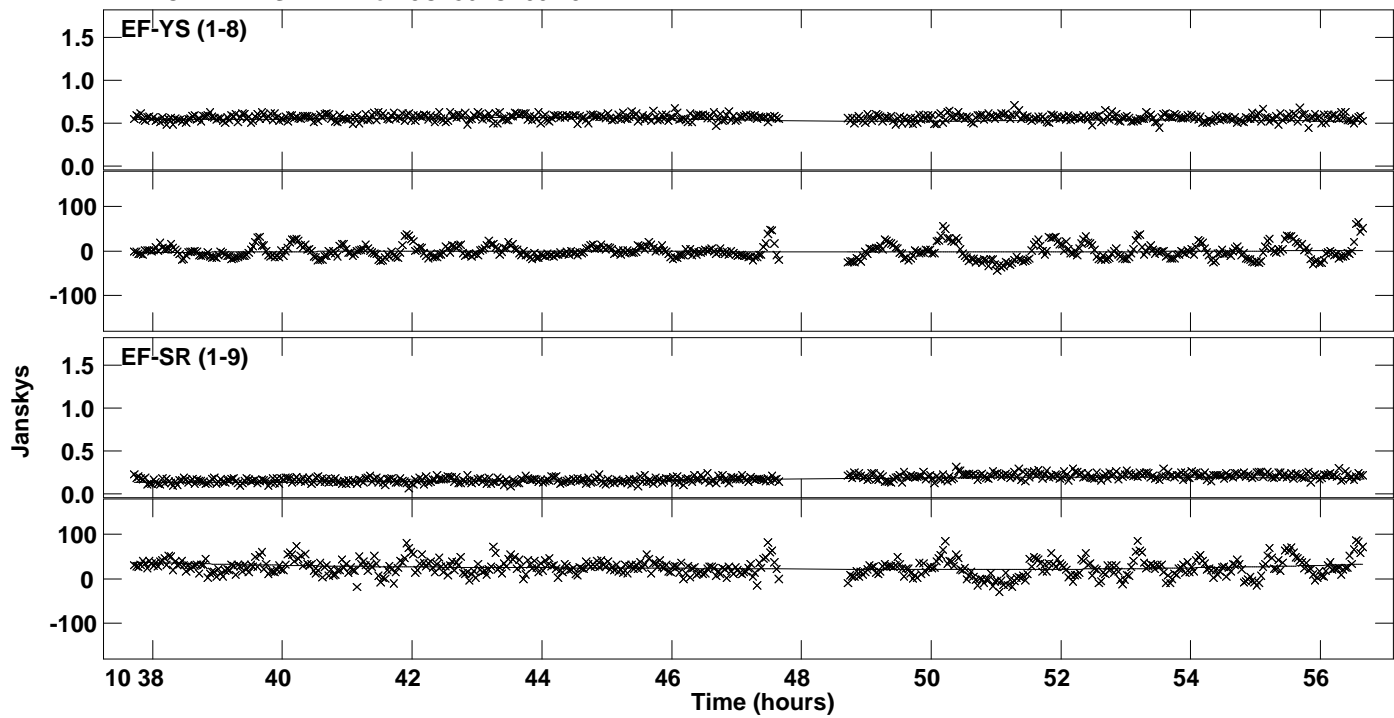
PLot file version 28 created 14-DEC-2015 12:43:10
Amplitude andPhase vs Time for 3C286.MULTI.1 CL # 3
IF 6 CHAN 1 STK RR of 3C286.ICL001.3



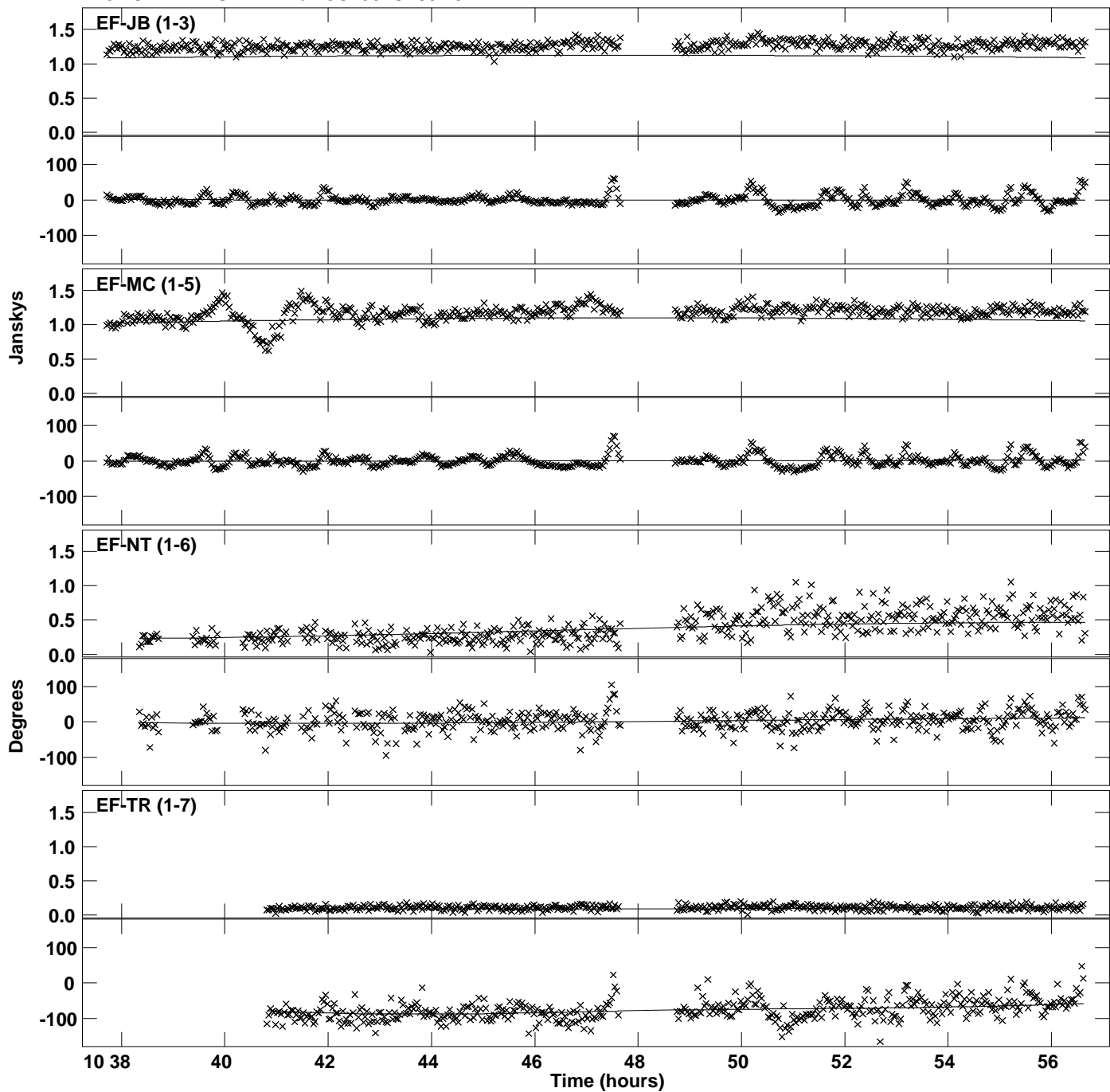
Plot file version 29 created 14-DEC-2015 12:43:11
Amplitude and Phase vs Time for 3C286.MULTI.1 CL # 3
IF 7 CHAN 1 STK RR of 3C286.ICL001.3



PLot file version 30 created 14-DEC-2015 12:43:11
Amplitude andPhase vs Time for 3C286.MULTI.1 CL # 3
IF 7 CHAN 1 STK RR of 3C286.ICL001.3



Plot file version 31 created 14-DEC-2015 12:43:13
Amplitude and Phase vs Time for 3C286.MULTI.1 CL # 3
IF 8 CHAN 1 STK RR of 3C286.ICL001.3



Plot file version 32 created 14-DEC-2015 12:43:13
Amplitude and Phase vs Time for 3C286.MULTI.1 CL # 3
IF 8 CHAN 1 STK RR of 3C286.ICL001.3

