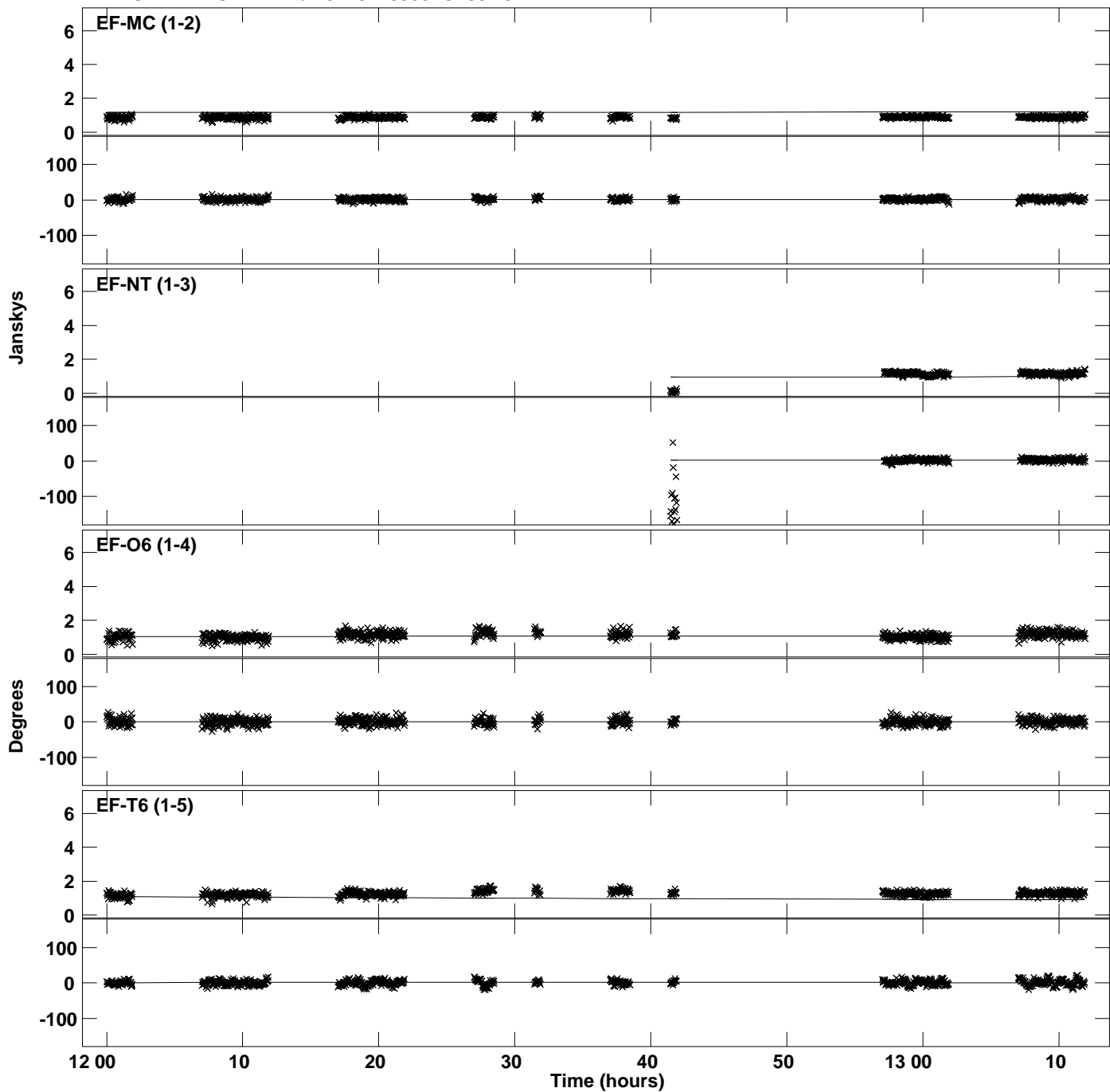
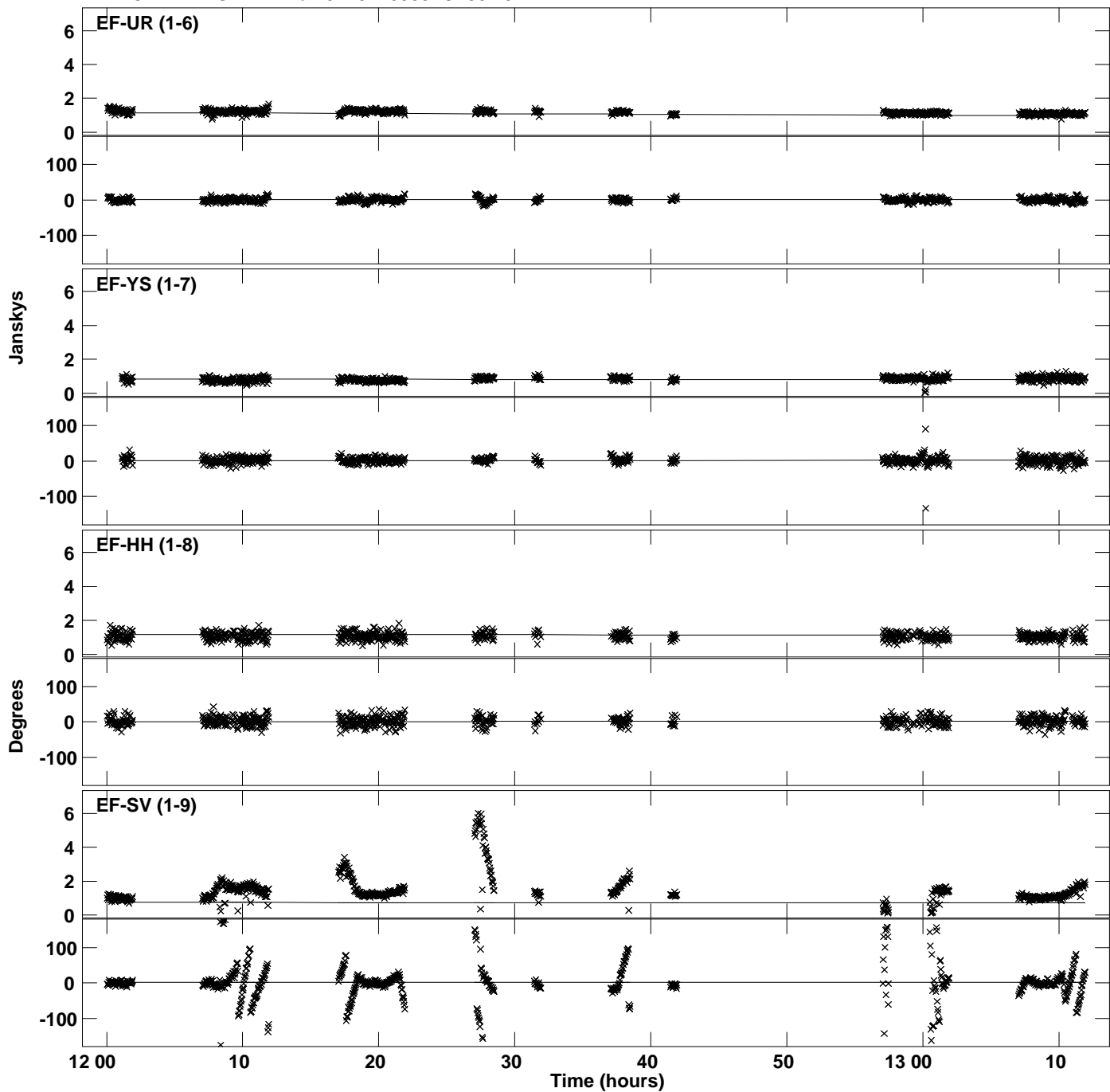


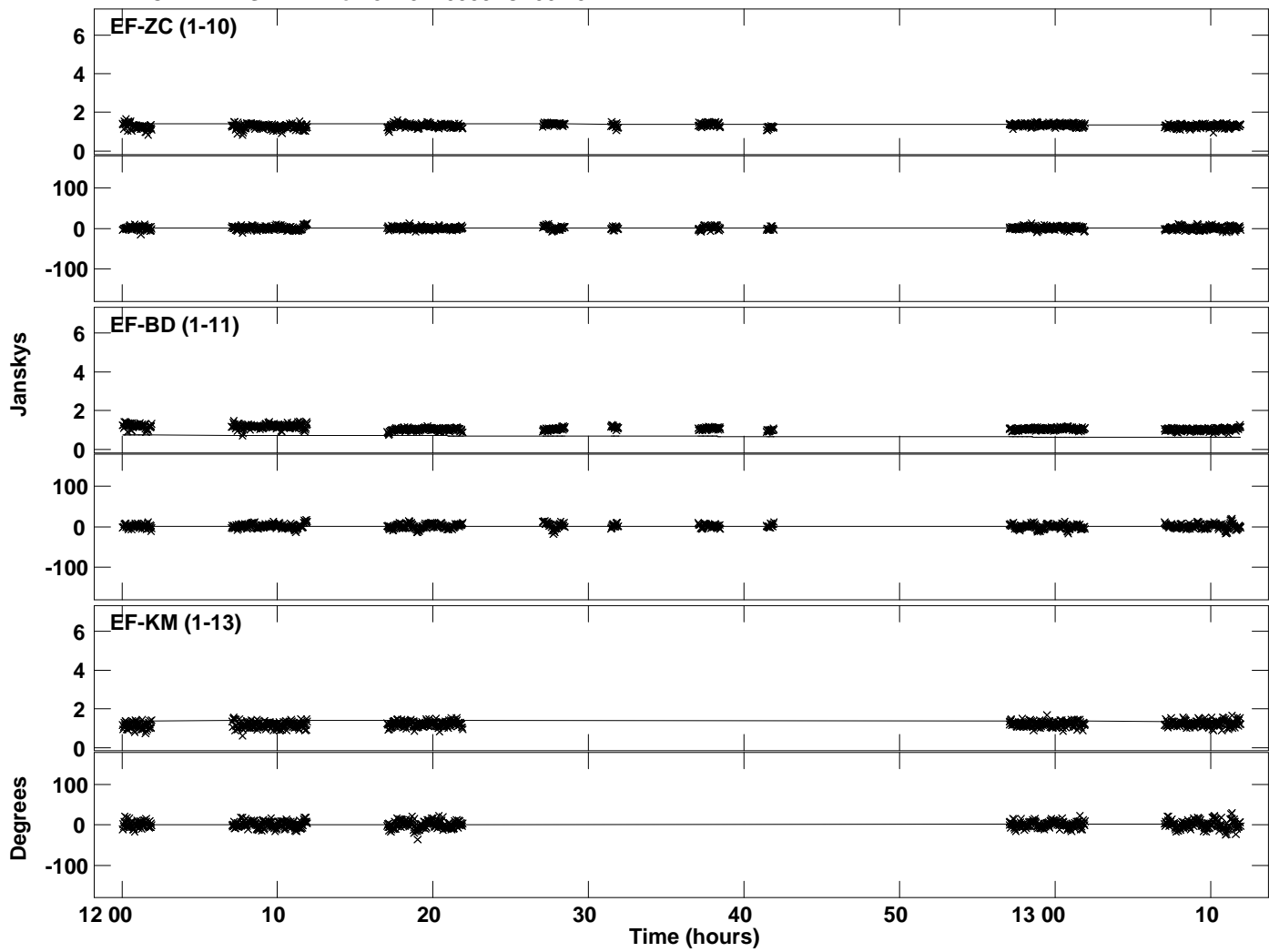
Plot file version 1 created 31-JAN-2020 16:35:27
Amplitude and Phase vs Time for J1751+0939.MULTI.1 CL # 3
IF 1 CHAN 1 STK RR of J1751+0939.ICL001.3



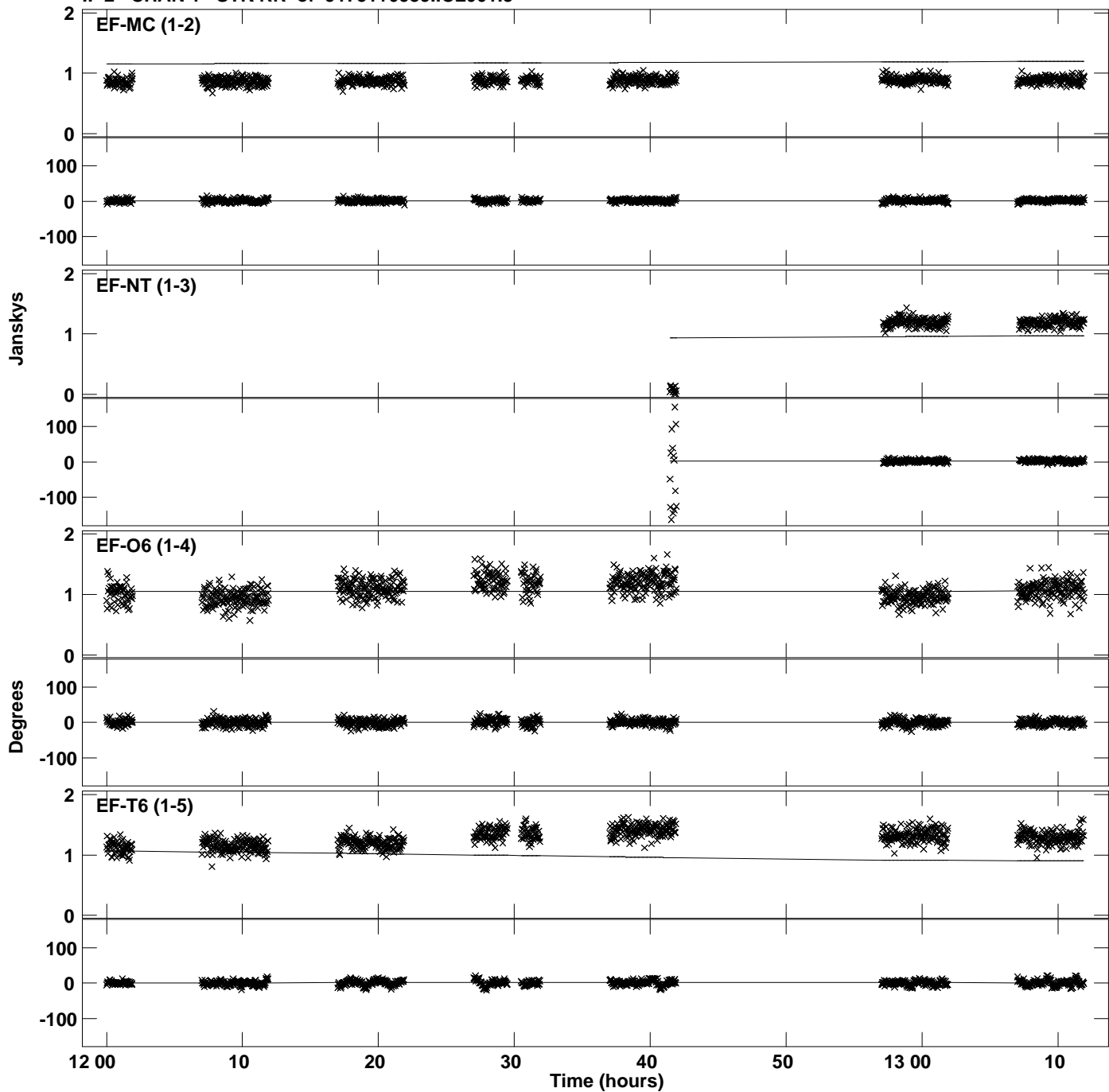
Plot file version 2 created 31-JAN-2020 16:35:27
Amplitude and Phase vs Time for J1751+0939.MULTI.1 CL # 3
IF 1 CHAN 1 STK RR of J1751+0939.ICL001.3



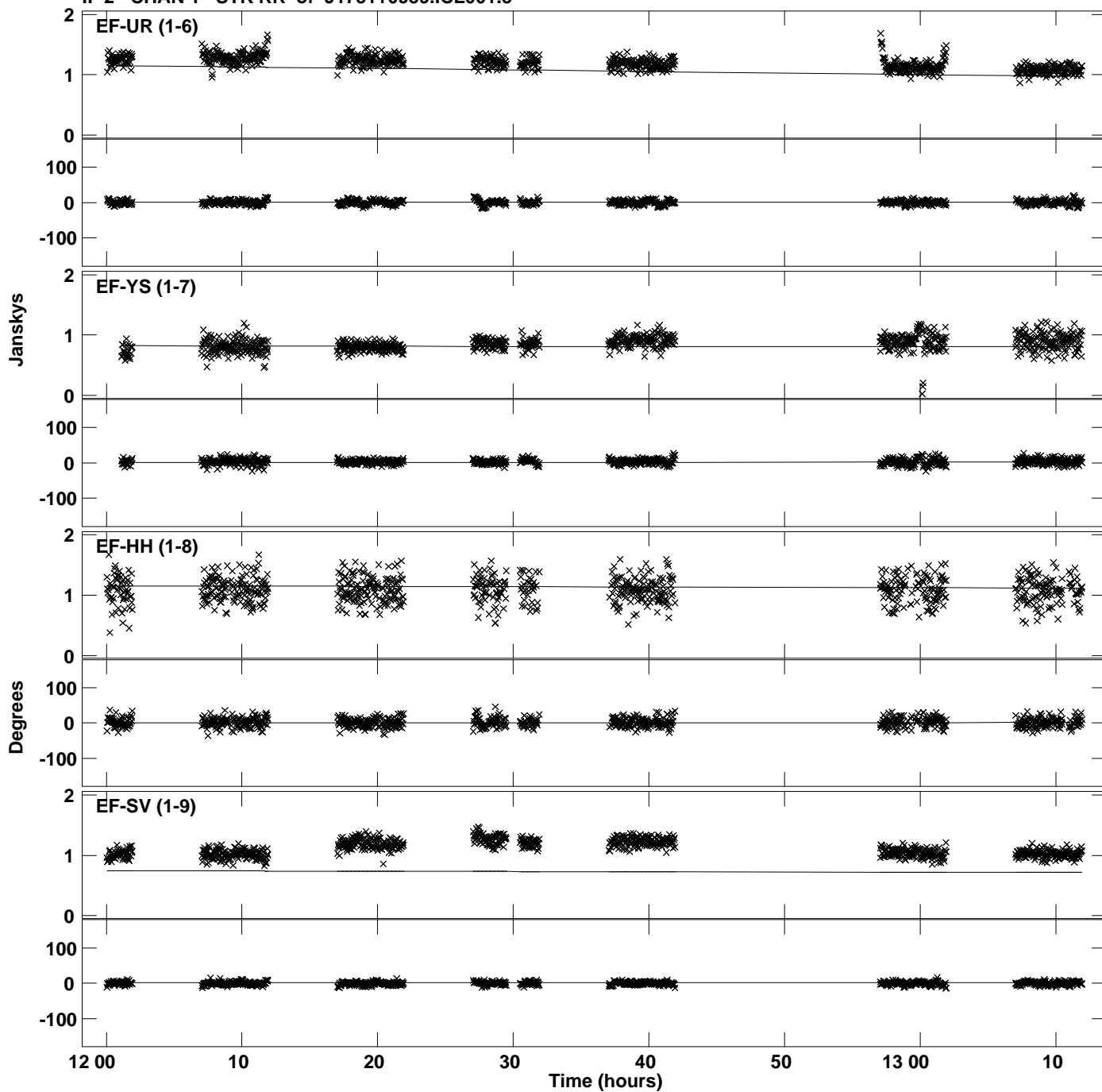
Plot file version 3 created 31-JAN-2020 16:35:27
Amplitude and Phase vs Time for J1751+0939.MULTI.1 CL # 3
IF 1 CHAN 1 STK RR of J1751+0939.ICL001.3



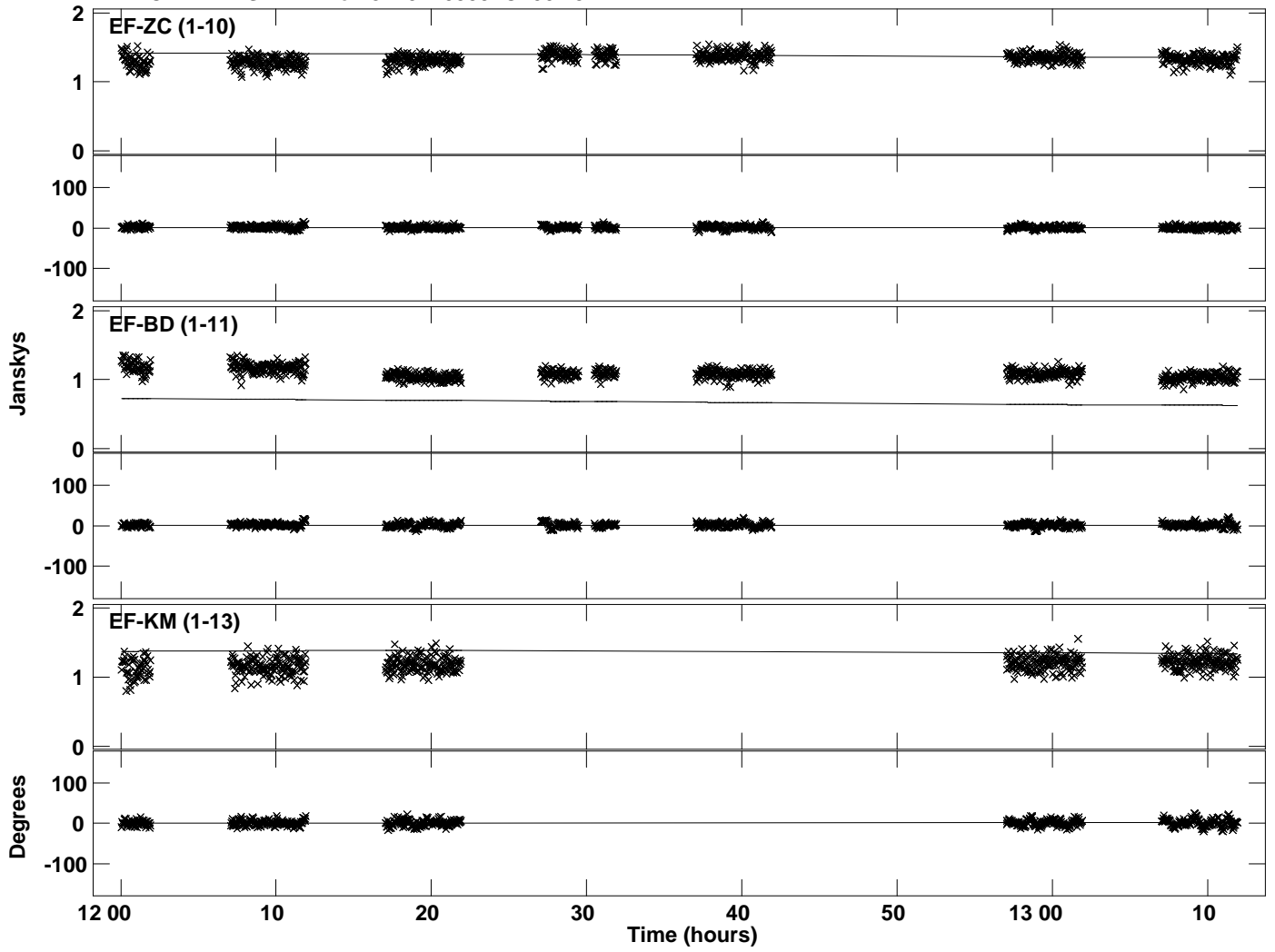
Plot file version 4 created 31-JAN-2020 16:35:29
Amplitude and Phase vs Time for J1751+0939.MULTI.1 CL # 3
IF 2 CHAN 1 STK RR of J1751+0939.ICL001.3



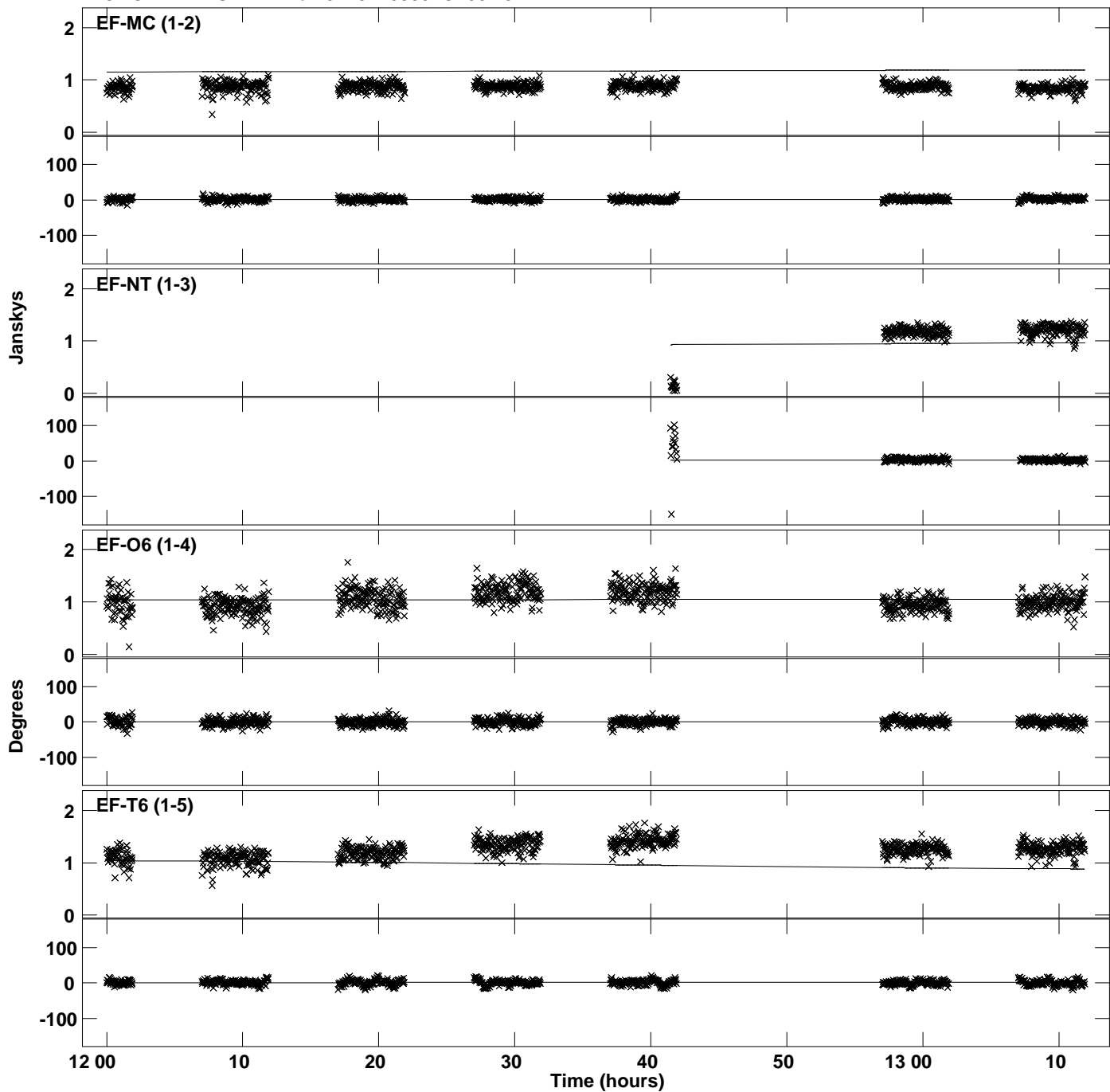
Plot file version 5 created 31-JAN-2020 16:35:29
Amplitude andPhase vs Time for J1751+0939.MULTI.1 CL # 3
IF 2 CHAN 1 STK RR of J1751+0939.ICL001.3



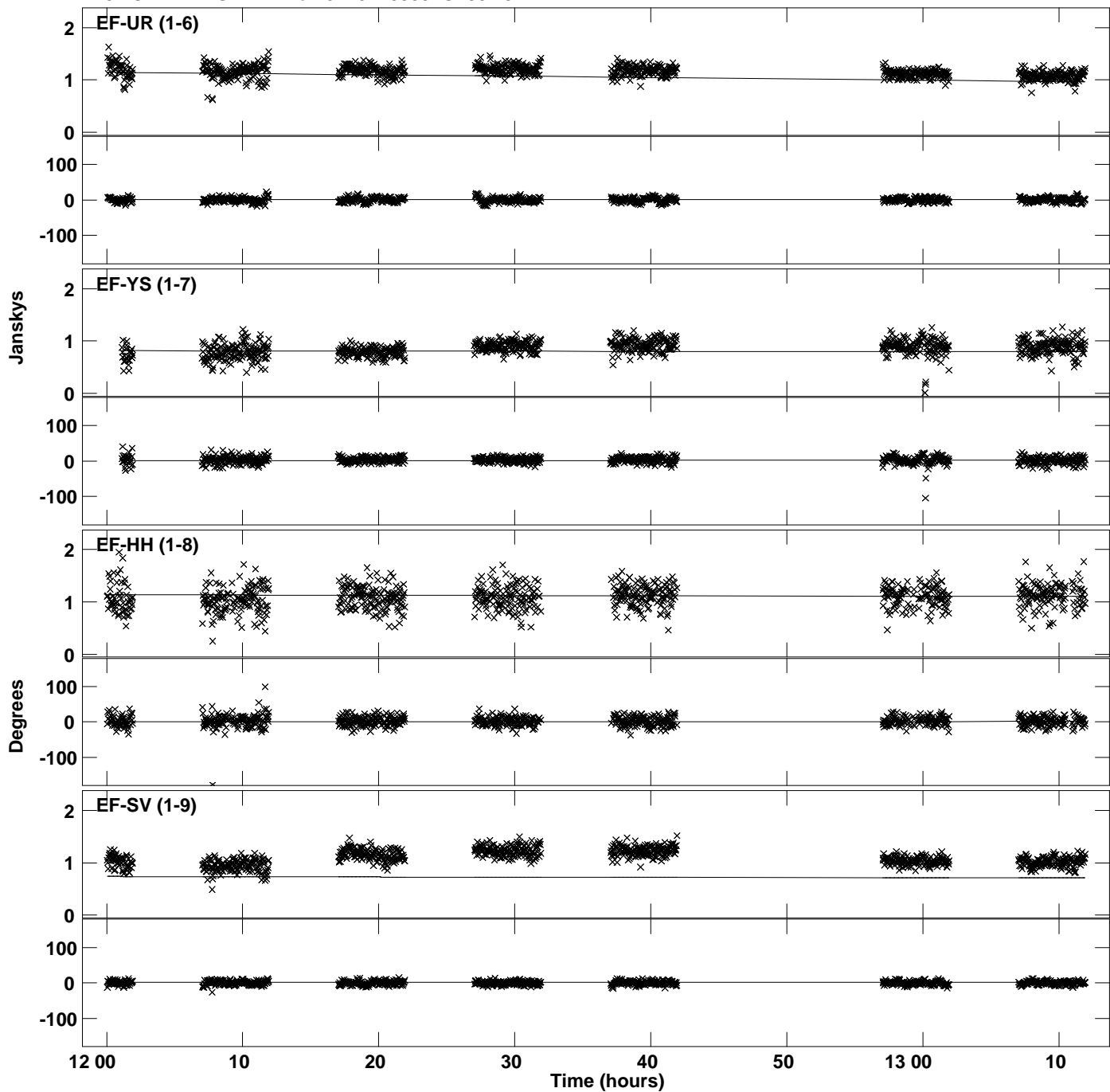
PLot file version 6 created 31-JAN-2020 16:35:29
Amplitude andPhase vs Time for J1751+0939.MULTI.1 CL # 3
IF 2 CHAN 1 STK RR of J1751+0939.ICL001.3



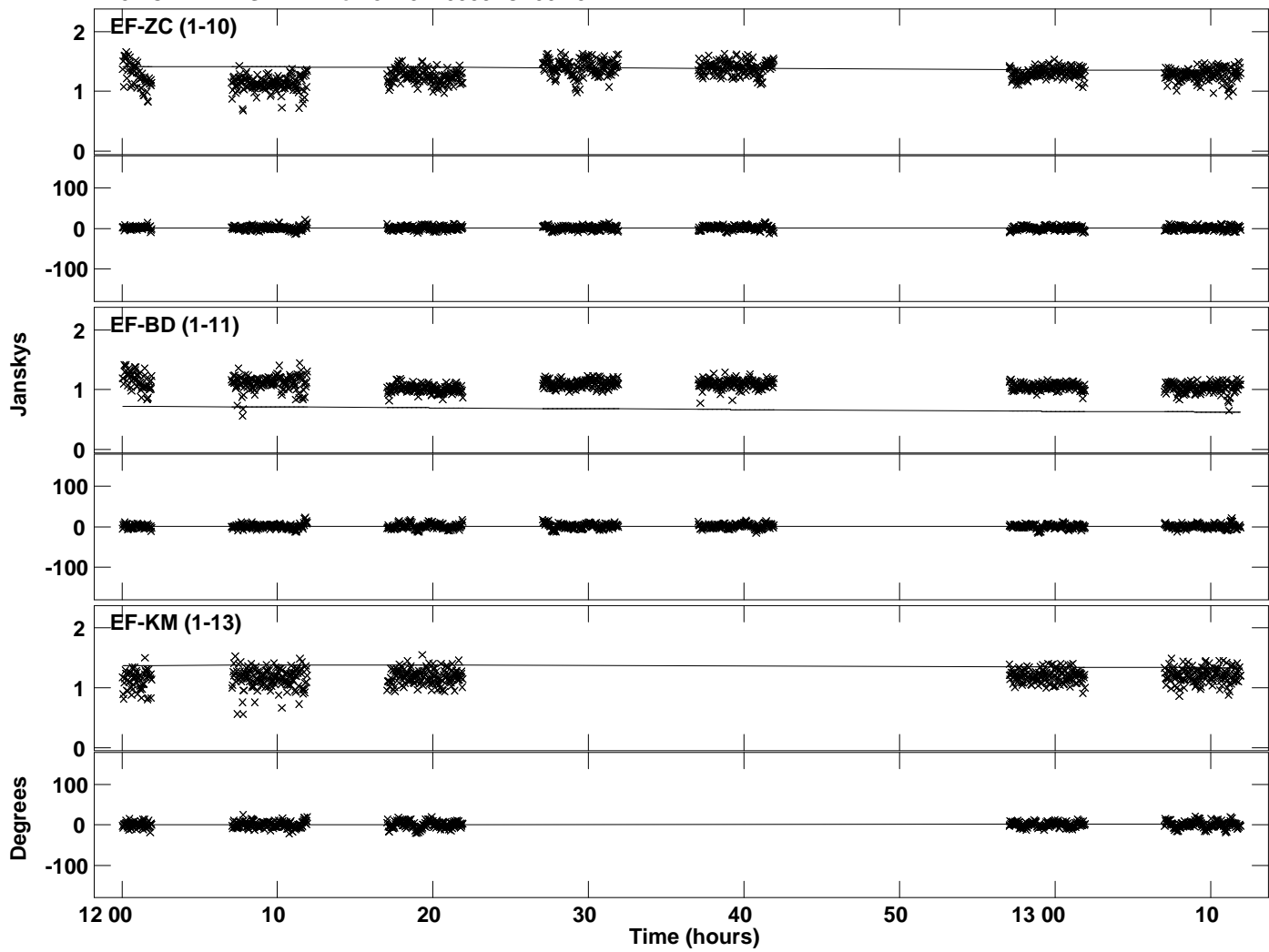
Plot file version 7 created 31-JAN-2020 16:35:29
Amplitude and Phase vs Time for J1751+0939.MULTI.1 CL # 3
IF 3 CHAN 1 STK RR of J1751+0939.ICL001.3



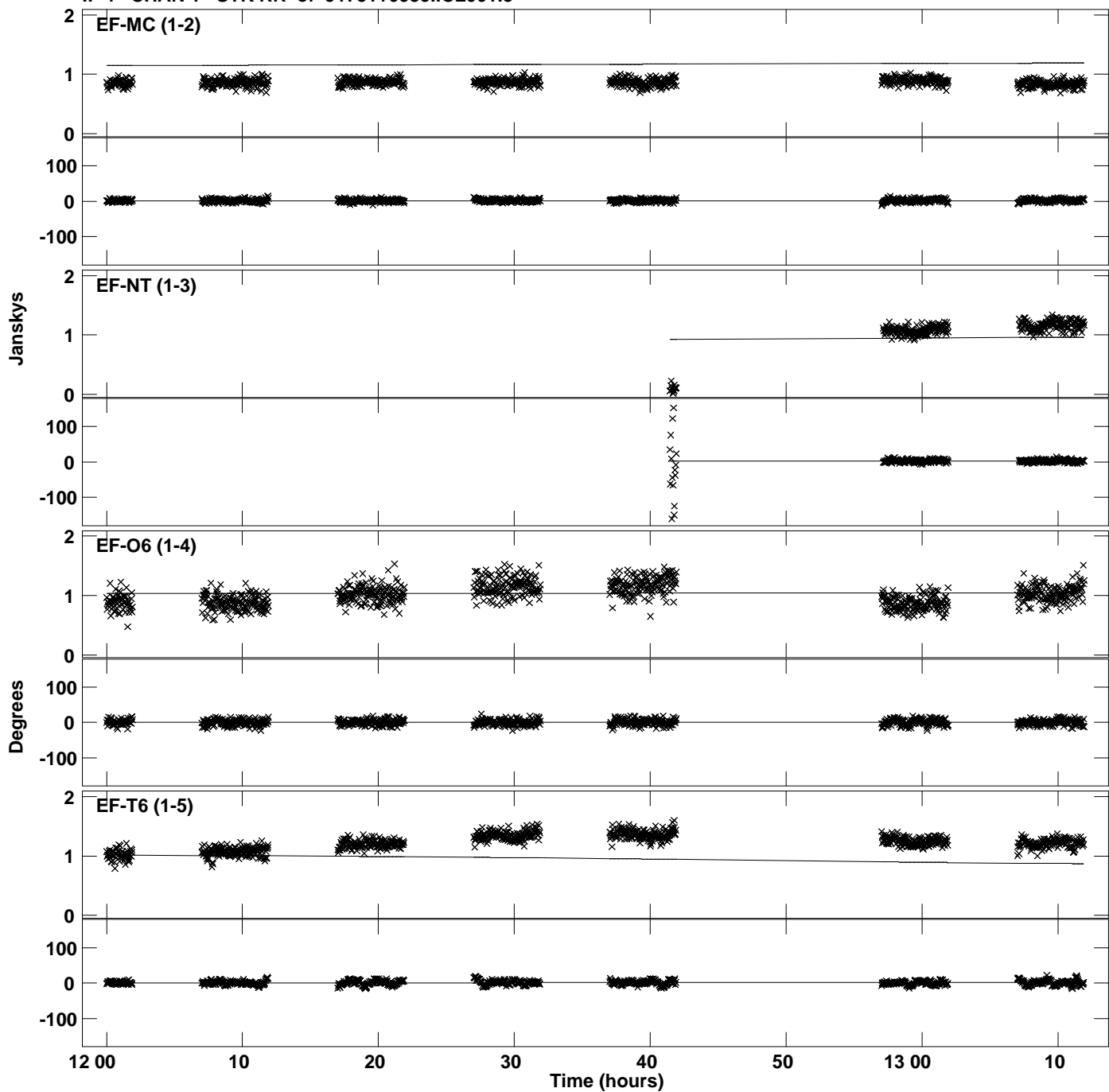
Plot file version 8 created 31-JAN-2020 16:35:29
Amplitude and Phase vs Time for J1751+0939.MULTI.1 CL # 3
IF 3 CHAN 1 STK RR of J1751+0939.ICL001.3



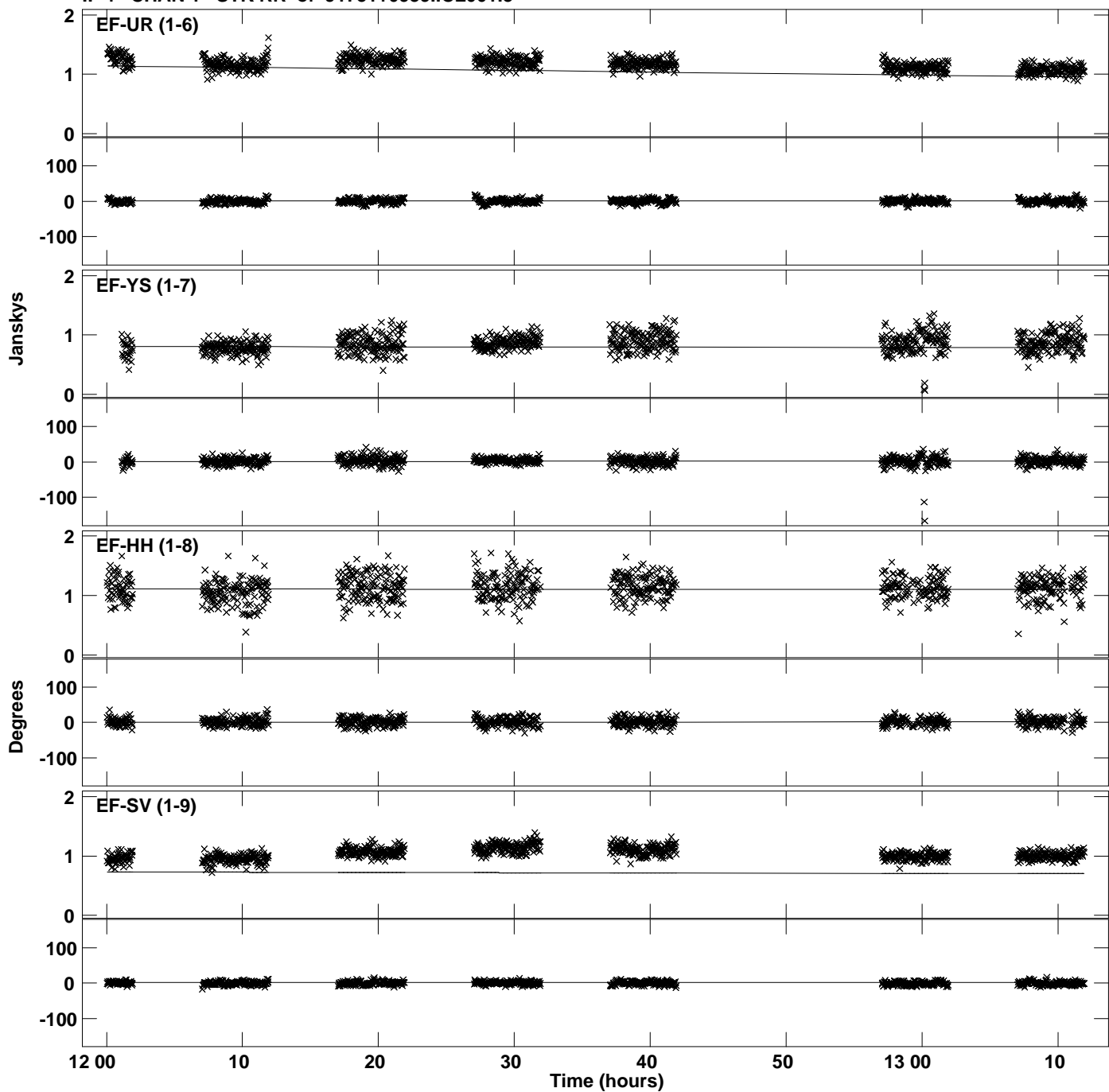
Plot file version 9 created 31-JAN-2020 16:35:29
Amplitude and Phase vs Time for J1751+0939.MULTI.1 CL # 3
IF 3 CHAN 1 STK RR of J1751+0939.ICL001.3



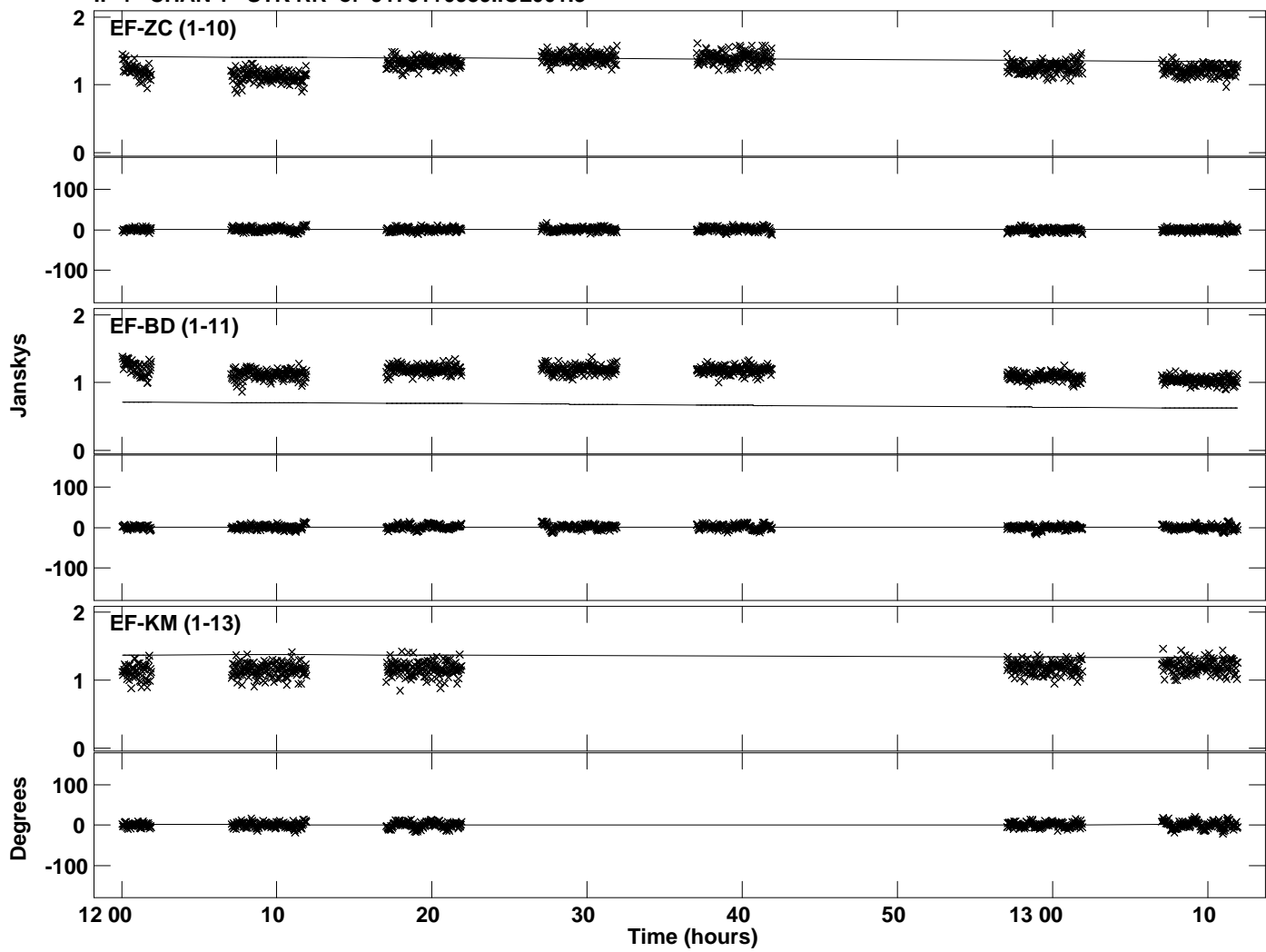
Plot file version 10 created 31-JAN-2020 16:35:30
Amplitude and Phase vs Time for J1751+0939.MULTI.1 CL # 3
IF 4 CHAN 1 STK RR of J1751+0939.ICL001.3



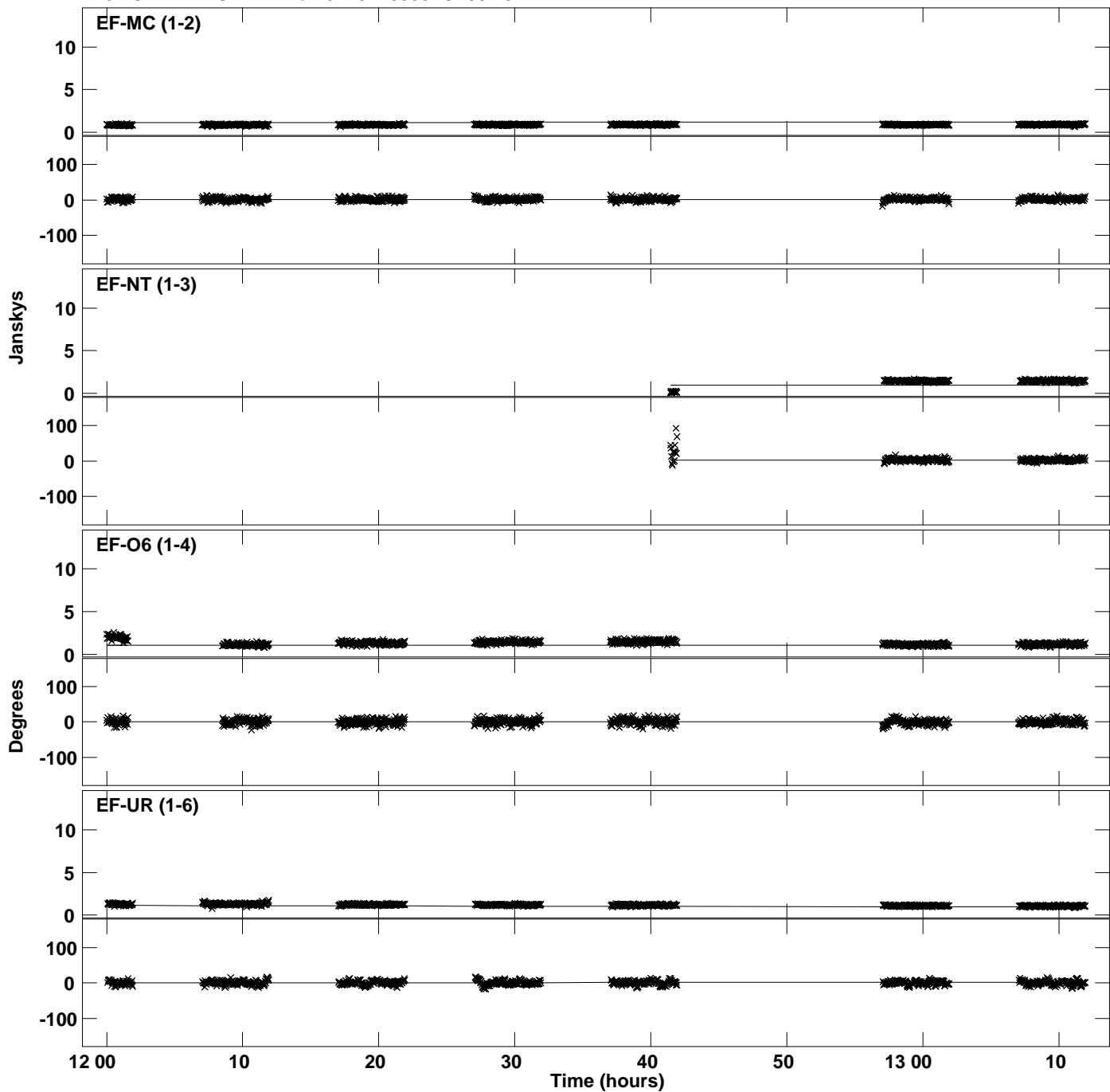
Plot file version 11 created 31-JAN-2020 16:35:30
Amplitude and Phase vs Time for J1751+0939.MULTI.1 CL # 3
IF 4 CHAN 1 STK RR of J1751+0939.ICL001.3



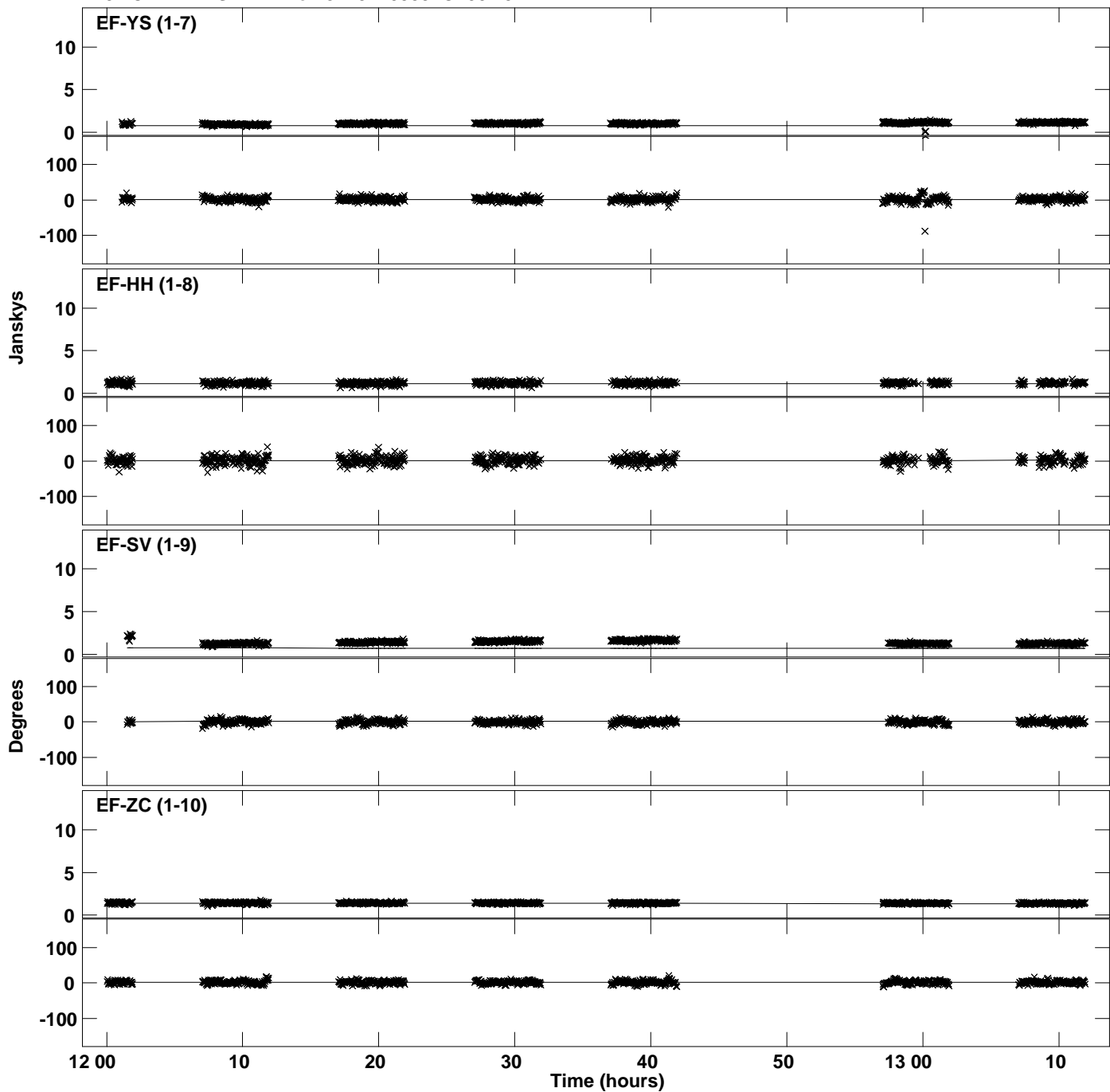
PLot file version 12 created 31-JAN-2020 16:35:30
Amplitude andPhase vs Time for J1751+0939.MULTI.1 CL # 3
IF 4 CHAN 1 STK RR of J1751+0939.ICL001.3



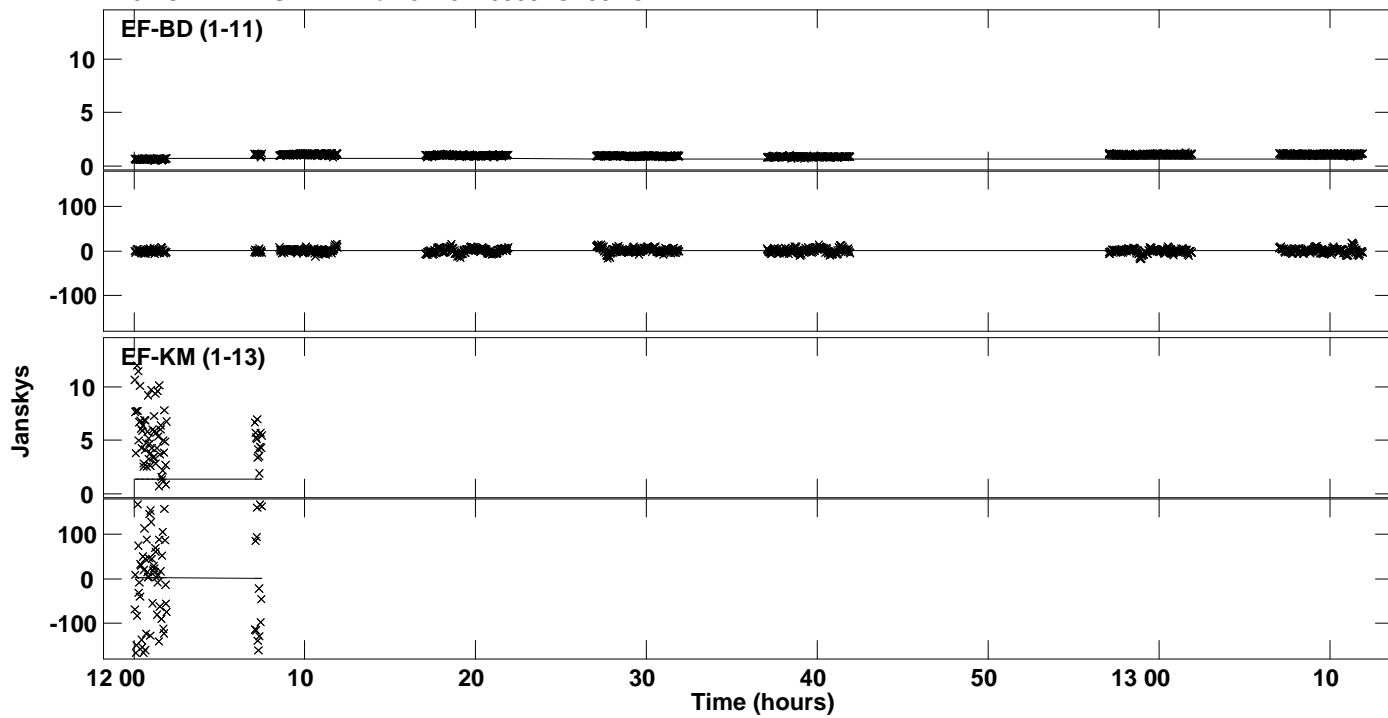
Plot file version 13 created 31-JAN-2020 16:35:31
Amplitude and Phase vs Time for J1751+0939.MULTI.1 CL # 3
IF 5 CHAN 1 STK RR of J1751+0939.ICL001.3



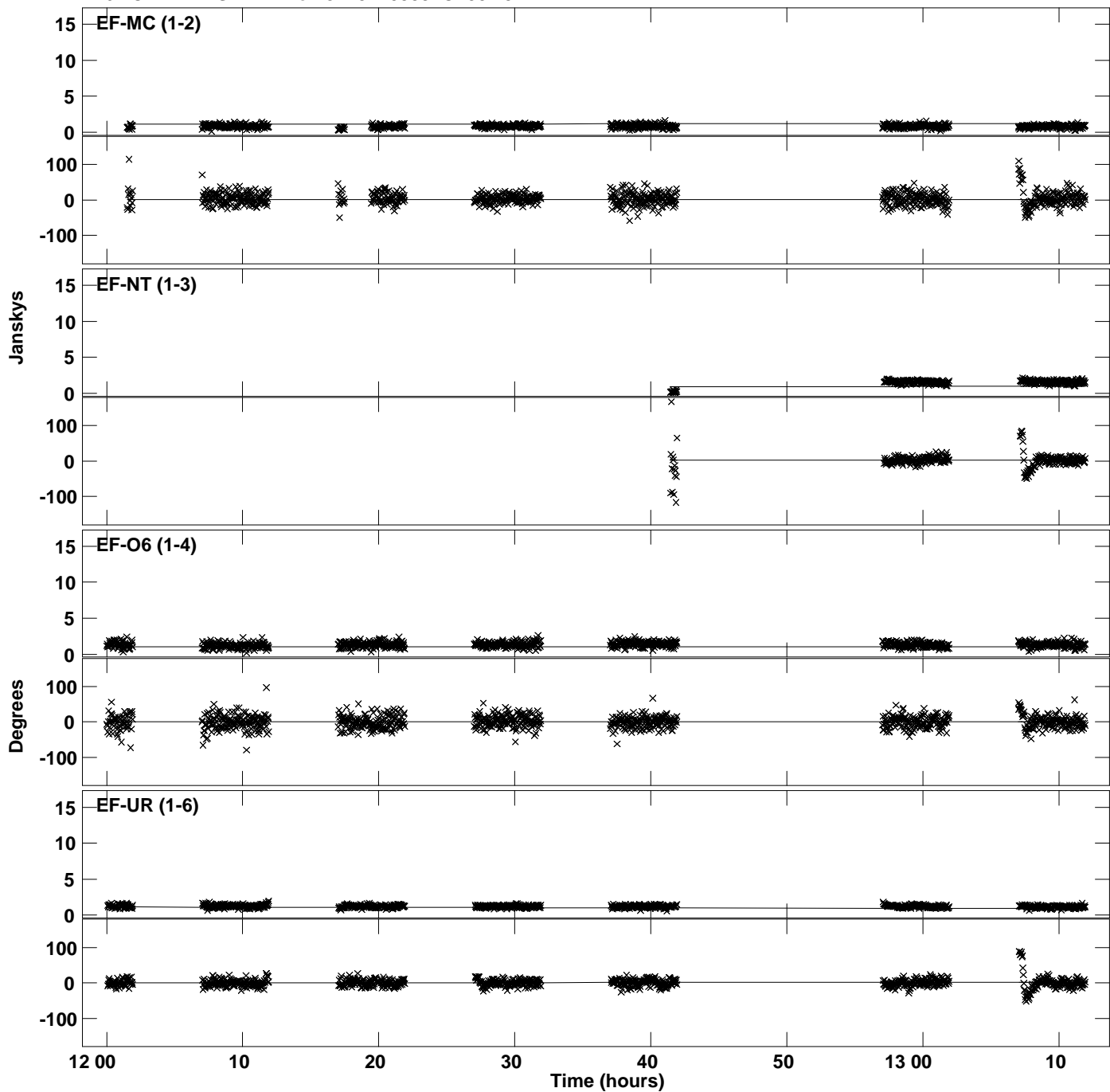
Plot file version 14 created 31-JAN-2020 16:35:31
Amplitude and Phase vs Time for J1751+0939.MULTI.1 CL # 3
IF 5 CHAN 1 STK RR of J1751+0939.ICL001.3



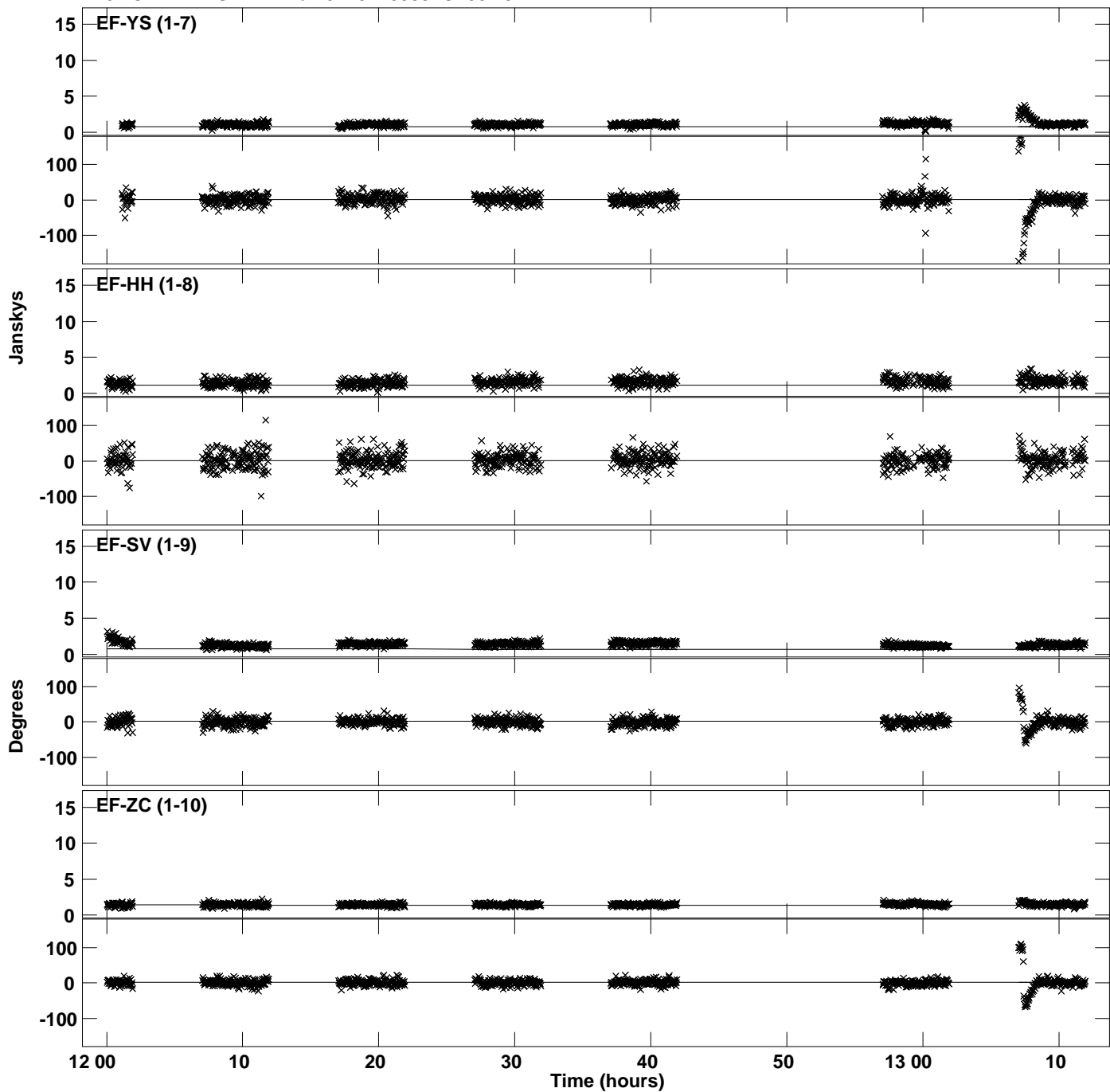
Plot file version 15 created 31-JAN-2020 16:35:31
Amplitude and Phase vs Time for J1751+0939.MULTI.1 CL # 3
IF 5 CHAN 1 STK RR of J1751+0939.ICL001.3



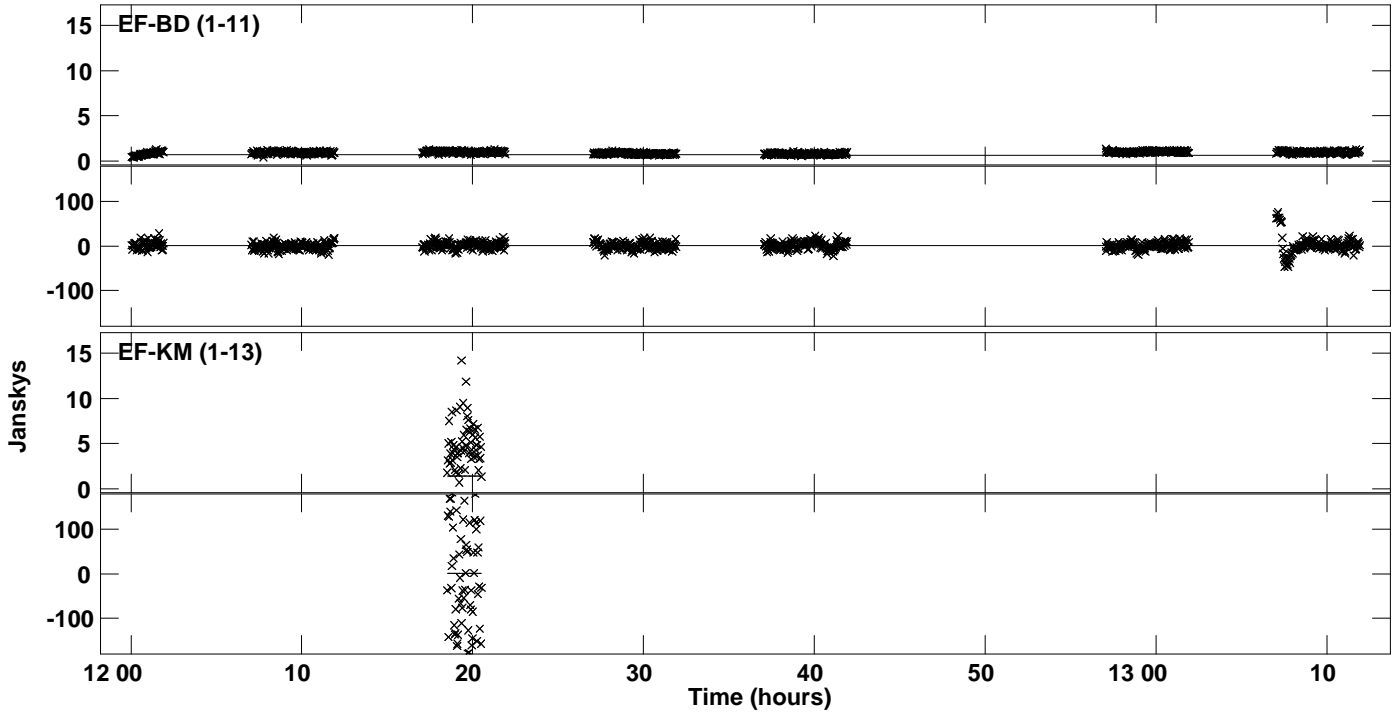
Plot file version 16 created 31-JAN-2020 16:35:32
Amplitude and Phase vs Time for J1751+0939.MULTI.1 CL # 3
IF 6 CHAN 1 STK RR of J1751+0939.ICL001.3



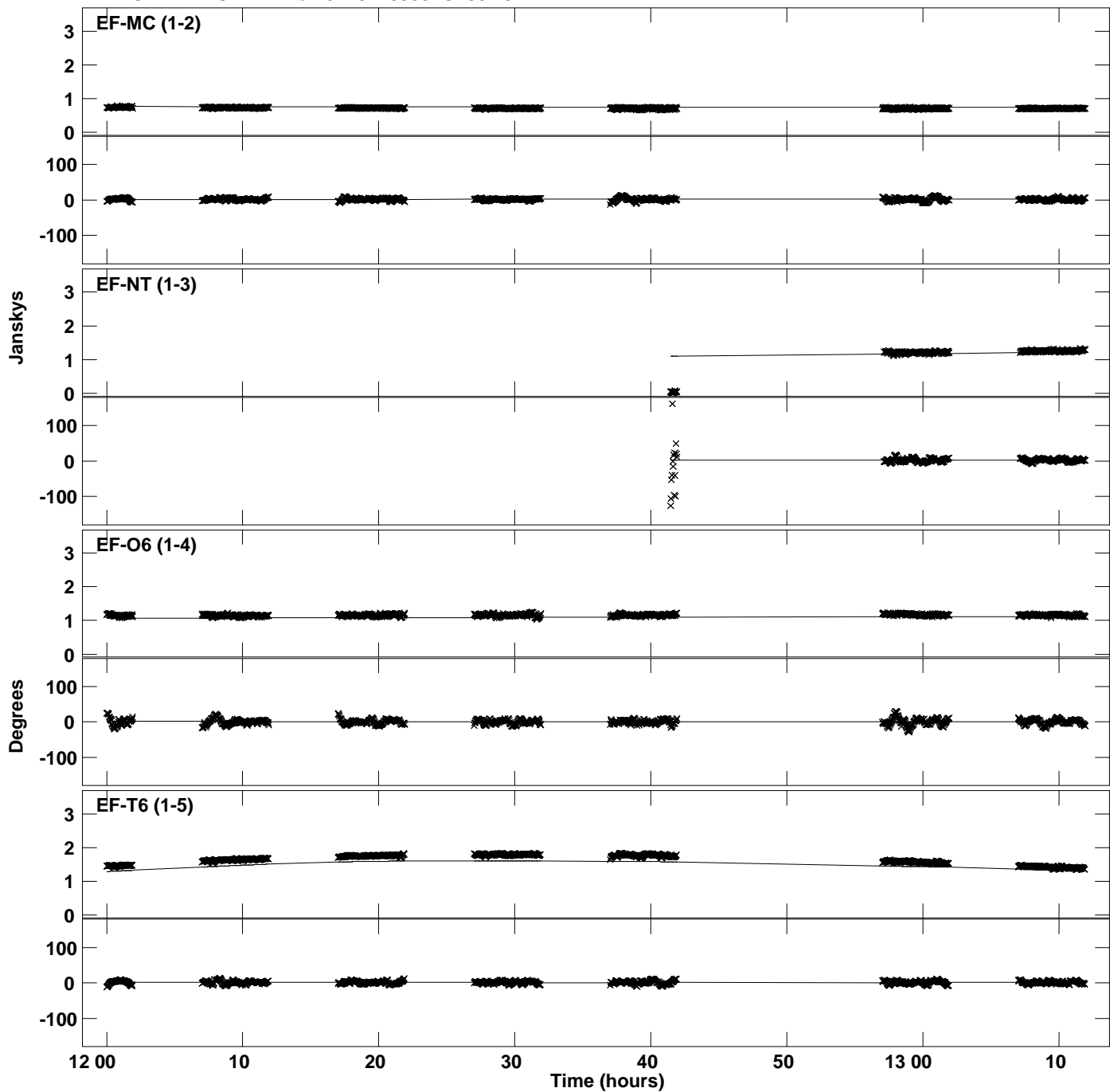
Plot file version 17 created 31-JAN-2020 16:35:32
Amplitude and Phase vs Time for J1751+0939.MULTI.1 CL # 3
IF 6 CHAN 1 STK RR of J1751+0939.ICL001.3



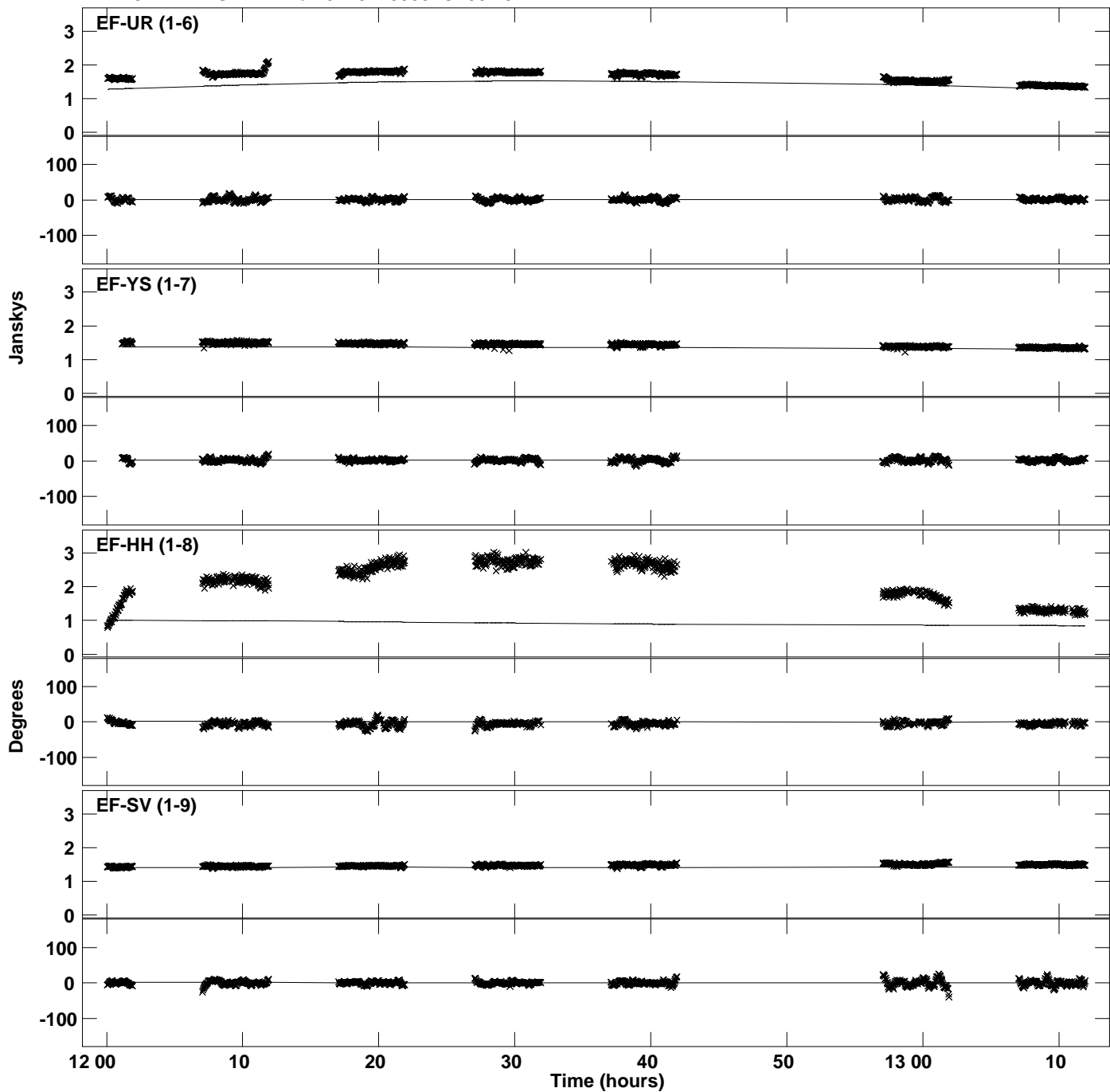
PLot file version 18 created 31-JAN-2020 16:35:32
Amplitude andPhase vs Time for J1751+0939.MULTI.1 CL # 3
IF 6 CHAN 1 STK RR of J1751+0939.ICL001.3



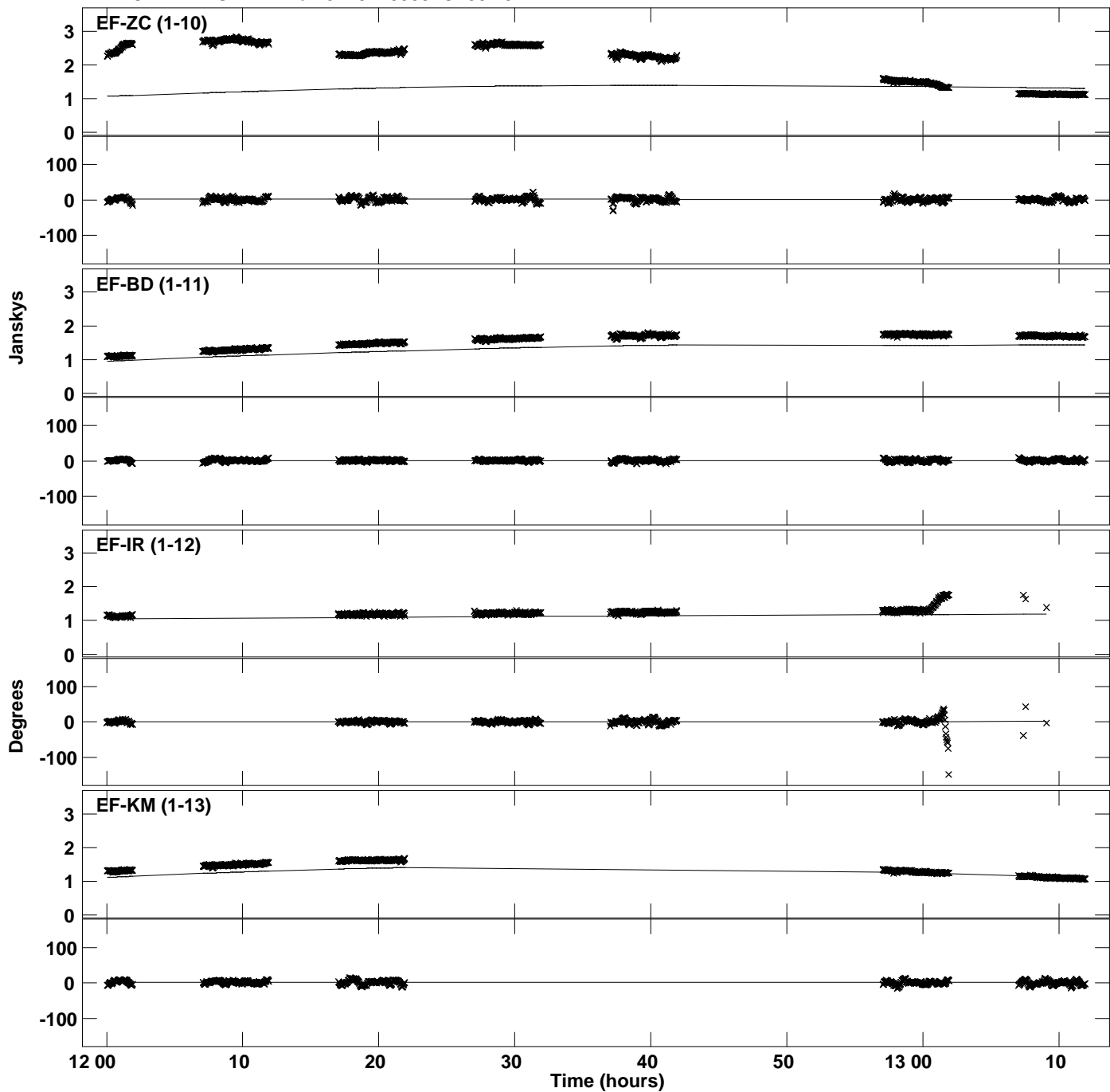
Plot file version 19 created 31-JAN-2020 16:35:34
Amplitude and Phase vs Time for J1751+0939.MULTI.1 CL # 3
IF 7 CHAN 1 STK RR of J1751+0939.ICL001.3



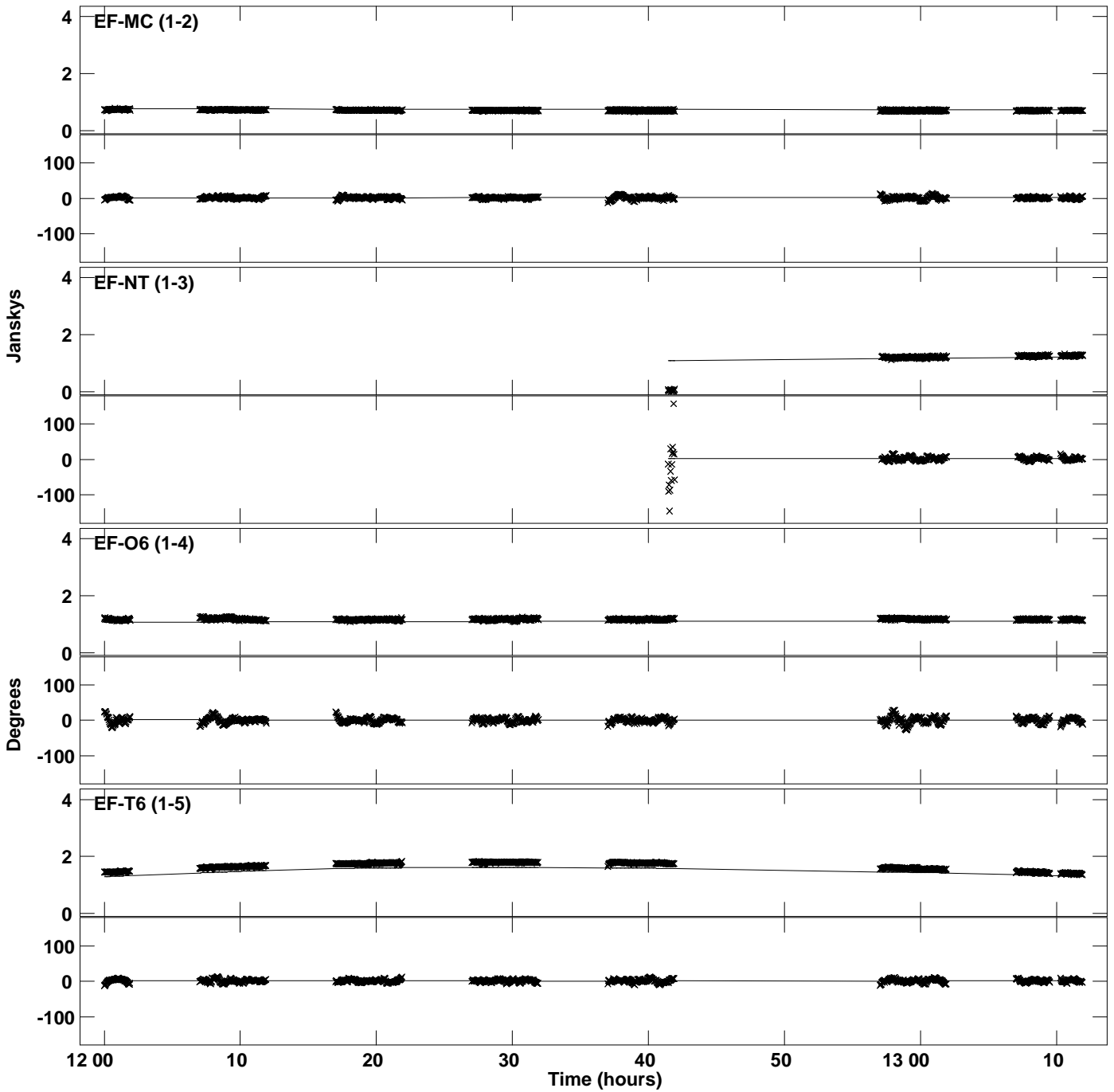
Plot file version 20 created 31-JAN-2020 16:35:34
Amplitude and Phase vs Time for J1751+0939.MULTI.1 CL # 3
IF 7 CHAN 1 STK RR of J1751+0939.ICL001.3



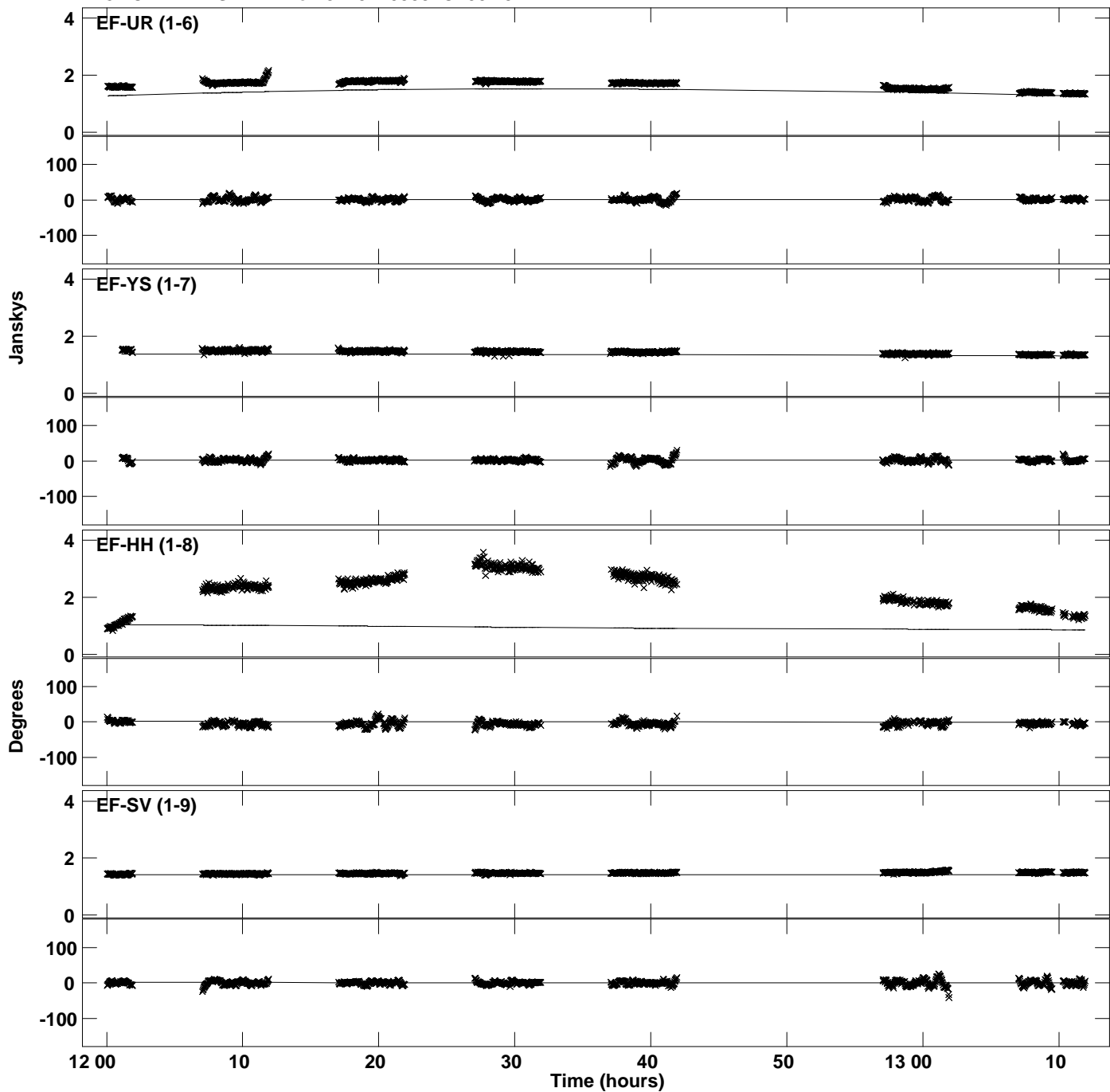
Plot file version 21 created 31-JAN-2020 16:35:34
Amplitude and Phase vs Time for J1751+0939.MULTI.1 CL # 3
IF 7 CHAN 1 STK RR of J1751+0939.ICL001.3



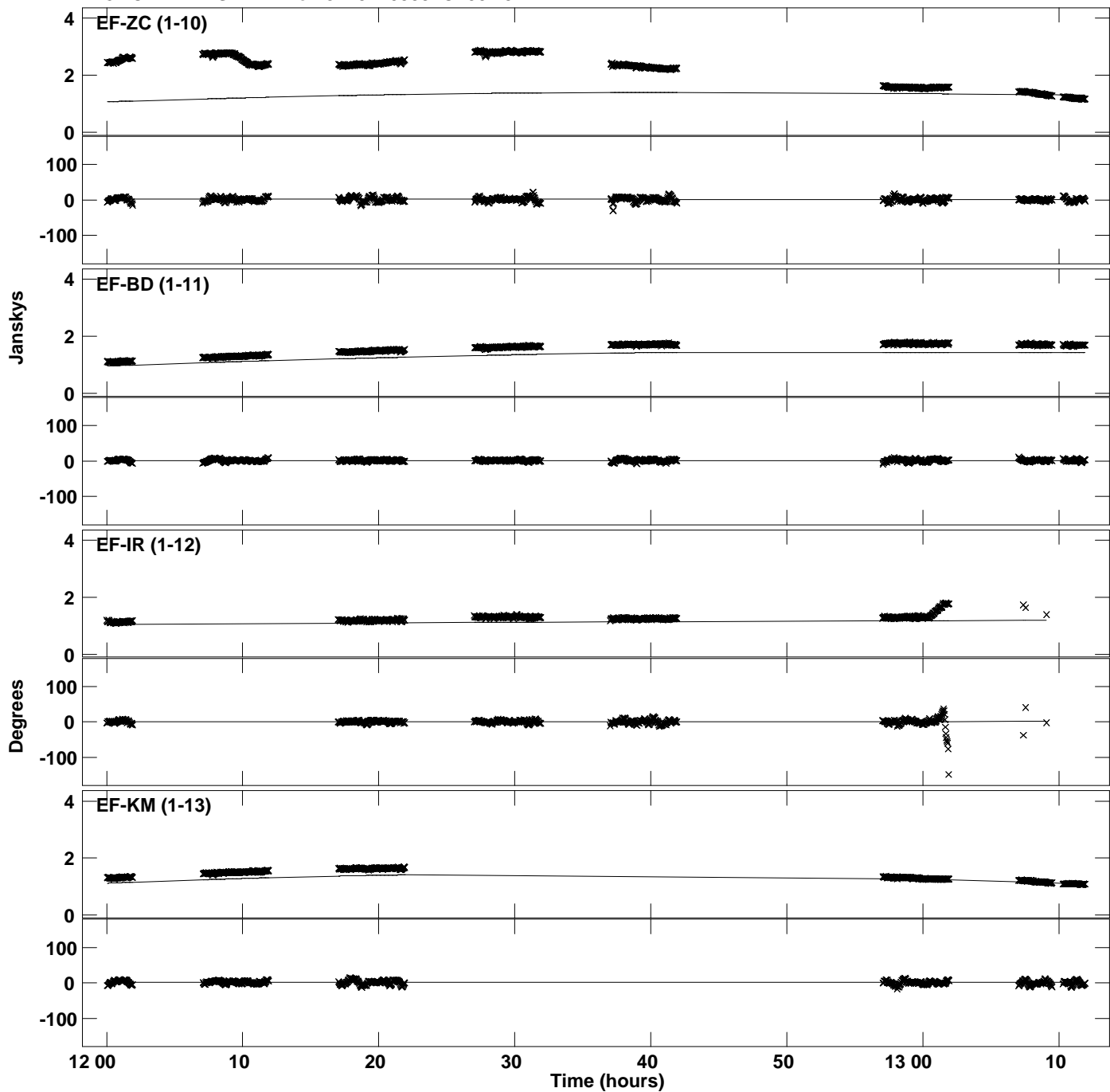
Plot file version 22 created 31-JAN-2020 16:35:36
Amplitude and Phase vs Time for J1751+0939.MULTI.1 CL # 3
IF 8 CHAN 1 STK RR of J1751+0939.ICL001.3



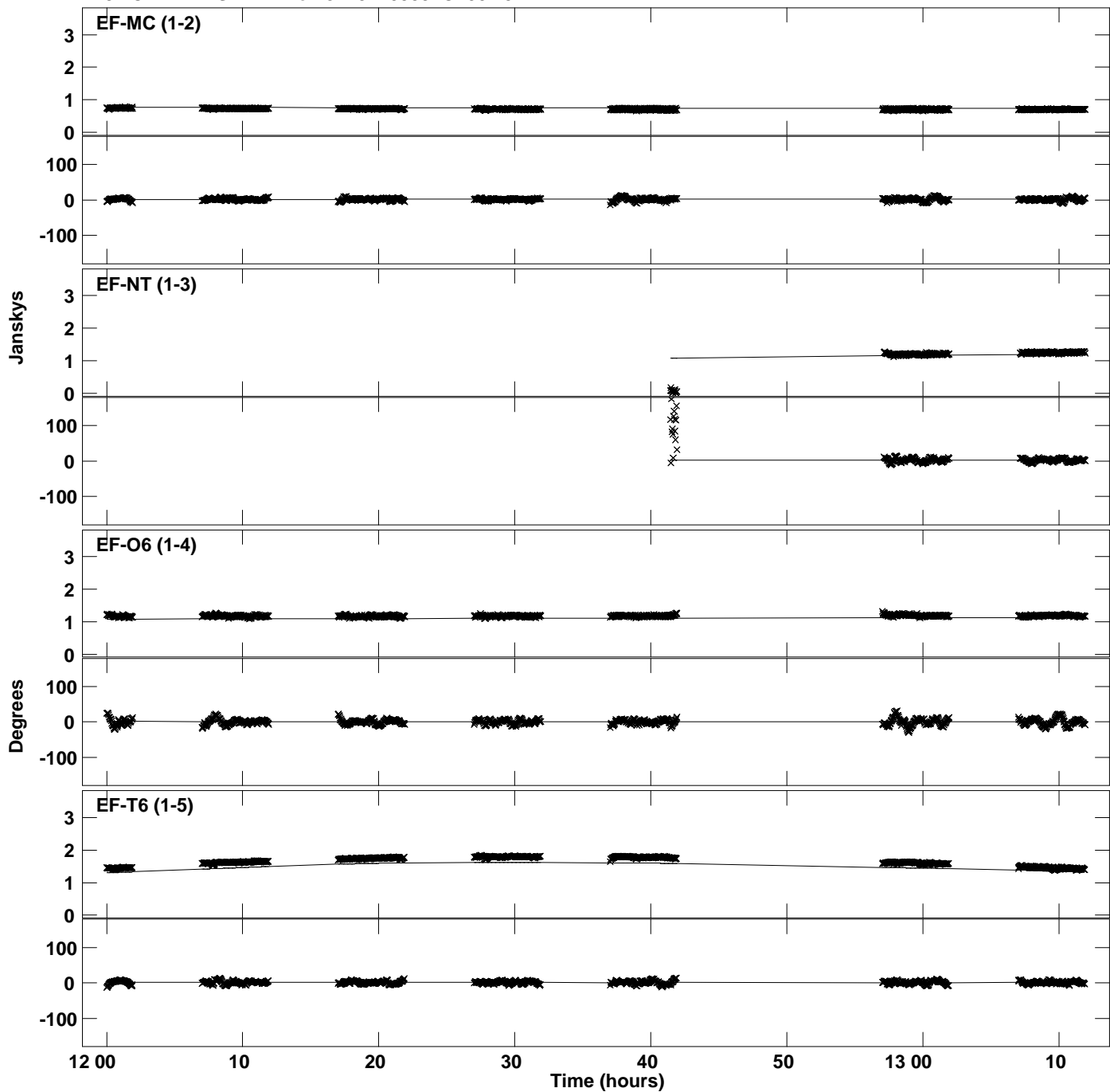
PLot file version 23 created 31-JAN-2020 16:35:36
Amplitude andPhase vs Time for J1751+0939.MULTI.1 CL # 3
IF 8 CHAN 1 STK RR of J1751+0939.ICL001.3



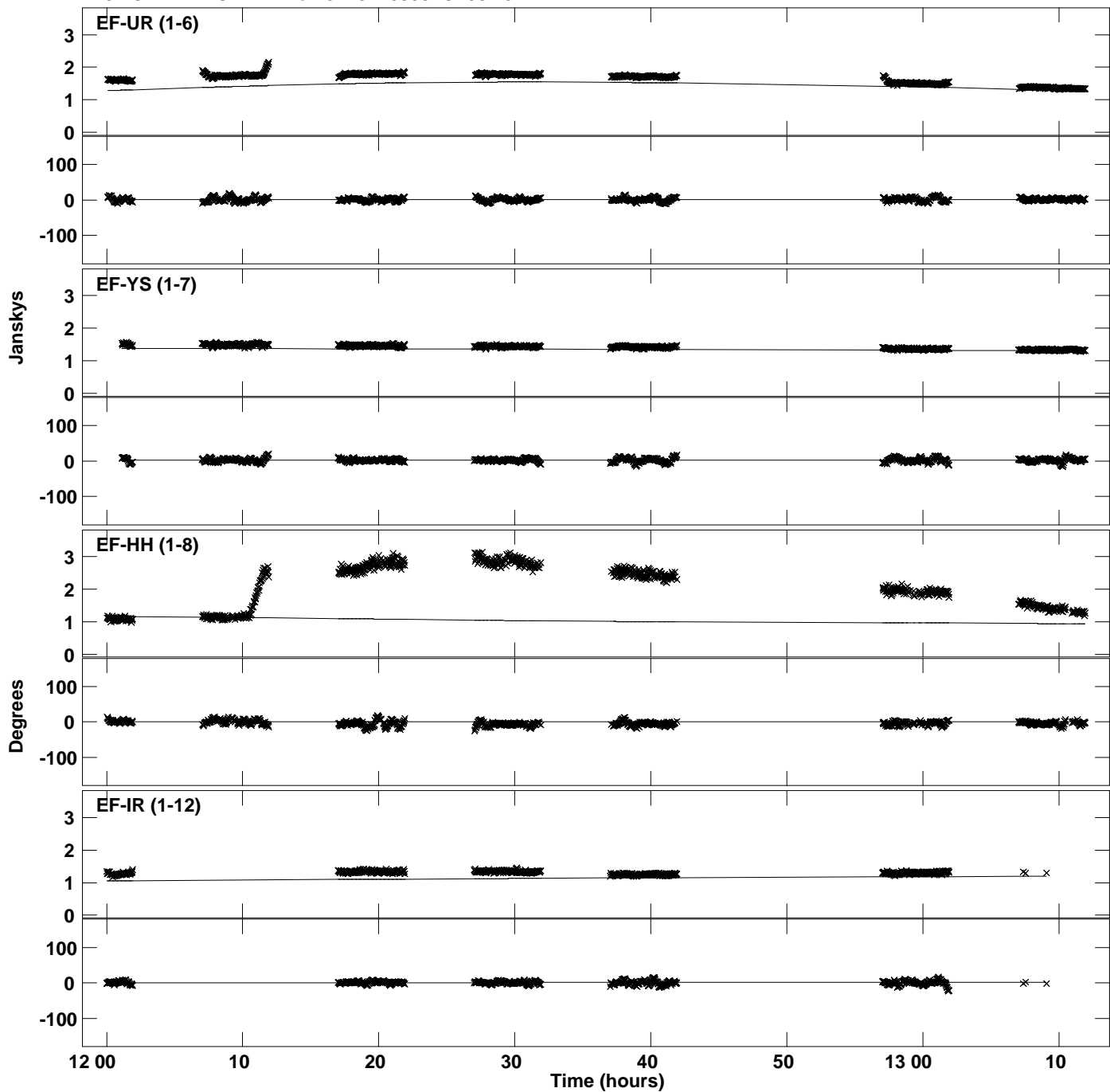
Plot file version 24 created 31-JAN-2020 16:35:36
Amplitude andPhase vs Time for J1751+0939.MULTI.1 CL # 3
IF 8 CHAN 1 STK RR of J1751+0939.ICL001.3



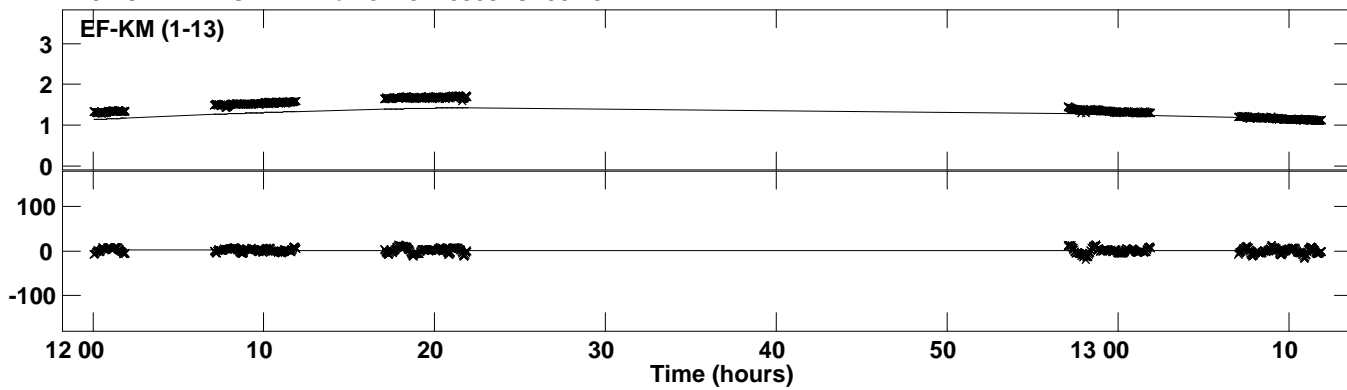
Plot file version 25 created 31-JAN-2020 16:35:37
Amplitude and Phase vs Time for J1751+0939.MULTI.1 CL # 3
IF 9 CHAN 1 STK RR of J1751+0939.ICL001.3



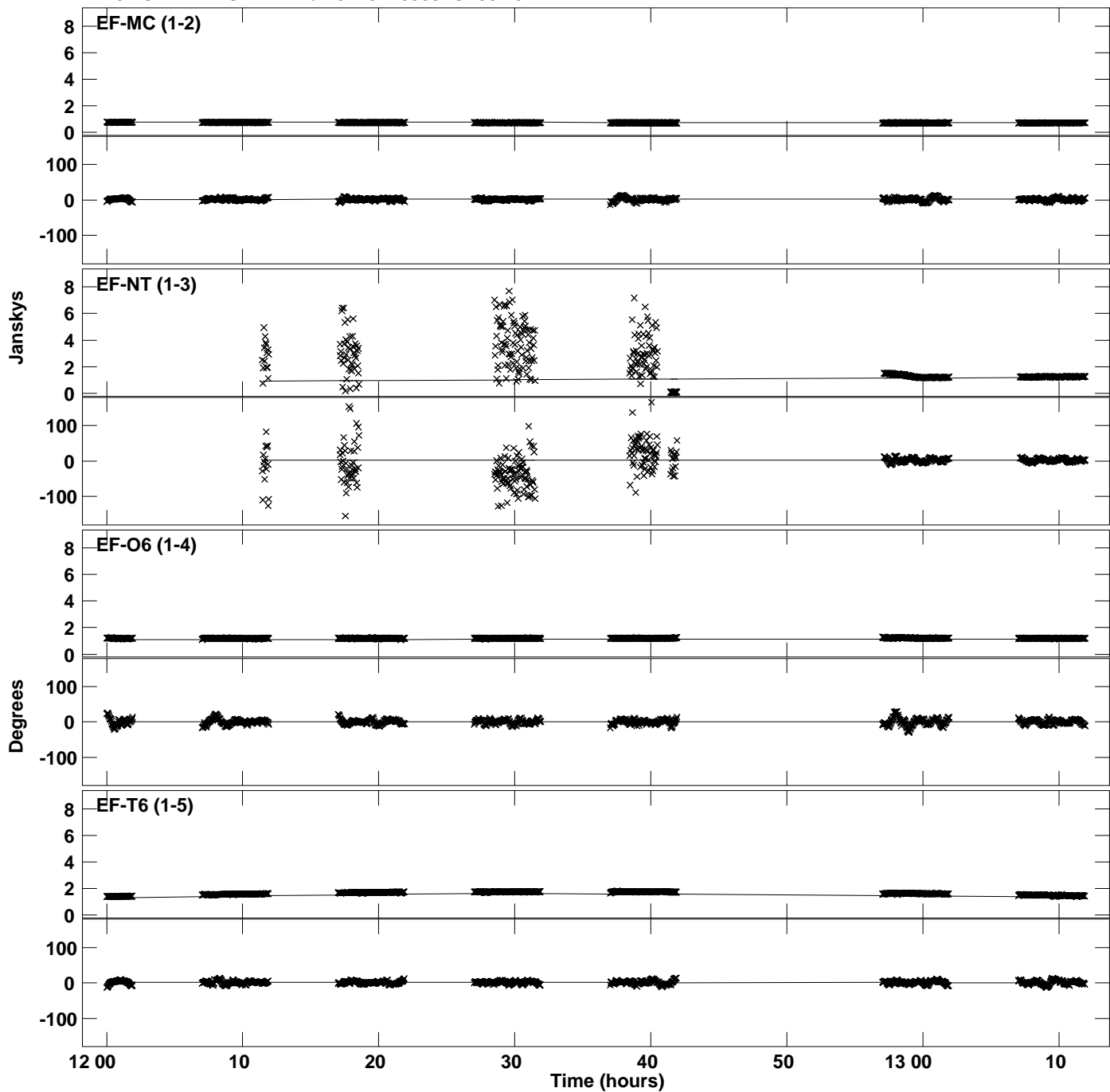
PLot file version 26 created 31-JAN-2020 16:35:37
Amplitude andPhase vs Time for J1751+0939.MULTI.1 CL # 3
IF 9 CHAN 1 STK RR of J1751+0939.ICL001.3



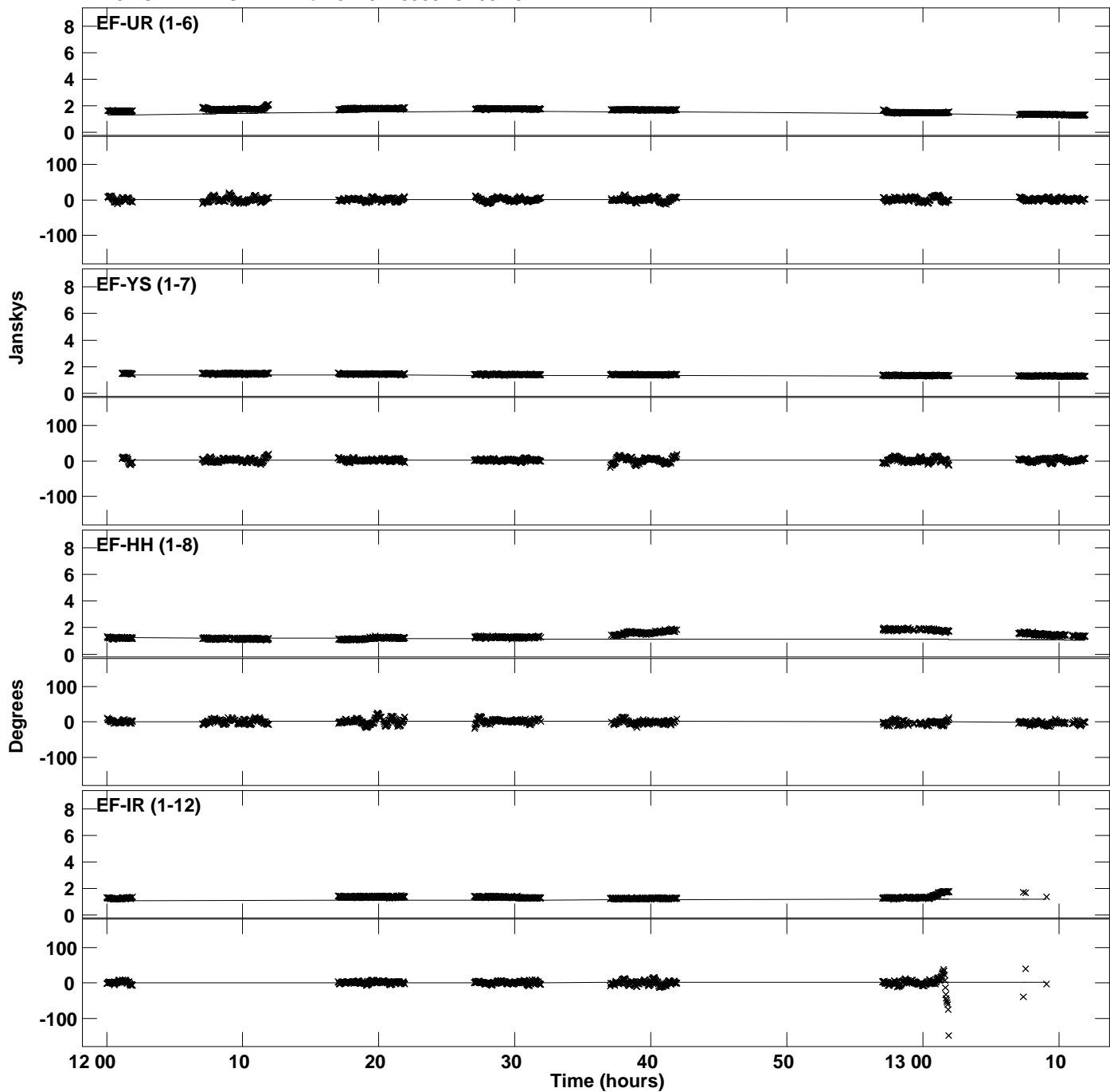
PLot file version 27 created 31-JAN-2020 16:35:37
Amplitude andPhase vs Time for J1751+0939.MULTI.1 CL # 3
IF 9 CHAN 1 STK RR of J1751+0939.ICL001.3



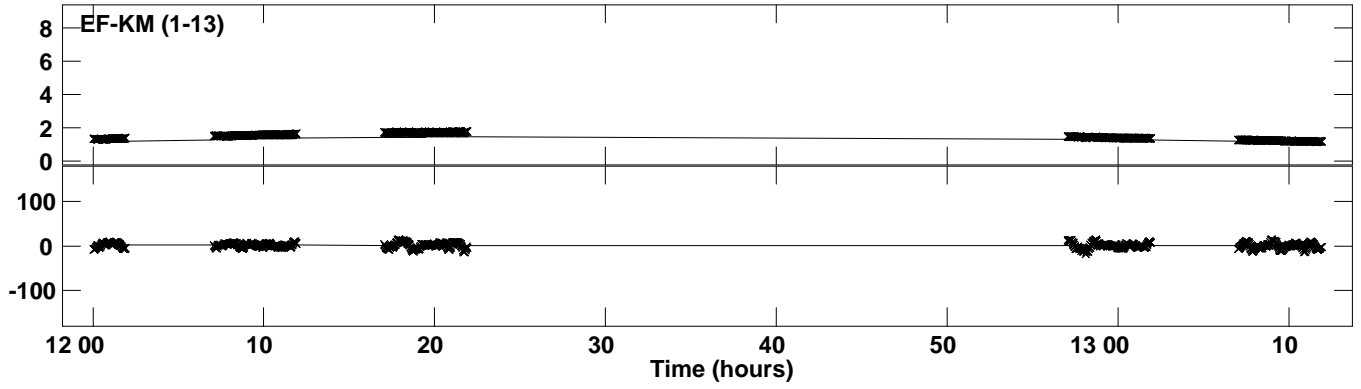
Plot file version 28 created 31-JAN-2020 16:35:39
Amplitude and Phase vs Time for J1751+0939.MULTI.1 CL # 3
IF 10 CHAN 1 STK RR of J1751+0939.ICL001.3



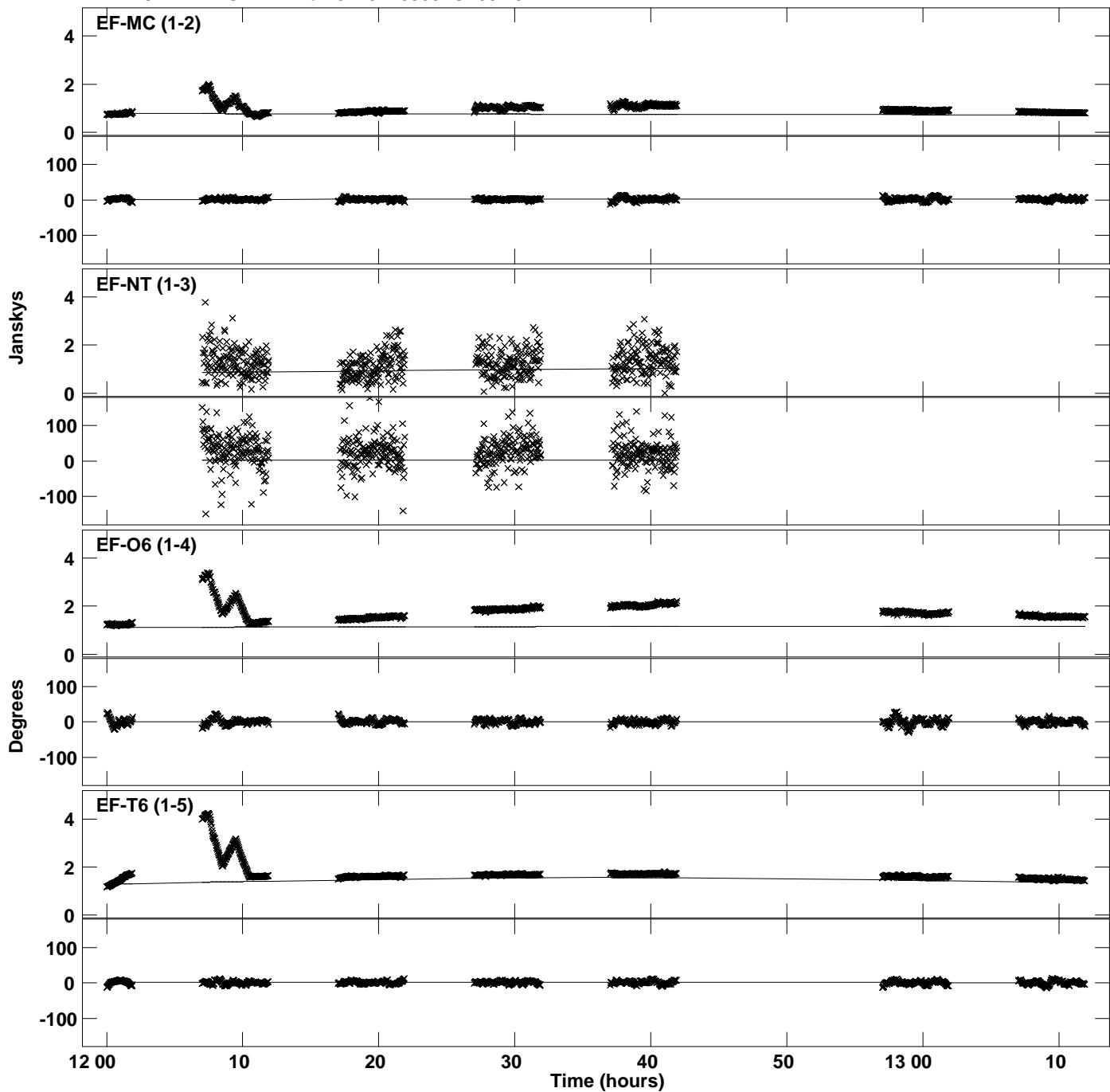
Plot file version 29 created 31-JAN-2020 16:35:39
Amplitude and Phase vs Time for J1751+0939.MULTI.1 CL # 3
IF 10 CHAN 1 STK RR of J1751+0939.ICL001.3



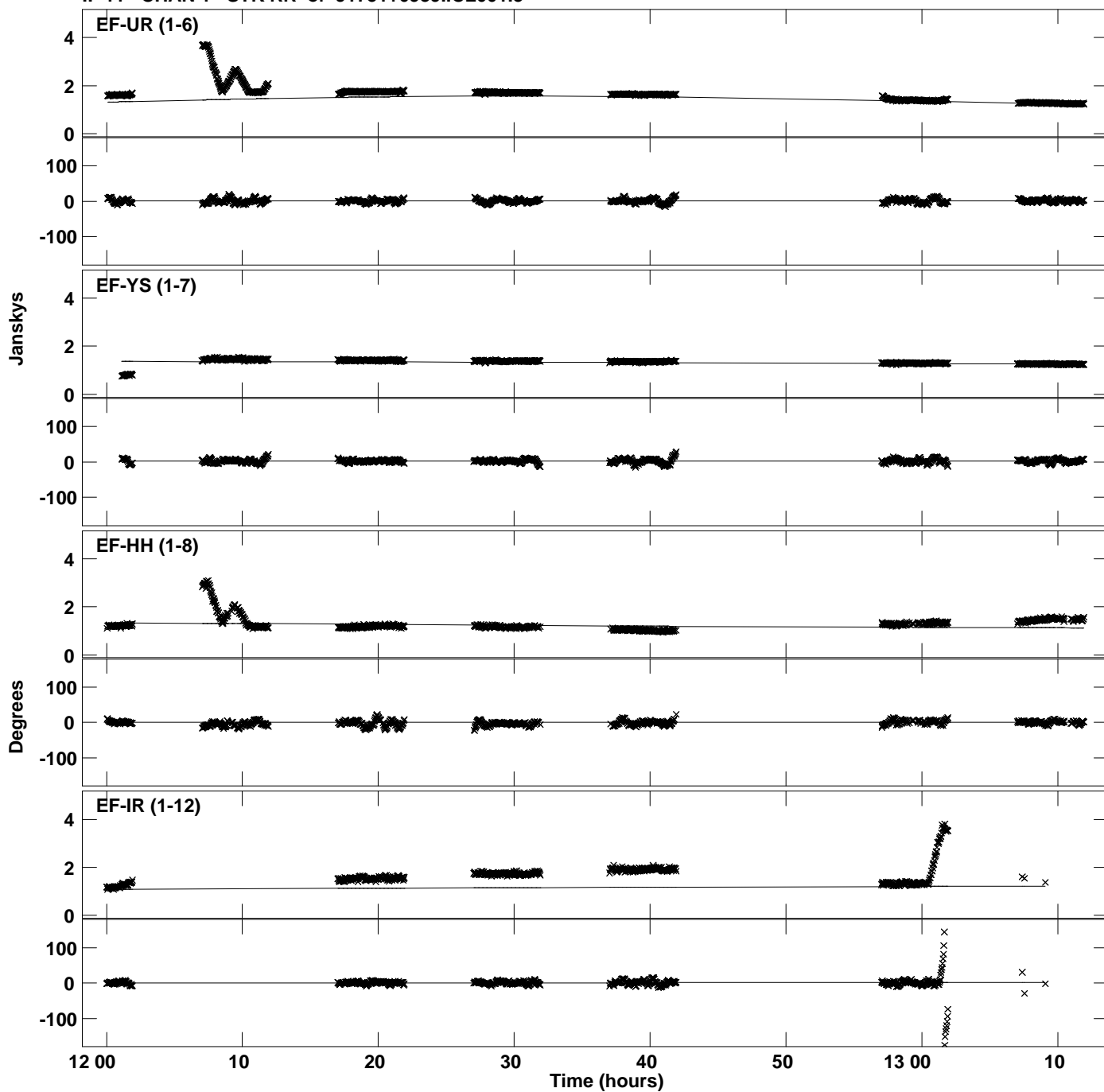
PLot file version 30 created 31-JAN-2020 16:35:39
Amplitude andPhase vs Time for J1751+0939.MULTI.1 CL # 3
IF 10 CHAN 1 STK RR of J1751+0939.ICL001.3



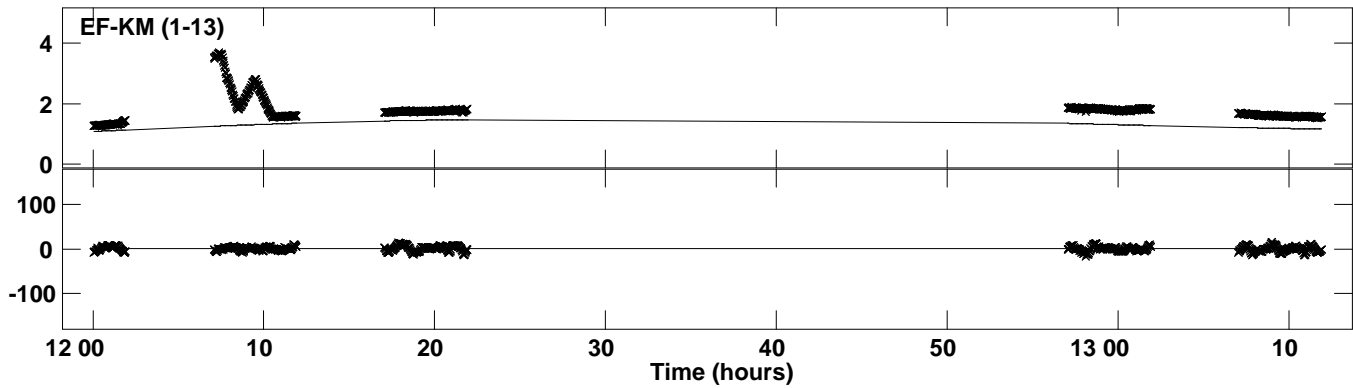
PLot file version 31 created 31-JAN-2020 16:35:41
Amplitude andPhase vs Time for J1751+0939.MULTI.1 CL # 3
IF 11 CHAN 1 STK RR of J1751+0939.ICL001.3



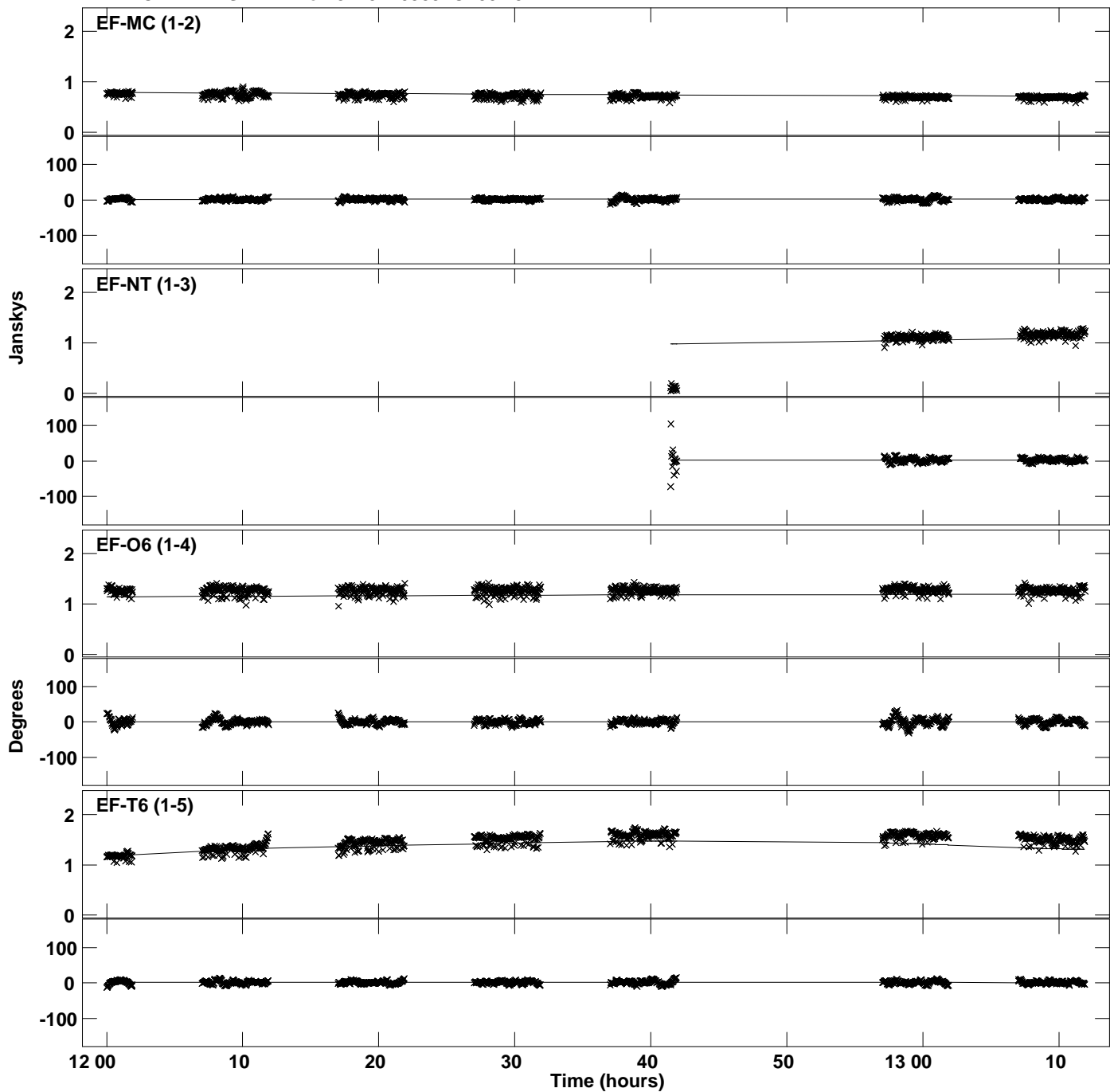
PLot file version 32 created 31-JAN-2020 16:35:41
Amplitude andPhase vs Time for J1751+0939.MULTI.1 CL # 3
IF 11 CHAN 1 STK RR of J1751+0939.ICL001.3



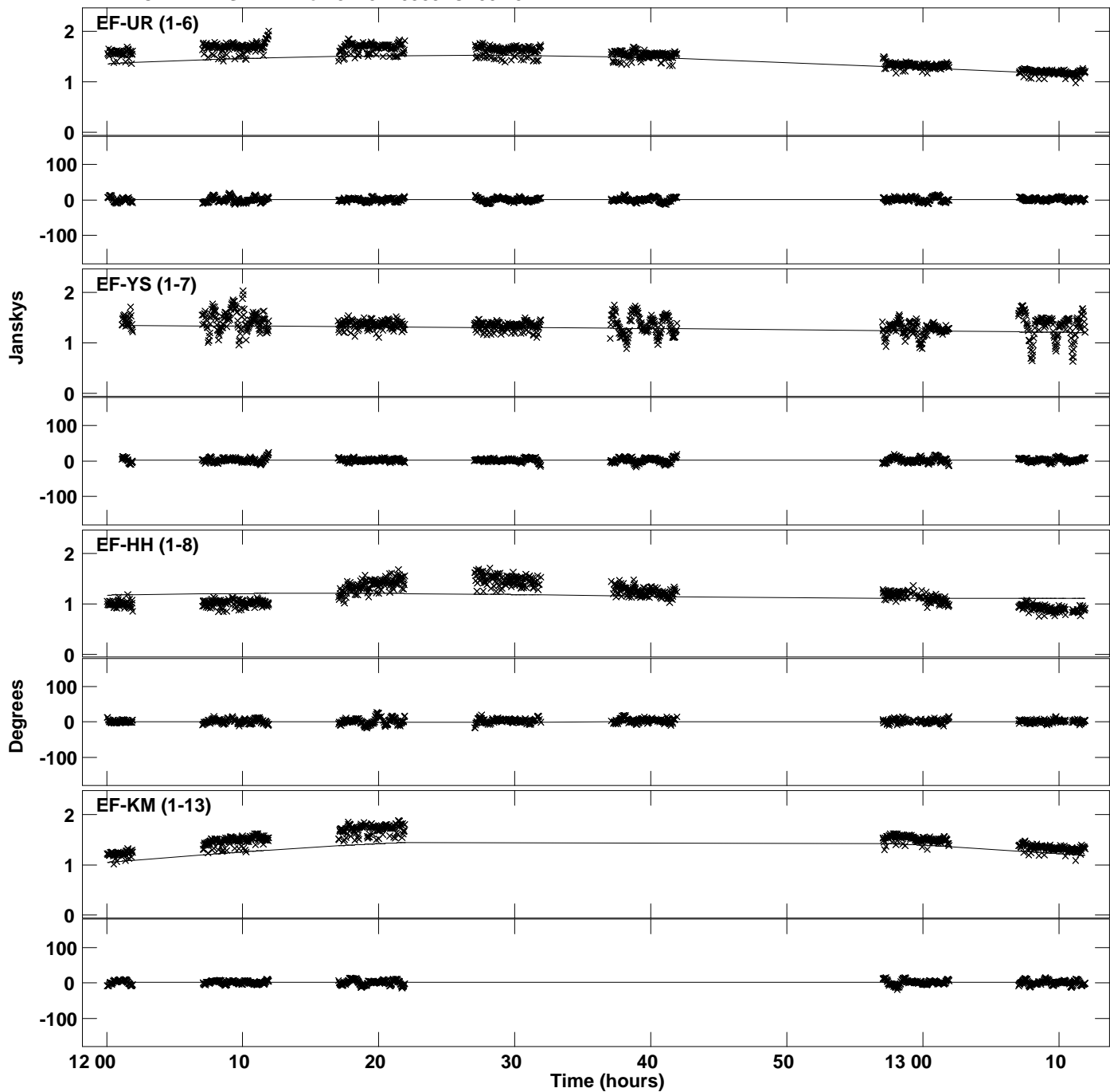
PLot file version 33 created 31-JAN-2020 16:35:41
Amplitude andPhase vs Time for J1751+0939.MULTI.1 CL # 3
IF 11 CHAN 1 STK RR of J1751+0939.ICL001.3



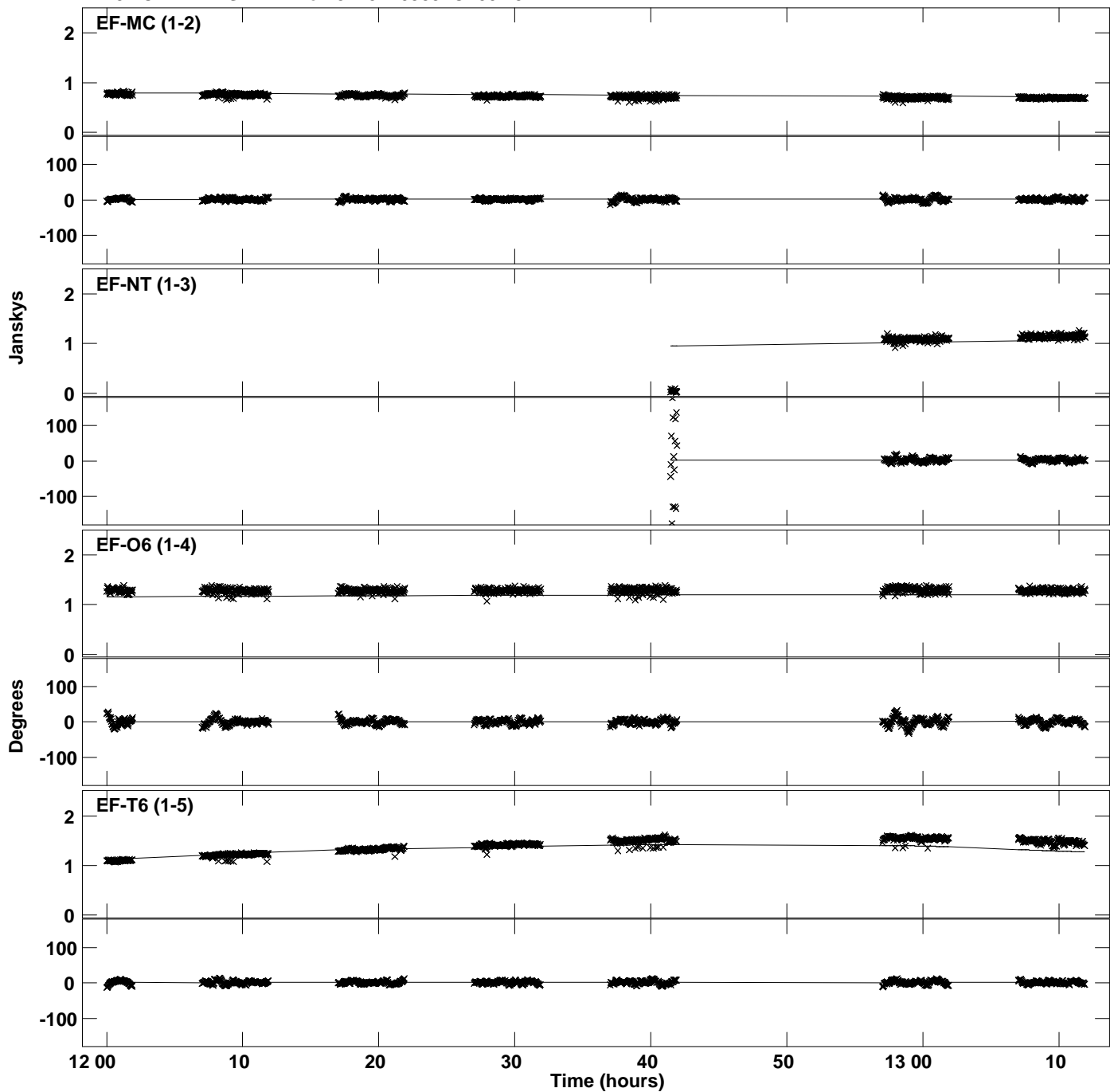
Plot file version 34 created 31-JAN-2020 16:35:42
Amplitude and Phase vs Time for J1751+0939.MULTI.1 CL # 3
IF 12 CHAN 1 STK RR of J1751+0939.ICL001.3



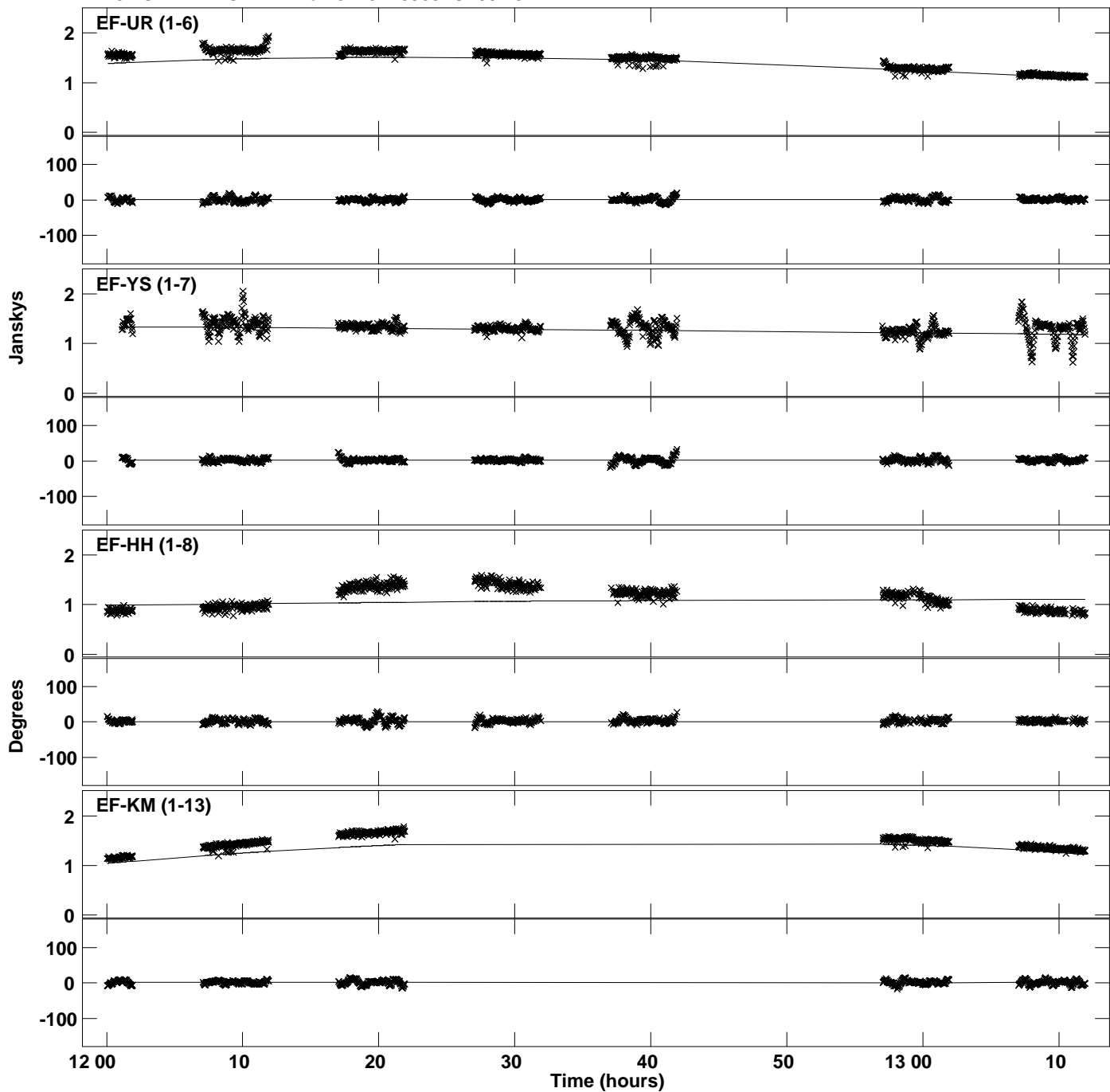
PLot file version 35 created 31-JAN-2020 16:35:42
Amplitude andPhase vs Time for J1751+0939.MULTI.1 CL # 3
IF 12 CHAN 1 STK RR of J1751+0939.ICL001.3



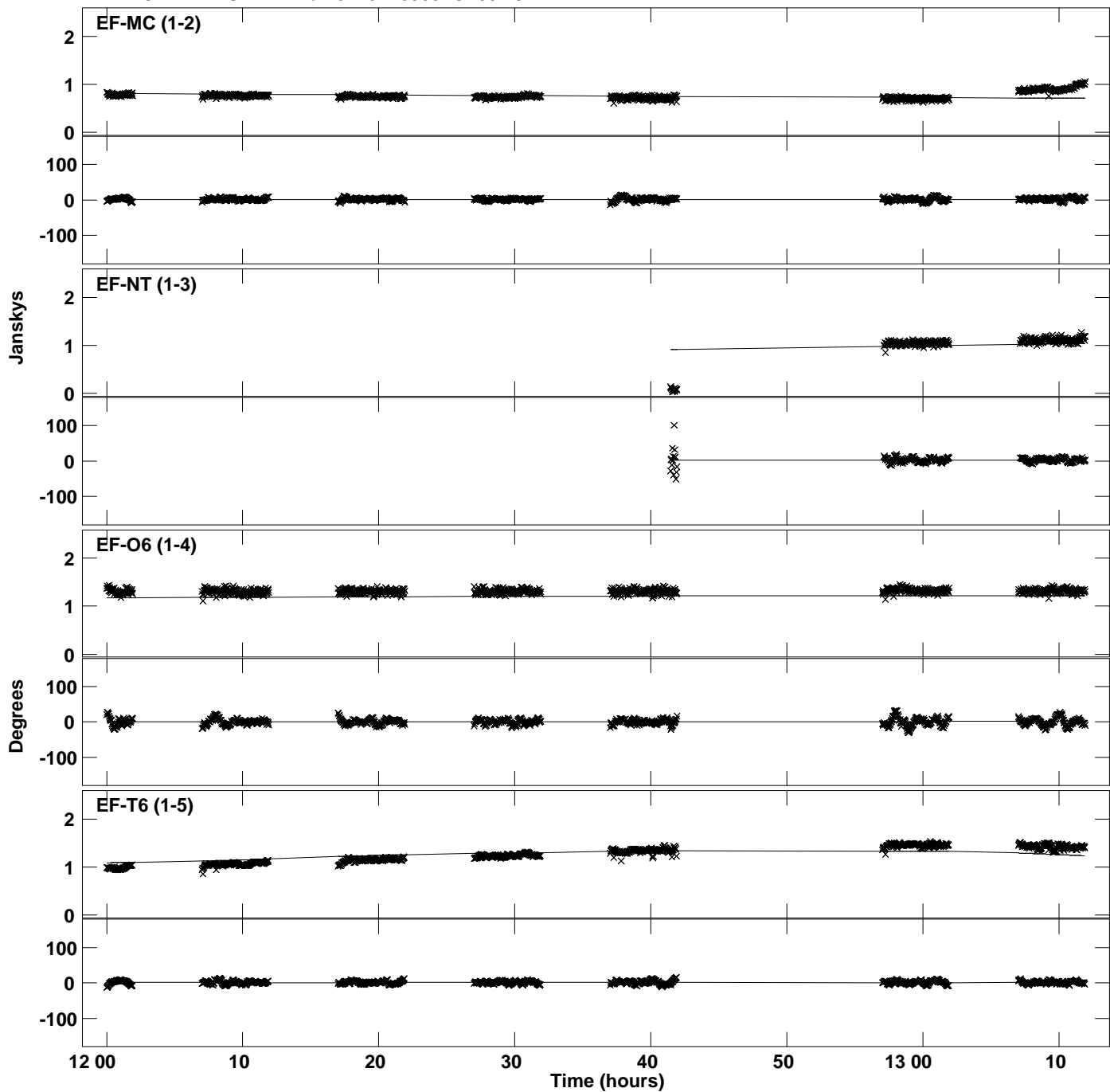
Plot file version 36 created 31-JAN-2020 16:35:44
Amplitude and Phase vs Time for J1751+0939.MULTI.1 CL # 3
IF 13 CHAN 1 STK RR of J1751+0939.ICL001.3



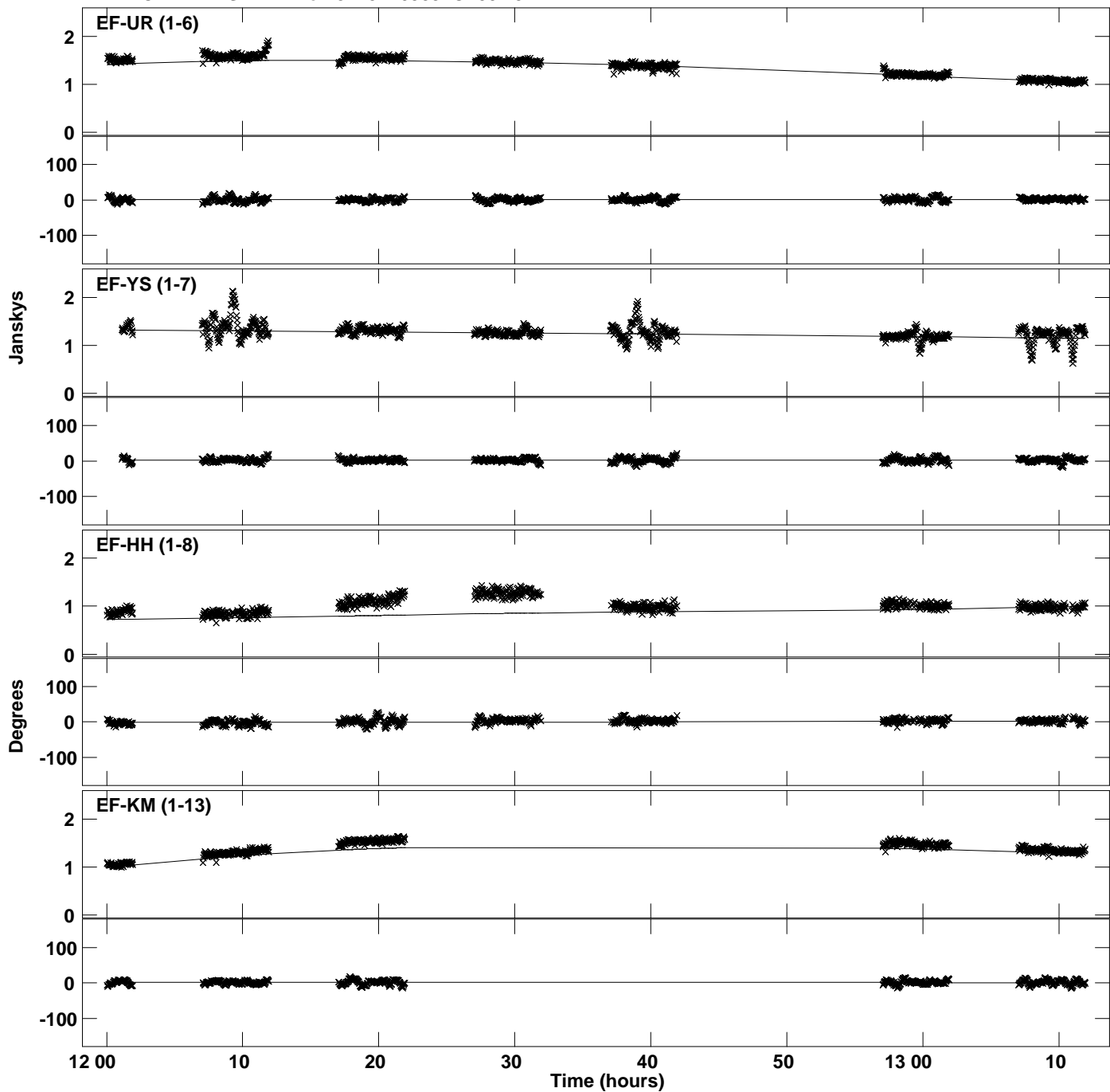
PLot file version 37 created 31-JAN-2020 16:35:44
Amplitude andPhase vs Time for J1751+0939.MULTI.1 CL # 3
IF 13 CHAN 1 STK RR of J1751+0939.ICL001.3



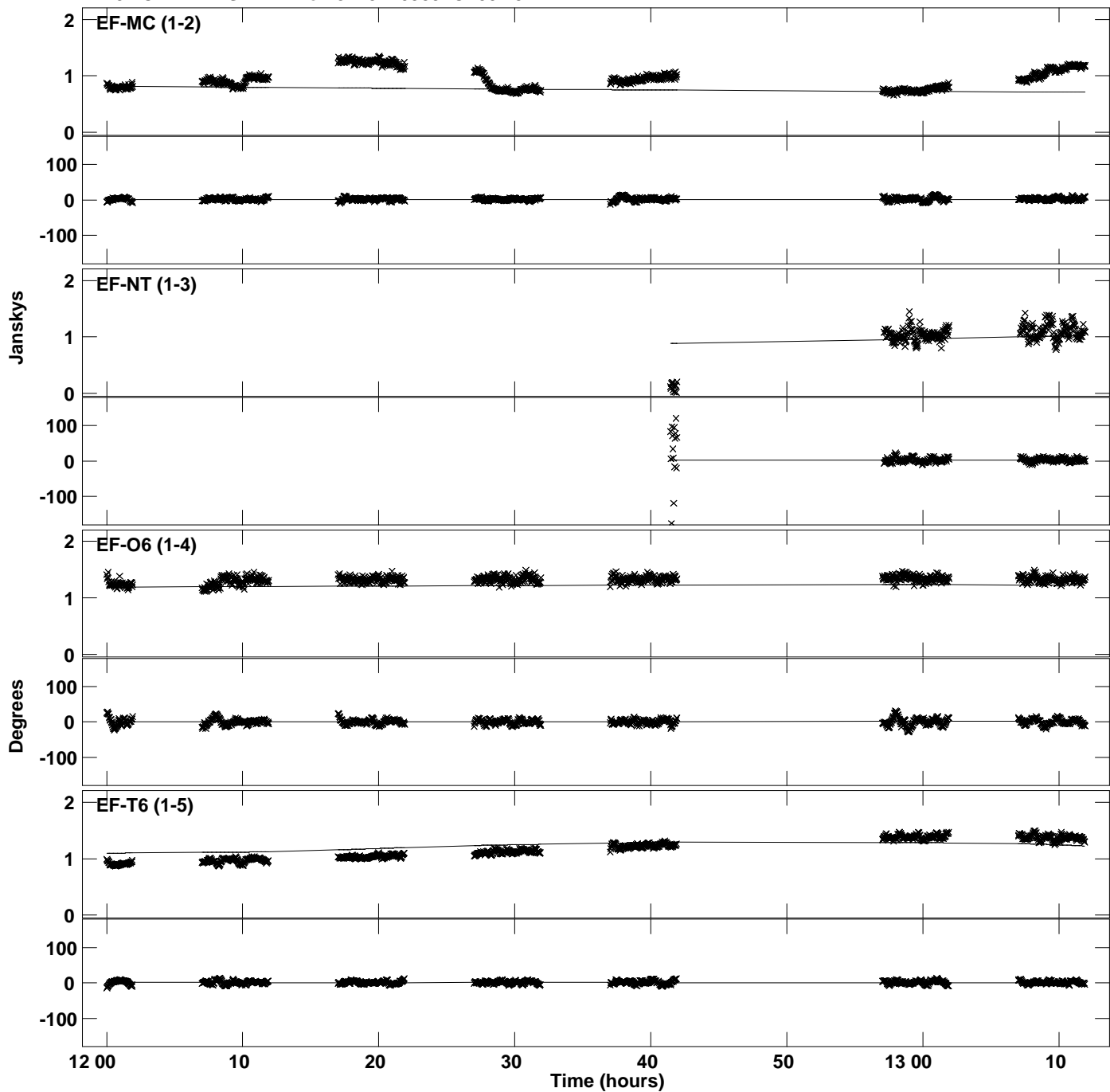
Plot file version 38 created 31-JAN-2020 16:35:45
Amplitude and Phase vs Time for J1751+0939.MULTI.1 CL # 3
IF 14 CHAN 1 STK RR of J1751+0939.ICL001.3



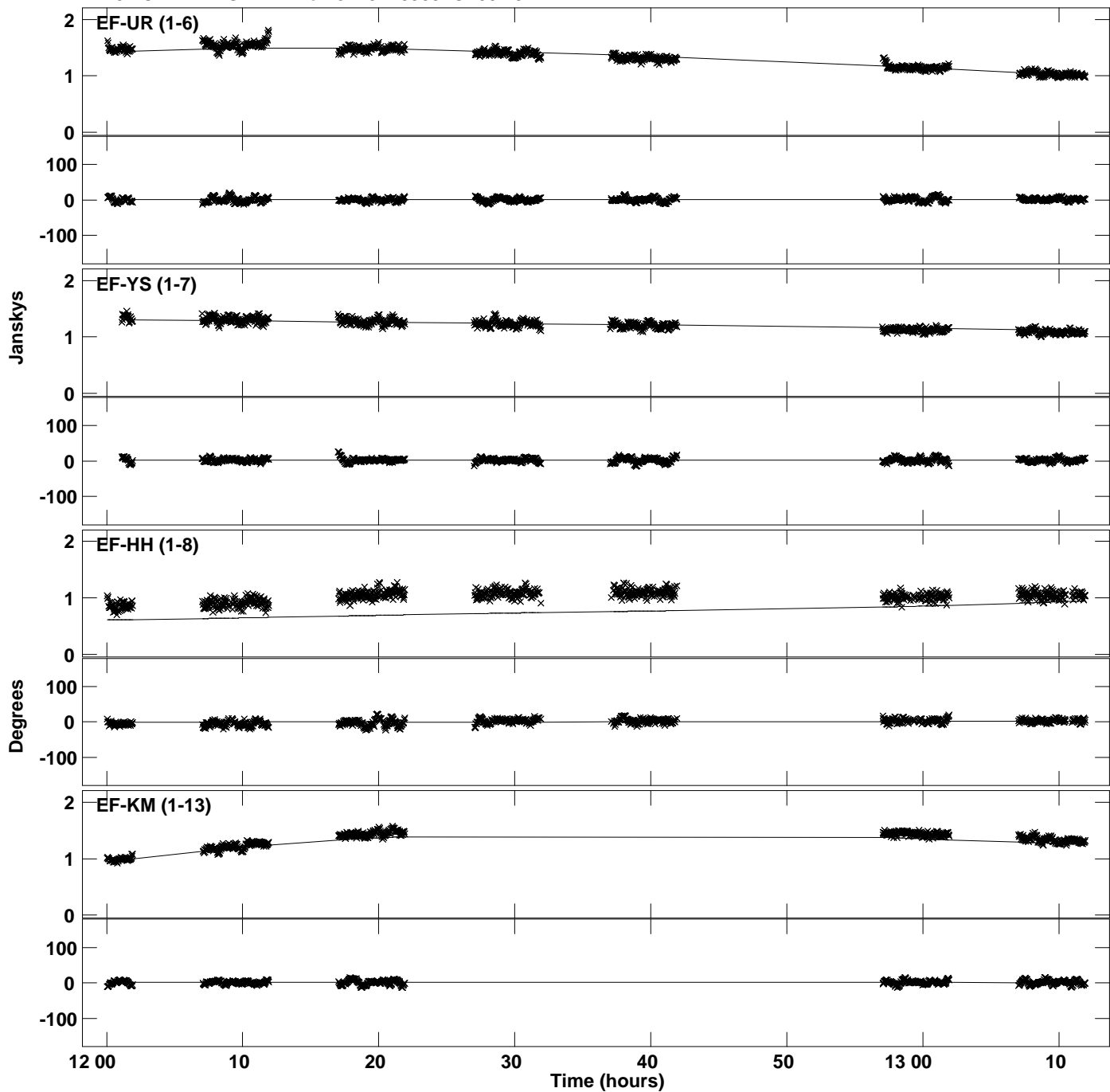
PLot file version 39 created 31-JAN-2020 16:35:45
Amplitude andPhase vs Time for J1751+0939.MULTI.1 CL # 3
IF 14 CHAN 1 STK RR of J1751+0939.ICL001.3



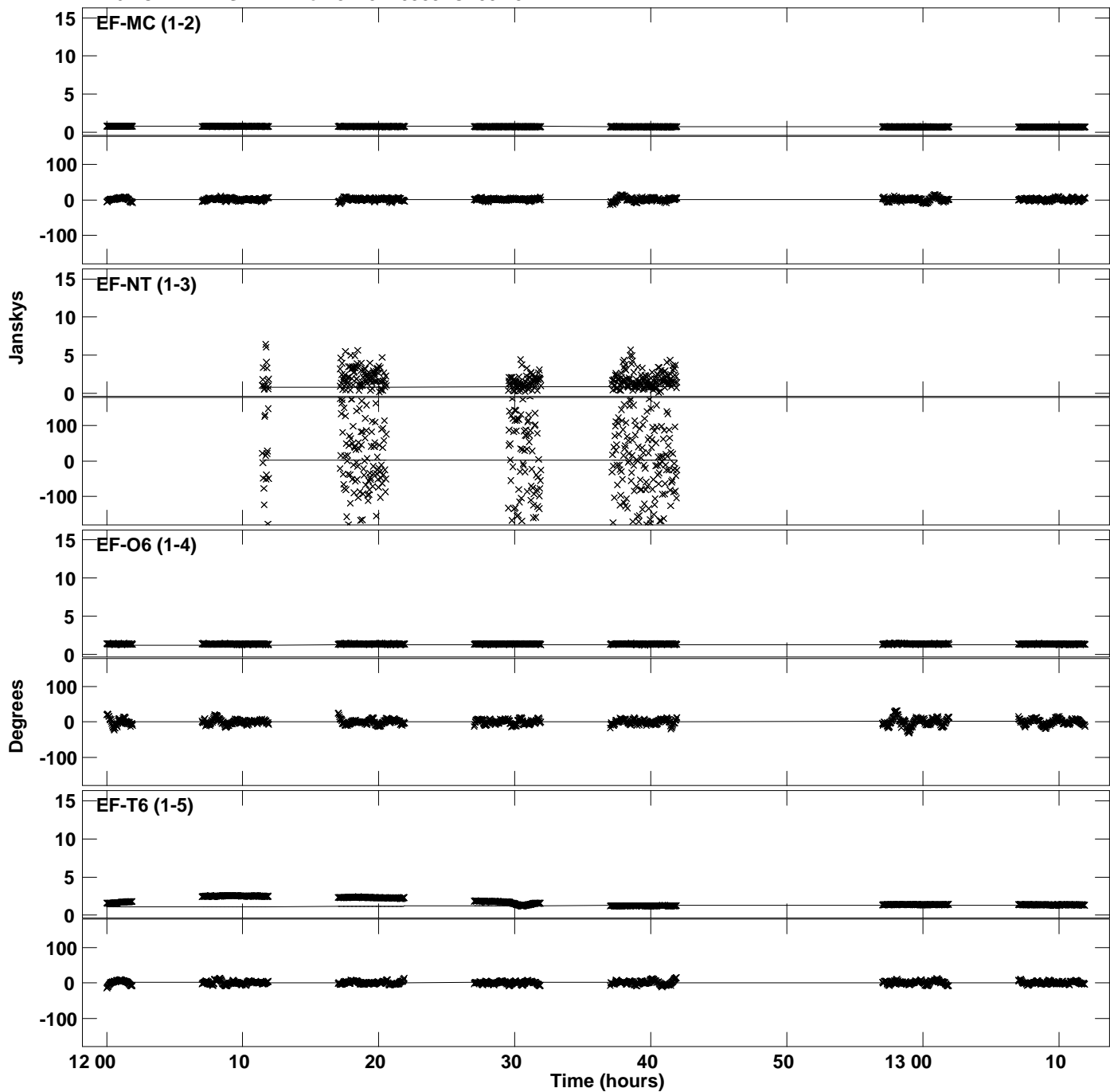
Plot file version 40 created 31-JAN-2020 16:35:47
Amplitude and Phase vs Time for J1751+0939.MULTI.1 CL # 3
IF 15 CHAN 1 STK RR of J1751+0939.ICL001.3



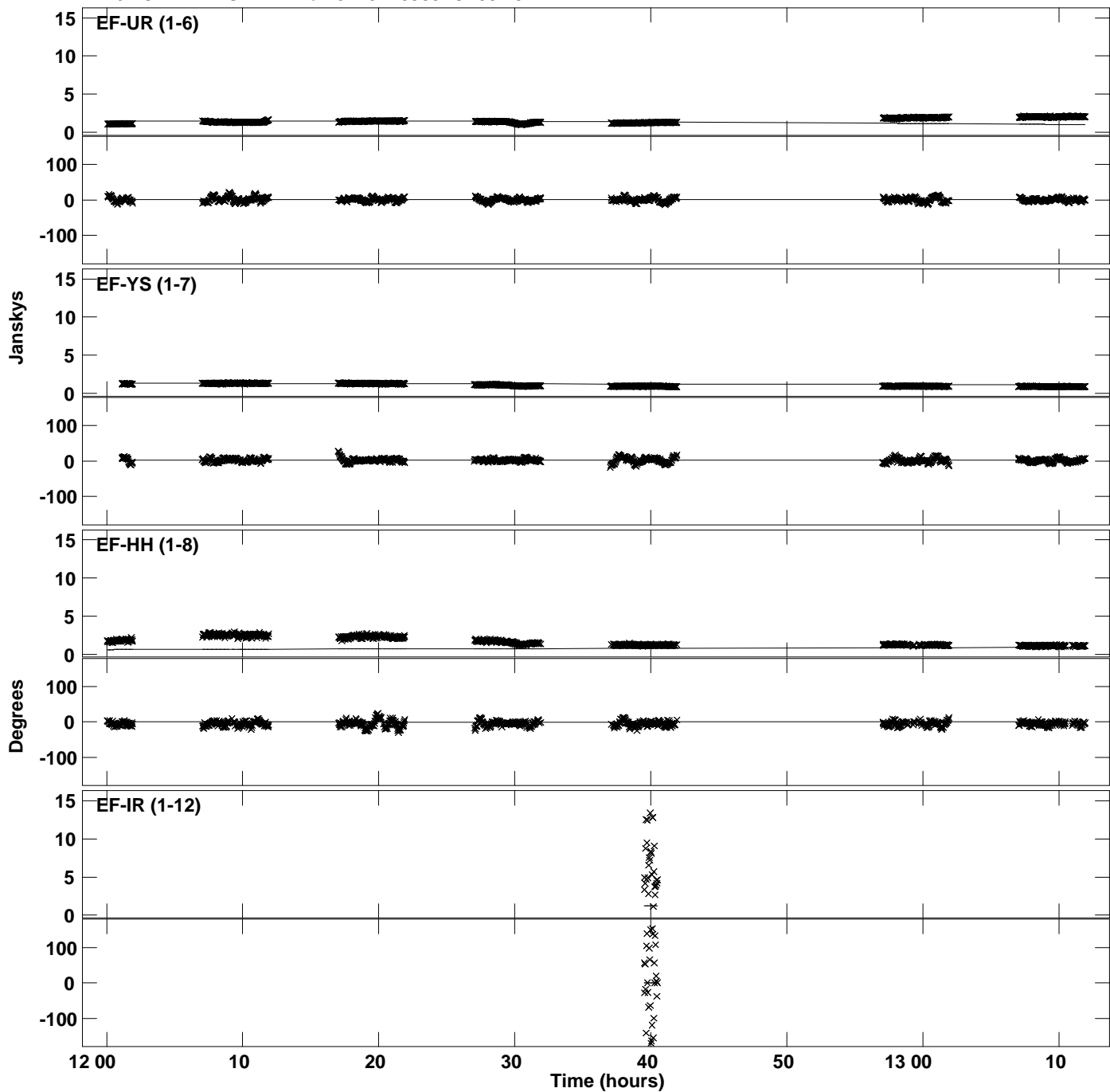
PLot file version 41 created 31-JAN-2020 16:35:47
Amplitude andPhase vs Time for J1751+0939.MULTI.1 CL # 3
IF 15 CHAN 1 STK RR of J1751+0939.ICL001.3



Plot file version 42 created 31-JAN-2020 16:35:48
Amplitude and Phase vs Time for J1751+0939.MULTI.1 CL # 3
IF 16 CHAN 1 STK RR of J1751+0939.ICL001.3



Plot file version 43 created 31-JAN-2020 16:35:48
Amplitude and Phase vs Time for J1751+0939.MULTI.1 CL # 3
IF 16 CHAN 1 STK RR of J1751+0939.ICL001.3



PLot file version 44 created 31-JAN-2020 16:35:48
Amplitude andPhase vs Time for J1751+0939.MULTI.1 CL # 3
IF 16 CHAN 1 STK RR of J1751+0939.ICL001.3

