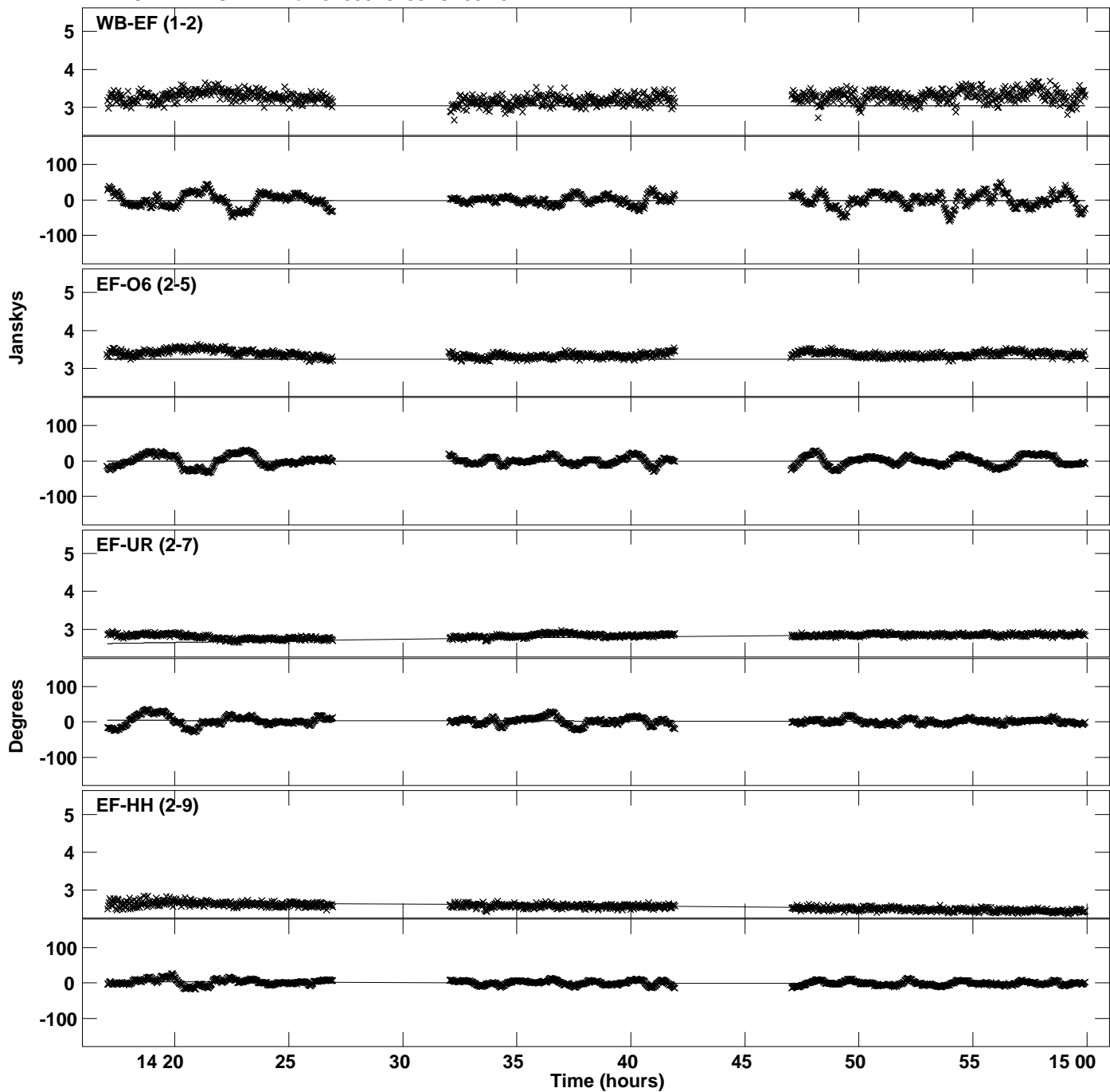
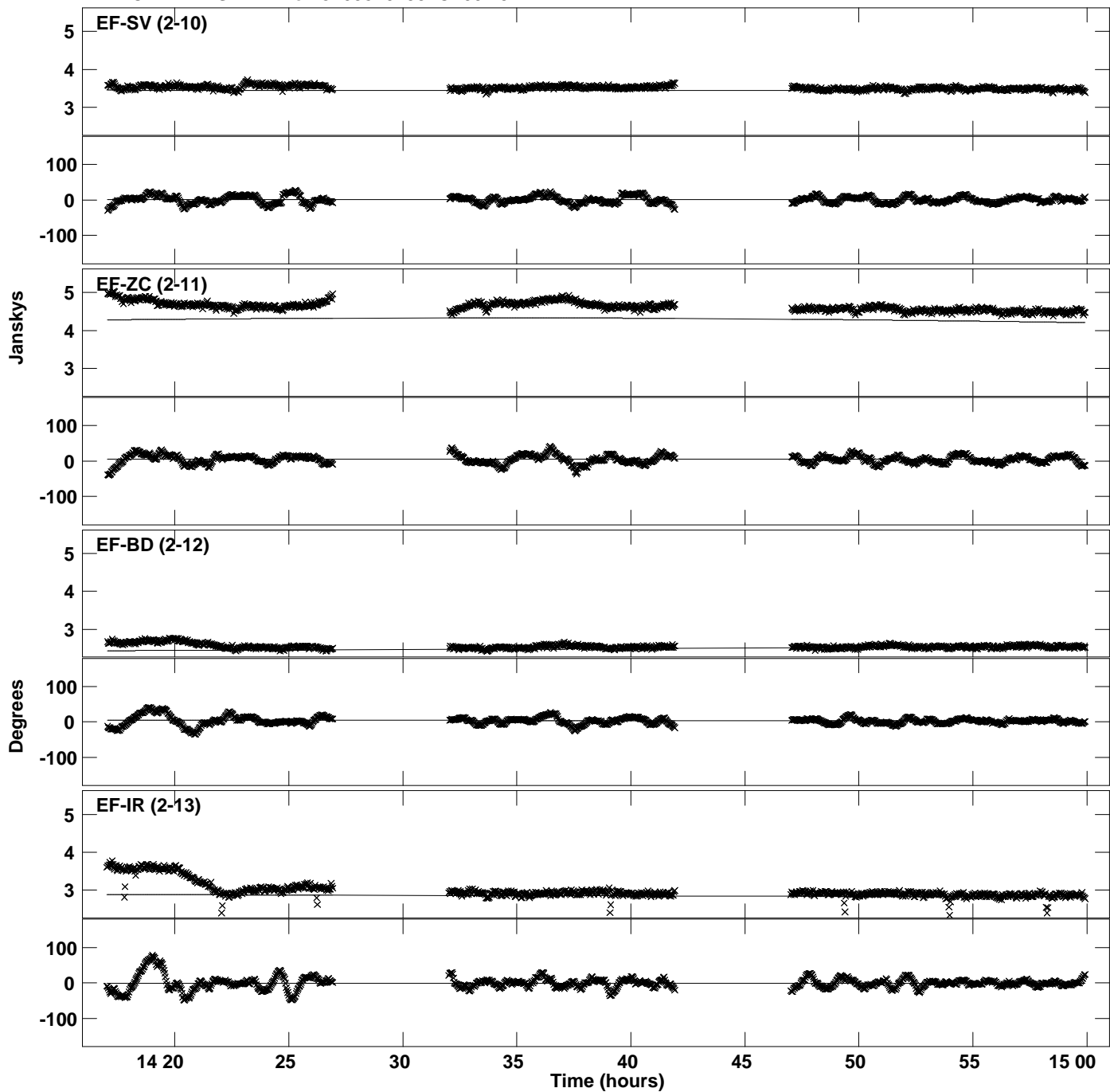


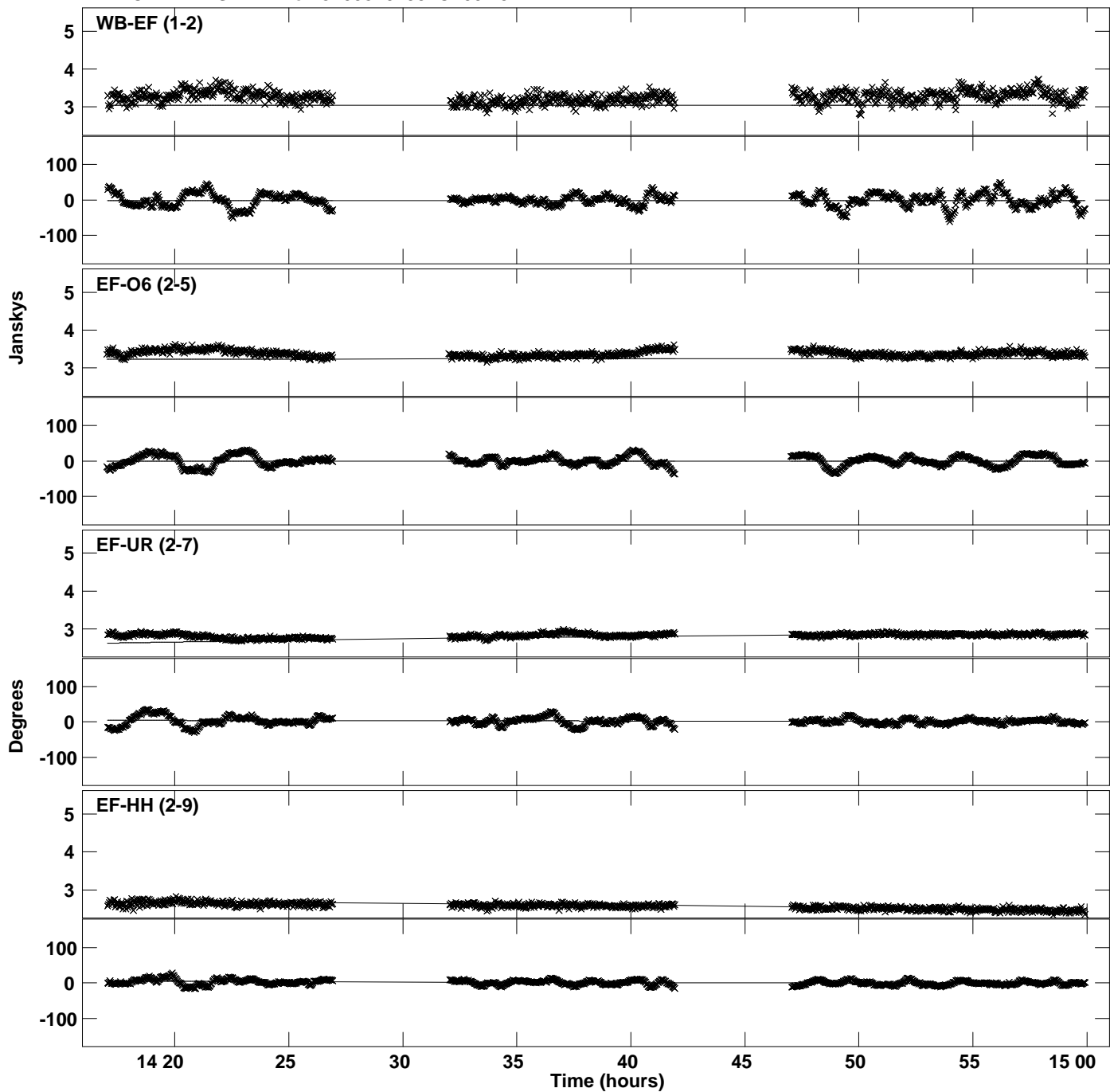
Plot file version 1 created 21-JUL-2020 15:28:05
Amplitude and Phase vs Time for J1058+0133.MULTI.1 CL # 3
IF 1 CHAN 1 STK LL of J1058+0133.ICL001.3



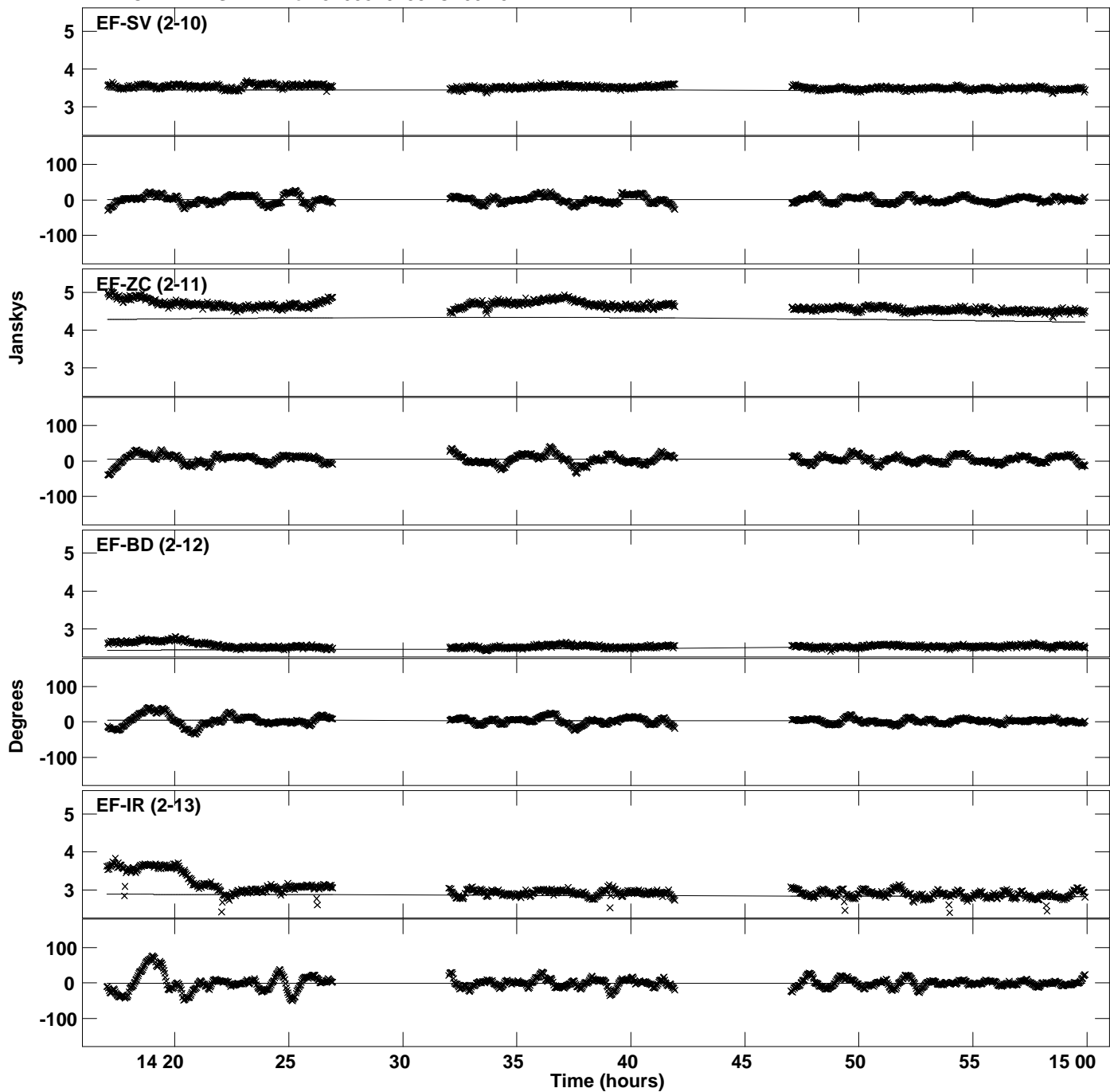
Plot file version 2 created 21-JUL-2020 15:28:05
Amplitude and Phase vs Time for J1058+0133.MULTI.1 CL # 3
IF 1 CHAN 1 STK LL of J1058+0133.ICL001.3



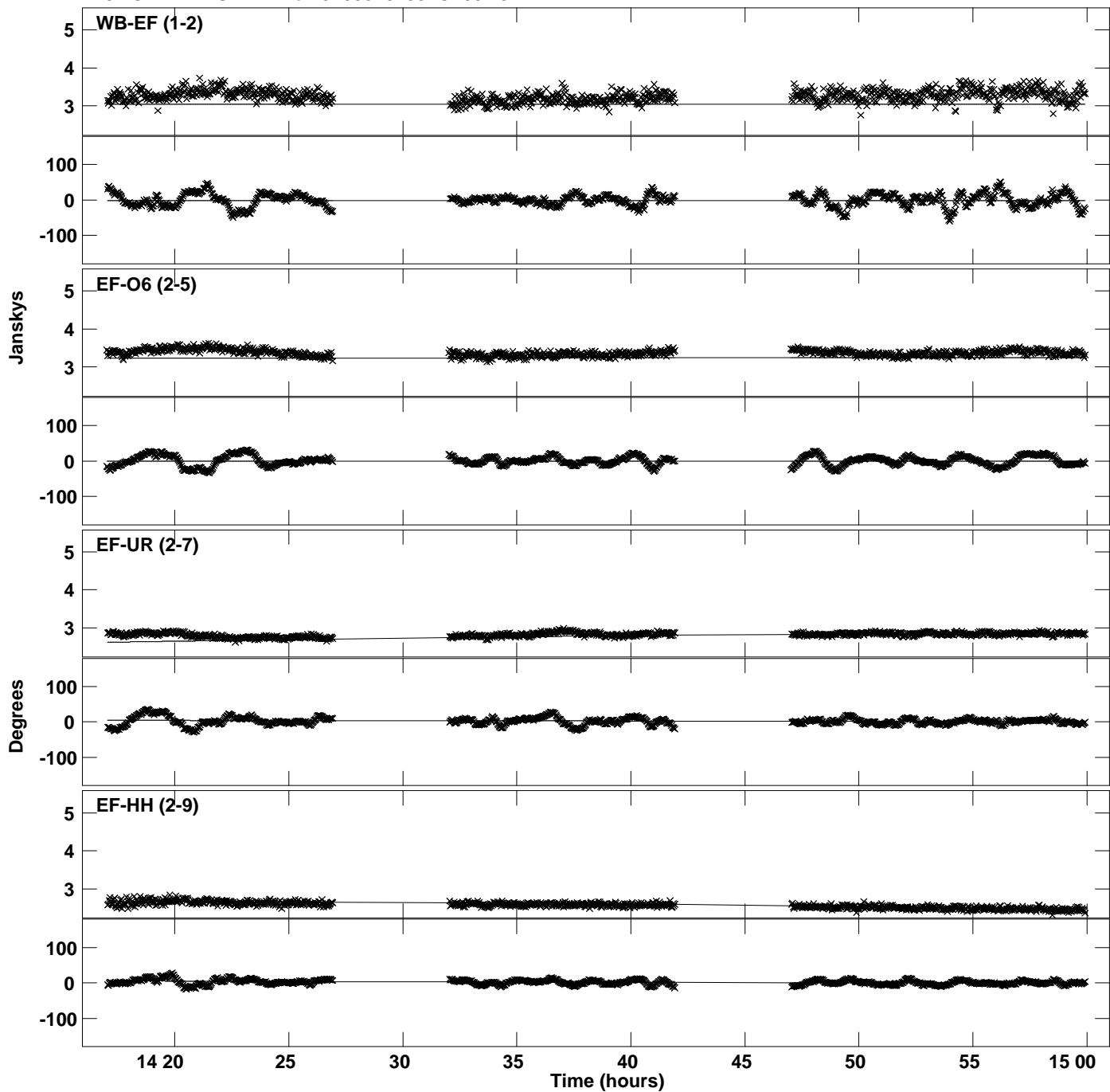
Plot file version 3 created 21-JUL-2020 15:28:05
Amplitude and Phase vs Time for J1058+0133.MULTI.1 CL # 3
IF 2 CHAN 1 STK LL of J1058+0133.ICL001.3



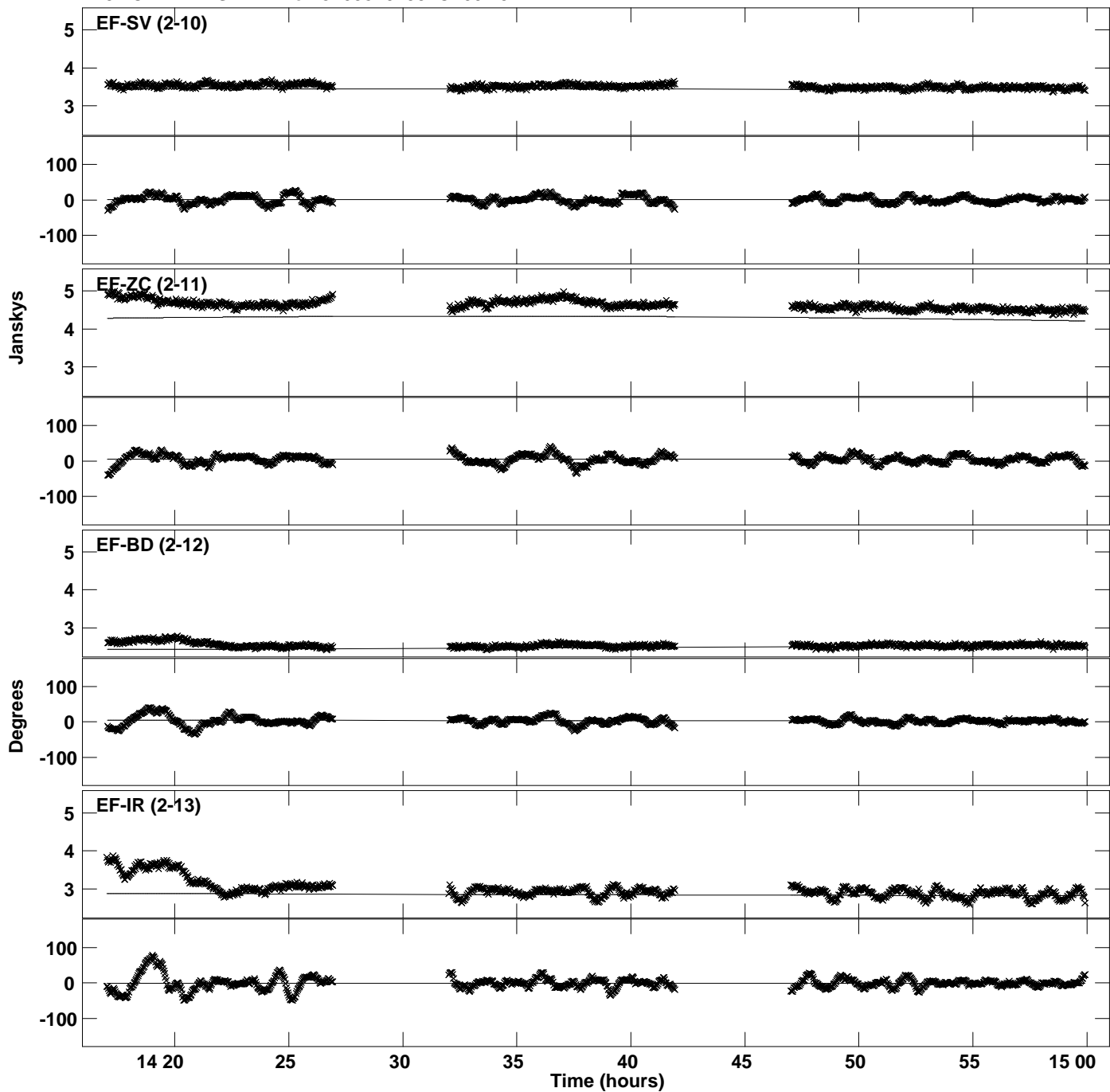
Plot file version 4 created 21-JUL-2020 15:28:05
Amplitude and Phase vs Time for J1058+0133.MULTI.1 CL # 3
IF 2 CHAN 1 STK LL of J1058+0133.ICL001.3



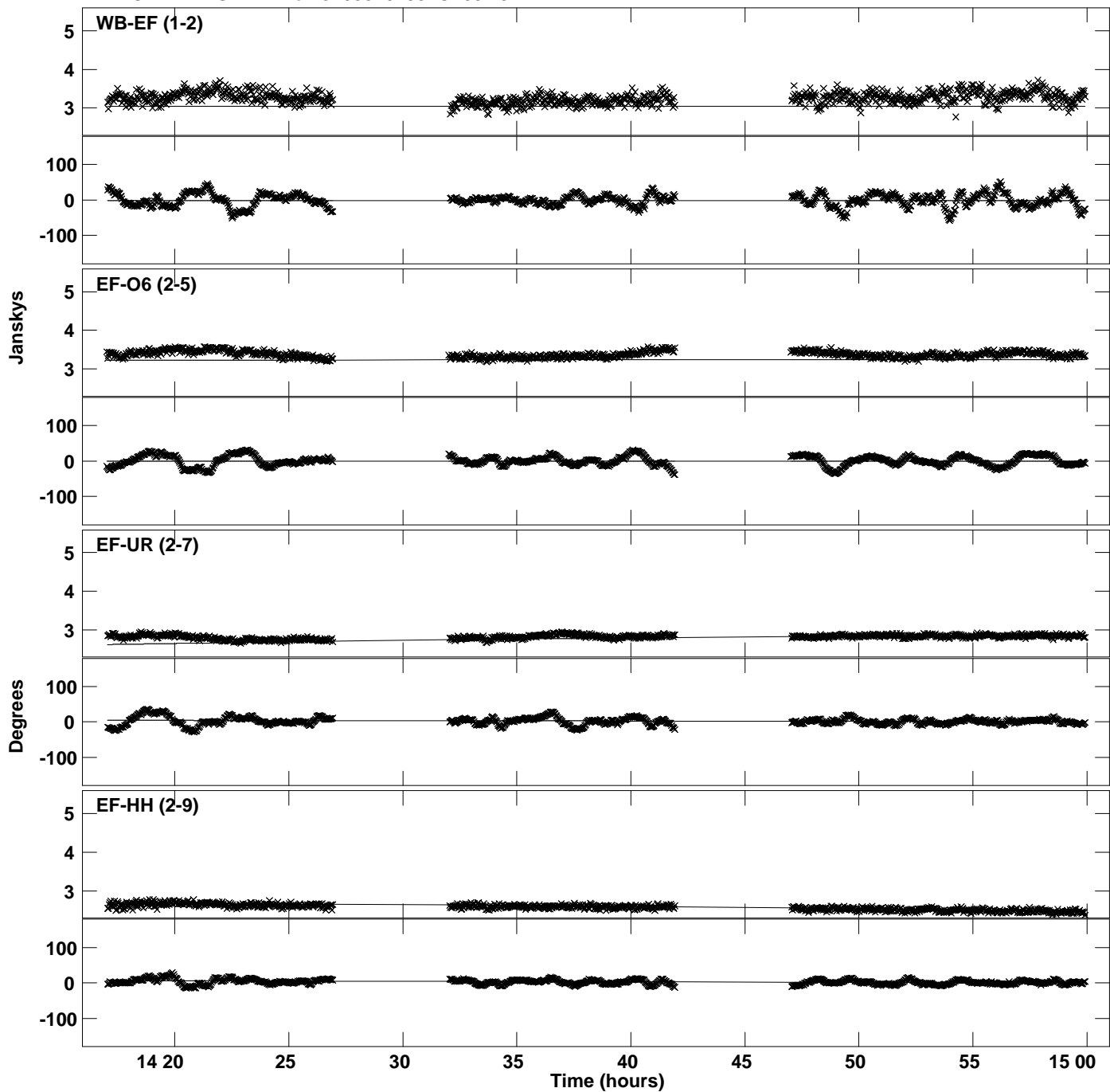
Plot file version 5 created 21-JUL-2020 15:28:06
Amplitude and Phase vs Time for J1058+0133.MULTI.1 CL # 3
IF 3 CHAN 1 STK LL of J1058+0133.ICL001.3



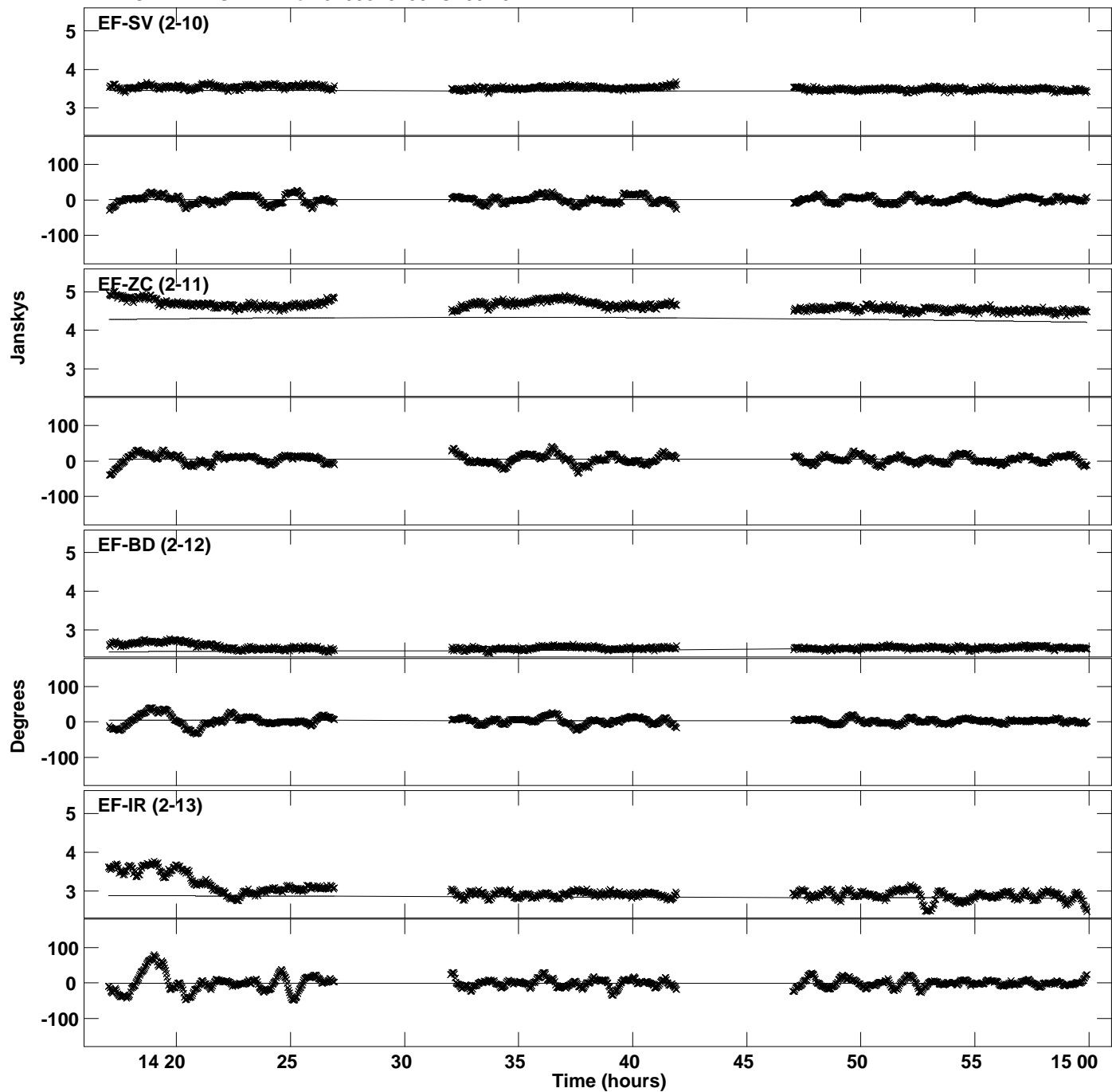
PLot file version 6 created 21-JUL-2020 15:28:06
Amplitude and Phase vs Time for J1058+0133.MULTI.1 CL # 3
IF 3 CHAN 1 STK LL of J1058+0133.ICL001.3



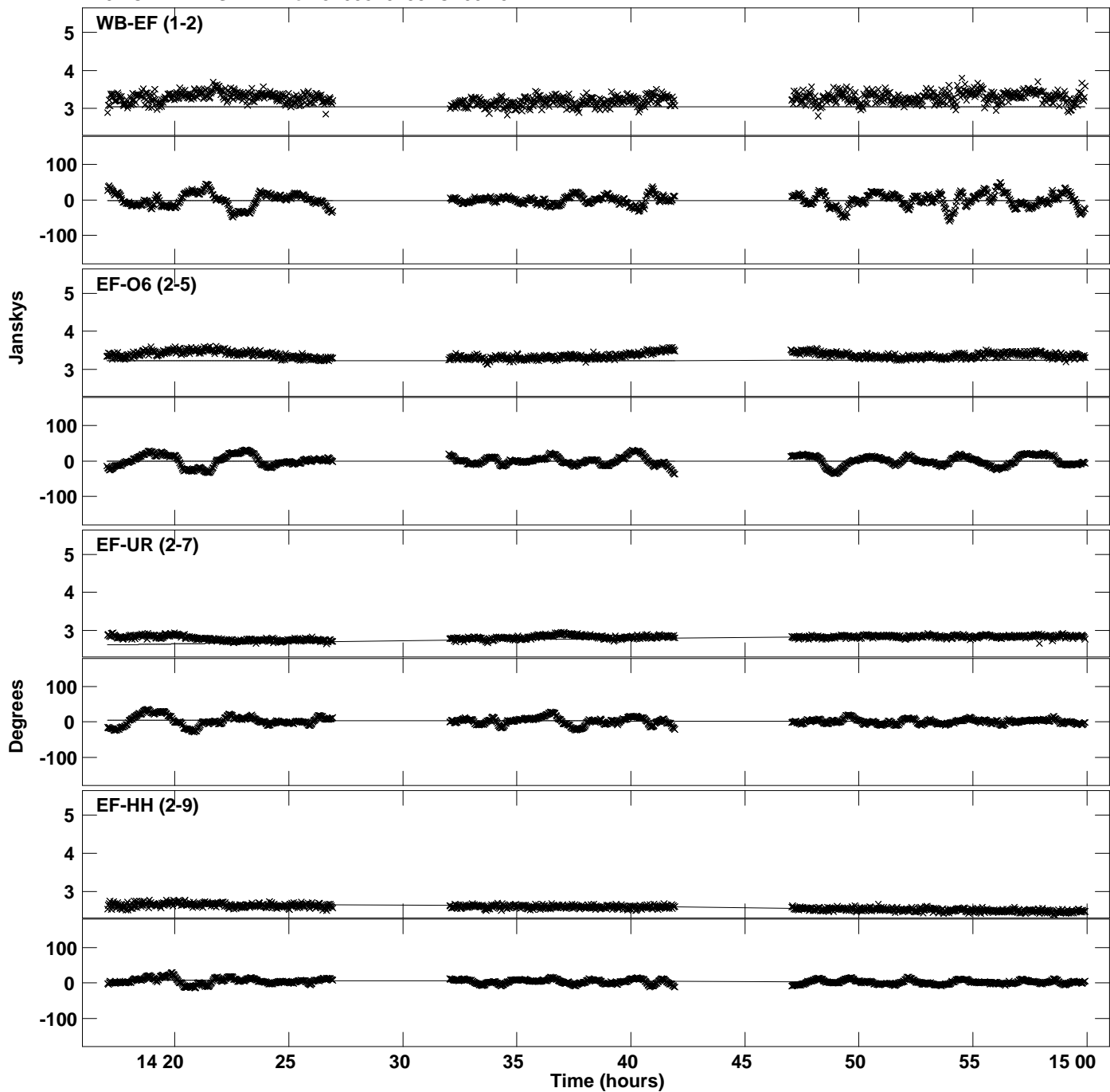
PLot file version 7 created 21-JUL-2020 15:28:06
Amplitude andPhase vs Time for J1058+0133.MULTI.1 CL # 3
IF 4 CHAN 1 STK LL of J1058+0133.ICL001.3



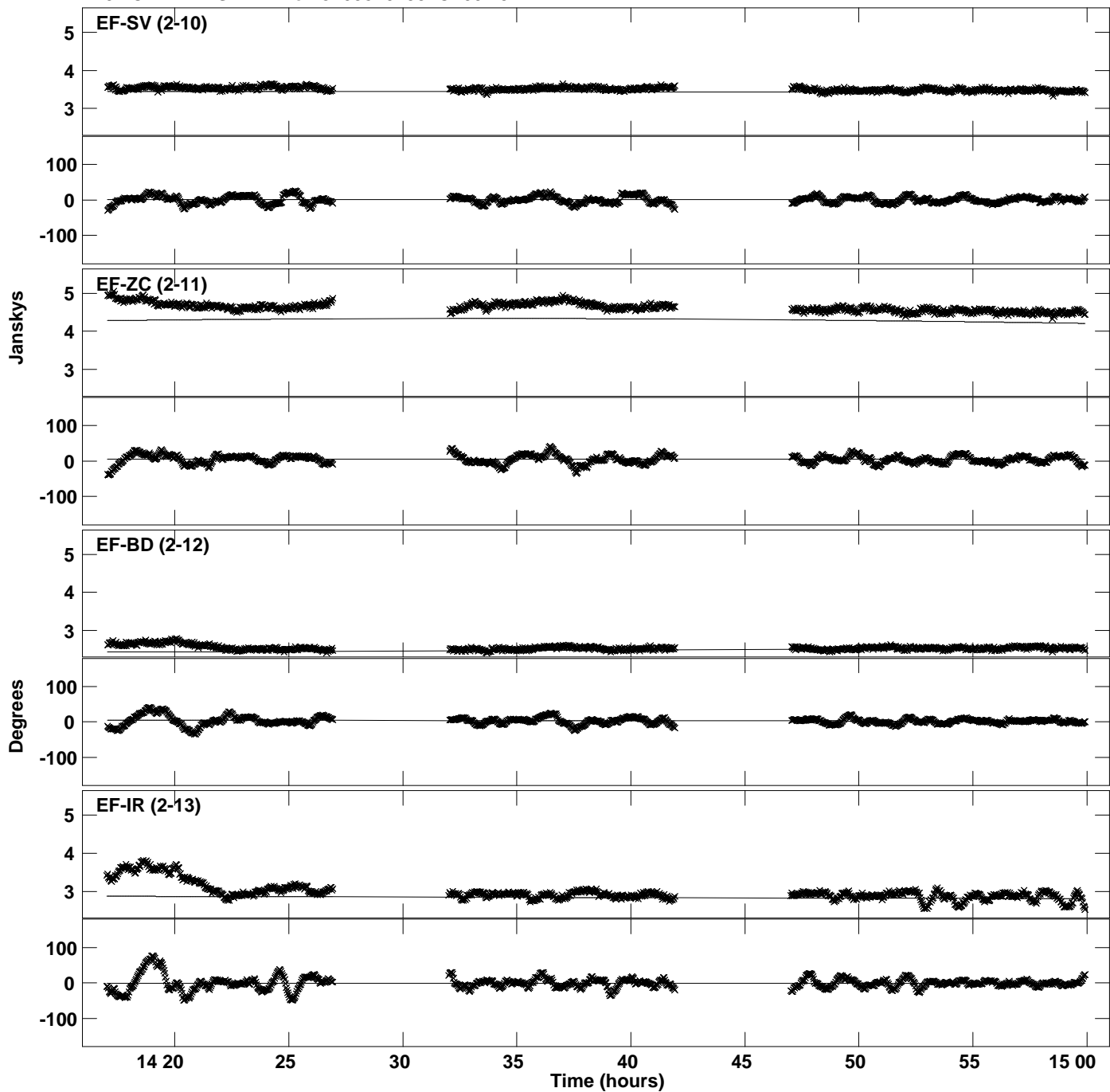
Plot file version 8 created 21-JUL-2020 15:28:06
Amplitude and Phase vs Time for J1058+0133.MULTI.1 CL # 3
IF 4 CHAN 1 STK LL of J1058+0133.ICL001.3



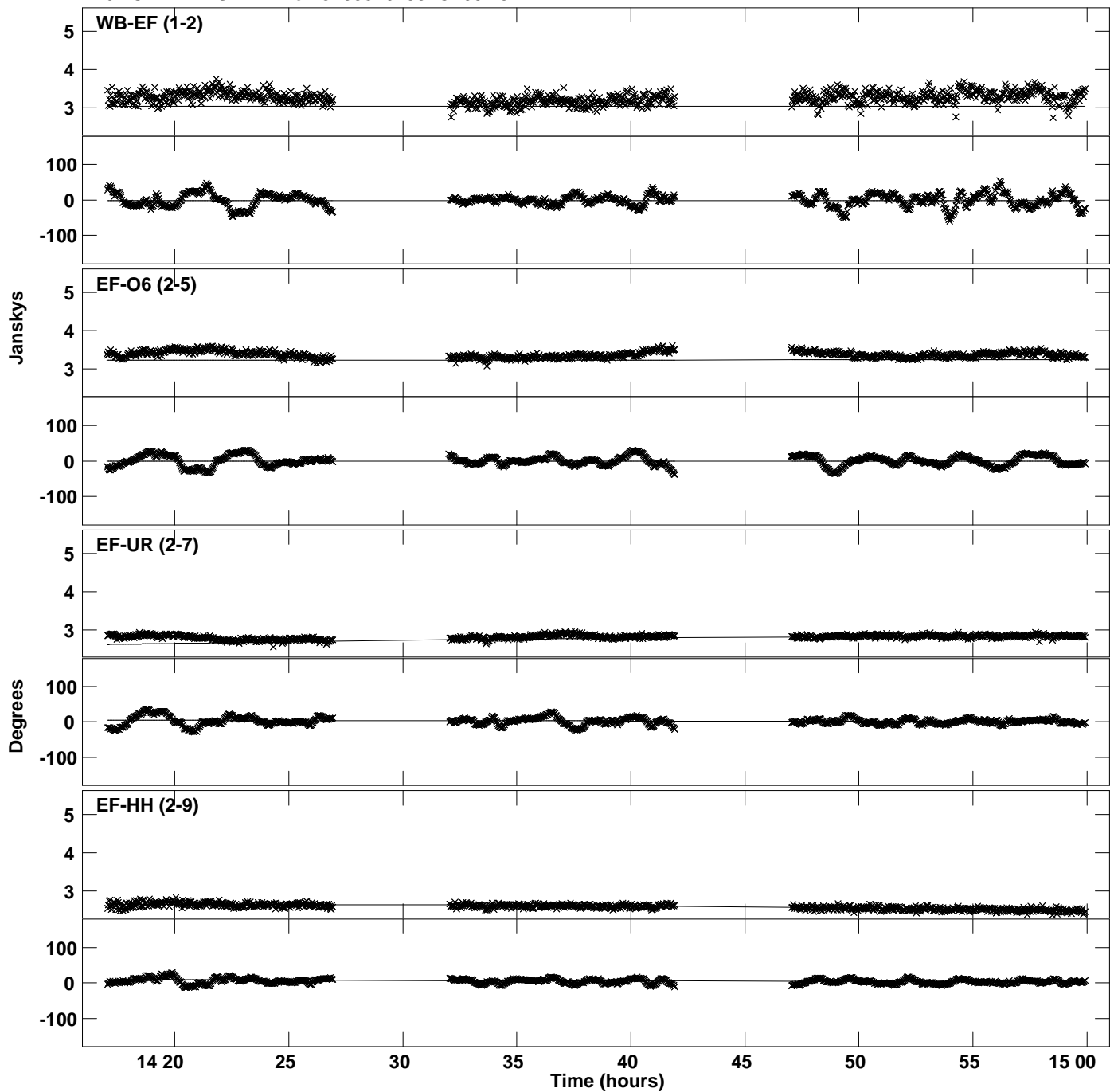
Plot file version 9 created 21-JUL-2020 15:28:07
Amplitude and Phase vs Time for J1058+0133.MULTI.1 CL # 3
IF 5 CHAN 1 STK LL of J1058+0133.ICL001.3



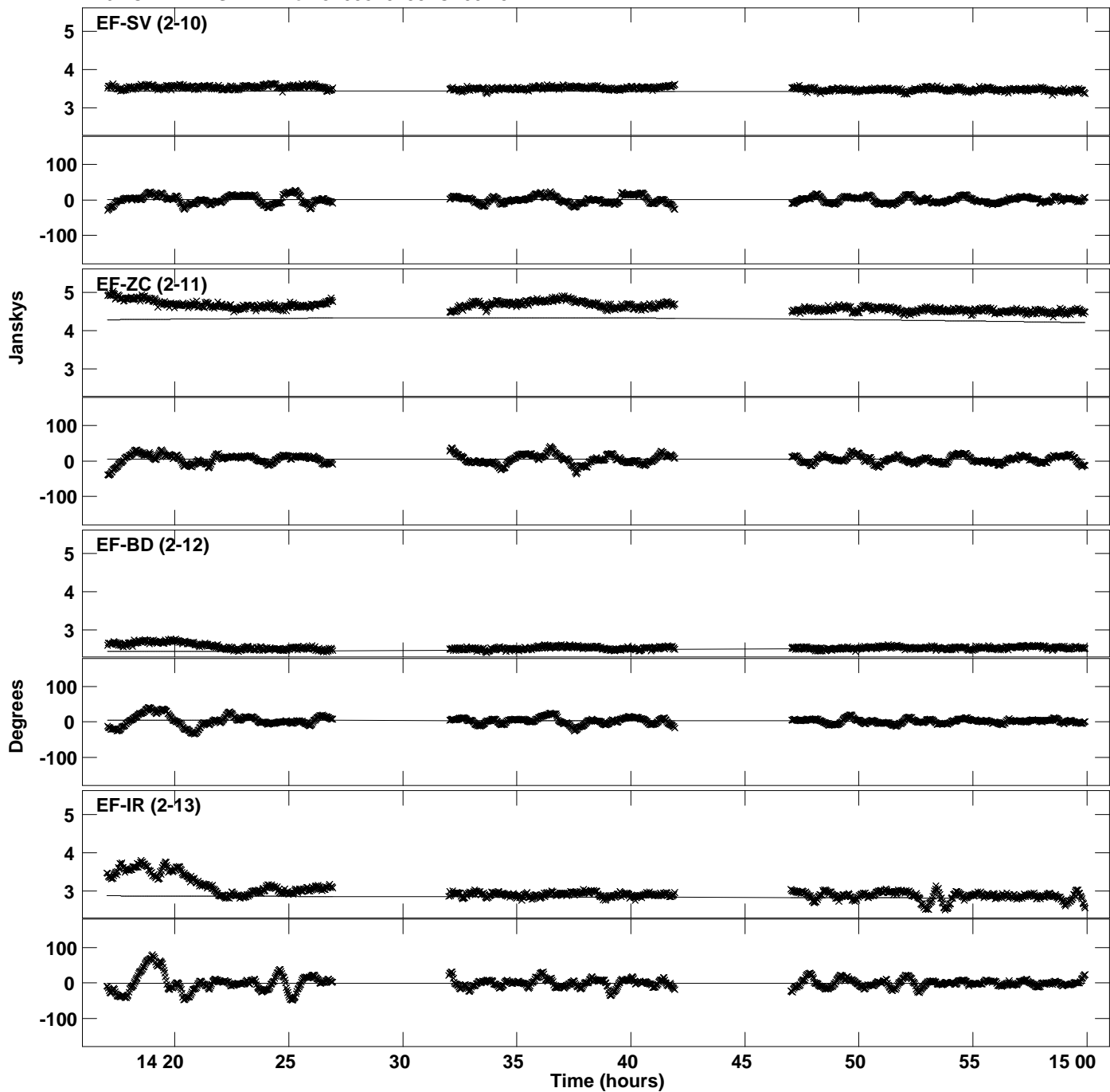
PLot file version 10 created 21-JUL-2020 15:28:07
Amplitude and Phase vs Time for J1058+0133.MULTI.1 CL # 3
IF 5 CHAN 1 STK LL of J1058+0133.ICL001.3



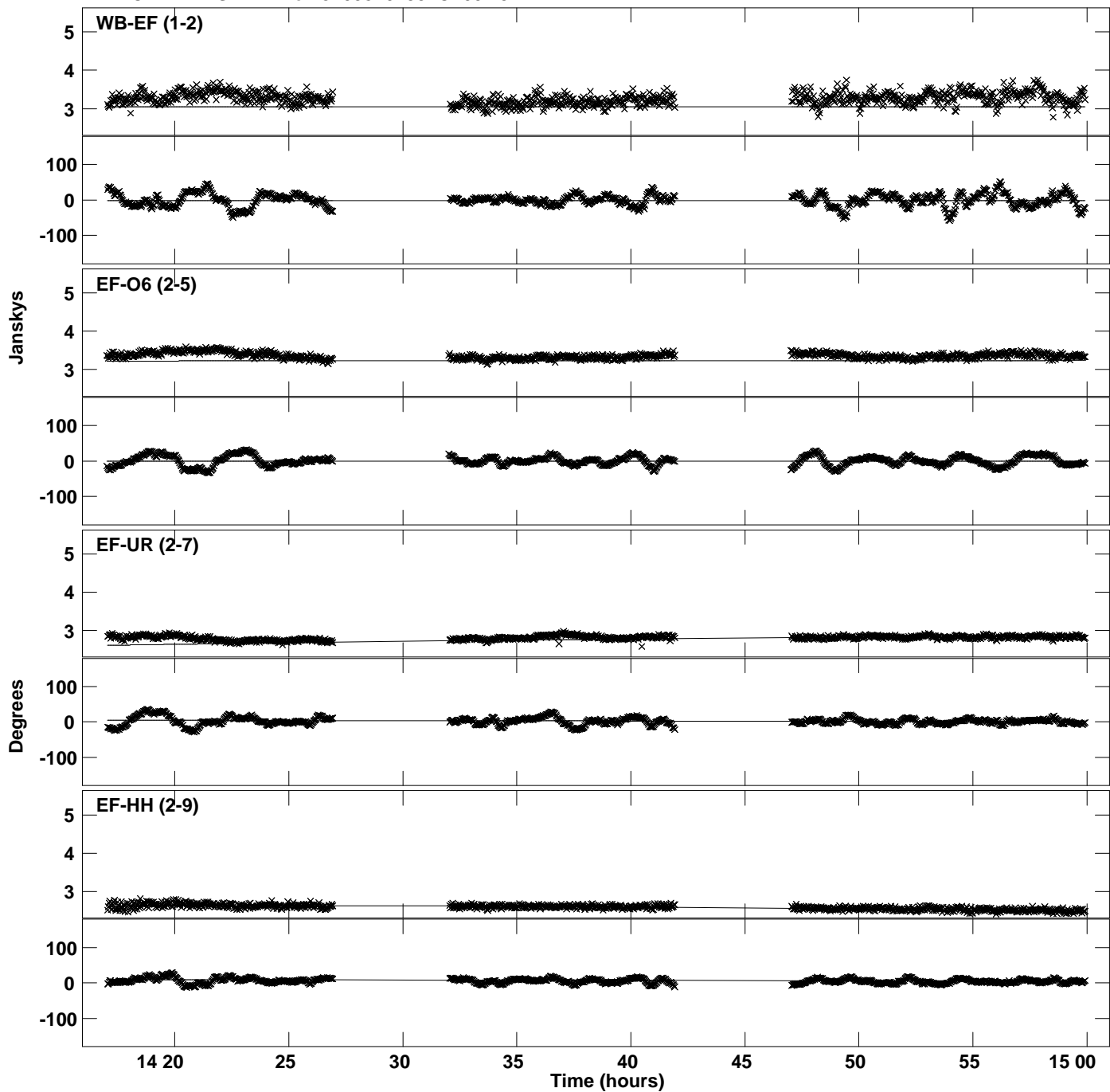
Plot file version 11 created 21-JUL-2020 15:28:07
Amplitude and Phase vs Time for J1058+0133.MULTI.1 CL # 3
IF 6 CHAN 1 STK LL of J1058+0133.ICL001.3



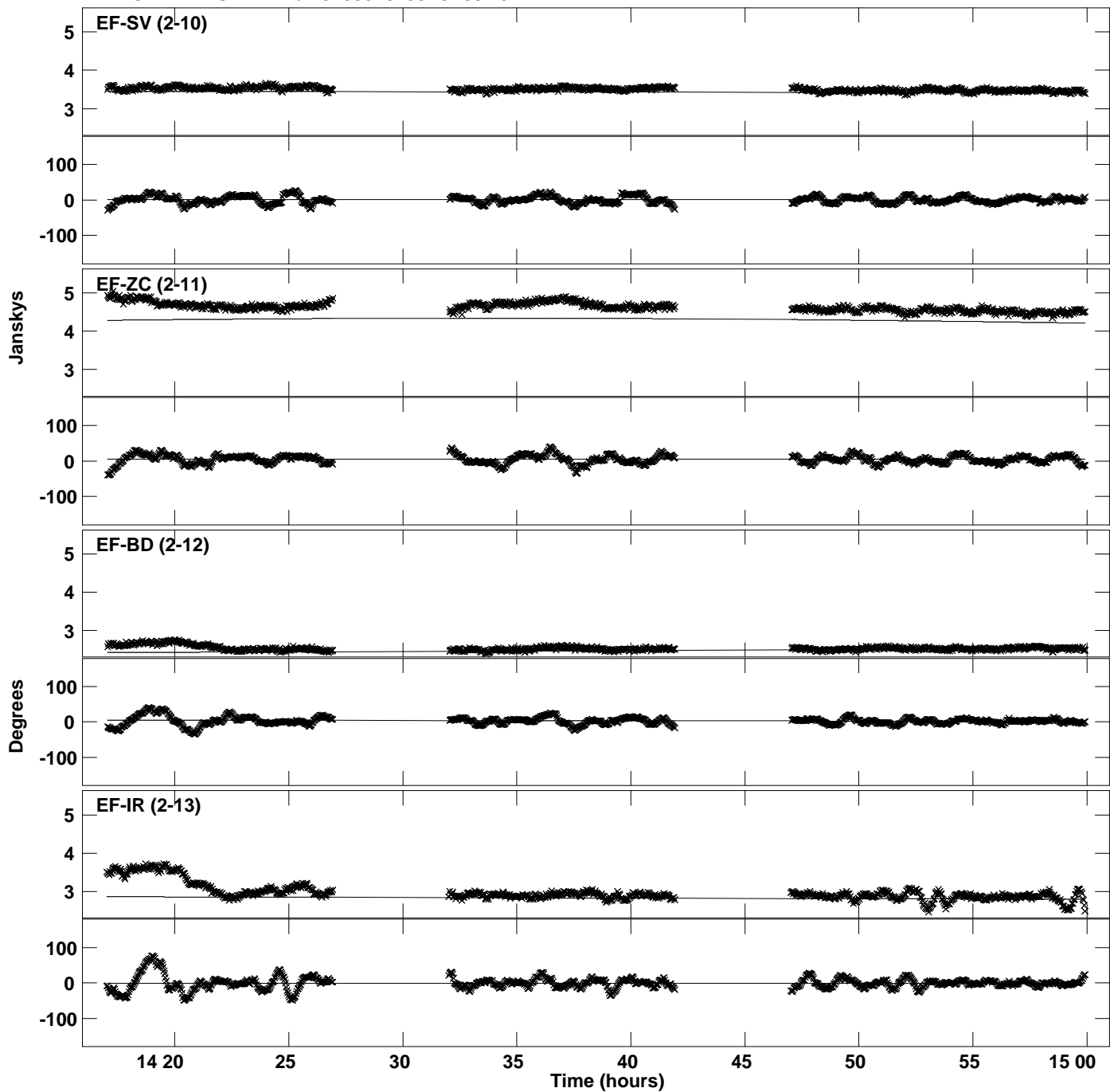
PLot file version 12 created 21-JUL-2020 15:28:07
Amplitude and Phase vs Time for J1058+0133.MULTI.1 CL # 3
IF 6 CHAN 1 STK LL of J1058+0133.ICL001.3



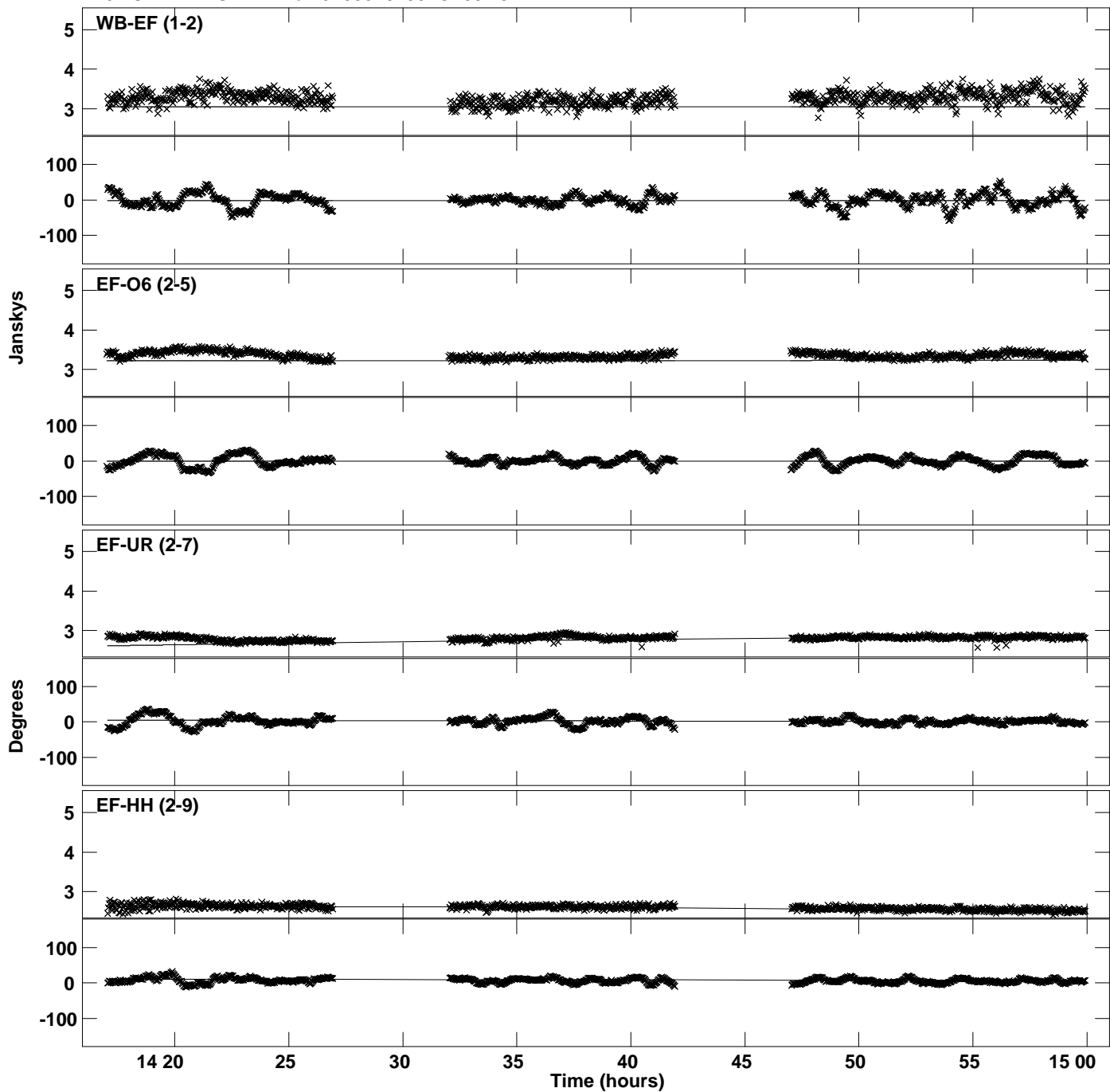
Plot file version 13 created 21-JUL-2020 15:28:08
Amplitude and Phase vs Time for J1058+0133.MULTI.1 CL # 3
IF 7 CHAN 1 STK LL of J1058+0133.ICL001.3



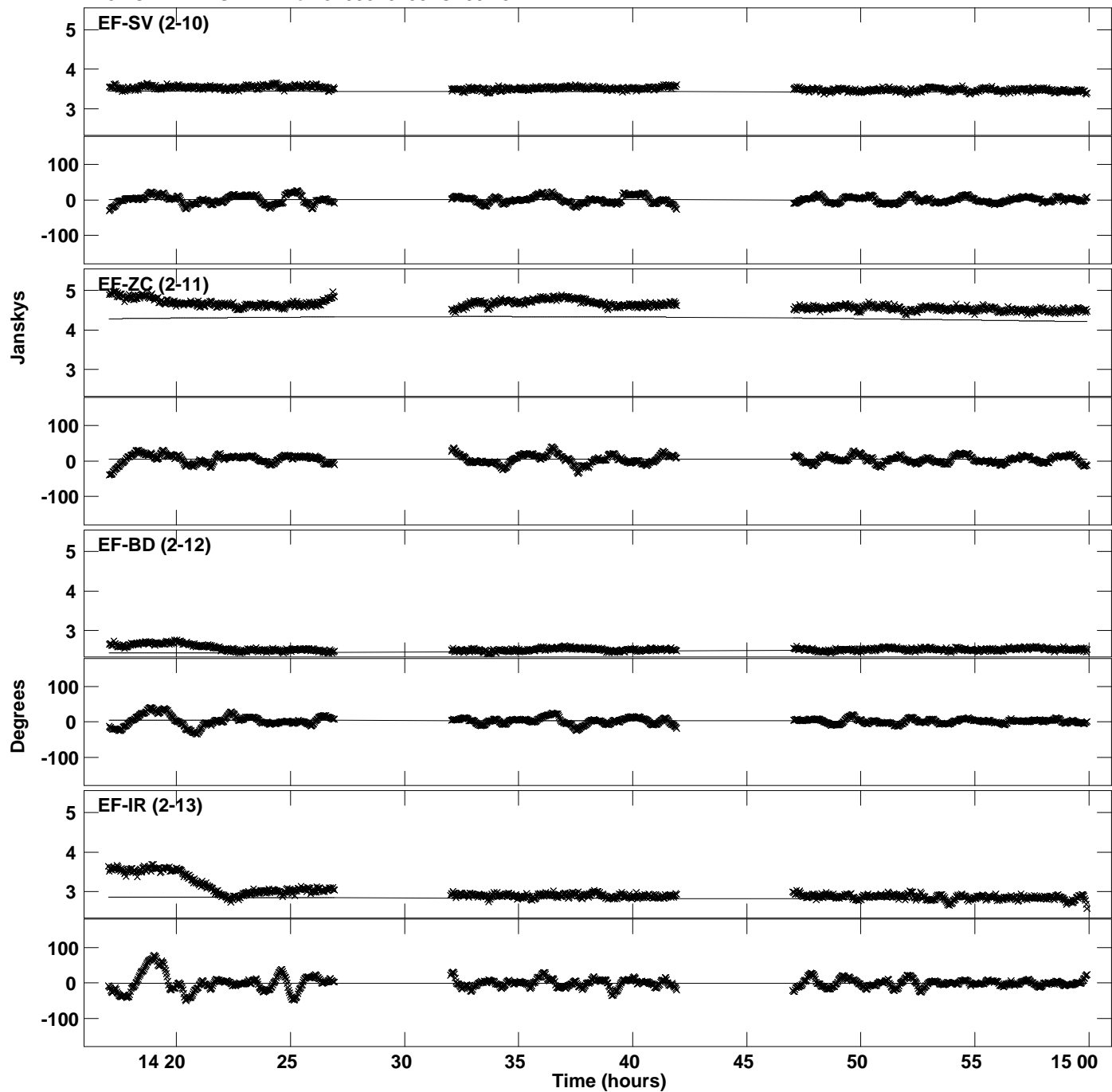
Plot file version 14 created 21-JUL-2020 15:28:08
Amplitude and Phase vs Time for J1058+0133.MULTI.1 CL # 3
IF 7 CHAN 1 STK LL of J1058+0133.ICL001.3



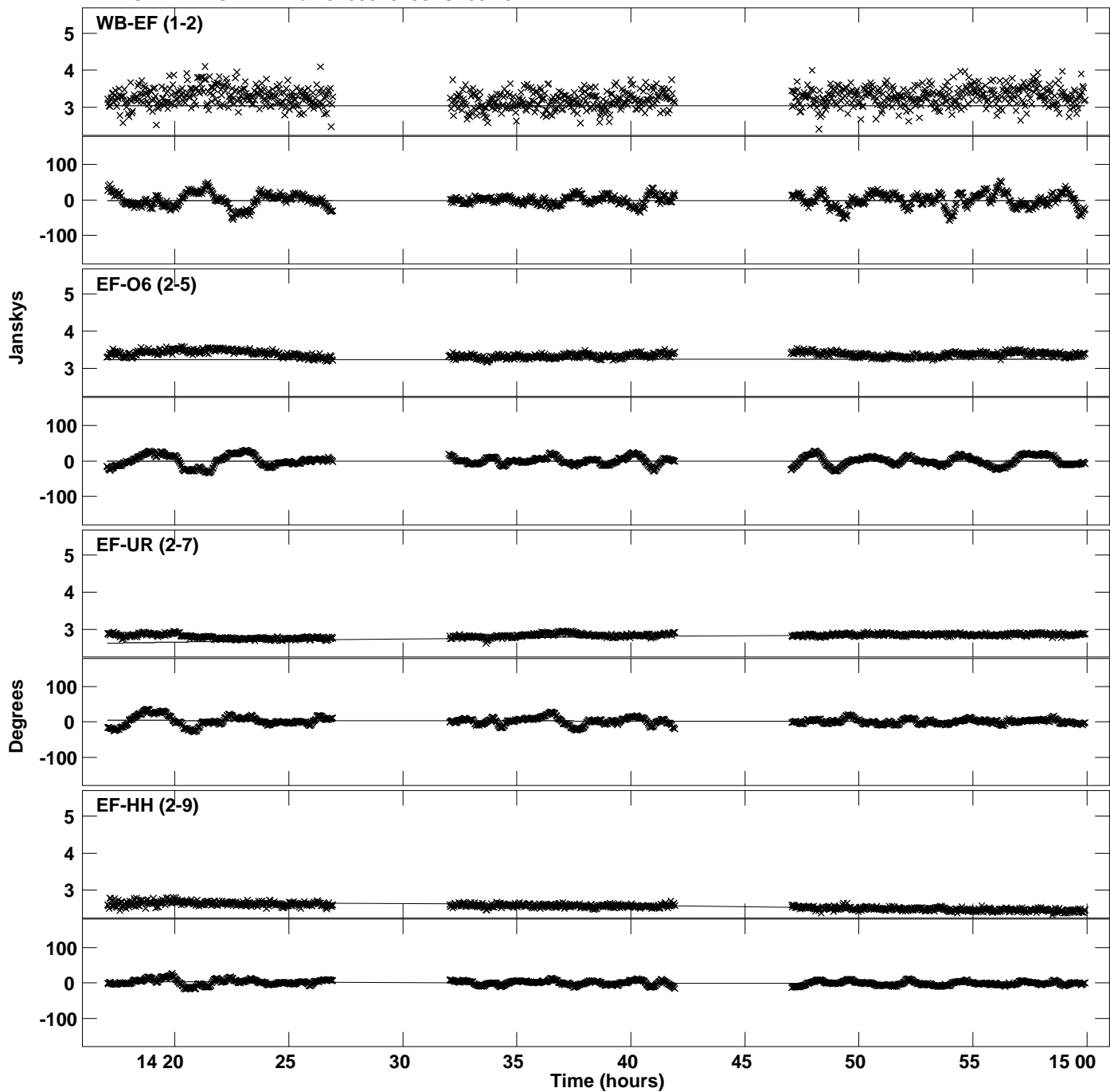
Plot file version 15 created 21-JUL-2020 15:28:08
Amplitude and Phase vs Time for J1058+0133.MULTI.1 CL # 3
IF 8 CHAN 1 STK LL of J1058+0133.ICL001.3



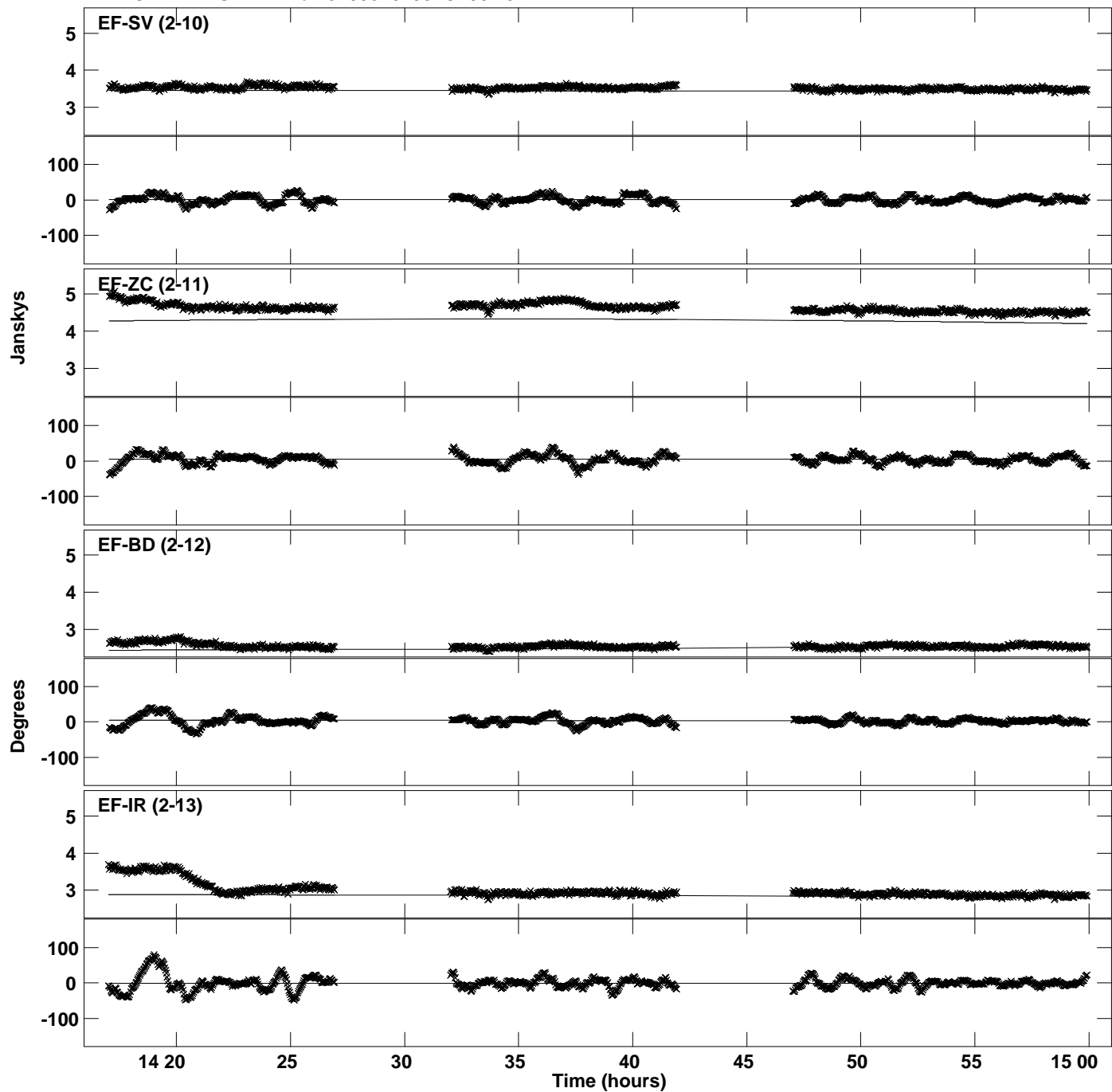
PLot file version 16 created 21-JUL-2020 15:28:08
Amplitude and Phase vs Time for J1058+0133.MULTI.1 CL # 3
IF 8 CHAN 1 STK LL of J1058+0133.ICL001.3



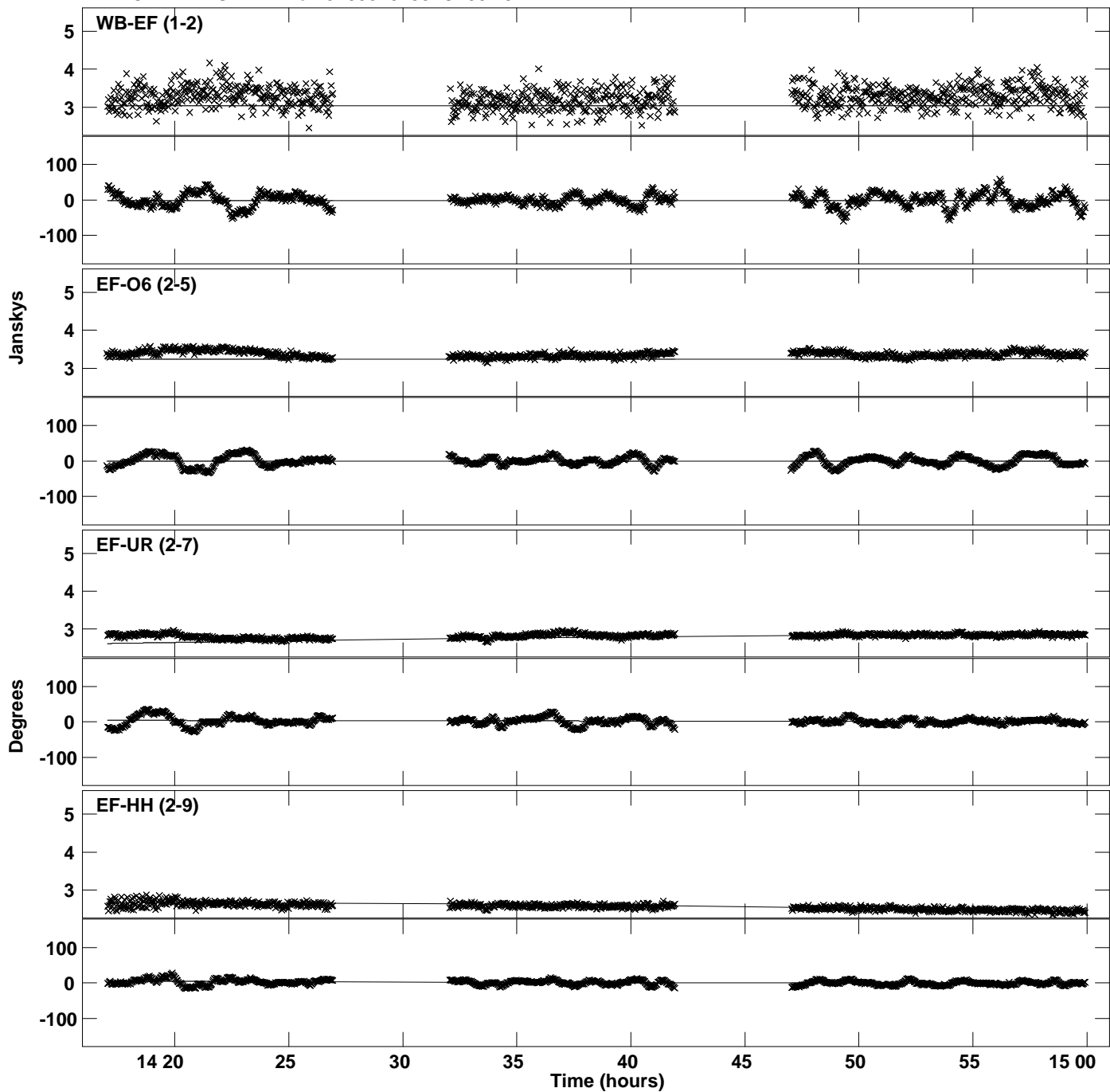
Plot file version 17 created 21-JUL-2020 15:28:08
Amplitude andPhase vs Time for J1058+0133.MULTI.1 CL # 3
IF 1 CHAN 1 STK RR of J1058+0133.ICL001.3



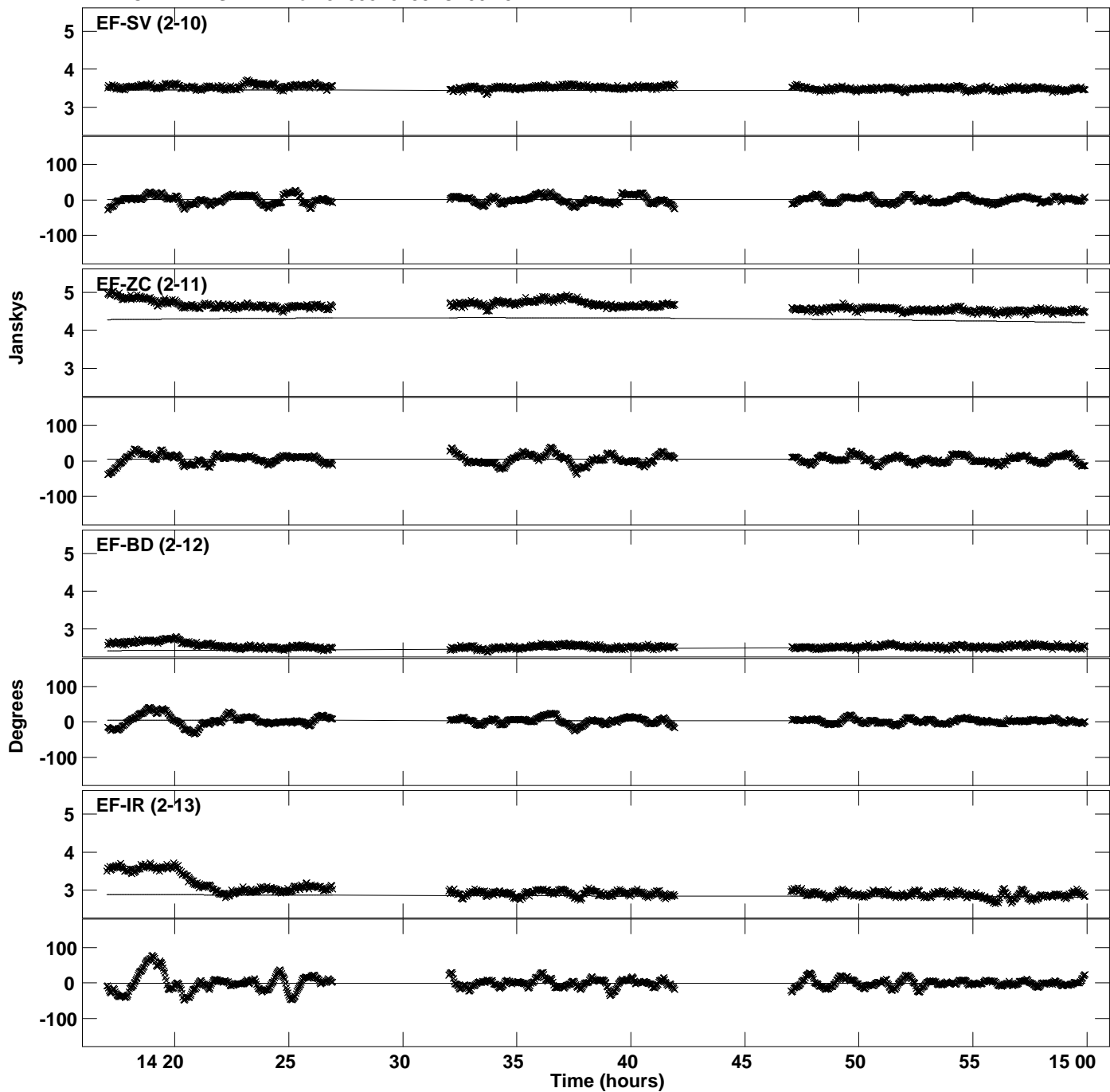
Plot file version 18 created 21-JUL-2020 15:28:08
Amplitude and Phase vs Time for J1058+0133.MULTI.1 CL # 3
IF 1 CHAN 1 STK RR of J1058+0133.ICL001.3



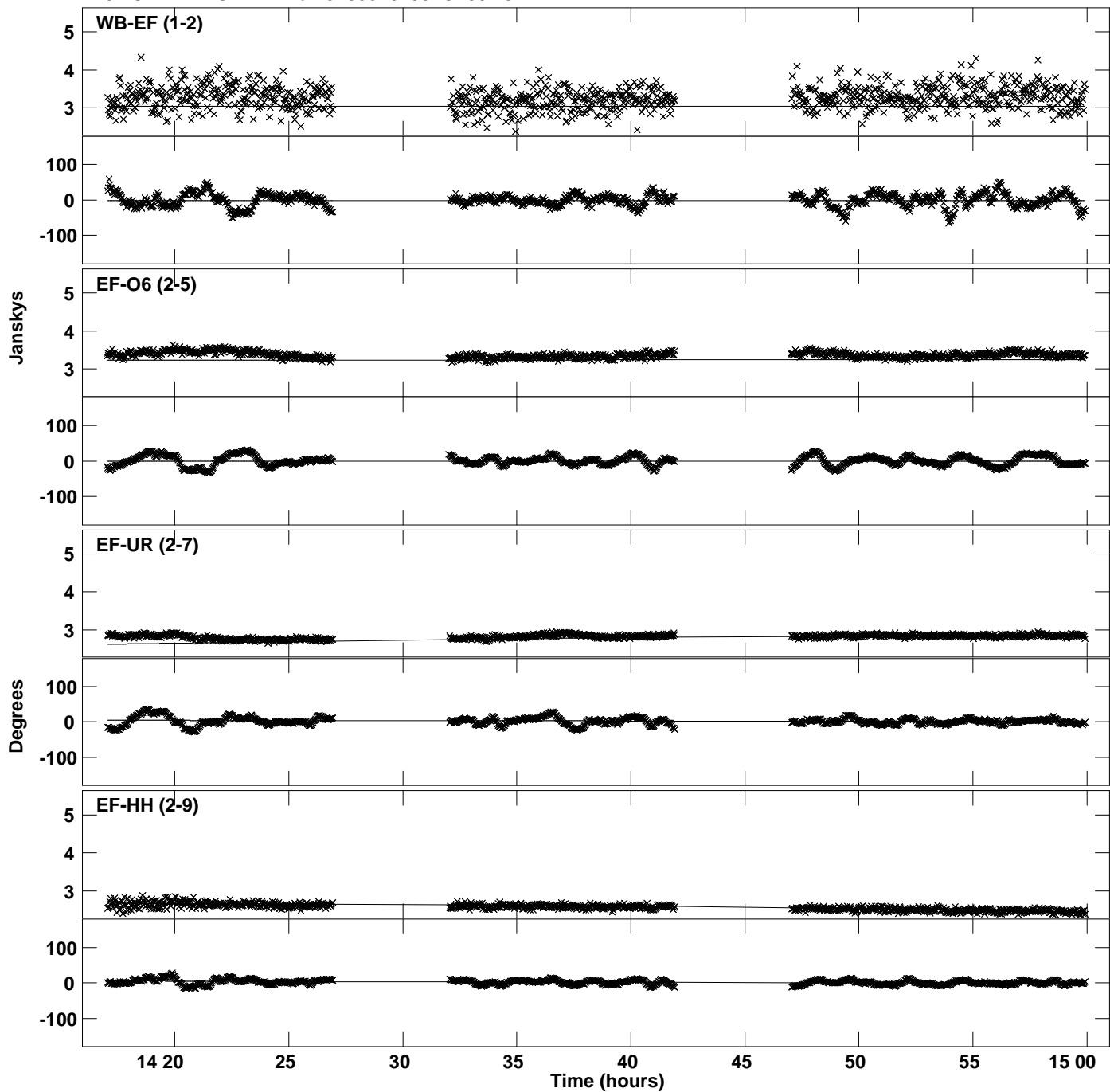
Plot file version 19 created 21-JUL-2020 15:28:09
Amplitude andPhase vs Time for J1058+0133.MULTI.1 CL # 3
IF 2 CHAN 1 STK RR of J1058+0133.ICL001.3



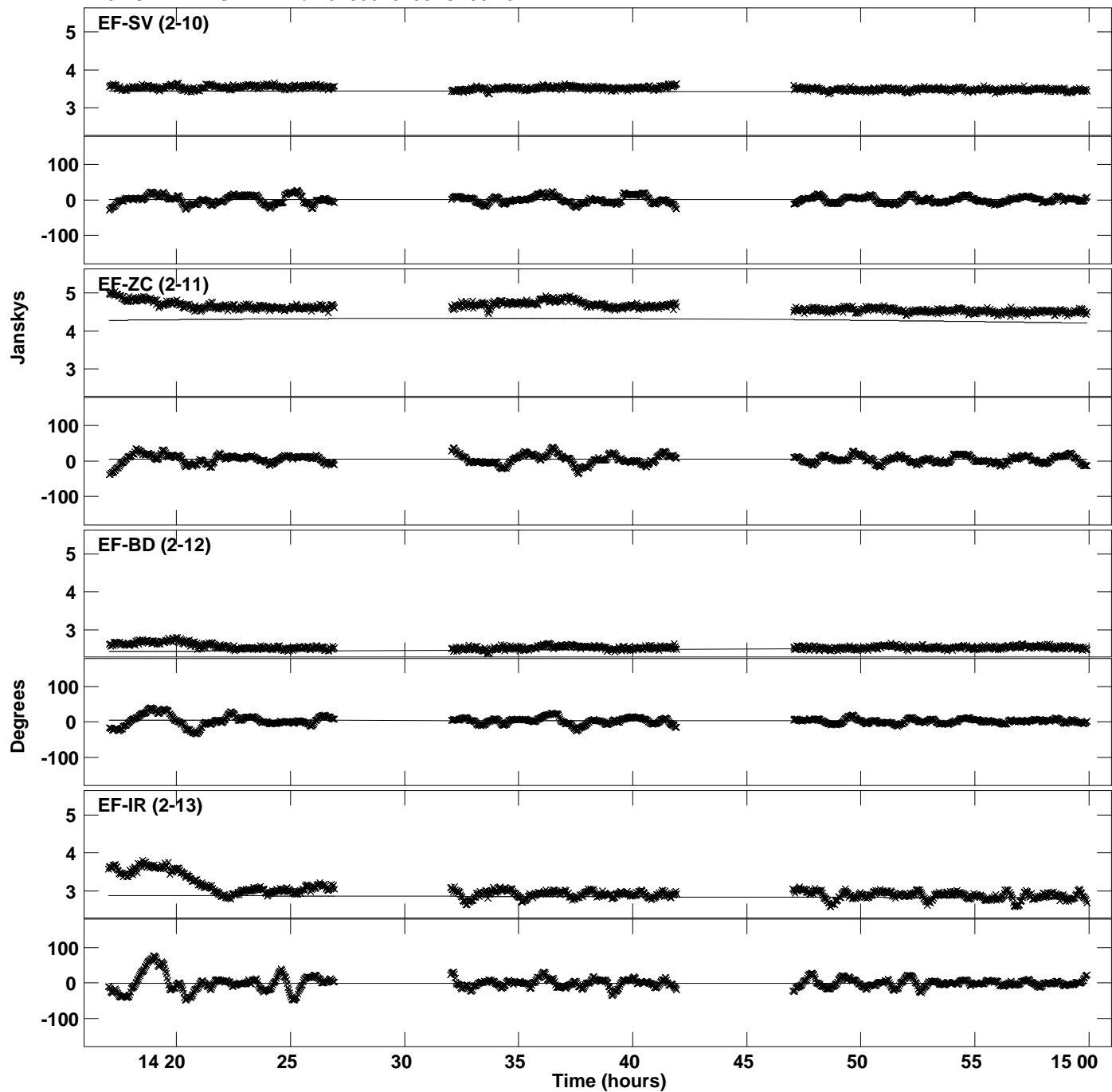
PLot file version 20 created 21-JUL-2020 15:28:09
Amplitude and Phase vs Time for J1058+0133.MULTI.1 CL # 3
IF 2 CHAN 1 STK RR of J1058+0133.ICL001.3



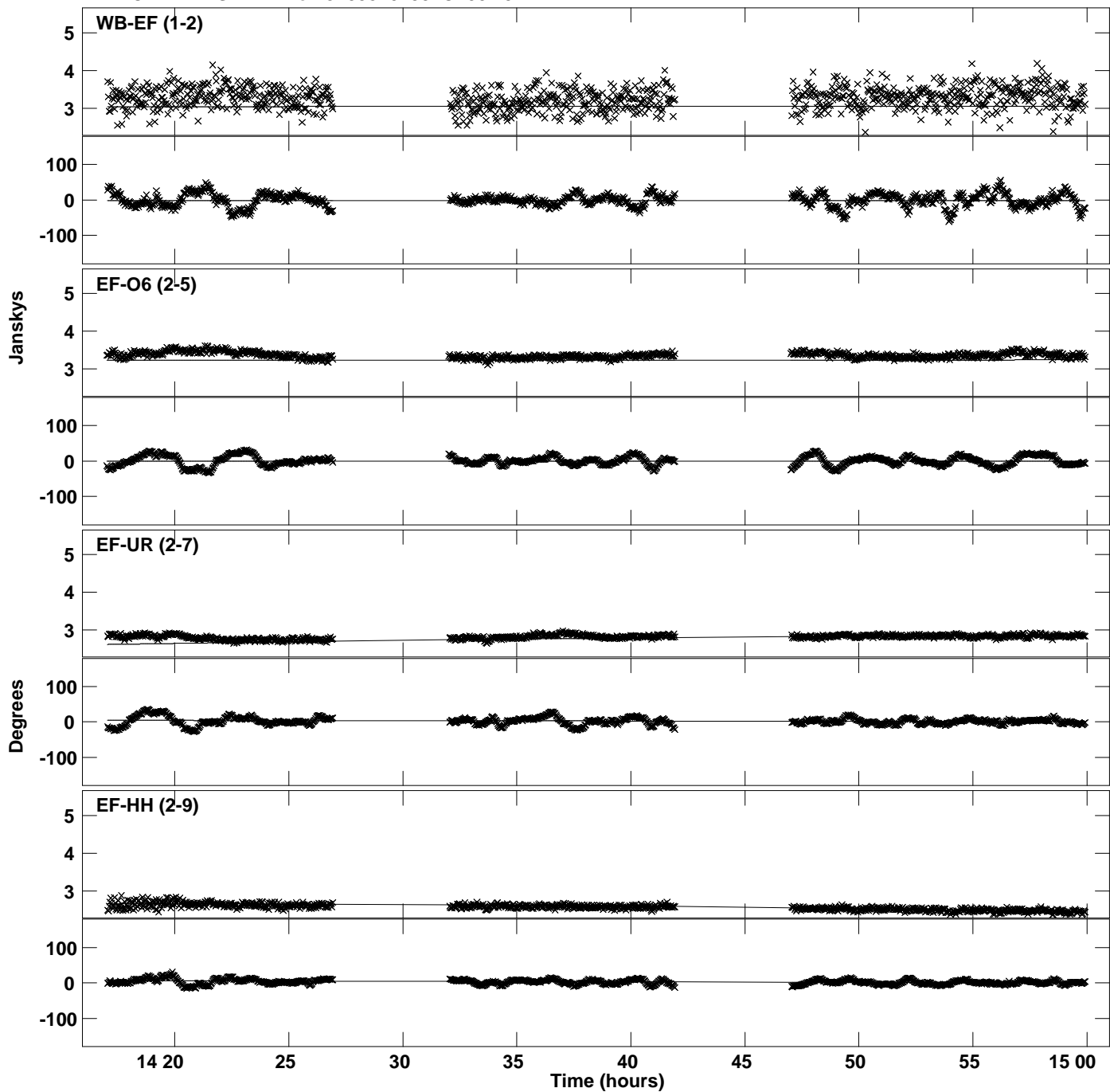
Plot file version 21 created 21-JUL-2020 15:28:09
Amplitude and Phase vs Time for J1058+0133.MULTI.1 CL # 3
IF 3 CHAN 1 STK RR of J1058+0133.ICL001.3



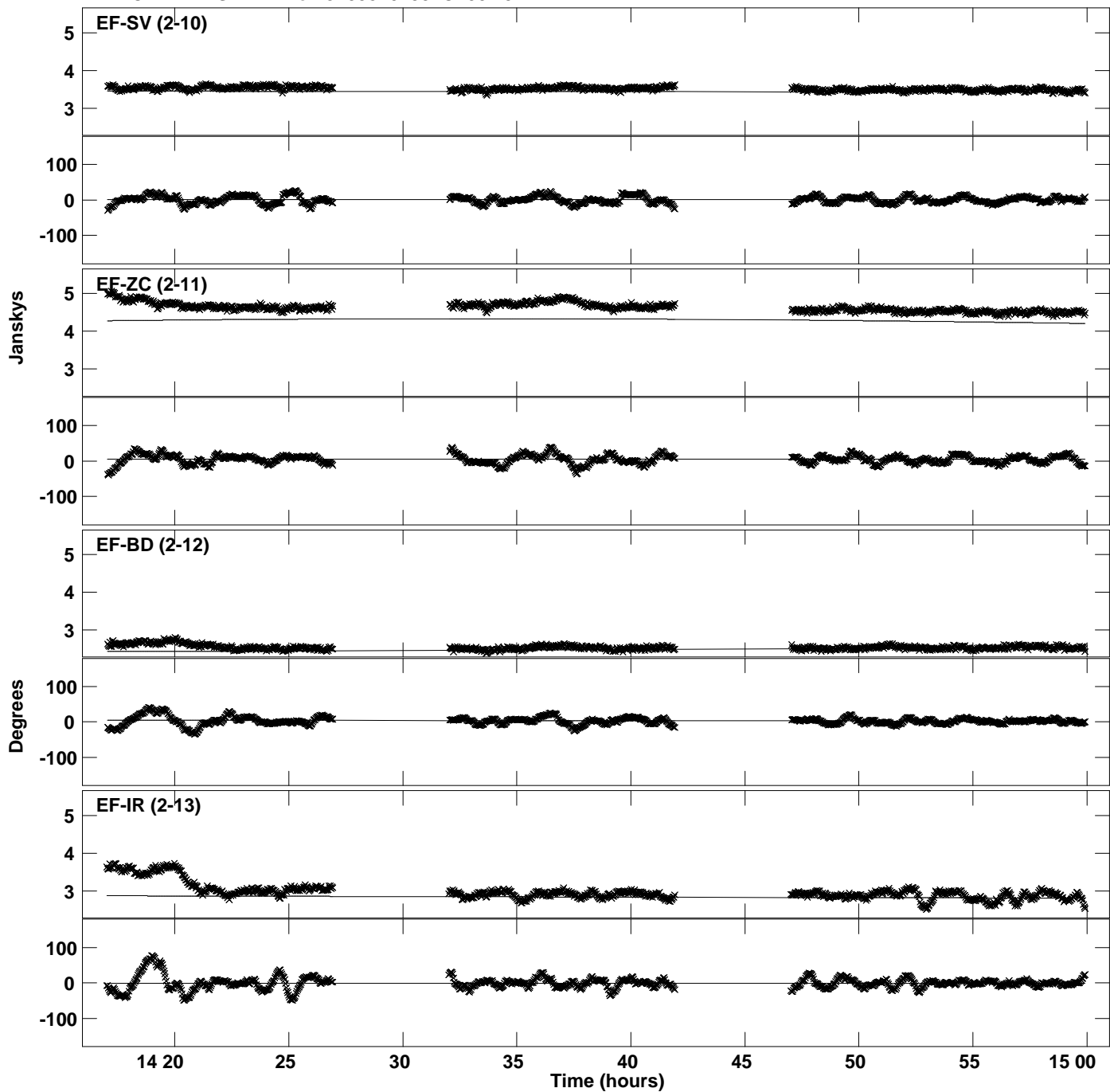
PLot file version 22 created 21-JUL-2020 15:28:09
Amplitude and Phase vs Time for J1058+0133.MULTI.1 CL # 3
IF 3 CHAN 1 STK RR of J1058+0133.ICL001.3



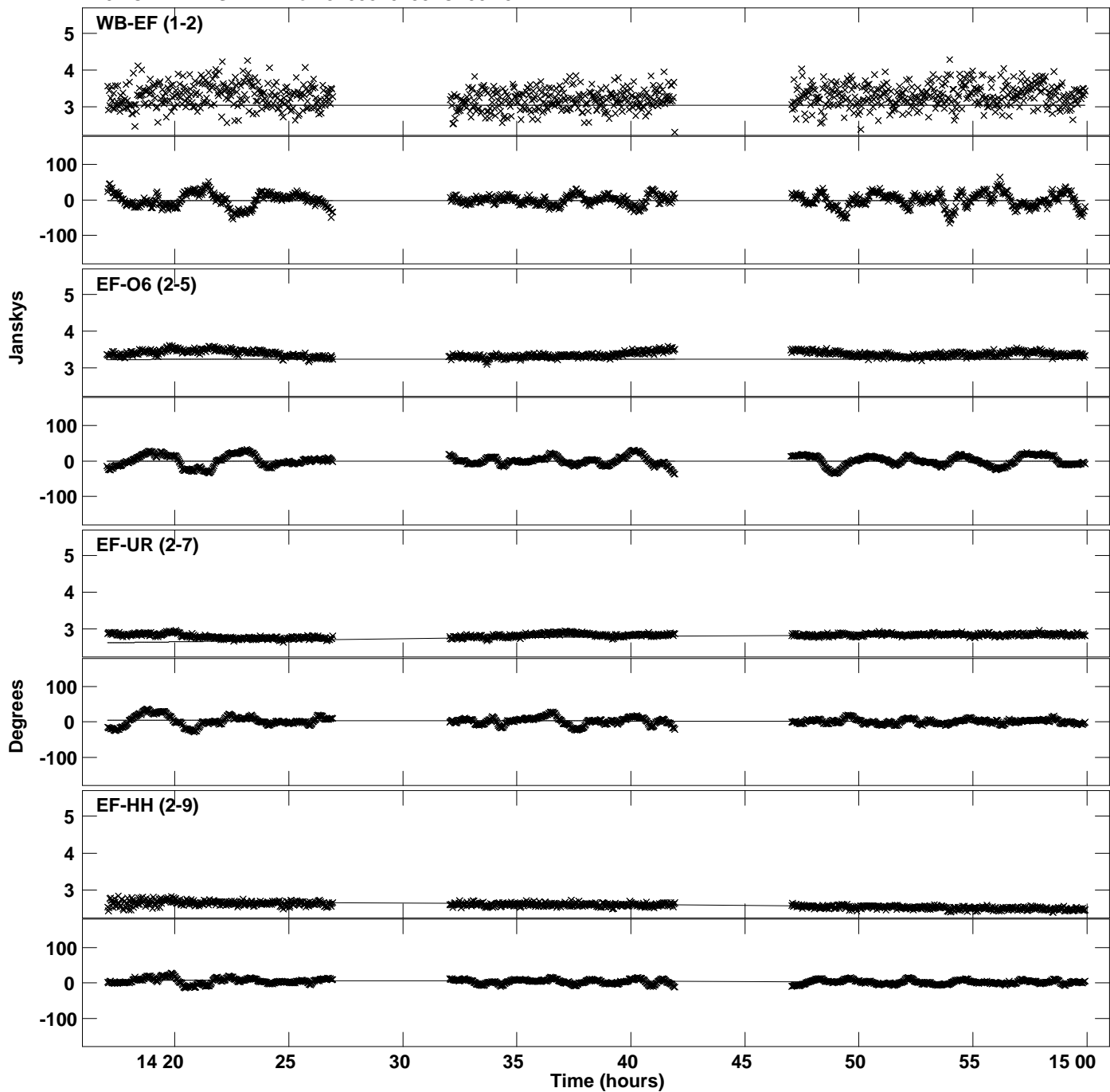
Plot file version 23 created 21-JUL-2020 15:28:10
Amplitude and Phase vs Time for J1058+0133.MULTI.1 CL # 3
IF 4 CHAN 1 STK RR of J1058+0133.ICL001.3



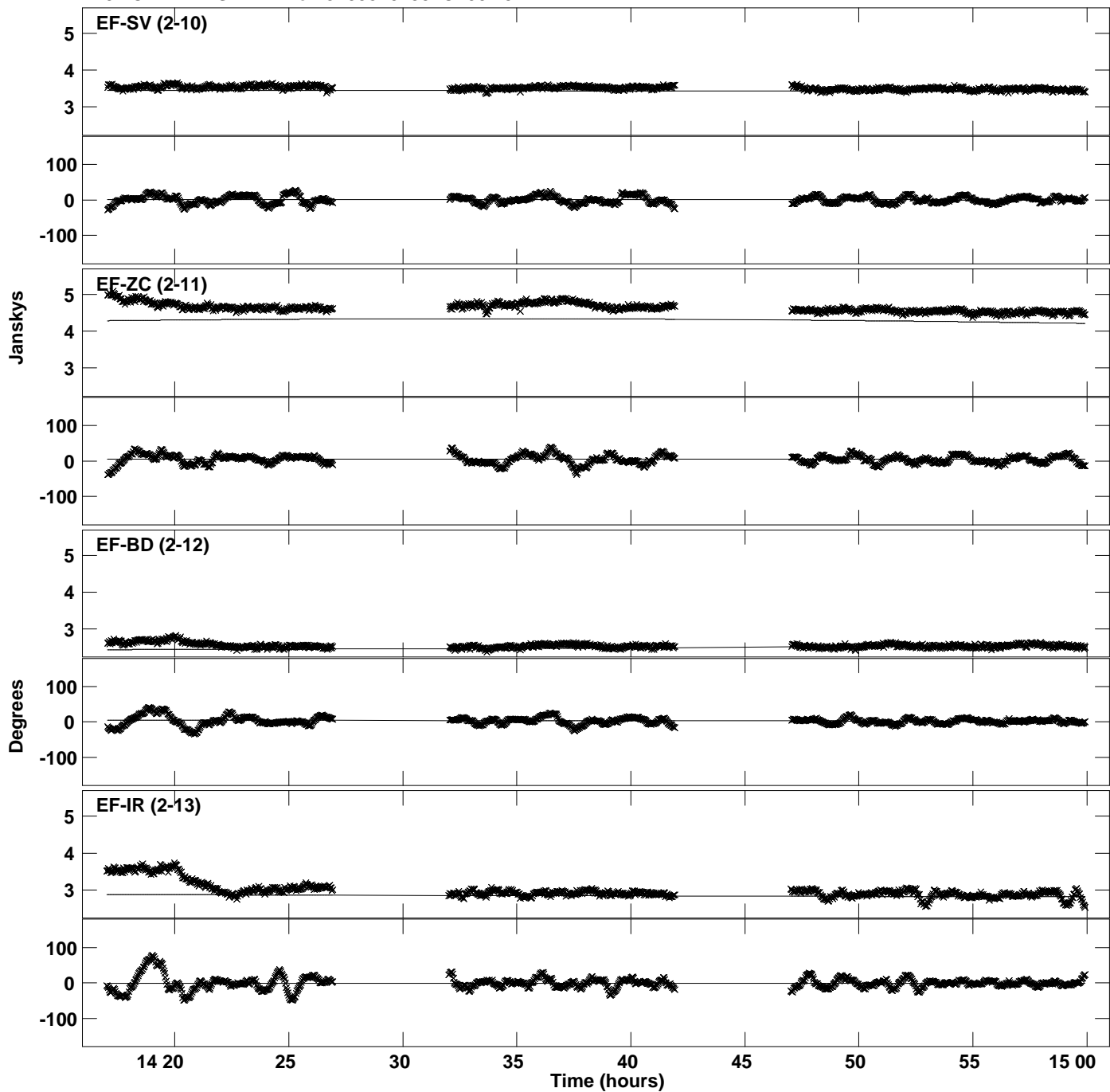
Plot file version 24 created 21-JUL-2020 15:28:10
Amplitude and Phase vs Time for J1058+0133.MULTI.1 CL # 3
IF 4 CHAN 1 STK RR of J1058+0133.ICL001.3



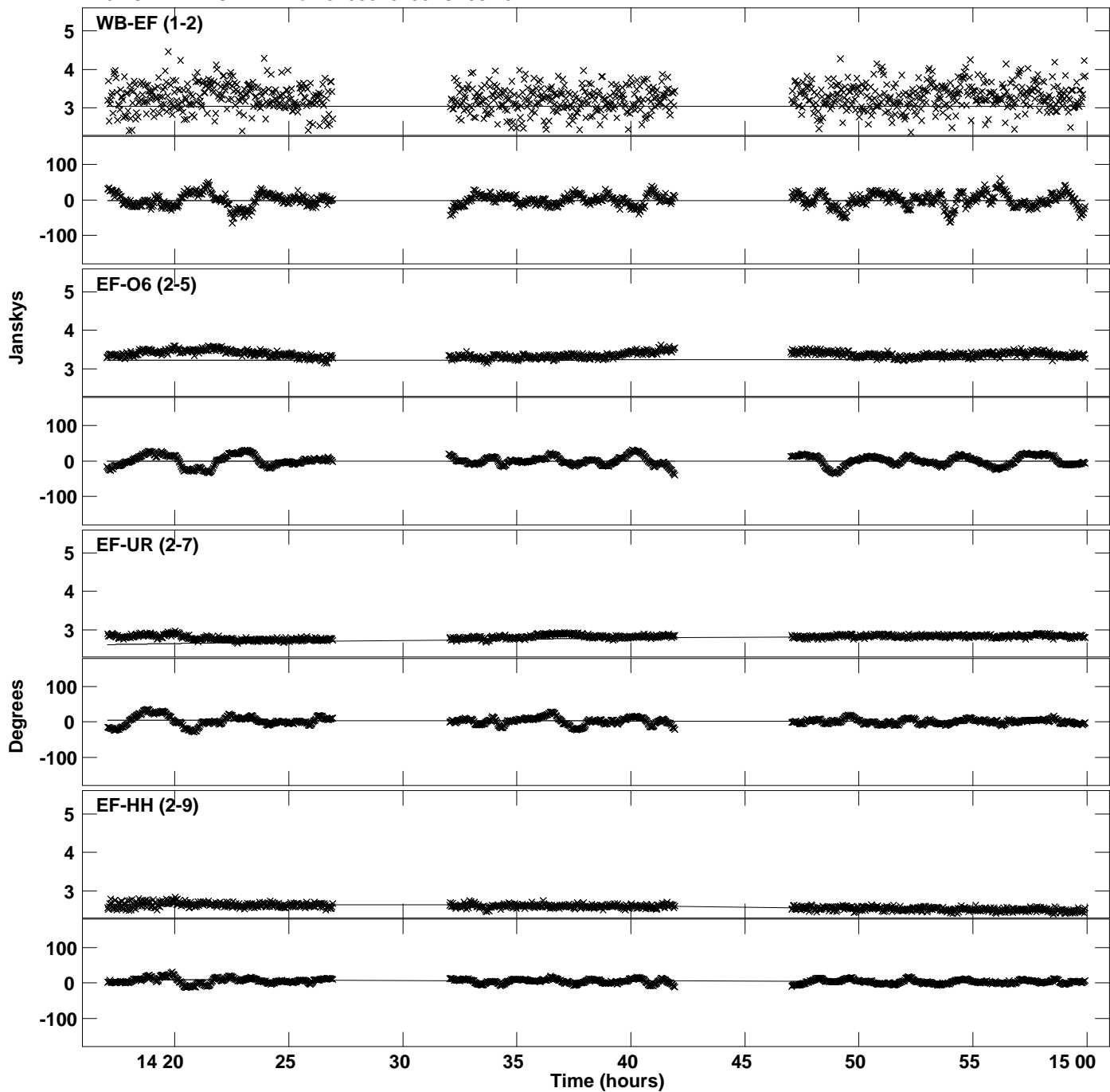
Plot file version 25 created 21-JUL-2020 15:28:10
Amplitude and Phase vs Time for J1058+0133.MULTI.1 CL # 3
IF 5 CHAN 1 STK RR of J1058+0133.ICL001.3



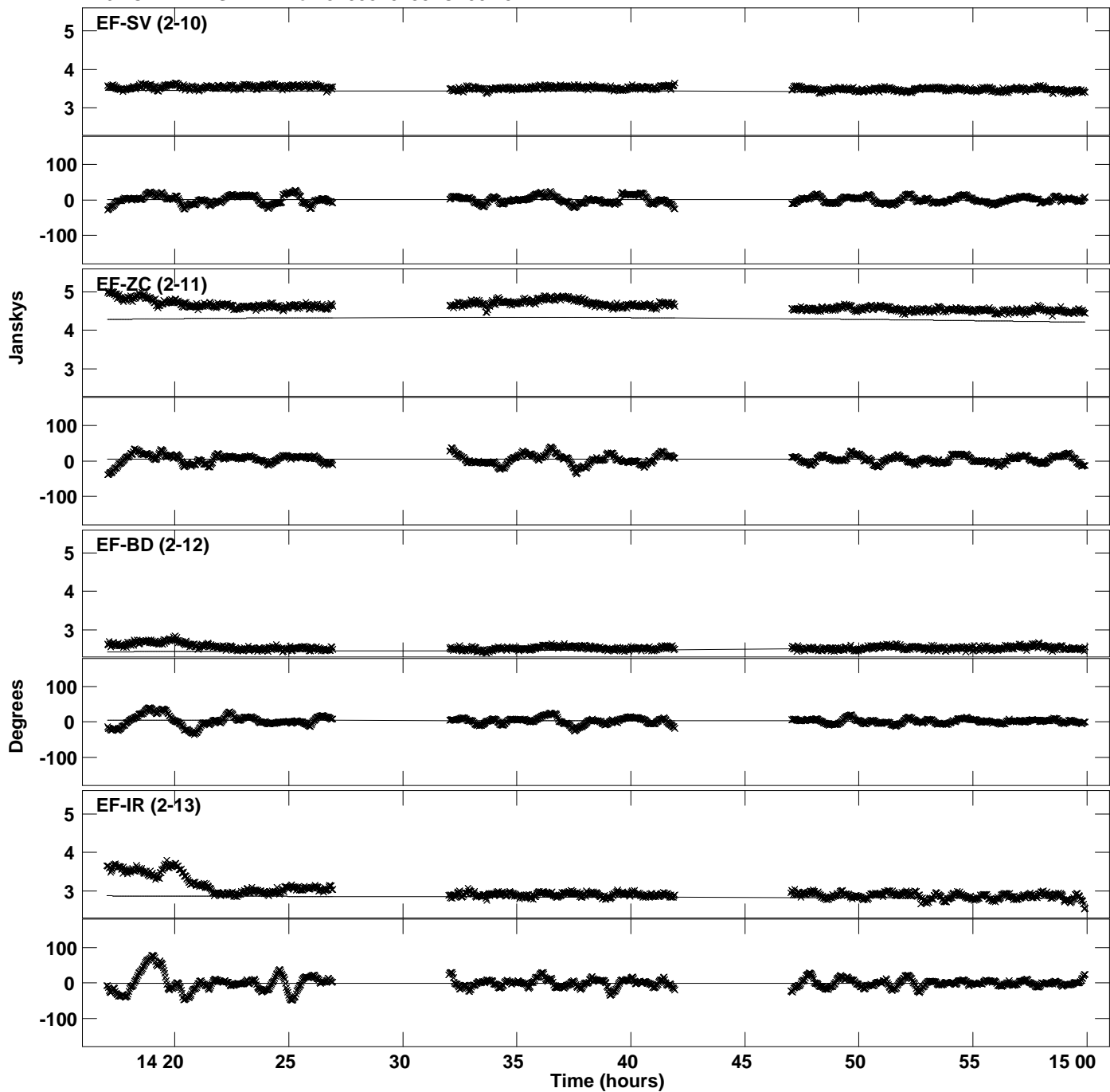
PLot file version 26 created 21-JUL-2020 15:28:10
Amplitude andPhase vs Time for J1058+0133.MULTI.1 CL # 3
IF 5 CHAN 1 STK RR of J1058+0133.ICL001.3



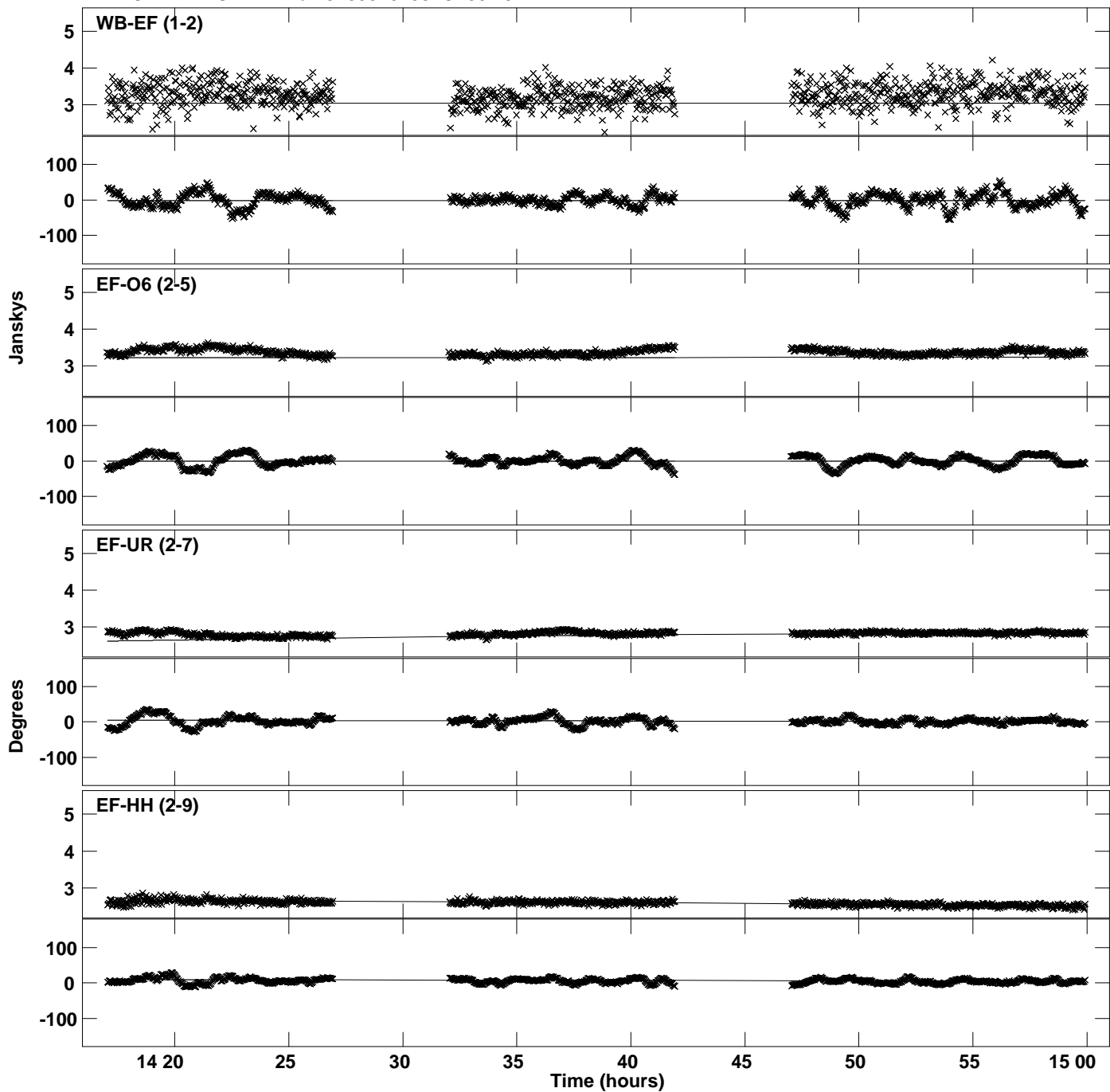
Plot file version 27 created 21-JUL-2020 15:28:11
Amplitude and Phase vs Time for J1058+0133.MULTI.1 CL # 3
IF 6 CHAN 1 STK RR of J1058+0133.ICL001.3



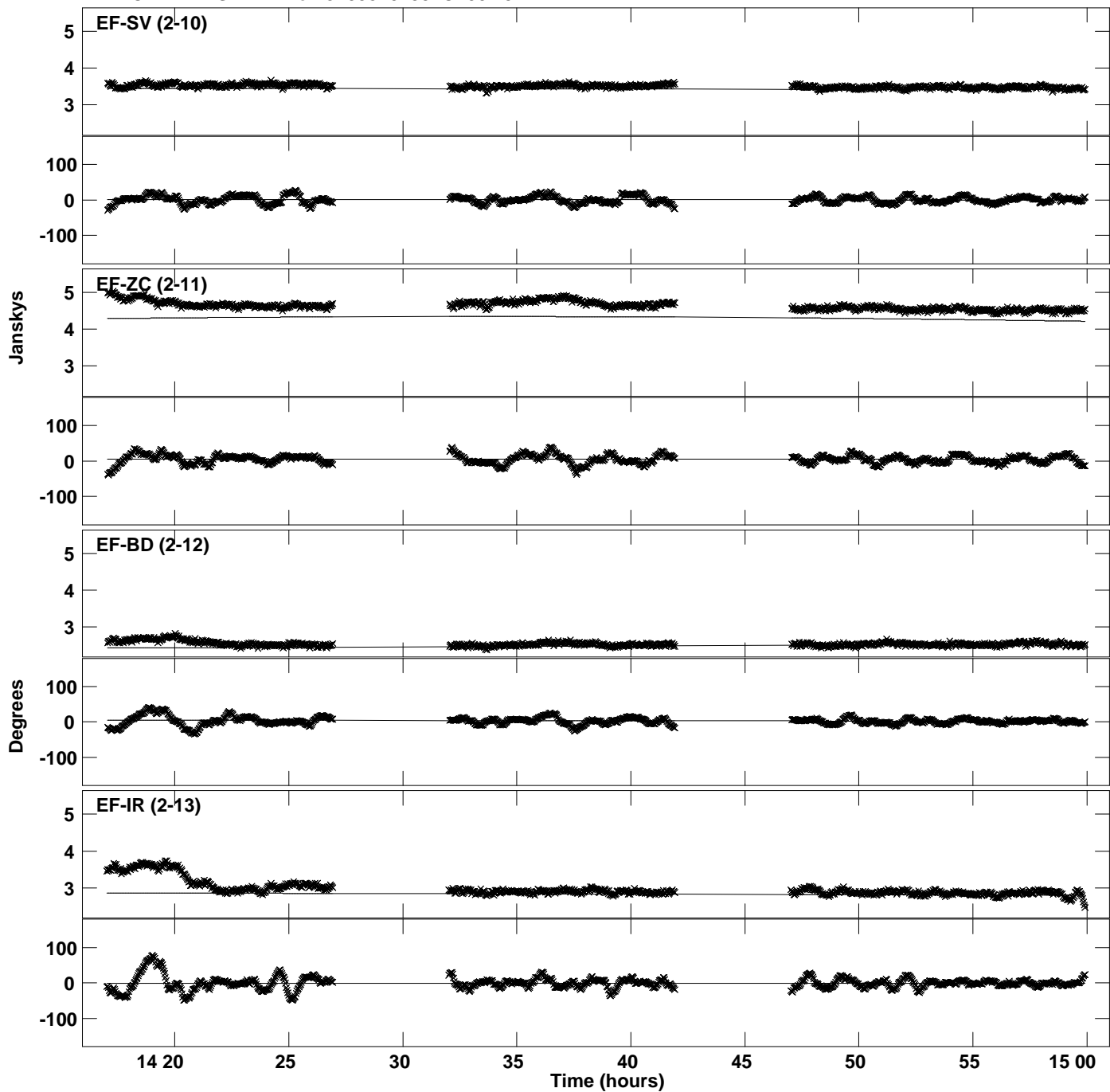
Plot file version 28 created 21-JUL-2020 15:28:11
Amplitude and Phase vs Time for J1058+0133.MULTI.1 CL # 3
IF 6 CHAN 1 STK RR of J1058+0133.ICL001.3



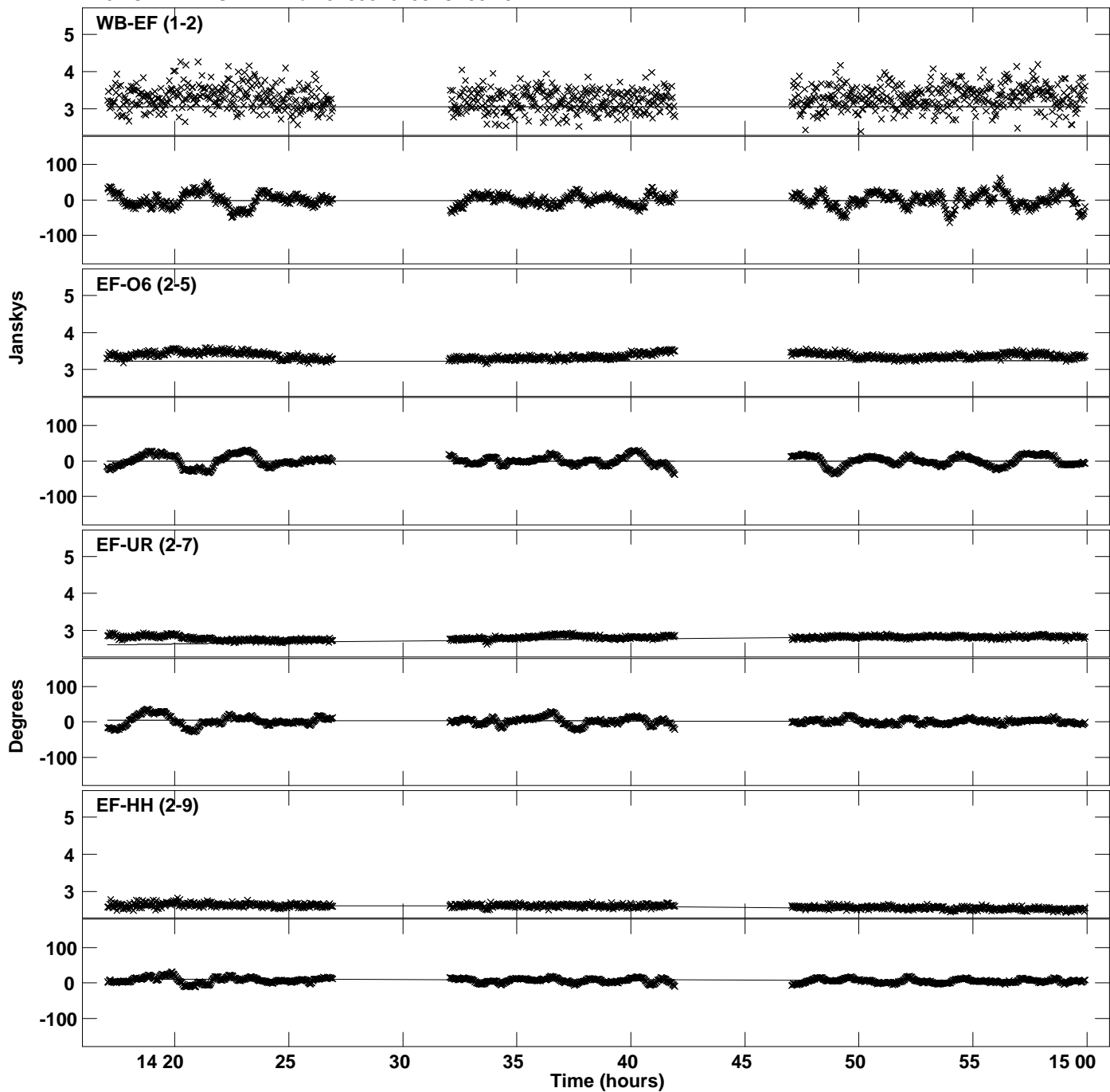
Plot file version 29 created 21-JUL-2020 15:28:11
Amplitude and Phase vs Time for J1058+0133.MULTI.1 CL # 3
IF 7 CHAN 1 STK RR of J1058+0133.ICL001.3



PLot file version 30 created 21-JUL-2020 15:28:11
Amplitude andPhase vs Time for J1058+0133.MULTI.1 CL # 3
IF 7 CHAN 1 STK RR of J1058+0133.ICL001.3



Plot file version 31 created 21-JUL-2020 15:28:12
Amplitude and Phase vs Time for J1058+0133.MULTI.1 CL # 3
IF 8 CHAN 1 STK RR of J1058+0133.ICL001.3



Plot file version 32 created 21-JUL-2020 15:28:12
Amplitude and Phase vs Time for J1058+0133.MULTI.1 CL # 3
IF 8 CHAN 1 STK RR of J1058+0133.ICL001.3

