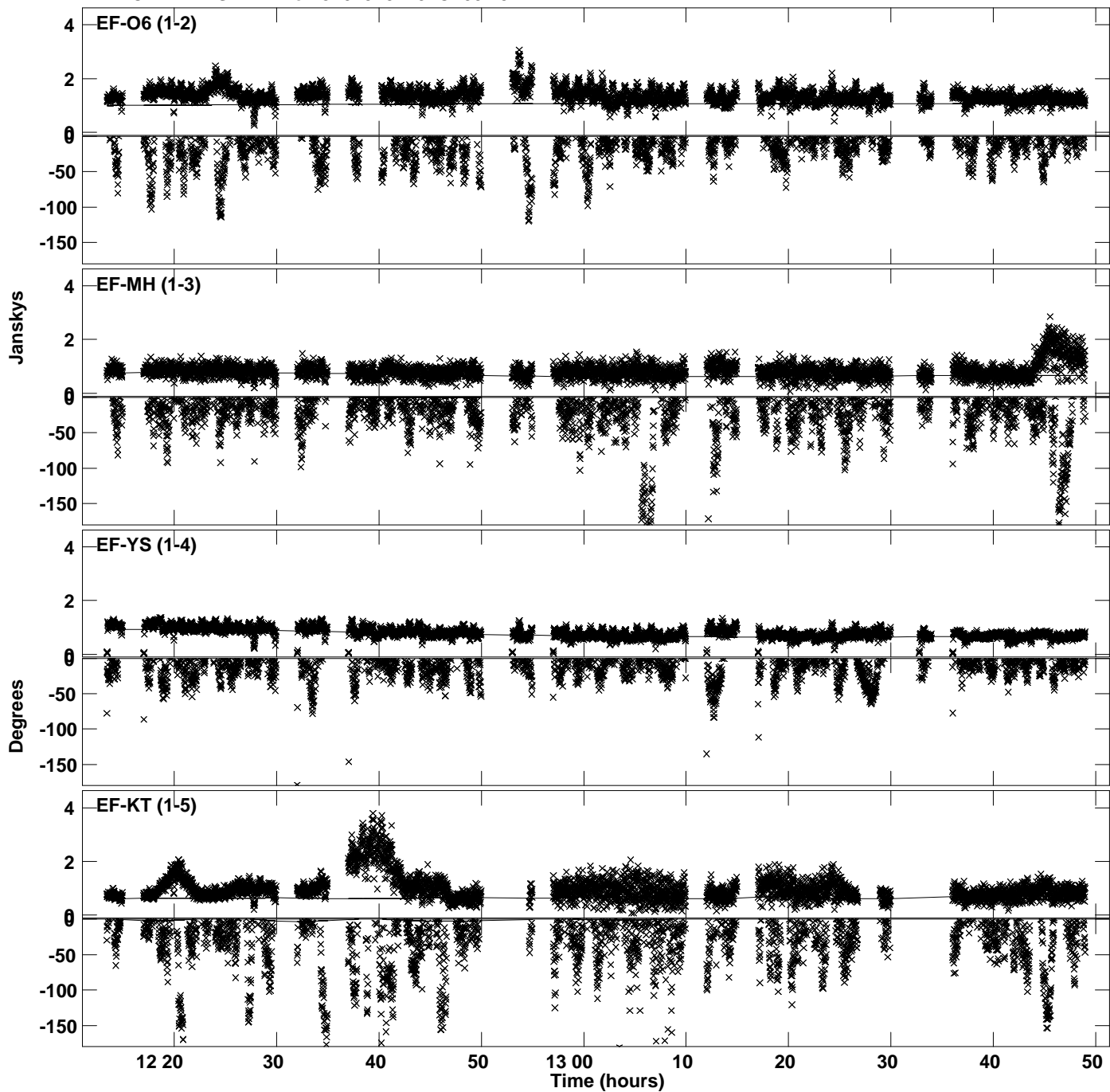
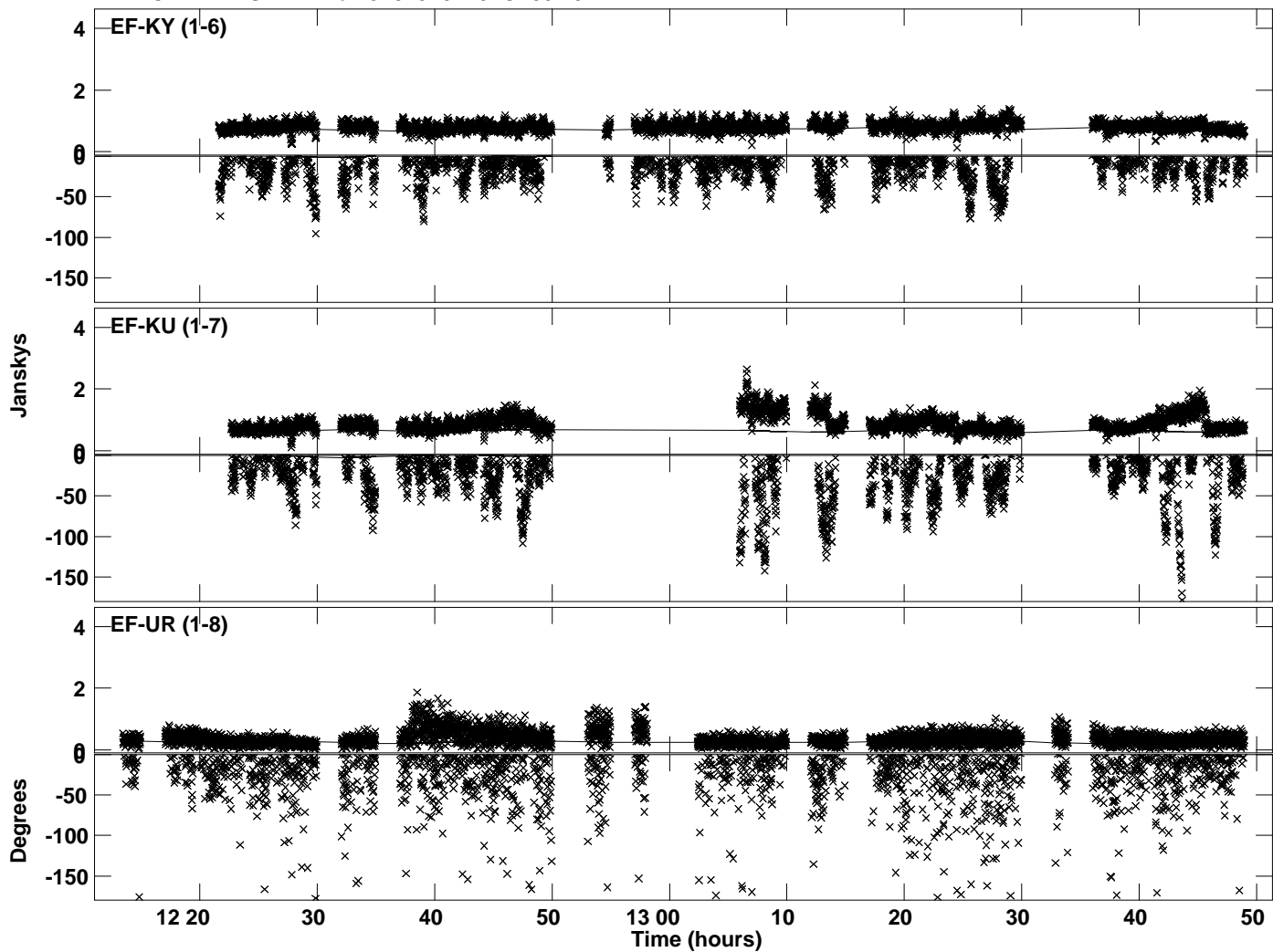


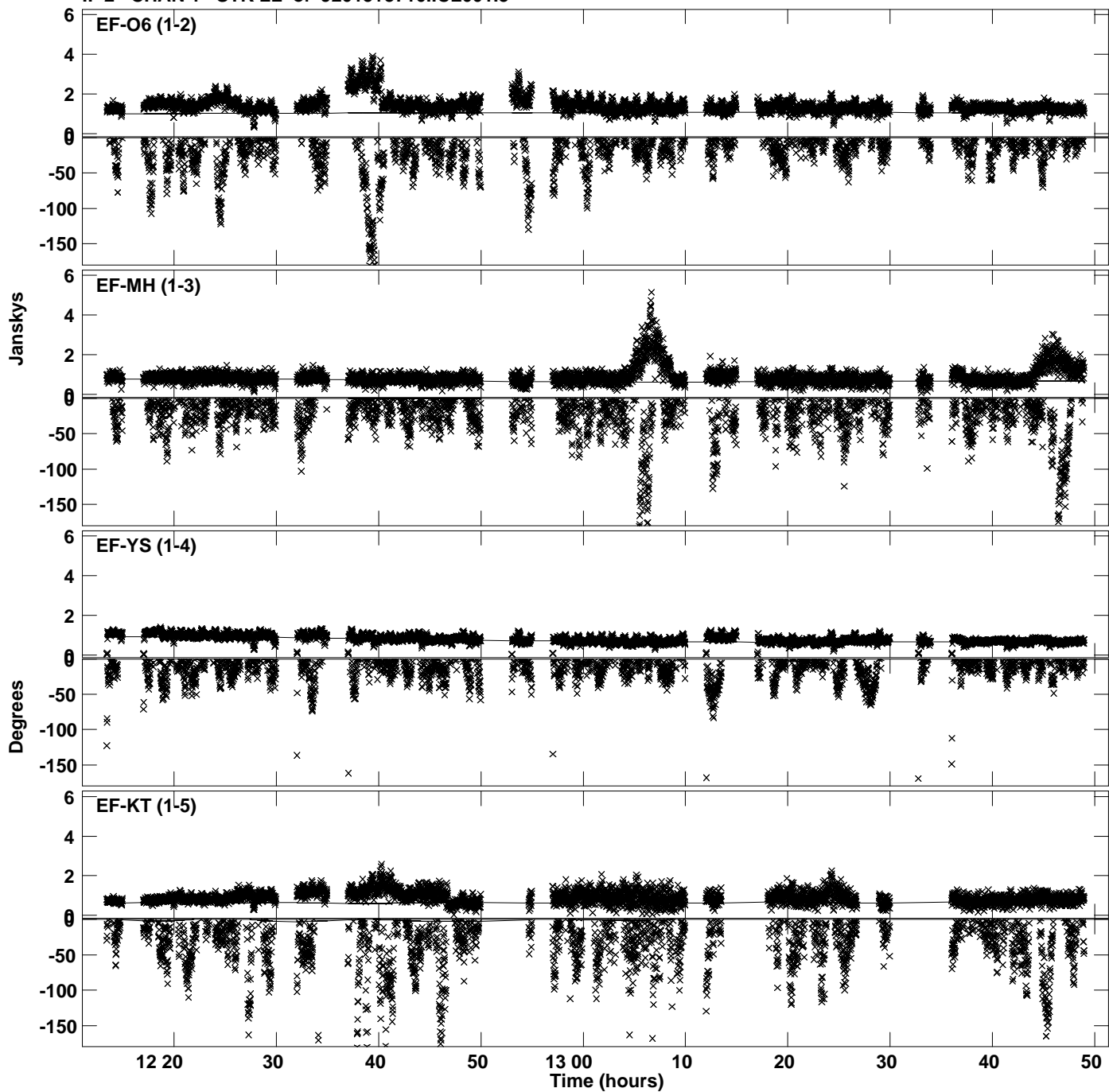
Plot file version 1 created 17-JAN-2022 20:53:51  
Amplitude and Phase vs Time for J2015+3710.MULTI.1 CL # 3  
IF 1 CHAN 1 STK LL of J2015+3710.ICL001.3



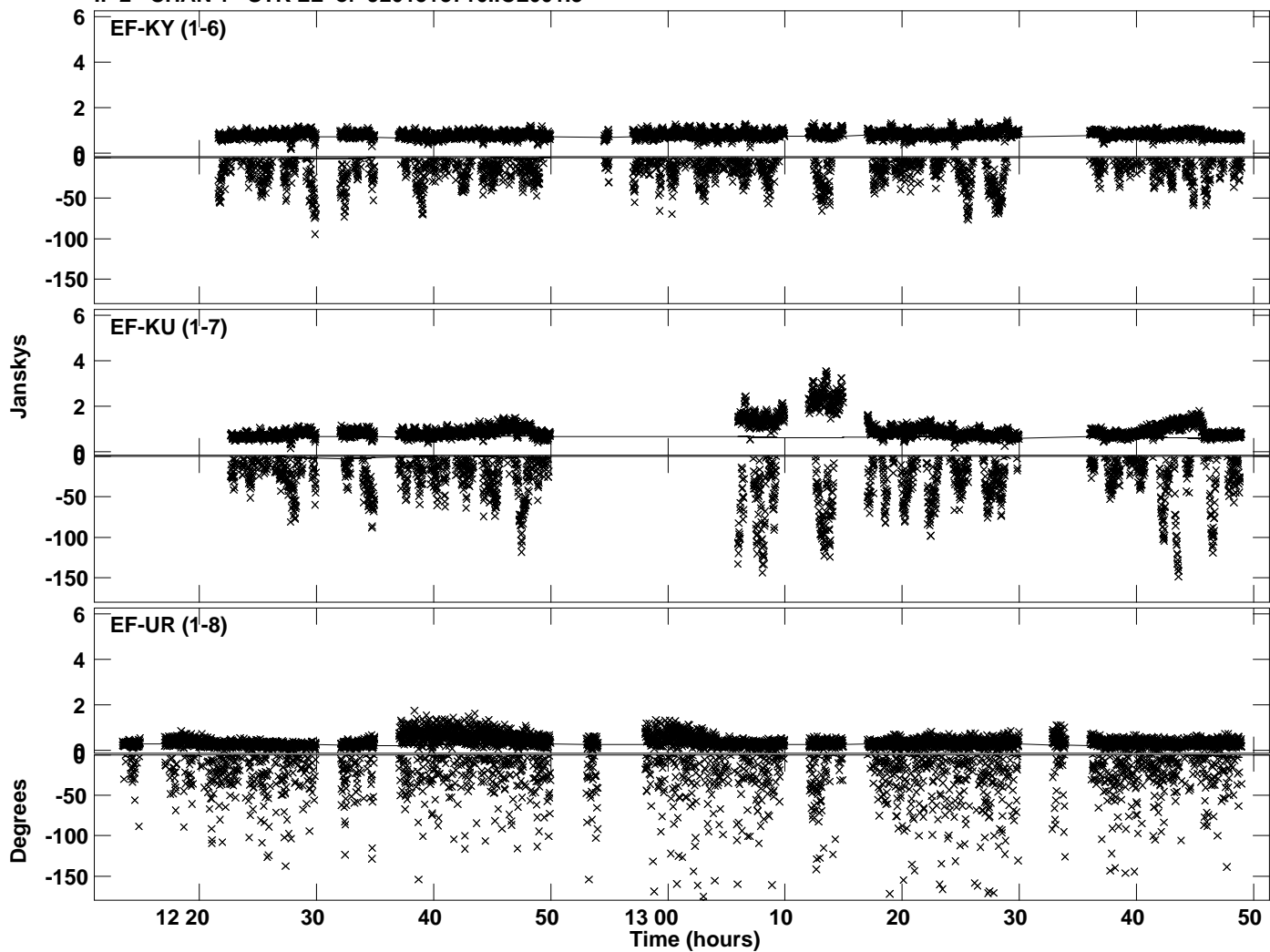
Plot file version 2 created 17-JAN-2022 20:53:51  
Amplitude and Phase vs Time for J2015+3710.MULTI.1 CL # 3  
IF 1 CHAN 1 STK LL of J2015+3710.ICL001.3



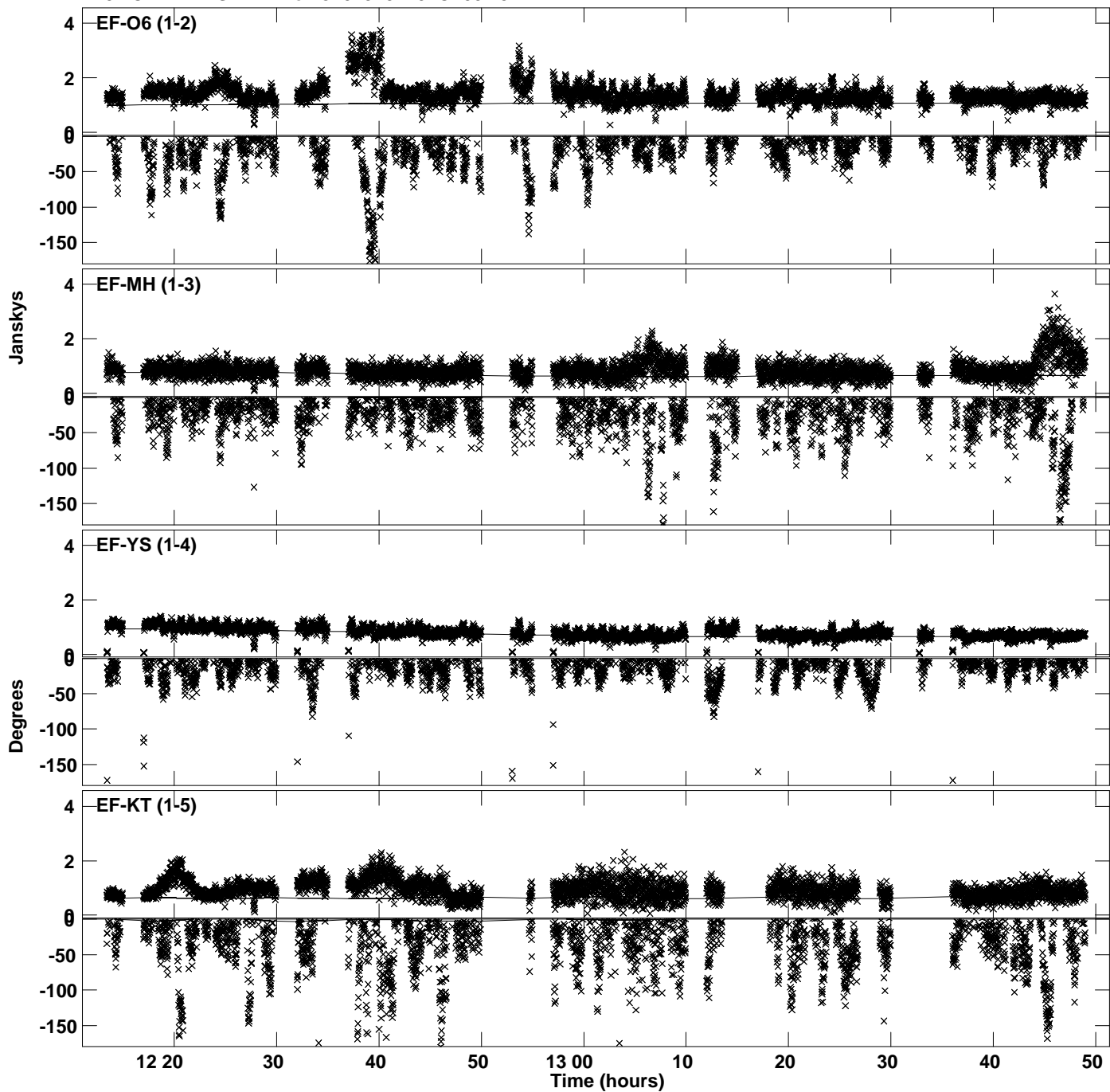
Plot file version 3 created 17-JAN-2022 20:53:52  
Amplitude and Phase vs Time for J2015+3710.MULTI.1 CL # 3  
IF 2 CHAN 1 STK LL of J2015+3710.ICL001.3



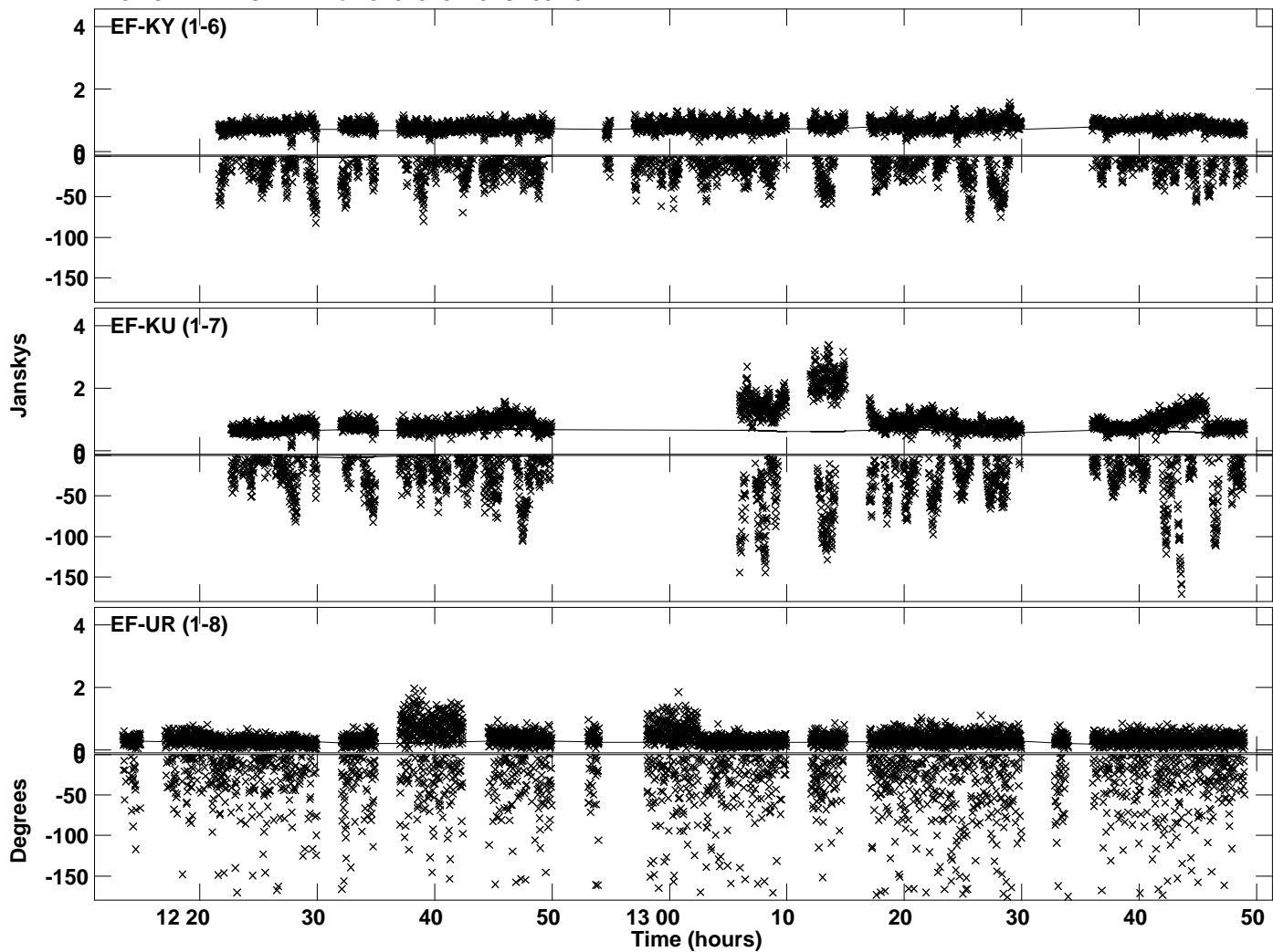
Plot file version 4 created 17-JAN-2022 20:53:52  
Amplitude and Phase vs Time for J2015+3710.MULTI.1 CL # 3  
IF 2 CHAN 1 STK LL of J2015+3710.ICL001.3



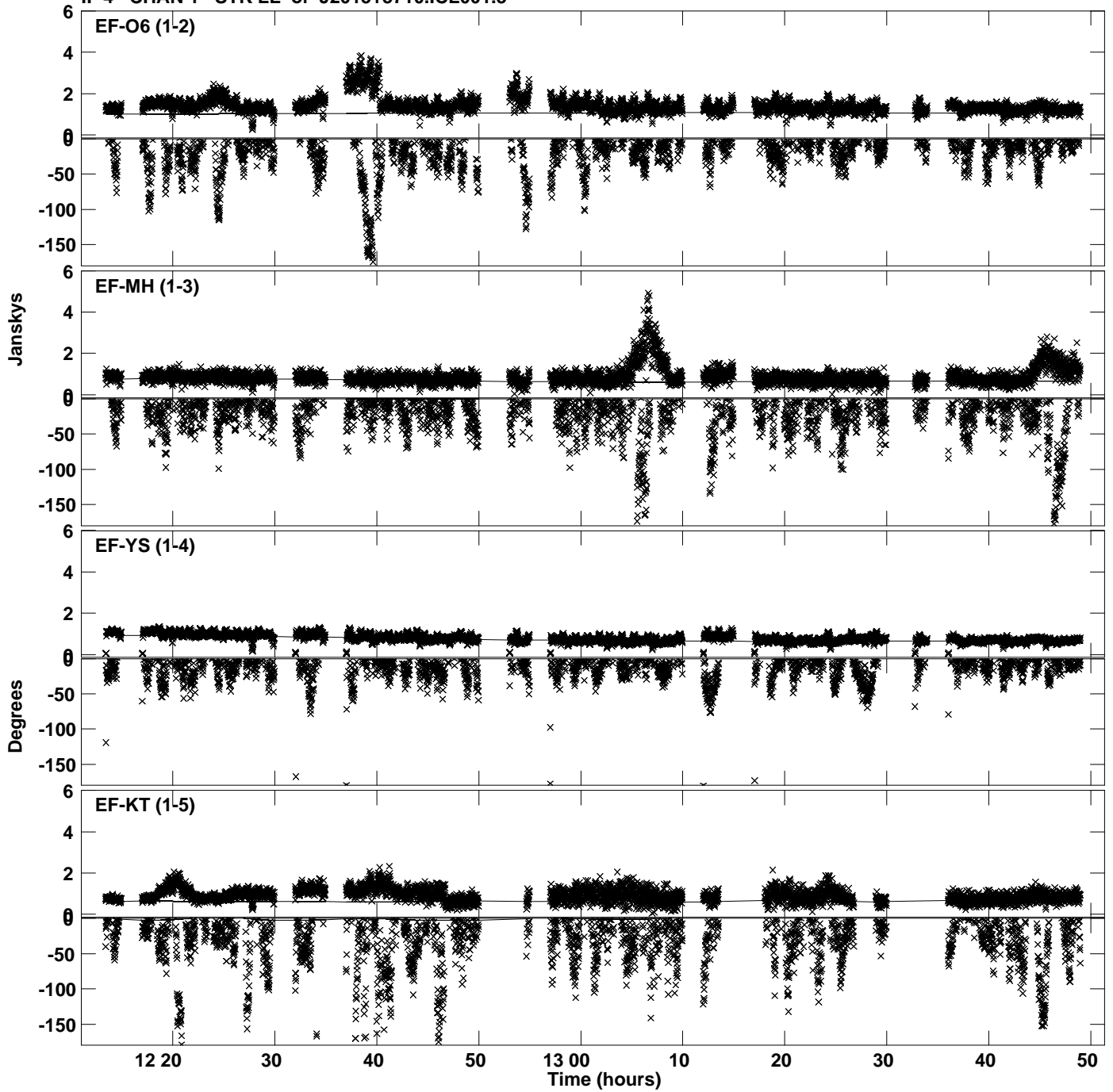
Plot file version 5 created 17-JAN-2022 20:53:52  
Amplitude and Phase vs Time for J2015+3710.MULTI.1 CL # 3  
IF 3 CHAN 1 STK LL of J2015+3710.ICL001.3



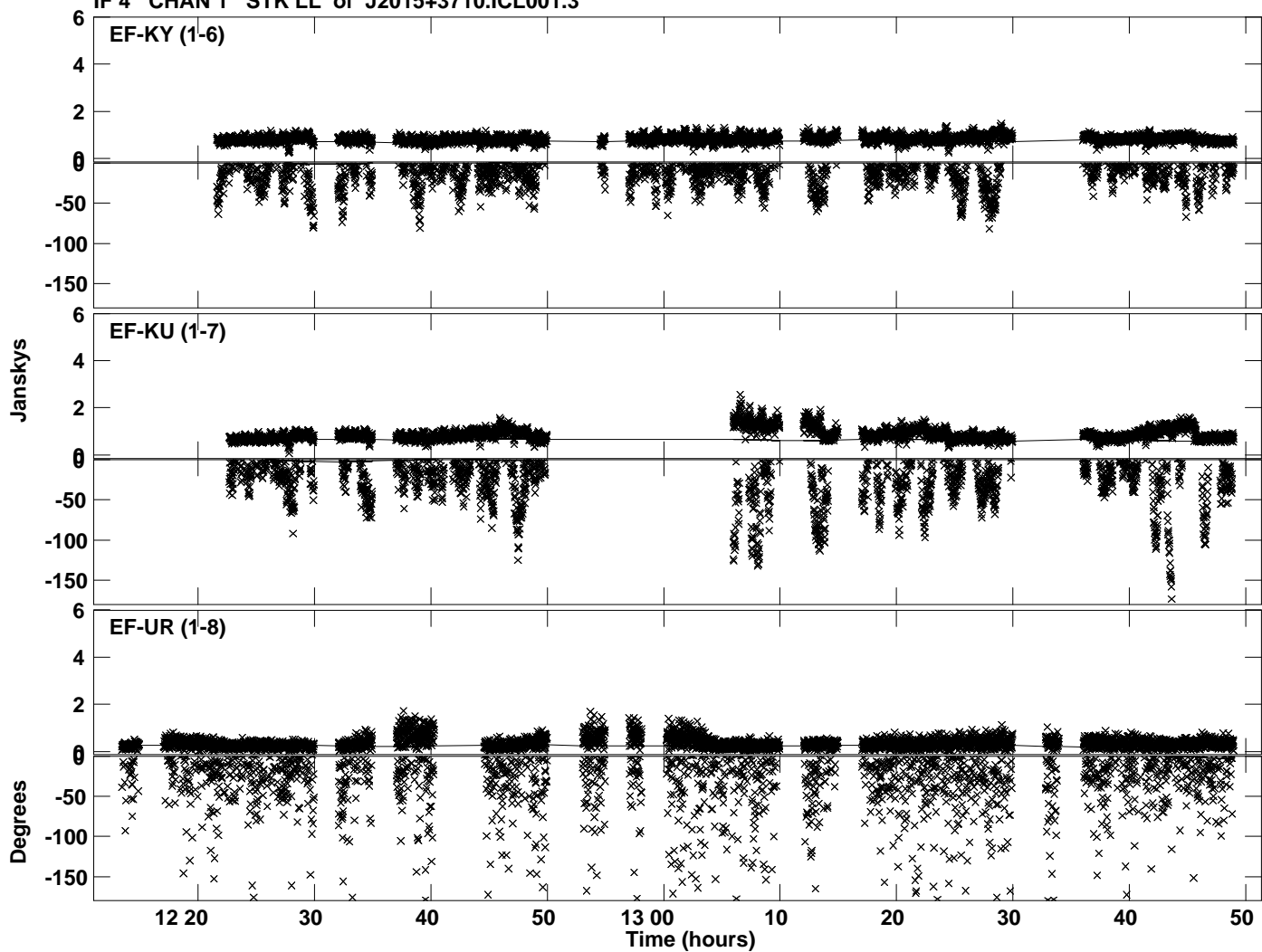
PLot file version 6 created 17-JAN-2022 20:53:53  
Amplitude andPhase vs Time for J2015+3710.MULTI.1 CL # 3  
IF 3 CHAN 1 STK LL of J2015+3710.ICL001.3



Plot file version 7 created 17-JAN-2022 20:53:53  
Amplitude and Phase vs Time for J2015+3710.MULTI.1 CL # 3  
IF 4 CHAN 1 STK LL of J2015+3710.ICL001.3

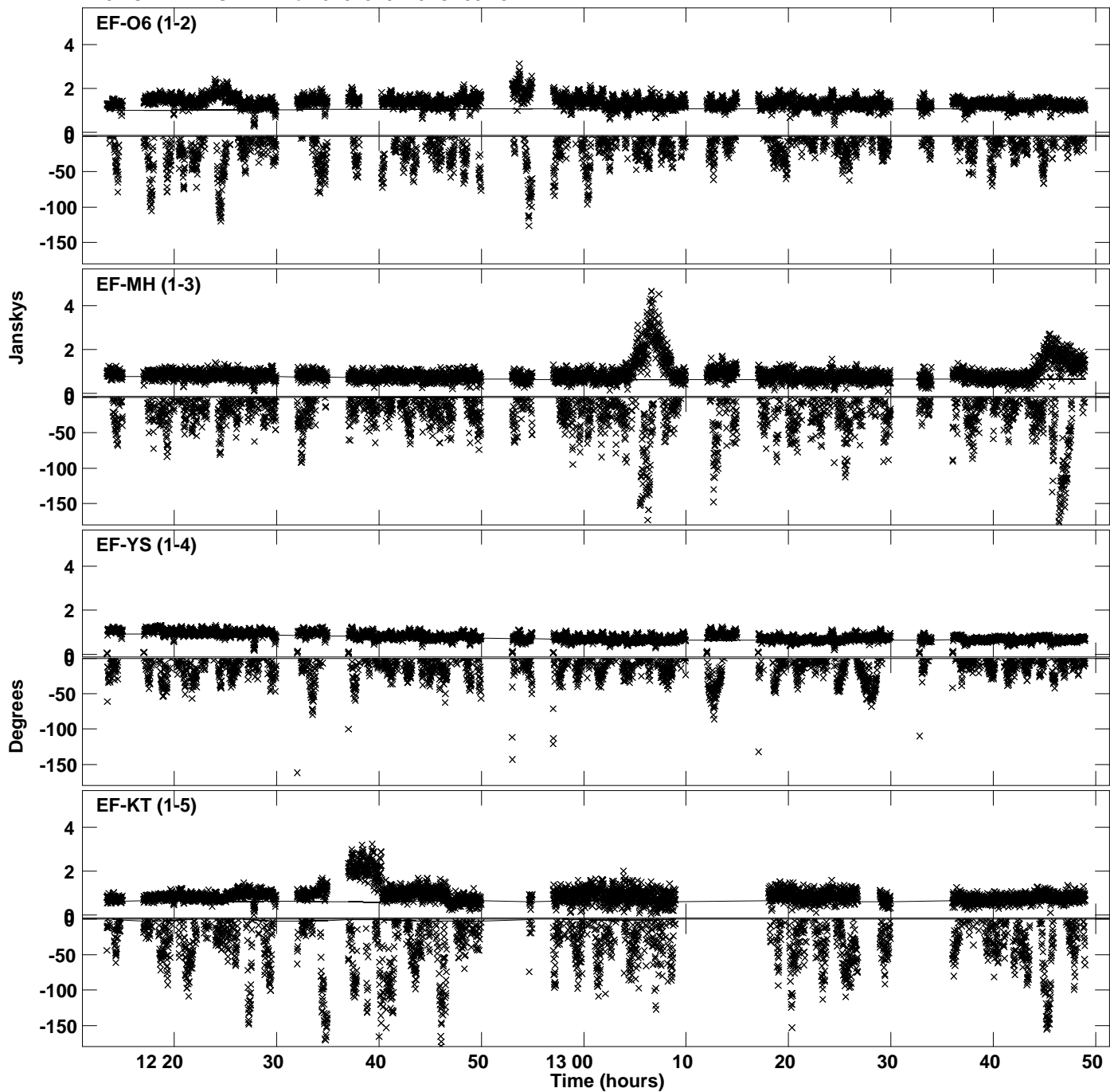


Plot file version 8 created 17-JAN-2022 20:53:53  
Amplitude andPhase vs Time for J2015+3710.MULTI.1 CL # 3  
IF 4 CHAN 1 STK LL of J2015+3710.ICL001.3

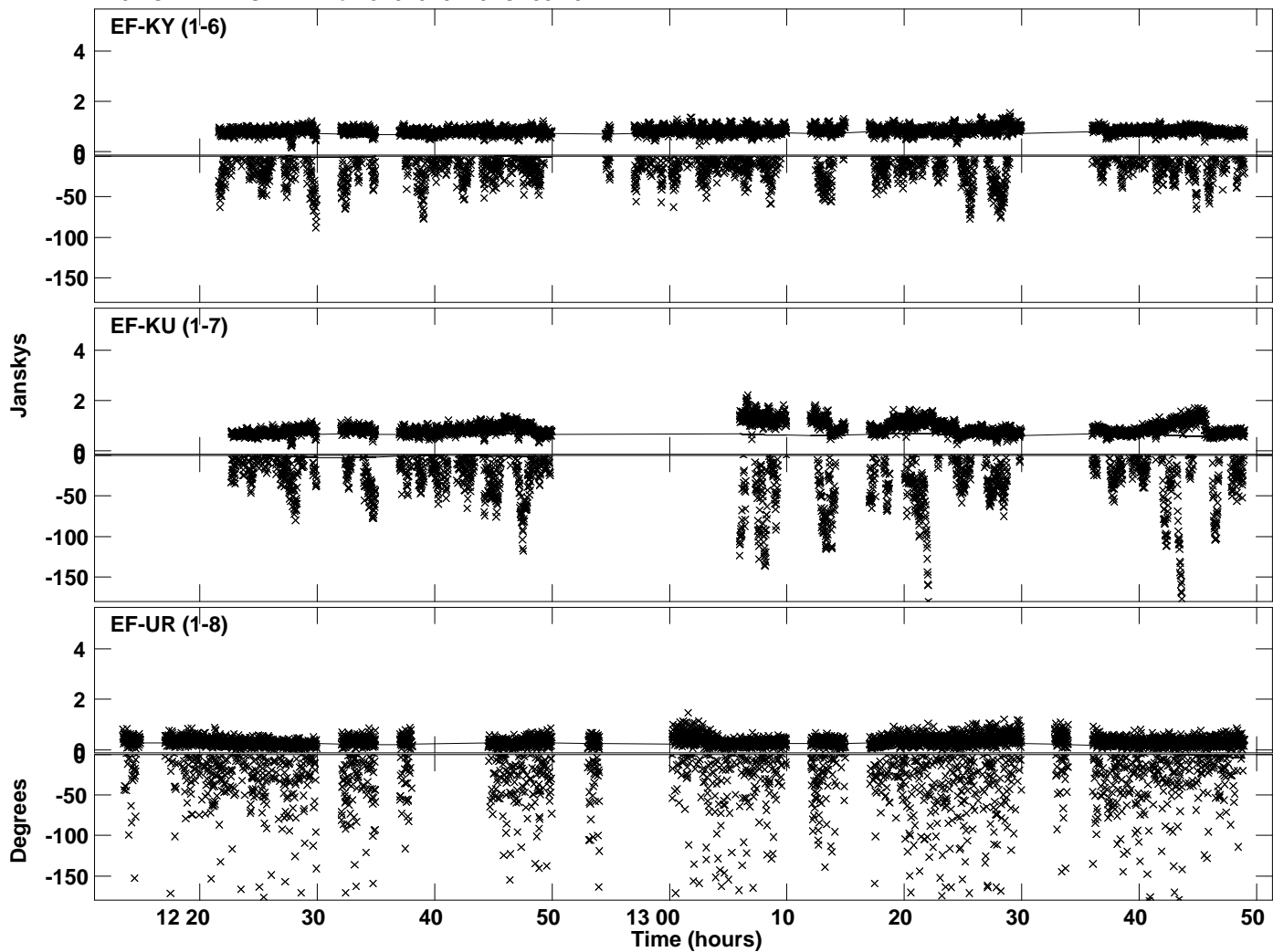




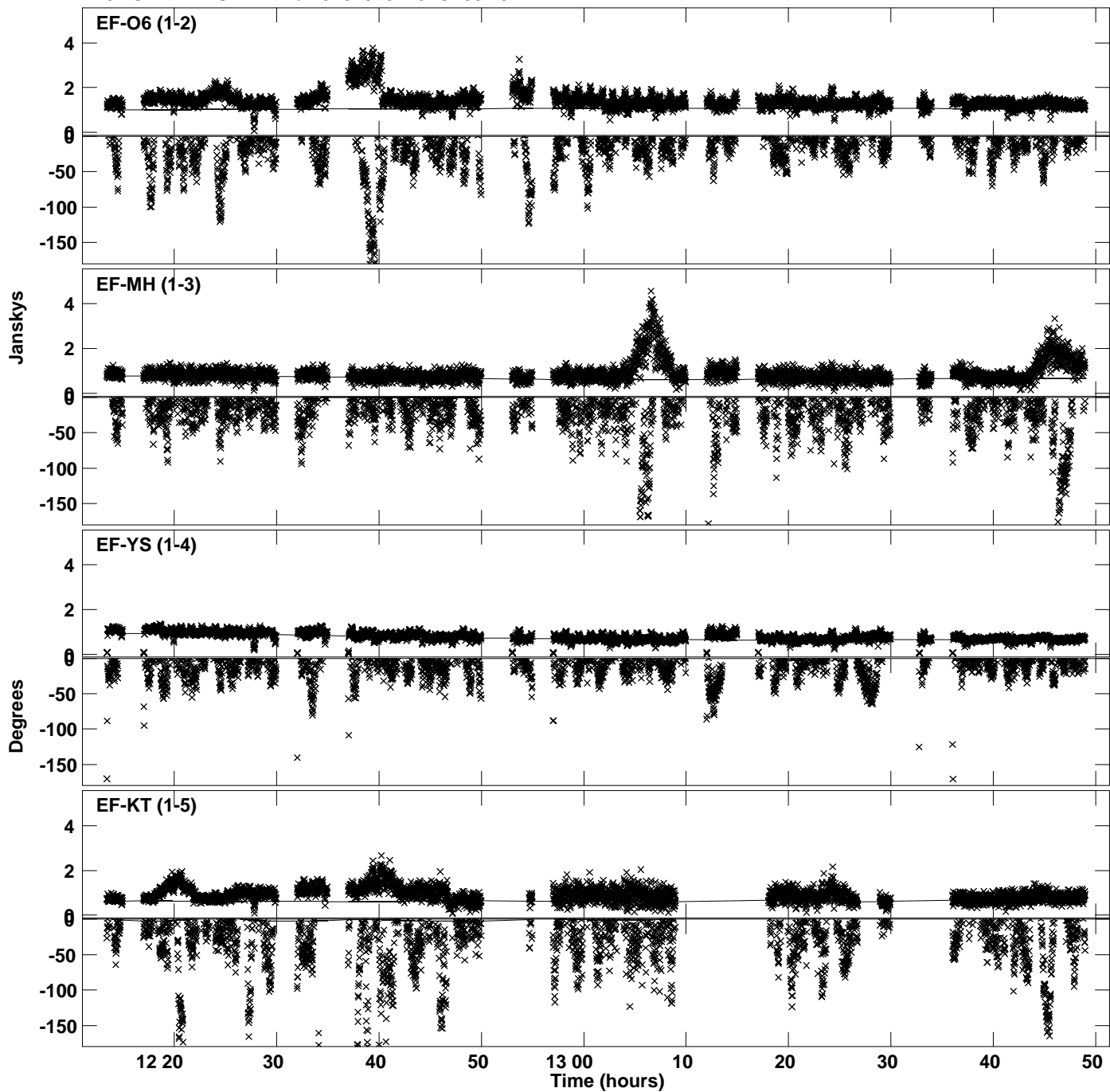
Plot file version 9 created 17-JAN-2022 20:53:54  
Amplitude and Phase vs Time for J2015+3710.MULTI.1 CL # 3  
IF 5 CHAN 1 STK LL of J2015+3710.ICL001.3



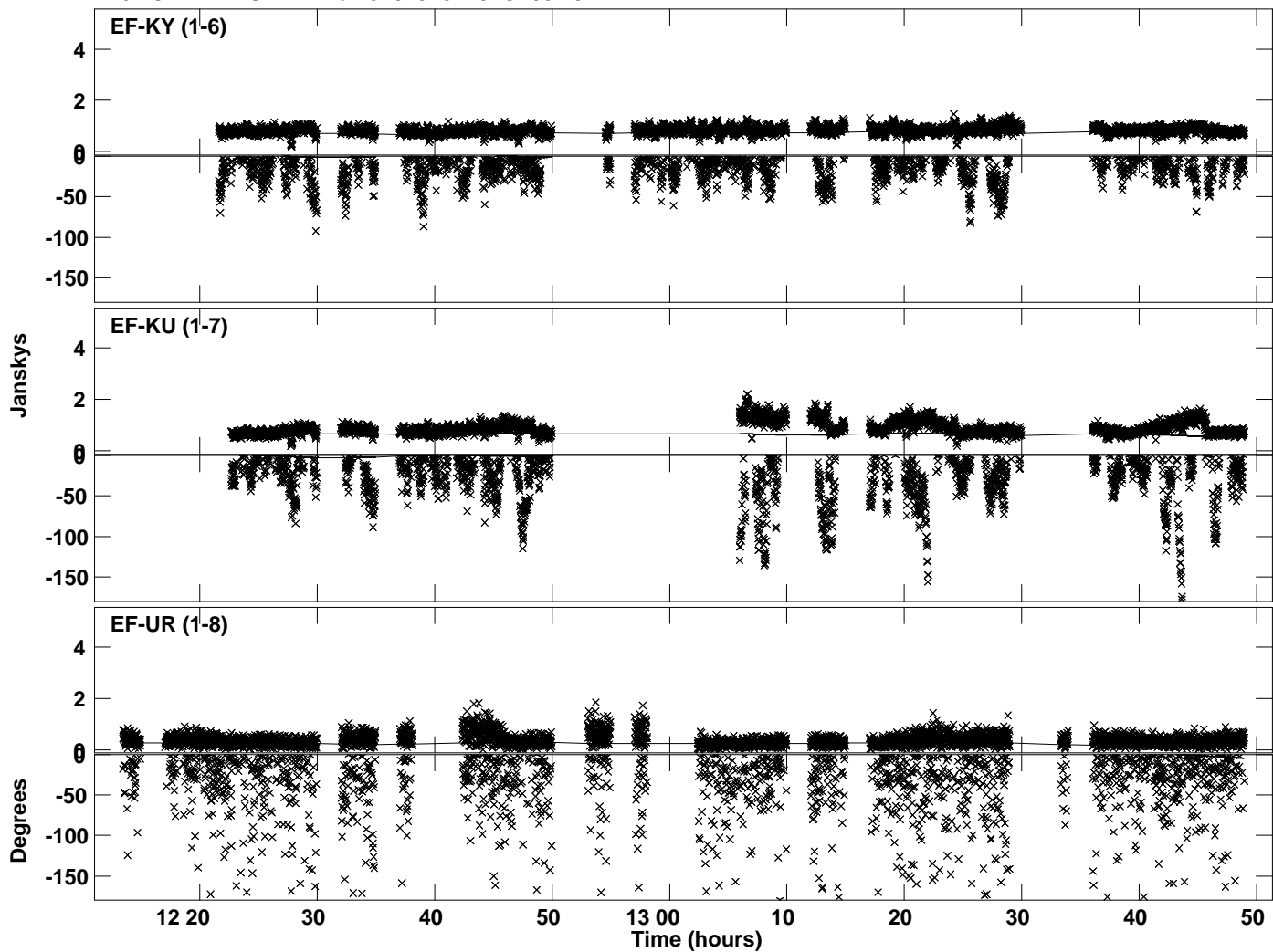
PLot file version 10 created 17-JAN-2022 20:53:54  
Amplitude andPhase vs Time for J2015+3710.MULTI.1 CL # 3  
IF 5 CHAN 1 STK LL of J2015+3710.ICL001.3



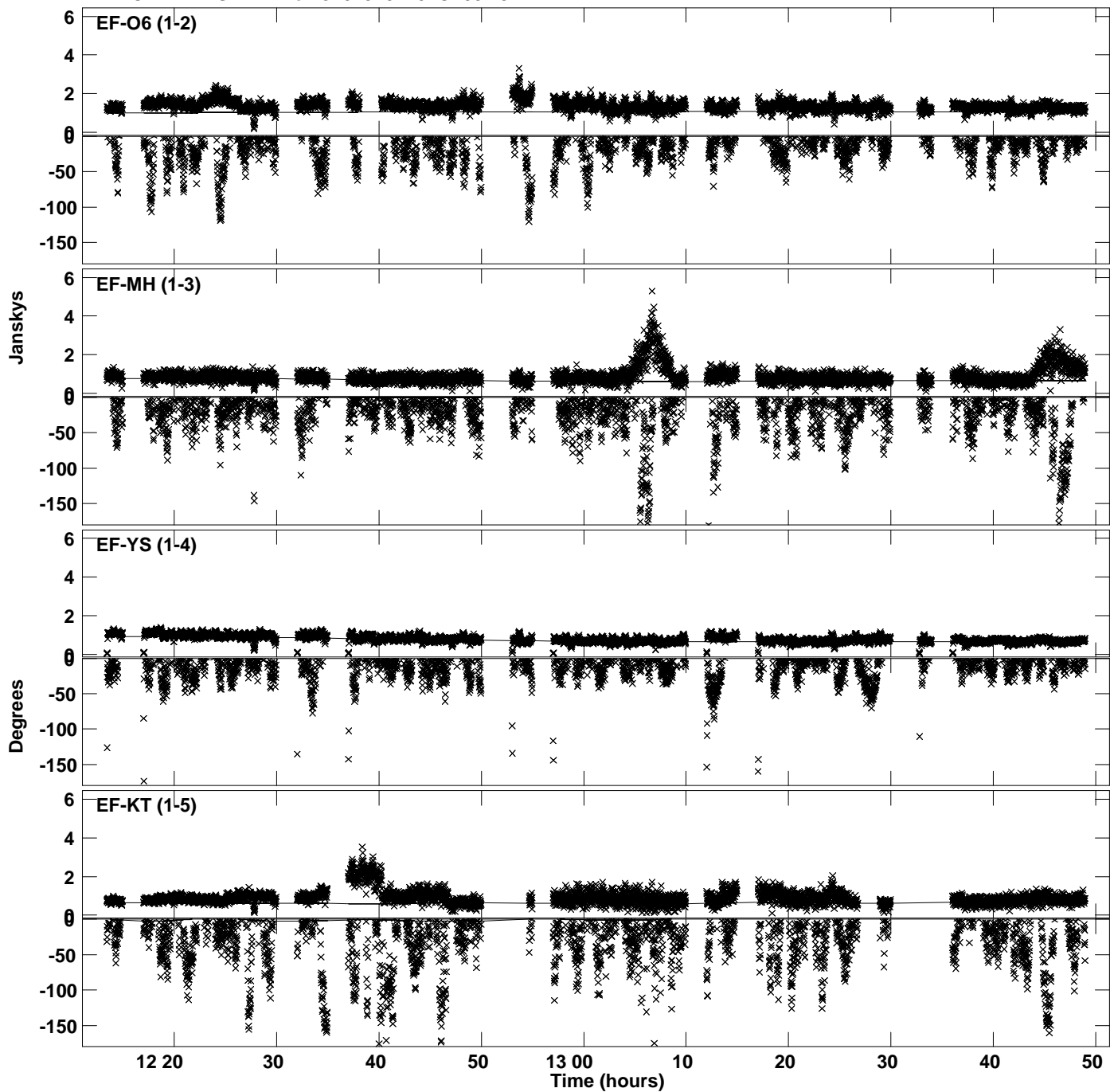
Plot file version 11 created 17-JAN-2022 20:53:55  
Amplitude and Phase vs Time for J2015+3710.MULTI.1 CL # 3  
IF 6 CHAN 1 STK LL of J2015+3710.ICL001.3



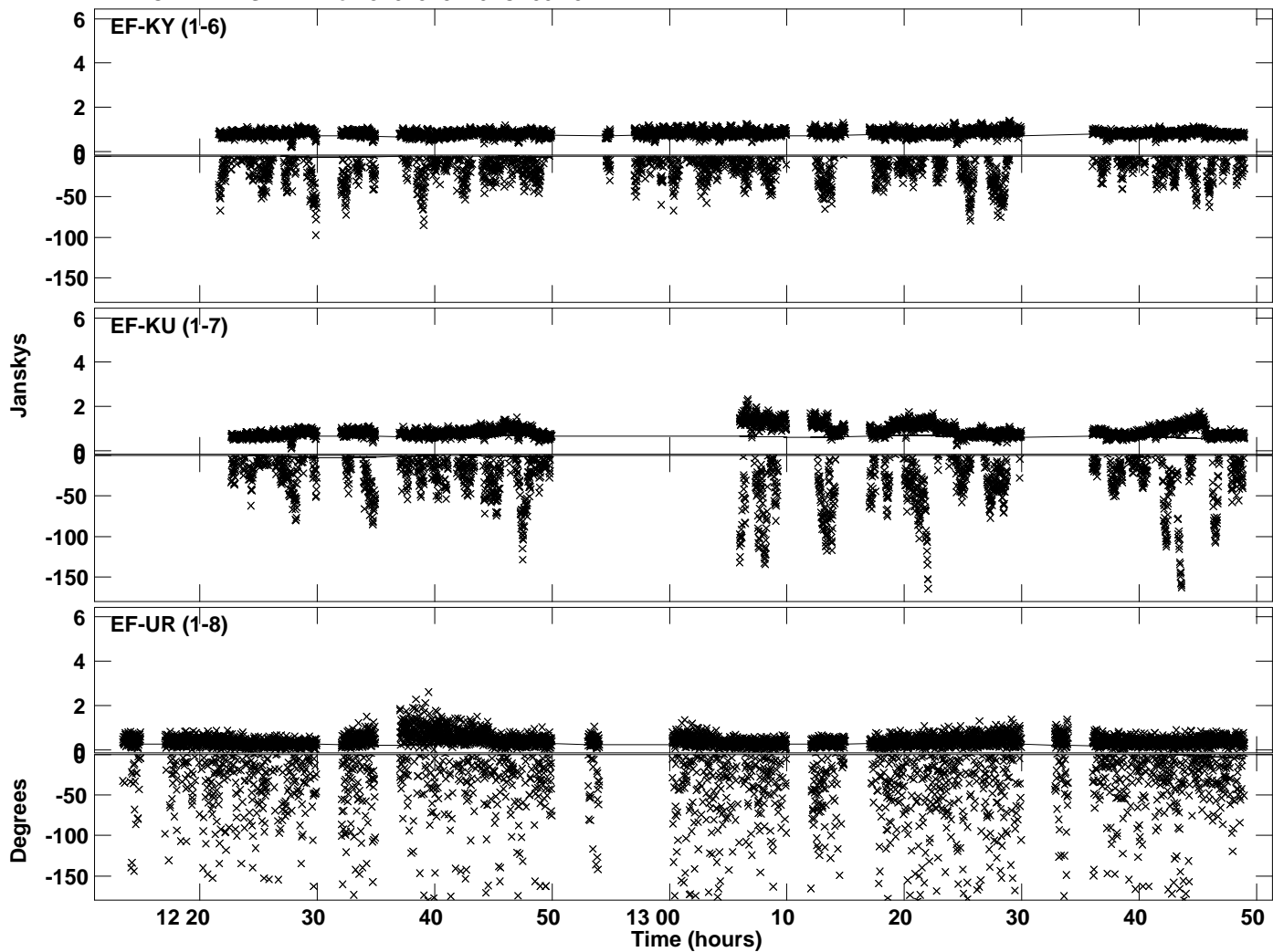
Plot file version 12 created 17-JAN-2022 20:53:55  
Amplitude and Phase vs Time for J2015+3710.MULTI.1 CL # 3  
IF 6 CHAN 1 STK LL of J2015+3710.ICL001.3



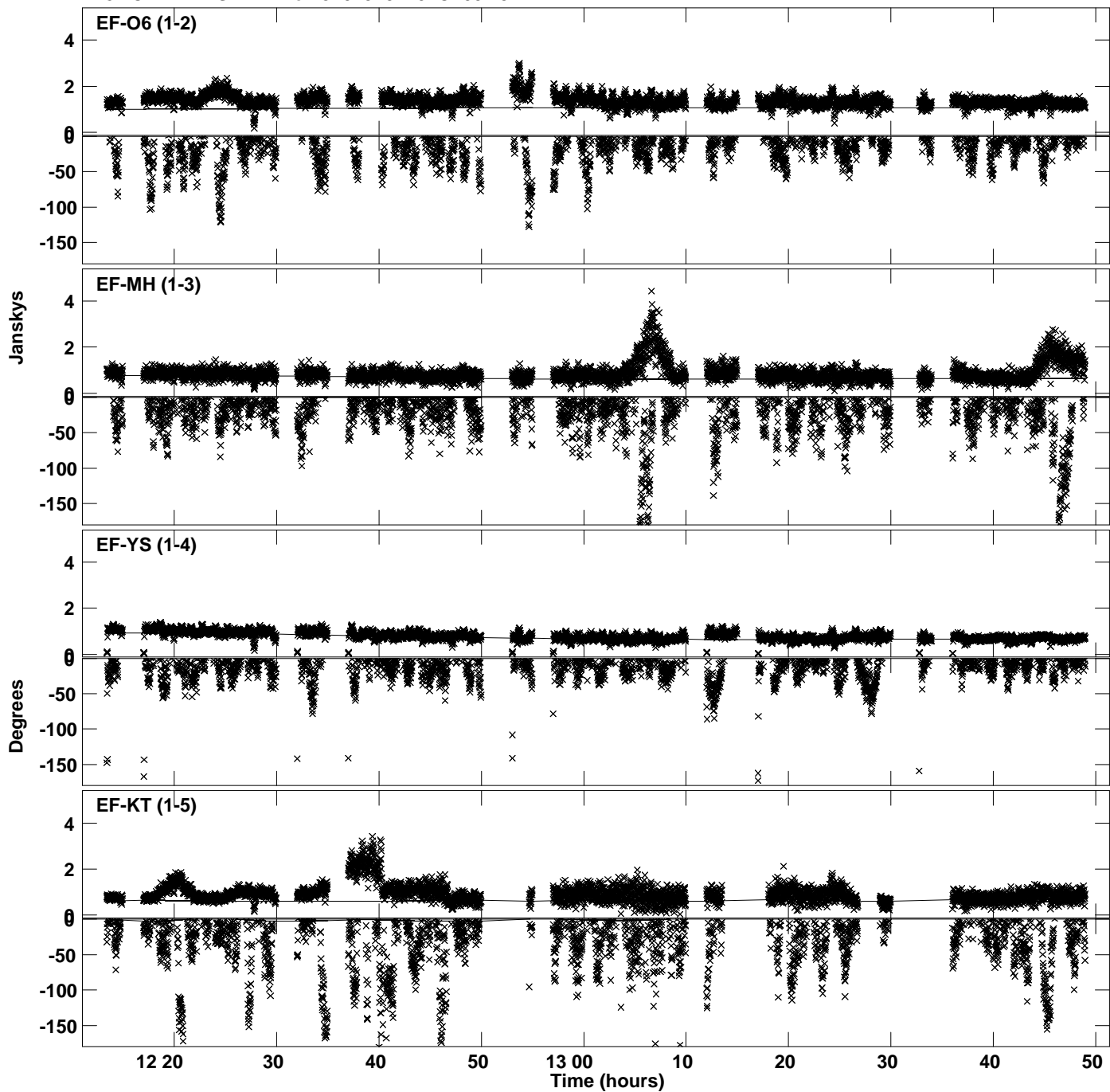
Plot file version 13 created 17-JAN-2022 20:53:56  
Amplitude and Phase vs Time for J2015+3710.MULTI.1 CL # 3  
IF 7 CHAN 1 STK LL of J2015+3710.ICL001.3



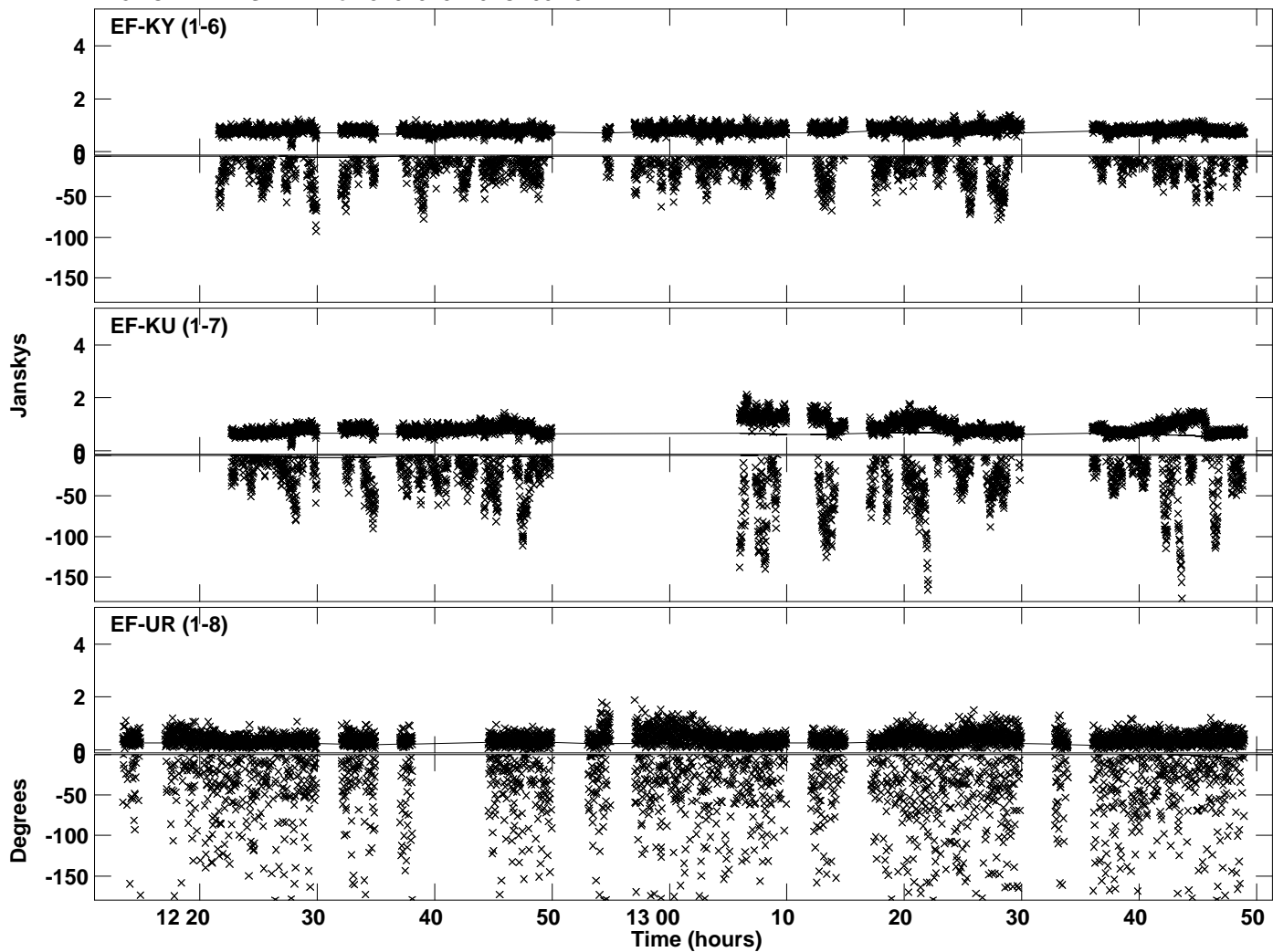
Plot file version 14 created 17-JAN-2022 20:53:56  
Amplitude andPhase vs Time for J2015+3710.MULTI.1 CL # 3  
IF 7 CHAN 1 STK LL of J2015+3710.ICL001.3



Plot file version 15 created 17-JAN-2022 20:53:57  
Amplitude andPhase vs Time for J2015+3710.MULTI.1 CL # 3  
IF 8 CHAN 1 STK LL of J2015+3710.ICL001.3

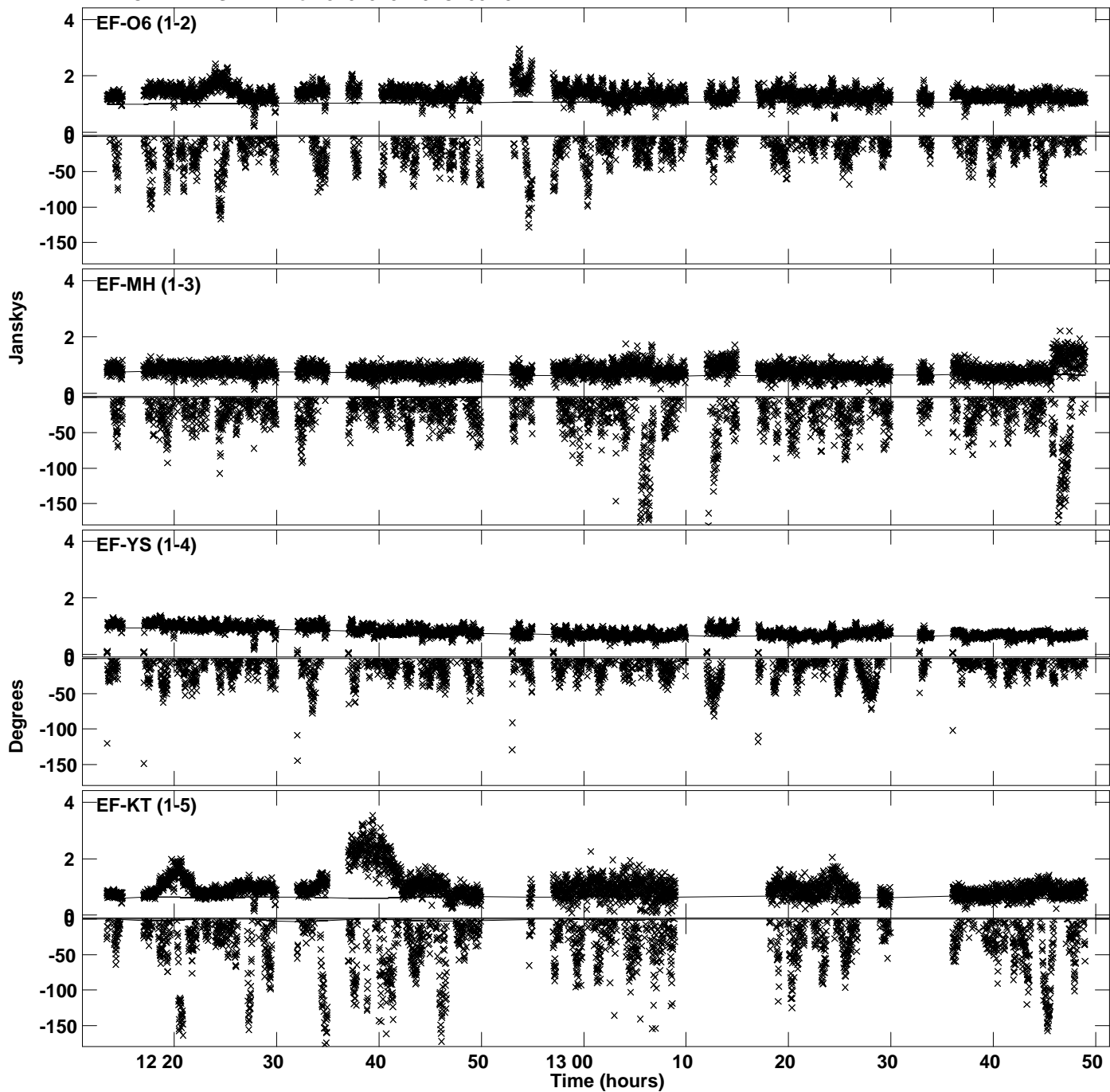


PLot file version 16 created 17-JAN-2022 20:53:57  
Amplitude andPhase vs Time for J2015+3710.MULTI.1 CL # 3  
IF 8 CHAN 1 STK LL of J2015+3710.ICL001.3

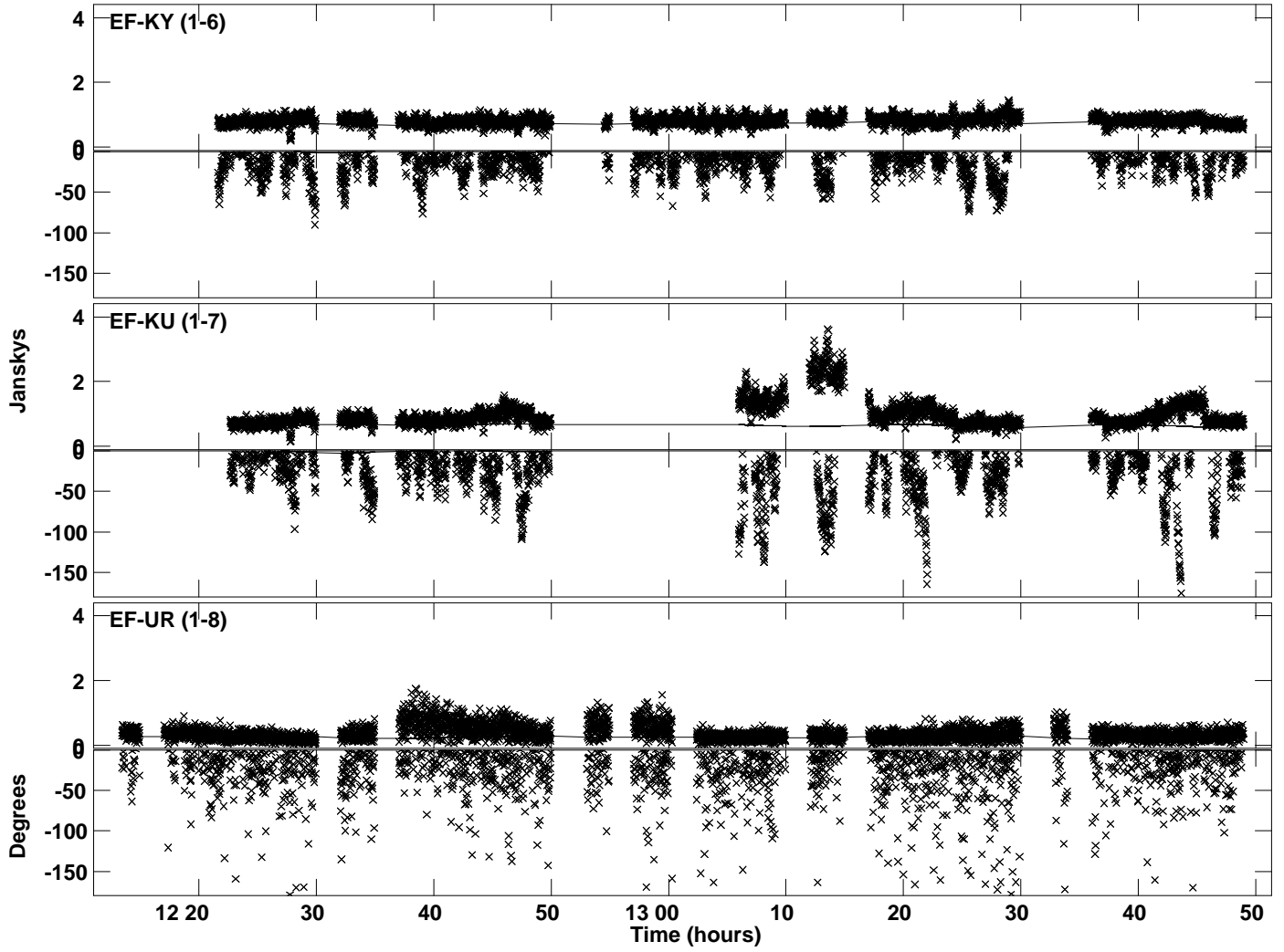




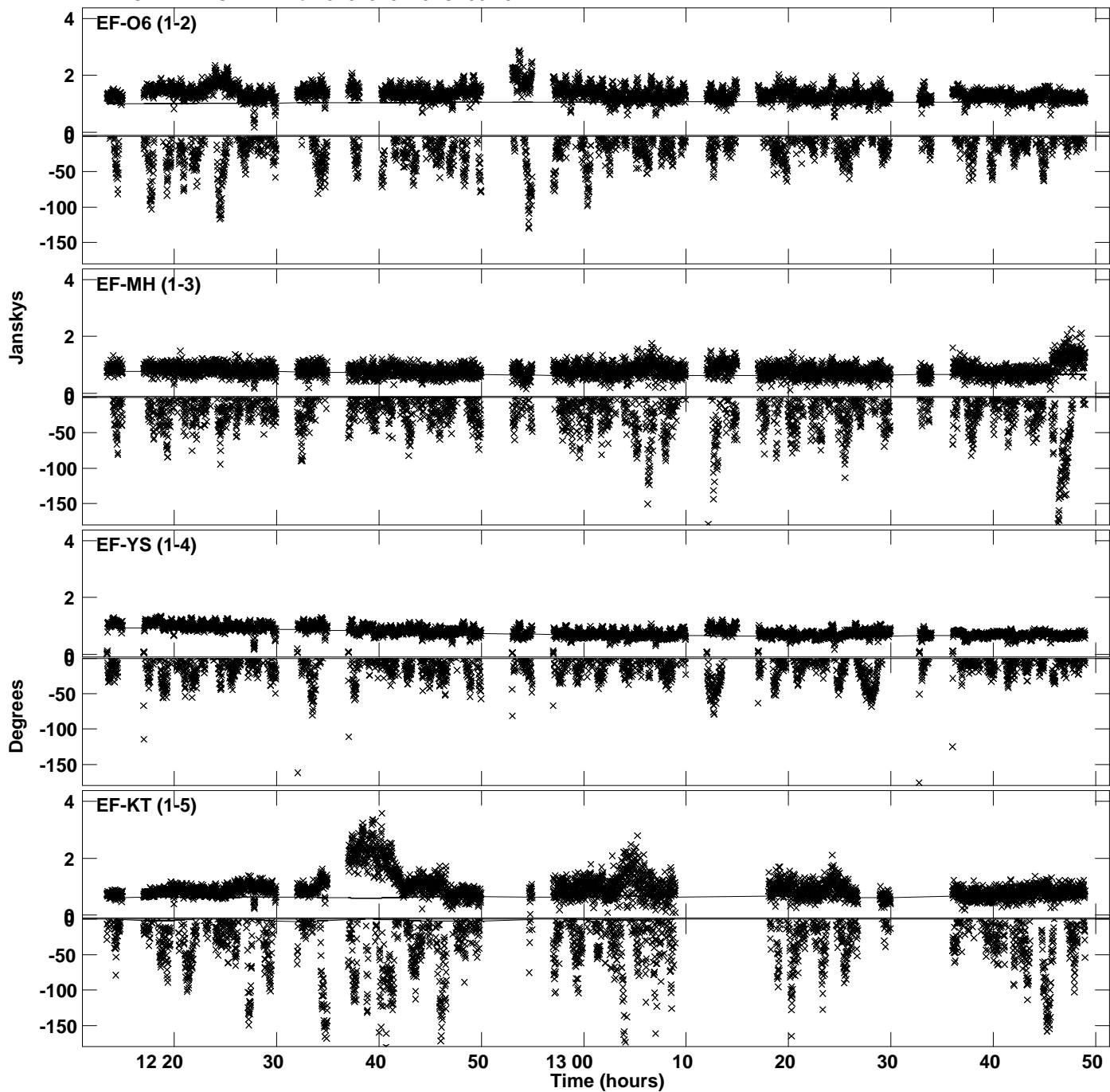
Plot file version 17 created 17-JAN-2022 20:53:58  
Amplitude and Phase vs Time for J2015+3710.MULTI.1 CL # 3  
IF 1 CHAN 1 STK RR of J2015+3710.ICL001.3



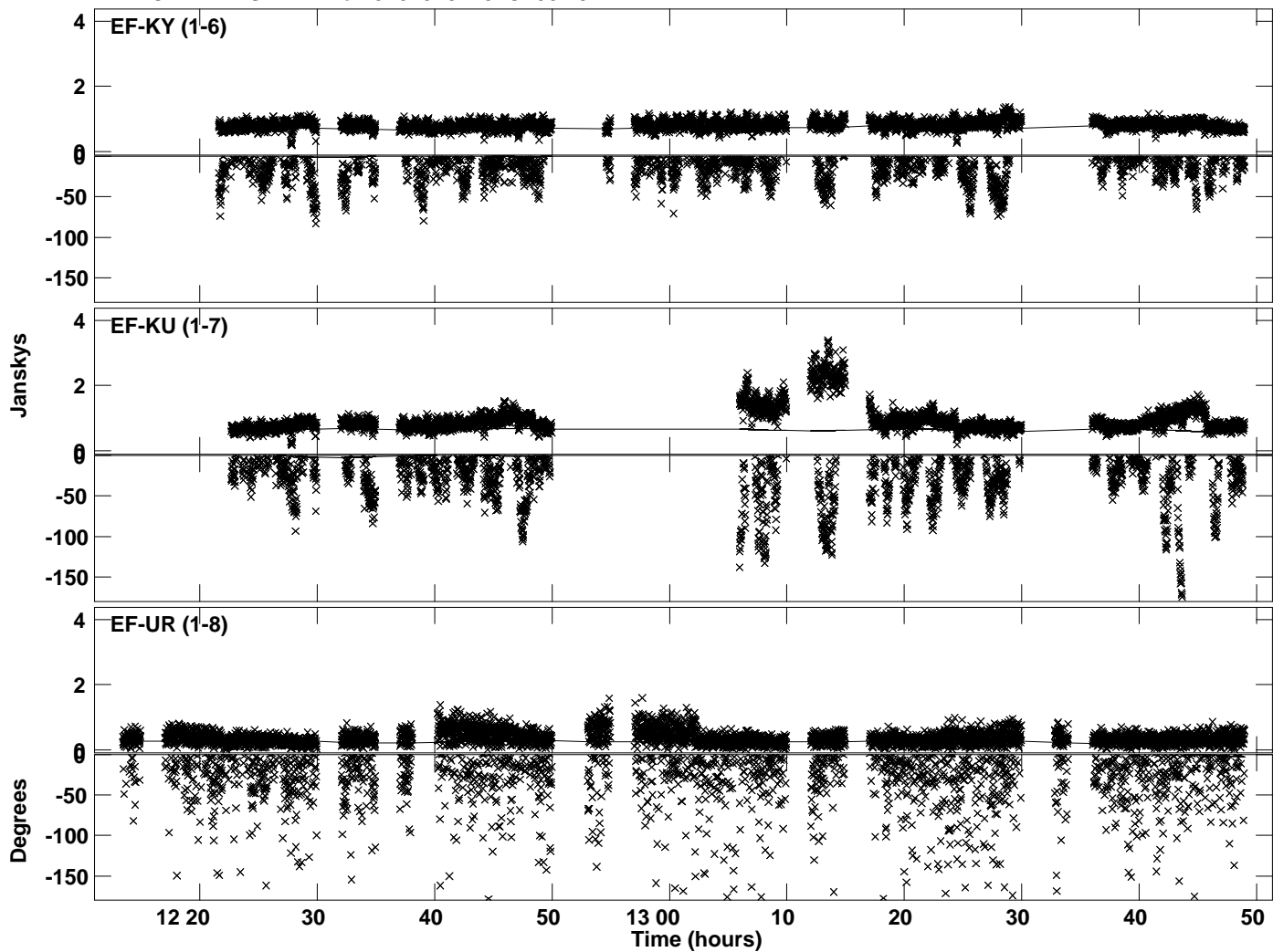
Plot file version 18 created 17-JAN-2022 20:53:58  
Amplitude andPhase vs Time for J2015+3710.MULTI.1 CL # 3  
IF 1 CHAN 1 STK RR of J2015+3710.ICL001.3



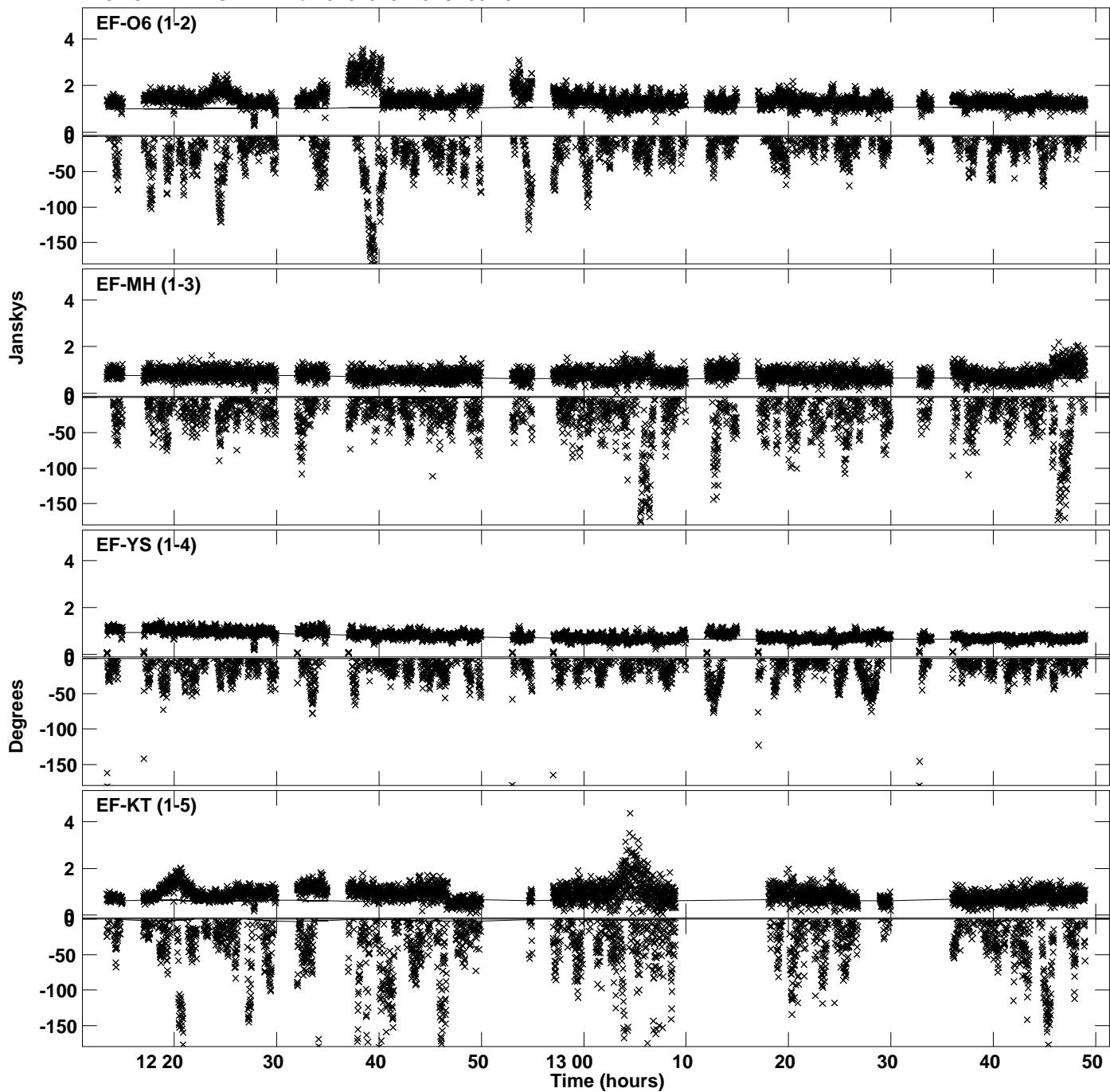
Plot file version 19 created 17-JAN-2022 20:53:59  
Amplitude and Phase vs Time for J2015+3710.MULTI.1 CL # 3  
IF 2 CHAN 1 STK RR of J2015+3710.ICL001.3



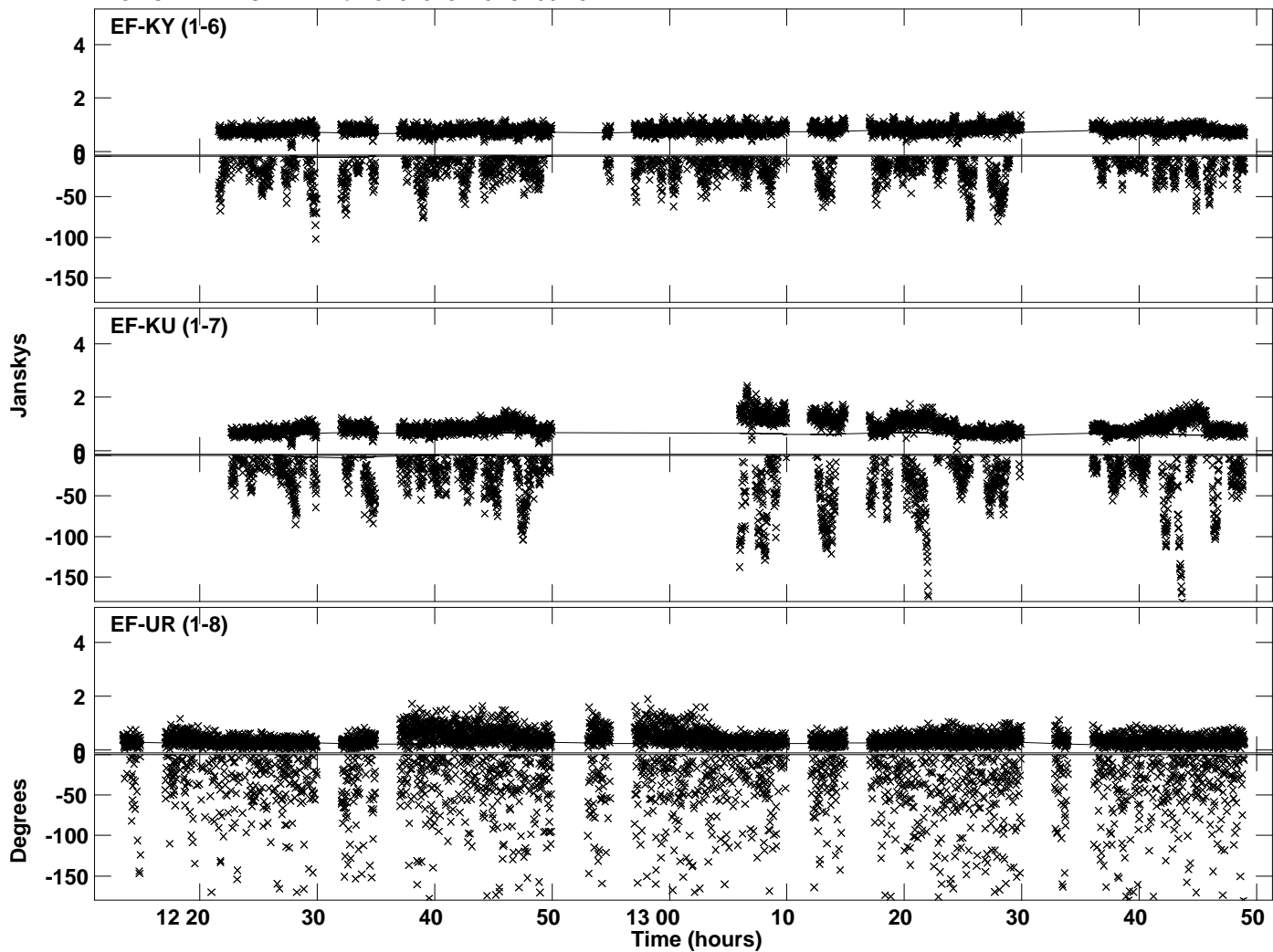
Plot file version 20 created 17-JAN-2022 20:53:59  
Amplitude andPhase vs Time for J2015+3710.MULTI.1 CL # 3  
IF 2 CHAN 1 STK RR of J2015+3710.ICL001.3



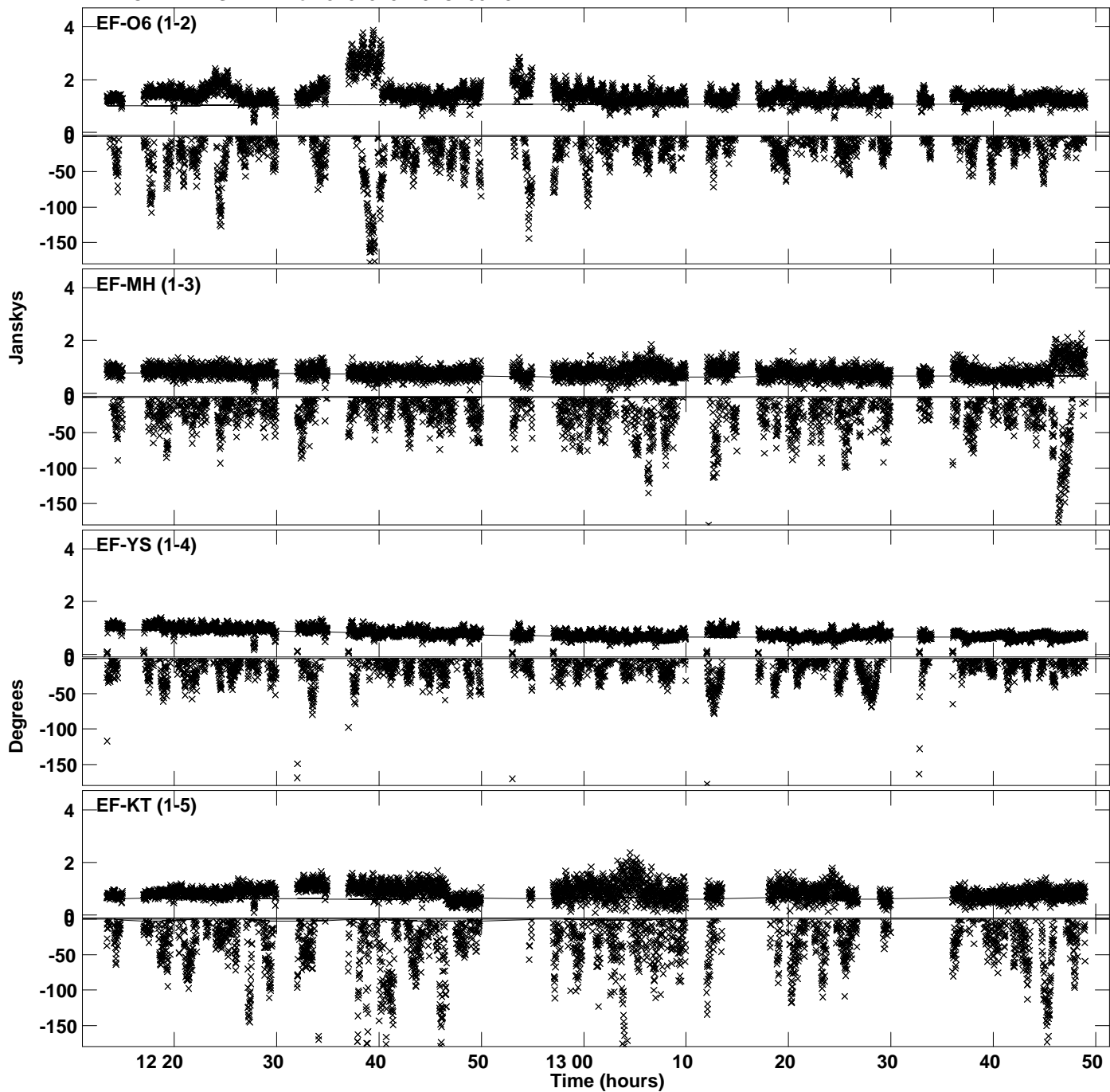
PLot file version 21 created 17-JAN-2022 20:54:00  
Amplitude andPhase vs Time for J2015+3710.MULTI.1 CL # 3  
IF 3 CHAN 1 STK RR of J2015+3710.ICL001.3



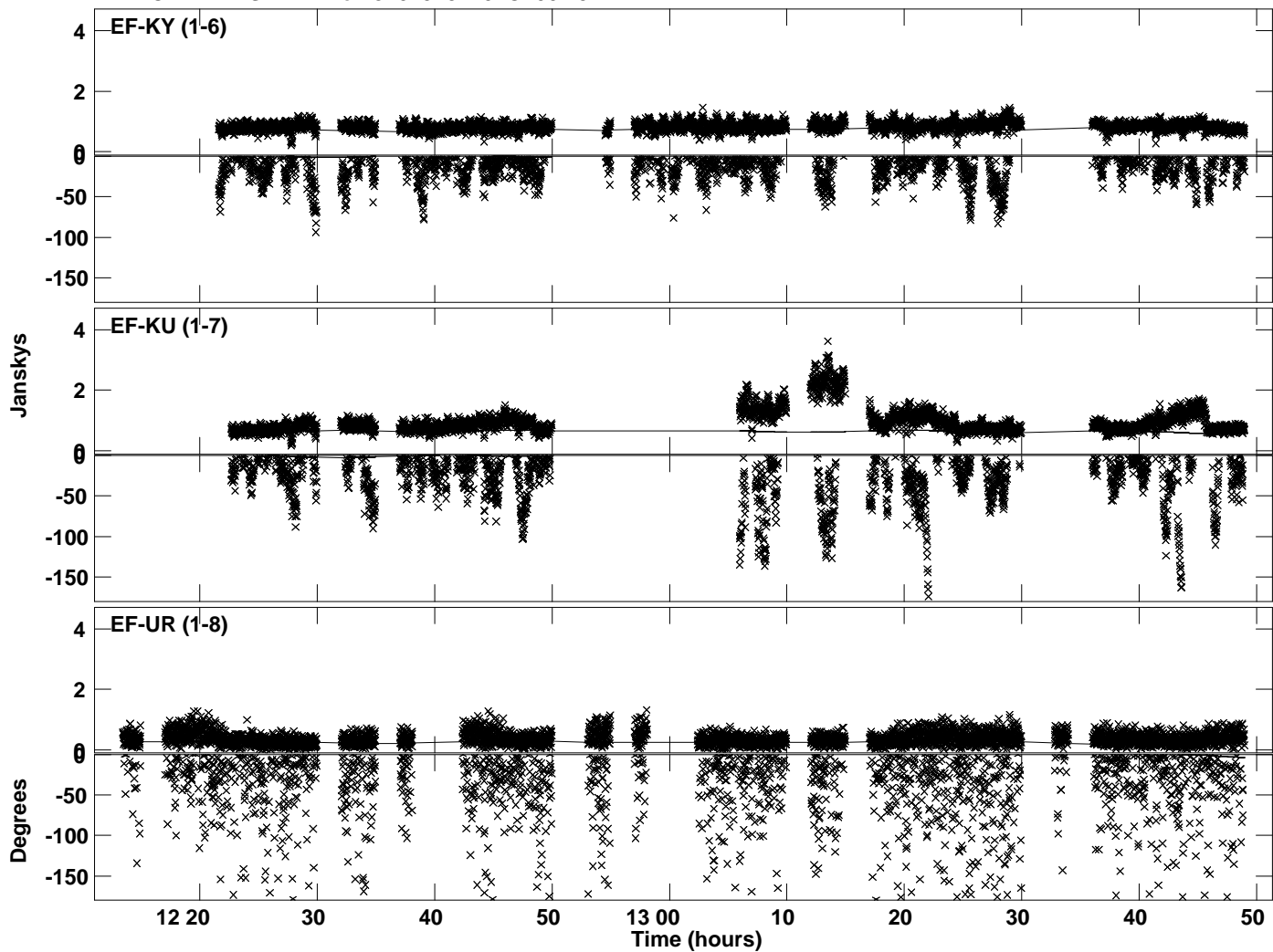
Plot file version 22 created 17-JAN-2022 20:54:00  
Amplitude andPhase vs Time for J2015+3710.MULTI.1 CL # 3  
IF 3 CHAN 1 STK RR of J2015+3710.ICL001.3



Plot file version 23 created 17-JAN-2022 20:54:01  
Amplitude andPhase vs Time for J2015+3710.MULTI.1 CL # 3  
IF 4 CHAN 1 STK RR of J2015+3710.ICL001.3

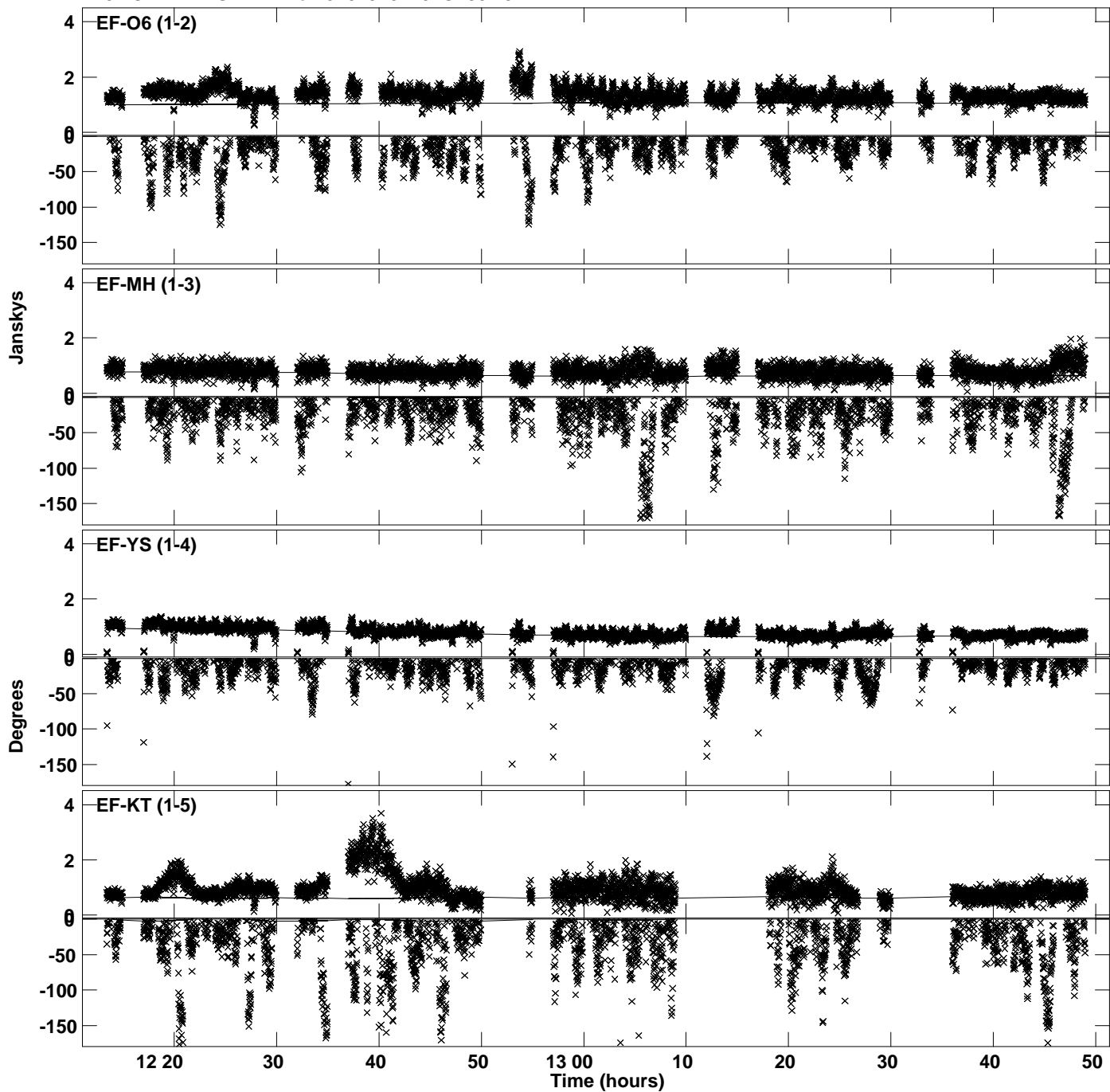


Plot file version 24 created 17-JAN-2022 20:54:01  
Amplitude andPhase vs Time for J2015+3710.MULTI.1 CL # 3  
IF 4 CHAN 1 STK RR of J2015+3710.ICL001.3

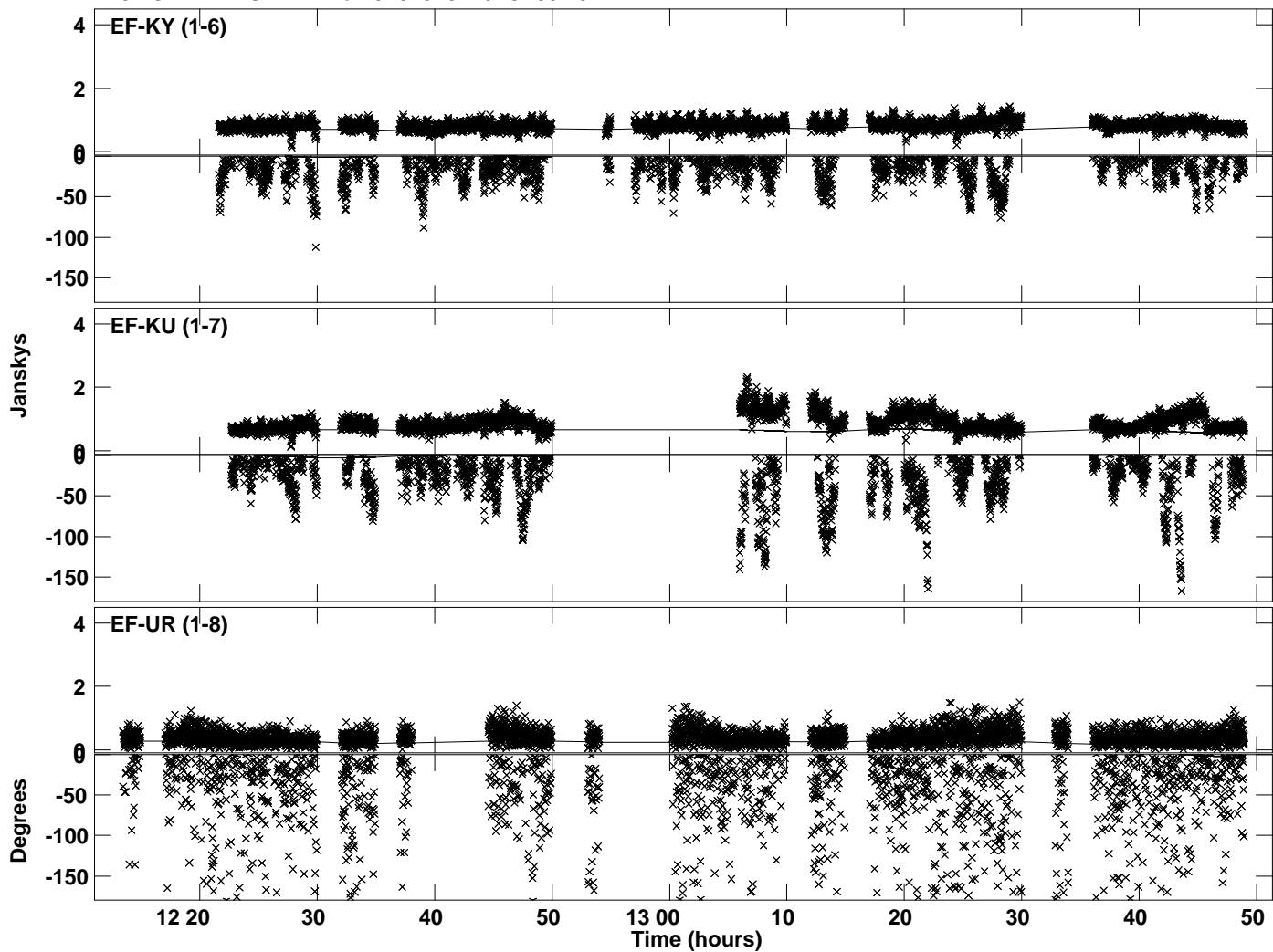




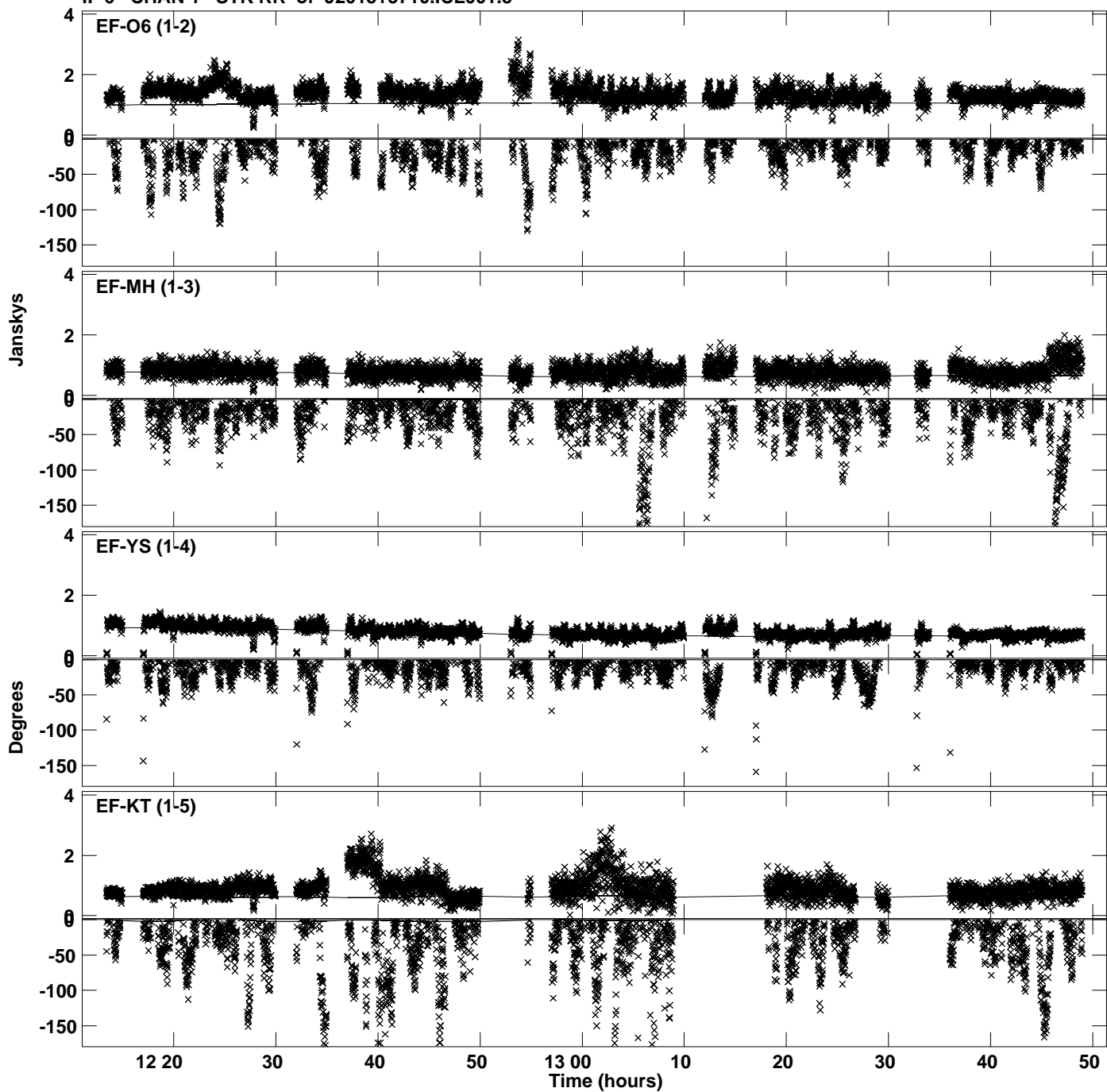
Plot file version 25 created 17-JAN-2022 20:54:02  
Amplitude and Phase vs Time for J2015+3710.MULTI.1 CL # 3  
IF 5 CHAN 1 STK RR of J2015+3710.ICL001.3



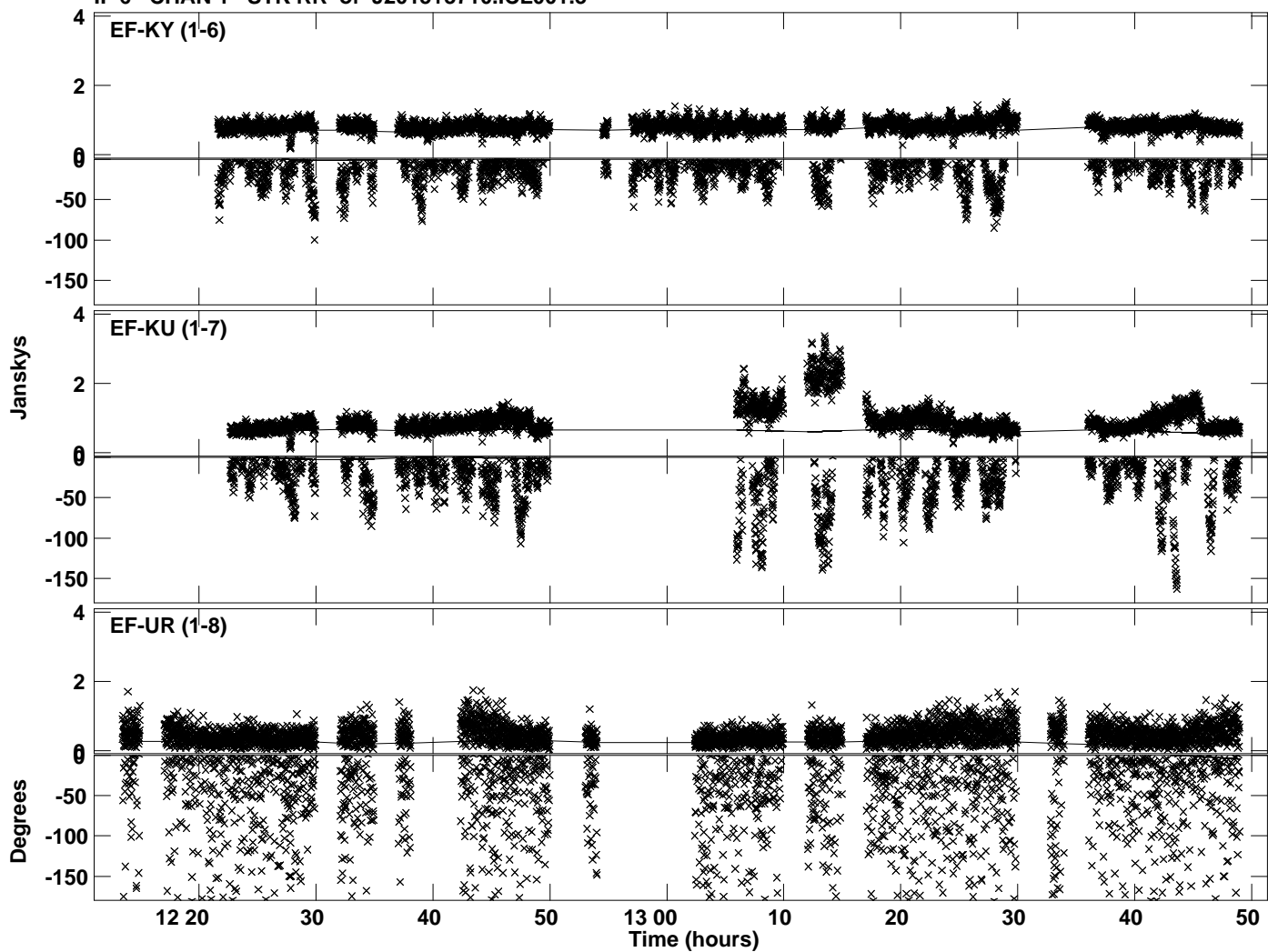
PLot file version 26 created 17-JAN-2022 20:54:02  
Amplitude andPhase vs Time for J2015+3710.MULTI.1 CL # 3  
IF 5 CHAN 1 STK RR of J2015+3710.ICL001.3



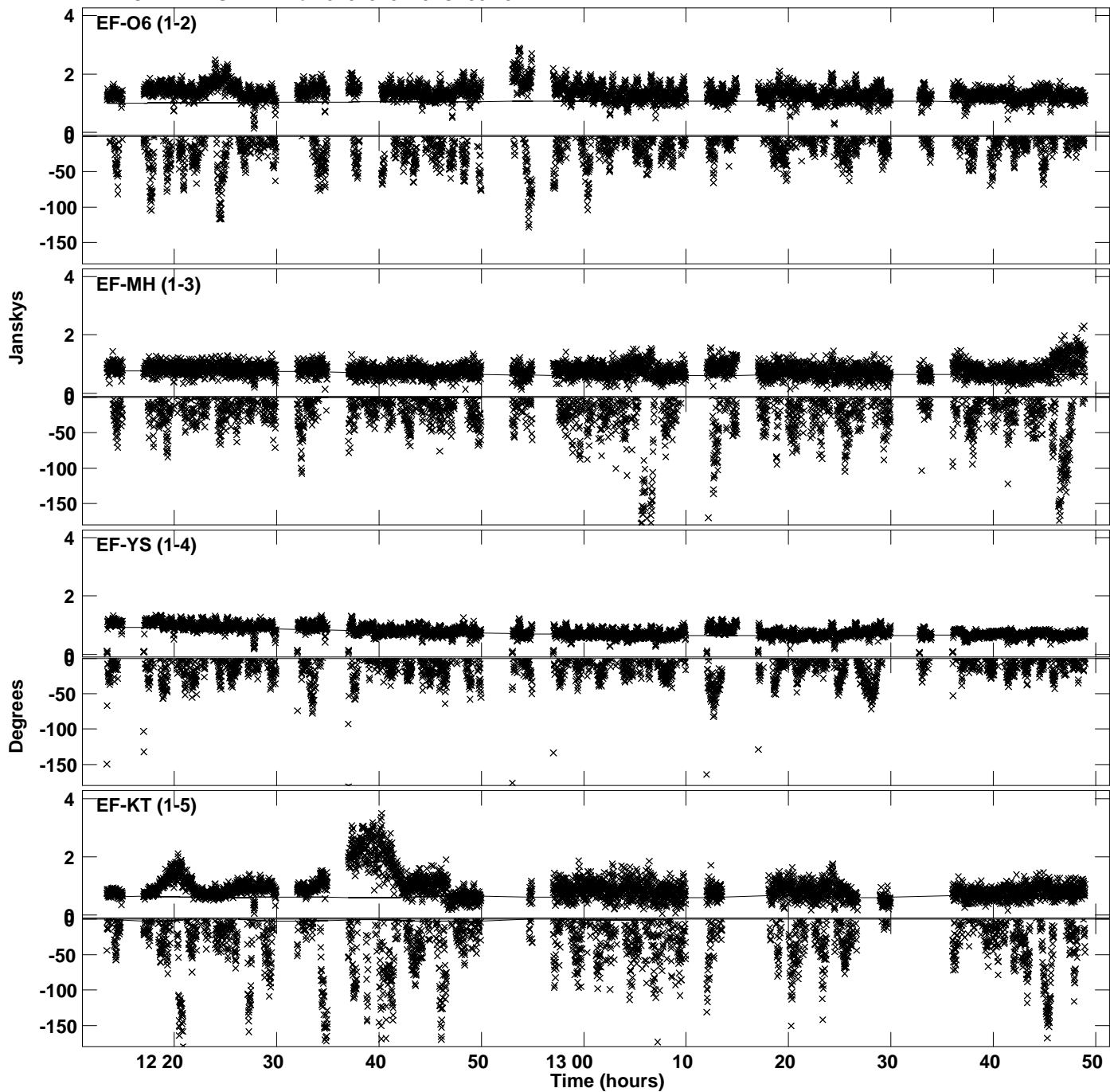
Plot file version 27 created 17-JAN-2022 20:54:03  
Amplitude and Phase vs Time for J2015+3710.MULTI.1 CL # 3  
IF 6 CHAN 1 STK RR of J2015+3710.ICL001.3



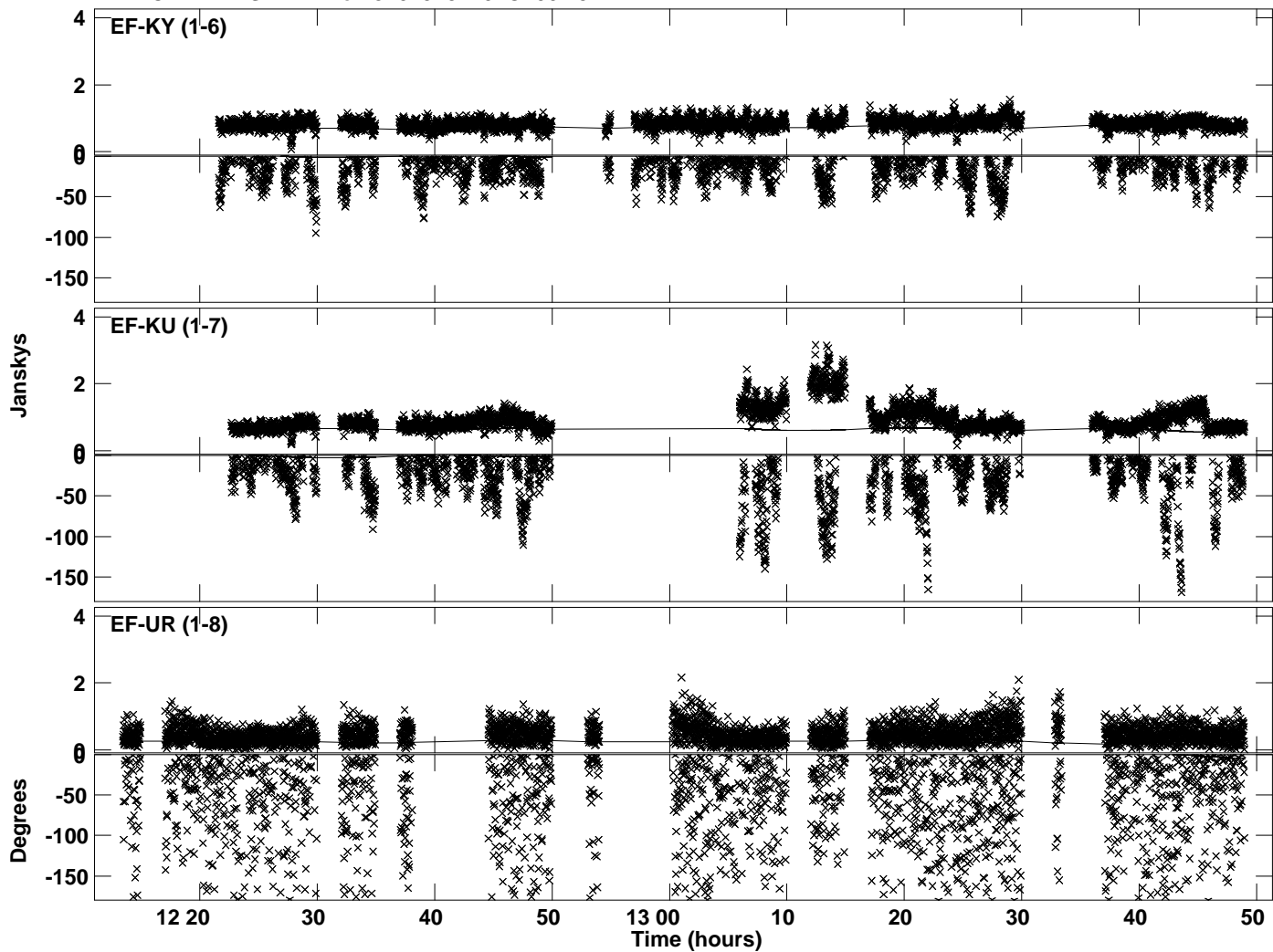
Plot file version 28 created 17-JAN-2022 20:54:03  
Amplitude andPhase vs Time for J2015+3710.MULTI.1 CL # 3  
IF 6 CHAN 1 STK RR of J2015+3710.ICL001.3



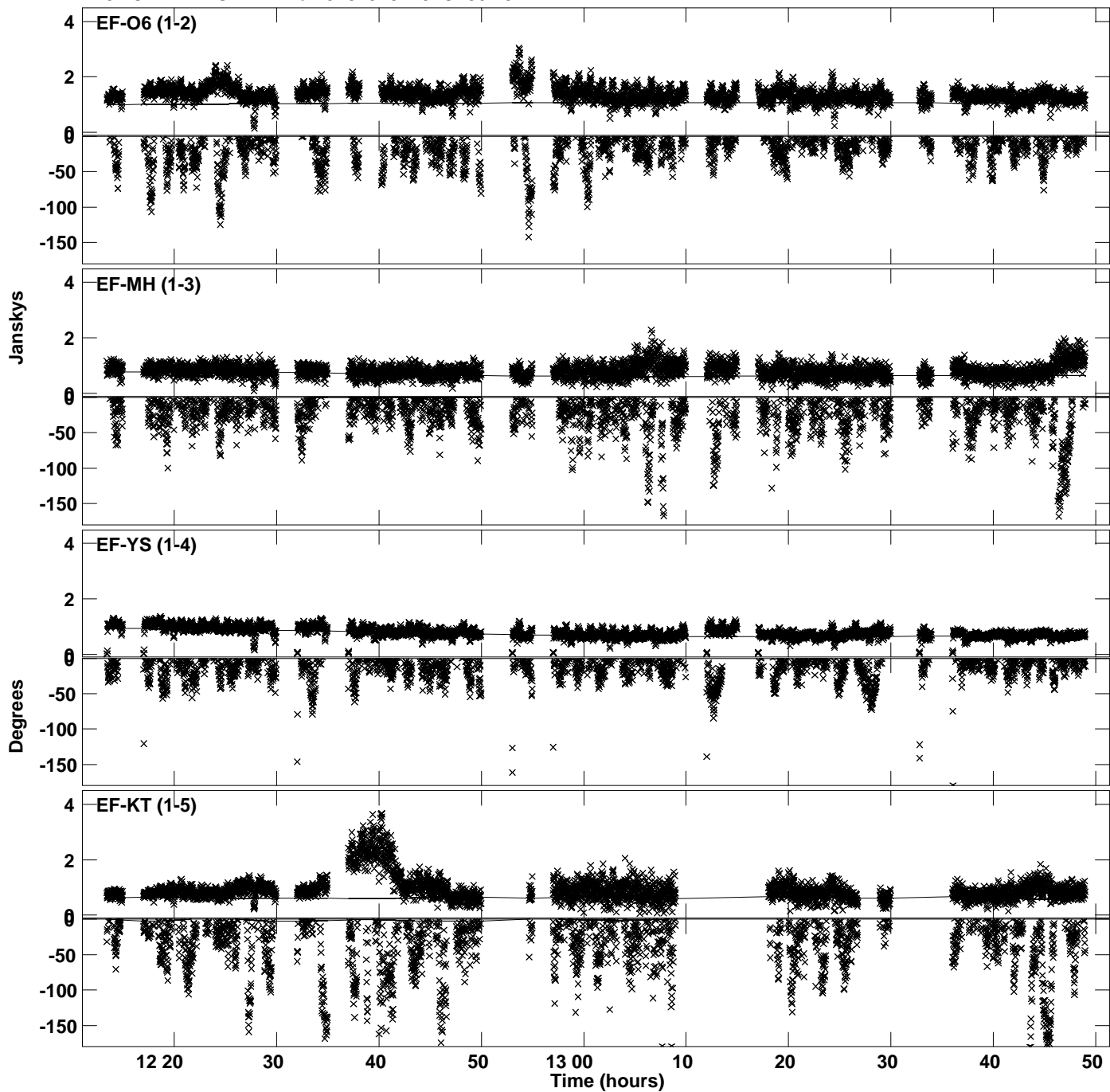
Plot file version 29 created 17-JAN-2022 20:54:04  
Amplitude andPhase vs Time for J2015+3710.MULTI.1 CL # 3  
IF 7 CHAN 1 STK RR of J2015+3710.ICL001.3



Plot file version 30 created 17-JAN-2022 20:54:04  
Amplitude andPhase vs Time for J2015+3710.MULTI.1 CL # 3  
IF 7 CHAN 1 STK RR of J2015+3710.ICL001.3



Plot file version 31 created 17-JAN-2022 20:54:05  
Amplitude and Phase vs Time for J2015+3710.MULTI.1 CL # 3  
IF 8 CHAN 1 STK RR of J2015+3710.ICL001.3



Plot file version 32 created 17-JAN-2022 20:54:05  
Amplitude andPhase vs Time for J2015+3710.MULTI.1 CL # 3  
IF 8 CHAN 1 STK RR of J2015+3710.ICL001.3

