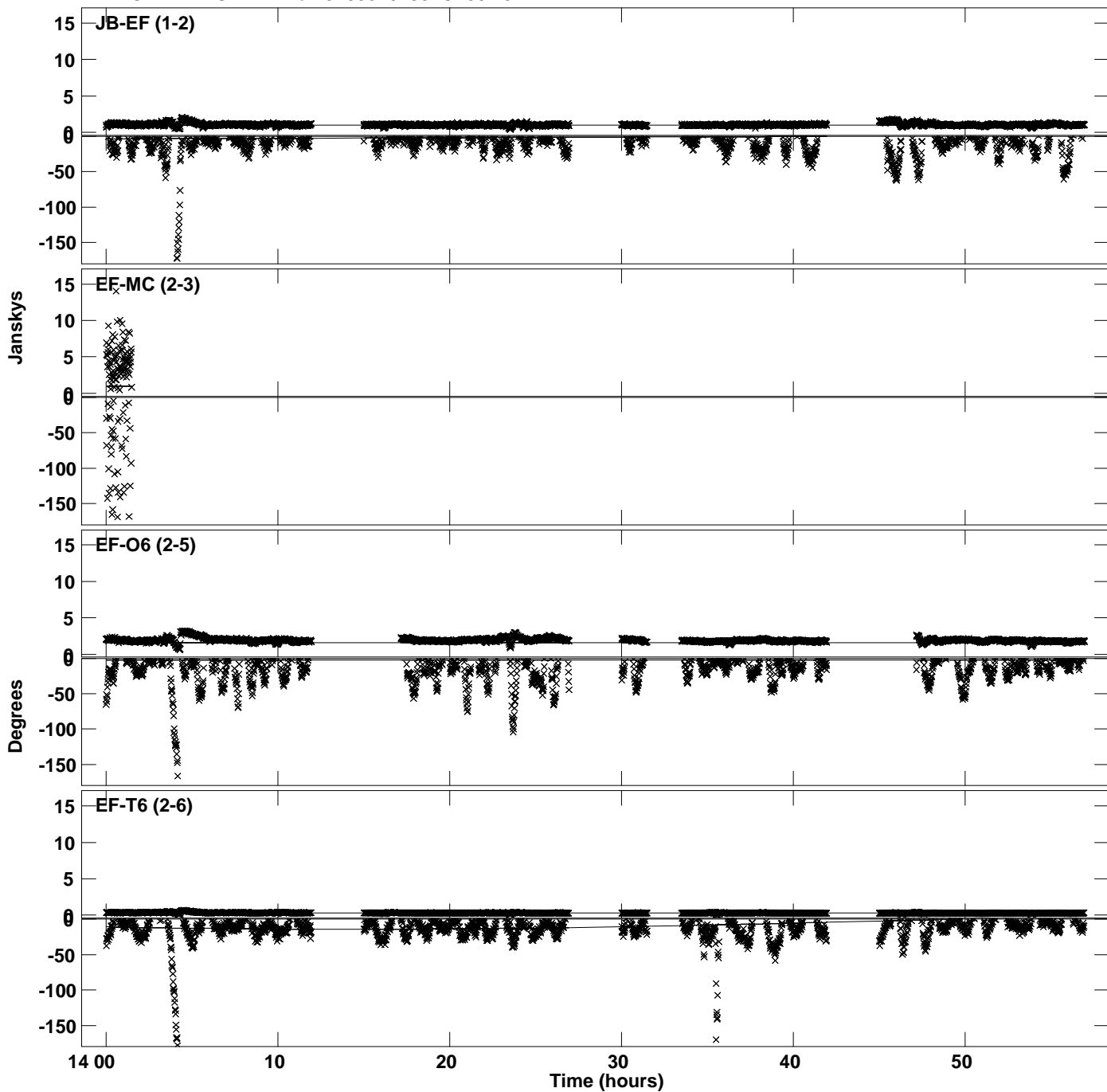
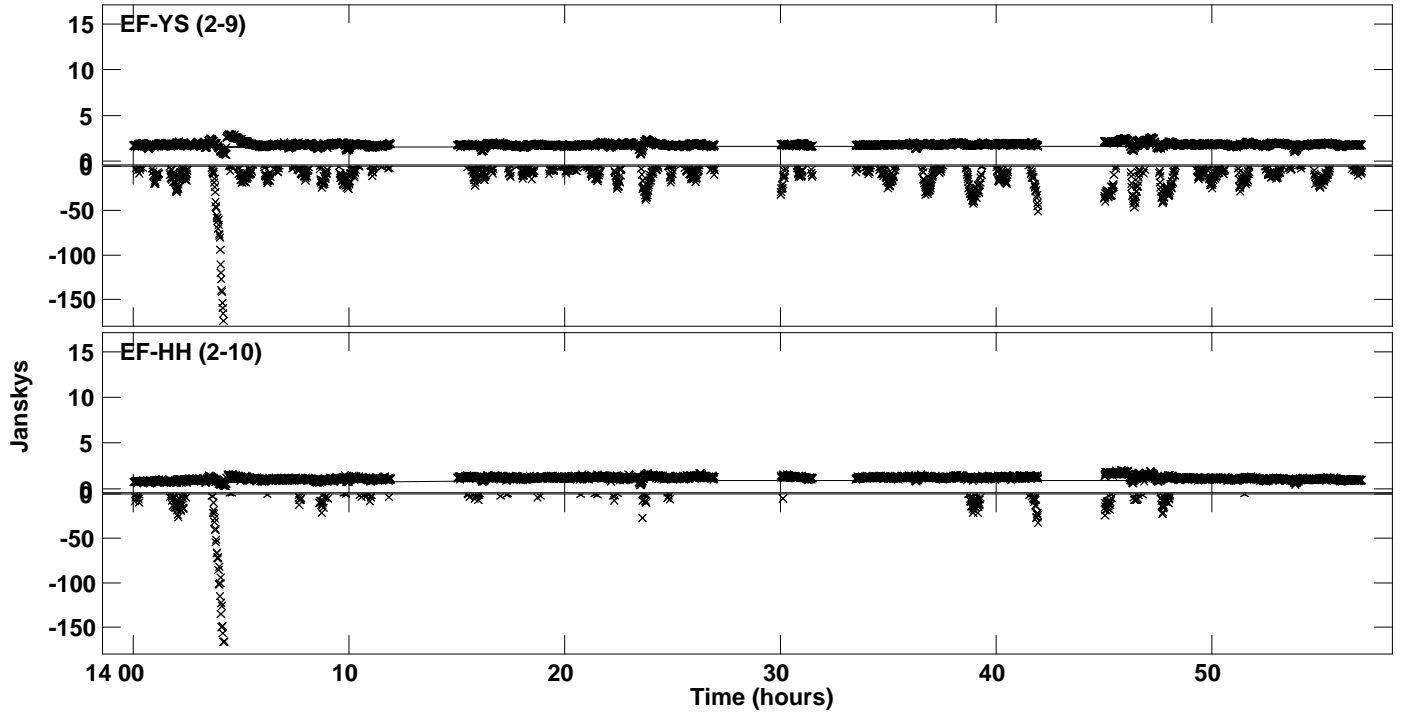


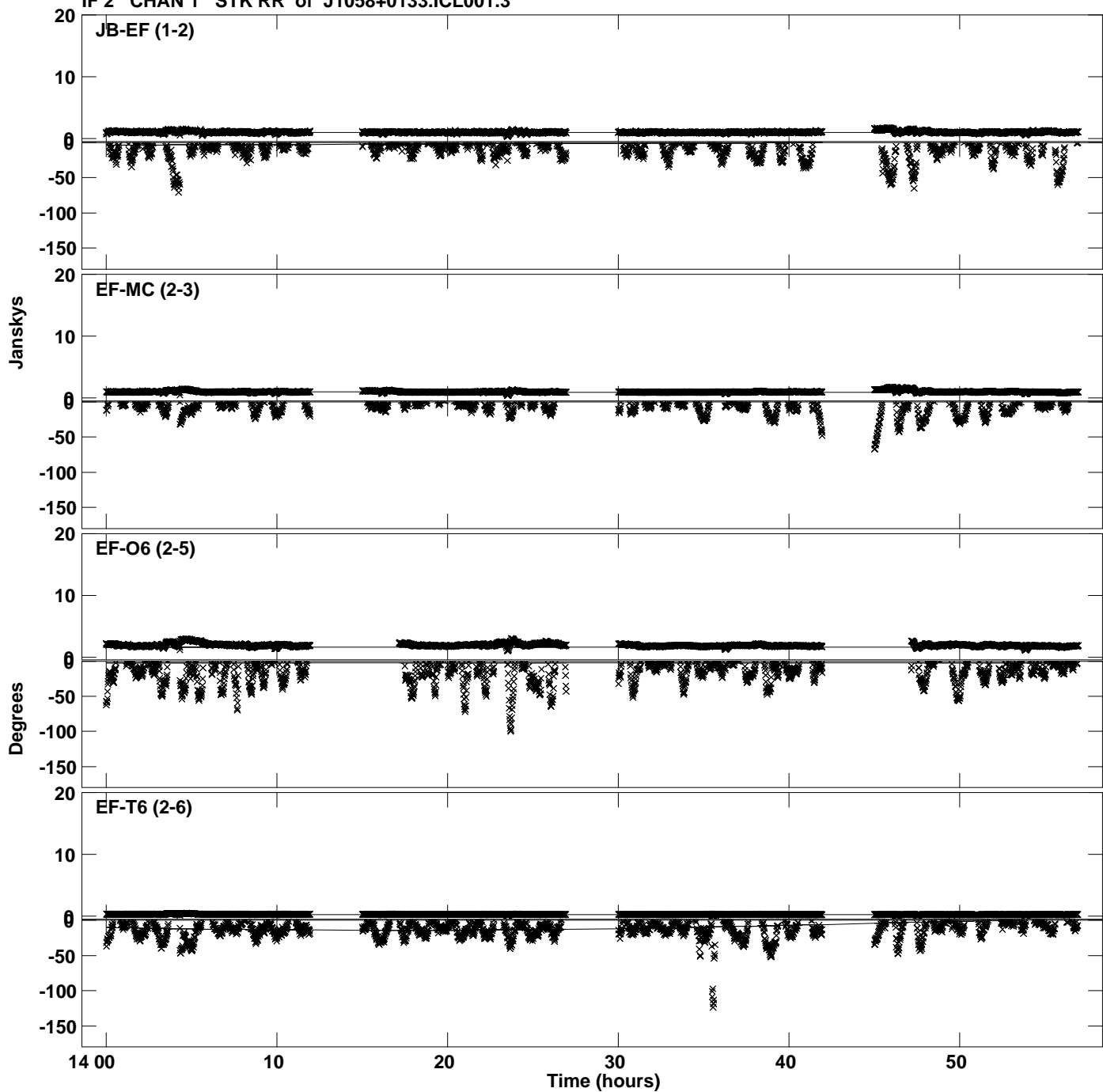
Plot file version 1 created 02-OCT-2023 16:25:05
Amplitude and Phase vs Time for J1058+0133.MULTI.1 CL # 3
IF 1 CHAN 1 STK RR of J1058+0133.ICL001.3



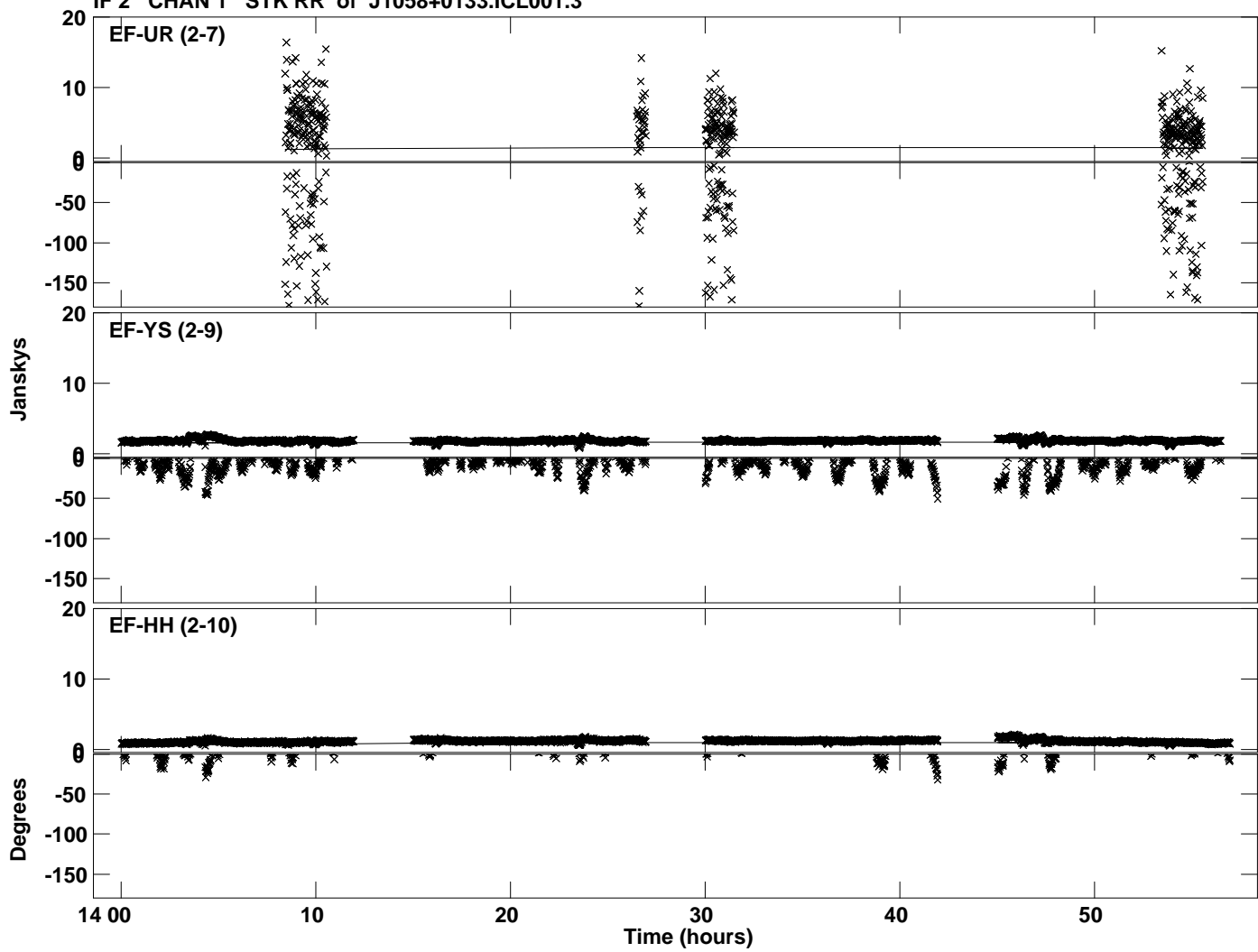
Plot file version 2 created 02-OCT-2023 16:25:05
Amplitude andPhase vs Time for J1058+0133.MULTI.1 CL # 3
IF 1 CHAN 1 STK RR of J1058+0133.ICL001.3



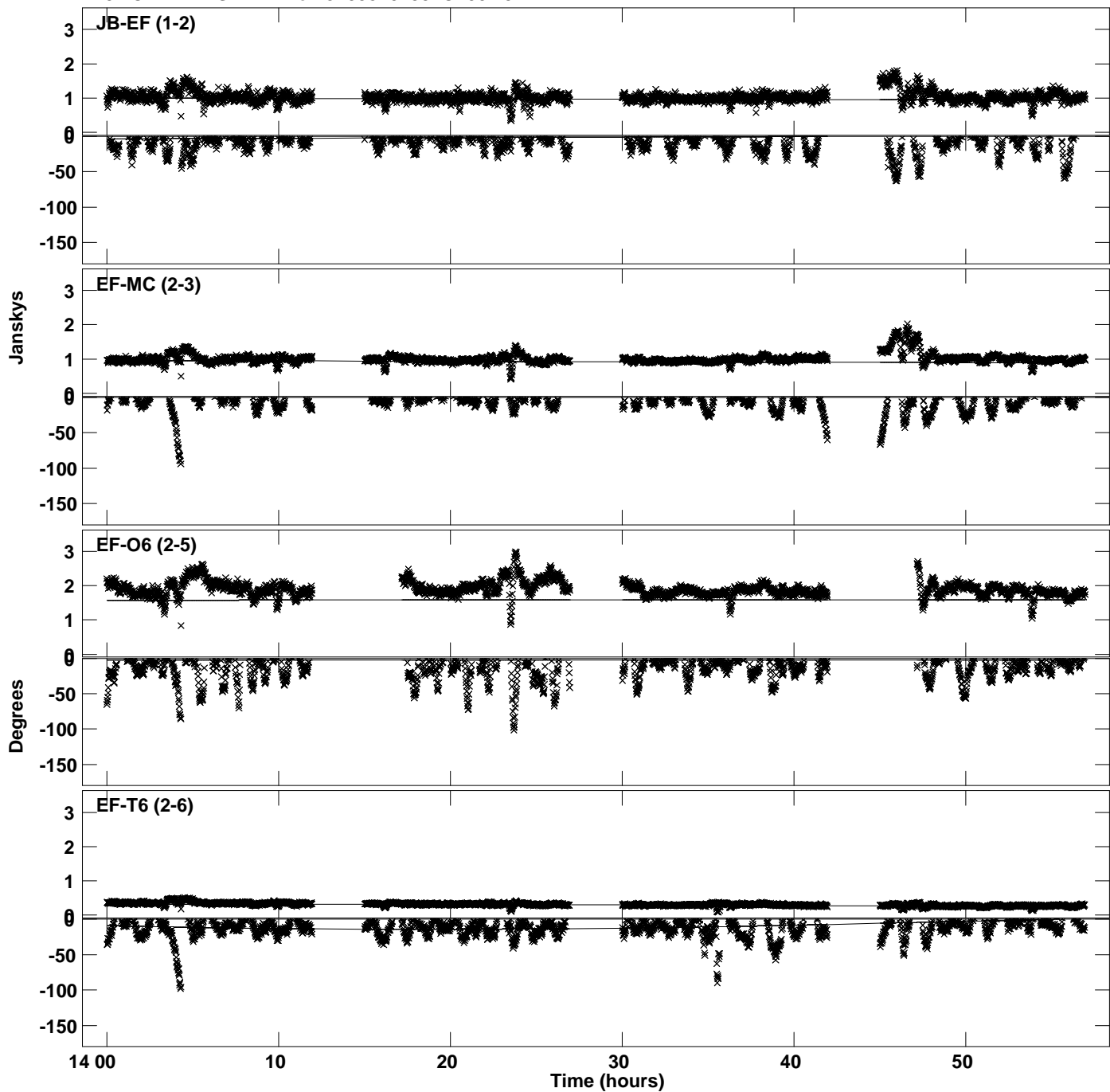
Plot file version 3 created 02-OCT-2023 16:25:07
Amplitude and Phase vs Time for J1058+0133.MULTI.1 CL # 3
IF 2 CHAN 1 STK RR of J1058+0133.ICL001.3



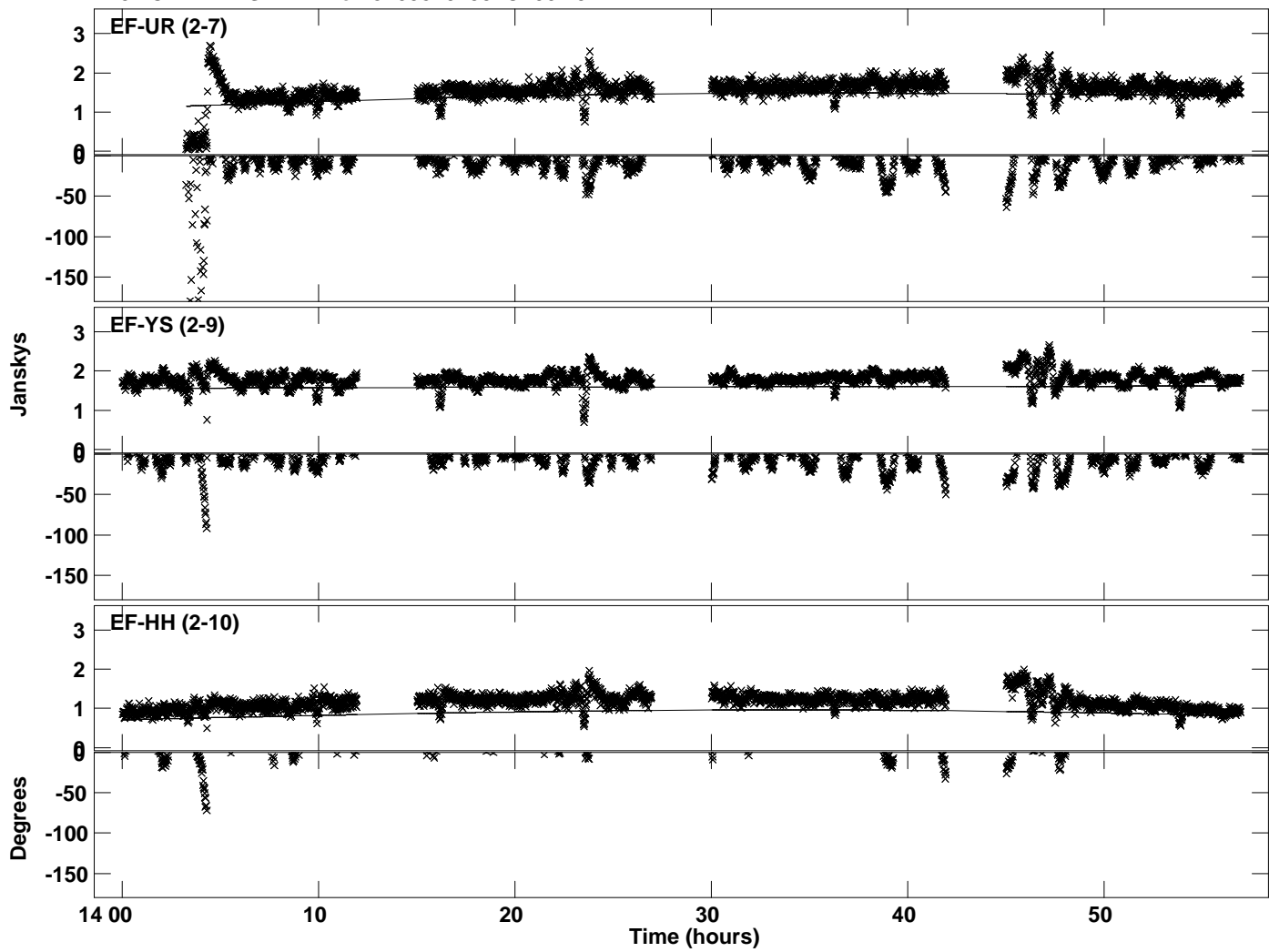
Plot file version 4 created 02-OCT-2023 16:25:07
Amplitude and Phase vs Time for J1058+0133.MULTI.1 CL # 3
IF 2 CHAN 1 STK RR of J1058+0133.ICL001.3



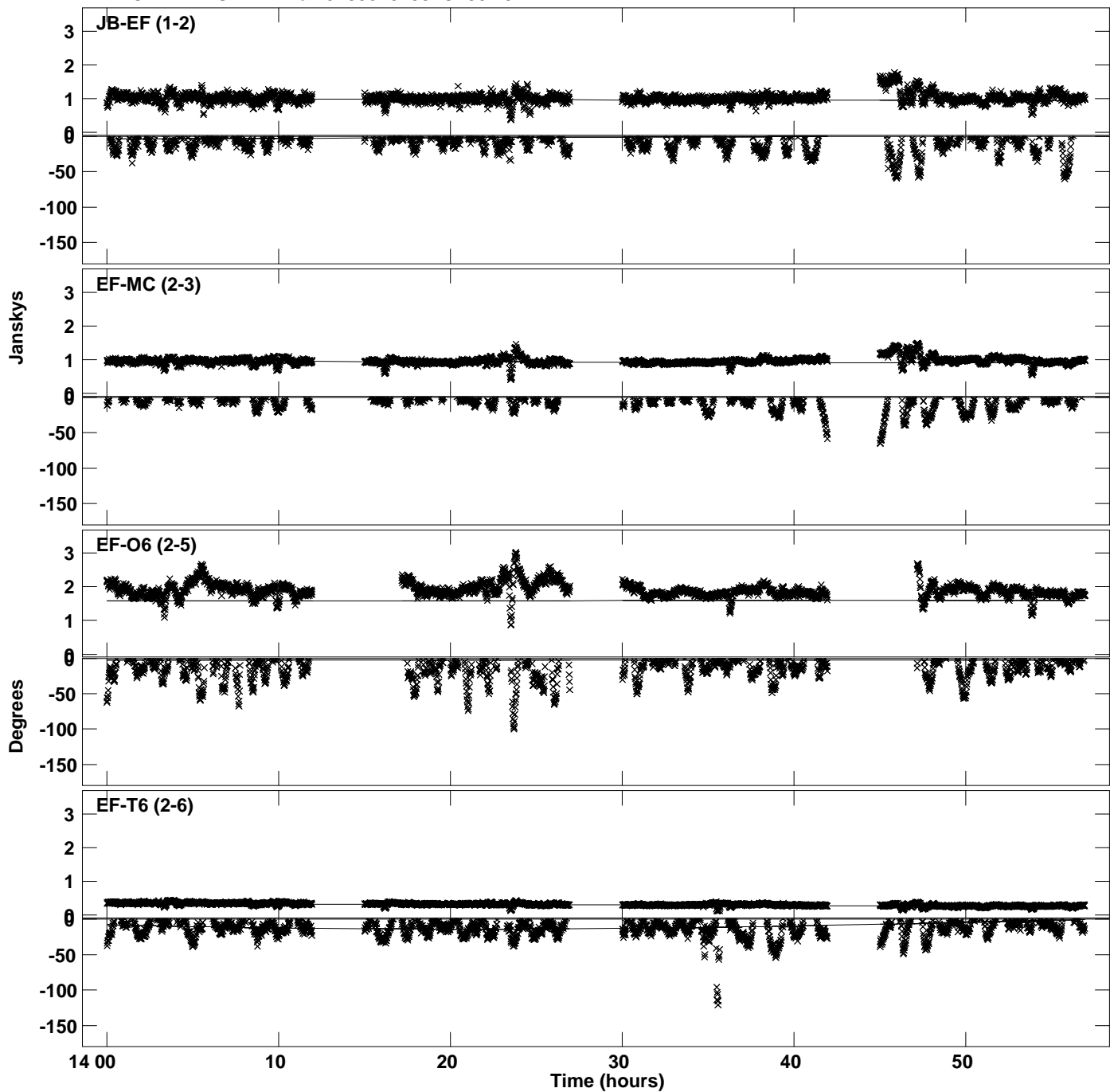
Plot file version 5 created 02-OCT-2023 16:25:10
Amplitude andPhase vs Time for J1058+0133.MULTI.1 CL # 3
IF 3 CHAN 1 STK RR of J1058+0133.ICL001.3



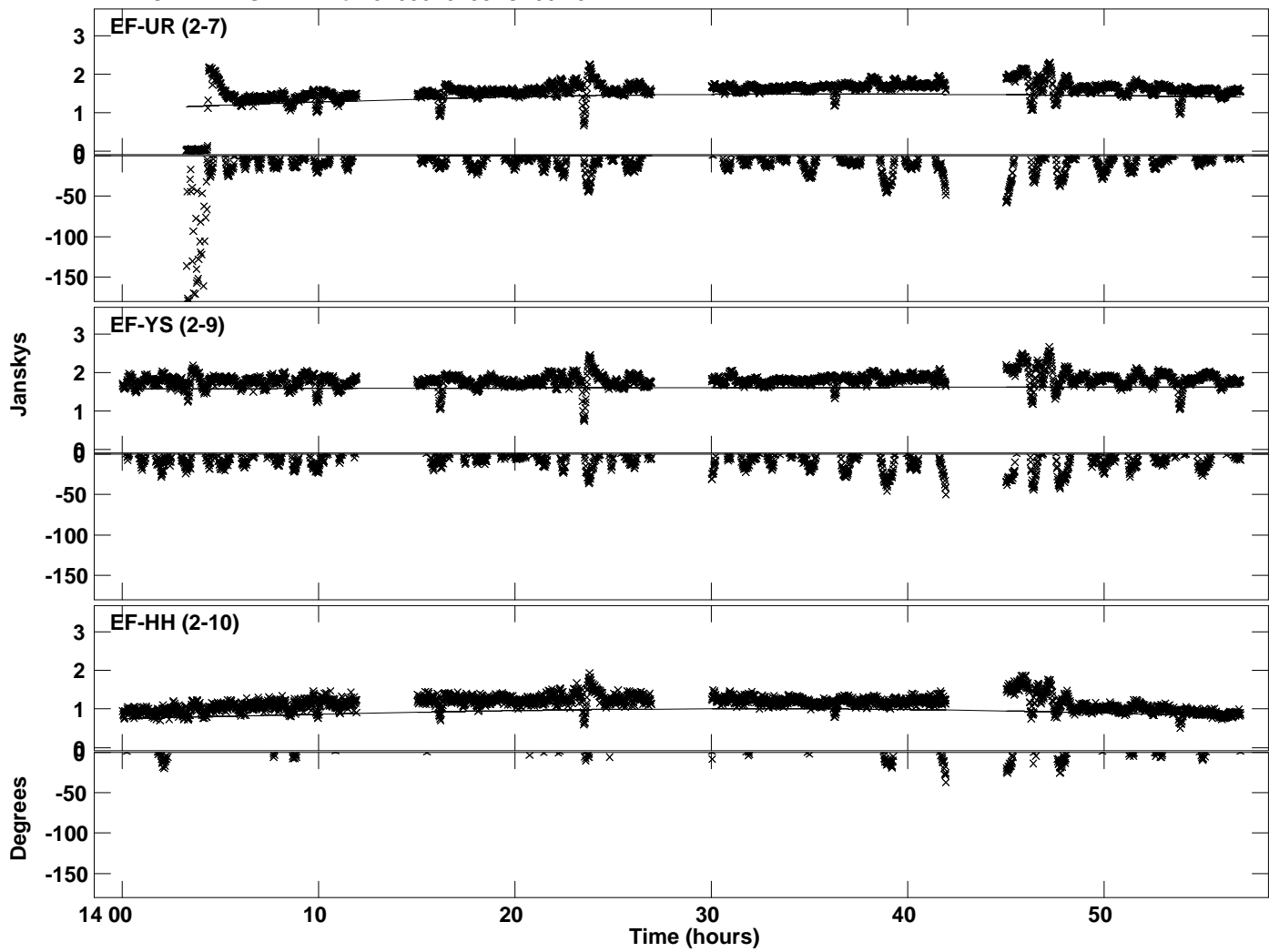
Plot file version 6 created 02-OCT-2023 16:25:10
Amplitude andPhase vs Time for J1058+0133.MULTI.1 CL # 3
IF 3 CHAN 1 STK RR of J1058+0133.ICL001.3



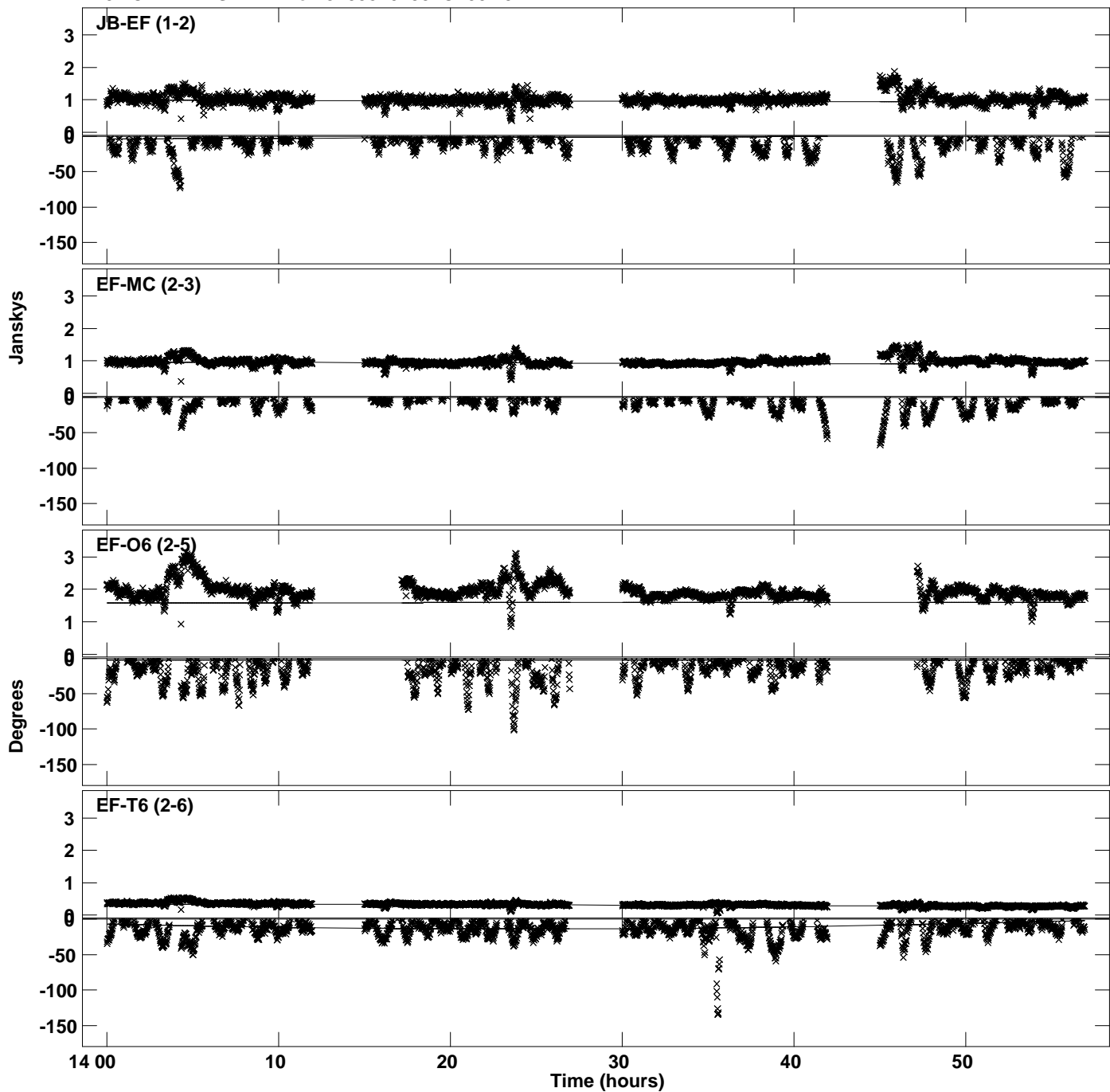
PLot file version 7 created 02-OCT-2023 16:25:13
Amplitude andPhase vs Time for J1058+0133.MULTI.1 CL # 3
IF 4 CHAN 1 STK RR of J1058+0133.ICL001.3



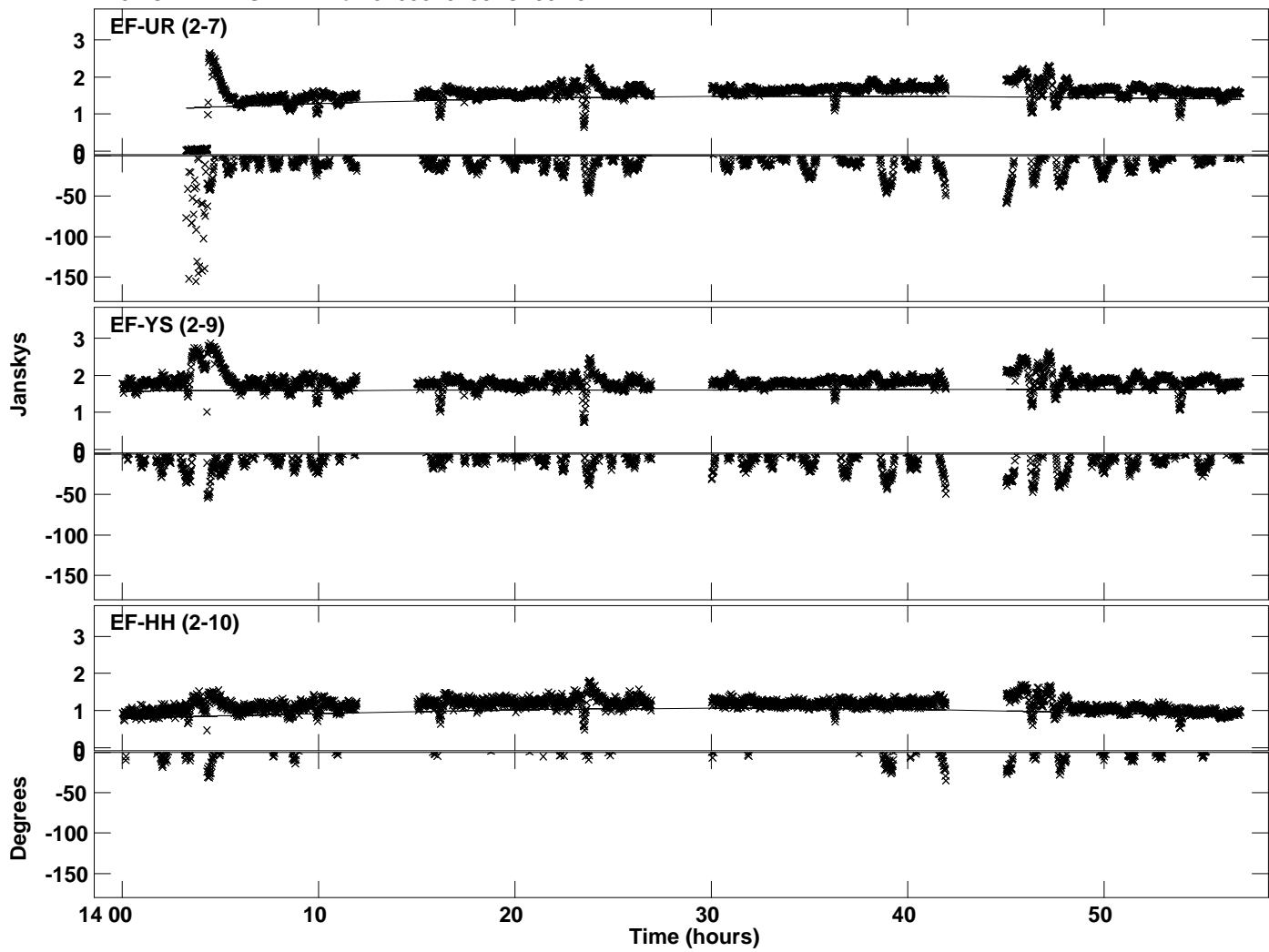
Plot file version 8 created 02-OCT-2023 16:25:13
Amplitude and Phase vs Time for J1058+0133.MULTI.1 CL # 3
IF 4 CHAN 1 STK RR of J1058+0133.ICL001.3



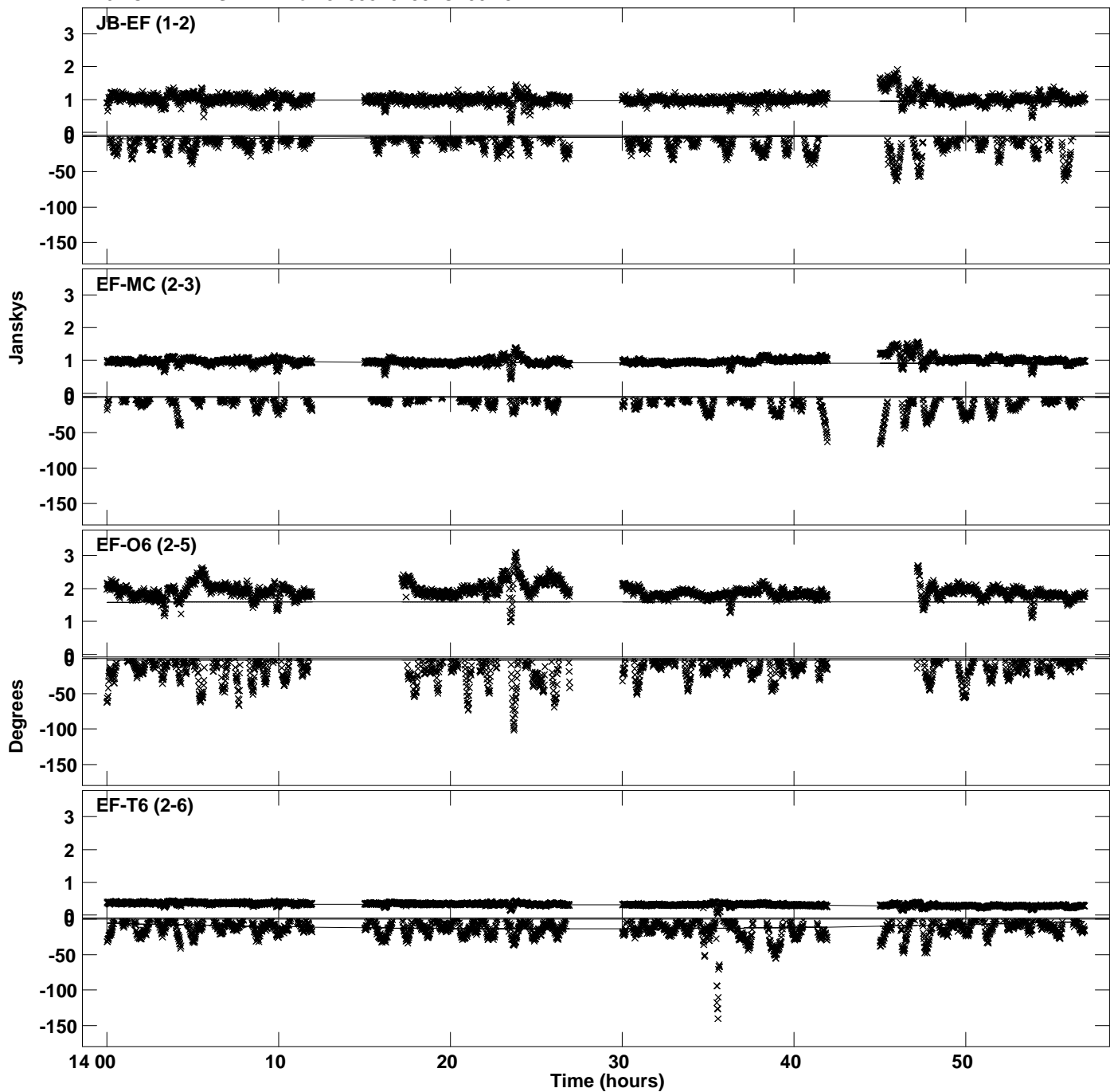
Plot file version 9 created 02-OCT-2023 16:25:15
Amplitude and Phase vs Time for J1058+0133.MULTI.1 CL # 3
IF 5 CHAN 1 STK RR of J1058+0133.ICL001.3



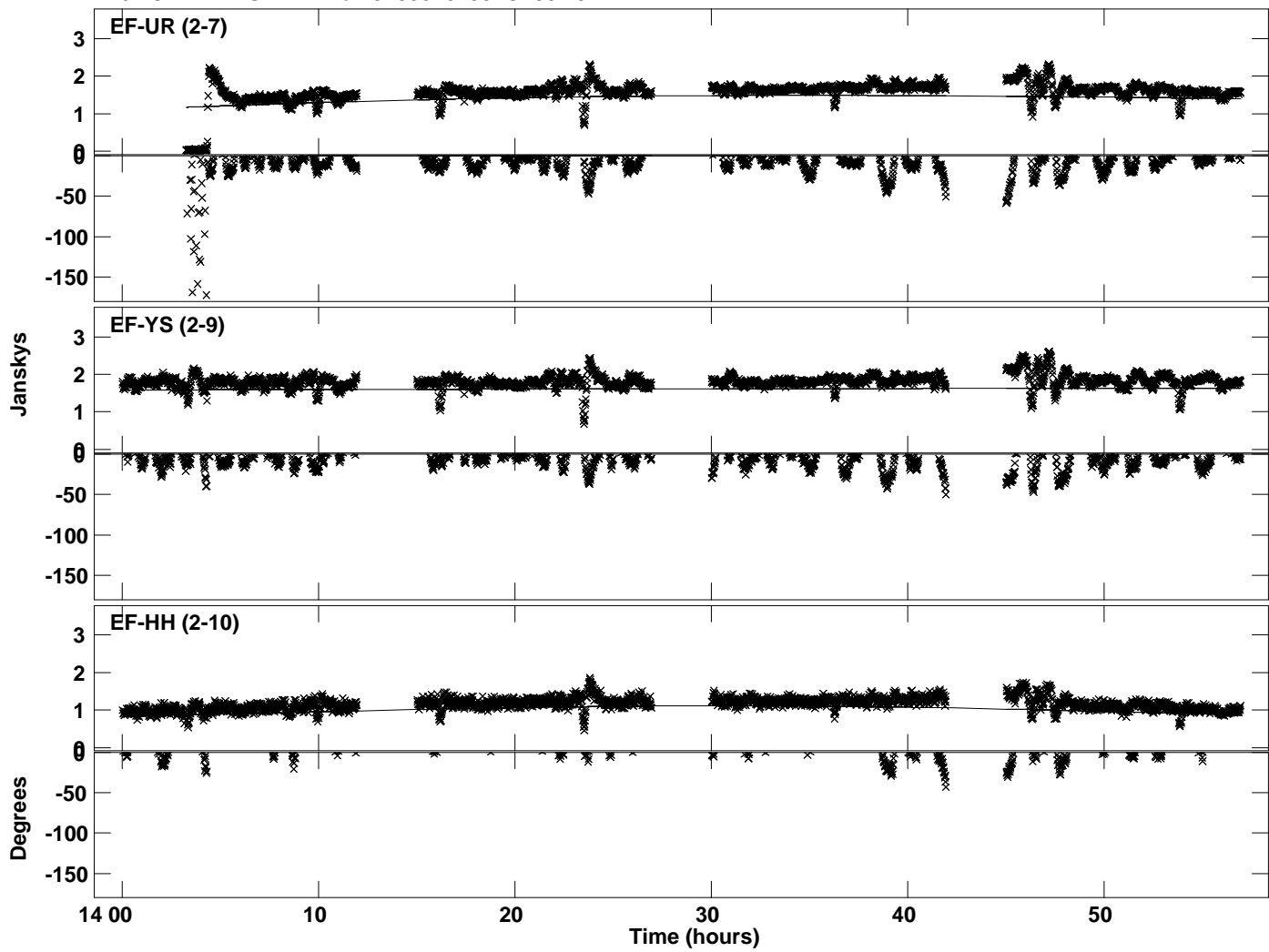
Plot file version 10 created 02-OCT-2023 16:25:15
Amplitude andPhase vs Time for J1058+0133.MULTI.1 CL # 3
IF 5 CHAN 1 STK RR of J1058+0133.ICL001.3



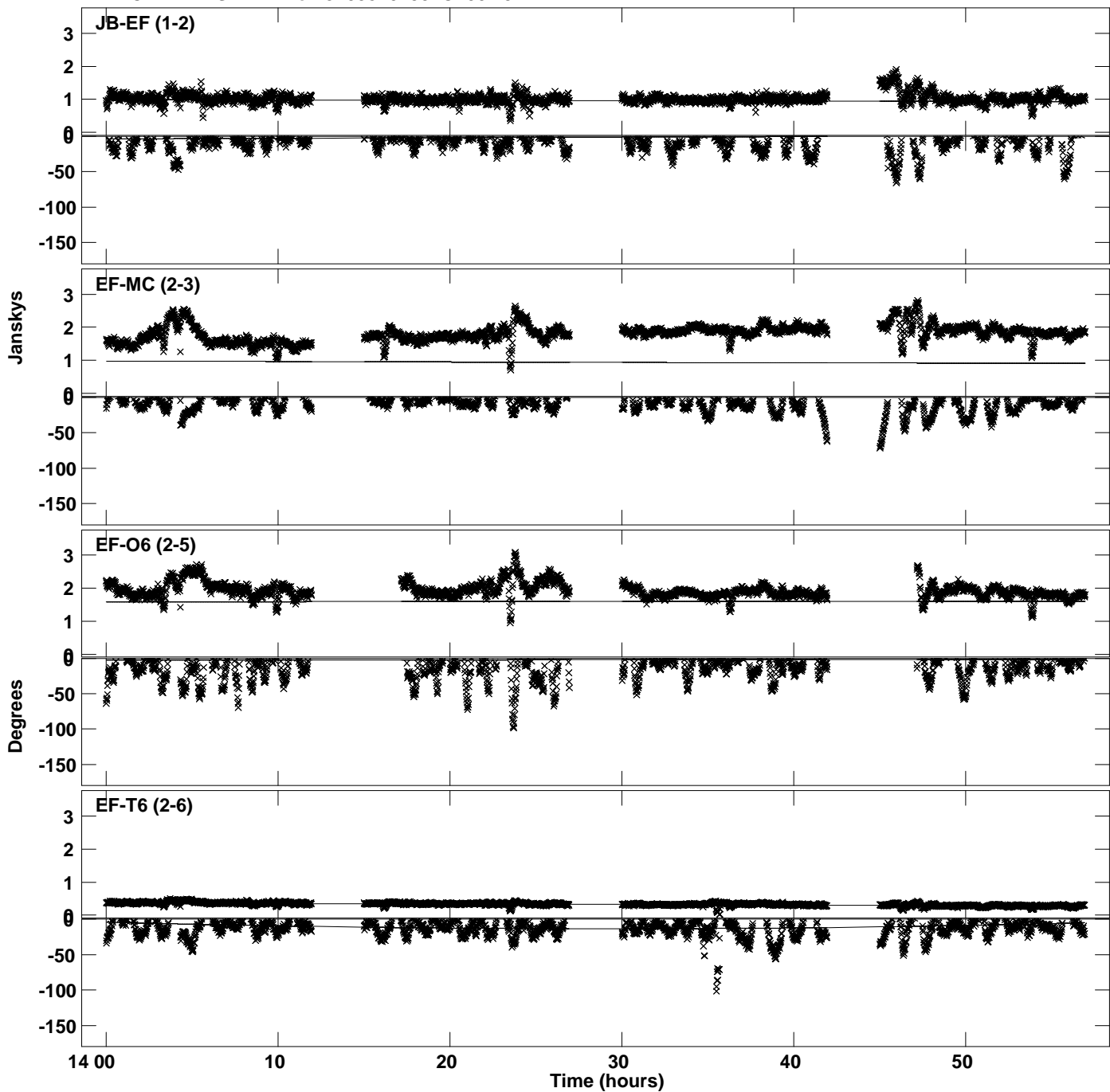
Plot file version 11 created 02-OCT-2023 16:25:17
Amplitude and Phase vs Time for J1058+0133.MULTI.1 CL # 3
IF 6 CHAN 1 STK RR of J1058+0133.ICL001.3



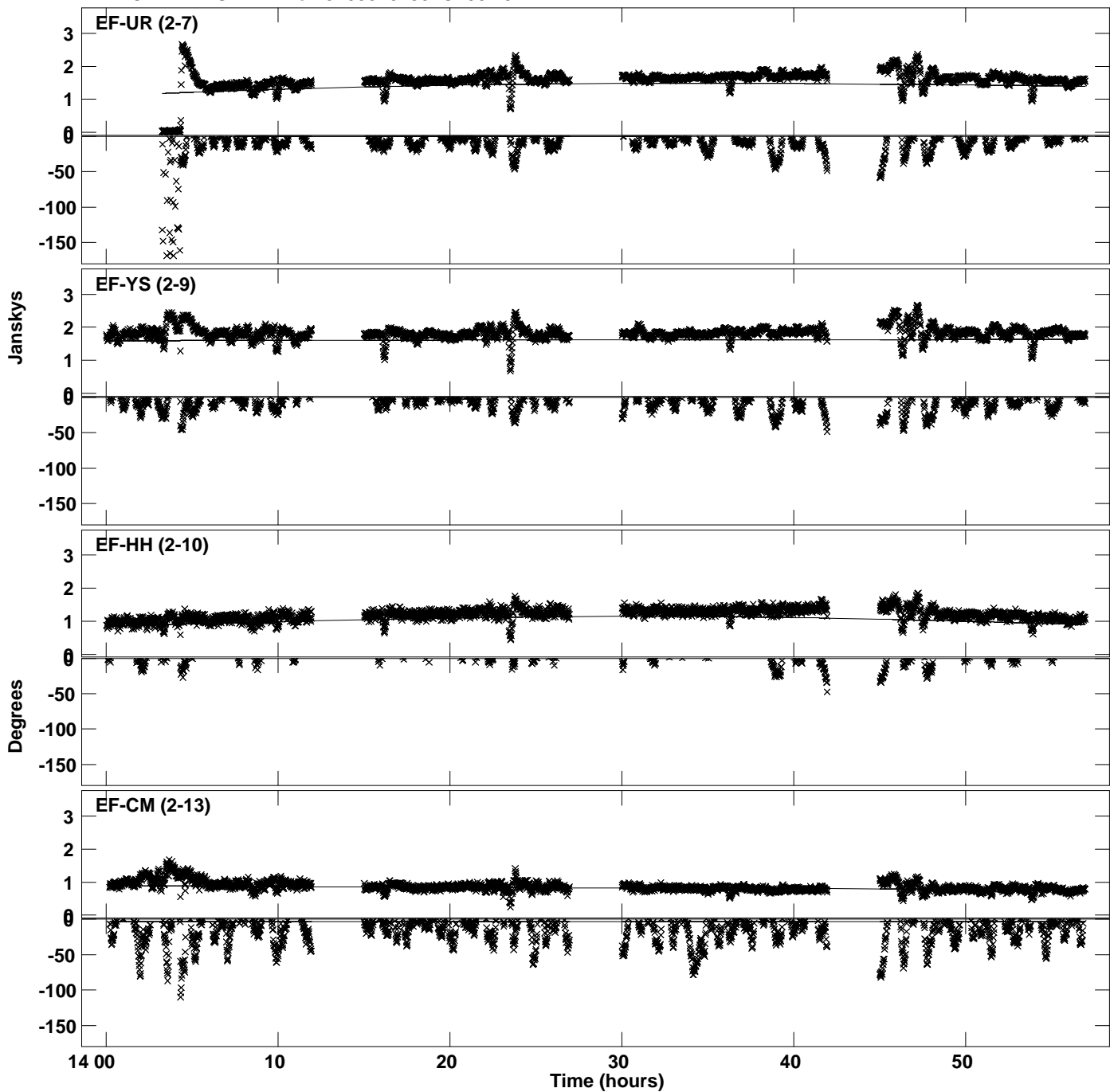
Plot file version 12 created 02-OCT-2023 16:25:17
Amplitude and Phase vs Time for J1058+0133.MULTI.1 CL # 3
IF 6 CHAN 1 STK RR of J1058+0133.ICL001.3



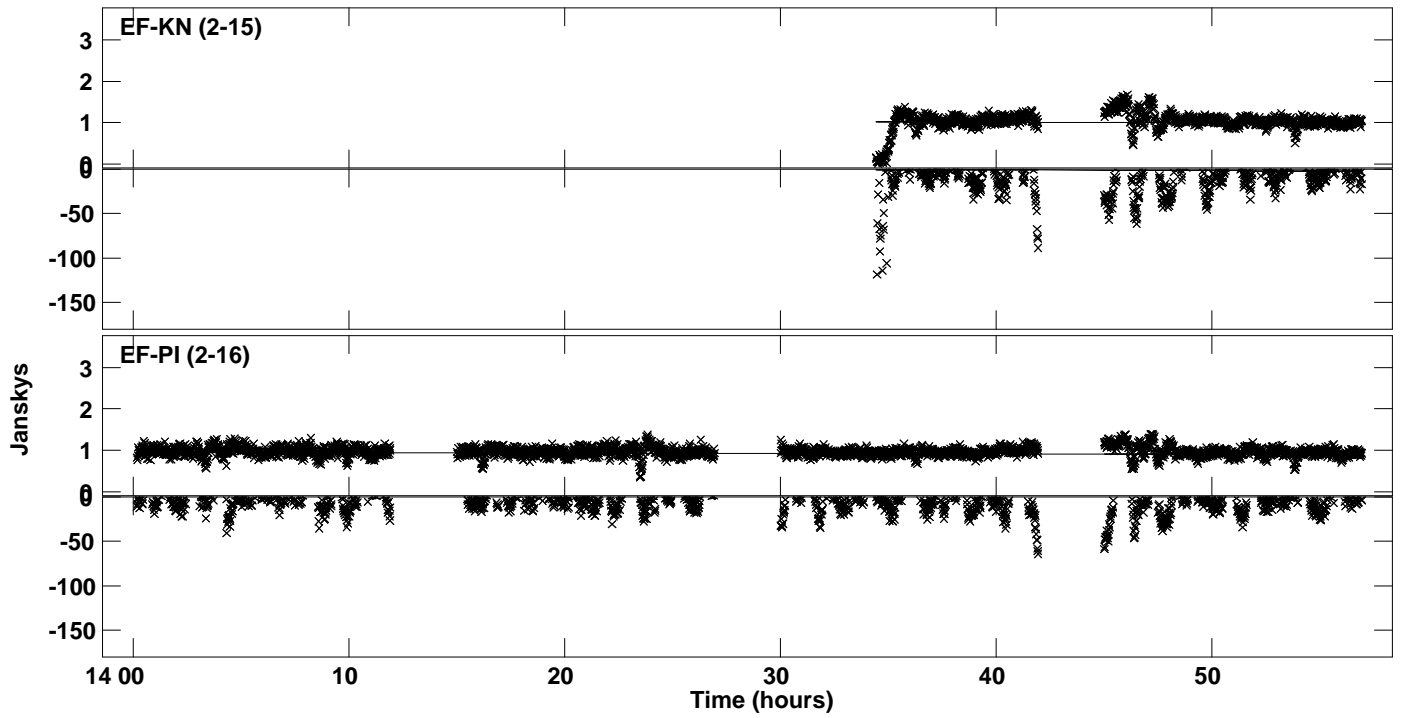
PLot file version 13 created 02-OCT-2023 16:25:19
Amplitude andPhase vs Time for J1058+0133.MULTI.1 CL # 3
IF 7 CHAN 1 STK RR of J1058+0133.ICL001.3



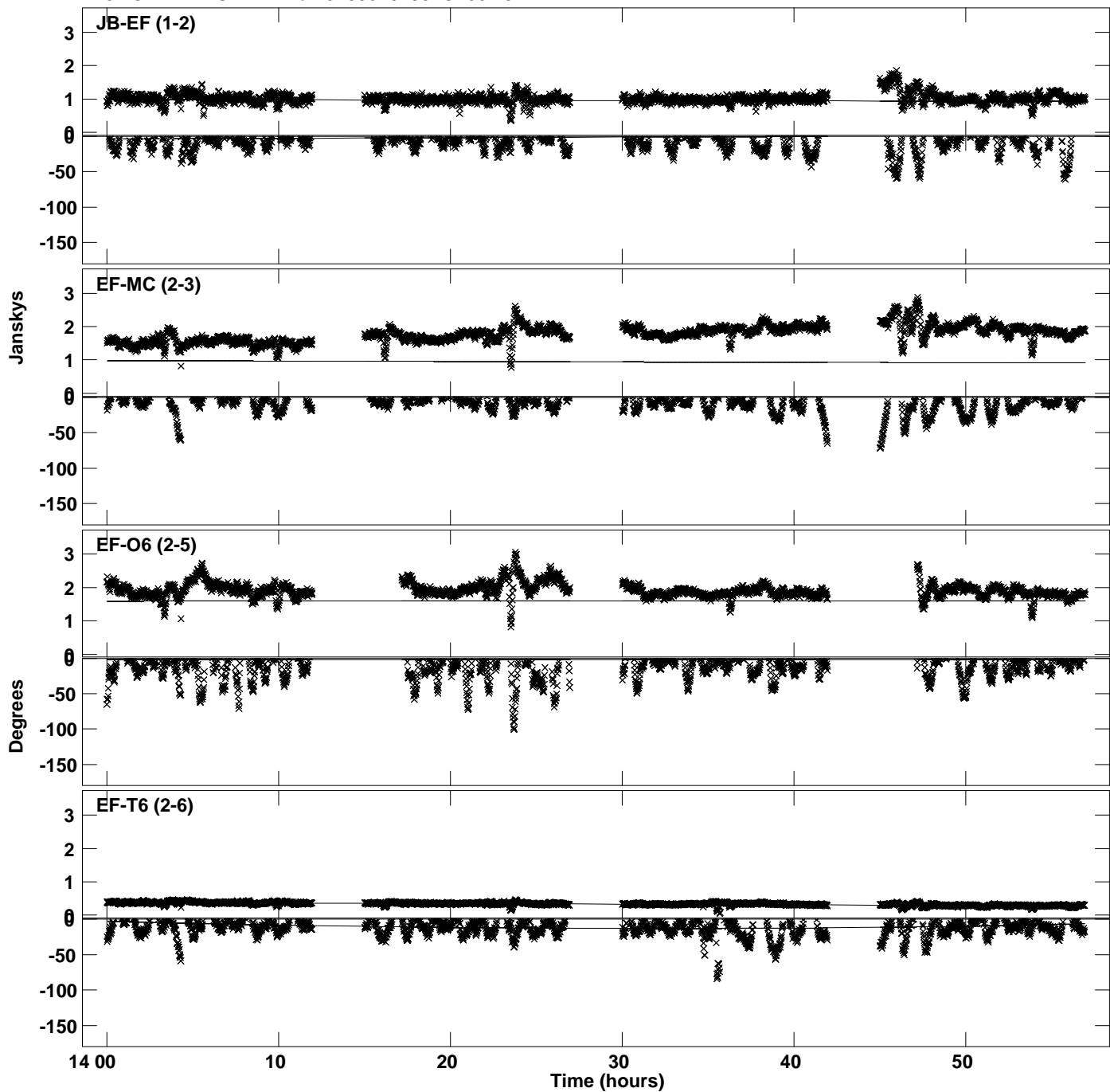
PLot file version 14 created 02-OCT-2023 16:25:19
Amplitude andPhase vs Time for J1058+0133.MULTI.1 CL # 3
IF 7 CHAN 1 STK RR of J1058+0133.ICL001.3



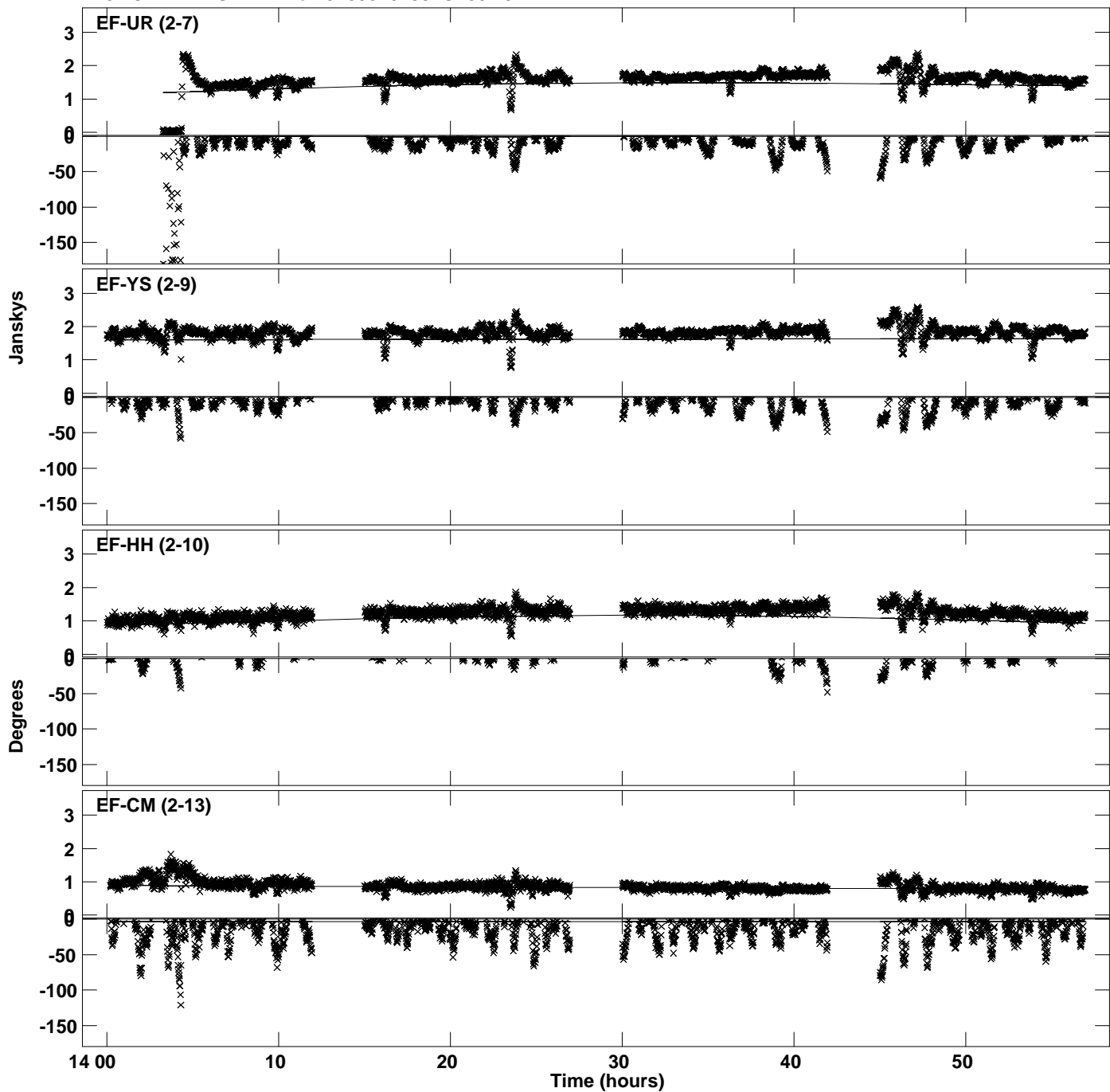
PLot file version 15 created 02-OCT-2023 16:25:19
Amplitude andPhase vs Time for J1058+0133.MULTI.1 CL # 3
IF 7 CHAN 1 STK RR of J1058+0133.ICL001.3



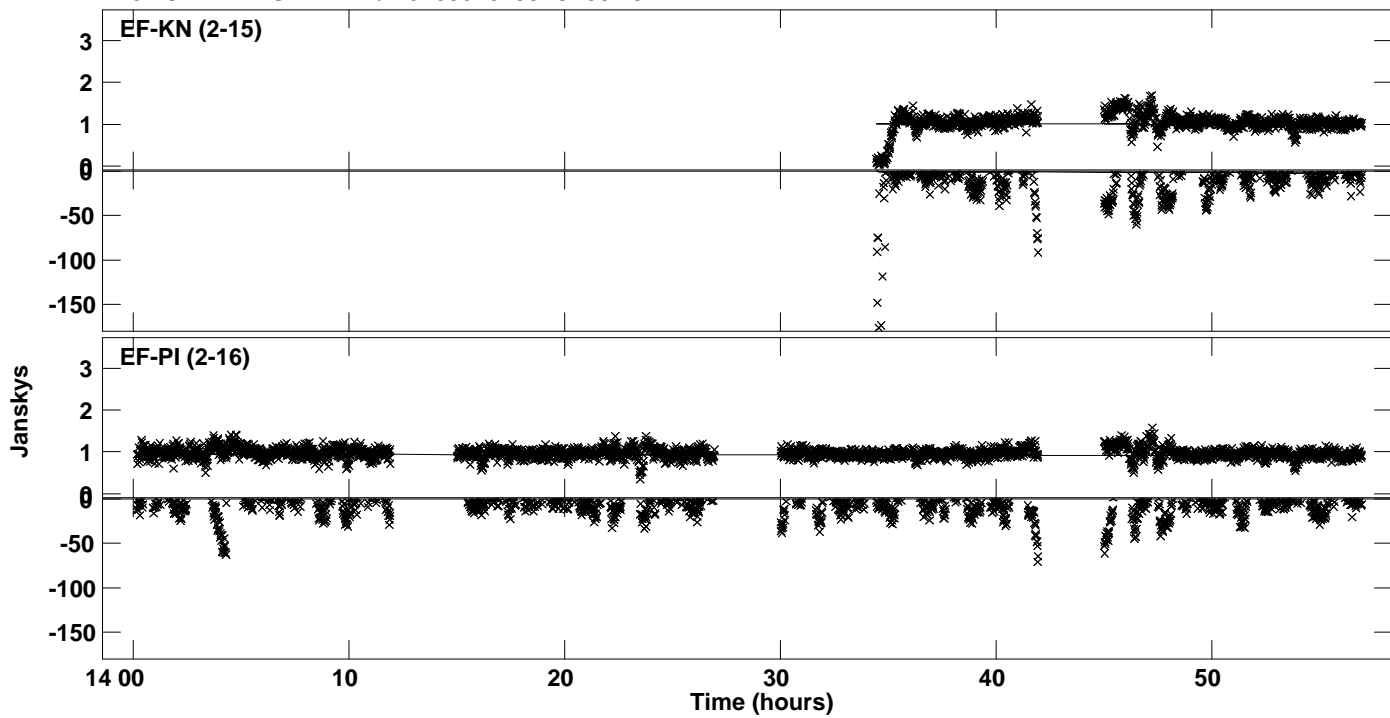
PLot file version 16 created 02-OCT-2023 16:25:21
Amplitude andPhase vs Time for J1058+0133.MULTI.1 CL # 3
IF 8 CHAN 1 STK RR of J1058+0133.ICL001.3



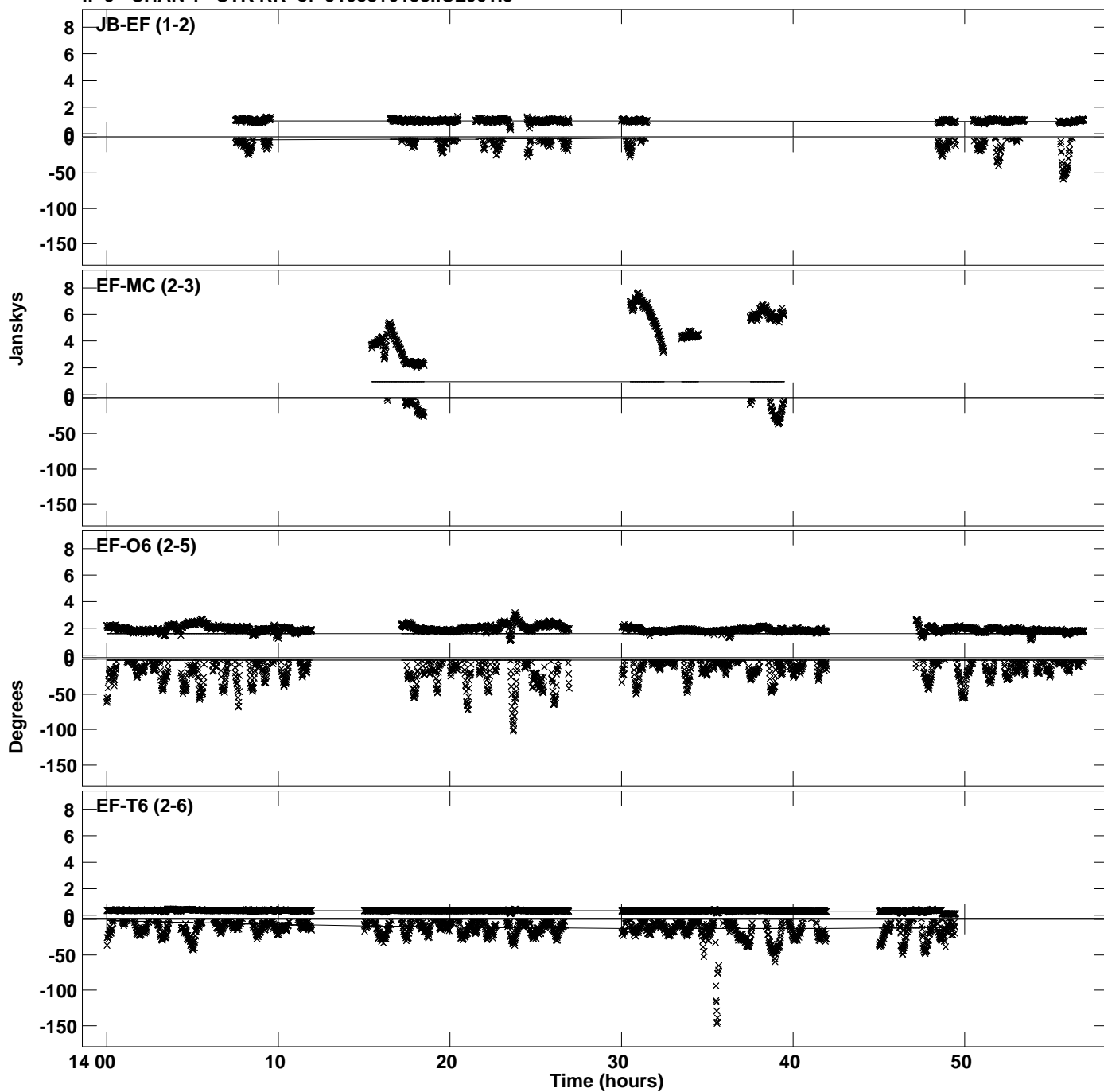
Plot file version 17 created 02-OCT-2023 16:25:21
Amplitude and Phase vs Time for J1058+0133.MULTI.1 CL # 3
IF 8 CHAN 1 STK RR of J1058+0133.ICL001.3



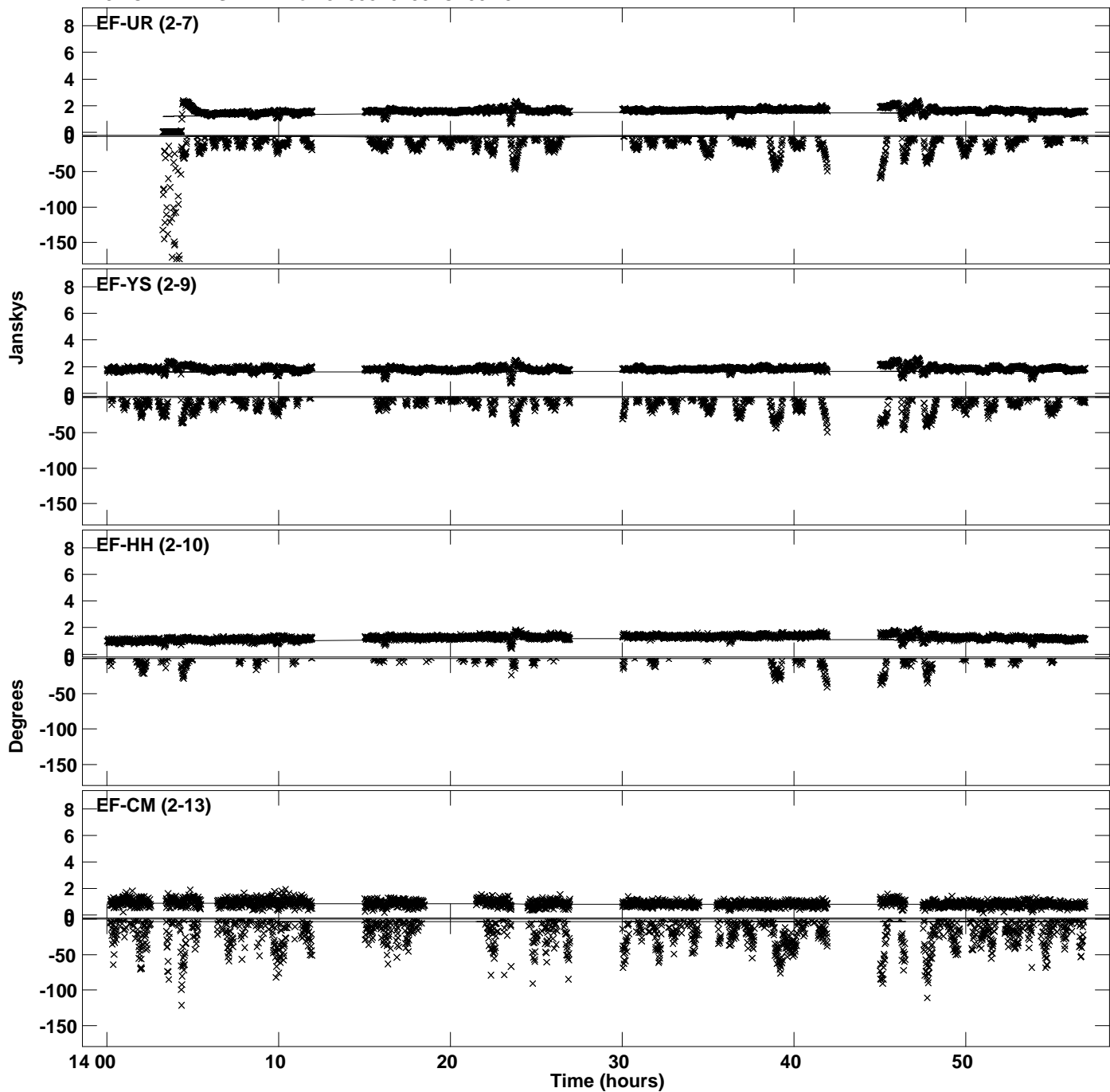
PLot file version 18 created 02-OCT-2023 16:25:21
Amplitude andPhase vs Time for J1058+0133.MULTI.1 CL # 3
IF 8 CHAN 1 STK RR of J1058+0133.ICL001.3



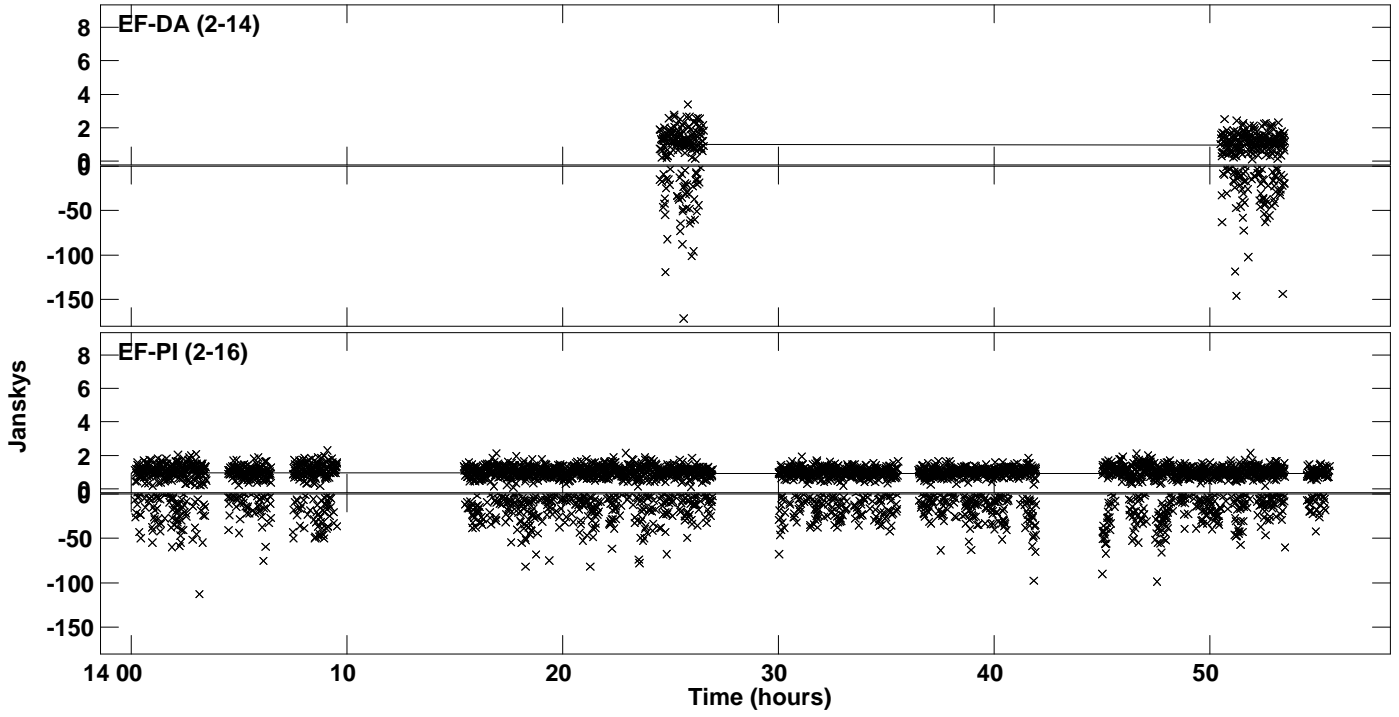
Plot file version 19 created 02-OCT-2023 16:25:22
Amplitude and Phase vs Time for J1058+0133.MULTI.1 CL # 3
IF 9 CHAN 1 STK RR of J1058+0133.ICL001.3



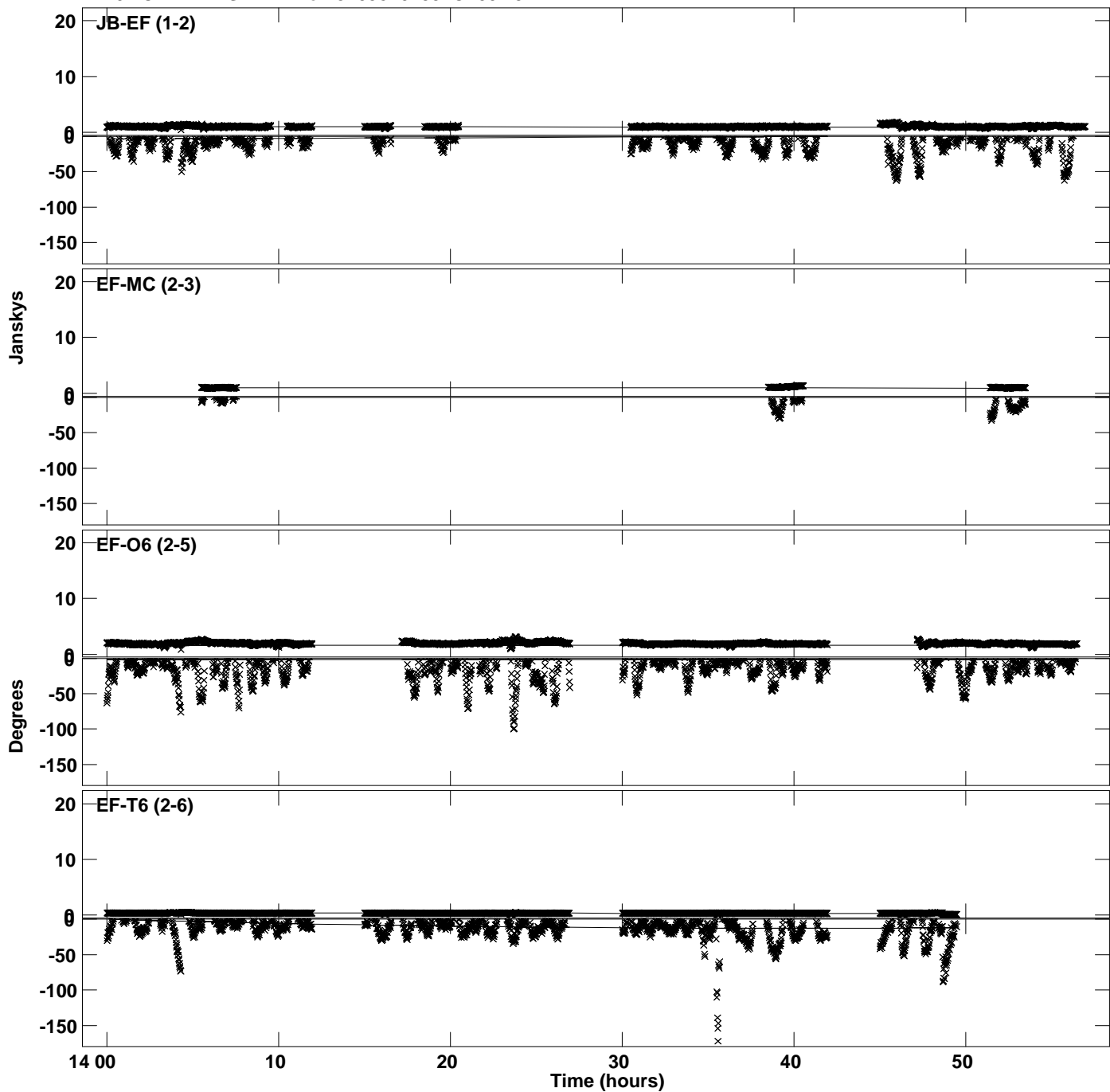
Plot file version 20 created 02-OCT-2023 16:25:22
Amplitude and Phase vs Time for J1058+0133.MULTI.1 CL # 3
IF 9 CHAN 1 STK RR of J1058+0133.ICL001.3



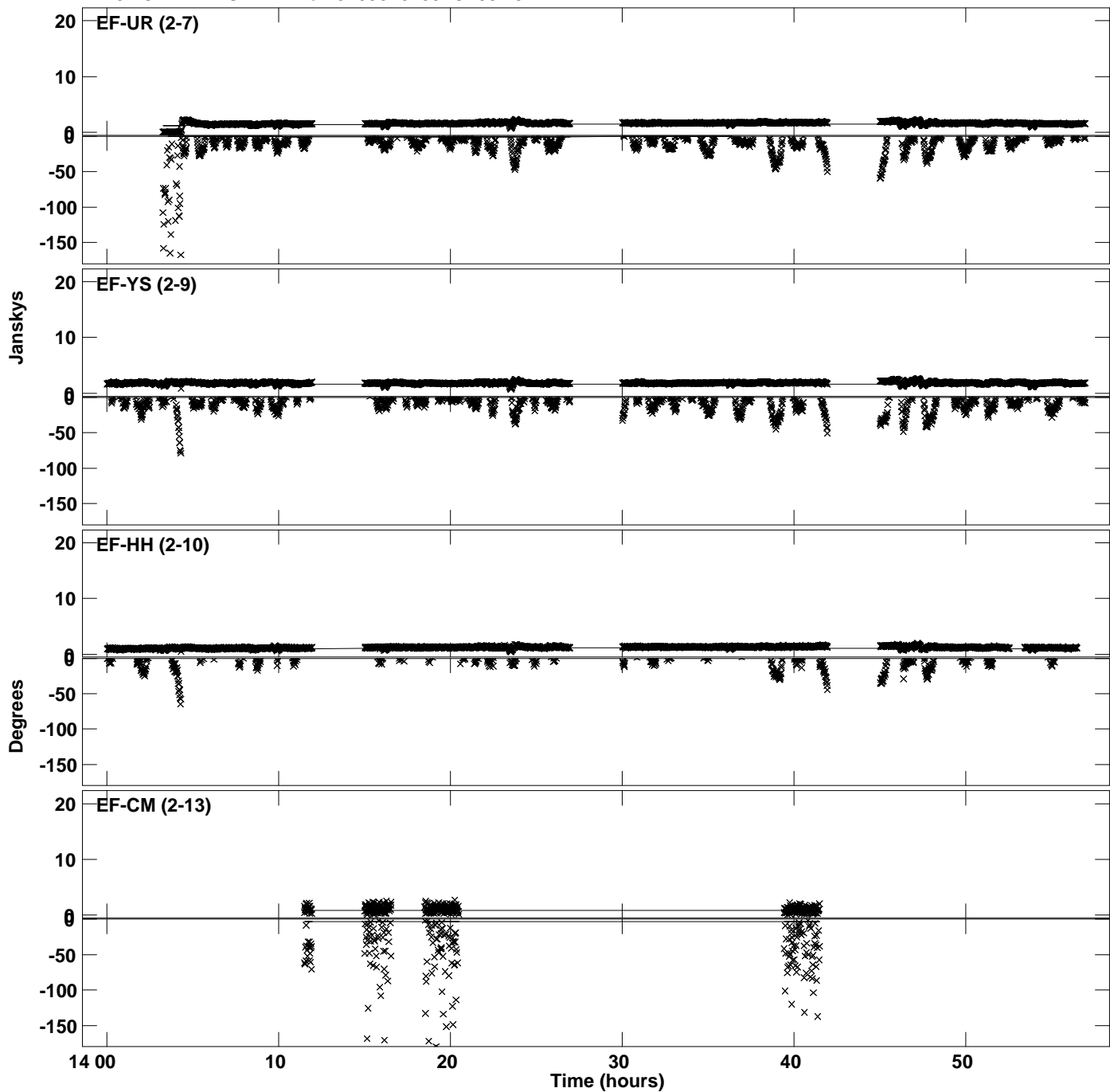
PLot file version 21 created 02-OCT-2023 16:25:22
Amplitude andPhase vs Time for J1058+0133.MULTI.1 CL # 3
IF 9 CHAN 1 STK RR of J1058+0133.ICL001.3



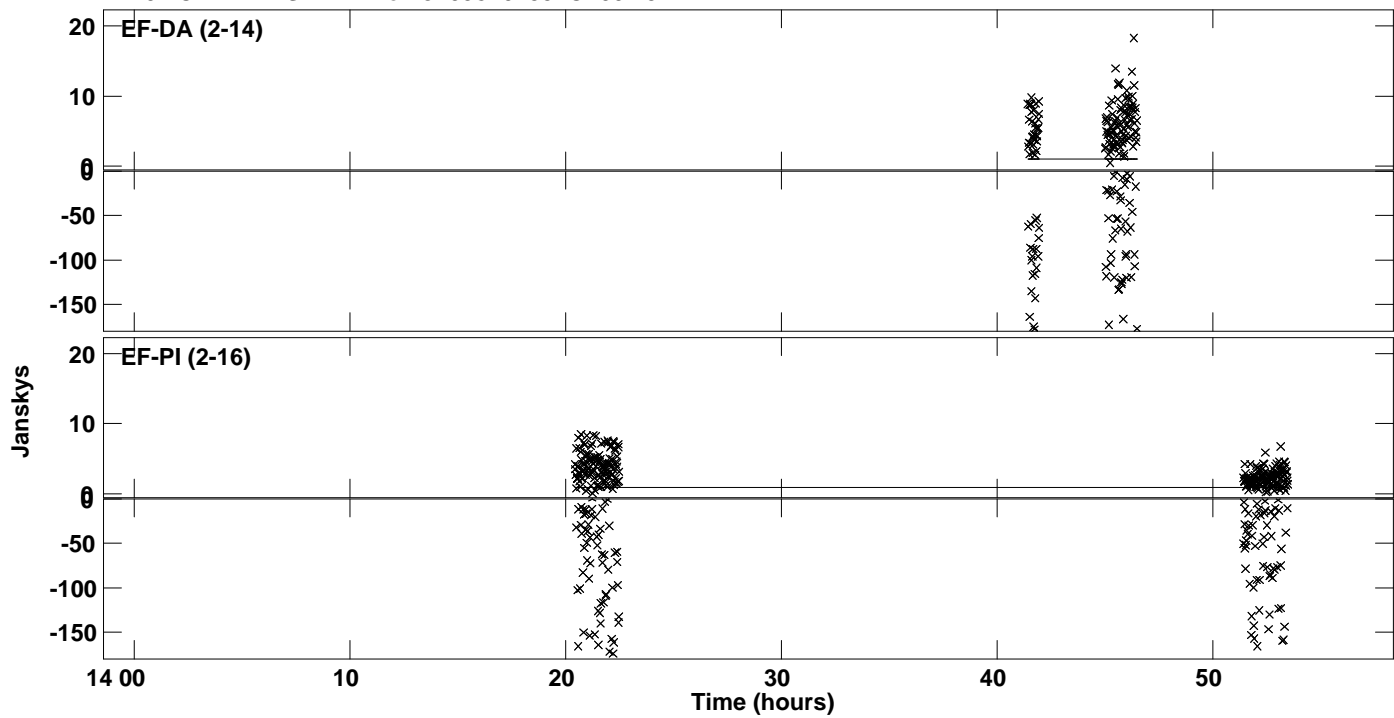
Plot file version 22 created 02-OCT-2023 16:25:25
Amplitude and Phase vs Time for J1058+0133.MULTI.1 CL # 3
IF 10 CHAN 1 STK RR of J1058+0133.ICL001.3



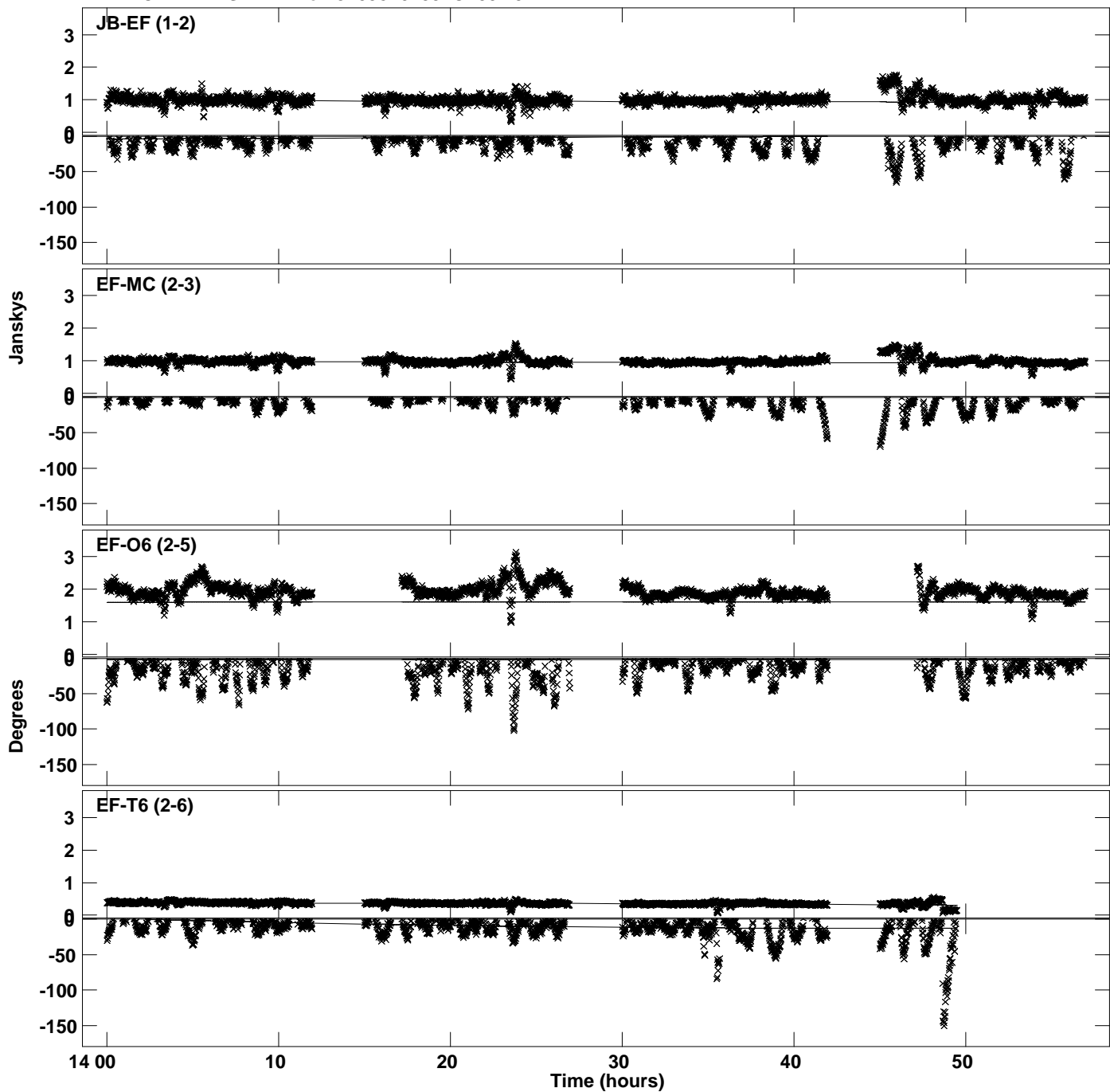
Plot file version 23 created 02-OCT-2023 16:25:25
Amplitude and Phase vs Time for J1058+0133.MULTI.1 CL # 3
IF 10 CHAN 1 STK RR of J1058+0133.ICL001.3



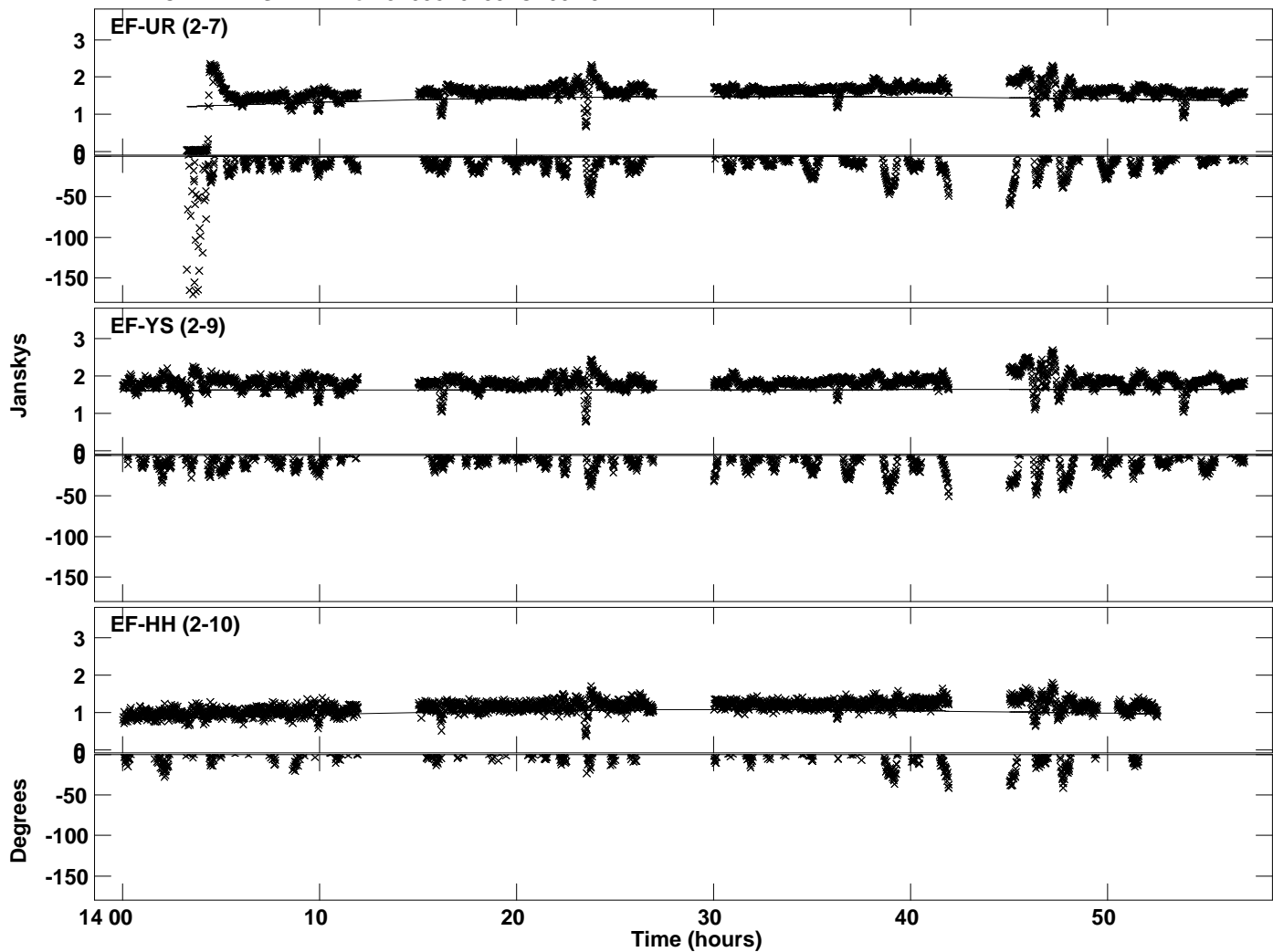
PLot file version 24 created 02-OCT-2023 16:25:25
Amplitude andPhase vs Time for J1058+0133.MULTI.1 CL # 3
IF 10 CHAN 1 STK RR of J1058+0133.ICL001.3



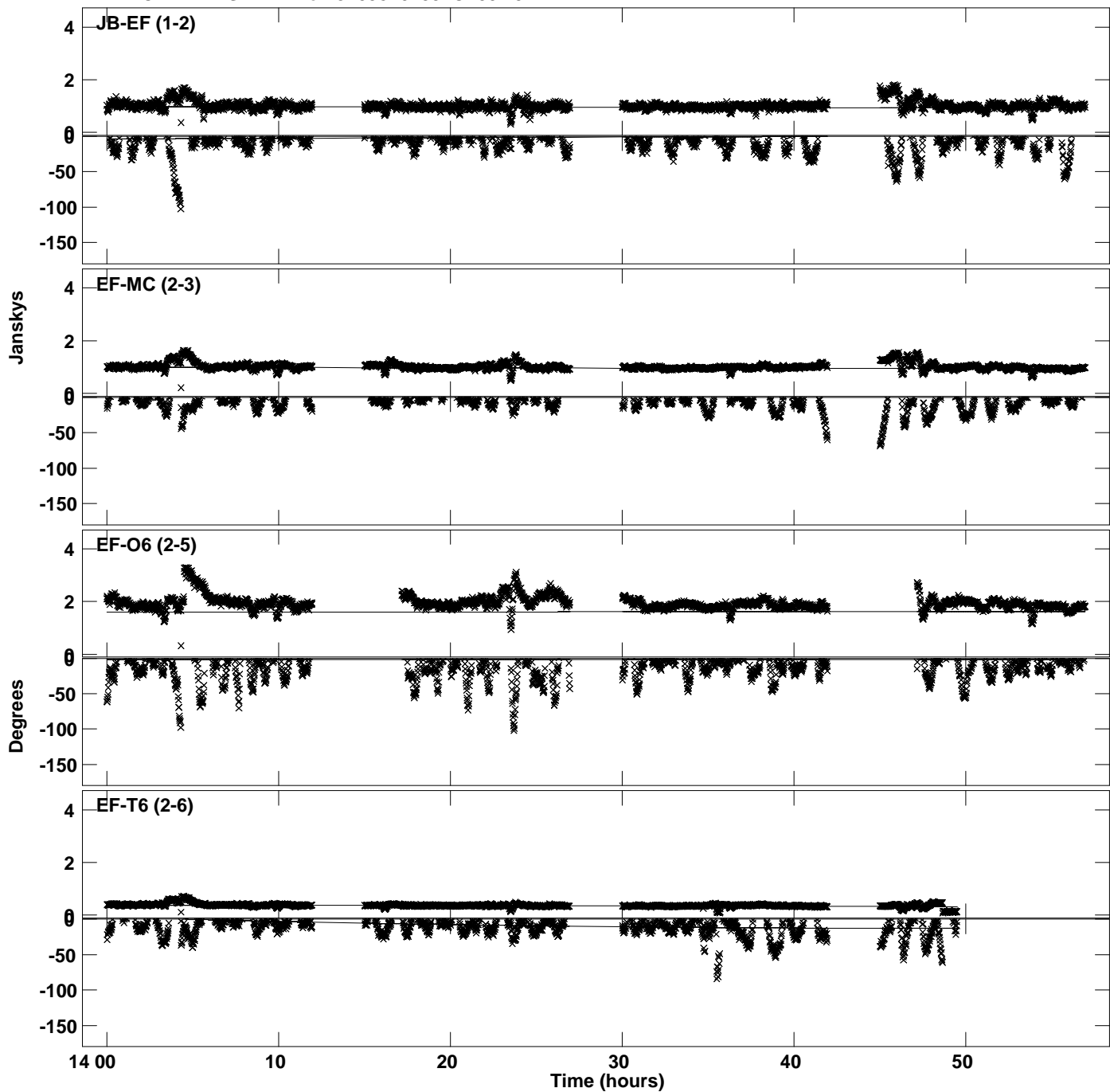
Plot file version 25 created 02-OCT-2023 16:25:27
Amplitude and Phase vs Time for J1058+0133.MULTI.1 CL # 3
IF 11 CHAN 1 STK RR of J1058+0133.ICL001.3



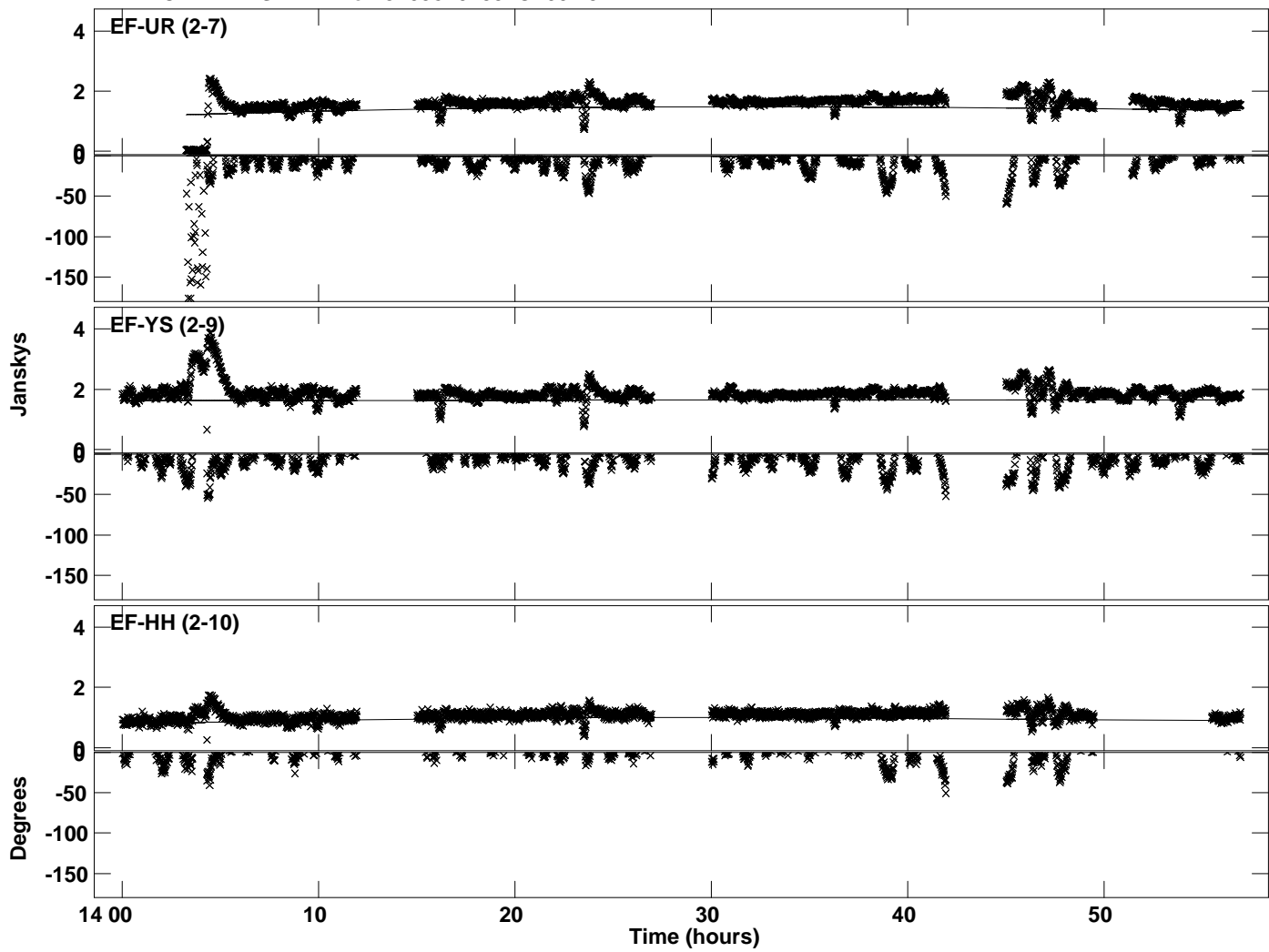
PLot file version 26 created 02-OCT-2023 16:25:27
Amplitude andPhase vs Time for J1058+0133.MULTI.1 CL # 3
IF 11 CHAN 1 STK RR of J1058+0133.ICL001.3



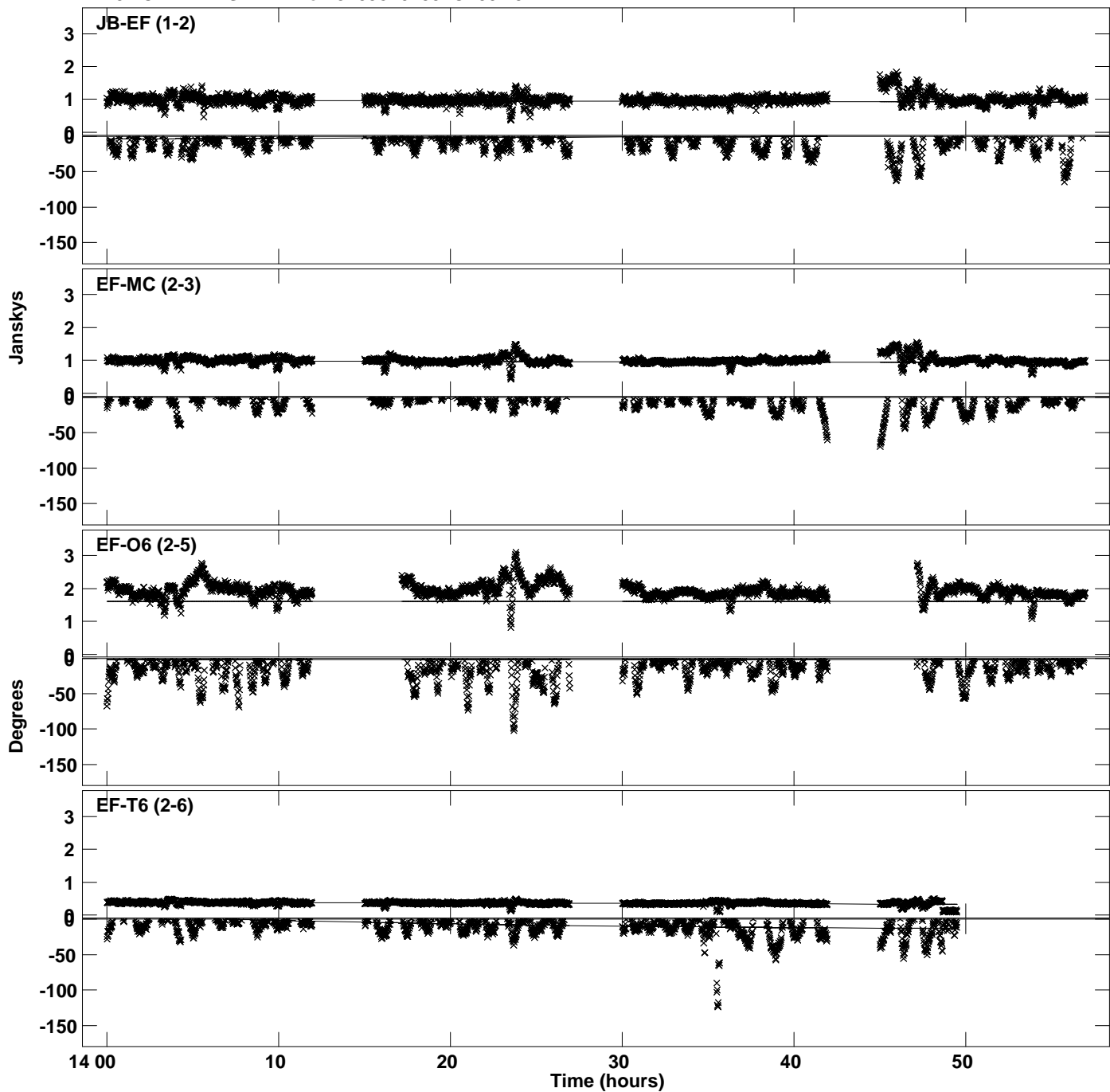
Plot file version 27 created 02-OCT-2023 16:25:30
Amplitude andPhase vs Time for J1058+0133.MULTI.1 CL # 3
IF 12 CHAN 1 STK RR of J1058+0133.ICL001.3



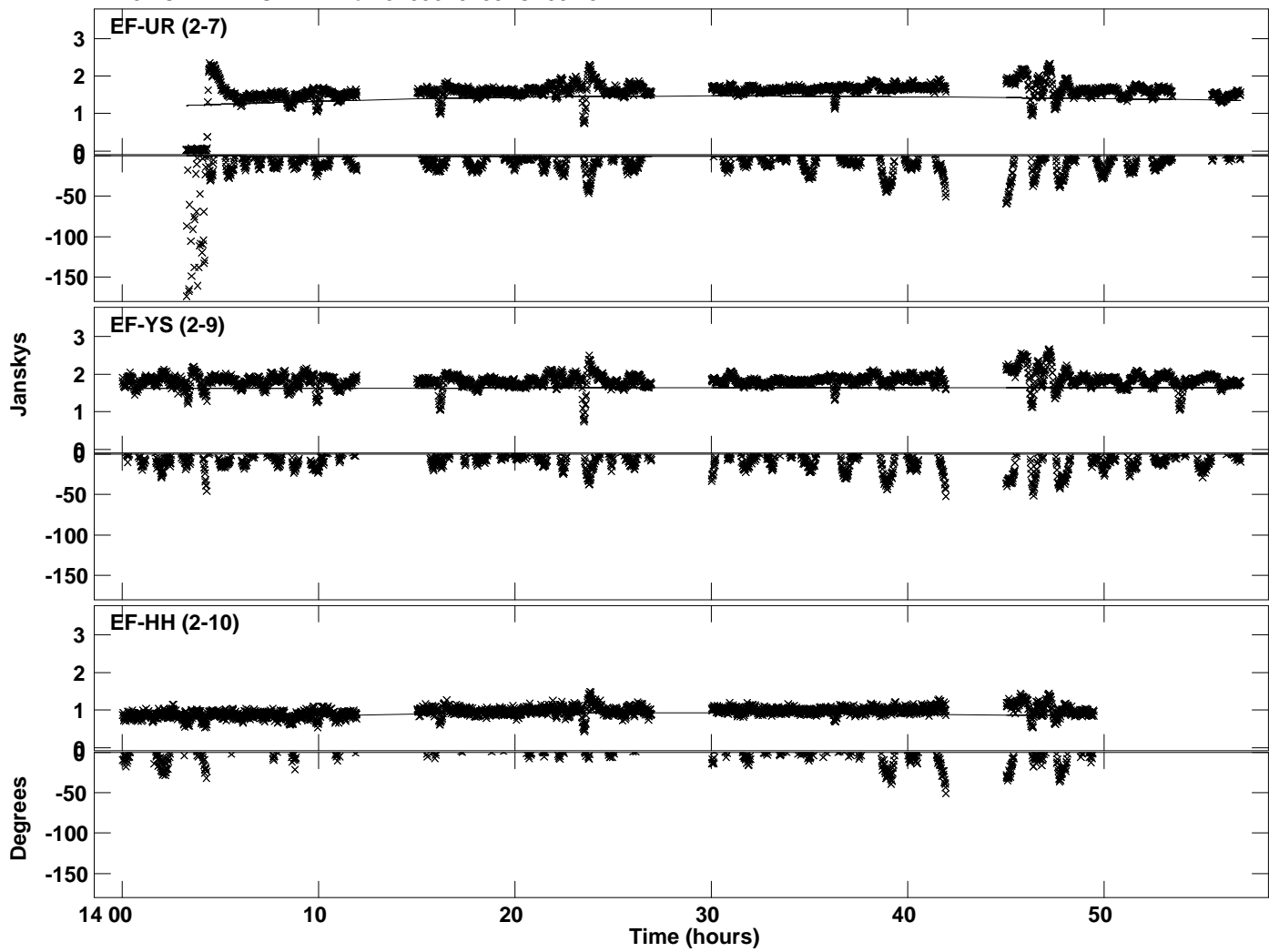
PLot file version 28 created 02-OCT-2023 16:25:30
Amplitude andPhase vs Time for J1058+0133.MULTI.1 CL # 3
IF 12 CHAN 1 STK RR of J1058+0133.ICL001.3



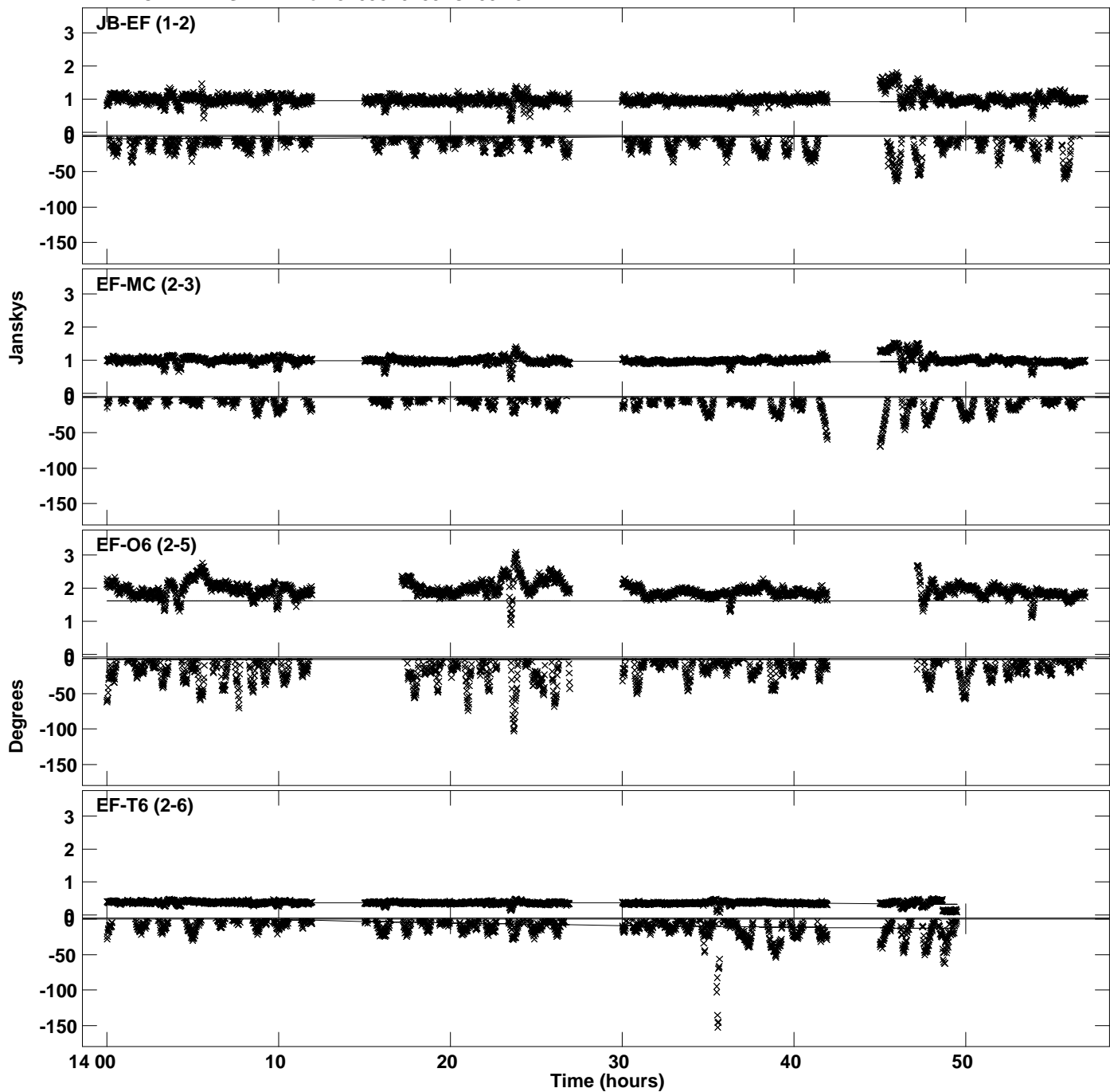
PLot file version 29 created 02-OCT-2023 16:25:33
Amplitude andPhase vs Time for J1058+0133.MULTI.1 CL # 3
IF 13 CHAN 1 STK RR of J1058+0133.ICL001.3



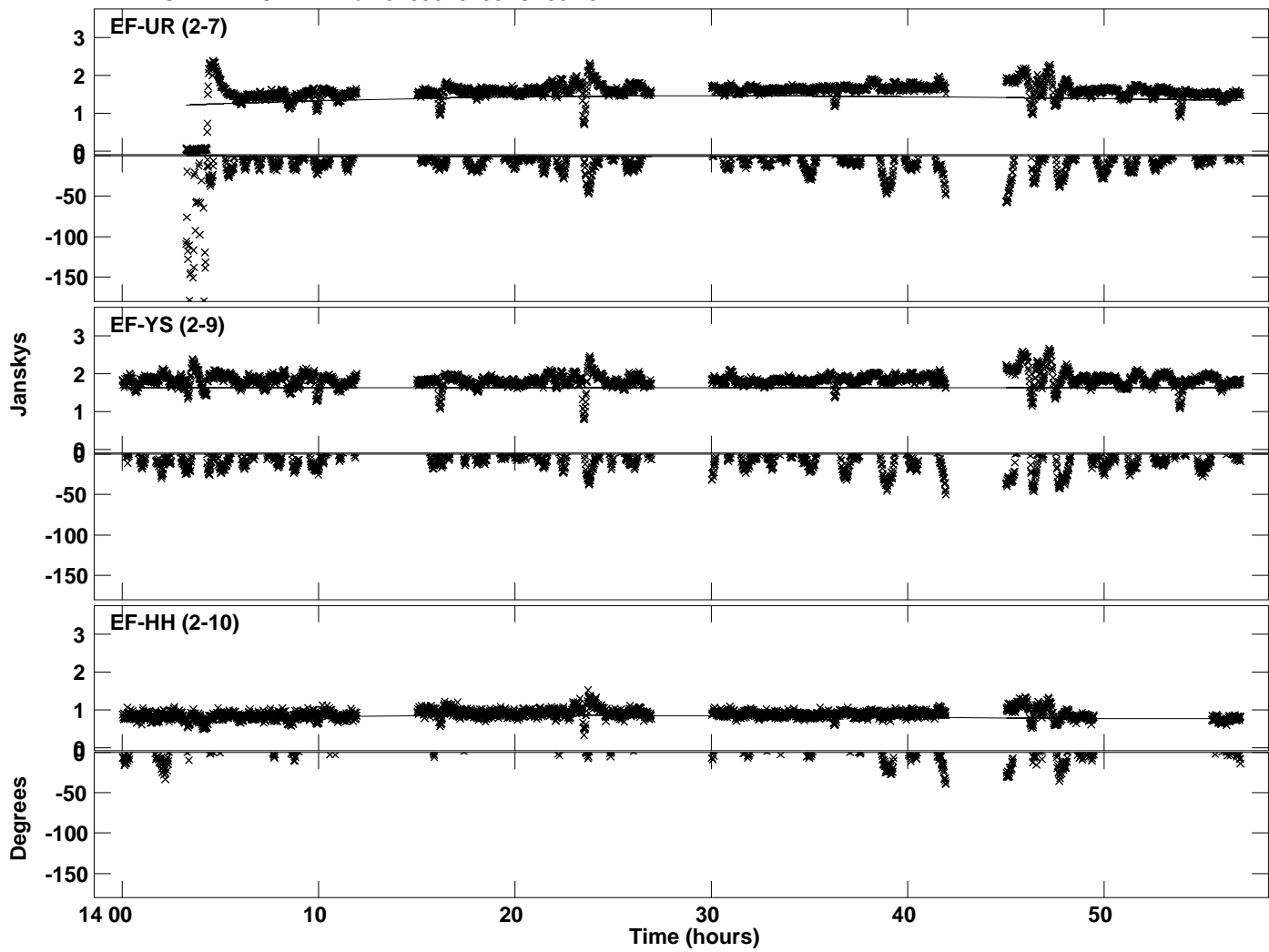
Plot file version 30 created 02-OCT-2023 16:25:33
Amplitude andPhase vs Time for J1058+0133.MULTI.1 CL # 3
IF 13 CHAN 1 STK RR of J1058+0133.ICL001.3



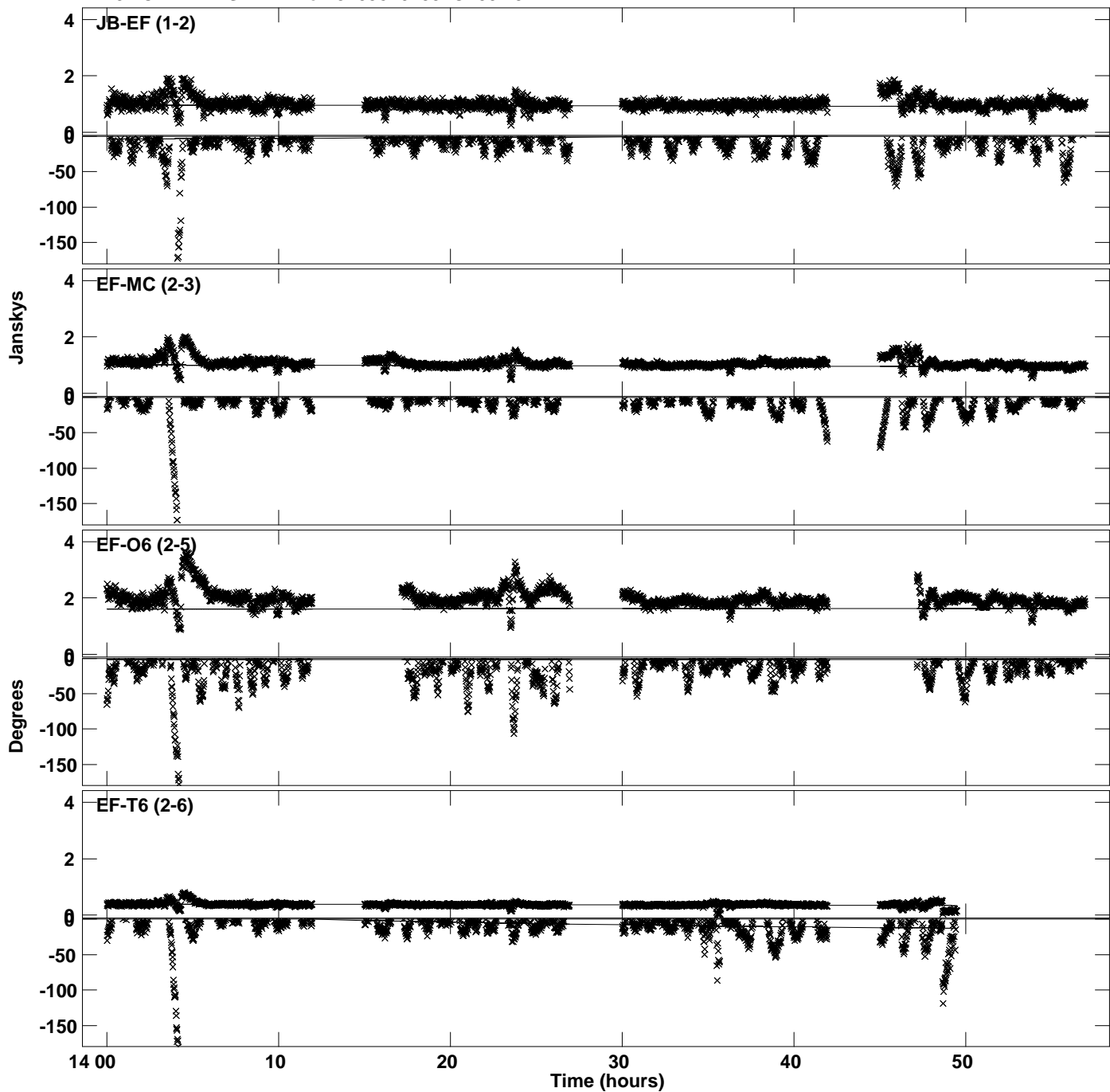
PLot file version 31 created 02-OCT-2023 16:25:35
Amplitude andPhase vs Time for J1058+0133.MULTI.1 CL # 3
IF 14 CHAN 1 STK RR of J1058+0133.ICL001.3



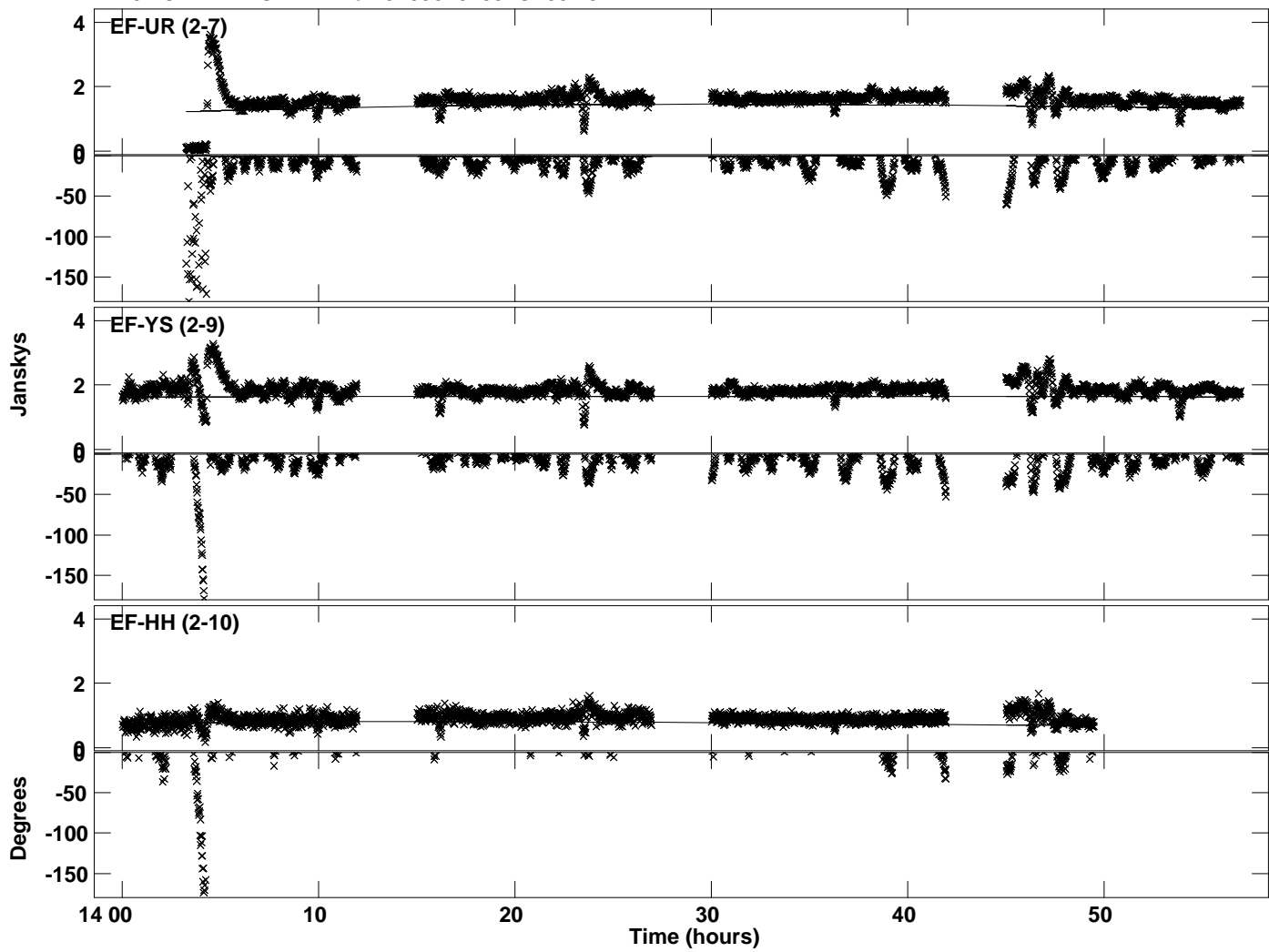
PLot file version 32 created 02-OCT-2023 16:25:35
Amplitude andPhase vs Time for J1058+0133.MULTI.1 CL # 3
IF 14 CHAN 1 STK RR of J1058+0133.ICL001.3



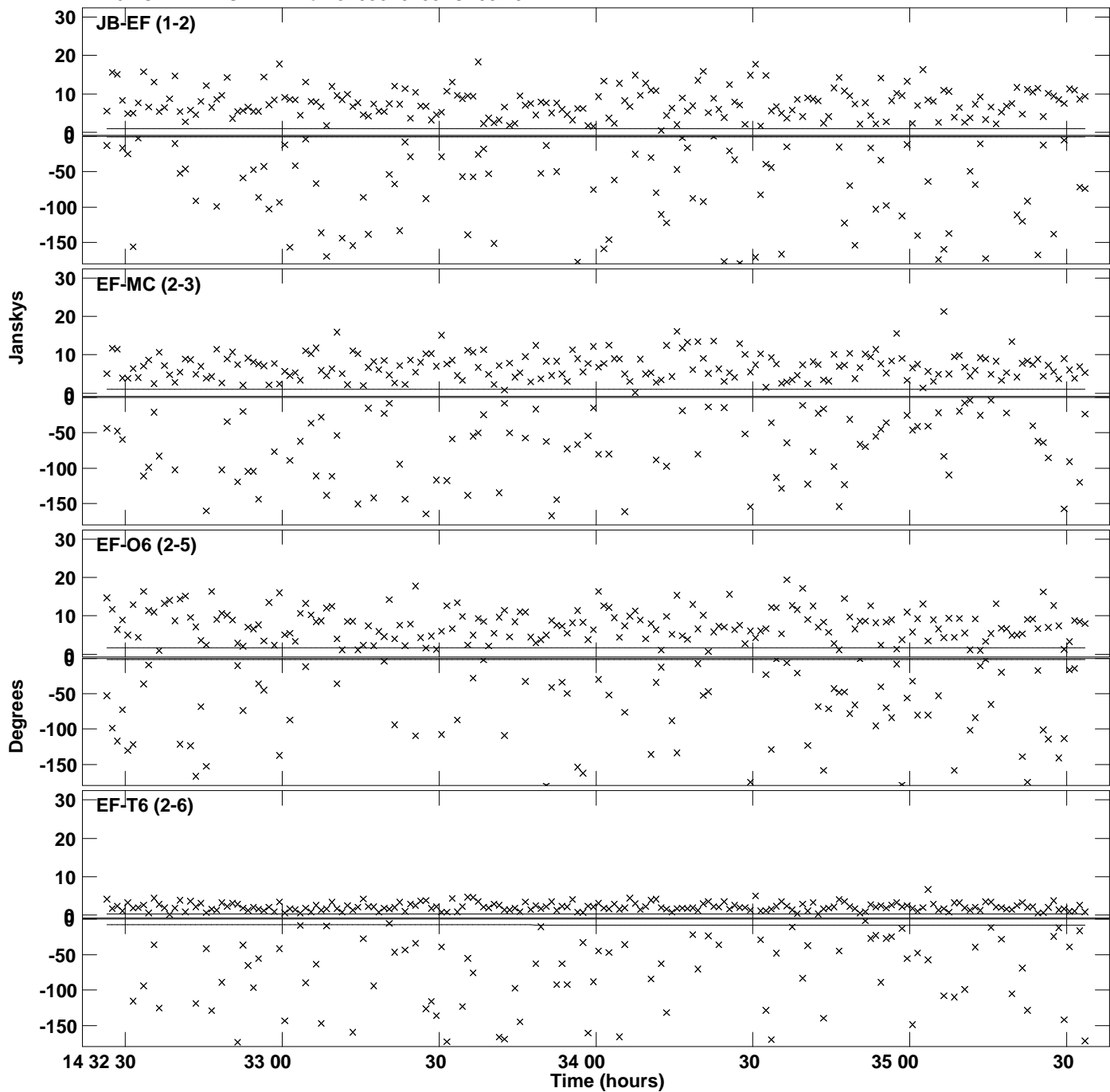
Plot file version 33 created 02-OCT-2023 16:25:38
Amplitude andPhase vs Time for J1058+0133.MULTI.1 CL # 3
IF 15 CHAN 1 STK RR of J1058+0133.ICL001.3



PLot file version 34 created 02-OCT-2023 16:25:38
Amplitude andPhase vs Time for J1058+0133.MULTI.1 CL # 3
IF 15 CHAN 1 STK RR of J1058+0133.ICL001.3



Plot file version 35 created 02-OCT-2023 16:25:41
Amplitude andPhase vs Time for J1058+0133.MULTI.1 CL # 3
IF 16 CHAN 1 STK RR of J1058+0133.ICL001.3



Plot file version 36 created 02-OCT-2023 16:25:41
Amplitude andPhase vs Time for J1058+0133.MULTI.1 CL # 3
IF 16 CHAN 1 STK RR of J1058+0133.ICL001.3

