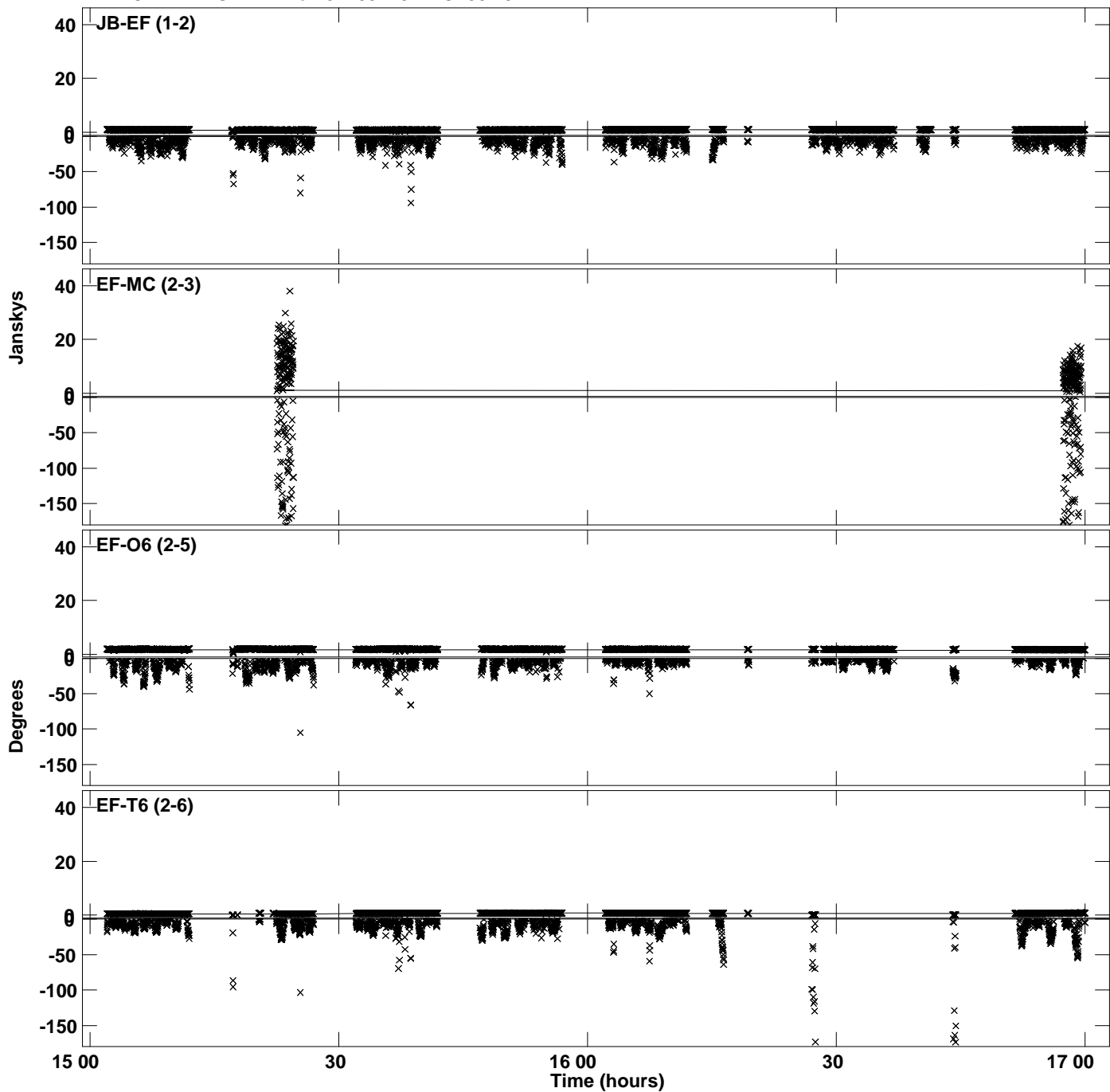
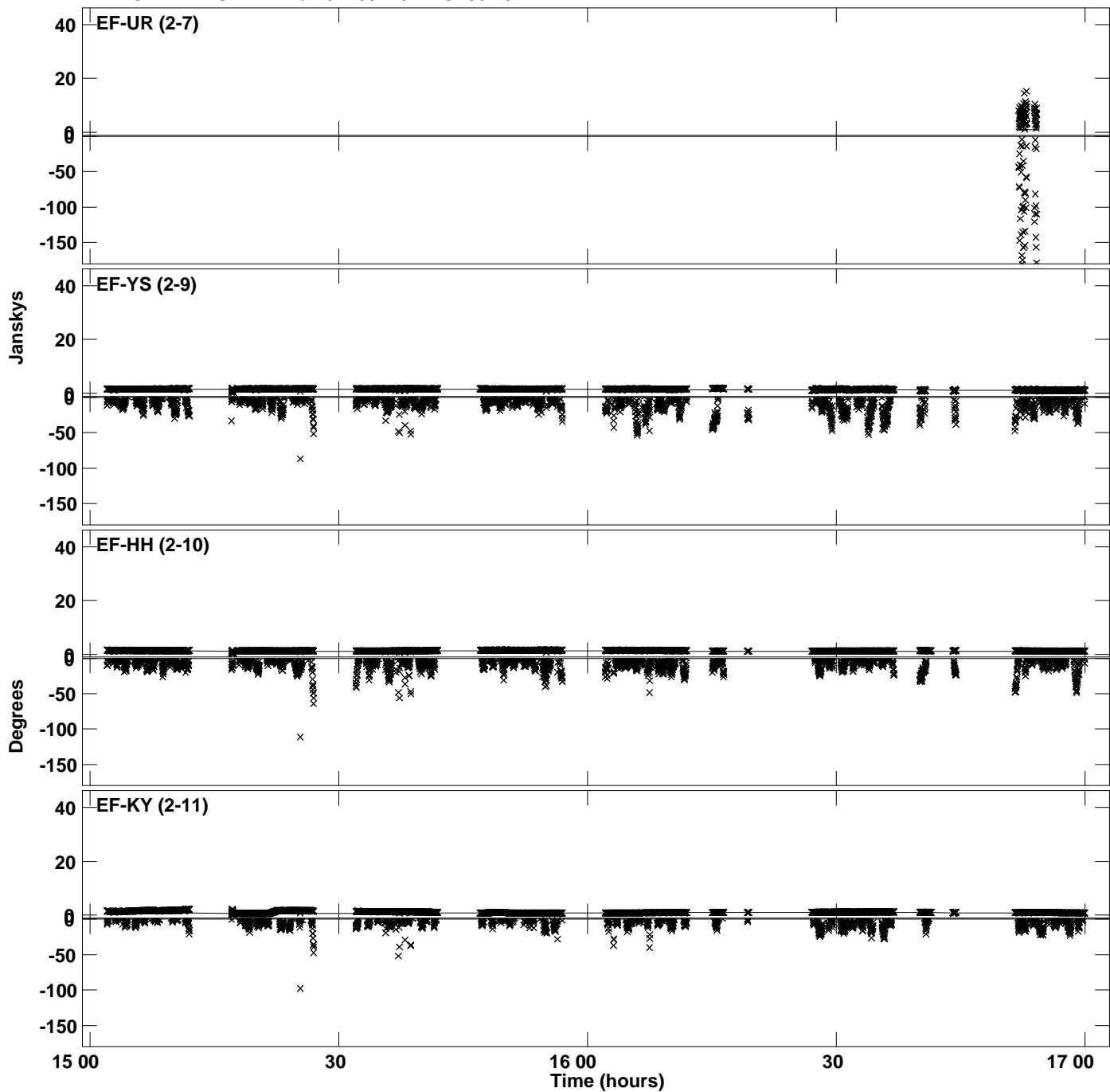


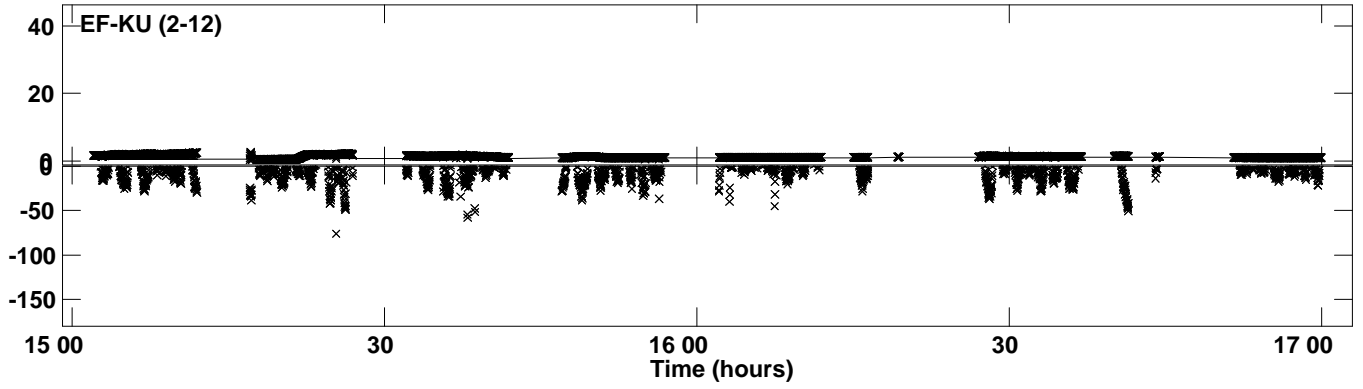
Plot file version 1 created 02-OCT-2023 16:26:18
Amplitude and Phase vs Time for J1159+2914.MULTI.1 CL # 3
IF 1 CHAN 1 STK RR of J1159+2914.ICL001.3



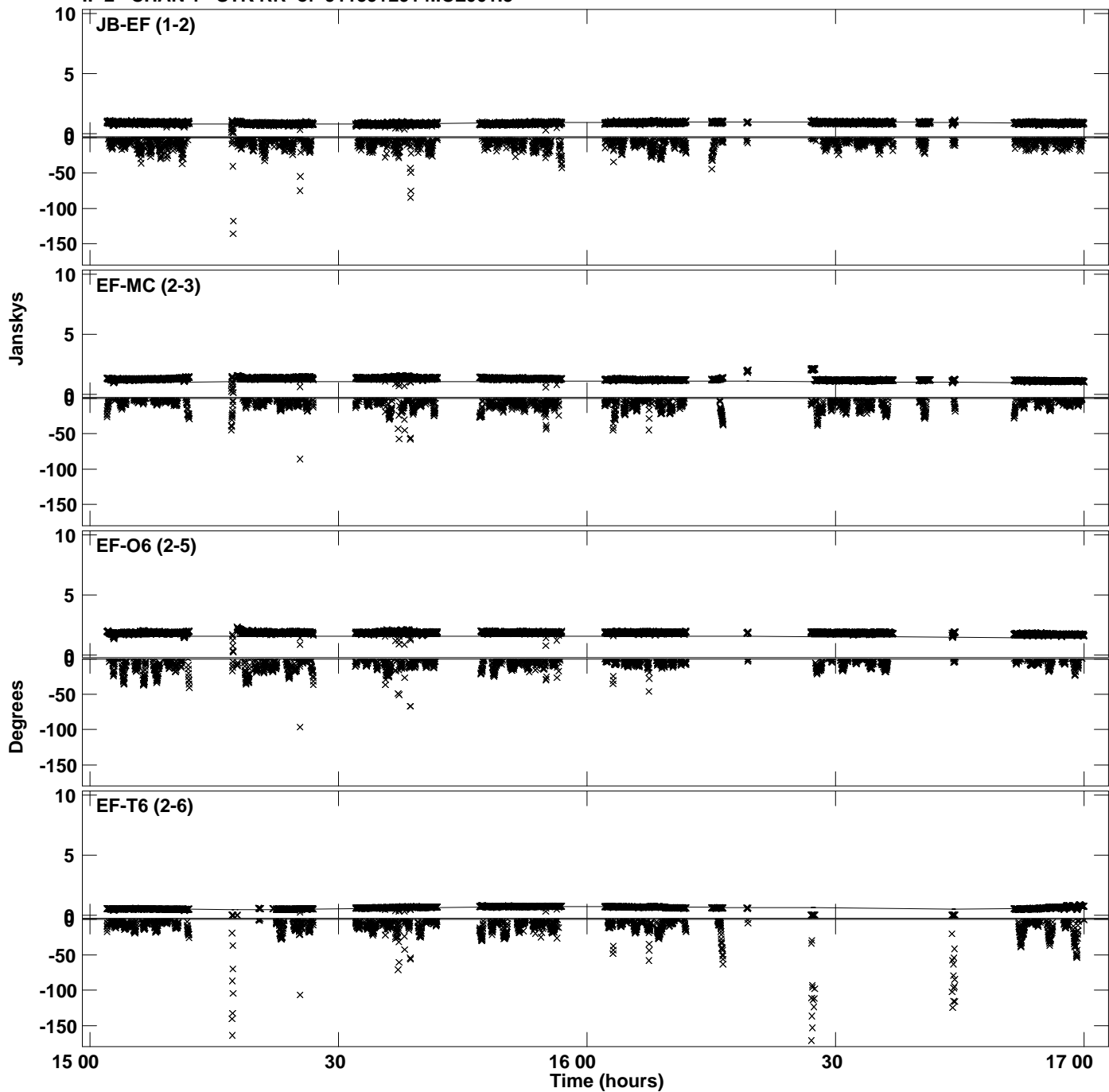
Plot file version 2 created 02-OCT-2023 16:26:18
Amplitude and Phase vs Time for J1159+2914.MULTI.1 CL # 3
IF 1 CHAN 1 STK RR of J1159+2914.ICL001.3



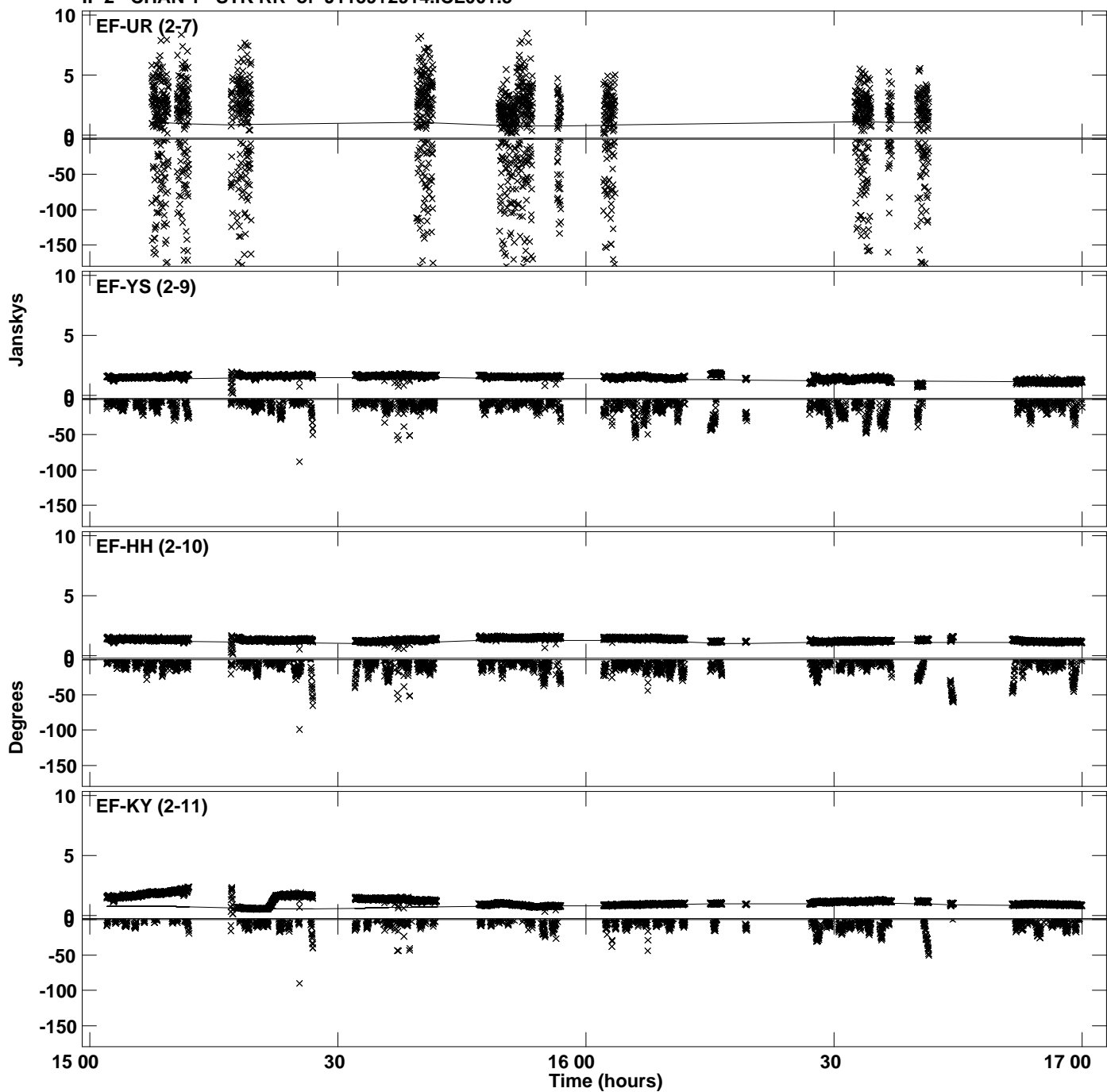
PLot file version 3 created 02-OCT-2023 16:26:18
Amplitude andPhase vs Time for J1159+2914.MULTI.1 CL # 3
IF 1 CHAN 1 STK RR of J1159+2914.ICL001.3



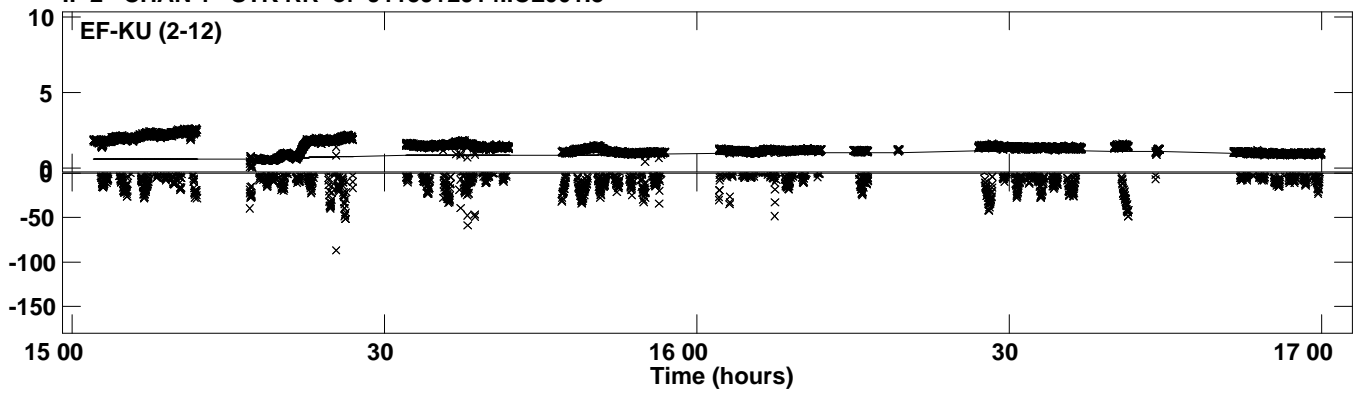
Plot file version 4 created 02-OCT-2023 16:26:21
Amplitude andPhase vs Time for J1159+2914.MULTI.1 CL # 3
IF 2 CHAN 1 STK RR of J1159+2914.ICL001.3



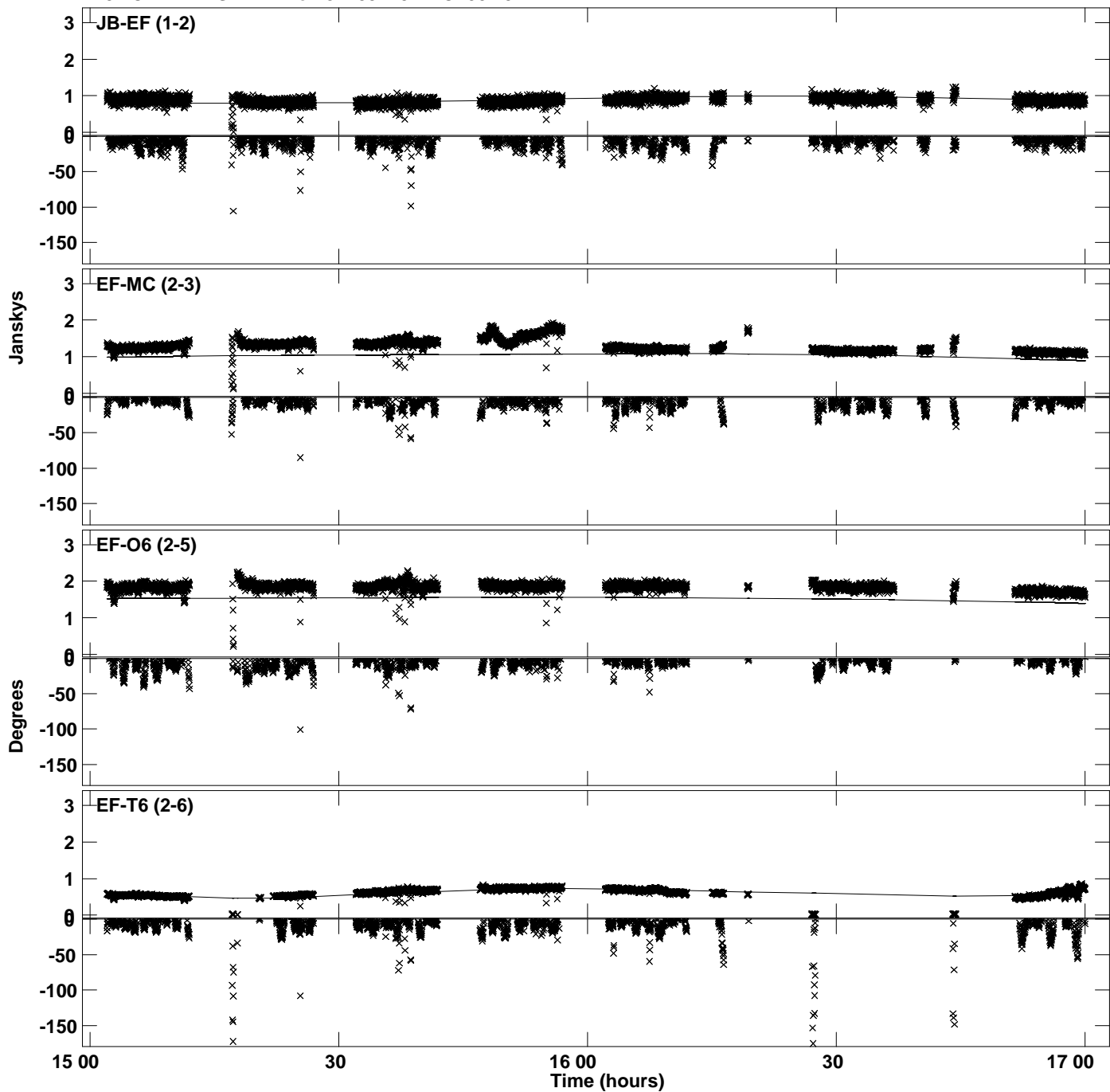
Plot file version 5 created 02-OCT-2023 16:26:21
Amplitude and Phase vs Time for J1159+2914.MULTI.1 CL # 3
IF 2 CHAN 1 STK RR of J1159+2914.ICL001.3



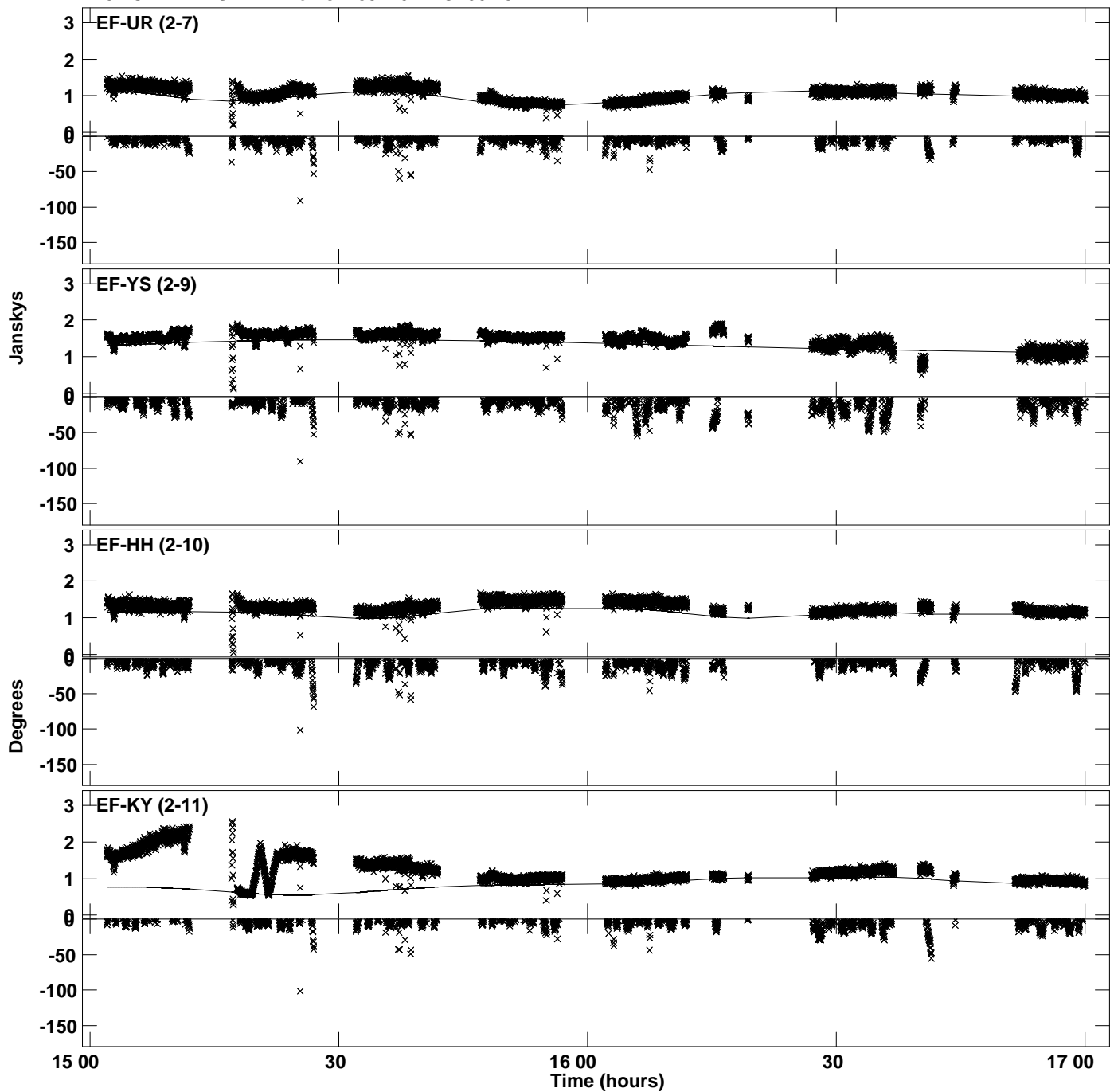
PLot file version 6 created 02-OCT-2023 16:26:21
Amplitude andPhase vs Time for J1159+2914.MULTI.1 CL # 3
IF 2 CHAN 1 STK RR of J1159+2914.ICL001.3



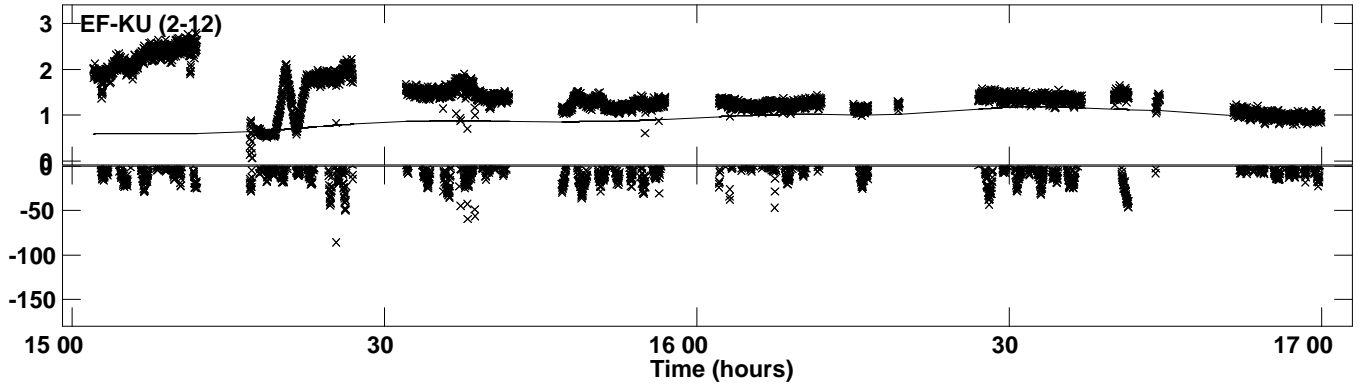
Plot file version 7 created 02-OCT-2023 16:26:24
Amplitude and Phase vs Time for J1159+2914.MULTI.1 CL # 3
IF 3 CHAN 1 STK RR of J1159+2914.ICL001.3



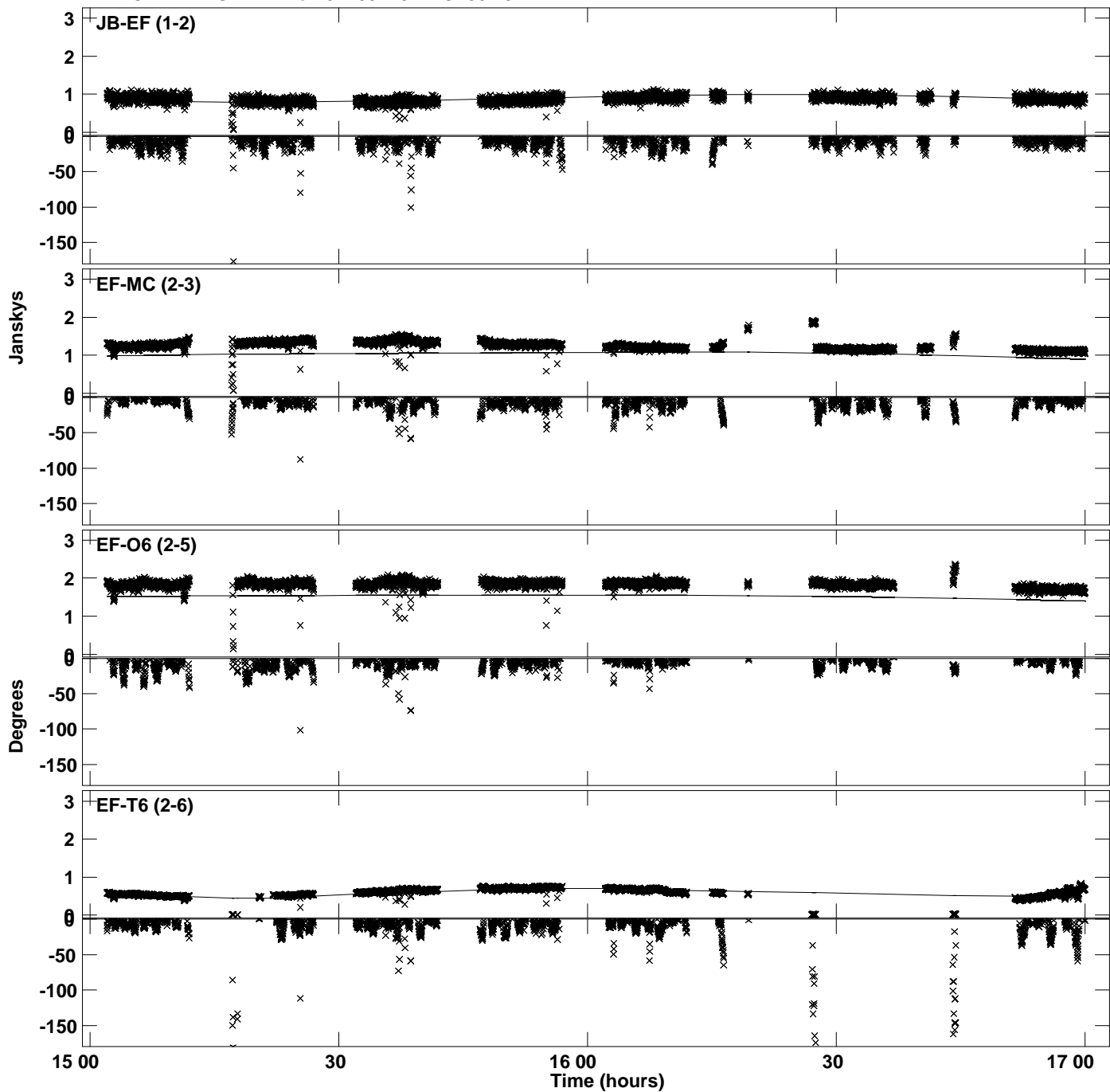
Plot file version 8 created 02-OCT-2023 16:26:24
Amplitude and Phase vs Time for J1159+2914.MULTI.1 CL # 3
IF 3 CHAN 1 STK RR of J1159+2914.ICL001.3



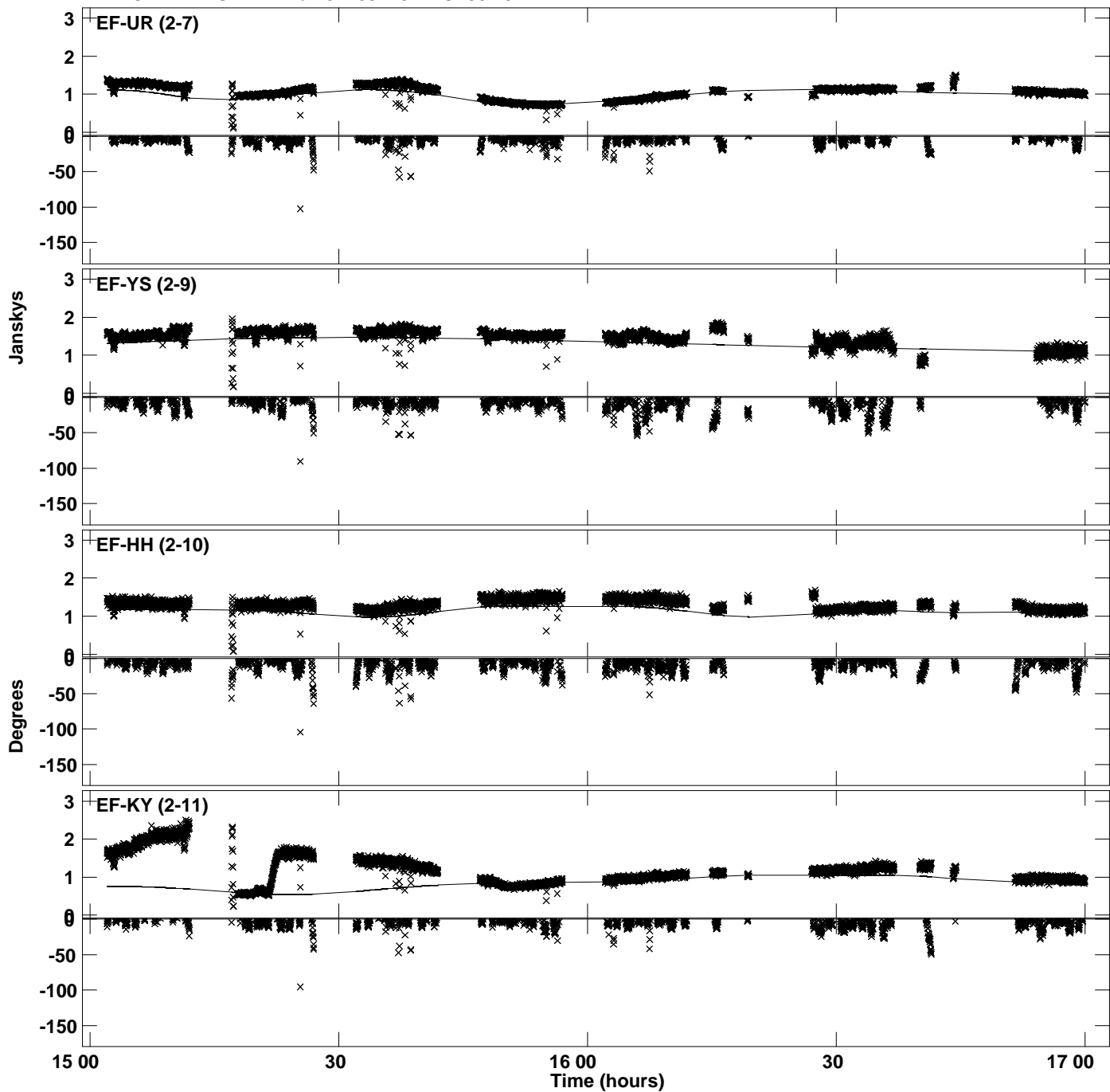
Plot file version 9 created 02-OCT-2023 16:26:24
Amplitude and Phase vs Time for J1159+2914.MULTI.1 CL # 3
IF 3 CHAN 1 STK RR of J1159+2914.ICL001.3



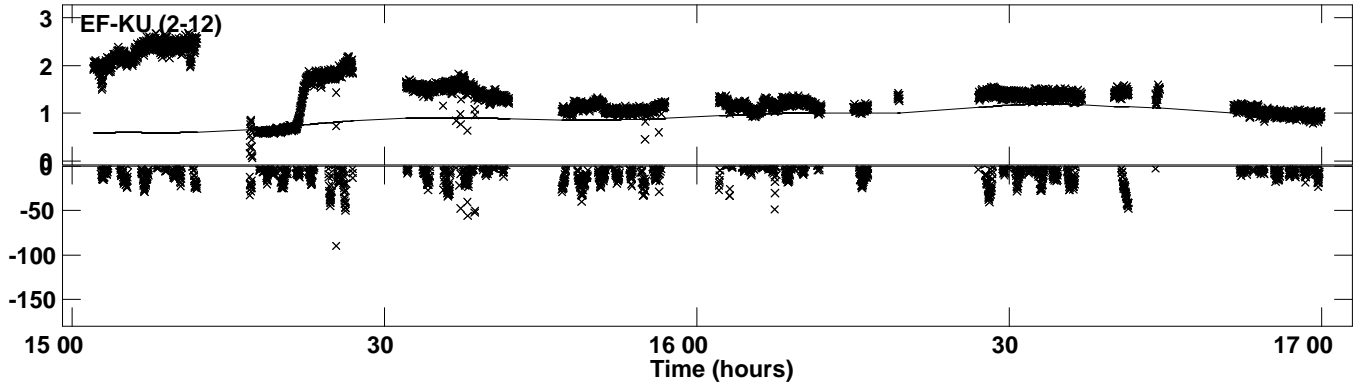
Plot file version 10 created 02-OCT-2023 16:26:27
Amplitude and Phase vs Time for J1159+2914.MULTI.1 CL # 3
IF 4 CHAN 1 STK RR of J1159+2914.ICL001.3



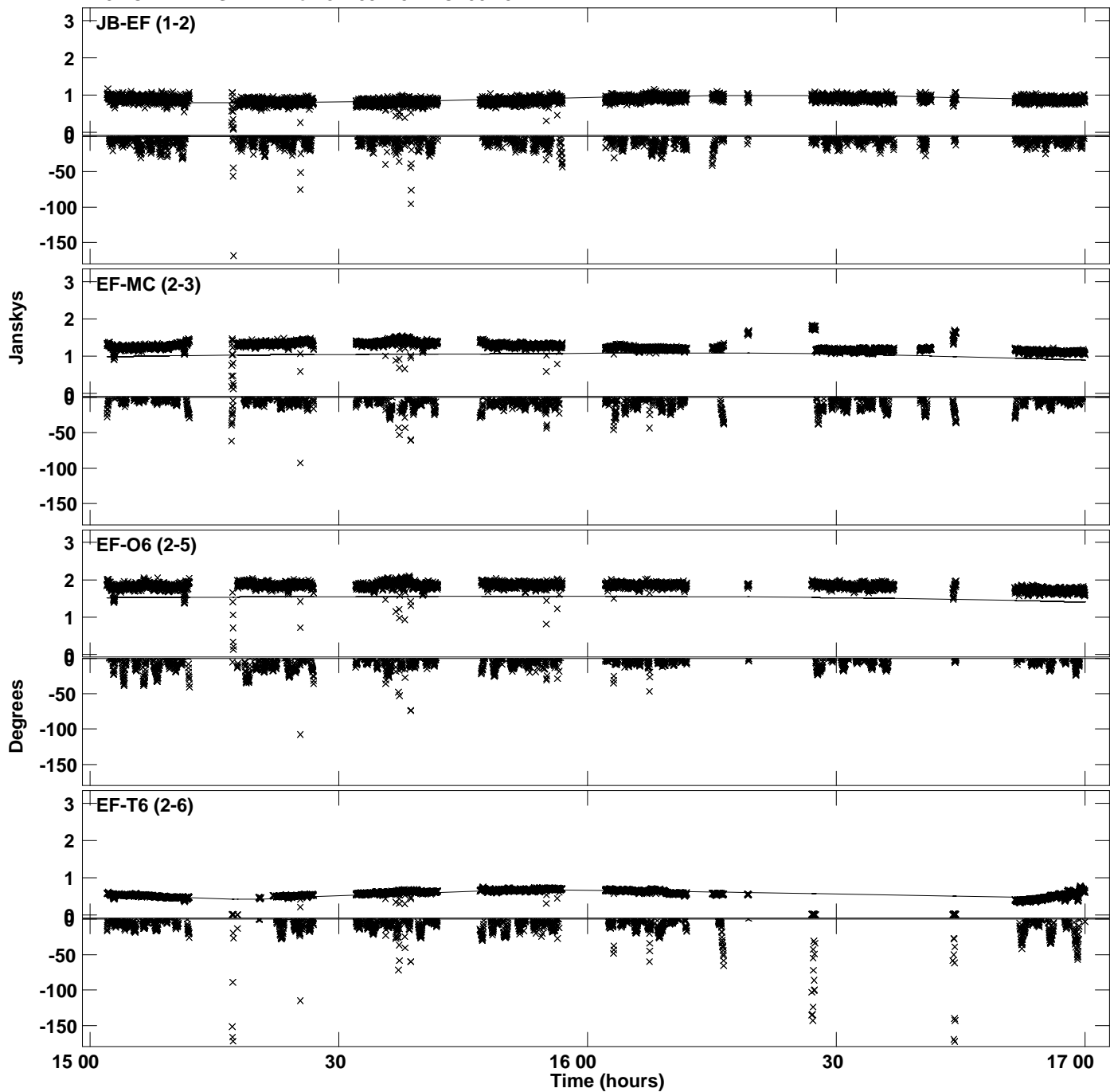
Plot file version 11 created 02-OCT-2023 16:26:27
Amplitude and Phase vs Time for J1159+2914.MULTI.1 CL # 3
IF 4 CHAN 1 STK RR of J1159+2914.ICL001.3



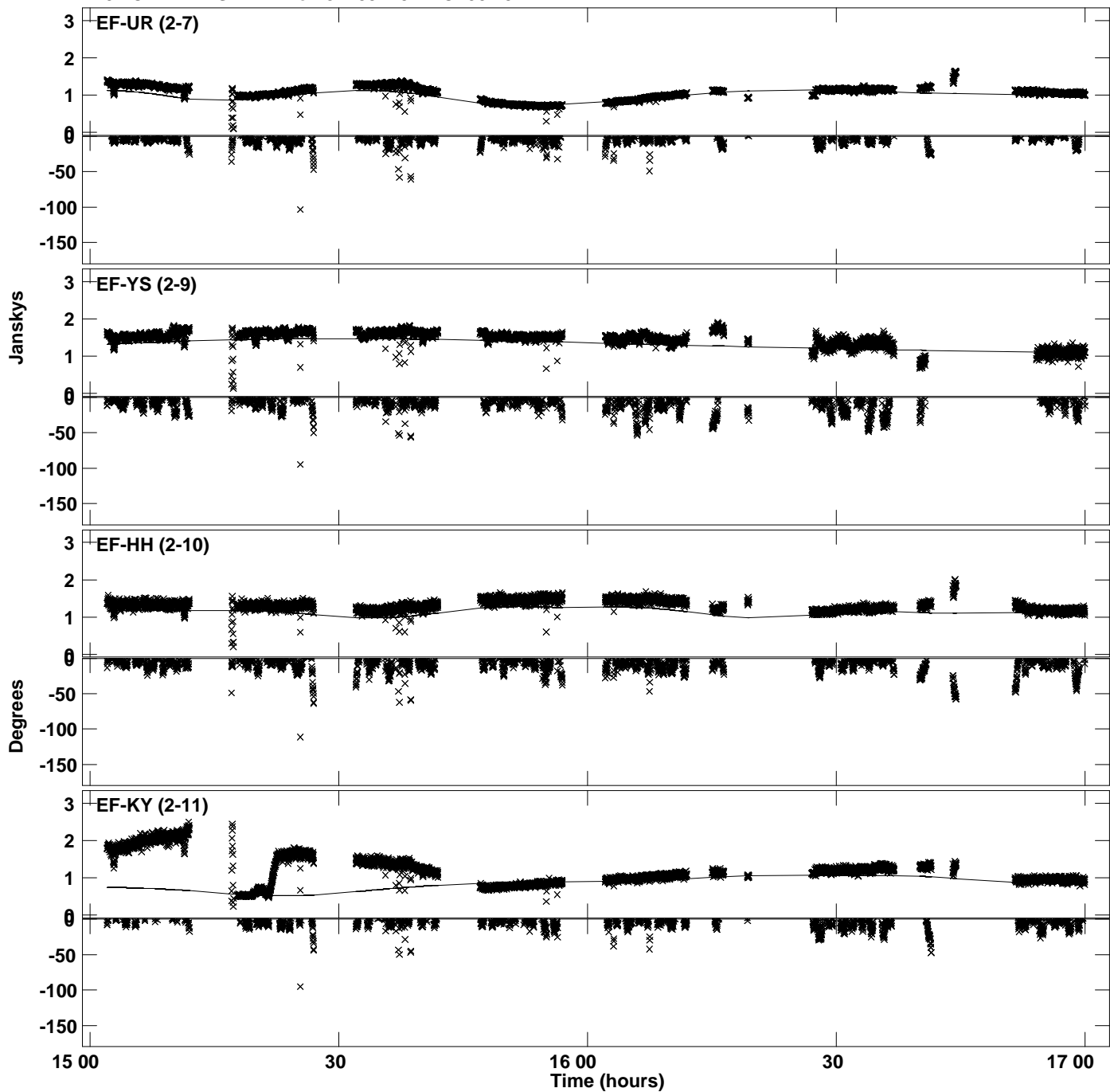
Plot file version 12 created 02-OCT-2023 16:26:27
Amplitude and Phase vs Time for J1159+2914.MULTI.1 CL # 3
IF 4 CHAN 1 STK RR of J1159+2914.ICL001.3



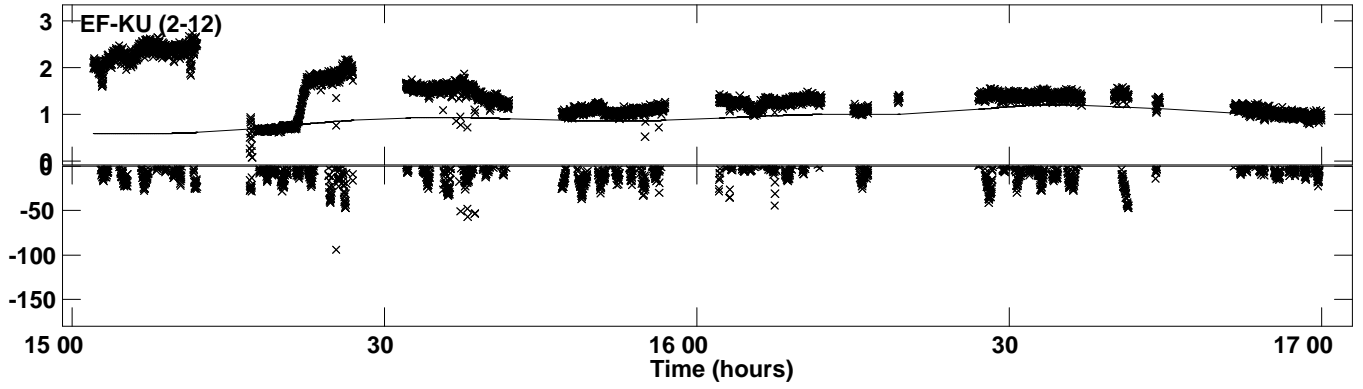
Plot file version 13 created 02-OCT-2023 16:26:29
Amplitude and Phase vs Time for J1159+2914.MULTI.1 CL # 3
IF 5 CHAN 1 STK RR of J1159+2914.ICL001.3



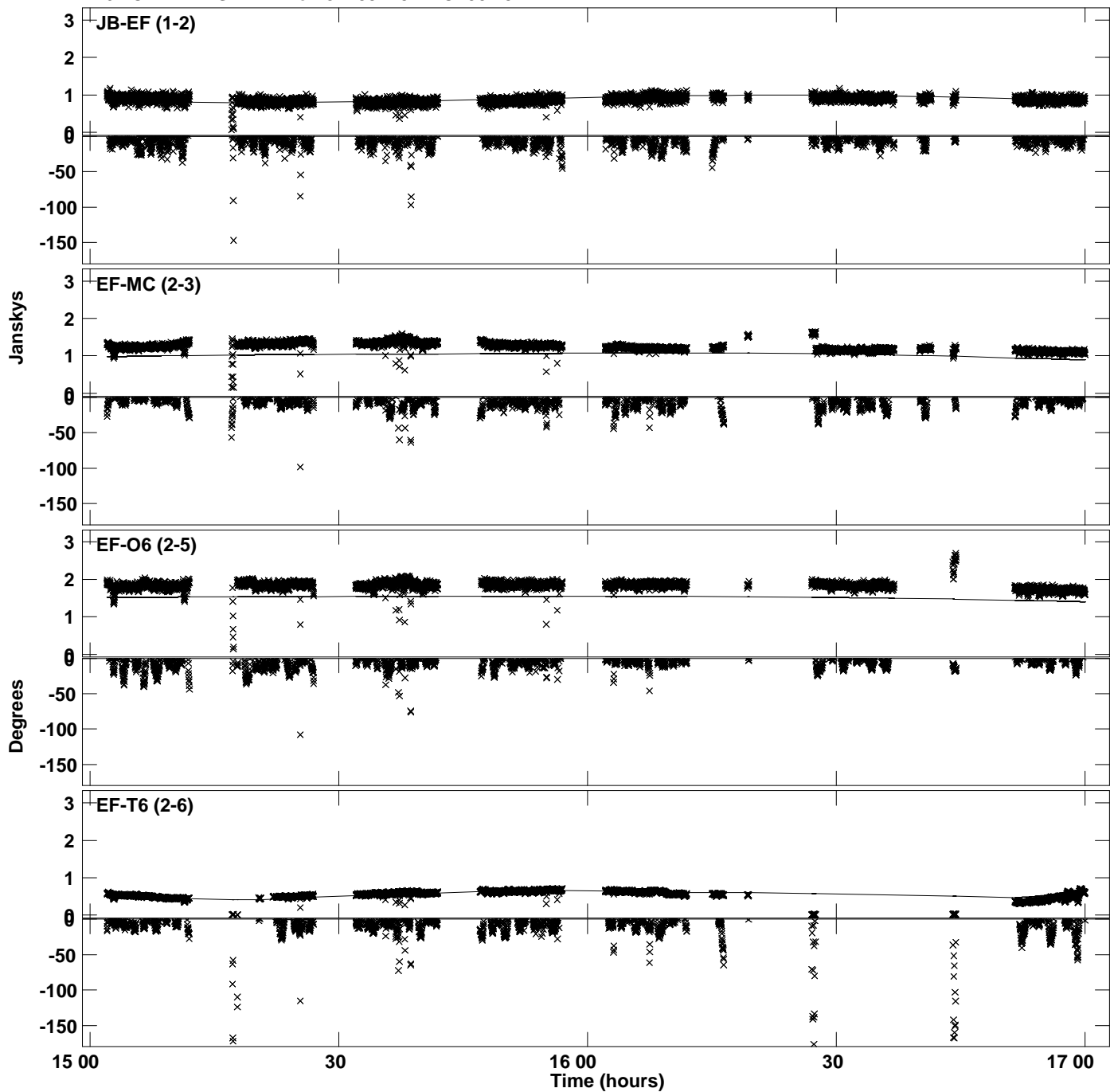
Plot file version 14 created 02-OCT-2023 16:26:29
Amplitude andPhase vs Time for J1159+2914.MULTI.1 CL # 3
IF 5 CHAN 1 STK RR of J1159+2914.ICL001.3



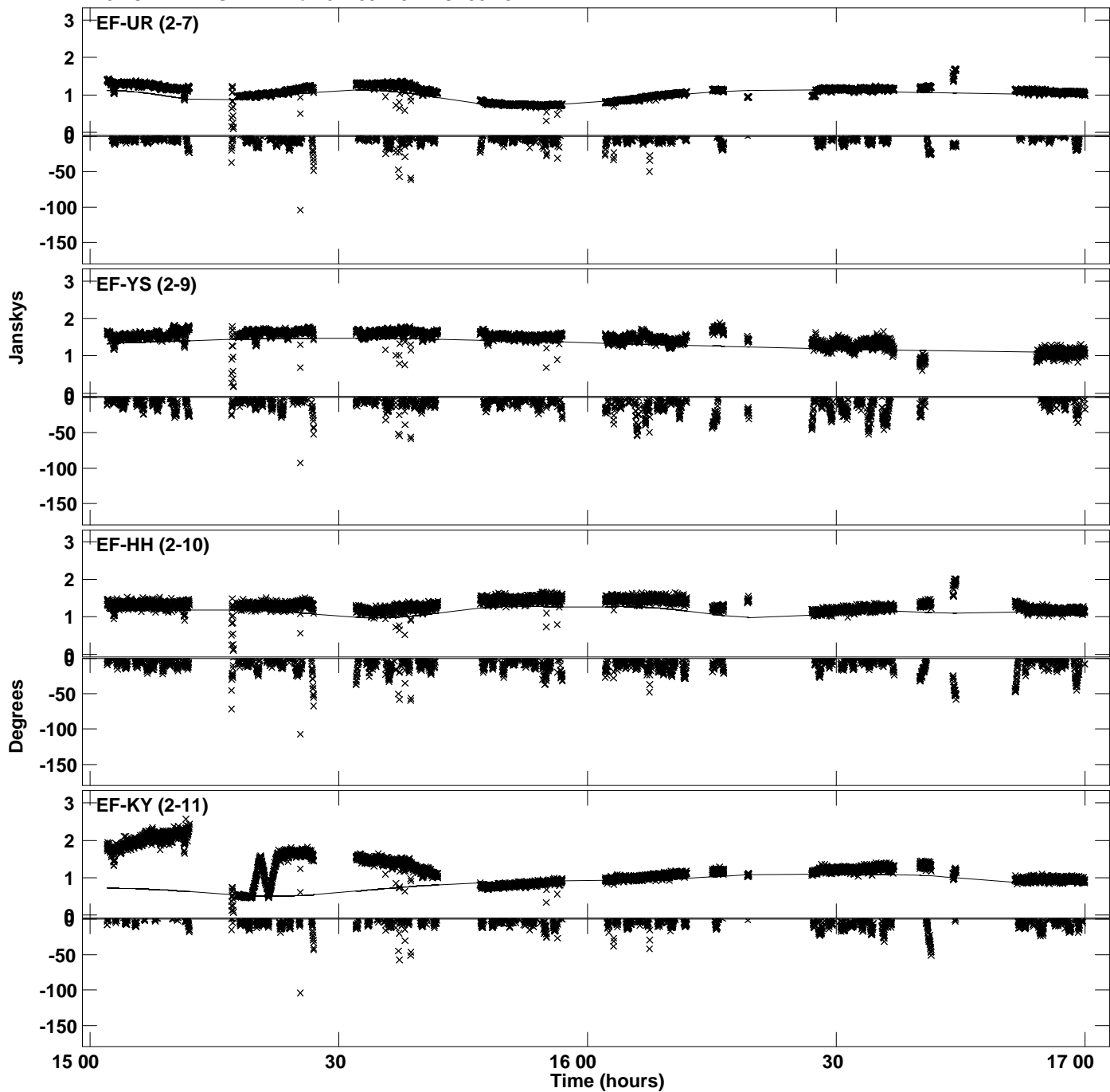
Plot file version 15 created 02-OCT-2023 16:26:29
Amplitude and Phase vs Time for J1159+2914.MULTI.1 CL # 3
IF 5 CHAN 1 STK RR of J1159+2914.ICL001.3



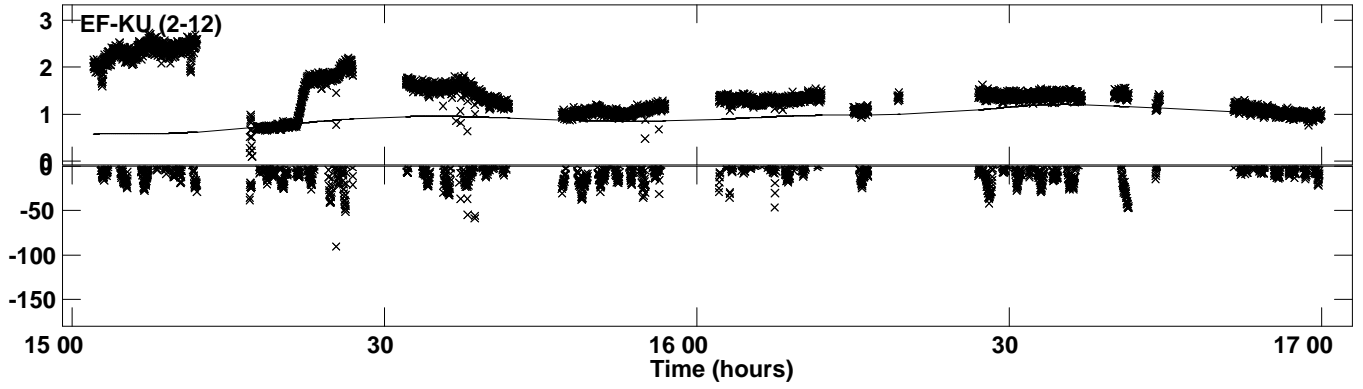
Plot file version 16 created 02-OCT-2023 16:26:32
Amplitude and Phase vs Time for J1159+2914.MULTI.1 CL # 3
IF 6 CHAN 1 STK RR of J1159+2914.ICL001.3



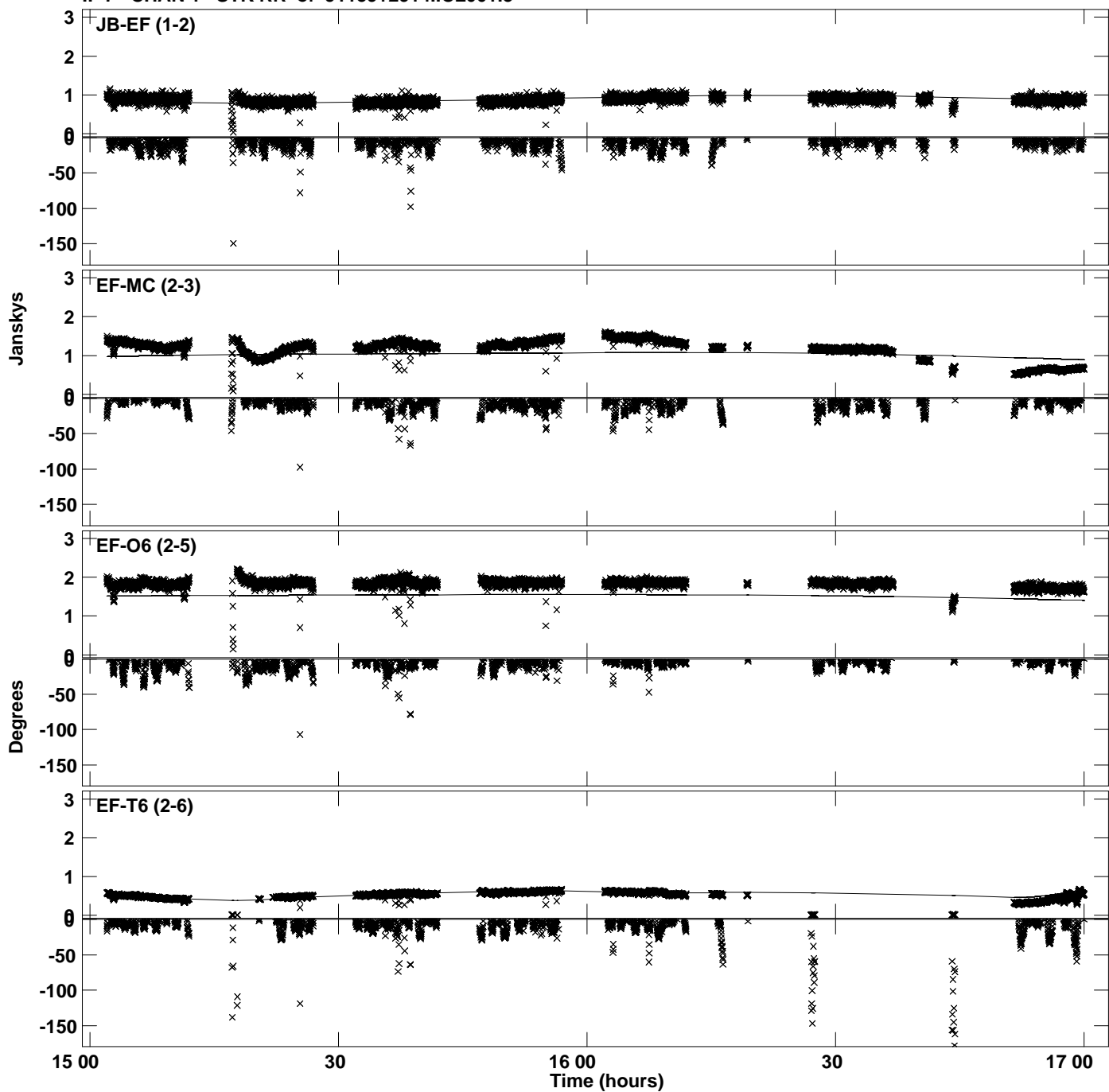
Plot file version 17 created 02-OCT-2023 16:26:32
Amplitude and Phase vs Time for J1159+2914.MULTI.1 CL # 3
IF 6 CHAN 1 STK RR of J1159+2914.ICL001.3



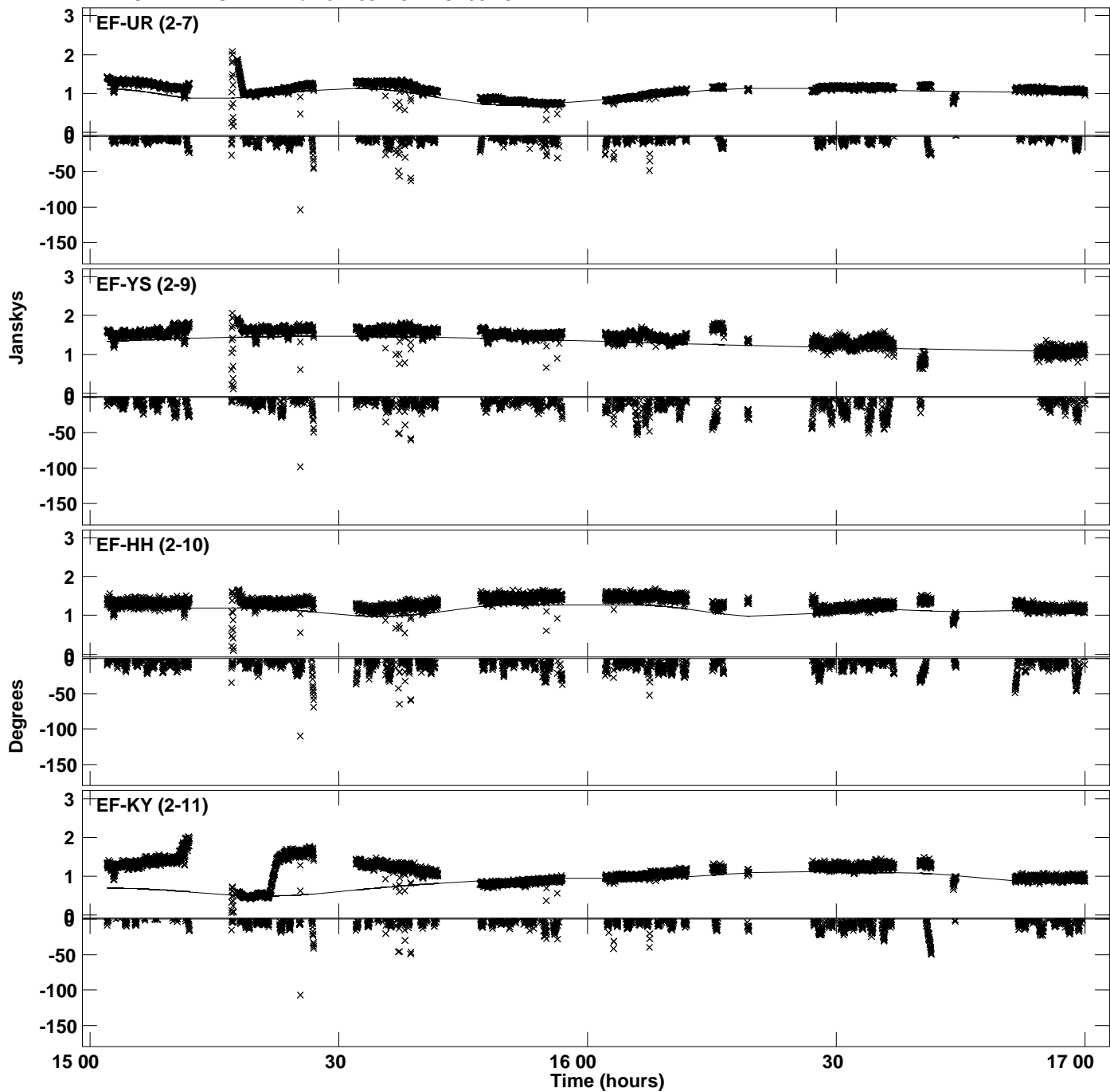
Plot file version 18 created 02-OCT-2023 16:26:32
Amplitude and Phase vs Time for J1159+2914.MULTI.1 CL # 3
IF 6 CHAN 1 STK RR of J1159+2914.ICL001.3



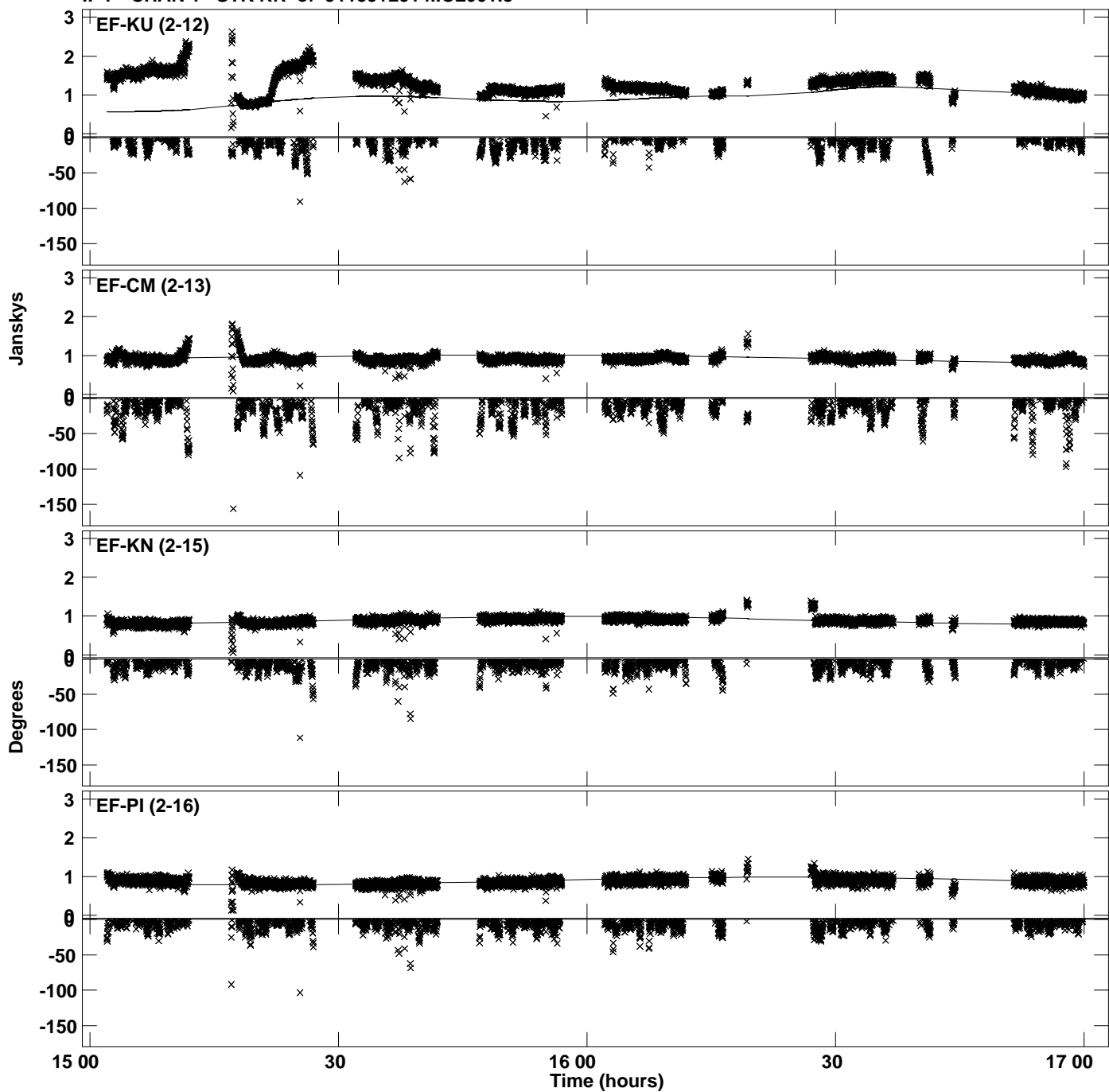
Plot file version 19 created 02-OCT-2023 16:26:35
Amplitude and Phase vs Time for J1159+2914.MULTI.1 CL # 3
IF 7 CHAN 1 STK RR of J1159+2914.ICL001.3



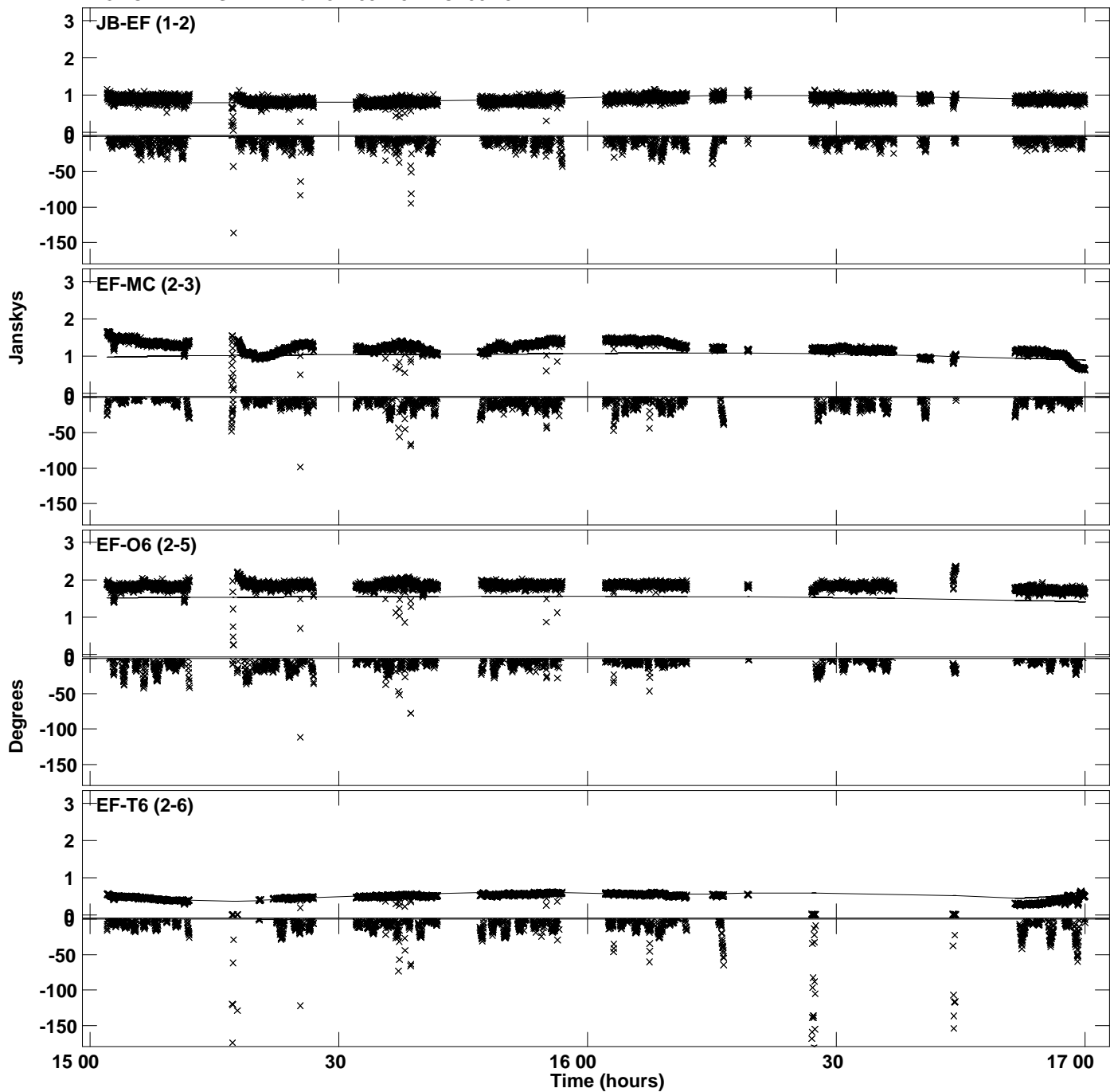
Plot file version 20 created 02-OCT-2023 16:26:35
Amplitude andPhase vs Time for J1159+2914.MULTI.1 CL # 3
IF 7 CHAN 1 STK RR of J1159+2914.ICL001.3



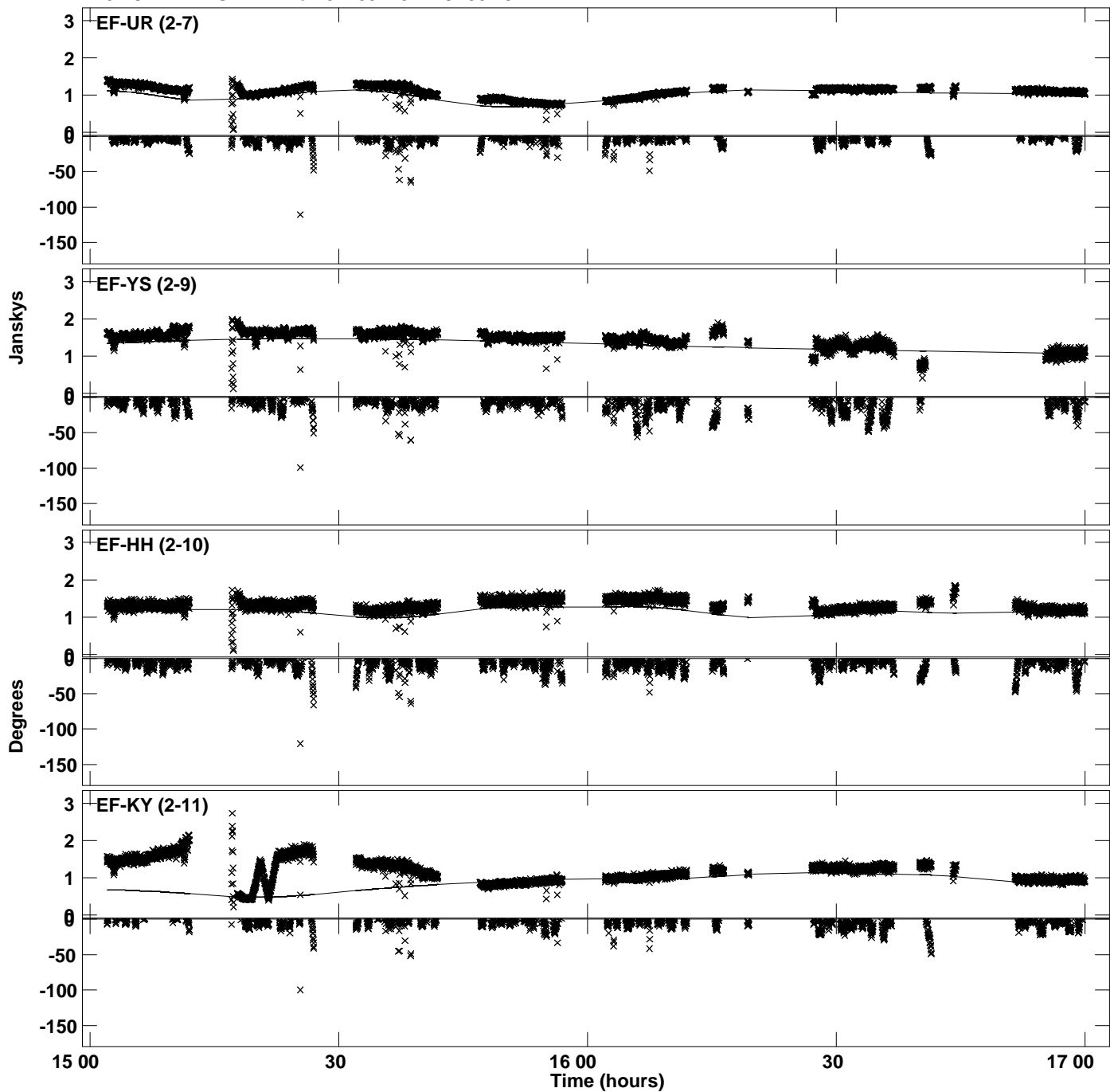
Plot file version 21 created 02-OCT-2023 16:26:35
Amplitude and Phase vs Time for J1159+2914.MULTI.1 CL # 3
IF 7 CHAN 1 STK RR of J1159+2914.ICL001.3



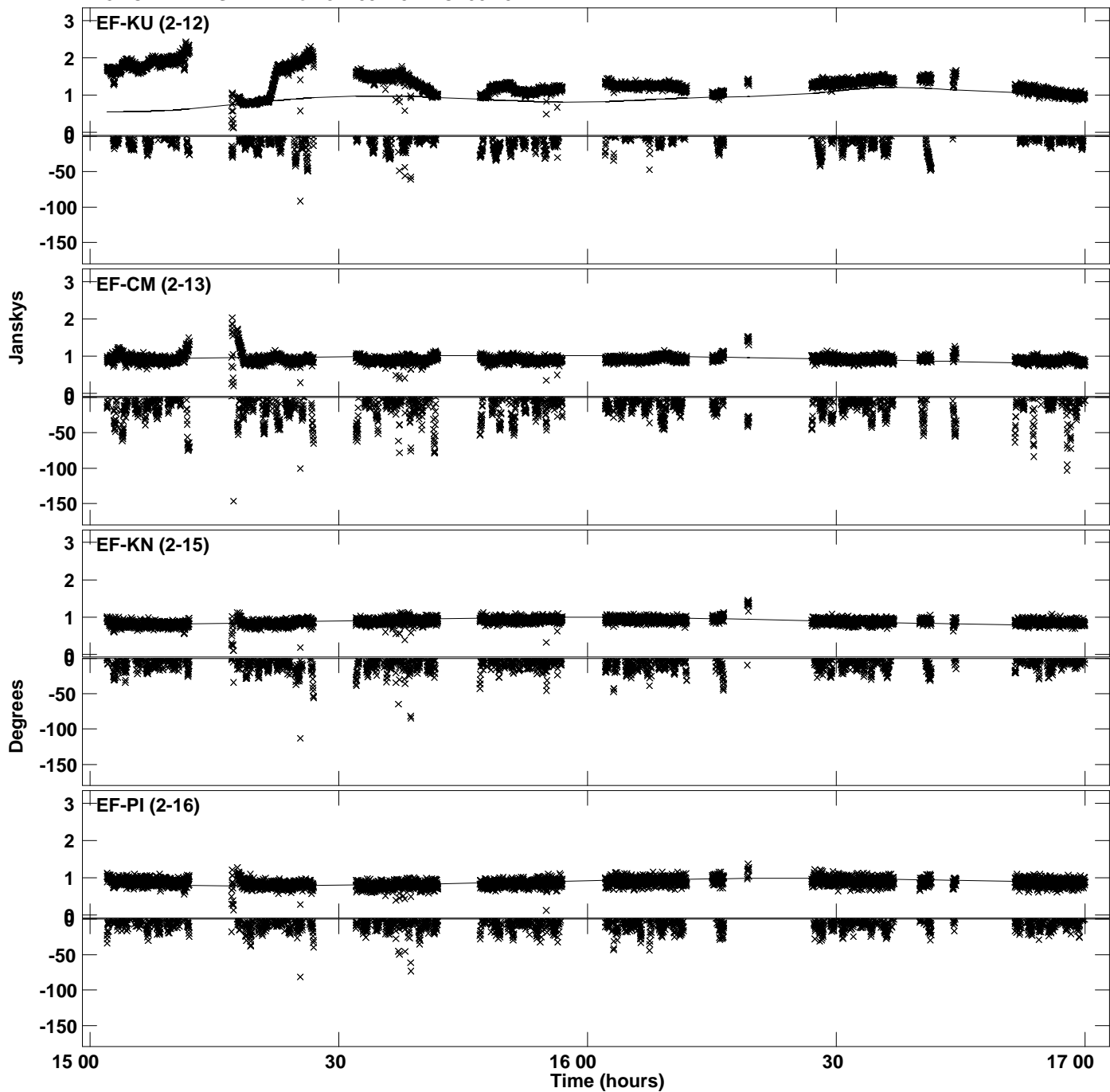
Plot file version 22 created 02-OCT-2023 16:26:39
Amplitude and Phase vs Time for J1159+2914.MULTI.1 CL # 3
IF 8 CHAN 1 STK RR of J1159+2914.ICL001.3



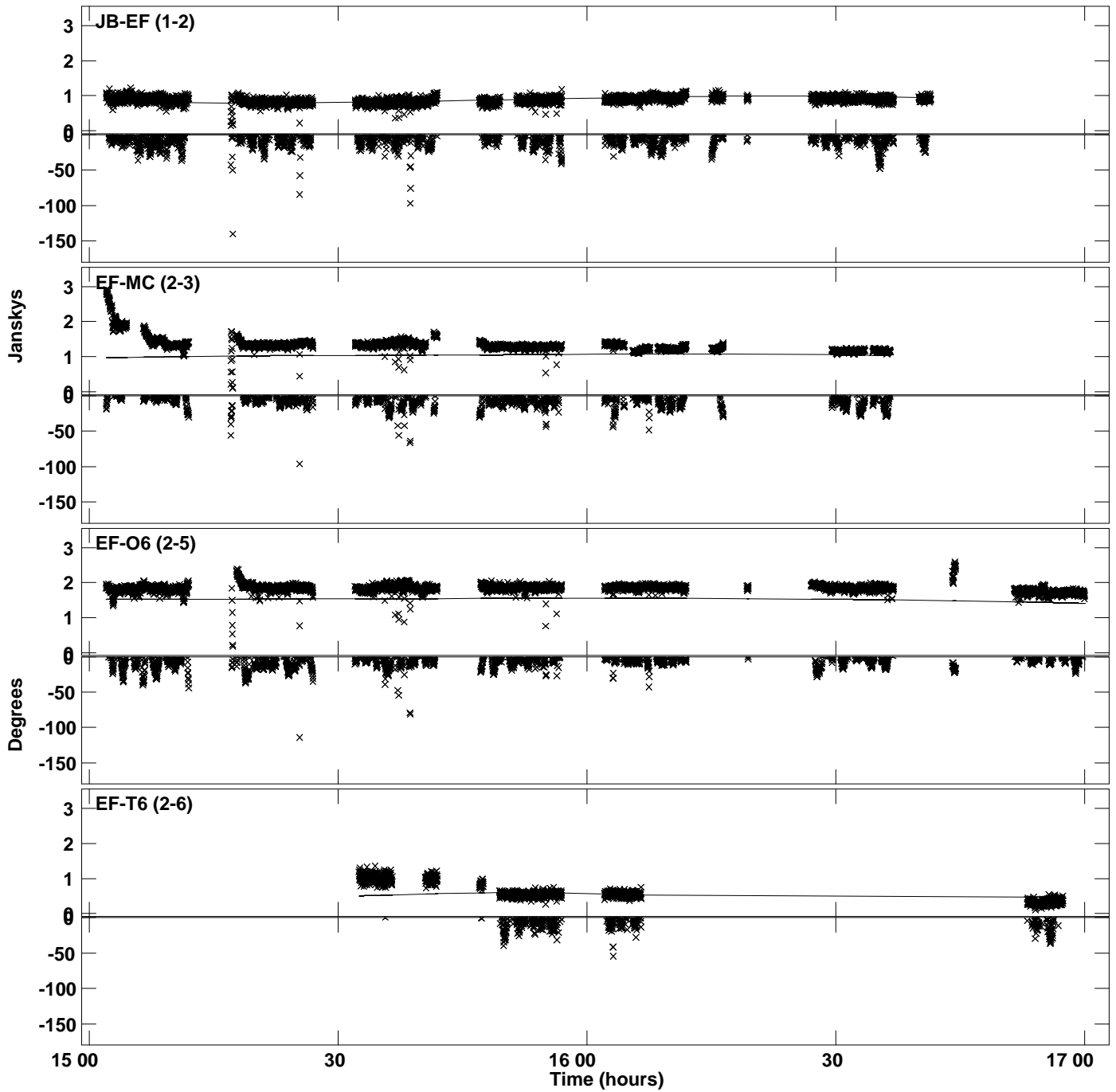
Plot file version 23 created 02-OCT-2023 16:26:39
Amplitude andPhase vs Time for J1159+2914.MULTI.1 CL # 3
IF 8 CHAN 1 STK RR of J1159+2914.ICL001.3



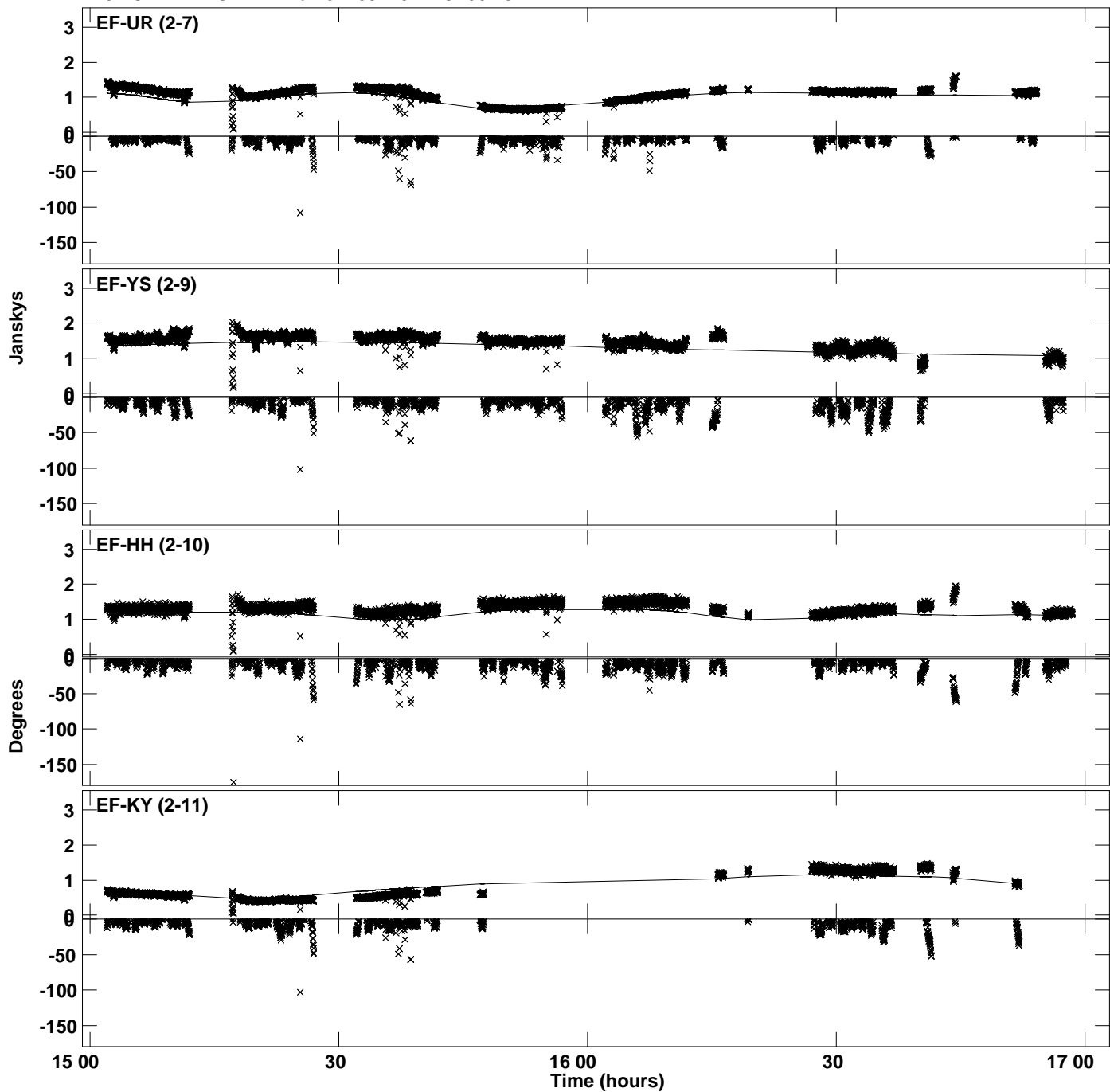
Plot file version 24 created 02-OCT-2023 16:26:39
Amplitude and Phase vs Time for J1159+2914.MULTI.1 CL # 3
IF 8 CHAN 1 STK RR of J1159+2914.ICL001.3



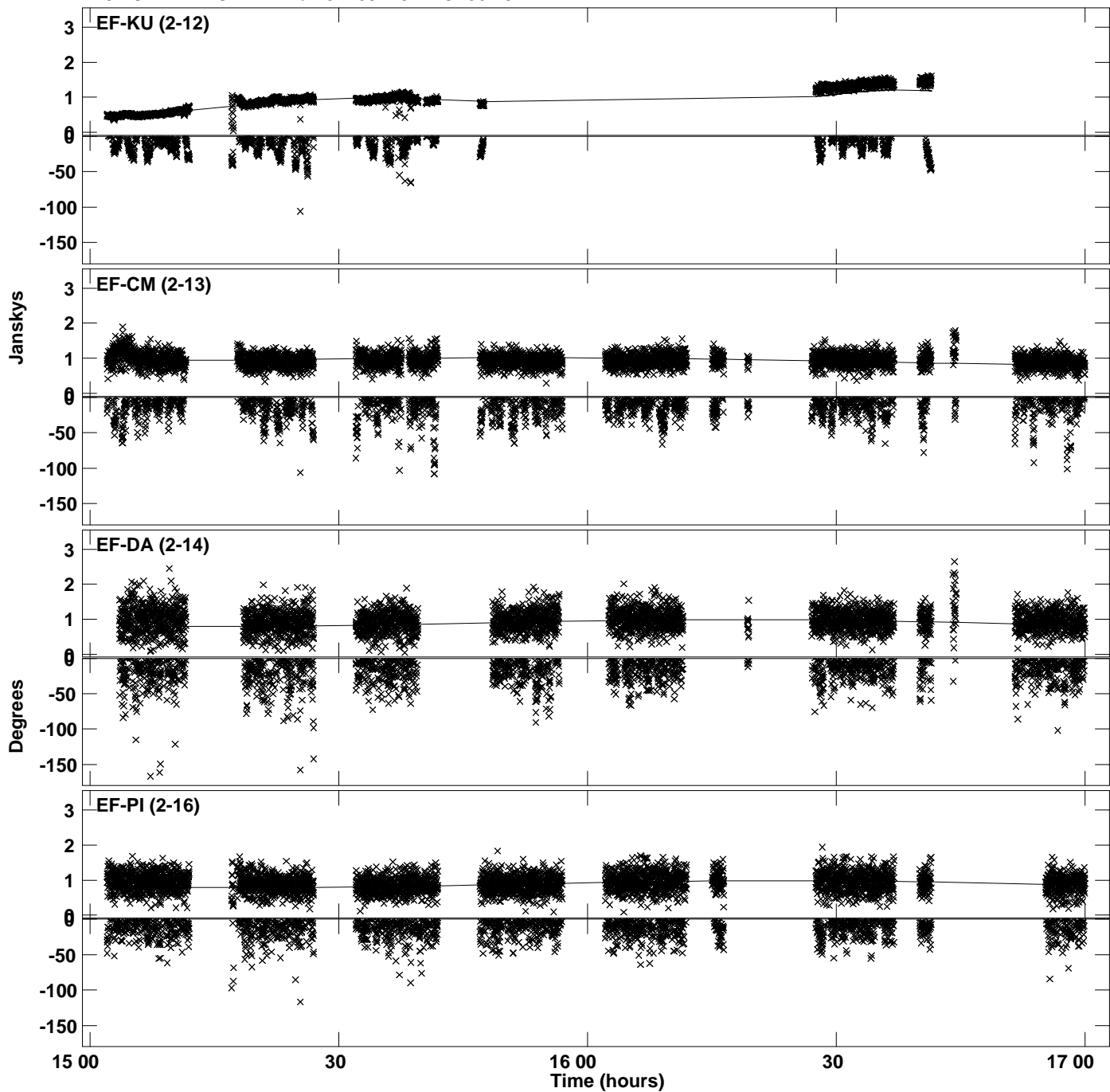
Plot file version 25 created 02-OCT-2023 16:26:43
Amplitude andPhase vs Time for J1159+2914.MULTI.1 CL # 3
IF 9 CHAN 1 STK RR of J1159+2914.ICL001.3



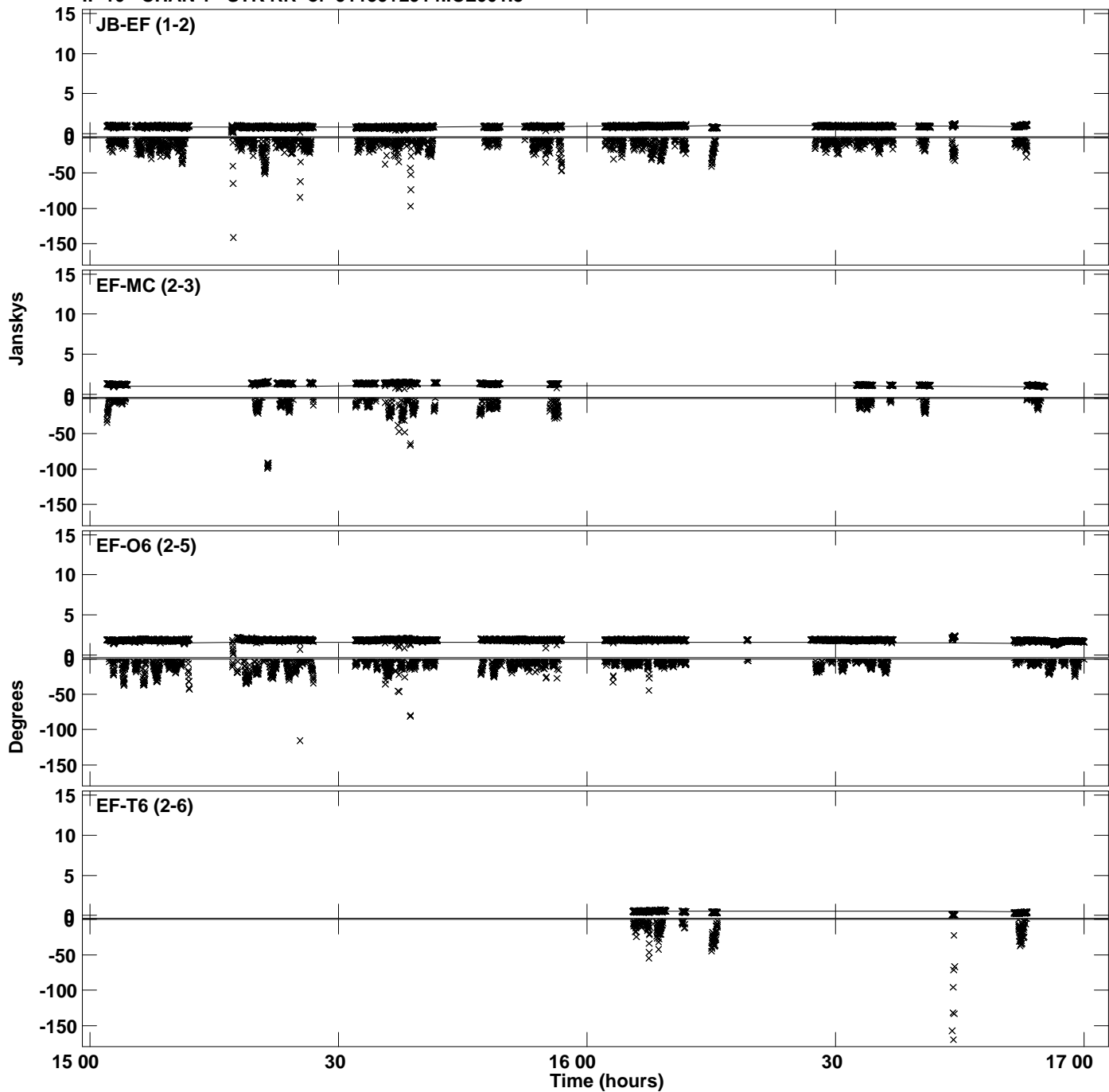
Plot file version 26 created 02-OCT-2023 16:26:43
Amplitude andPhase vs Time for J1159+2914.MULTI.1 CL # 3
IF 9 CHAN 1 STK RR of J1159+2914.ICL001.3



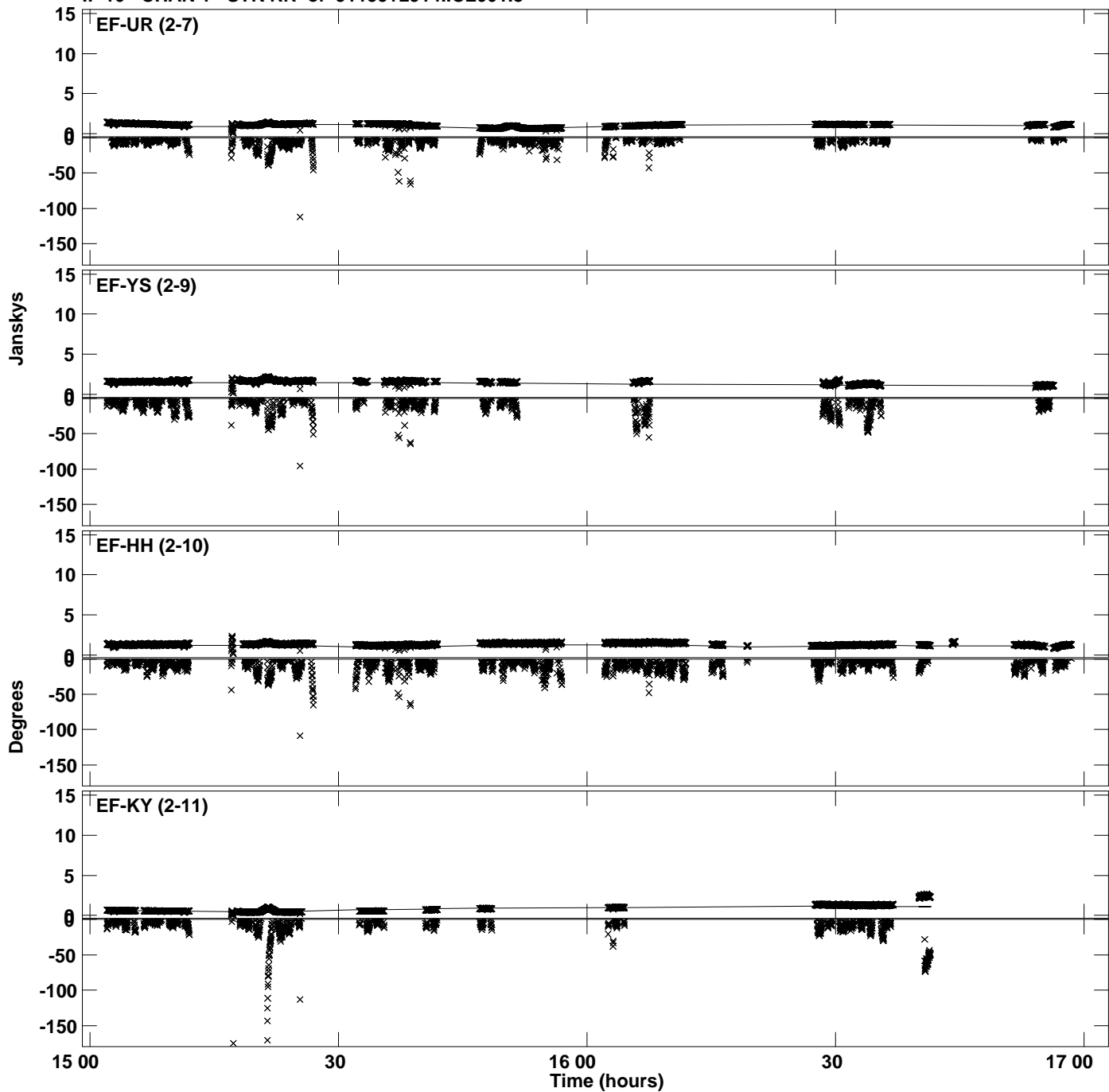
PLot file version 27 created 02-OCT-2023 16:26:43
Amplitude andPhase vs Time for J1159+2914.MULTI.1 CL # 3
IF 9 CHAN 1 STK RR of J1159+2914.ICL001.3



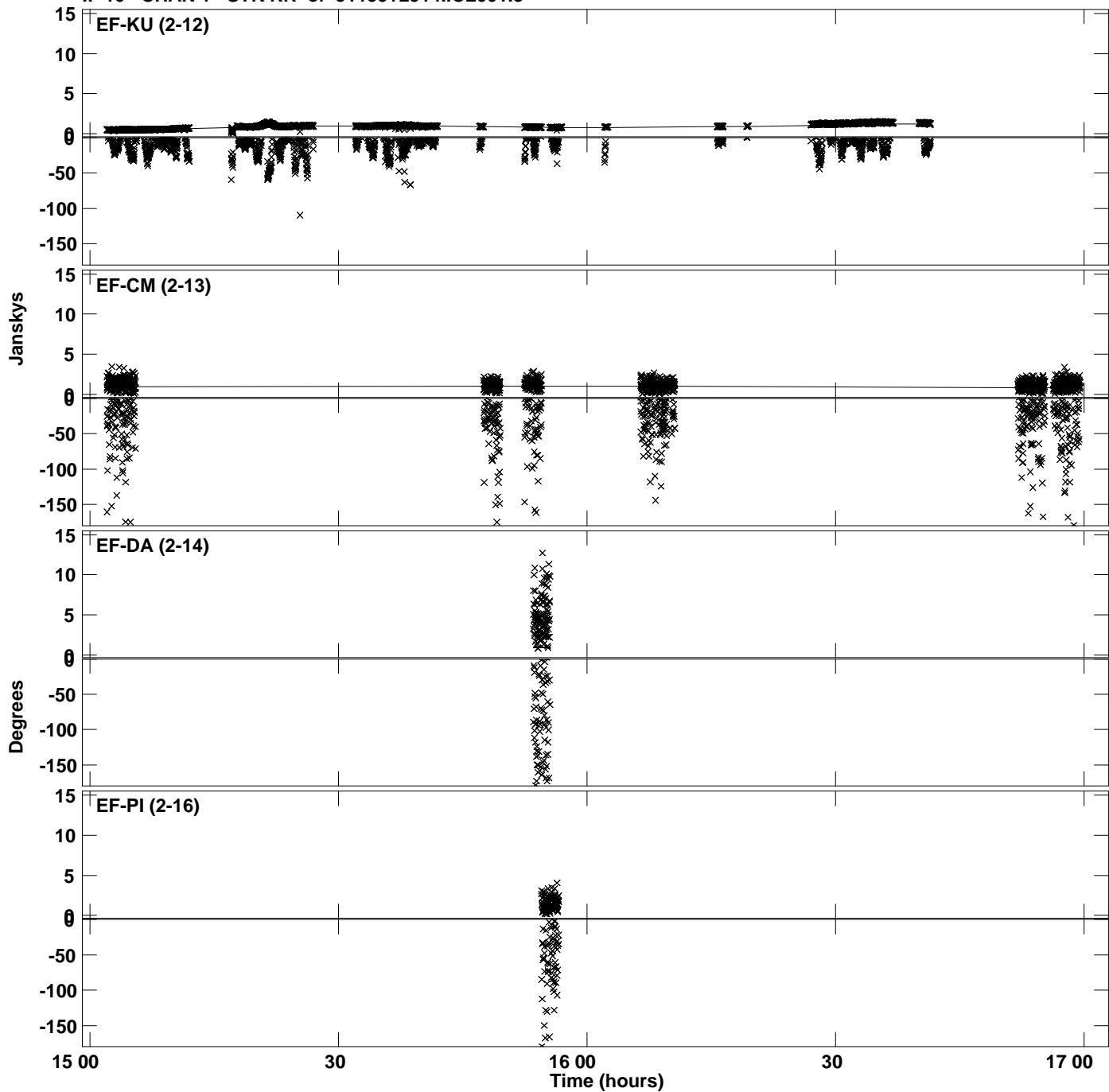
Plot file version 28 created 02-OCT-2023 16:26:46
Amplitude andPhase vs Time for J1159+2914.MULTI.1 CL # 3
IF 10 CHAN 1 STK RR of J1159+2914.ICL001.3



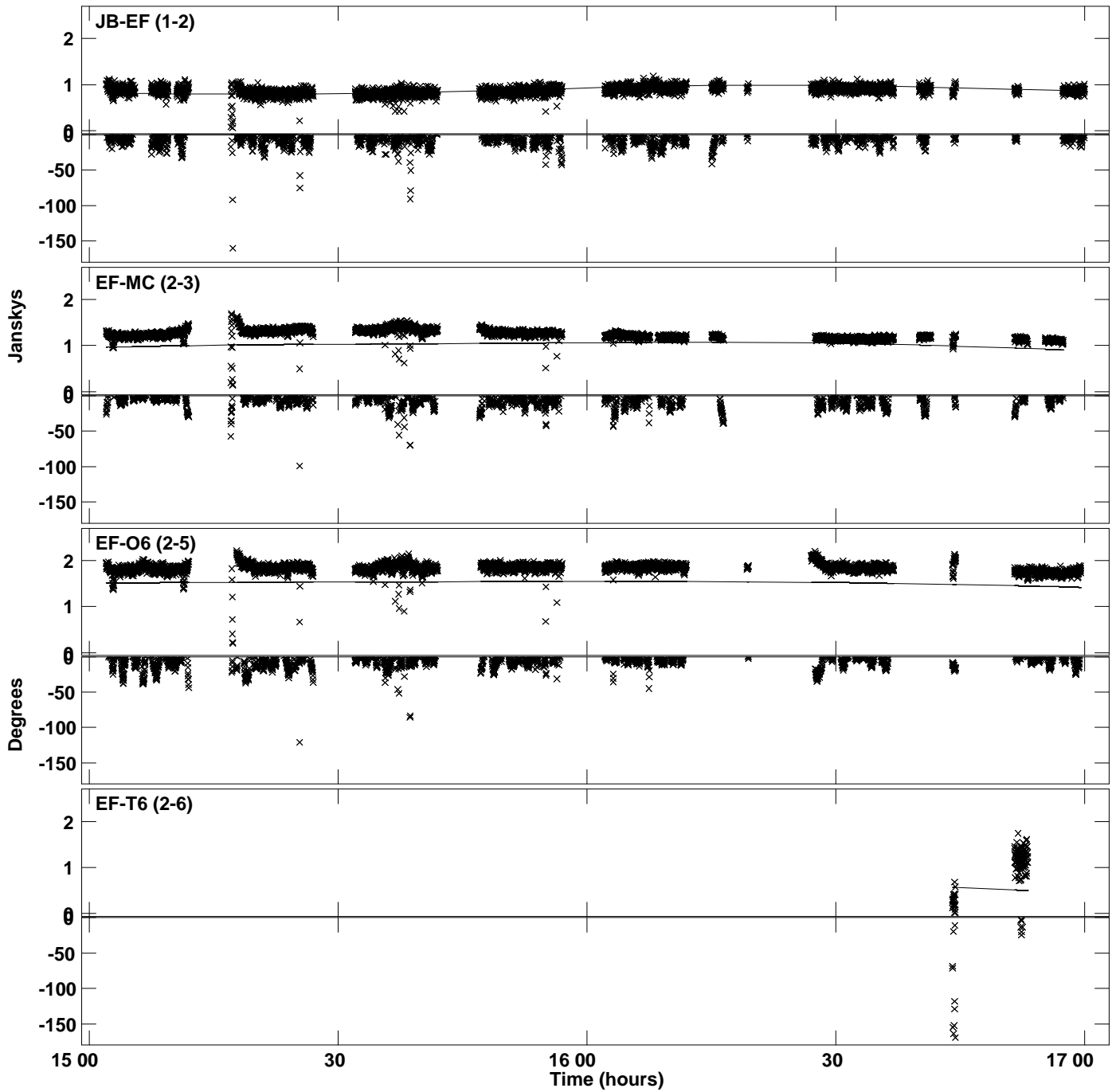
Plot file version 29 created 02-OCT-2023 16:26:46
Amplitude andPhase vs Time for J1159+2914.MULTI.1 CL # 3
IF 10 CHAN 1 STK RR of J1159+2914.ICL001.3



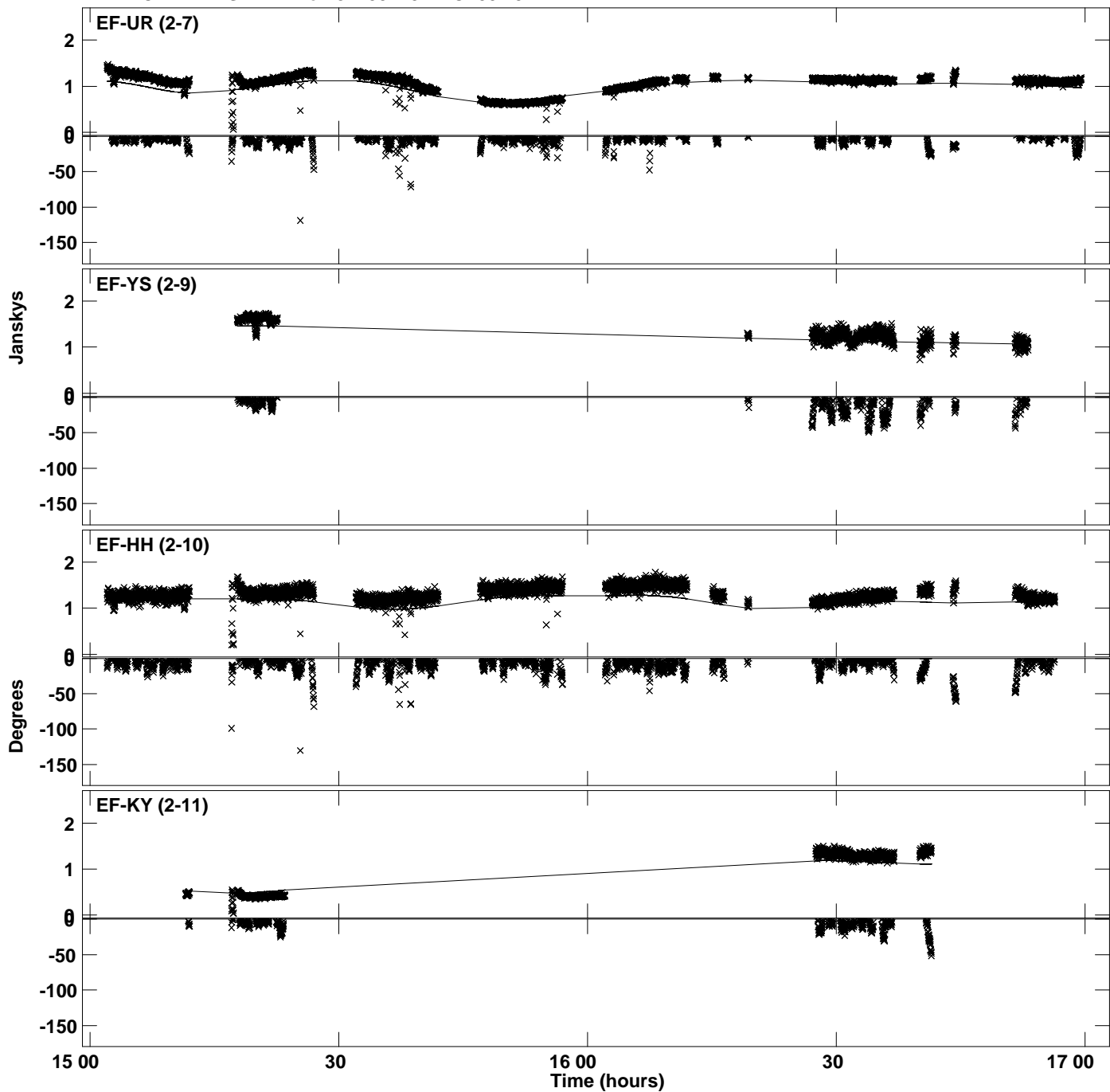
Plot file version 30 created 02-OCT-2023 16:26:46
Amplitude andPhase vs Time for J1159+2914.MULTI.1 CL # 3
IF 10 CHAN 1 STK RR of J1159+2914.ICL001.3



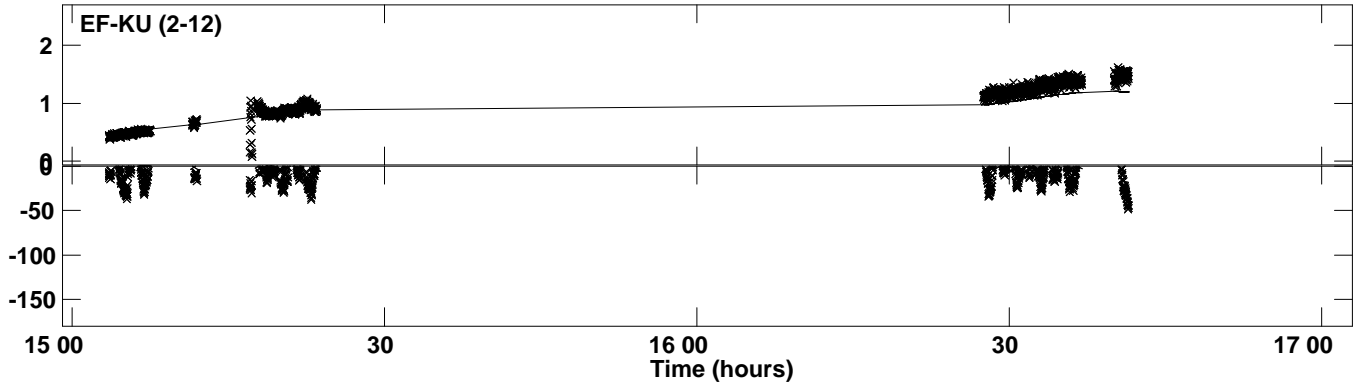
Plot file version 31 created 02-OCT-2023 16:26:50
Amplitude andPhase vs Time for J1159+2914.MULTI.1 CL # 3
IF 11 CHAN 1 STK RR of J1159+2914.ICL001.3



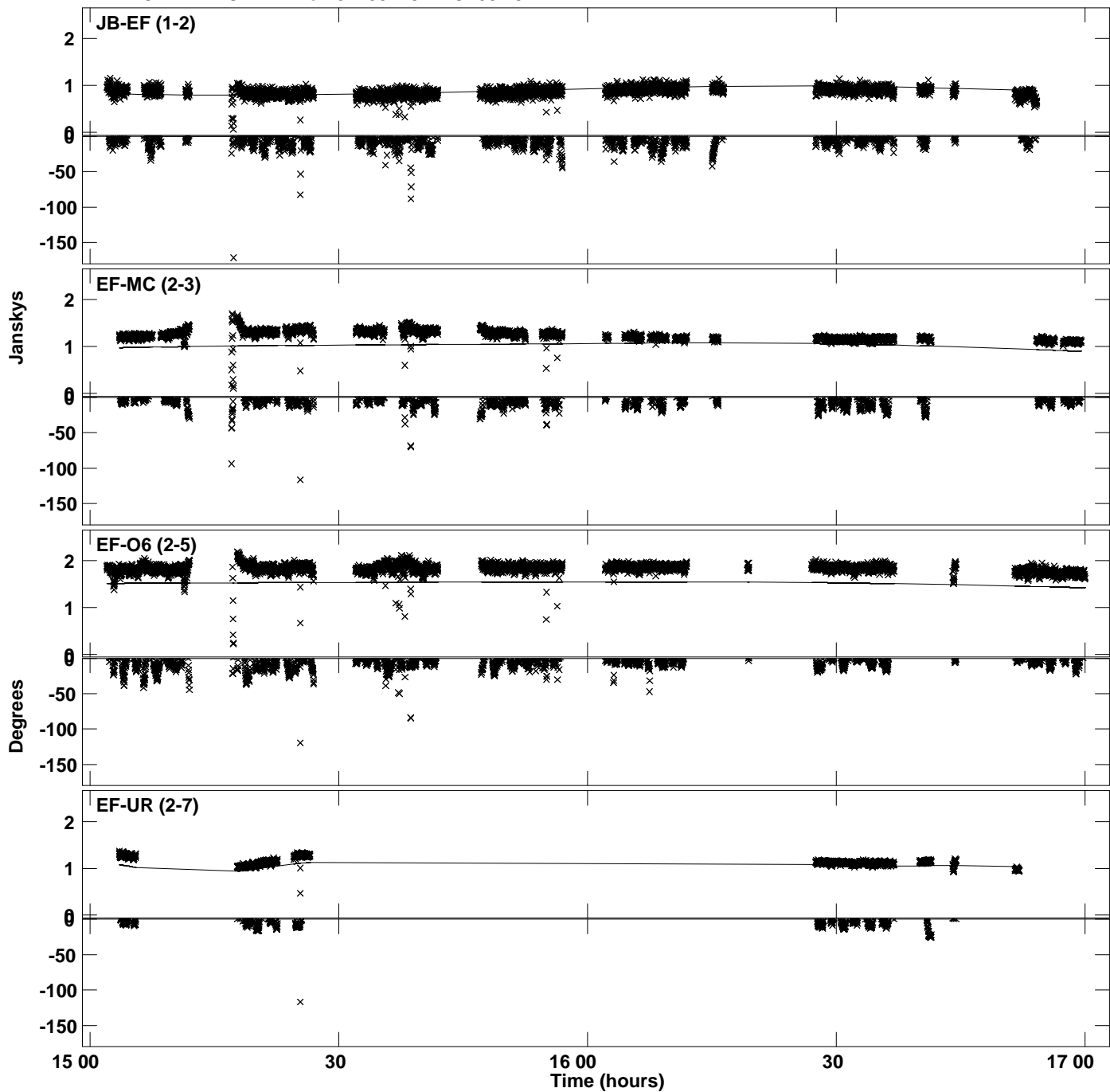
Plot file version 32 created 02-OCT-2023 16:26:50
Amplitude andPhase vs Time for J1159+2914.MULTI.1 CL # 3
IF 11 CHAN 1 STK RR of J1159+2914.ICL001.3



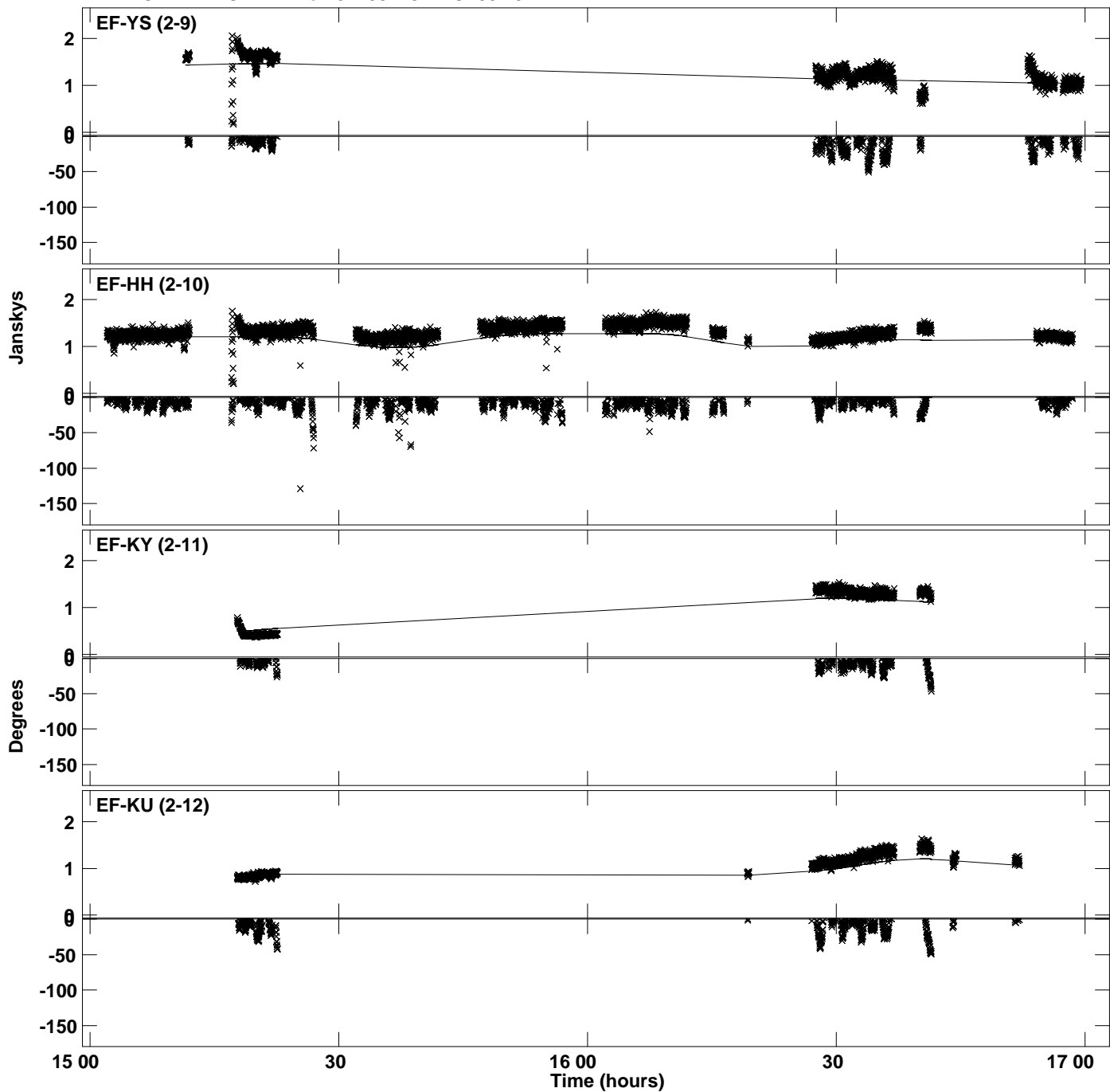
PLot file version 33 created 02-OCT-2023 16:26:50
Amplitude andPhase vs Time for J1159+2914.MULTI.1 CL # 3
IF 11 CHAN 1 STK RR of J1159+2914.ICL001.3



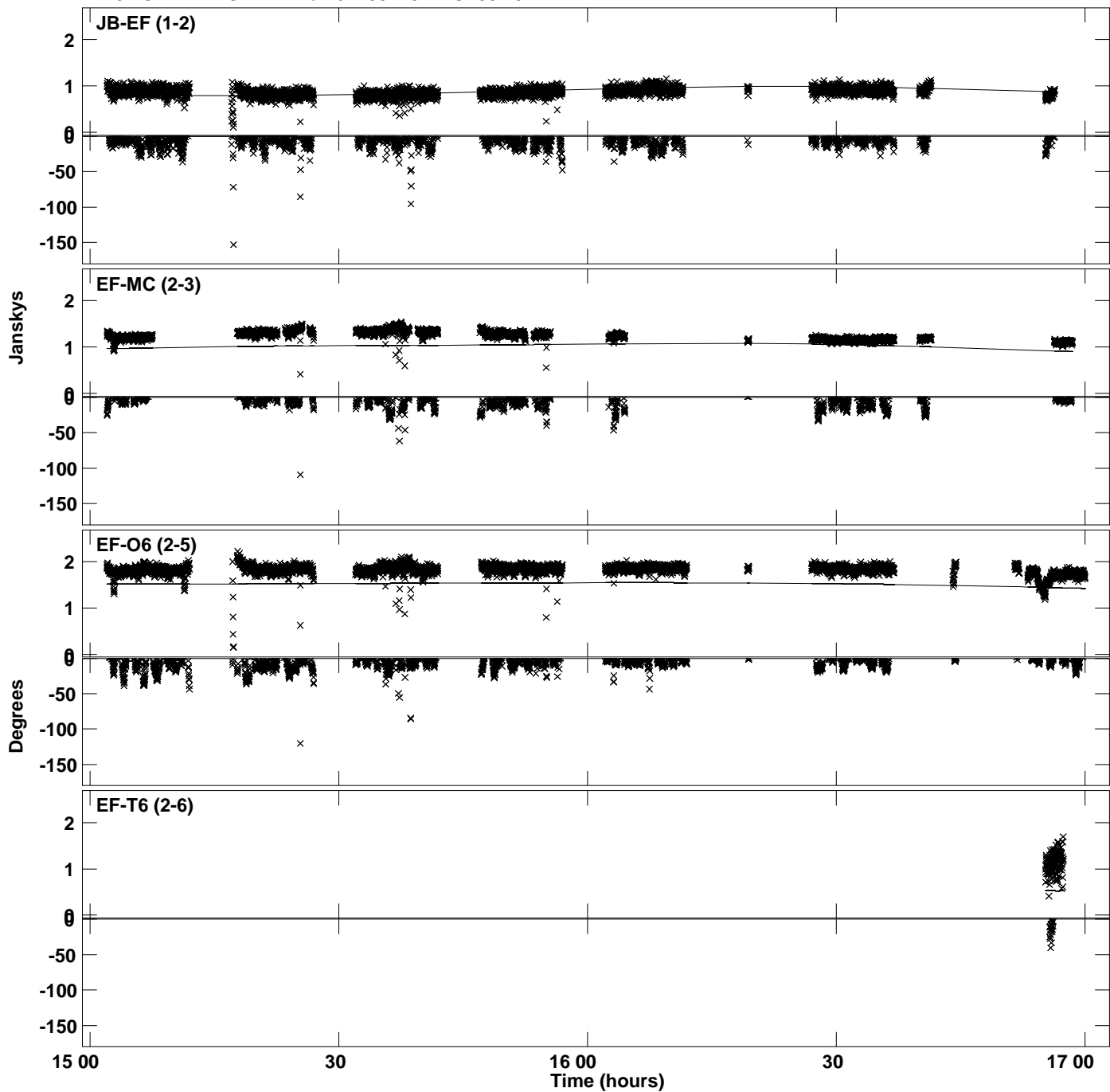
Plot file version 34 created 02-OCT-2023 16:26:54
Amplitude andPhase vs Time for J1159+2914.MULTI.1 CL # 3
IF 12 CHAN 1 STK RR of J1159+2914.ICL001.3



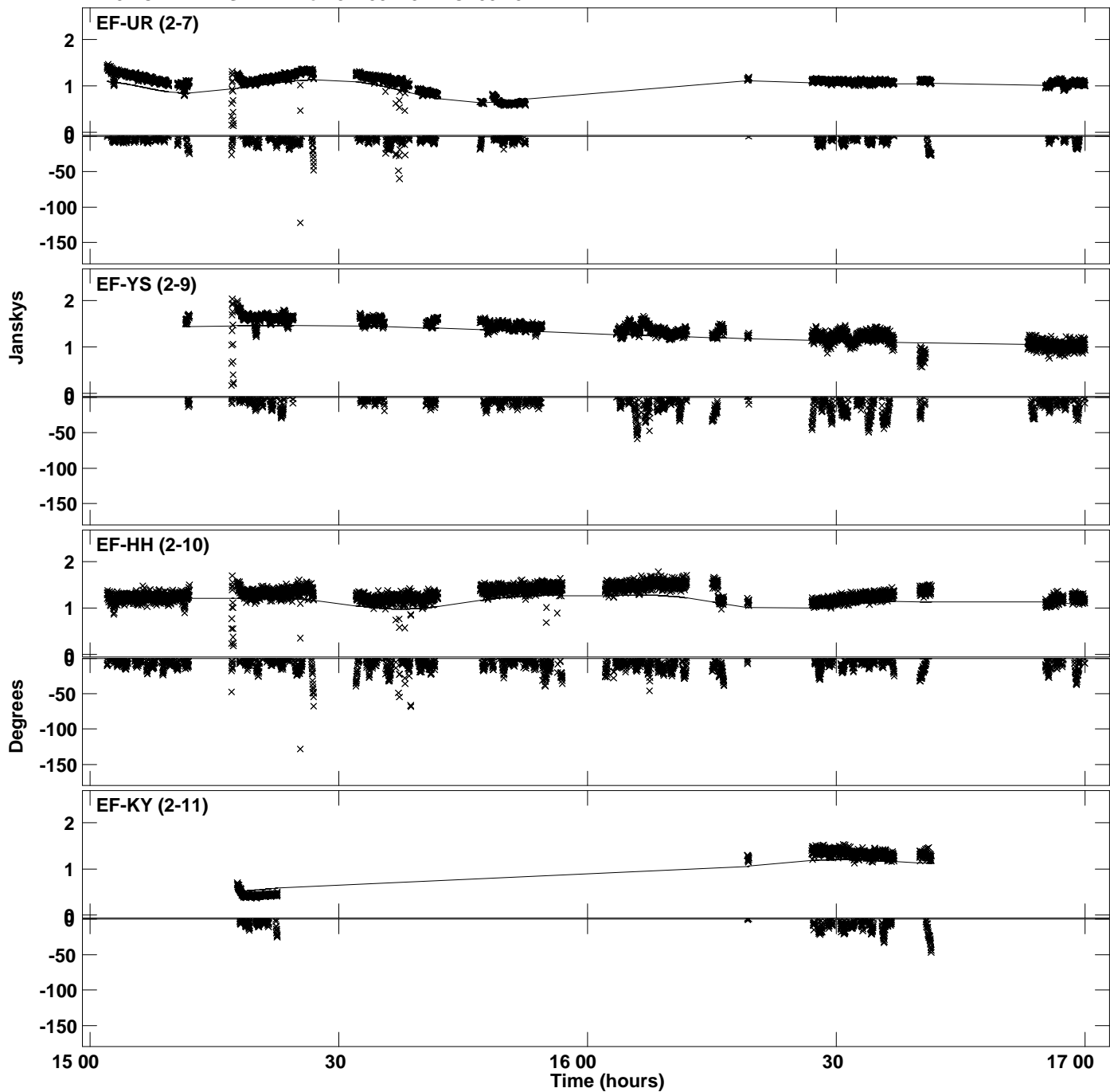
Plot file version 35 created 02-OCT-2023 16:26:54
Amplitude and Phase vs Time for J1159+2914.MULTI.1 CL # 3
IF 12 CHAN 1 STK RR of J1159+2914.ICL001.3



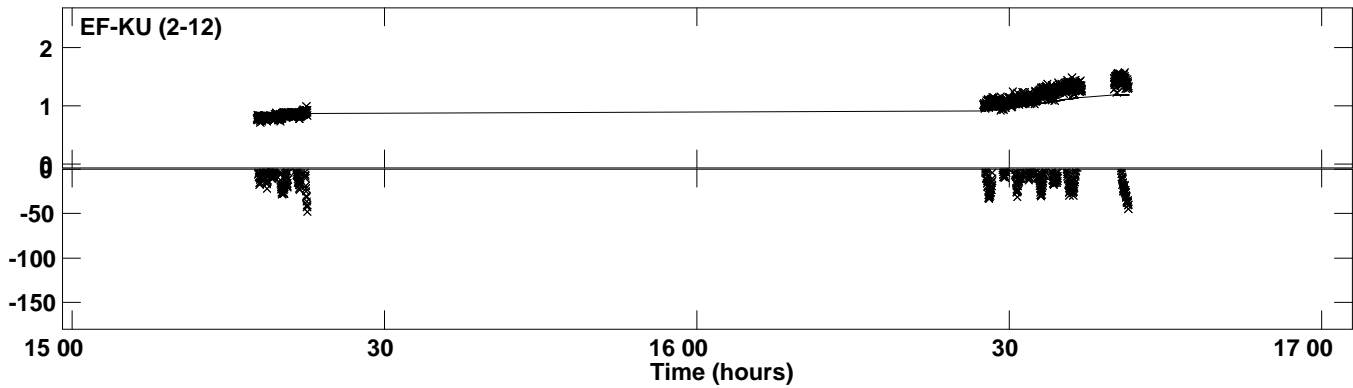
Plot file version 36 created 02-OCT-2023 16:26:58
Amplitude andPhase vs Time for J1159+2914.MULTI.1 CL # 3
IF 13 CHAN 1 STK RR of J1159+2914.ICL001.3



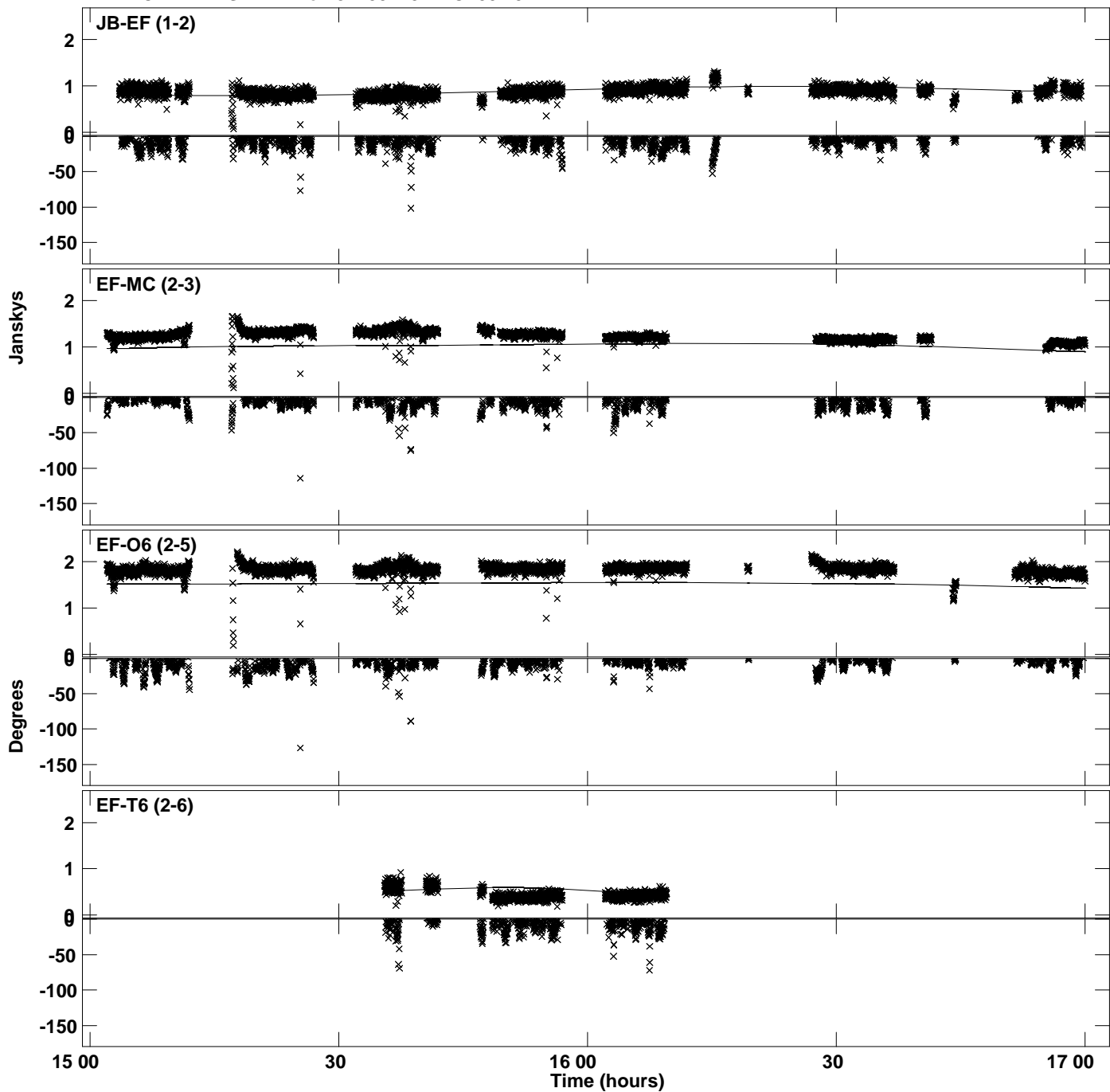
Plot file version 37 created 02-OCT-2023 16:26:58
Amplitude andPhase vs Time for J1159+2914.MULTI.1 CL # 3
IF 13 CHAN 1 STK RR of J1159+2914.ICL001.3



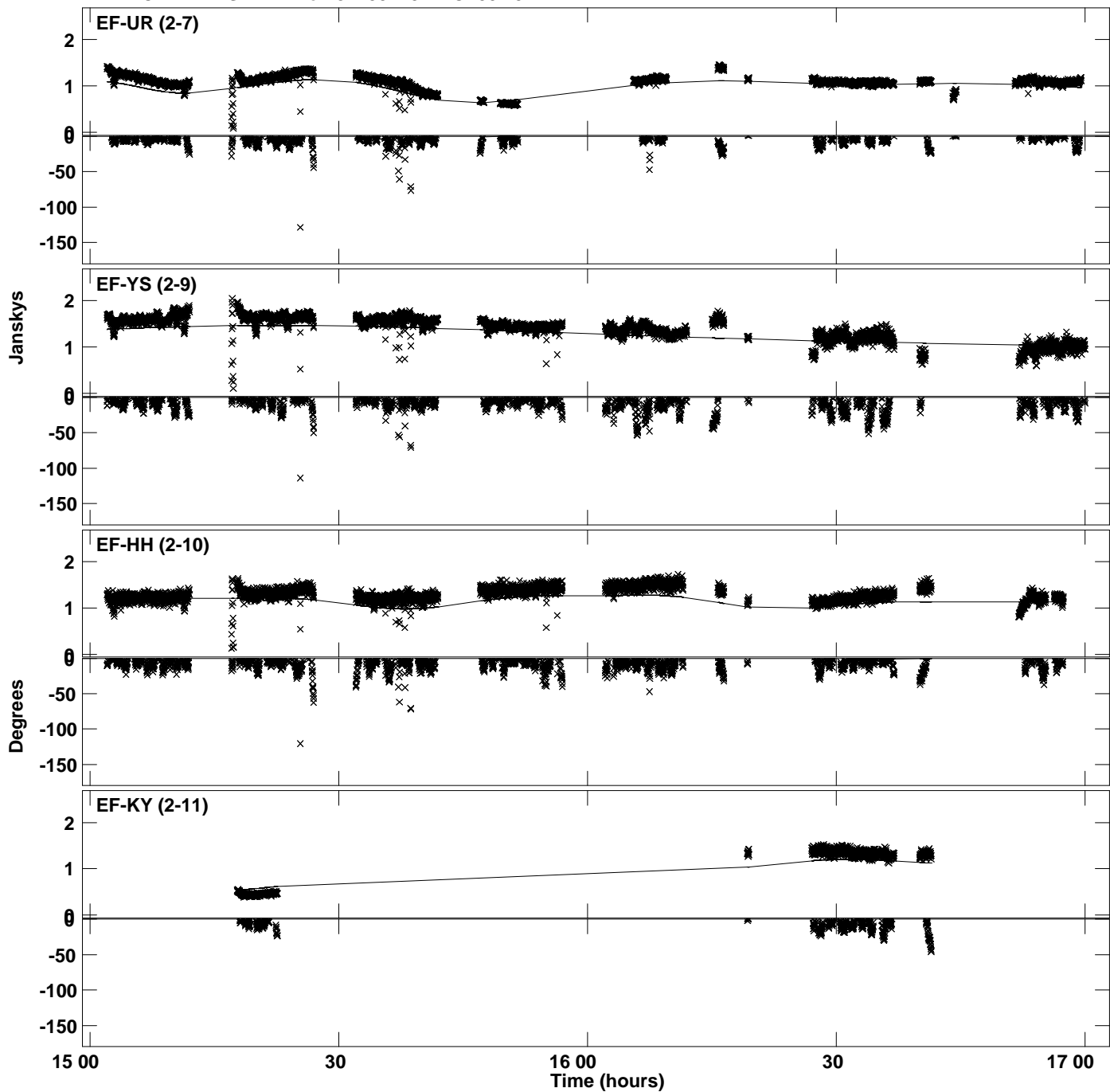
PLot file version 38 created 02-OCT-2023 16:26:58
Amplitude andPhase vs Time for J1159+2914.MULTI.1 CL # 3
IF 13 CHAN 1 STK RR of J1159+2914.ICL001.3



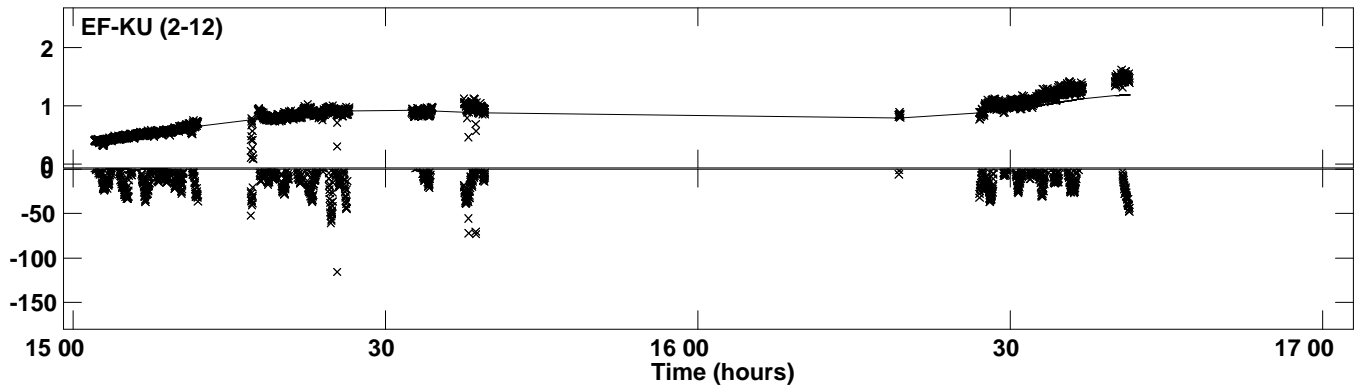
Plot file version 39 created 02-OCT-2023 16:27:01
Amplitude and Phase vs Time for J1159+2914.MULTI.1 CL # 3
IF 14 CHAN 1 STK RR of J1159+2914.ICL001.3



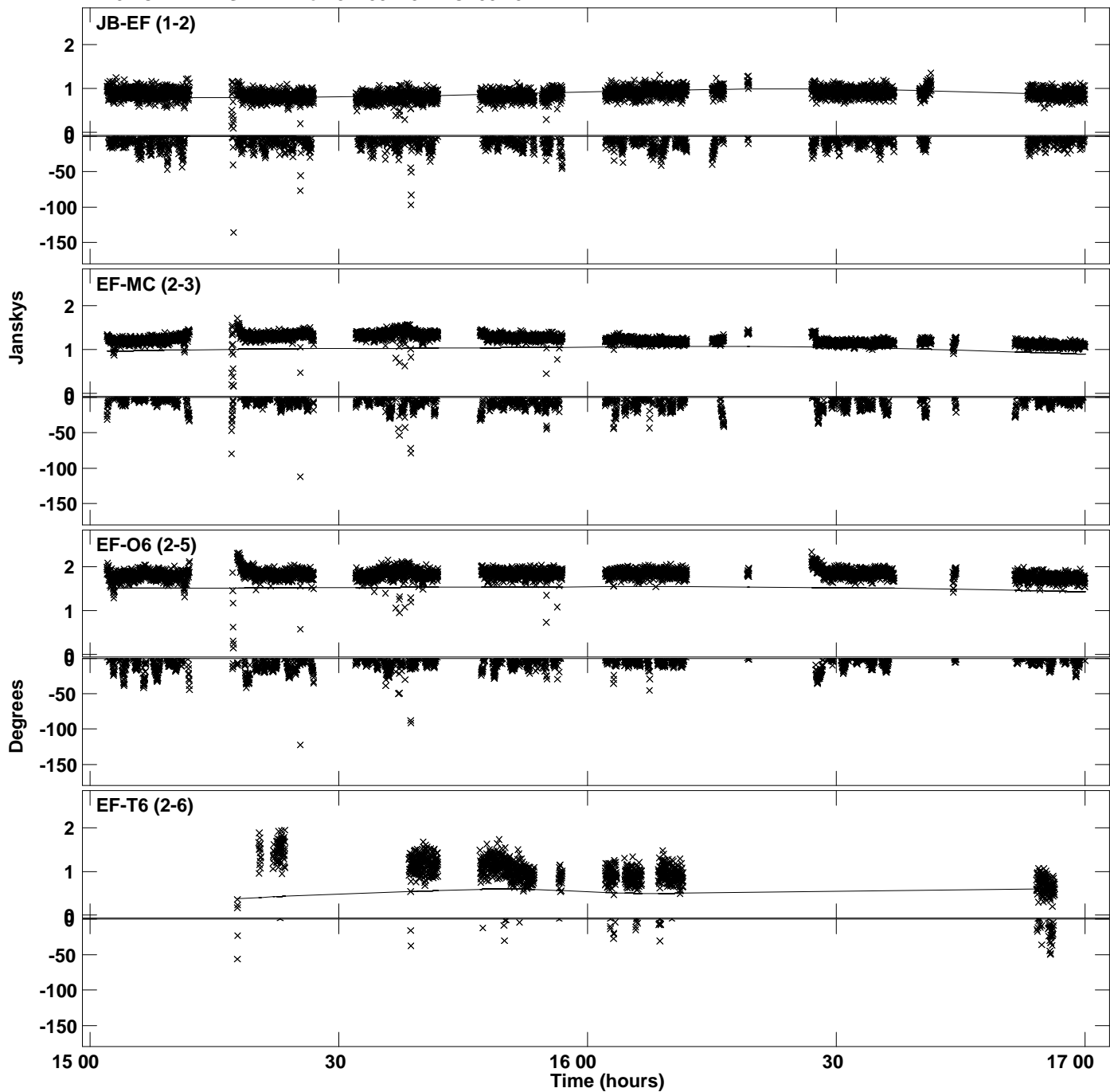
Plot file version 40 created 02-OCT-2023 16:27:01
Amplitude andPhase vs Time for J1159+2914.MULTI.1 CL # 3
IF 14 CHAN 1 STK RR of J1159+2914.ICL001.3



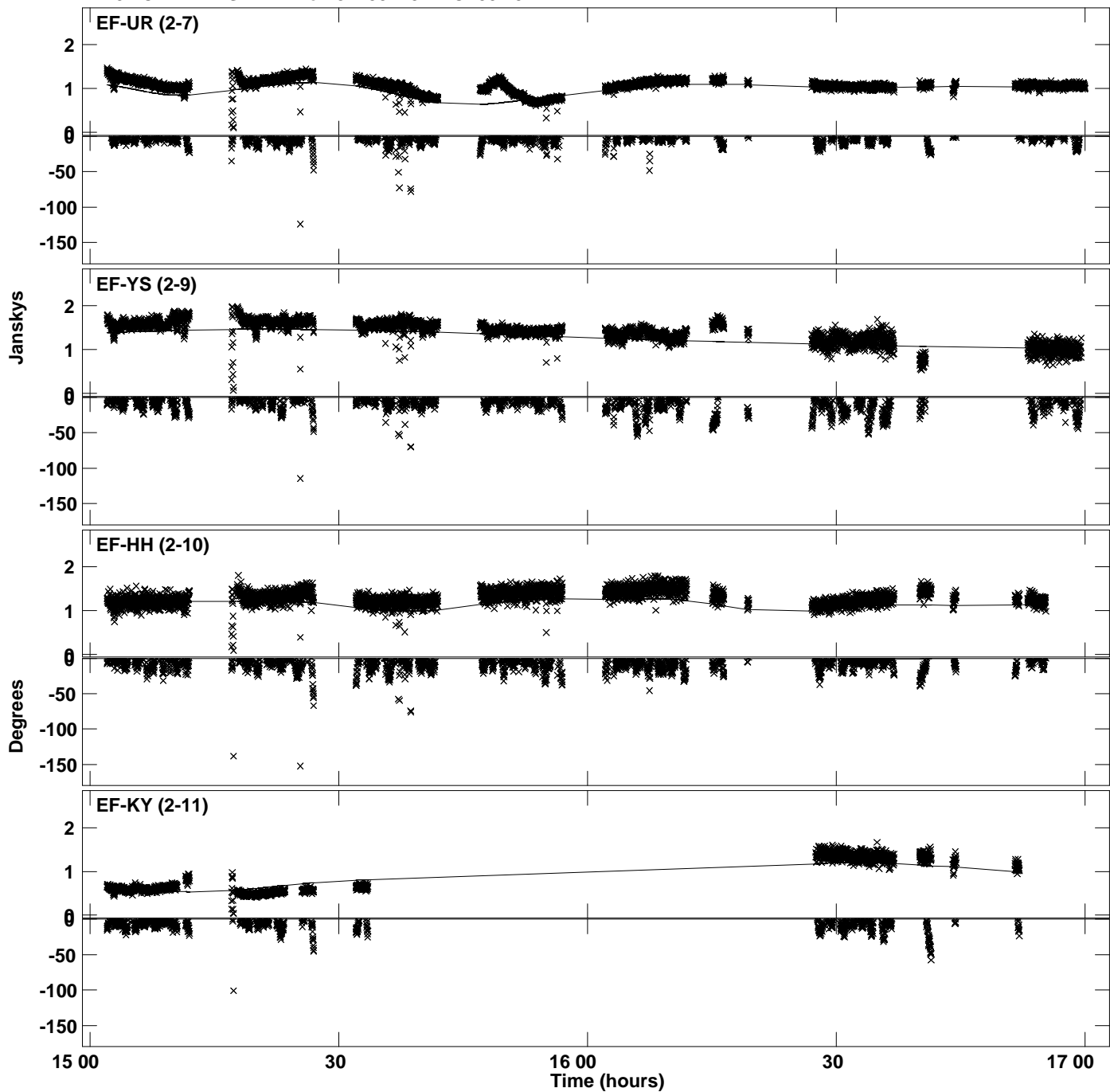
Plot file version 41 created 02-OCT-2023 16:27:01
Amplitude andPhase vs Time for J1159+2914.MULTI.1 CL # 3
IF 14 CHAN 1 STK RR of J1159+2914.ICL001.3



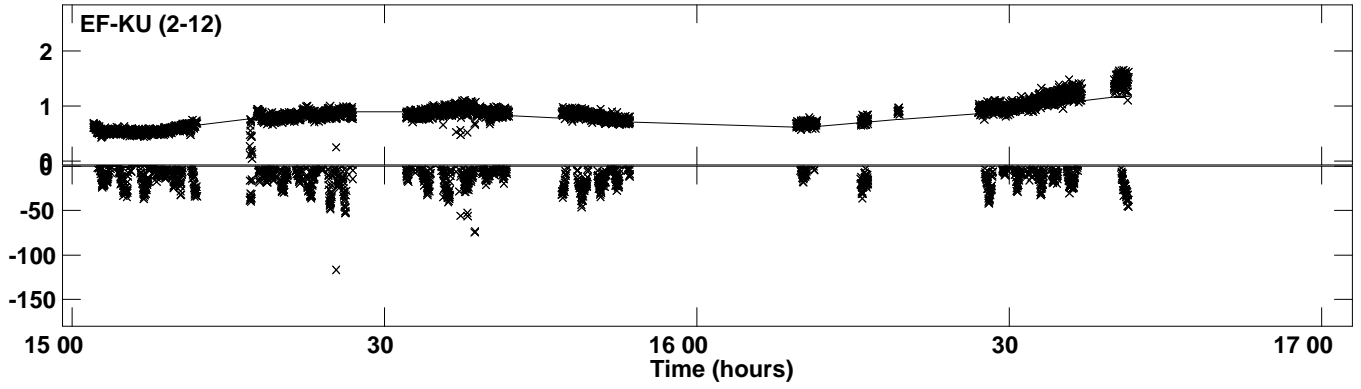
Plot file version 42 created 02-OCT-2023 16:27:05
Amplitude andPhase vs Time for J1159+2914.MULTI.1 CL # 3
IF 15 CHAN 1 STK RR of J1159+2914.ICL001.3



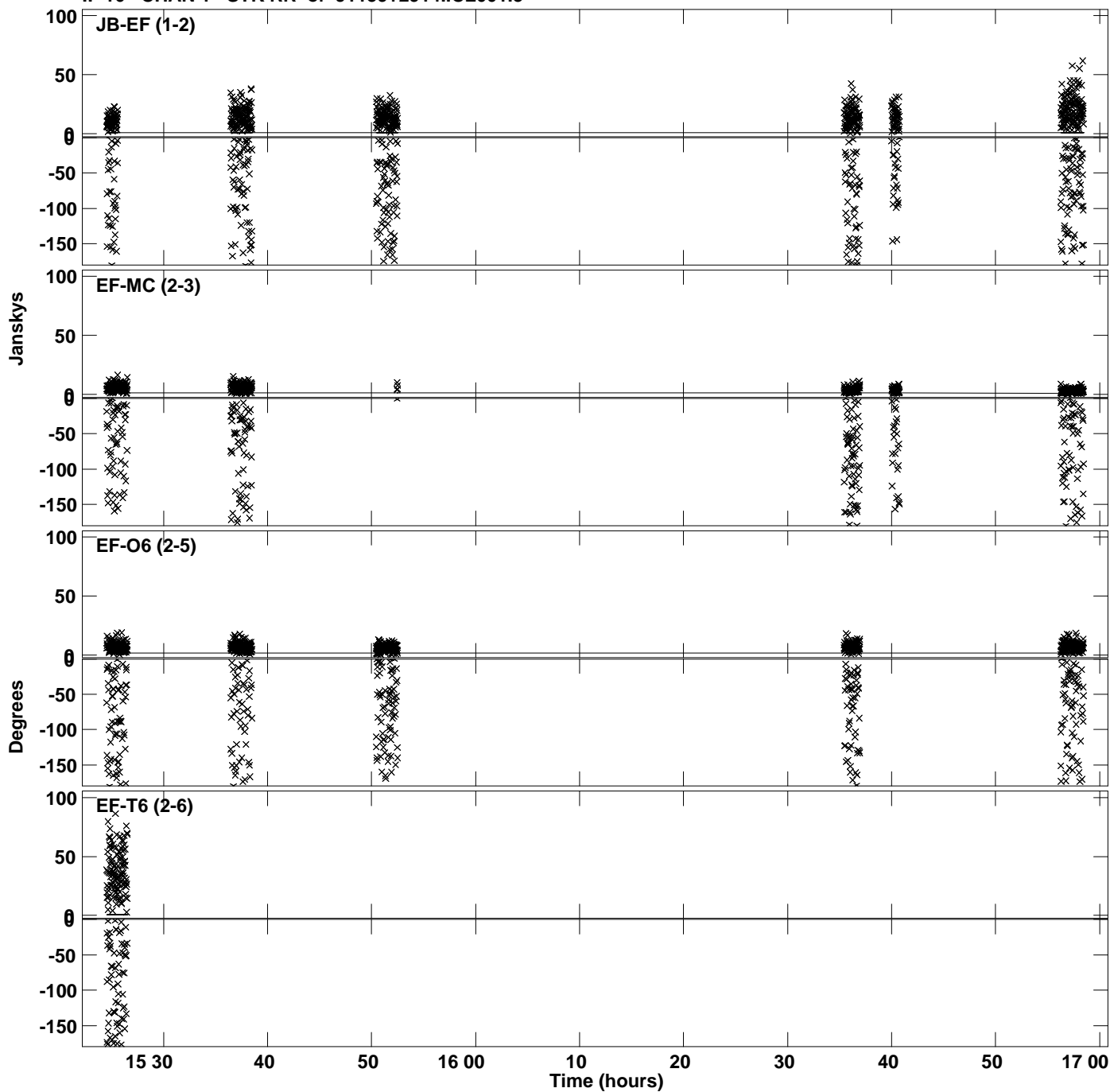
Plot file version 43 created 02-OCT-2023 16:27:05
Amplitude andPhase vs Time for J1159+2914.MULTI.1 CL # 3
IF 15 CHAN 1 STK RR of J1159+2914.ICL001.3



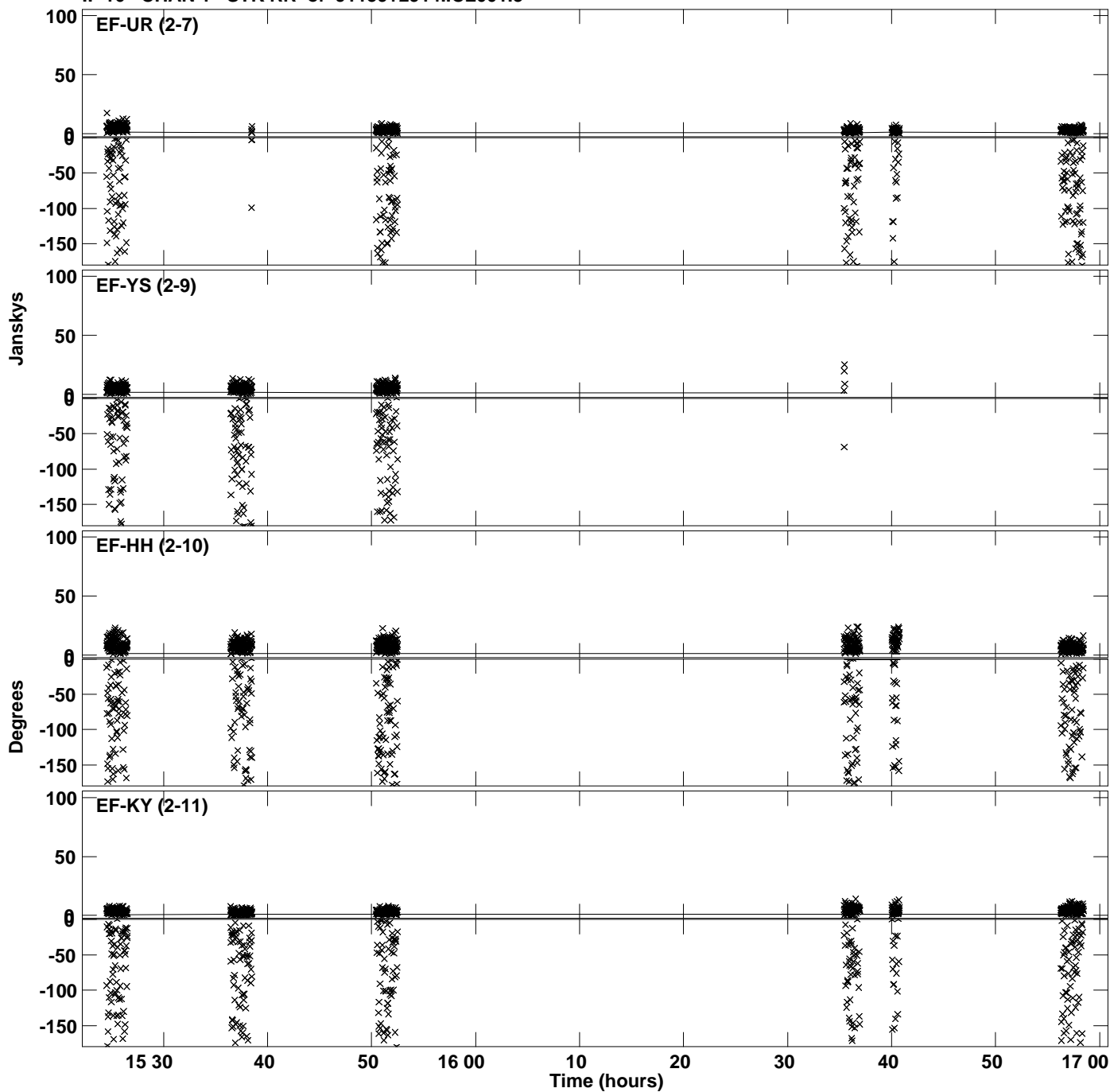
Plot file version 44 created 02-OCT-2023 16:27:05
Amplitude and Phase vs Time for J1159+2914.MULTI.1 CL # 3
IF 15 CHAN 1 STK RR of J1159+2914.ICL001.3



Plot file version 45 created 02-OCT-2023 16:27:08
Amplitude andPhase vs Time for J1159+2914.MULTI.1 CL # 3
IF 16 CHAN 1 STK RR of J1159+2914.ICL001.3



Plot file version 46 created 02-OCT-2023 16:27:08
Amplitude andPhase vs Time for J1159+2914.MULTI.1 CL # 3
IF 16 CHAN 1 STK RR of J1159+2914.ICL001.3



PLot file version 47 created 02-OCT-2023 16:27:08
Amplitude andPhase vs Time for J1159+2914.MULTI.1 CL # 3
IF 16 CHAN 1 STK RR of J1159+2914.ICL001.3

