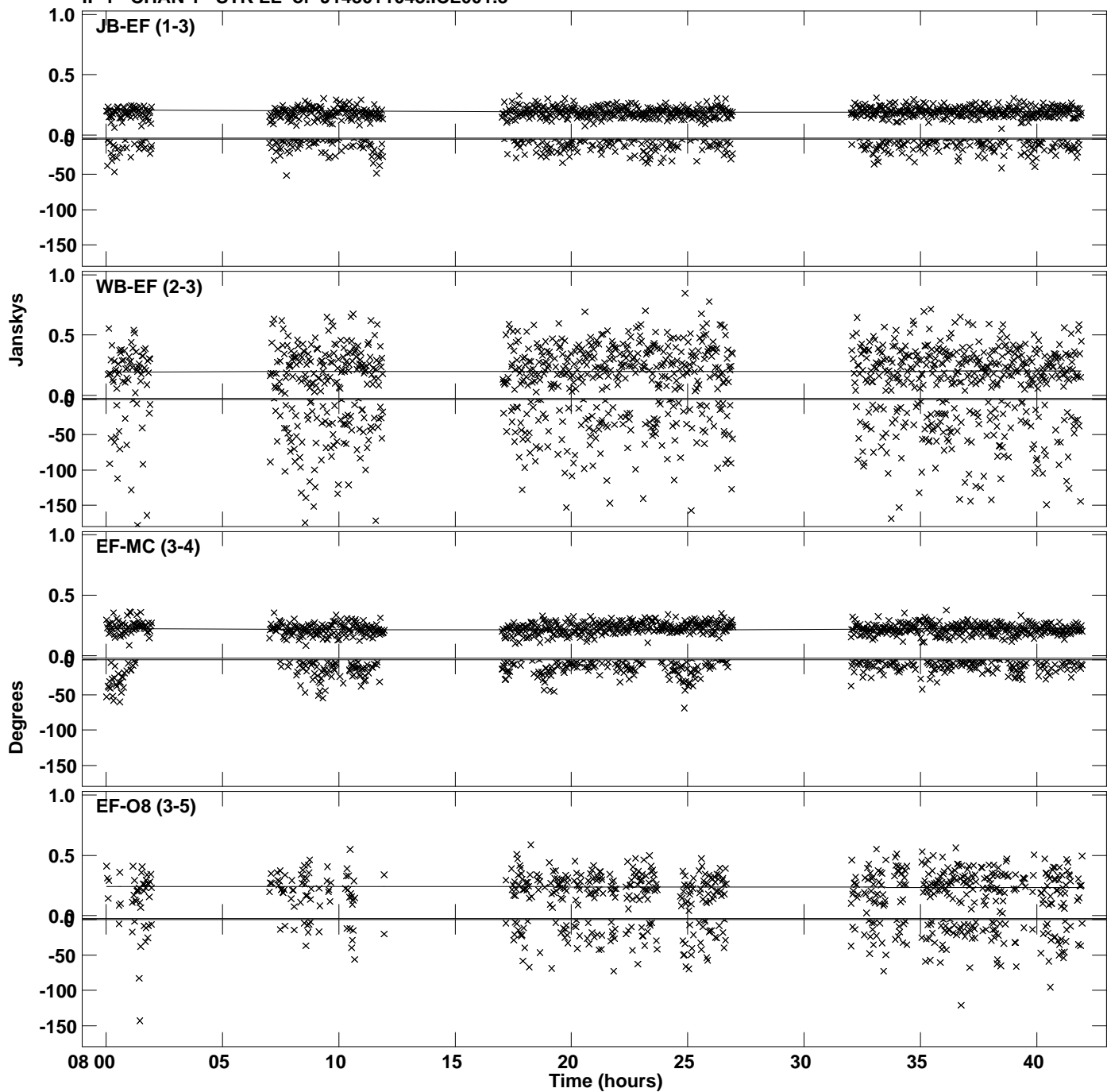
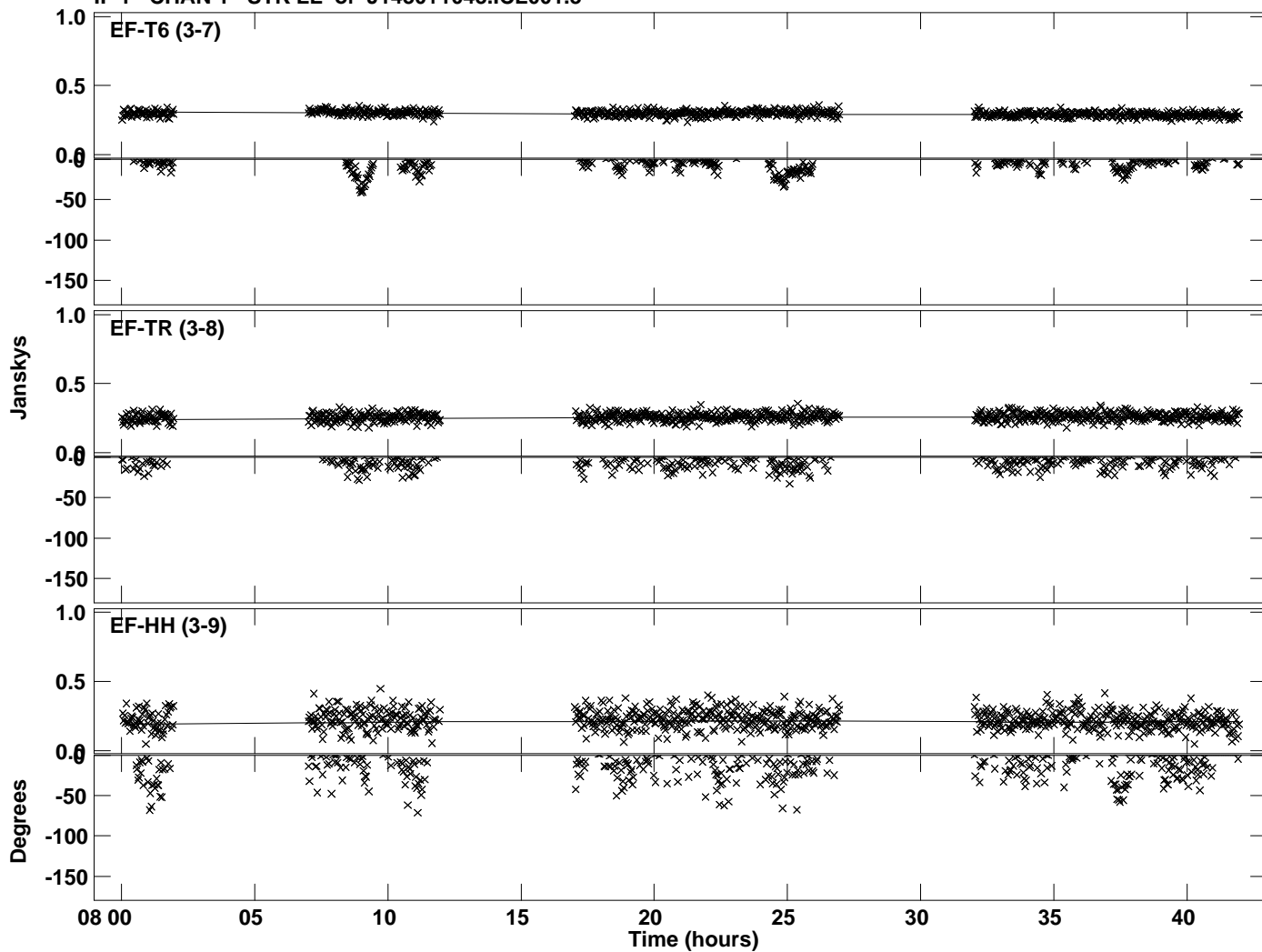


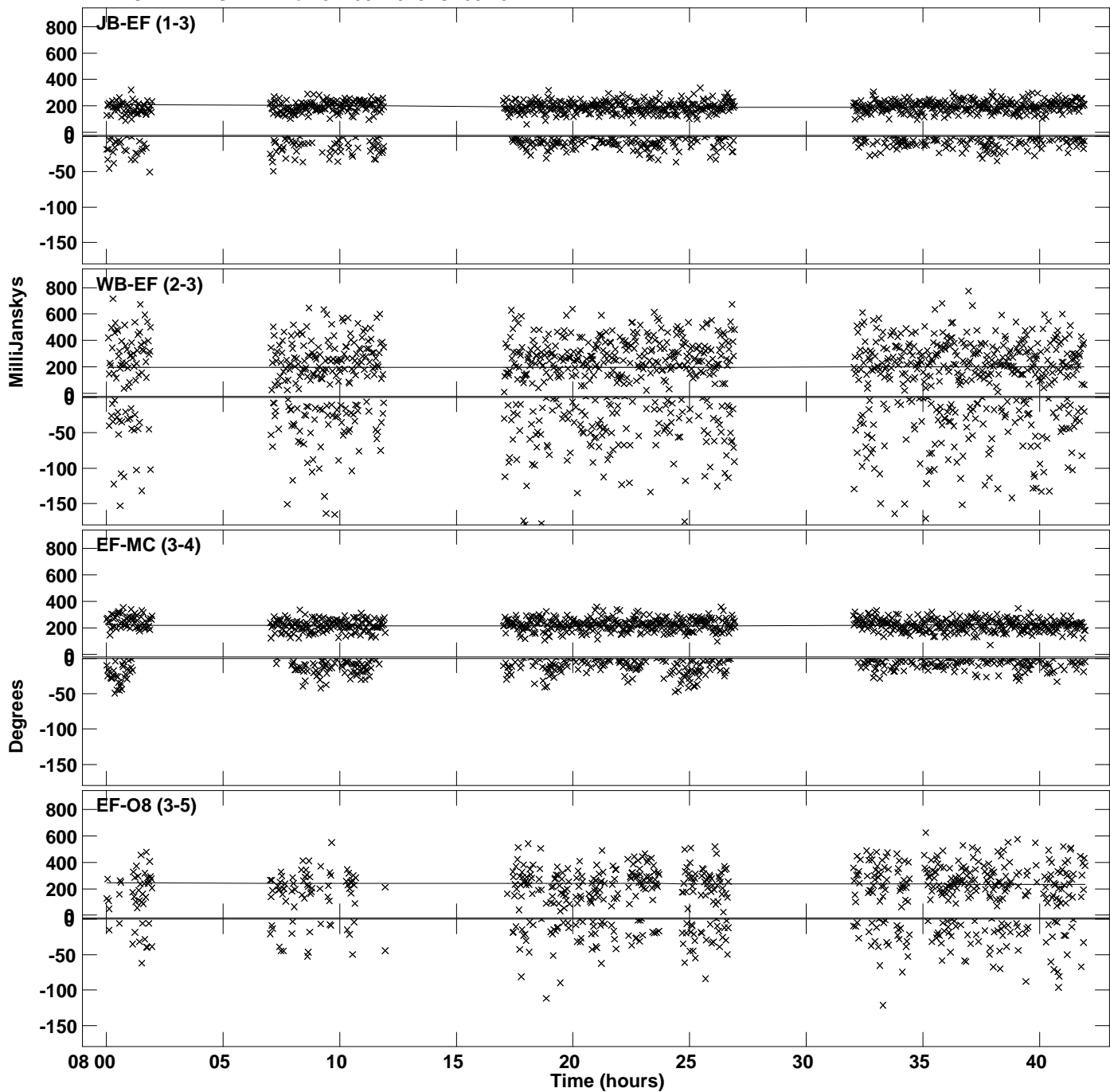
Plot file version 1 created 12-DEC-2023 16:46:18  
Amplitude and Phase vs Time for J1430+1043.MULTI.1 CL # 3  
IF 1 CHAN 1 STK LL of J1430+1043.ICL001.3



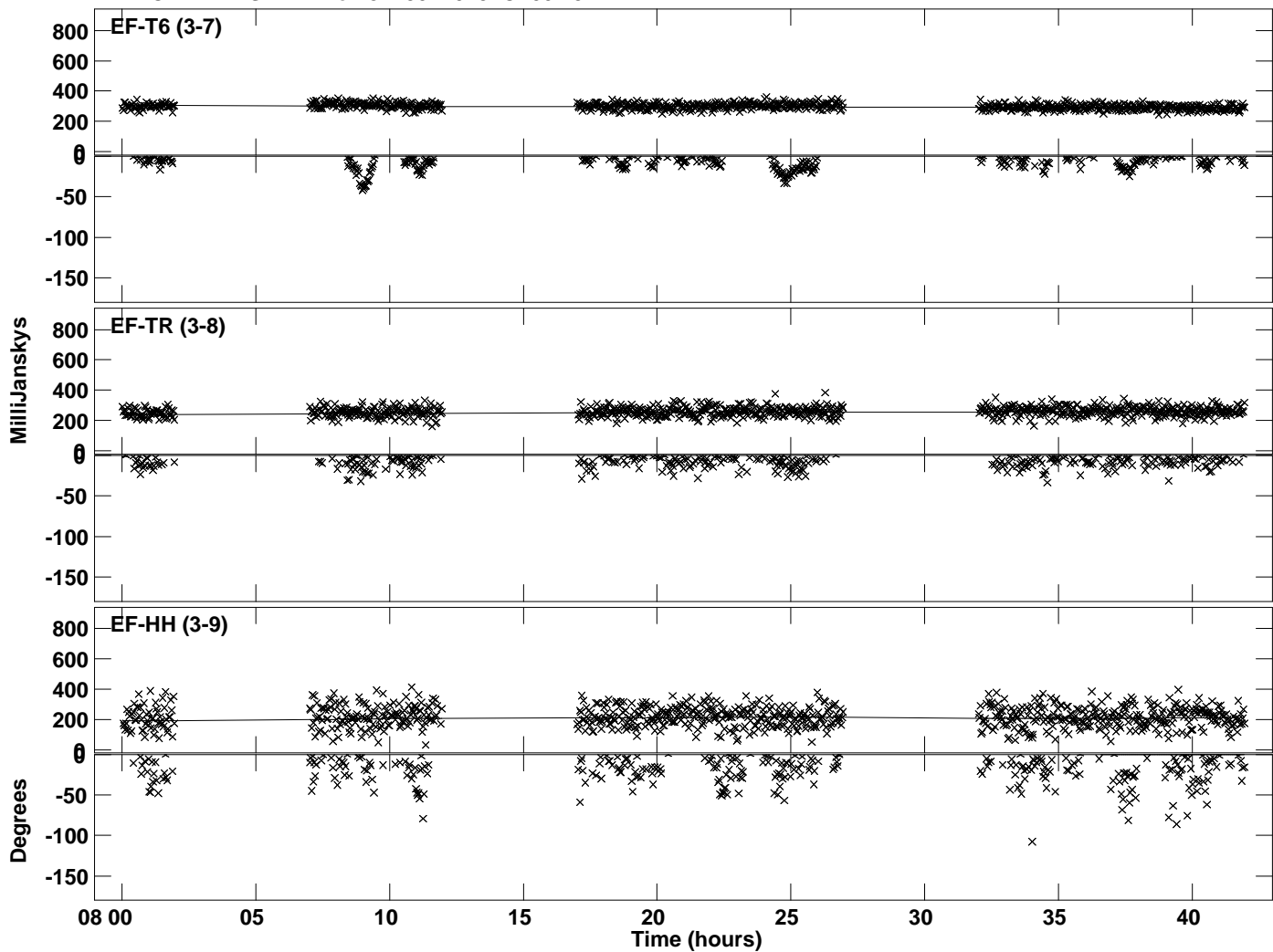
Plot file version 2 created 12-DEC-2023 16:46:18  
Amplitude and Phase vs Time for J1430+1043.MULTI.1 CL # 3  
IF 1 CHAN 1 STK LL of J1430+1043.ICL001.3



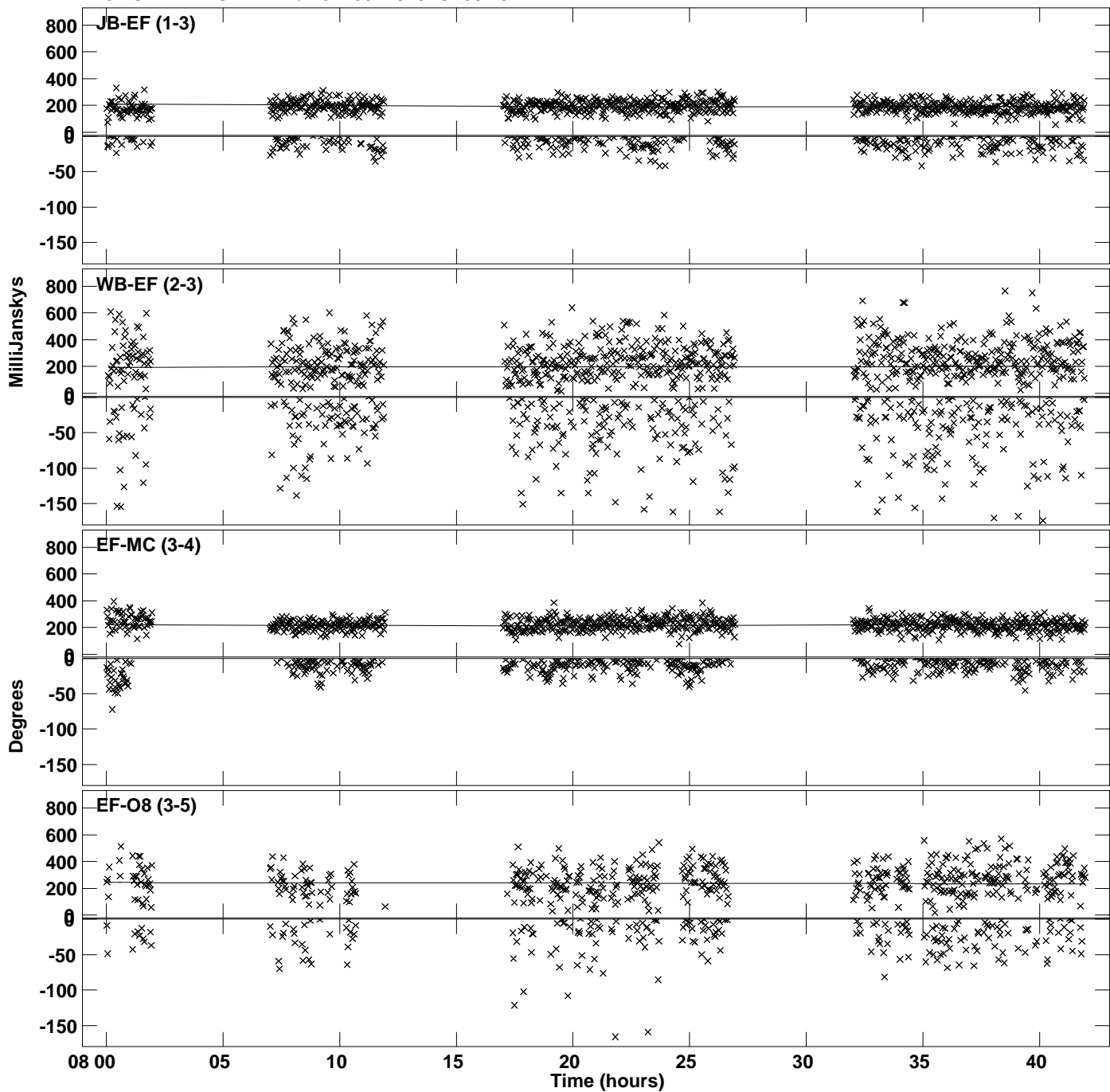
PLot file version 3 created 12-DEC-2023 16:46:18  
Amplitude andPhase vs Time for J1430+1043.MULTI.1 CL # 3  
IF 2 CHAN 1 STK LL of J1430+1043.ICL001.3



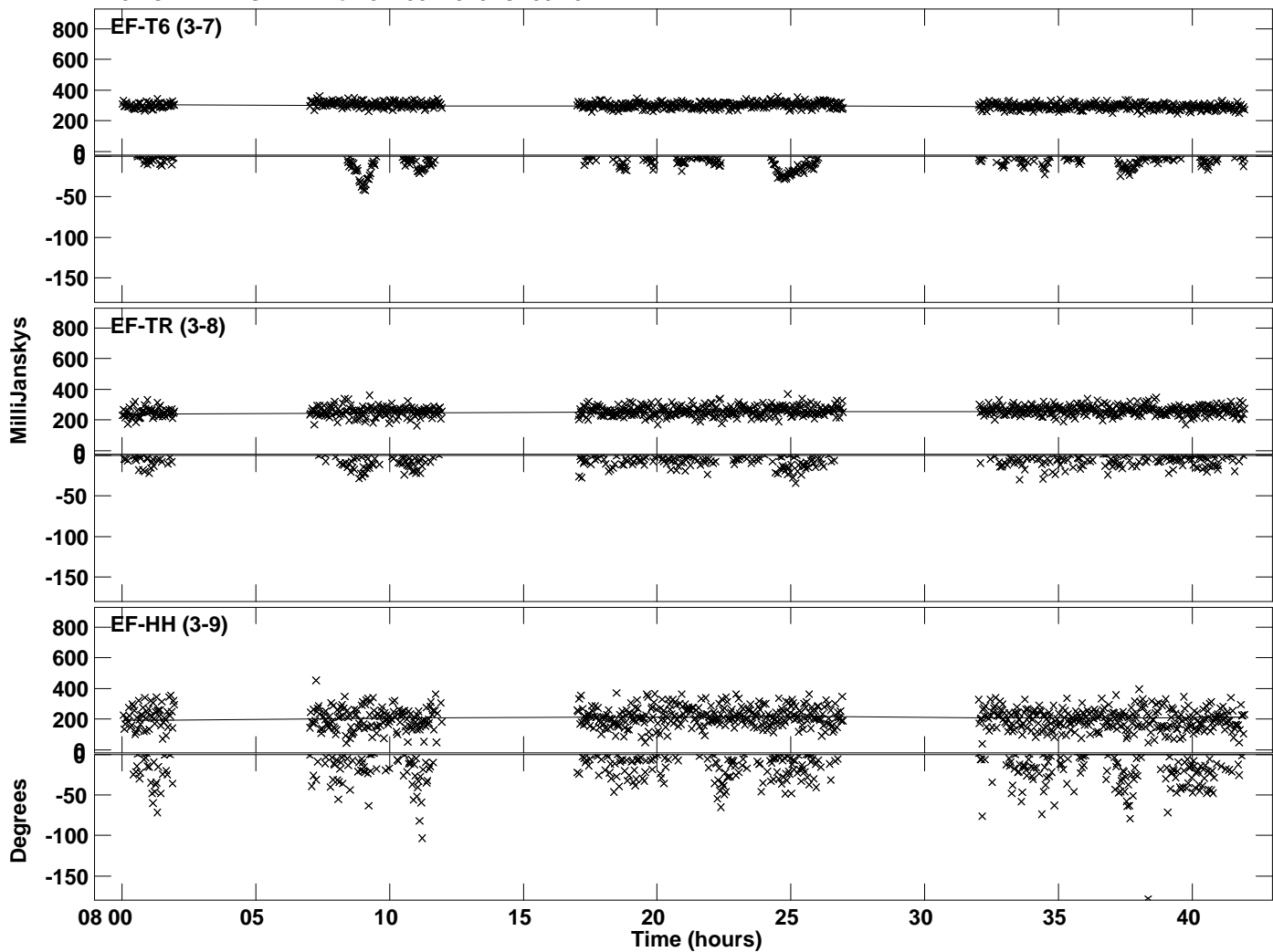
Plot file version 4 created 12-DEC-2023 16:46:18  
Amplitude andPhase vs Time for J1430+1043.MULTI.1 CL # 3  
IF 2 CHAN 1 STK LL of J1430+1043.ICL001.3



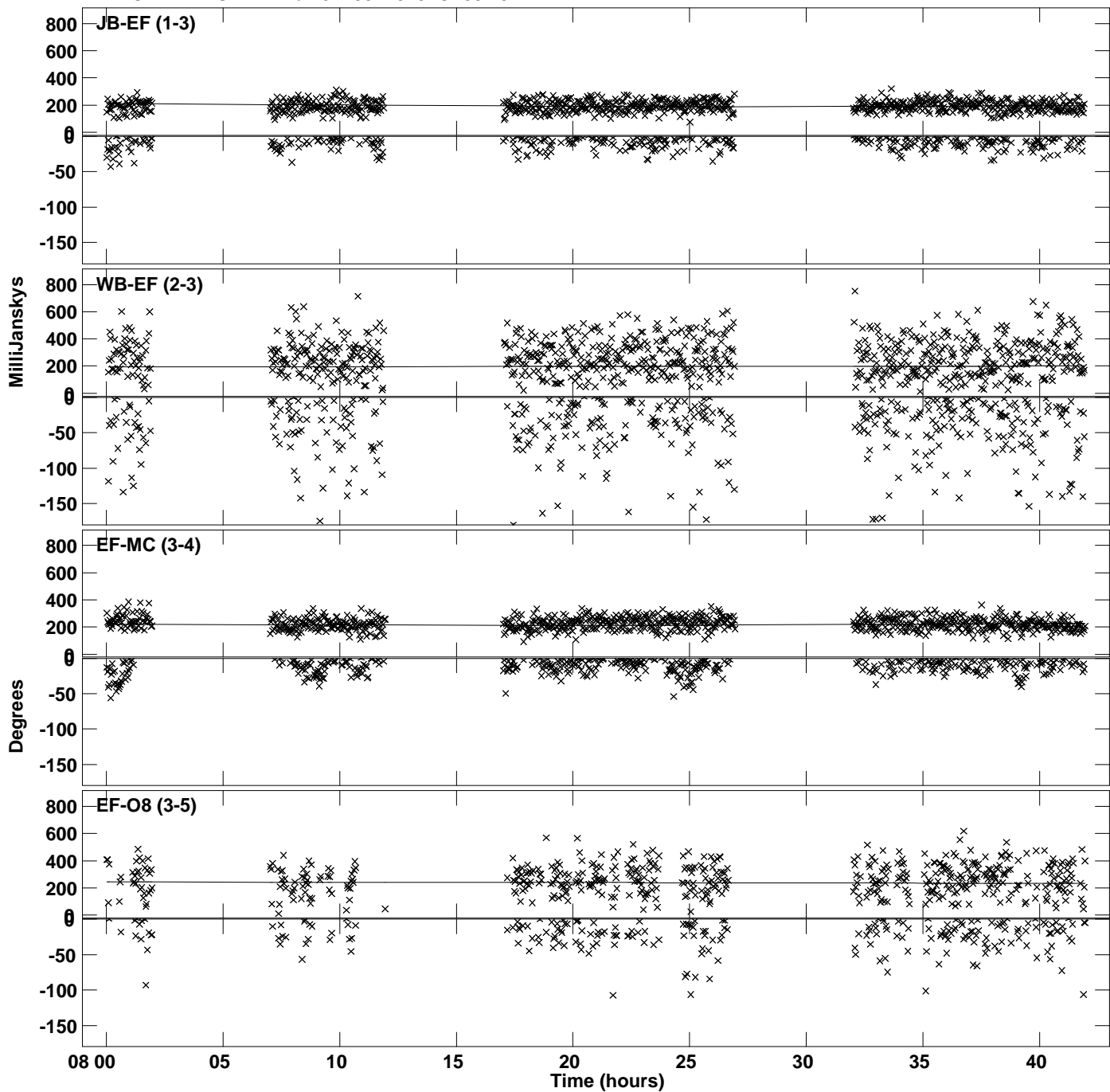
Plot file version 5 created 12-DEC-2023 16:46:18  
Amplitude and Phase vs Time for J1430+1043.MULTI.1 CL # 3  
IF 3 CHAN 1 STK LL of J1430+1043.ICL001.3



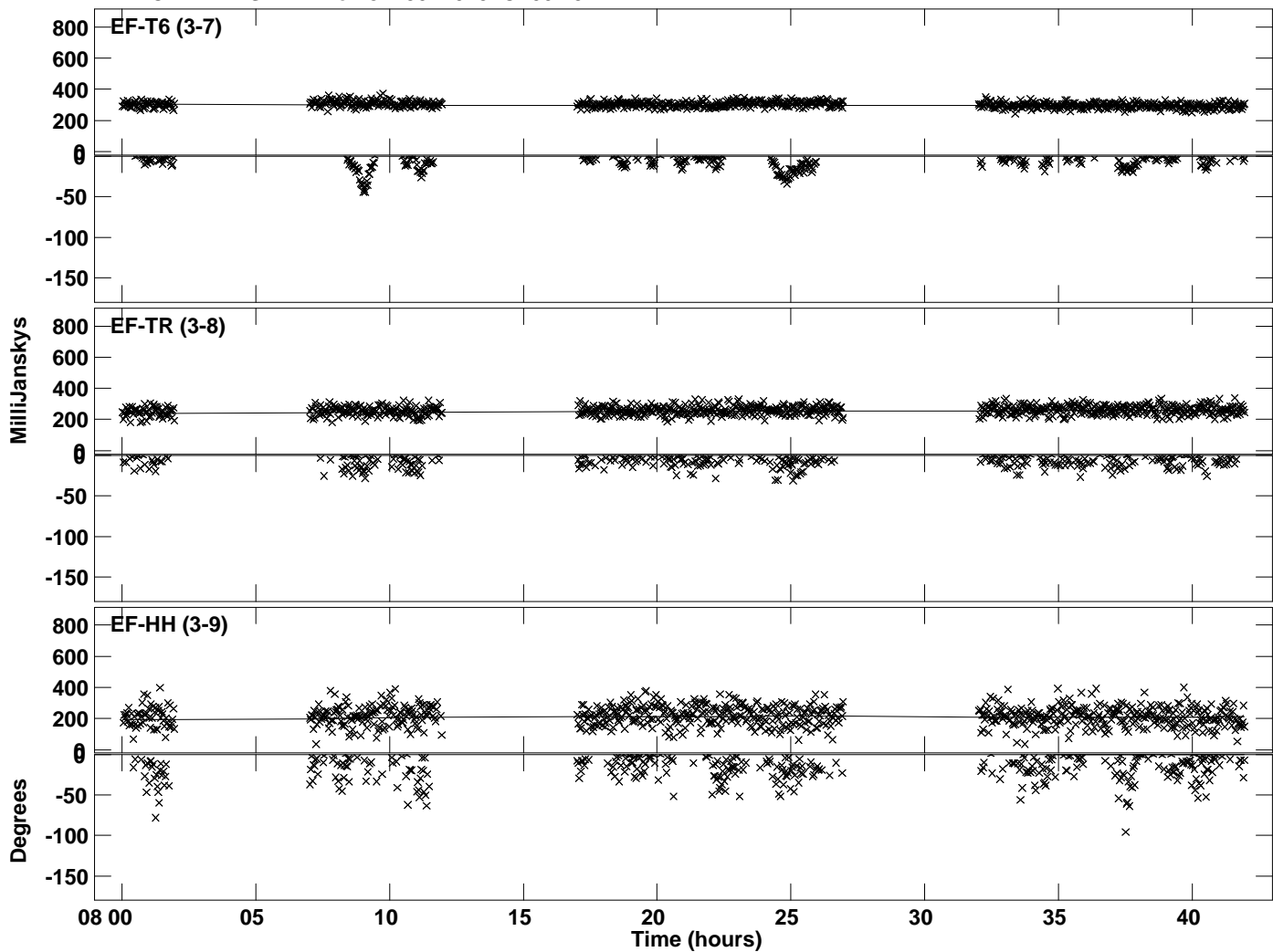
PLot file version 6 created 12-DEC-2023 16:46:18  
Amplitude andPhase vs Time for J1430+1043.MULTI.1 CL # 3  
IF 3 CHAN 1 STK LL of J1430+1043.ICL001.3



Plot file version 7 created 12-DEC-2023 16:46:19  
Amplitude and Phase vs Time for J1430+1043.MULTI.1 CL # 3  
IF 4 CHAN 1 STK LL of J1430+1043.ICL001.3

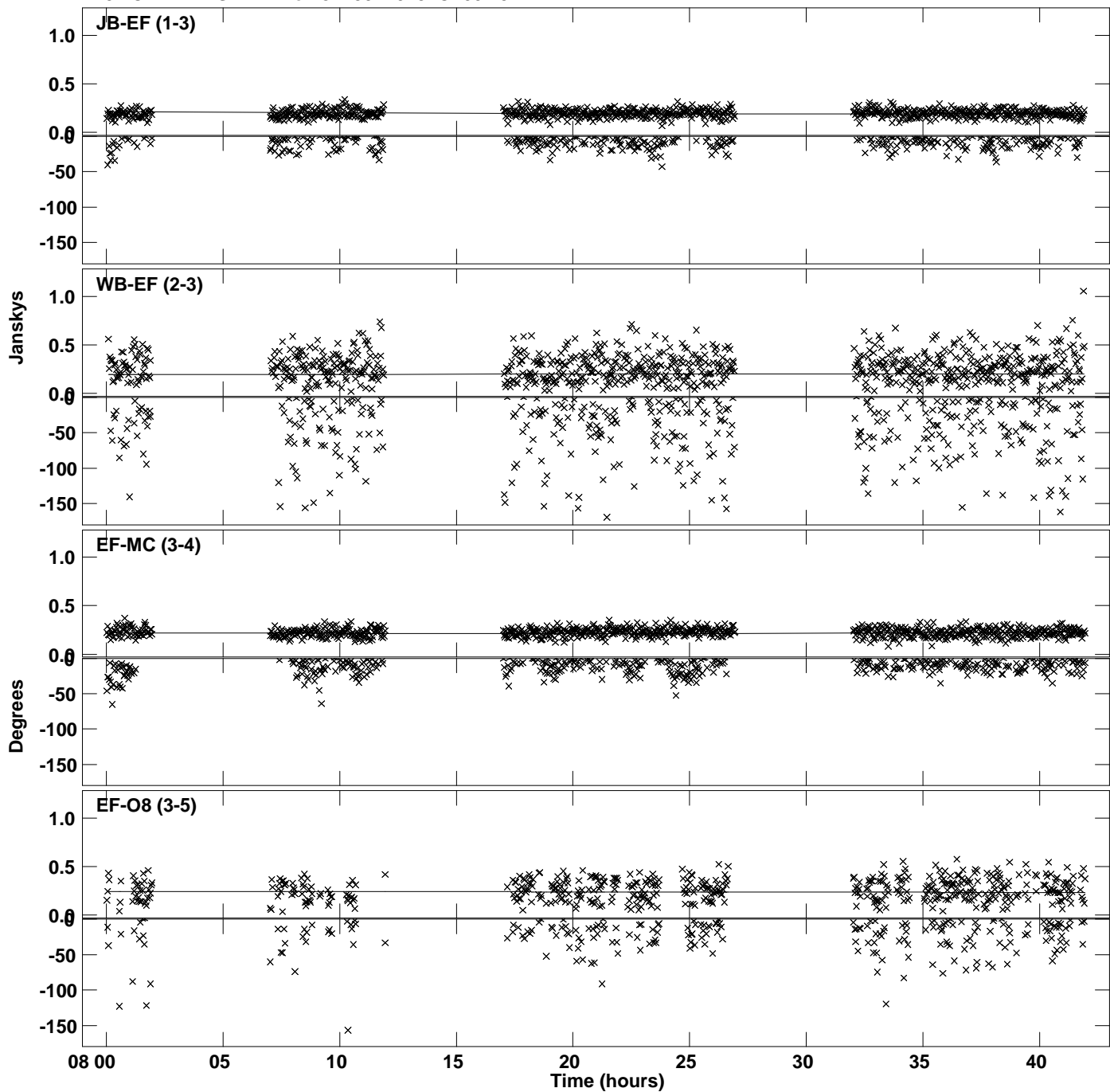


Plot file version 8 created 12-DEC-2023 16:46:19  
Amplitude and Phase vs Time for J1430+1043.MULTI.1 CL # 3  
IF 4 CHAN 1 STK LL of J1430+1043.ICL001.3

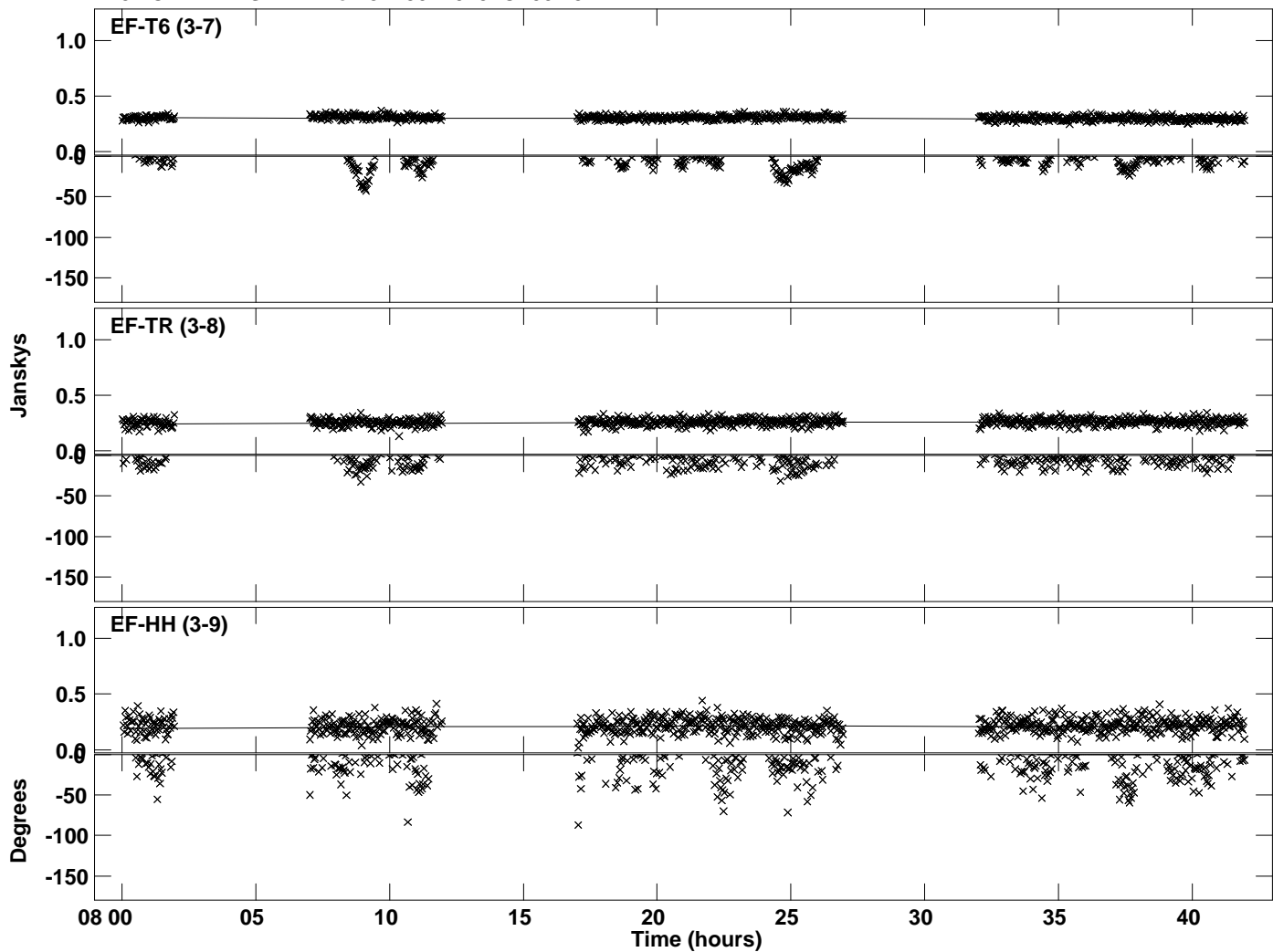




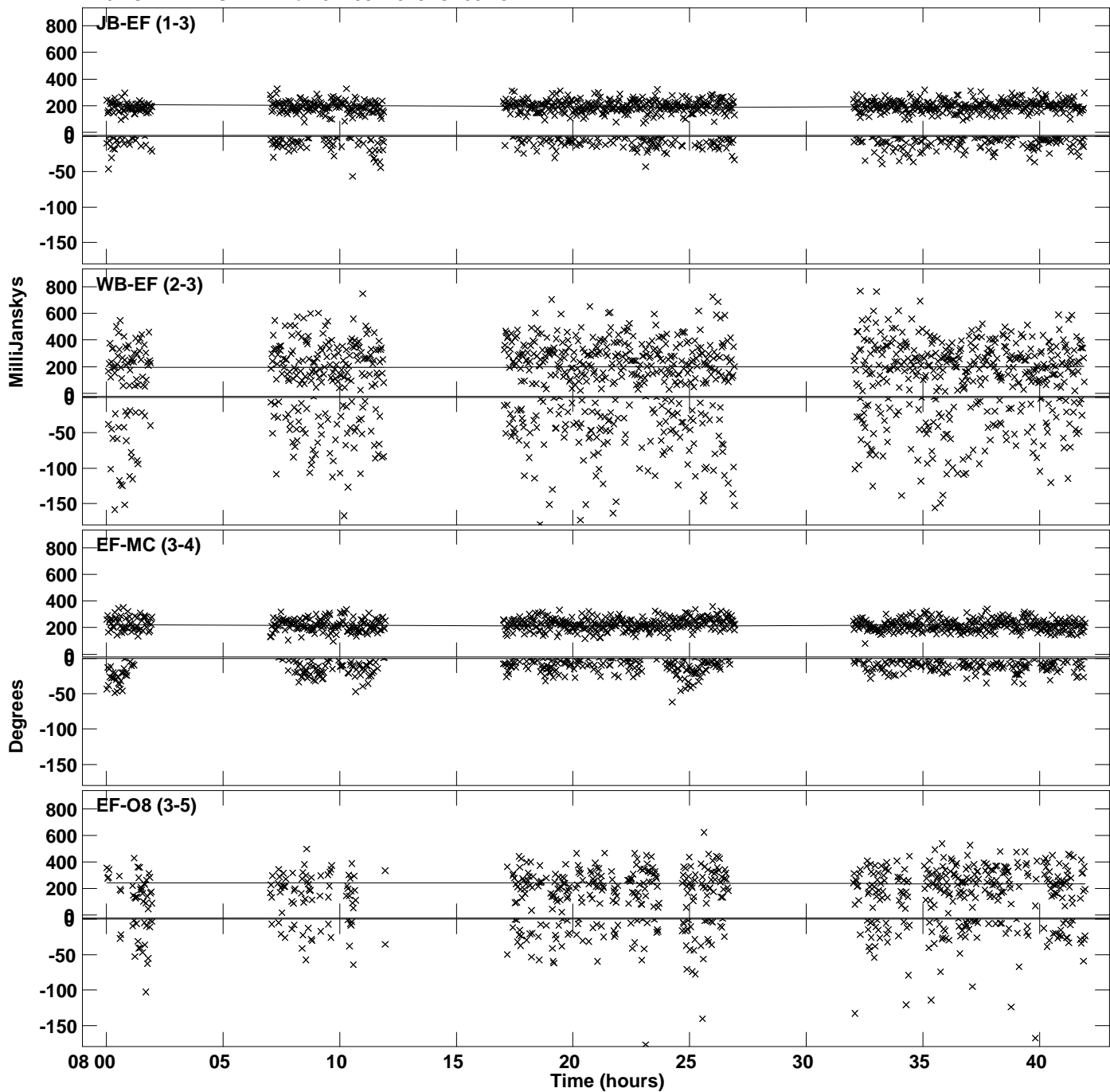
Plot file version 9 created 12-DEC-2023 16:46:19  
Amplitude and Phase vs Time for J1430+1043.MULTI.1 CL # 3  
IF 5 CHAN 1 STK LL of J1430+1043.ICL001.3



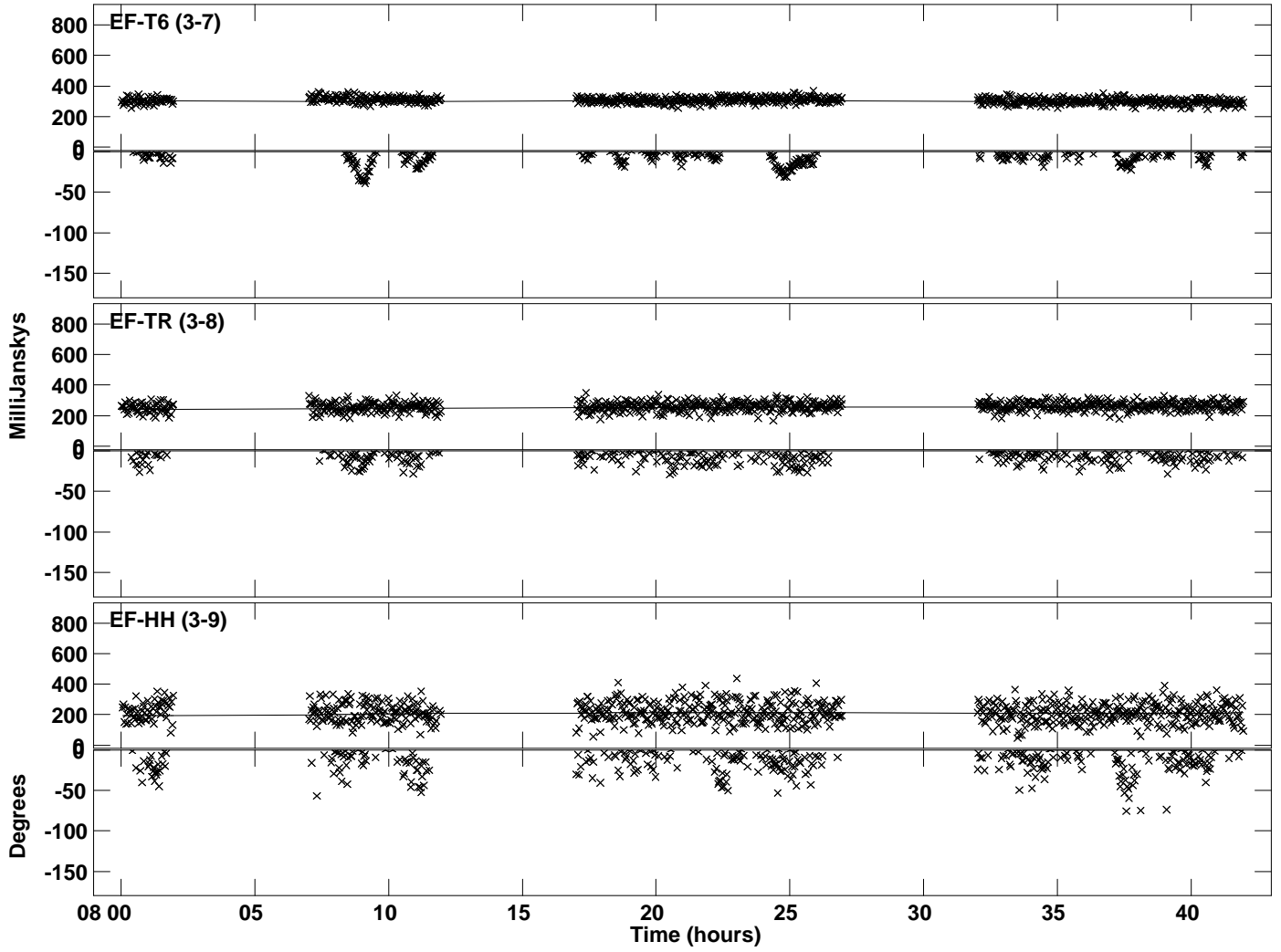
Plot file version 10 created 12-DEC-2023 16:46:19  
Amplitude and Phase vs Time for J1430+1043.MULTI.1 CL # 3  
IF 5 CHAN 1 STK LL of J1430+1043.ICL001.3



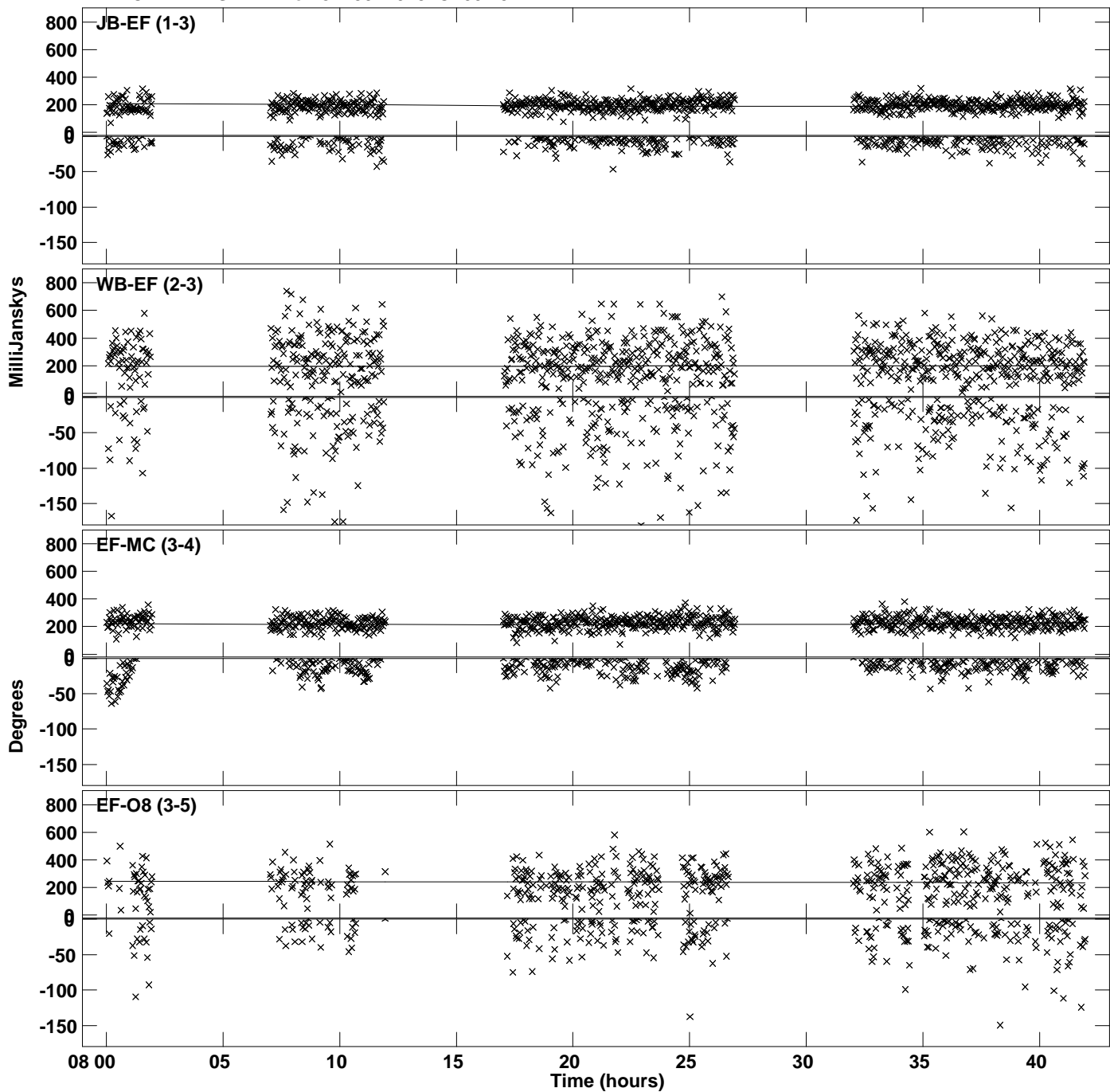
Plot file version 11 created 12-DEC-2023 16:46:20  
Amplitude and Phase vs Time for J1430+1043.MULTI.1 CL # 3  
IF 6 CHAN 1 STK LL of J1430+1043.ICL001.3



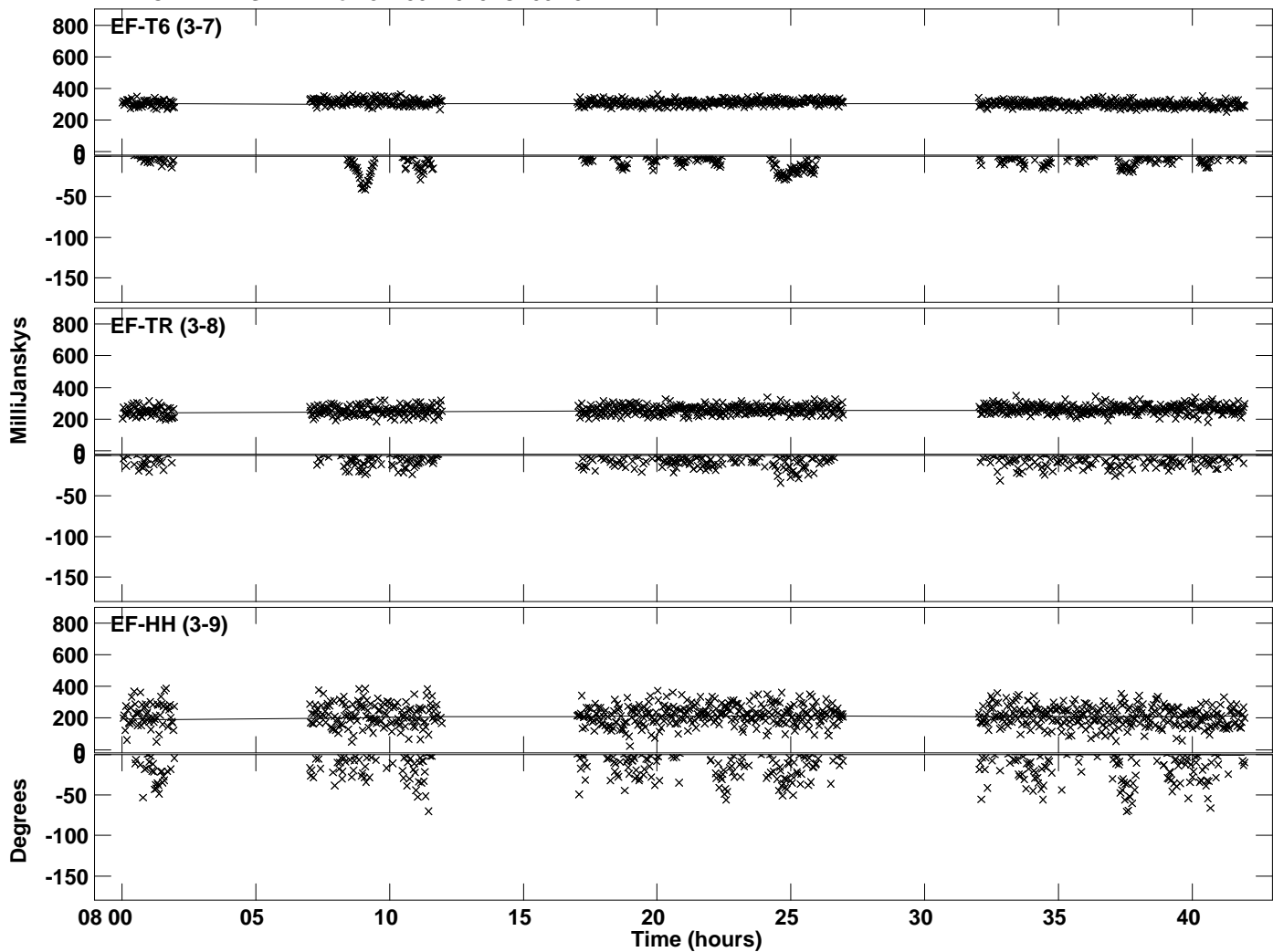
PLot file version 12 created 12-DEC-2023 16:46:20  
Amplitude and Phase vs Time for J1430+1043.MULTI.1 CL # 3  
IF 6 CHAN 1 STK LL of J1430+1043.ICL001.3



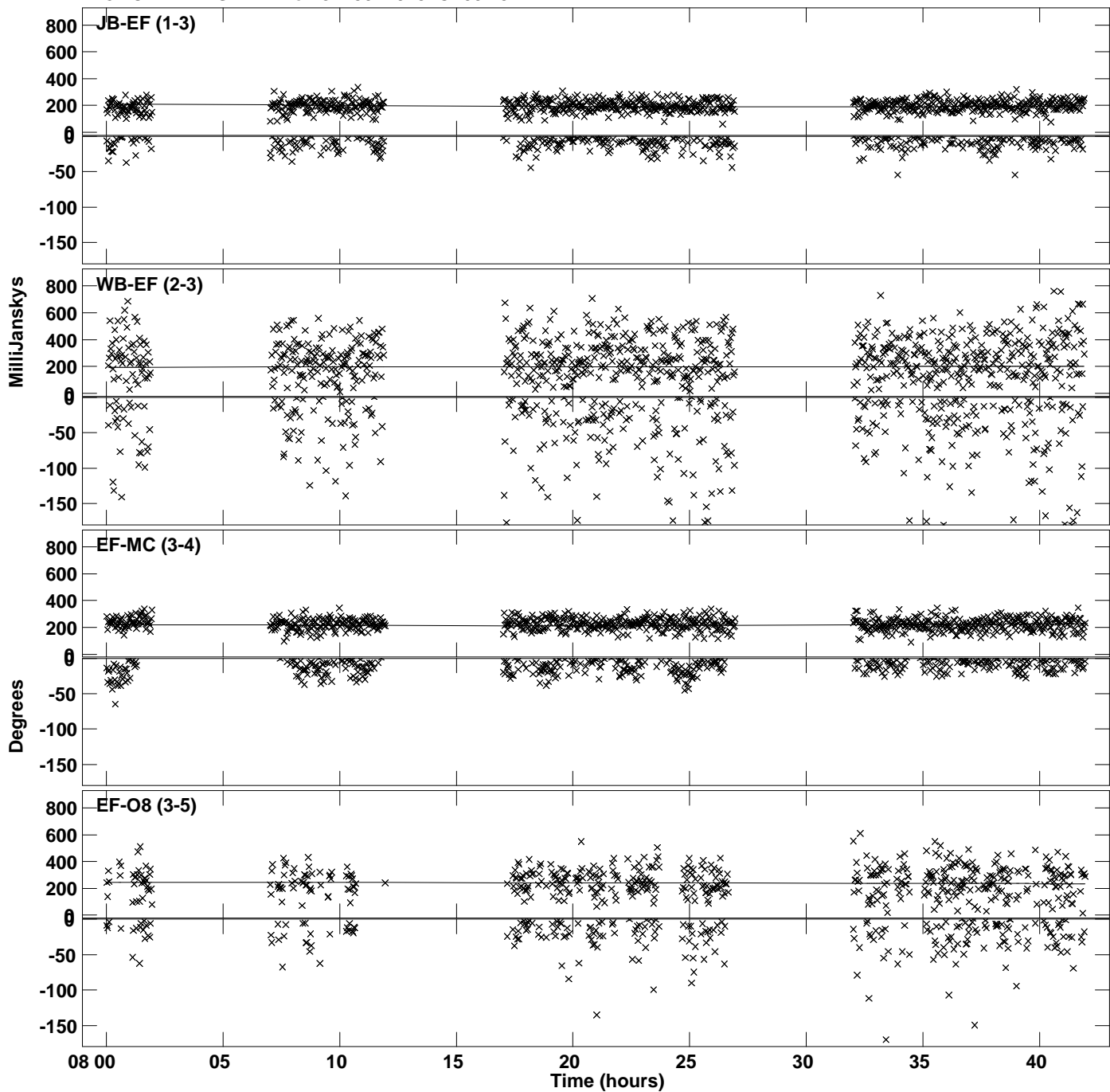
Plot file version 13 created 12-DEC-2023 16:46:20  
Amplitude and Phase vs Time for J1430+1043.MULTI.1 CL # 3  
IF 7 CHAN 1 STK LL of J1430+1043.ICL001.3



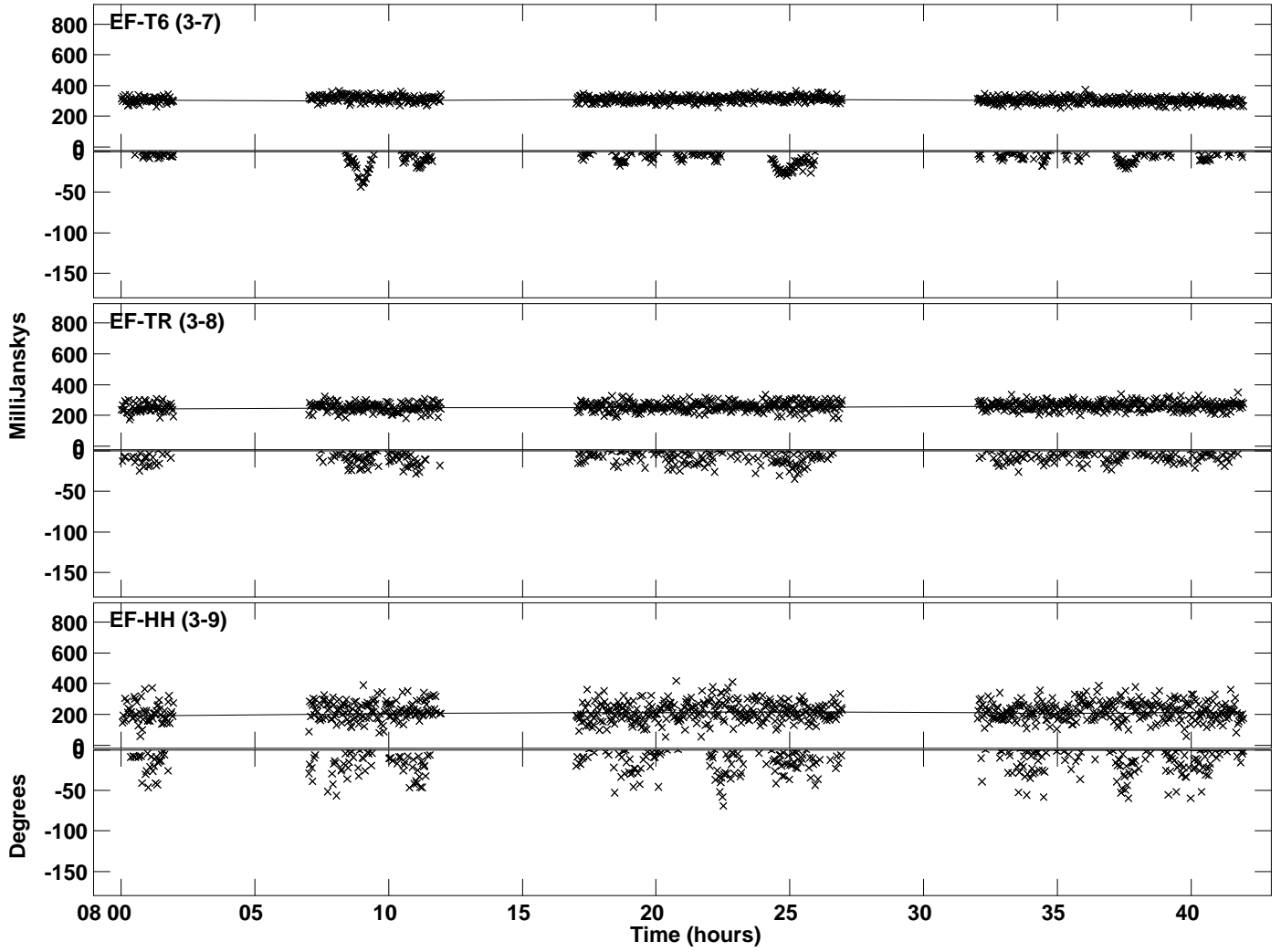
Plot file version 14 created 12-DEC-2023 16:46:20  
Amplitude andPhase vs Time for J1430+1043.MULTI.1 CL # 3  
IF 7 CHAN 1 STK LL of J1430+1043.ICL001.3



Plot file version 15 created 12-DEC-2023 16:46:20  
Amplitude and Phase vs Time for J1430+1043.MULTI.1 CL # 3  
IF 8 CHAN 1 STK LL of J1430+1043.ICL001.3

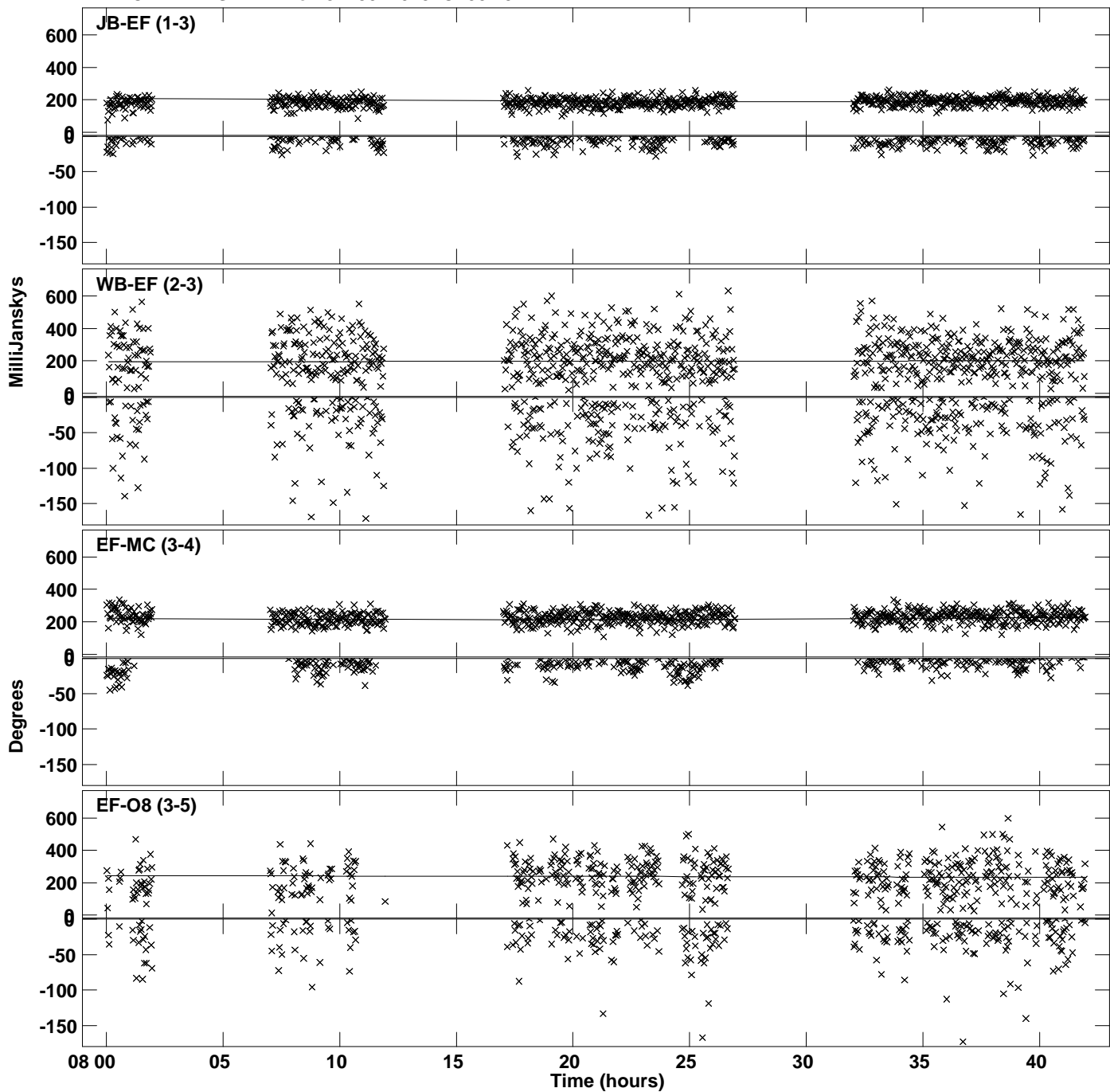


Plot file version 16 created 12-DEC-2023 16:46:20  
Amplitude and Phase vs Time for J1430+1043.MULTI.1 CL # 3  
IF 8 CHAN 1 STK LL of J1430+1043.ICL001.3

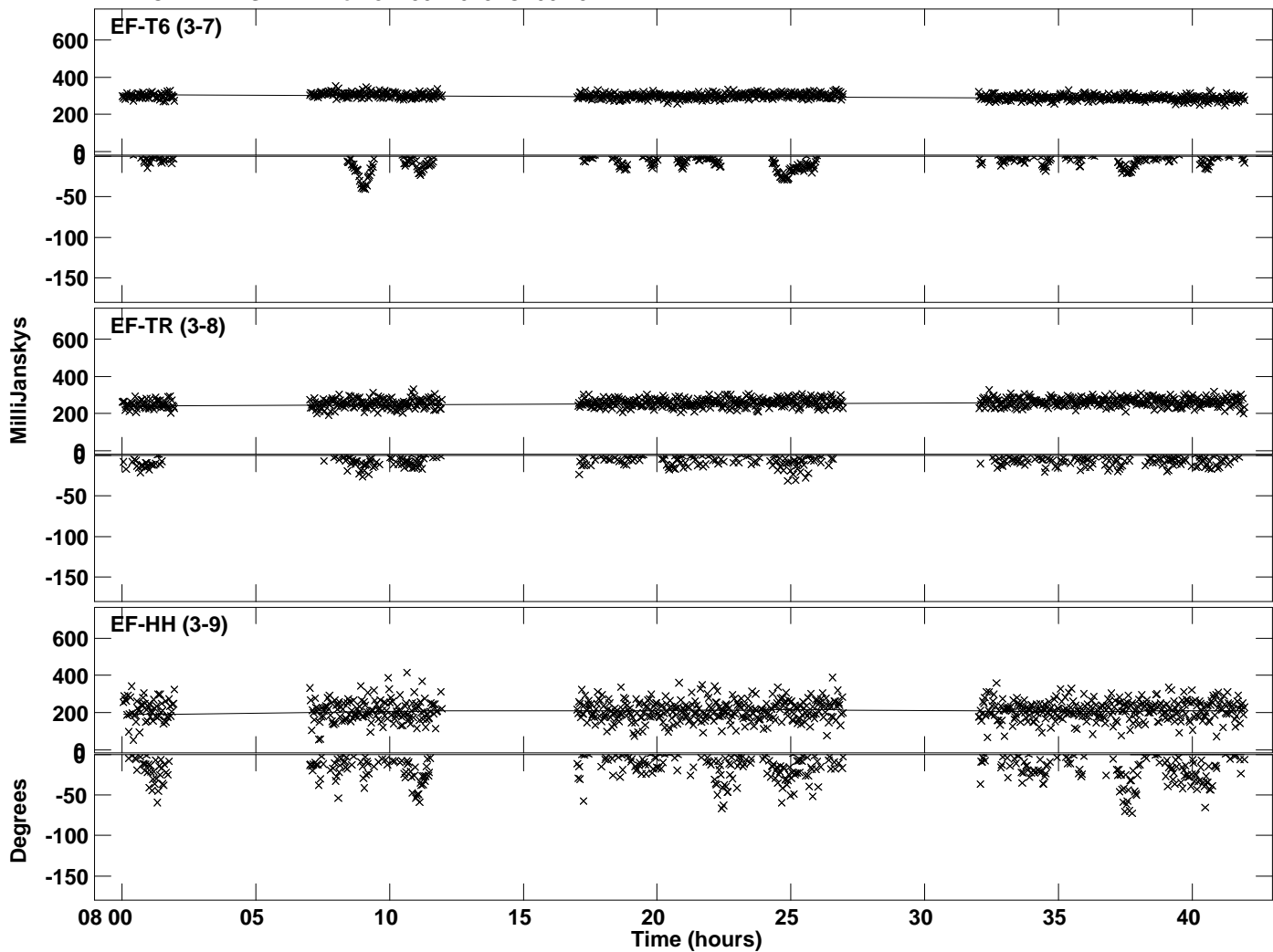




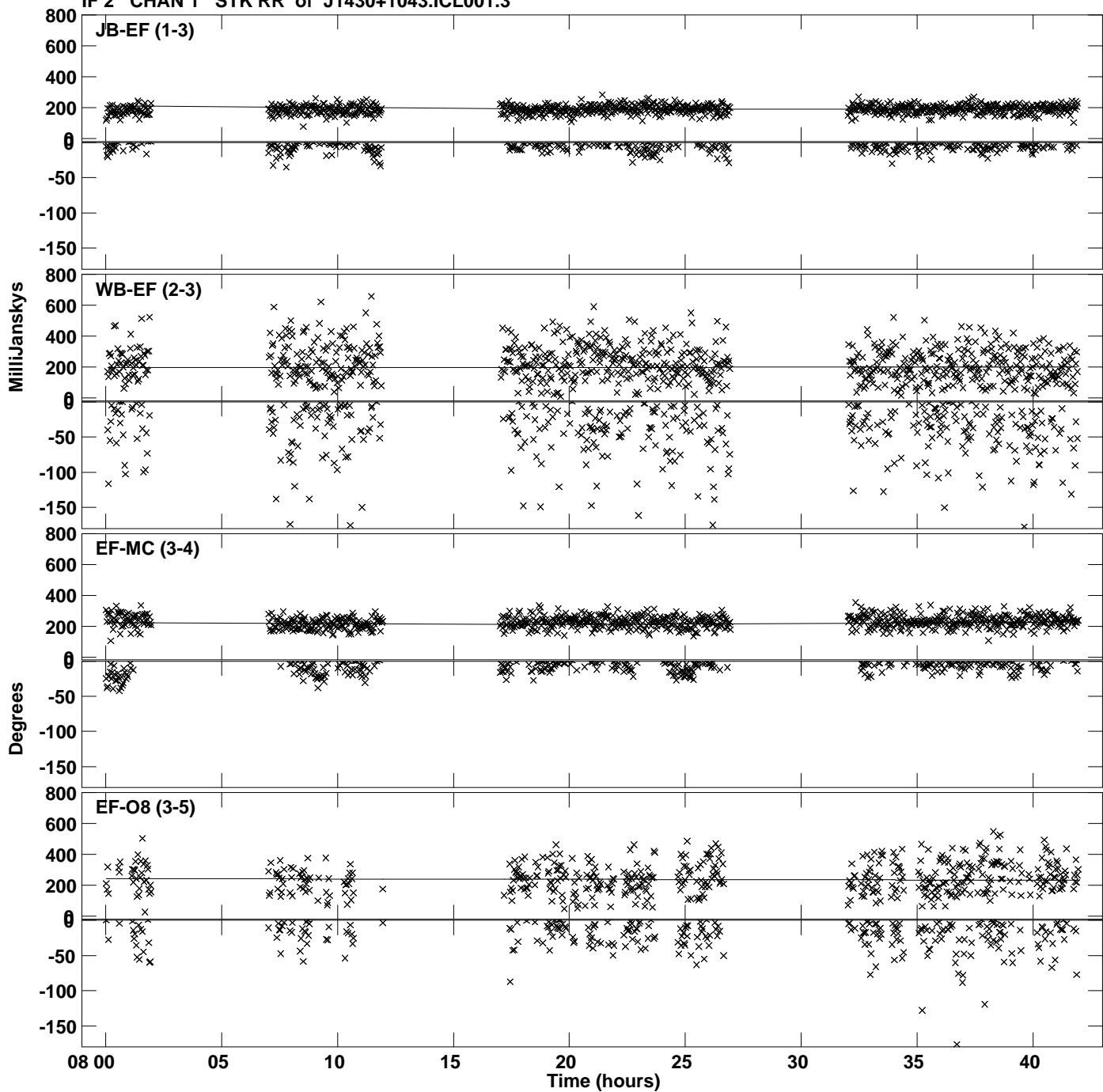
Plot file version 17 created 12-DEC-2023 16:46:21  
Amplitude andPhase vs Time for J1430+1043.MULTI.1 CL # 3  
IF 1 CHAN 1 STK RR of J1430+1043.ICL001.3



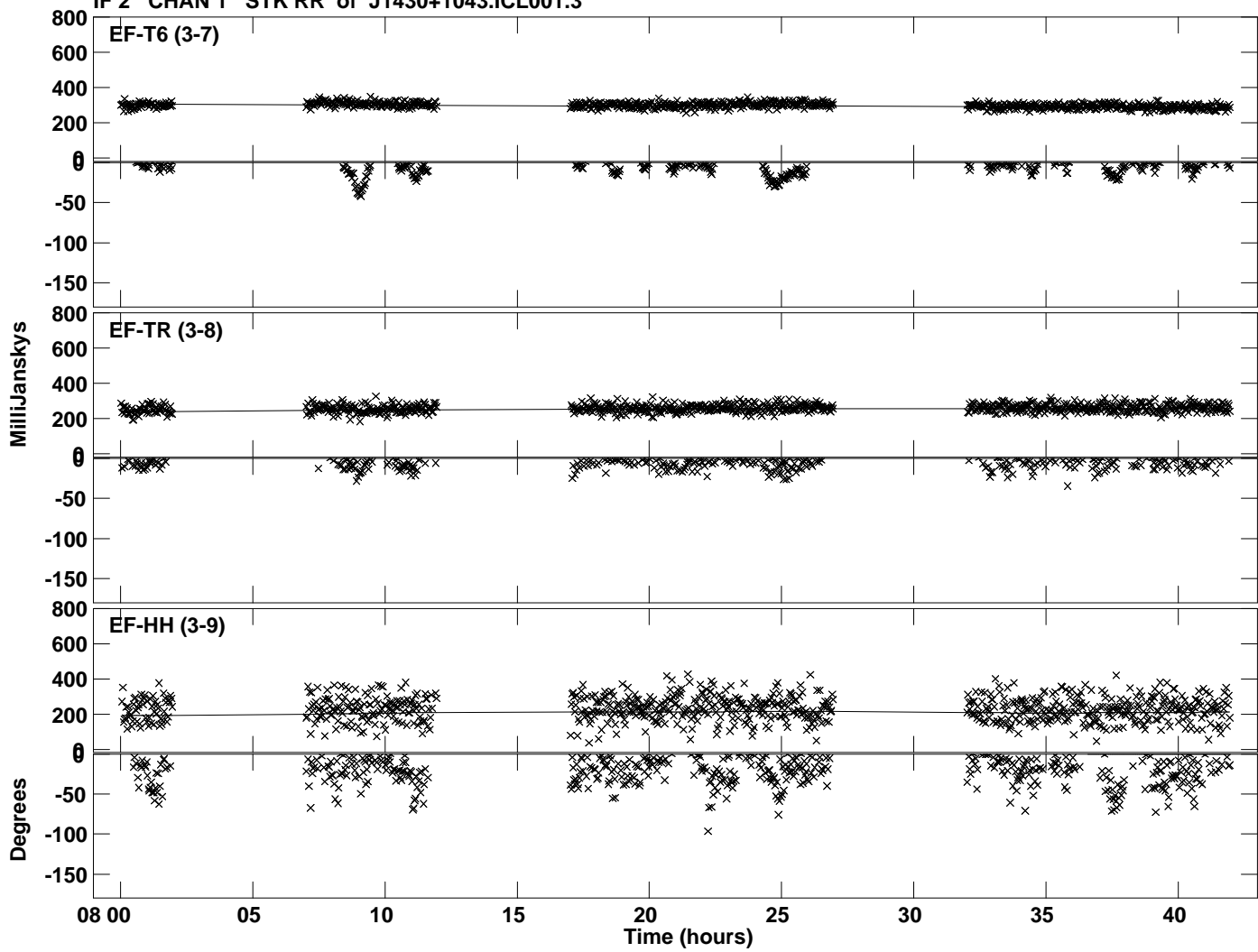
Plot file version 18 created 12-DEC-2023 16:46:21  
Amplitude and Phase vs Time for J1430+1043.MULTI.1 CL # 3  
IF 1 CHAN 1 STK RR of J1430+1043.ICL001.3



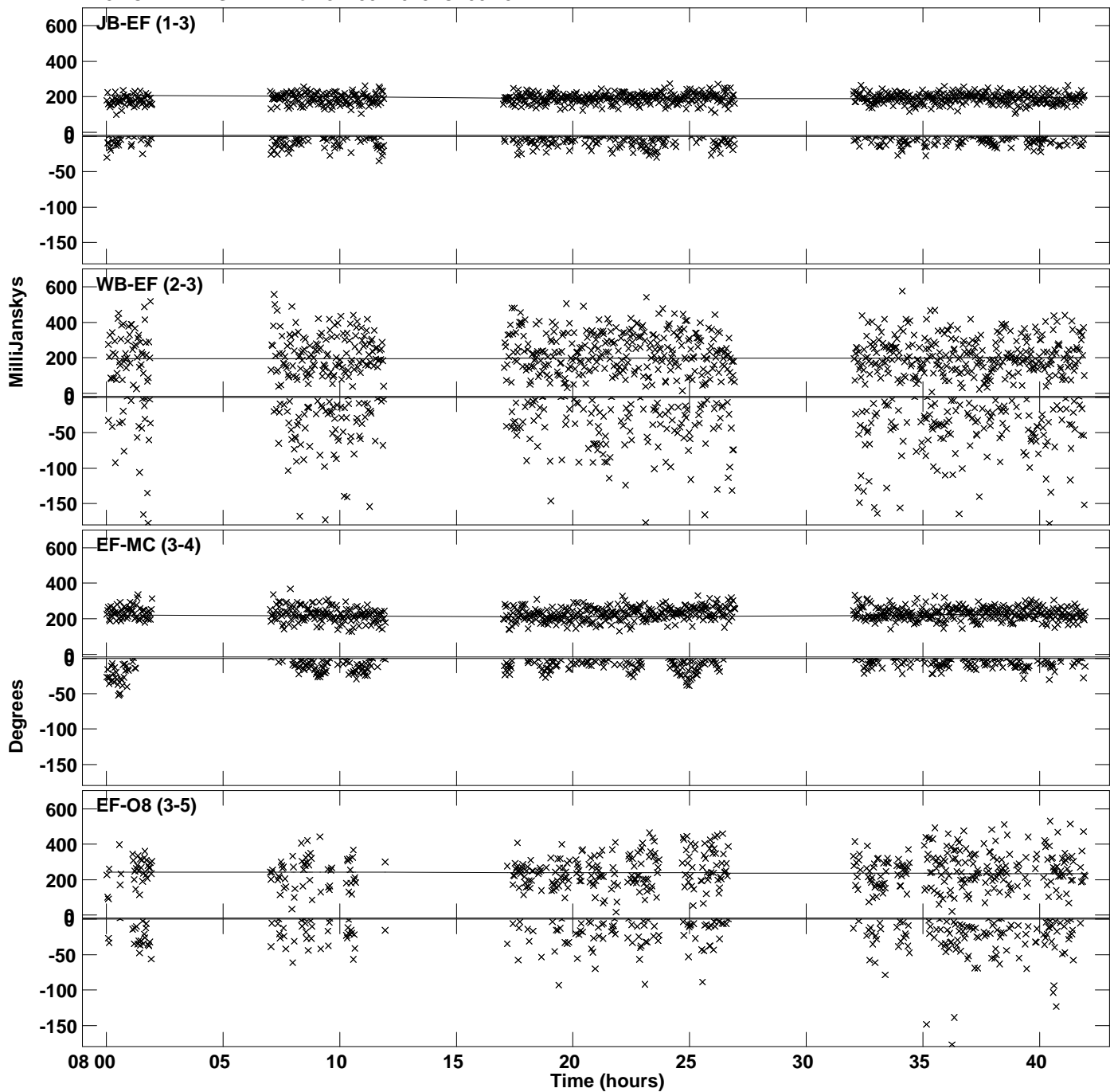
Plot file version 19 created 12-DEC-2023 16:46:21  
Amplitude andPhase vs Time for J1430+1043.MULTI.1 CL # 3  
IF 2 CHAN 1 STK RR of J1430+1043.ICL001.3



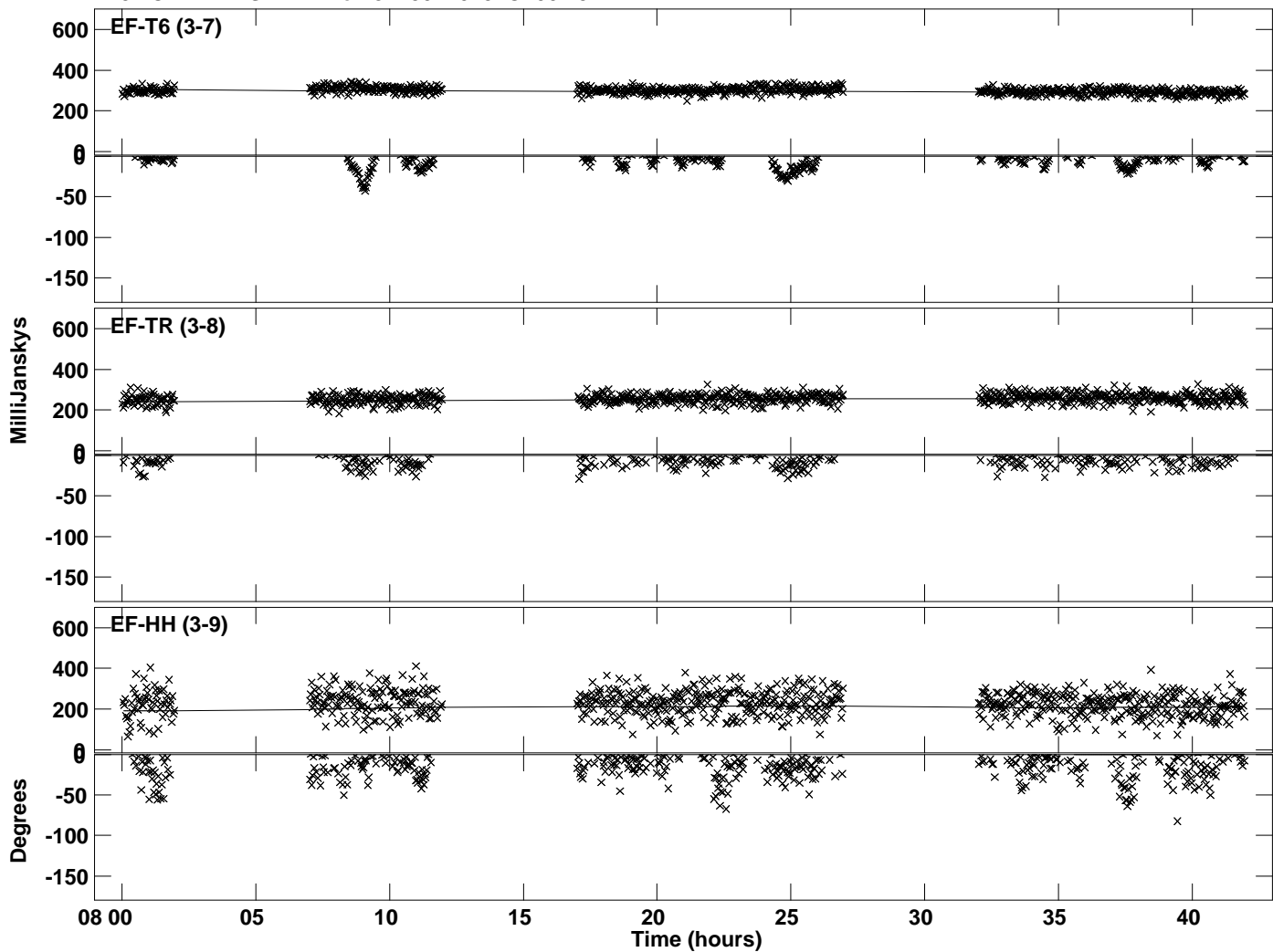
Plot file version 20 created 12-DEC-2023 16:46:21  
Amplitude and Phase vs Time for J1430+1043.MULTI.1 CL # 3  
IF 2 CHAN 1 STK RR of J1430+1043.ICL001.3



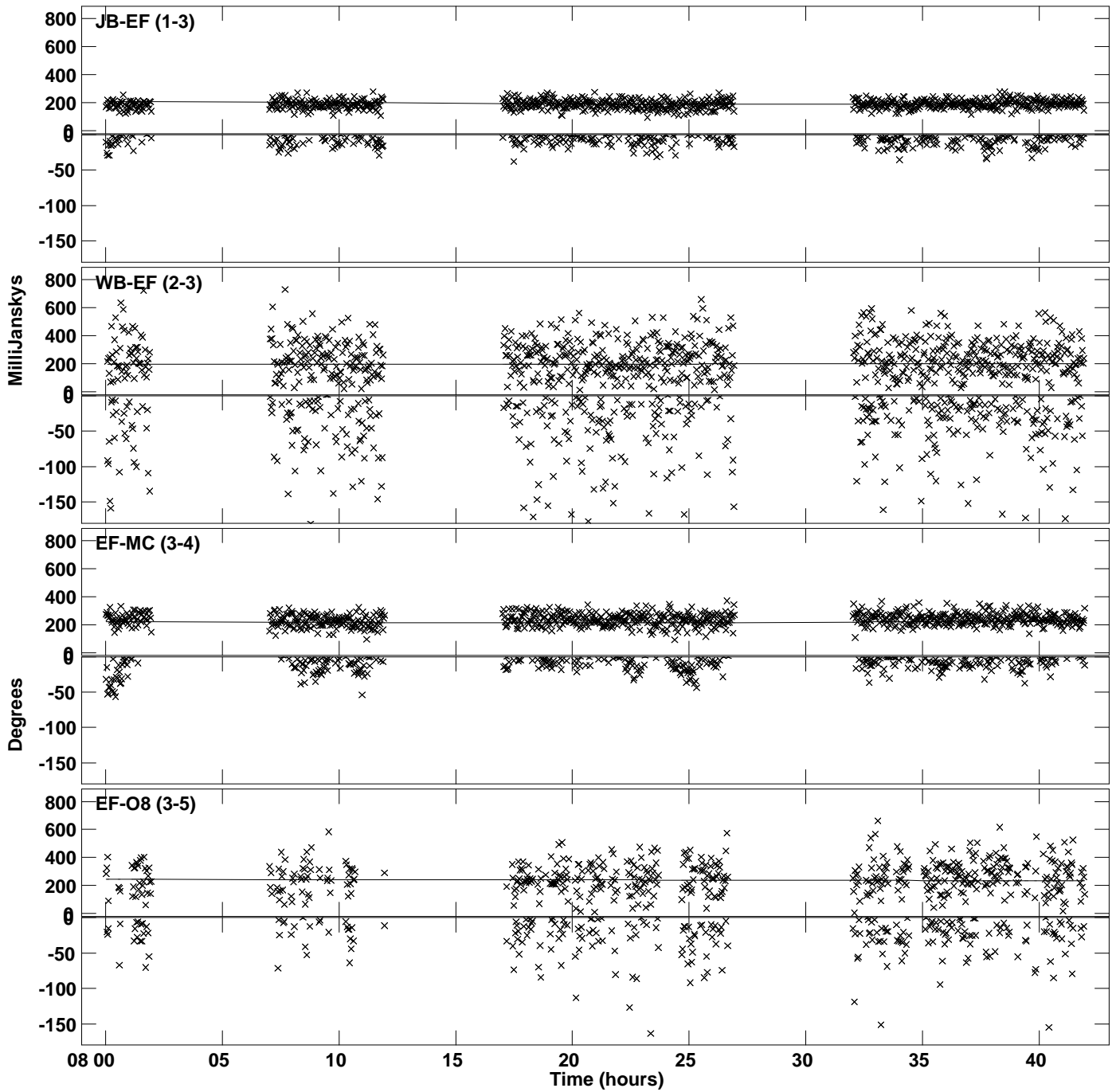
Plot file version 21 created 12-DEC-2023 16:46:21  
Amplitude andPhase vs Time for J1430+1043.MULTI.1 CL # 3  
IF 3 CHAN 1 STK RR of J1430+1043.ICL001.3



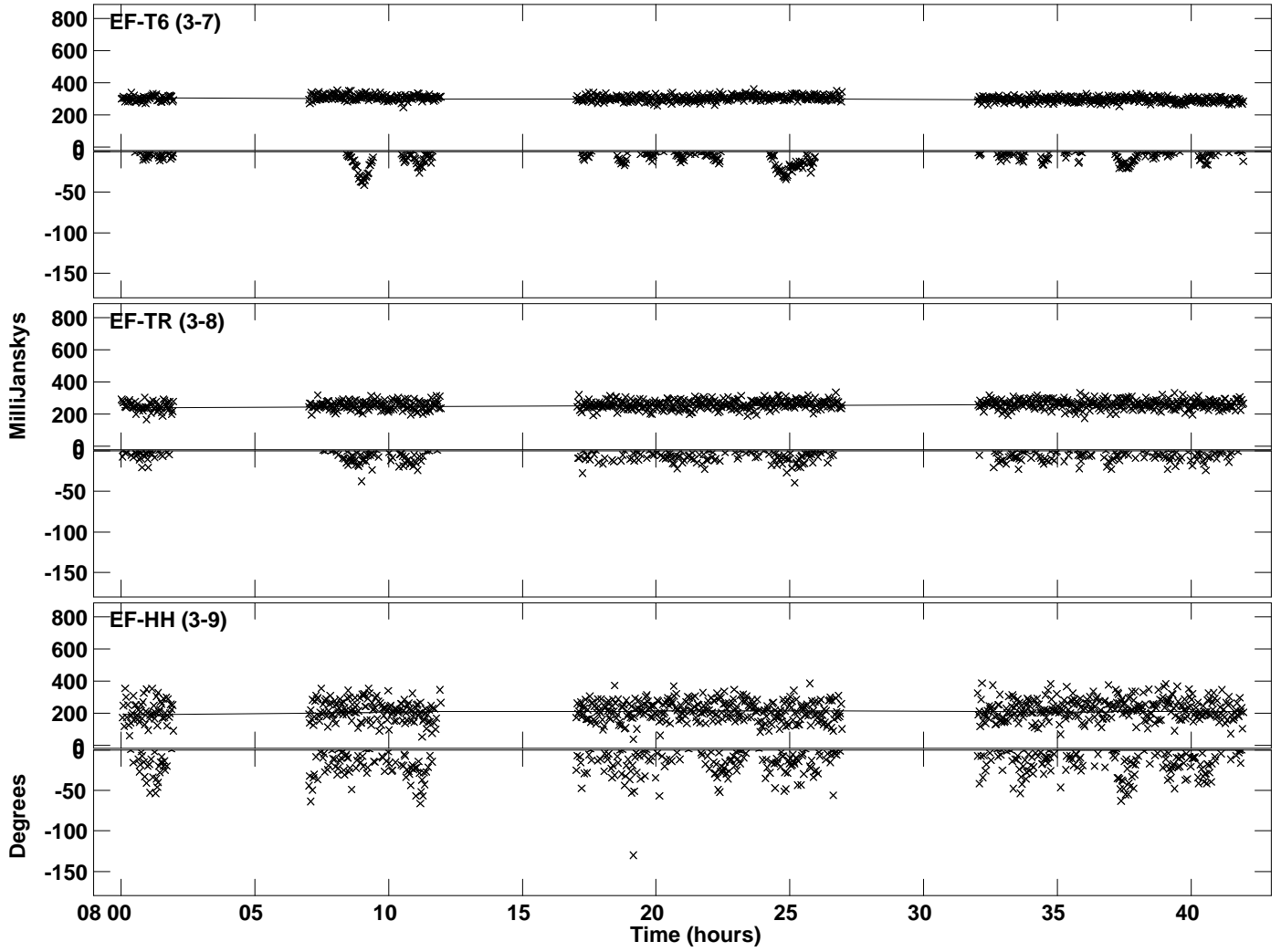
Plot file version 22 created 12-DEC-2023 16:46:21  
Amplitude and Phase vs Time for J1430+1043.MULTI.1 CL # 3  
IF 3 CHAN 1 STK RR of J1430+1043.ICL001.3



Plot file version 23 created 12-DEC-2023 16:46:22  
Amplitude and Phase vs Time for J1430+1043.MULTI.1 CL # 3  
IF 4 CHAN 1 STK RR of J1430+1043.ICL001.3

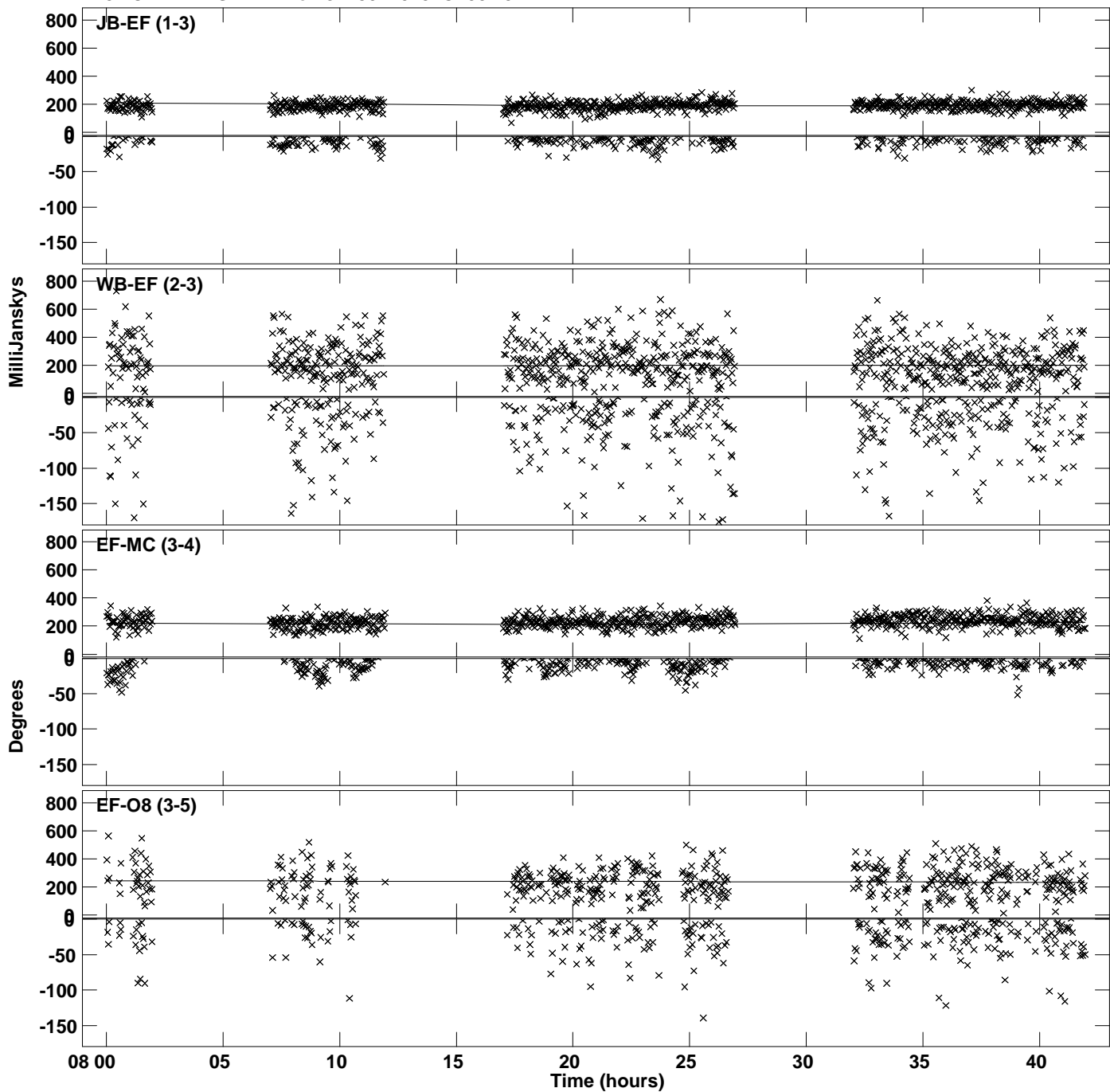


PLot file version 24 created 12-DEC-2023 16:46:22  
Amplitude andPhase vs Time for J1430+1043.MULTI.1 CL # 3  
IF 4 CHAN 1 STK RR of J1430+1043.ICL001.3

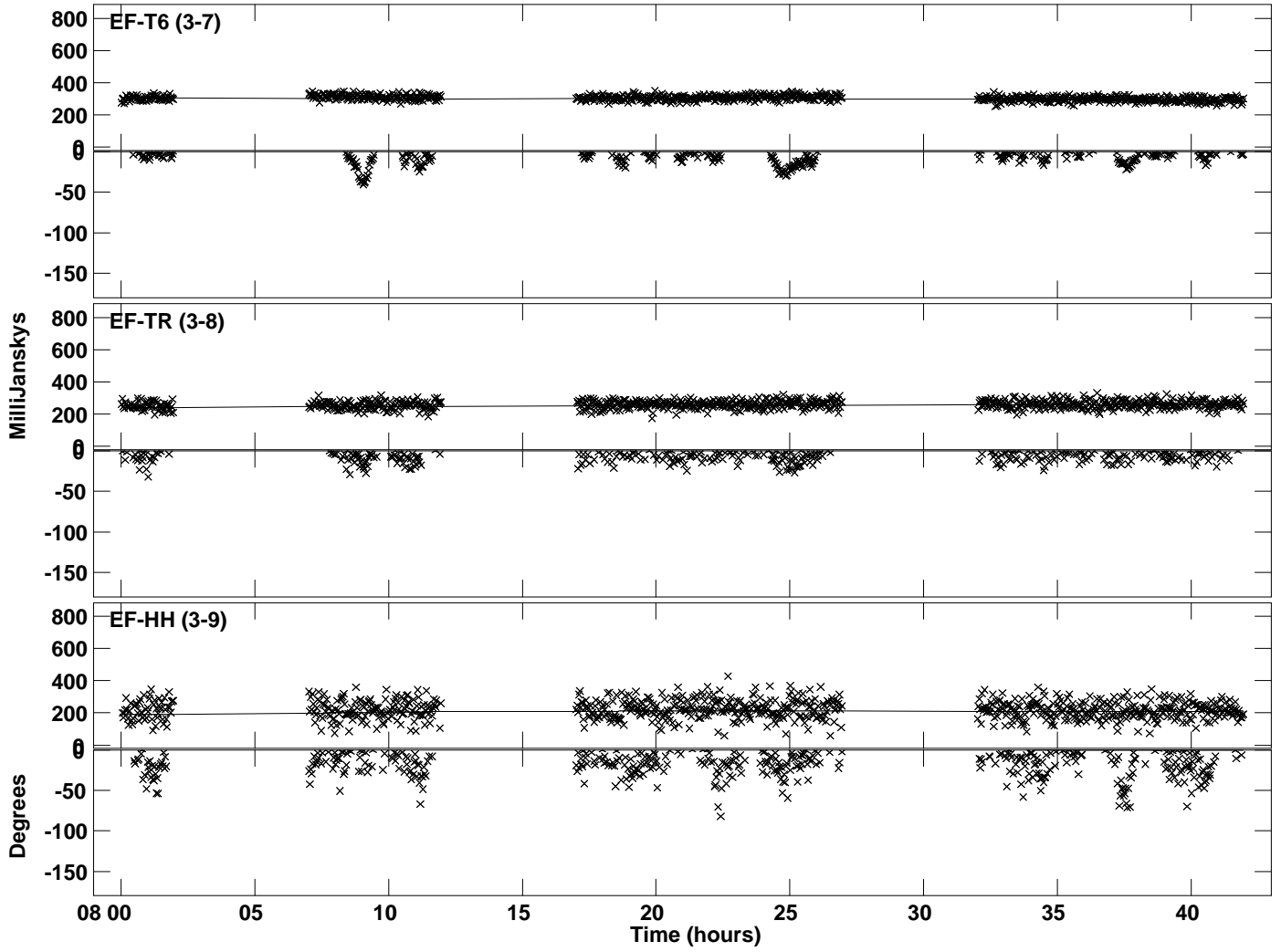




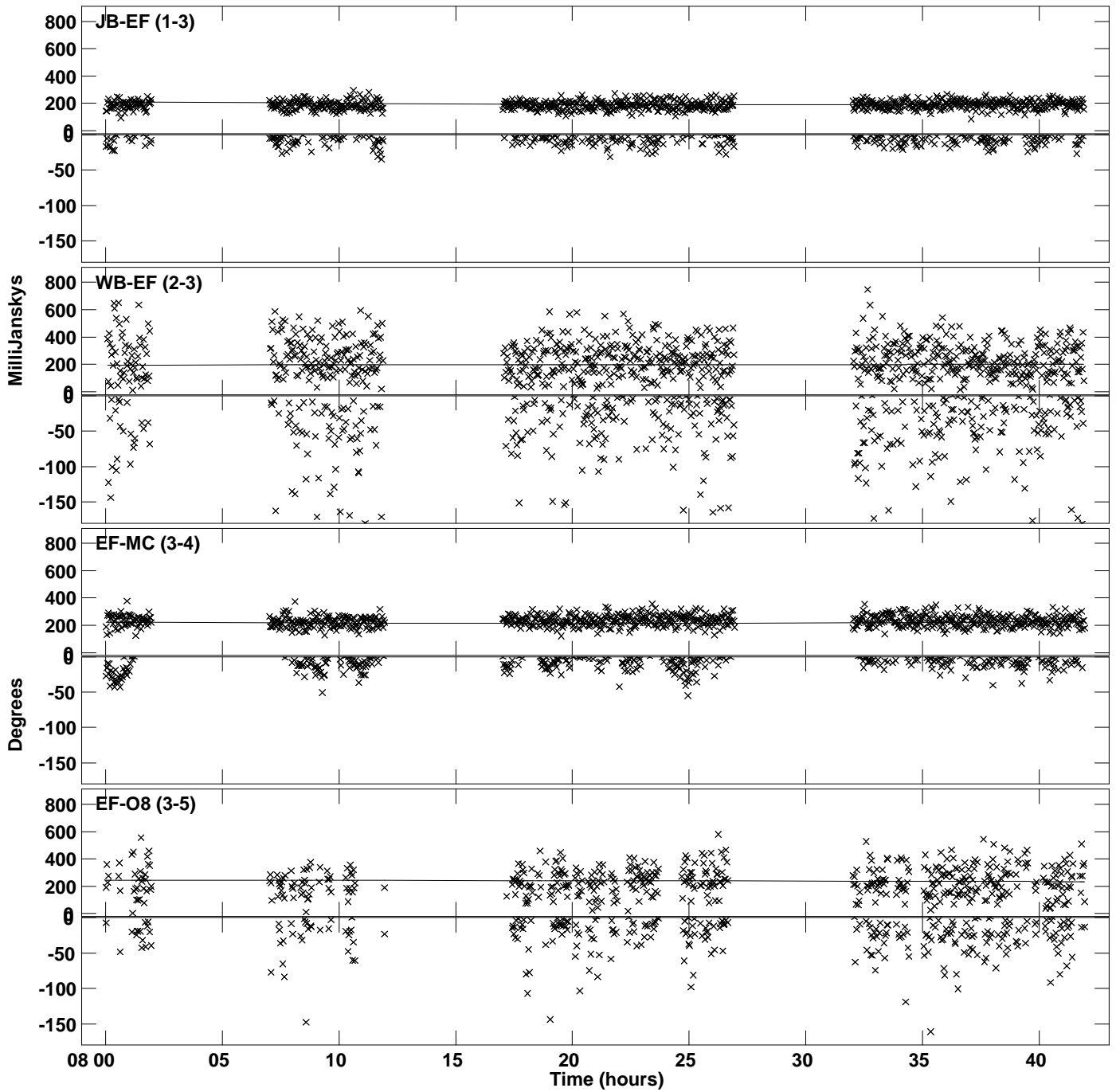
Plot file version 25 created 12-DEC-2023 16:46:22  
Amplitude and Phase vs Time for J1430+1043.MULTI.1 CL # 3  
IF 5 CHAN 1 STK RR of J1430+1043.ICL001.3



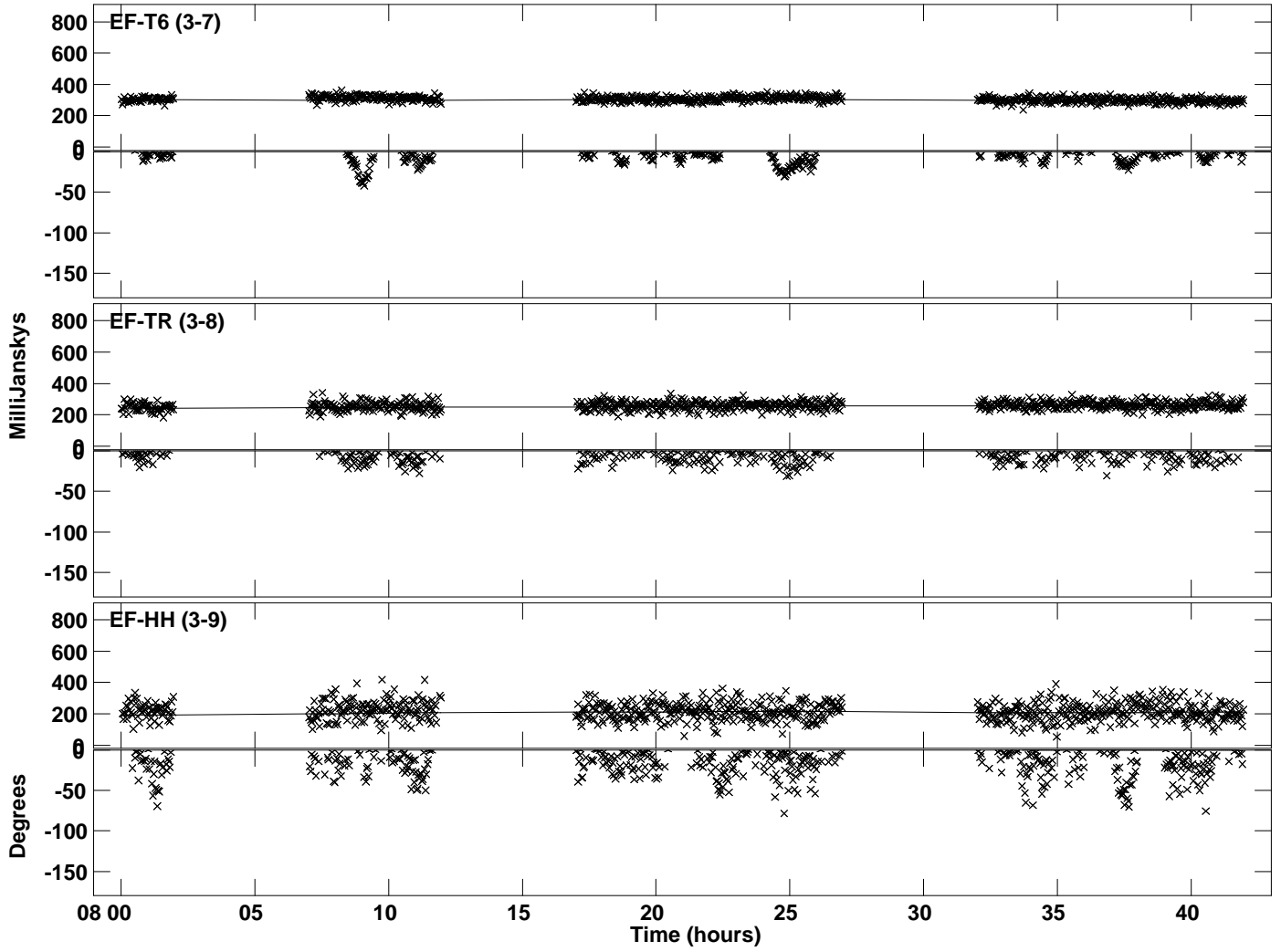
Plot file version 26 created 12-DEC-2023 16:46:22  
Amplitude and Phase vs Time for J1430+1043.MULTI.1 CL # 3  
IF 5 CHAN 1 STK RR of J1430+1043.ICL001.3



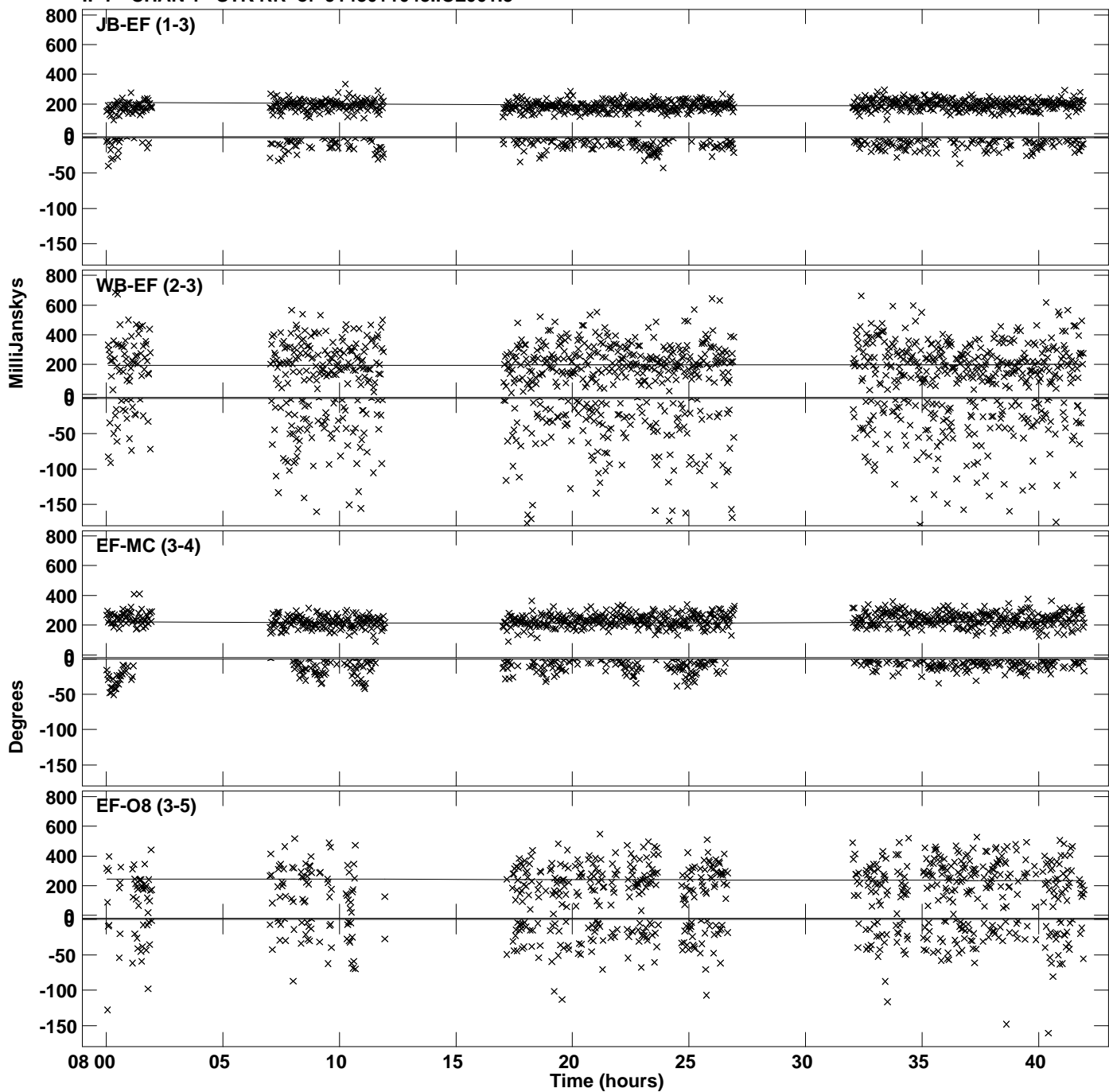
PLot file version 27 created 12-DEC-2023 16:46:22  
Amplitude andPhase vs Time for J1430+1043.MULTI.1 CL # 3  
IF 6 CHAN 1 STK RR of J1430+1043.ICL001.3



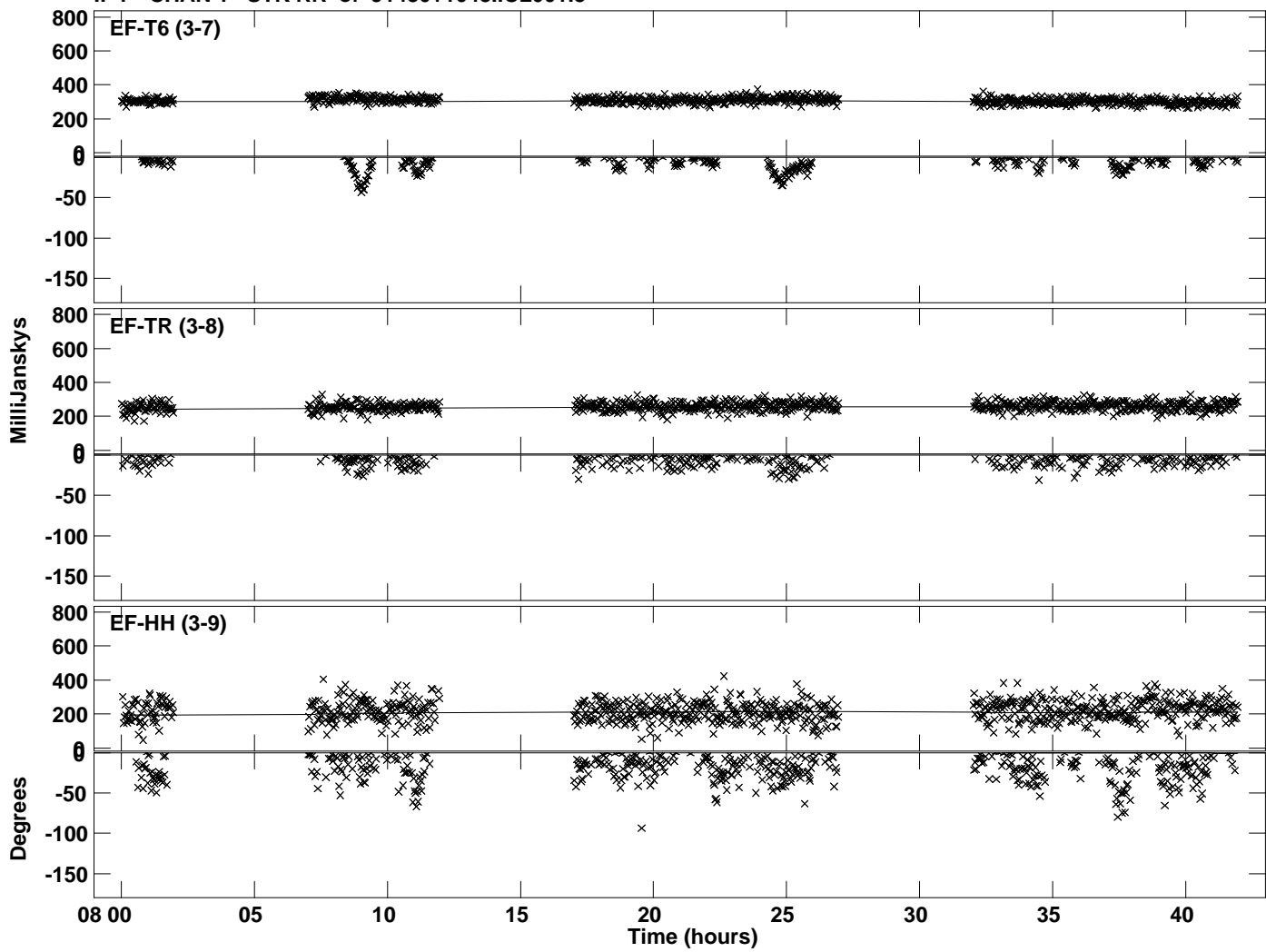
Plot file version 28 created 12-DEC-2023 16:46:22  
Amplitude and Phase vs Time for J1430+1043.MULTI.1 CL # 3  
IF 6 CHAN 1 STK RR of J1430+1043.ICL001.3



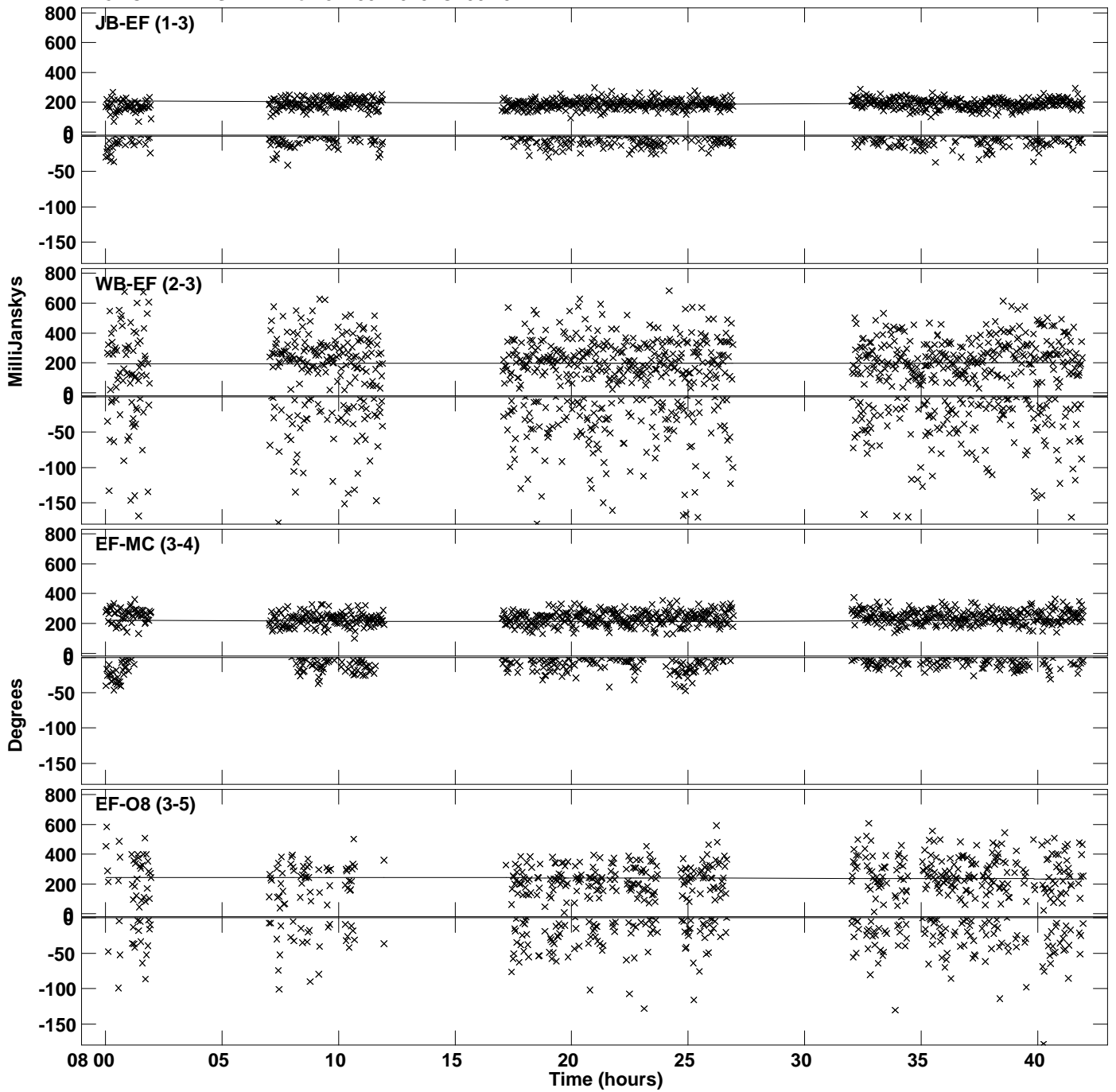
Plot file version 29 created 12-DEC-2023 16:46:23  
Amplitude andPhase vs Time for J1430+1043.MULTI.1 CL # 3  
IF 7 CHAN 1 STK RR of J1430+1043.ICL001.3



Plot file version 30 created 12-DEC-2023 16:46:23  
Amplitude and Phase vs Time for J1430+1043.MULTI.1 CL # 3  
IF 7 CHAN 1 STK RR of J1430+1043.ICL001.3



Plot file version 31 created 12-DEC-2023 16:46:23  
Amplitude and Phase vs Time for J1430+1043.MULTI.1 CL # 3  
IF 8 CHAN 1 STK RR of J1430+1043.ICL001.3



PLot file version 32 created 12-DEC-2023 16:46:23  
Amplitude andPhase vs Time for J1430+1043.MULTI.1 CL # 3  
IF 8 CHAN 1 STK RR of J1430+1043.ICL001.3

