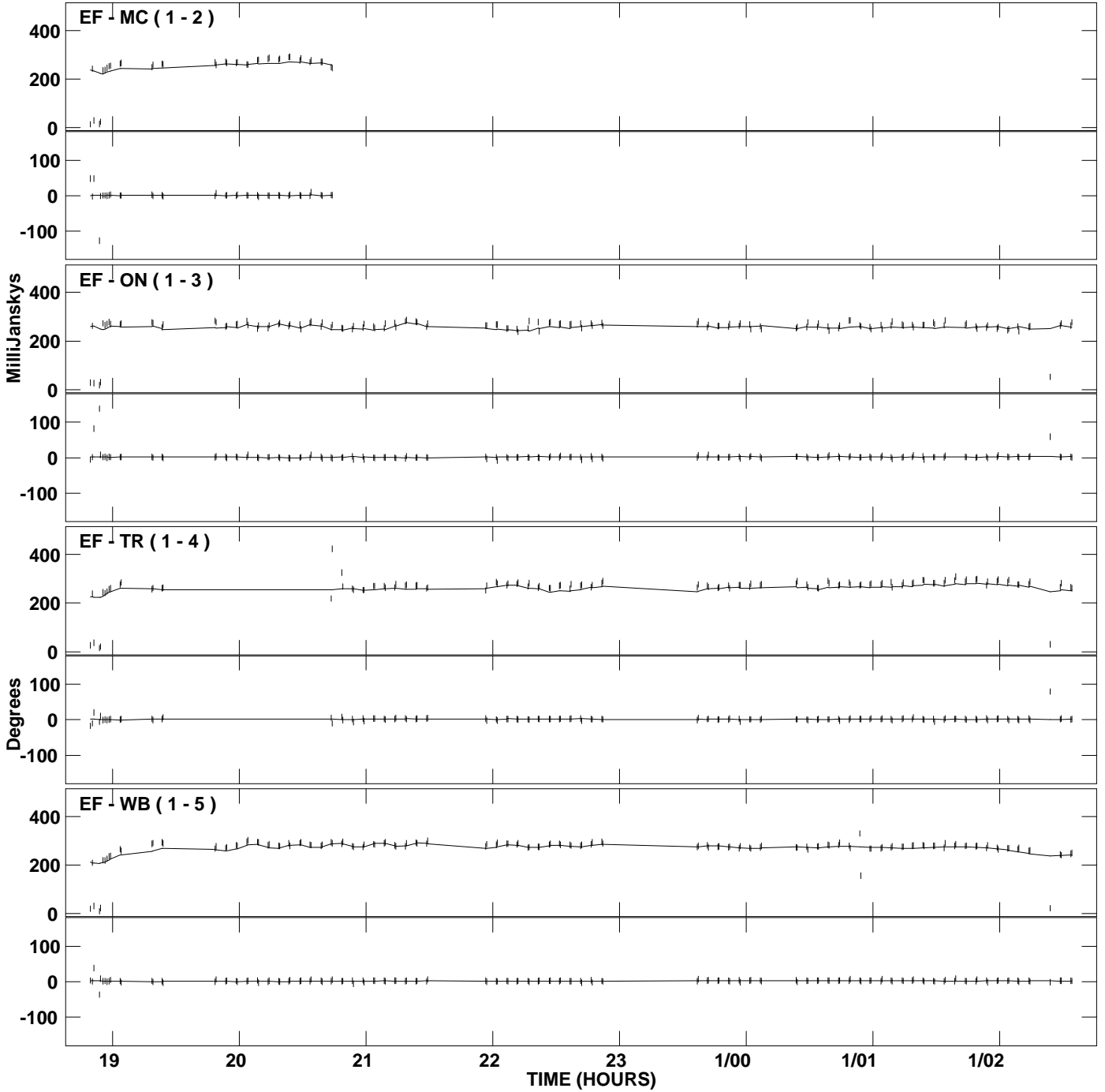
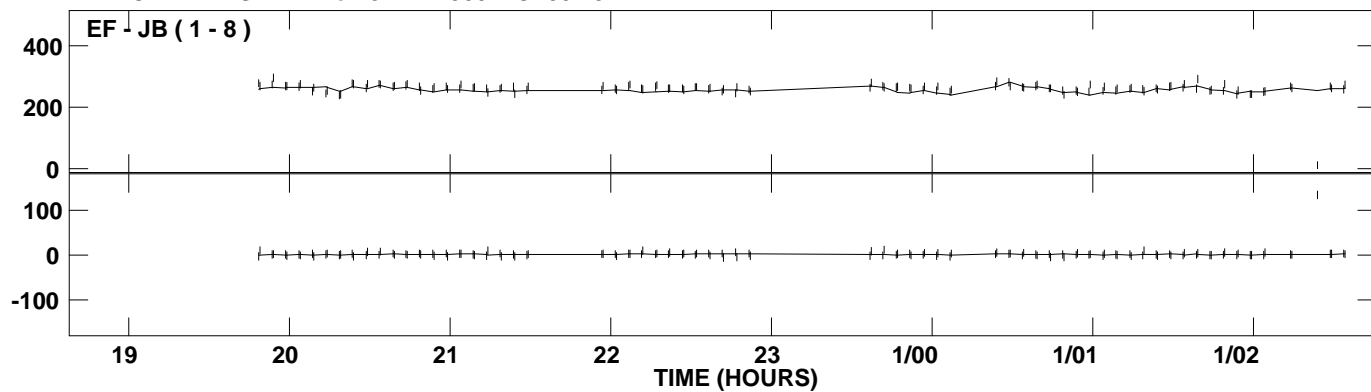


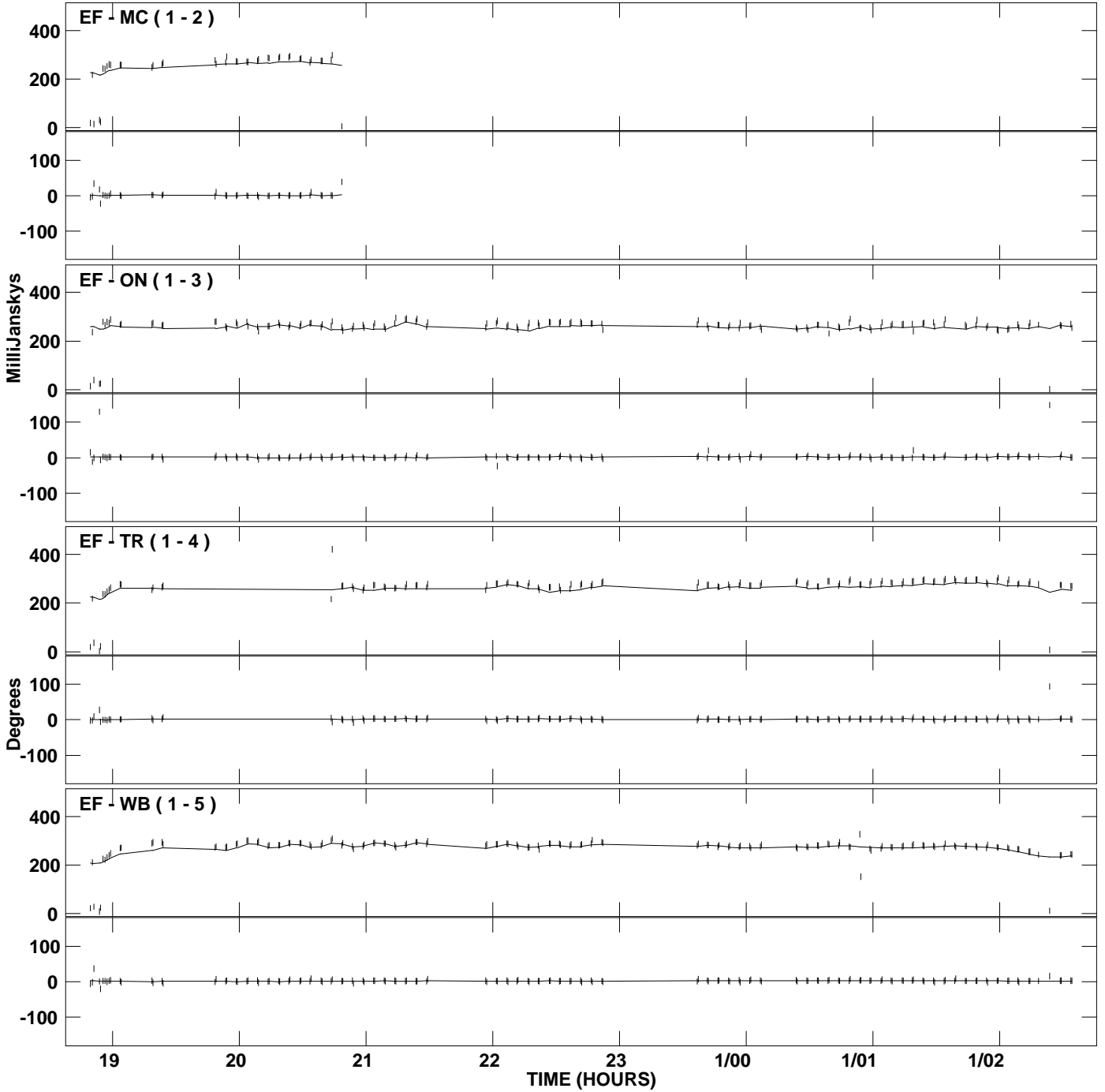
PLot file version 1 created 26-MAR-2009 12:16:53
Amplitude and Phase vs Time for J1217+3007.MULTI.1 Vect aver. CL # 3
IF 1 CHAN 1 STK LL of J1217+3007.ICL001.3



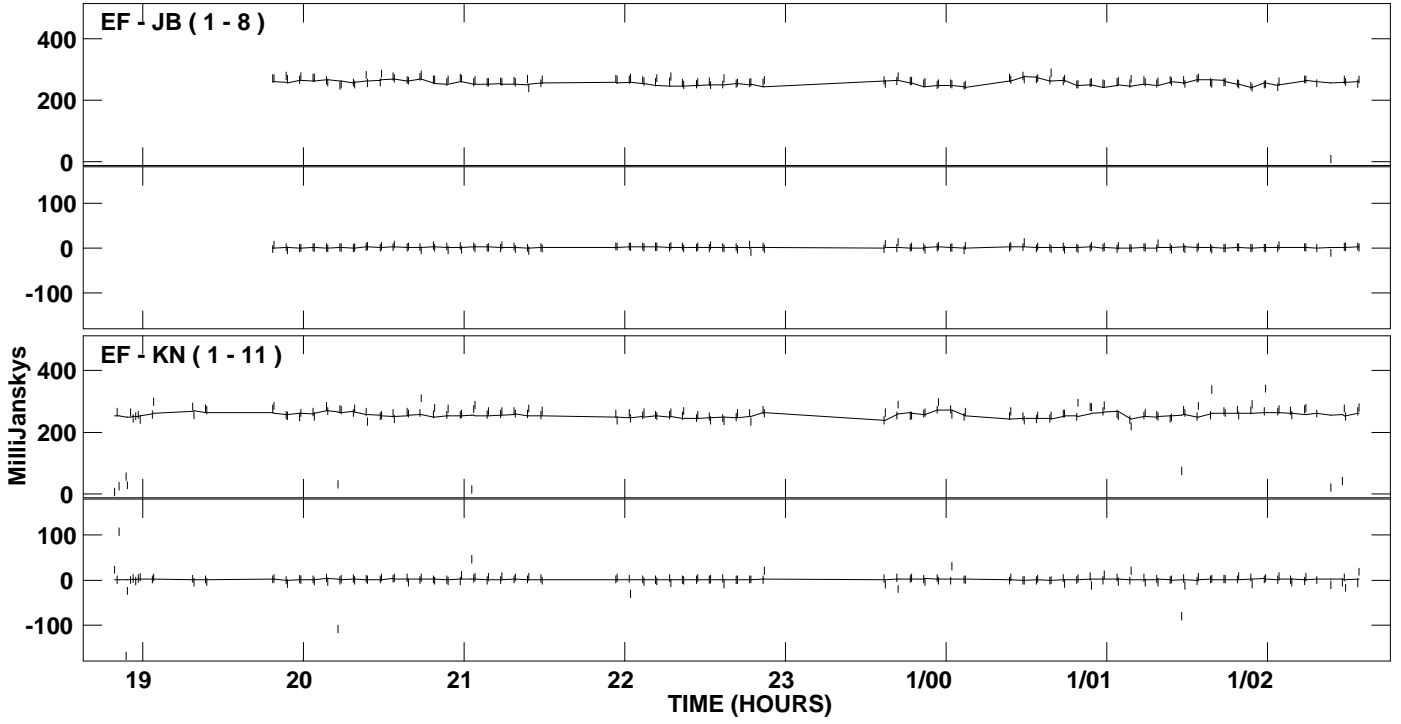
PLot file version 2 created 26-MAR-2009 12:16:53
Amplitude andPhase vs Time for J1217+3007.MULTI.1 Vect aver. CL # 3
IF 1 CHAN 1 STK LL of J1217+3007.ICL001.3



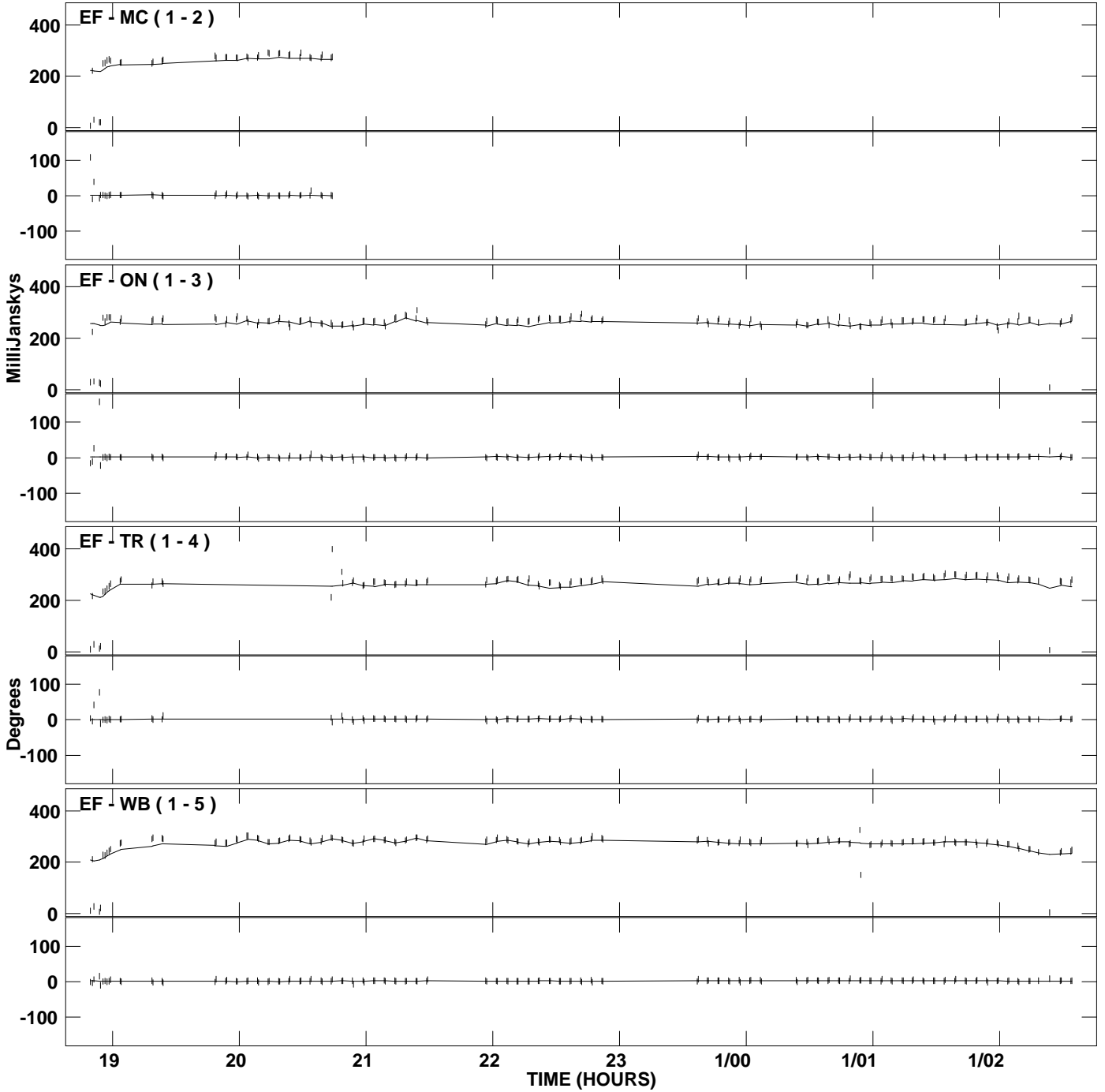
PLot file version 3 created 26-MAR-2009 12:17:03
Amplitude and Phase vs Time for J1217+3007.MULTI.1 Vect aver. CL # 3
IF 2 CHAN 1 STK LL of J1217+3007.ICL001.3



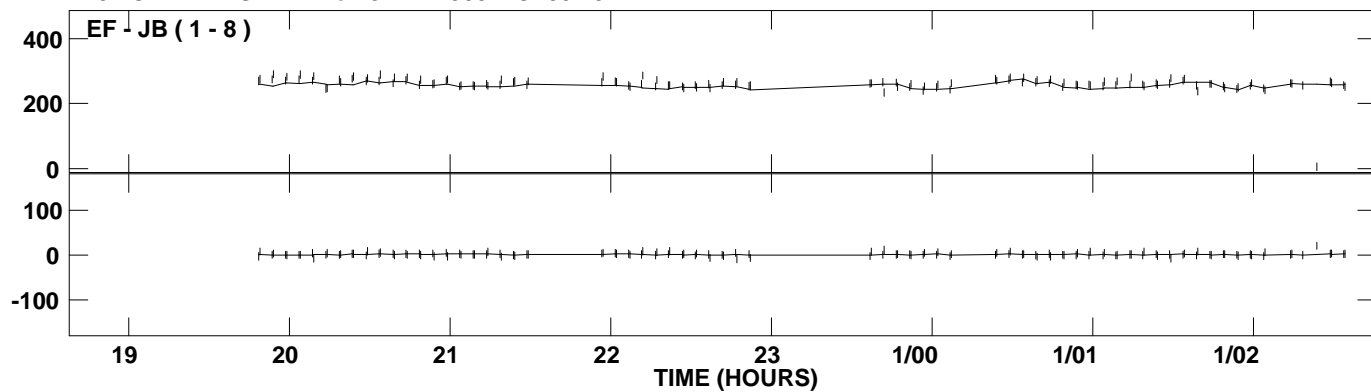
PLot file version 4 created 26-MAR-2009 12:17:03
Amplitude andPhase vs Time for J1217+3007.MULTI.1 Vect aver. CL # 3
IF 2 CHAN 1 STK LL of J1217+3007.ICL001.3



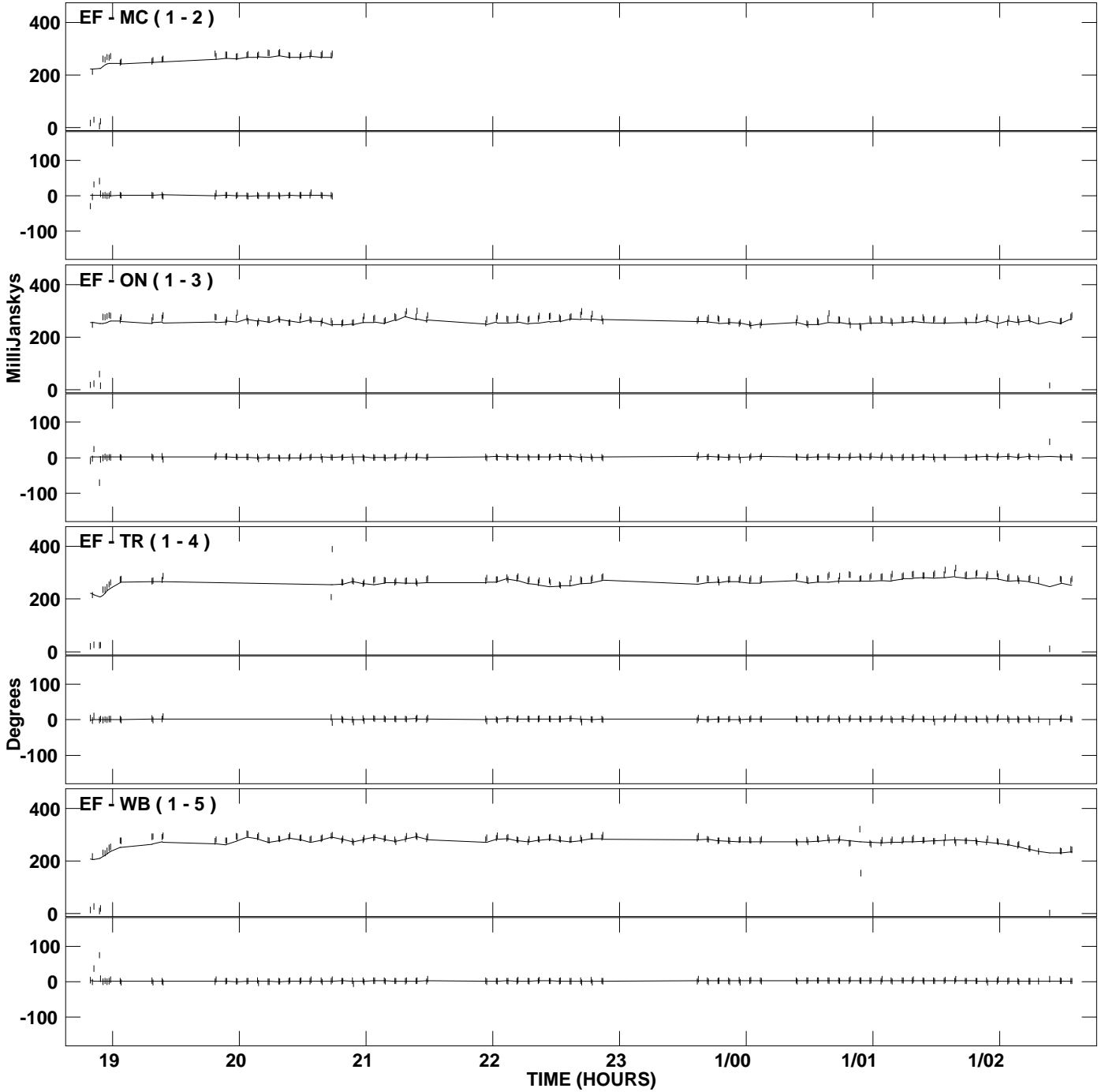
PLot file version 5 created 26-MAR-2009 12:17:08
Amplitude and Phase vs Time for J1217+3007.MULTI.1 Vect aver. CL # 3
IF 3 CHAN 1 STK LL of J1217+3007.ICL001.3



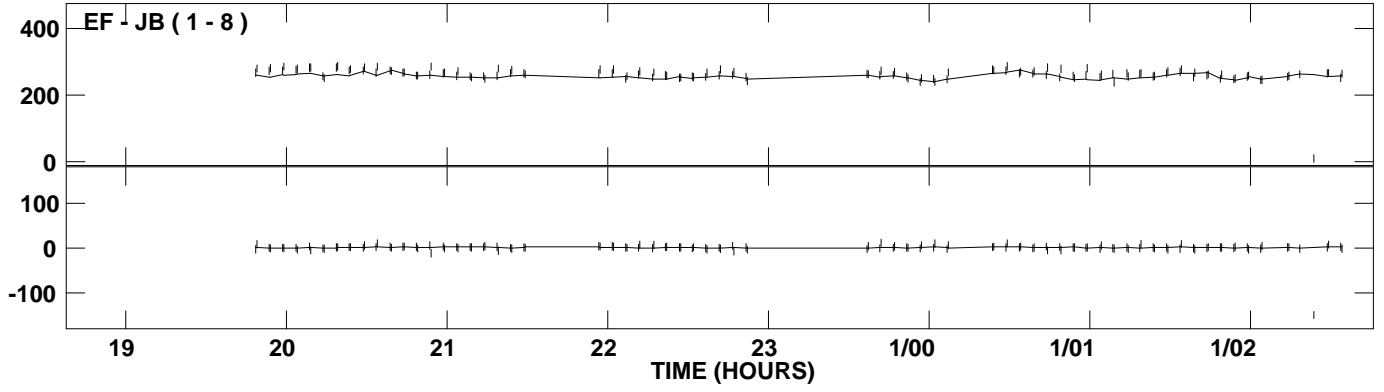
PLot file version 6 created 26-MAR-2009 12:17:08
Amplitude andPhase vs Time for J1217+3007.MULTI.1 Vect aver. CL # 3
IF 3 CHAN 1 STK LL of J1217+3007.ICL001.3



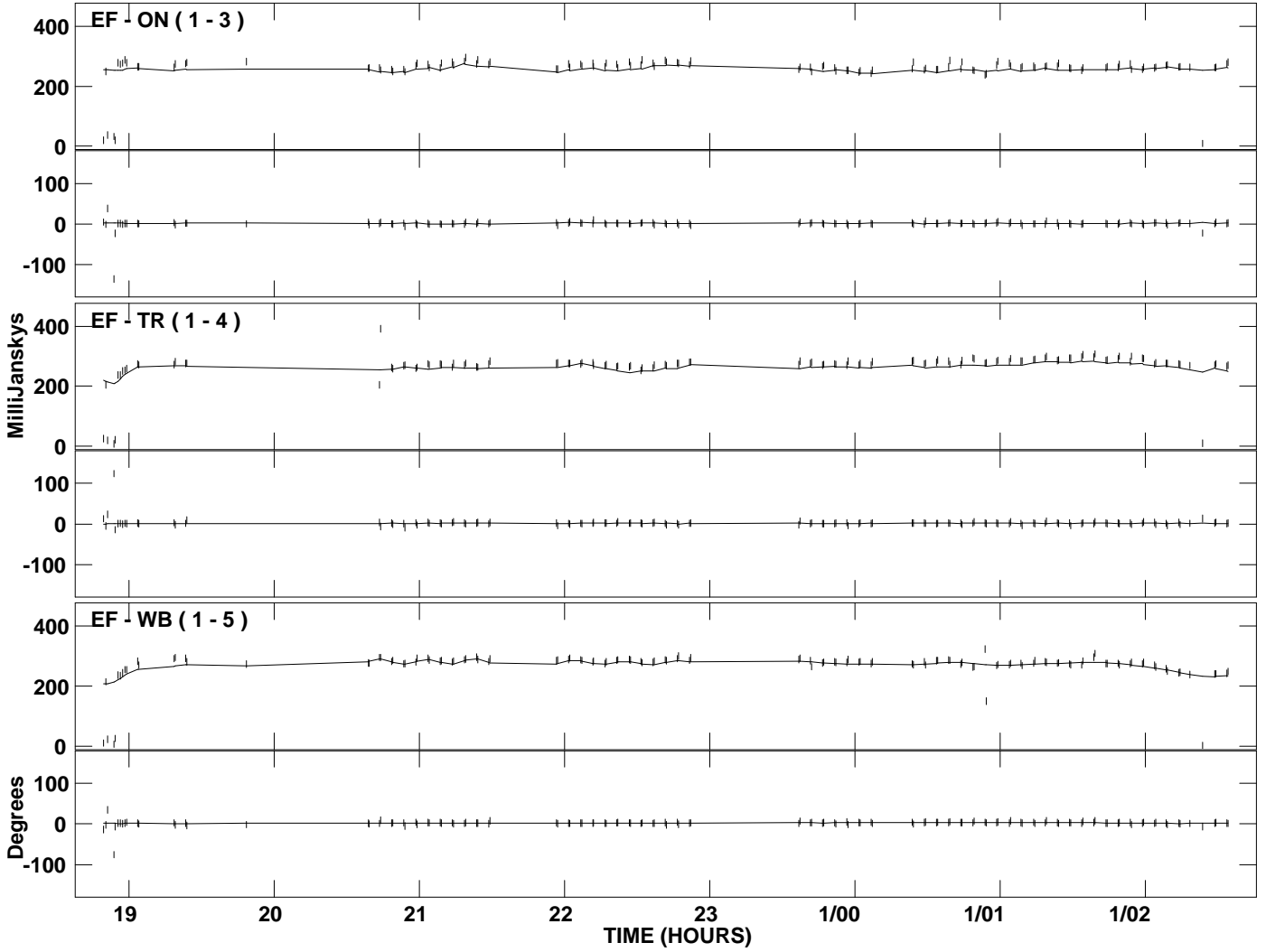
PLot file version 7 created 26-MAR-2009 12:17:13
Amplitude and Phase vs Time for J1217+3007.MULTI.1 Vect aver. CL # 3
IF 4 CHAN 1 STK LL of J1217+3007.ICL001.3



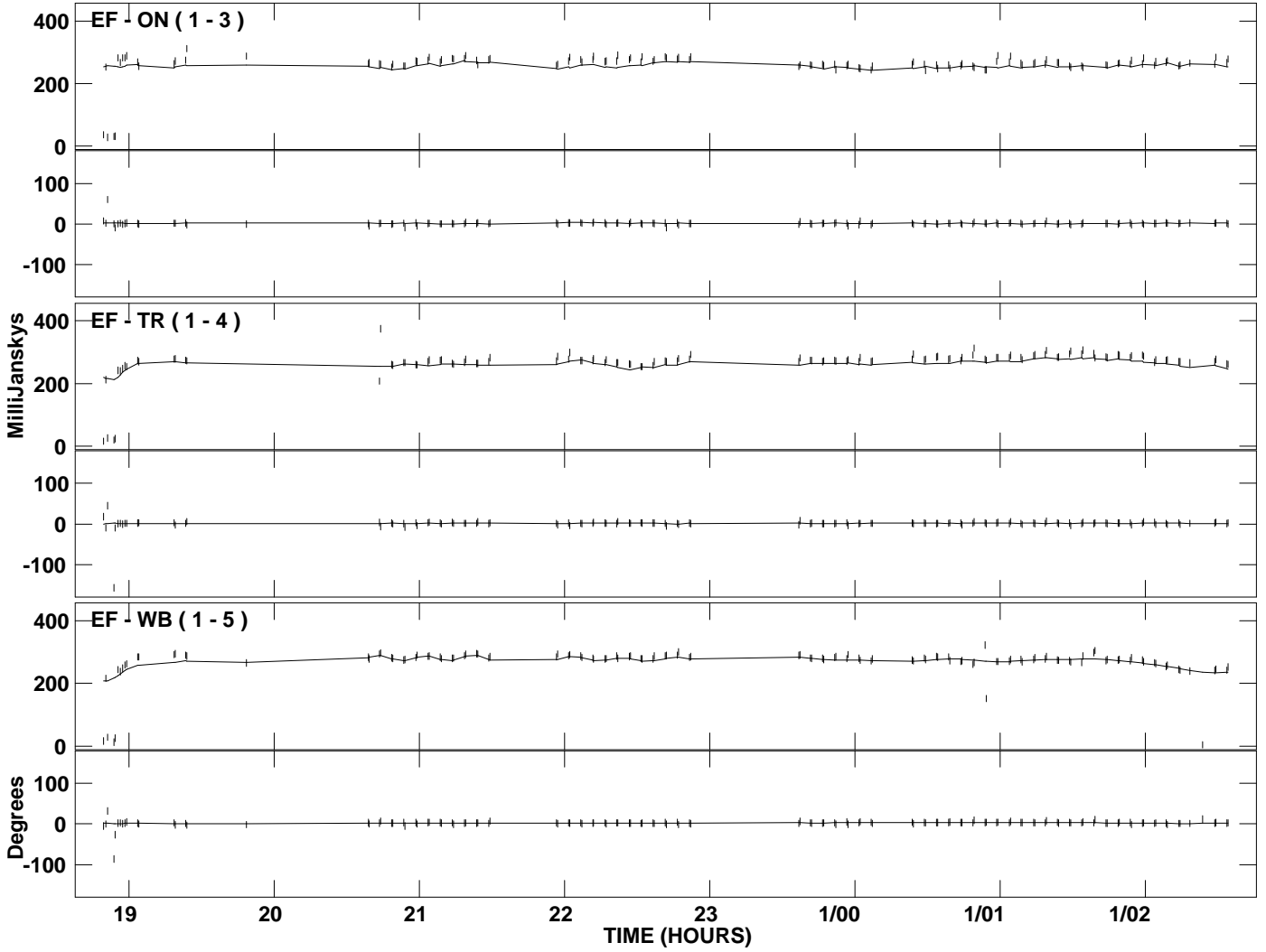
PLot file version 8 created 26-MAR-2009 12:17:13
Amplitude andPhase vs Time for J1217+3007.MULTI.1 Vect aver. CL # 3
IF 4 CHAN 1 STK LL of J1217+3007.ICL001.3



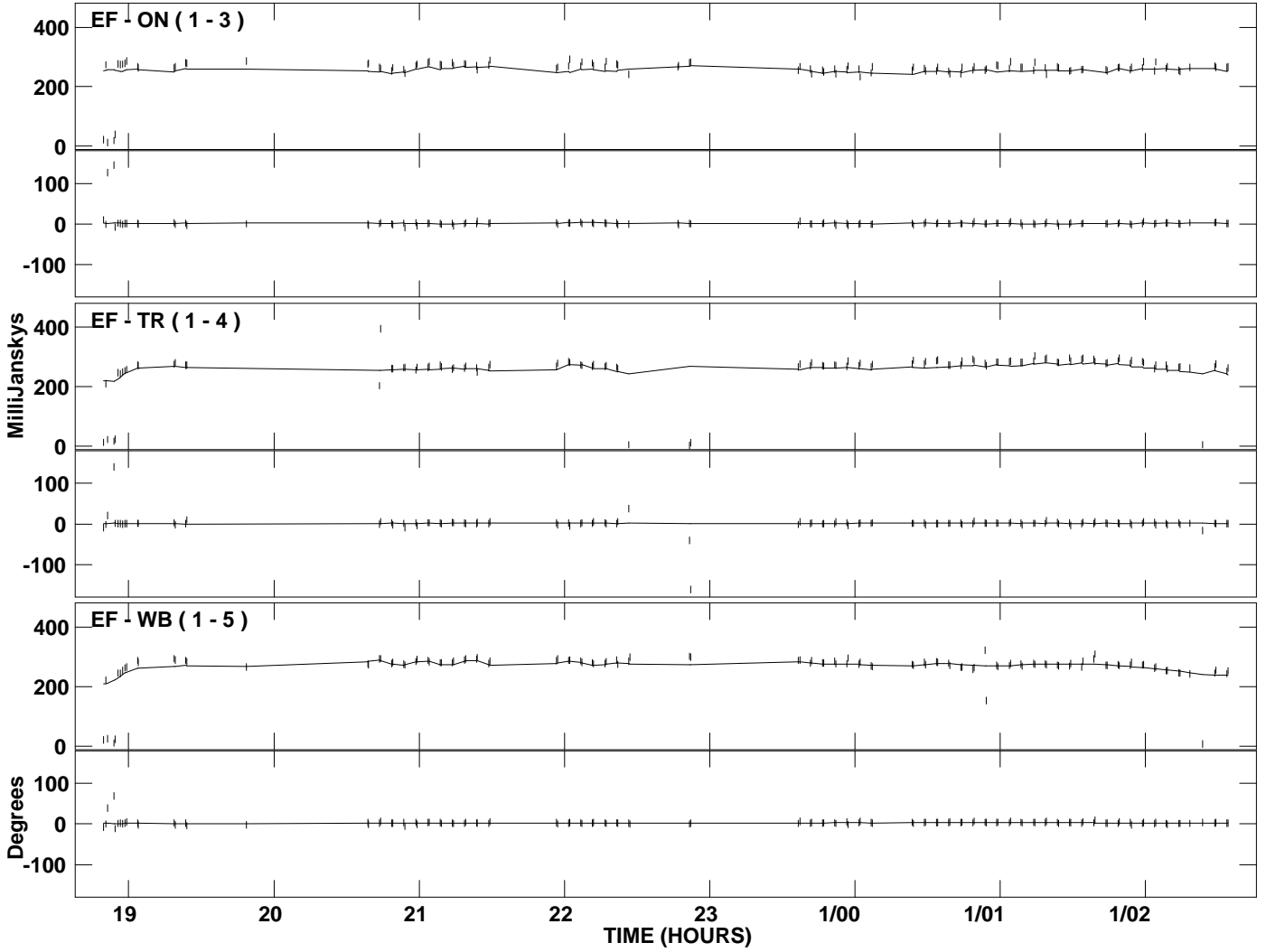
PLot file version 9 created 26-MAR-2009 12:17:18
Amplitude and Phase vs Time for J1217+3007.MULTI.1 Vect aver. CL # 3
IF 5 CHAN 1 STK LL of J1217+3007.ICL001.3



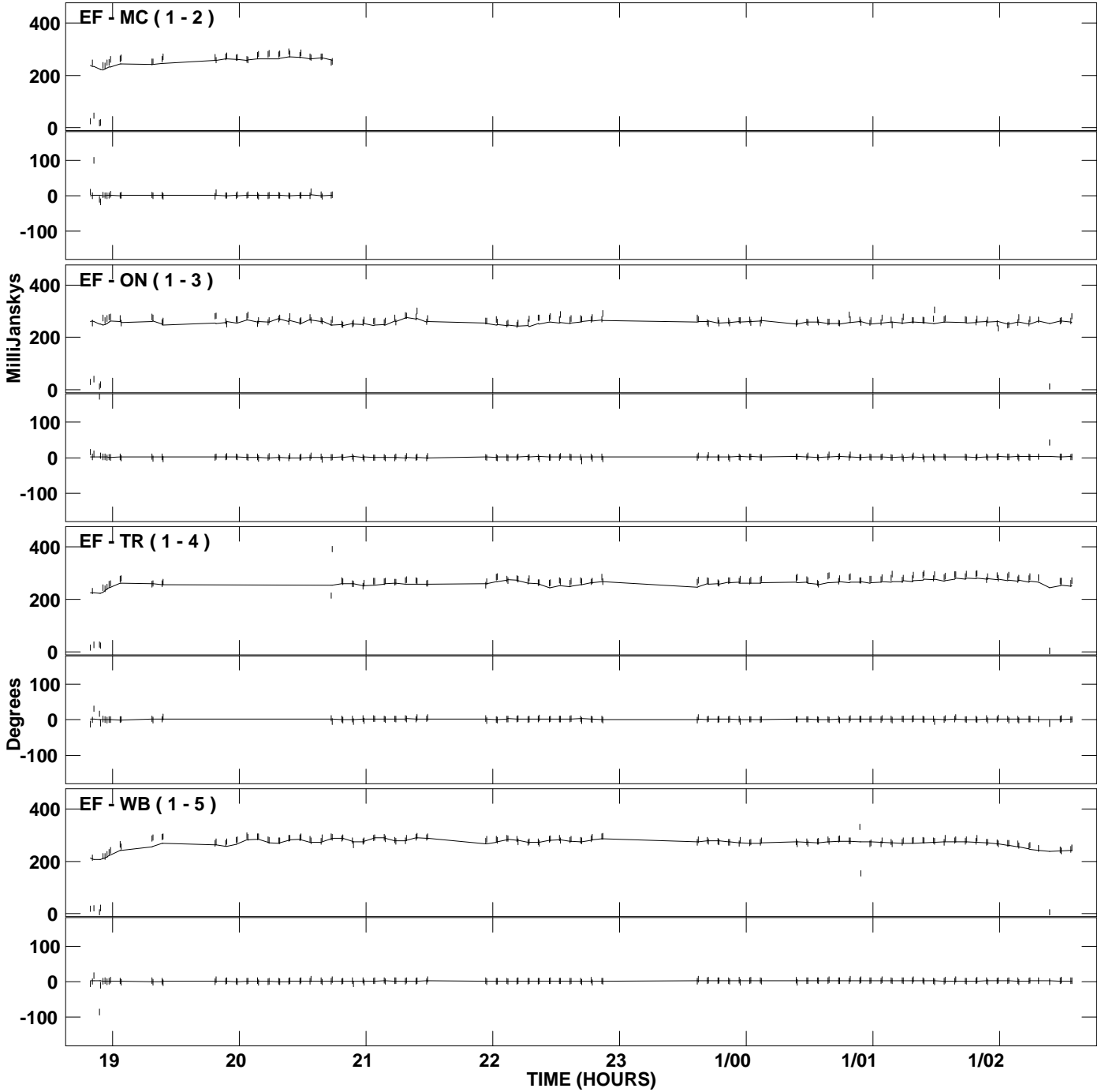
PLot file version 10 created 26-MAR-2009 12:17:23
Amplitude and Phase vs Time for J1217+3007.MULTI.1 Vect aver. CL # 3
IF 6 CHAN 1 STK LL of J1217+3007.ICL001.3



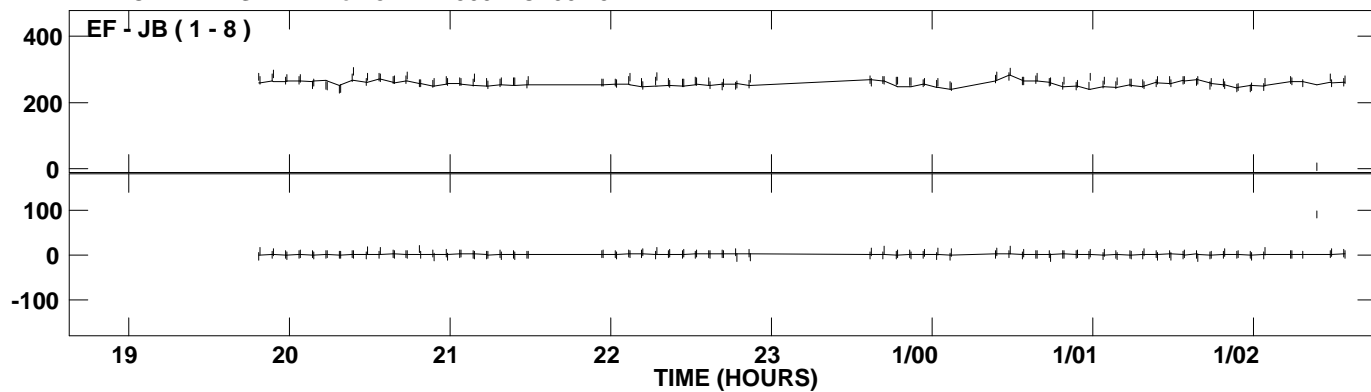
PLot file version 11 created 26-MAR-2009 12:17:29
Amplitude and Phase vs Time for J1217+3007.MULTI.1 Vect aver. CL # 3
IF 7 CHAN 1 STK LL of J1217+3007.ICL001.3



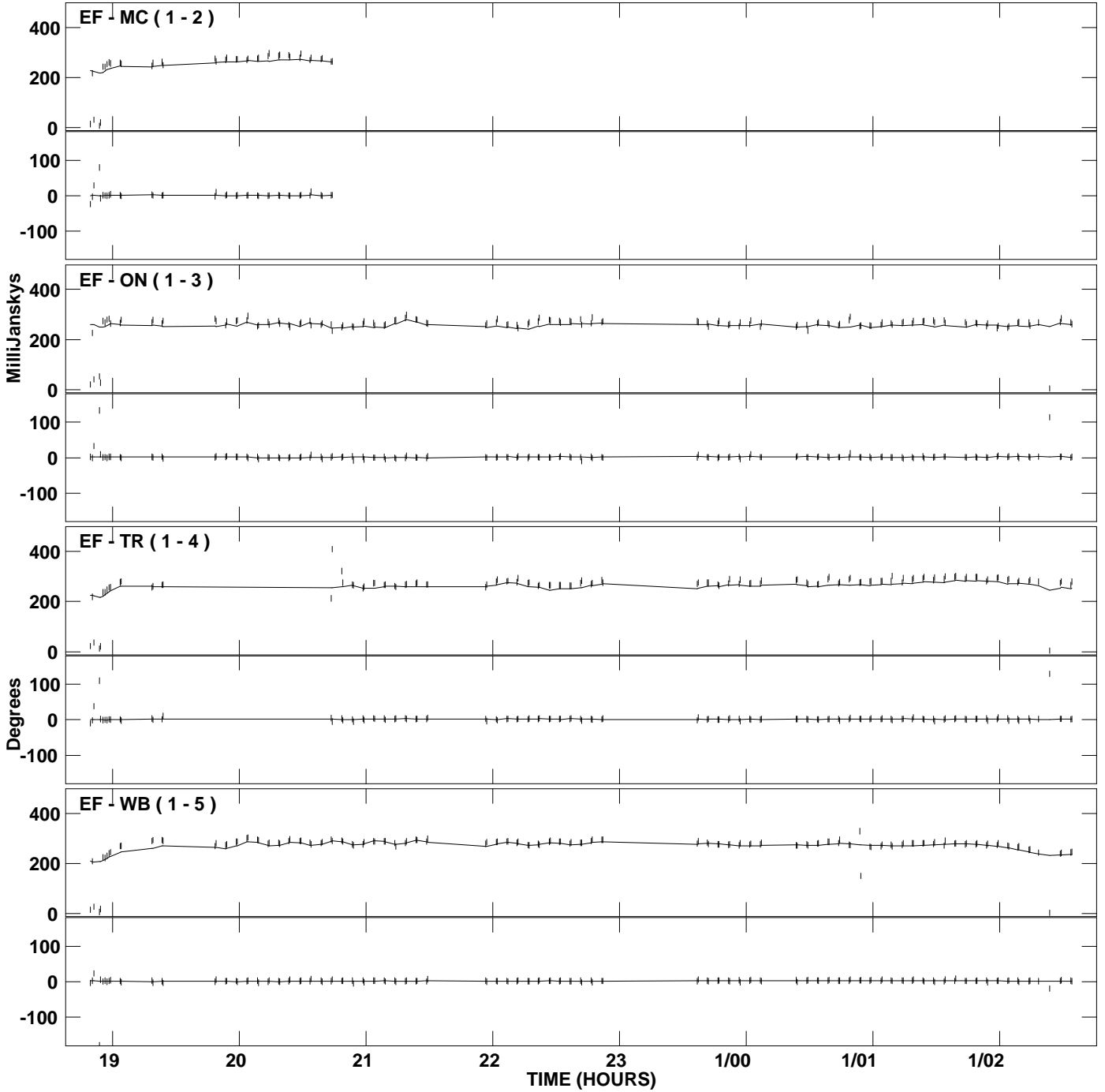
PLot file version 12 created 26-MAR-2009 12:17:39
Amplitude andPhase vs Time for J1217+3007.MULTI.1 Vect aver. CL # 3
IF 1 CHAN 1 STK RR of J1217+3007.ICL001.3



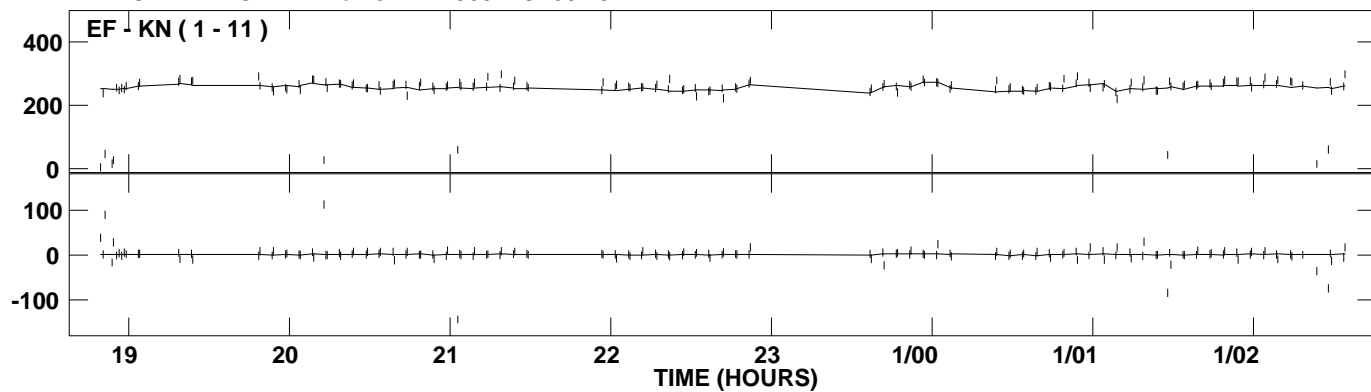
PLot file version 13 created 26-MAR-2009 12:17:39
Amplitude andPhase vs Time for J1217+3007.MULTI.1 Vect aver. CL # 3
IF 1 CHAN 1 STK RR of J1217+3007.ICL001.3



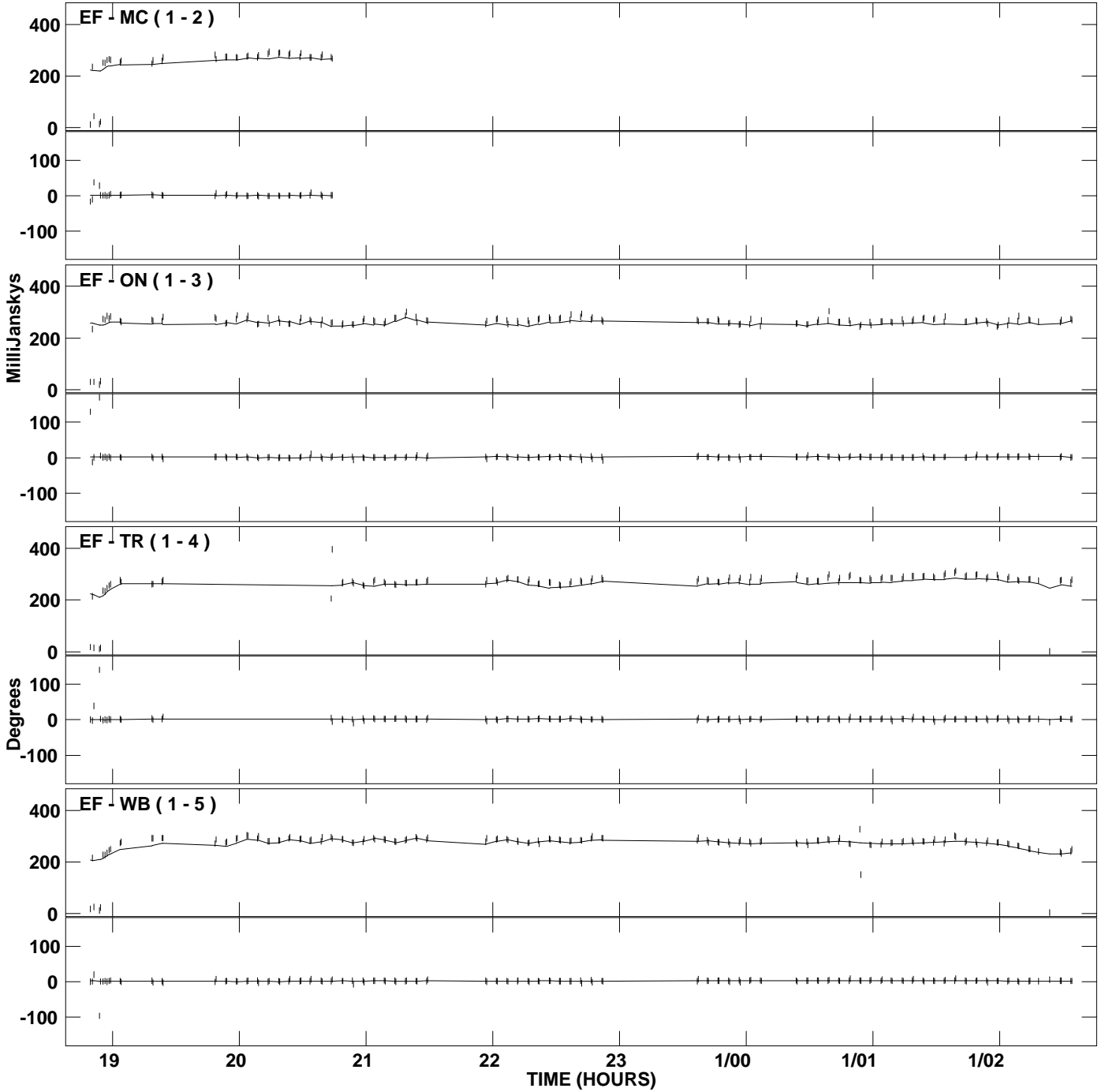
PLot file version 14 created 26-MAR-2009 12:17:44
Amplitude and Phase vs Time for J1217+3007.MULTI.1 Vect aver. CL # 3
IF 2 CHAN 1 STK RR of J1217+3007.ICL001.3



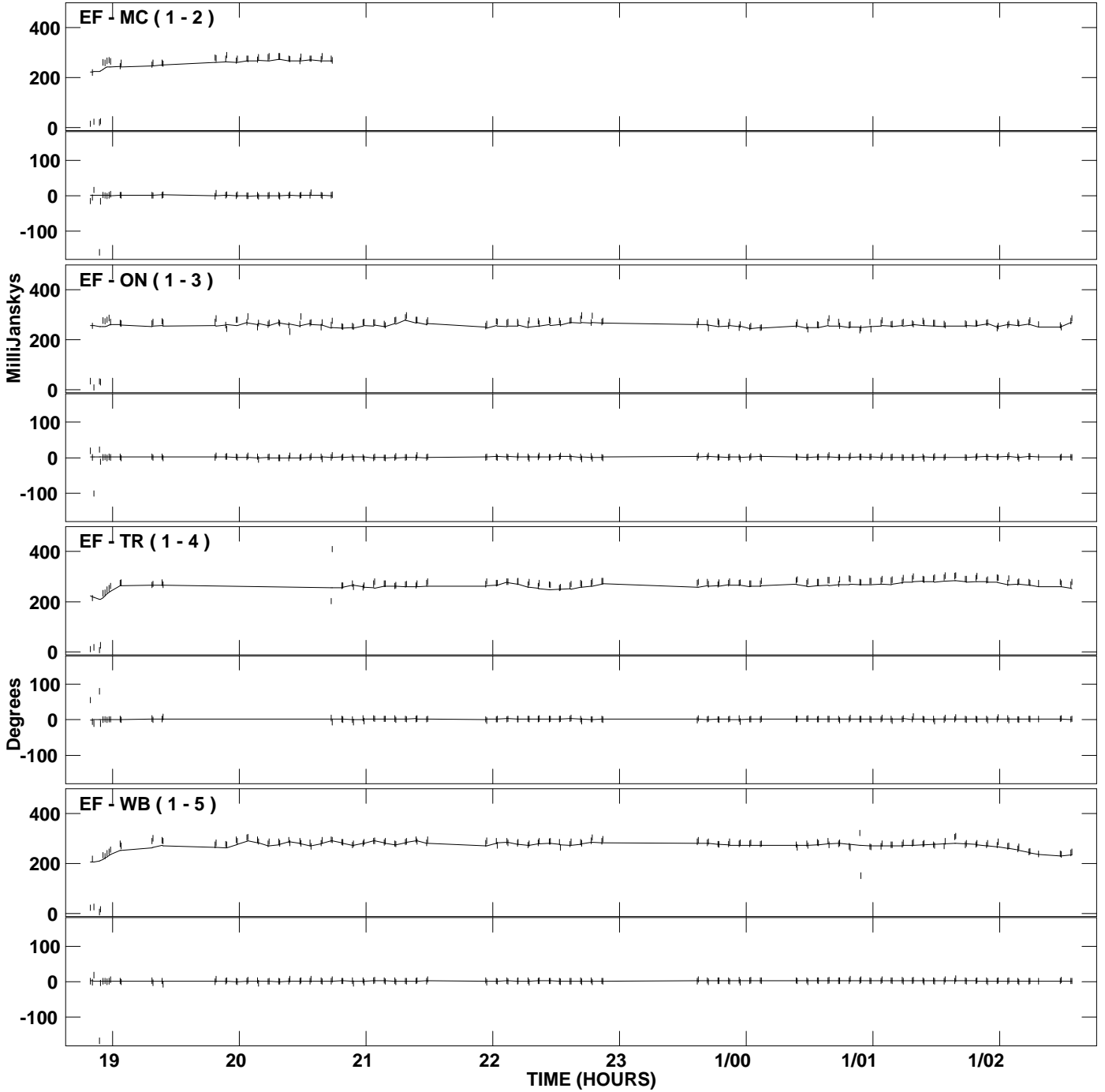
PLot file version 15 created 26-MAR-2009 12:17:44
Amplitude andPhase vs Time for J1217+3007.MULTI.1 Vect aver. CL # 3
IF 2 CHAN 1 STK RR of J1217+3007.ICL001.3



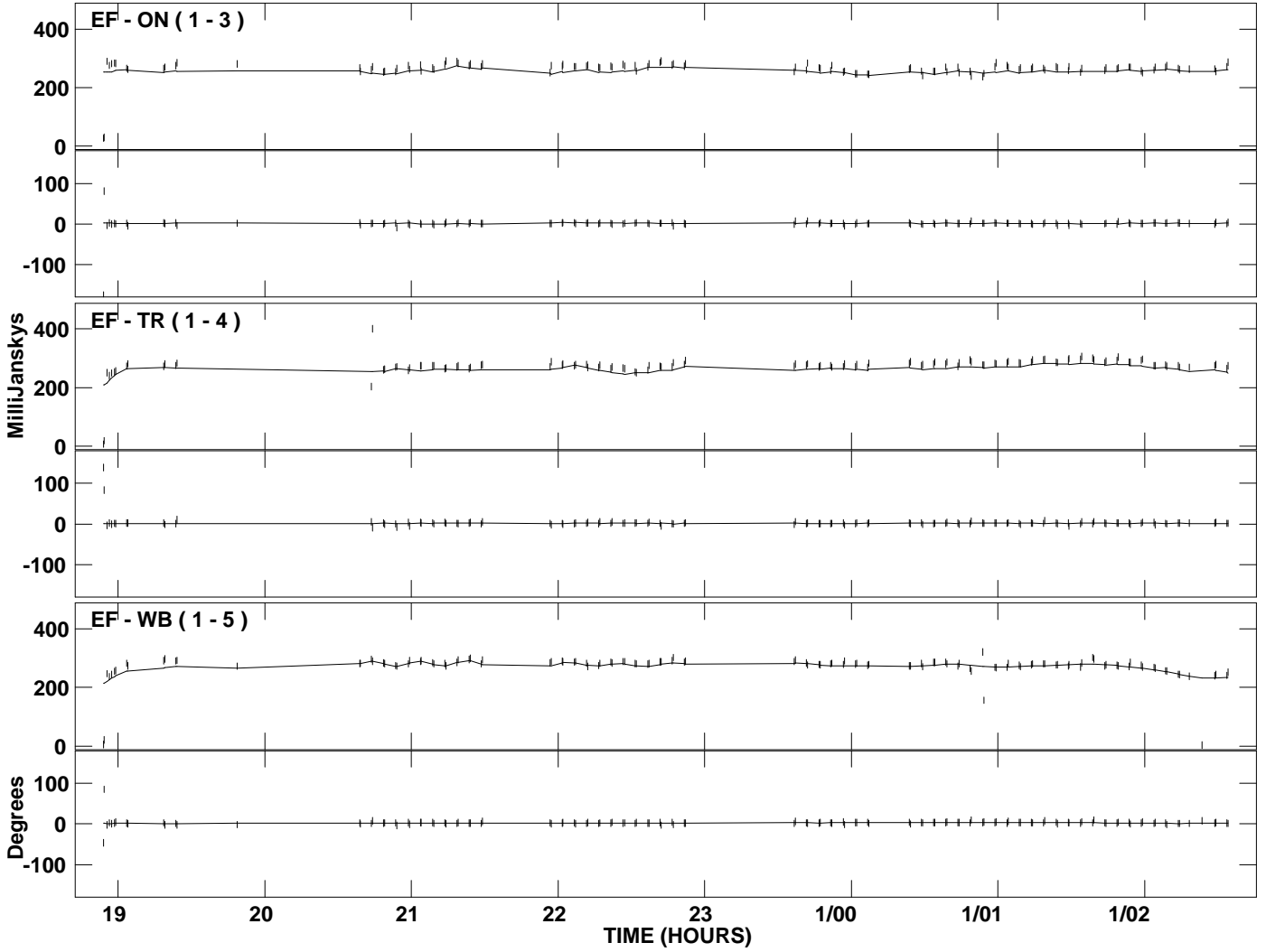
PLot file version 16 created 26-MAR-2009 12:17:50
Amplitude andPhase vs Time for J1217+3007.MULTI.1 Vect aver. CL # 3
IF 3 CHAN 1 STK RR of J1217+3007.ICL001.3



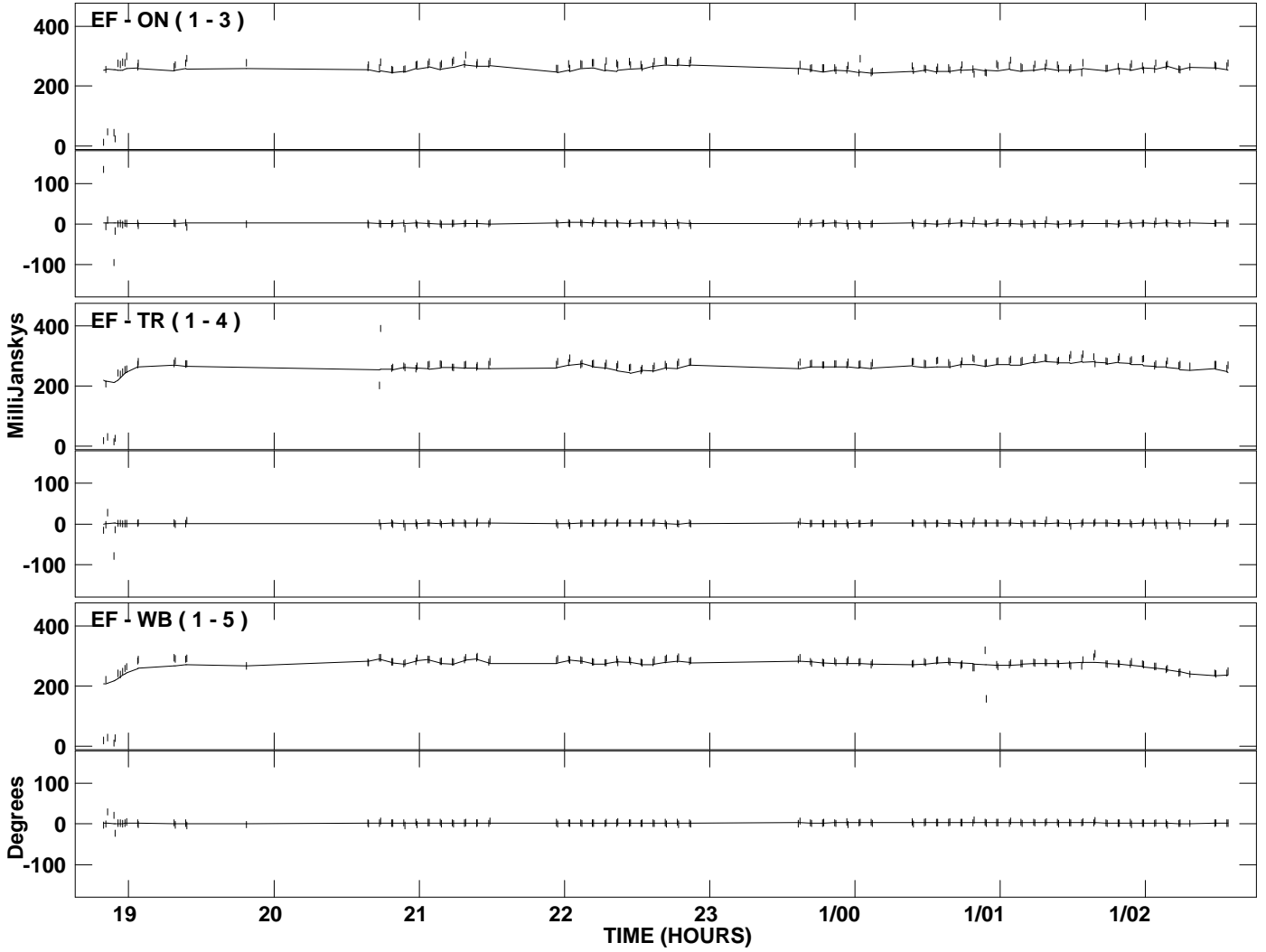
PLot file version 17 created 26-MAR-2009 12:17:55
Amplitude and Phase vs Time for J1217+3007.MULTI.1 Vect aver. CL # 3
IF 4 CHAN 1 STK RR of J1217+3007.ICL001.3



PLot file version 18 created 26-MAR-2009 12:18:00
Amplitude andPhase vs Time for J1217+3007.MULTI.1 Vect aver. CL # 3
IF 5 CHAN 1 STK RR of J1217+3007.ICL001.3



PLot file version 19 created 26-MAR-2009 12:18:05
Amplitude and Phase vs Time for J1217+3007.MULTI.1 Vect aver. CL # 3
IF 6 CHAN 1 STK RR of J1217+3007.ICL001.3



PLot file version 20 created 26-MAR-2009 12:18:10
Amplitude and Phase vs Time for J1217+3007.MULTI.1 Vect aver. CL # 3
IF 7 CHAN 1 STK RR of J1217+3007.ICL001.3

