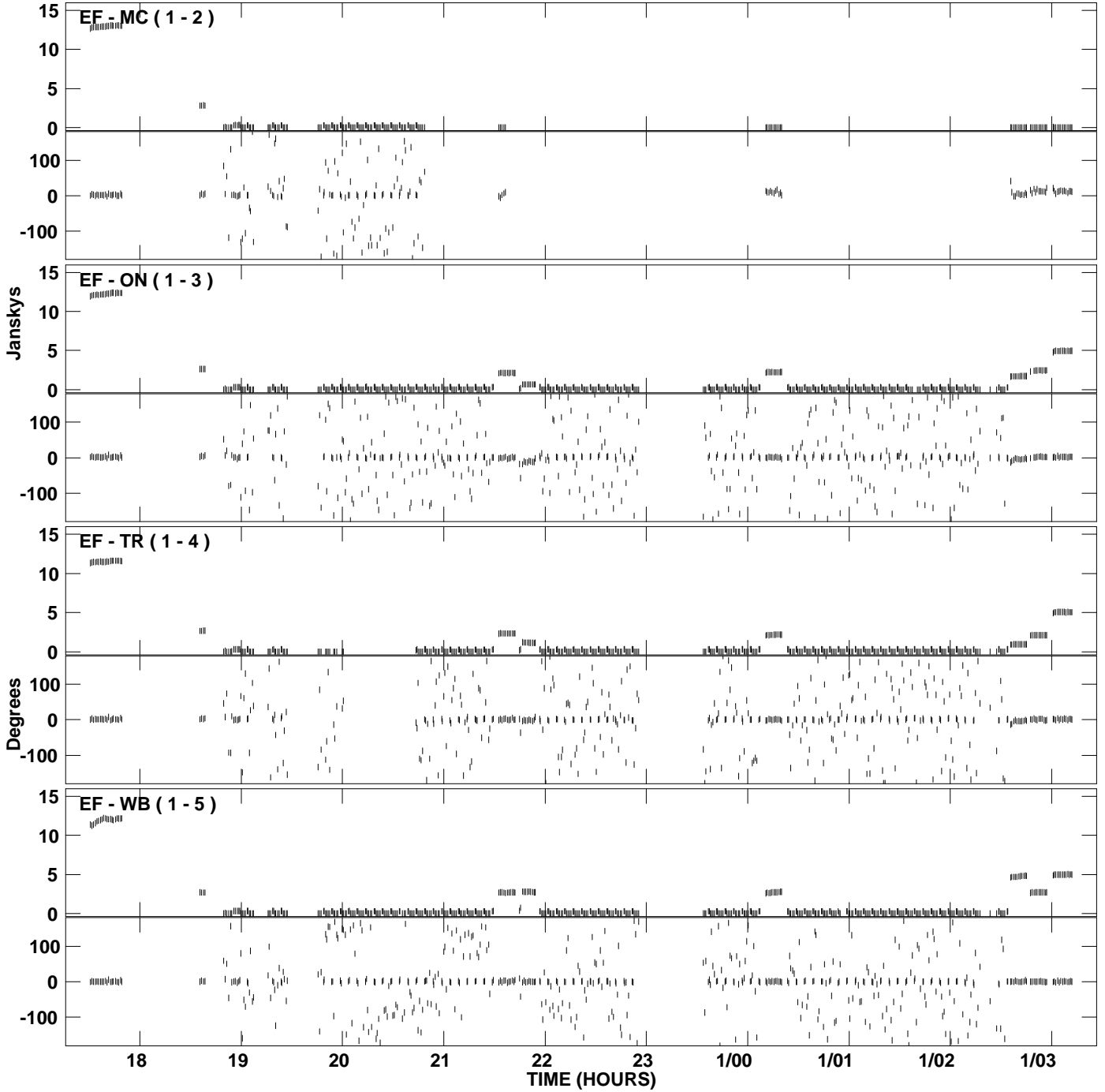
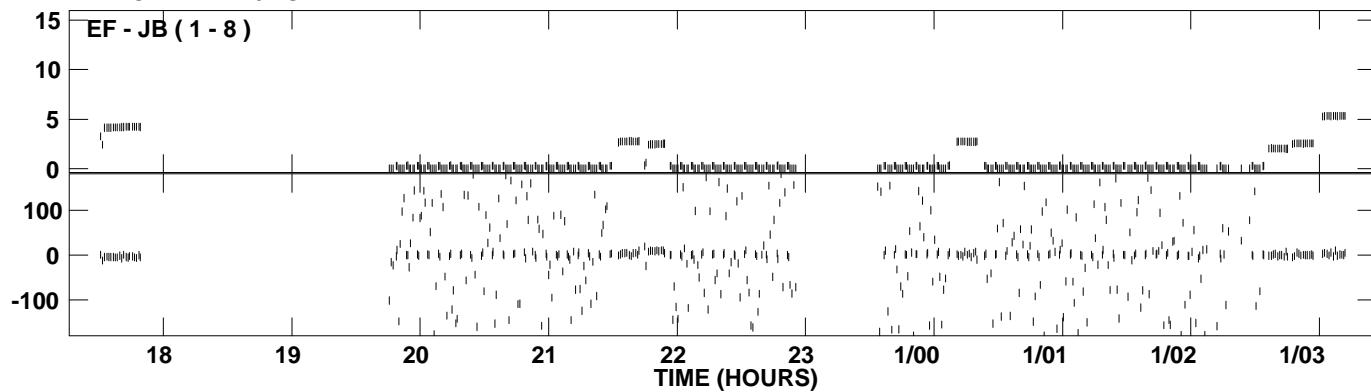


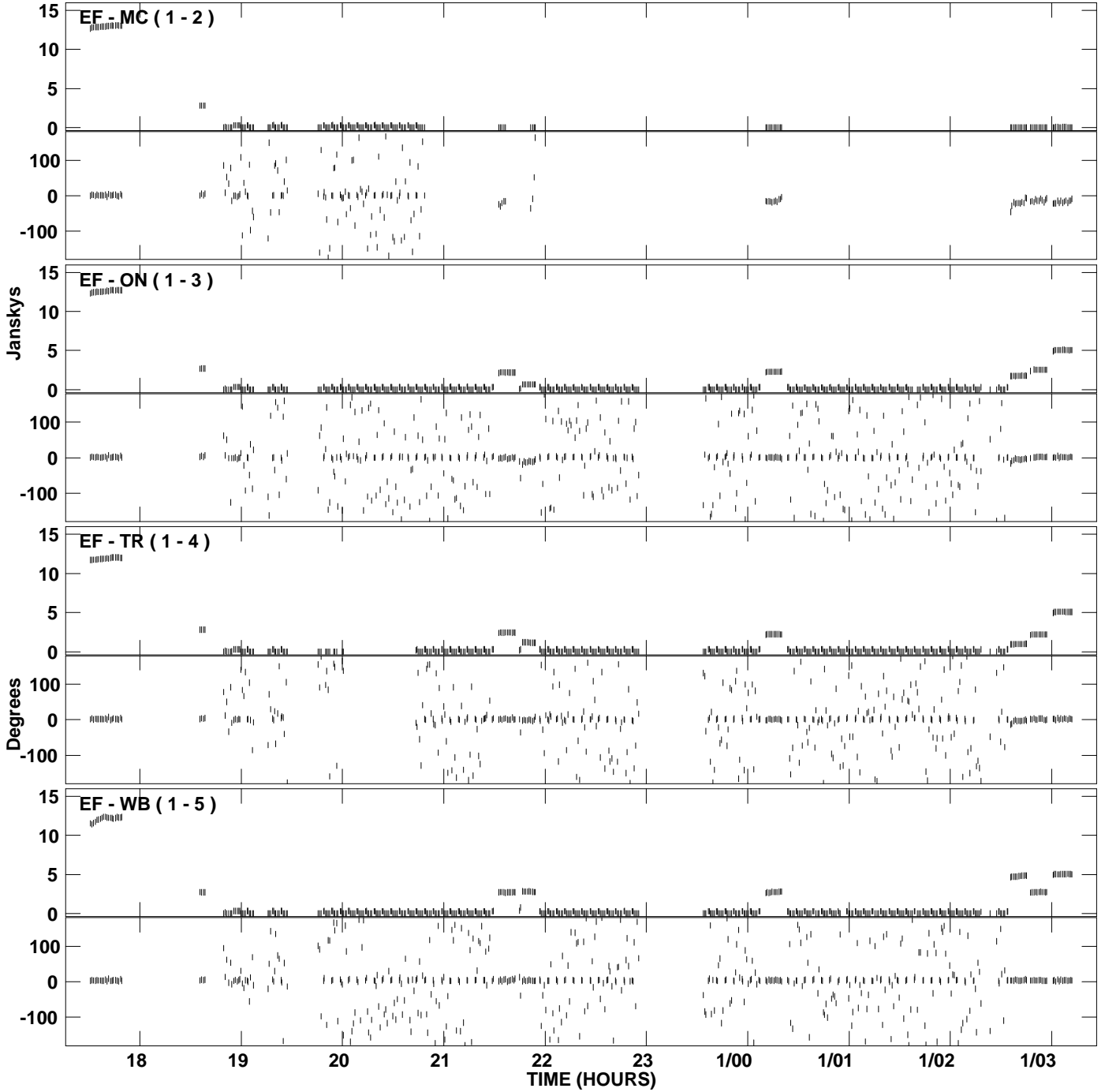
PLot file version 1 created 26-MAR-2009 12:02:19
Amplitude and Phase vs Time for RF006A.UVDATA.1 Vect aver. CL # 3
IF 1 CHAN 1 - 16 STK LL



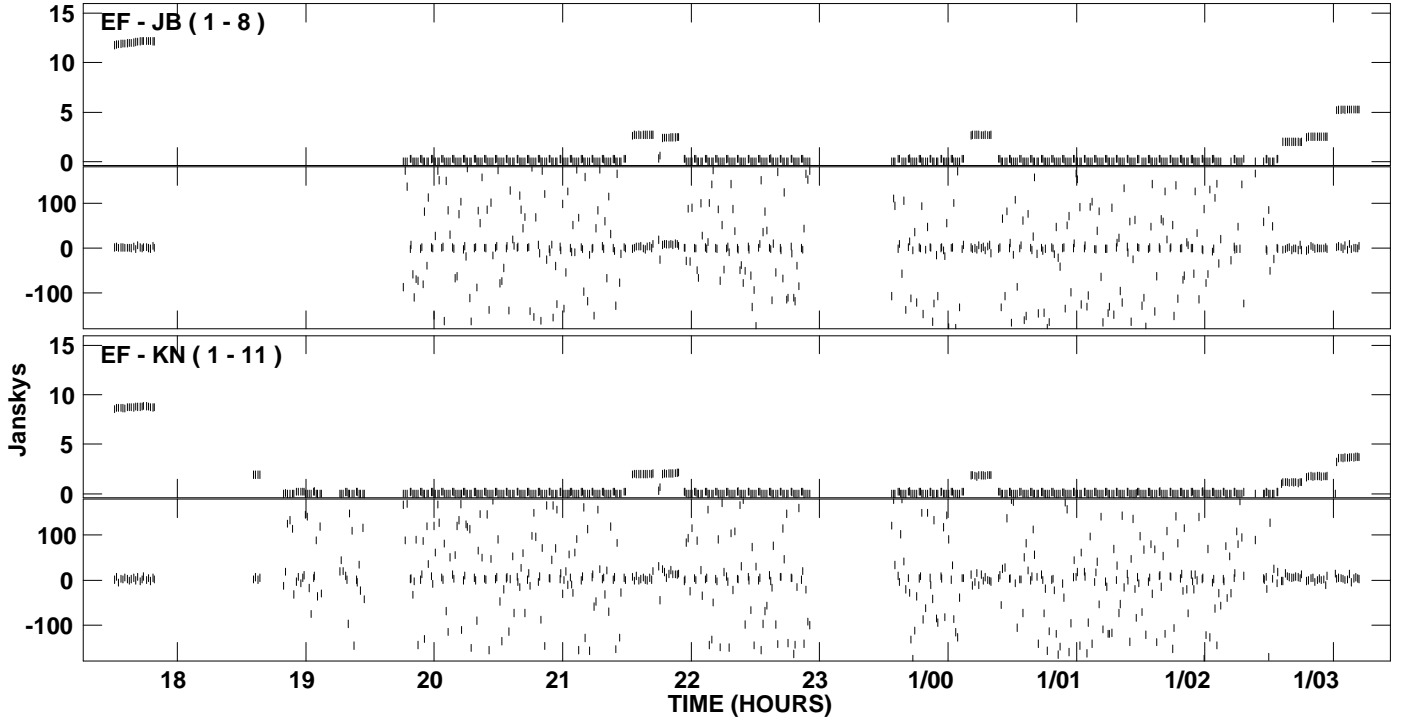
PLot file version 2 created 26-MAR-2009 12:02:19
Amplitude and Phase vs Time for RF006A.UVDATA.1 Vect aver. CL # 3
IF 1 CHAN 1 - 16 STK LL



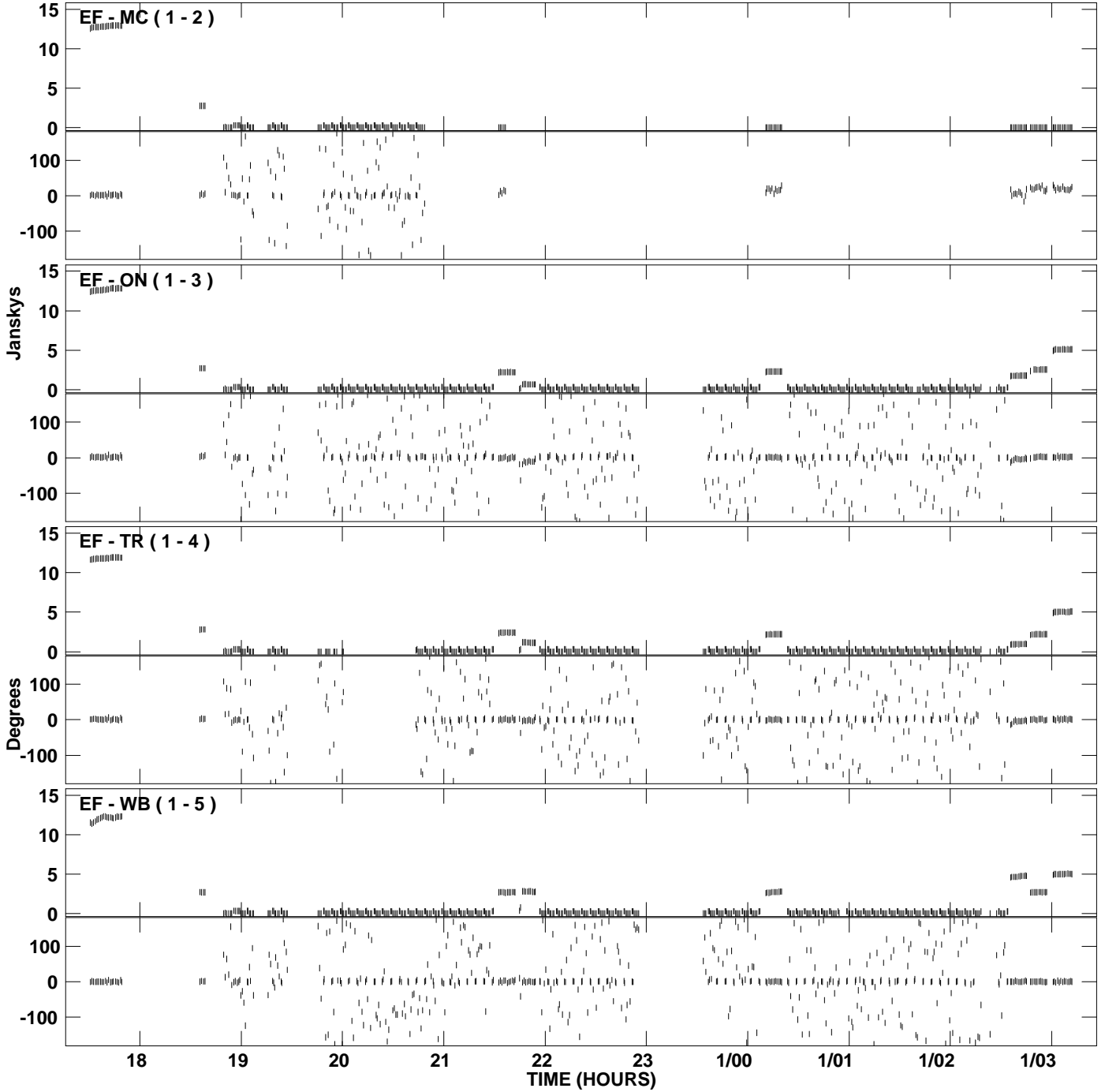
PLot file version 3 created 26-MAR-2009 12:02:26
Amplitude and Phase vs Time for RF006A.UVDATA.1 Vect aver. CL # 3
IF 2 CHAN 1 - 16 STK LL



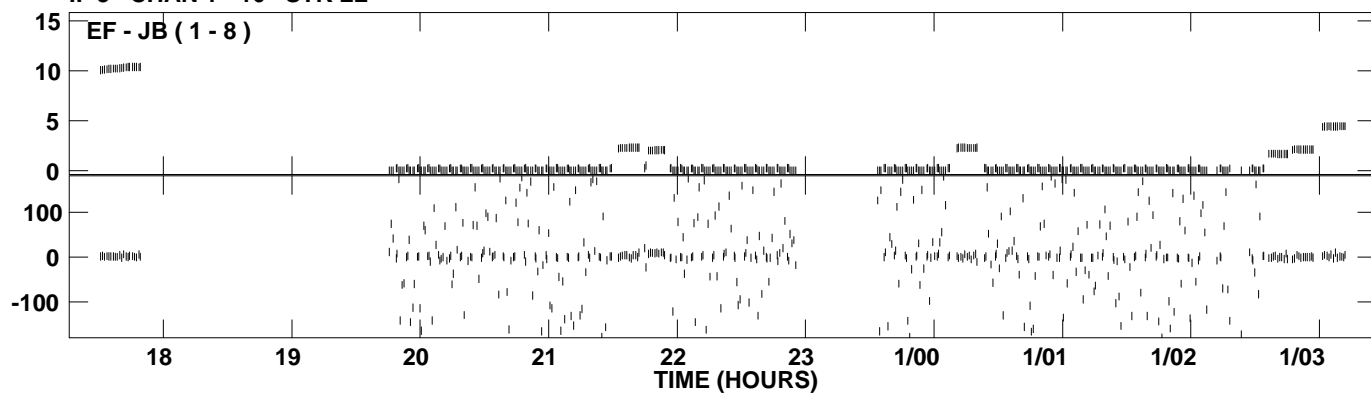
PLot file version 4 created 26-MAR-2009 12:02:26
Amplitude and Phase vs Time for RF006A.UVDATA.1 Vect aver. CL # 3
IF 2 CHAN 1 - 16 STK LL



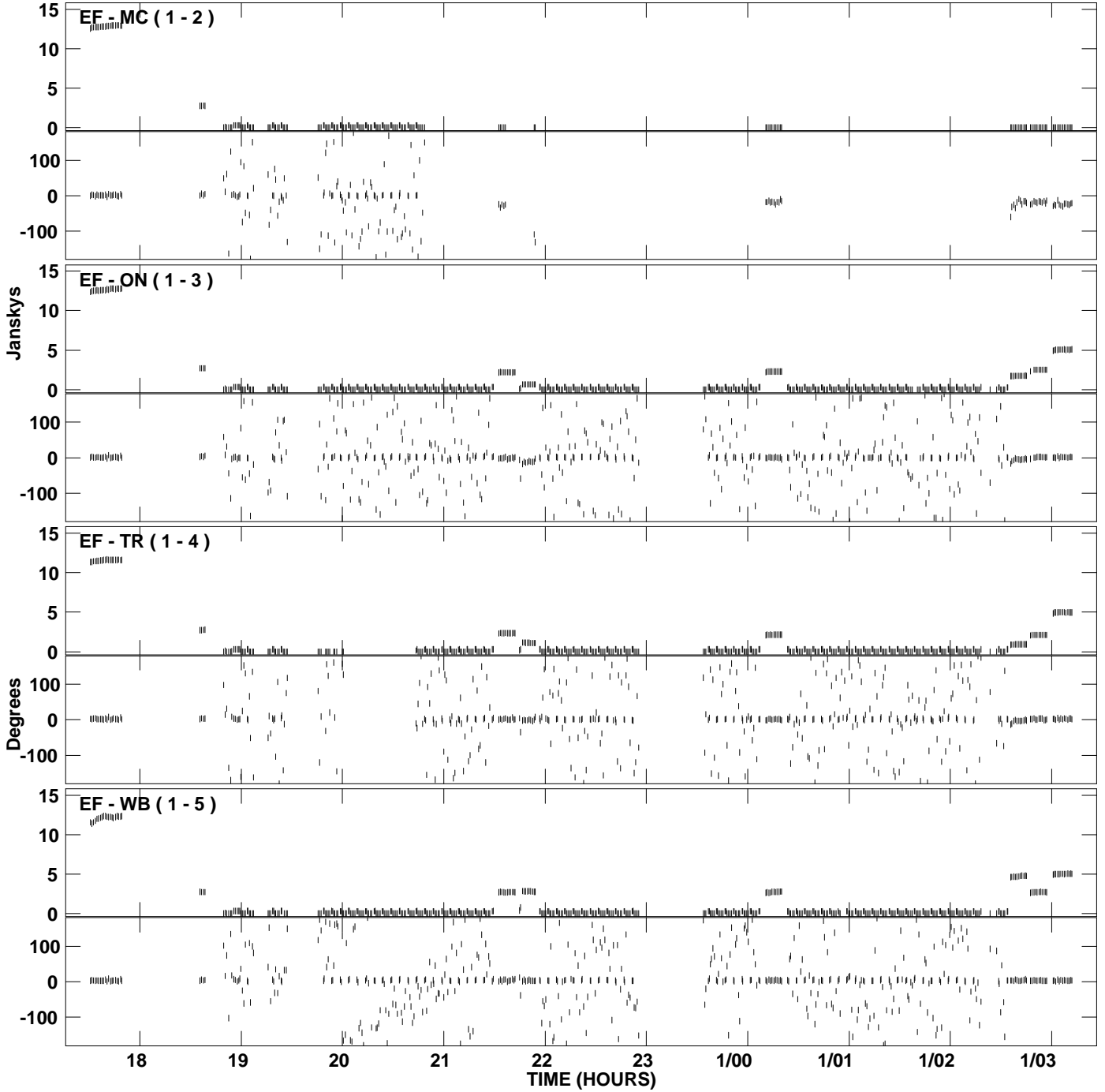
PLot file version 5 created 26-MAR-2009 12:02:33
Amplitude and Phase vs Time for RF006A.UVDATA.1 Vect aver. CL # 3
IF 3 CHAN 1 - 16 STK LL



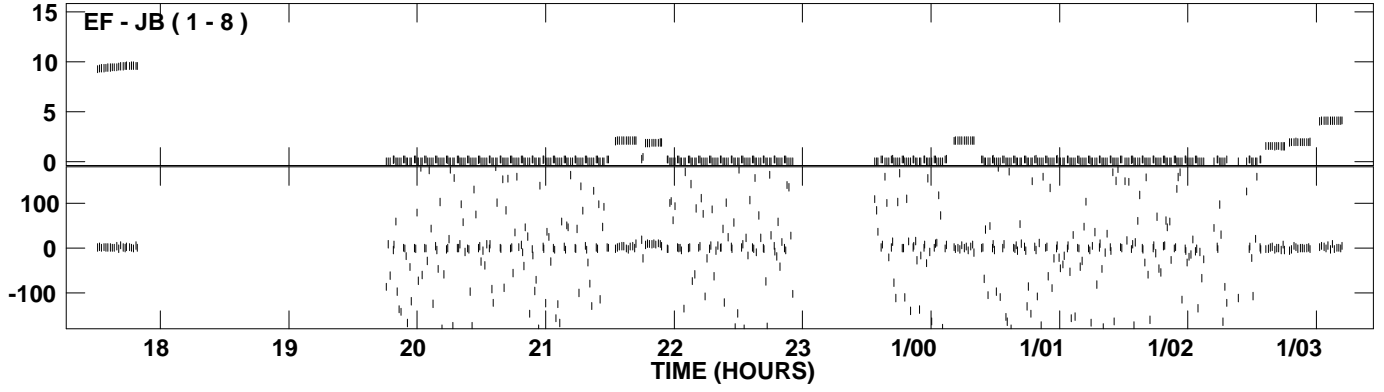
PLot file version 6 created 26-MAR-2009 12:02:33
Amplitude and Phase vs Time for RF006A.UVDATA.1 Vect aver. CL # 3
IF 3 CHAN 1 - 16 STK LL



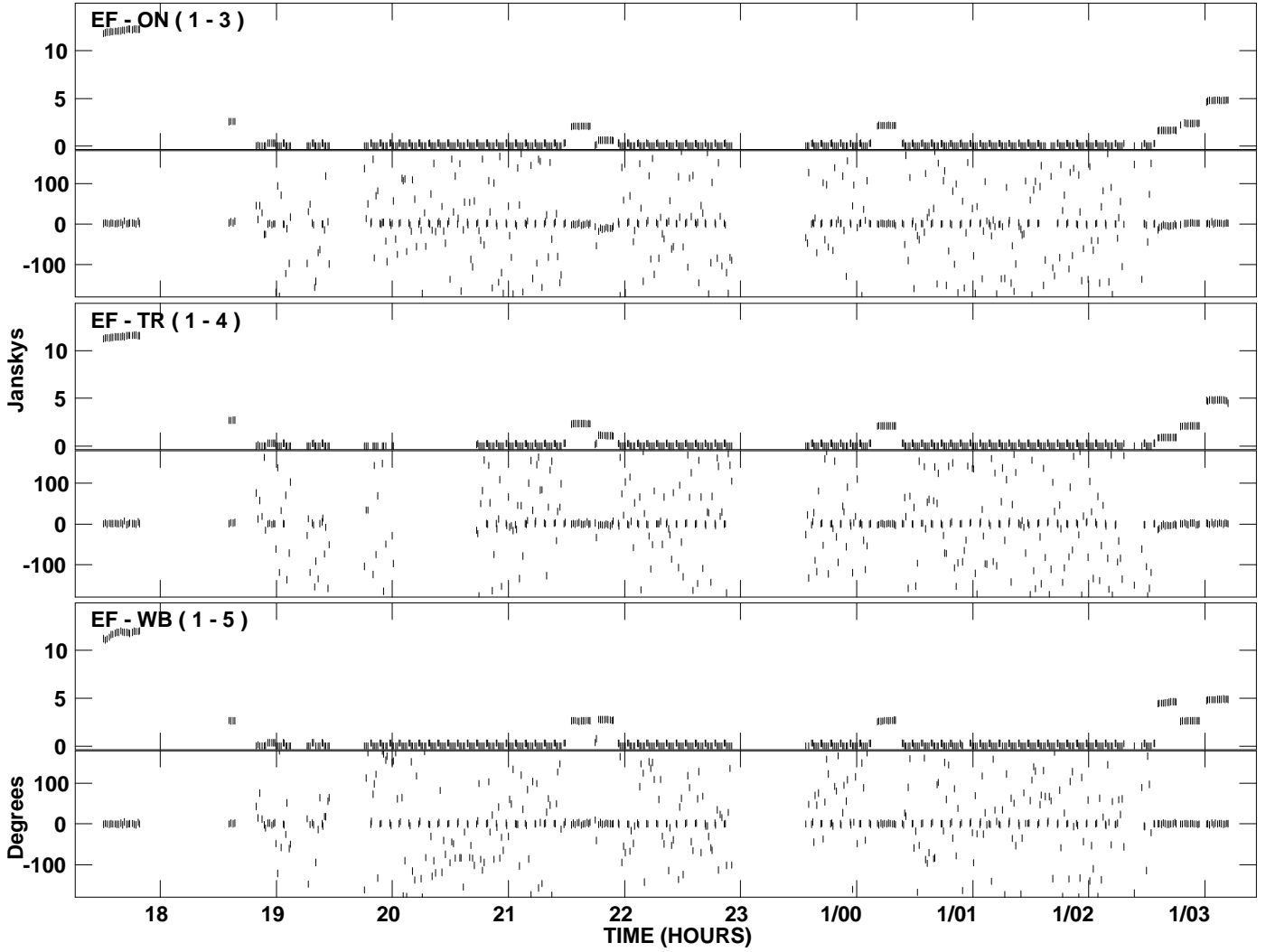
PLot file version 7 created 26-MAR-2009 12:02:40
Amplitude and Phase vs Time for RF006A.UVDATA.1 Vect aver. CL # 3
IF 4 CHAN 1 - 16 STK LL



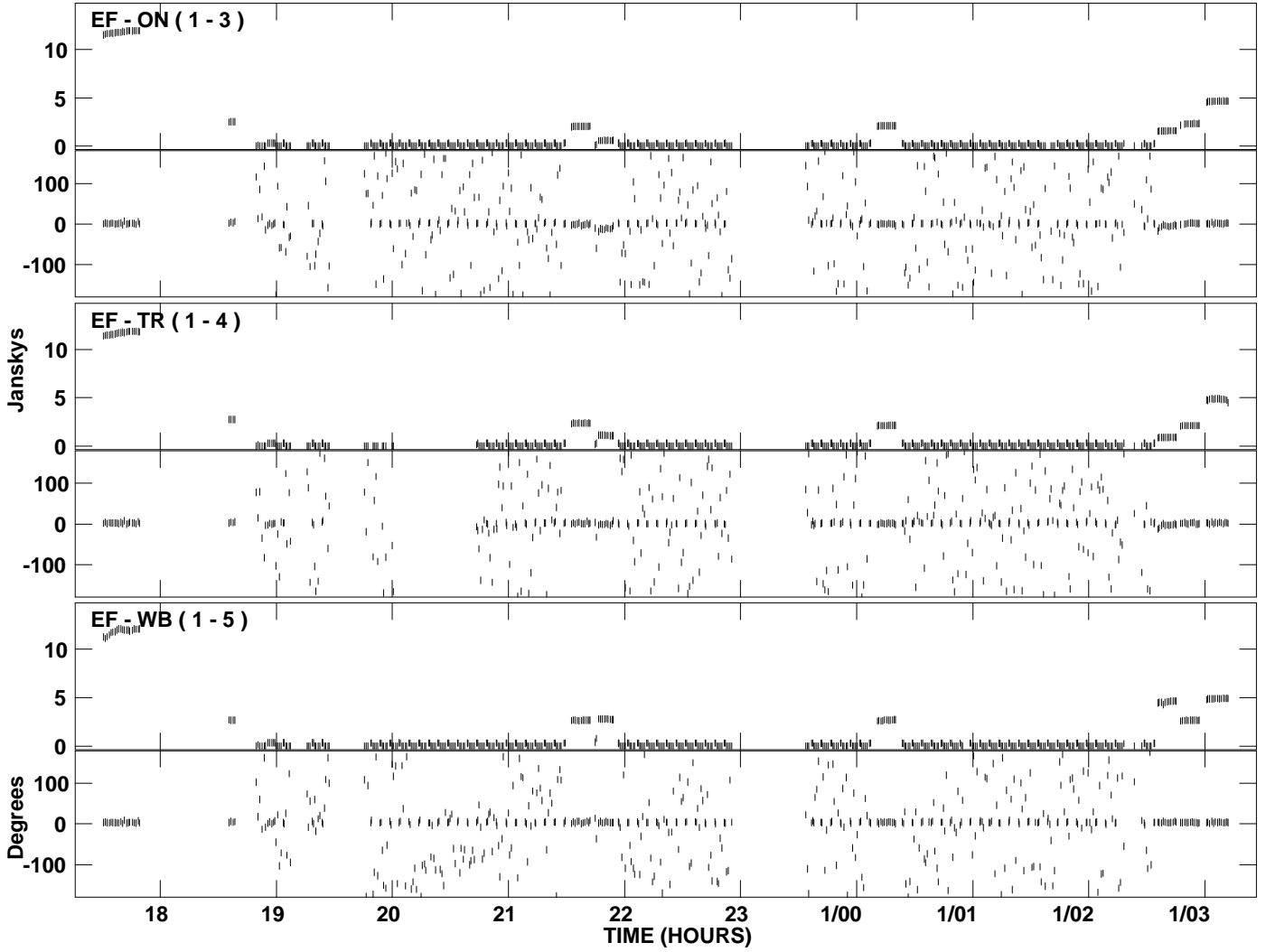
PLot file version 8 created 26-MAR-2009 12:02:40
Amplitude and Phase vs Time for RF006A.UVDATA.1 Vect aver. CL # 3
IF 4 CHAN 1 - 16 STK LL



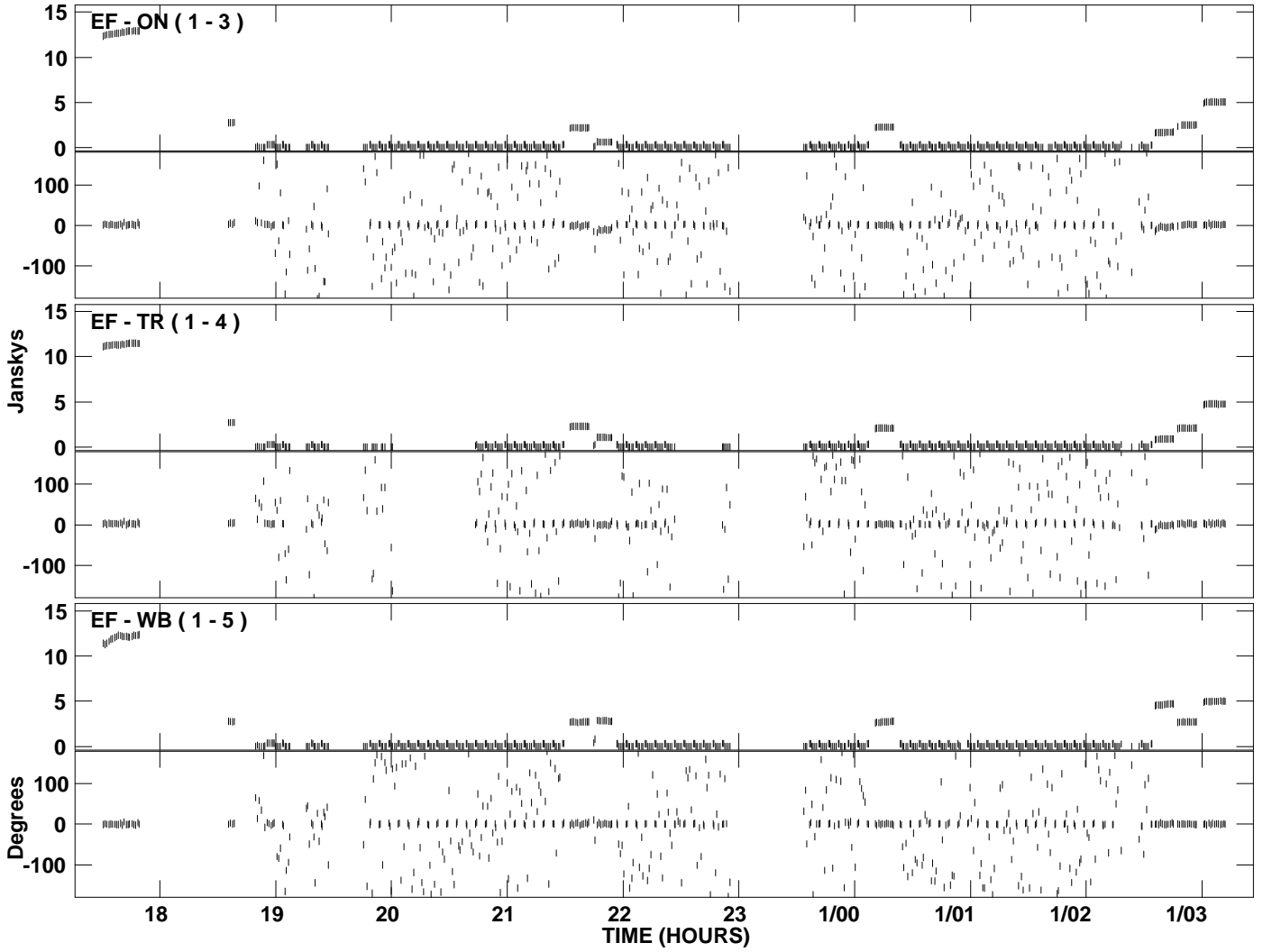
PLot file version 9 created 26-MAR-2009 12:02:46
Amplitude and Phase vs Time for RF006A.UVDATA.1 Vect aver. CL # 3
IF 5 CHAN 1 - 16 STK LL



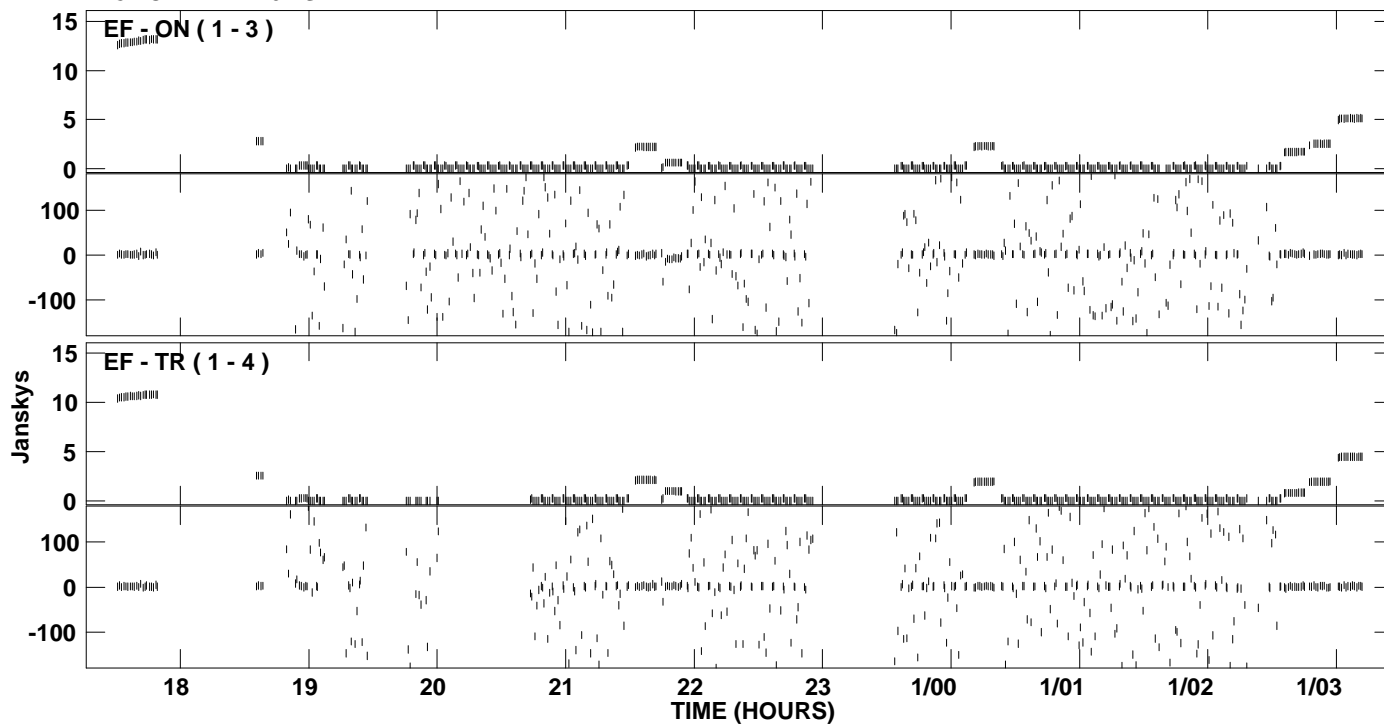
PLot file version 10 created 26-MAR-2009 12:02:53
Amplitude andPhase vs Time for RF006A.UVDATA.1 Vect aver. CL # 3
IF 6 CHAN 1 - 16 STK LL



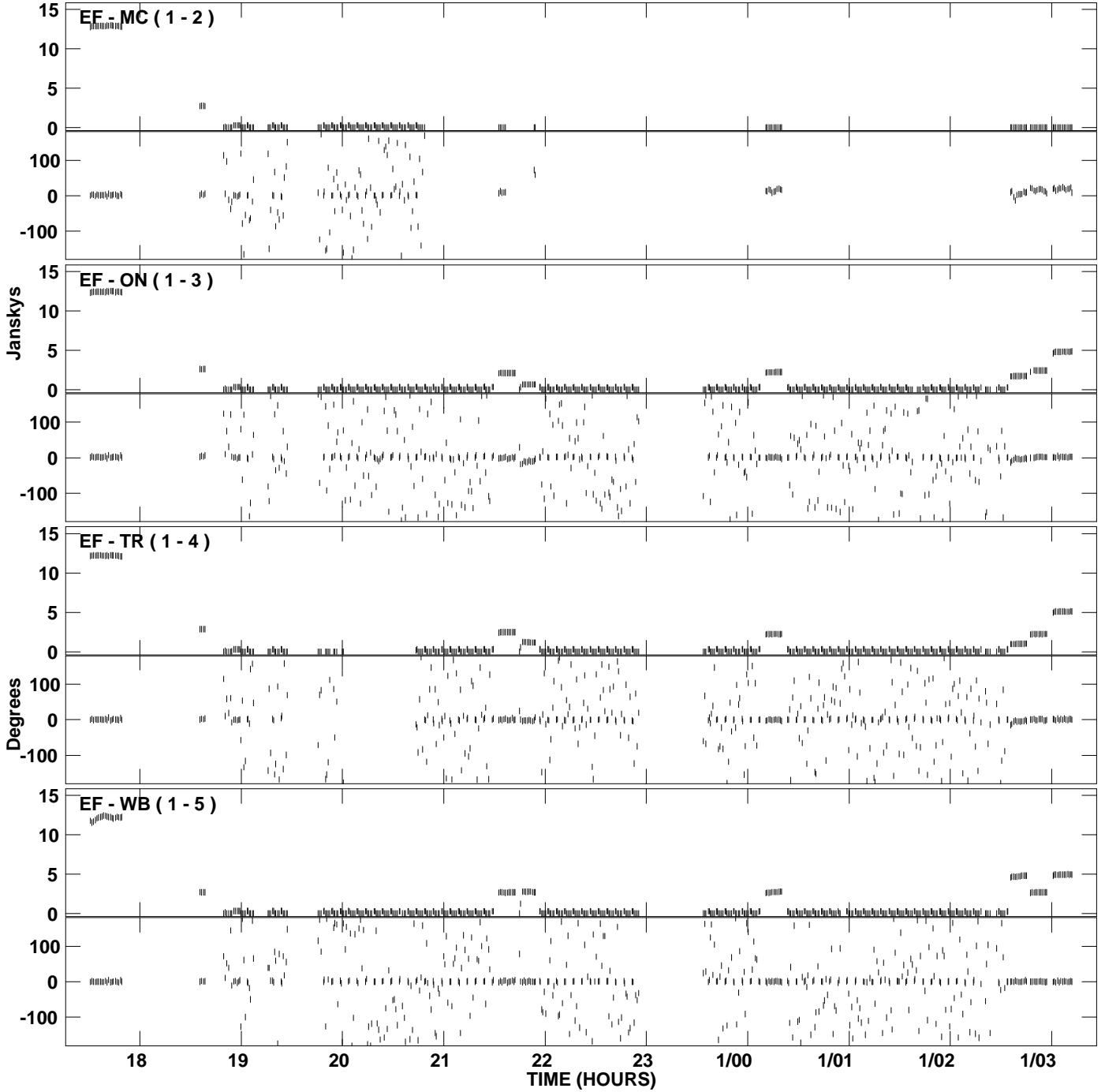
PLot file version 11 created 26-MAR-2009 12:02:59
Amplitude andPhase vs Time for RF006A.UVDATA.1 Vect aver. CL # 3
IF 7 CHAN 1 - 16 STK LL



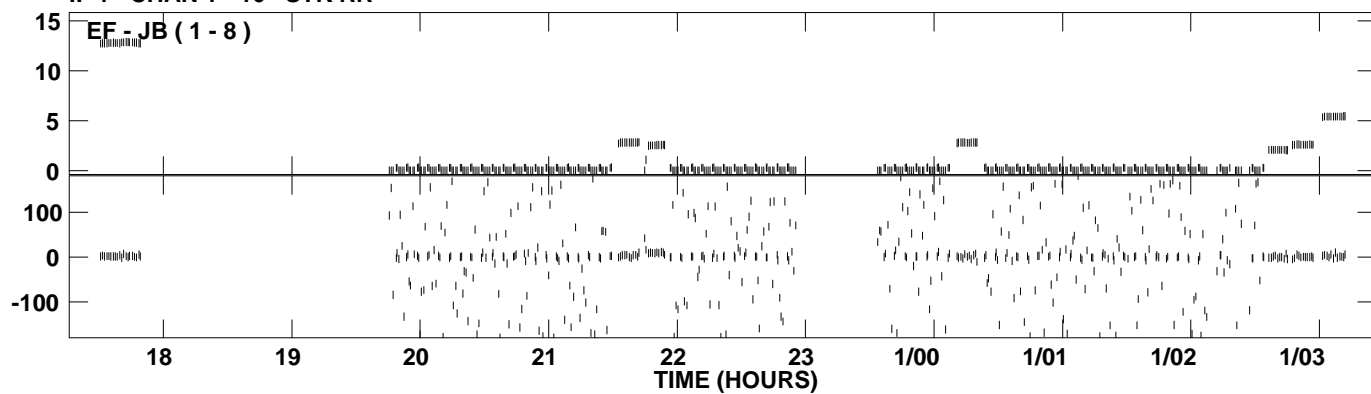
PLot file version 12 created 26-MAR-2009 12:03:05
Amplitude andPhase vs Time for RF006A.UVDATA.1 Vect aver. CL # 3
IF 8 CHAN 1 - 16 STK LL



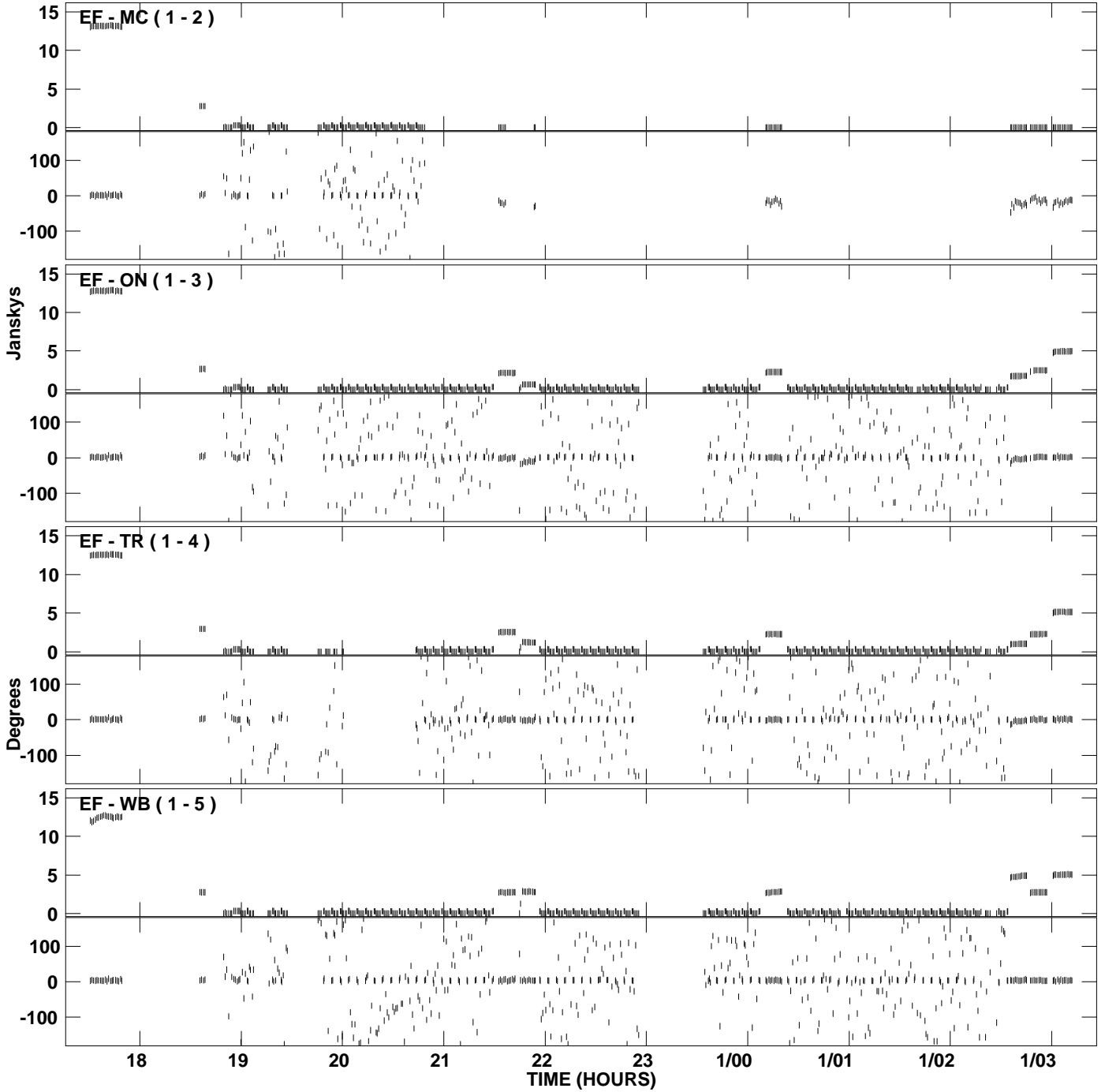
PLot file version 13 created 26-MAR-2009 12:03:11
Amplitude and Phase vs Time for RF006A.UVDATA.1 Vect aver. CL # 3
IF 1 CHAN 1 - 16 STK RR



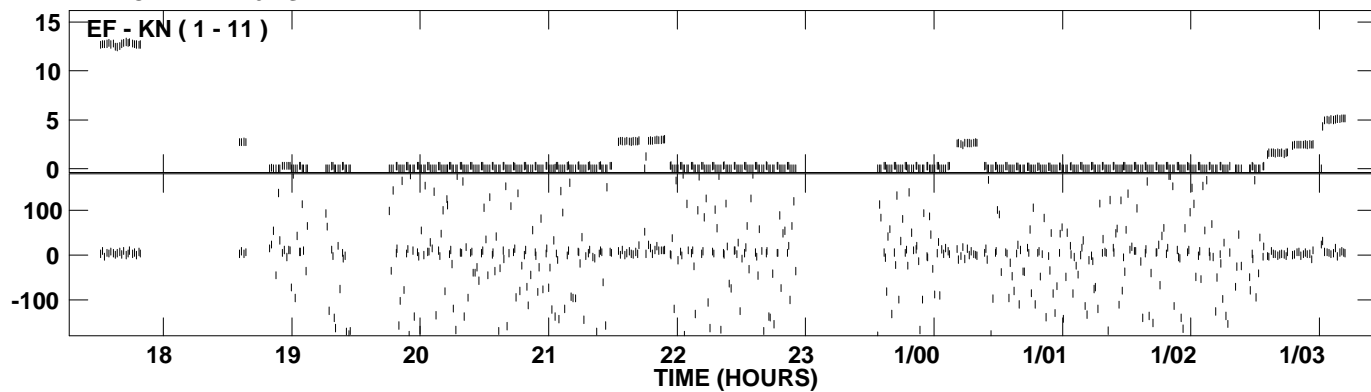
PLot file version 14 created 26-MAR-2009 12:03:11
Amplitude and Phase vs Time for RF006A.UVDATA.1 Vect aver. CL # 3
IF 1 CHAN 1 - 16 STK RR



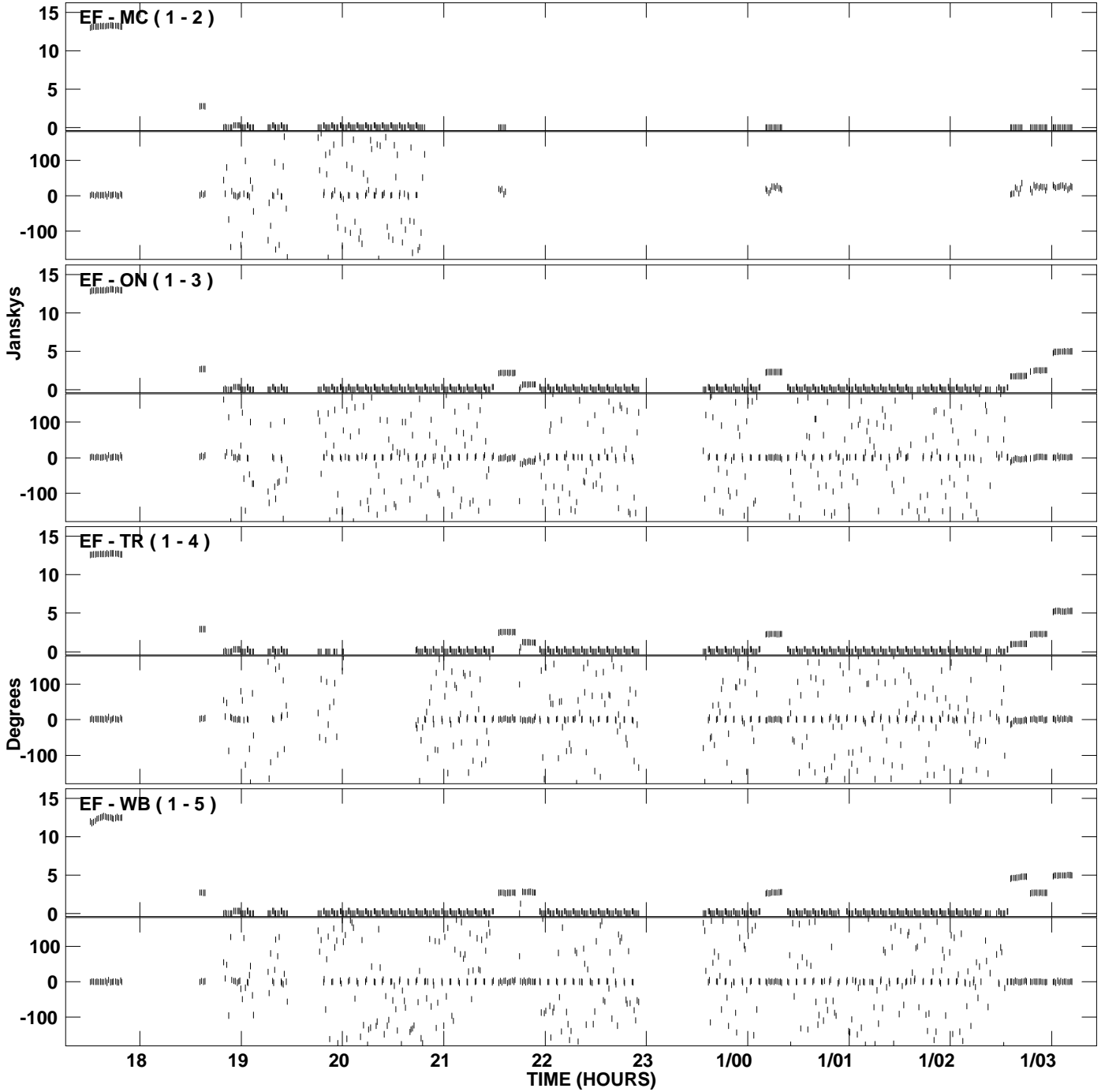
PLot file version 15 created 26-MAR-2009 12:03:17
Amplitude and Phase vs Time for RF006A.UVDATA.1 Vect aver. CL # 3
IF 2 CHAN 1 - 16 STK RR



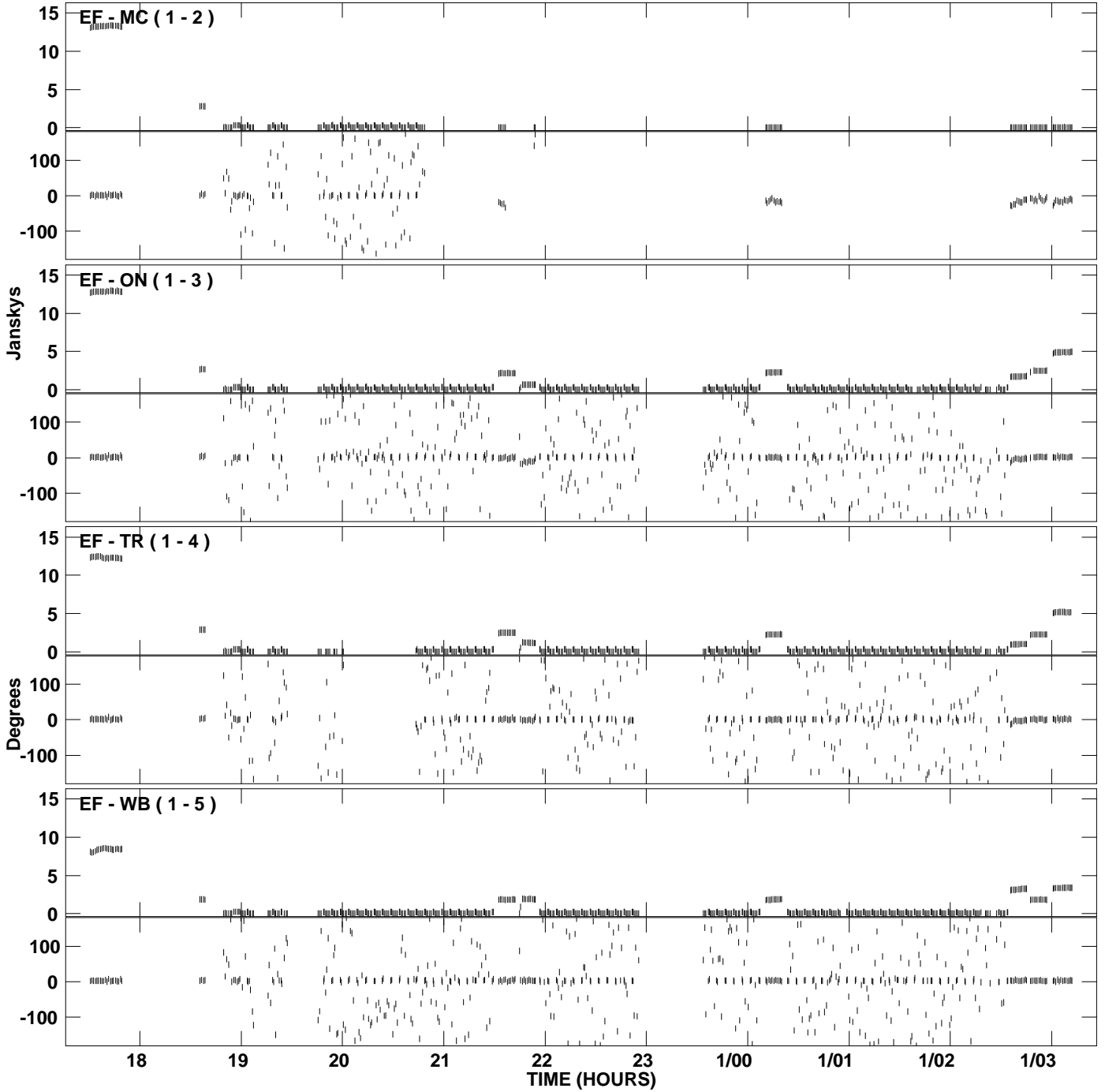
PLot file version 16 created 26-MAR-2009 12:03:17
Amplitude andPhase vs Time for RF006A.UVDATA.1 Vect aver. CL # 3
IF 2 CHAN 1 - 16 STK RR



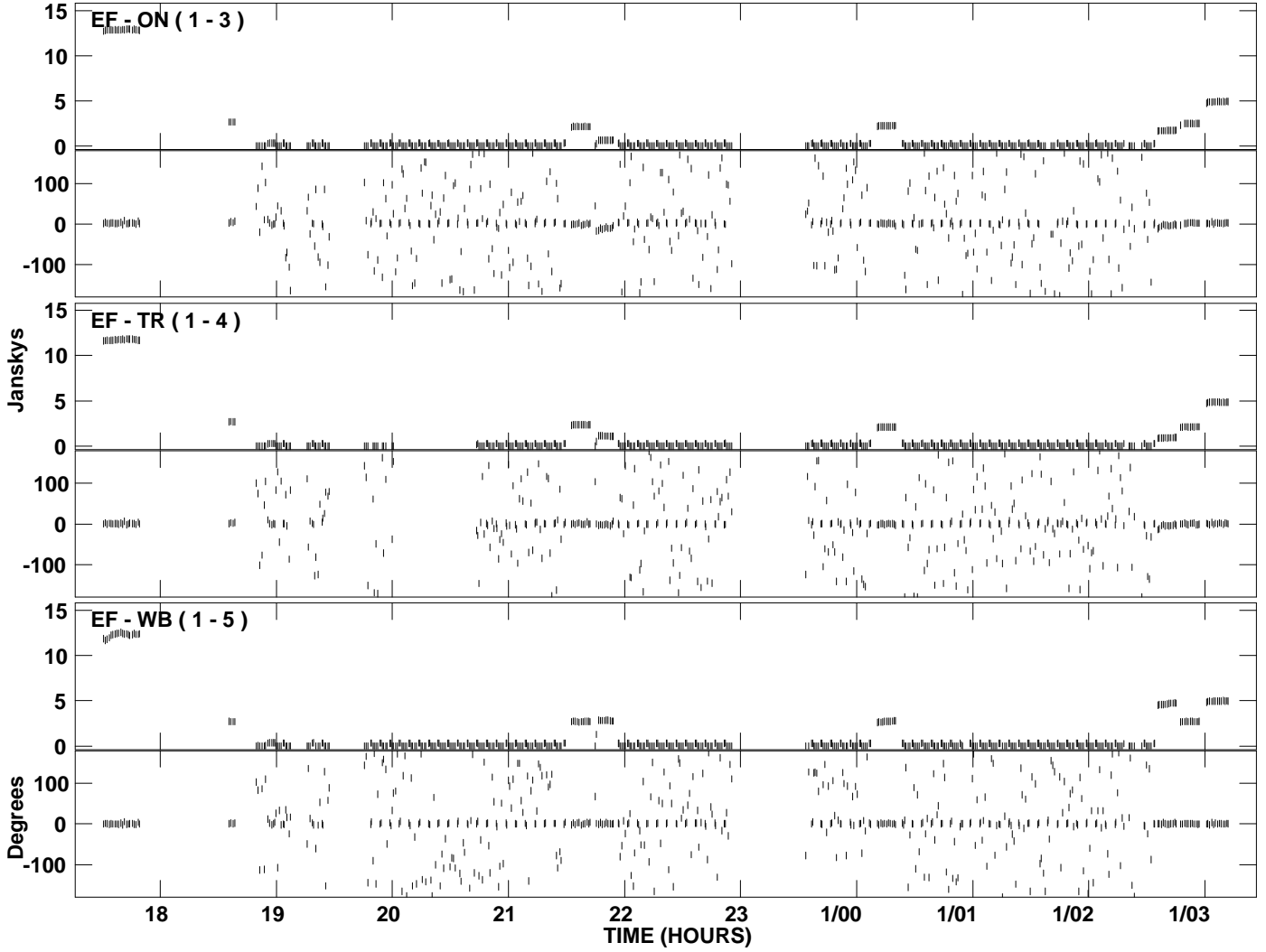
PLot file version 17 created 26-MAR-2009 12:03:22
Amplitude and Phase vs Time for RF006A.UVDATA.1 Vect aver. CL # 3
IF 3 CHAN 1 - 16 STK RR



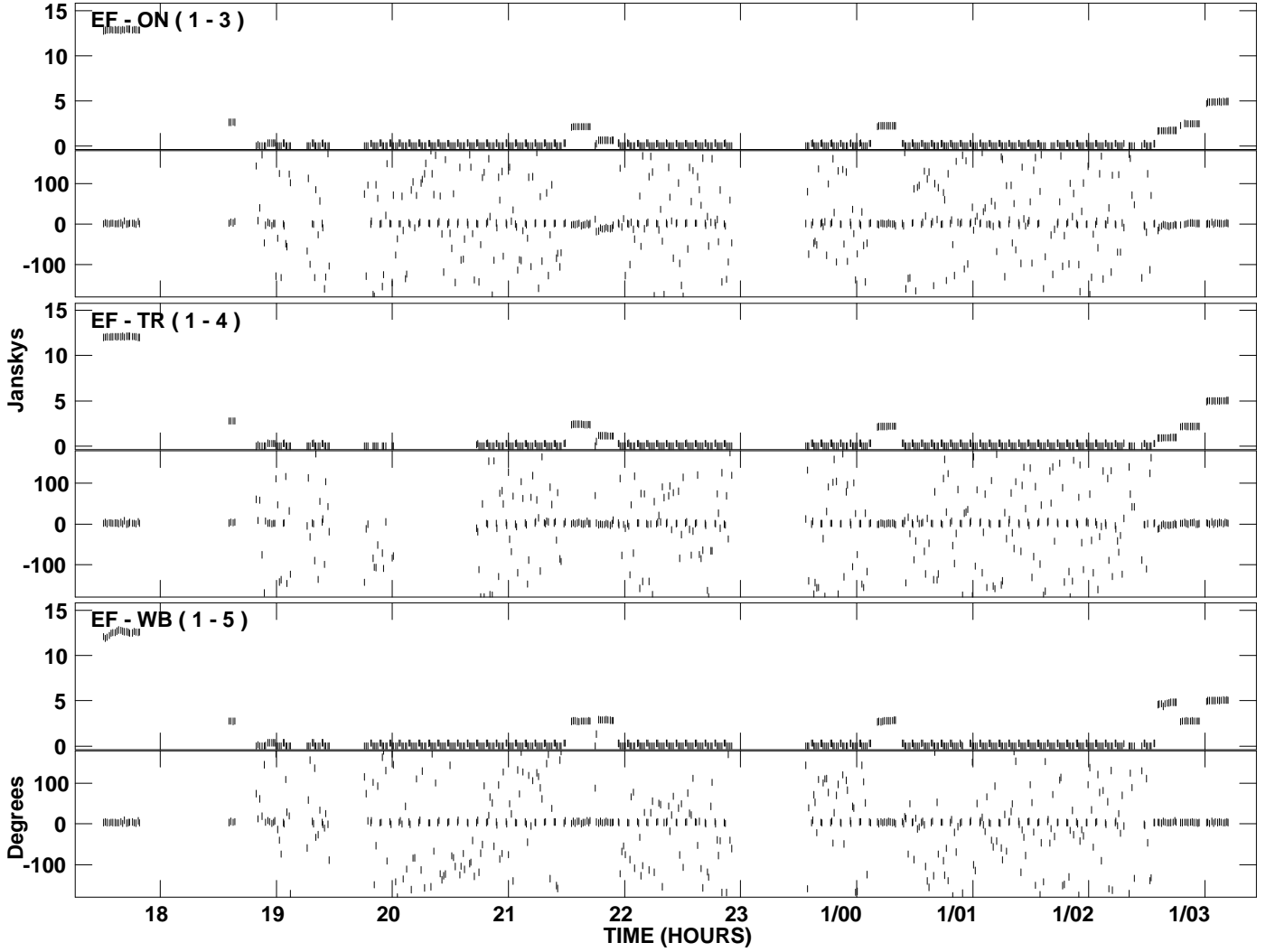
PLot file version 18 created 26-MAR-2009 12:03:28
Amplitude and Phase vs Time for RF006A.UVDATA.1 Vect aver. CL # 3
IF 4 CHAN 1 - 16 STK RR



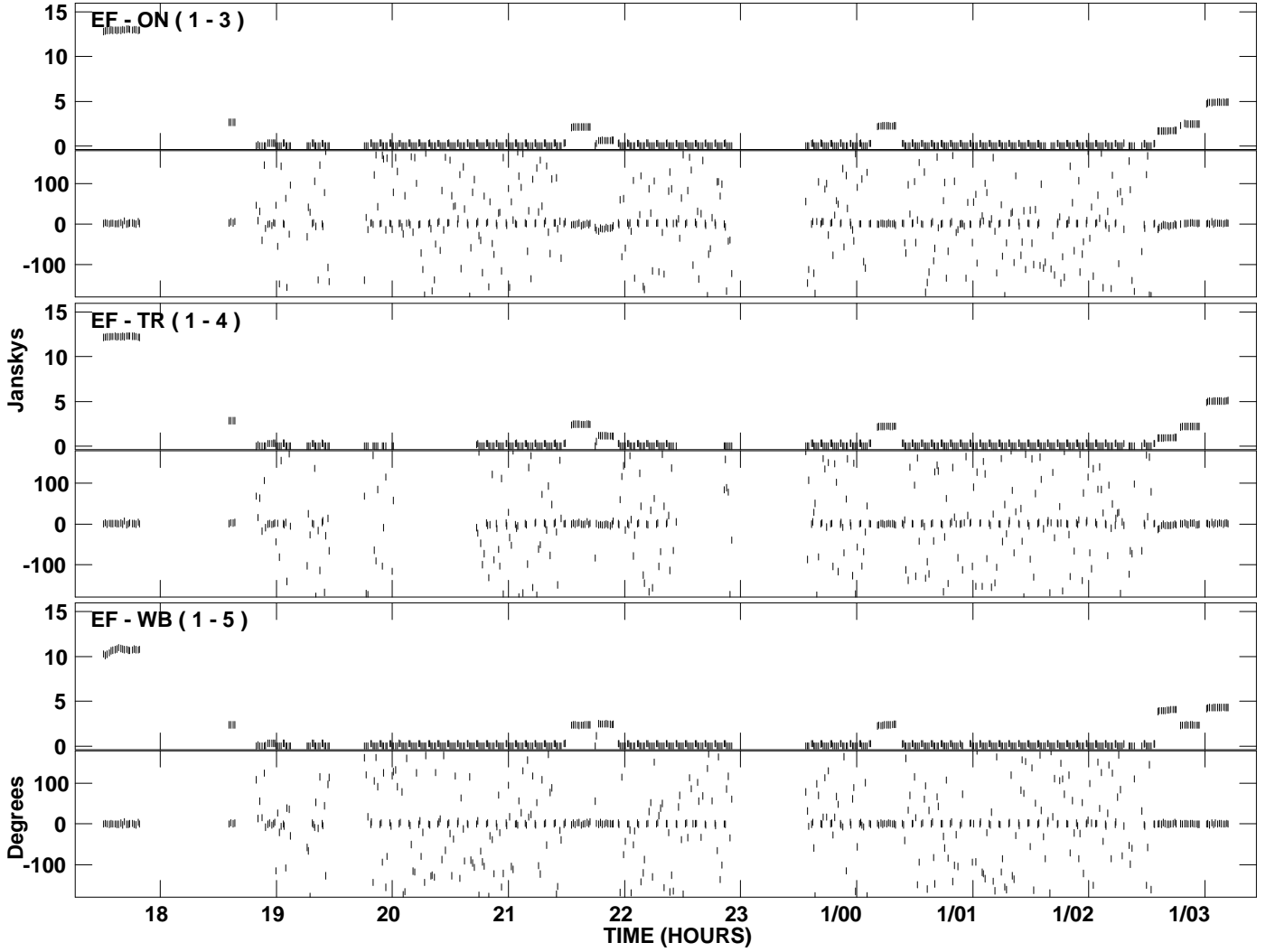
PLot file version 19 created 26-MAR-2009 12:03:33
Amplitude and Phase vs Time for RF006A.UVDATA.1 Vect aver. CL # 3
IF 5 CHAN 1 - 16 STK RR



PLot file version 20 created 26-MAR-2009 12:03:39
Amplitude andPhase vs Time for RF006A.UVDATA.1 Vect aver. CL # 3
IF 6 CHAN 1 - 16 STK RR



PLot file version 21 created 26-MAR-2009 12:03:44
Amplitude andPhase vs Time for RF006A.UVDATA.1 Vect aver. CL # 3
IF 7 CHAN 1 - 16 STK RR



PLot file version 22 created 26-MAR-2009 12:03:49
Amplitude andPhase vs Time for RF006A.UVDATA.1 Vect aver. CL # 3
IF 8 CHAN 1 - 16 STK RR

