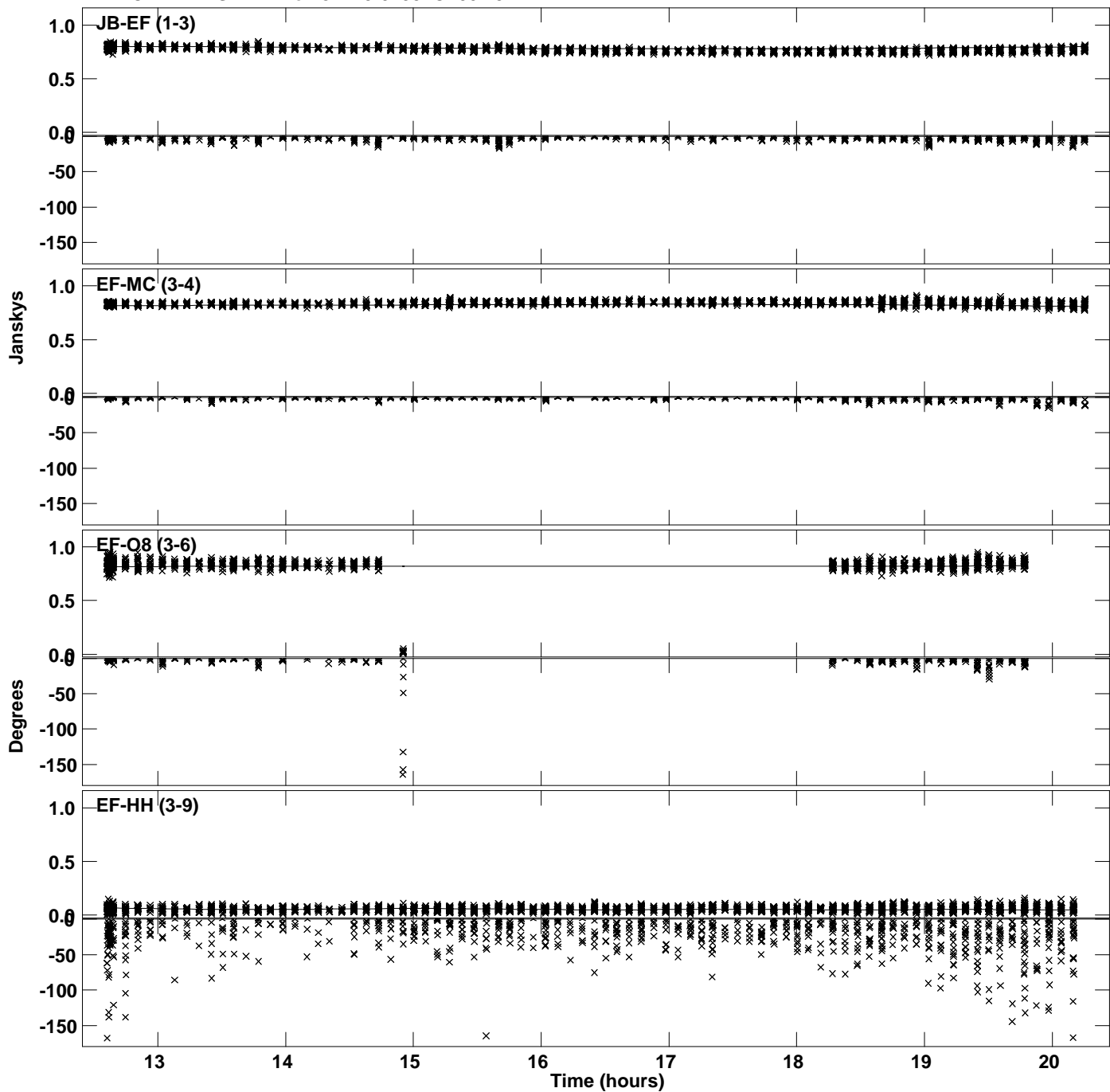
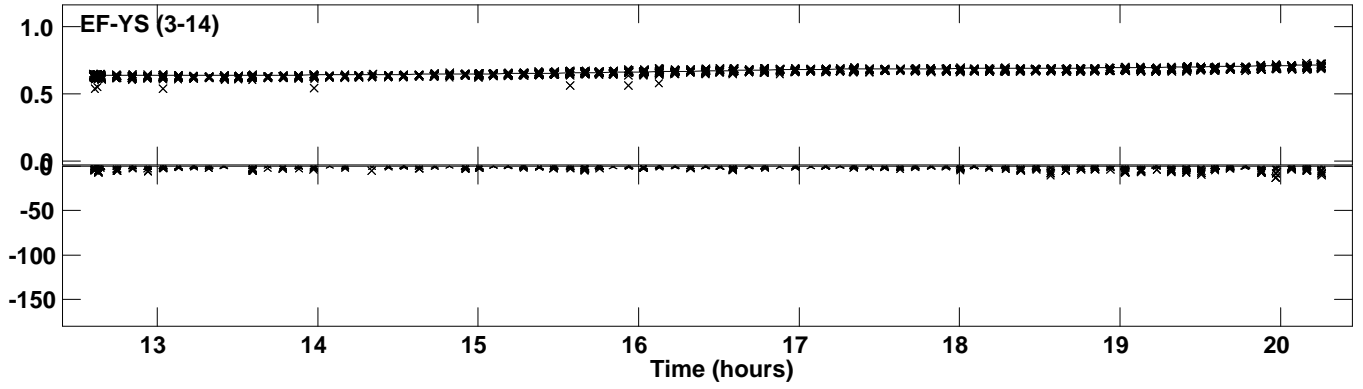


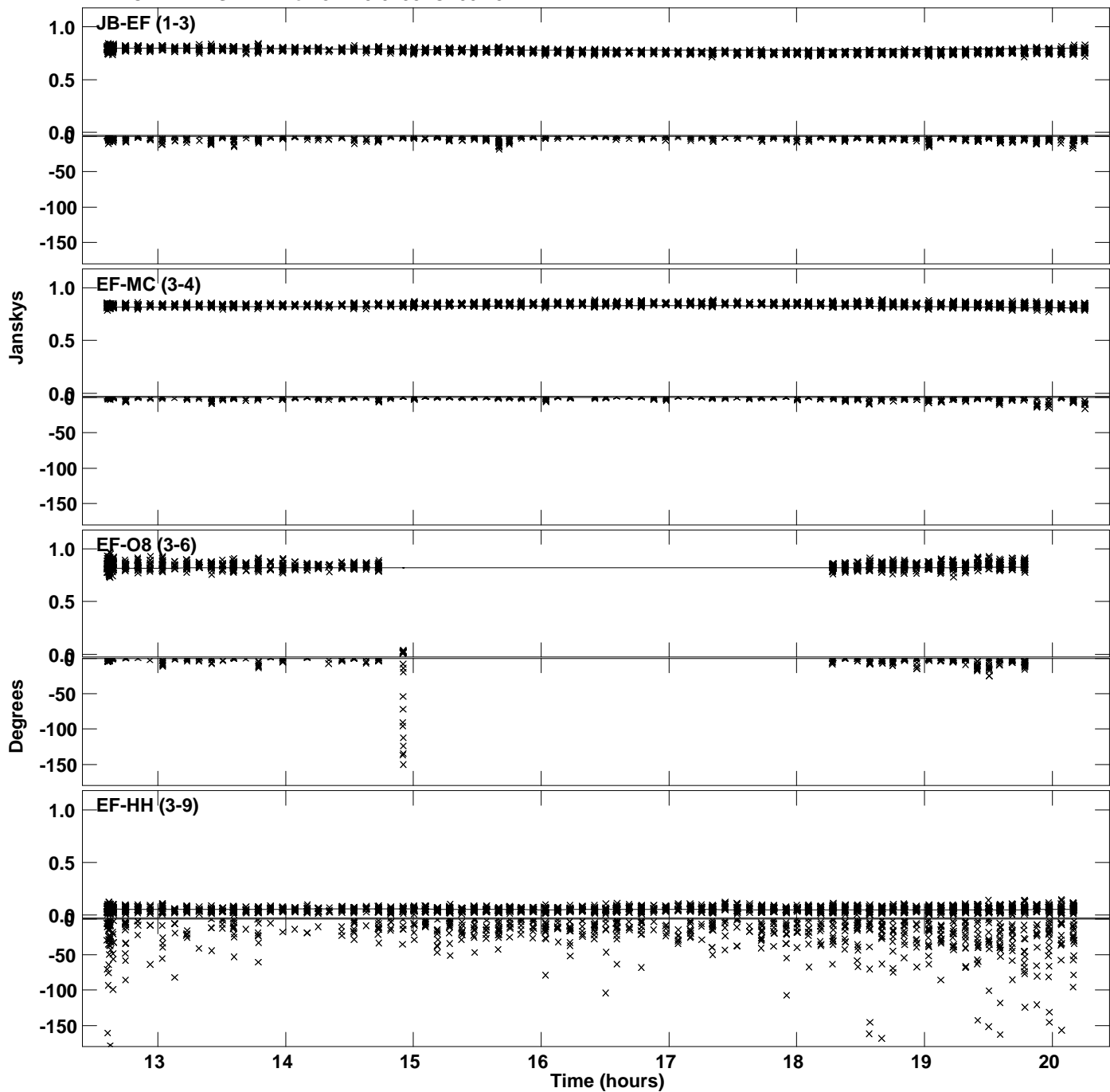
Plot file version 1 created 14-OCT-2021 15:46:46  
Amplitude and Phase vs Time for J1745-0753.MULTI.1 CL # 3  
IF 1 CHAN 1 STK LL of J1745-0753.ICL001.3



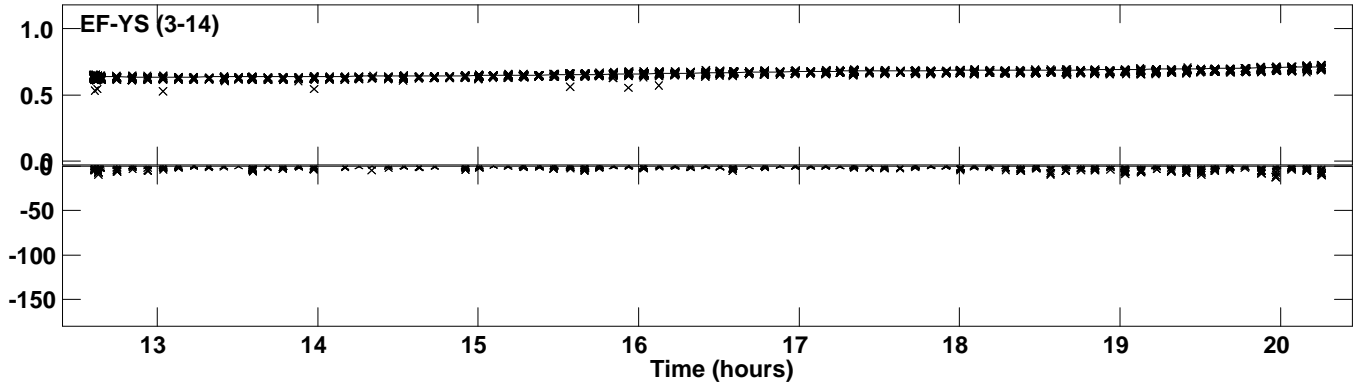
PLot file version 2 created 14-OCT-2021 15:46:46  
Amplitude andPhase vs Time for J1745-0753.MULTI.1 CL # 3  
IF 1 CHAN 1 STK LL of J1745-0753.ICL001.3



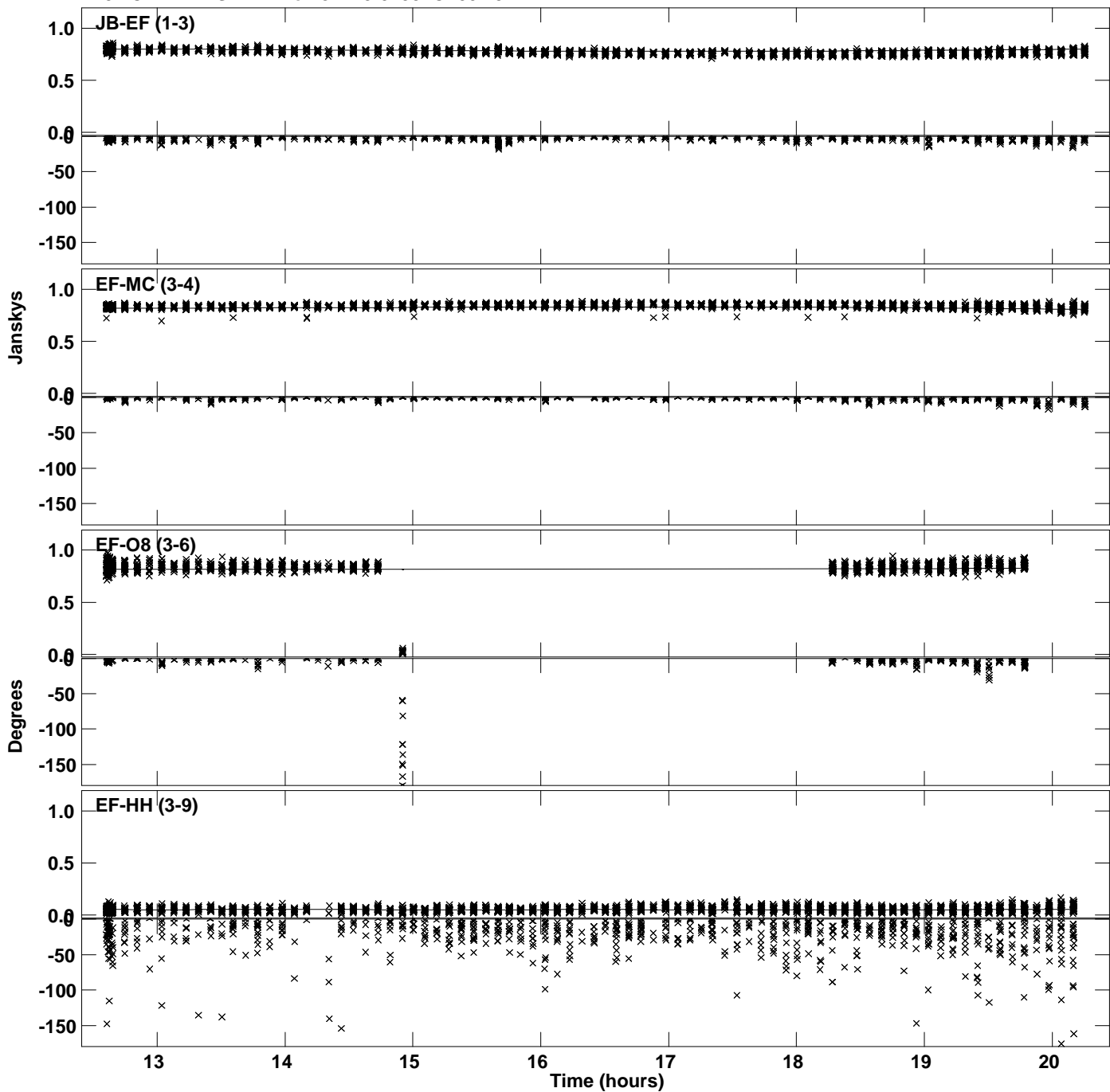
Plot file version 3 created 14-OCT-2021 15:46:46  
Amplitude and Phase vs Time for J1745-0753.MULTI.1 CL # 3  
IF 2 CHAN 1 STK LL of J1745-0753.ICL001.3



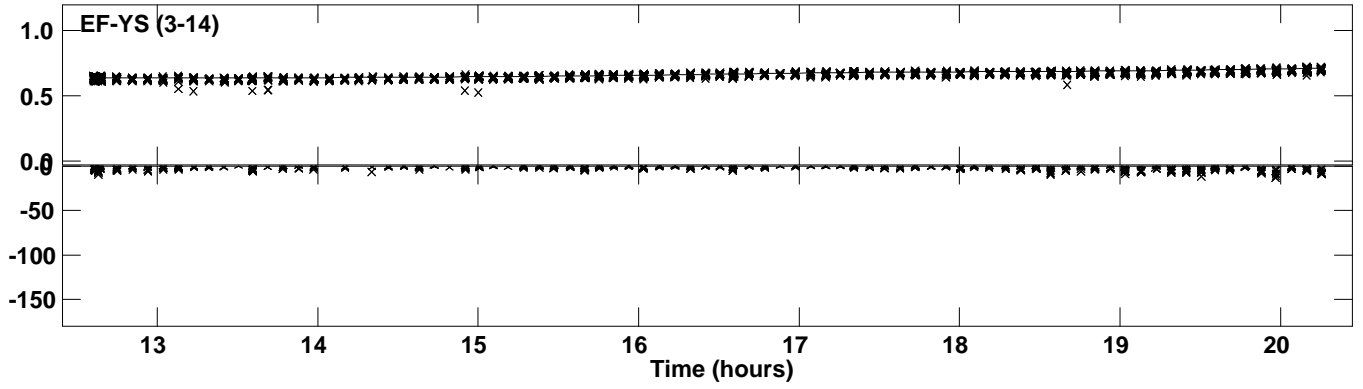
PLot file version 4 created 14-OCT-2021 15:46:46  
Amplitude andPhase vs Time for J1745-0753.MULTI.1 CL # 3  
IF 2 CHAN 1 STK LL of J1745-0753.ICL001.3



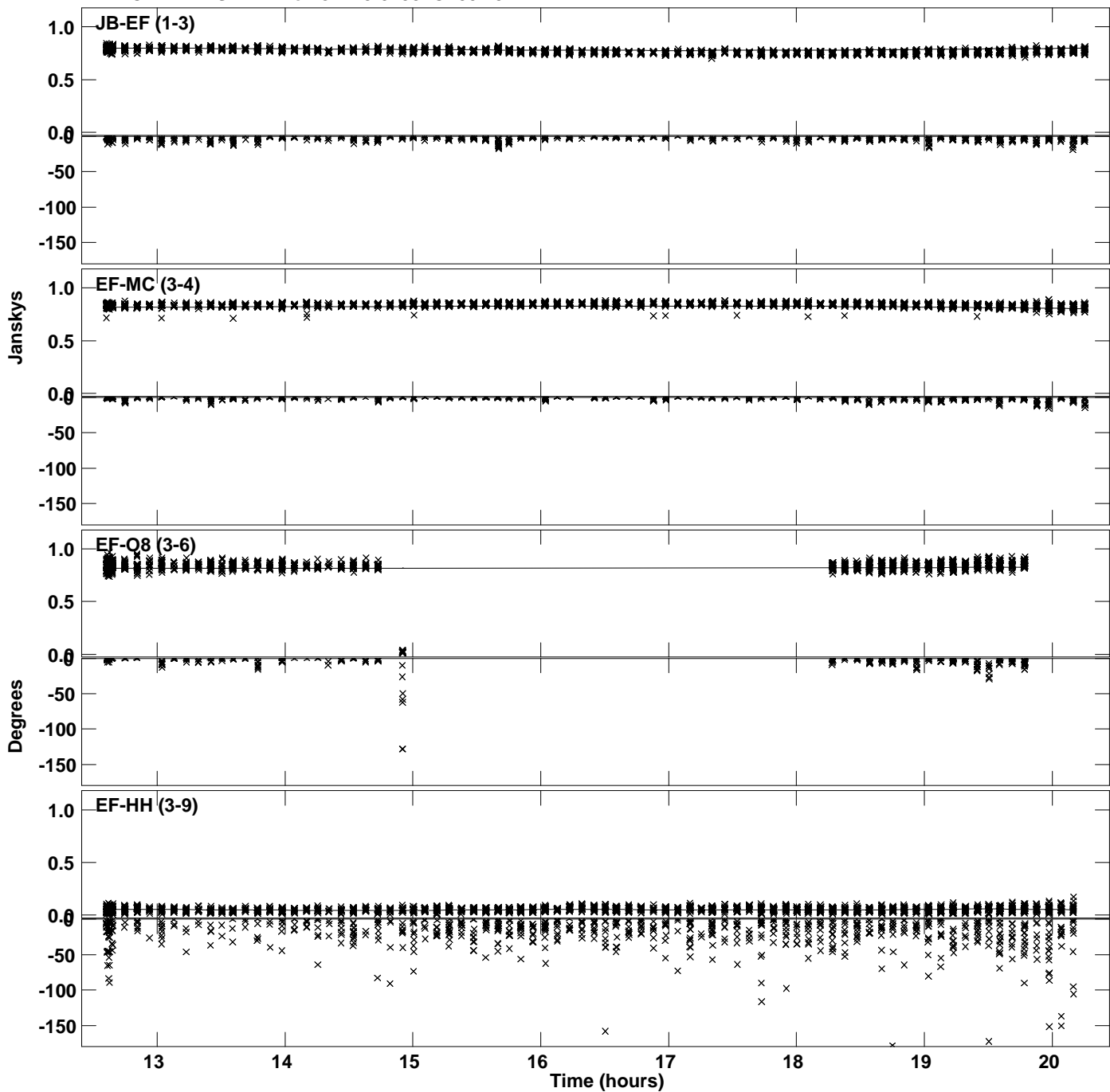
Plot file version 5 created 14-OCT-2021 15:46:47  
Amplitude and Phase vs Time for J1745-0753.MULTI.1 CL # 3  
IF 3 CHAN 1 STK LL of J1745-0753.ICL001.3



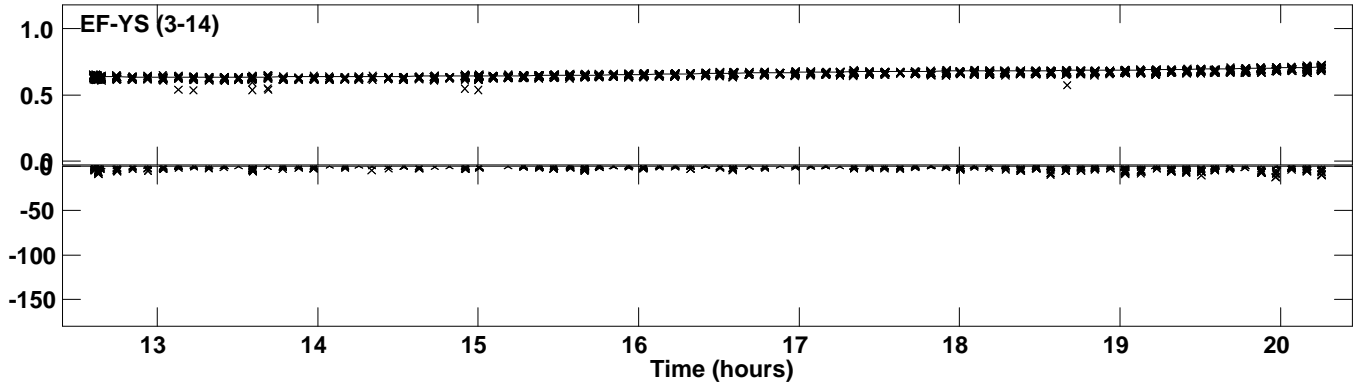
PLot file version 6 created 14-OCT-2021 15:46:47  
Amplitude andPhase vs Time for J1745-0753.MULTI.1 CL # 3  
IF 3 CHAN 1 STK LL of J1745-0753.ICL001.3



Plot file version 7 created 14-OCT-2021 15:46:47  
Amplitude and Phase vs Time for J1745-0753.MULTI.1 CL # 3  
IF 4 CHAN 1 STK LL of J1745-0753.ICL001.3

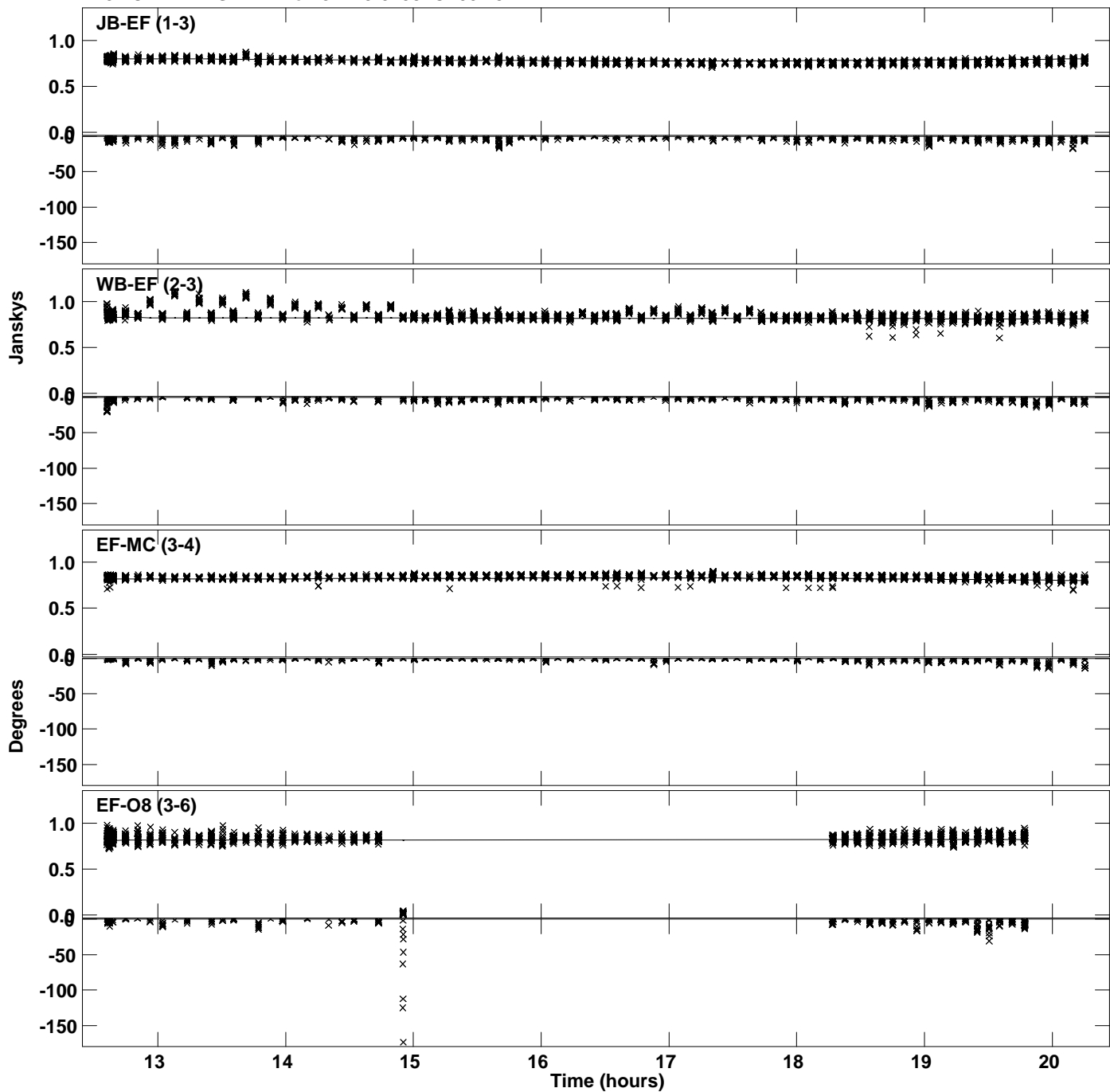


PLot file version 8 created 14-OCT-2021 15:46:47  
Amplitude andPhase vs Time for J1745-0753.MULTI.1 CL # 3  
IF 4 CHAN 1 STK LL of J1745-0753.ICL001.3

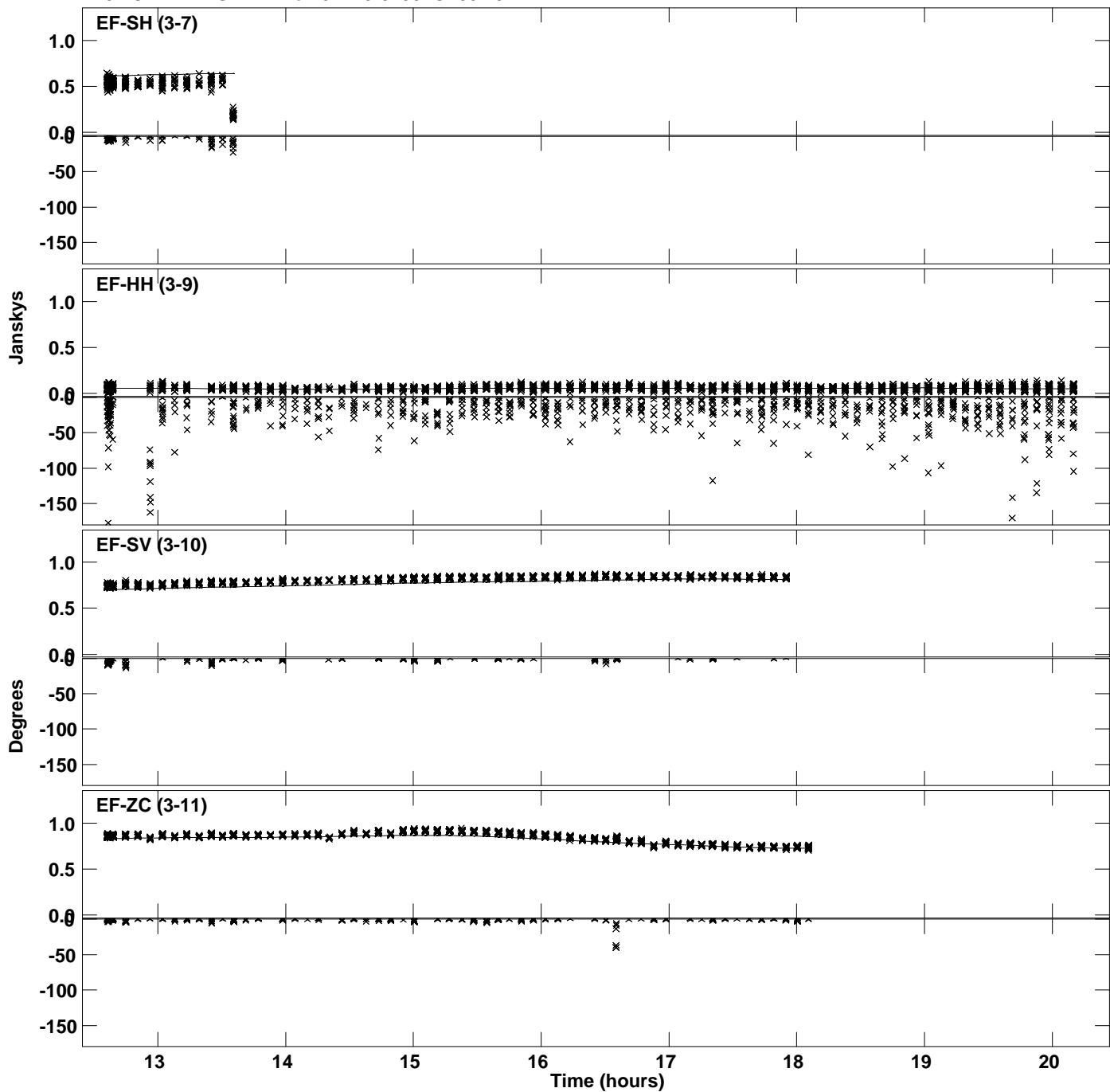




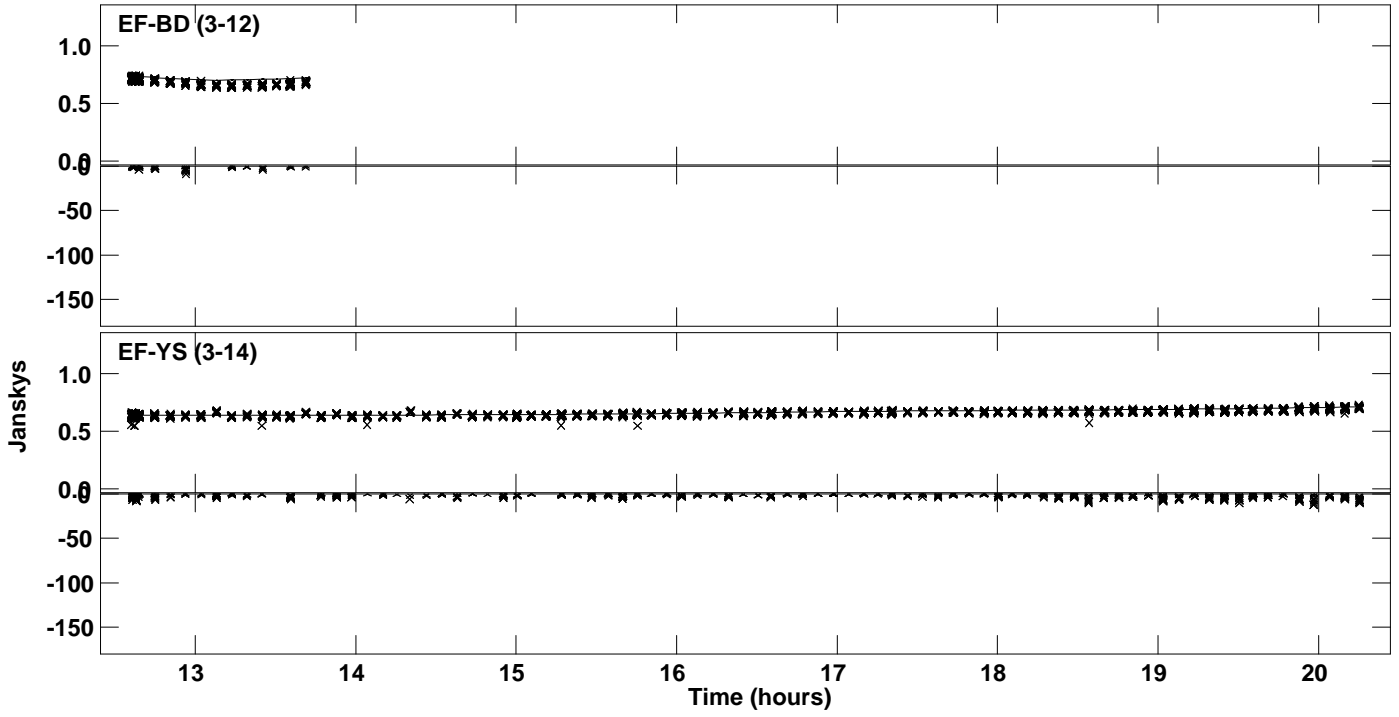
Plot file version 9 created 14-OCT-2021 15:46:47  
Amplitude and Phase vs Time for J1745-0753.MULTI.1 CL # 3  
IF 5 CHAN 1 STK LL of J1745-0753.ICL001.3



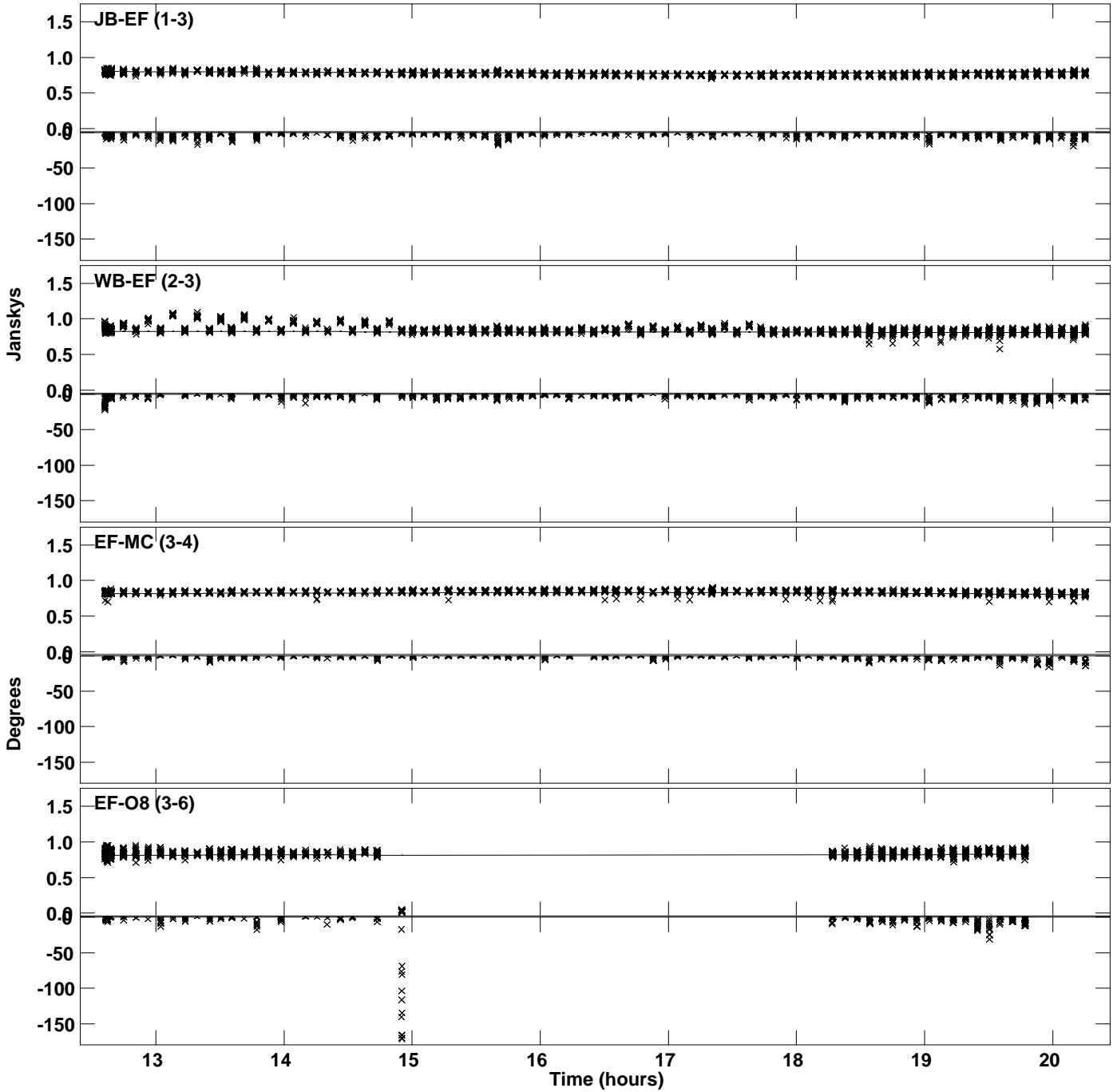
Plot file version 10 created 14-OCT-2021 15:46:47  
Amplitude and Phase vs Time for J1745-0753.MULTI.1 CL # 3  
IF 5 CHAN 1 STK LL of J1745-0753.ICL001.3



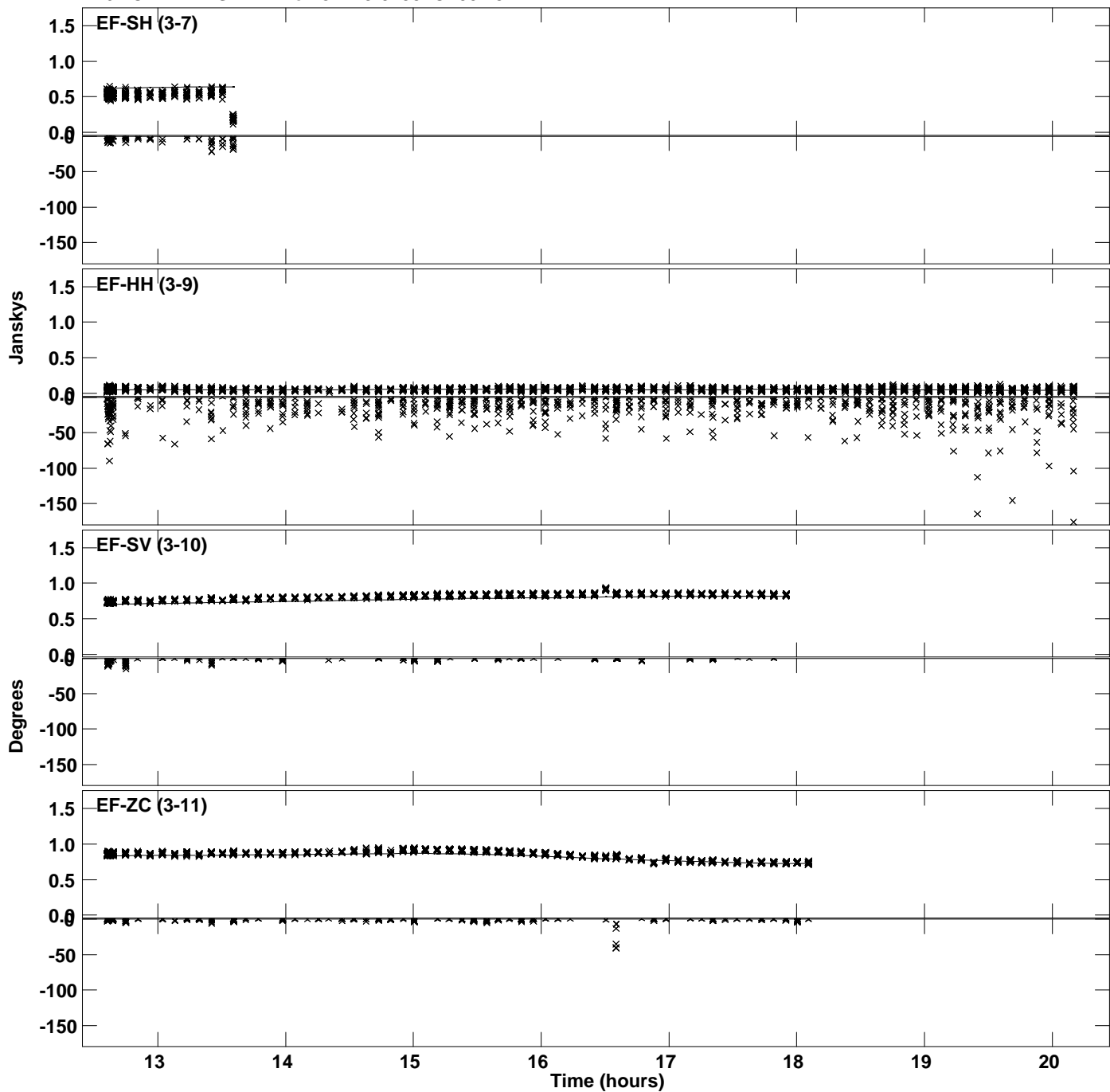
PLot file version 11 created 14-OCT-2021 15:46:47  
Amplitude andPhase vs Time for J1745-0753.MULTI.1 CL # 3  
IF 5 CHAN 1 STK LL of J1745-0753.ICL001.3



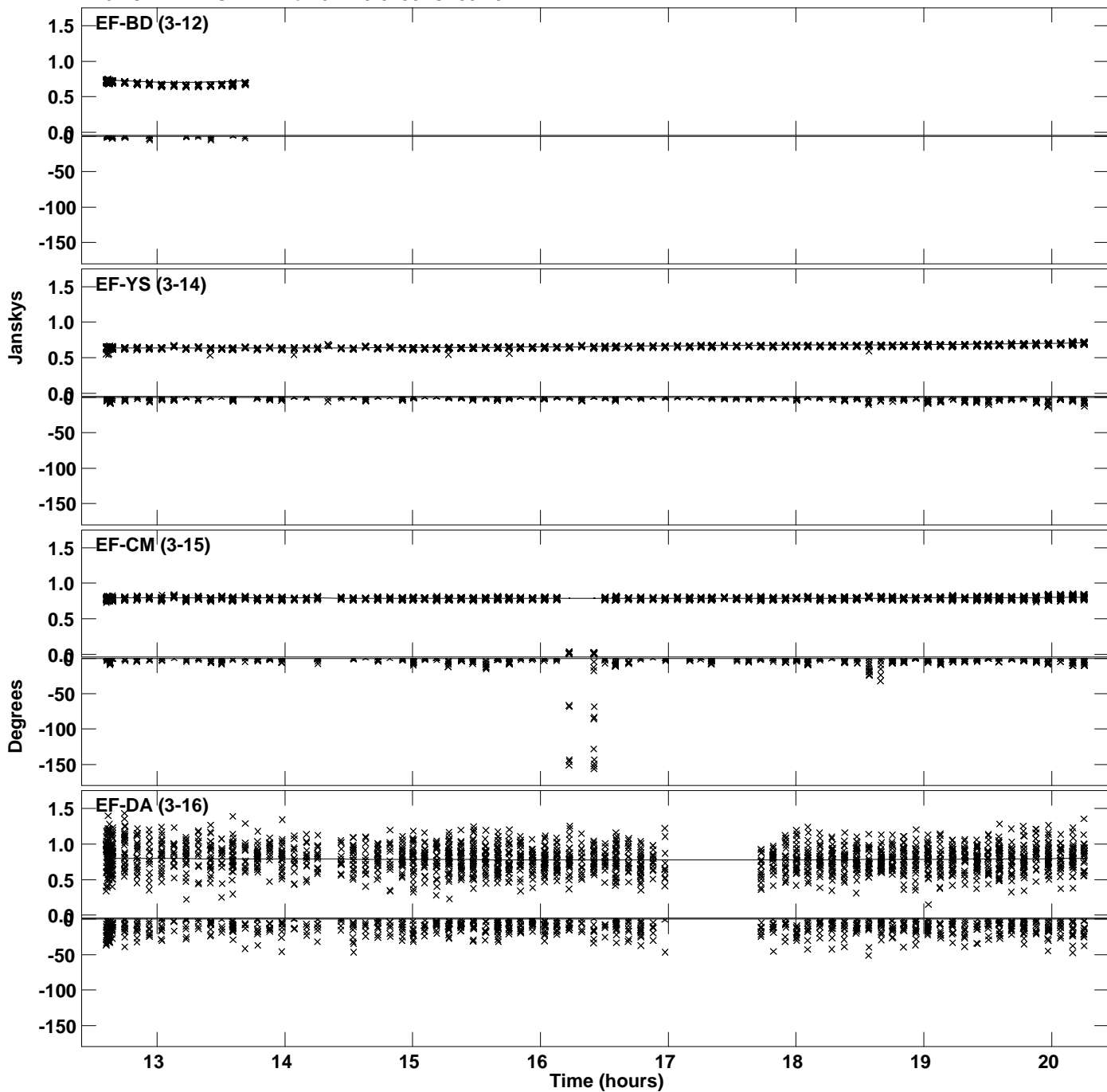
Plot file version 12 created 14-OCT-2021 15:46:48  
Amplitude and Phase vs Time for J1745-0753.MULTI.1 CL # 3  
IF 6 CHAN 1 STK LL of J1745-0753.ICL001.3



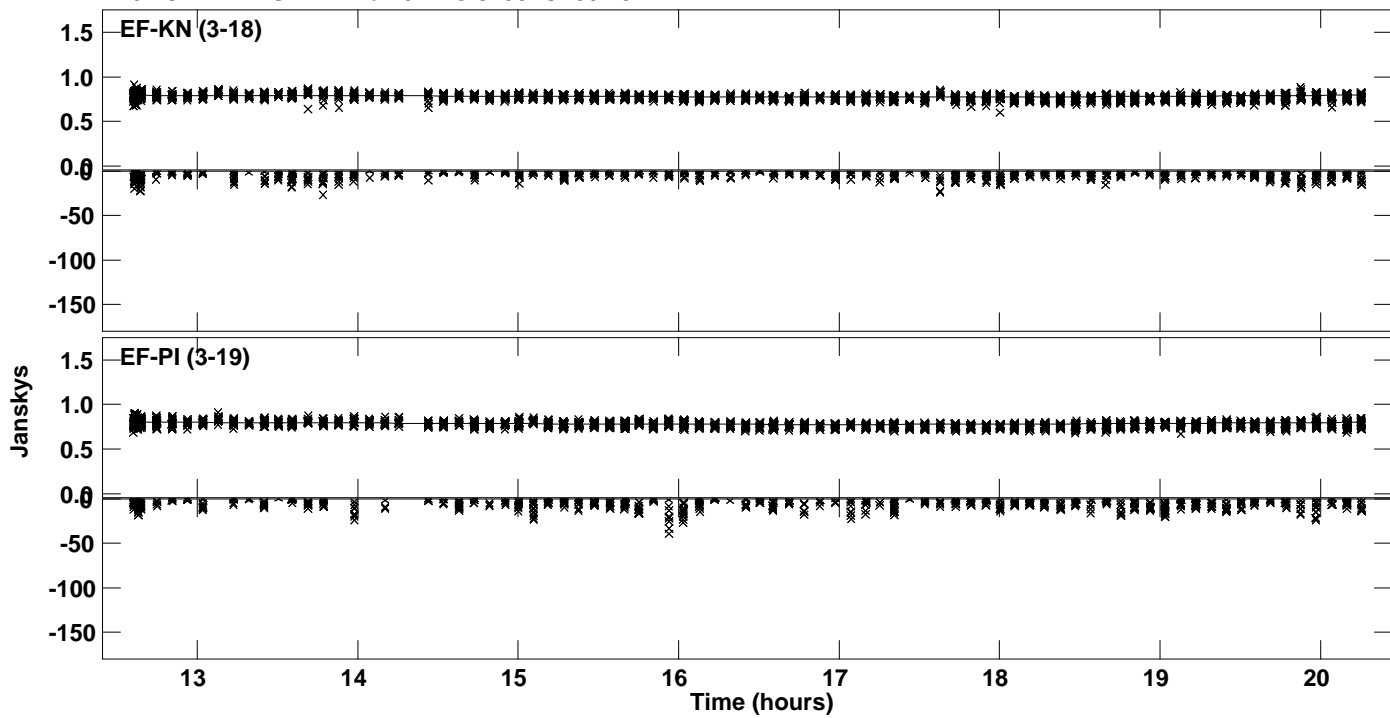
PLot file version 13 created 14-OCT-2021 15:46:48  
Amplitude andPhase vs Time for J1745-0753.MULTI.1 CL # 3  
IF 6 CHAN 1 STK LL of J1745-0753.ICL001.3



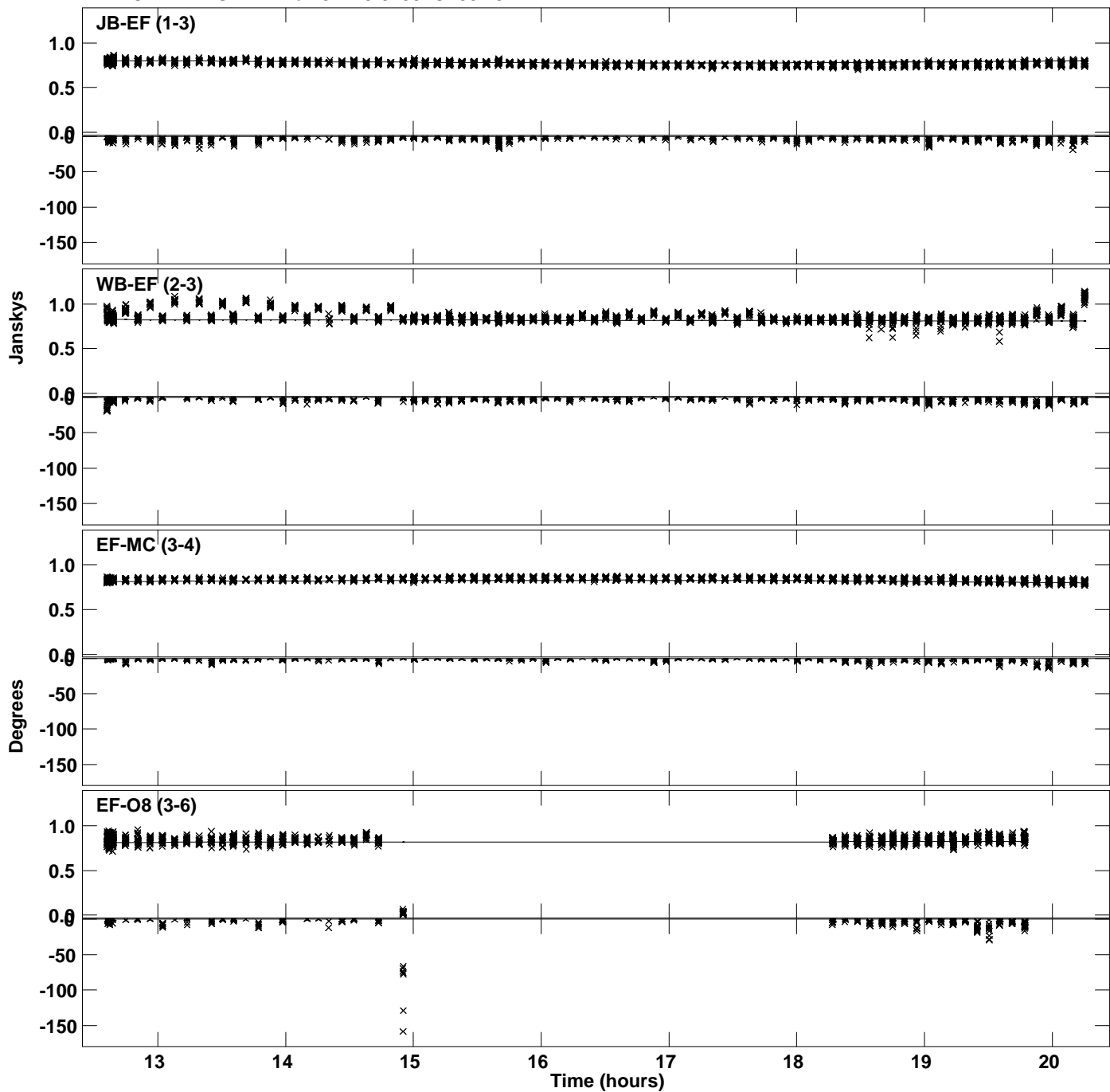
Plot file version 14 created 14-OCT-2021 15:46:48  
Amplitude and Phase vs Time for J1745-0753.MULTI.1 CL # 3  
IF 6 CHAN 1 STK LL of J1745-0753.ICL001.3



PLot file version 15 created 14-OCT-2021 15:46:48  
Amplitude andPhase vs Time for J1745-0753.MULTI.1 CL # 3  
IF 6 CHAN 1 STK LL of J1745-0753.ICL001.3

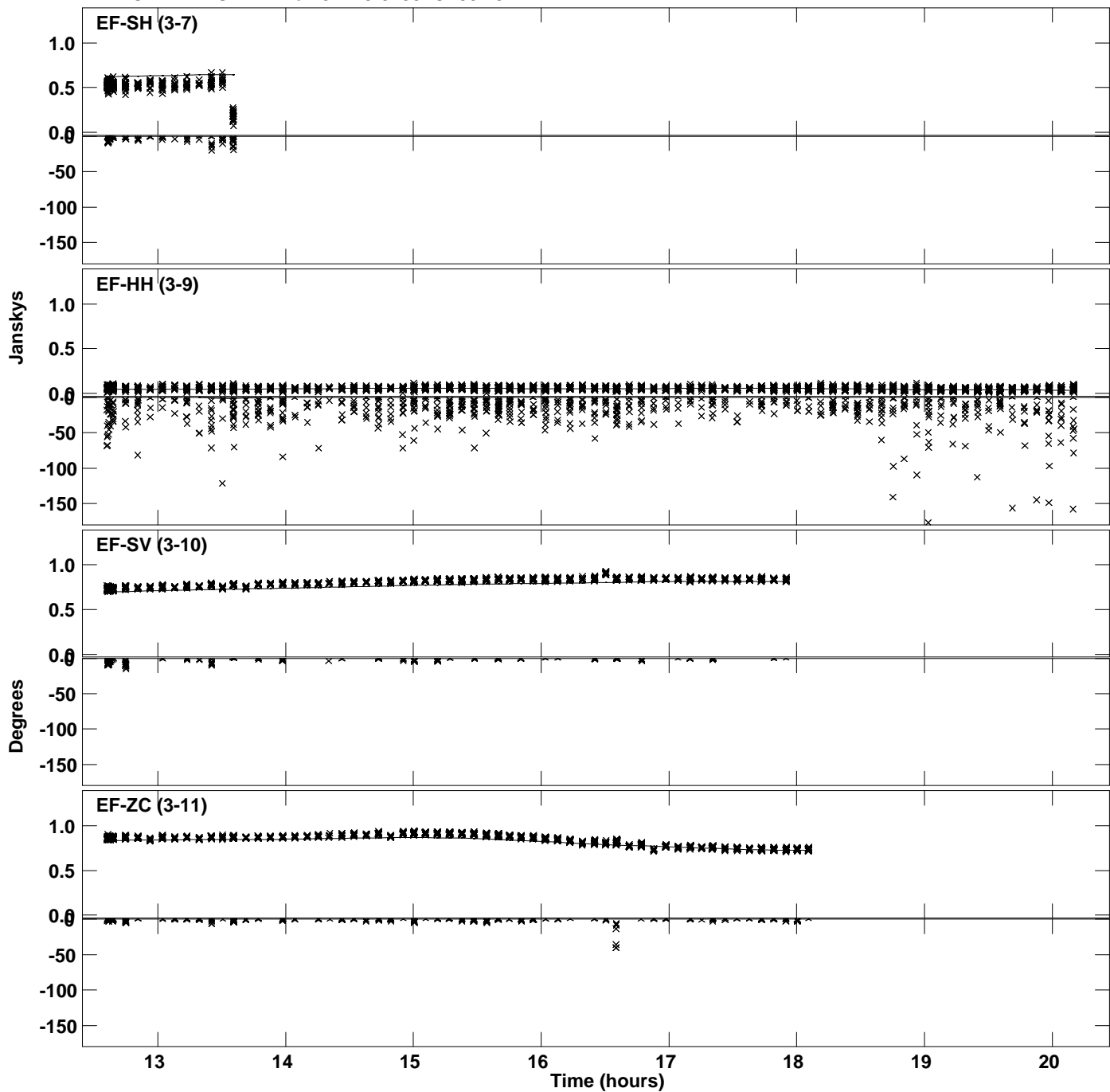


Plot file version 16 created 14-OCT-2021 15:46:48  
Amplitude and Phase vs Time for J1745-0753.MULTI.1 CL # 3  
IF 7 CHAN 1 STK LL of J1745-0753.ICL001.3

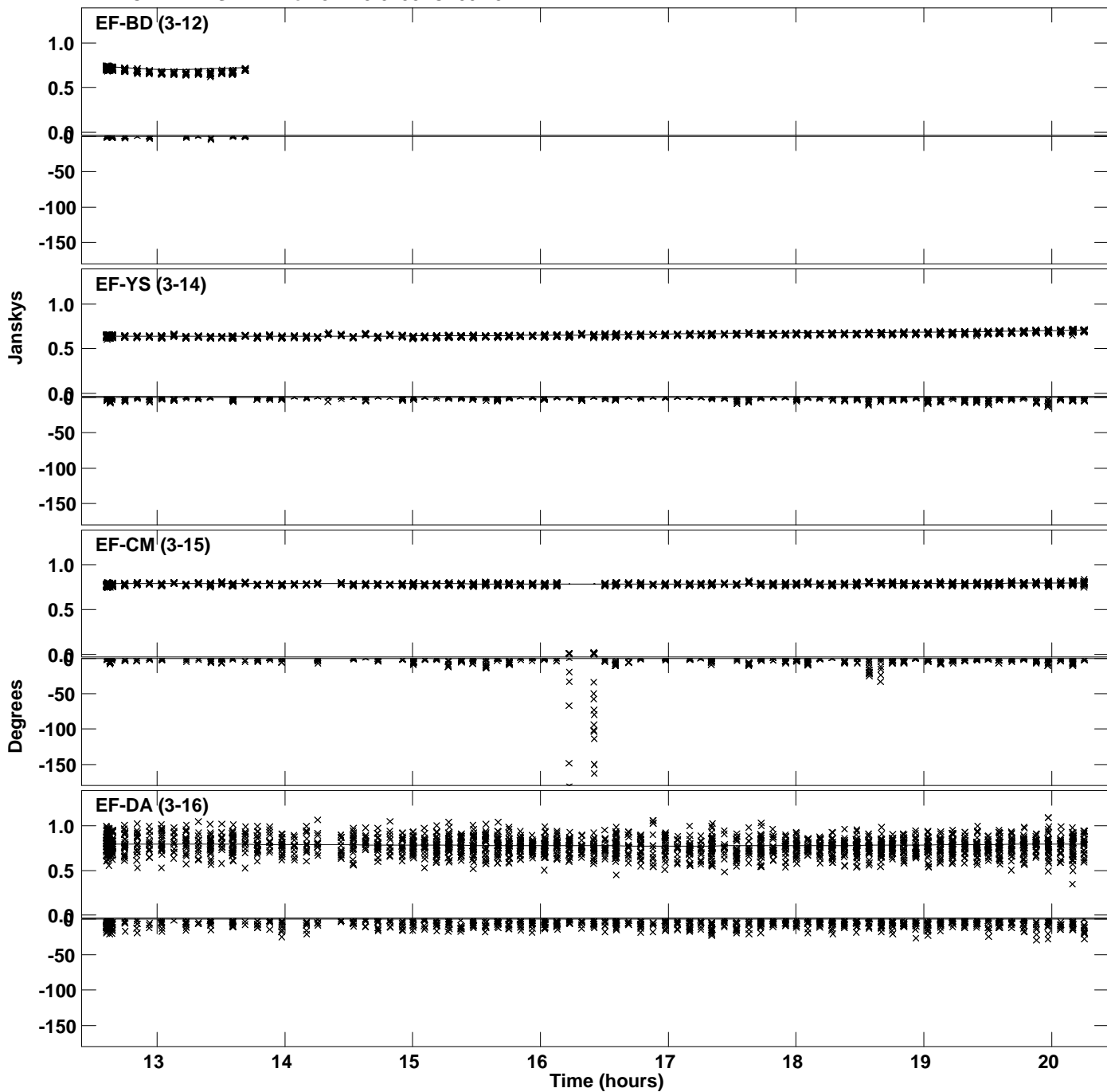




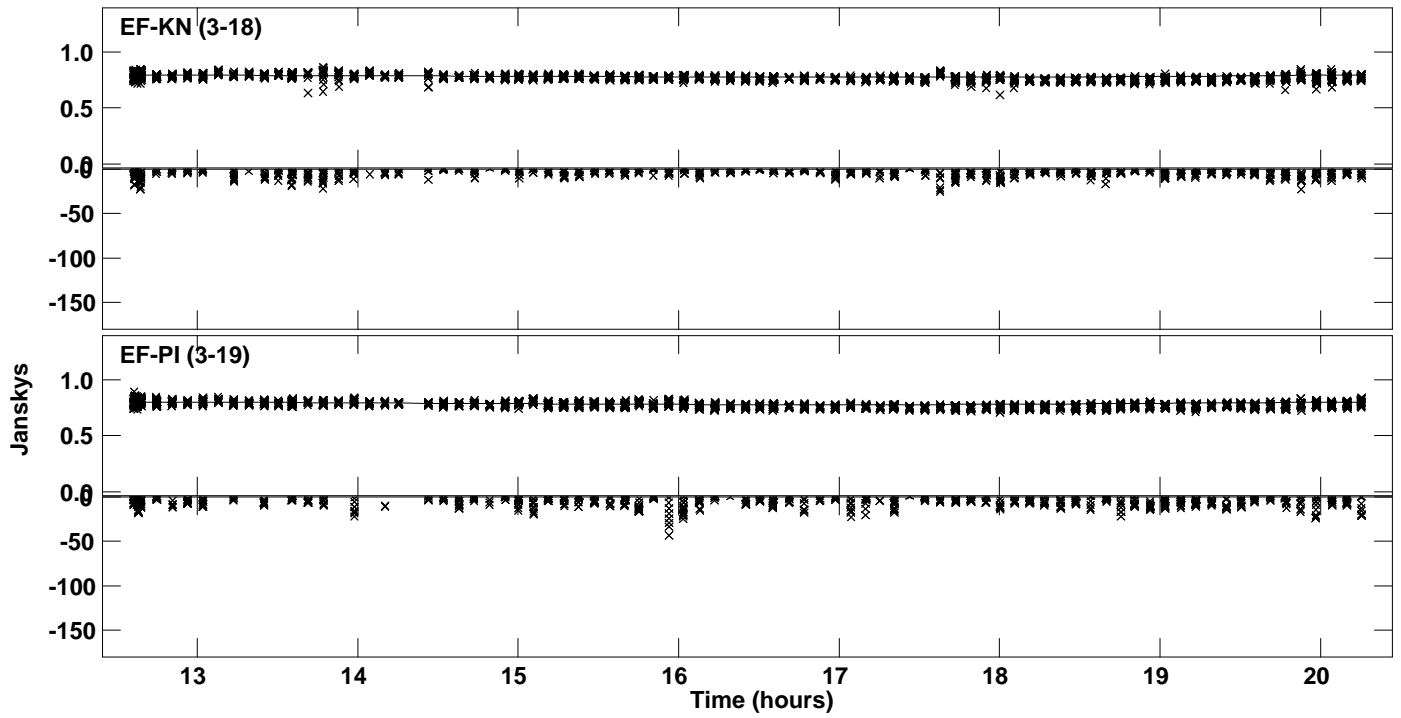
Plot file version 17 created 14-OCT-2021 15:46:48  
Amplitude andPhase vs Time for J1745-0753.MULTI.1 CL # 3  
IF 7 CHAN 1 STK LL of J1745-0753.ICL001.3



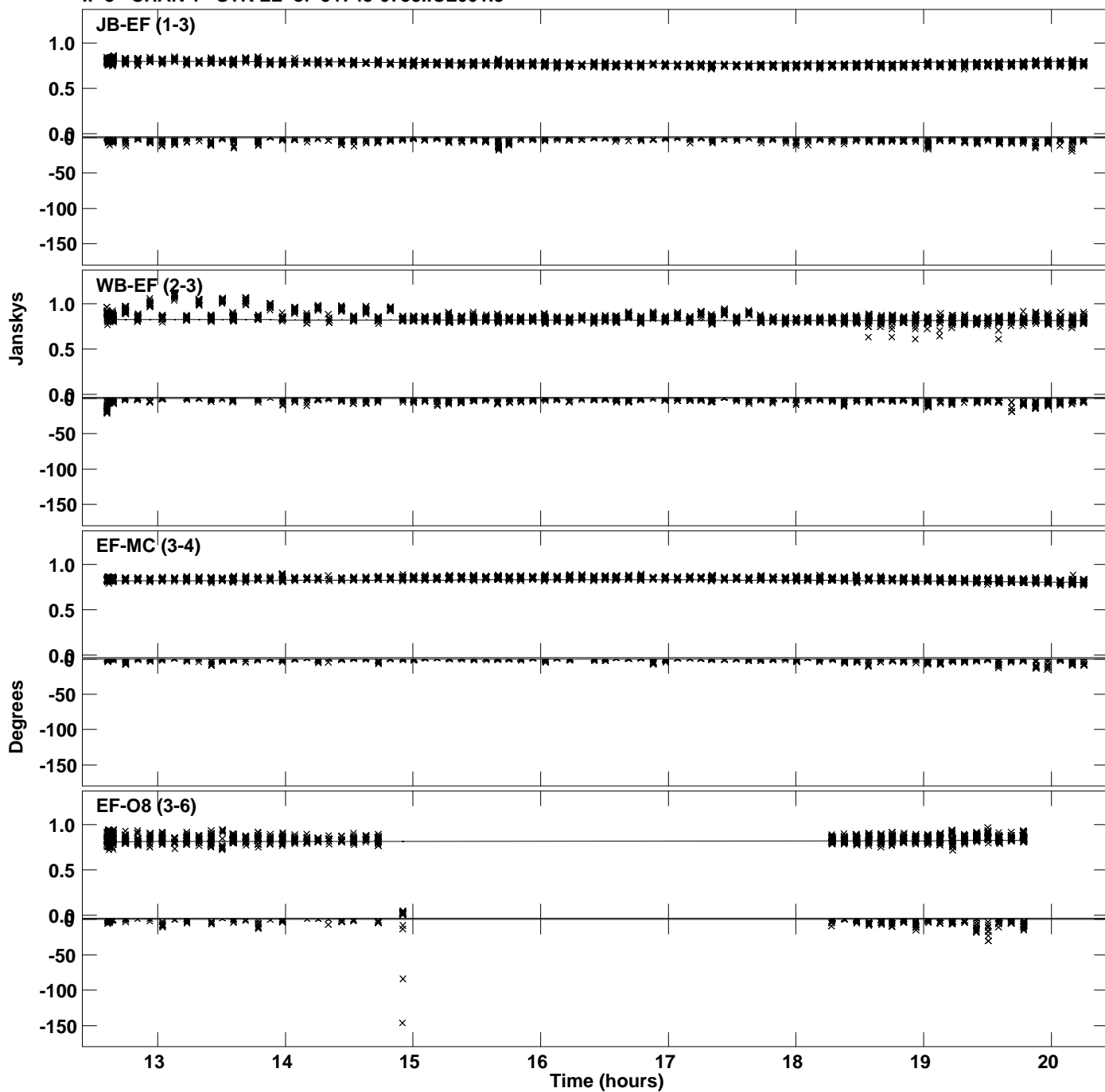
Plot file version 18 created 14-OCT-2021 15:46:48  
Amplitude andPhase vs Time for J1745-0753.MULTI.1 CL # 3  
IF 7 CHAN 1 STK LL of J1745-0753.ICL001.3



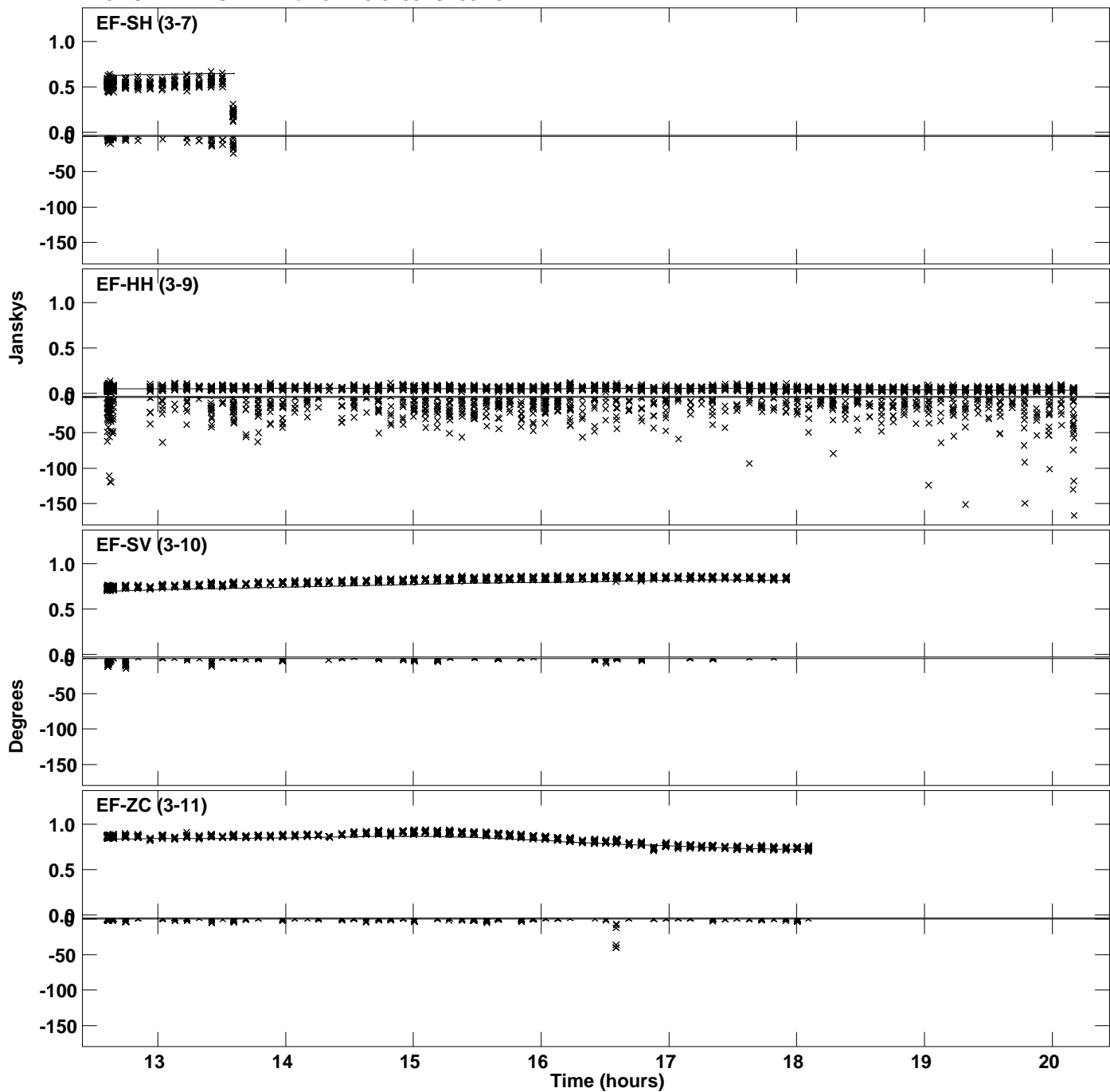
PLot file version 19 created 14-OCT-2021 15:46:48  
Amplitude andPhase vs Time for J1745-0753.MULTI.1 CL # 3  
IF 7 CHAN 1 STK LL of J1745-0753.ICL001.3



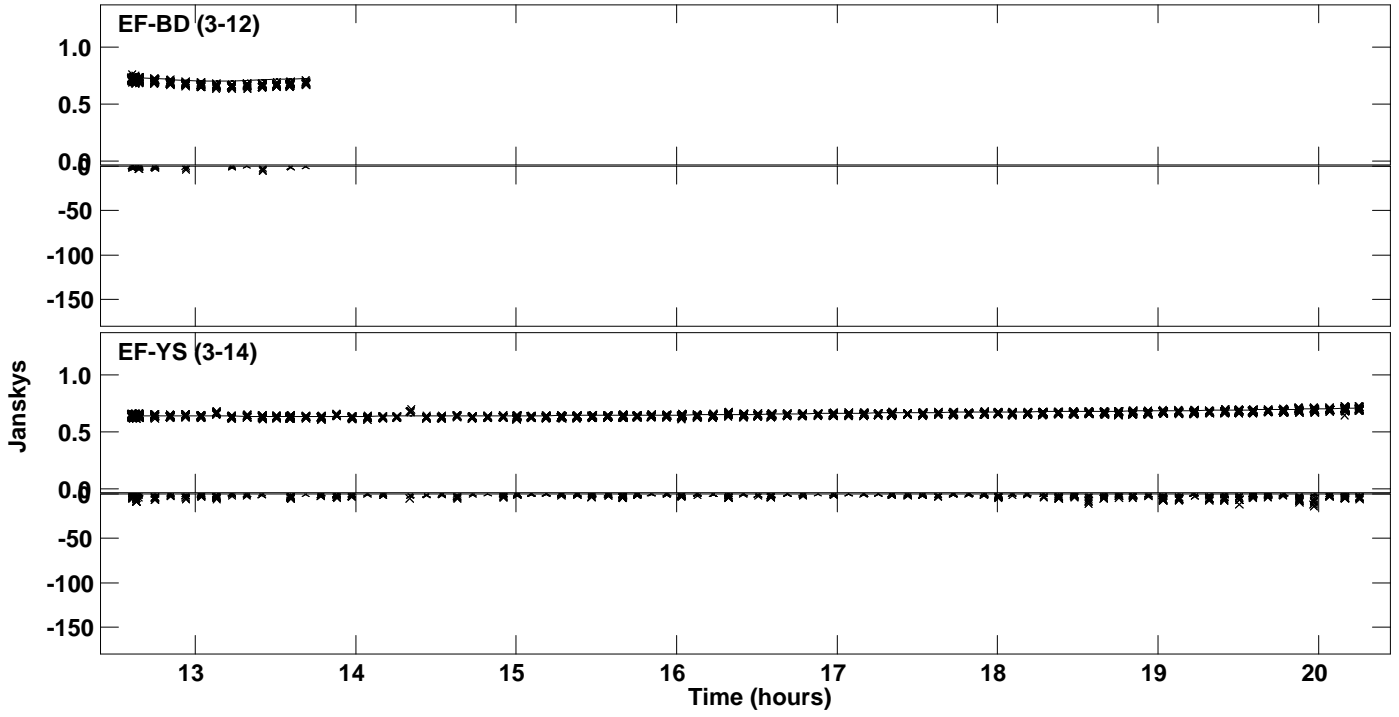
PLot file version 20 created 14-OCT-2021 15:46:49  
Amplitude andPhase vs Time for J1745-0753.MULTI.1 CL # 3  
IF 8 CHAN 1 STK LL of J1745-0753.ICL001.3



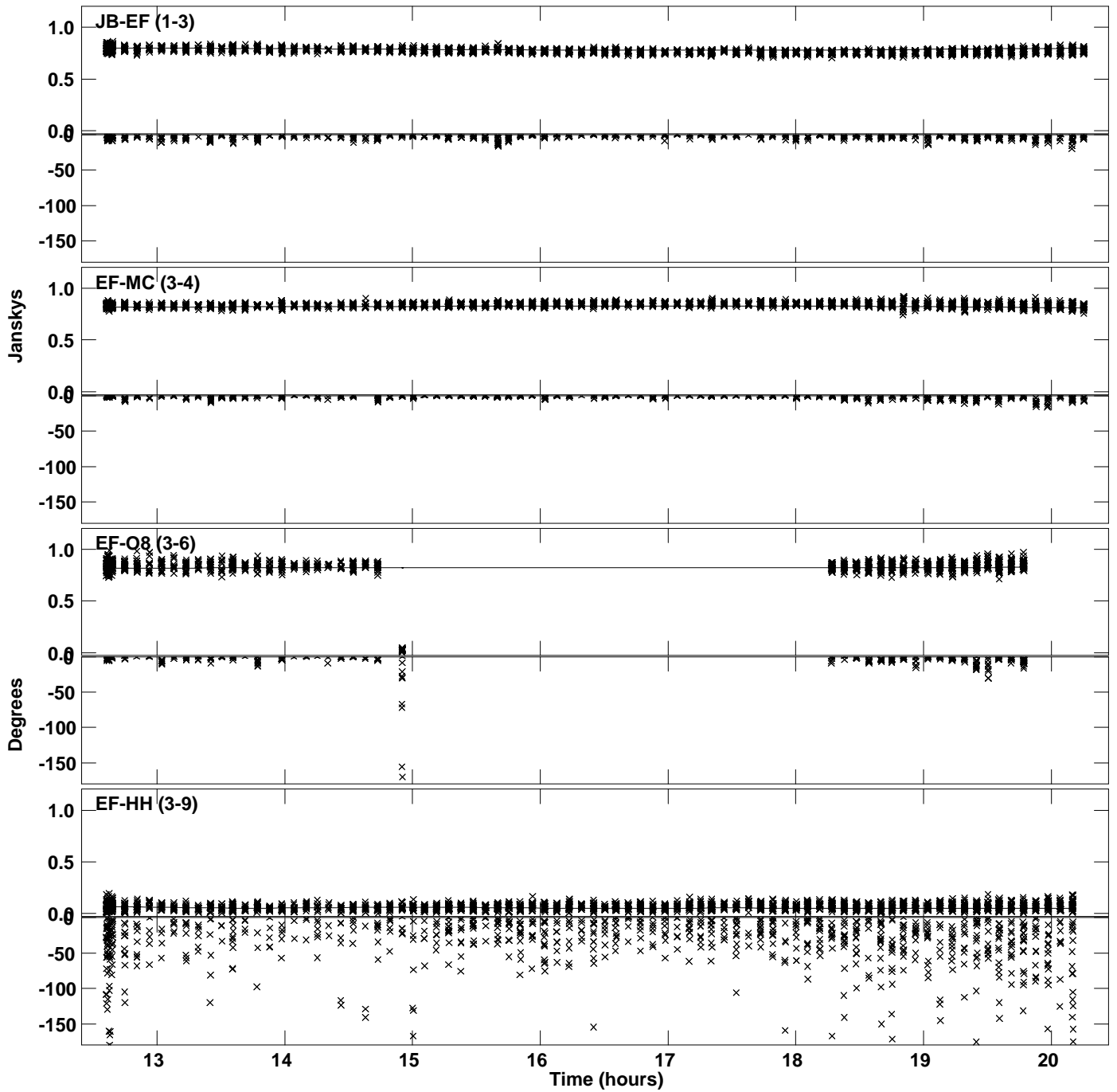
Plot file version 21 created 14-OCT-2021 15:46:49  
Amplitude andPhase vs Time for J1745-0753.MULTI.1 CL # 3  
IF 8 CHAN 1 STK LL of J1745-0753.ICL001.3



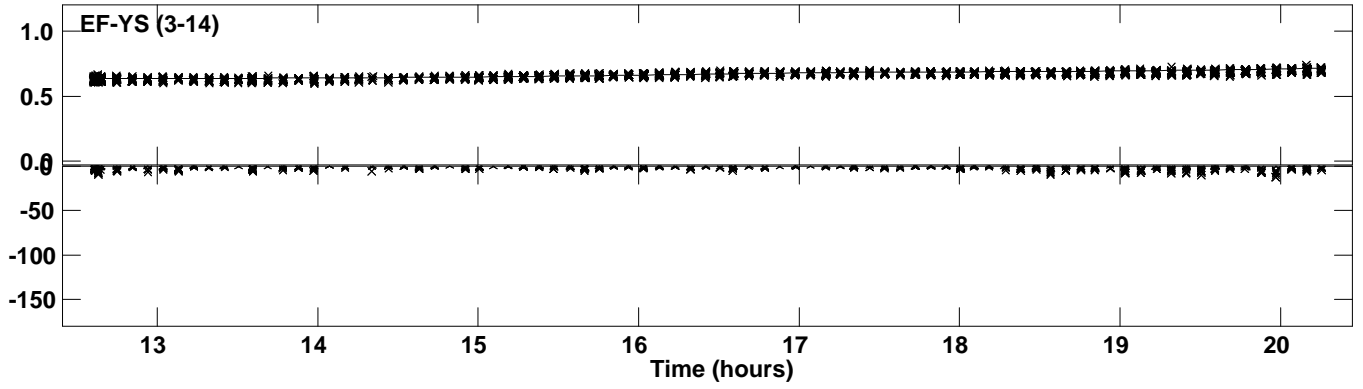
PLot file version 22 created 14-OCT-2021 15:46:49  
Amplitude andPhase vs Time for J1745-0753.MULTI.1 CL # 3  
IF 8 CHAN 1 STK LL of J1745-0753.ICL001.3



Plot file version 23 created 14-OCT-2021 15:46:49  
Amplitude and Phase vs Time for J1745-0753.MULTI.1 CL # 3  
IF 1 CHAN 1 STK RR of J1745-0753.ICL001.3

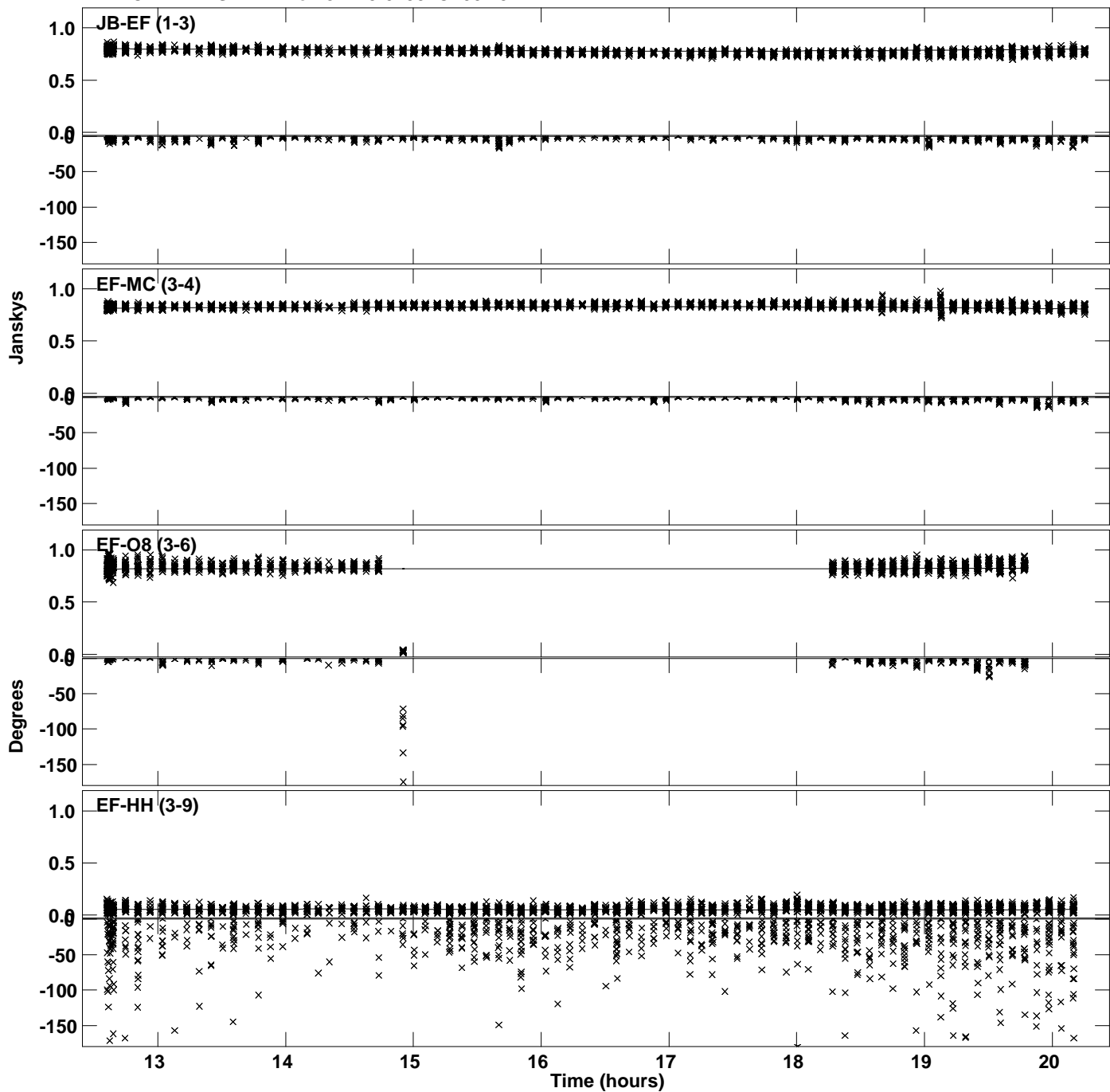


PLot file version 24 created 14-OCT-2021 15:46:49  
Amplitude andPhase vs Time for J1745-0753.MULTI.1 CL # 3  
IF 1 CHAN 1 STK RR of J1745-0753.ICL001.3

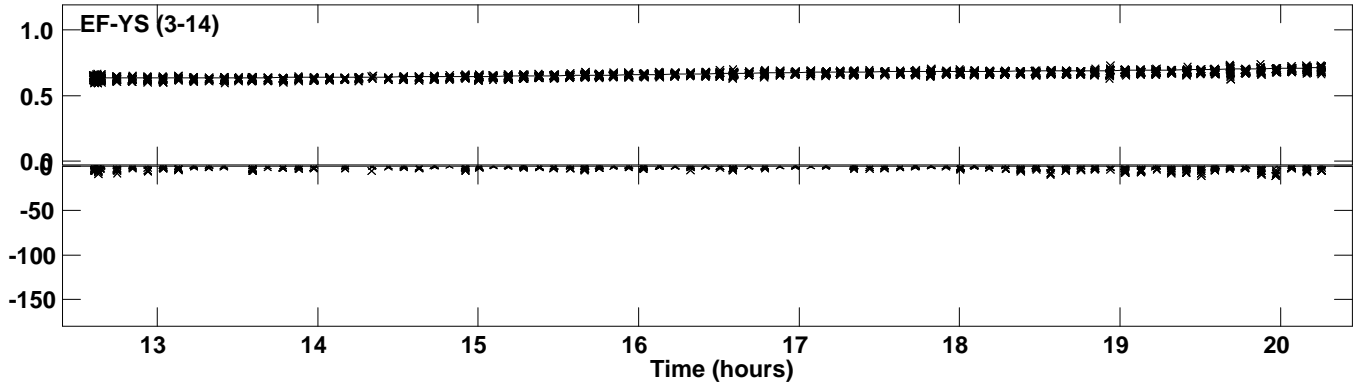




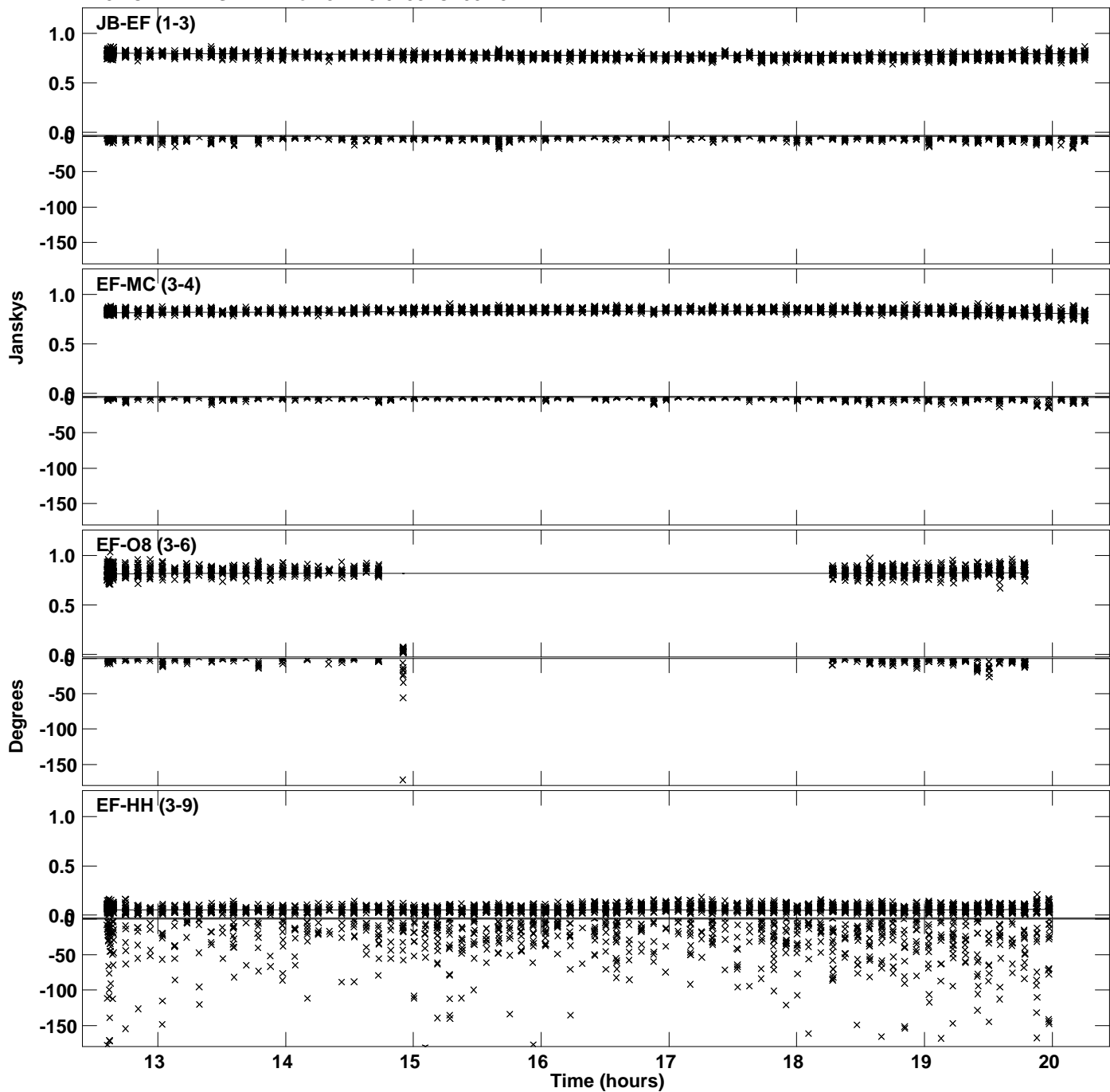
Plot file version 25 created 14-OCT-2021 15:46:49  
Amplitude and Phase vs Time for J1745-0753.MULTI.1 CL # 3  
IF 2 CHAN 1 STK RR of J1745-0753.ICL001.3



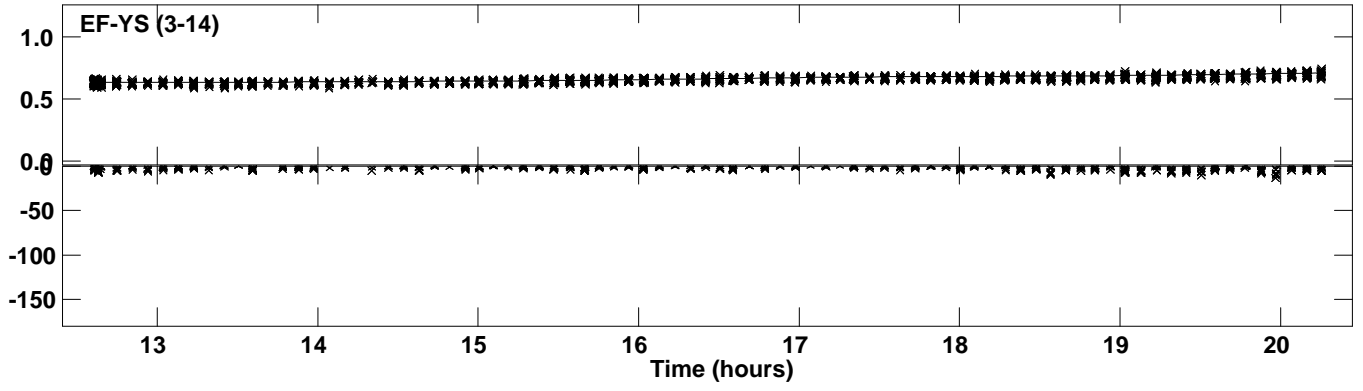
PLot file version 26 created 14-OCT-2021 15:46:49  
Amplitude andPhase vs Time for J1745-0753.MULTI.1 CL # 3  
IF 2 CHAN 1 STK RR of J1745-0753.ICL001.3



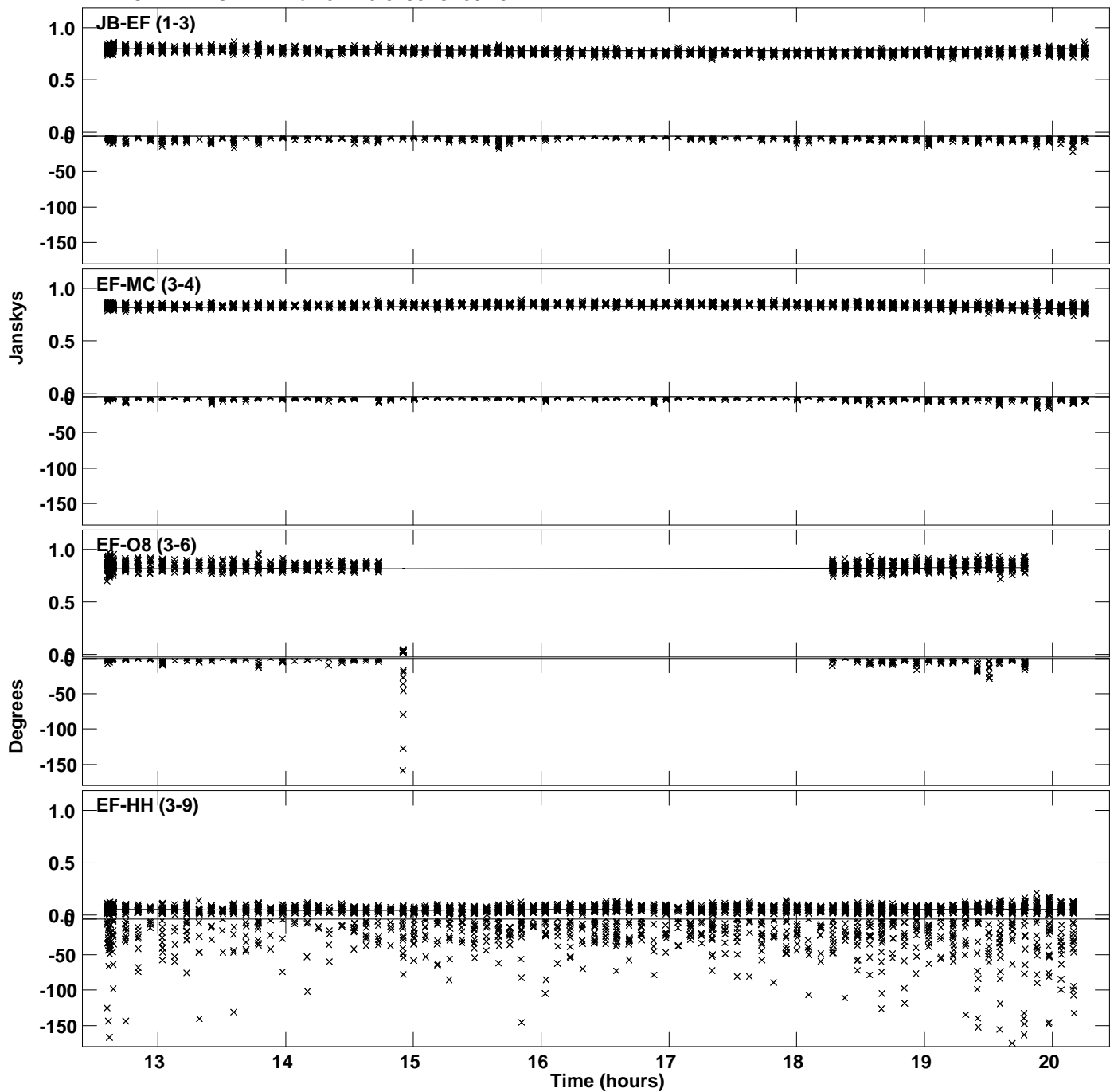
Plot file version 27 created 14-OCT-2021 15:46:50  
Amplitude and Phase vs Time for J1745-0753.MULTI.1 CL # 3  
IF 3 CHAN 1 STK RR of J1745-0753.ICL001.3



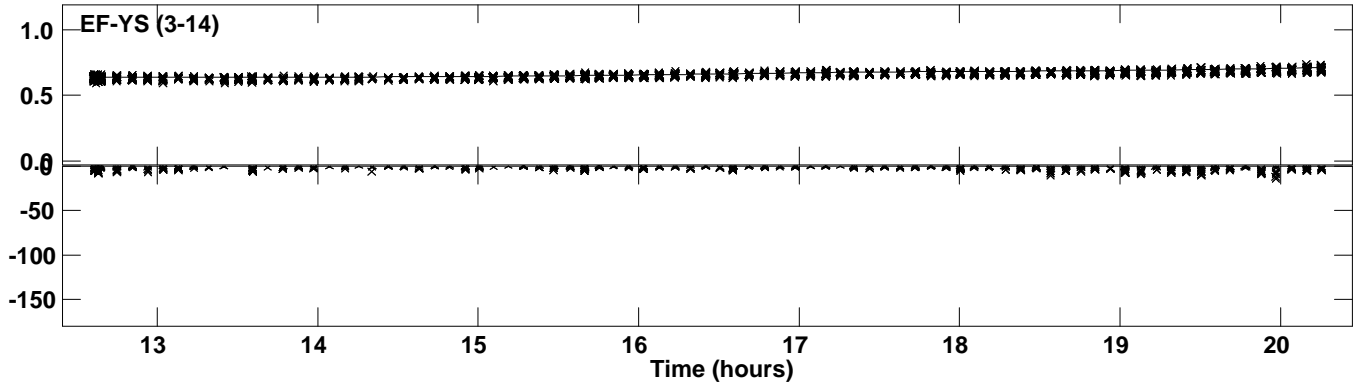
PLot file version 28 created 14-OCT-2021 15:46:50  
Amplitude andPhase vs Time for J1745-0753.MULTI.1 CL # 3  
IF 3 CHAN 1 STK RR of J1745-0753.ICL001.3



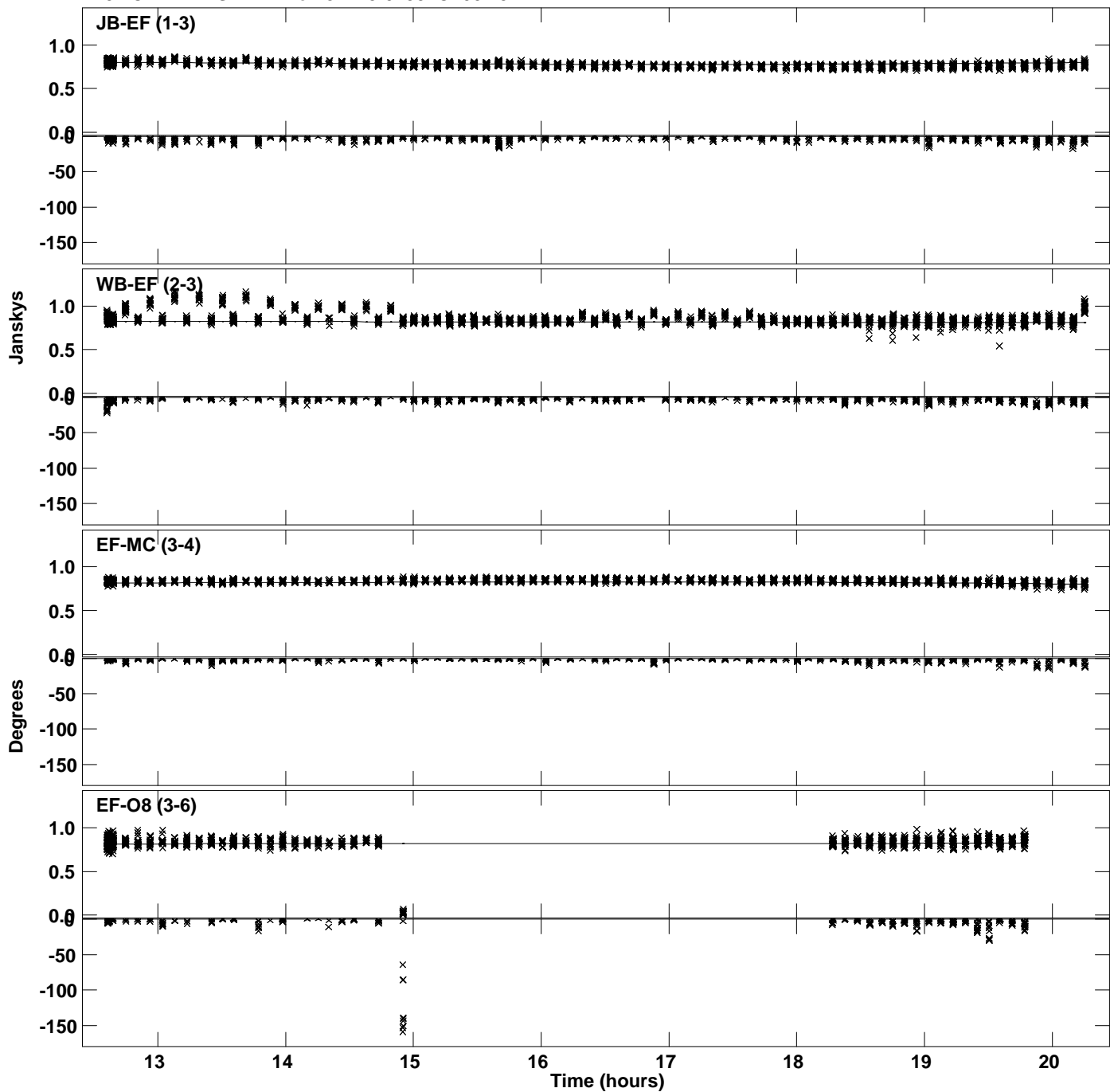
Plot file version 29 created 14-OCT-2021 15:46:50  
Amplitude and Phase vs Time for J1745-0753.MULTI.1 CL # 3  
IF 4 CHAN 1 STK RR of J1745-0753.ICL001.3



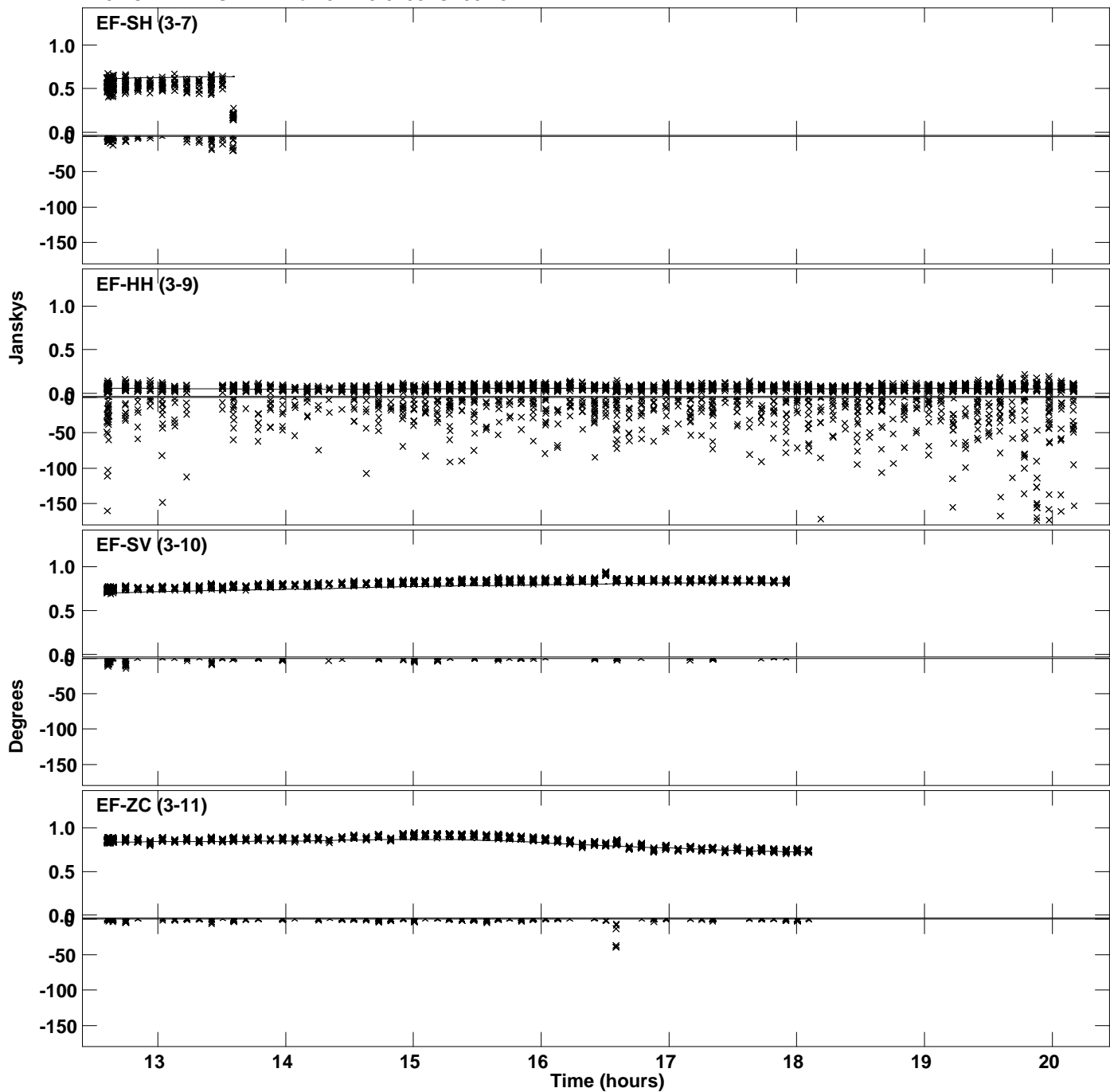
PLot file version 30 created 14-OCT-2021 15:46:50  
Amplitude andPhase vs Time for J1745-0753.MULTI.1 CL # 3  
IF 4 CHAN 1 STK RR of J1745-0753.ICL001.3



Plot file version 31 created 14-OCT-2021 15:46:50  
Amplitude and Phase vs Time for J1745-0753.MULTI.1 CL # 3  
IF 5 CHAN 1 STK RR of J1745-0753.ICL001.3

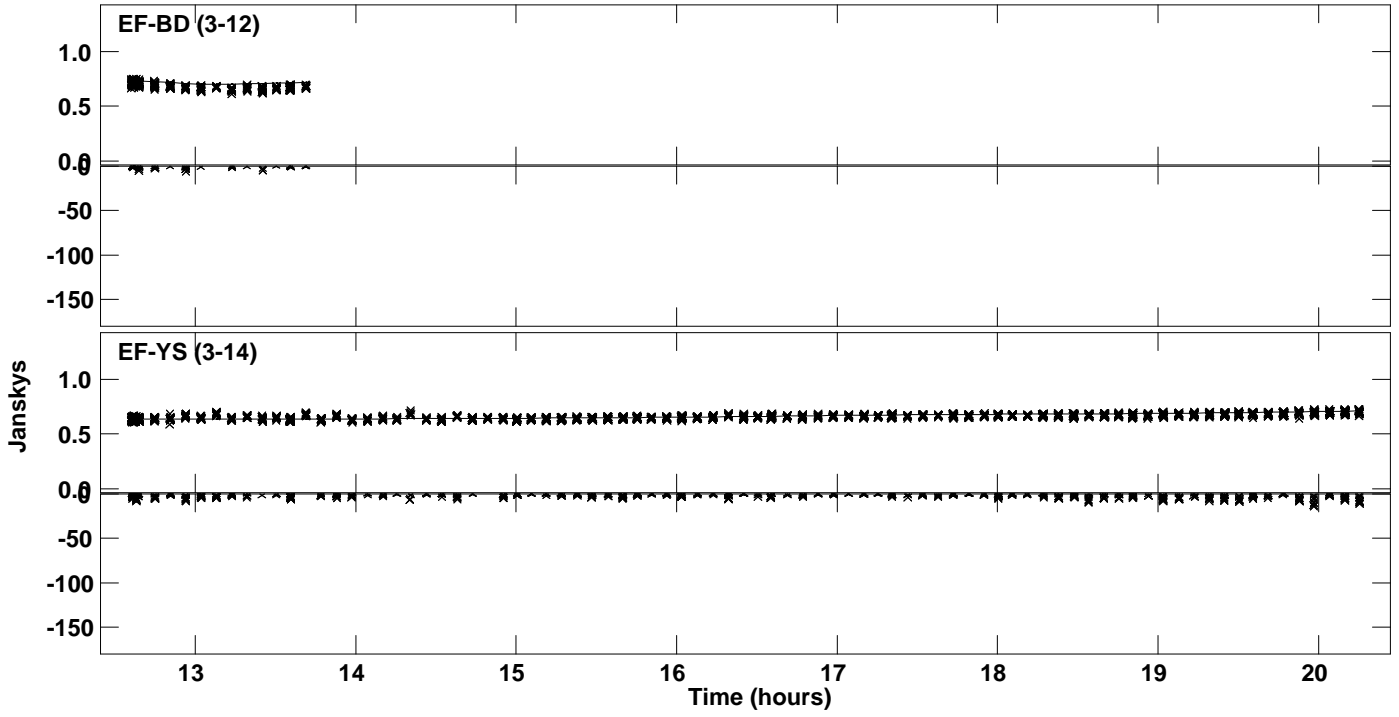


Plot file version 32 created 14-OCT-2021 15:46:50  
Amplitude and Phase vs Time for J1745-0753.MULTI.1 CL # 3  
IF 5 CHAN 1 STK RR of J1745-0753.ICL001.3

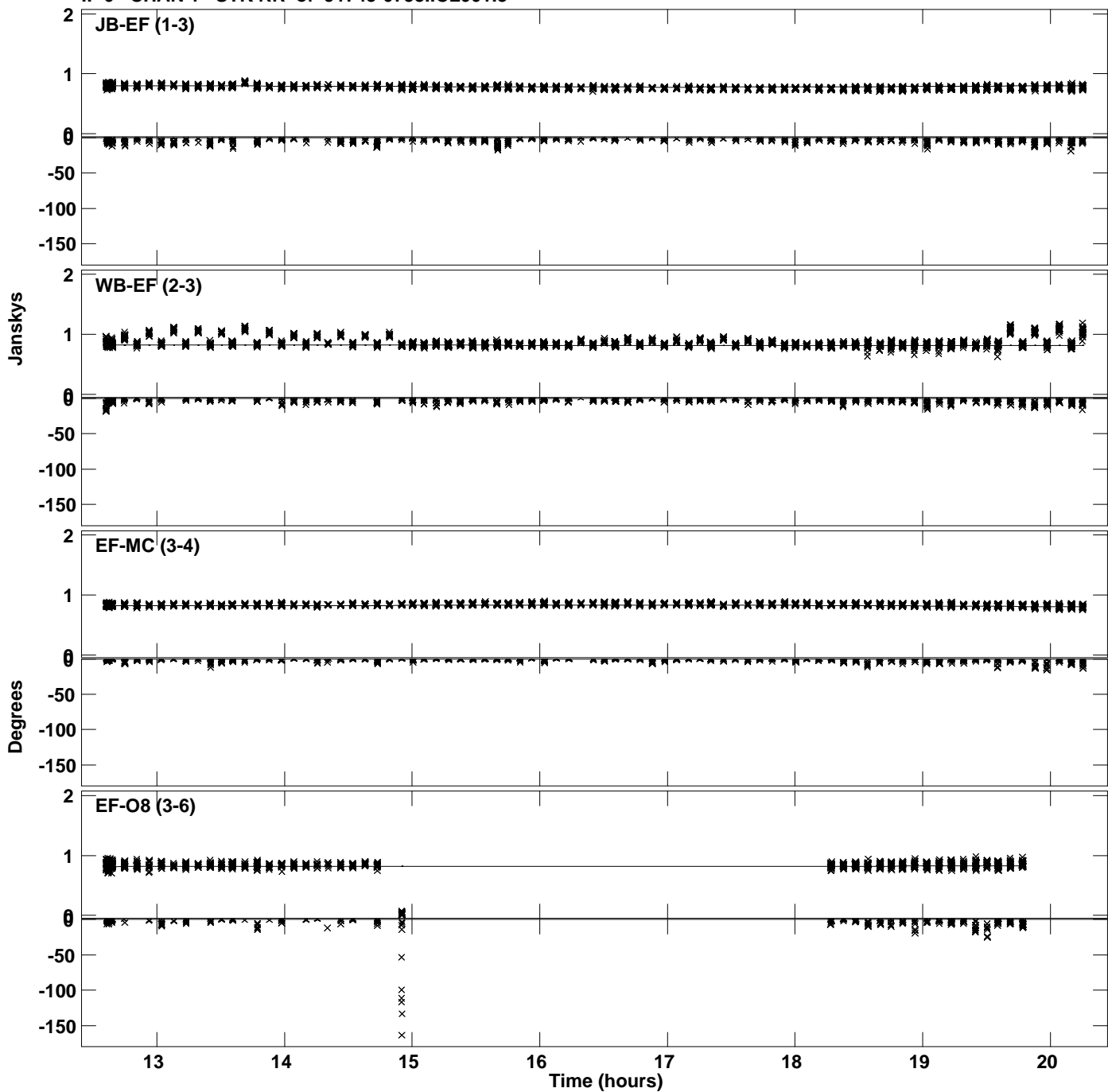




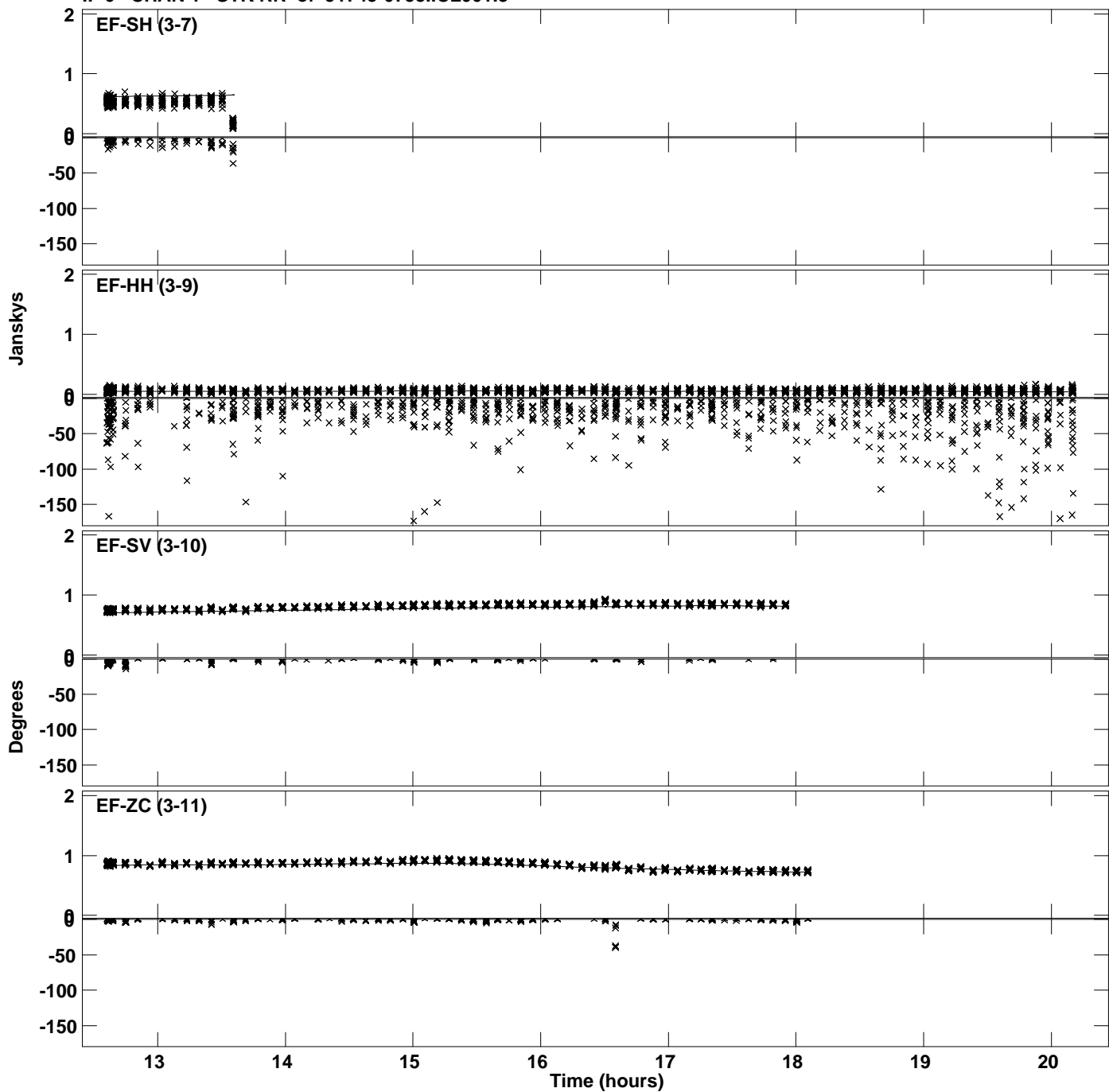
PLot file version 33 created 14-OCT-2021 15:46:50  
Amplitude andPhase vs Time for J1745-0753.MULTI.1 CL # 3  
IF 5 CHAN 1 STK RR of J1745-0753.ICL001.3



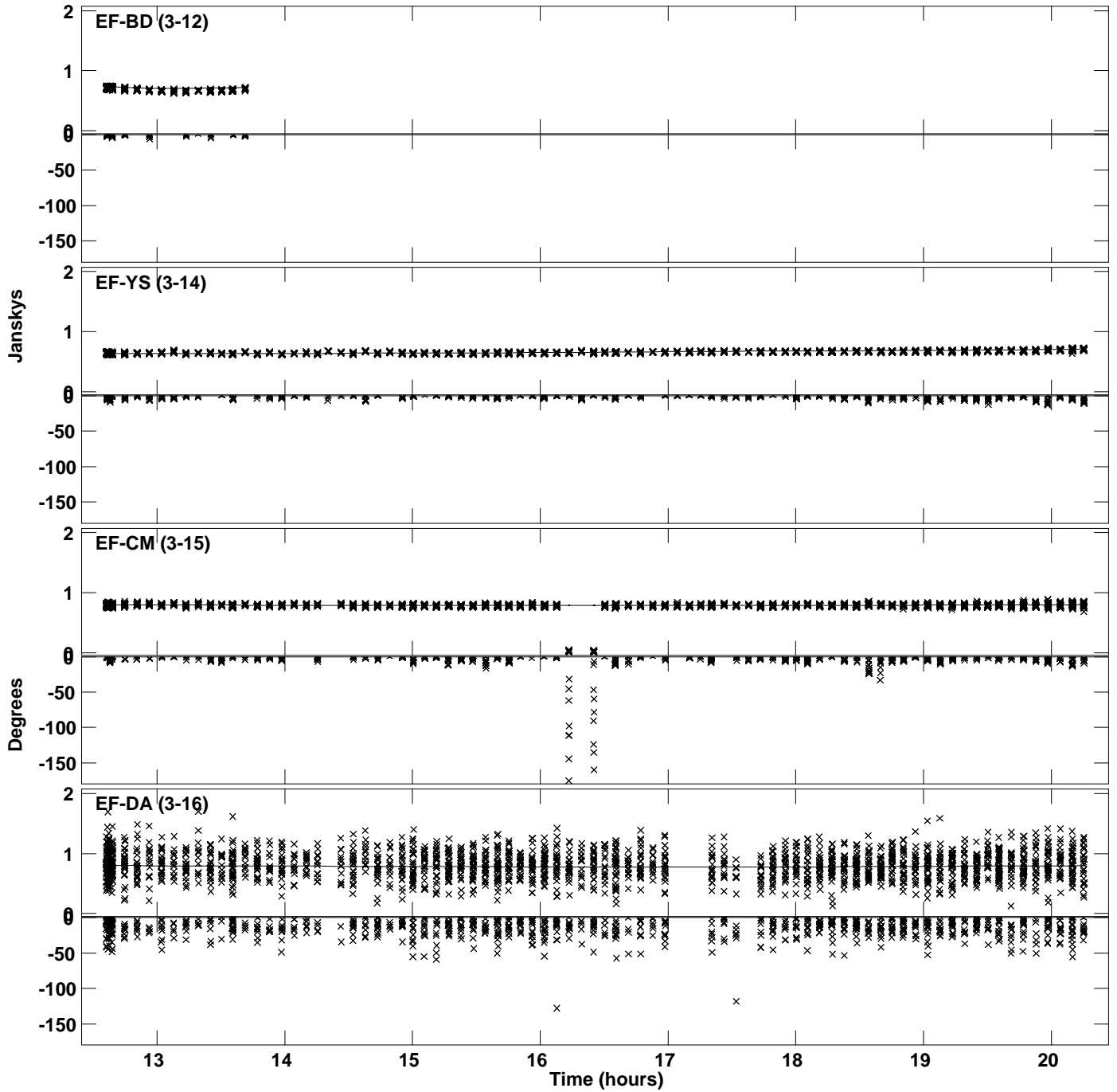
PLot file version 34 created 14-OCT-2021 15:46:51  
Amplitude andPhase vs Time for J1745-0753.MULTI.1 CL # 3  
IF 6 CHAN 1 STK RR of J1745-0753.ICL001.3



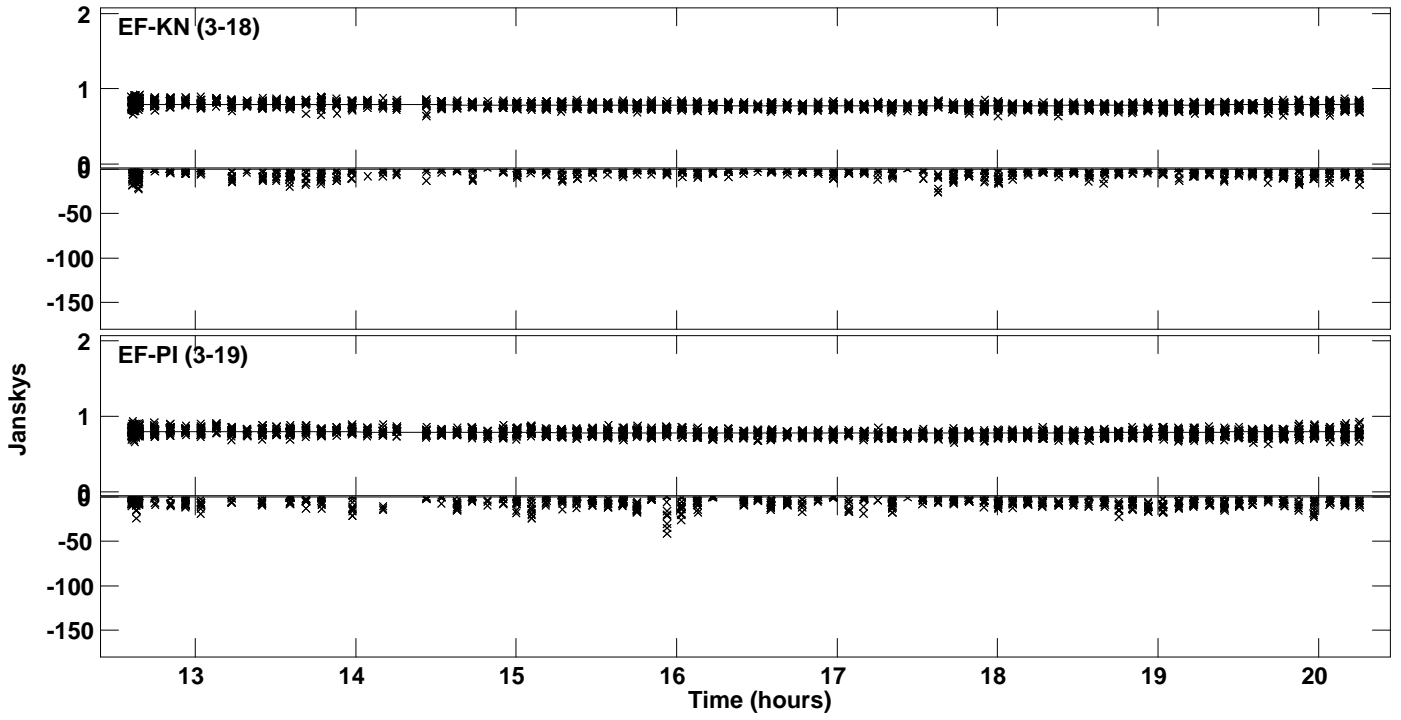
Plot file version 35 created 14-OCT-2021 15:46:51  
Amplitude and Phase vs Time for J1745-0753.MULTI.1 CL # 3  
IF 6 CHAN 1 STK RR of J1745-0753.ICL001.3



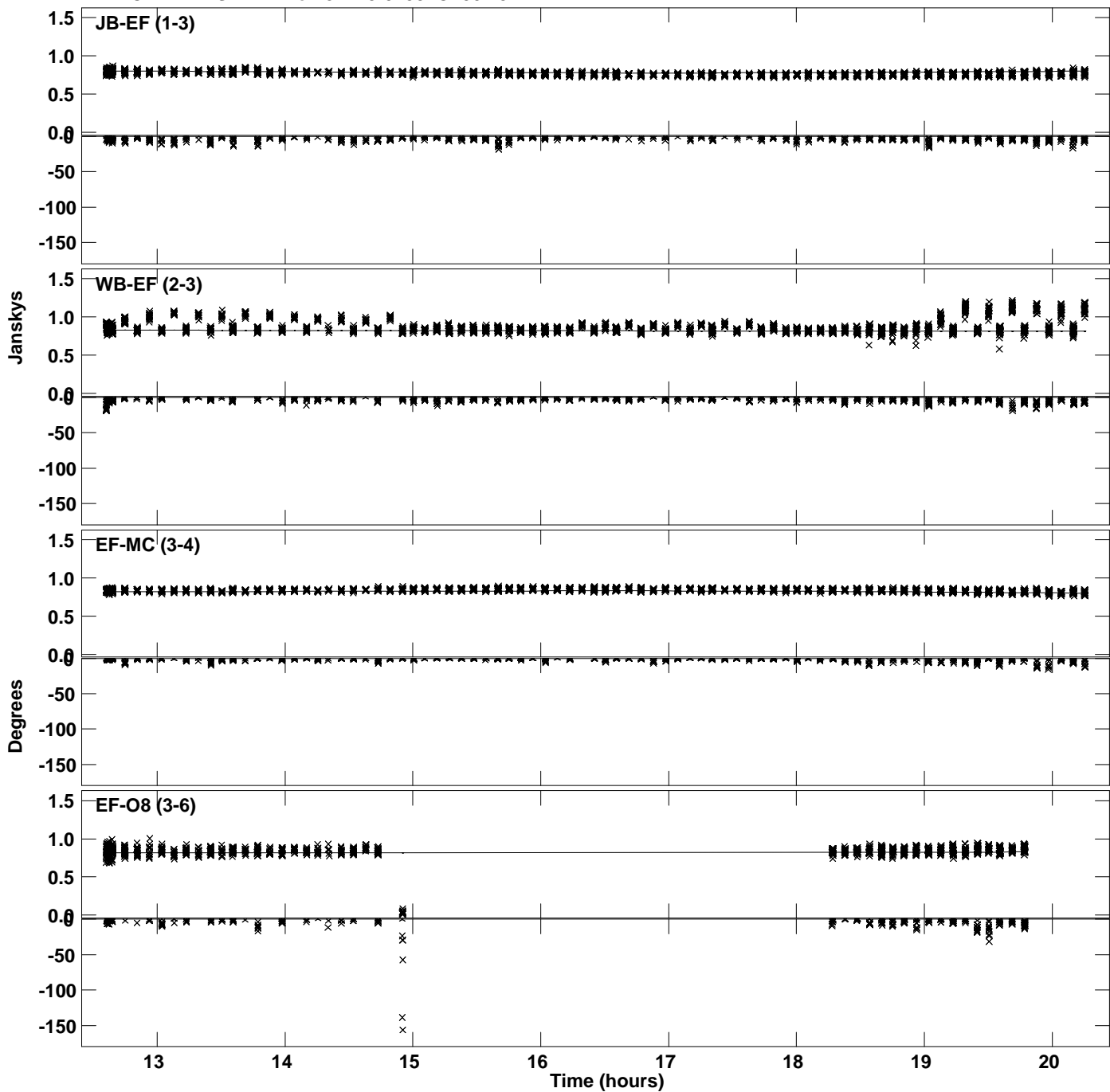
Plot file version 36 created 14-OCT-2021 15:46:51  
Amplitude and Phase vs Time for J1745-0753.MULTI.1 CL # 3  
IF 6 CHAN 1 STK RR of J1745-0753.ICL001.3



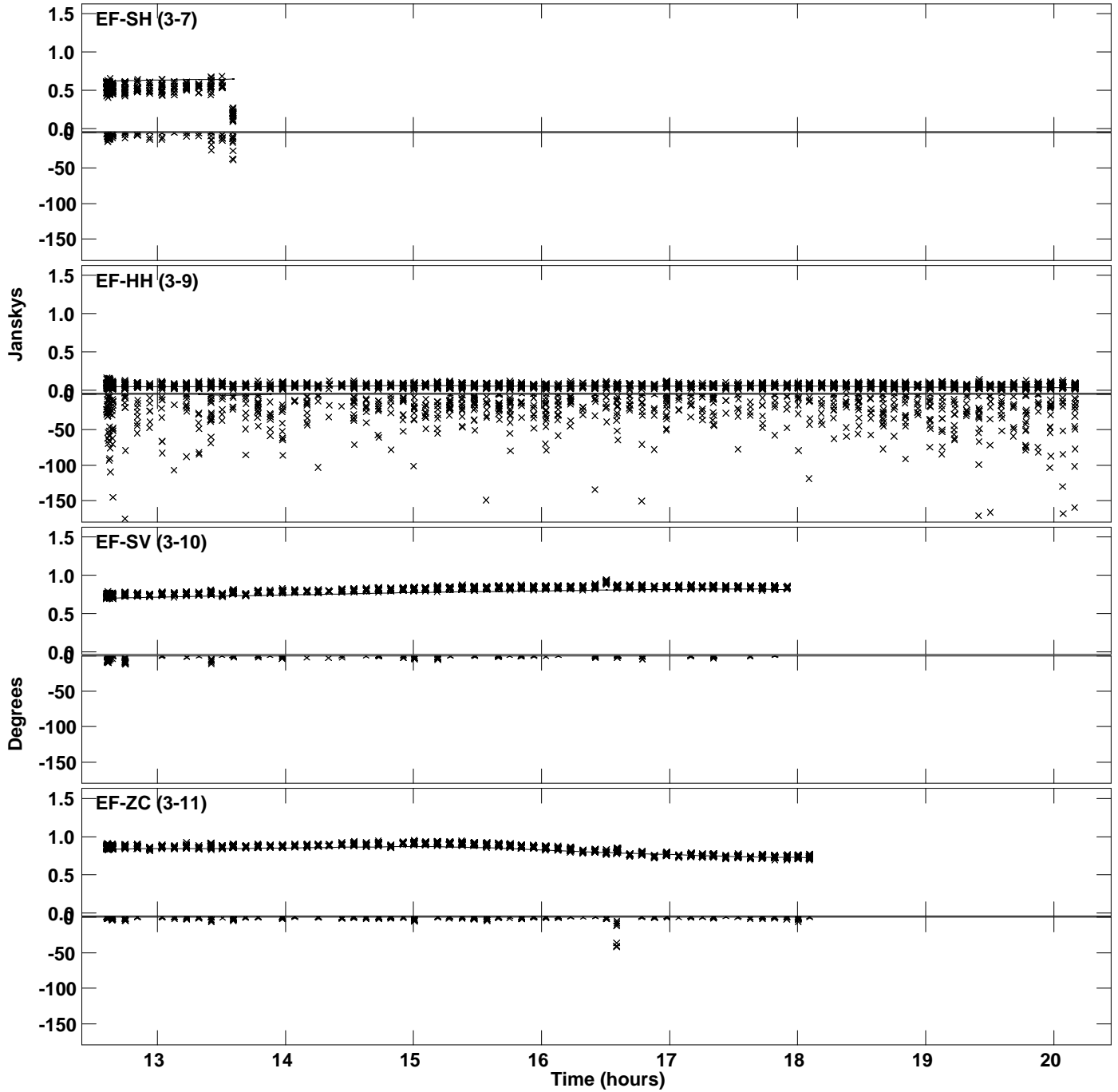
PLot file version 37 created 14-OCT-2021 15:46:51  
Amplitude andPhase vs Time for J1745-0753.MULTI.1 CL # 3  
IF 6 CHAN 1 STK RR of J1745-0753.ICL001.3



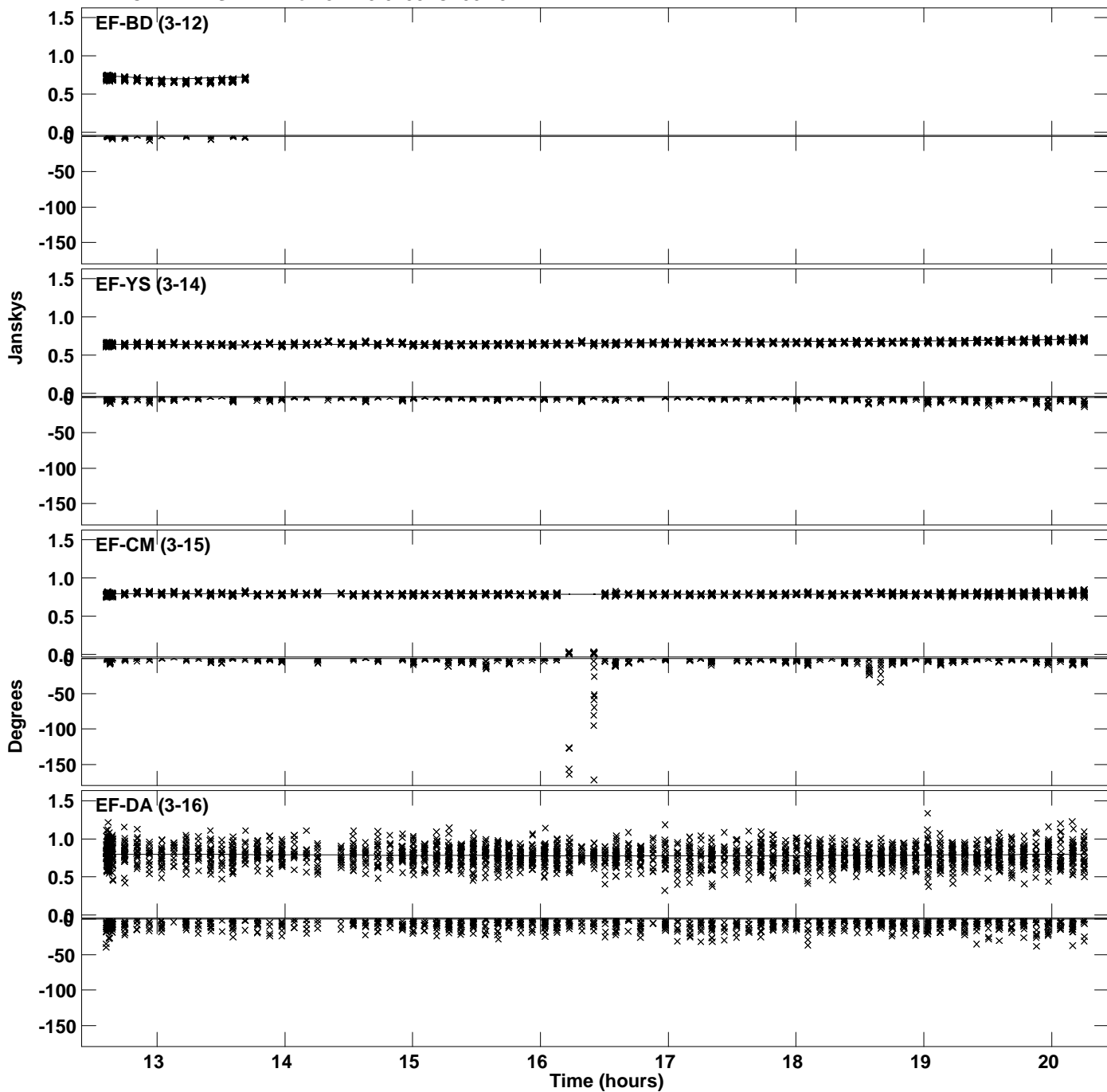
PLot file version 38 created 14-OCT-2021 15:46:51  
Amplitude andPhase vs Time for J1745-0753.MULTI.1 CL # 3  
IF 7 CHAN 1 STK RR of J1745-0753.ICL001.3



PLot file version 39 created 14-OCT-2021 15:46:51  
Amplitude andPhase vs Time for J1745-0753.MULTI.1 CL # 3  
IF 7 CHAN 1 STK RR of J1745-0753.ICL001.3

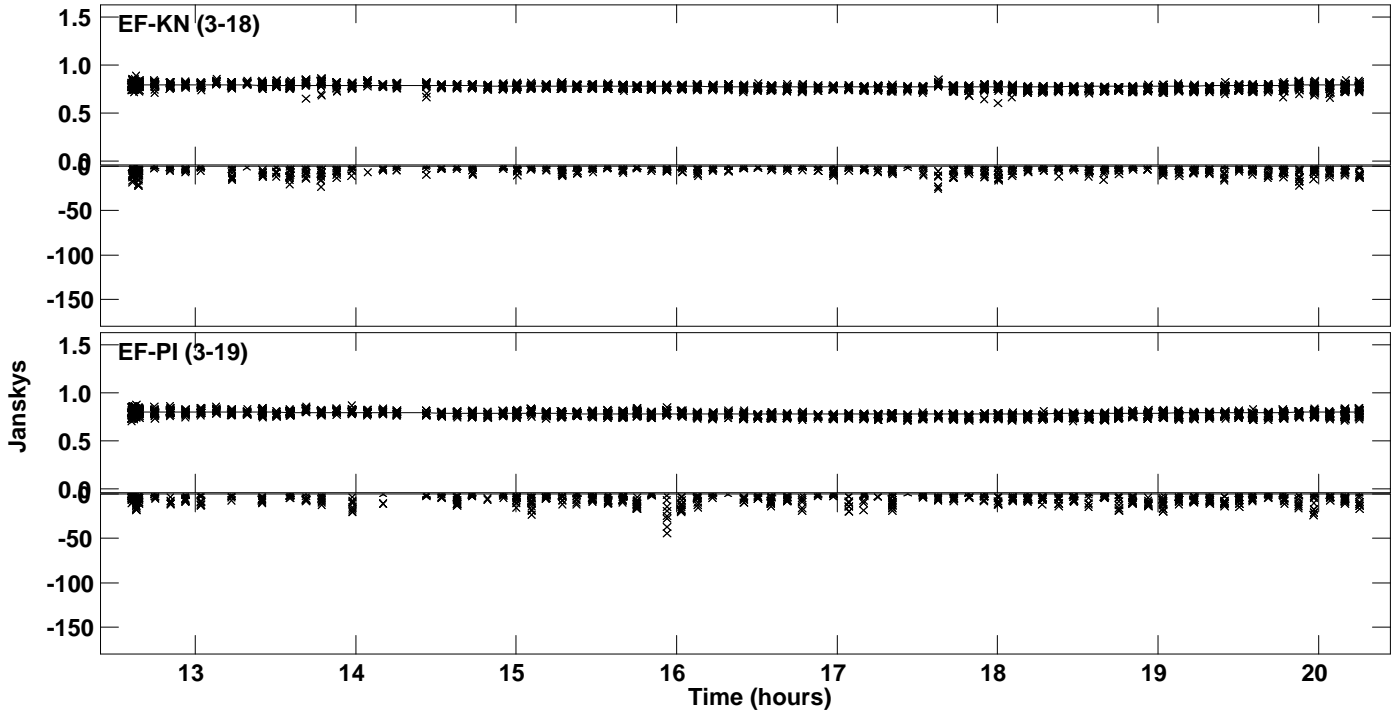


Plot file version 40 created 14-OCT-2021 15:46:51  
Amplitude andPhase vs Time for J1745-0753.MULTI.1 CL # 3  
IF 7 CHAN 1 STK RR of J1745-0753.ICL001.3

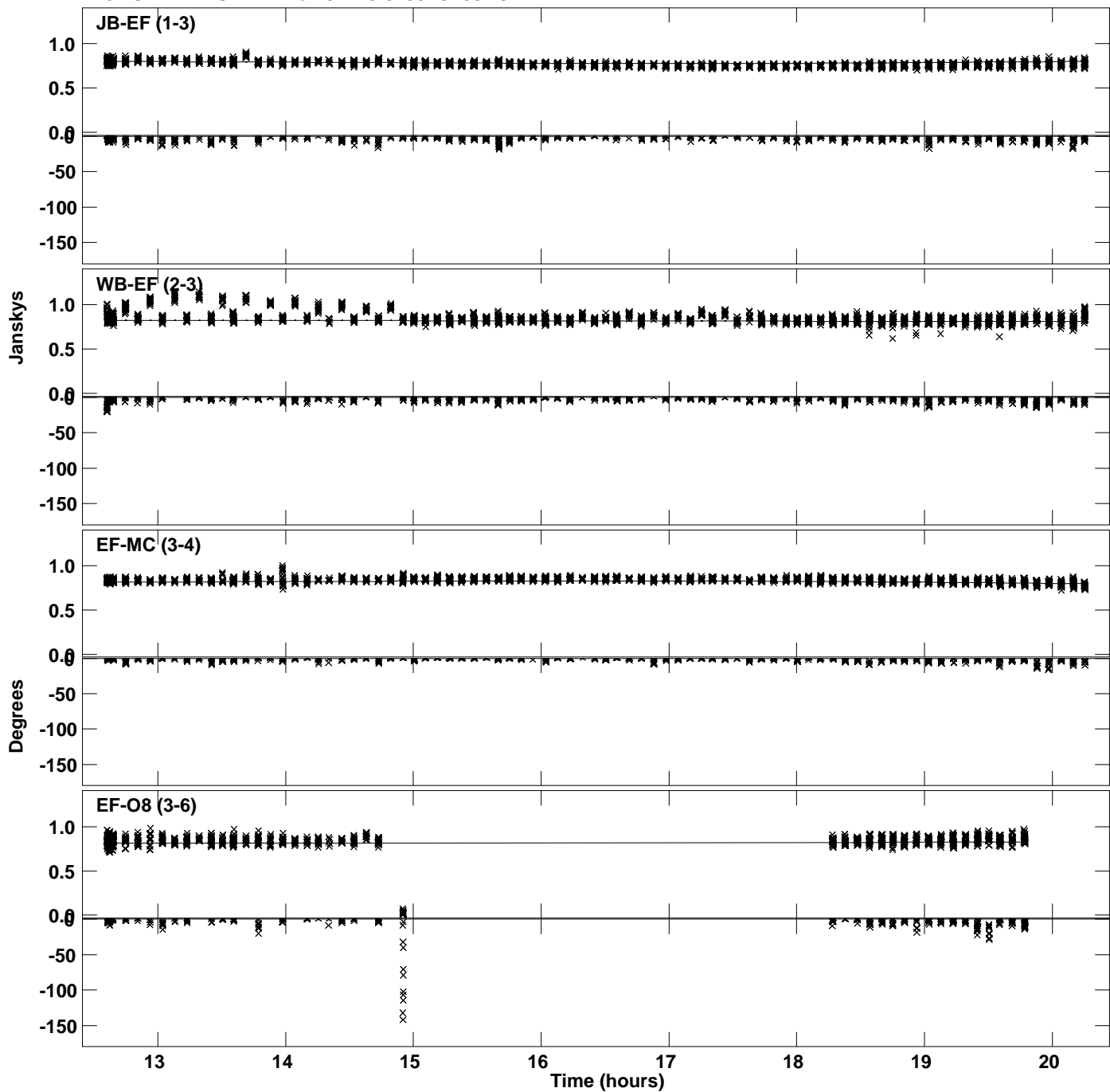




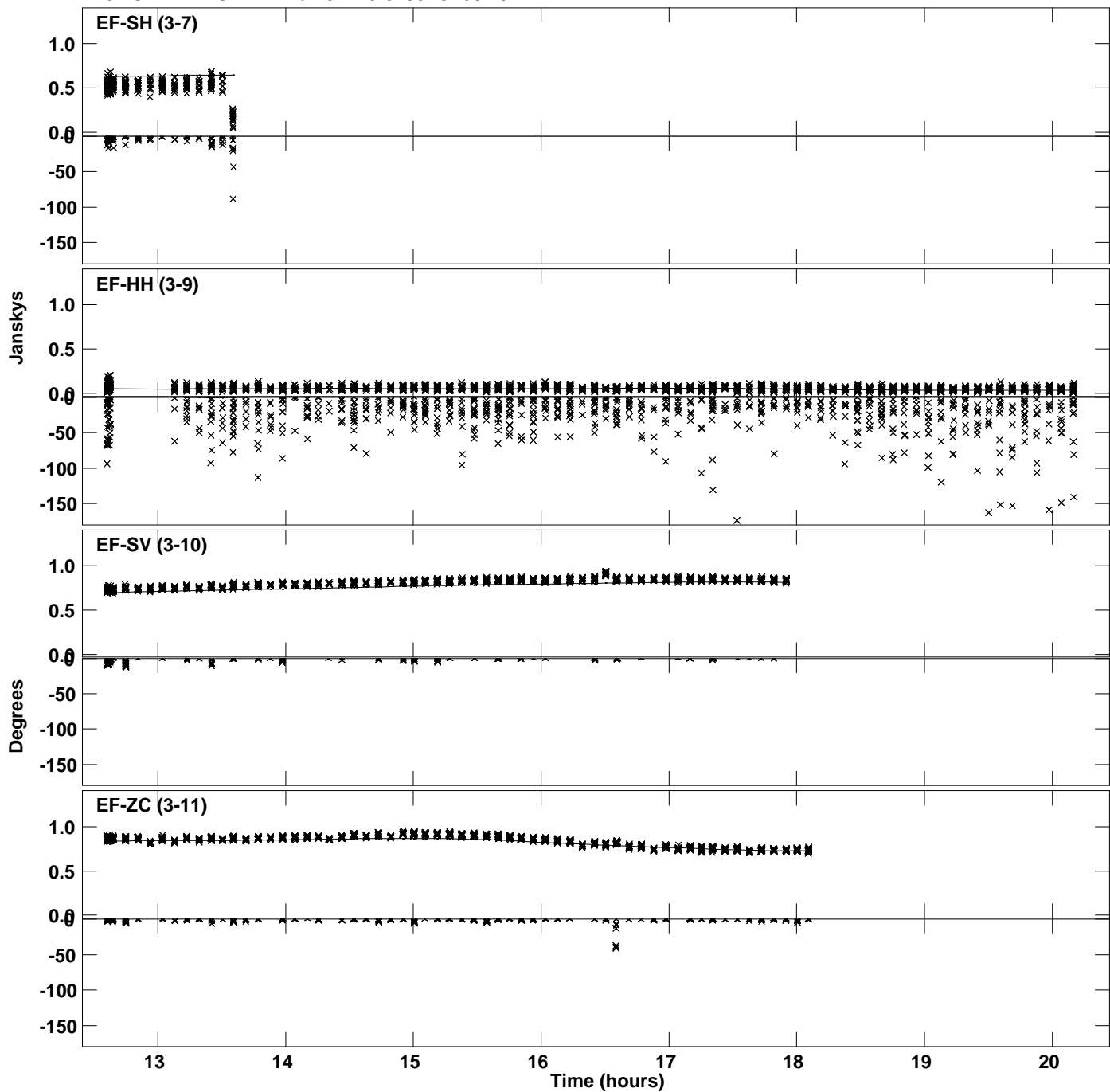
PLot file version 41 created 14-OCT-2021 15:46:51  
Amplitude andPhase vs Time for J1745-0753.MULTI.1 CL # 3  
IF 7 CHAN 1 STK RR of J1745-0753.ICL001.3



Plot file version 42 created 14-OCT-2021 15:46:52  
Amplitude and Phase vs Time for J1745-0753.MULTI.1 CL # 3  
IF 8 CHAN 1 STK RR of J1745-0753.ICL001.3



PLot file version 43 created 14-OCT-2021 15:46:52  
Amplitude andPhase vs Time for J1745-0753.MULTI.1 CL # 3  
IF 8 CHAN 1 STK RR of J1745-0753.ICL001.3



PLot file version 44 created 14-OCT-2021 15:46:52  
Amplitude andPhase vs Time for J1745-0753.MULTI.1 CL # 3  
IF 8 CHAN 1 STK RR of J1745-0753.ICL001.3

