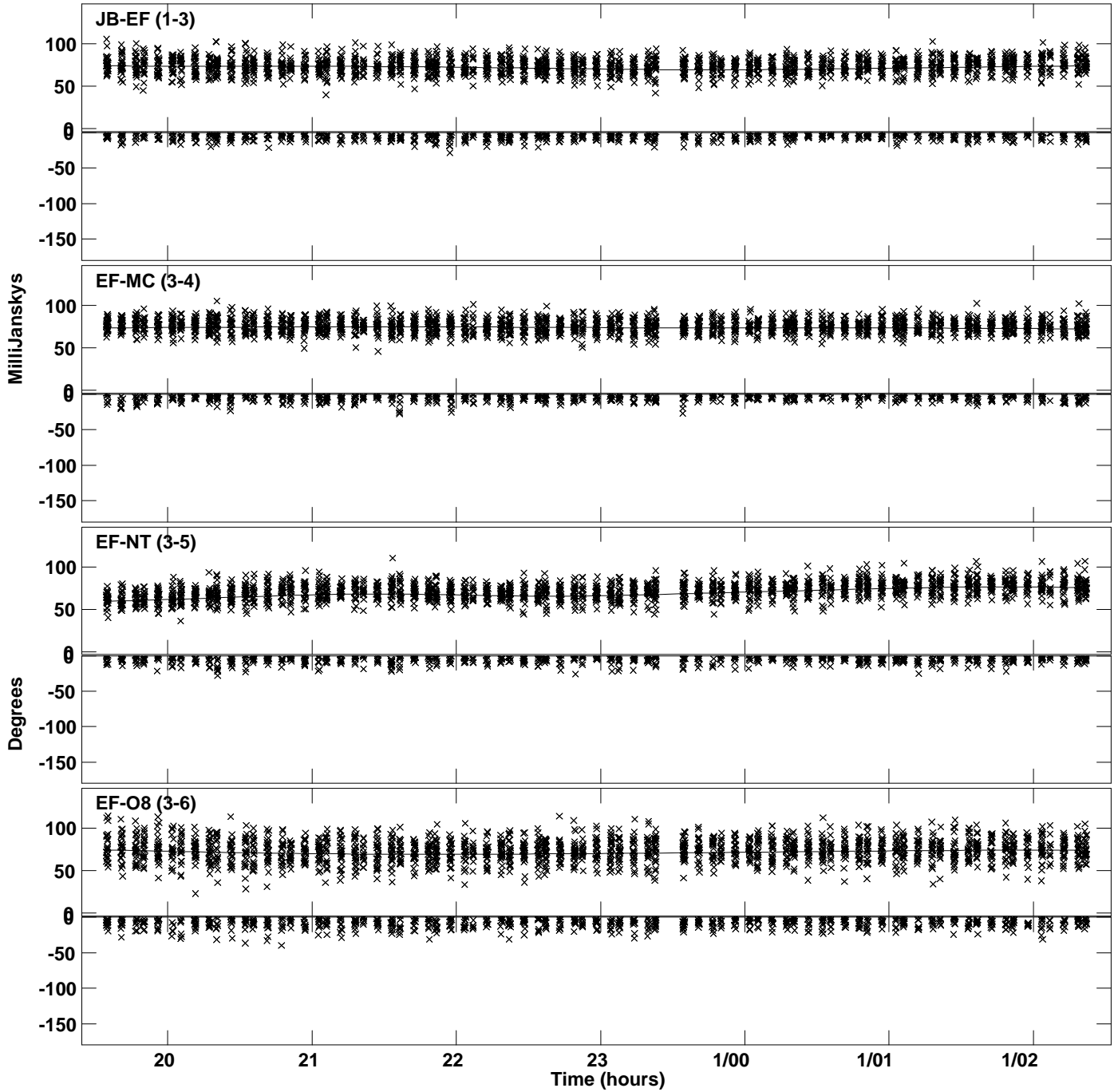
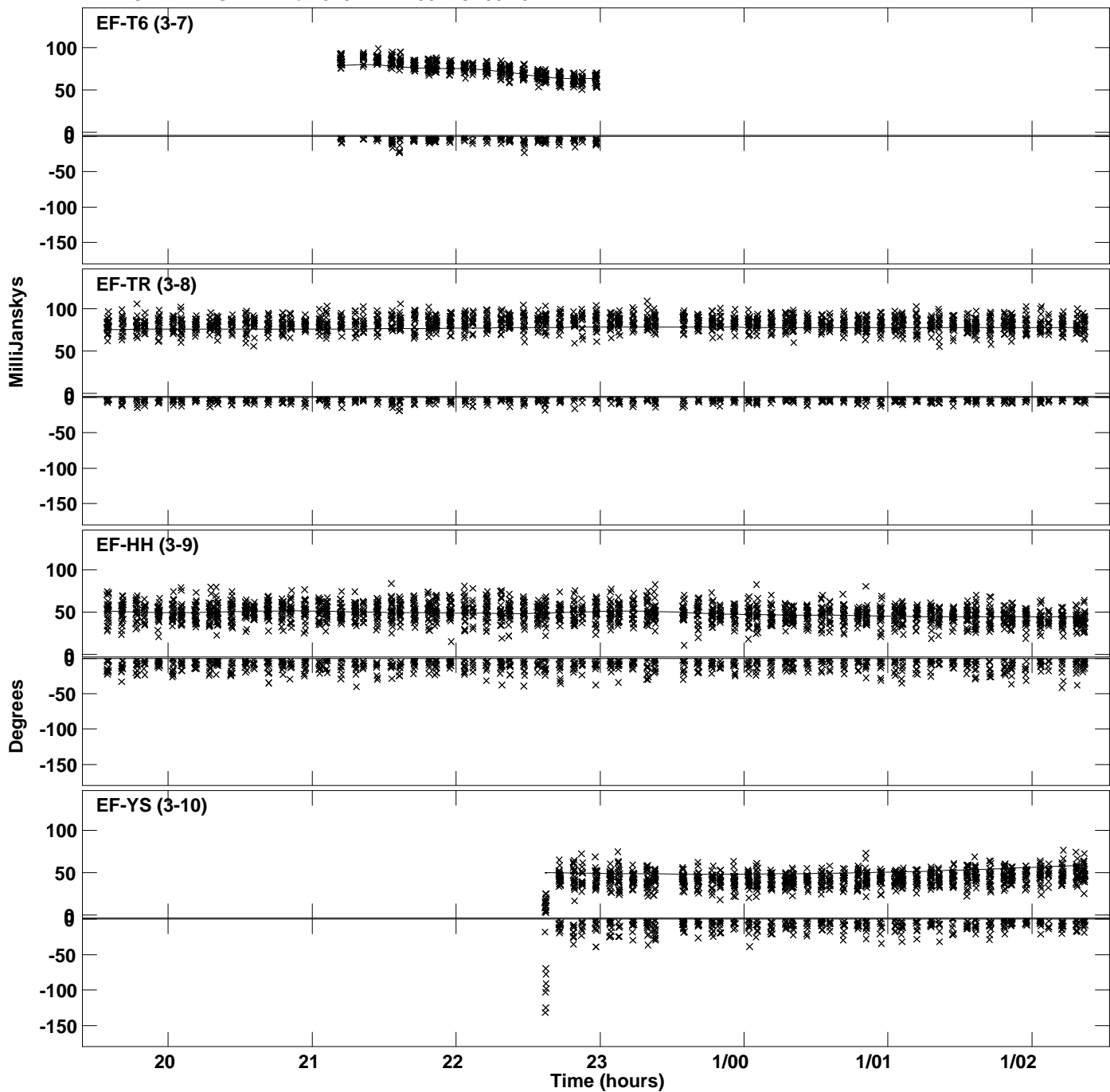


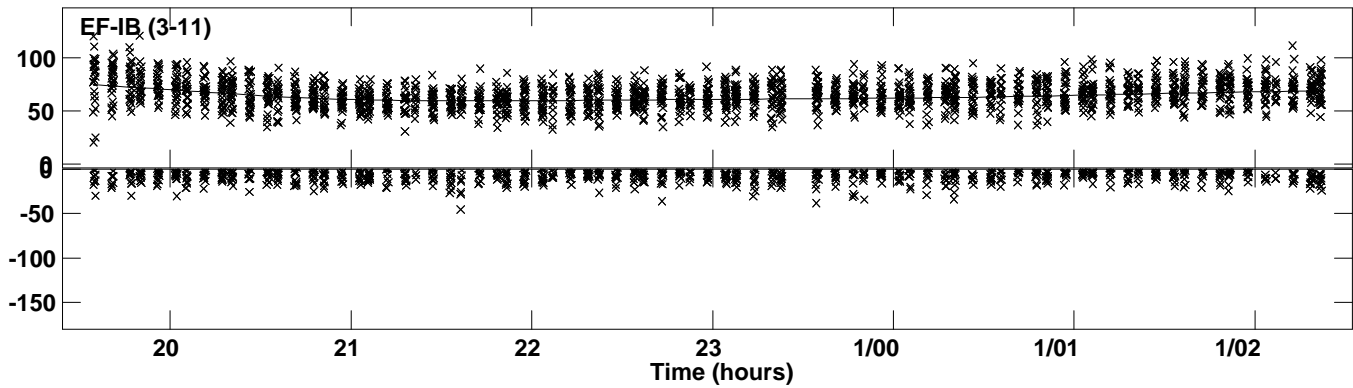
Plot file version 1 created 30-JUN-2023 14:25:27
Amplitude andPhase vs Time for J191142+1952.MULTI.1 CL # 3
IF 1 CHAN 1 STK LL of J191142+1952.ICL001.3



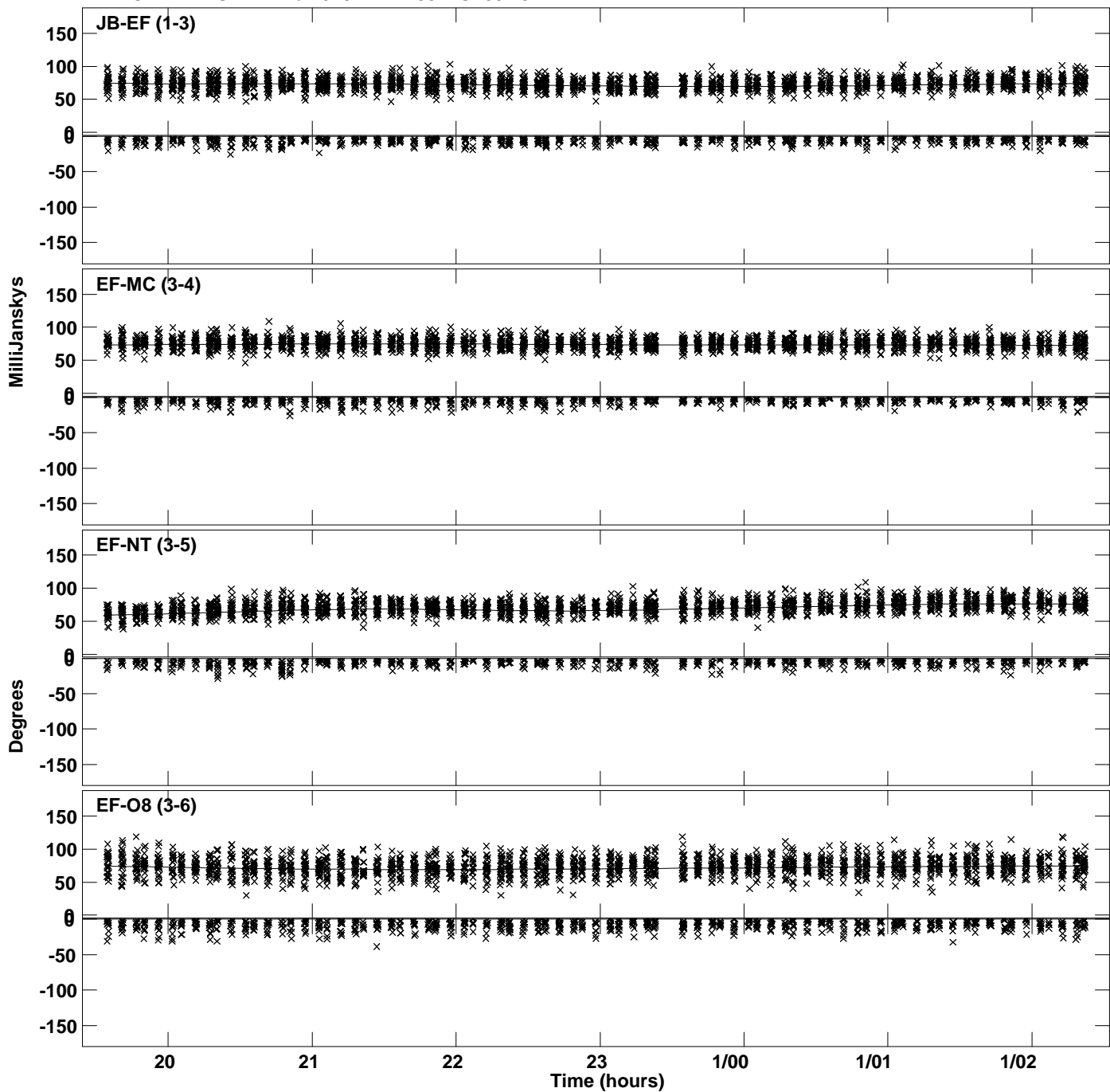
Plot file version 2 created 30-JUN-2023 14:25:27
Amplitude andPhase vs Time for J191142+1952.MULTI.1 CL # 3
IF 1 CHAN 1 STK LL of J191142+1952.ICL001.3



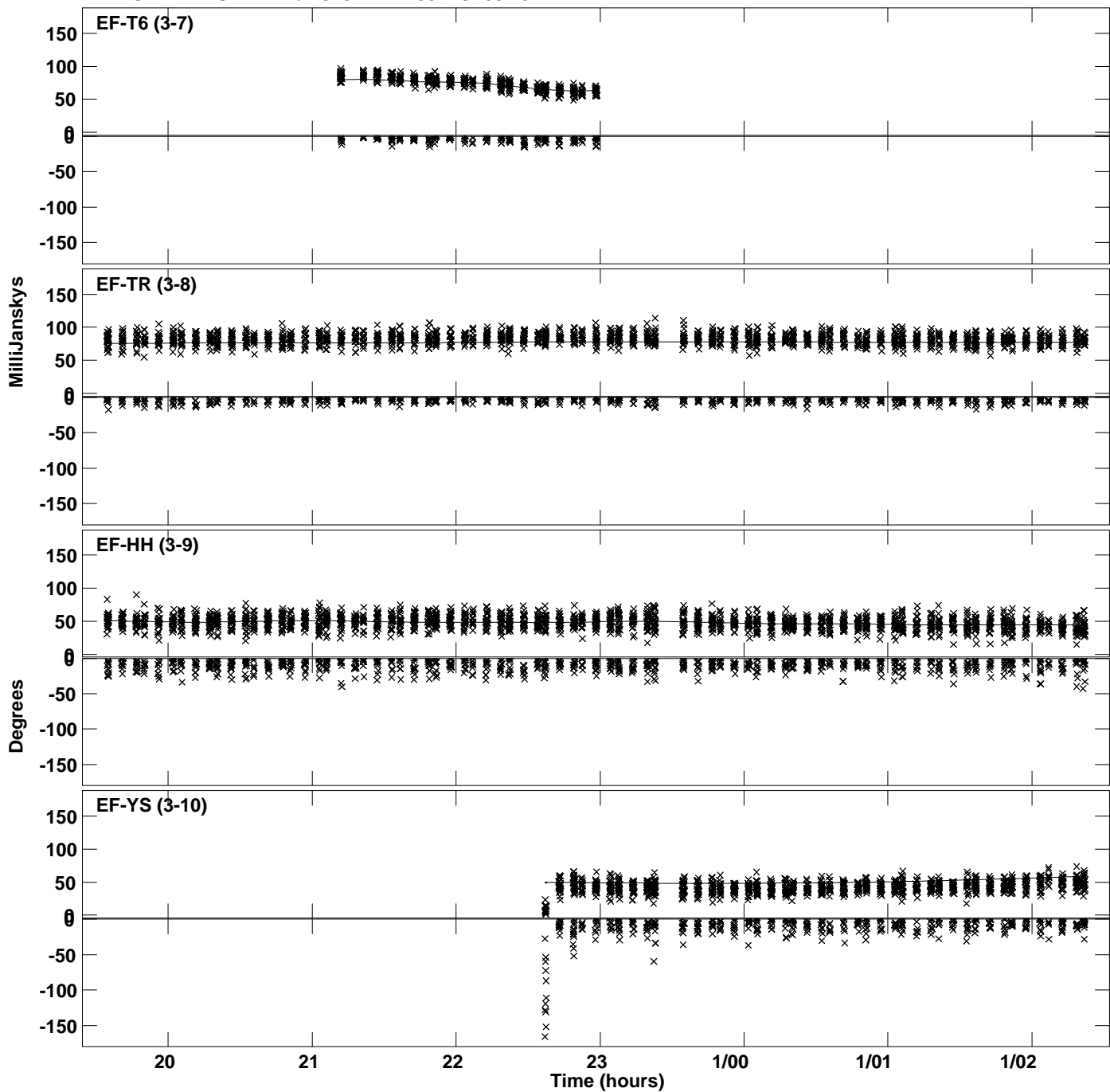
Plot file version 3 created 30-JUN-2023 14:25:27
Amplitude and Phase vs Time for J191142+1952.MULTI.1 CL # 3
IF 1 CHAN 1 STK LL of J191142+1952.ICL001.3



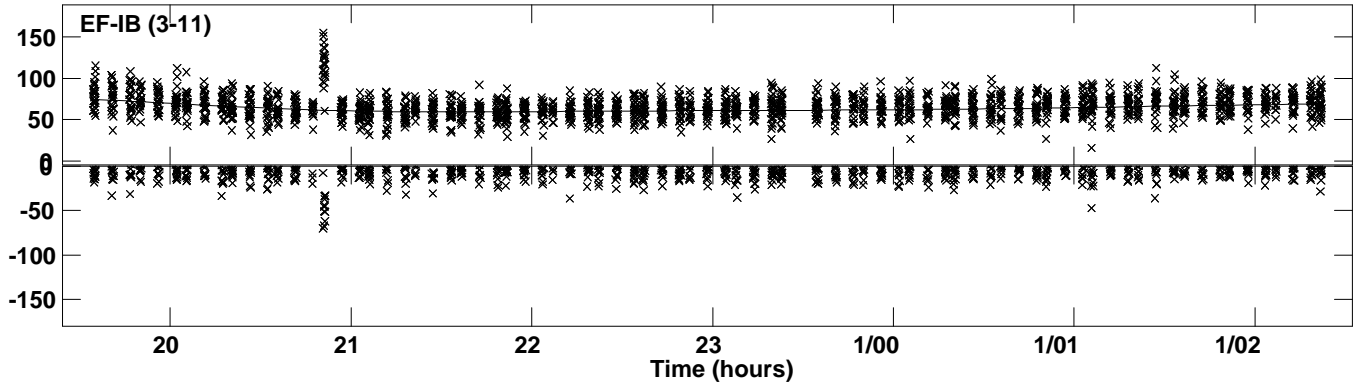
PLot file version 4 created 30-JUN-2023 14:25:27
Amplitude andPhase vs Time for J191142+1952.MULTI.1 CL # 3
IF 2 CHAN 1 STK LL of J191142+1952.ICL001.3



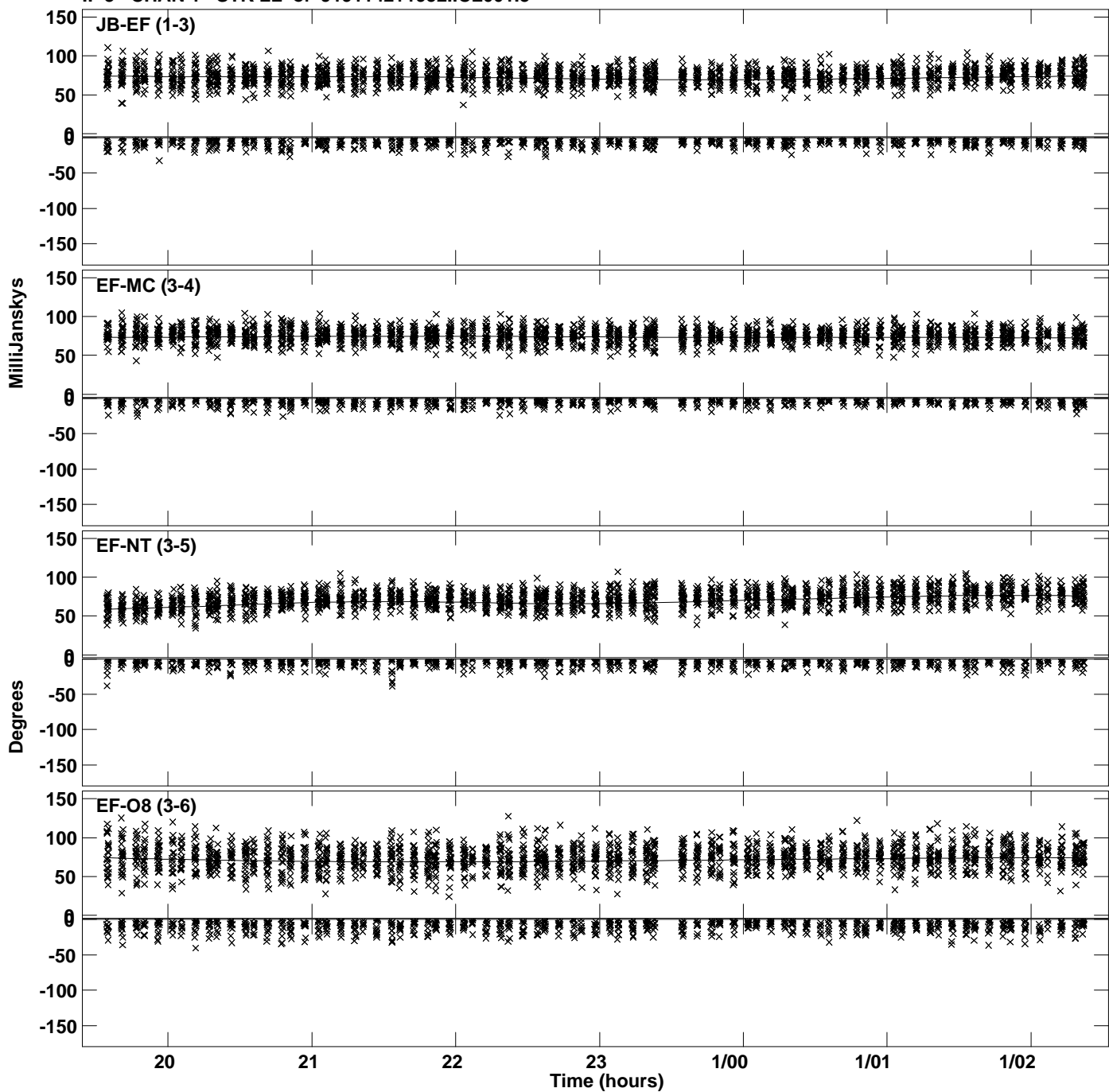
Plot file version 5 created 30-JUN-2023 14:25:27
Amplitude and Phase vs Time for J191142+1952.MULTI.1 CL # 3
IF 2 CHAN 1 STK LL of J191142+1952.ICL001.3



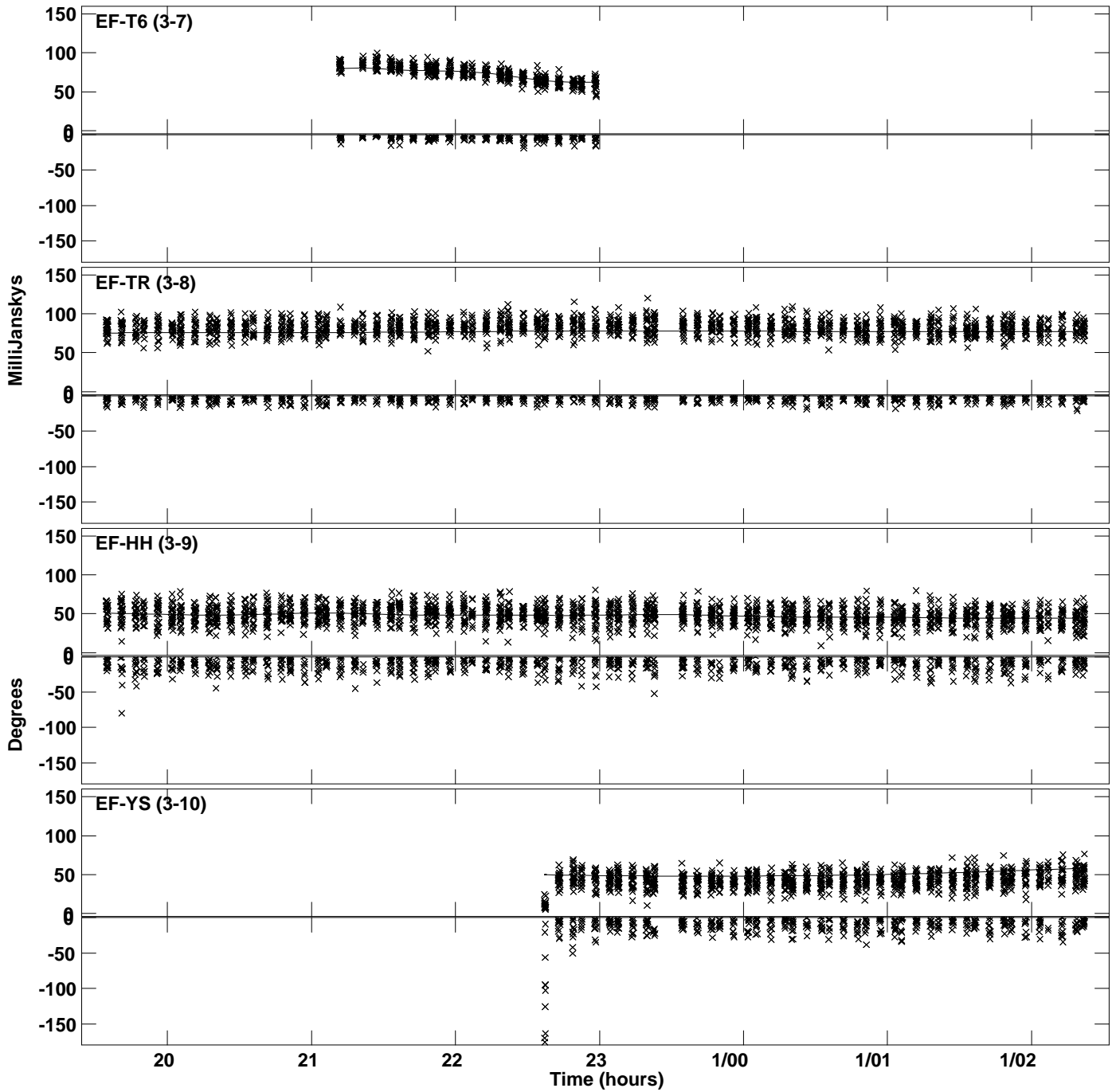
Plot file version 6 created 30-JUN-2023 14:25:27
Amplitude and Phase vs Time for J191142+1952.MULTI.1 CL # 3
IF 2 CHAN 1 STK LL of J191142+1952.ICL001.3



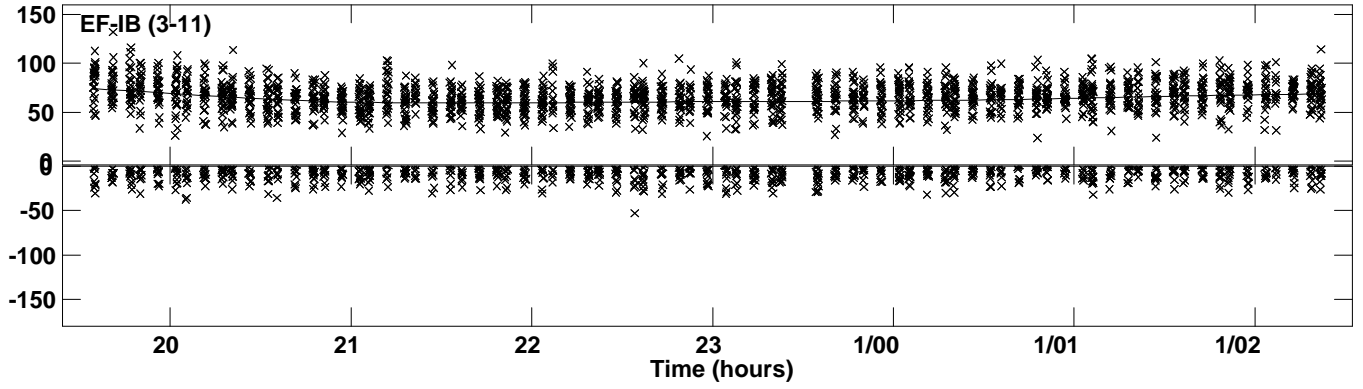
Plot file version 7 created 30-JUN-2023 14:25:28
Amplitude andPhase vs Time for J191142+1952.MULTI.1 CL # 3
IF 3 CHAN 1 STK LL of J191142+1952.ICL001.3



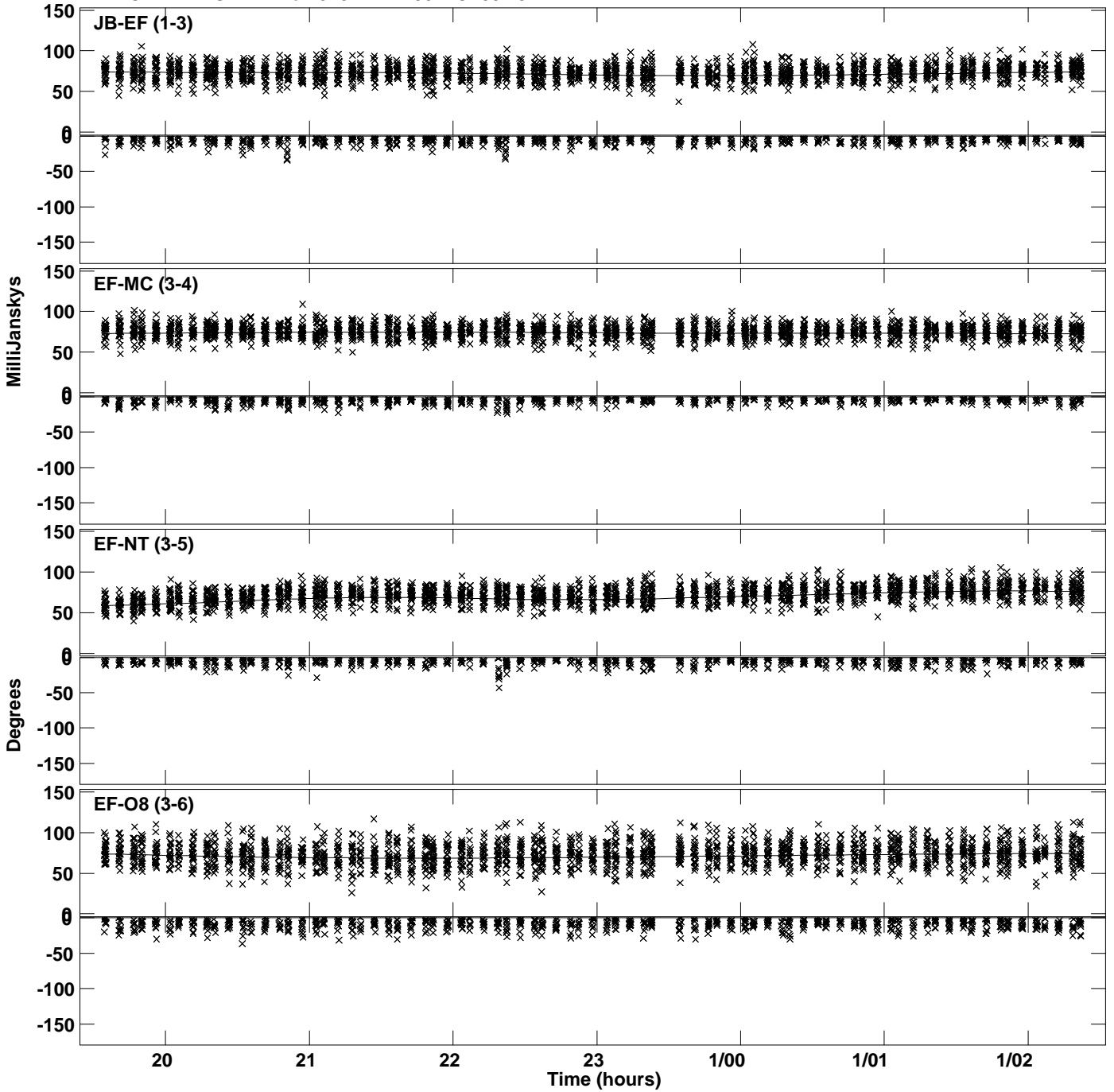
Plot file version 8 created 30-JUN-2023 14:25:28
Amplitude andPhase vs Time for J191142+1952.MULTI.1 CL # 3
IF 3 CHAN 1 STK LL of J191142+1952.ICL001.3



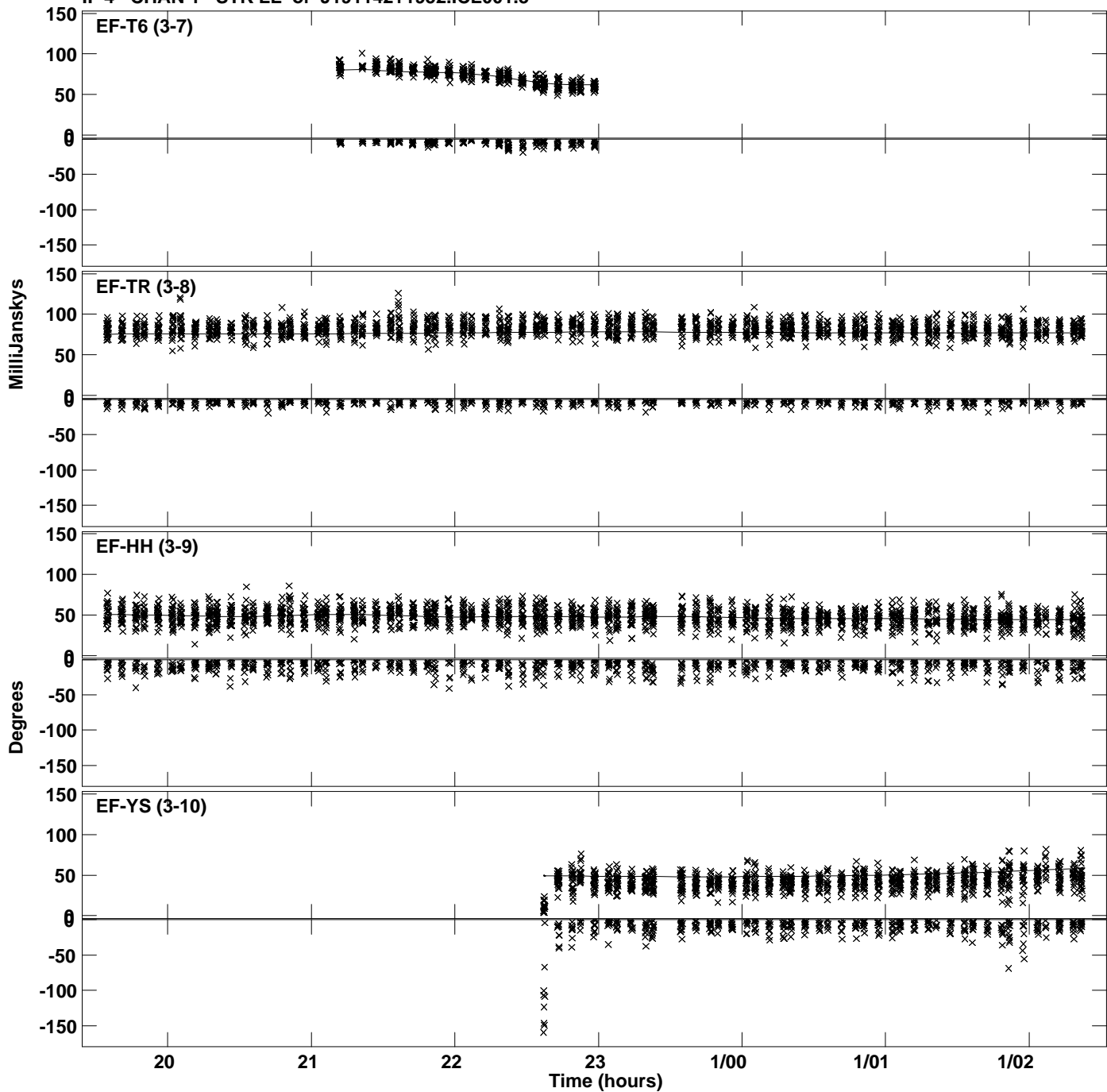
PLot file version 9 created 30-JUN-2023 14:25:28
Amplitude andPhase vs Time for J191142+1952.MULTI.1 CL # 3
IF 3 CHAN 1 STK LL of J191142+1952.ICL001.3



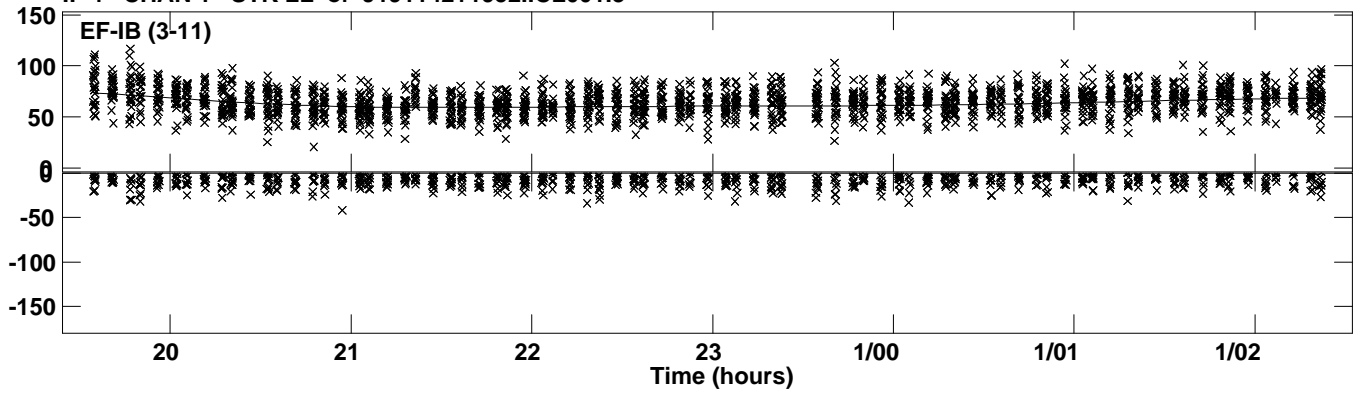
Plot file version 10 created 30-JUN-2023 14:25:28
Amplitude and Phase vs Time for J191142+1952.MULTI.1 CL # 3
IF 4 CHAN 1 STK LL of J191142+1952.ICL001.3



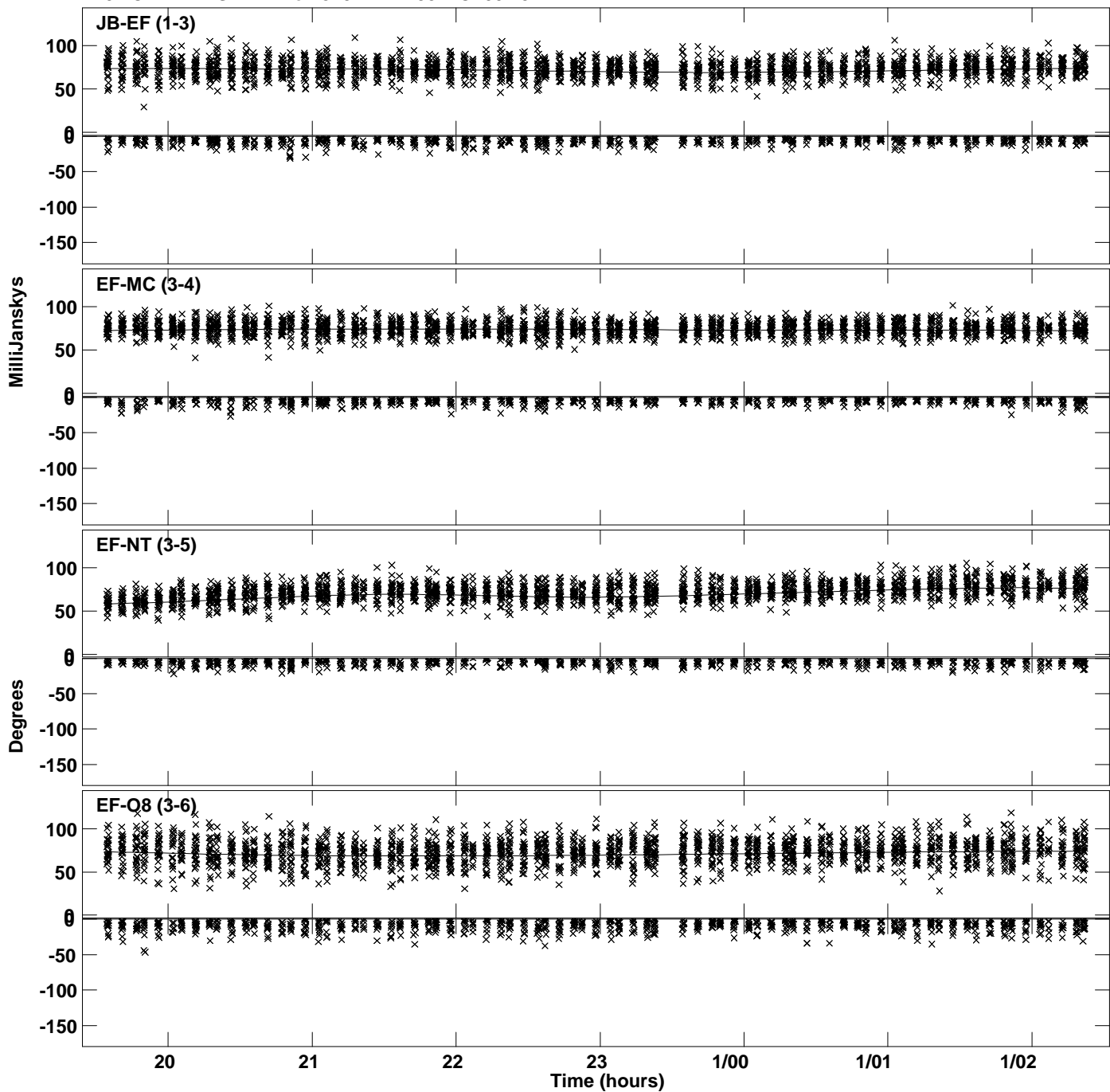
PLot file version 11 created 30-JUN-2023 14:25:28
Amplitude andPhase vs Time for J191142+1952.MULTI.1 CL # 3
IF 4 CHAN 1 STK LL of J191142+1952.ICL001.3



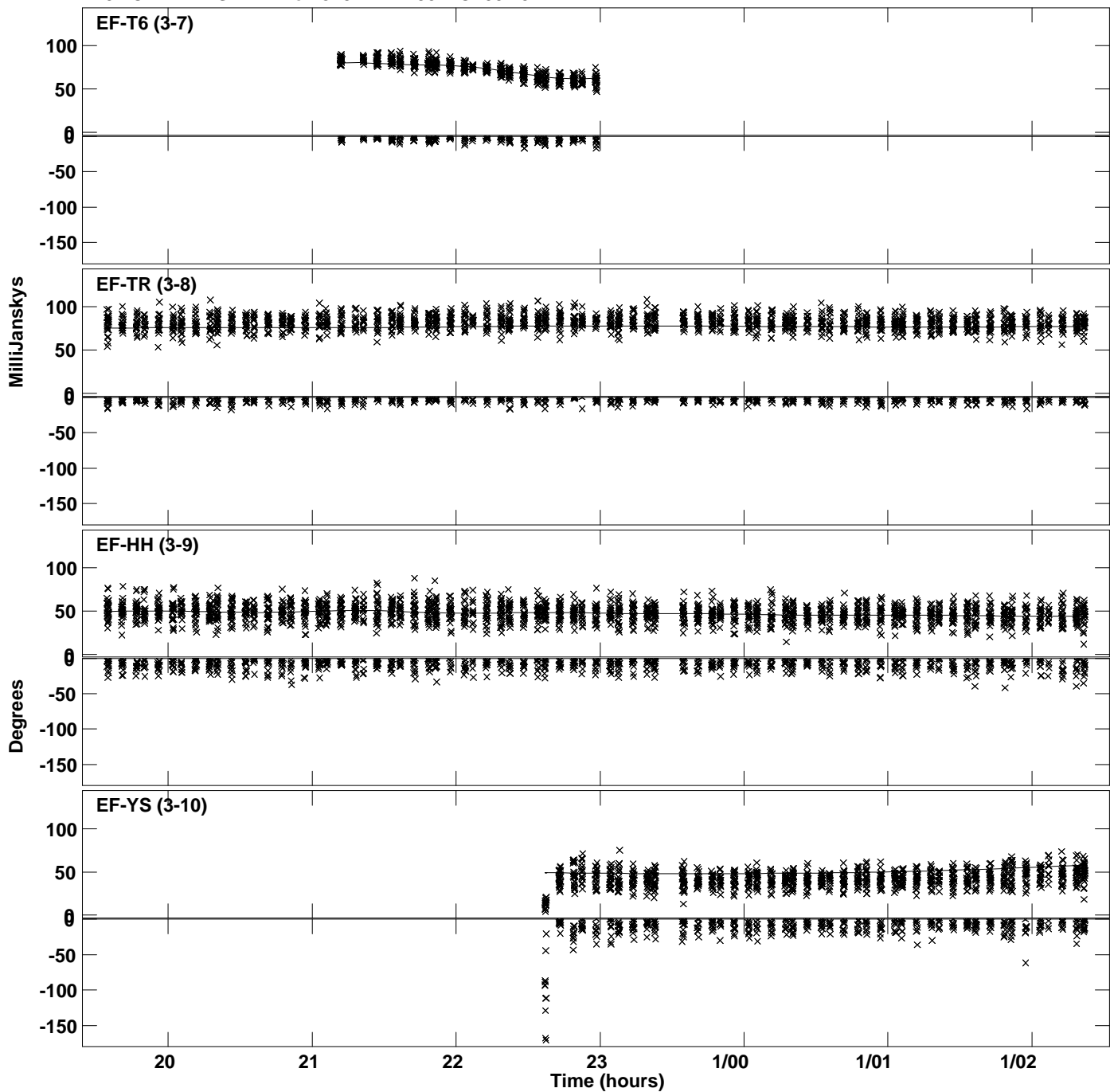
PLot file version 12 created 30-JUN-2023 14:25:28
Amplitude andPhase vs Time for J191142+1952.MULTI.1 CL # 3
IF 4 CHAN 1 STK LL of J191142+1952.ICL001.3



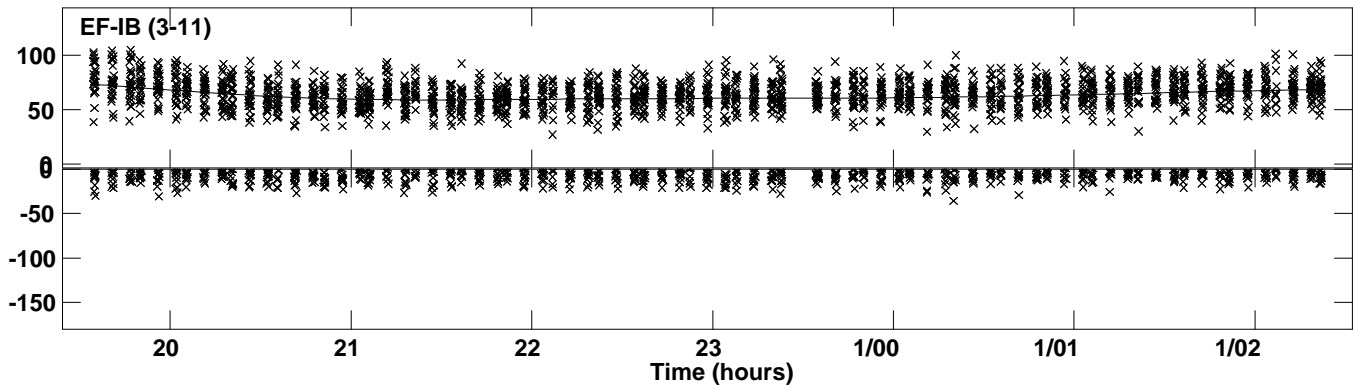
Plot file version 13 created 30-JUN-2023 14:25:28
Amplitude andPhase vs Time for J191142+1952.MULTI.1 CL # 3
IF 5 CHAN 1 STK LL of J191142+1952.ICL001.3



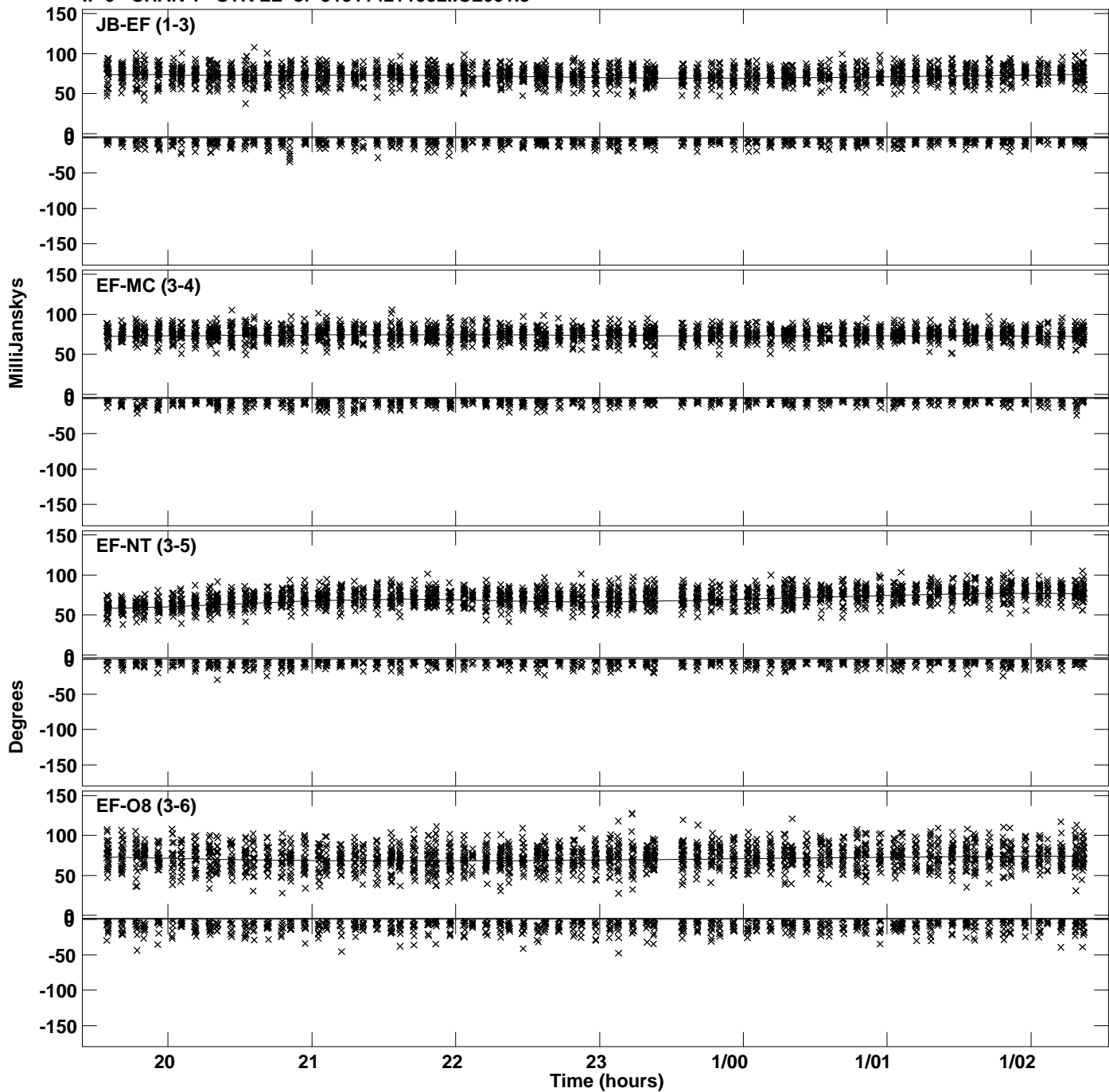
PLot file version 14 created 30-JUN-2023 14:25:28
Amplitude andPhase vs Time for J191142+1952.MULTI.1 CL # 3
IF 5 CHAN 1 STK LL of J191142+1952.ICL001.3



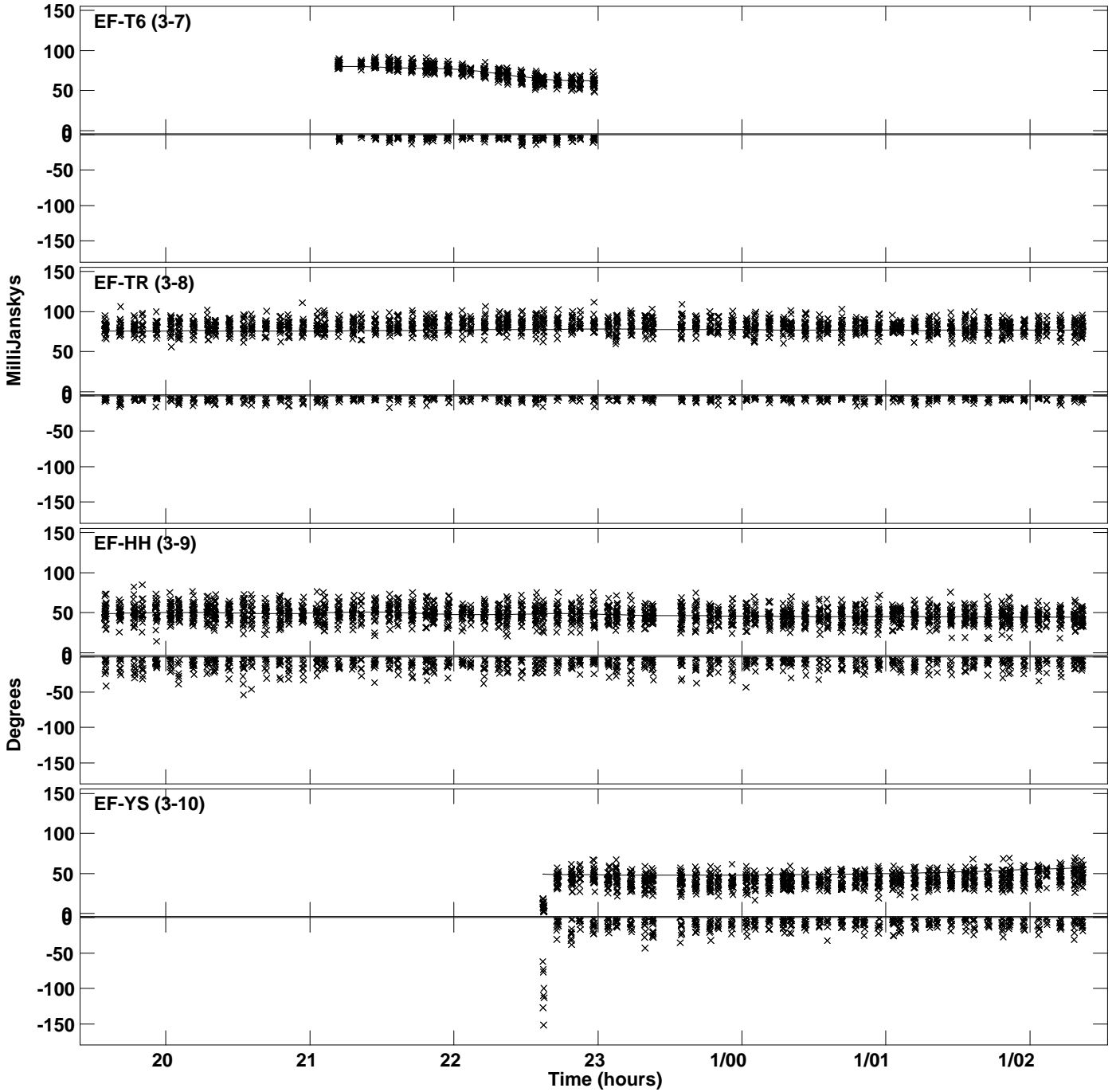
PLot file version 15 created 30-JUN-2023 14:25:28
Amplitude andPhase vs Time for J191142+1952.MULTI.1 CL # 3
IF 5 CHAN 1 STK LL of J191142+1952.ICL001.3



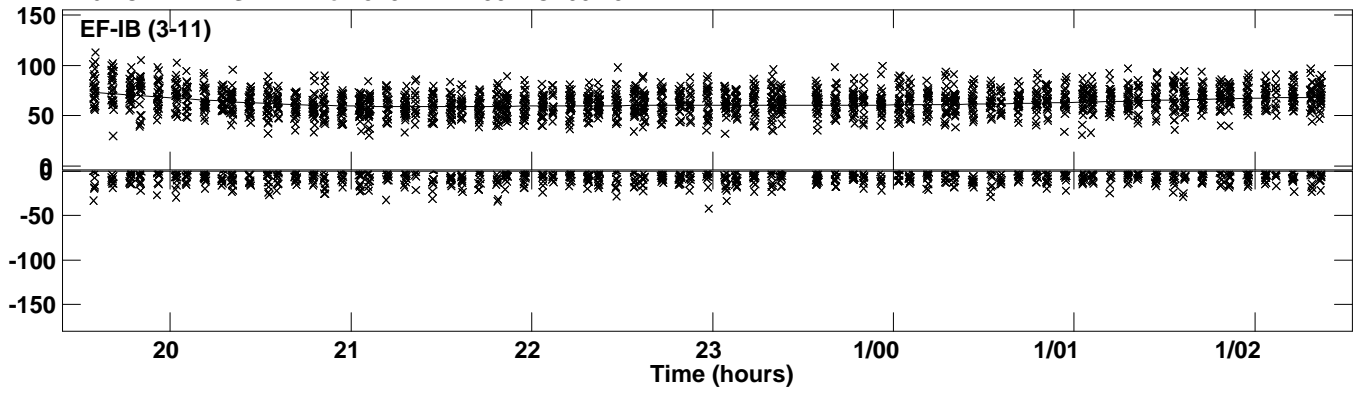
Plot file version 16 created 30-JUN-2023 14:25:29
Amplitude andPhase vs Time for J191142+1952.MULTI.1 CL # 3
IF 6 CHAN 1 STK LL of J191142+1952.ICL001.3



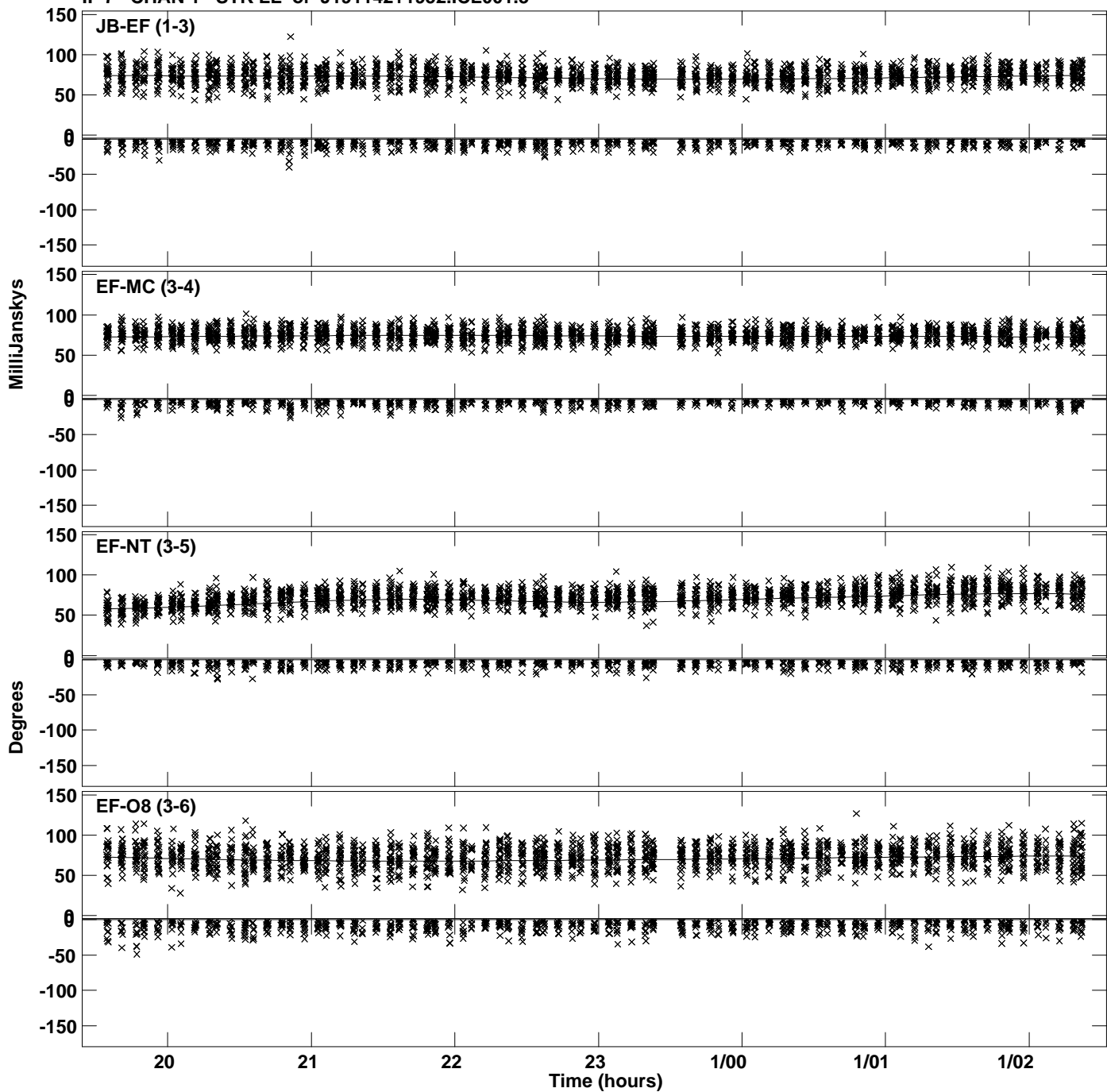
Plot file version 17 created 30-JUN-2023 14:25:29
Amplitude and Phase vs Time for J191142+1952.MULTI.1 CL # 3
IF 6 CHAN 1 STK LL of J191142+1952.ICL001.3



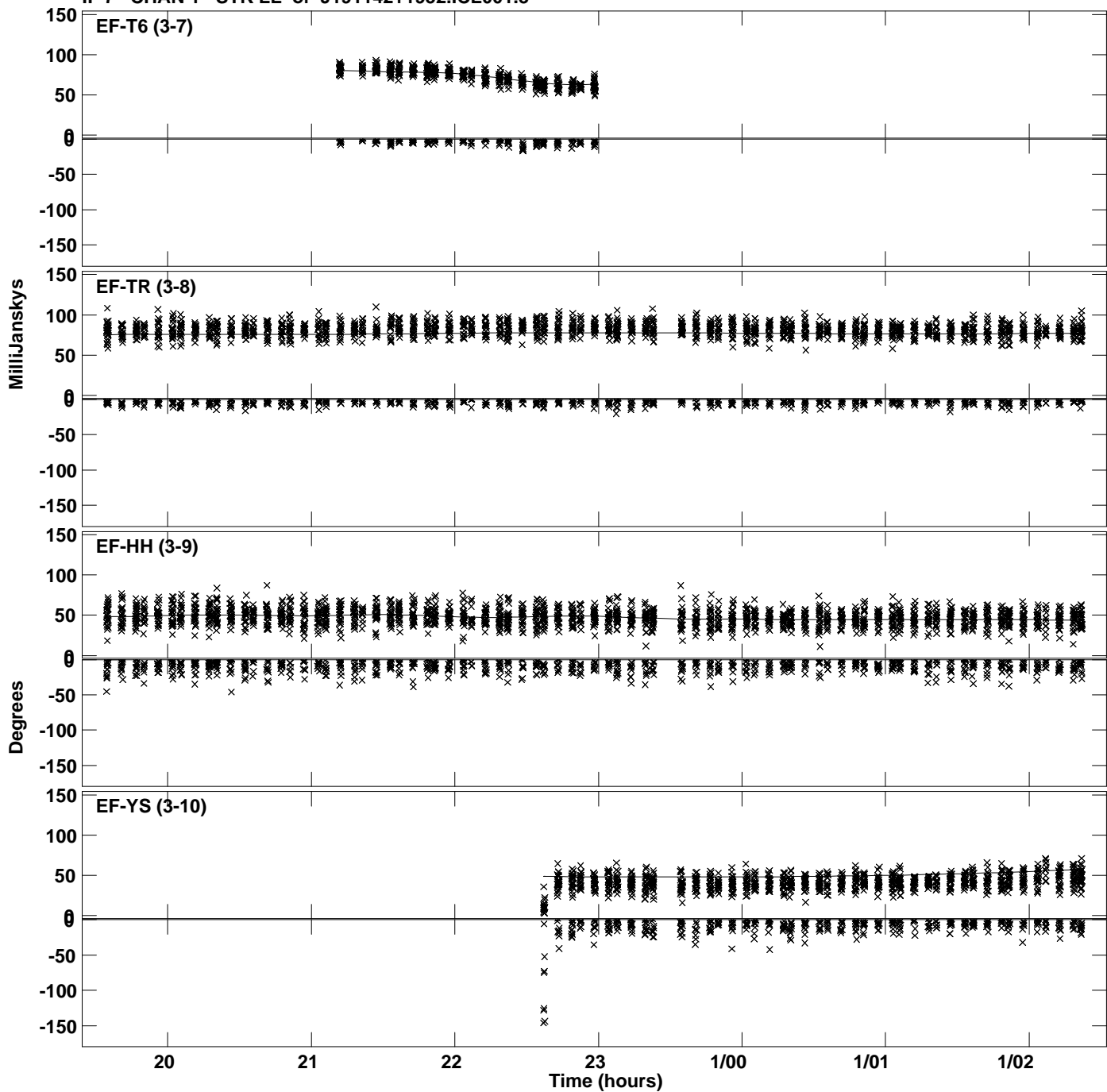
PLot file version 18 created 30-JUN-2023 14:25:29
Amplitude andPhase vs Time for J191142+1952.MULTI.1 CL # 3
IF 6 CHAN 1 STK LL of J191142+1952.ICL001.3



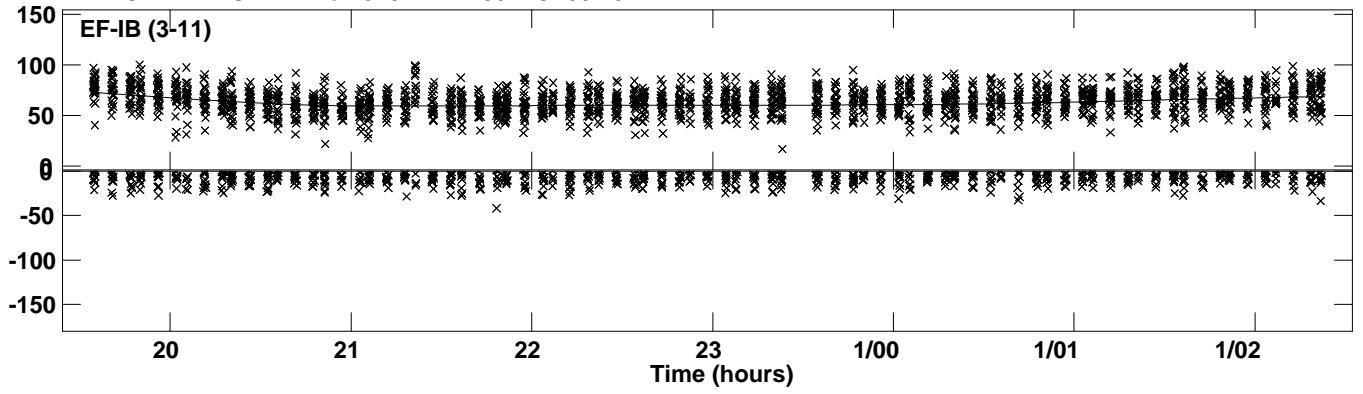
PLot file version 19 created 30-JUN-2023 14:25:29
Amplitude andPhase vs Time for J191142+1952.MULTI.1 CL # 3
IF 7 CHAN 1 STK LL of J191142+1952.ICL001.3



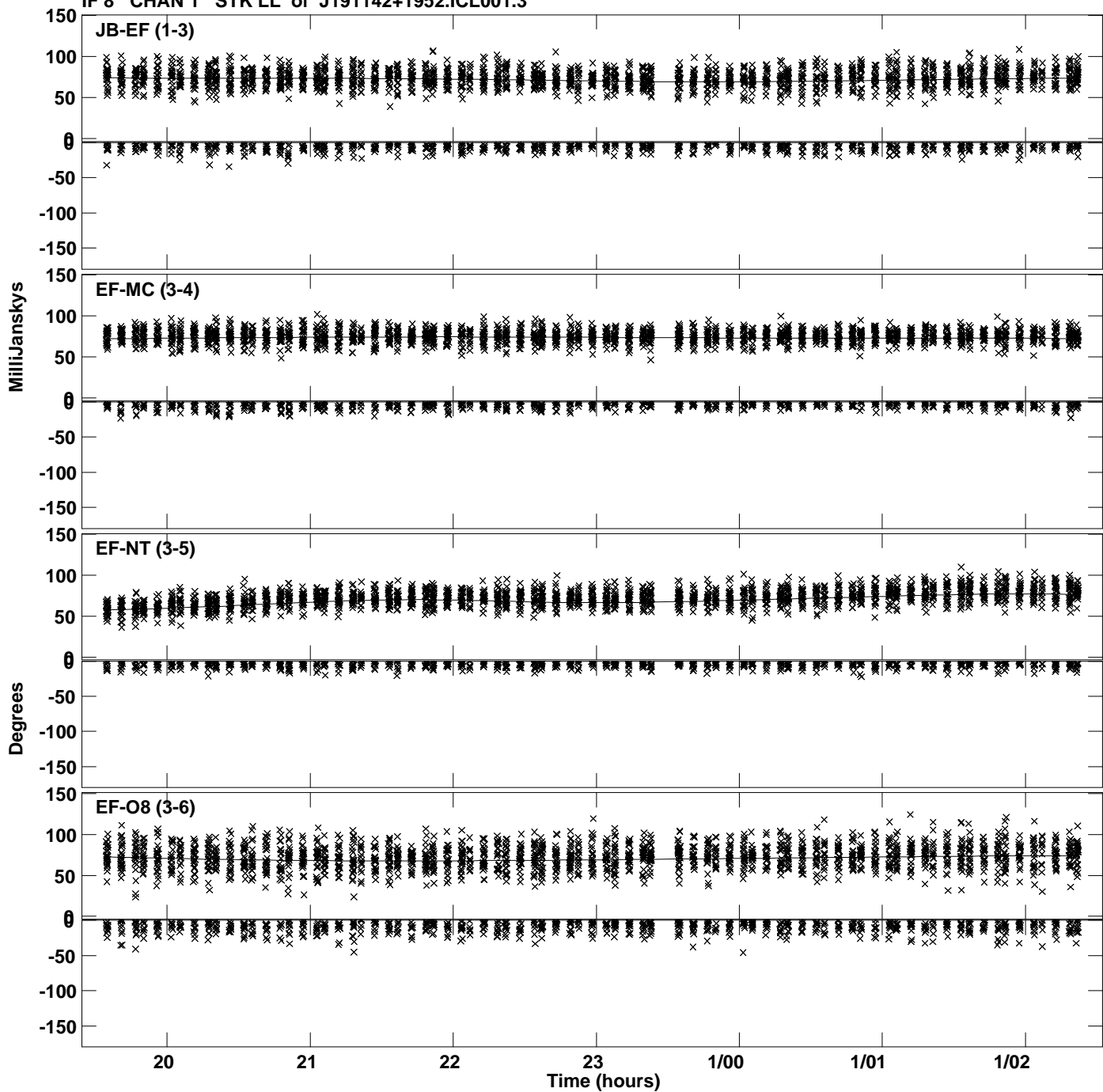
Plot file version 20 created 30-JUN-2023 14:25:29
Amplitude andPhase vs Time for J191142+1952.MULTI.1 CL # 3
IF 7 CHAN 1 STK LL of J191142+1952.ICL001.3



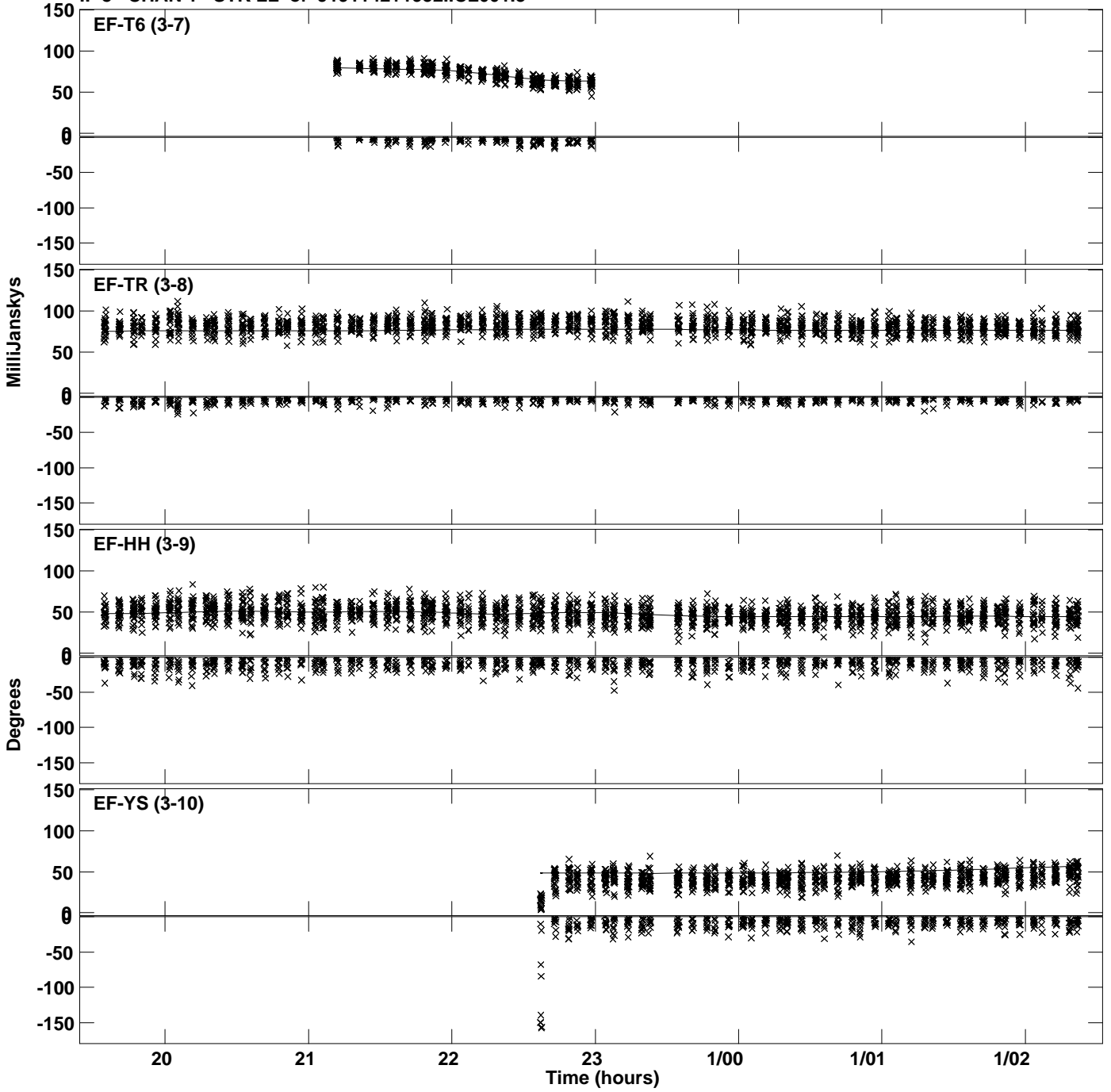
PLot file version 21 created 30-JUN-2023 14:25:29
Amplitude andPhase vs Time for J191142+1952.MULTI.1 CL # 3
IF 7 CHAN 1 STK LL of J191142+1952.ICL001.3



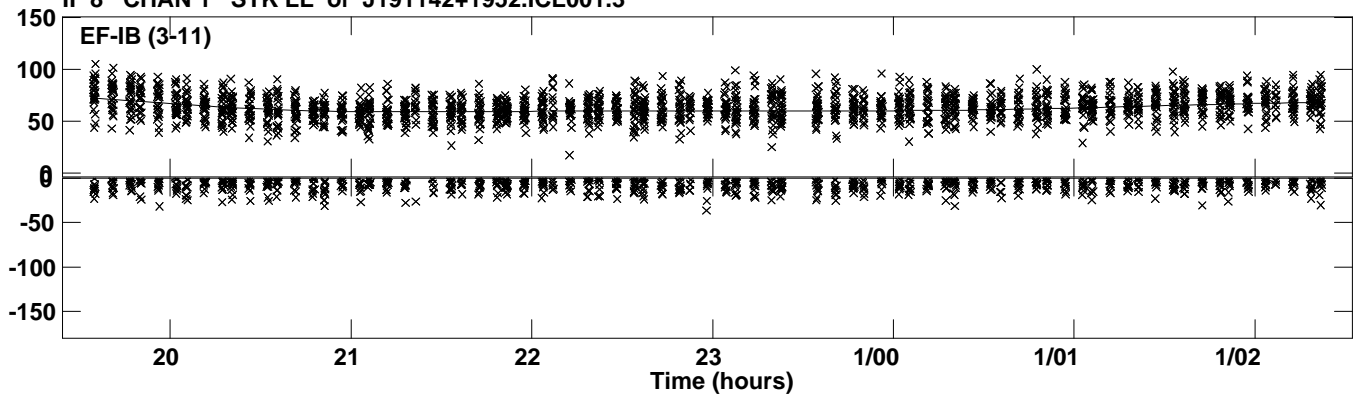
PLot file version 22 created 30-JUN-2023 14:25:29
Amplitude andPhase vs Time for J191142+1952.MULTI.1 CL # 3
IF 8 CHAN 1 STK LL of J191142+1952.ICL001.3



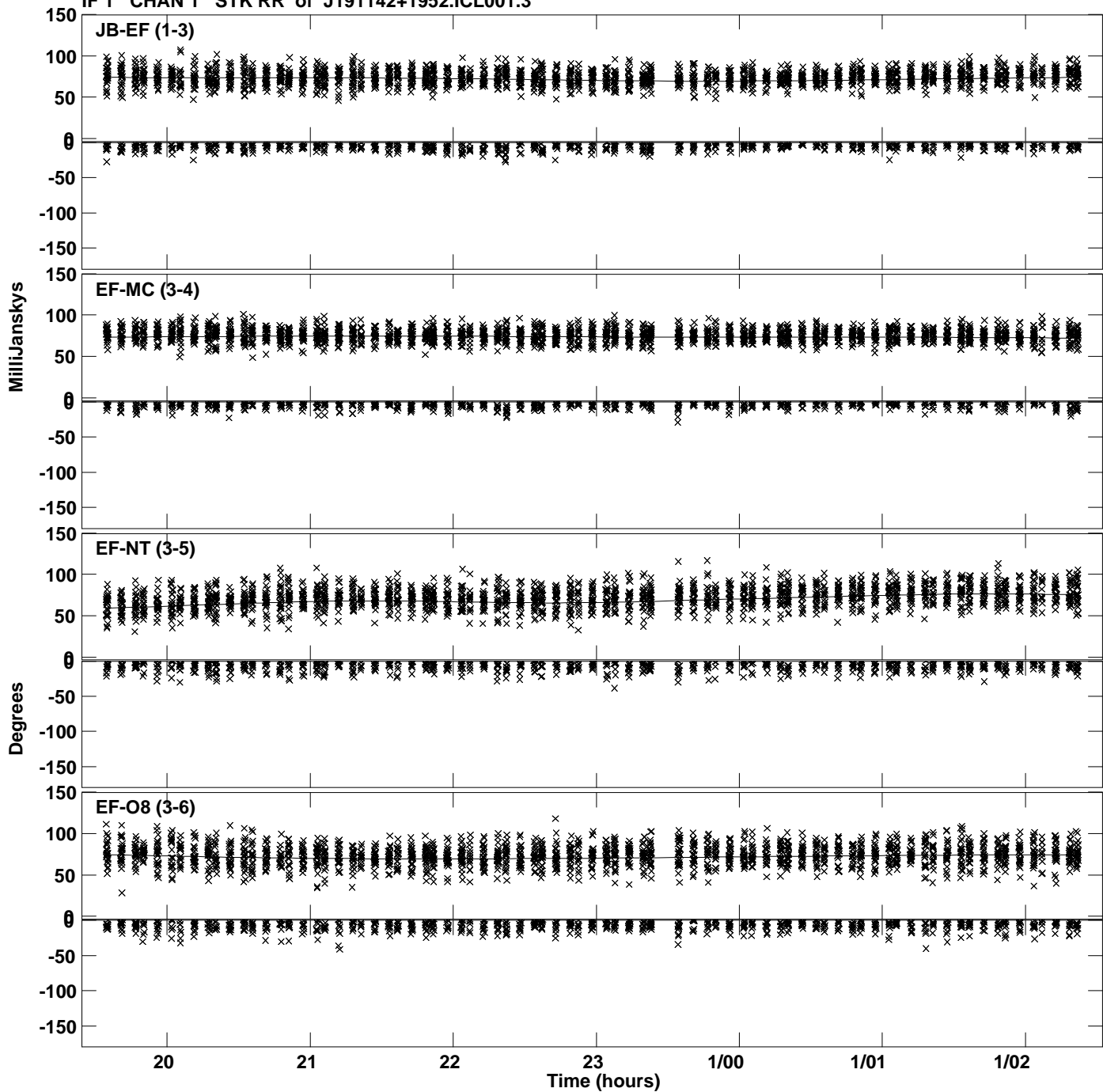
PLot file version 23 created 30-JUN-2023 14:25:29
Amplitude andPhase vs Time for J191142+1952.MULTI.1 CL # 3
IF 8 CHAN 1 STK LL of J191142+1952.ICL001.3



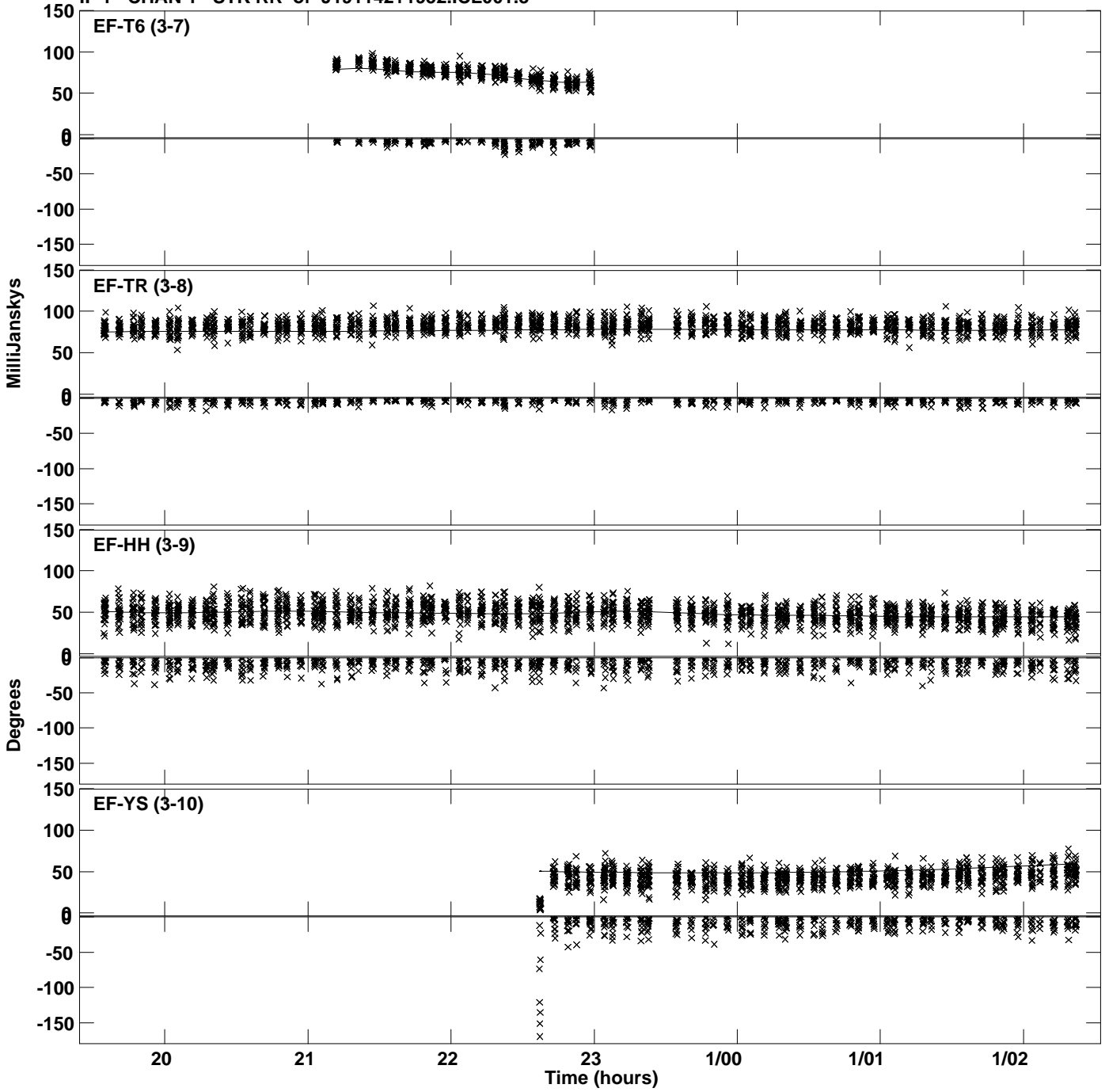
PLot file version 24 created 30-JUN-2023 14:25:29
Amplitude andPhase vs Time for J191142+1952.MULTI.1 CL # 3
IF 8 CHAN 1 STK LL of J191142+1952.ICL001.3



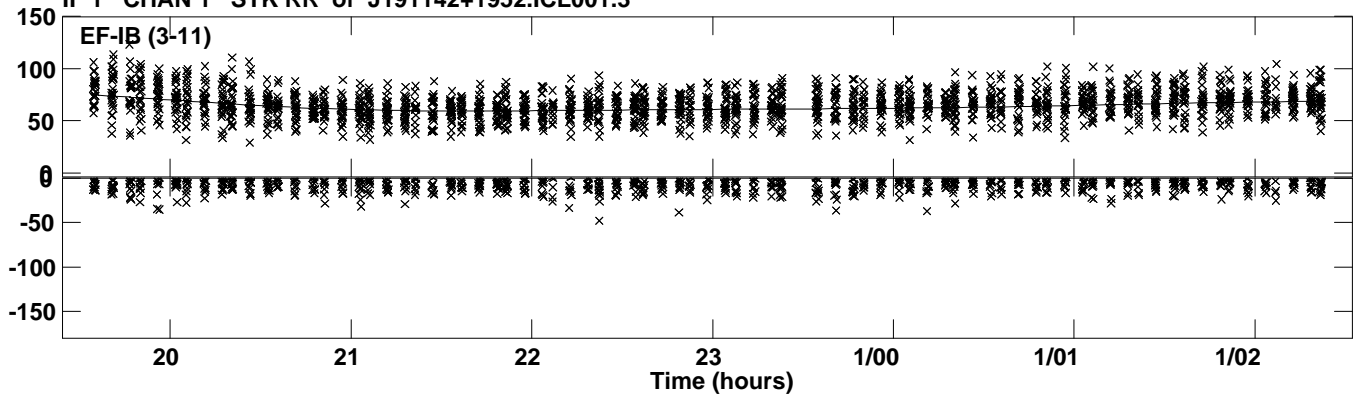
Plot file version 25 created 30-JUN-2023 14:25:30
Amplitude andPhase vs Time for J191142+1952.MULTI.1 CL # 3
IF 1 CHAN 1 STK RR of J191142+1952.ICL001.3



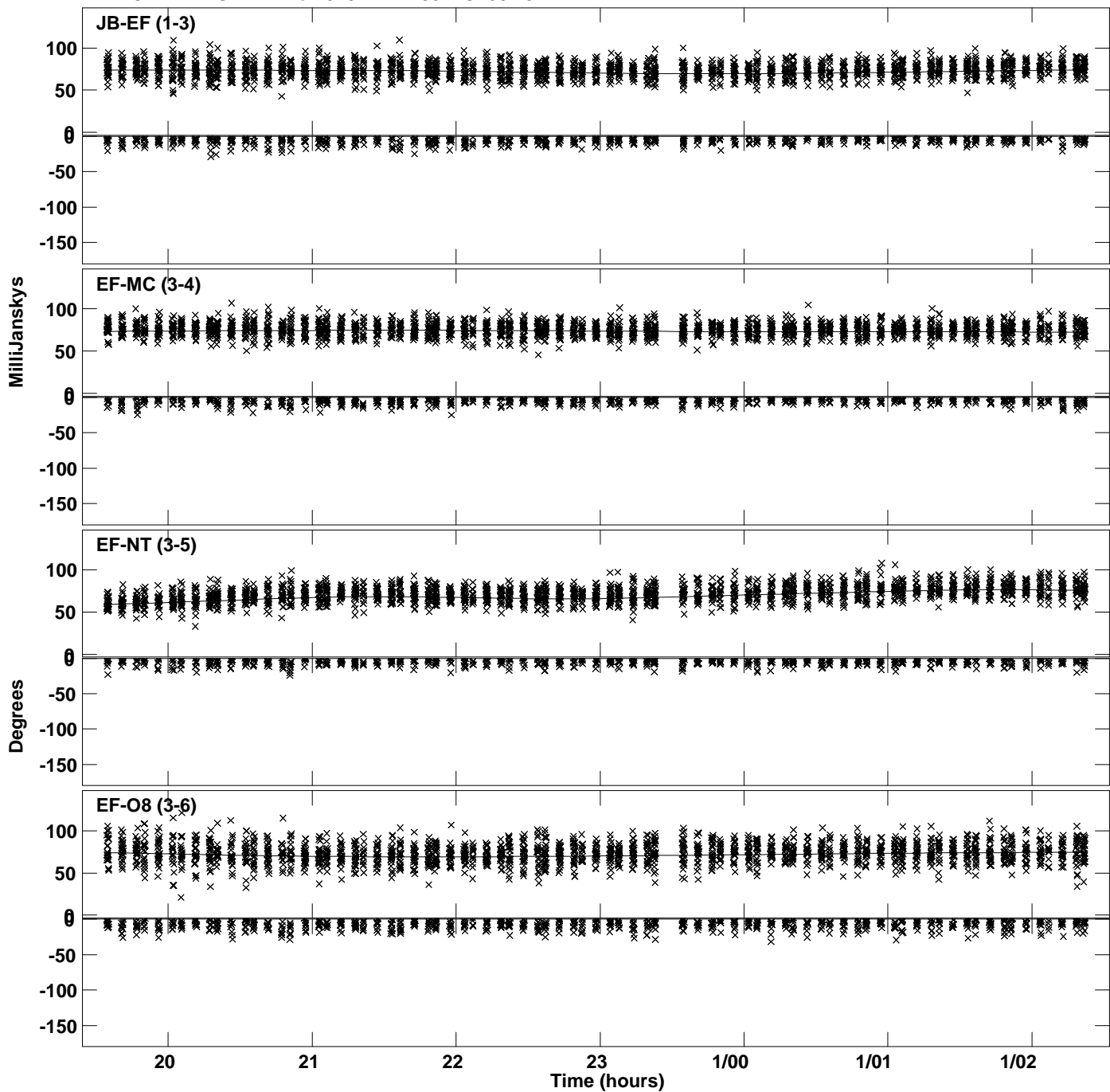
PLot file version 26 created 30-JUN-2023 14:25:30
Amplitude andPhase vs Time for J191142+1952.MULTI.1 CL # 3
IF 1 CHAN 1 STK RR of J191142+1952.ICL001.3



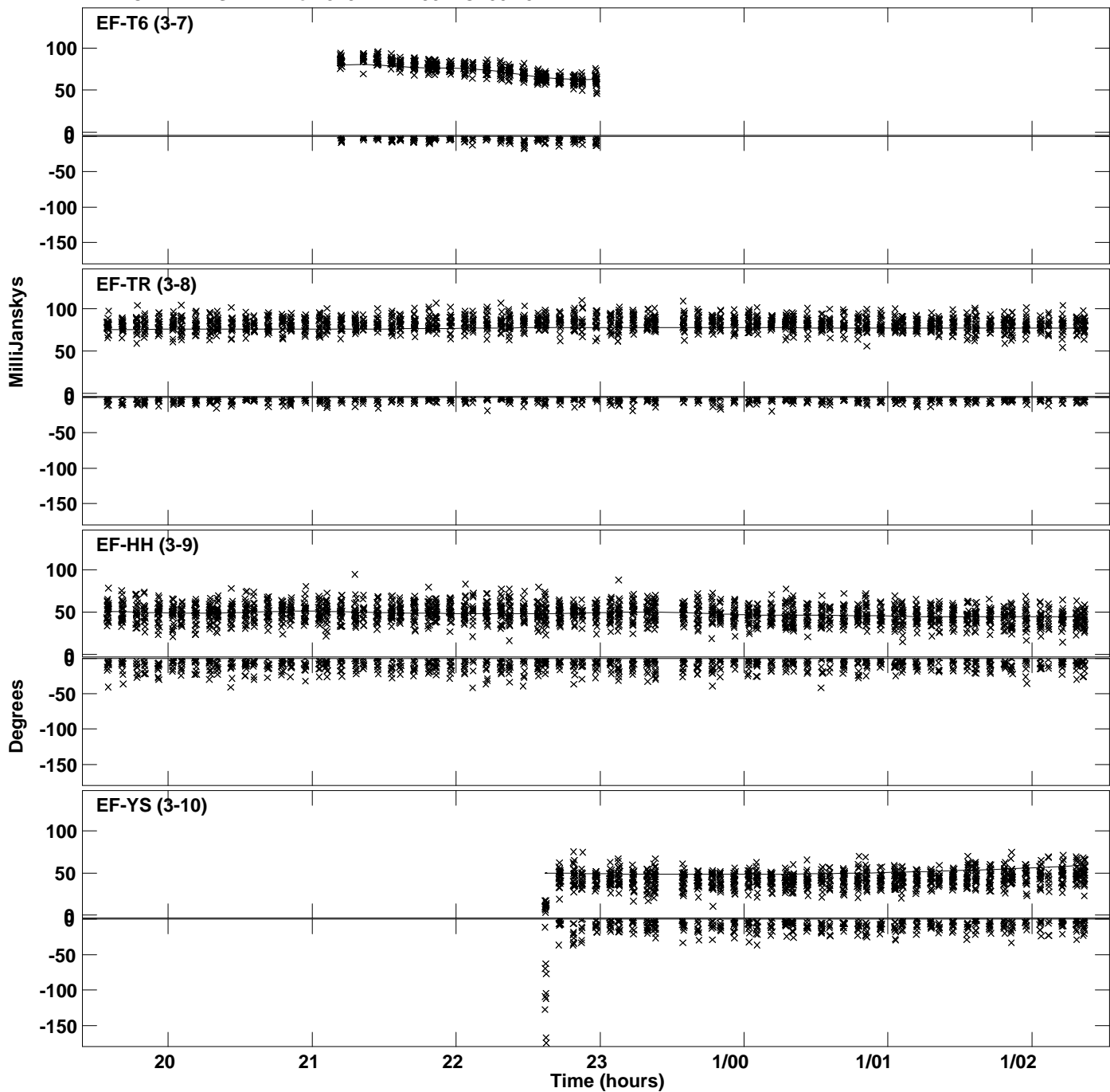
Plot file version 27 created 30-JUN-2023 14:25:30
Amplitude and Phase vs Time for J191142+1952.MULTI.1 CL # 3
IF 1 CHAN 1 STK RR of J191142+1952.ICL001.3



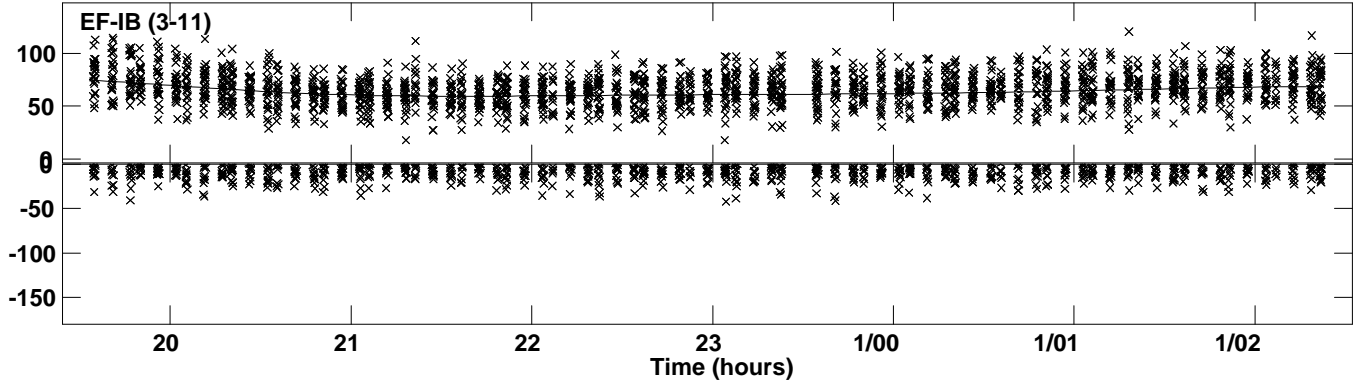
PLot file version 28 created 30-JUN-2023 14:25:30
Amplitude andPhase vs Time for J191142+1952.MULTI.1 CL # 3
IF 2 CHAN 1 STK RR of J191142+1952.ICL001.3



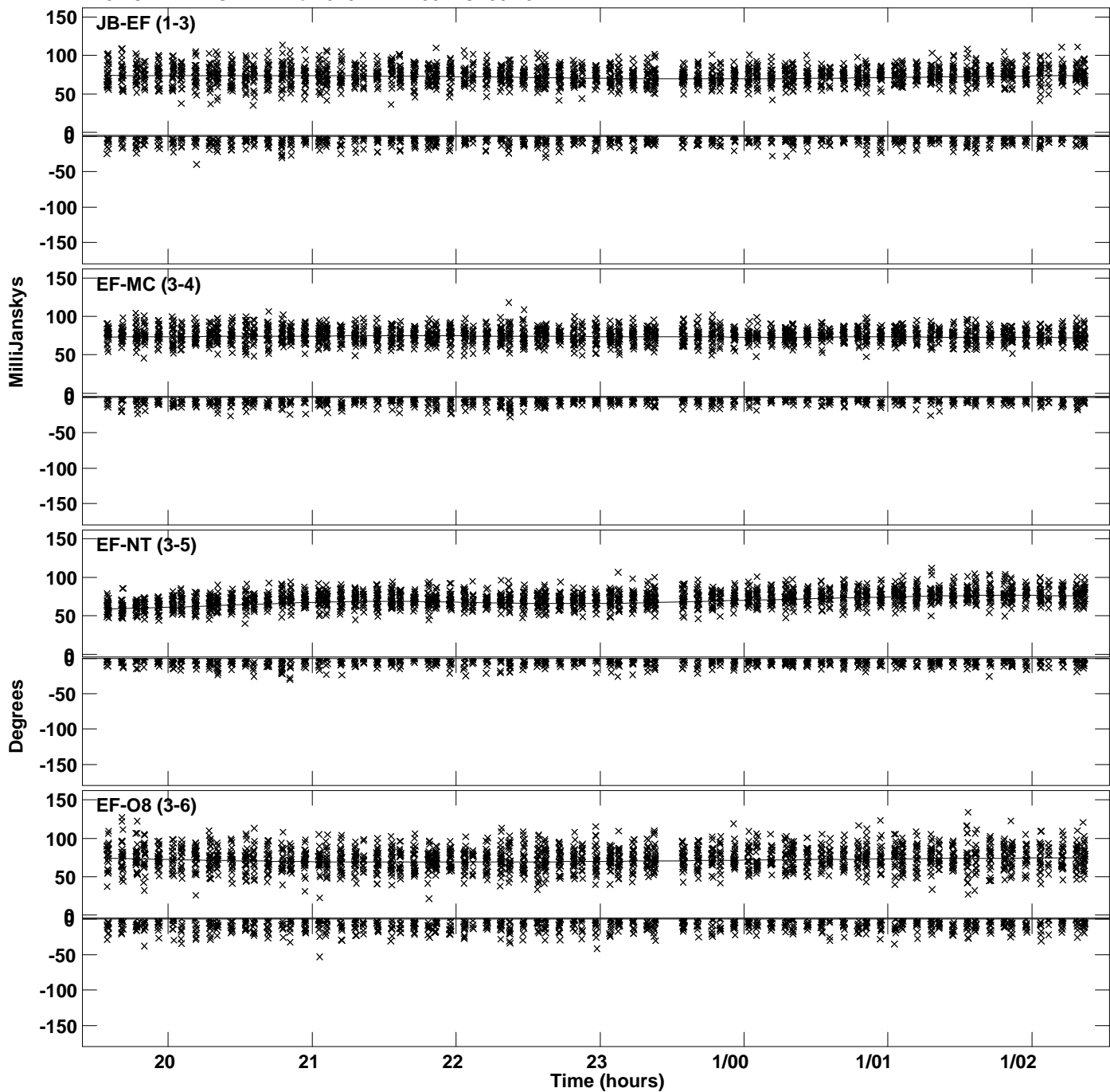
PLot file version 29 created 30-JUN-2023 14:25:30
Amplitude andPhase vs Time for J191142+1952.MULTI.1 CL # 3
IF 2 CHAN 1 STK RR of J191142+1952.ICL001.3



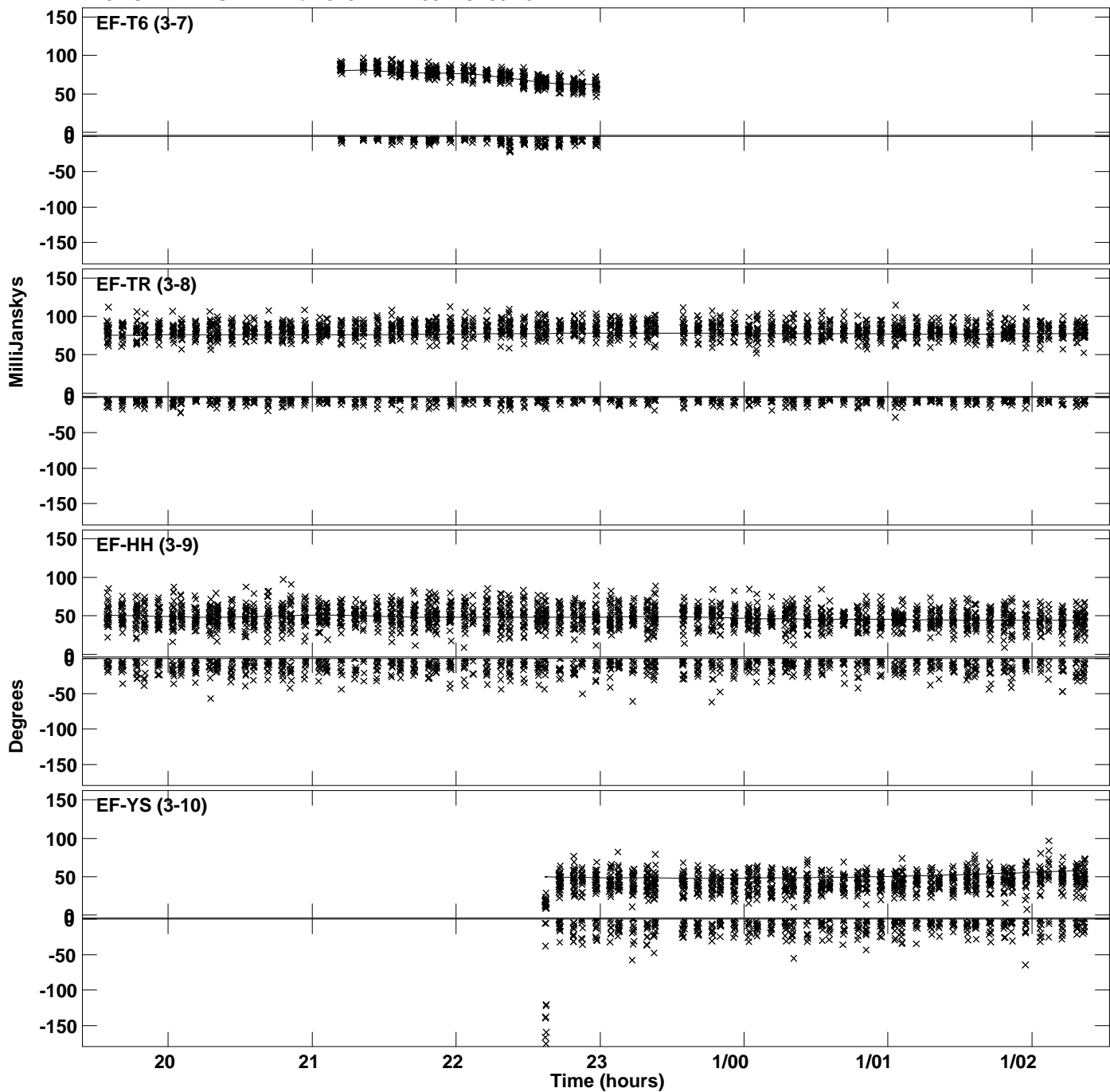
PLot file version 30 created 30-JUN-2023 14:25:30
Amplitude andPhase vs Time for J191142+1952.MULTI.1 CL # 3
IF 2 CHAN 1 STK RR of J191142+1952.ICL001.3



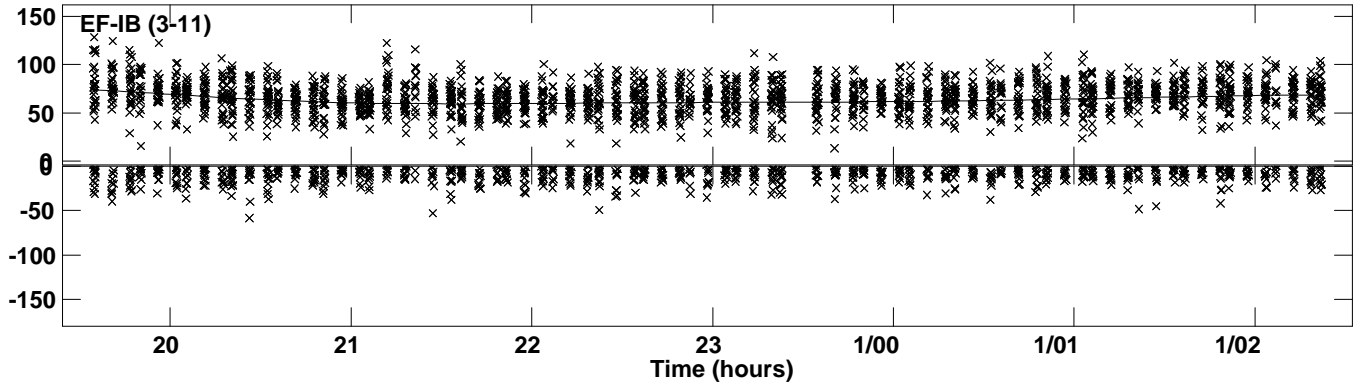
Plot file version 31 created 30-JUN-2023 14:25:30
Amplitude andPhase vs Time for J191142+1952.MULTI.1 CL # 3
IF 3 CHAN 1 STK RR of J191142+1952.ICL001.3



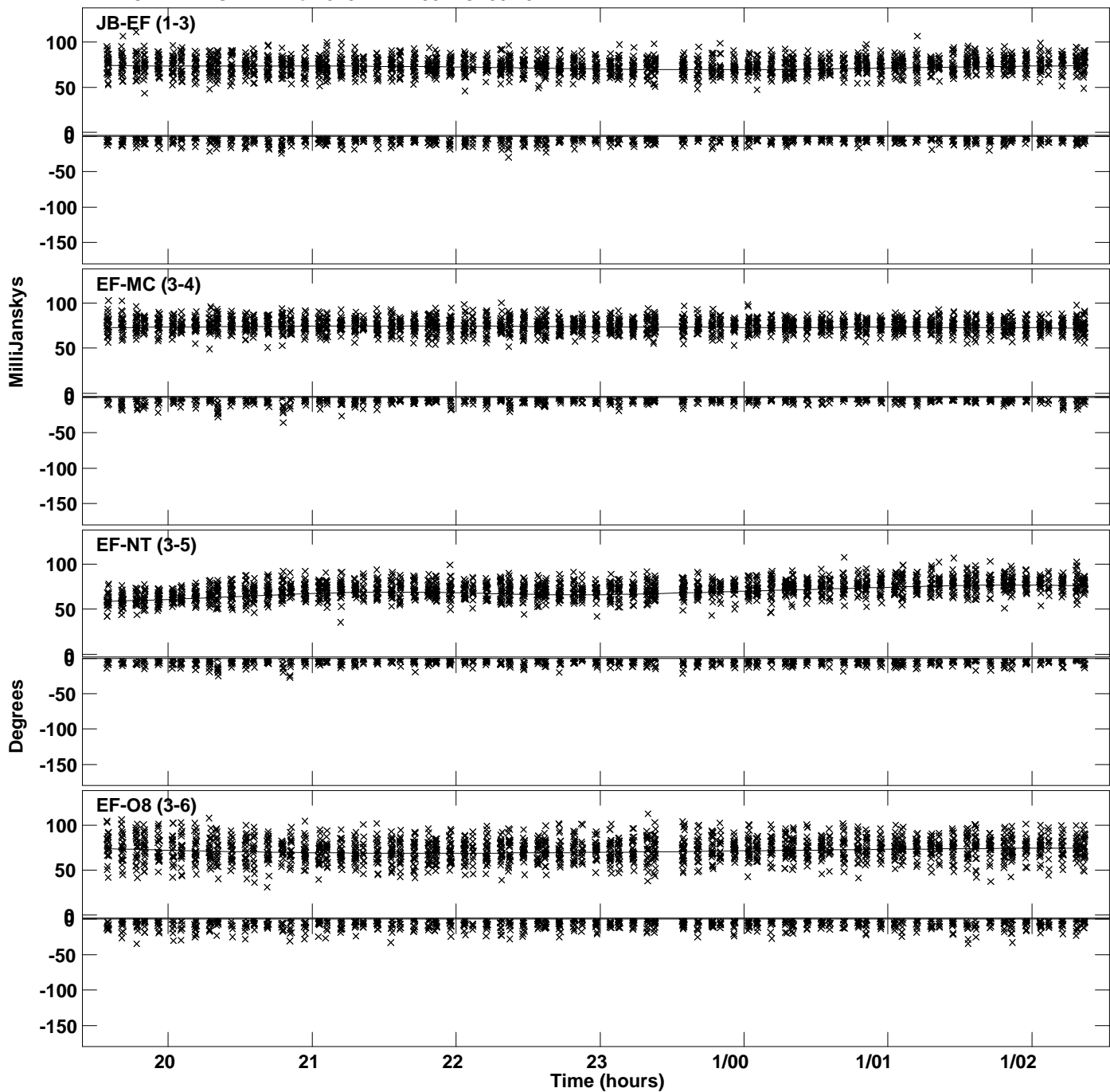
PLot file version 32 created 30-JUN-2023 14:25:30
Amplitude andPhase vs Time for J191142+1952.MULTI.1 CL # 3
IF 3 CHAN 1 STK RR of J191142+1952.ICL001.3



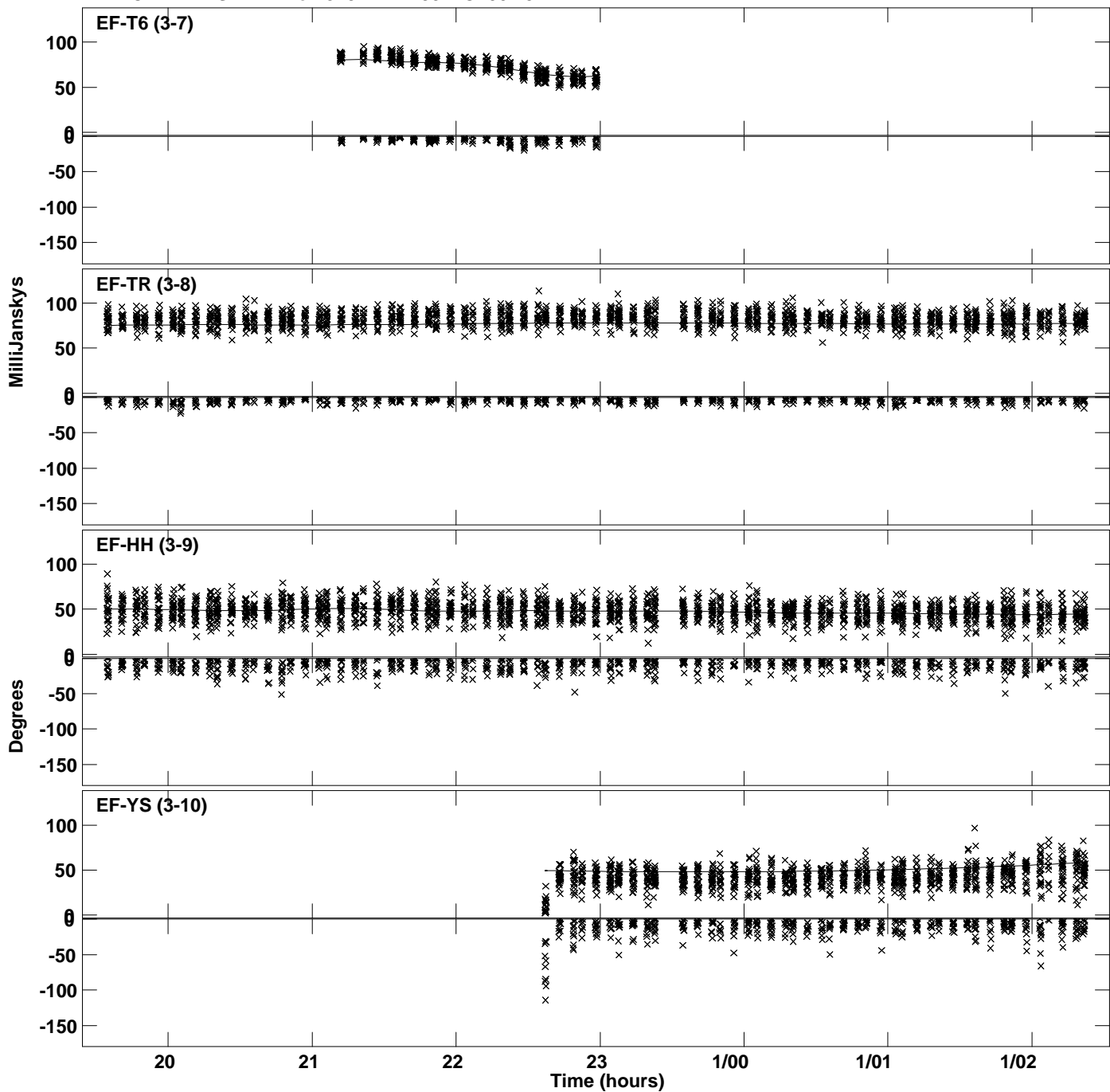
Plot file version 33 created 30-JUN-2023 14:25:30
Amplitude andPhase vs Time for J191142+1952.MULTI.1 CL # 3
IF 3 CHAN 1 STK RR of J191142+1952.ICL001.3



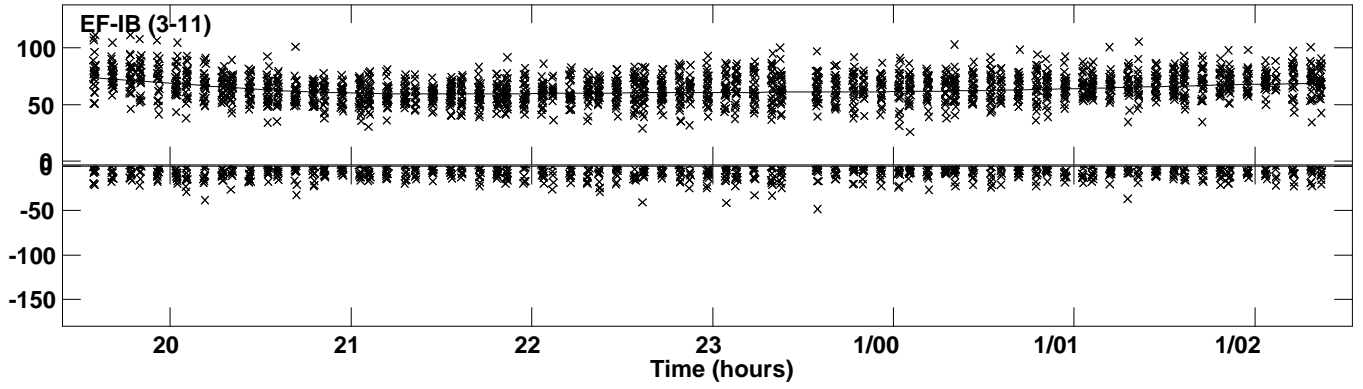
Plot file version 34 created 30-JUN-2023 14:25:31
Amplitude andPhase vs Time for J191142+1952.MULTI.1 CL # 3
IF 4 CHAN 1 STK RR of J191142+1952.ICL001.3



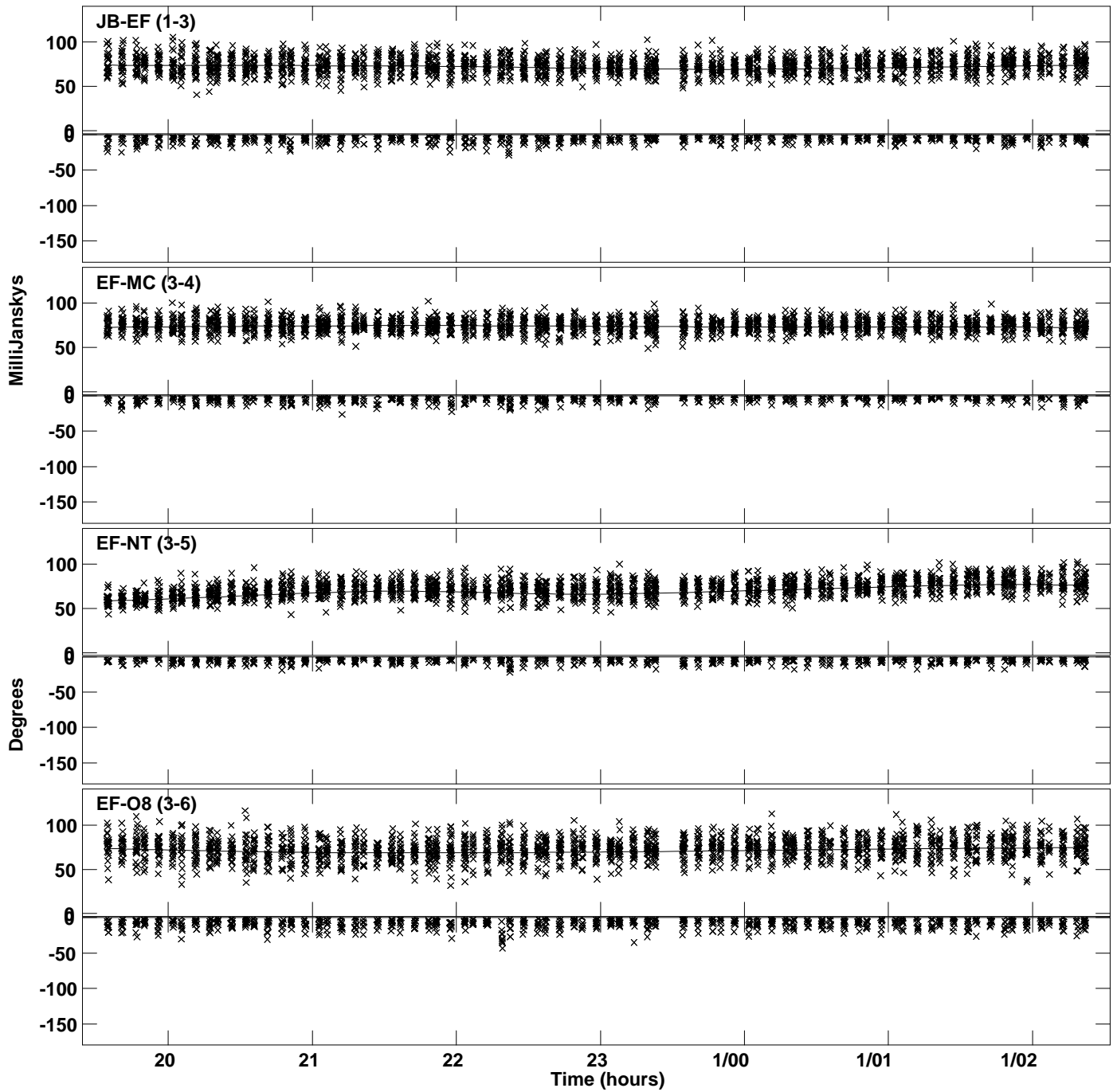
Plot file version 35 created 30-JUN-2023 14:25:31
Amplitude andPhase vs Time for J191142+1952.MULTI.1 CL # 3
IF 4 CHAN 1 STK RR of J191142+1952.ICL001.3



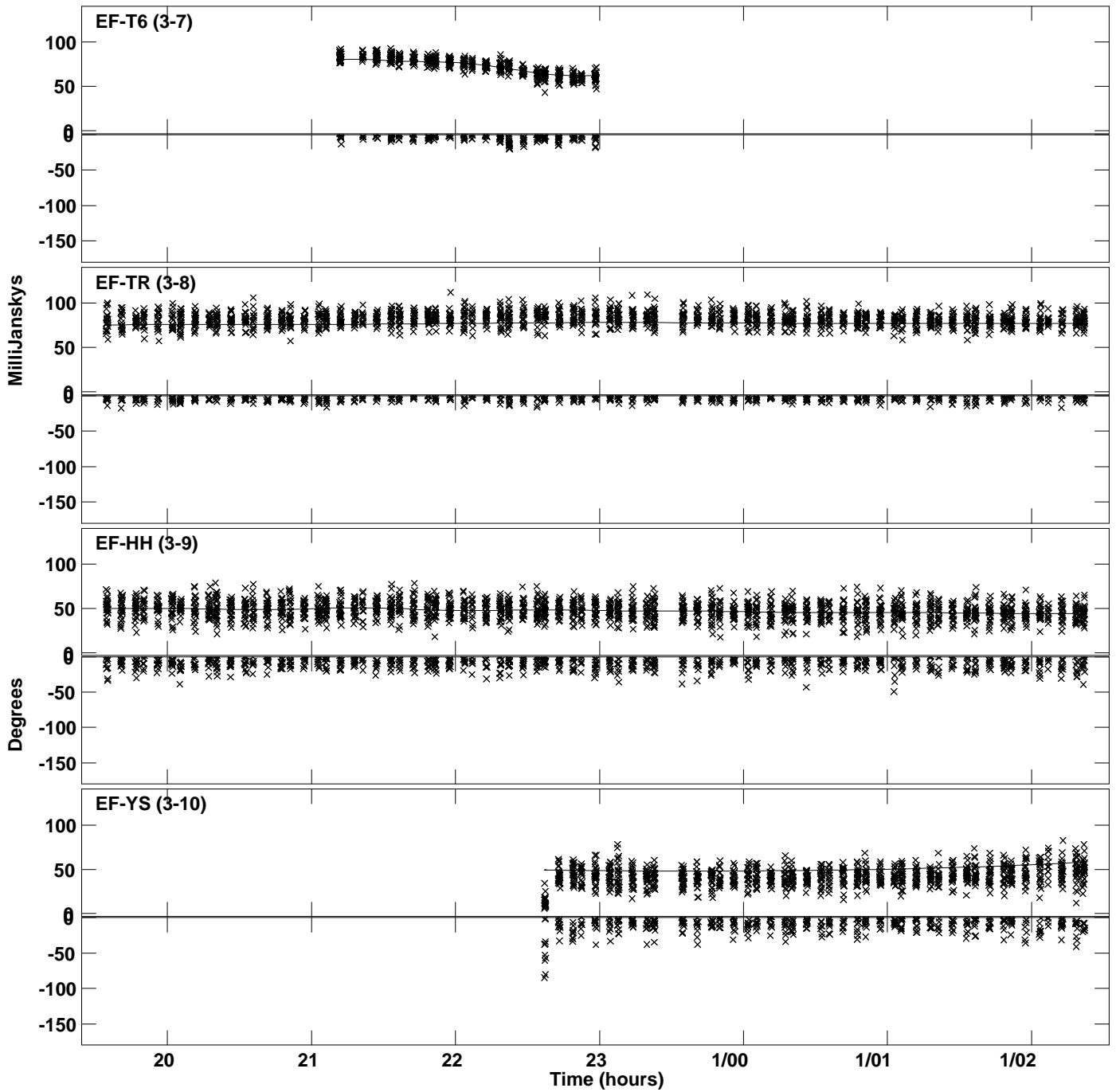
PLot file version 36 created 30-JUN-2023 14:25:31
Amplitude andPhase vs Time for J191142+1952.MULTI.1 CL # 3
IF 4 CHAN 1 STK RR of J191142+1952.ICL001.3



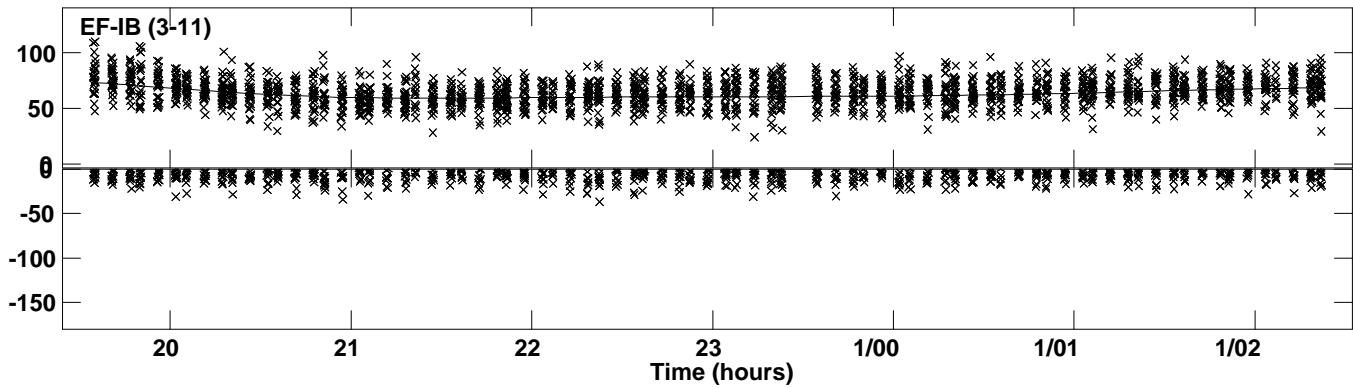
Plot file version 37 created 30-JUN-2023 14:25:31
Amplitude andPhase vs Time for J191142+1952.MULTI.1 CL # 3
IF 5 CHAN 1 STK RR of J191142+1952.ICL001.3



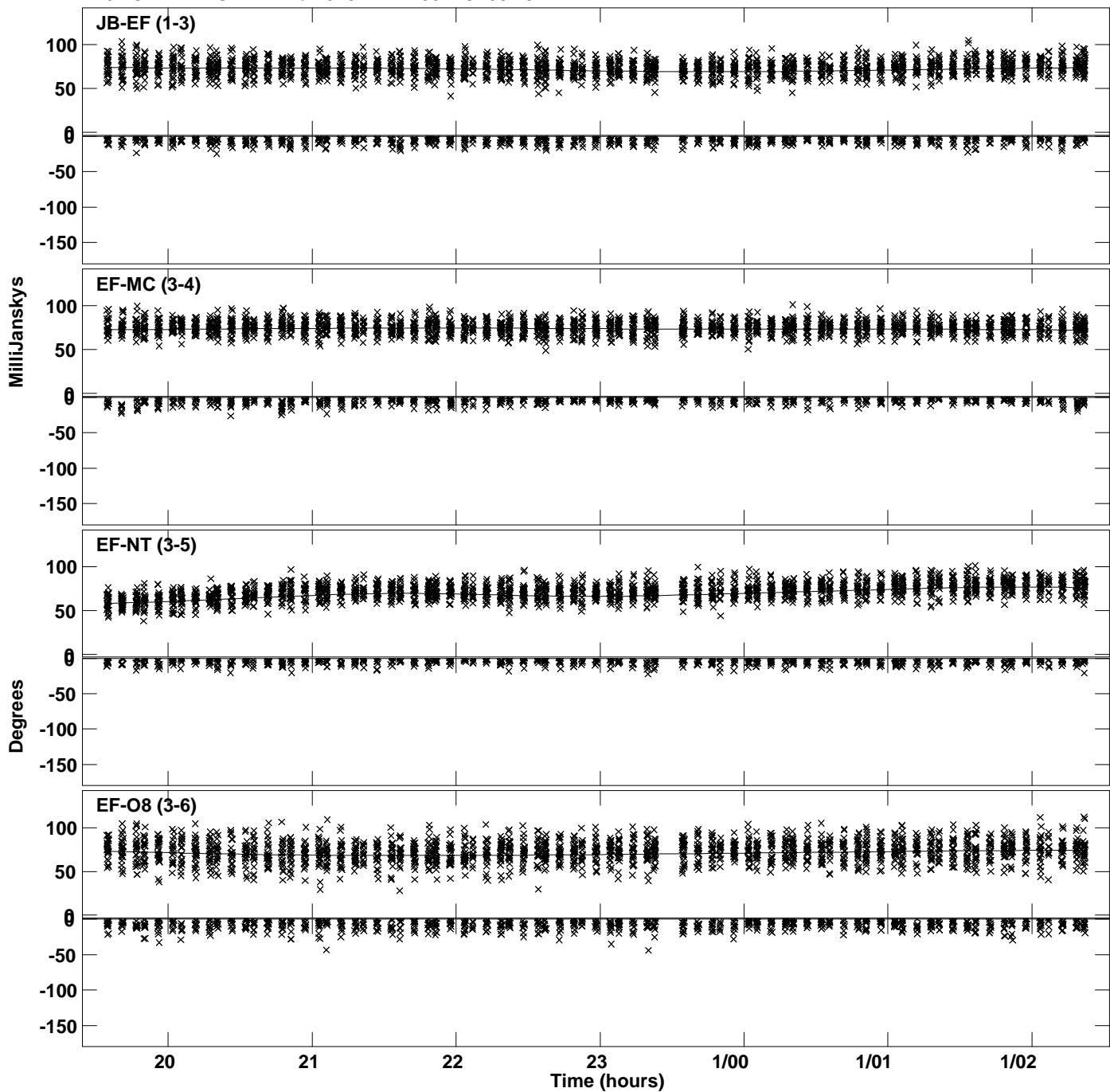
PLot file version 38 created 30-JUN-2023 14:25:31
Amplitude andPhase vs Time for J191142+1952.MULTI.1 CL # 3
IF 5 CHAN 1 STK RR of J191142+1952.ICL001.3



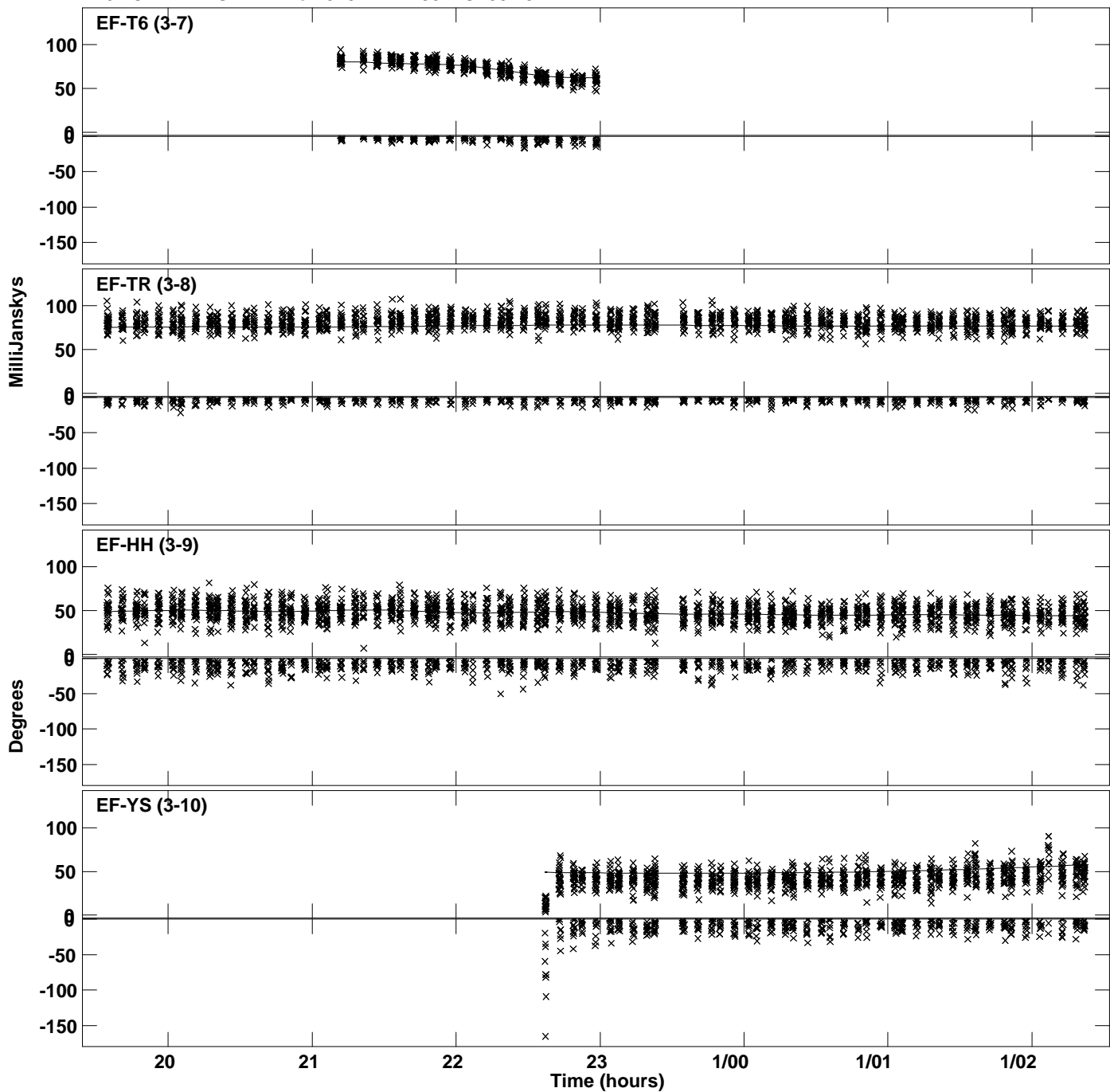
Plot file version 39 created 30-JUN-2023 14:25:31
Amplitude and Phase vs Time for J191142+1952.MULTI.1 CL # 3
IF 5 CHAN 1 STK RR of J191142+1952.ICL001.3



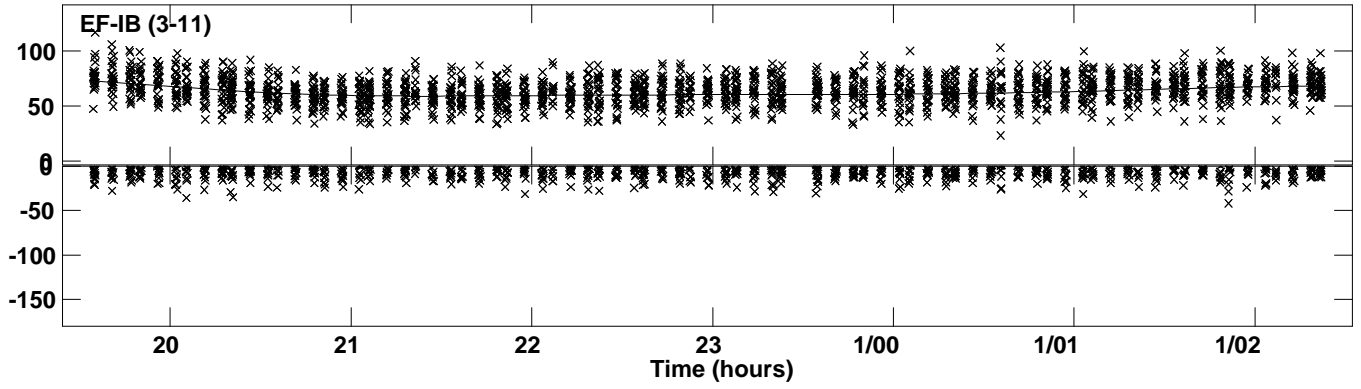
Plot file version 40 created 30-JUN-2023 14:25:31
Amplitude andPhase vs Time for J191142+1952.MULTI.1 CL # 3
IF 6 CHAN 1 STK RR of J191142+1952.ICL001.3



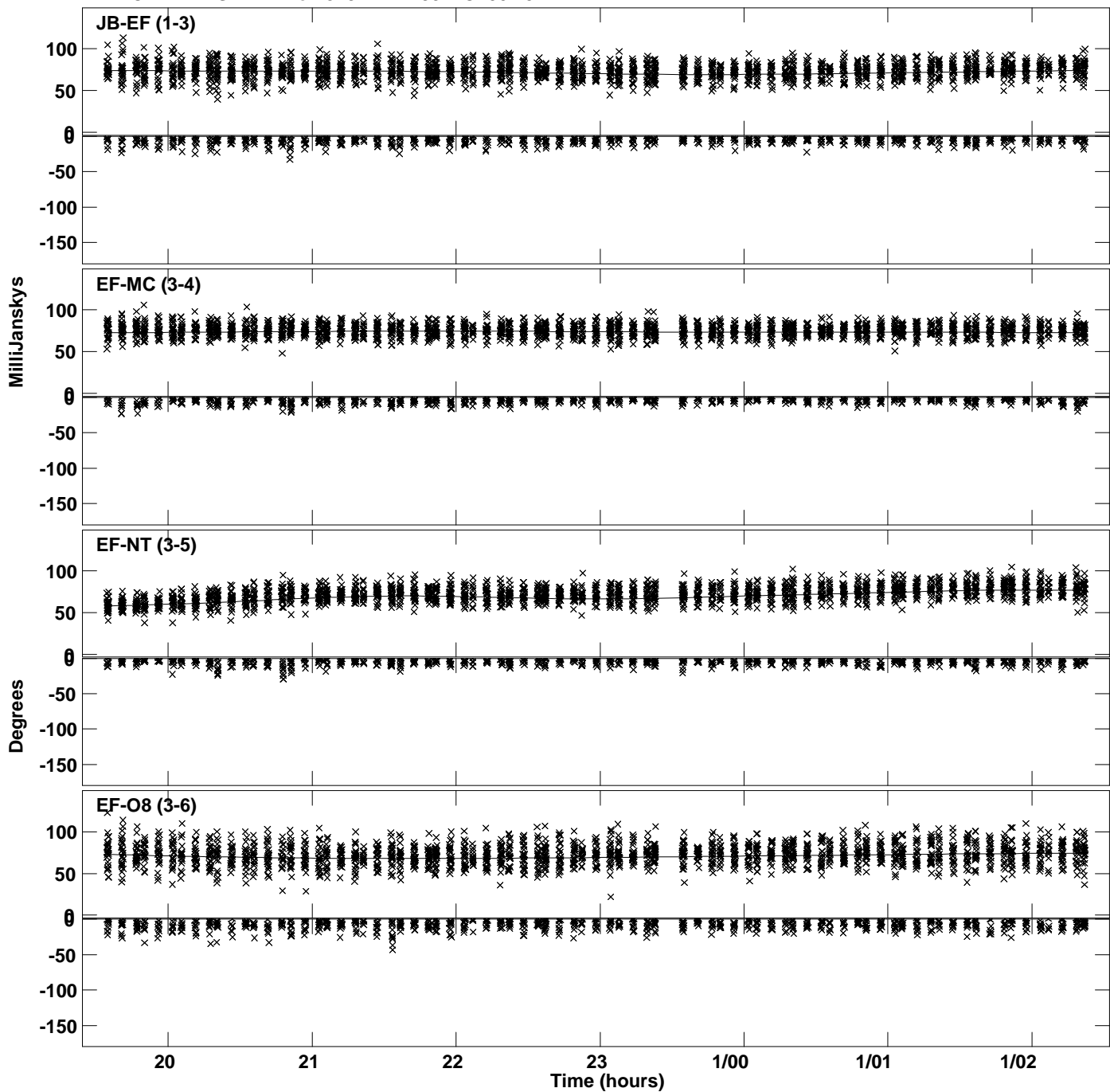
PLot file version 41 created 30-JUN-2023 14:25:31
Amplitude andPhase vs Time for J191142+1952.MULTI.1 CL # 3
IF 6 CHAN 1 STK RR of J191142+1952.ICL001.3



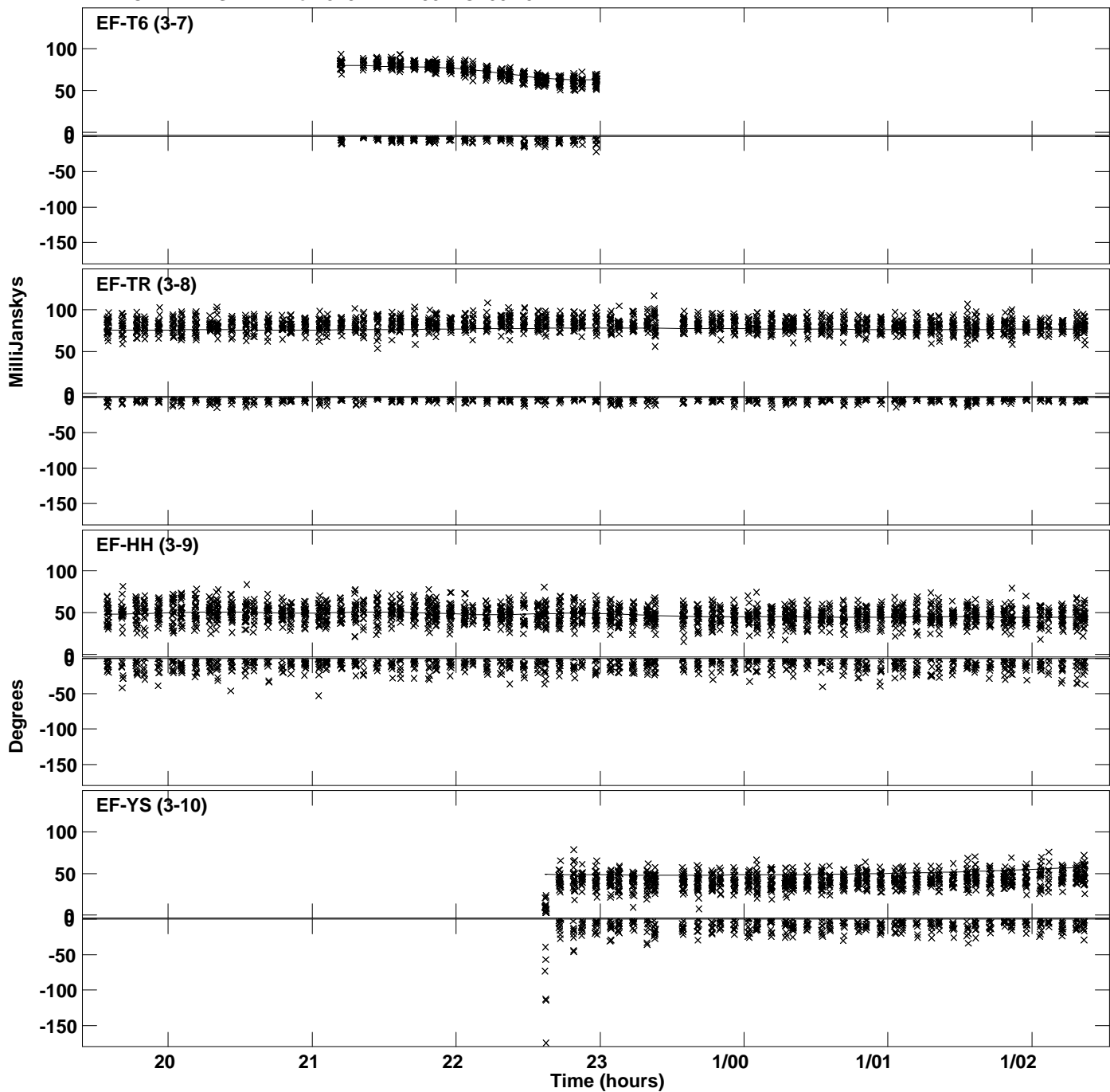
PLot file version 42 created 30-JUN-2023 14:25:31
Amplitude andPhase vs Time for J191142+1952.MULTI.1 CL # 3
IF 6 CHAN 1 STK RR of J191142+1952.ICL001.3



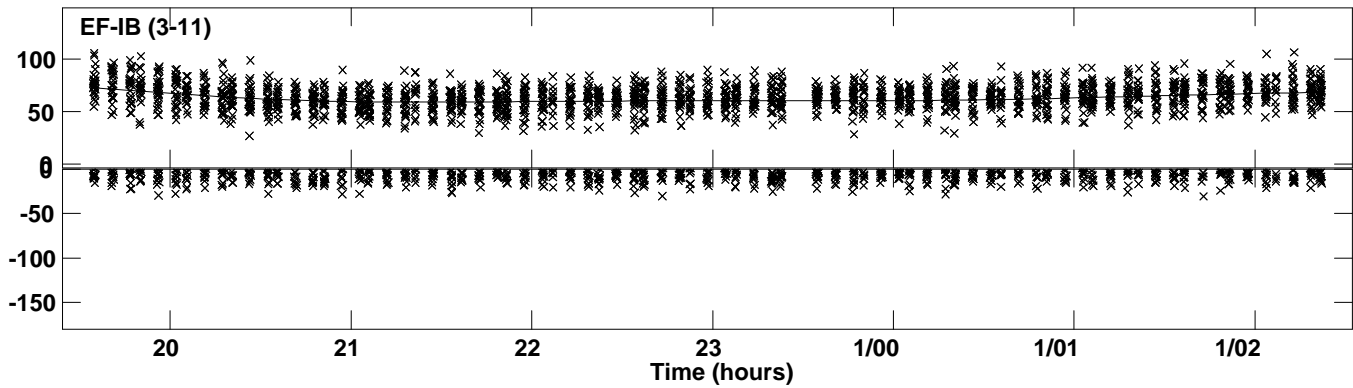
PLot file version 43 created 30-JUN-2023 14:25:32
Amplitude andPhase vs Time for J191142+1952.MULTI.1 CL # 3
IF 7 CHAN 1 STK RR of J191142+1952.ICL001.3



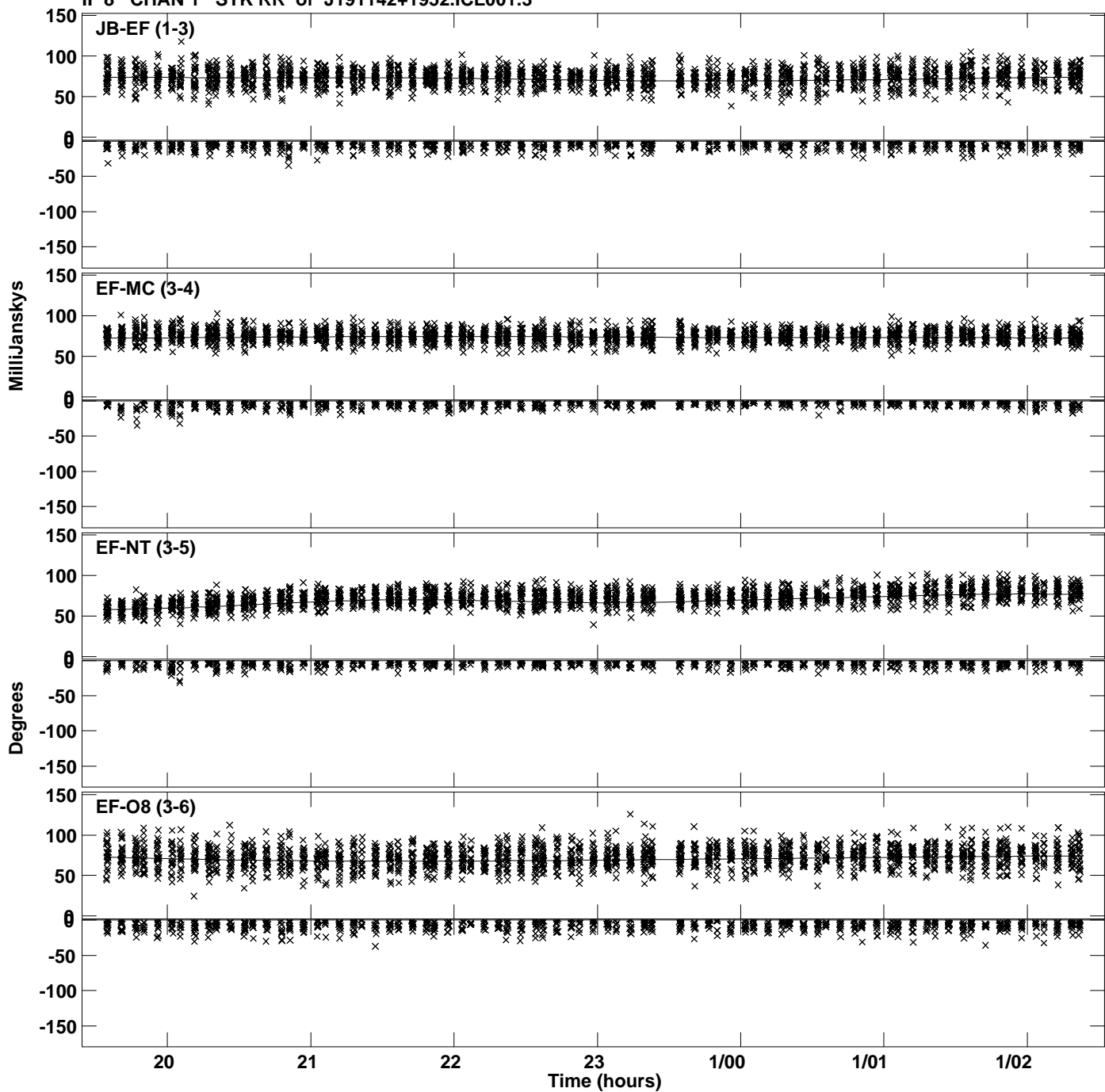
PLot file version 44 created 30-JUN-2023 14:25:32
Amplitude andPhase vs Time for J191142+1952.MULTI.1 CL # 3
IF 7 CHAN 1 STK RR of J191142+1952.ICL001.3



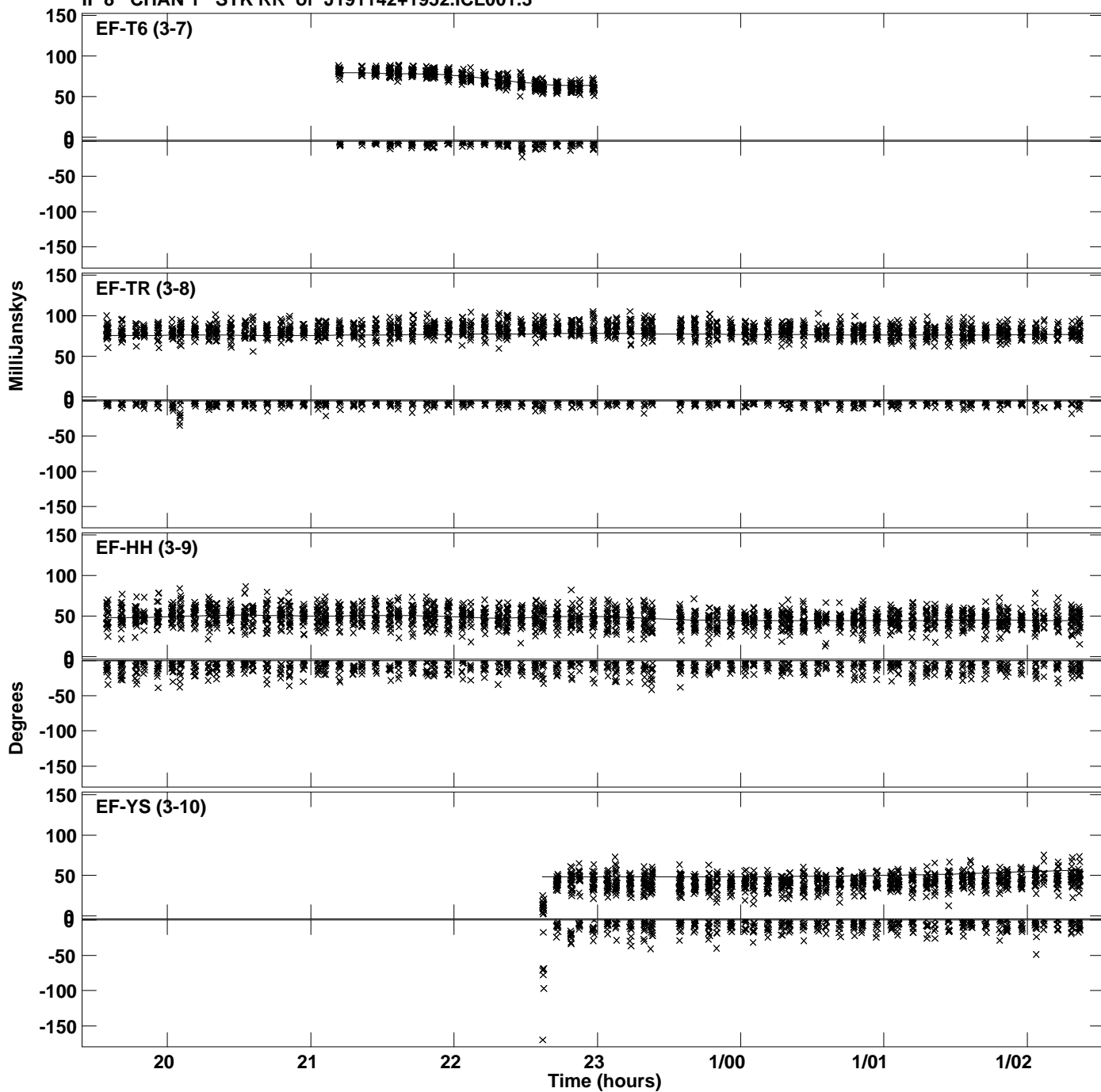
PLot file version 45 created 30-JUN-2023 14:25:32
Amplitude andPhase vs Time for J191142+1952.MULTI.1 CL # 3
IF 7 CHAN 1 STK RR of J191142+1952.ICL001.3



Plot file version 46 created 30-JUN-2023 14:25:32
Amplitude andPhase vs Time for J191142+1952.MULTI.1 CL # 3
IF 8 CHAN 1 STK RR of J191142+1952.ICL001.3



PLot file version 47 created 30-JUN-2023 14:25:32
Amplitude andPhase vs Time for J191142+1952.MULTI.1 CL # 3
IF 8 CHAN 1 STK RR of J191142+1952.ICL001.3



PLot file version 48 created 30-JUN-2023 14:25:32
Amplitude andPhase vs Time for J191142+1952.MULTI.1 CL # 3
IF 8 CHAN 1 STK RR of J191142+1952.ICL001.3

