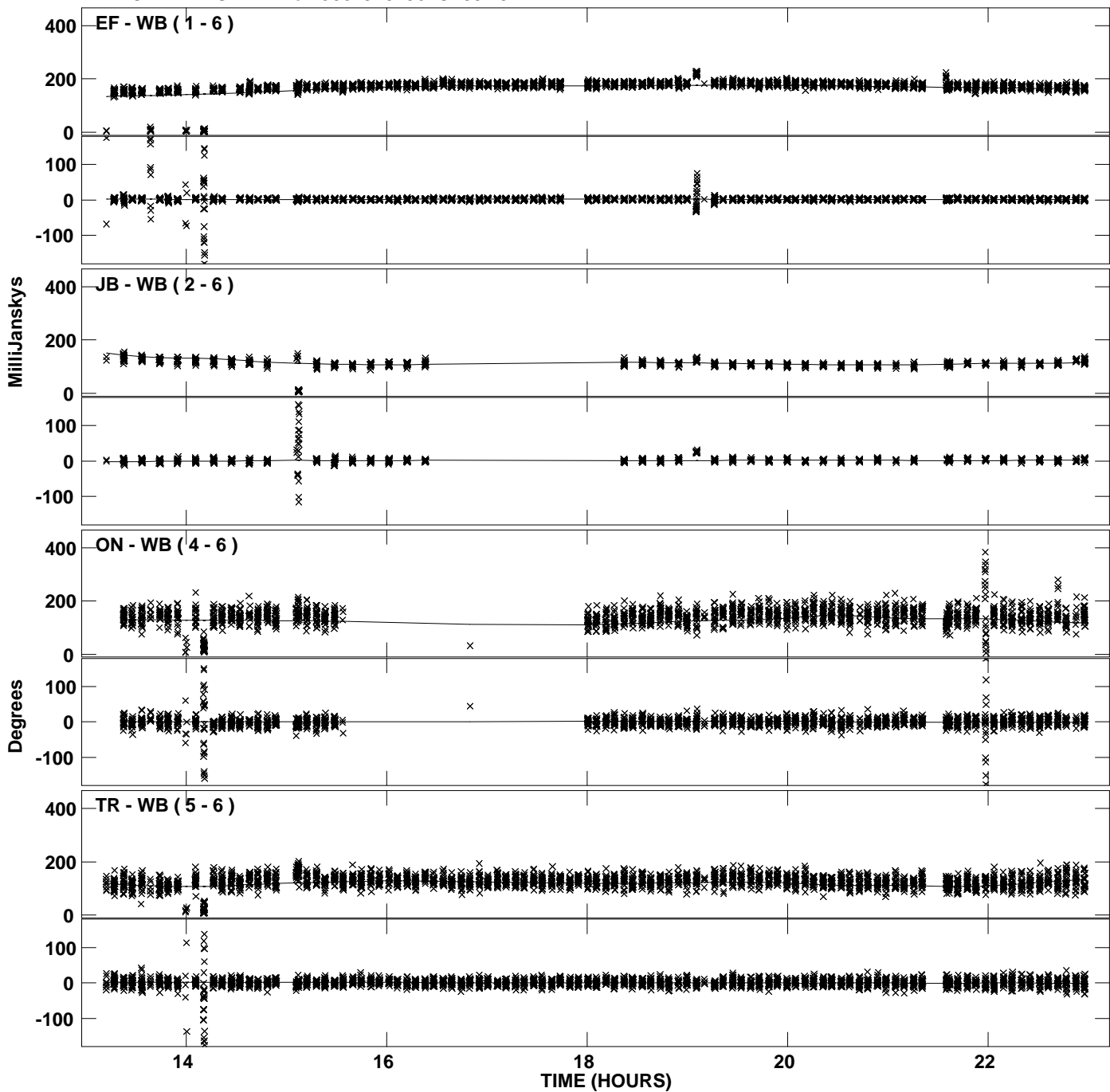
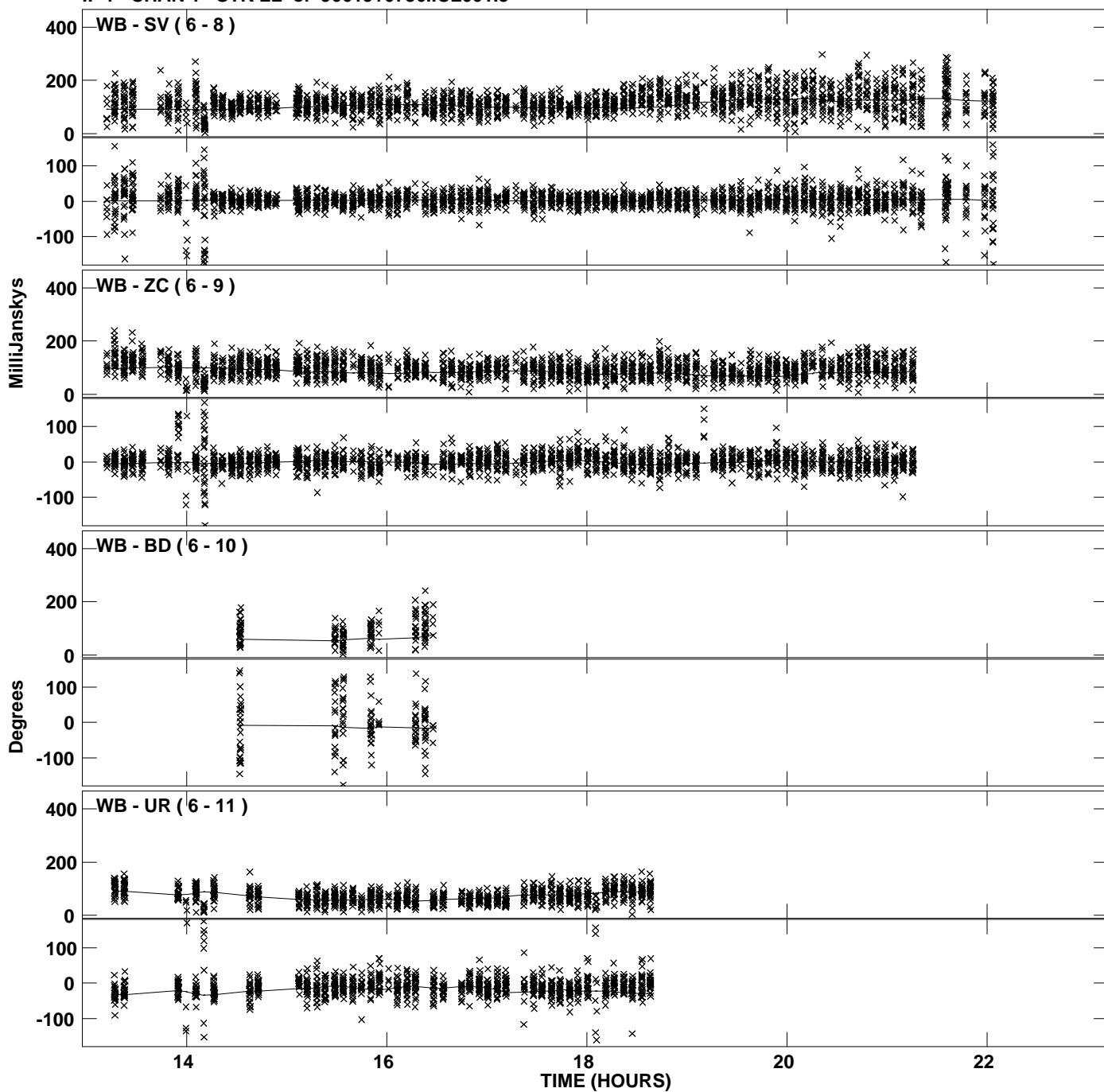


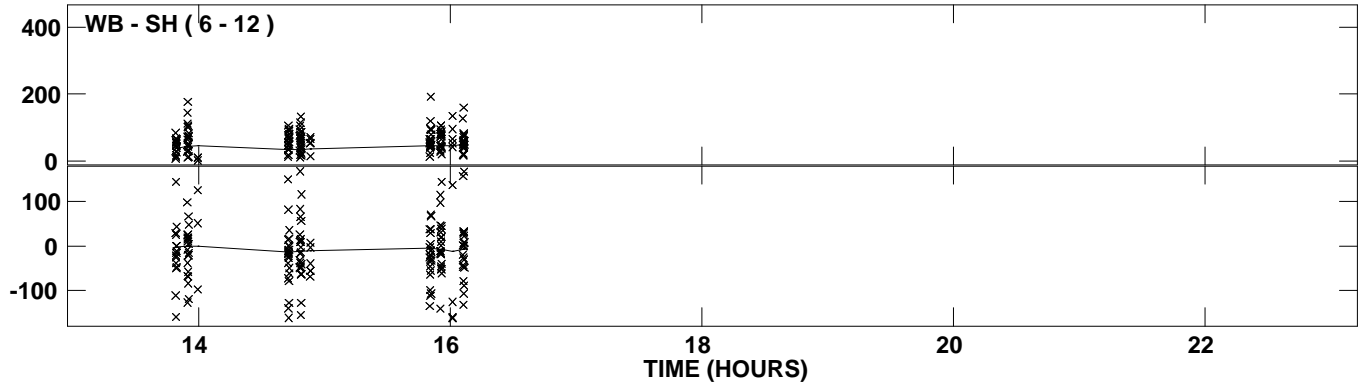
Plot file version 1 created 28-APR-2011 17:21:50
Amplitude andPhase vs Time for J0619+0736.MULTI.1 CL # 3
IF 1 CHAN 1 STK LL of J0619+0736.ICL001.3



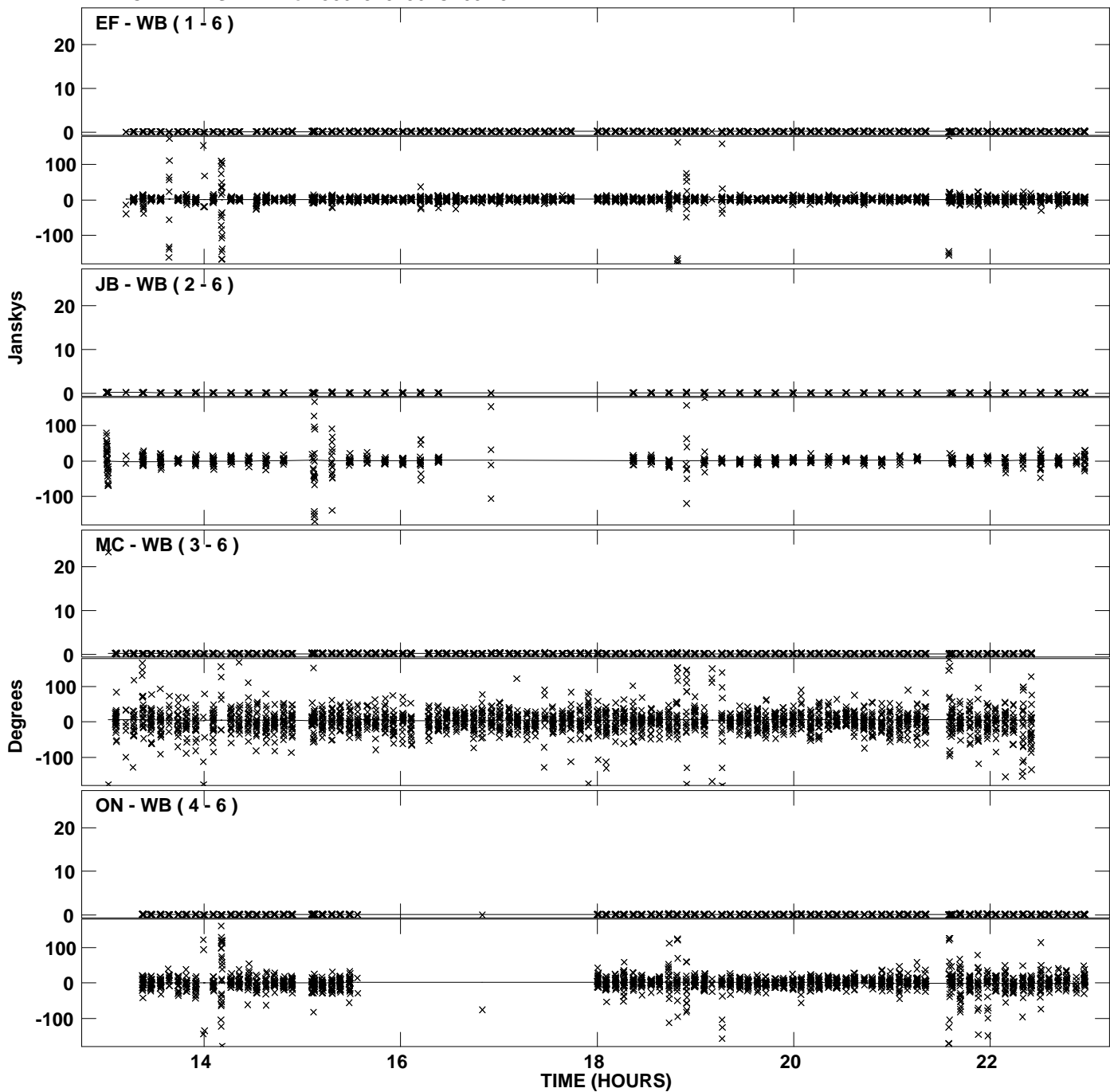
Plot file version 2 created 28-APR-2011 17:21:50
Amplitude andPhase vs Time for J0619+0736.MULTI.1 CL # 3
IF 1 CHAN 1 STK LL of J0619+0736.ICL001.3



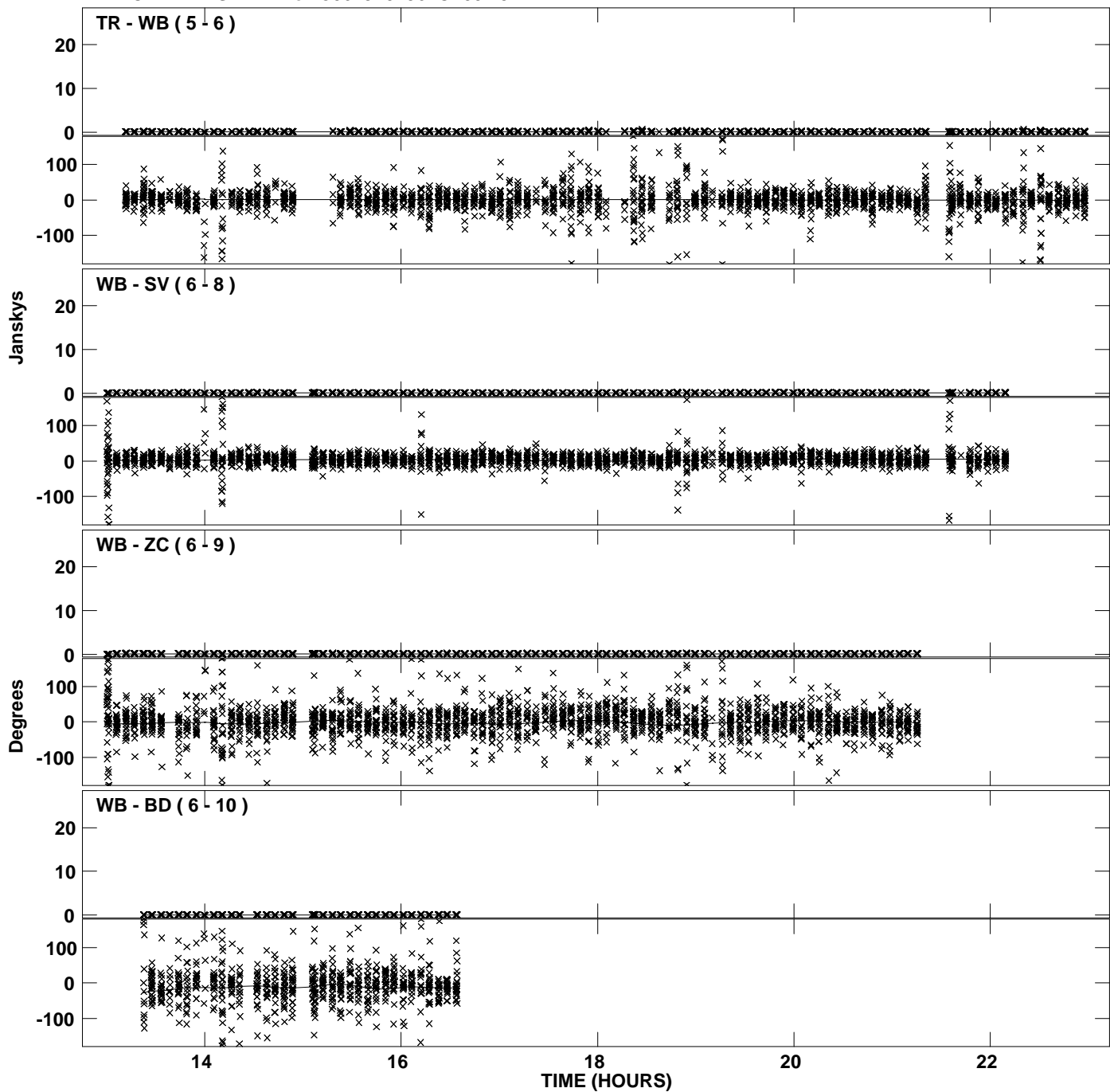
Plot file version 3 created 28-APR-2011 17:21:50
Amplitude and Phase vs Time for J0619+0736.MULTI.1 CL # 3
IF 1 CHAN 1 STK LL of J0619+0736.ICL001.3



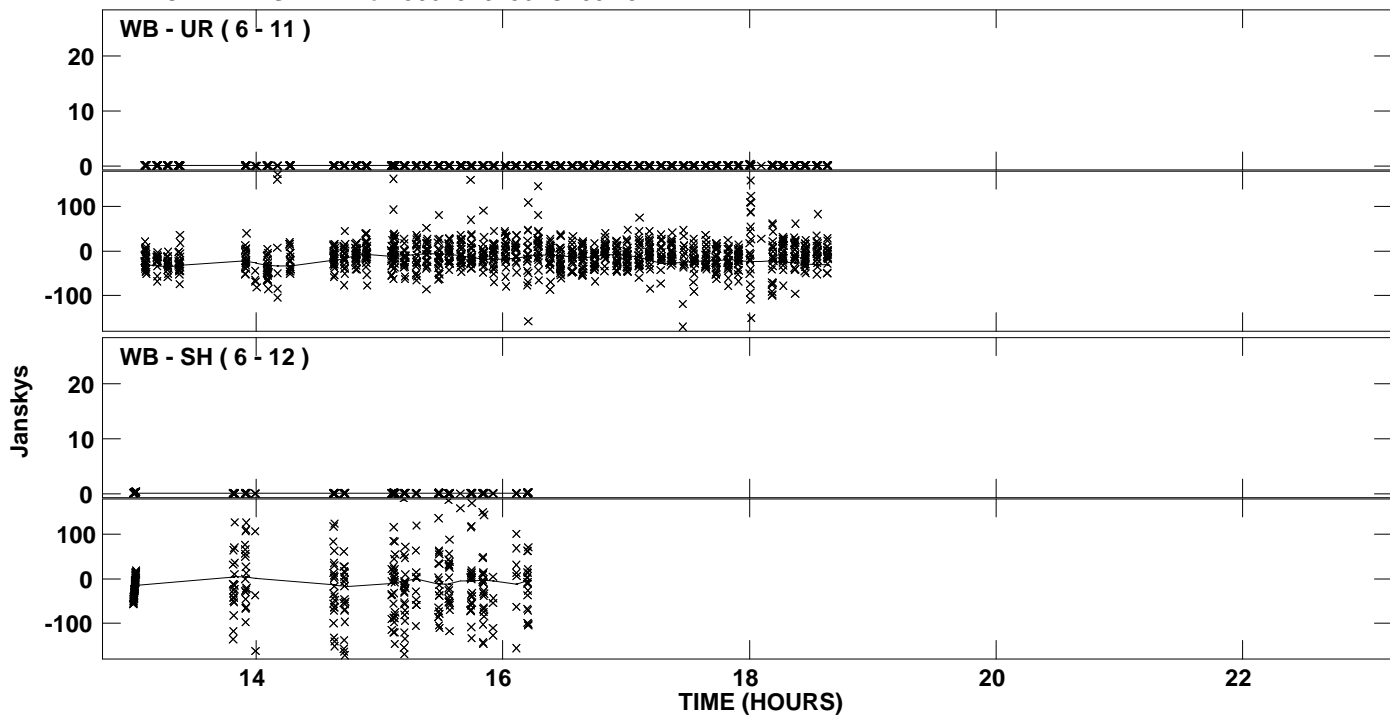
Plot file version 4 created 28-APR-2011 17:22:02
Amplitude and Phase vs Time for J0619+0736.MULTI.1 CL # 3
IF 2 CHAN 1 STK LL of J0619+0736.ICL001.3



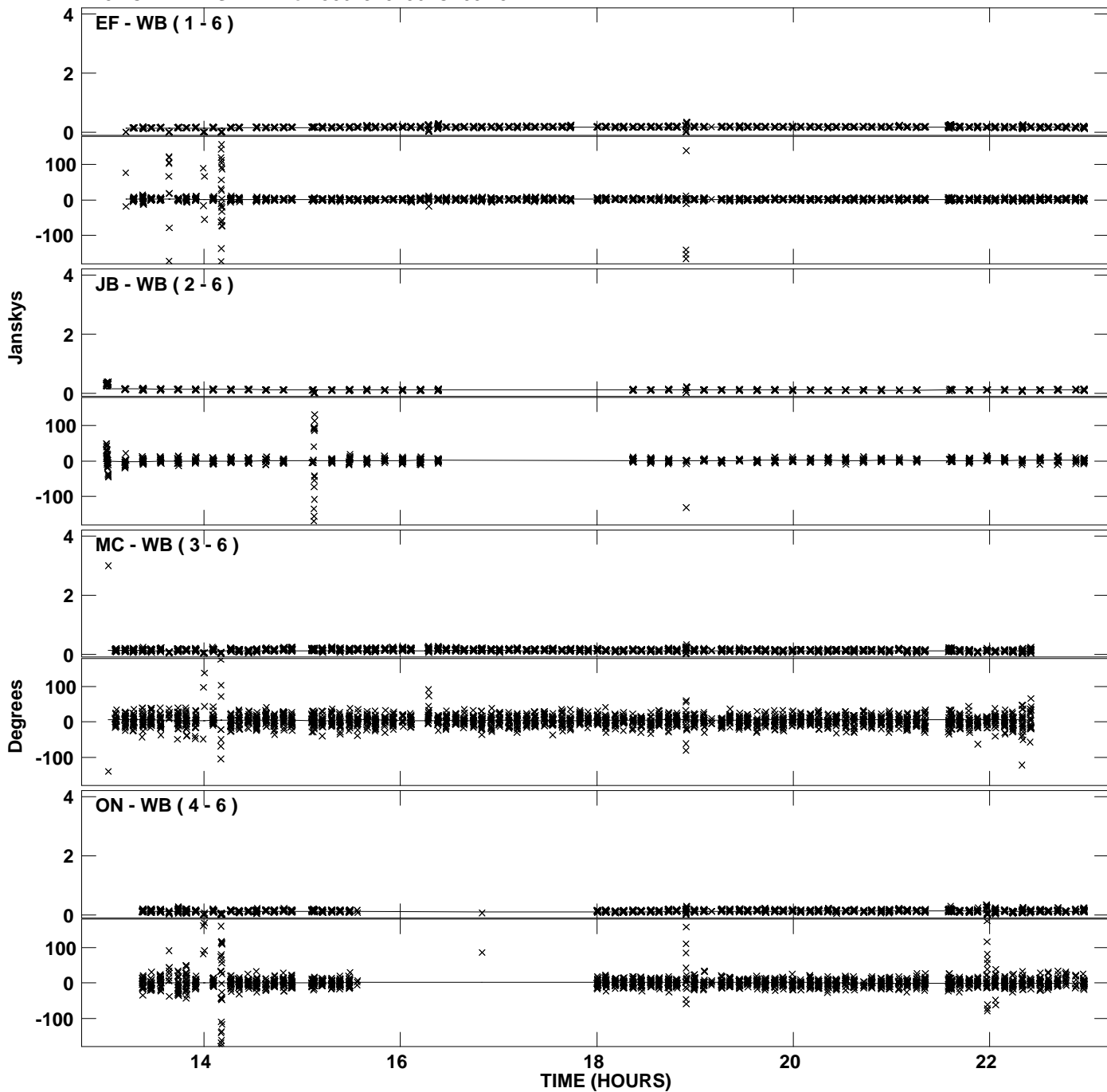
Plot file version 5 created 28-APR-2011 17:22:02
Amplitude and Phase vs Time for J0619+0736.MULTI.1 CL # 3
IF 2 CHAN 1 STK LL of J0619+0736.ICL001.3



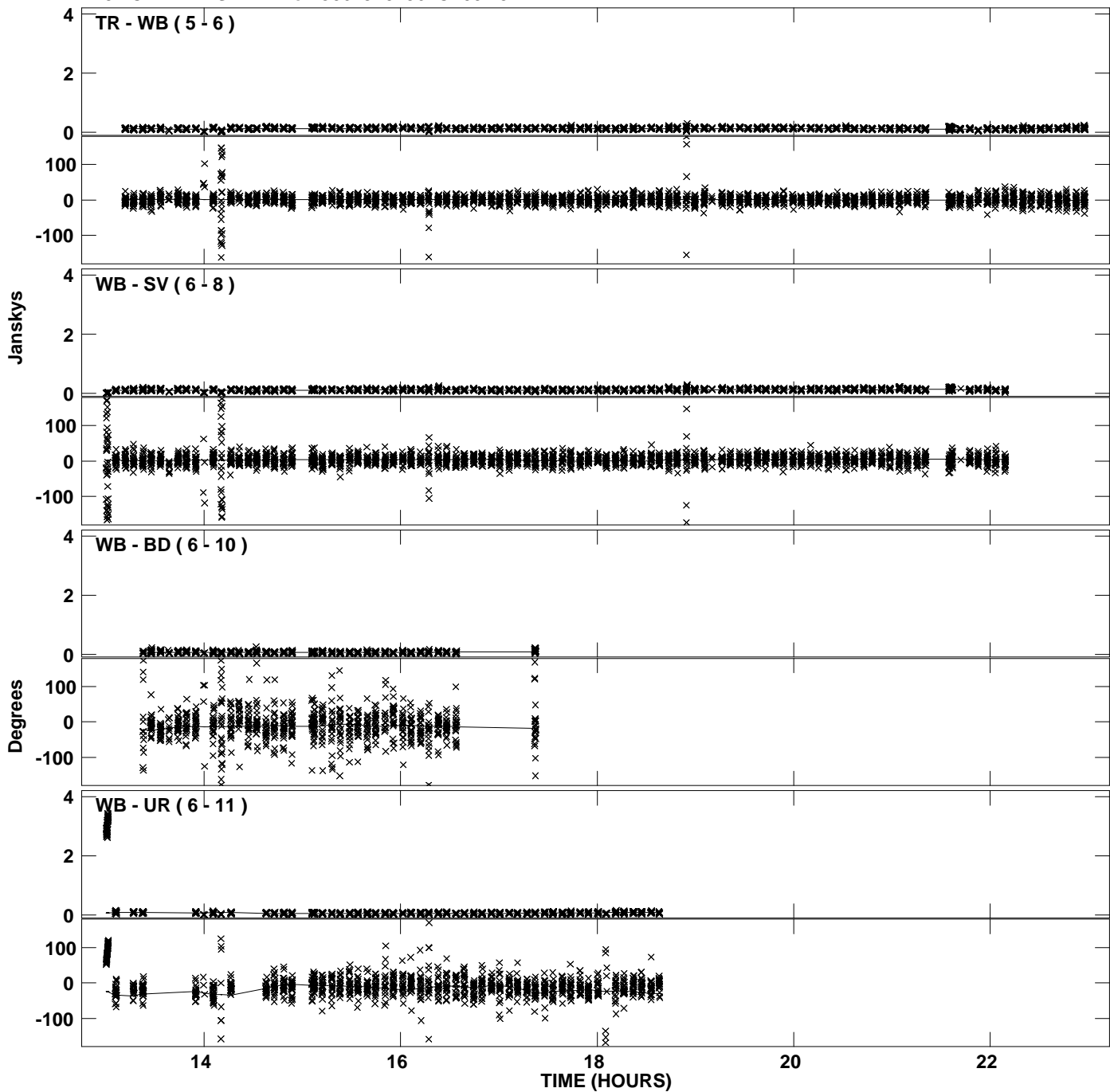
Plot file version 6 created 28-APR-2011 17:22:02
Amplitude andPhase vs Time for J0619+0736.MULTI.1 CL # 3
IF 2 CHAN 1 STK LL of J0619+0736.ICL001.3



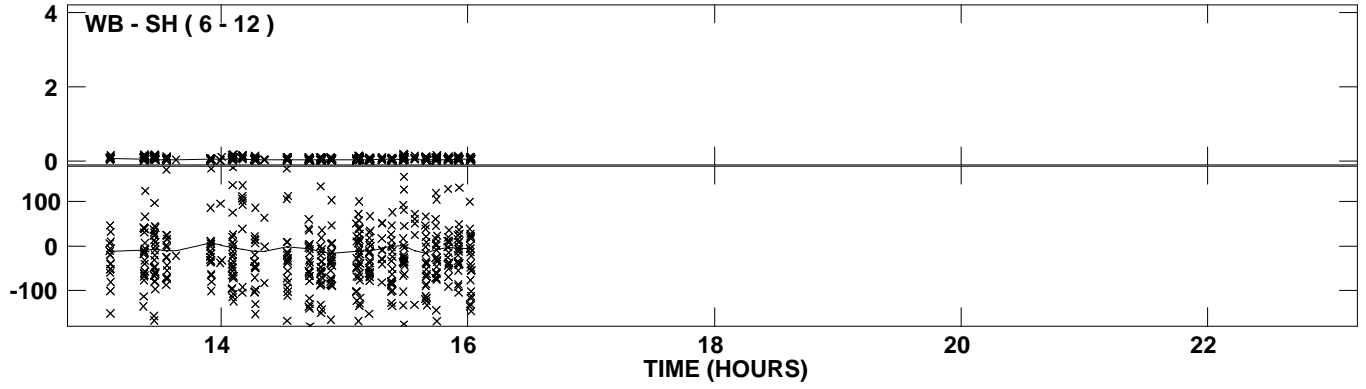
Plot file version 7 created 28-APR-2011 17:22:13
Amplitude and Phase vs Time for J0619+0736.MULTI.1 CL # 3
IF 3 CHAN 1 STK LL of J0619+0736.ICL001.3



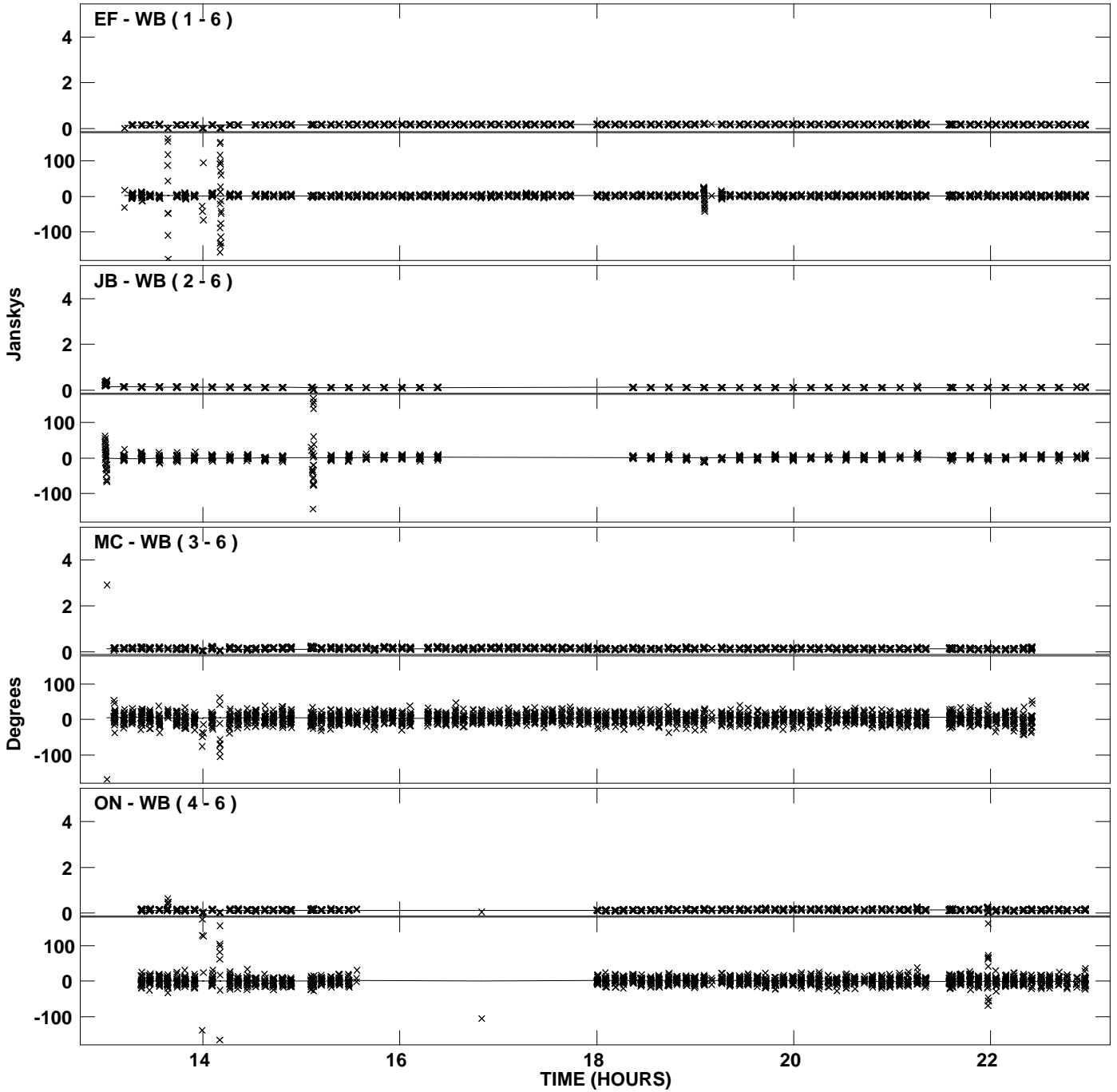
Plot file version 8 created 28-APR-2011 17:22:13
Amplitude and Phase vs Time for J0619+0736.MULTI.1 CL # 3
IF 3 CHAN 1 STK LL of J0619+0736.ICL001.3



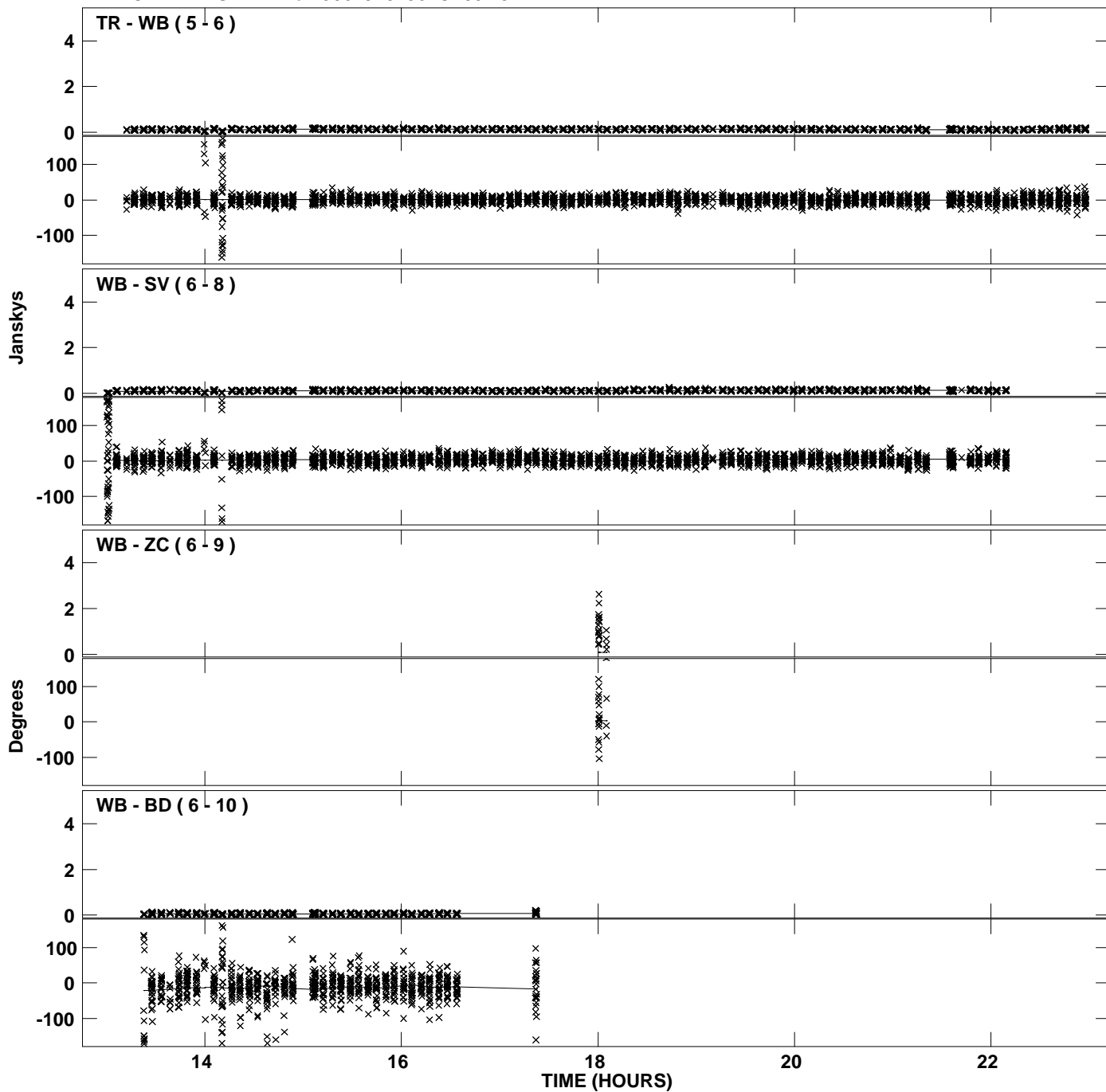
Plot file version 9 created 28-APR-2011 17:22:14
Amplitude andPhase vs Time for J0619+0736.MULTI.1 CL # 3
IF 3 CHAN 1 STK LL of J0619+0736.ICL001.3



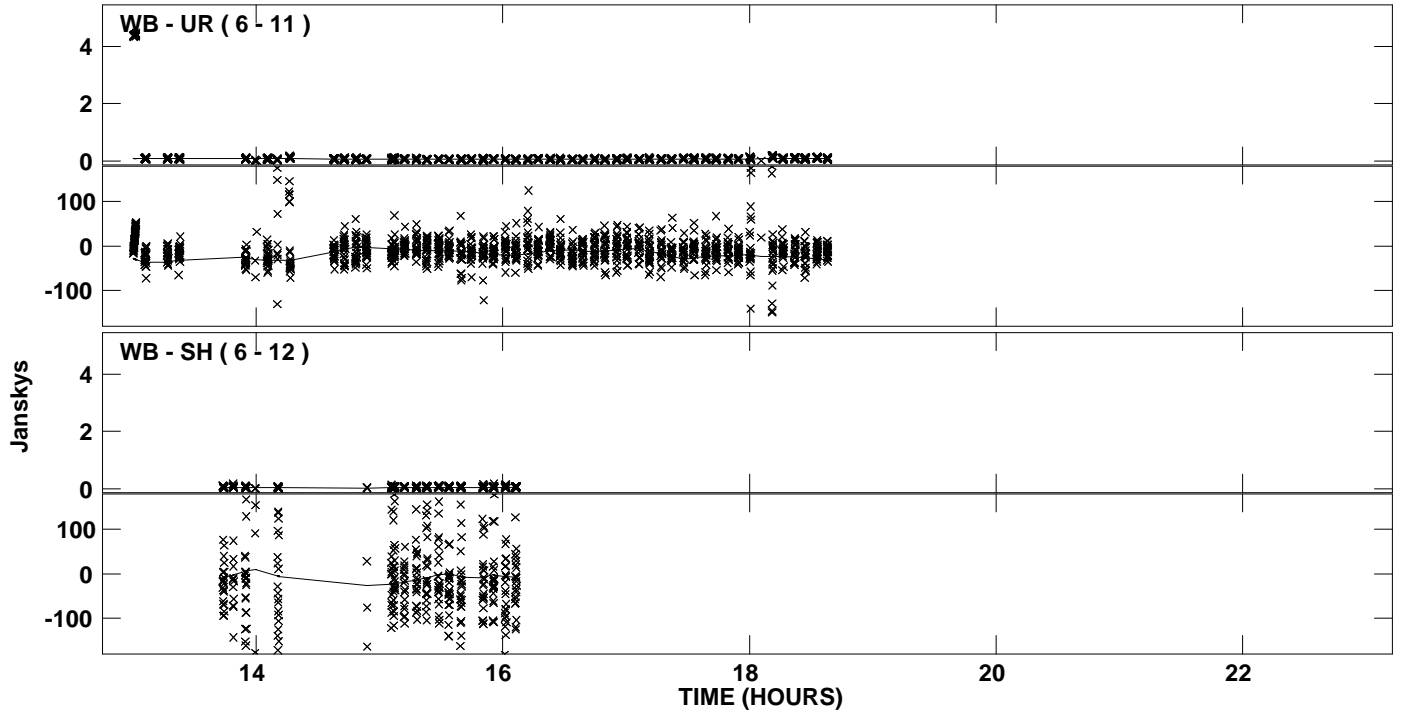
Plot file version 10 created 28-APR-2011 17:22:25
Amplitude and Phase vs Time for J0619+0736.MULTI.1 CL # 3
IF 4 CHAN 1 STK LL of J0619+0736.ICL001.3



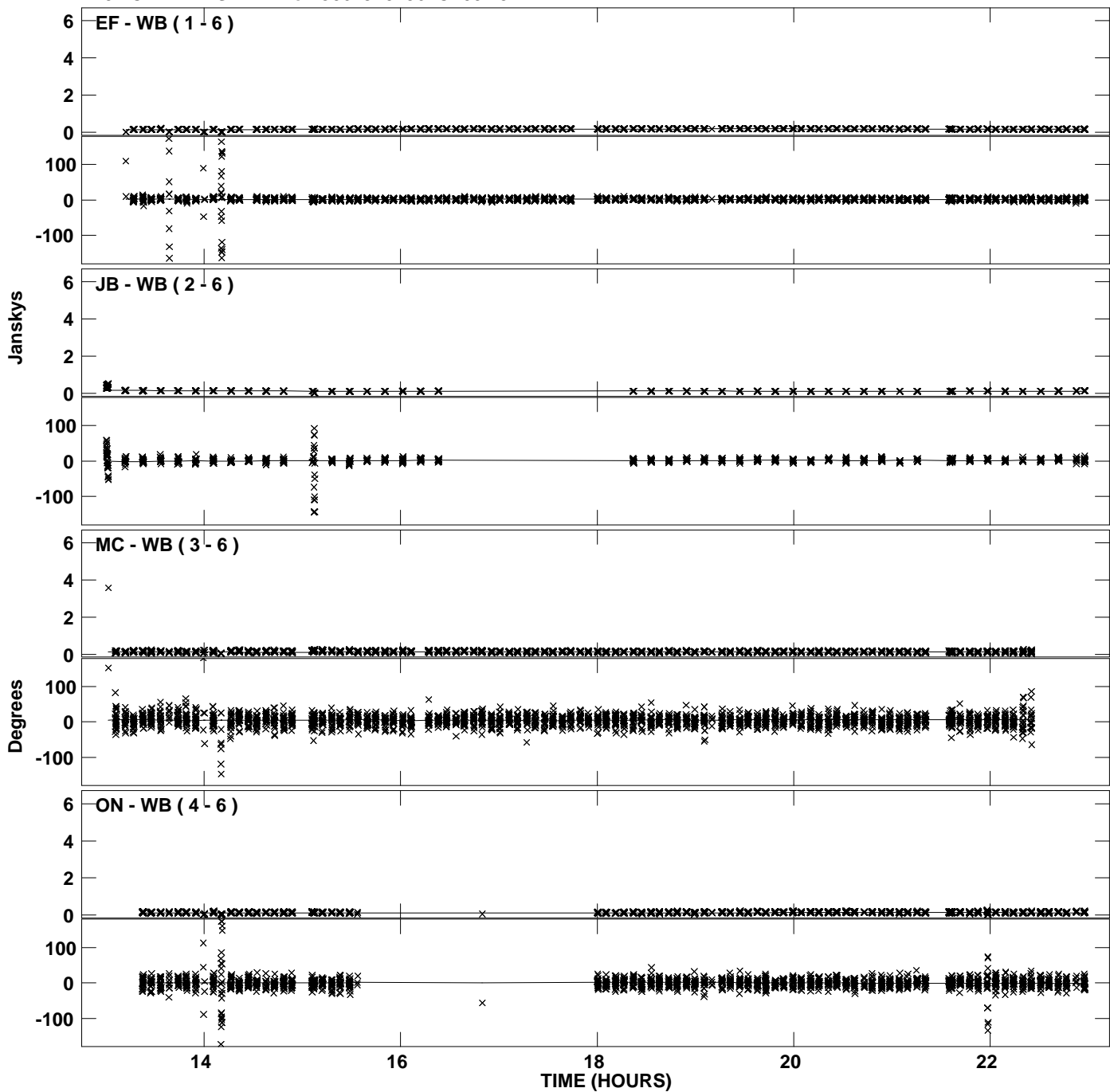
Plot file version 11 created 28-APR-2011 17:22:25
Amplitude and Phase vs Time for J0619+0736.MULTI.1 CL # 3
IF 4 CHAN 1 STK LL of J0619+0736.ICL001.3



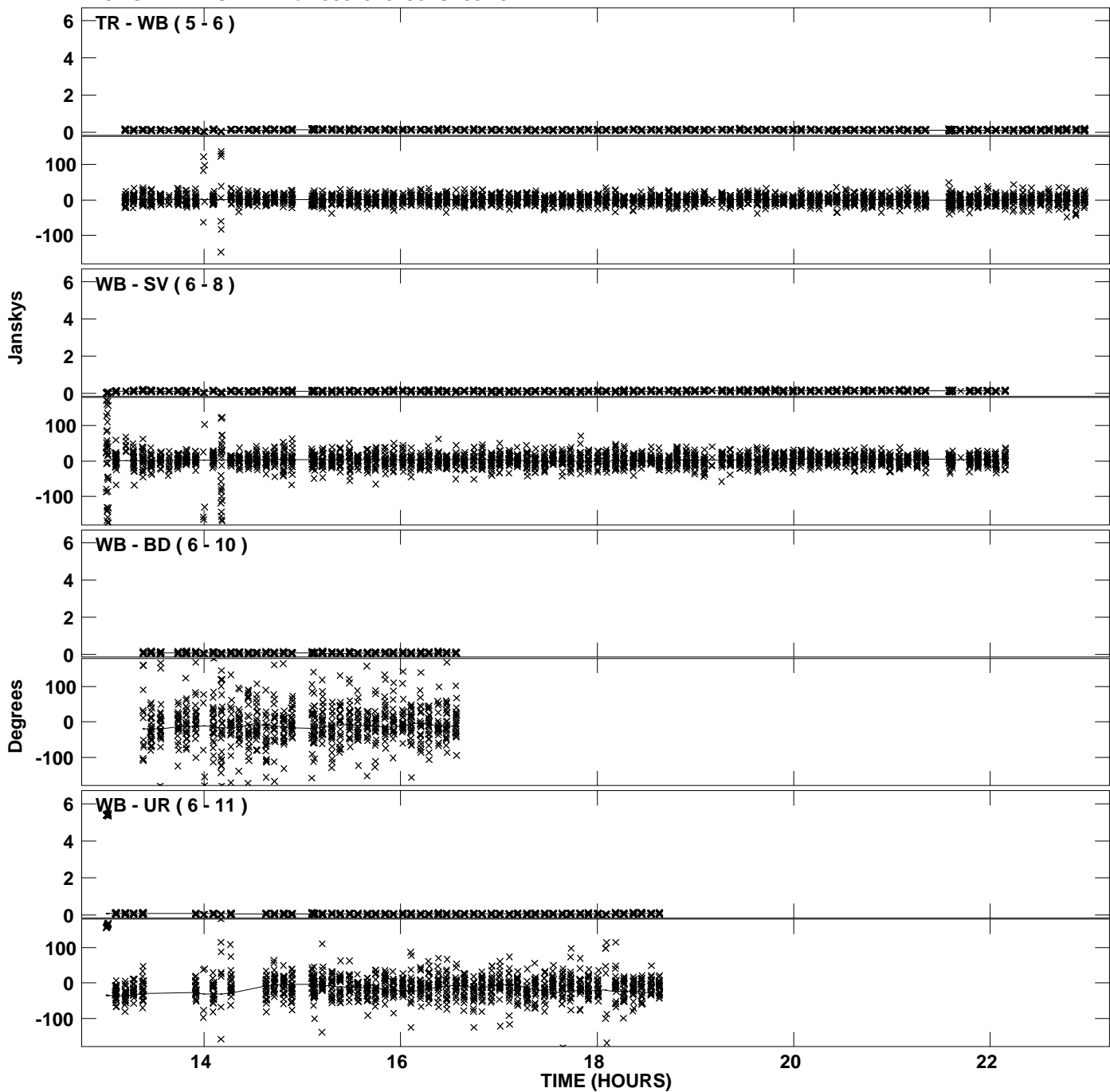
Plot file version 12 created 28-APR-2011 17:22:25
Amplitude and Phase vs Time for J0619+0736.MULTI.1 CL # 3
IF 4 CHAN 1 STK LL of J0619+0736.ICL001.3



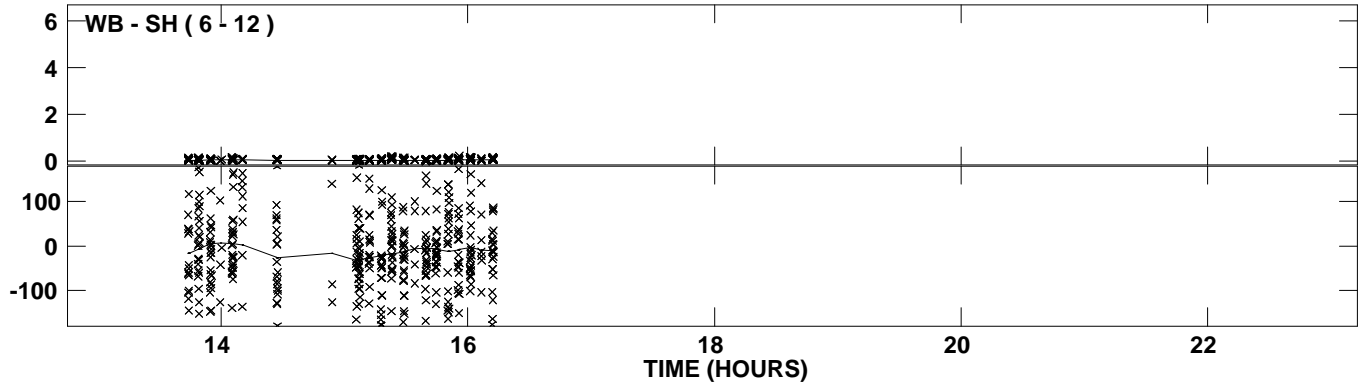
Plot file version 13 created 28-APR-2011 17:22:36
Amplitude and Phase vs Time for J0619+0736.MULTI.1 CL # 3
IF 5 CHAN 1 STK LL of J0619+0736.ICL001.3



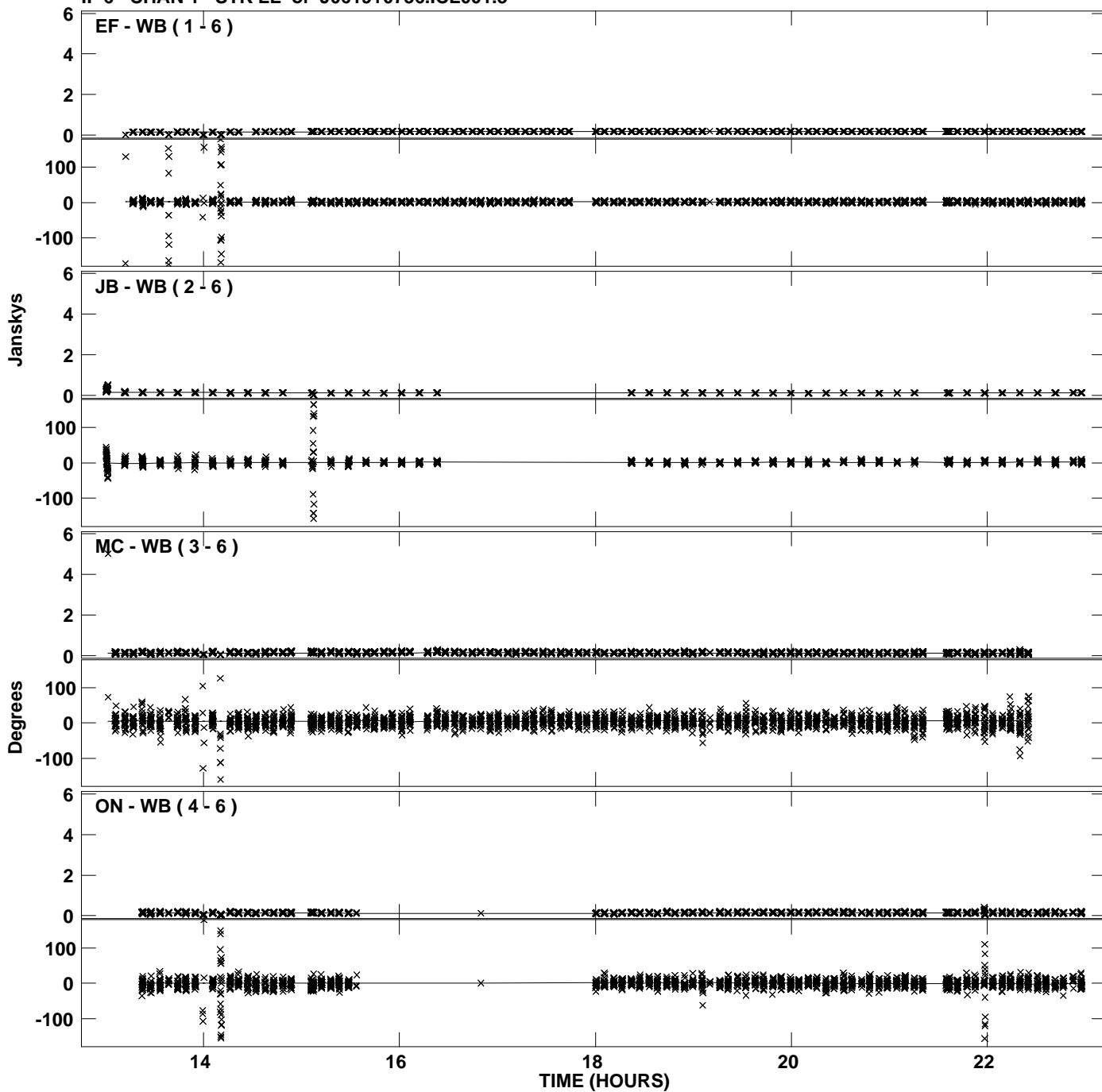
Plot file version 14 created 28-APR-2011 17:22:36
Amplitude and Phase vs Time for J0619+0736.MULTI.1 CL # 3
IF 5 CHAN 1 STK LL of J0619+0736.ICL001.3



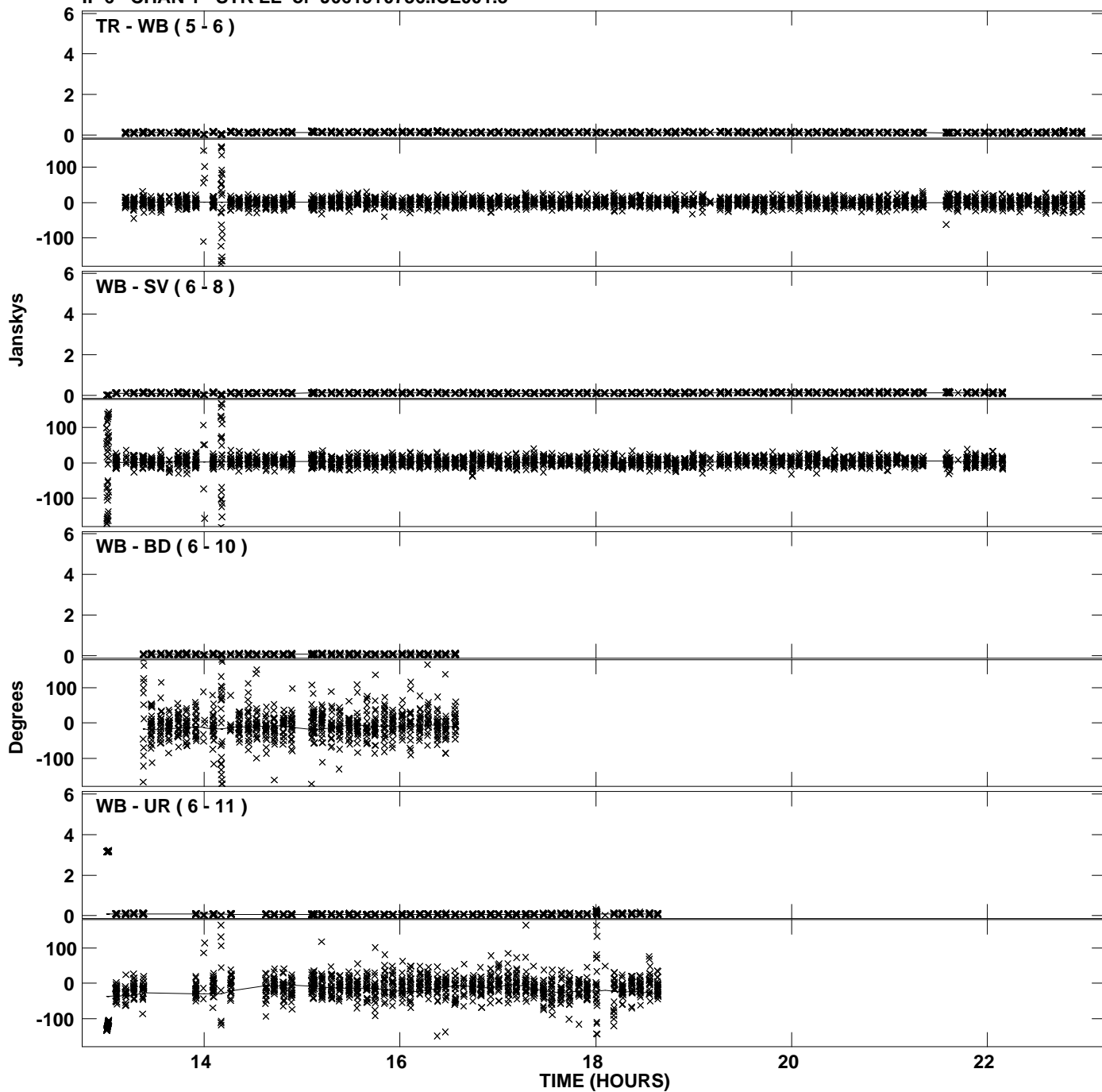
PLot file version 15 created 28-APR-2011 17:22:36
Amplitude andPhase vs Time for J0619+0736.MULTI.1 CL # 3
IF 5 CHAN 1 STK LL of J0619+0736.ICL001.3



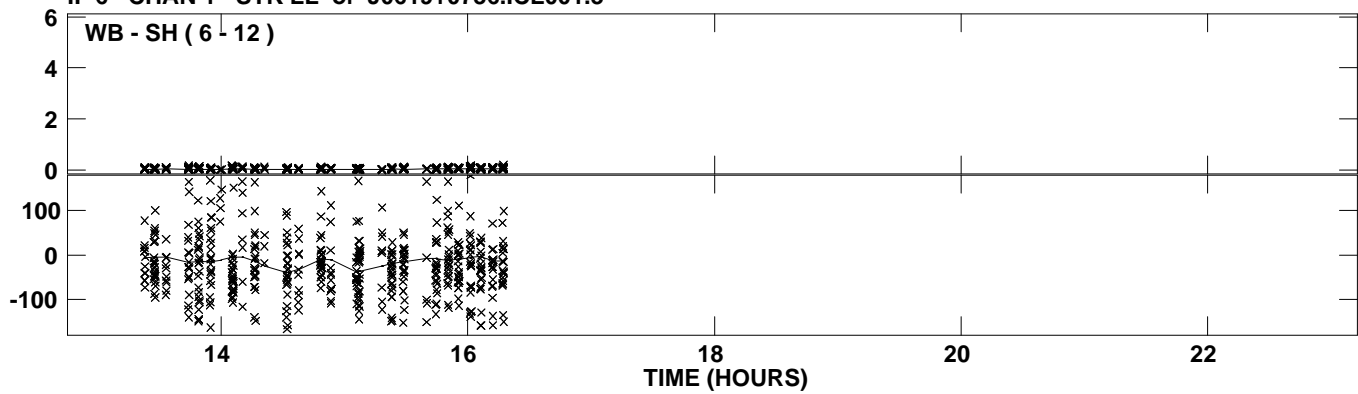
Plot file version 16 created 28-APR-2011 17:22:47
Amplitude and Phase vs Time for J0619+0736.MULTI.1 CL # 3
IF 6 CHAN 1 STK LL of J0619+0736.ICL001.3



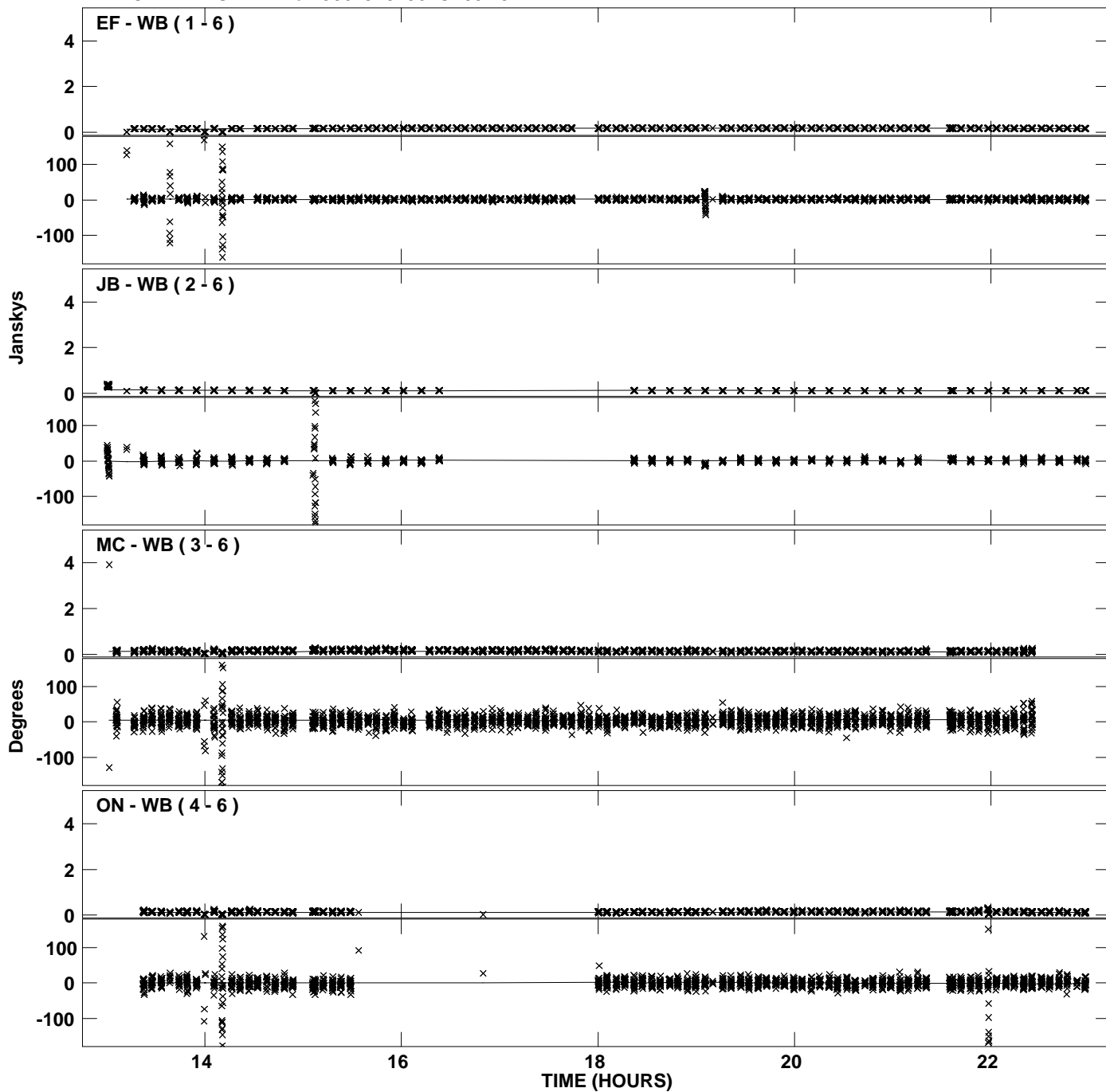
Plot file version 17 created 28-APR-2011 17:22:47
Amplitude and Phase vs Time for J0619+0736.MULTI.1 CL # 3
IF 6 CHAN 1 STK LL of J0619+0736.ICL001.3



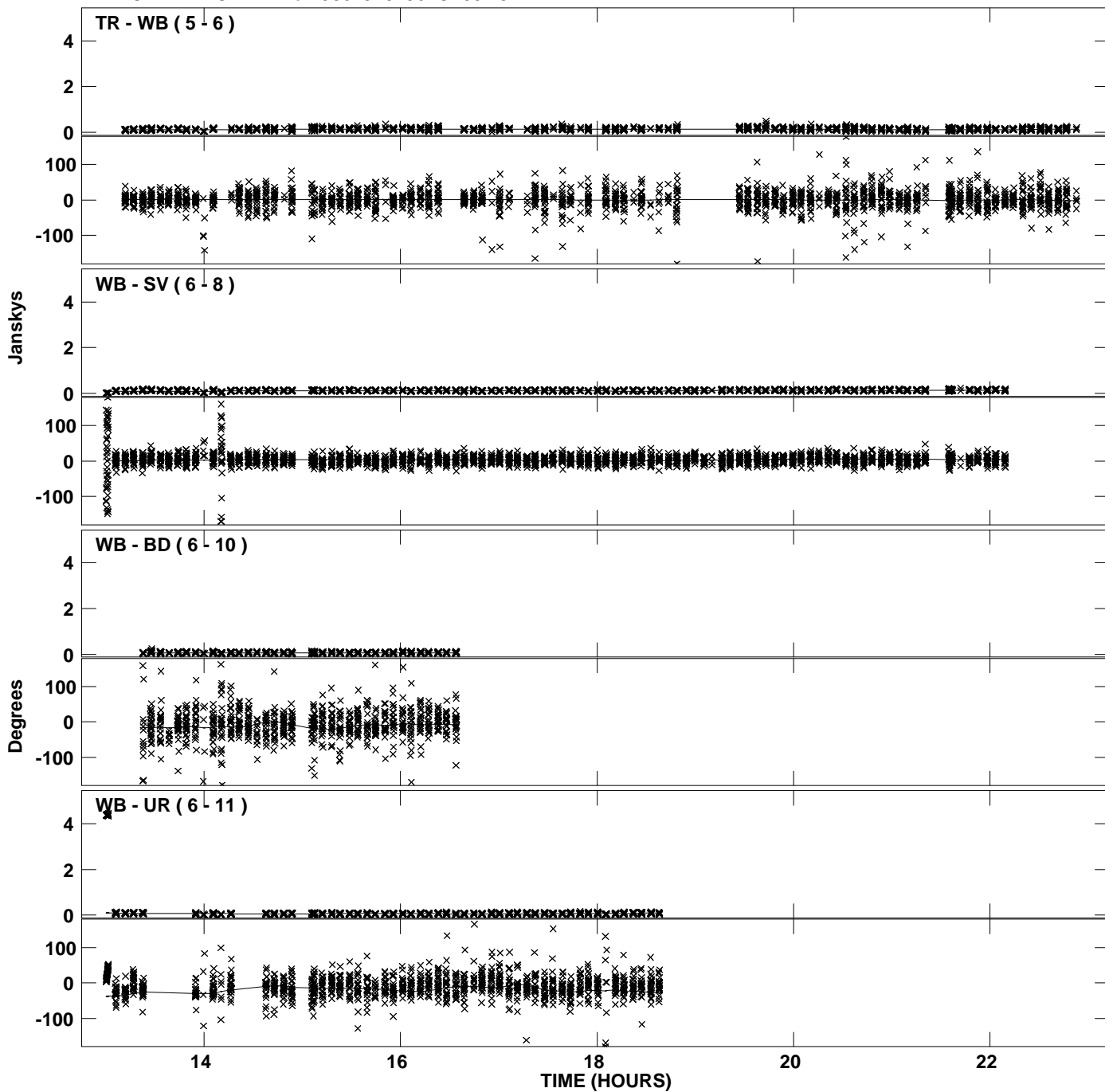
Plot file version 18 created 28-APR-2011 17:22:47
Amplitude andPhase vs Time for J0619+0736.MULTI.1 CL # 3
IF 6 CHAN 1 STK LL of J0619+0736.ICL001.3



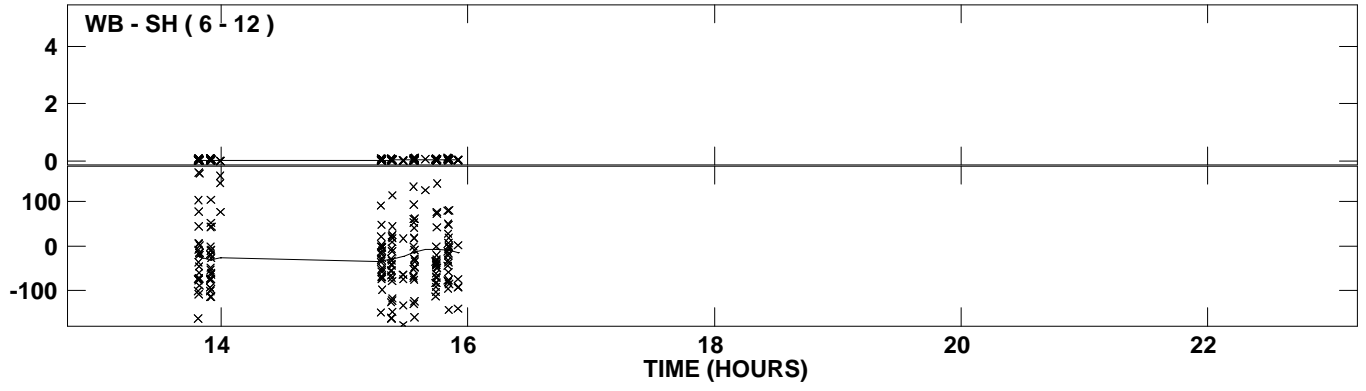
Plot file version 19 created 28-APR-2011 17:22:58
Amplitude andPhase vs Time for J0619+0736.MULTI.1 CL # 3
IF 7 CHAN 1 STK LL of J0619+0736.ICL001.3



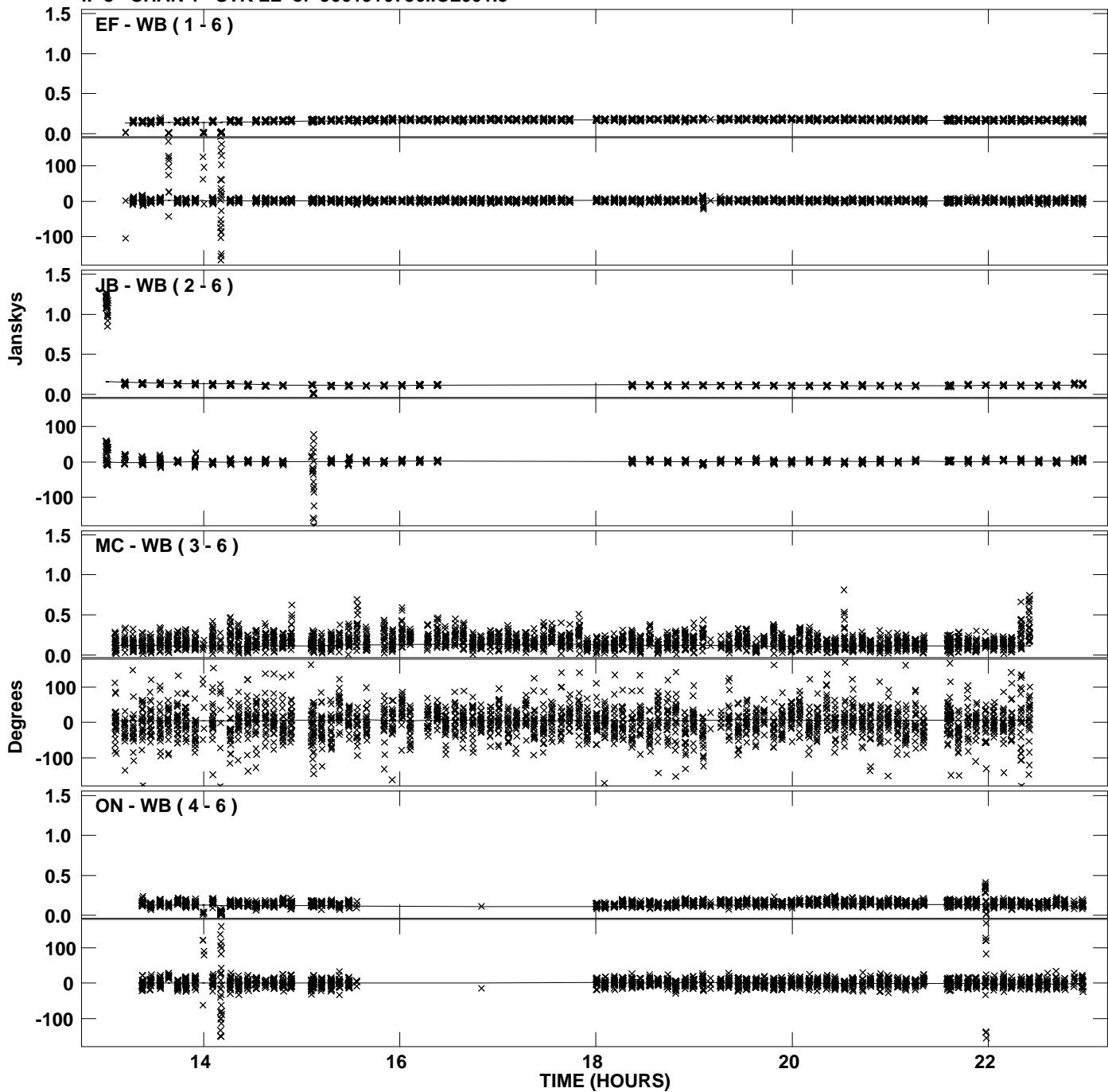
Plot file version 20 created 28-APR-2011 17:22:58
Amplitude and Phase vs Time for J0619+0736.MULTI.1 CL # 3
IF 7 CHAN 1 STK LL of J0619+0736.ICL001.3



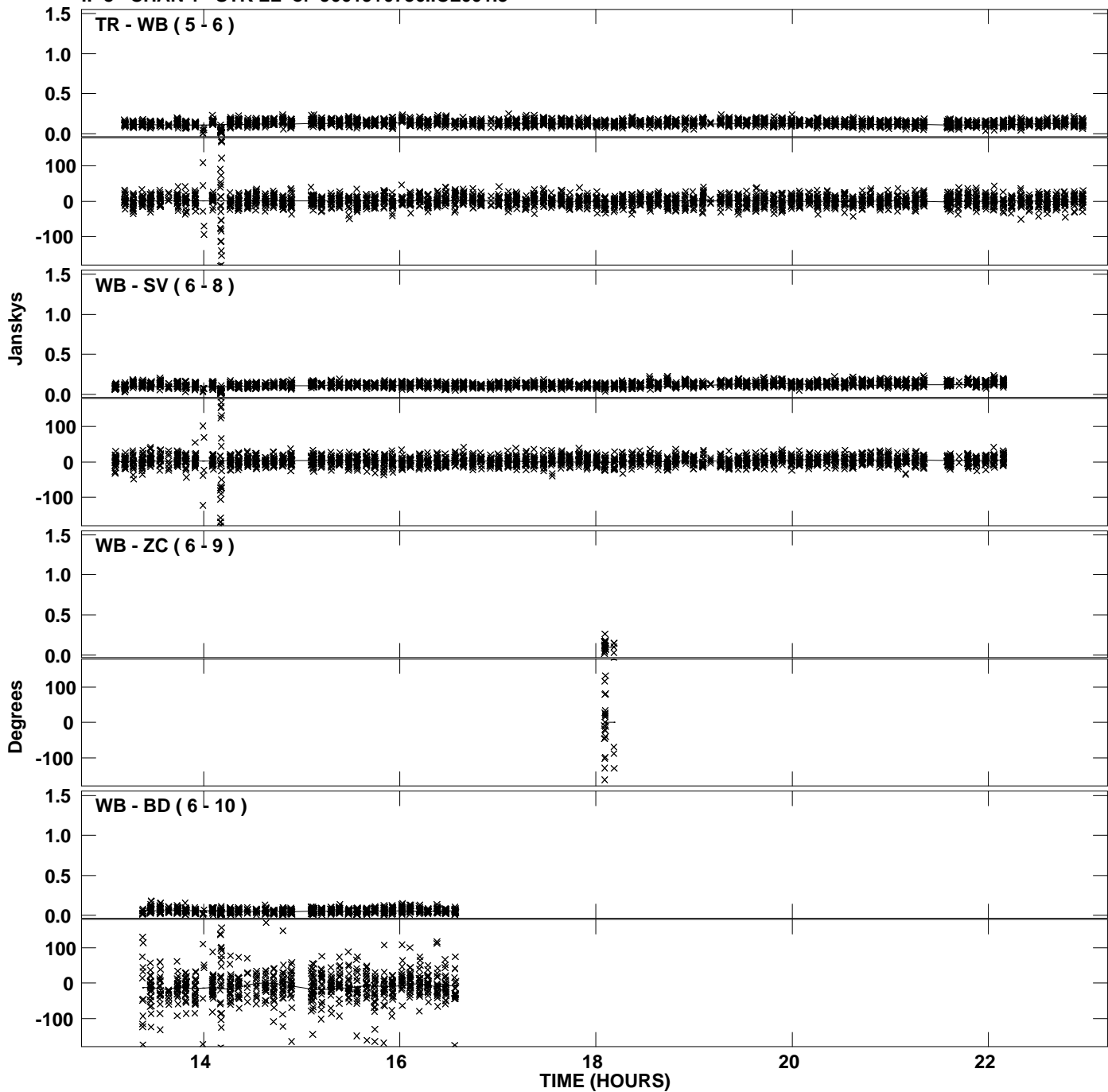
PLot file version 21 created 28-APR-2011 17:22:58
Amplitude andPhase vs Time for J0619+0736.MULTI.1 CL # 3
IF 7 CHAN 1 STK LL of J0619+0736.ICL001.3



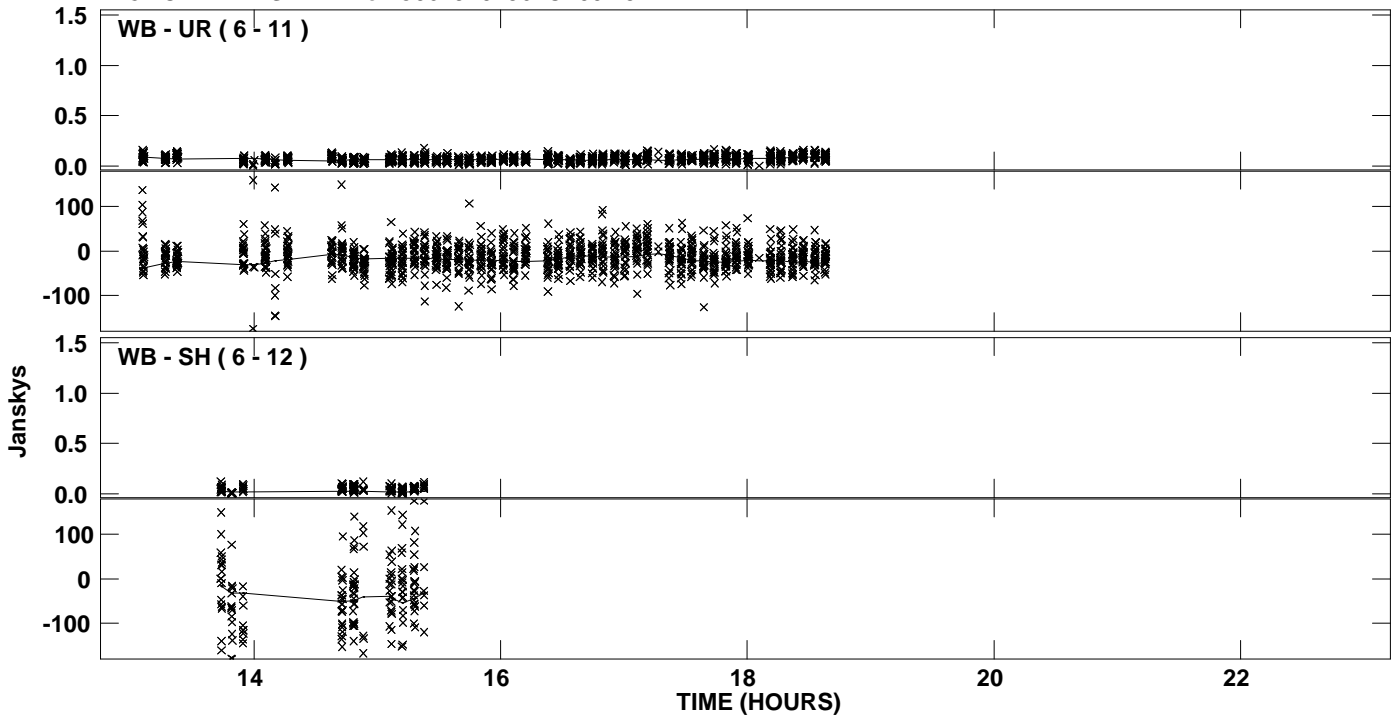
Plot file version 22 created 28-APR-2011 17:23:09
Amplitude andPhase vs Time for J0619+0736.MULTI.1 CL # 3
IF 8 CHAN 1 STK LL of J0619+0736.ICL001.3



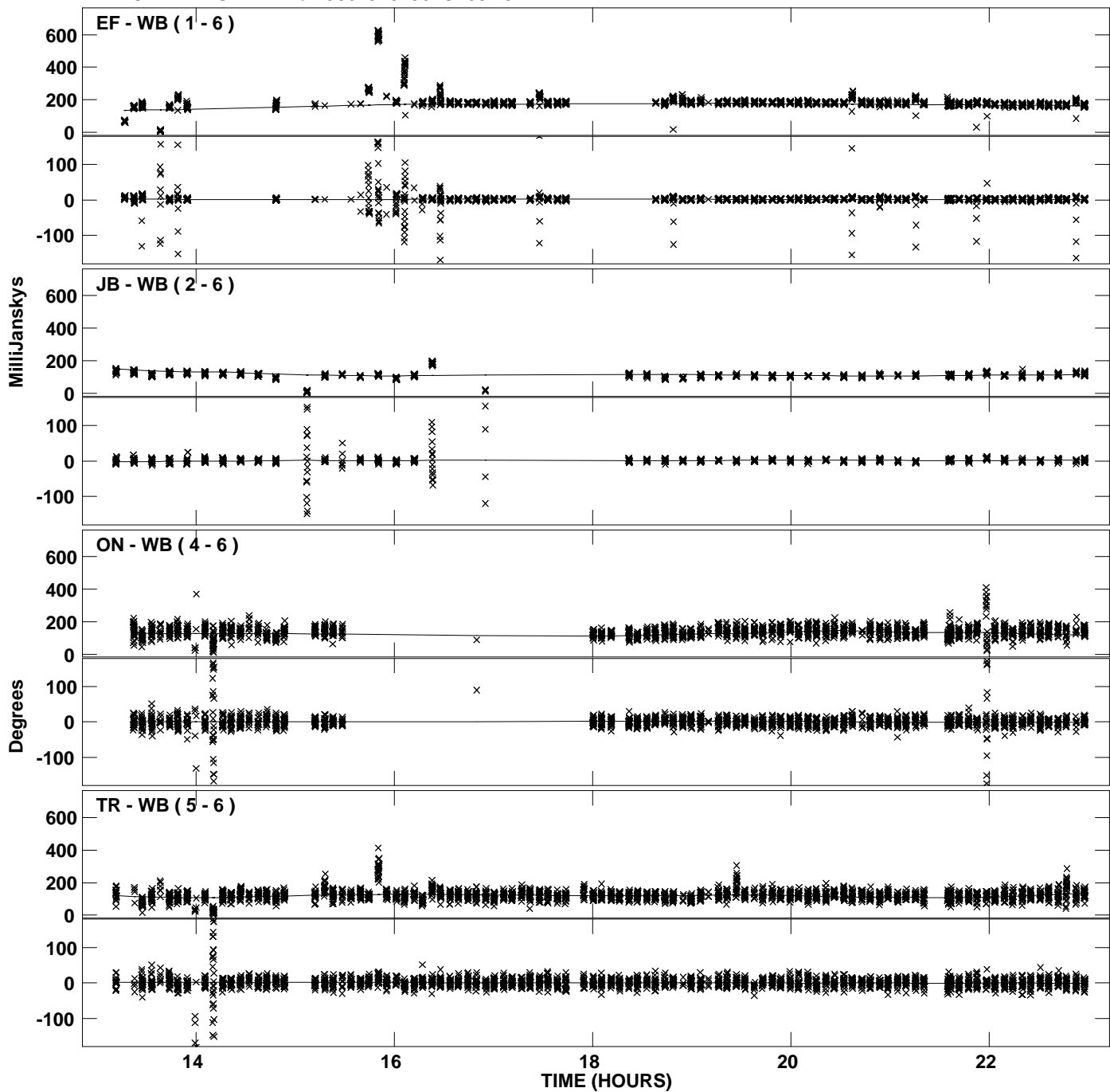
Plot file version 23 created 28-APR-2011 17:23:09
Amplitude andPhase vs Time for J0619+0736.MULTI.1 CL # 3
IF 8 CHAN 1 STK LL of J0619+0736.ICL001.3



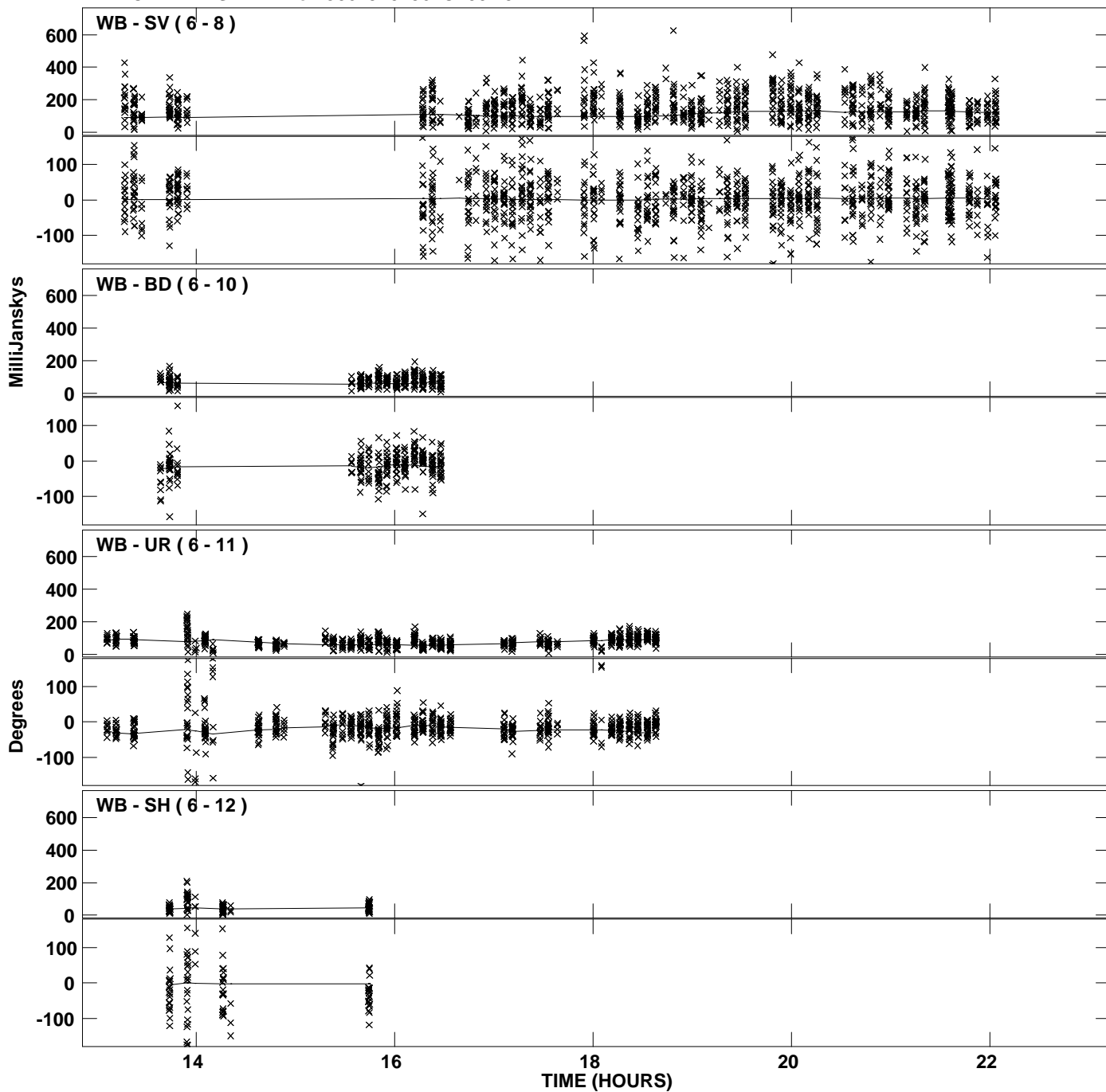
Plot file version 24 created 28-APR-2011 17:23:09
Amplitude and Phase vs Time for J0619+0736.MULTI.1 CL # 3
IF 8 CHAN 1 STK LL of J0619+0736.ICL001.3



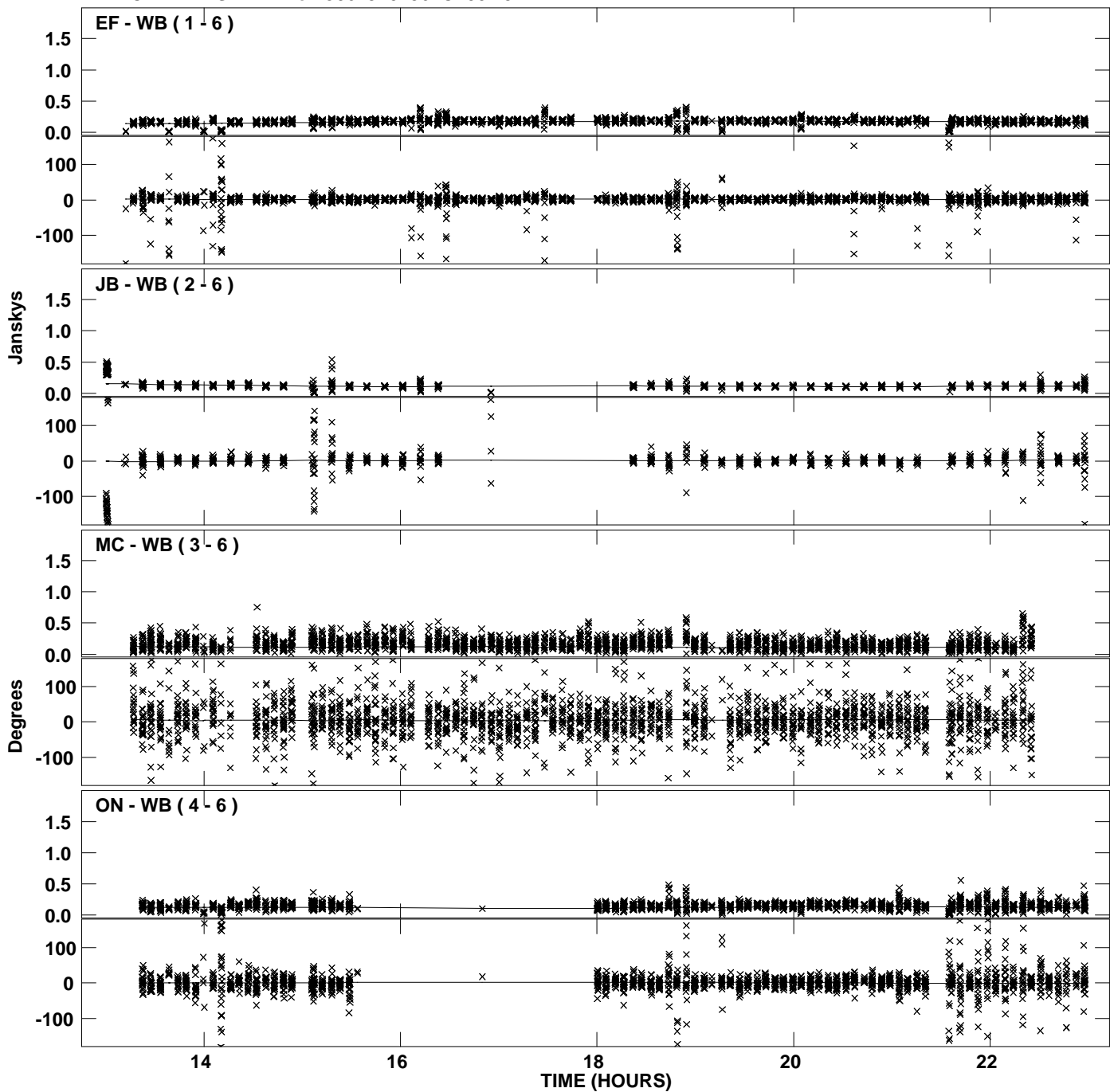
PLot file version 25 created 28-APR-2011 17:23:20
Amplitude andPhase vs Time for J0619+0736.MULTI.1 CL # 3
IF 1 CHAN 1 STK RR of J0619+0736.ICL001.3



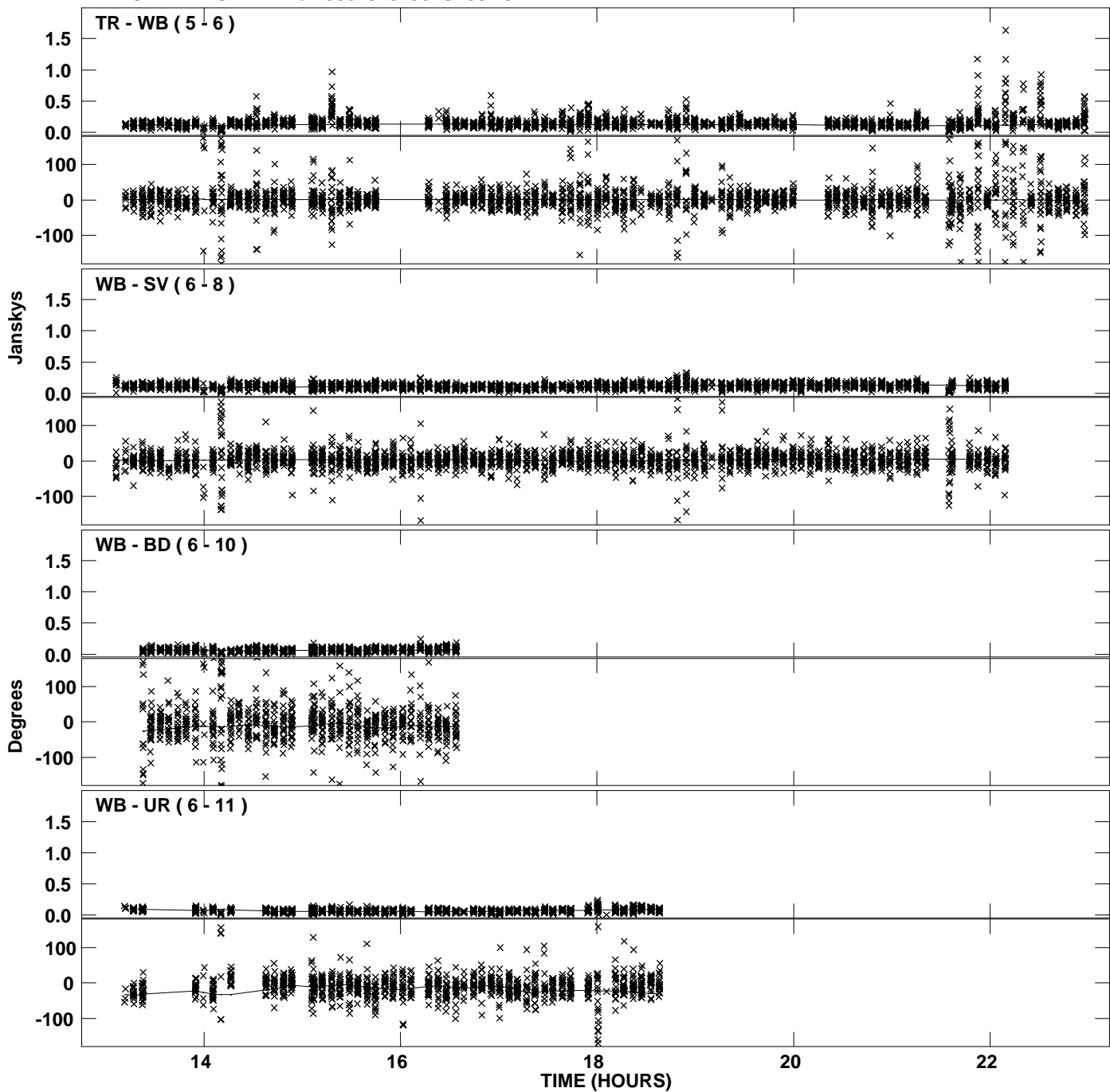
Plot file version 26 created 28-APR-2011 17:23:20
Amplitude andPhase vs Time for J0619+0736.MULTI.1 CL # 3
IF 1 CHAN 1 STK RR of J0619+0736.ICL001.3



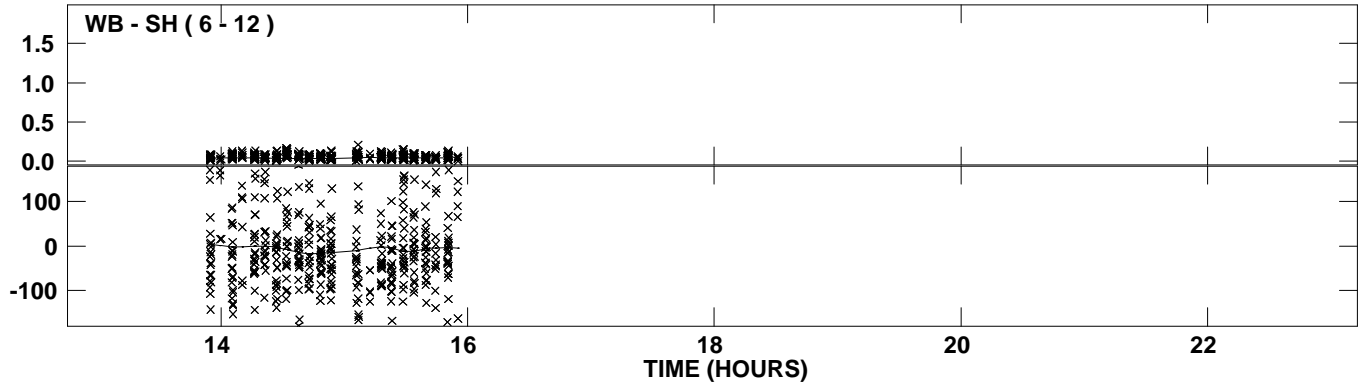
PLot file version 27 created 28-APR-2011 17:23:31
Amplitude andPhase vs Time for J0619+0736.MULTI.1 CL # 3
IF 2 CHAN 1 STK RR of J0619+0736.ICL001.3



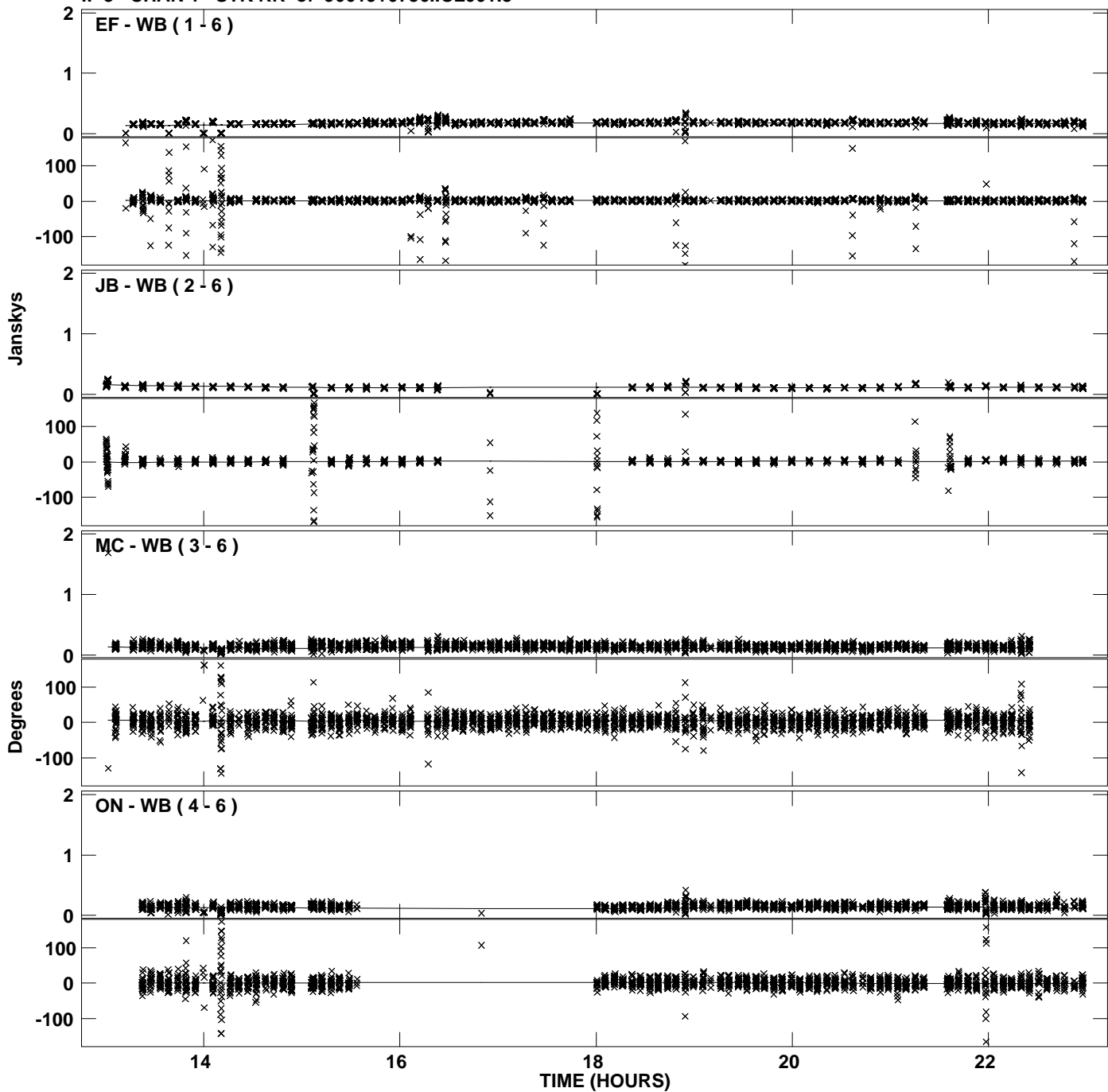
Plot file version 28 created 28-APR-2011 17:23:31
Amplitude and Phase vs Time for J0619+0736.MULTI.1 CL # 3
IF 2 CHAN 1 STK RR of J0619+0736.ICL001.3



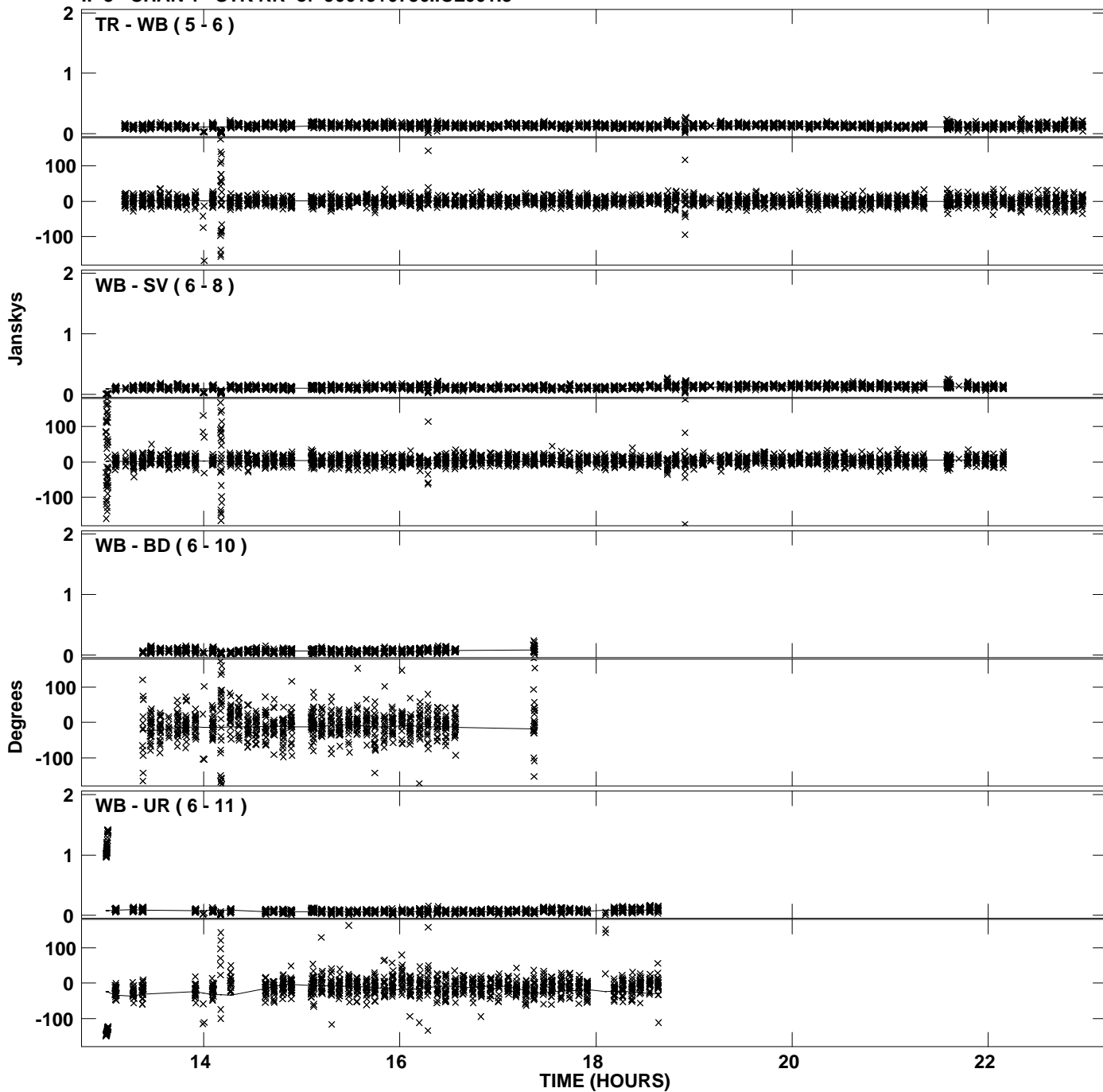
Plot file version 29 created 28-APR-2011 17:23:31
Amplitude and Phase vs Time for J0619+0736.MULTI.1 CL # 3
IF 2 CHAN 1 STK RR of J0619+0736.ICL001.3



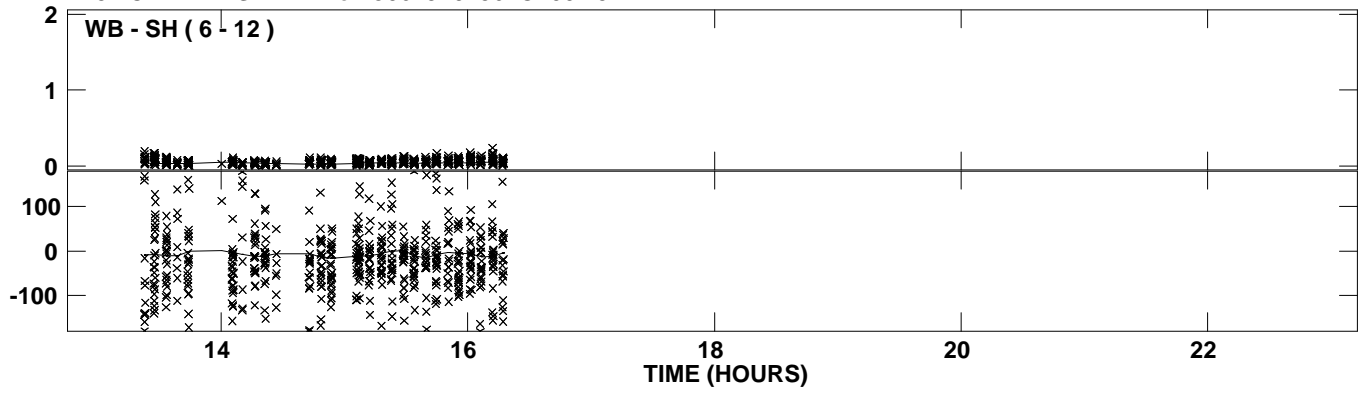
Plot file version 30 created 28-APR-2011 17:23:43
Amplitude andPhase vs Time for J0619+0736.MULTI.1 CL # 3
IF 3 CHAN 1 STK RR of J0619+0736.ICL001.3



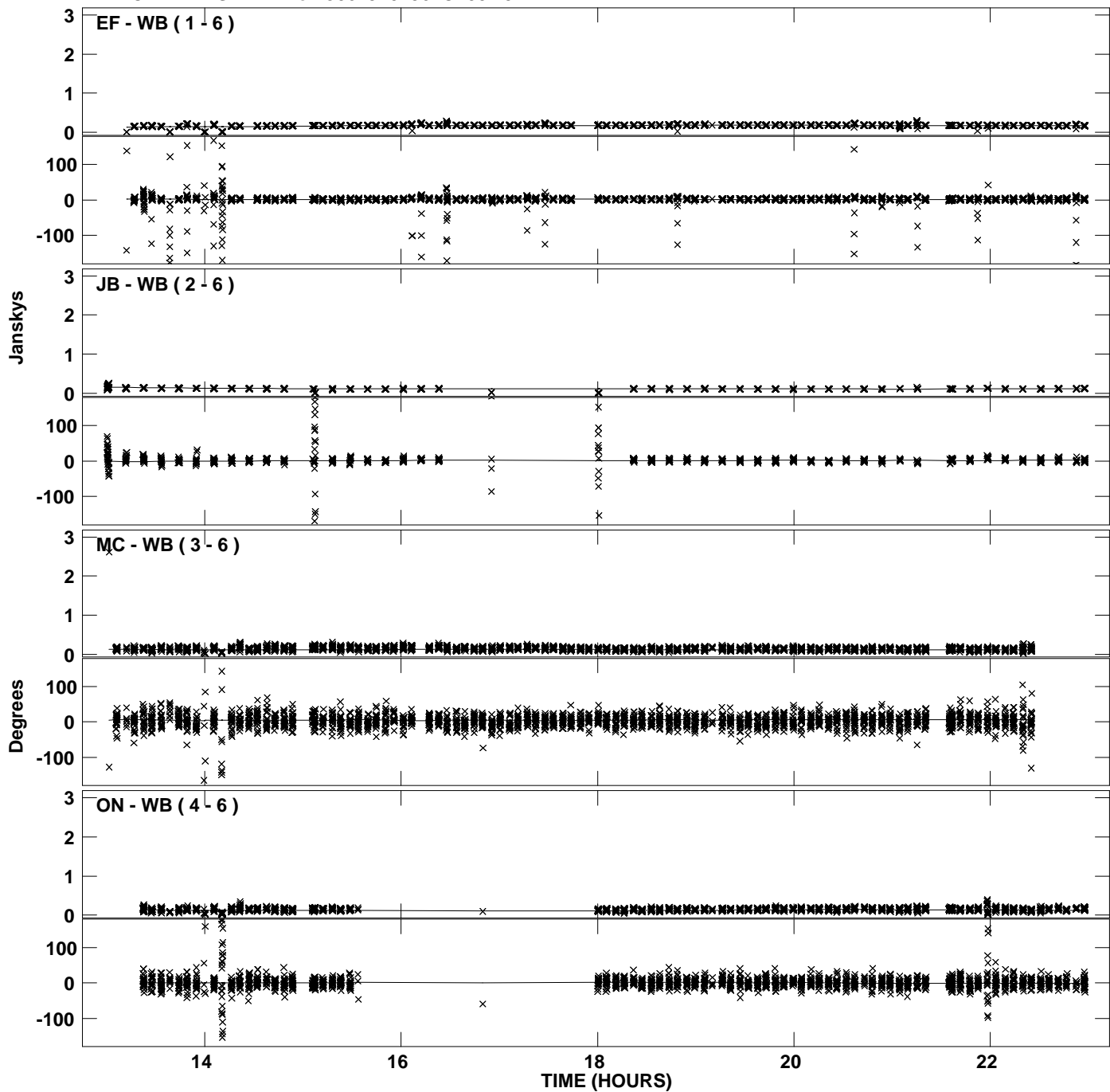
Plot file version 31 created 28-APR-2011 17:23:43
Amplitude and Phase vs Time for J0619+0736.MULTI.1 CL # 3
IF 3 CHAN 1 STK RR of J0619+0736.ICL001.3



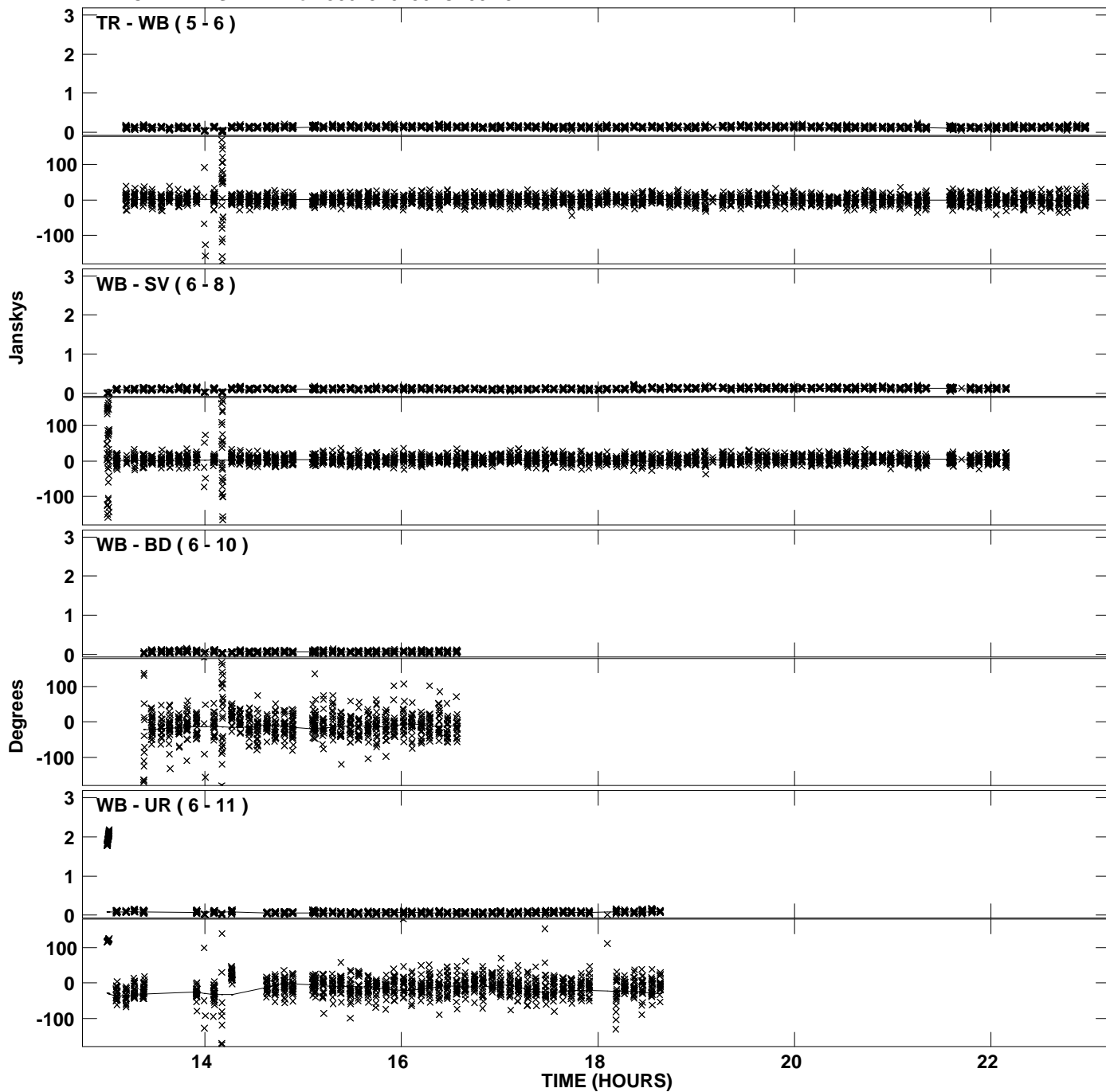
PLot file version 32 created 28-APR-2011 17:23:43
Amplitude andPhase vs Time for J0619+0736.MULTI.1 CL # 3
IF 3 CHAN 1 STK RR of J0619+0736.ICL001.3



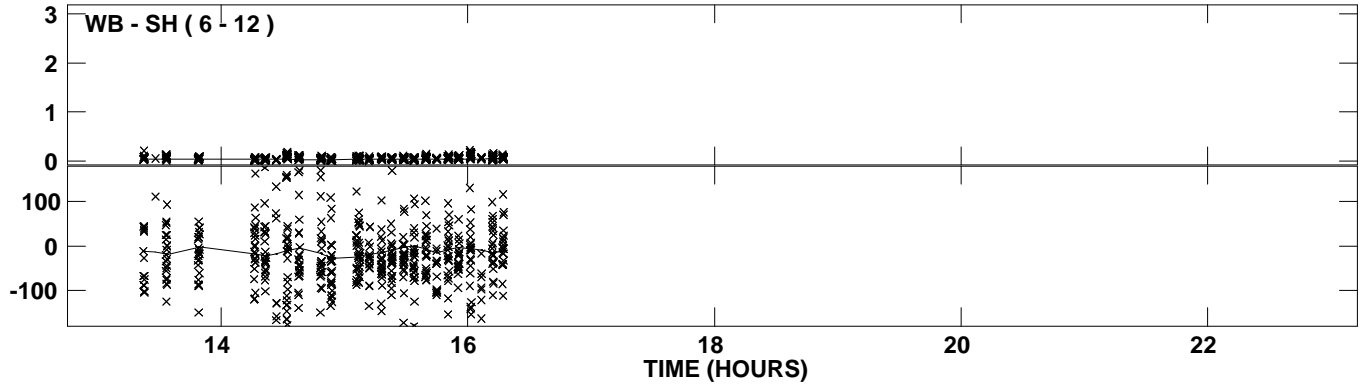
Plot file version 33 created 28-APR-2011 17:23:54
Amplitude andPhase vs Time for J0619+0736.MULTI.1 CL # 3
IF 4 CHAN 1 STK RR of J0619+0736.ICL001.3



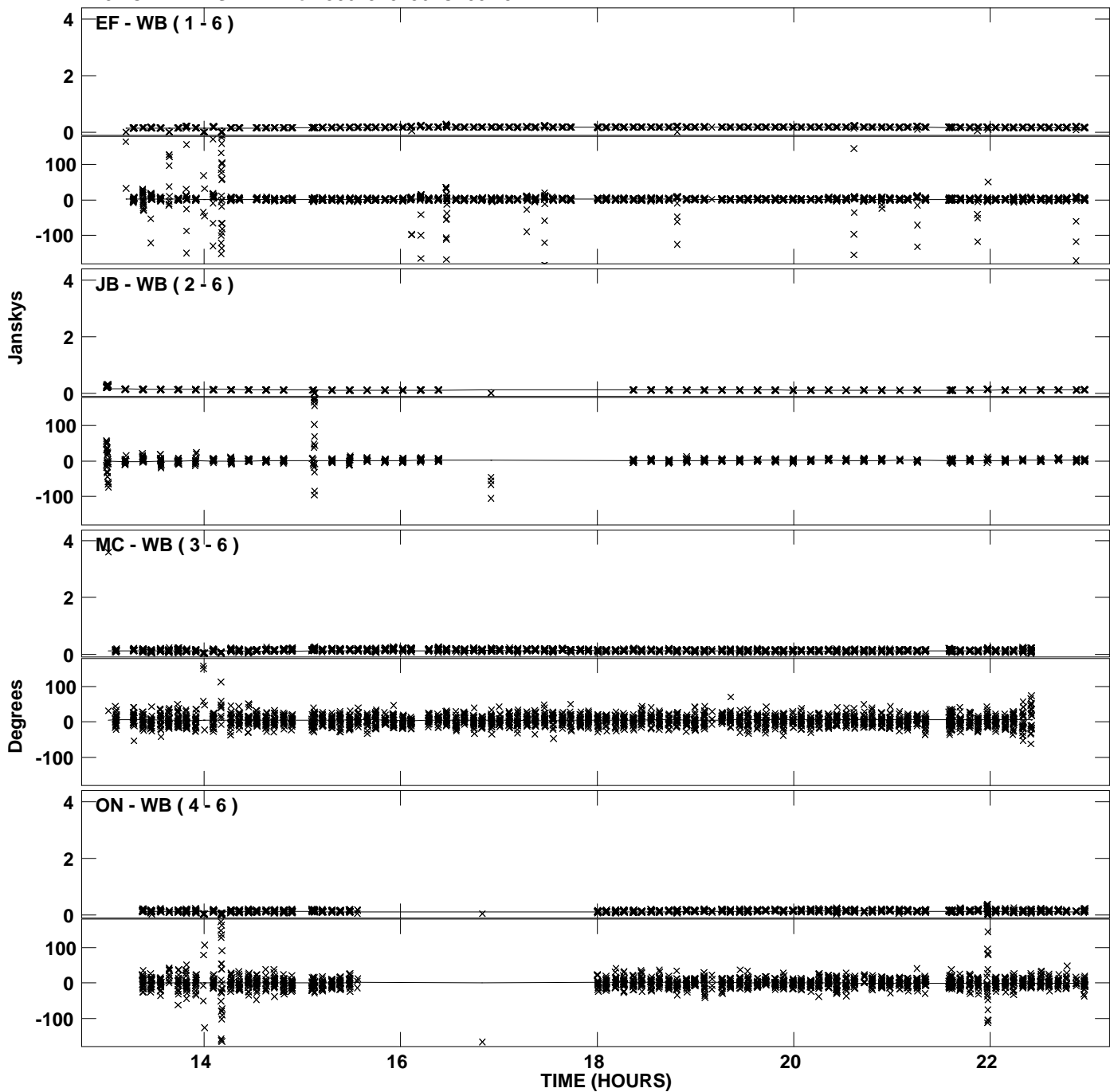
Plot file version 34 created 28-APR-2011 17:23:54
Amplitude and Phase vs Time for J0619+0736.MULTI.1 CL # 3
IF 4 CHAN 1 STK RR of J0619+0736.ICL001.3



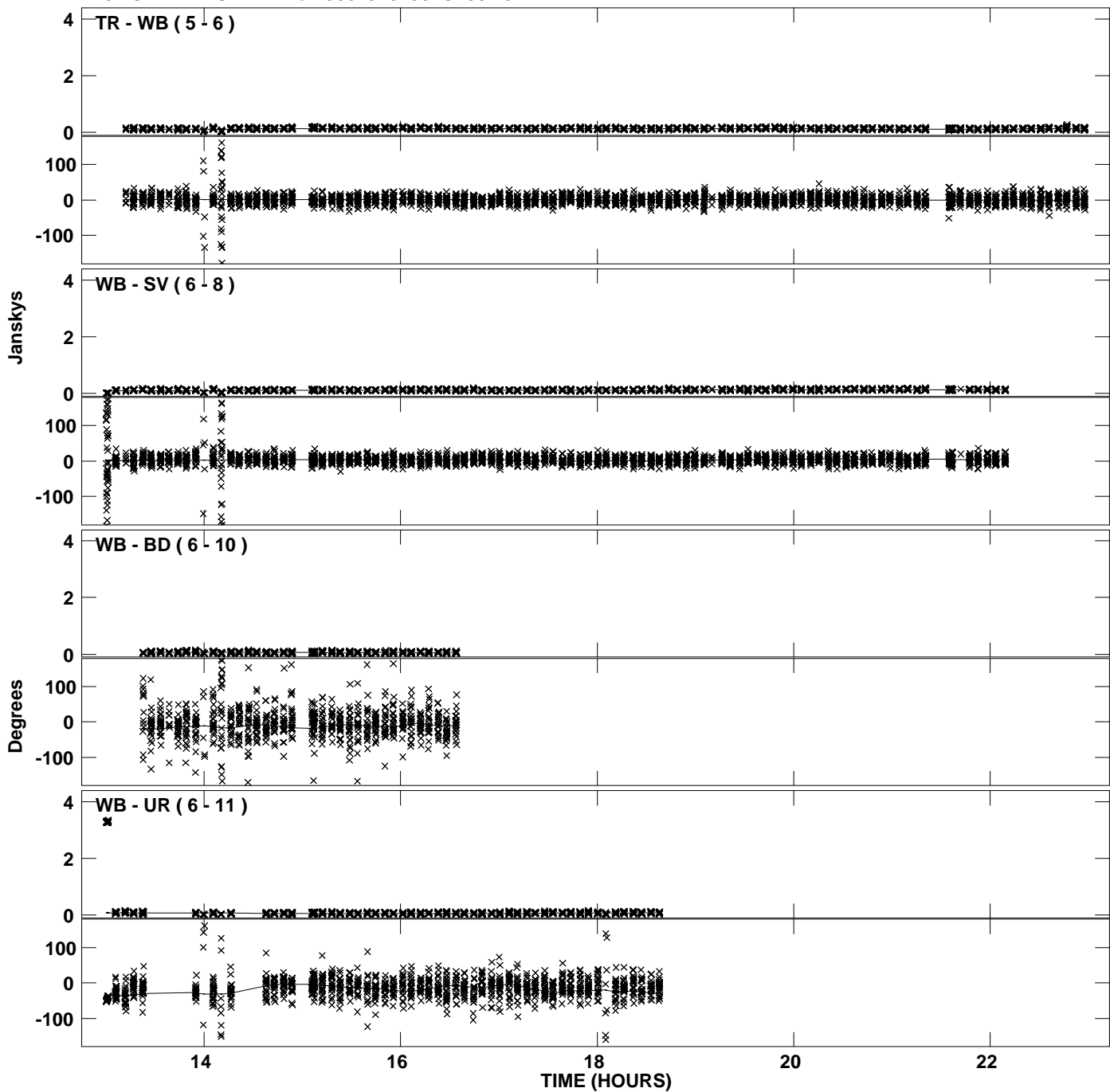
PLot file version 35 created 28-APR-2011 17:23:54
Amplitude andPhase vs Time for J0619+0736.MULTI.1 CL # 3
IF 4 CHAN 1 STK RR of J0619+0736.ICL001.3



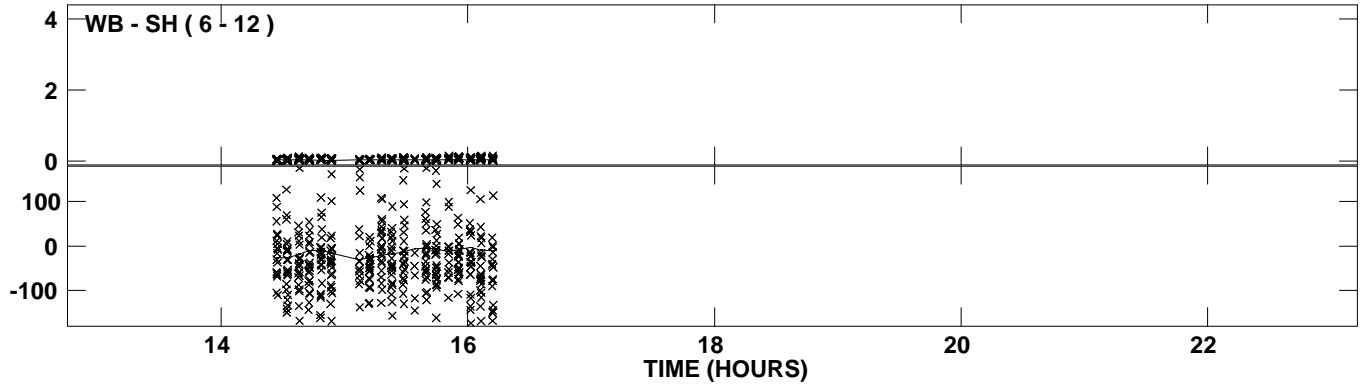
Plot file version 36 created 28-APR-2011 17:24:05
Amplitude andPhase vs Time for J0619+0736.MULTI.1 CL # 3
IF 5 CHAN 1 STK RR of J0619+0736.ICL001.3



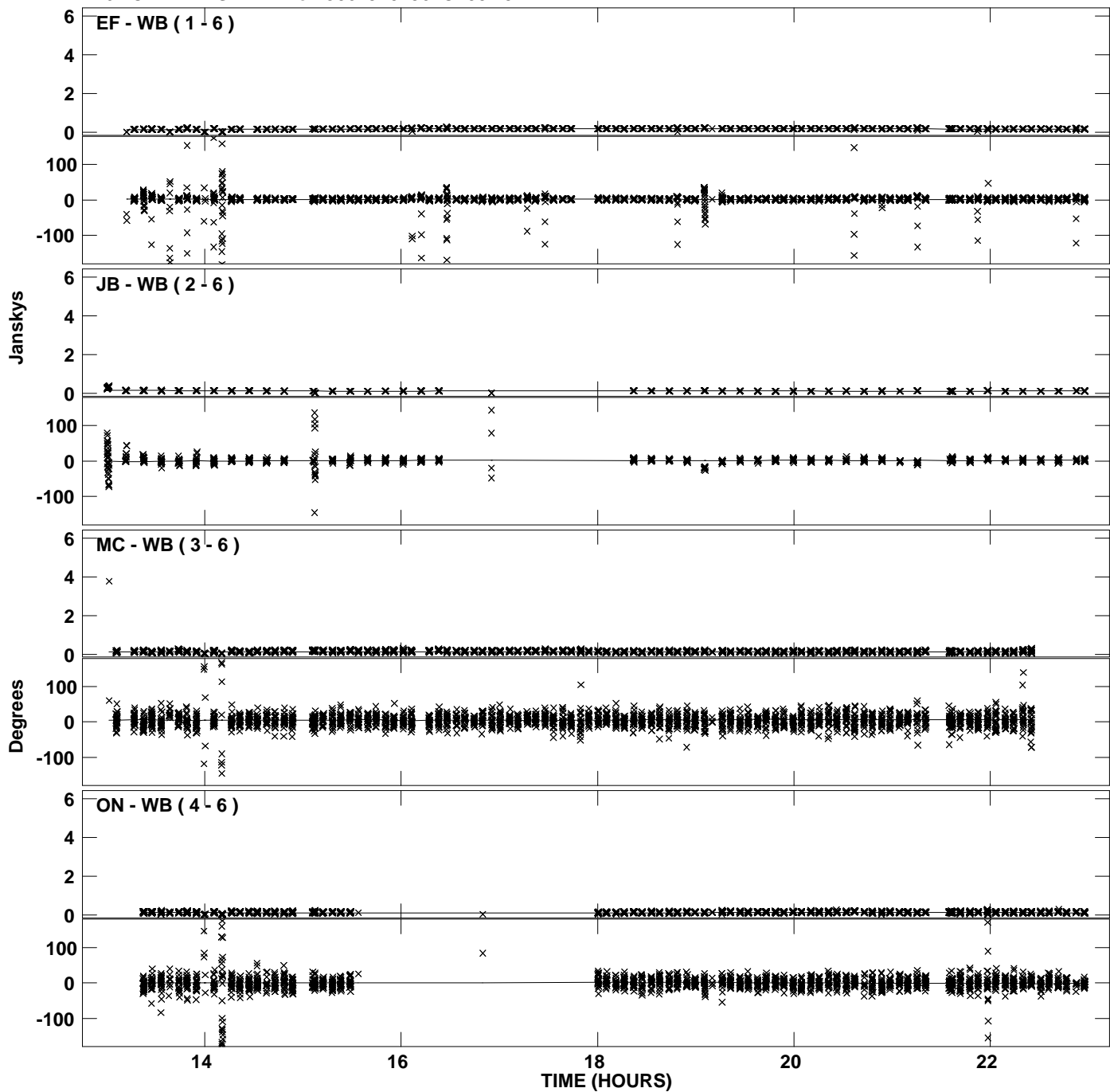
Plot file version 37 created 28-APR-2011 17:24:05
Amplitude and Phase vs Time for J0619+0736.MULTI.1 CL # 3
IF 5 CHAN 1 STK RR of J0619+0736.ICL001.3



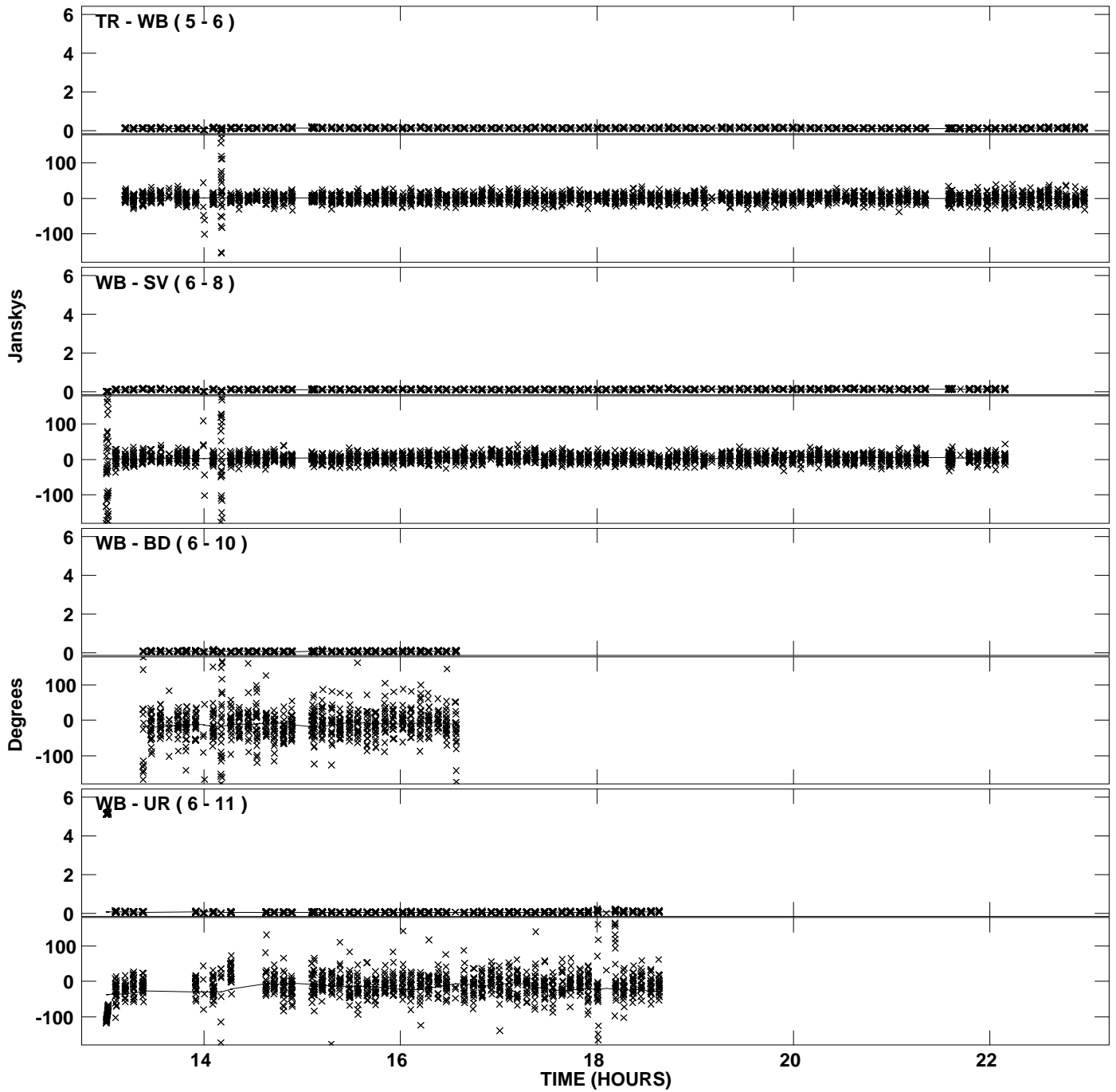
PLot file version 38 created 28-APR-2011 17:24:05
Amplitude and Phase vs Time for J0619+0736.MULTI.1 CL # 3
IF 5 CHAN 1 STK RR of J0619+0736.ICL001.3



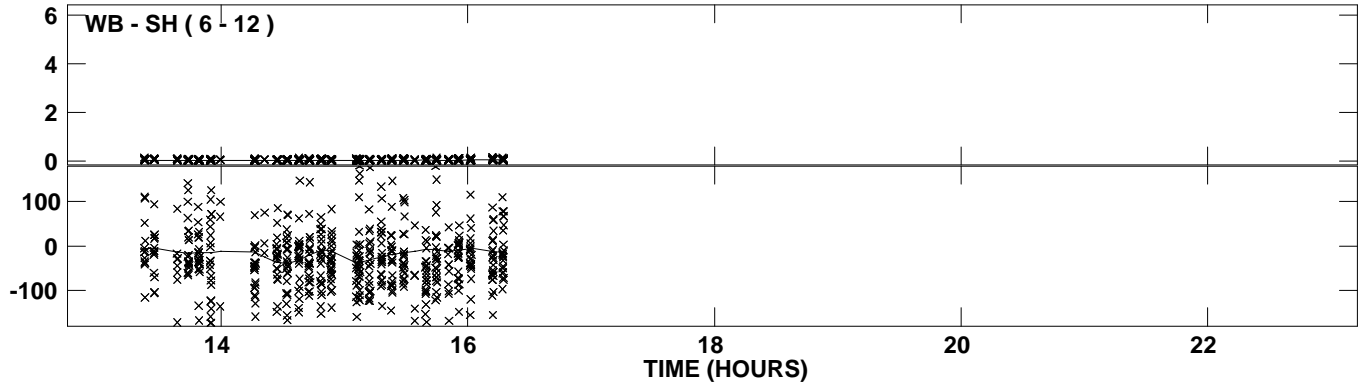
Plot file version 39 created 28-APR-2011 17:24:16
Amplitude andPhase vs Time for J0619+0736.MULTI.1 CL # 3
IF 6 CHAN 1 STK RR of J0619+0736.ICL001.3



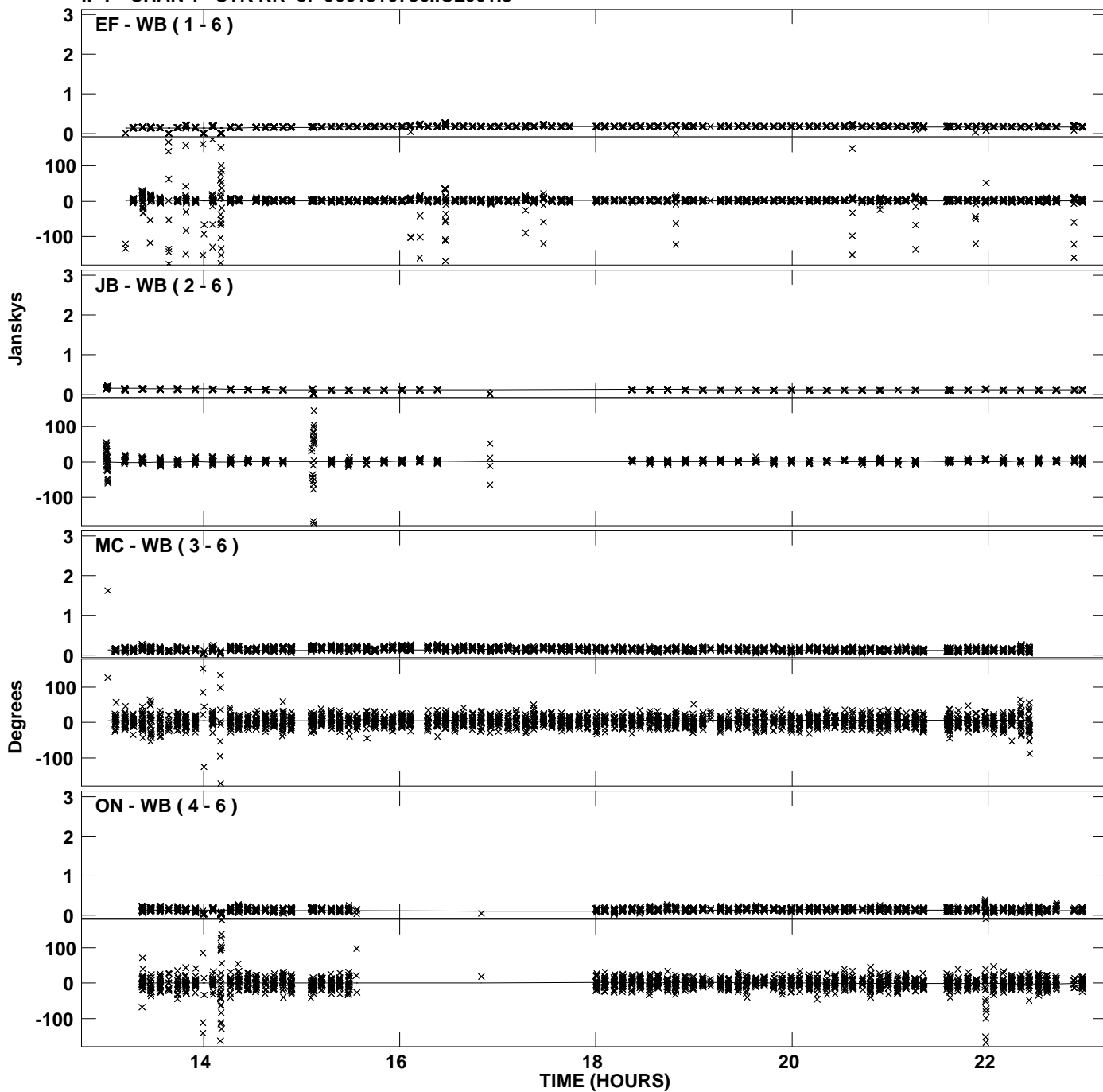
Plot file version 40 created 28-APR-2011 17:24:16
Amplitude and Phase vs Time for J0619+0736.MULTI.1 CL # 3
IF 6 CHAN 1 STK RR of J0619+0736.ICL001.3



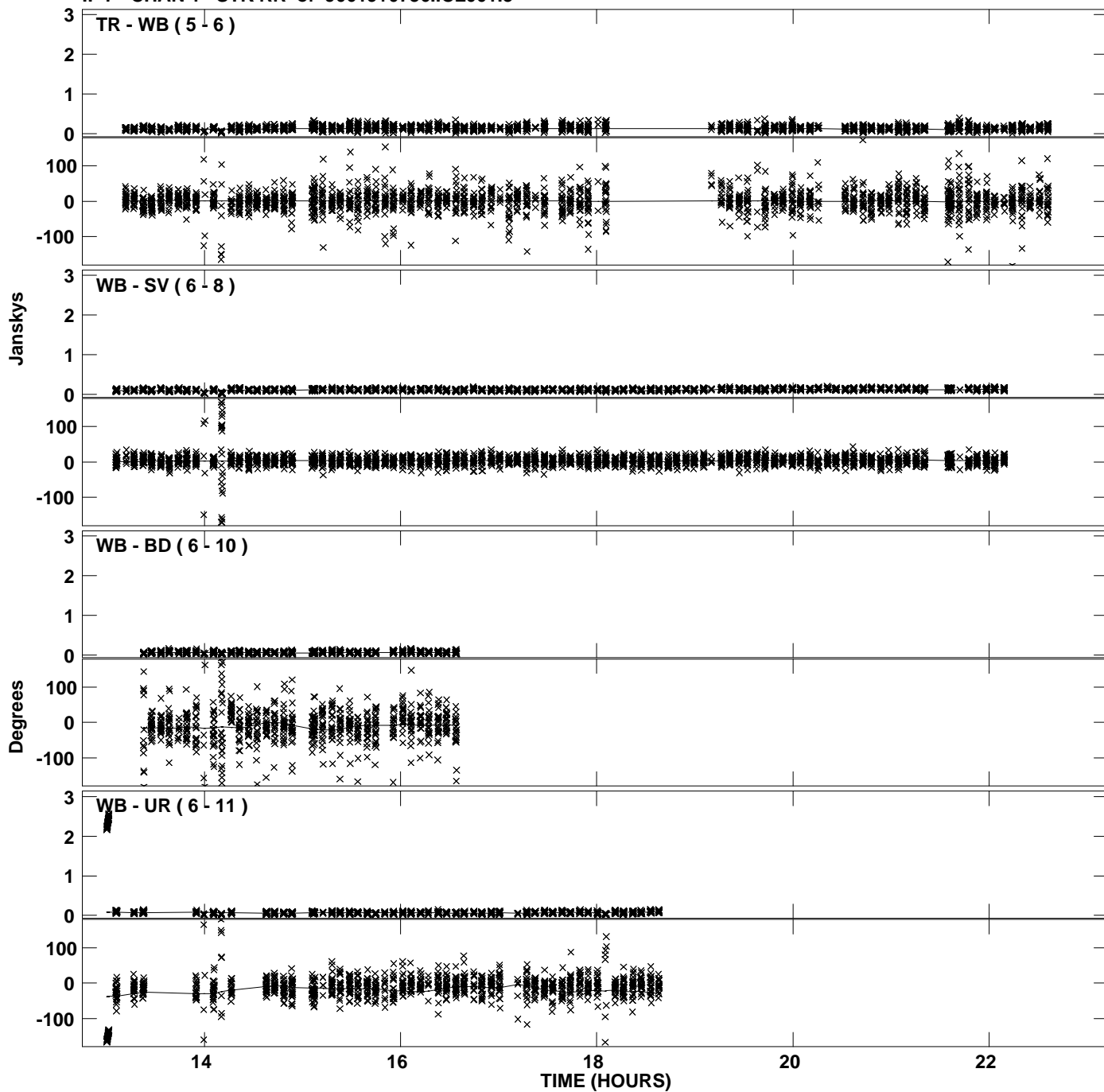
PLot file version 41 created 28-APR-2011 17:24:16
Amplitude andPhase vs Time for J0619+0736.MULTI.1 CL # 3
IF 6 CHAN 1 STK RR of J0619+0736.ICL001.3



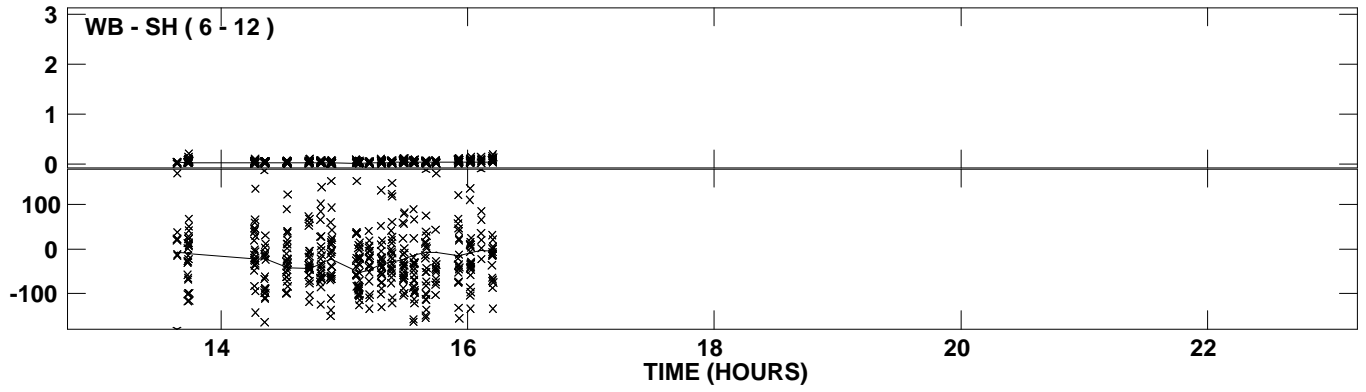
Plot file version 42 created 28-APR-2011 17:24:28
Amplitude andPhase vs Time for J0619+0736.MULTI.1 CL # 3
IF 7 CHAN 1 STK RR of J0619+0736.ICL001.3



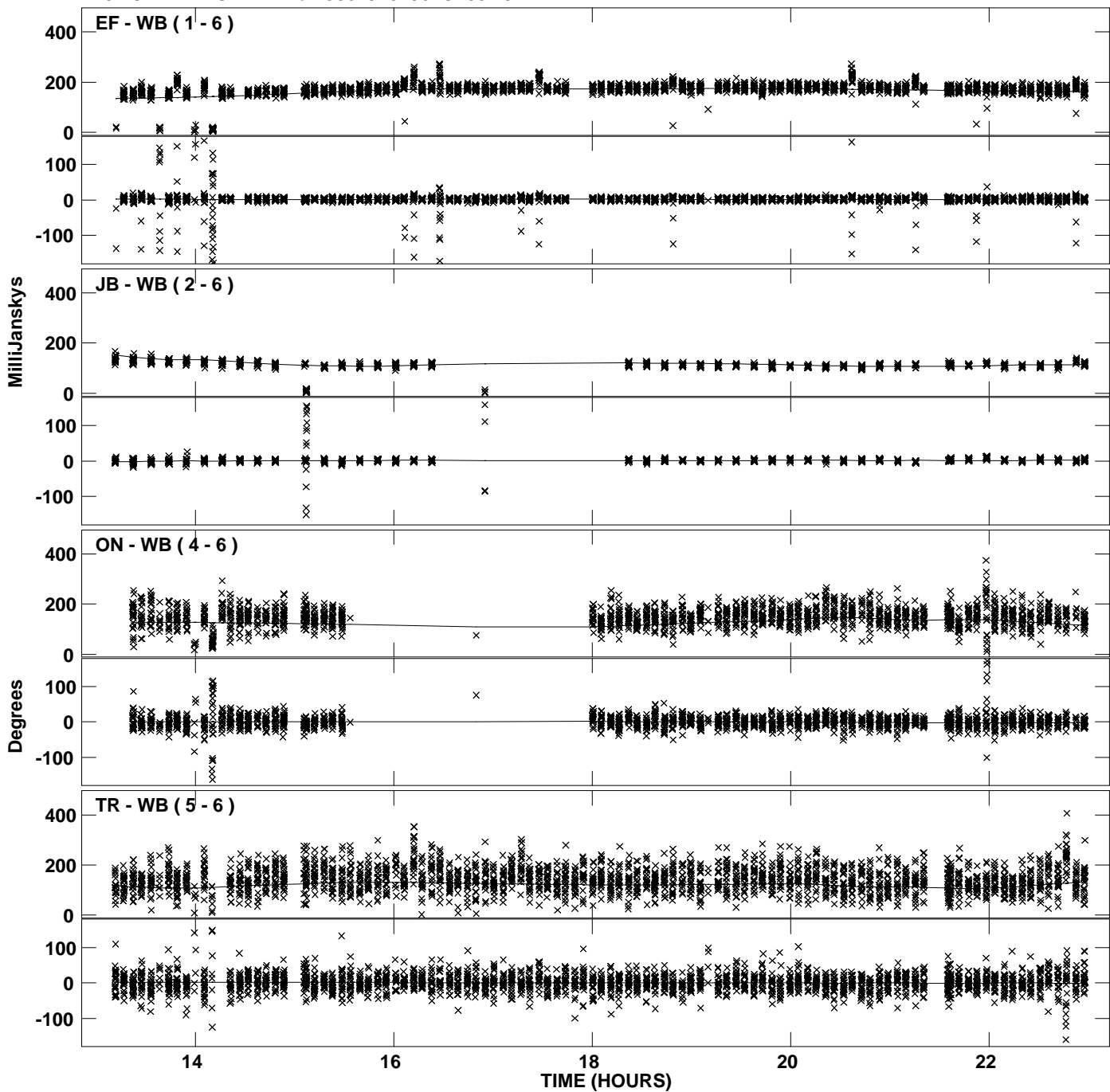
Plot file version 43 created 28-APR-2011 17:24:28
Amplitude and Phase vs Time for J0619+0736.MULTI.1 CL # 3
IF 7 CHAN 1 STK RR of J0619+0736.ICL001.3



PLot file version 44 created 28-APR-2011 17:24:28
Amplitude andPhase vs Time for J0619+0736.MULTI.1 CL # 3
IF 7 CHAN 1 STK RR of J0619+0736.ICL001.3



Plot file version 45 created 28-APR-2011 17:24:38
Amplitude andPhase vs Time for J0619+0736.MULTI.1 CL # 3
IF 8 CHAN 1 STK RR of J0619+0736.ICL001.3



Plot file version 46 created 28-APR-2011 17:24:39
Amplitude andPhase vs Time for J0619+0736.MULTI.1 CL # 3
IF 8 CHAN 1 STK RR of J0619+0736.ICL001.3

