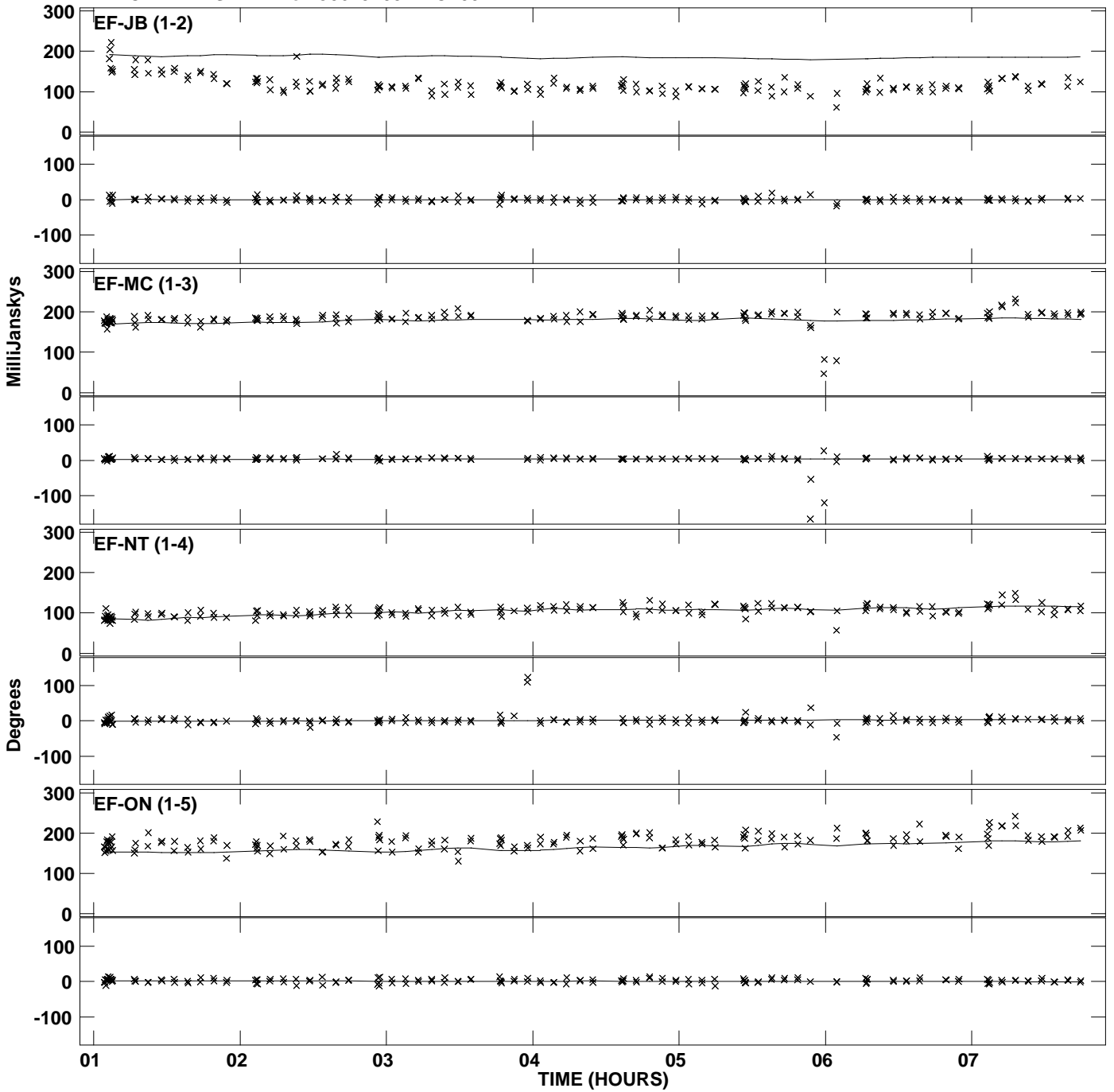
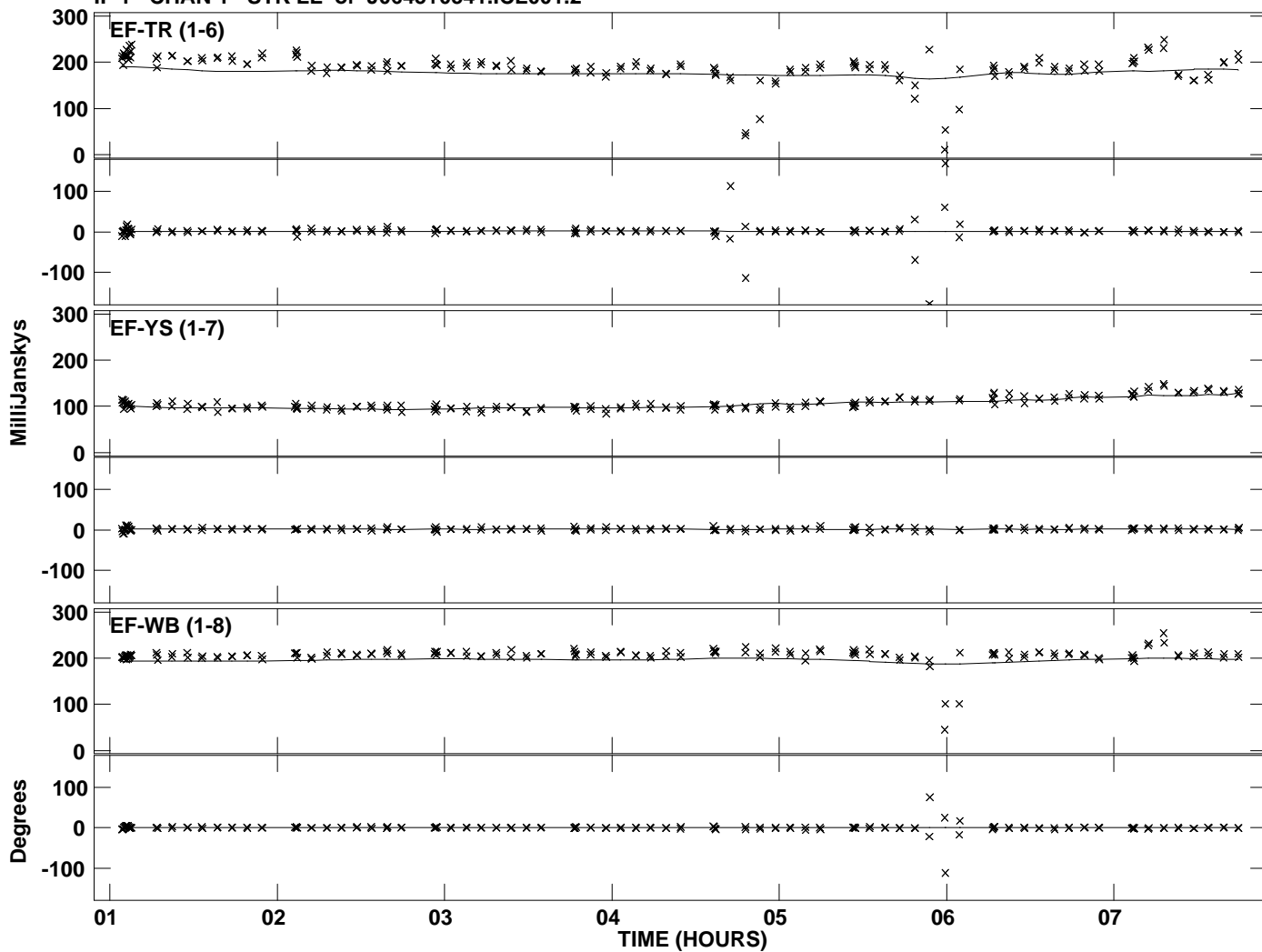


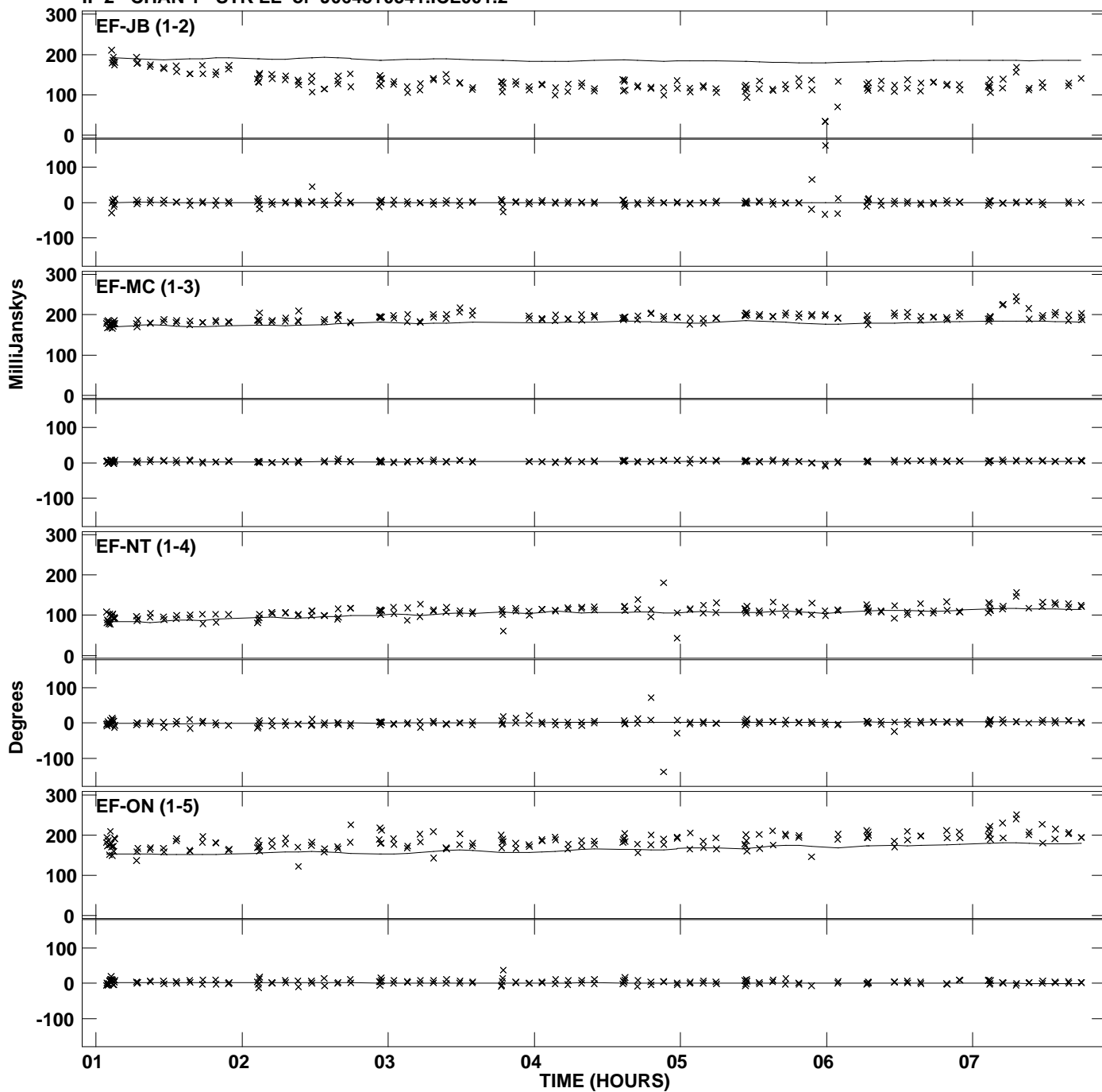
Plot file version 1 created 16-OCT-2012 12:07:14
Amplitude and Phase vs Time for J0645+0541.MULTI.1 Vect aver. CL # 2
IF 1 CHAN 1 STK LL of J0645+0541.ICL001.2



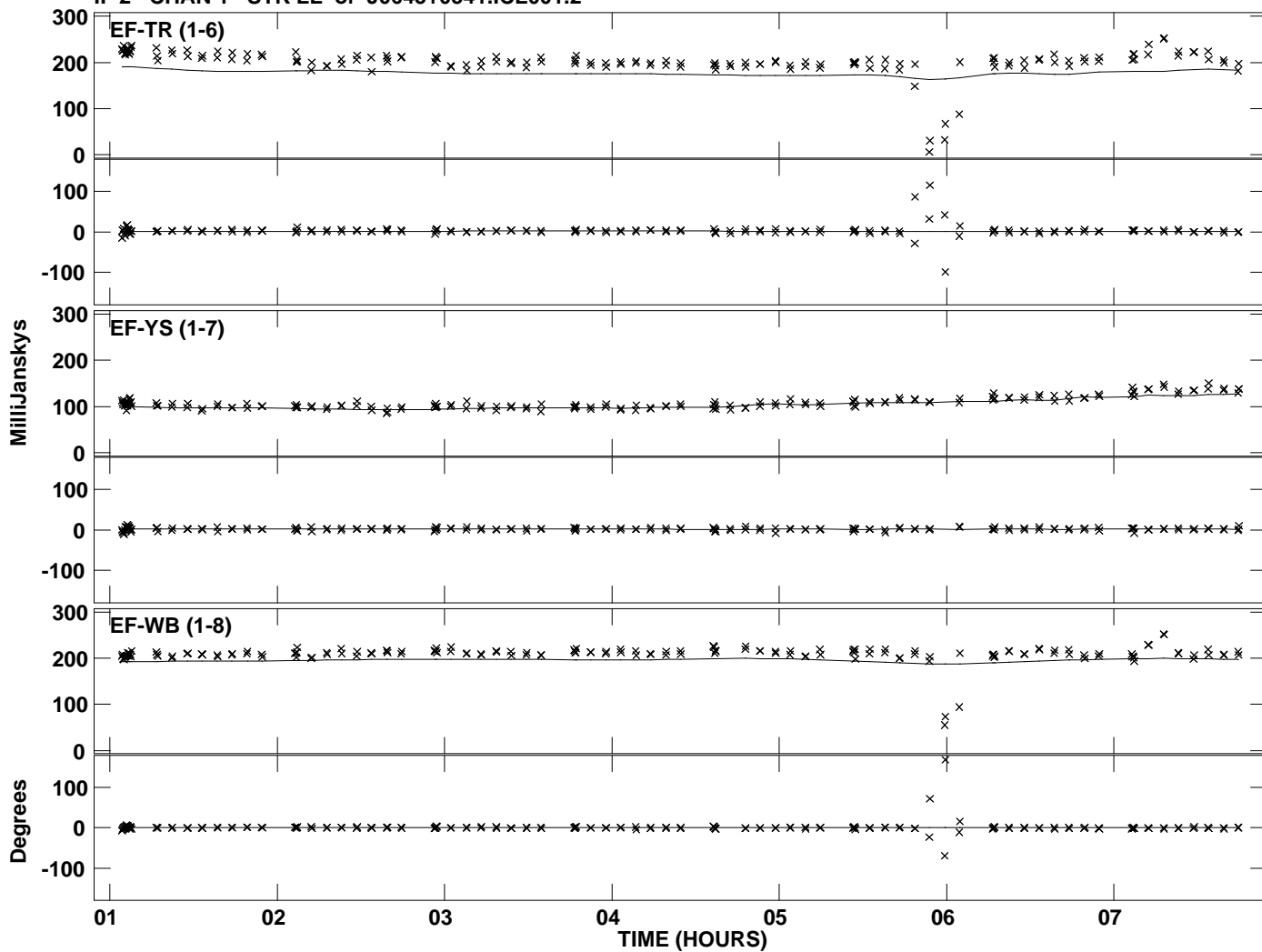
Plot file version 2 created 16-OCT-2012 12:07:14
Amplitude and Phase vs Time for J0645+0541.MULTI.1 Vect aver. CL # 2
IF 1 CHAN 1 STK LL of J0645+0541.ICL001.2



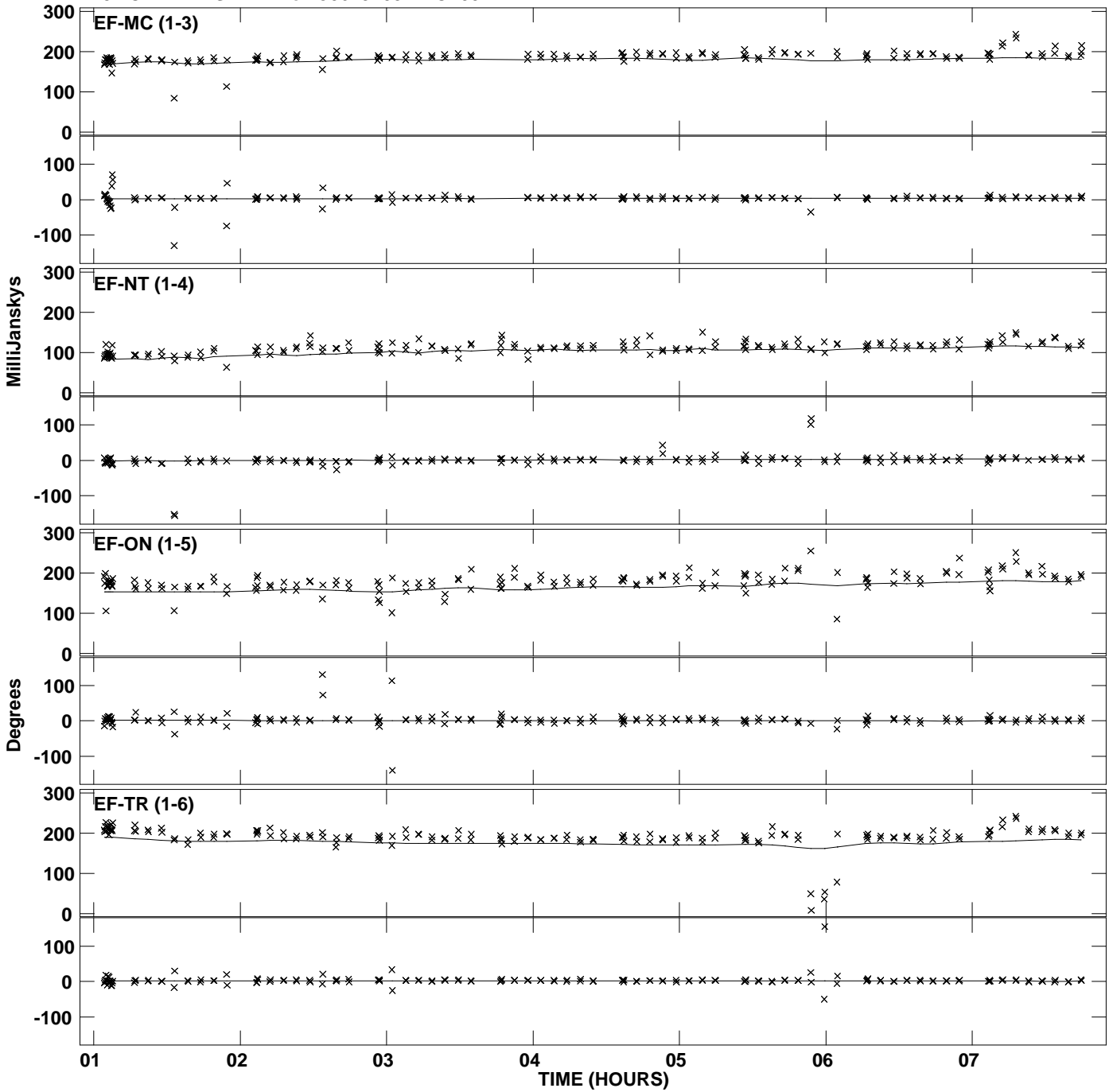
Plot file version 3 created 16-OCT-2012 12:07:14
Amplitude andPhase vs Time for J0645+0541.MULTI.1 Vect aver. CL # 2
IF 2 CHAN 1 STK LL of J0645+0541.ICL001.2



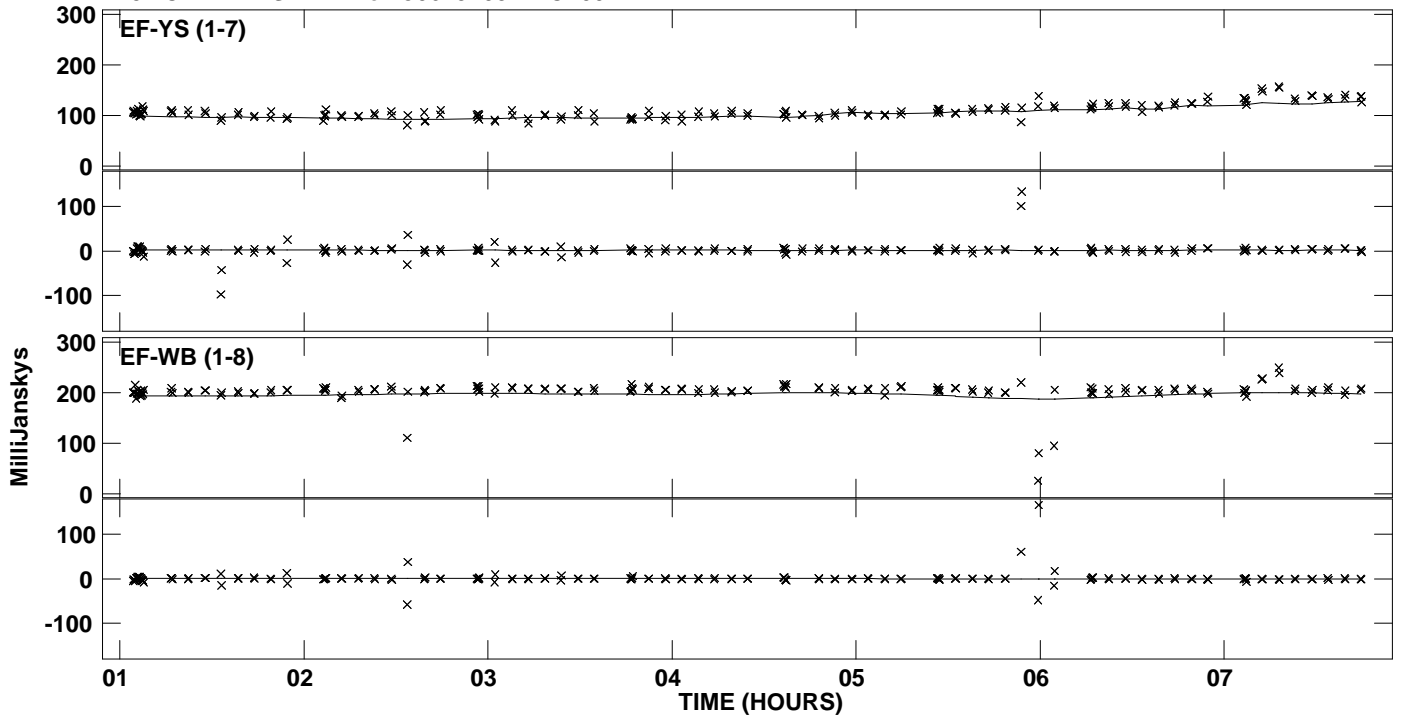
Plot file version 4 created 16-OCT-2012 12:07:14
Amplitude and Phase vs Time for J0645+0541.MULTI.1 Vect aver. CL # 2
IF 2 CHAN 1 STK LL of J0645+0541.ICL001.2



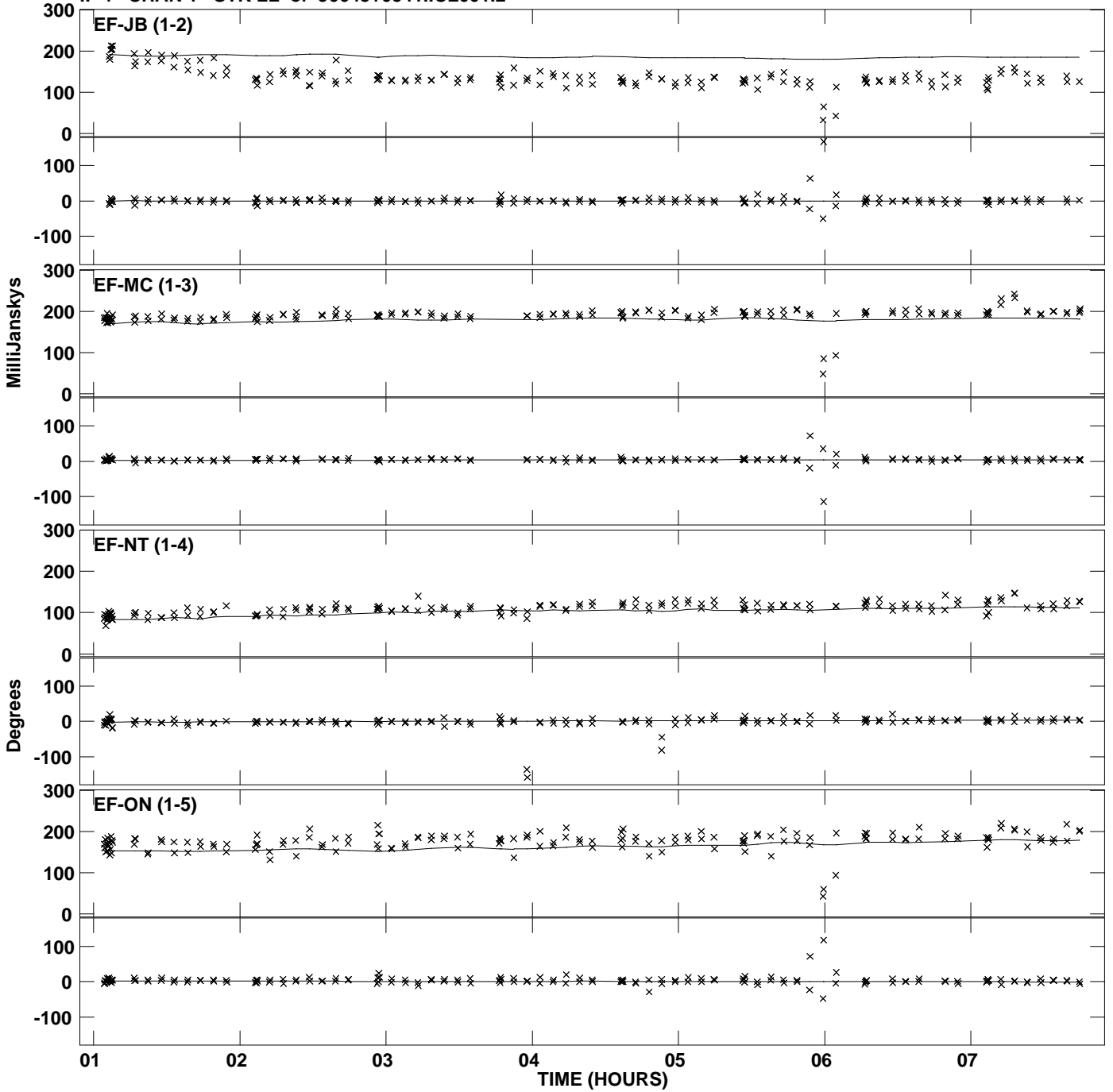
Plot file version 5 created 16-OCT-2012 12:07:14
Amplitude andPhase vs Time for J0645+0541.MULTI.1 Vect aver. CL # 2
IF 3 CHAN 1 STK LL of J0645+0541.ICL001.2



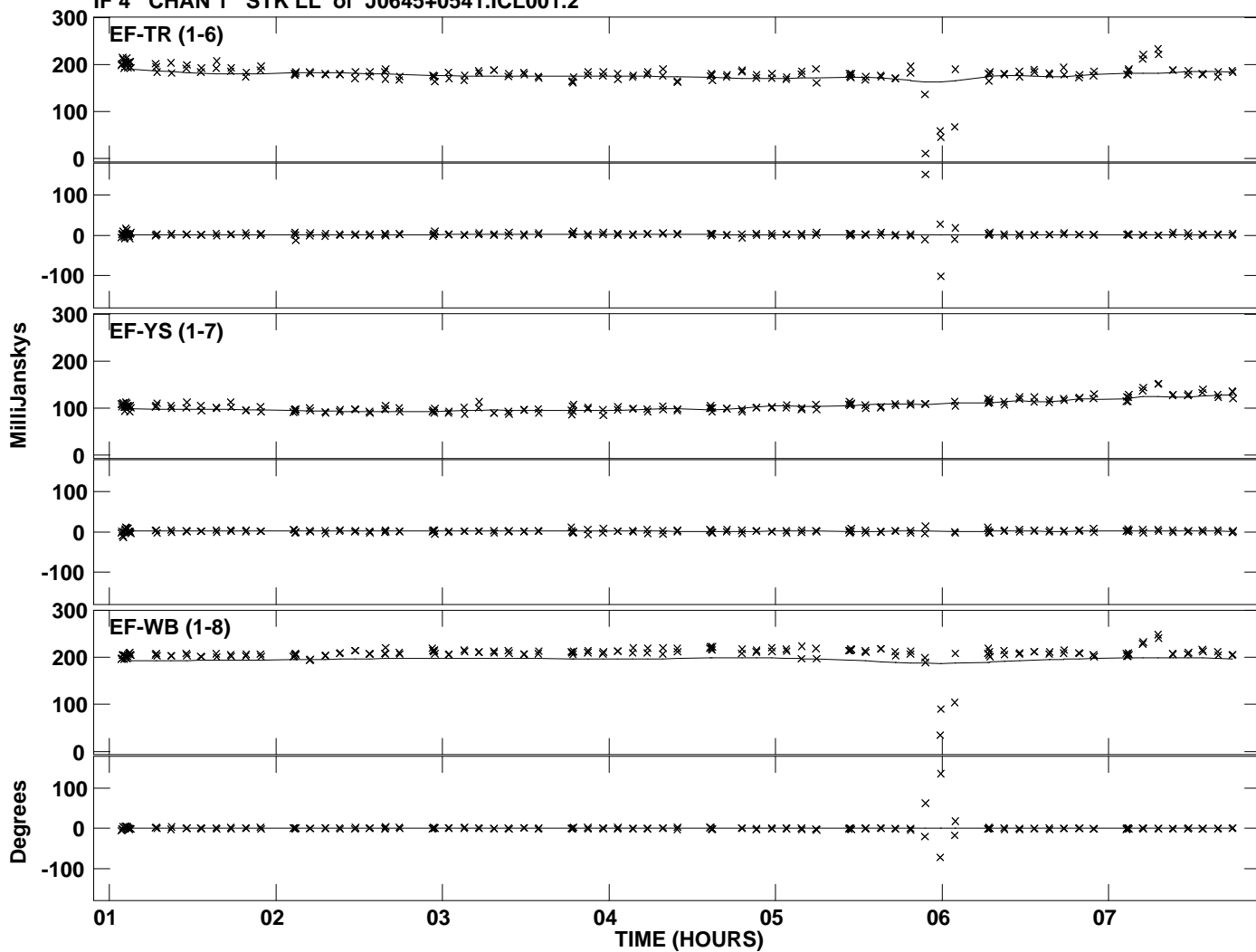
Plot file version 6 created 16-OCT-2012 12:07:14
Amplitude andPhase vs Time for J0645+0541.MULTI.1 Vect aver. CL # 2
IF 3 CHAN 1 STK LL of J0645+0541.ICL001.2



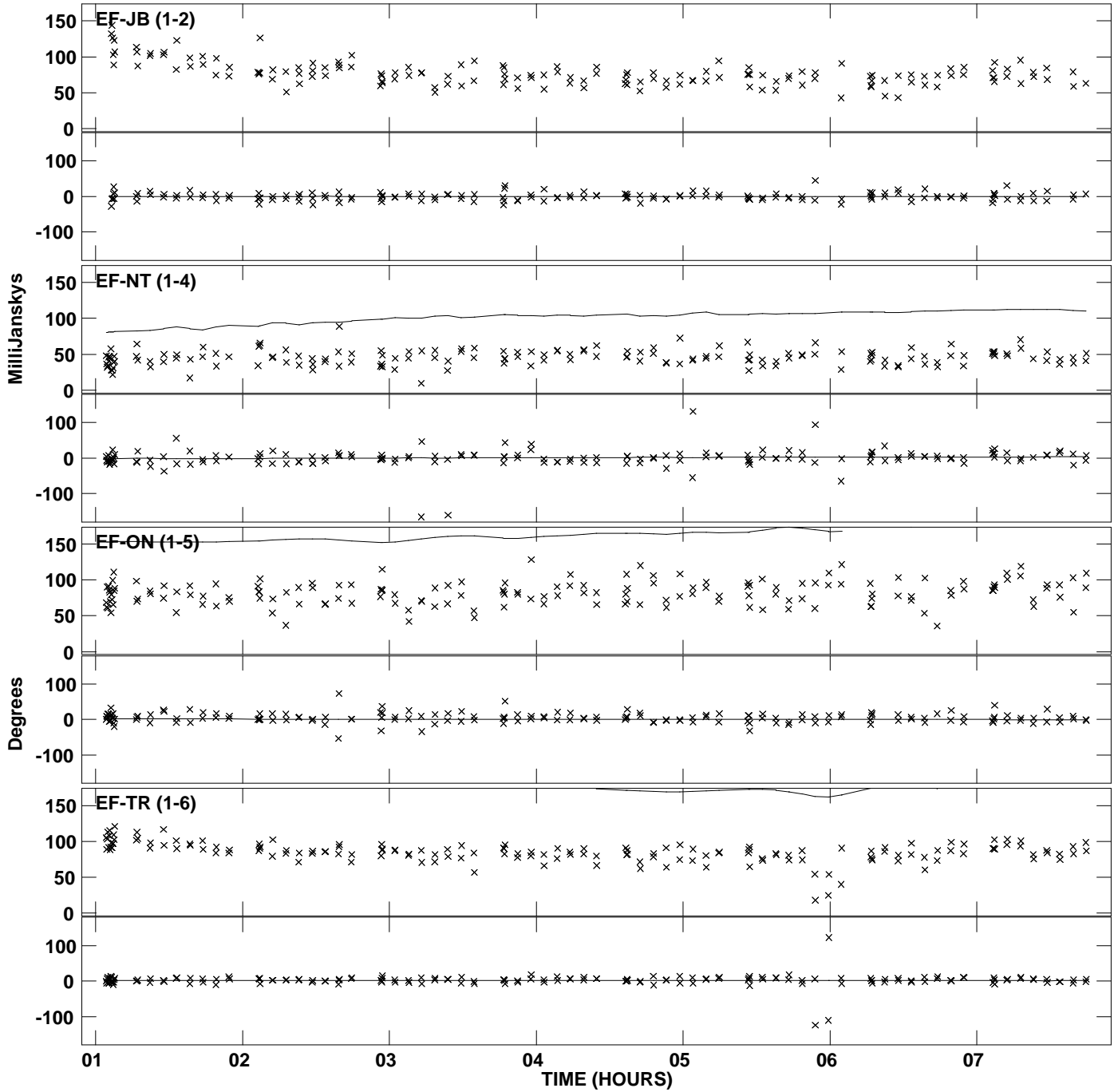
Plot file version 7 created 16-OCT-2012 12:07:14
Amplitude and Phase vs Time for J0645+0541.MULTI.1 Vect aver. CL # 2
IF 4 CHAN 1 STK LL of J0645+0541.ICL001.2



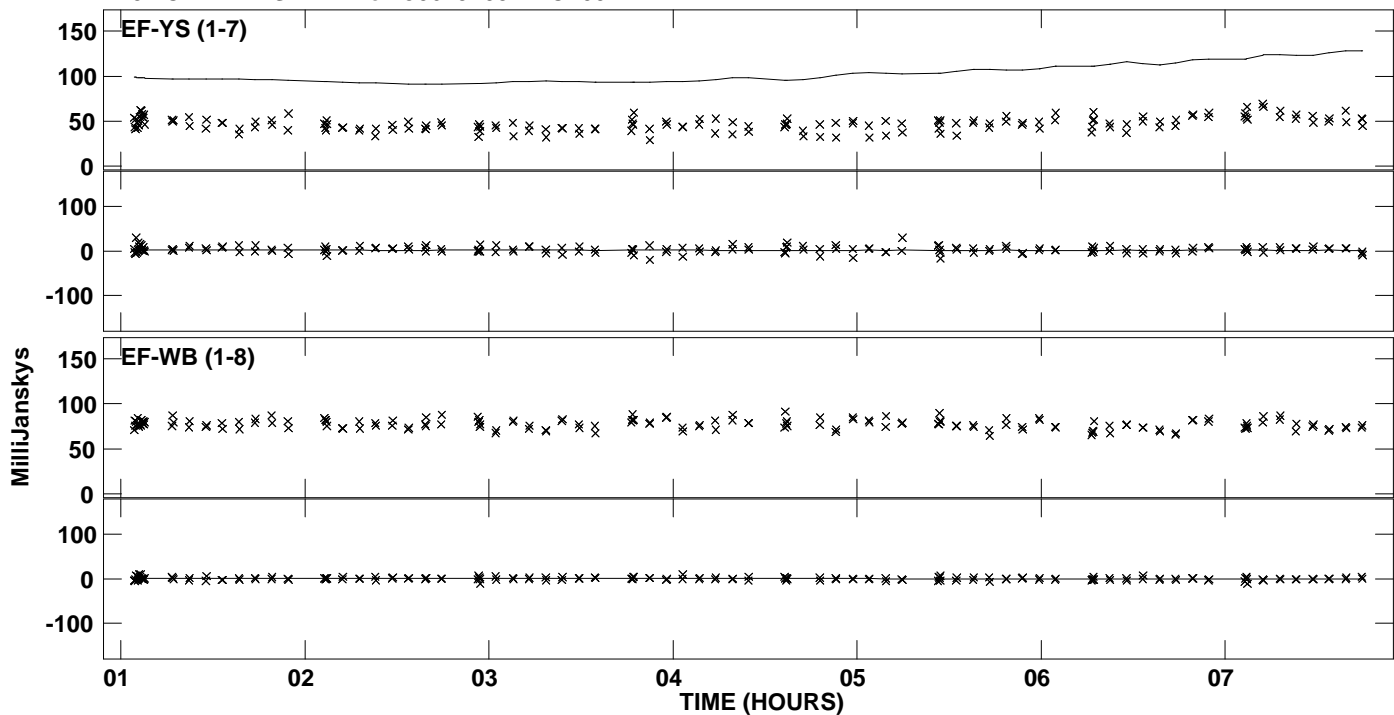
Plot file version 8 created 16-OCT-2012 12:07:14
Amplitude andPhase vs Time for J0645+0541.MULTI.1 Vect aver. CL # 2
IF 4 CHAN 1 STK LL of J0645+0541.ICL001.2



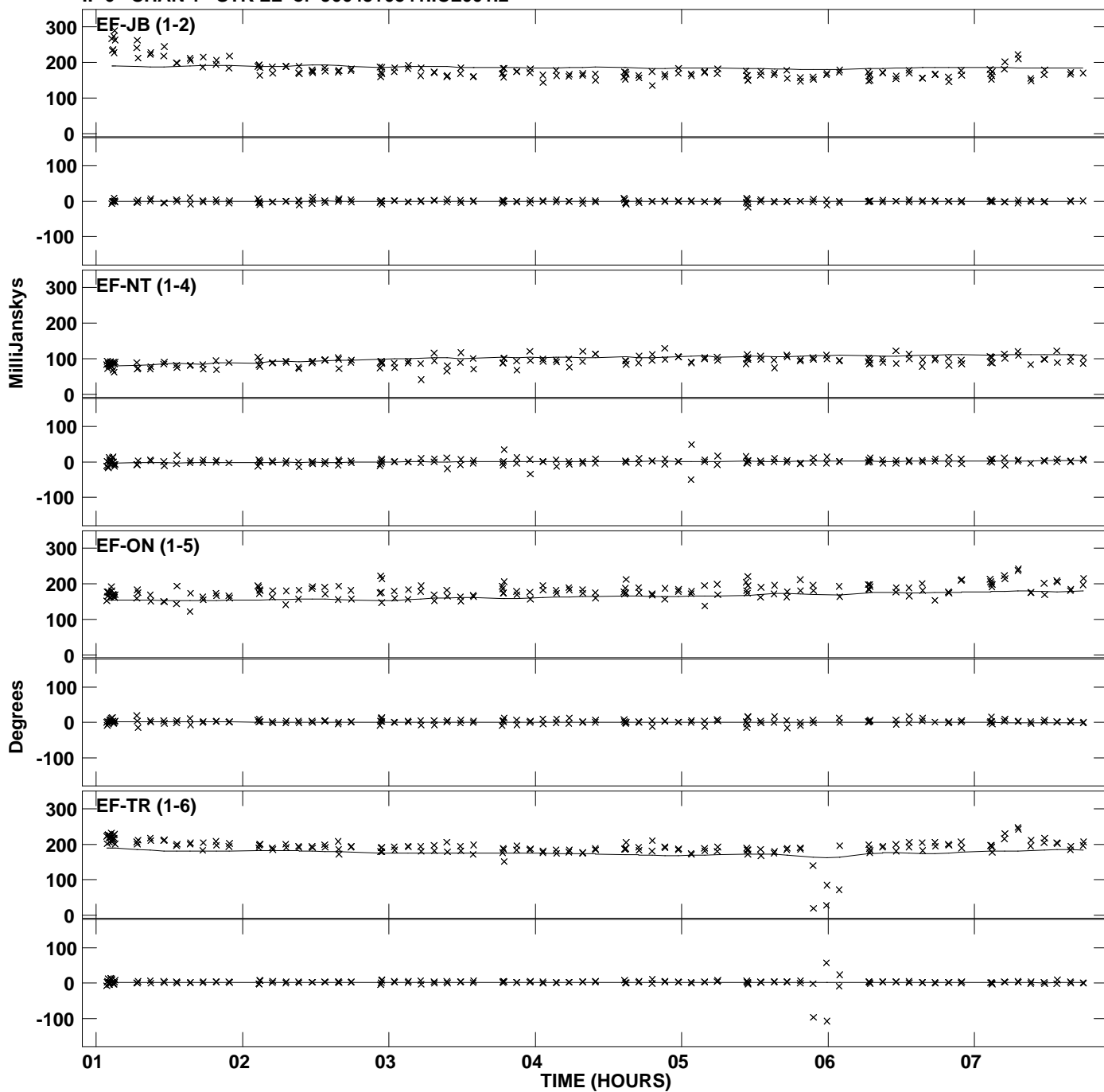
Plot file version 9 created 16-OCT-2012 12:07:14
Amplitude andPhase vs Time for J0645+0541.MULTI.1 Vect aver. CL # 2
IF 5 CHAN 1 STK LL of J0645+0541.ICL001.2



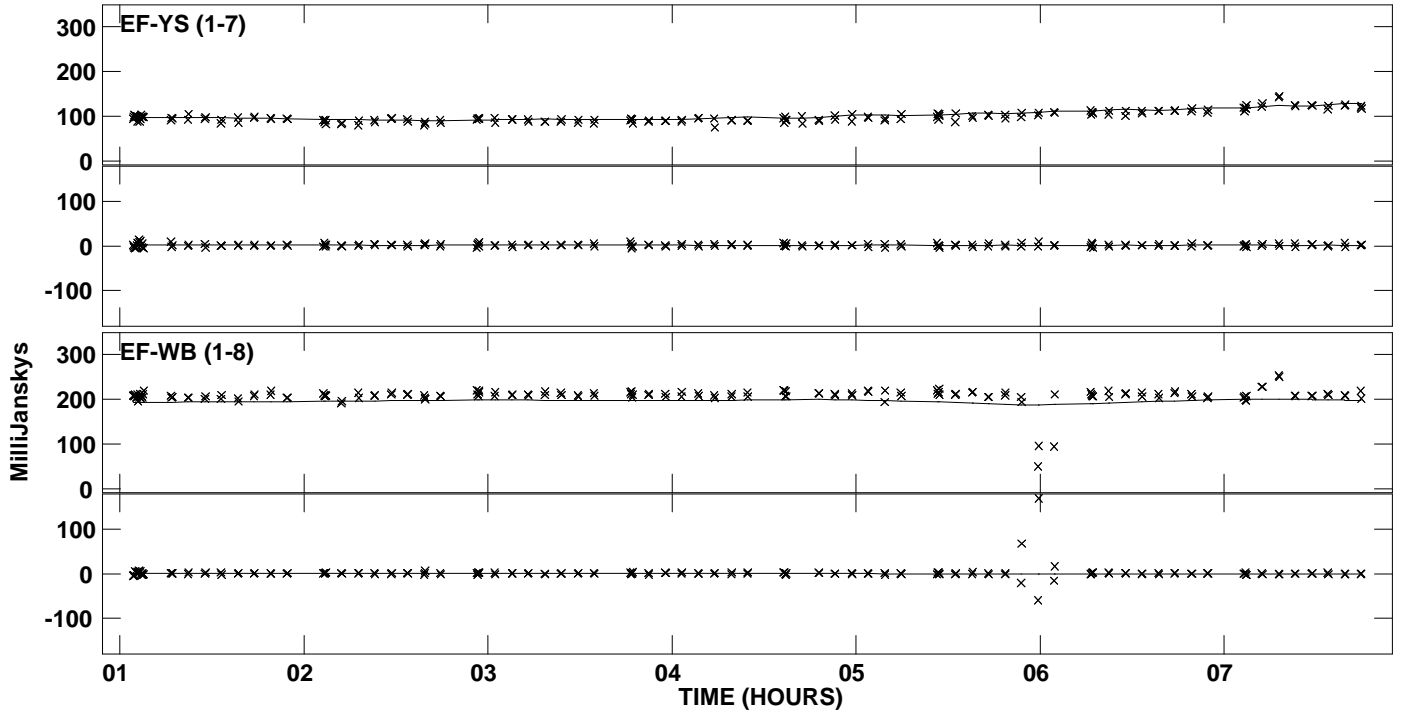
Plot file version 10 created 16-OCT-2012 12:07:14
Amplitude andPhase vs Time for J0645+0541.MULTI.1 Vect aver. CL # 2
IF 5 CHAN 1 STK LL of J0645+0541.ICL001.2



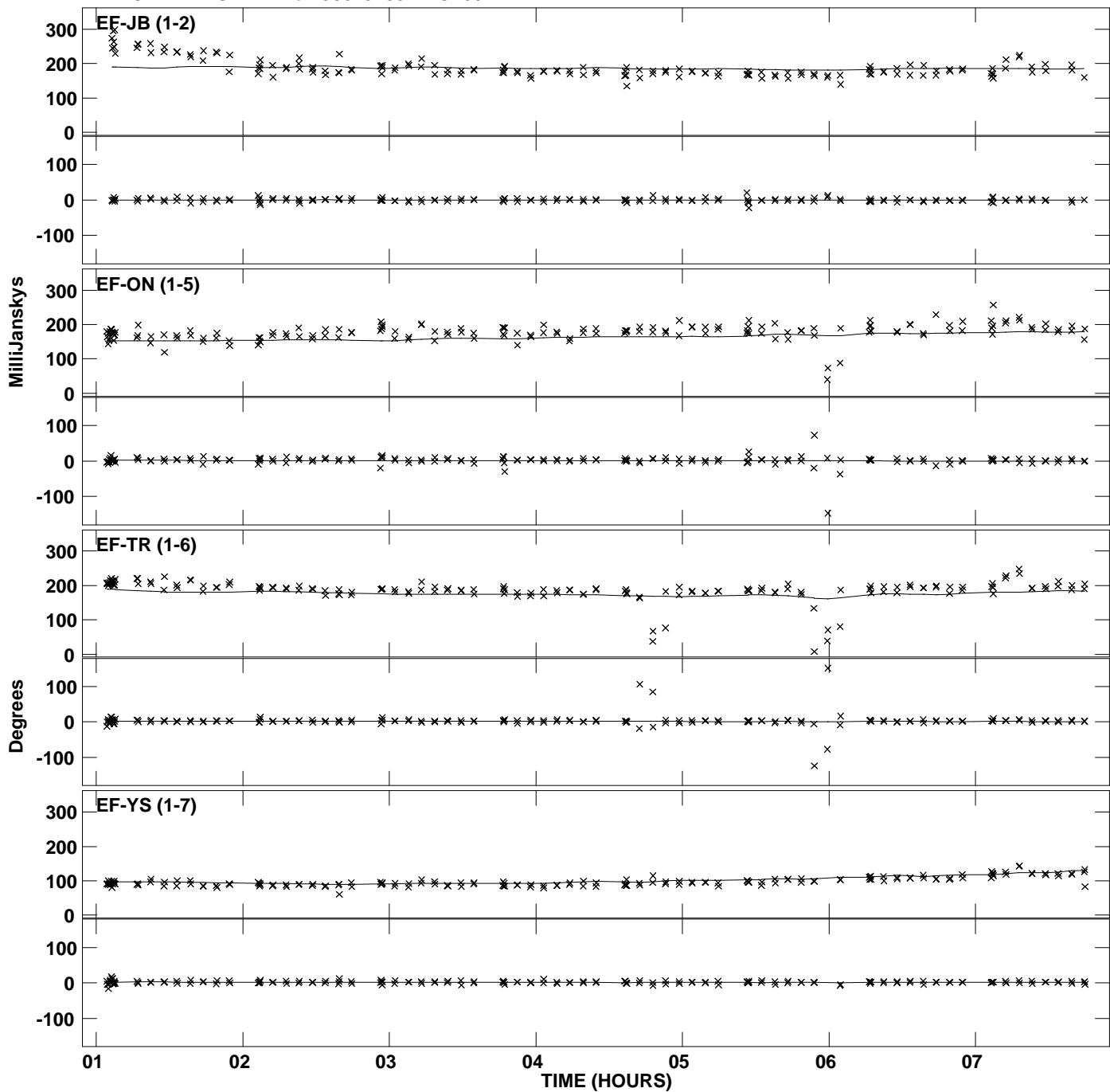
Plot file version 11 created 16-OCT-2012 12:07:14
Amplitude and Phase vs Time for J0645+0541.MULTI.1 Vect aver. CL # 2
IF 6 CHAN 1 STK LL of J0645+0541.ICL001.2



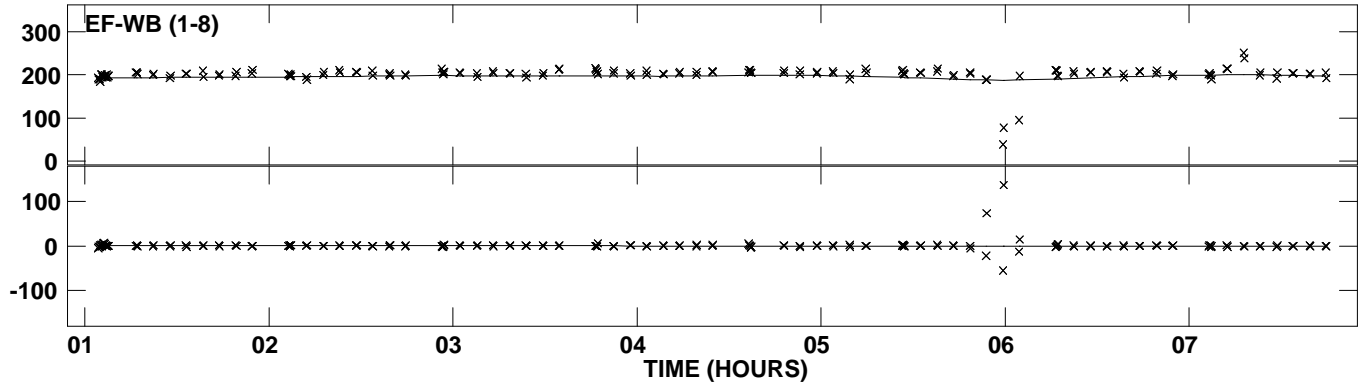
Plot file version 12 created 16-OCT-2012 12:07:14
Amplitude andPhase vs Time for J0645+0541.MULTI.1 Vect aver. CL # 2
IF 6 CHAN 1 STK LL of J0645+0541.ICL001.2



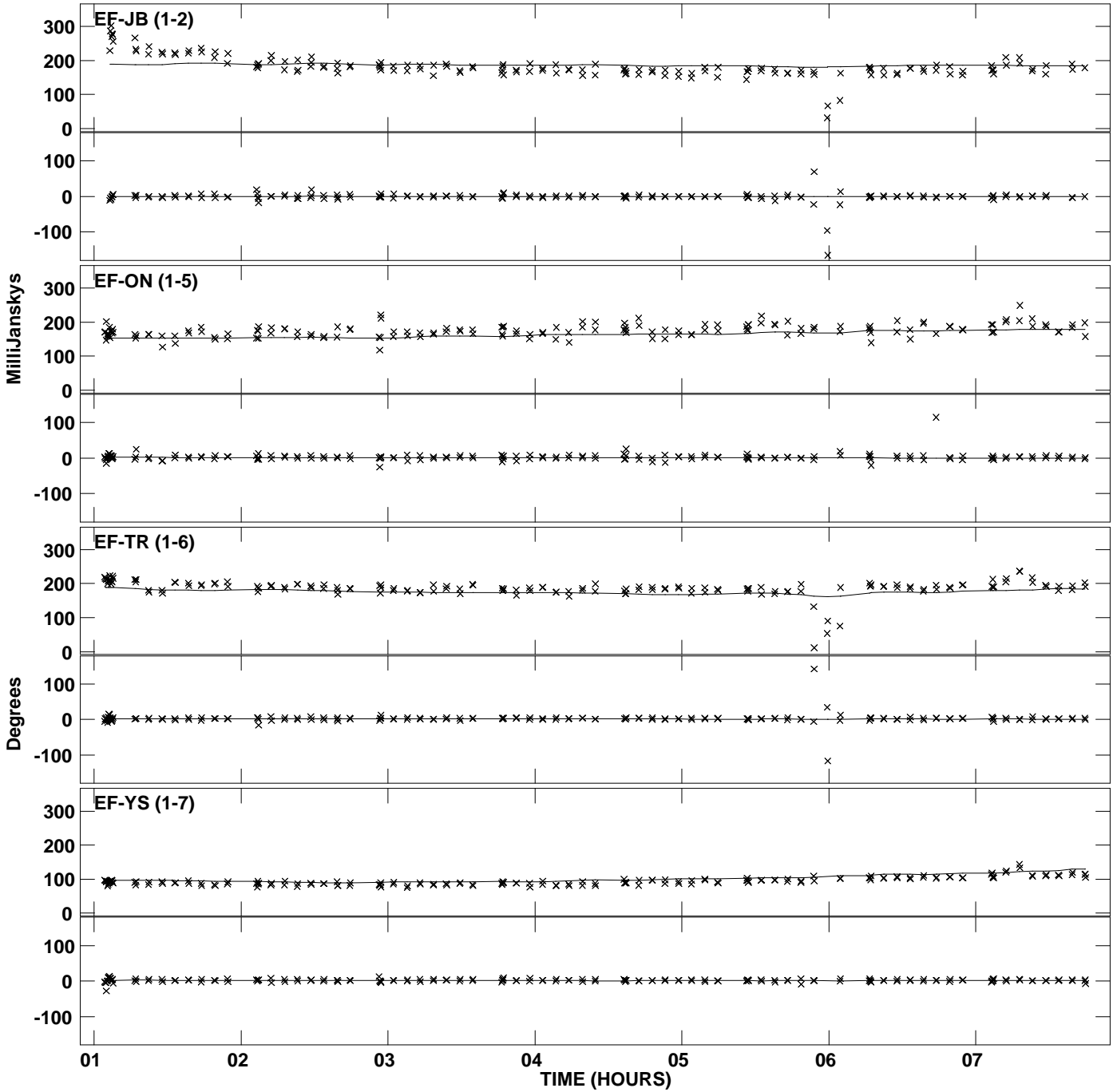
Plot file version 13 created 16-OCT-2012 12:07:14
Amplitude and Phase vs Time for J0645+0541.MULTI.1 Vect aver. CL # 2
IF 7 CHAN 1 STK LL of J0645+0541.ICL001.2



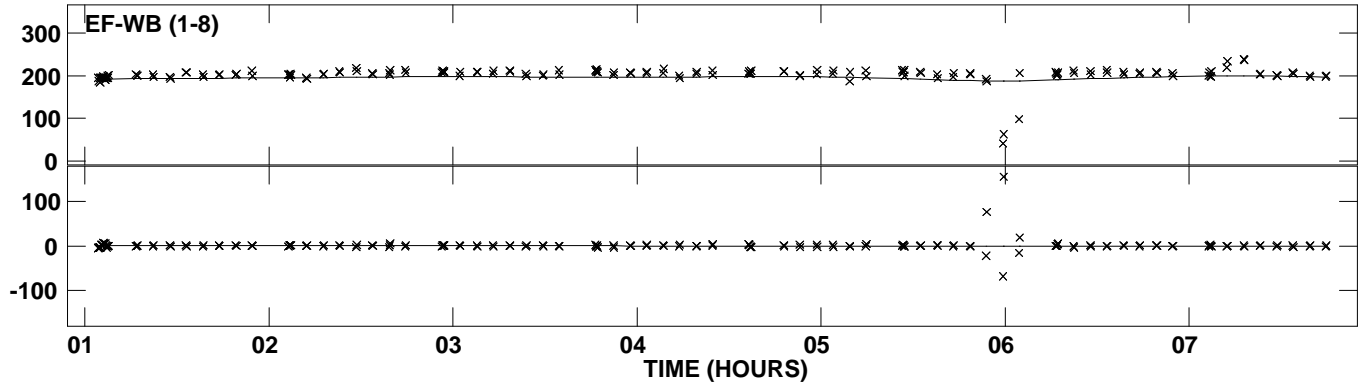
PLot file version 14 created 16-OCT-2012 12:07:14
Amplitude and Phase vs Time for J0645+0541.MULTI.1 Vect aver. CL # 2
IF 7 CHAN 1 STK LL of J0645+0541.ICL001.2



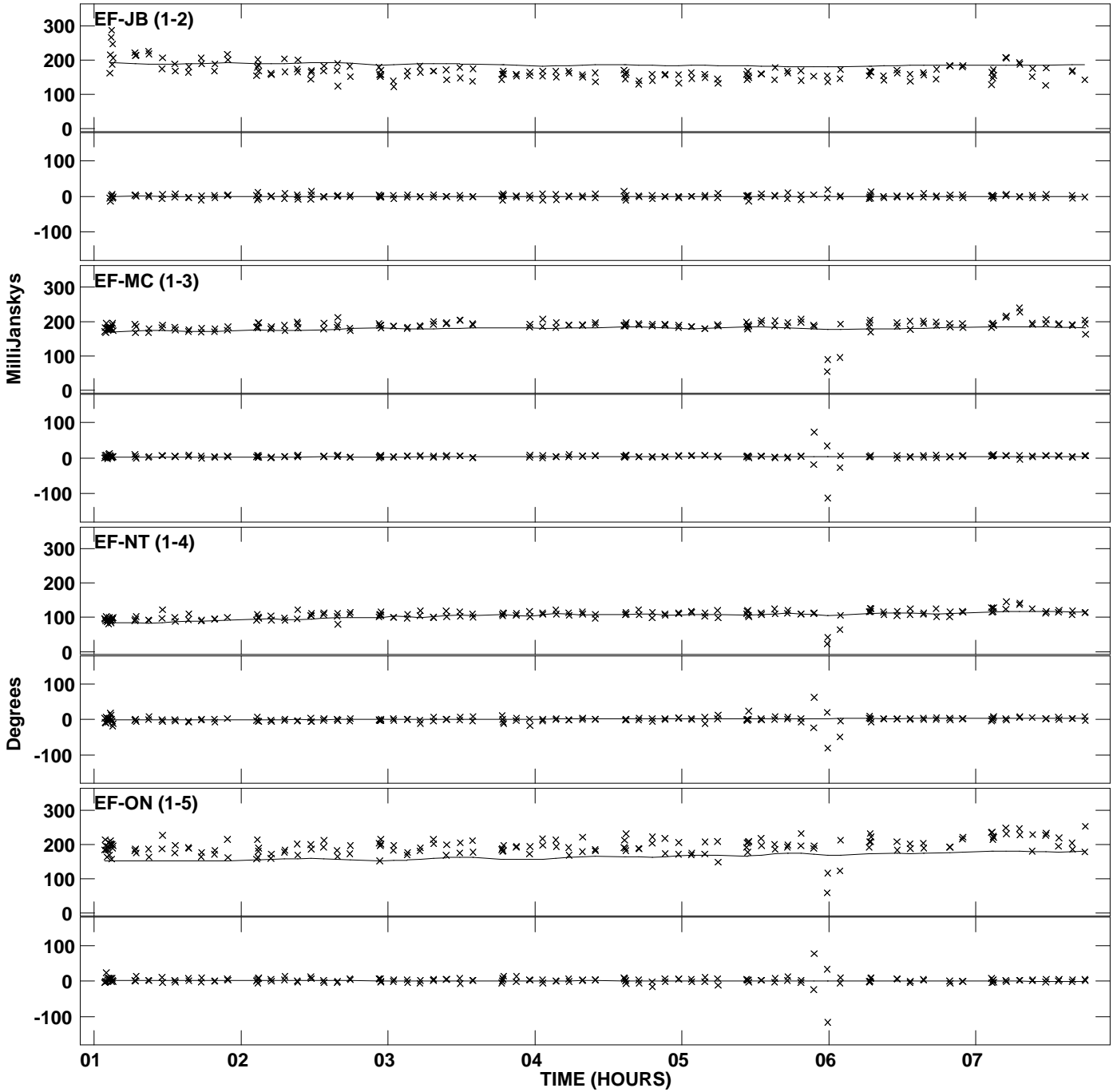
PLot file version 15 created 16-OCT-2012 12:07:14
Amplitude andPhase vs Time for J0645+0541.MULTI.1 Vect aver. CL # 2
IF 8 CHAN 1 STK LL of J0645+0541.ICL001.2



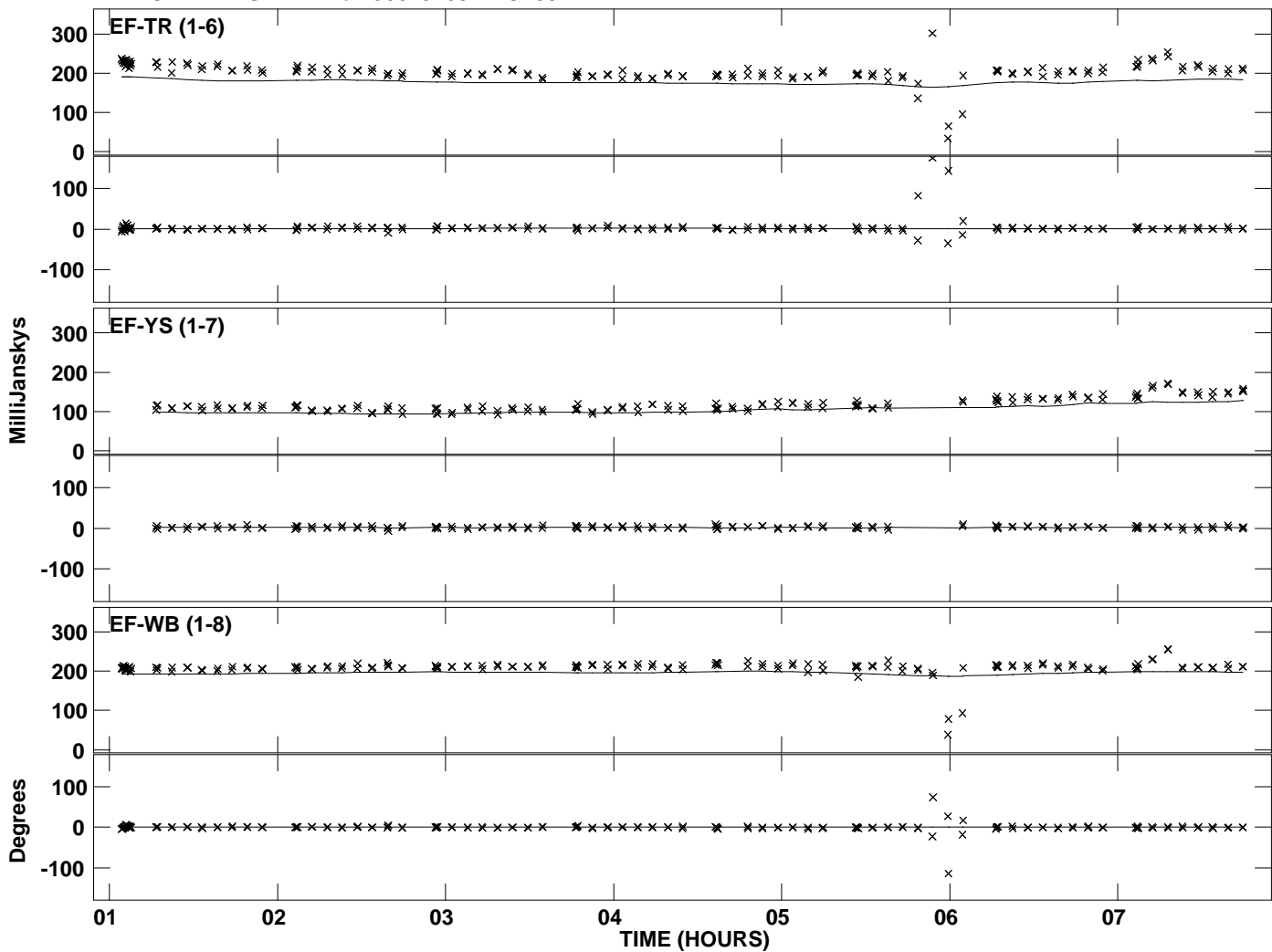
PLot file version 16 created 16-OCT-2012 12:07:14
Amplitude andPhase vs Time for J0645+0541.MULTI.1 Vect aver. CL # 2
IF 8 CHAN 1 STK LL of J0645+0541.ICL001.2



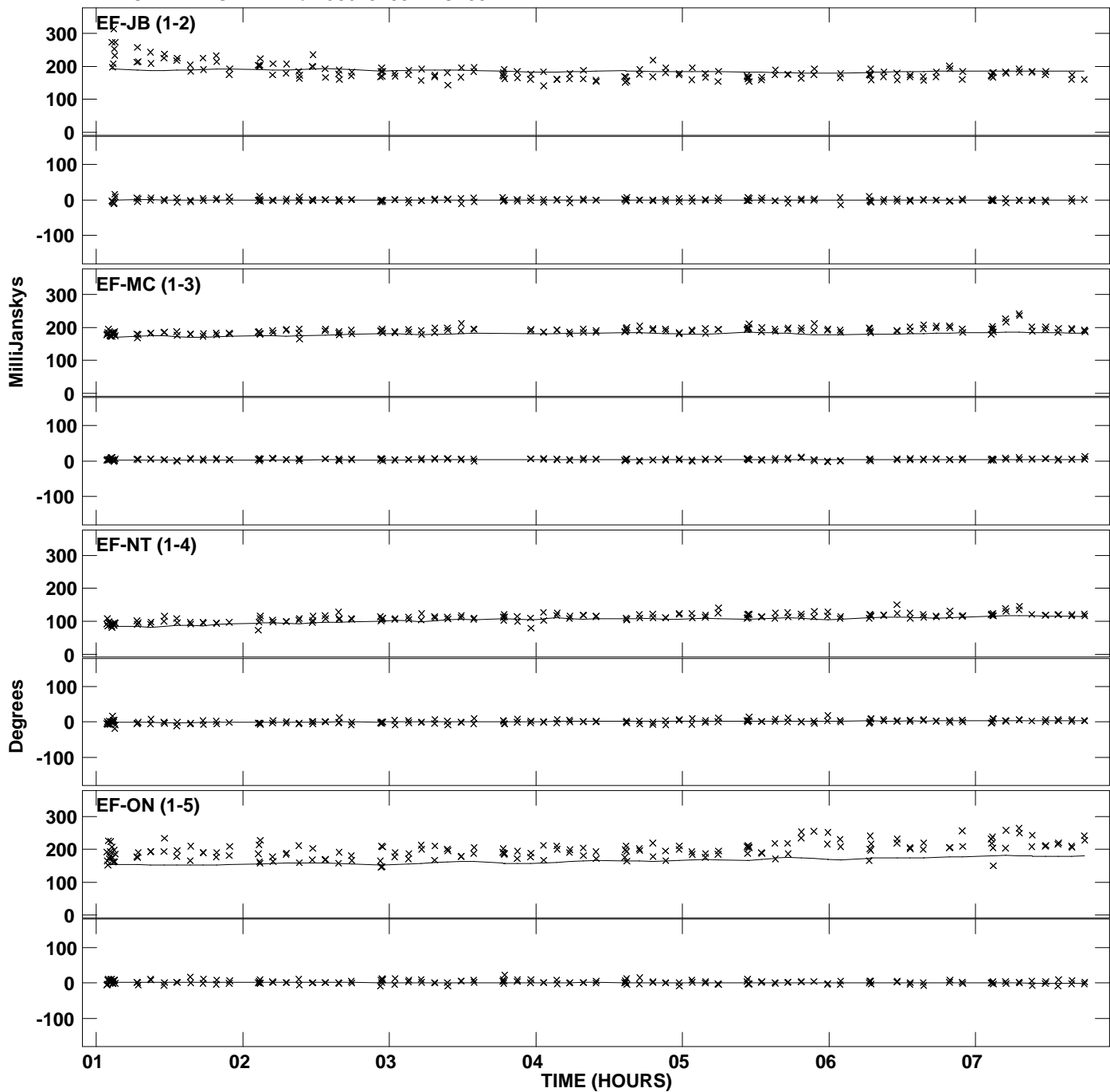
Plot file version 17 created 16-OCT-2012 12:07:14
Amplitude andPhase vs Time for J0645+0541.MULTI.1 Vect aver. CL # 2
IF 1 CHAN 1 STK RR of J0645+0541.ICL001.2



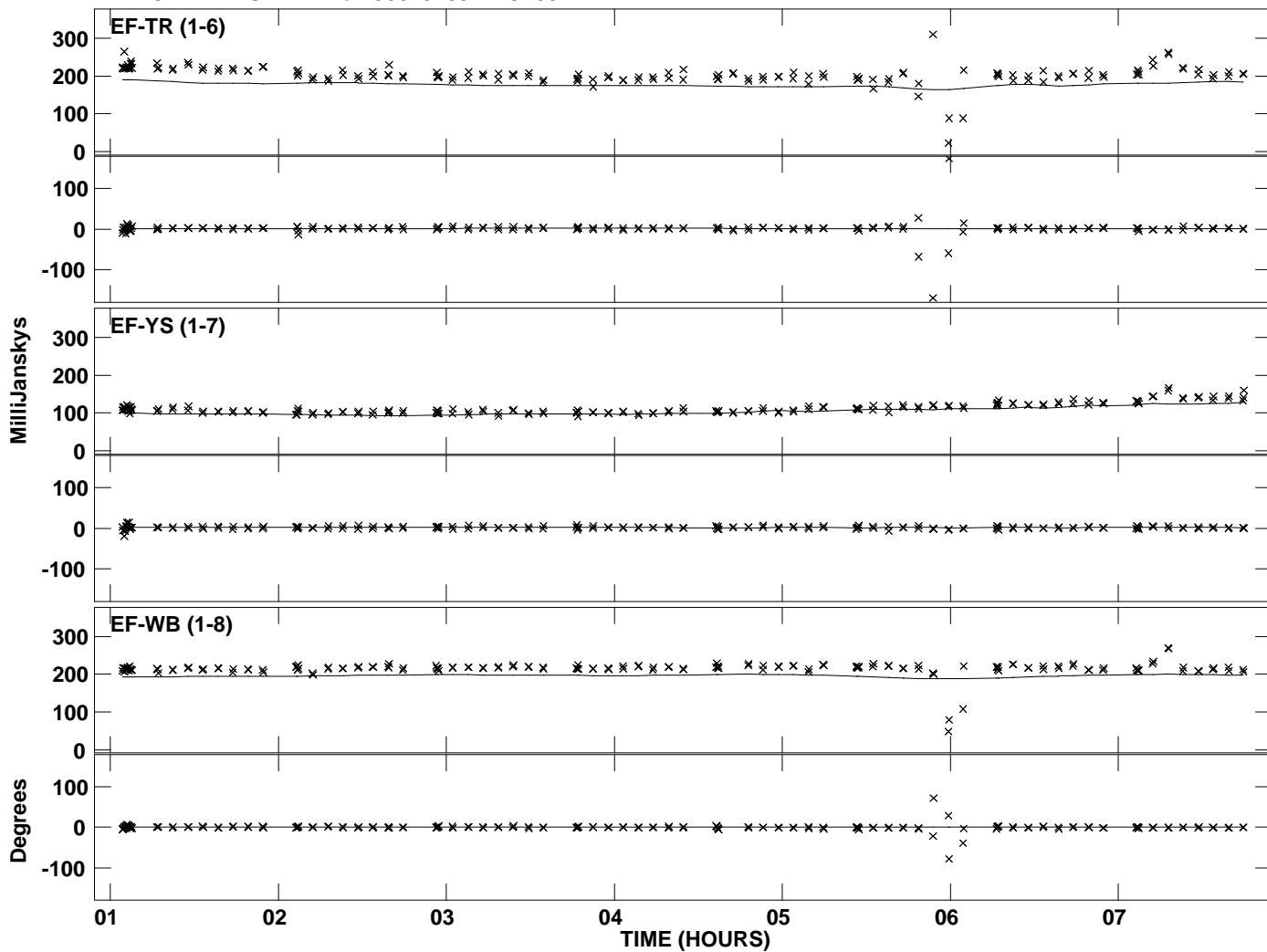
PLot file version 18 created 16-OCT-2012 12:07:14
Amplitude andPhase vs Time for J0645+0541.MULTI.1 Vect aver. CL # 2
IF 1 CHAN 1 STK RR of J0645+0541.ICL001.2



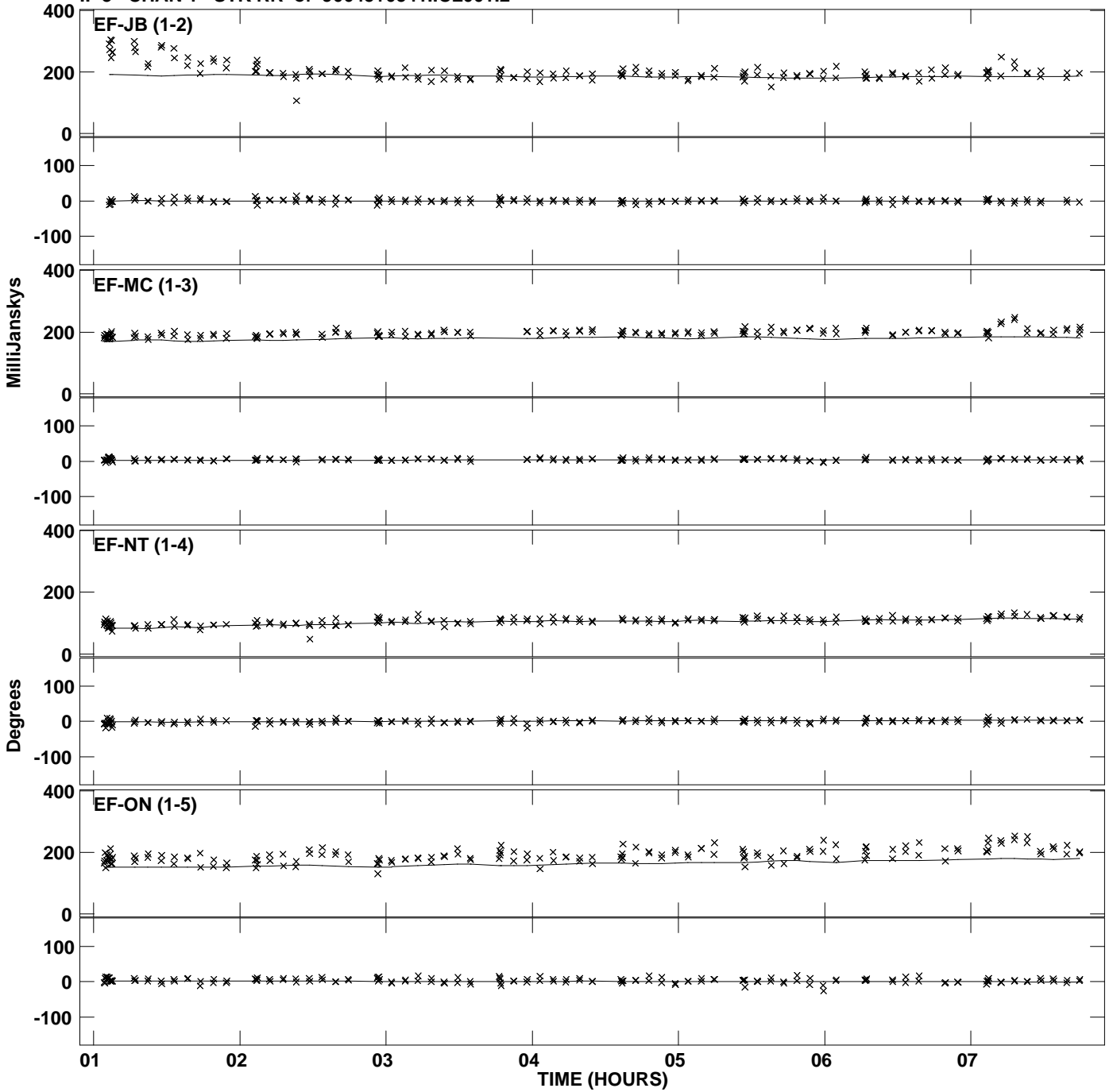
PLot file version 19 created 16-OCT-2012 12:07:15
Amplitude andPhase vs Time for J0645+0541.MULTI.1 Vect aver. CL # 2
IF 2 CHAN 1 STK RR of J0645+0541.ICL001.2



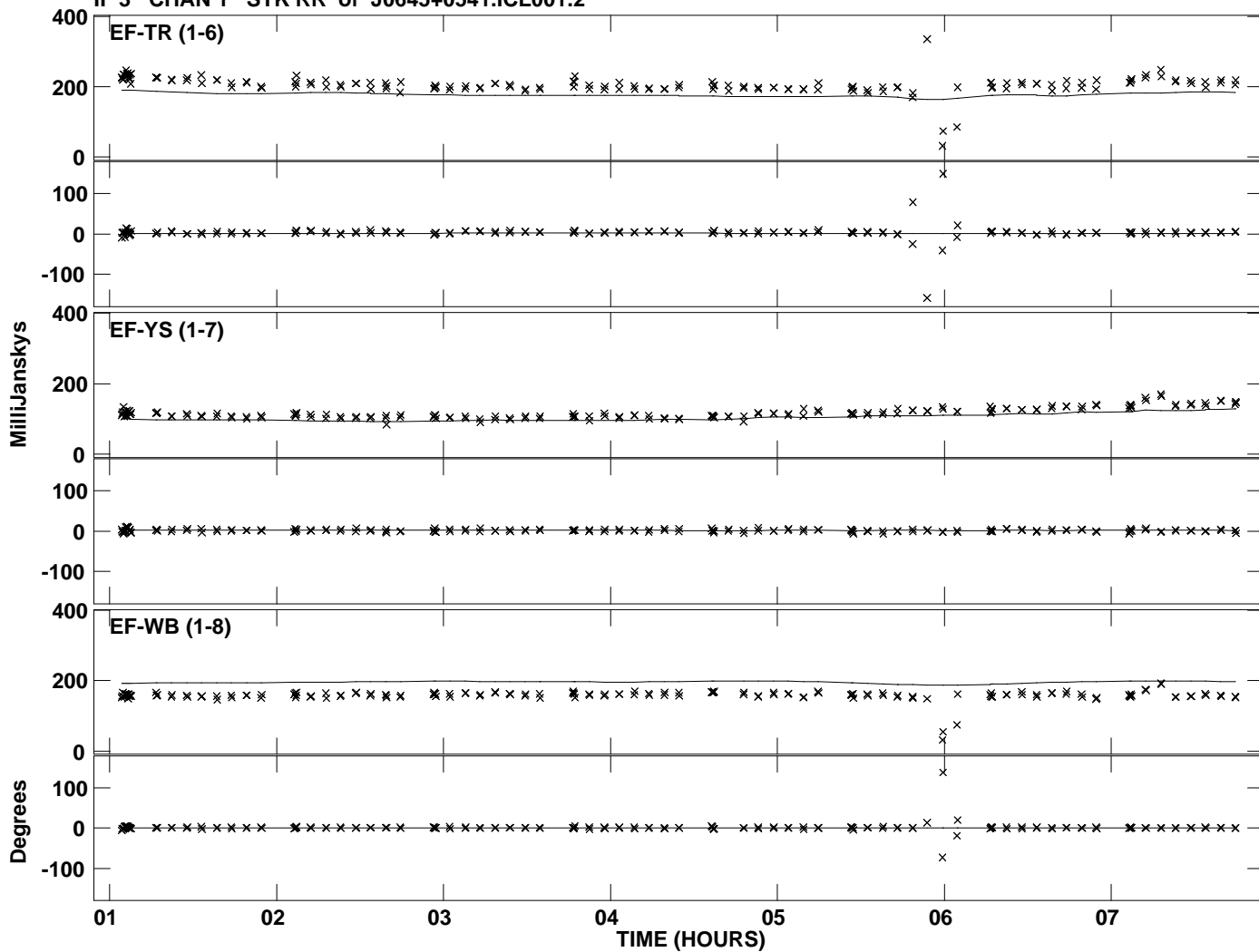
PLot file version 20 created 16-OCT-2012 12:07:15
Amplitude andPhase vs Time for J0645+0541.MULTI.1 Vect aver. CL # 2
IF 2 CHAN 1 STK RR of J0645+0541.ICL001.2



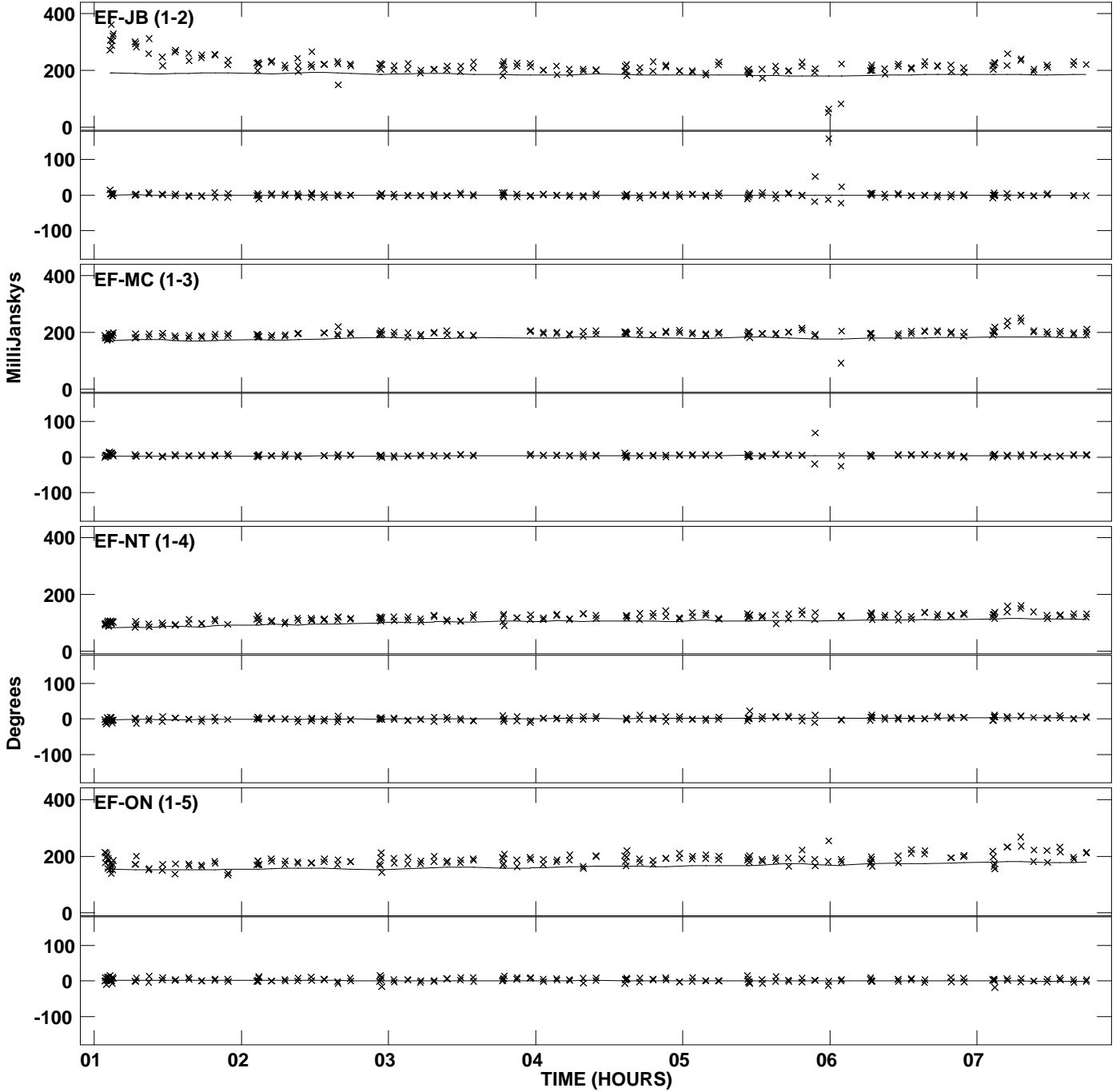
Plot file version 21 created 16-OCT-2012 12:07:15
Amplitude andPhase vs Time for J0645+0541.MULTI.1 Vect aver. CL # 2
IF 3 CHAN 1 STK RR of J0645+0541.ICL001.2



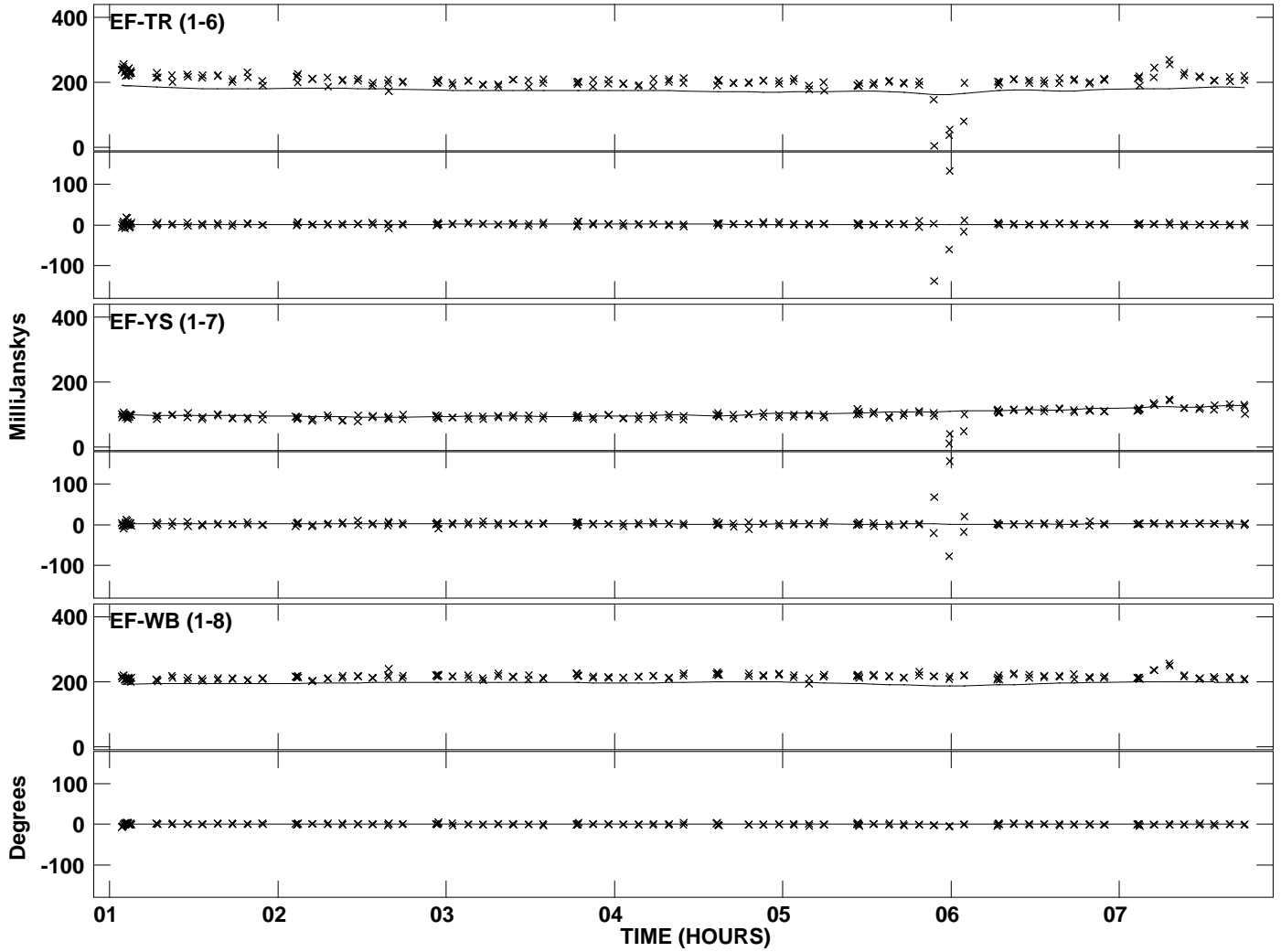
Plot file version 22 created 16-OCT-2012 12:07:15
Amplitude and Phase vs Time for J0645+0541.MULTI.1 Vect aver. CL # 2
IF 3 CHAN 1 STK RR of J0645+0541.ICL001.2



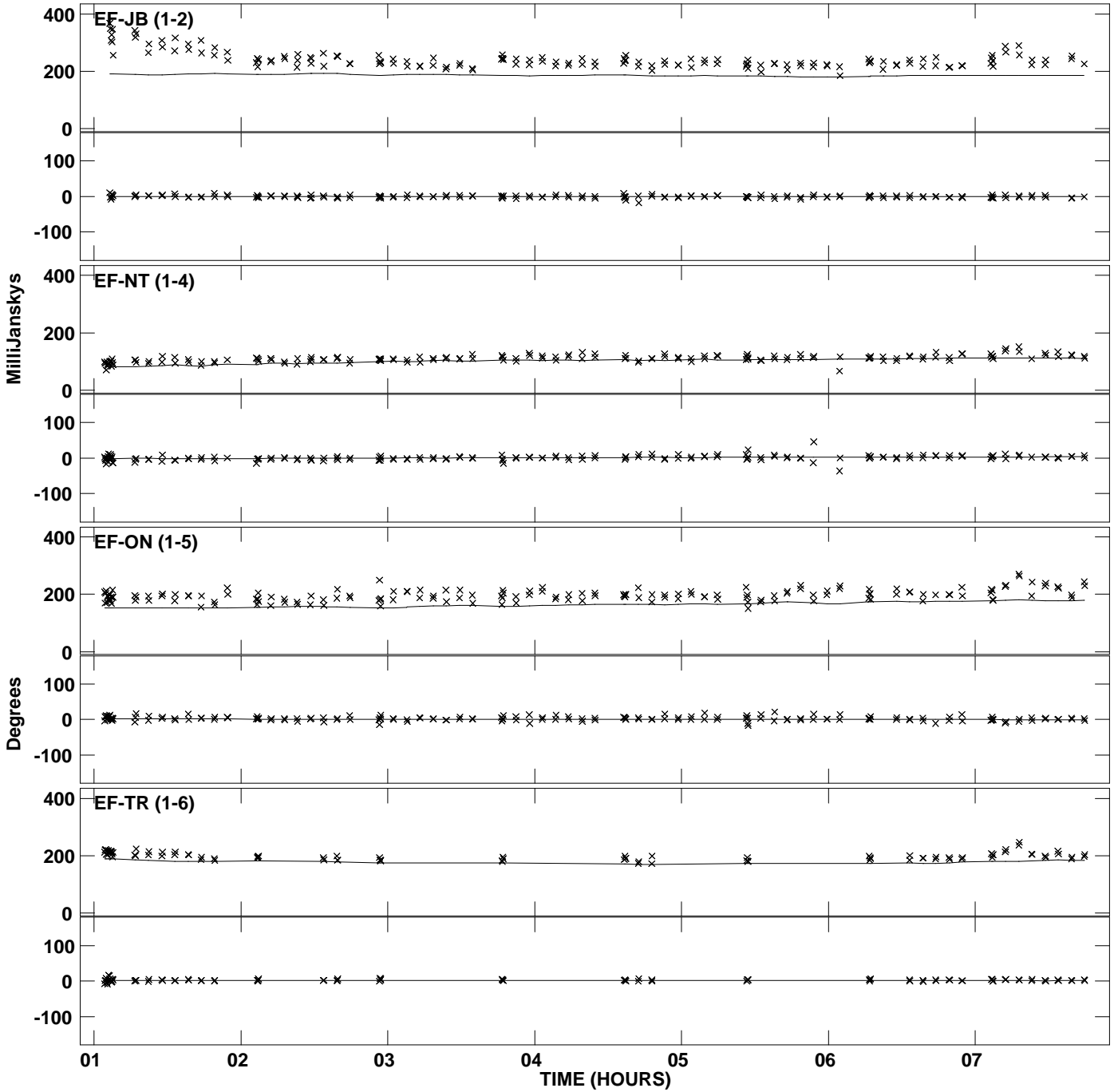
Plot file version 23 created 16-OCT-2012 12:07:15
Amplitude andPhase vs Time for J0645+0541.MULTI.1 Vect aver. CL # 2
IF 4 CHAN 1 STK RR of J0645+0541.ICL001.2



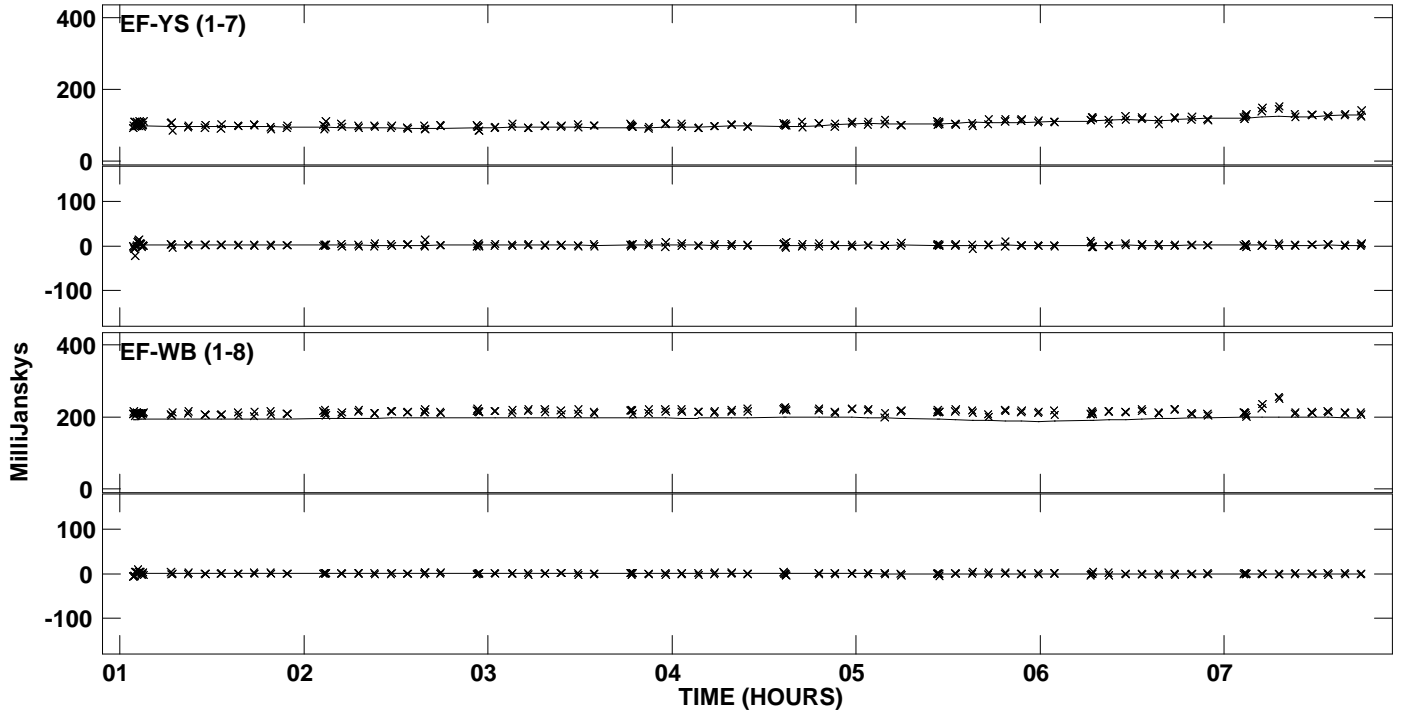
Plot file version 24 created 16-OCT-2012 12:07:15
Amplitude andPhase vs Time for J0645+0541.MULTI.1 Vect aver. CL # 2
IF 4 CHAN 1 STK RR of J0645+0541.ICL001.2



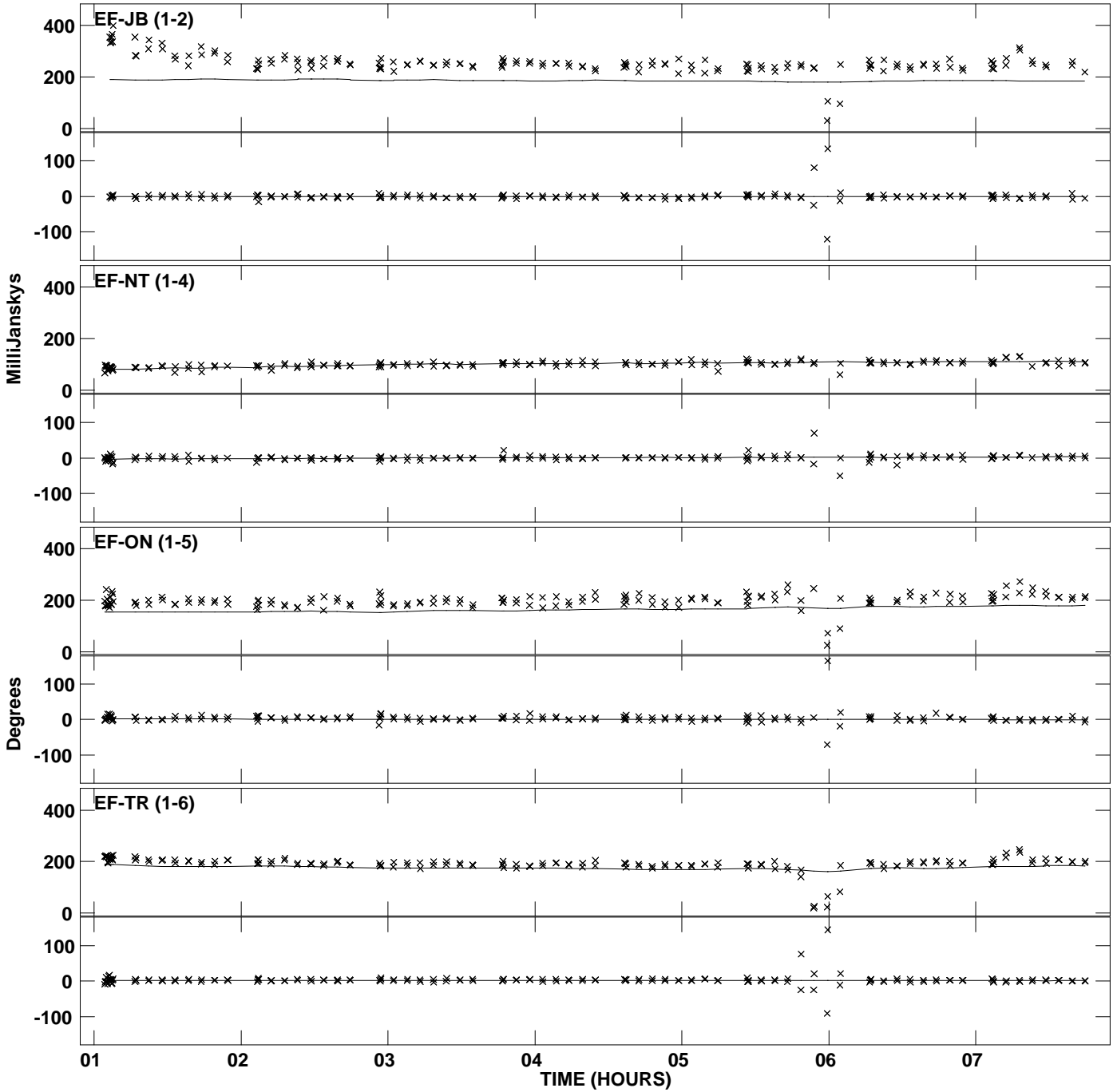
Plot file version 25 created 16-OCT-2012 12:07:15
Amplitude andPhase vs Time for J0645+0541.MULTI.1 Vect aver. CL # 2
IF 5 CHAN 1 STK RR of J0645+0541.ICL001.2



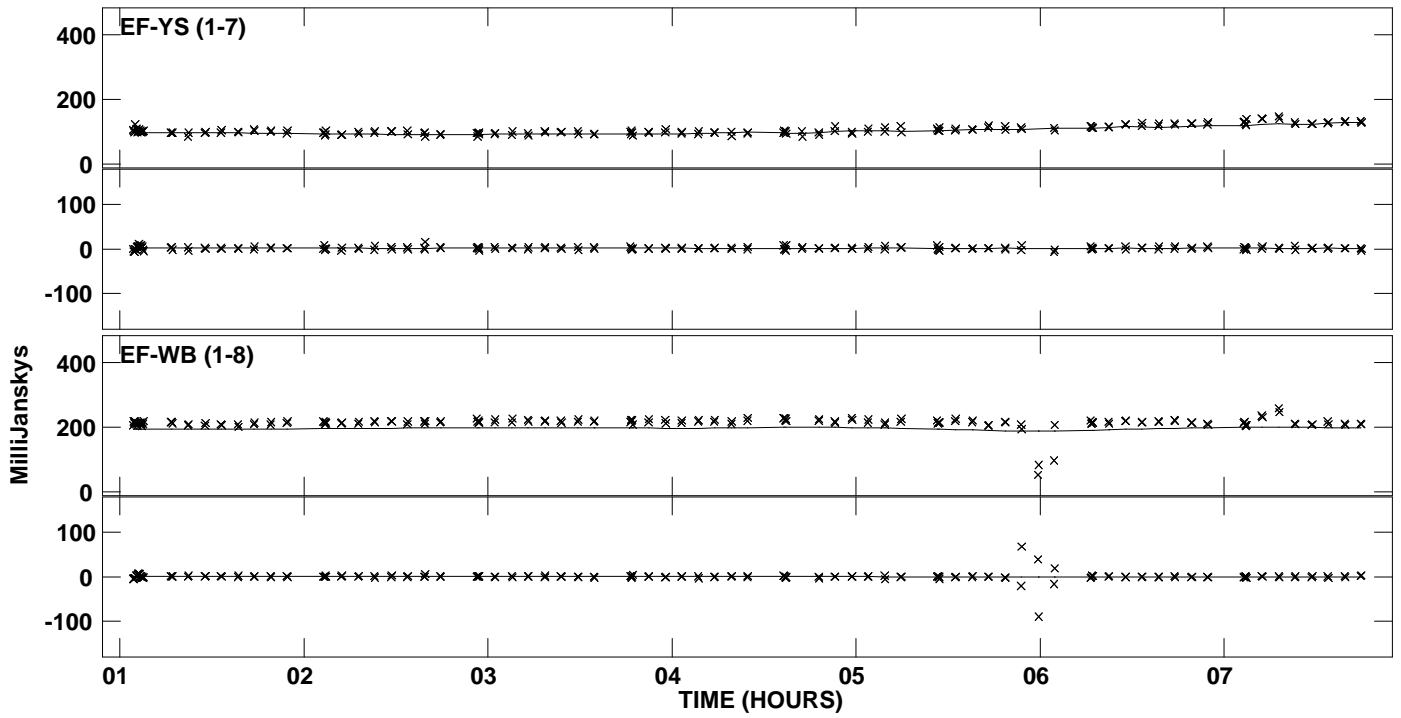
PLot file version 26 created 16-OCT-2012 12:07:15
Amplitude andPhase vs Time for J0645+0541.MULTI.1 Vect aver. CL # 2
IF 5 CHAN 1 STK RR of J0645+0541.ICL001.2



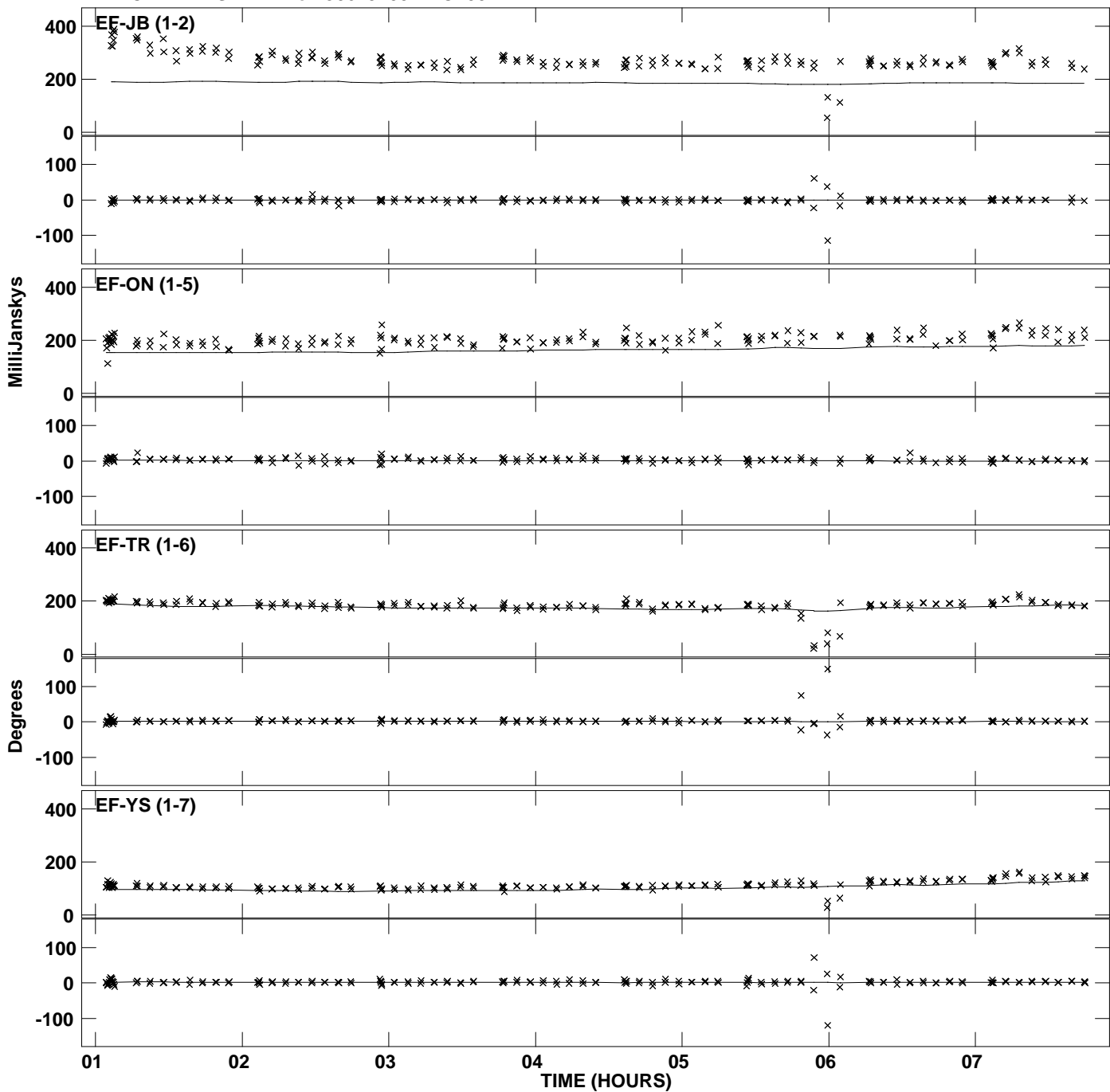
Plot file version 27 created 16-OCT-2012 12:07:15
Amplitude and Phase vs Time for J0645+0541.MULTI.1 Vect aver. CL # 2
IF 6 CHAN 1 STK RR of J0645+0541.ICL001.2



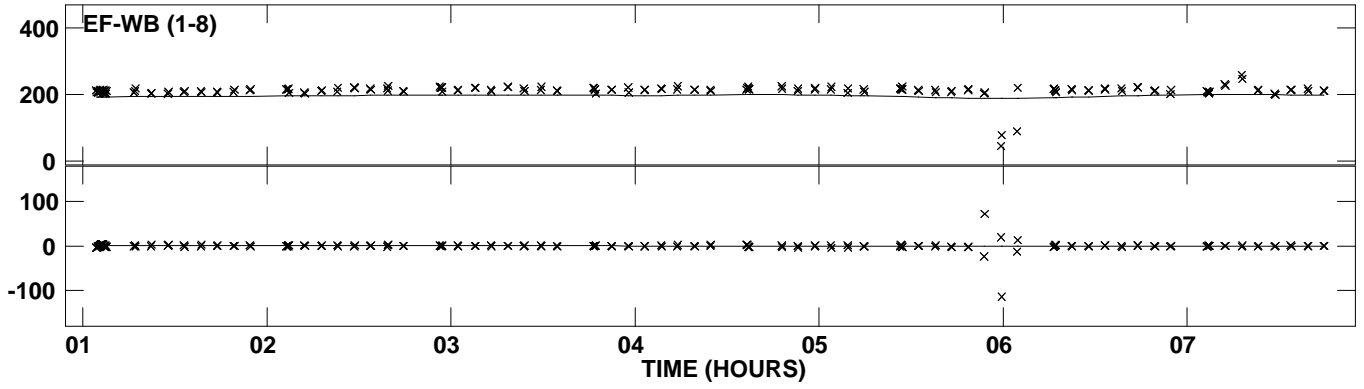
PLot file version 28 created 16-OCT-2012 12:07:15
Amplitude andPhase vs Time for J0645+0541.MULTI.1 Vect aver. CL # 2
IF 6 CHAN 1 STK RR of J0645+0541.ICL001.2



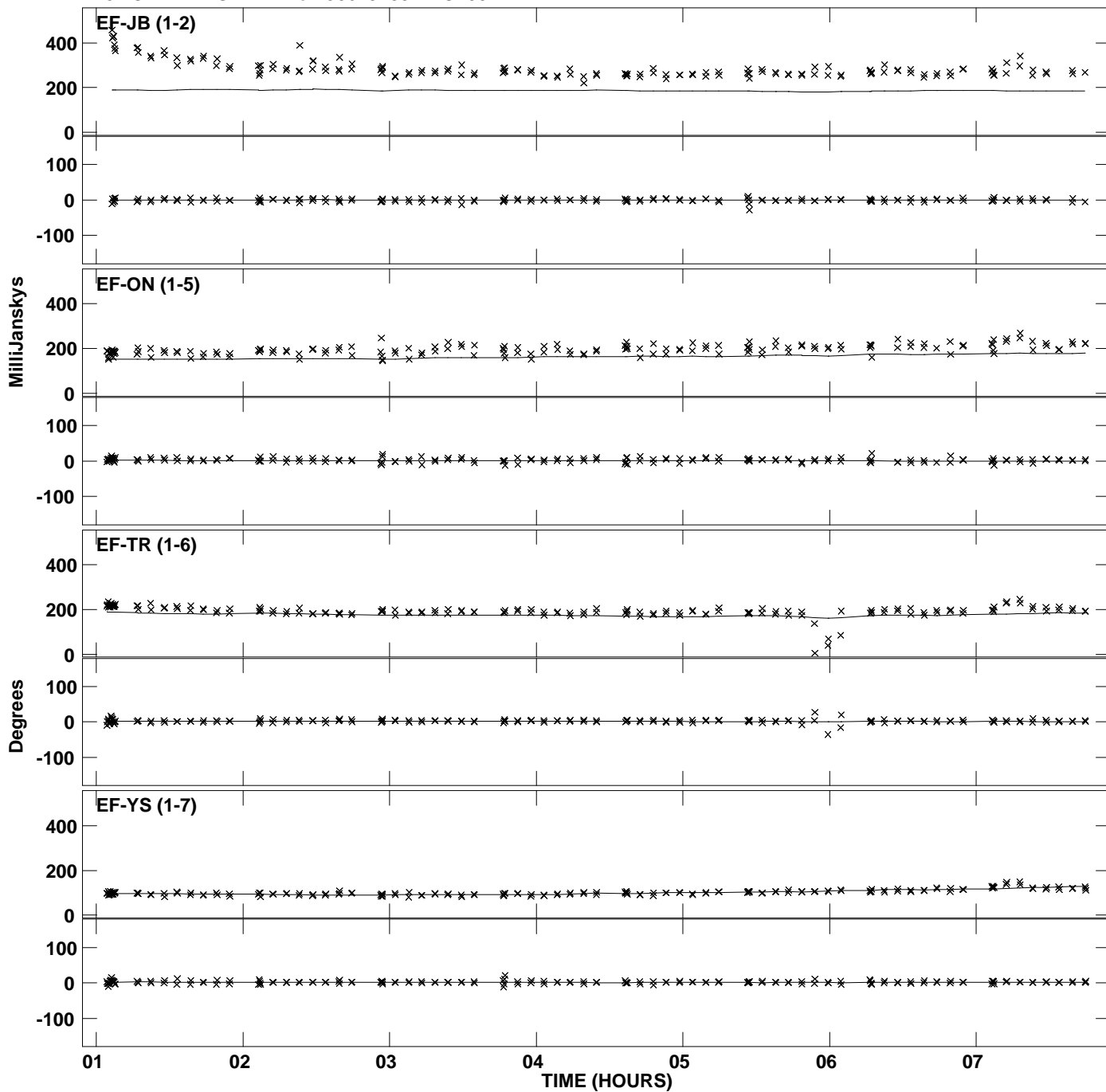
PLot file version 29 created 16-OCT-2012 12:07:15
Amplitude andPhase vs Time for J0645+0541.MULTI.1 Vect aver. CL # 2
IF 7 CHAN 1 STK RR of J0645+0541.ICL001.2



PLot file version 30 created 16-OCT-2012 12:07:15
Amplitude andPhase vs Time for J0645+0541.MULTI.1 Vect aver. CL # 2
IF 7 CHAN 1 STK RR of J0645+0541.ICL001.2



PLot file version 31 created 16-OCT-2012 12:07:15
Amplitude andPhase vs Time for J0645+0541.MULTI.1 Vect aver. CL # 2
IF 8 CHAN 1 STK RR of J0645+0541.ICL001.2



PLot file version 32 created 16-OCT-2012 12:07:15
Amplitude andPhase vs Time for J0645+0541.MULTI.1 Vect aver. CL # 2
IF 8 CHAN 1 STK RR of J0645+0541.ICL001.2

