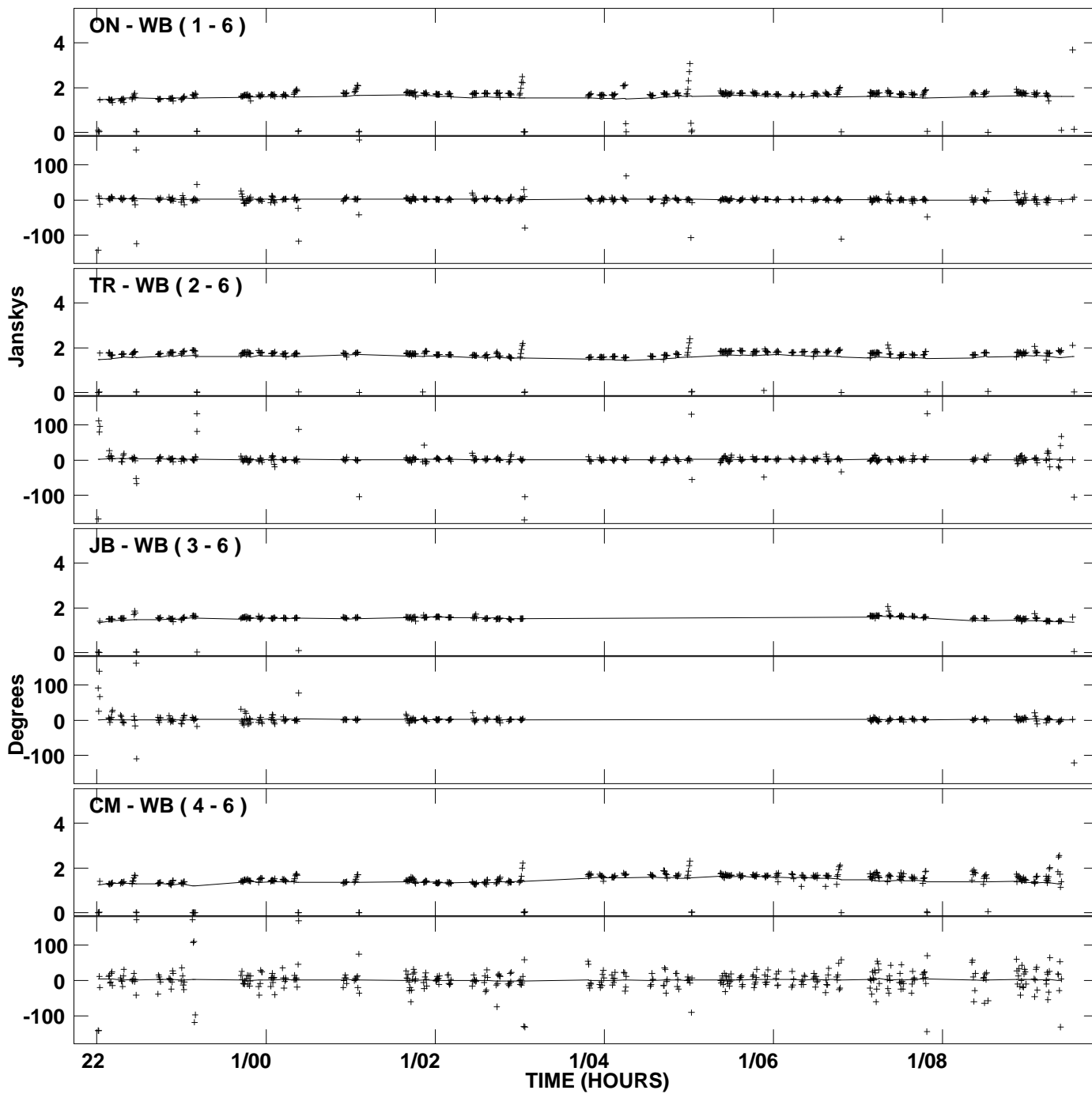
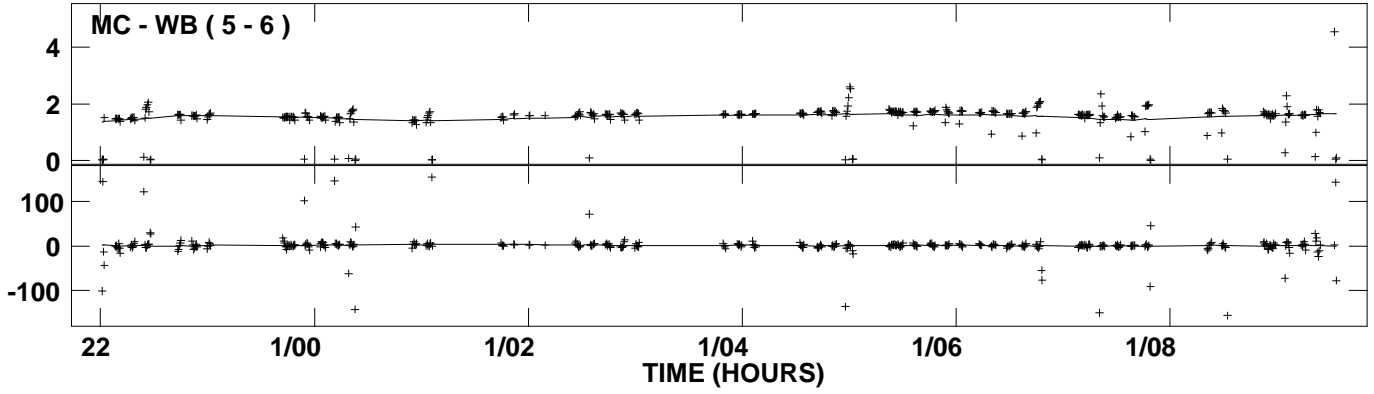


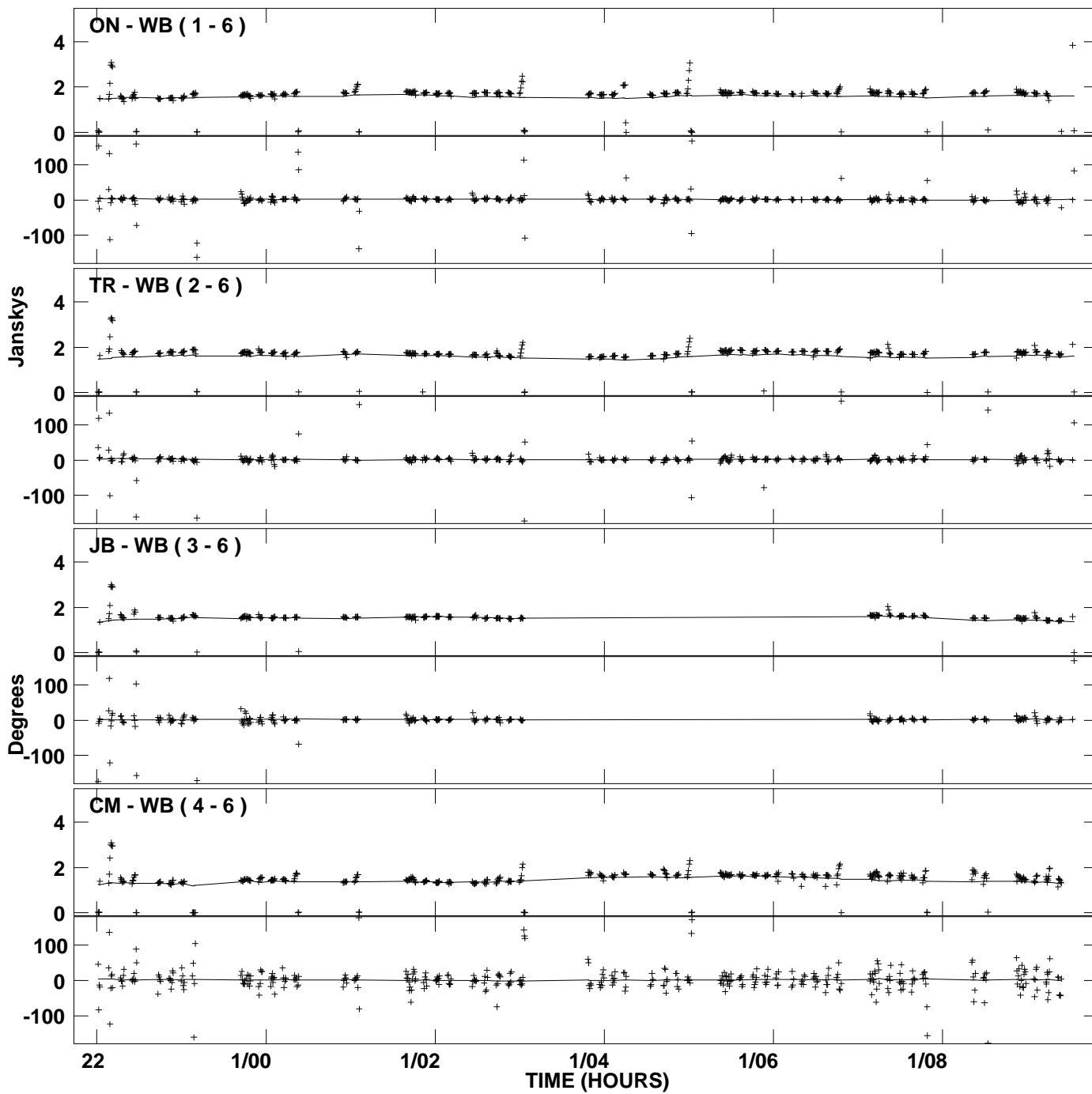
PLot file version 1 created 22-MAY-2006 18:56:54  
Amplitude and Phase vs Time for J2007+4029.MULTI.1 Vect aver. CL # 3  
IF 1 CHAN 1 STK LL of J2007+4029.ICL001.3



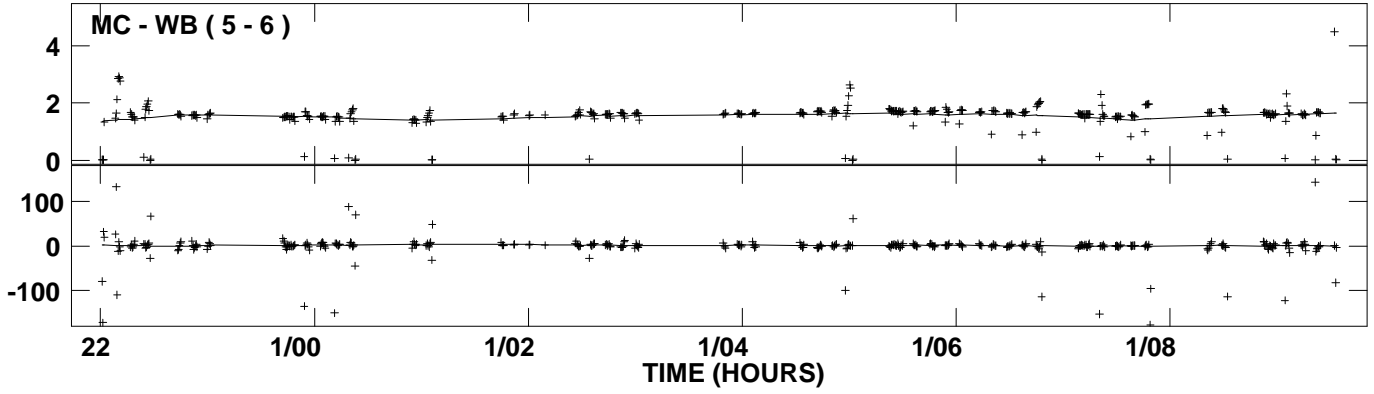
PLot file version 2 created 22-MAY-2006 18:56:54  
Amplitude and Phase vs Time for J2007+4029.MULTI.1 Vect aver. CL # 3  
IF 1 CHAN 1 STK LL of J2007+4029.ICL001.3



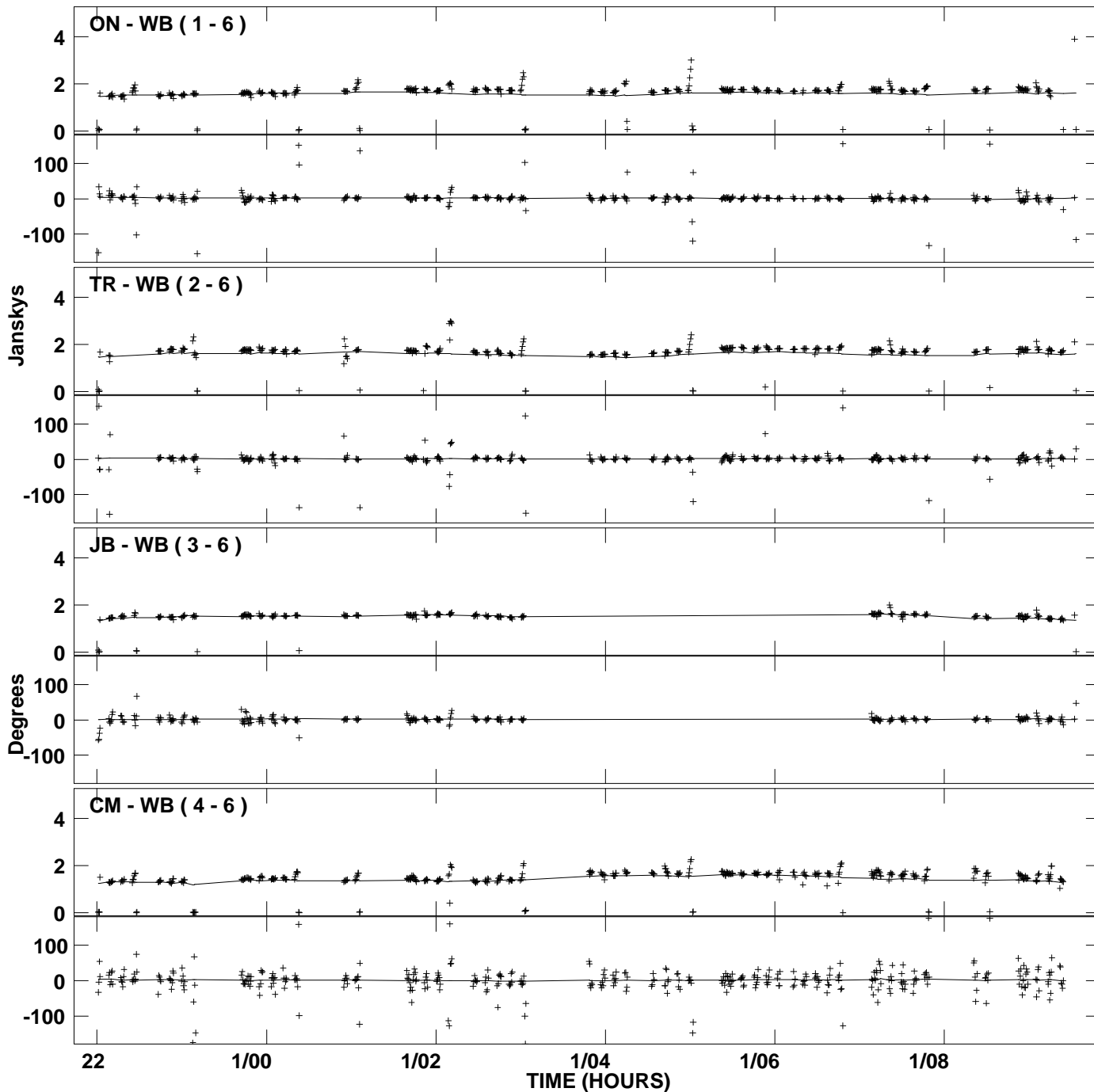
PLot file version 3 created 22-MAY-2006 18:56:55  
Amplitude and Phase vs Time for J2007+4029.MULTI.1 Vect aver. CL # 3  
IF 2 CHAN 1 STK LL of J2007+4029.ICL001.3



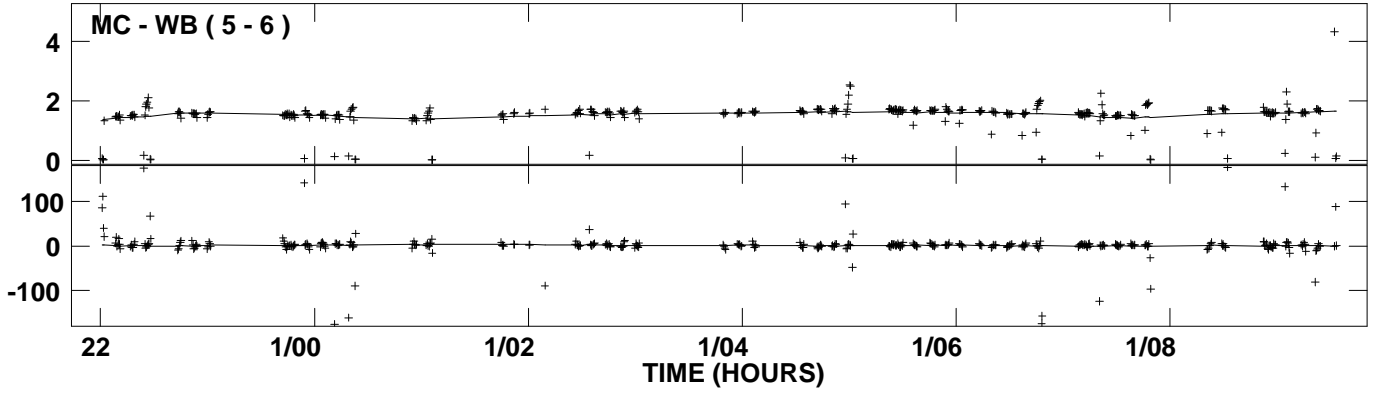
PLot file version 4 created 22-MAY-2006 18:56:55  
Amplitude and Phase vs Time for J2007+4029.MULTI.1 Vect aver. CL # 3  
IF 2 CHAN 1 STK LL of J2007+4029.ICL001.3



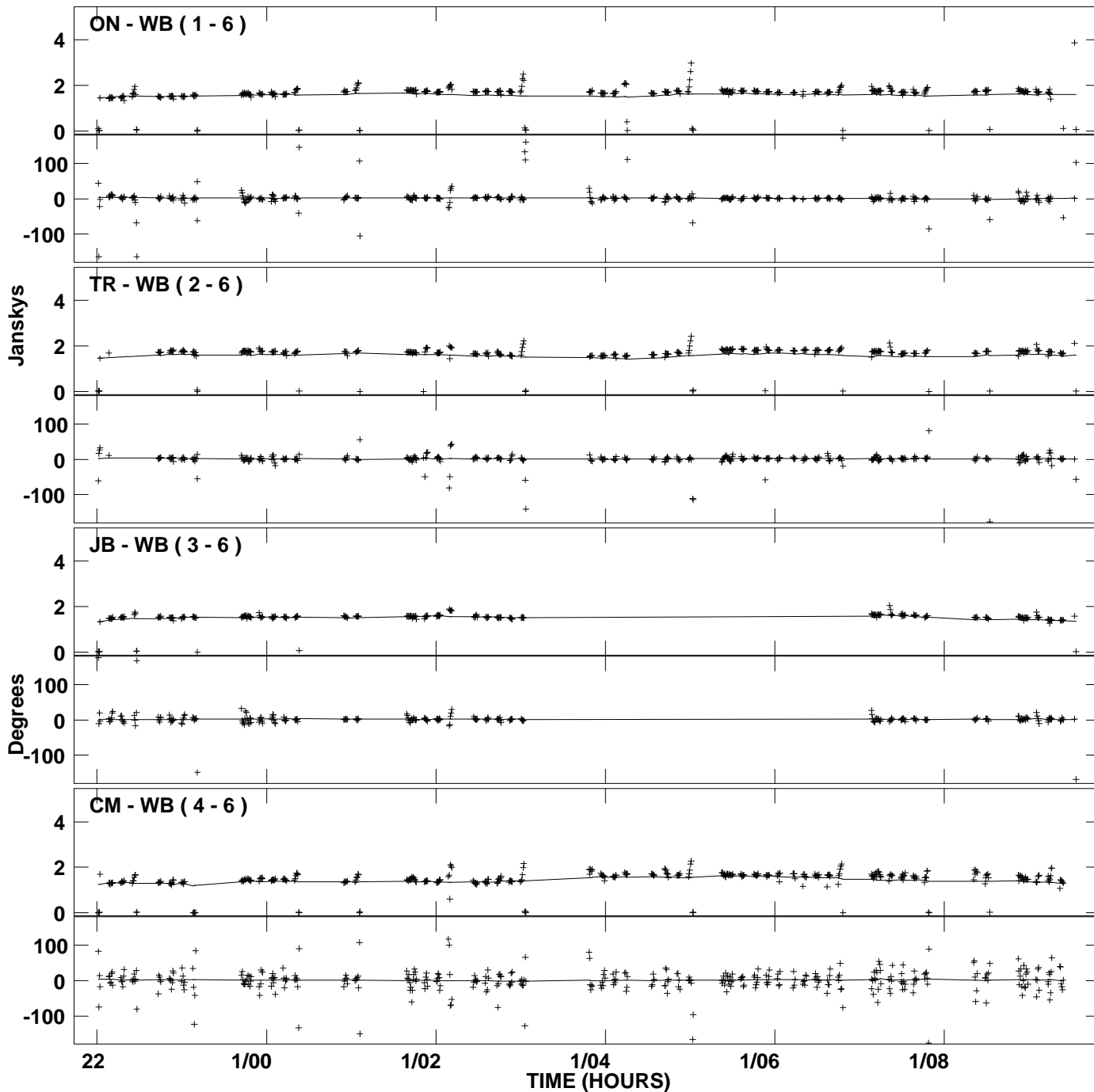
PLot file version 5 created 22-MAY-2006 18:56:56  
Amplitude and Phase vs Time for J2007+4029.MULTI.1 Vect aver. CL # 3  
IF 1 CHAN 1 STK RR of J2007+4029.ICL001.3



PLot file version 6 created 22-MAY-2006 18:56:56  
Amplitude andPhase vs Time for J2007+4029.MULTI.1 Vect aver. CL # 3  
IF 1 CHAN 1 STK RR of J2007+4029.ICL001.3



PLot file version 7 created 22-MAY-2006 18:56:56  
Amplitude and Phase vs Time for J2007+4029.MULTI.1 Vect aver. CL # 3  
IF 2 CHAN 1 STK RR of J2007+4029.ICL001.3



PLot file version 8 created 22-MAY-2006 18:56:57  
Amplitude andPhase vs Time for J2007+4029.MULTI.1 Vect aver. CL # 3  
IF 2 CHAN 1 STK RR of J2007+4029.ICL001.3

