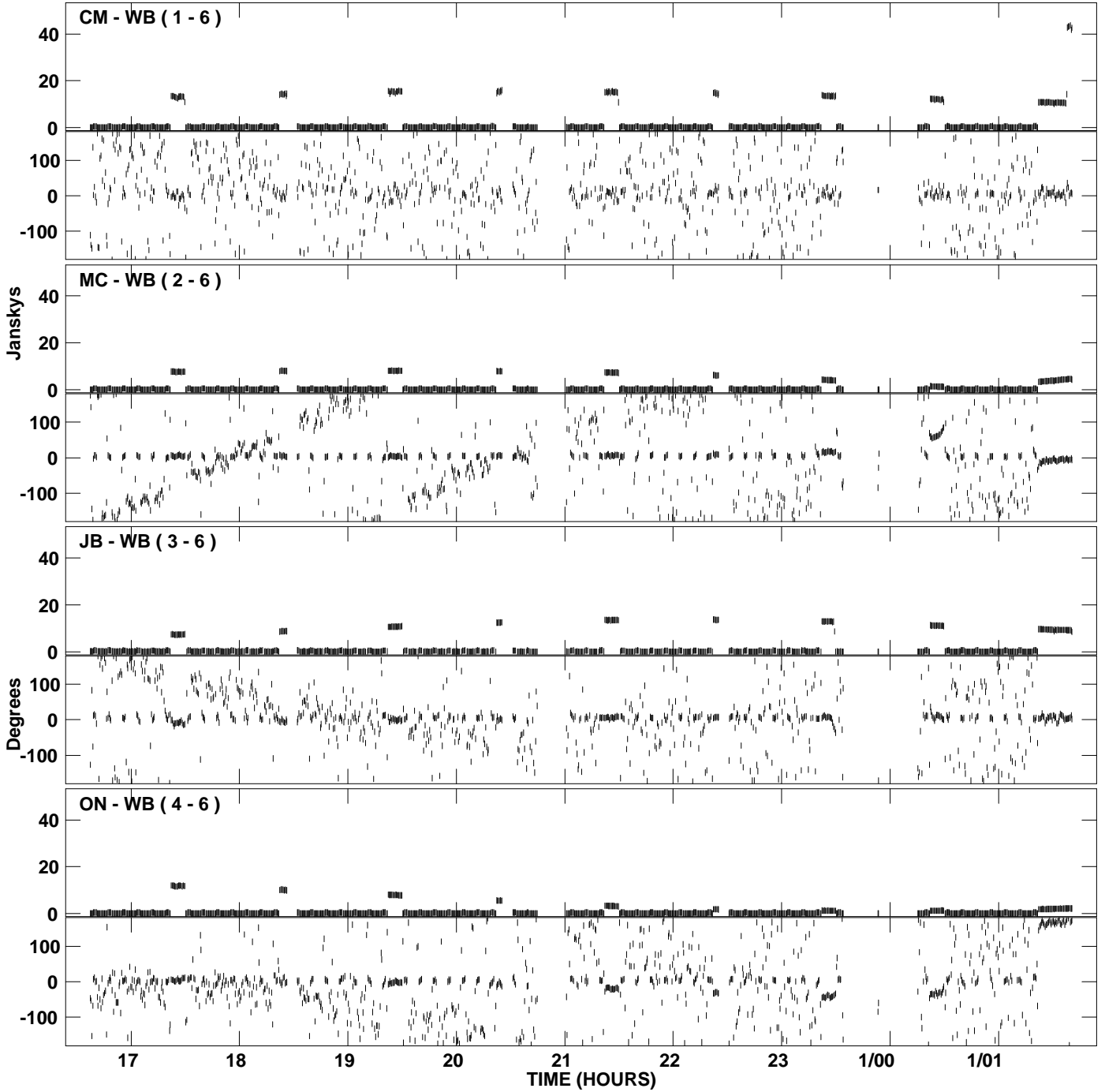
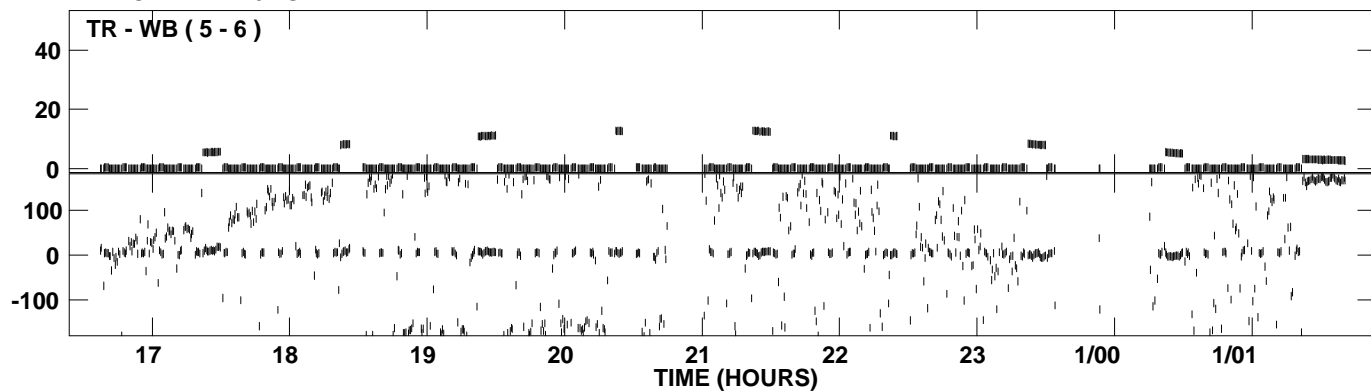


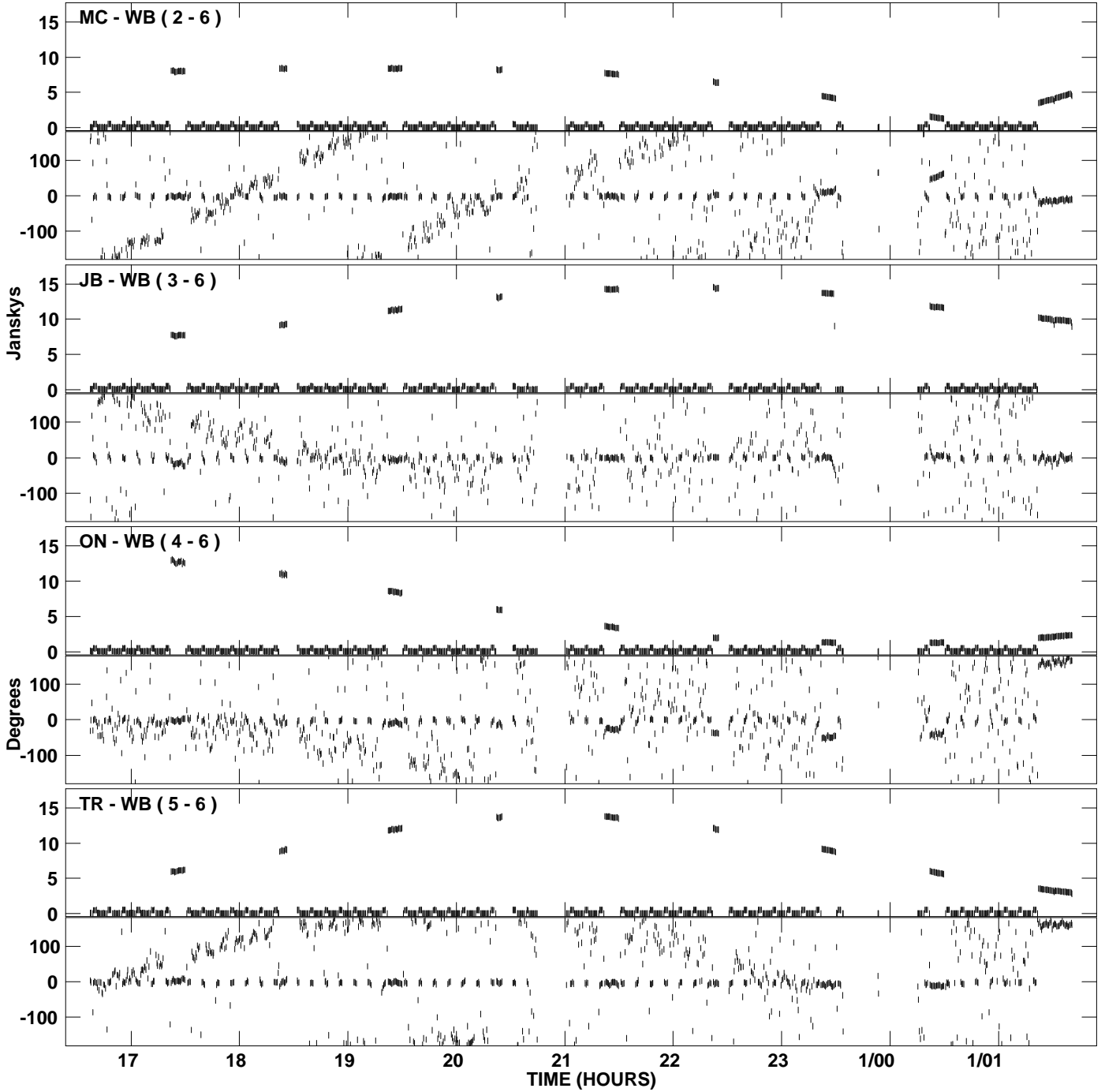
PLot file version 1 created 10-JAN-2007 13:52:26
Amplitude and Phase vs Time for RP005.UVDATA.1 Vect aver. CL # 3
IF 1 CHAN 1 - 16 STK LL



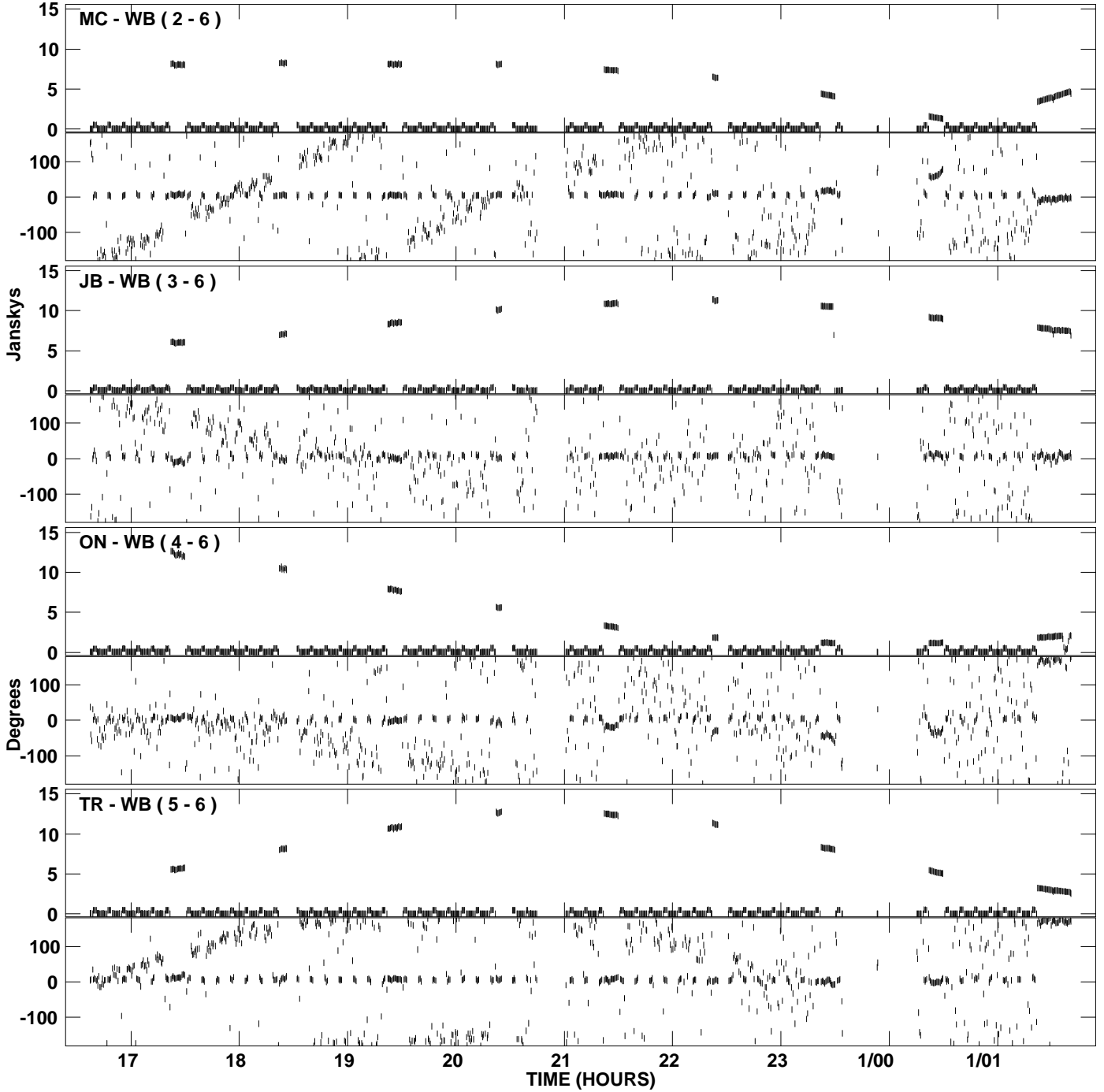
PLot file version 2 created 10-JAN-2007 13:52:26
Amplitude andPhase vs Time for RP005.UVDATA.1 Vect aver. CL # 3
IF 1 CHAN 1 - 16 STK LL



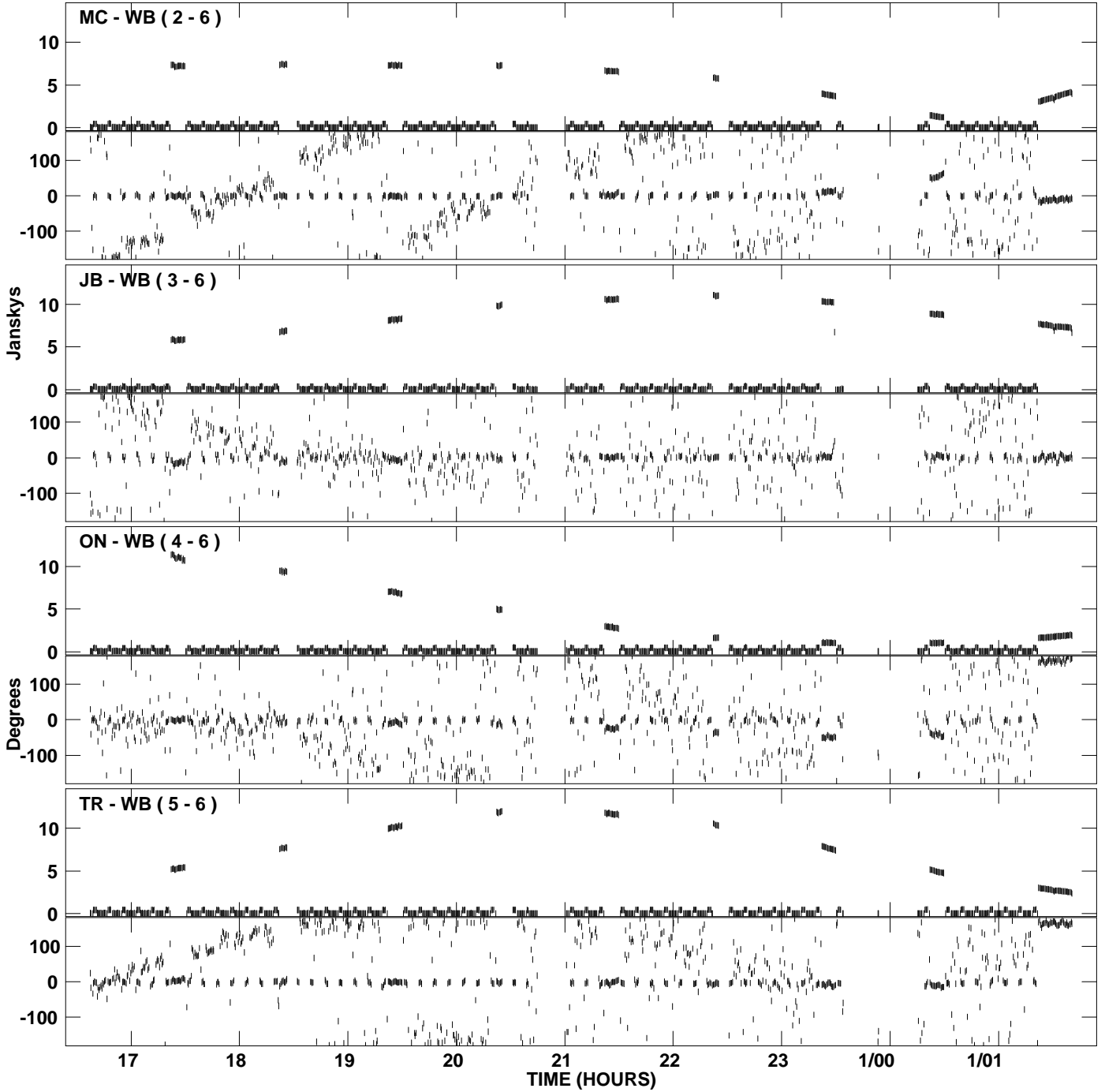
PLot file version 3 created 10-JAN-2007 13:52:38
Amplitude and Phase vs Time for RP005.UVDATA.1 Vect aver. CL # 3
IF 2 CHAN 1 - 16 STK LL



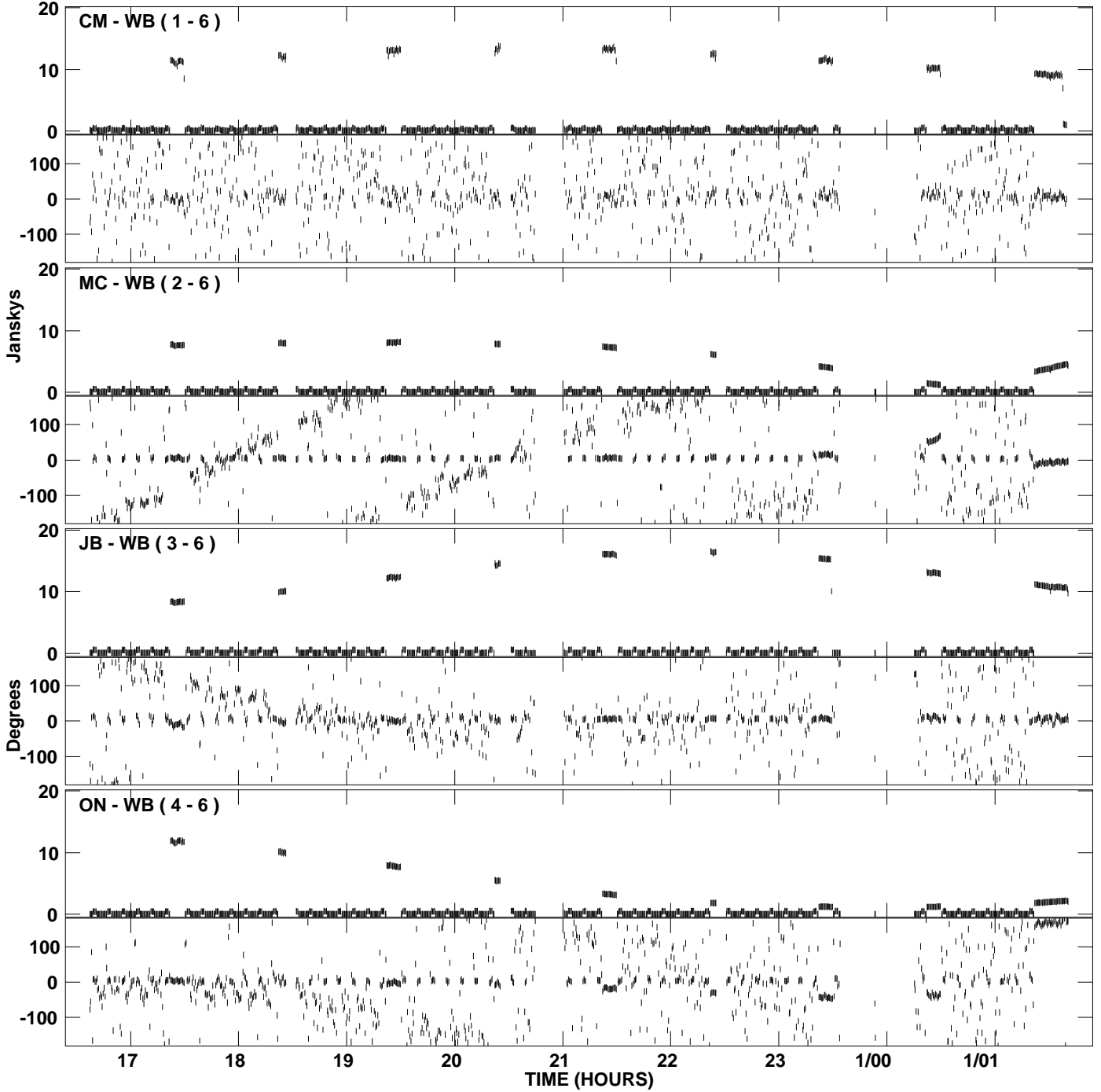
PLot file version 4 created 10-JAN-2007 13:52:49
Amplitude and Phase vs Time for RP005.UVDATA.1 Vect aver. CL # 3
IF 3 CHAN 1 - 16 STK LL



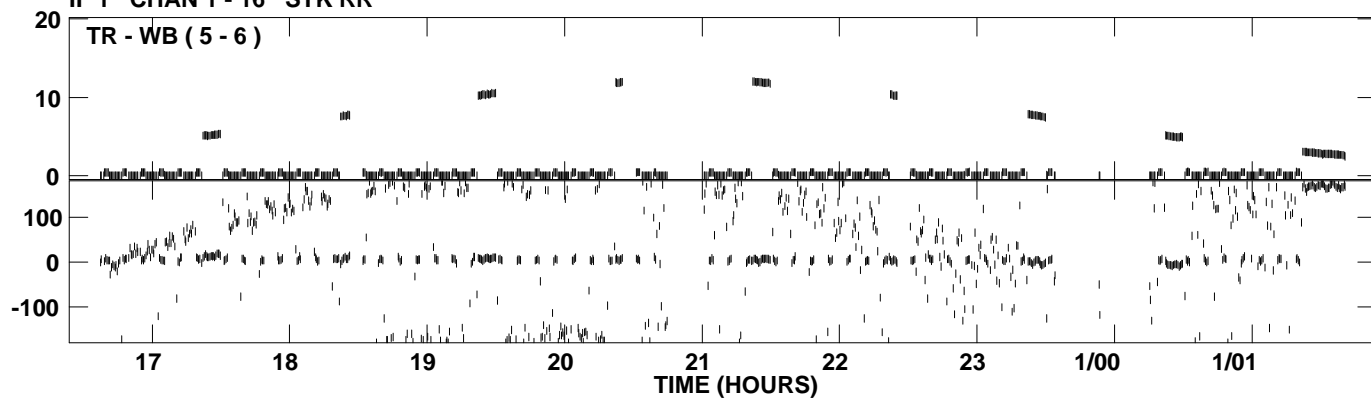
PLot file version 5 created 10-JAN-2007 13:53:00
Amplitude and Phase vs Time for RP005.UVDATA.1 Vect aver. CL # 3
IF 4 CHAN 1 - 16 STK LL



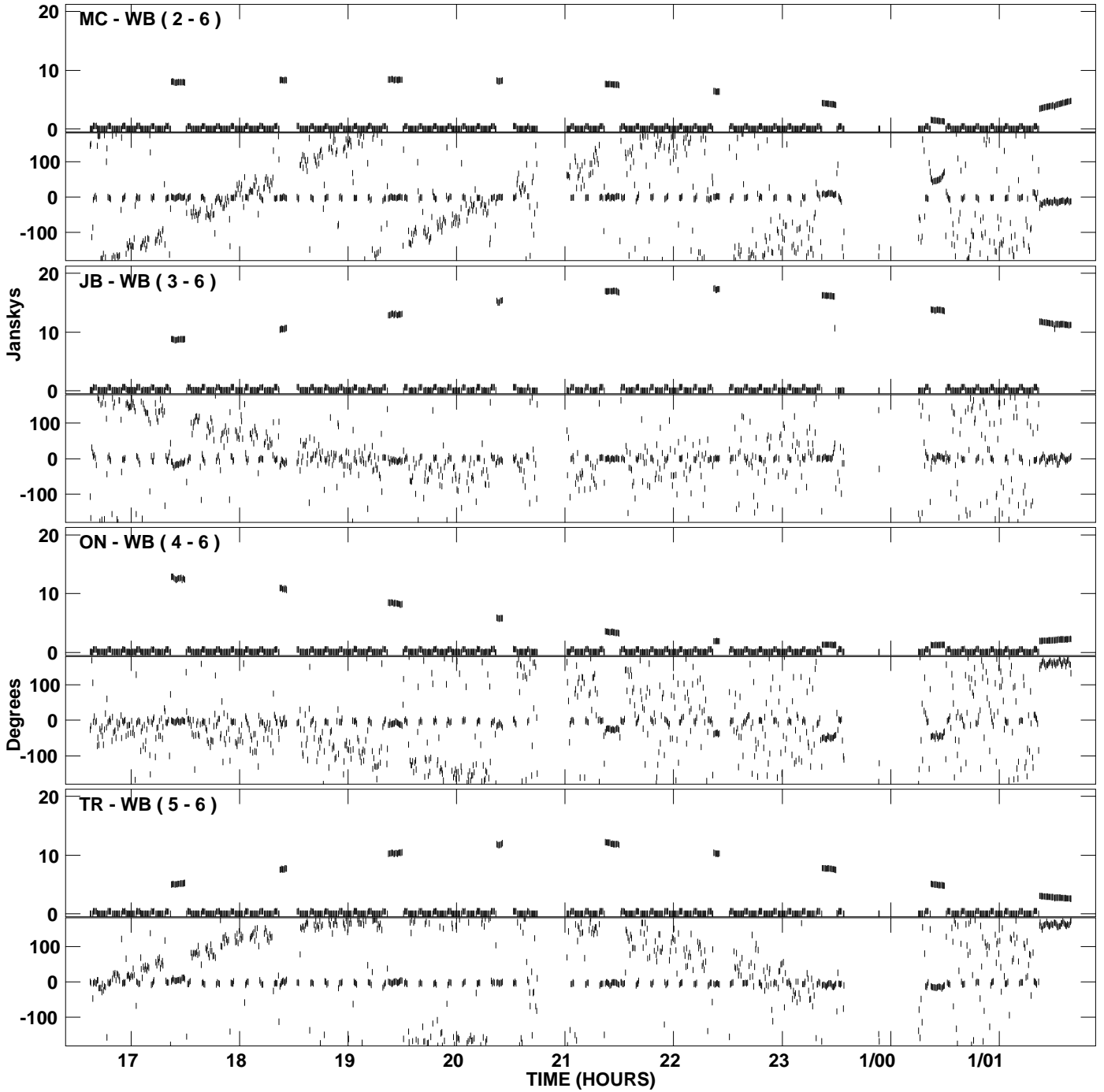
PLot file version 6 created 10-JAN-2007 13:53:12
Amplitude and Phase vs Time for RP005.UVDATA.1 Vect aver. CL # 3
IF 1 CHAN 1 - 16 STK RR



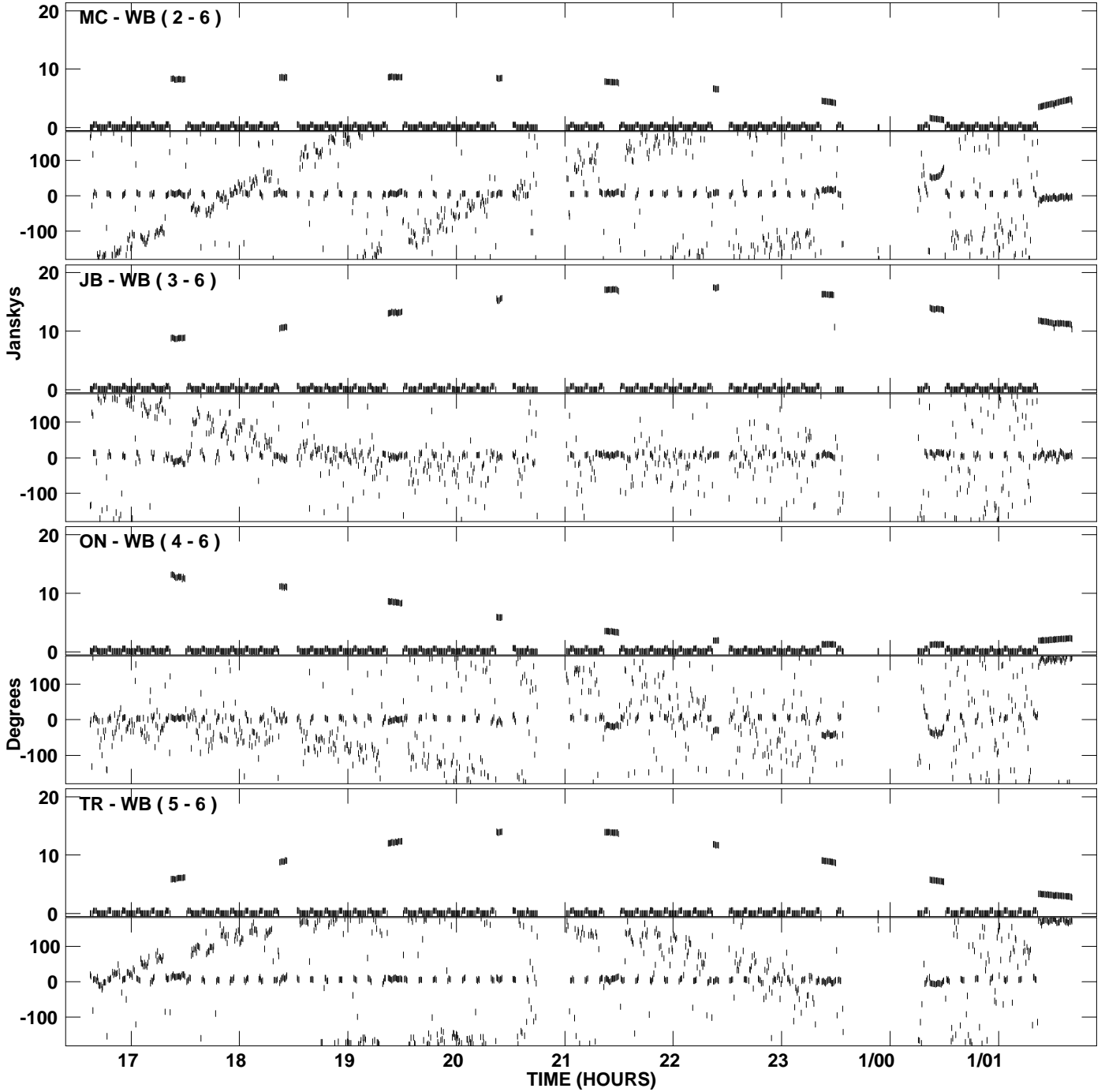
PLot file version 7 created 10-JAN-2007 13:53:12
Amplitude andPhase vs Time for RP005.UVDATA.1 Vect aver. CL # 3
IF 1 CHAN 1 - 16 STK RR



PLot file version 8 created 10-JAN-2007 13:53:22
Amplitude and Phase vs Time for RP005.UVDATA.1 Vect aver. CL # 3
IF 2 CHAN 1 - 16 STK RR



PLot file version 9 created 10-JAN-2007 13:53:31
Amplitude and Phase vs Time for RP005.UVDATA.1 Vect aver. CL # 3
IF 3 CHAN 1 - 16 STK RR



PLot file version 10 created 10-JAN-2007 13:53:41
Amplitude and Phase vs Time for RP005.UVDATA.1 Vect aver. CL # 3
IF 4 CHAN 1 - 16 STK RR

