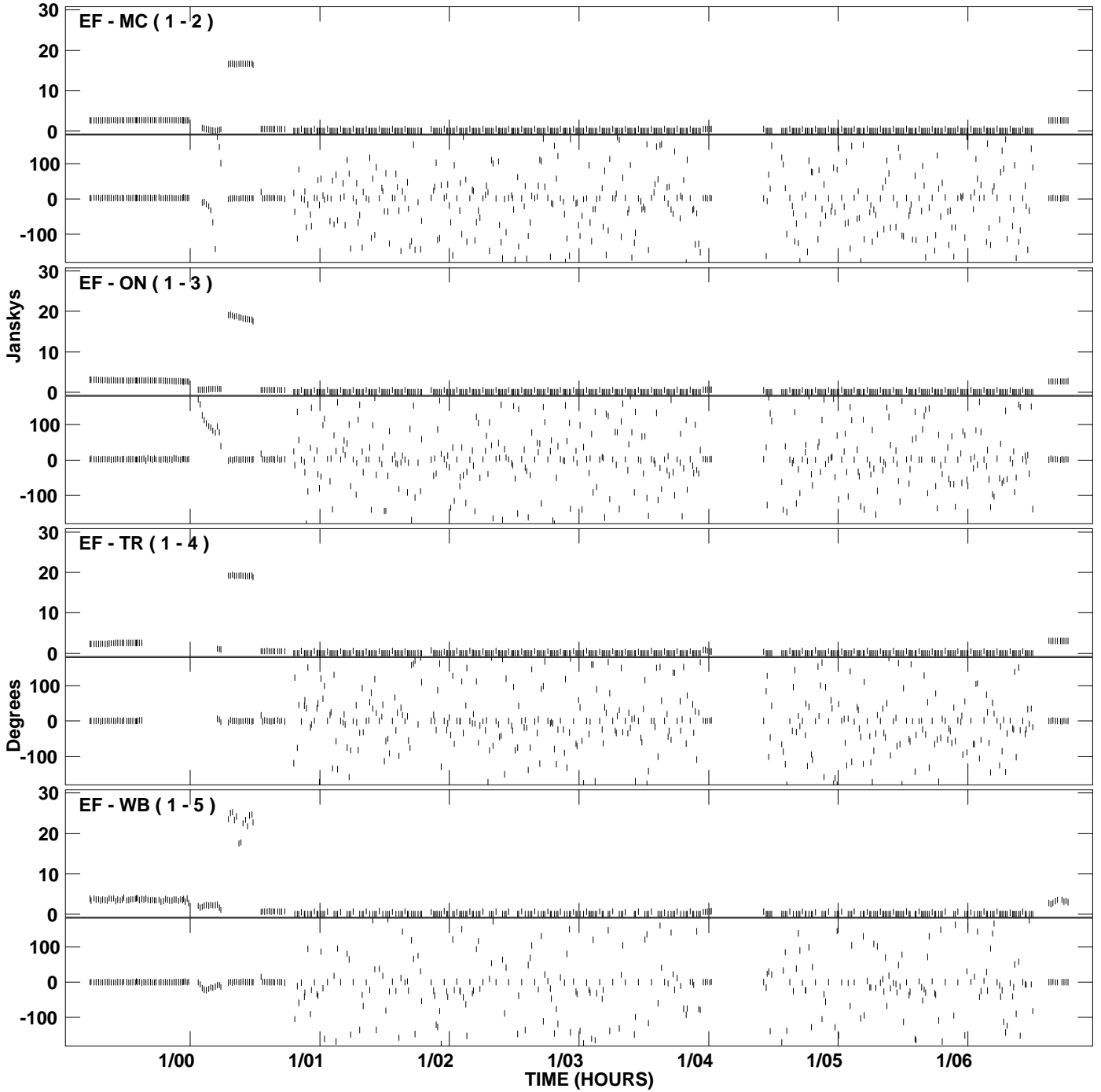
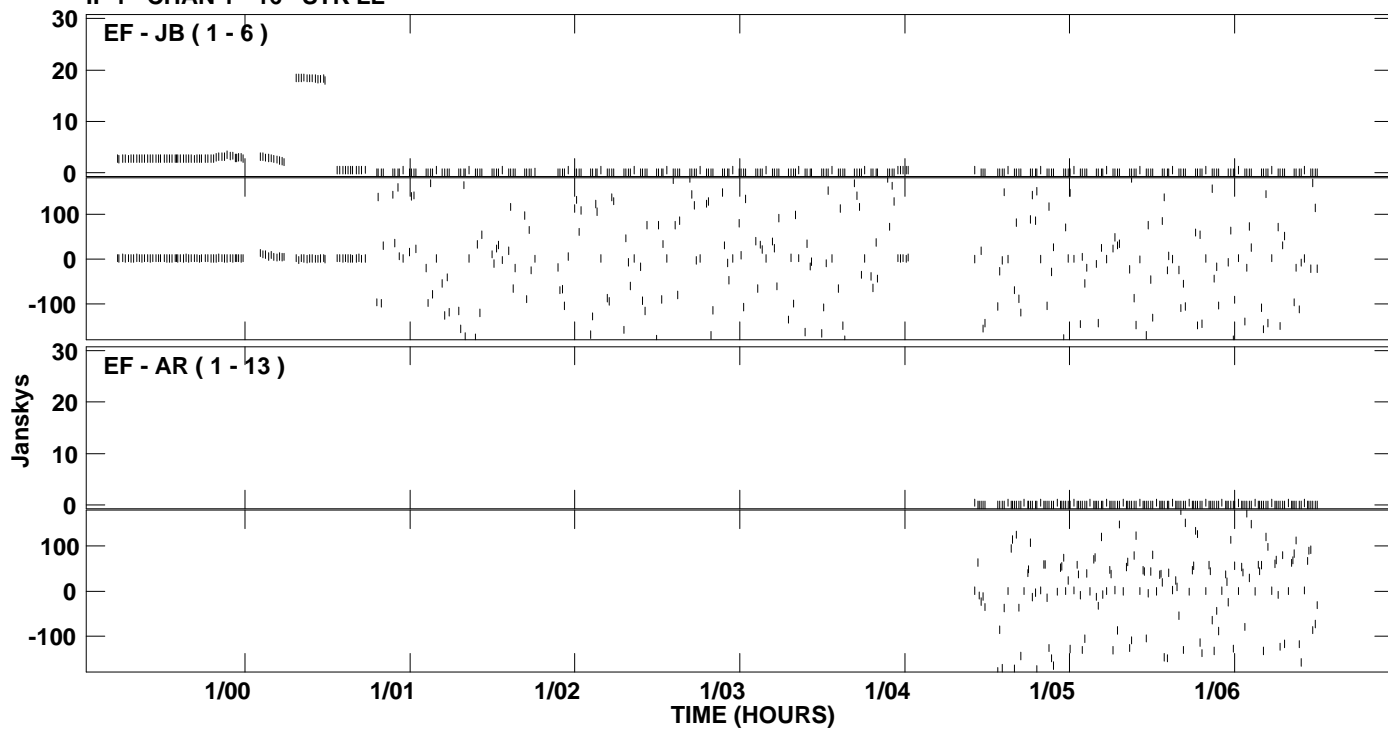


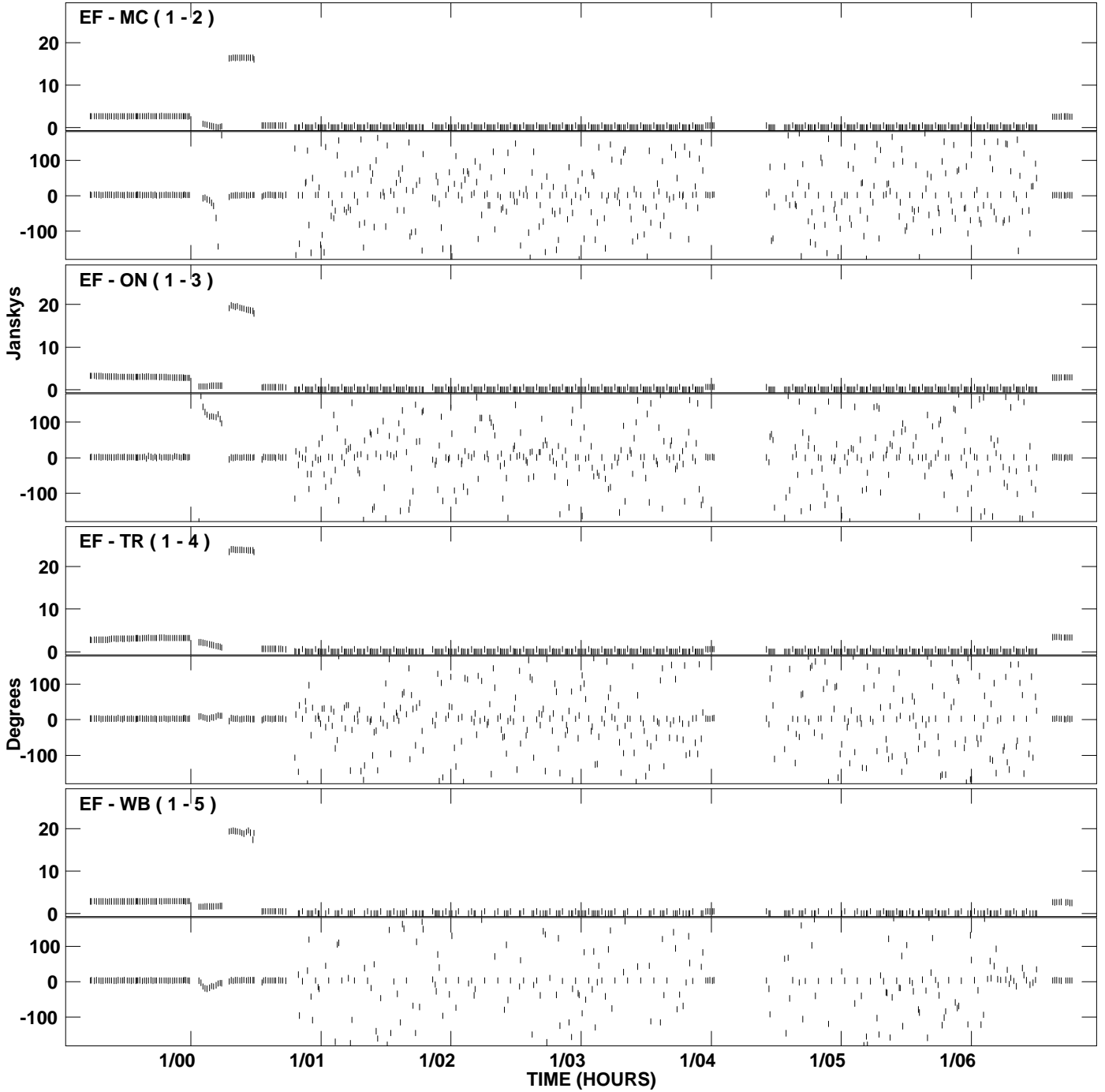
PLot file version 1 created 21-OCT-2009 21:33:05
Amplitude and Phase vs Time for RP015C.UVDATA.1 Vect aver. CL # 3
IF 1 CHAN 1 - 16 STK LL



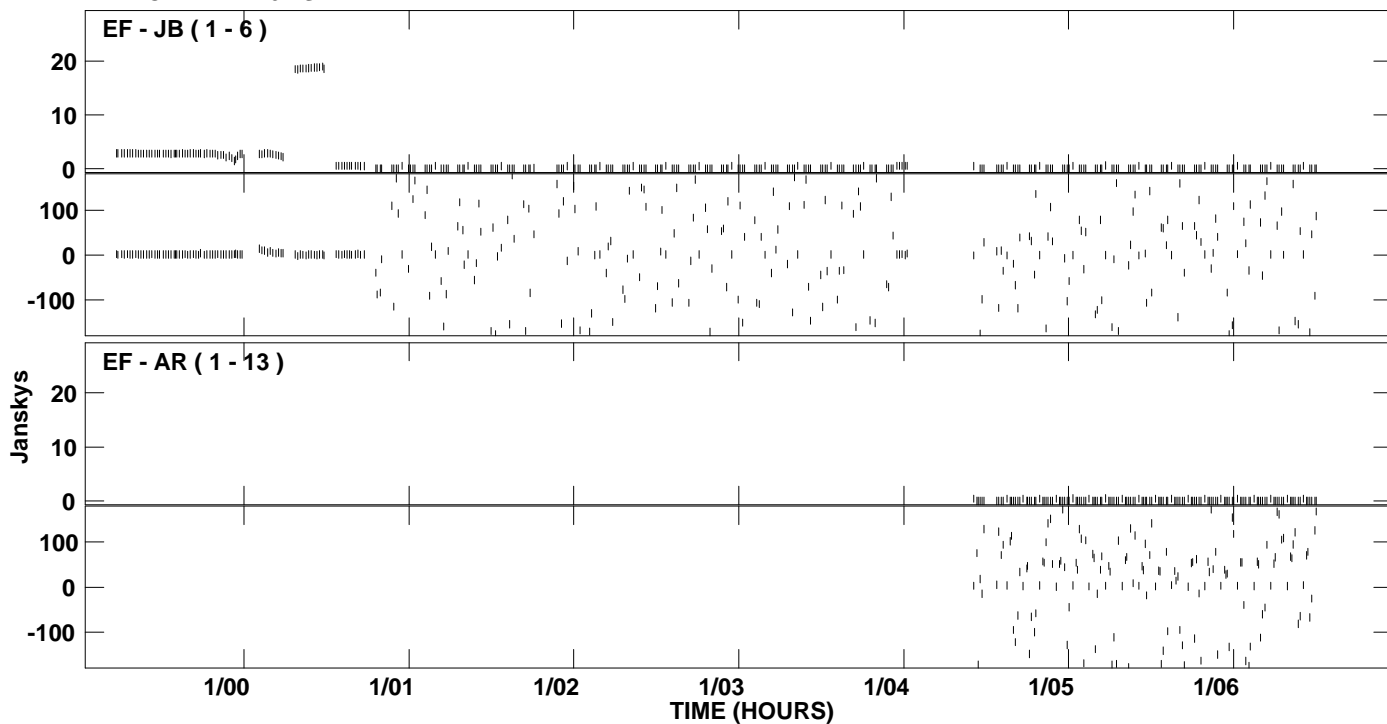
PLot file version 2 created 21-OCT-2009 21:33:05
Amplitude and Phase vs Time for RP015C.UVDATA.1 Vect aver. CL # 3
IF 1 CHAN 1 - 16 STK LL



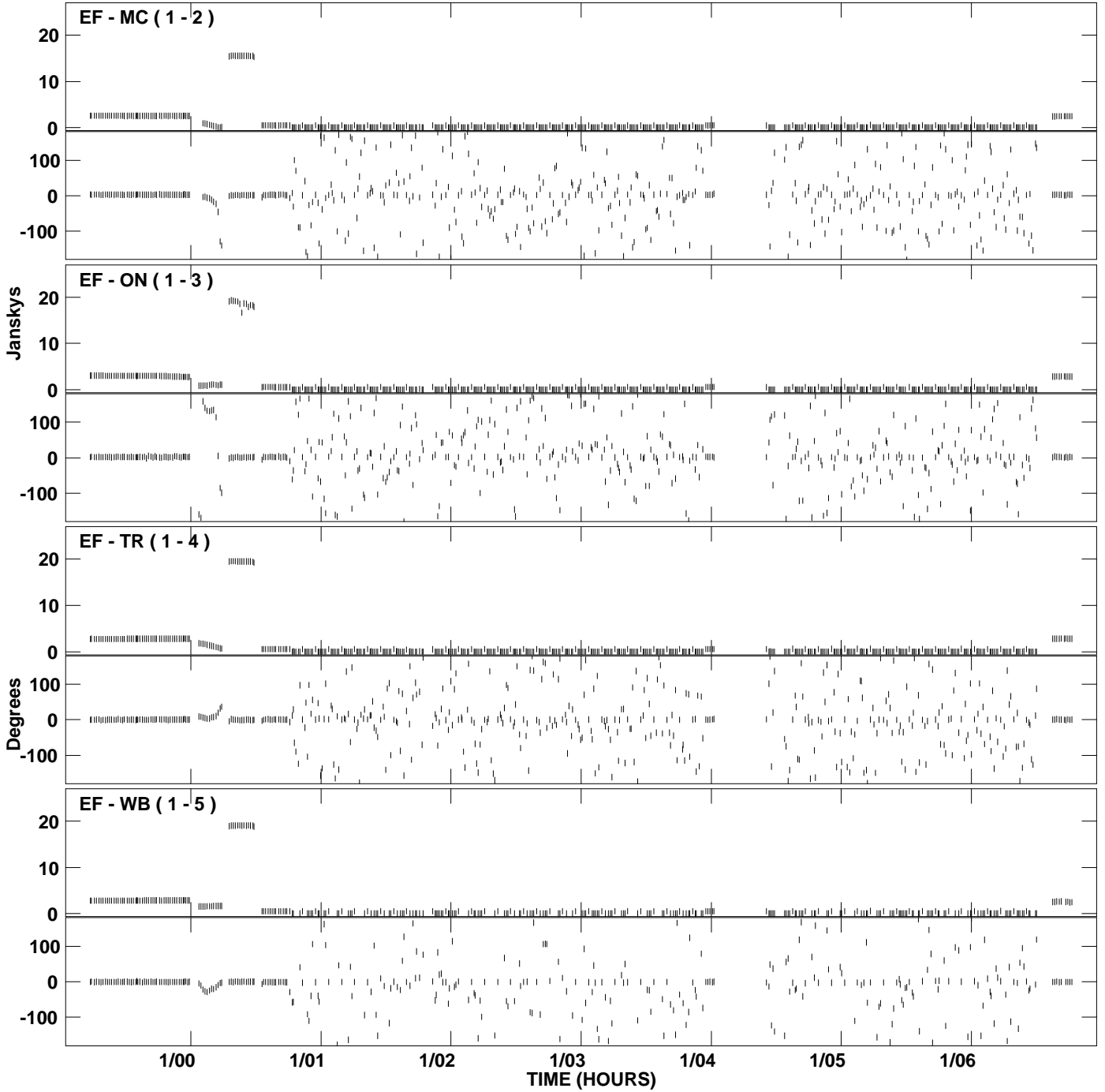
PLot file version 3 created 21-OCT-2009 21:33:20
Amplitude and Phase vs Time for RP015C.UVDATA.1 Vect aver. CL # 3
IF 2 CHAN 1 - 16 STK LL



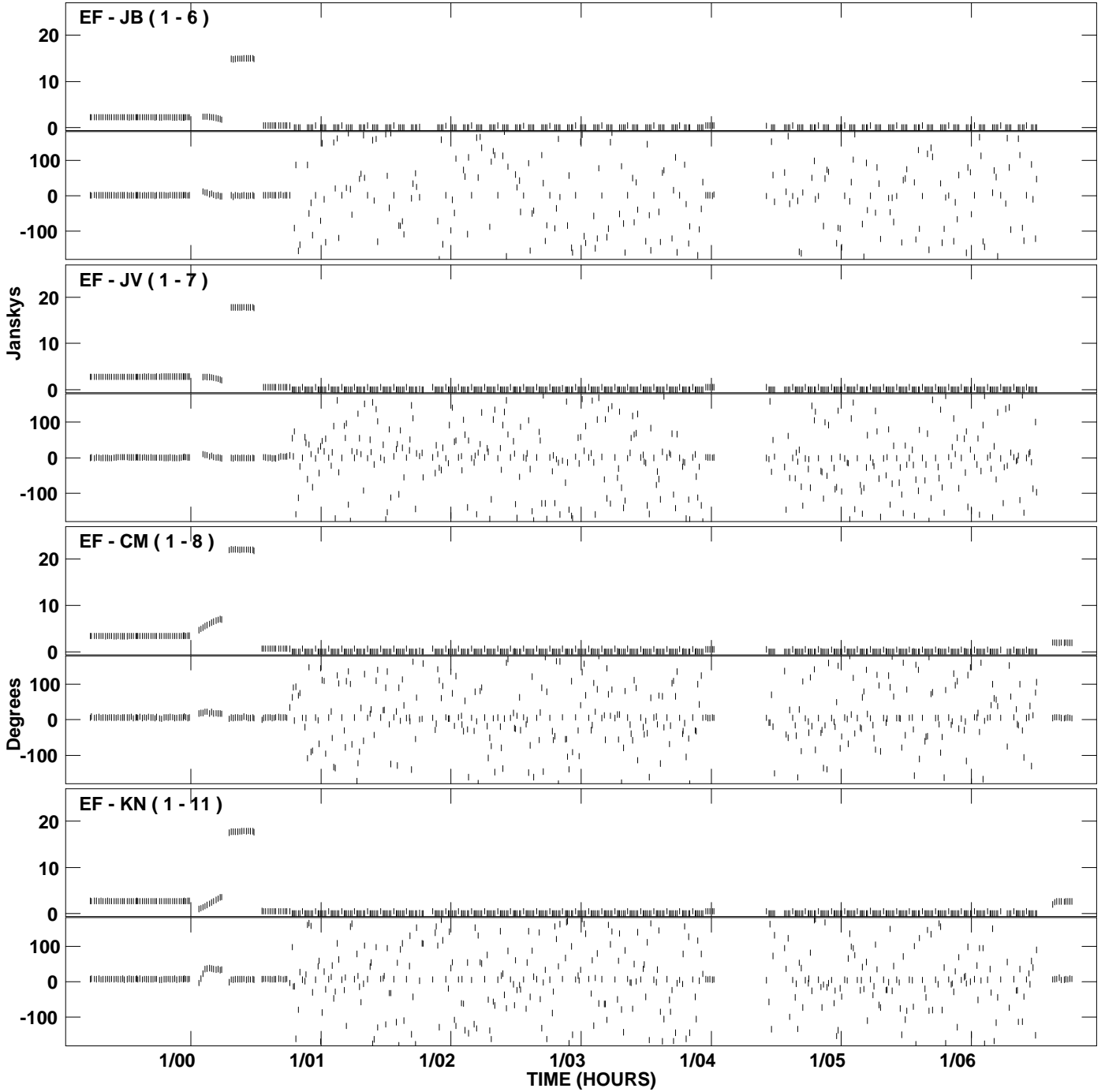
PLot file version 4 created 21-OCT-2009 21:33:20
Amplitude and Phase vs Time for RP015C.UVDATA.1 Vect aver. CL # 3
IF 2 CHAN 1 - 16 STK LL



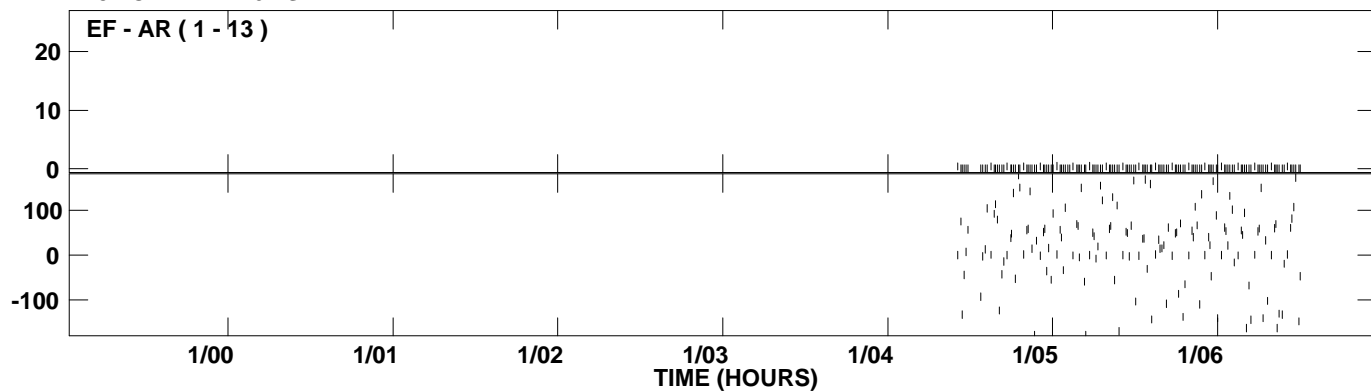
PLot file version 5 created 21-OCT-2009 21:33:39
Amplitude and Phase vs Time for RP015C.UVDATA.1 Vect aver. CL # 3
IF 3 CHAN 1 - 16 STK LL



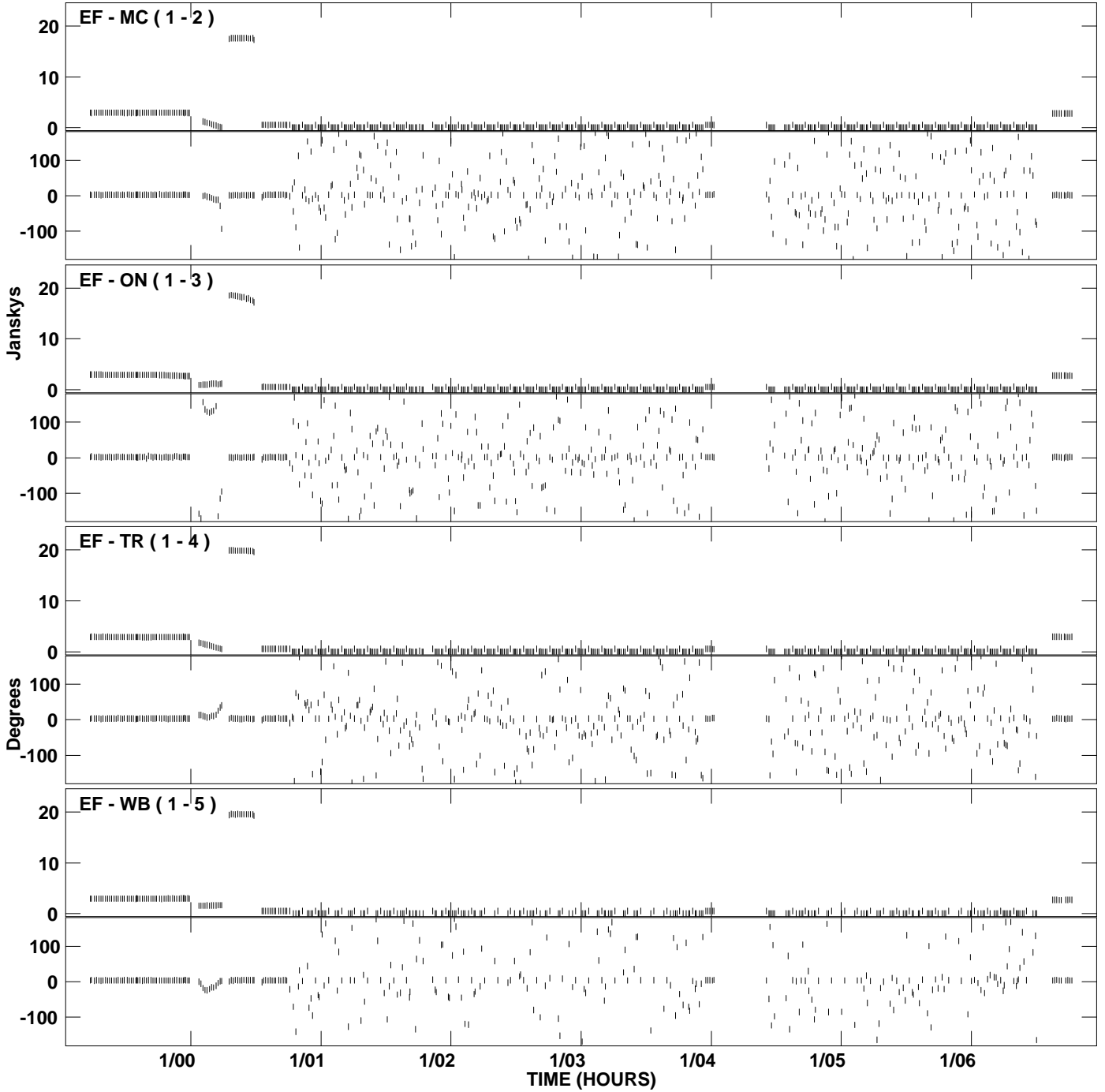
PLot file version 6 created 21-OCT-2009 21:33:39
Amplitude and Phase vs Time for RP015C.UVDATA.1 Vect aver. CL # 3
IF 3 CHAN 1 - 16 STK LL



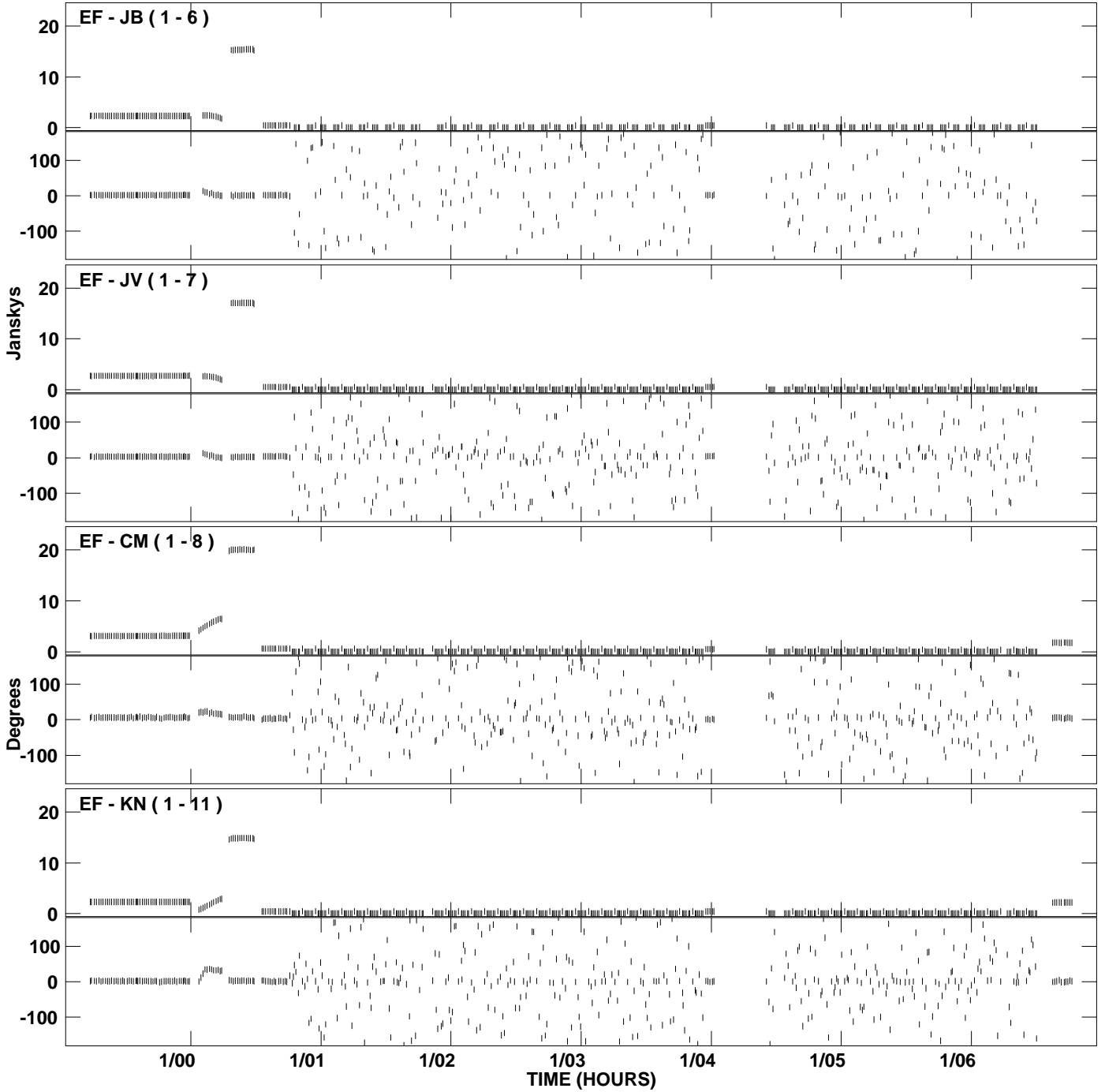
PLot file version 7 created 21-OCT-2009 21:33:39
Amplitude and Phase vs Time for RP015C.UVDATA.1 Vect aver. CL # 3
IF 3 CHAN 1 - 16 STK LL



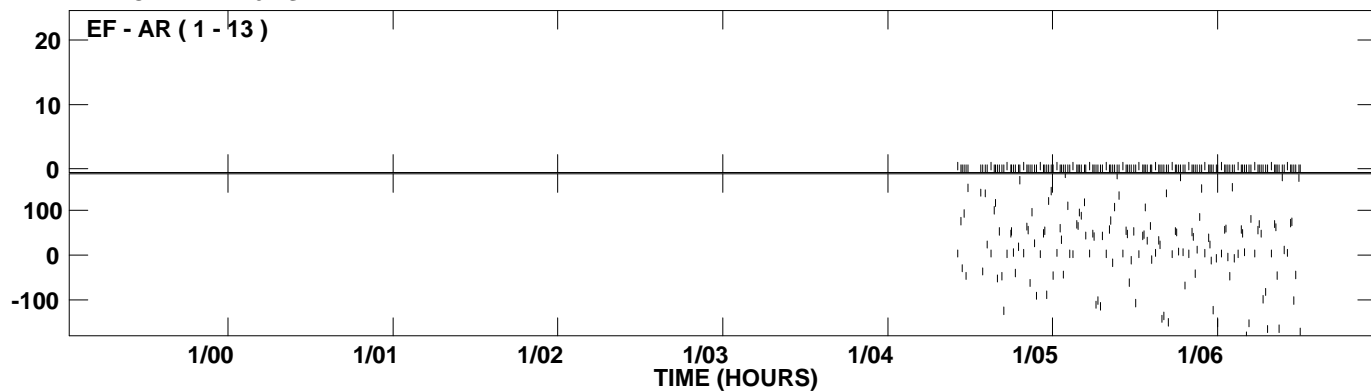
PLot file version 8 created 21-OCT-2009 21:33:57
Amplitude and Phase vs Time for RP015C.UVDATA.1 Vect aver. CL # 3
IF 4 CHAN 1 - 16 STK LL



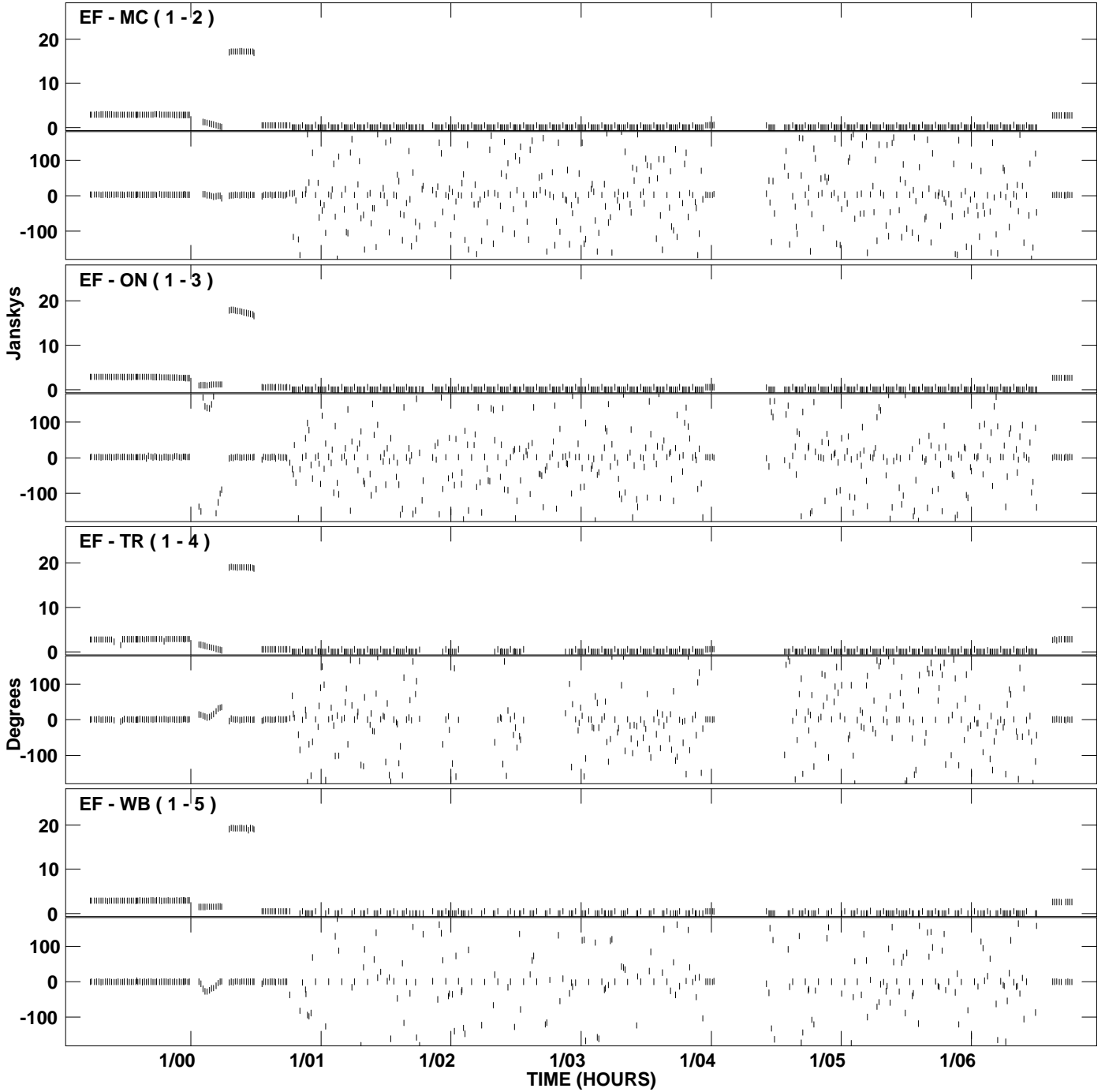
PLot file version 9 created 21-OCT-2009 21:33:57
Amplitude and Phase vs Time for RP015C.UVDATA.1 Vect aver. CL # 3
IF 4 CHAN 1 - 16 STK LL



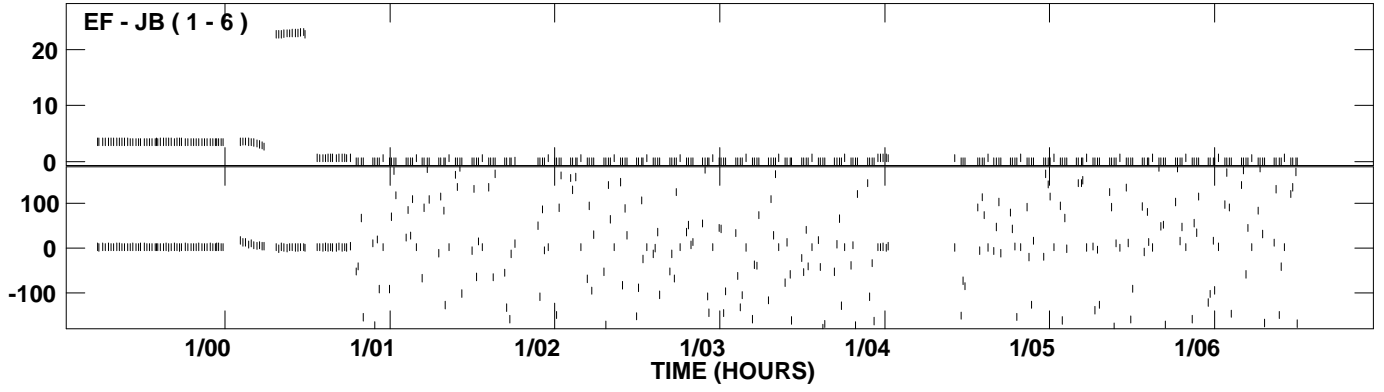
PLot file version 10 created 21-OCT-2009 21:33:57
Amplitude and Phase vs Time for RP015C.UVDATA.1 Vect aver. CL # 3
IF 4 CHAN 1 - 16 STK LL



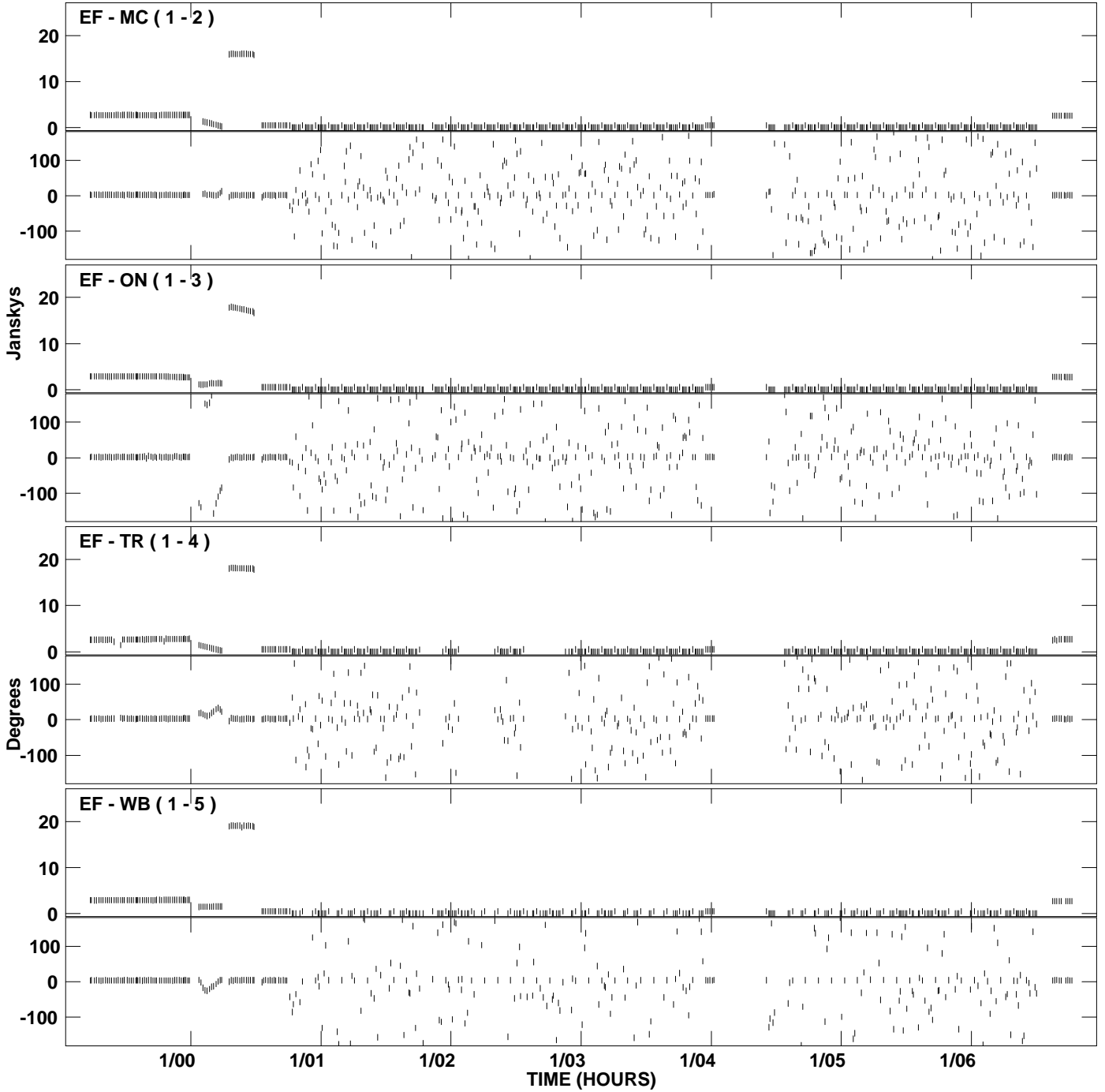
PLot file version 11 created 21-OCT-2009 21:34:12
Amplitude and Phase vs Time for RP015C.UVDATA.1 Vect aver. CL # 3
IF 5 CHAN 1 - 16 STK LL



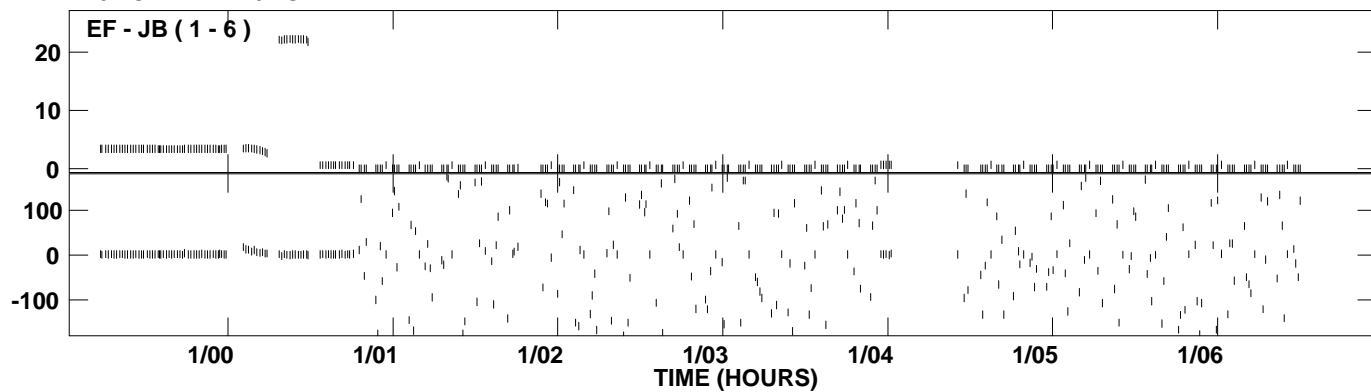
PLot file version 12 created 21-OCT-2009 21:34:12
Amplitude andPhase vs Time for RP015C.UVDATA.1 Vect aver. CL # 3
IF 5 CHAN 1 - 16 STK LL



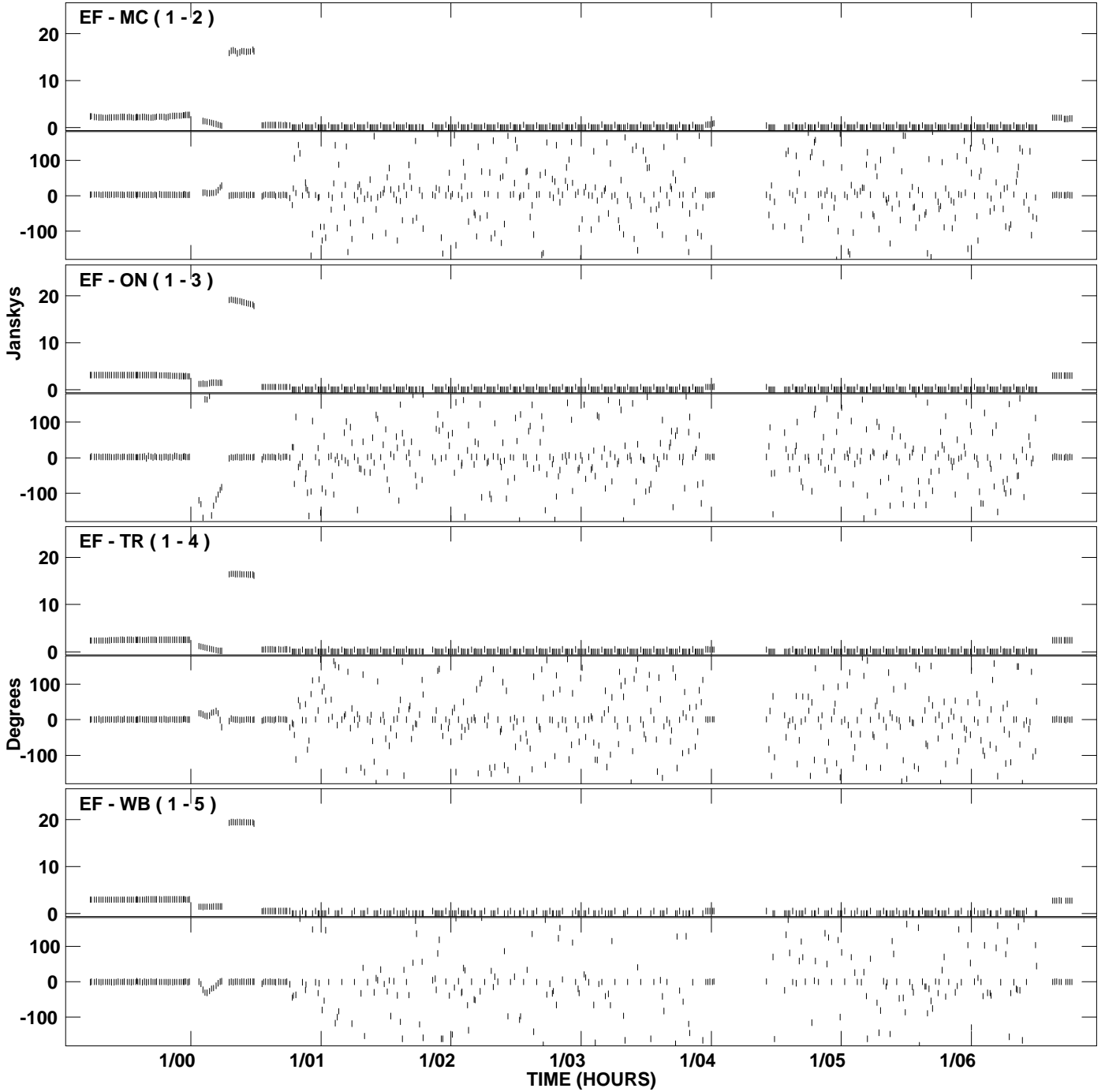
PLot file version 13 created 21-OCT-2009 21:34:27
Amplitude and Phase vs Time for RP015C.UVDATA.1 Vect aver. CL # 3
IF 6 CHAN 1 - 16 STK LL



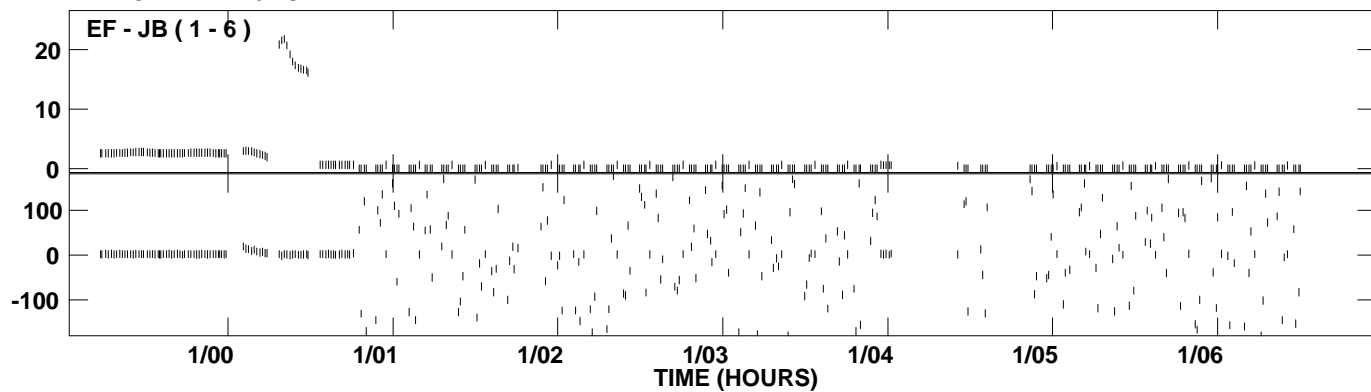
PLot file version 14 created 21-OCT-2009 21:34:27
Amplitude andPhase vs Time for RP015C.UVDATA.1 Vect aver. CL # 3
IF 6 CHAN 1 - 16 STK LL



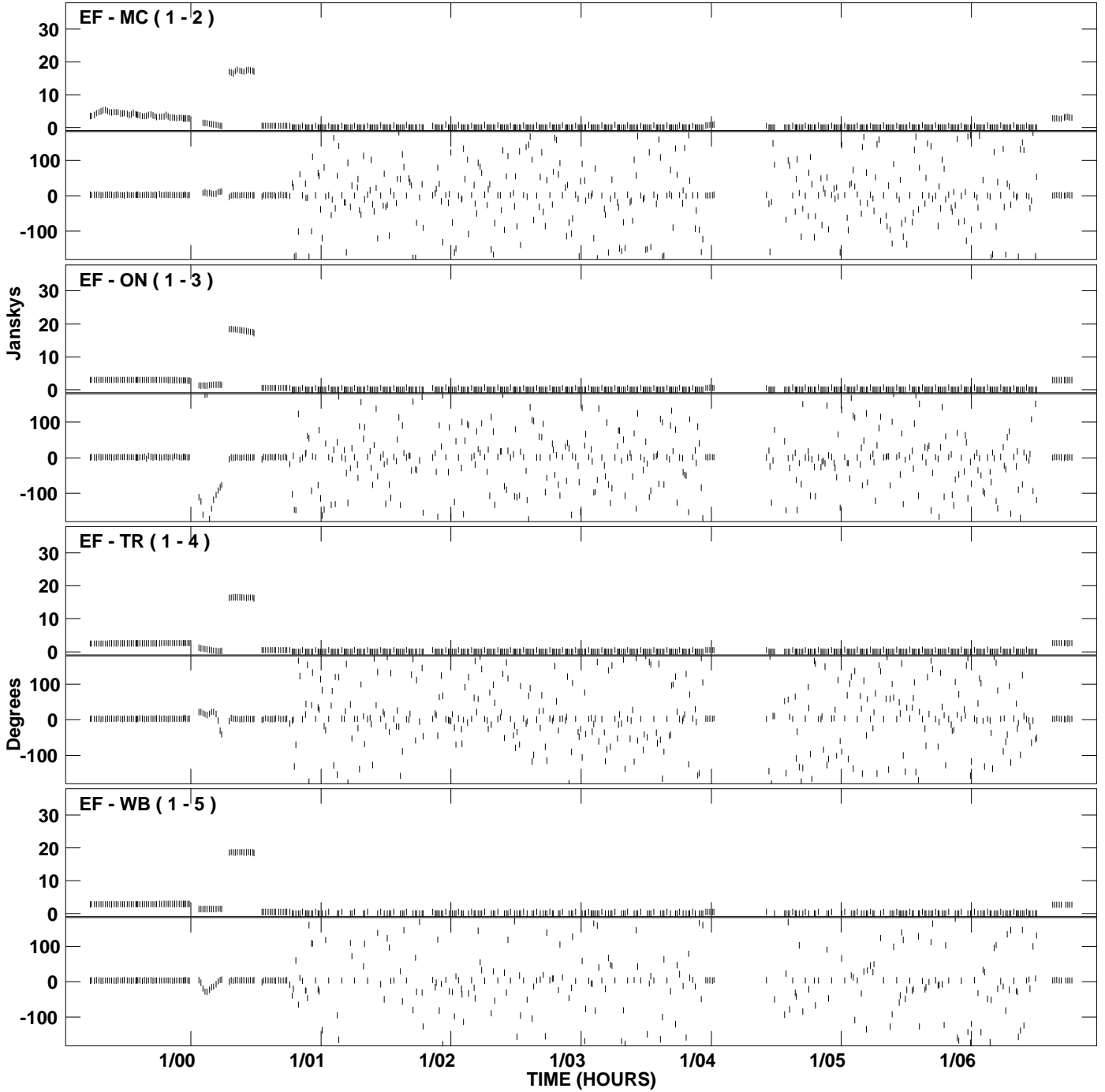
PLot file version 15 created 21-OCT-2009 21:34:42
Amplitude and Phase vs Time for RP015C.UVDATA.1 Vect aver. CL # 3
IF 7 CHAN 1 - 16 STK LL



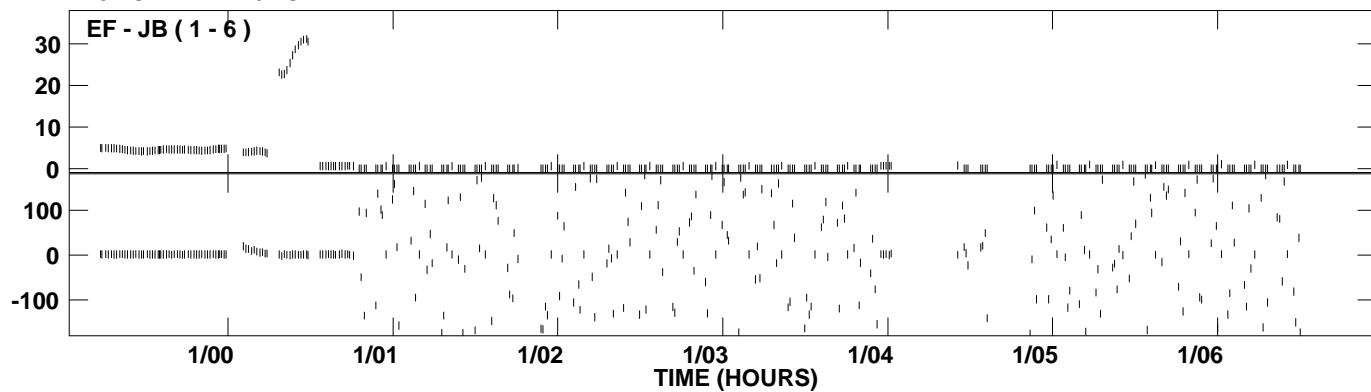
PLot file version 16 created 21-OCT-2009 21:34:42
Amplitude and Phase vs Time for RP015C.UVDATA.1 Vect aver. CL # 3
IF 7 CHAN 1 - 16 STK LL



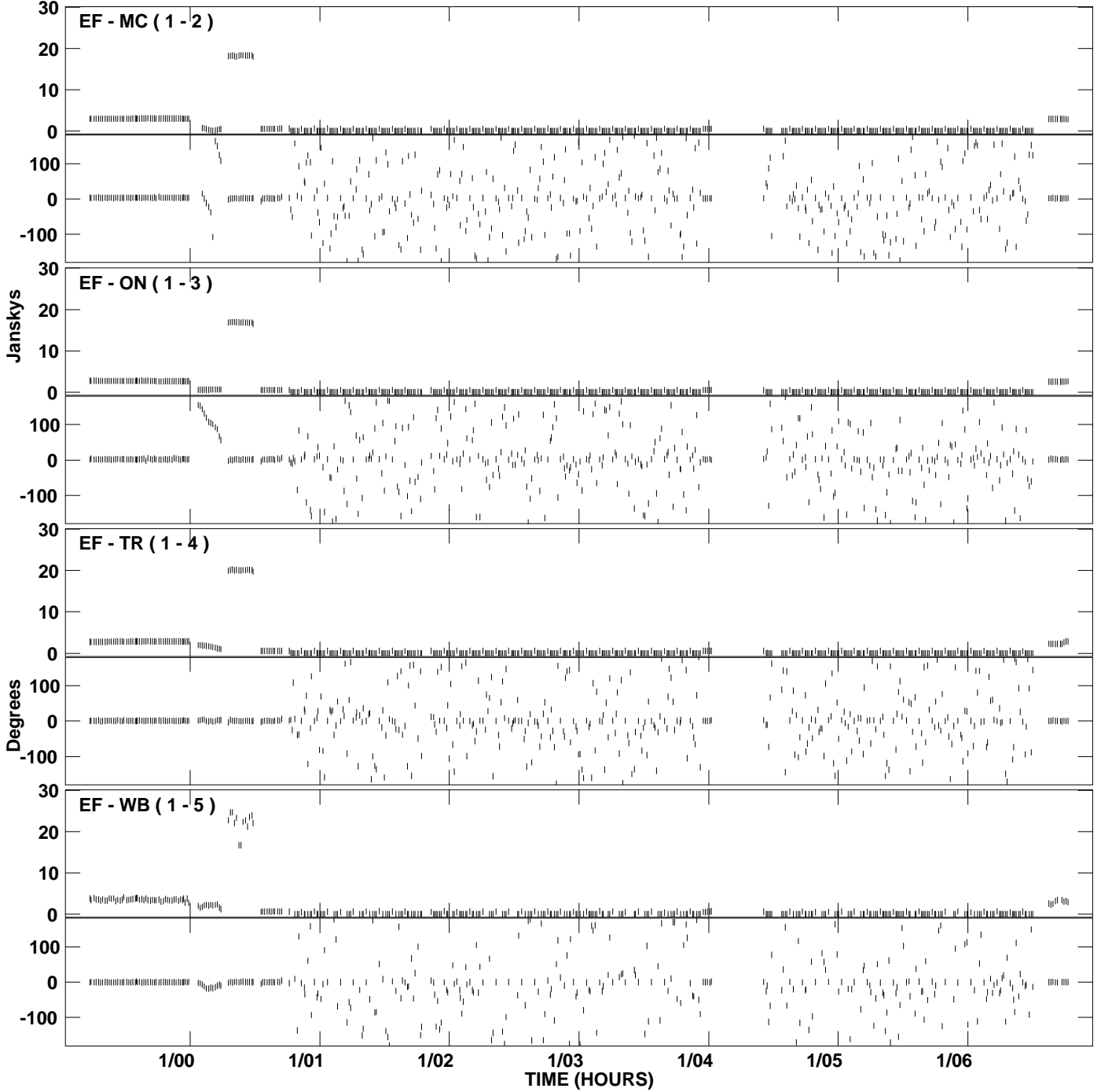
PLot file version 17 created 21-OCT-2009 21:34:57
Amplitude and Phase vs Time for RP015C.UVDATA.1 Vect aver. CL # 3
IF 8 CHAN 1 - 16 STK LL



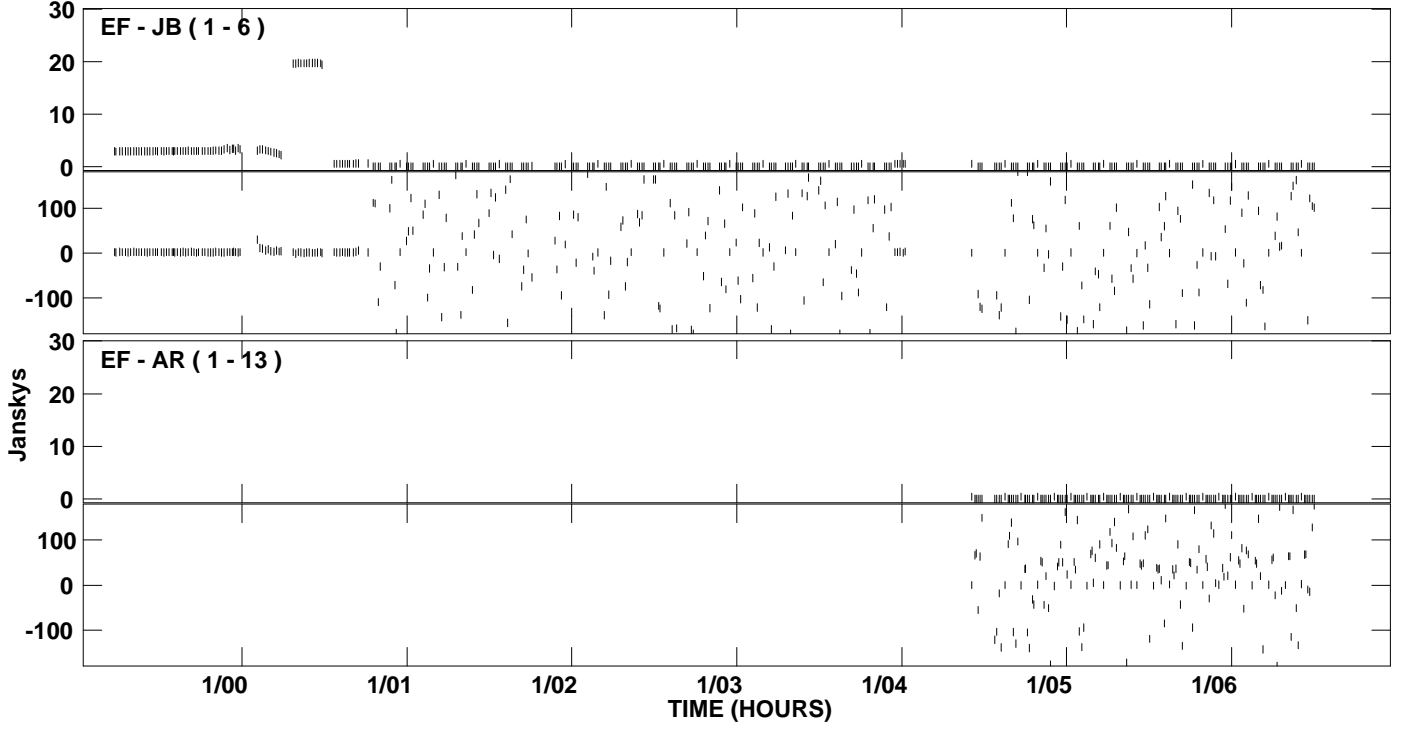
PLot file version 18 created 21-OCT-2009 21:34:57
Amplitude andPhase vs Time for RP015C.UVDATA.1 Vect aver. CL # 3
IF 8 CHAN 1 - 16 STK LL



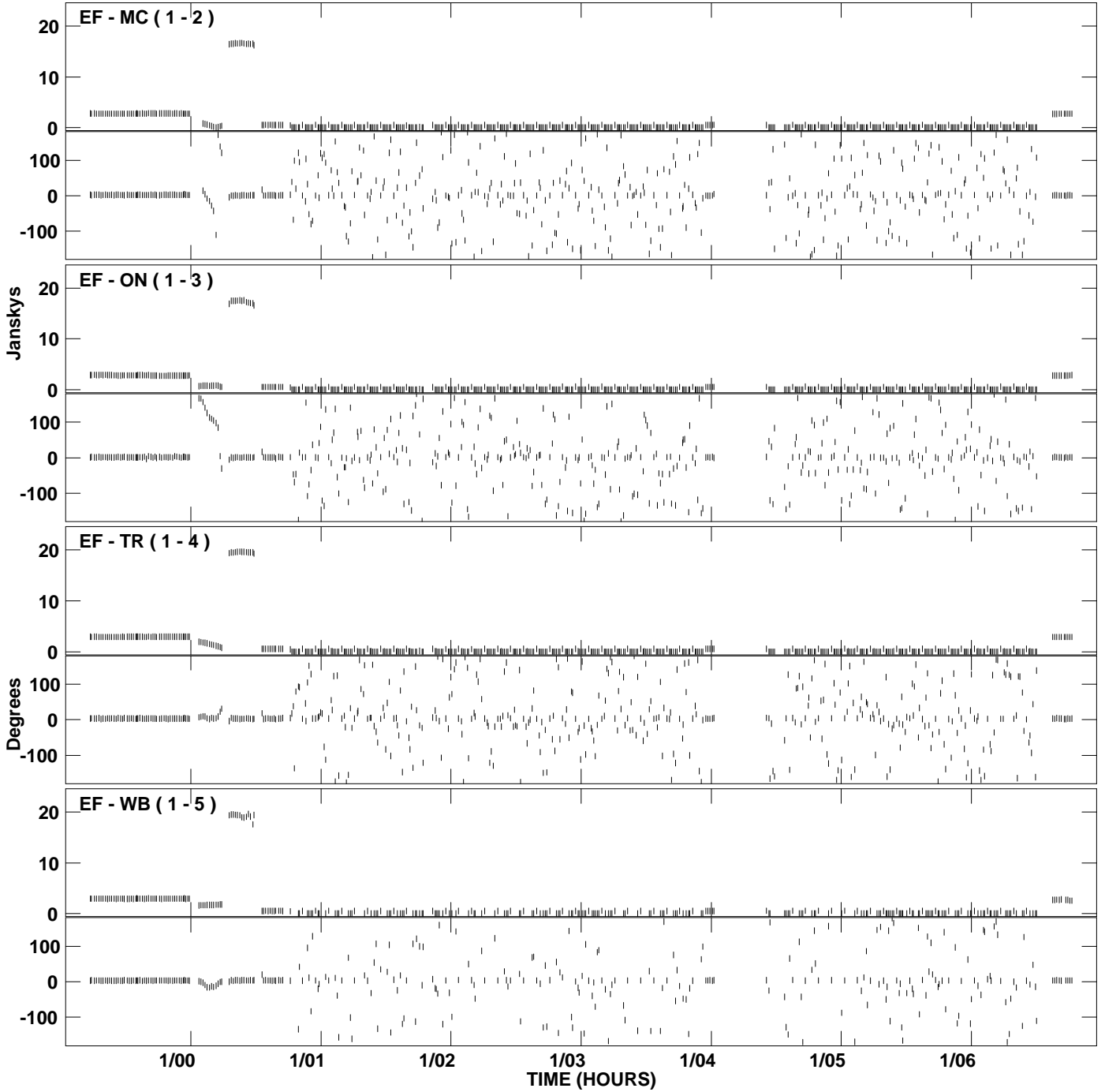
PLot file version 19 created 21-OCT-2009 21:35:10
Amplitude and Phase vs Time for RP015C.UVDATA.1 Vect aver. CL # 3
IF 1 CHAN 1 - 16 STK RR



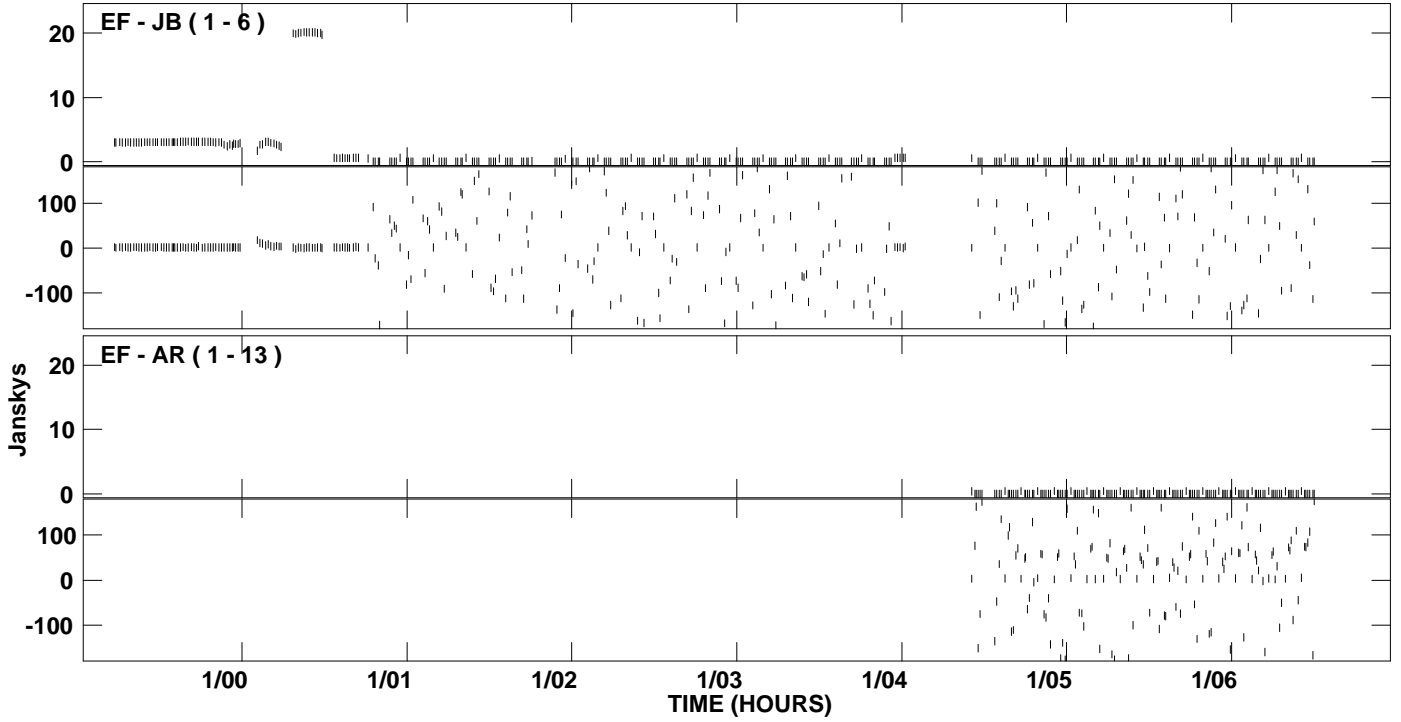
PLot file version 20 created 21-OCT-2009 21:35:10
Amplitude and Phase vs Time for RP015C.UVDATA.1 Vect aver. CL # 3
IF 1 CHAN 1 - 16 STK RR



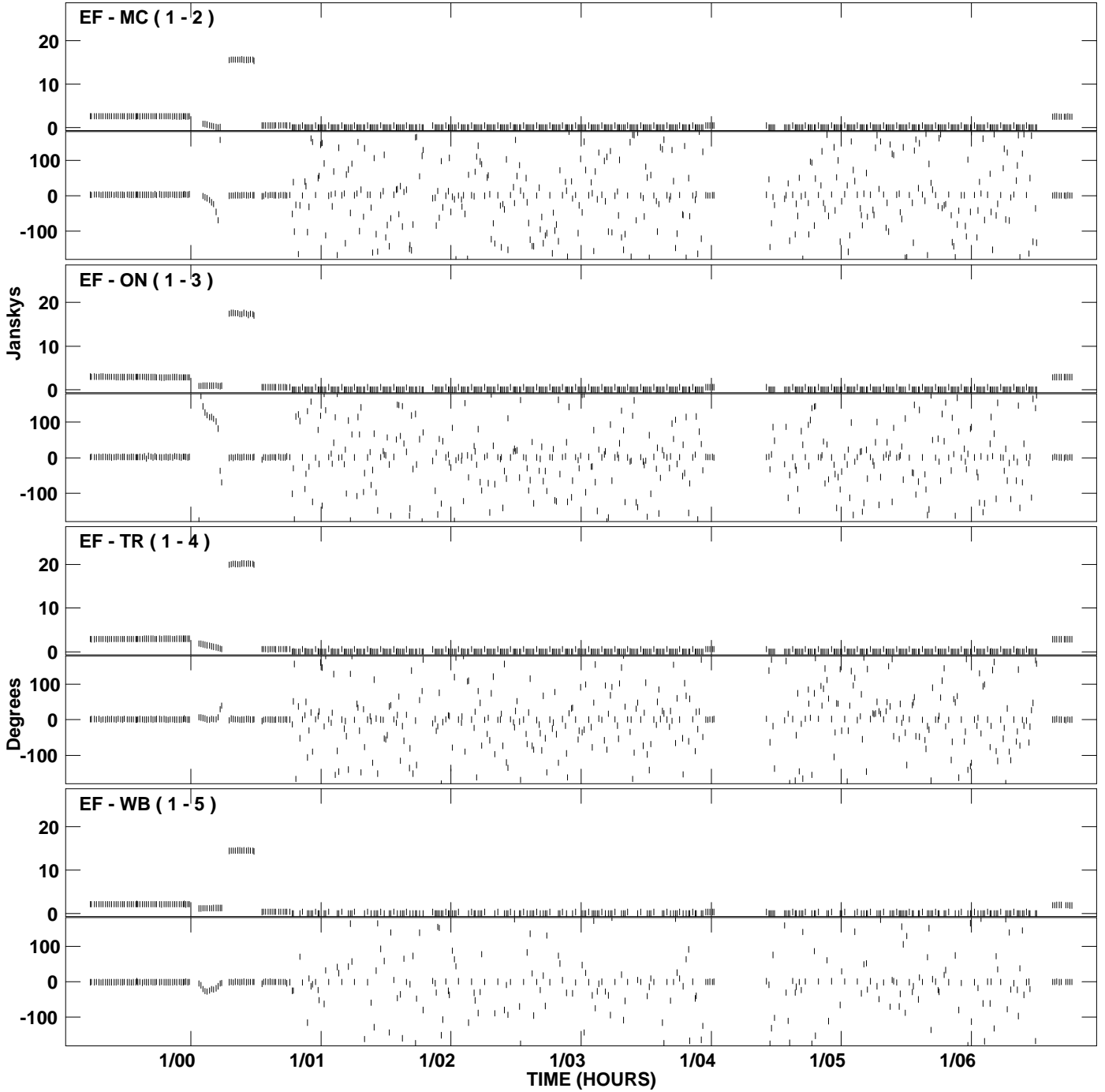
PLot file version 21 created 21-OCT-2009 21:35:24
Amplitude and Phase vs Time for RP015C.UVDATA.1 Vect aver. CL # 3
IF 2 CHAN 1 - 16 STK RR



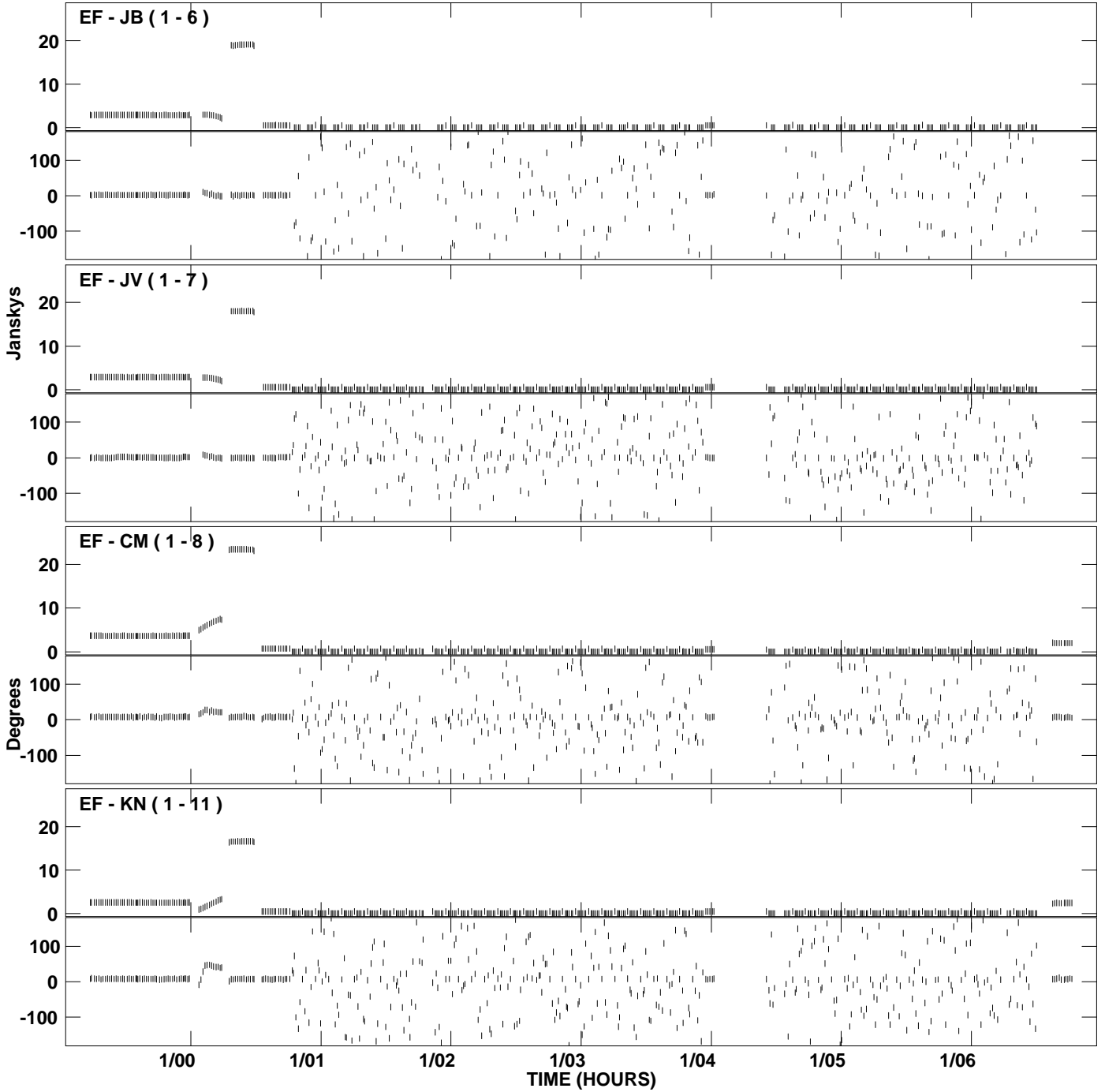
PLot file version 22 created 21-OCT-2009 21:35:24
Amplitude and Phase vs Time for RP015C.UVDATA.1 Vect aver. CL # 3
IF 2 CHAN 1 - 16 STK RR



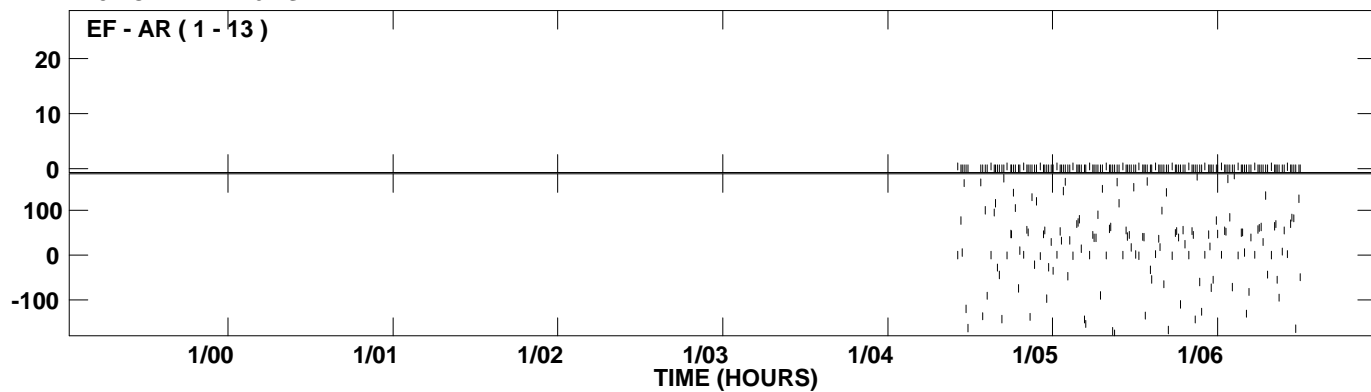
PLot file version 23 created 21-OCT-2009 21:35:40
Amplitude and Phase vs Time for RP015C.UVDATA.1 Vect aver. CL # 3
IF 3 CHAN 1 - 16 STK RR



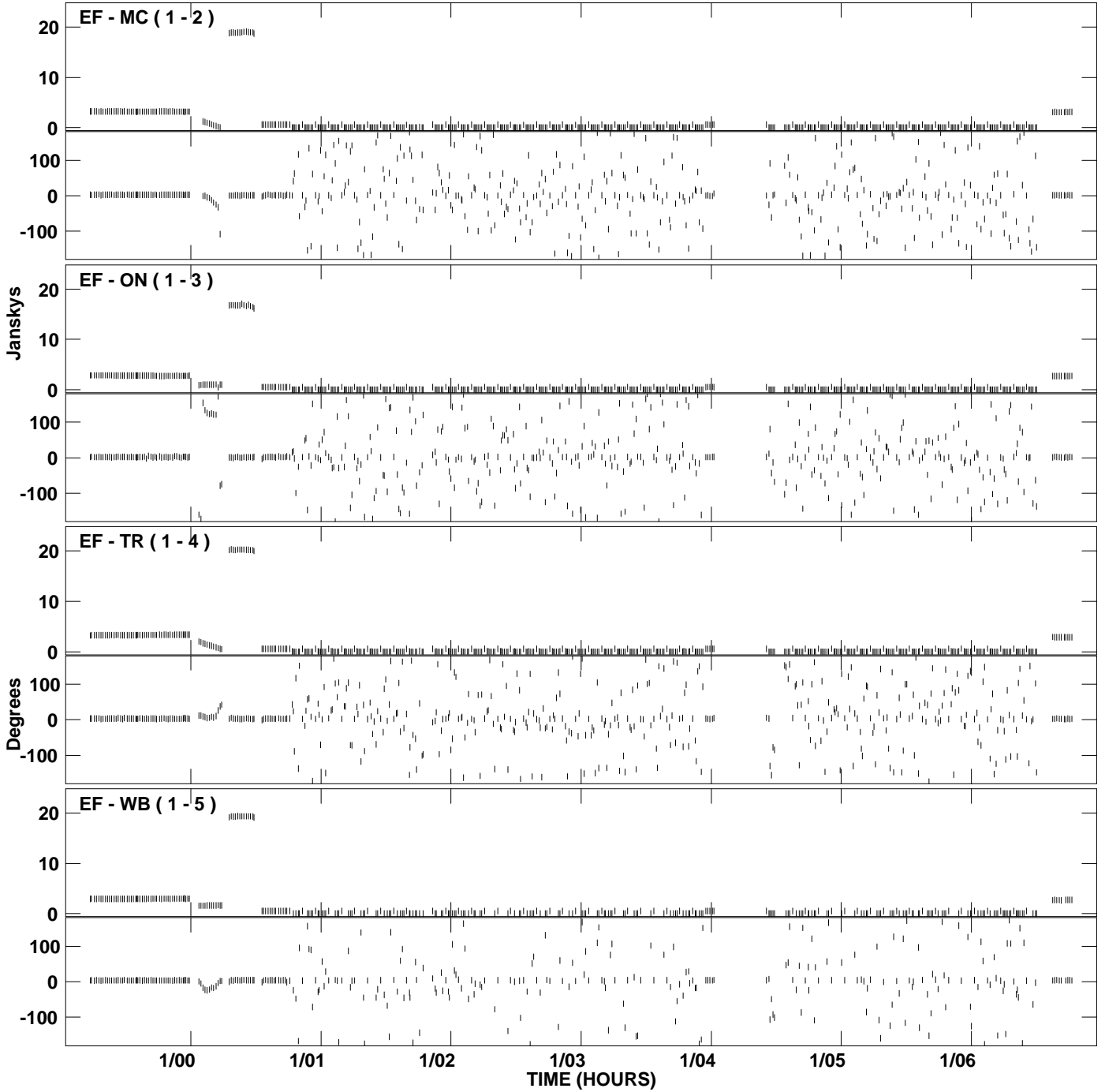
PLot file version 24 created 21-OCT-2009 21:35:40
Amplitude andPhase vs Time for RP015C.UVDATA.1 Vect aver. CL # 3
IF 3 CHAN 1 - 16 STK RR



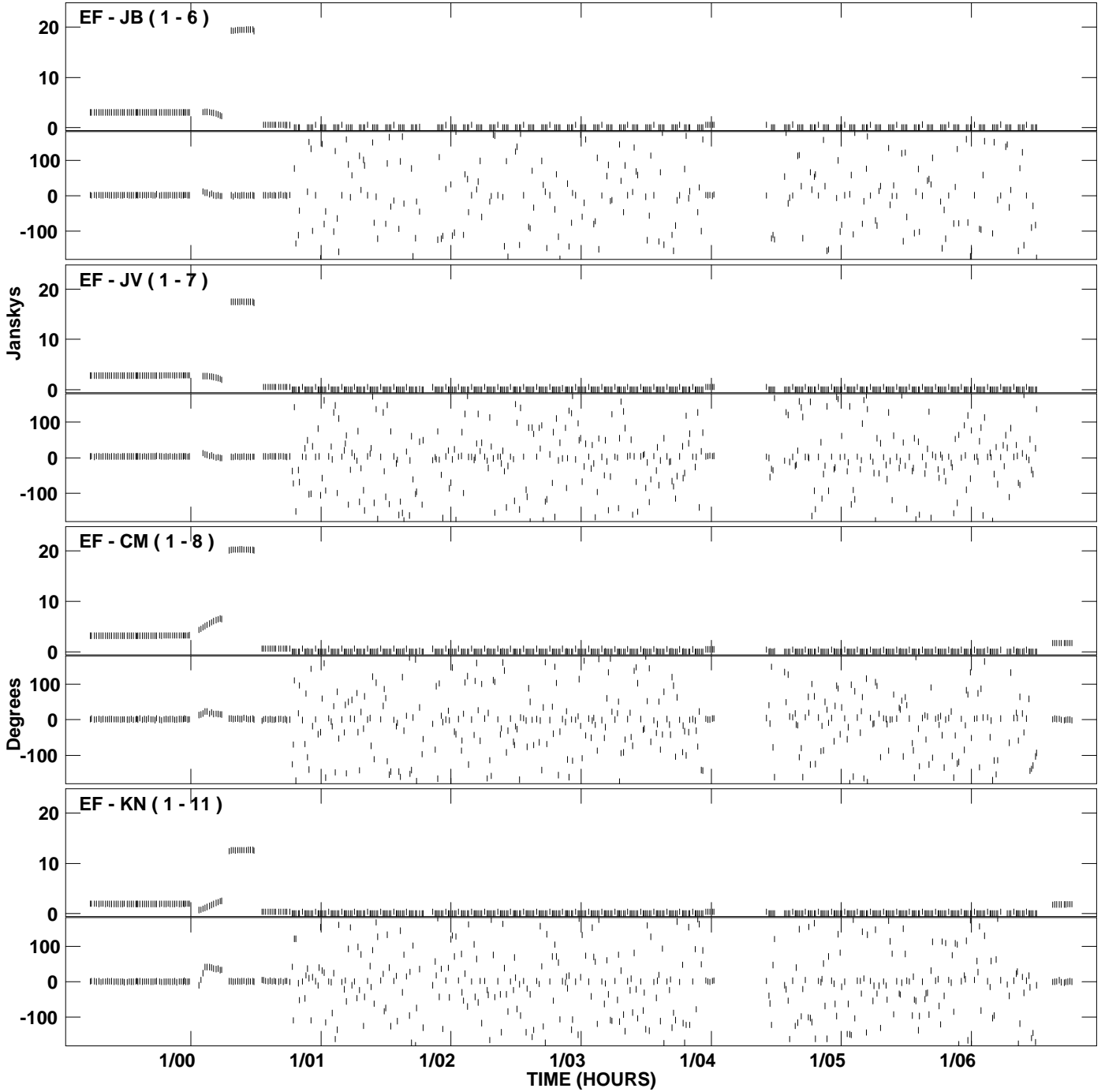
PLot file version 25 created 21-OCT-2009 21:35:40
Amplitude andPhase vs Time for RP015C.UVDATA.1 Vect aver. CL # 3
IF 3 CHAN 1 - 16 STK RR



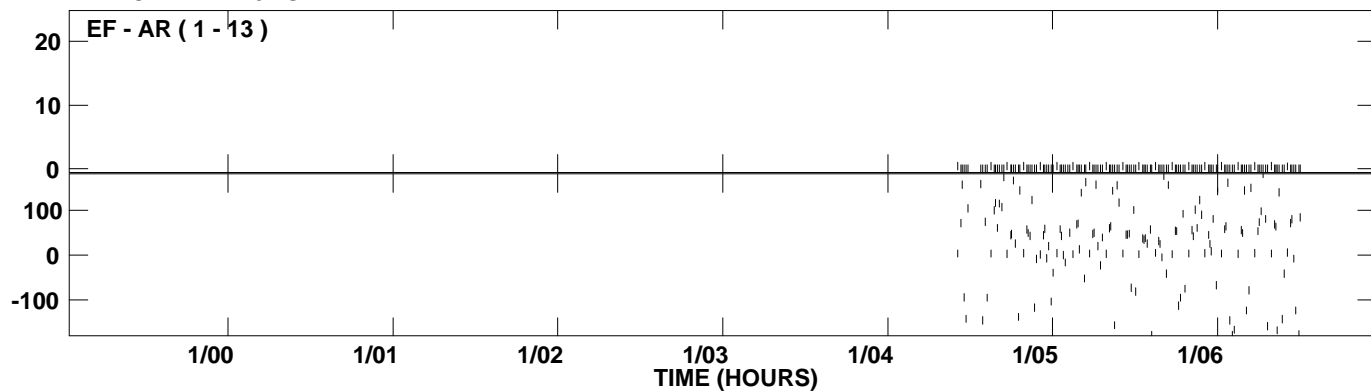
PLot file version 26 created 21-OCT-2009 21:35:55
Amplitude and Phase vs Time for RP015C.UVDATA.1 Vect aver. CL # 3
IF 4 CHAN 1 - 16 STK RR



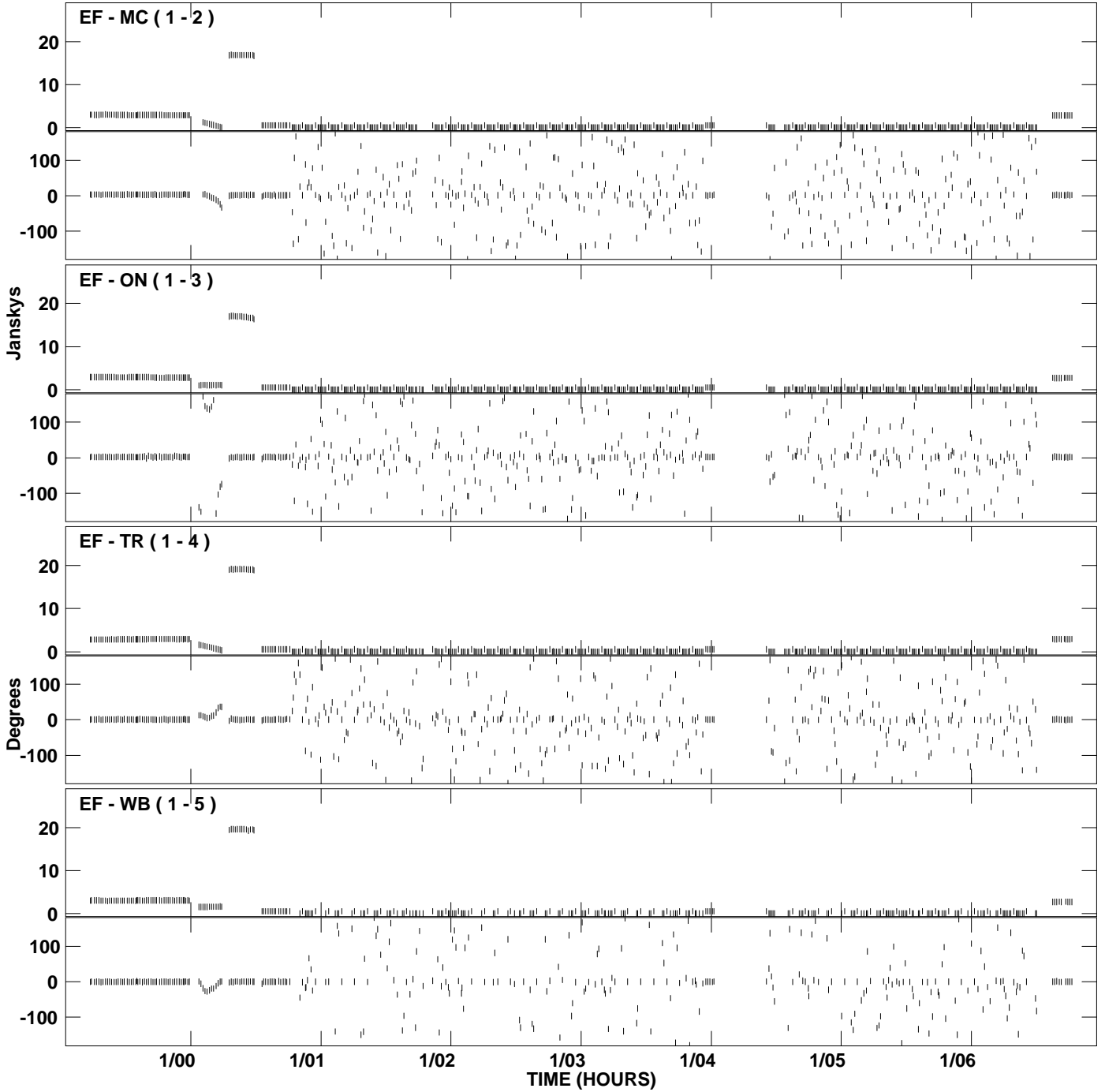
PLot file version 27 created 21-OCT-2009 21:35:55
Amplitude and Phase vs Time for RP015C.UVDATA.1 Vect aver. CL # 3
IF 4 CHAN 1 - 16 STK RR



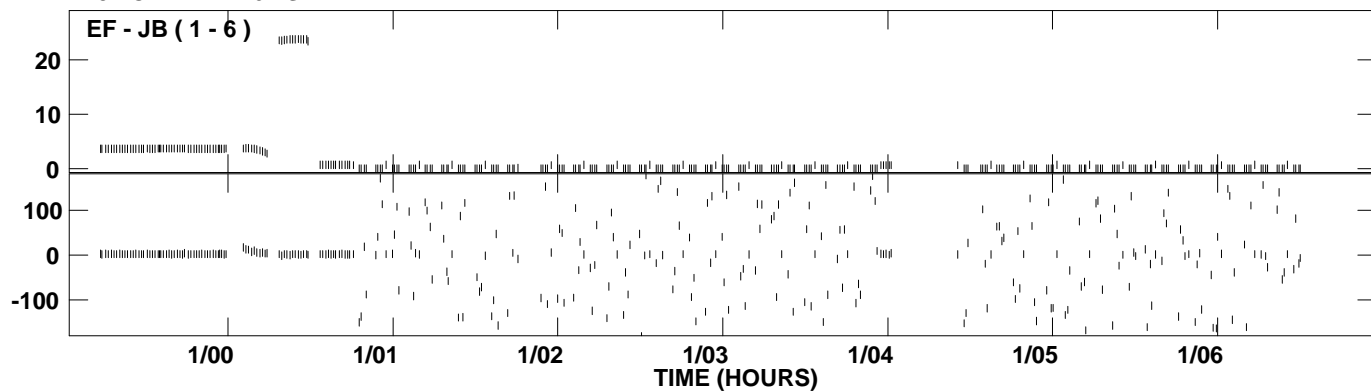
PLot file version 28 created 21-OCT-2009 21:35:55
Amplitude andPhase vs Time for RP015C.UVDATA.1 Vect aver. CL # 3
IF 4 CHAN 1 - 16 STK RR



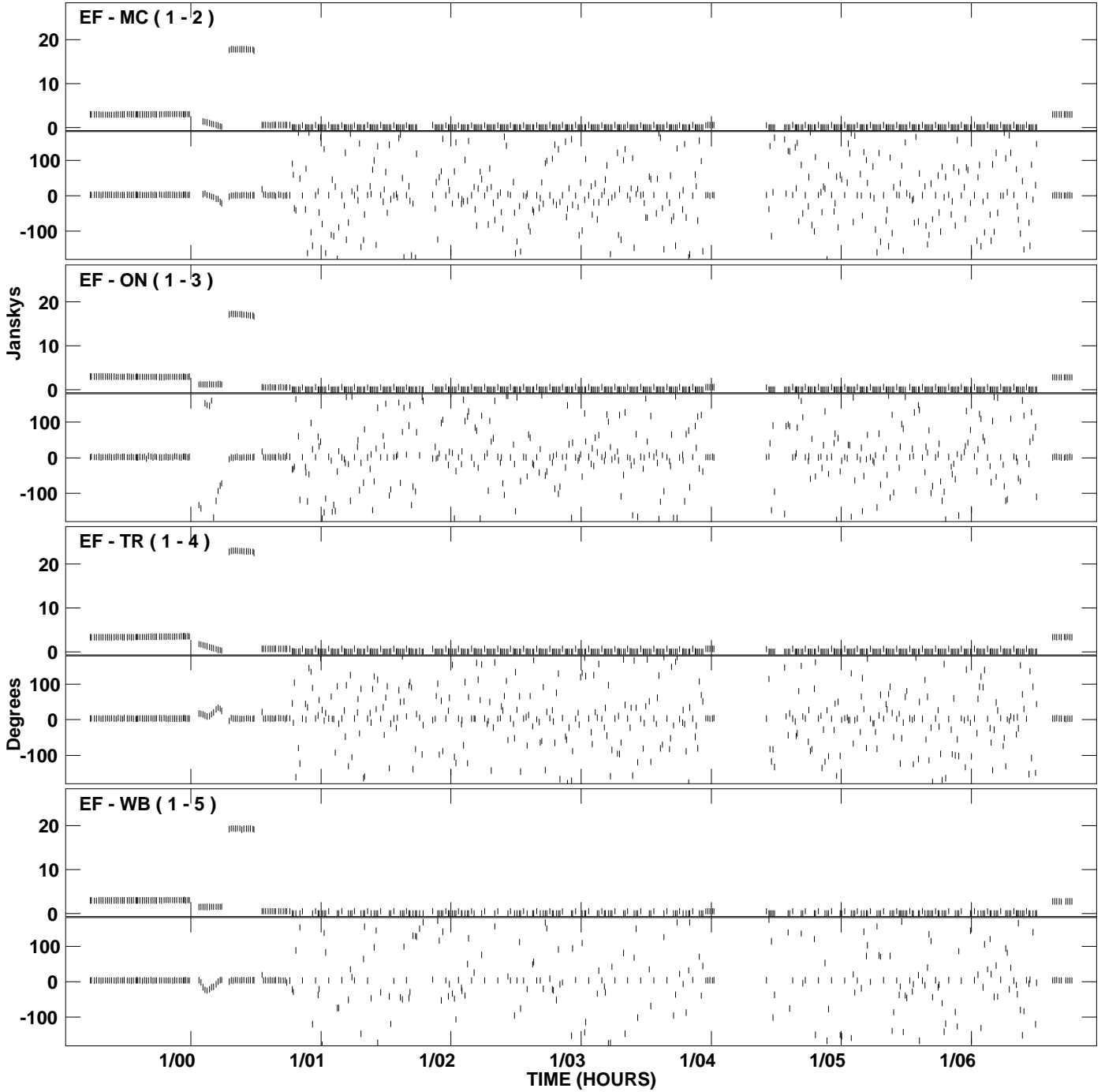
PLot file version 29 created 21-OCT-2009 21:36:08
Amplitude and Phase vs Time for RP015C.UVDATA.1 Vect aver. CL # 3
IF 5 CHAN 1 - 16 STK RR



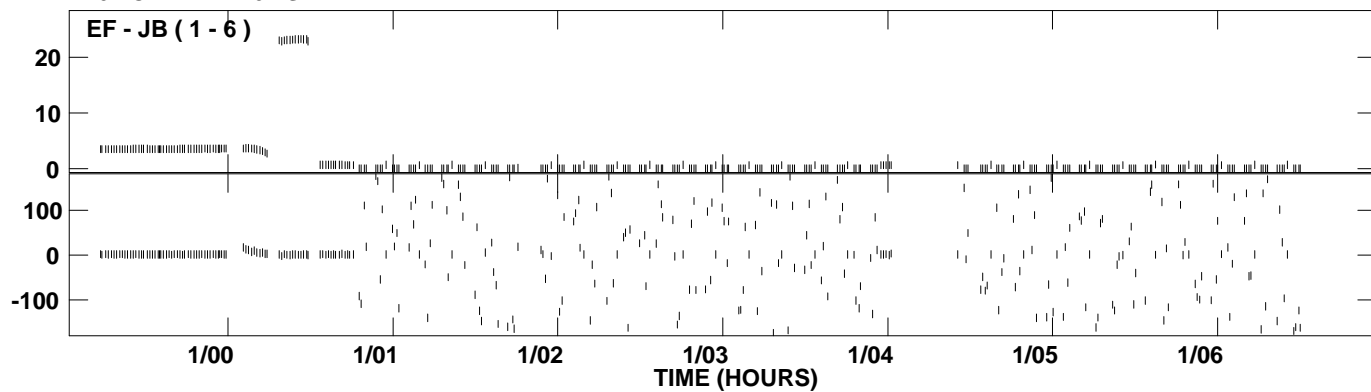
PLot file version 30 created 21-OCT-2009 21:36:08
Amplitude andPhase vs Time for RP015C.UVDATA.1 Vect aver. CL # 3
IF 5 CHAN 1 - 16 STK RR



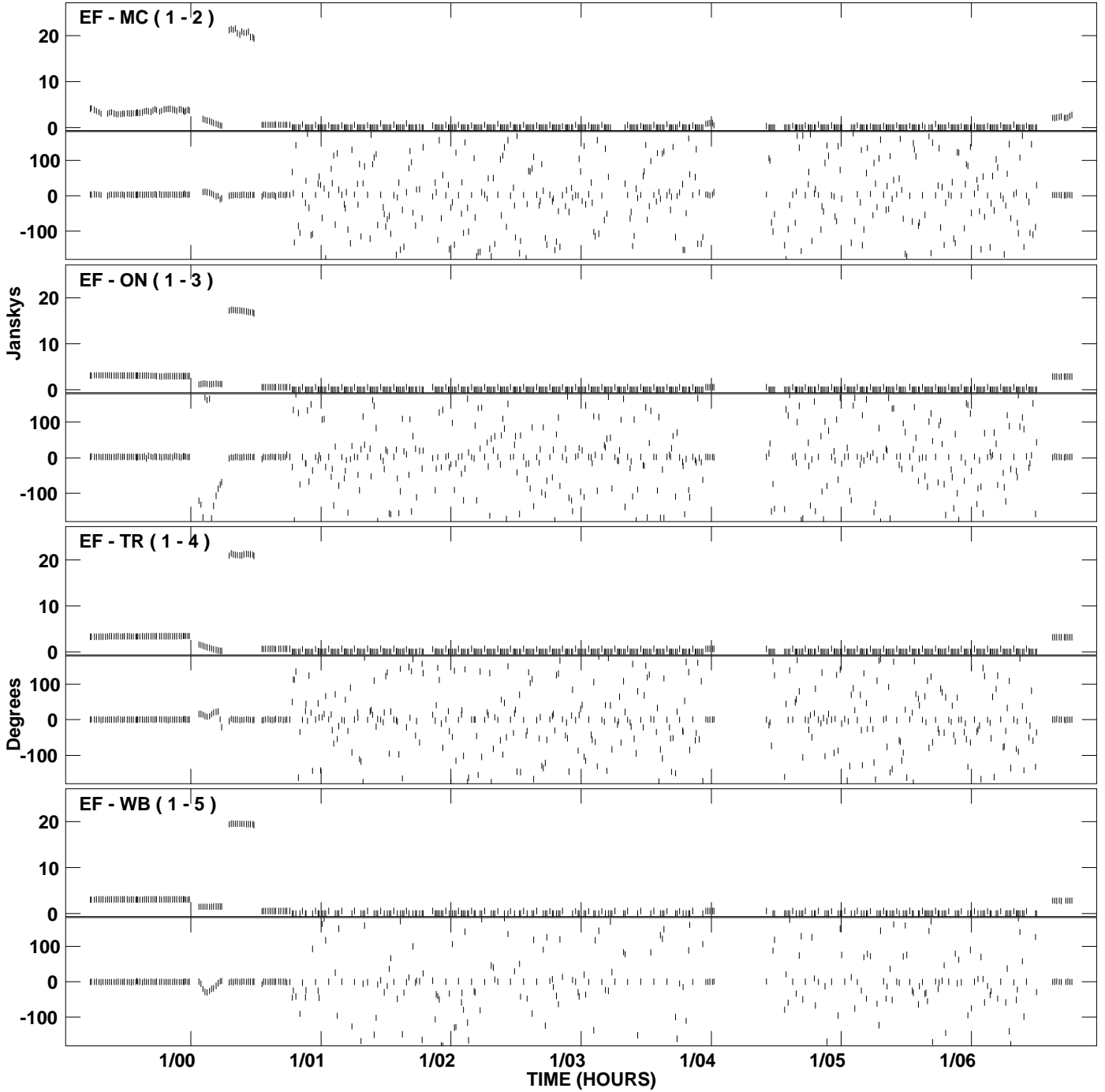
PLot file version 31 created 21-OCT-2009 21:36:21
Amplitude and Phase vs Time for RP015C.UVDATA.1 Vect aver. CL # 3
IF 6 CHAN 1 - 16 STK RR



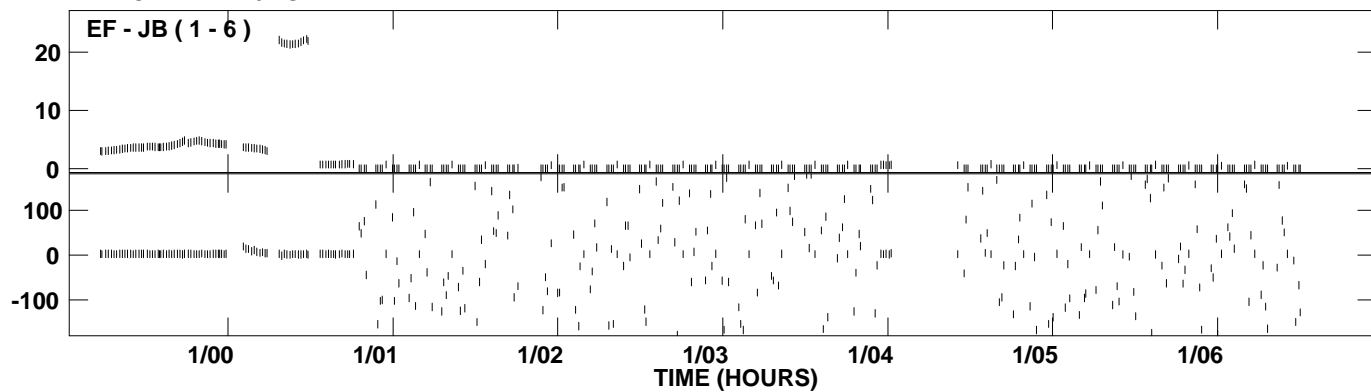
PLot file version 32 created 21-OCT-2009 21:36:21
Amplitude andPhase vs Time for RP015C.UVDATA.1 Vect aver. CL # 3
IF 6 CHAN 1 - 16 STK RR



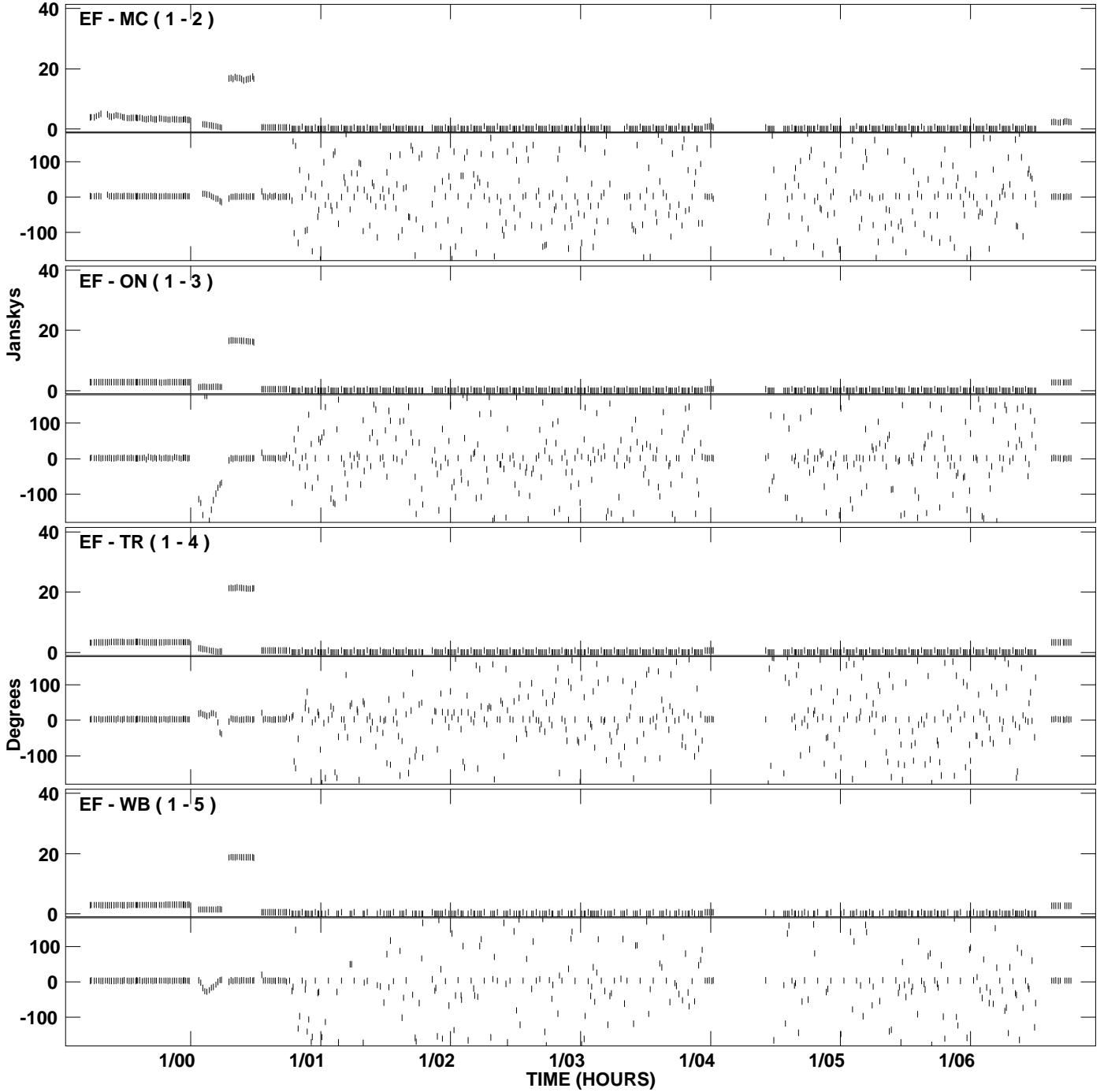
PLot file version 33 created 21-OCT-2009 21:36:35
Amplitude and Phase vs Time for RP015C.UVDATA.1 Vect aver. CL # 3
IF 7 CHAN 1 - 16 STK RR



PLot file version 34 created 21-OCT-2009 21:36:35
Amplitude andPhase vs Time for RP015C.UVDATA.1 Vect aver. CL # 3
IF 7 CHAN 1 - 16 STK RR



PLot file version 35 created 21-OCT-2009 21:36:48
Amplitude and Phase vs Time for RP015C.UVDATA.1 Vect aver. CL # 3
IF 8 CHAN 1 - 16 STK RR



PLot file version 36 created 21-OCT-2009 21:36:48
Amplitude andPhase vs Time for RP015C.UVDATA.1 Vect aver. CL # 3
IF 8 CHAN 1 - 16 STK RR

