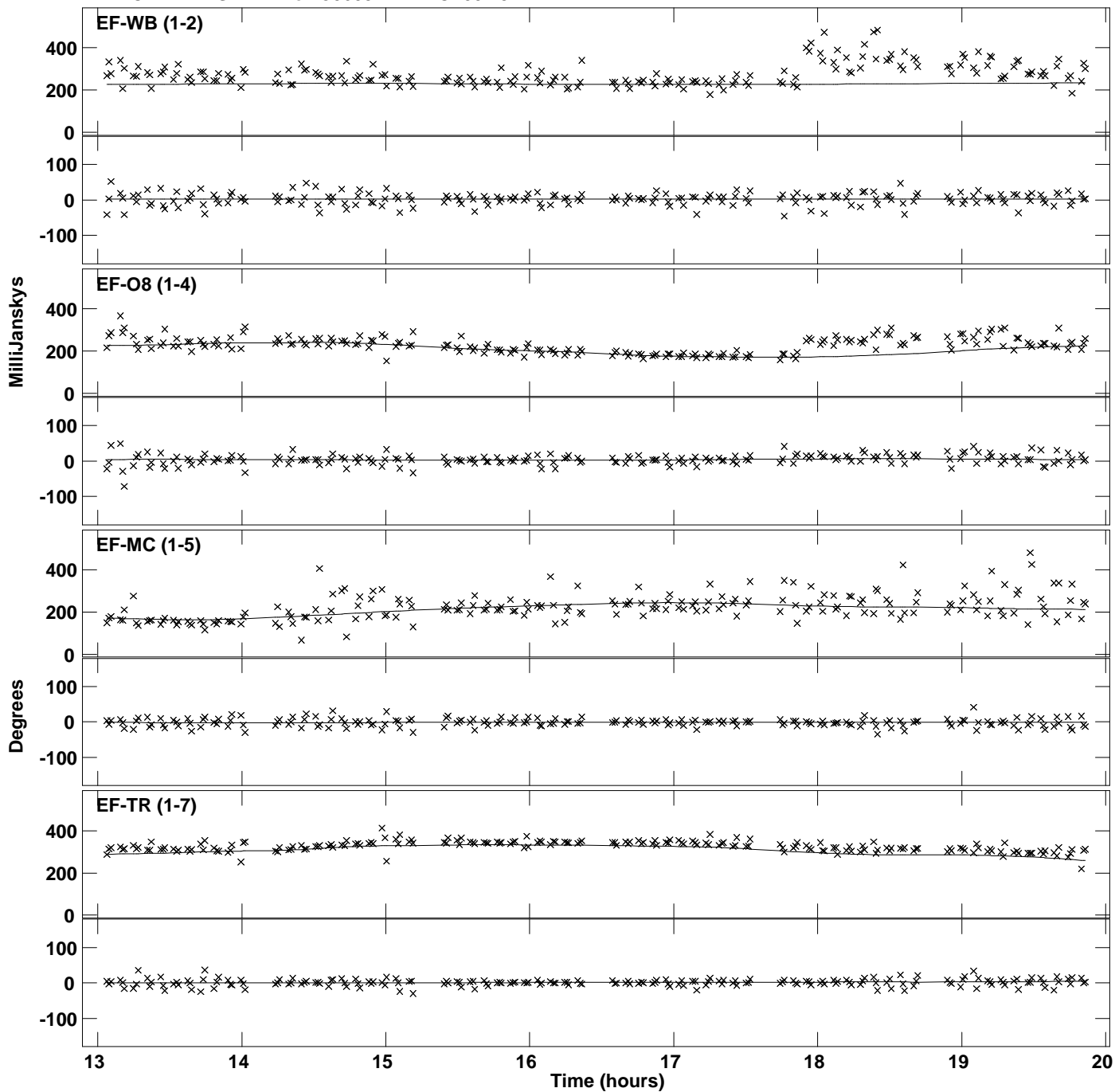
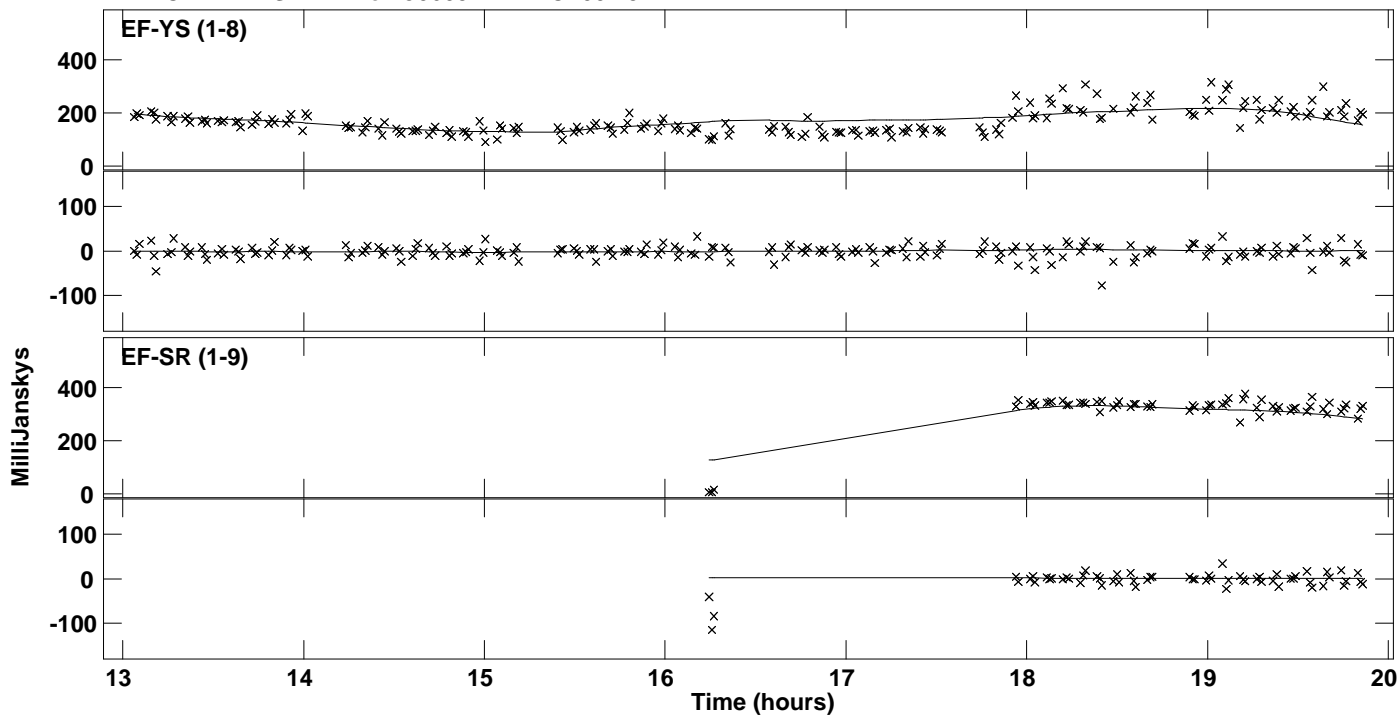


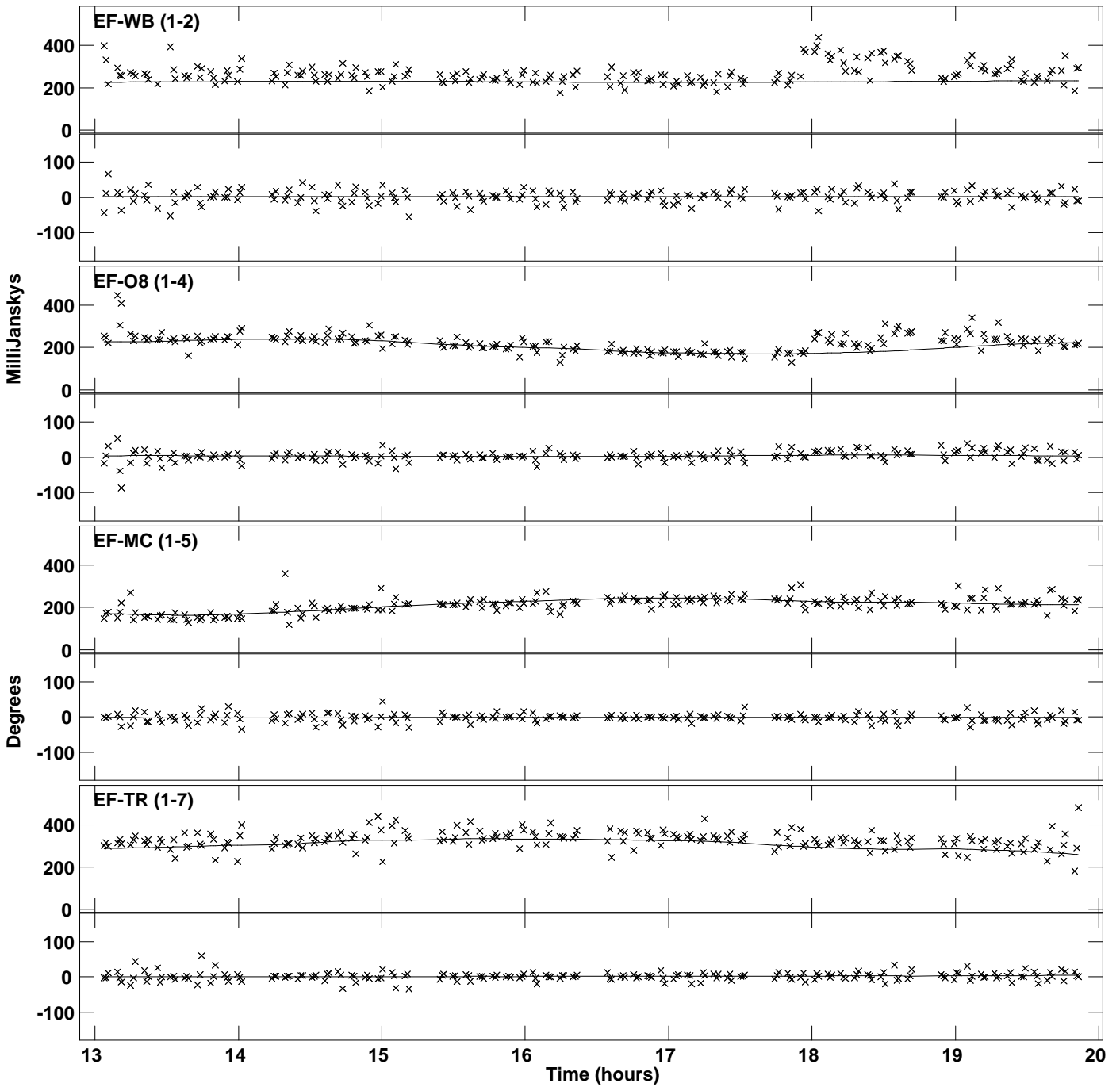
PLot file version 1 created 20-MAY-2016 12:09:16
Amplitude andPhase vs Time for J0603+1742.MULTI.1 Vect aver. CL # 3
IF 1 CHAN 1 STK LL of J0603+1742.ICL001.3



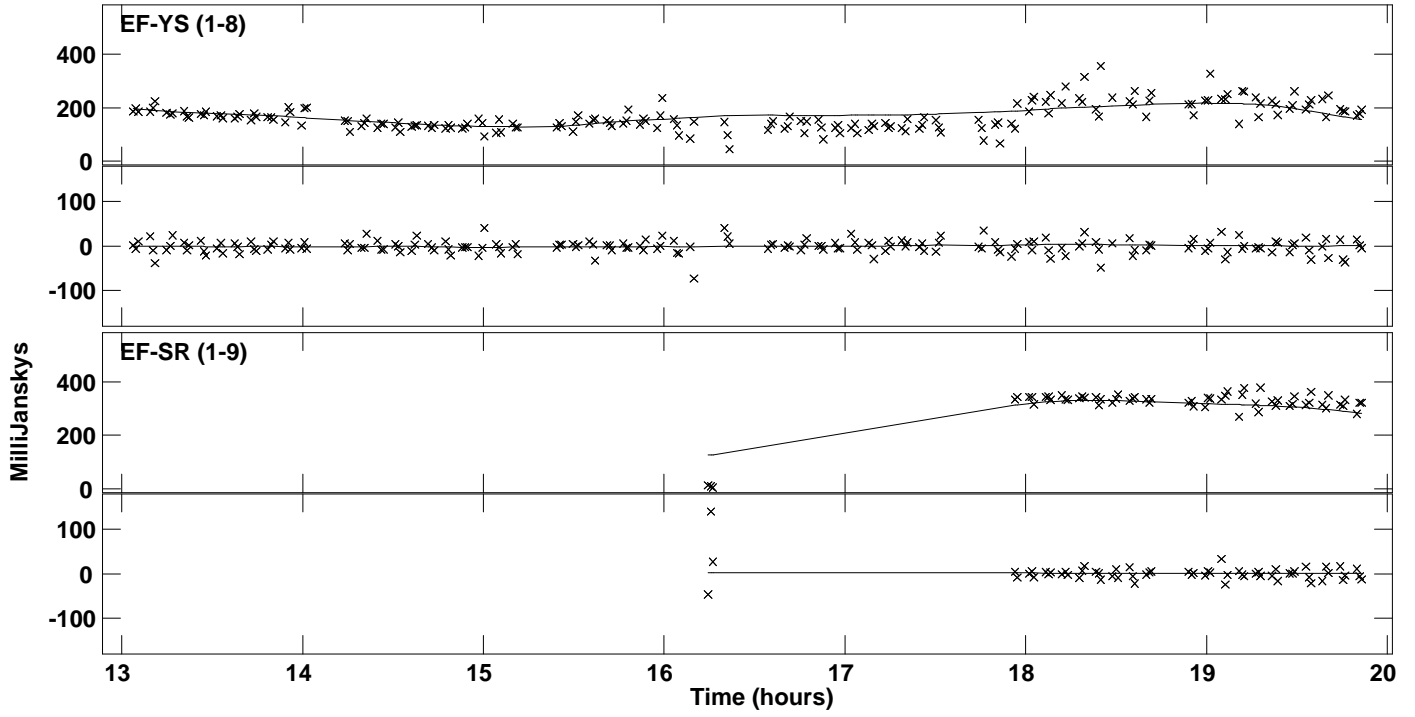
PLot file version 2 created 20-MAY-2016 12:09:16
Amplitude andPhase vs Time for J0603+1742.MULTI.1 Vect aver. CL # 3
IF 1 CHAN 1 STK LL of J0603+1742.ICL001.3



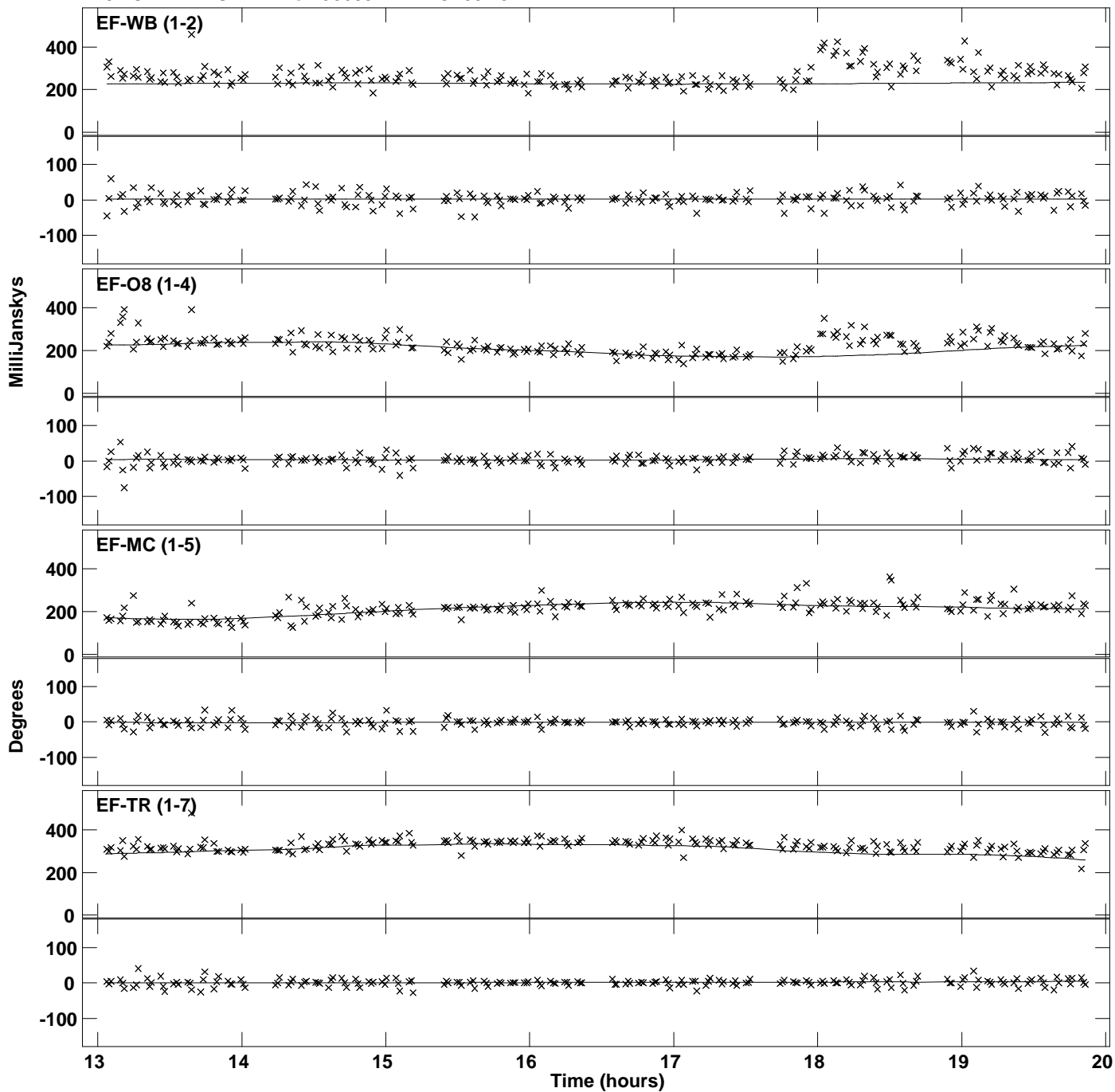
Plot file version 3 created 20-MAY-2016 12:09:16
Amplitude andPhase vs Time for J0603+1742.MULTI.1 Vect aver. CL # 3
IF 2 CHAN 1 STK LL of J0603+1742.ICL001.3



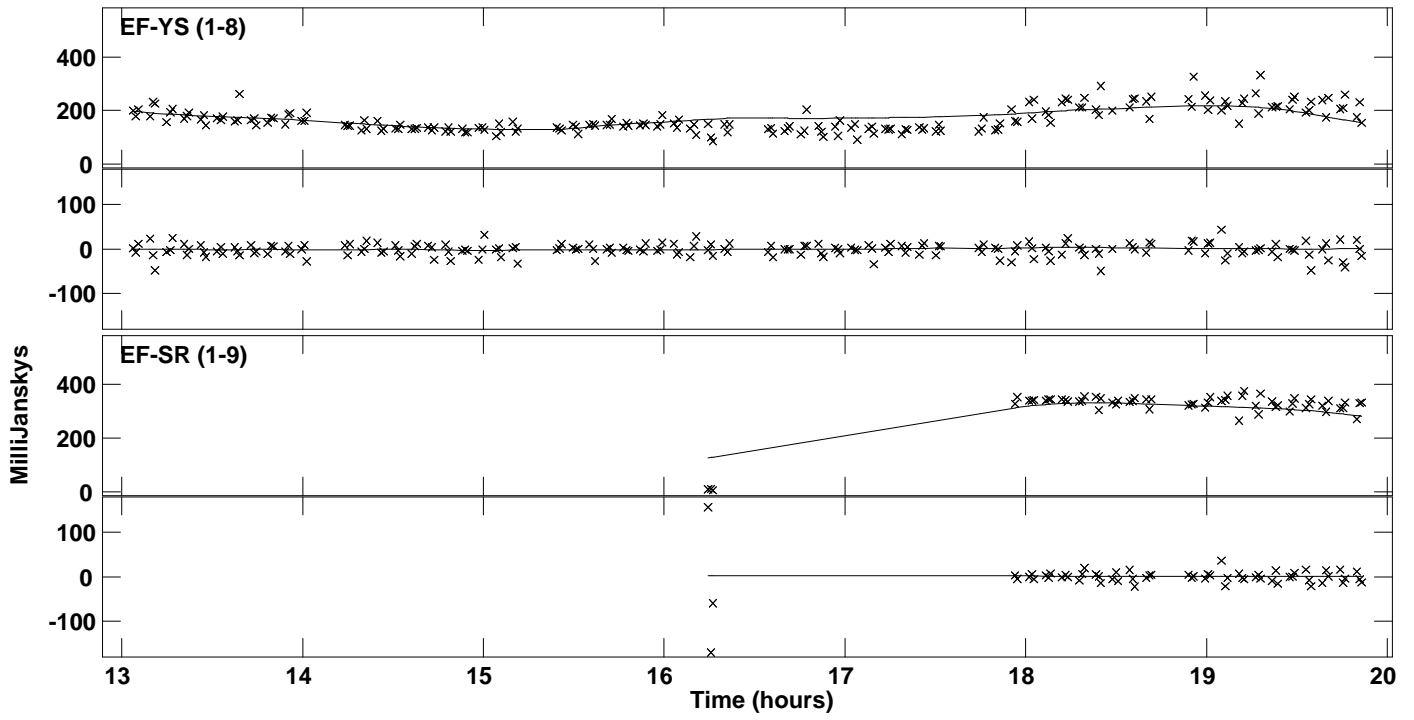
PLot file version 4 created 20-MAY-2016 12:09:16
Amplitude andPhase vs Time for J0603+1742.MULTI.1 Vect aver. CL # 3
IF 2 CHAN 1 STK LL of J0603+1742.ICL001.3



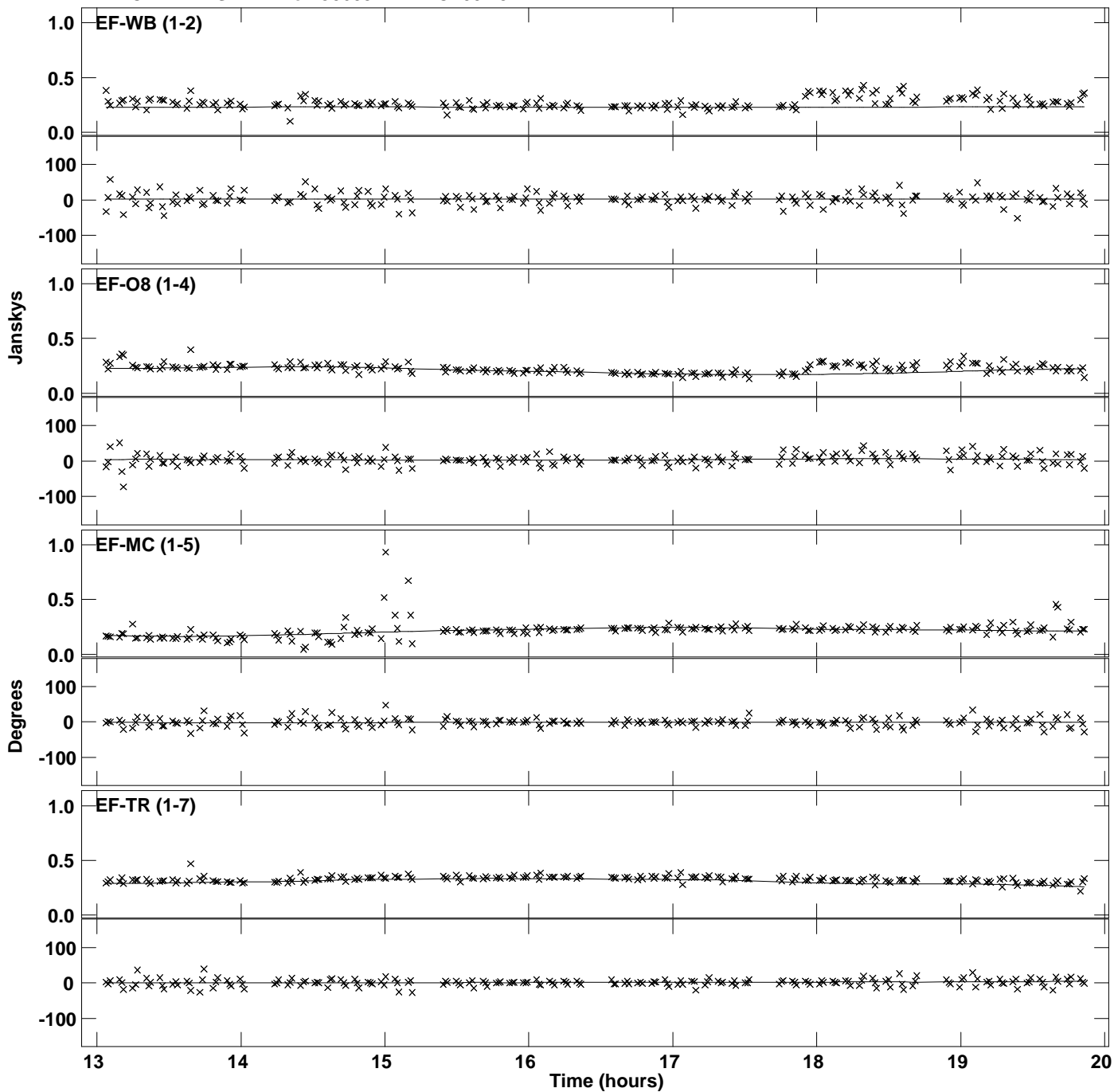
Plot file version 5 created 20-MAY-2016 12:09:16
Amplitude and Phase vs Time for J0603+1742.MULTI.1 Vect aver. CL # 3
IF 3 CHAN 1 STK LL of J0603+1742.ICL001.3



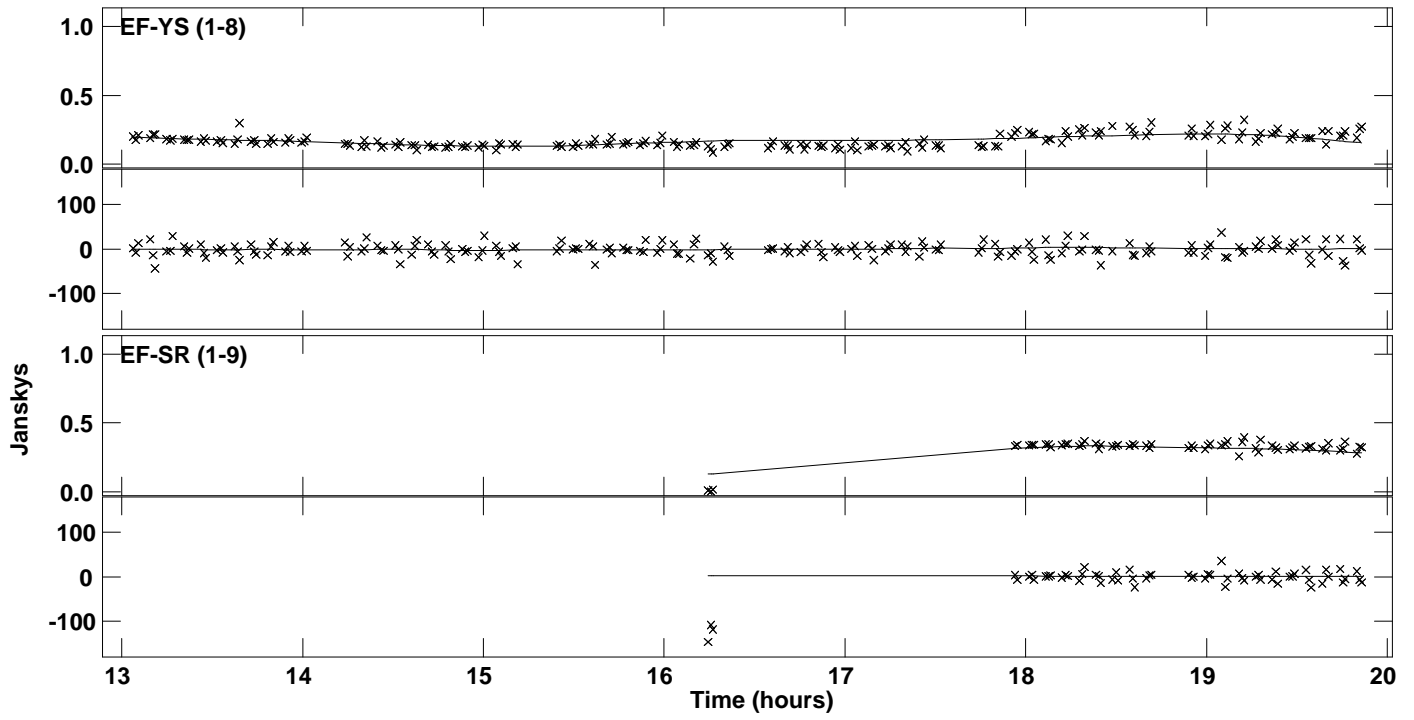
PLot file version 6 created 20-MAY-2016 12:09:16
Amplitude andPhase vs Time for J0603+1742.MULTI.1 Vect aver. CL # 3
IF 3 CHAN 1 STK LL of J0603+1742.ICL001.3



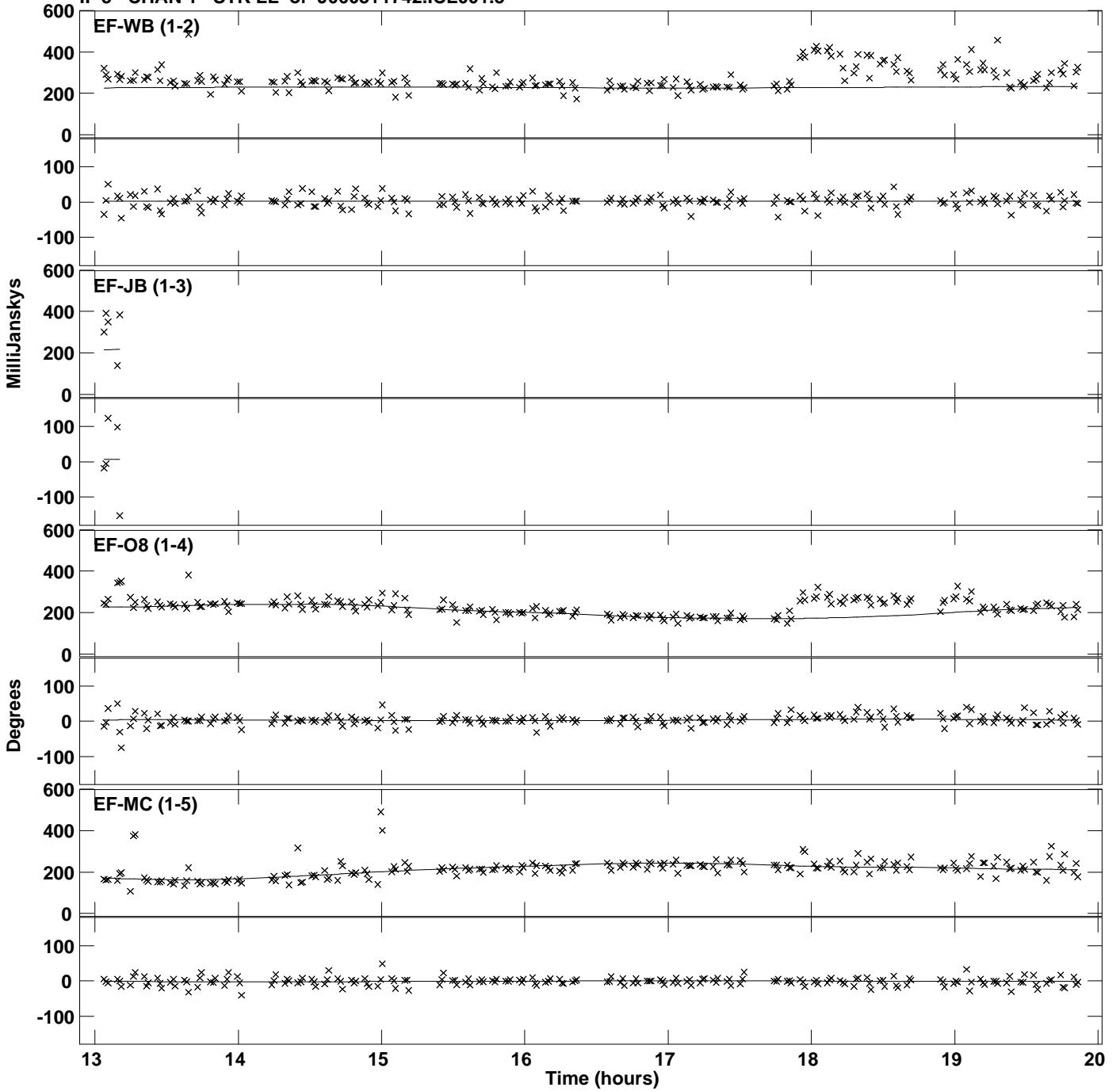
Plot file version 7 created 20-MAY-2016 12:09:17
Amplitude and Phase vs Time for J0603+1742.MULTI.1 Vect aver. CL # 3
IF 4 CHAN 1 STK LL of J0603+1742.ICL001.3



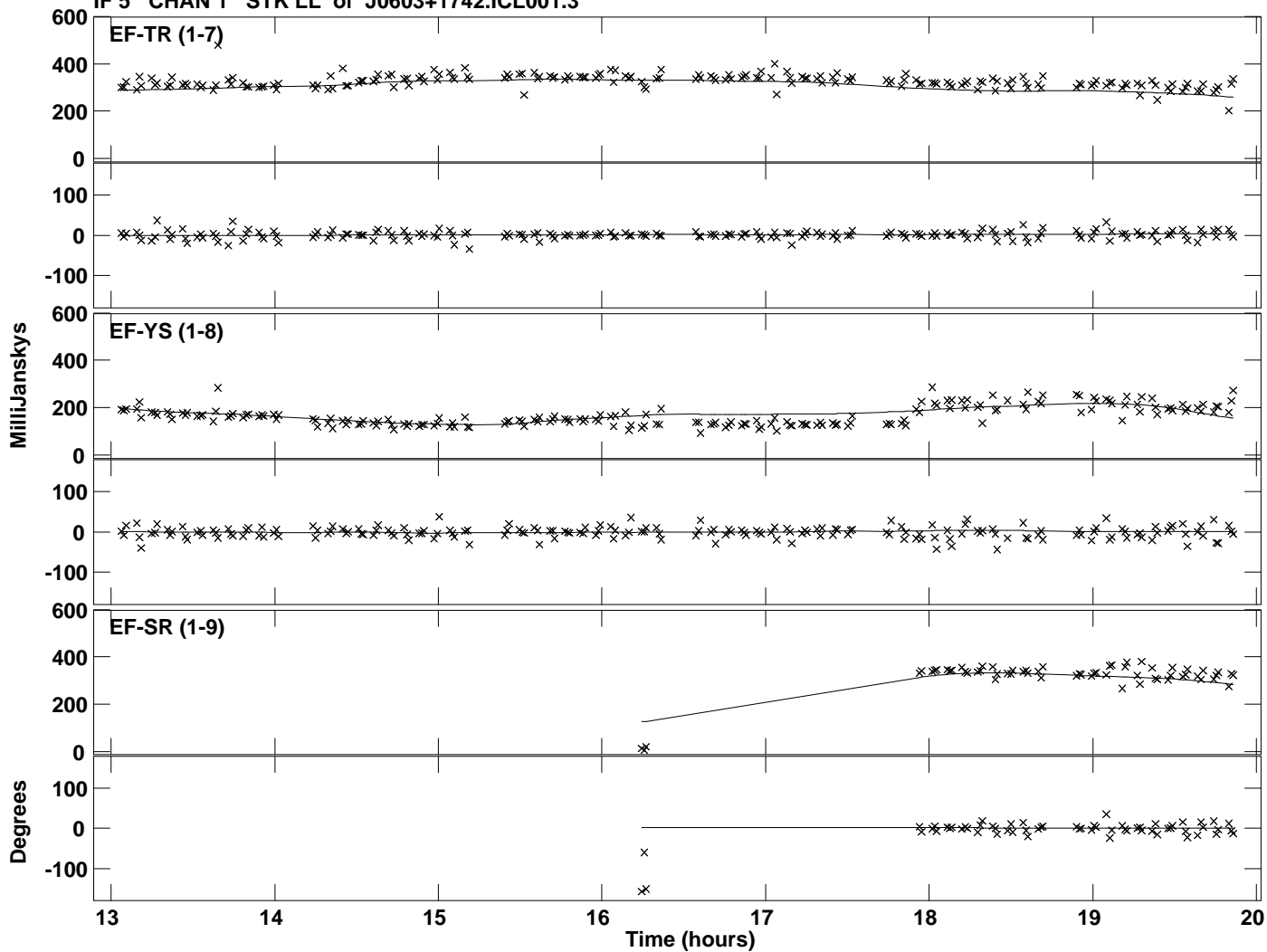
PLot file version 8 created 20-MAY-2016 12:09:17
Amplitude andPhase vs Time for J0603+1742.MULTI.1 Vect aver. CL # 3
IF 4 CHAN 1 STK LL of J0603+1742.ICL001.3



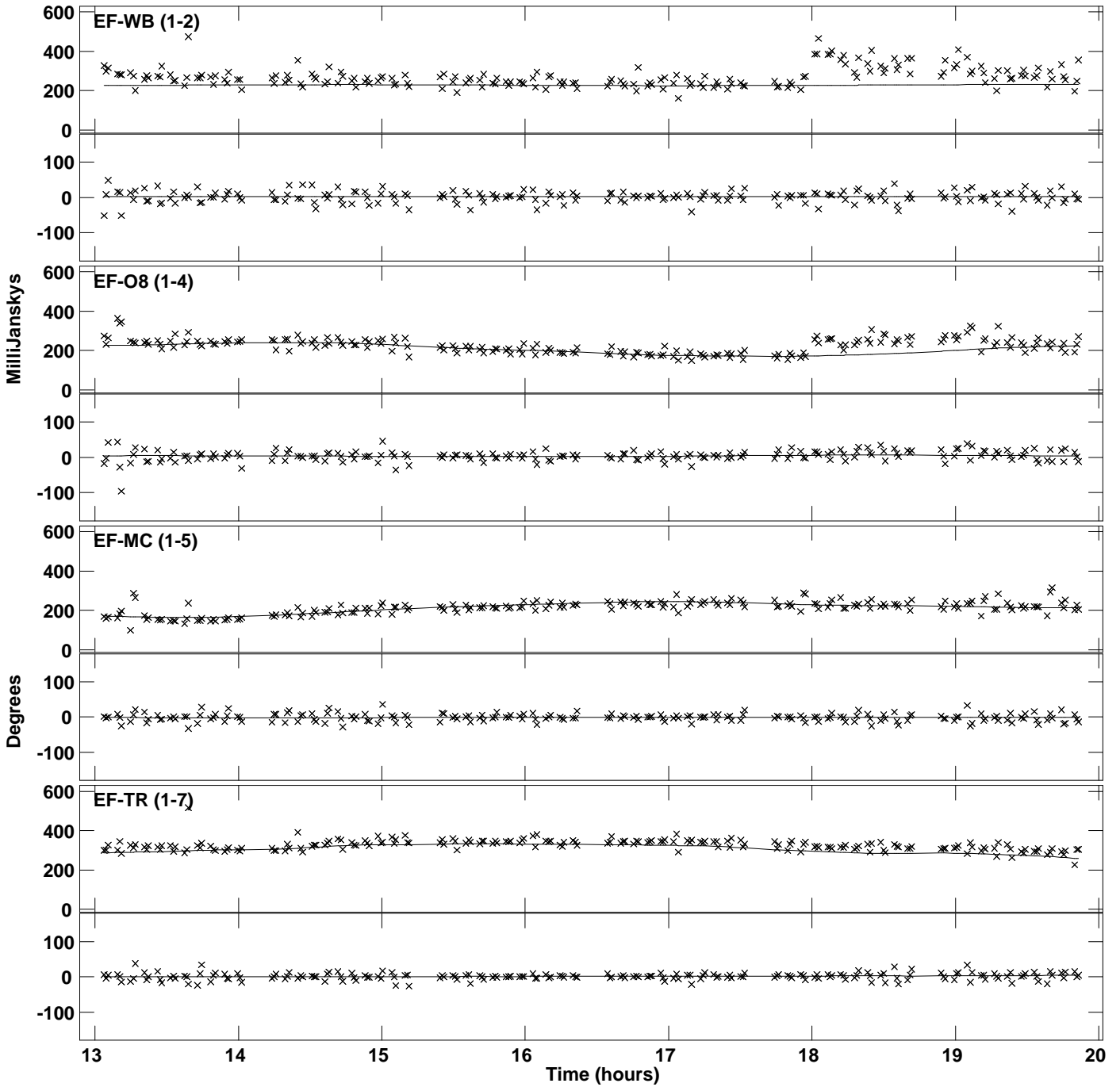
Plot file version 9 created 20-MAY-2016 12:09:17
Amplitude and Phase vs Time for J0603+1742.MULTI.1 Vect aver. CL # 3
IF 5 CHAN 1 STK LL of J0603+1742.ICL001.3



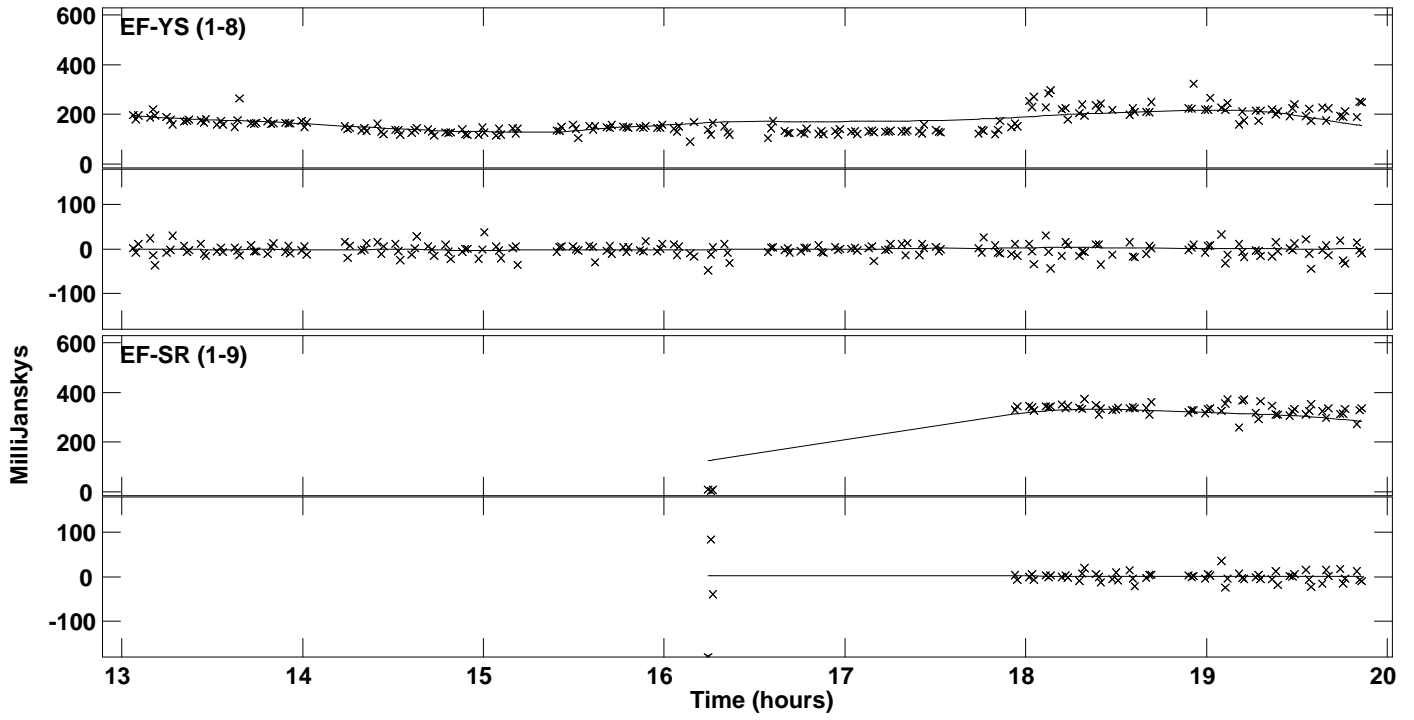
Plot file version 10 created 20-MAY-2016 12:09:17
Amplitude and Phase vs Time for J0603+1742.MULTI.1 Vect aver. CL # 3
IF 5 CHAN 1 STK LL of J0603+1742.ICL001.3



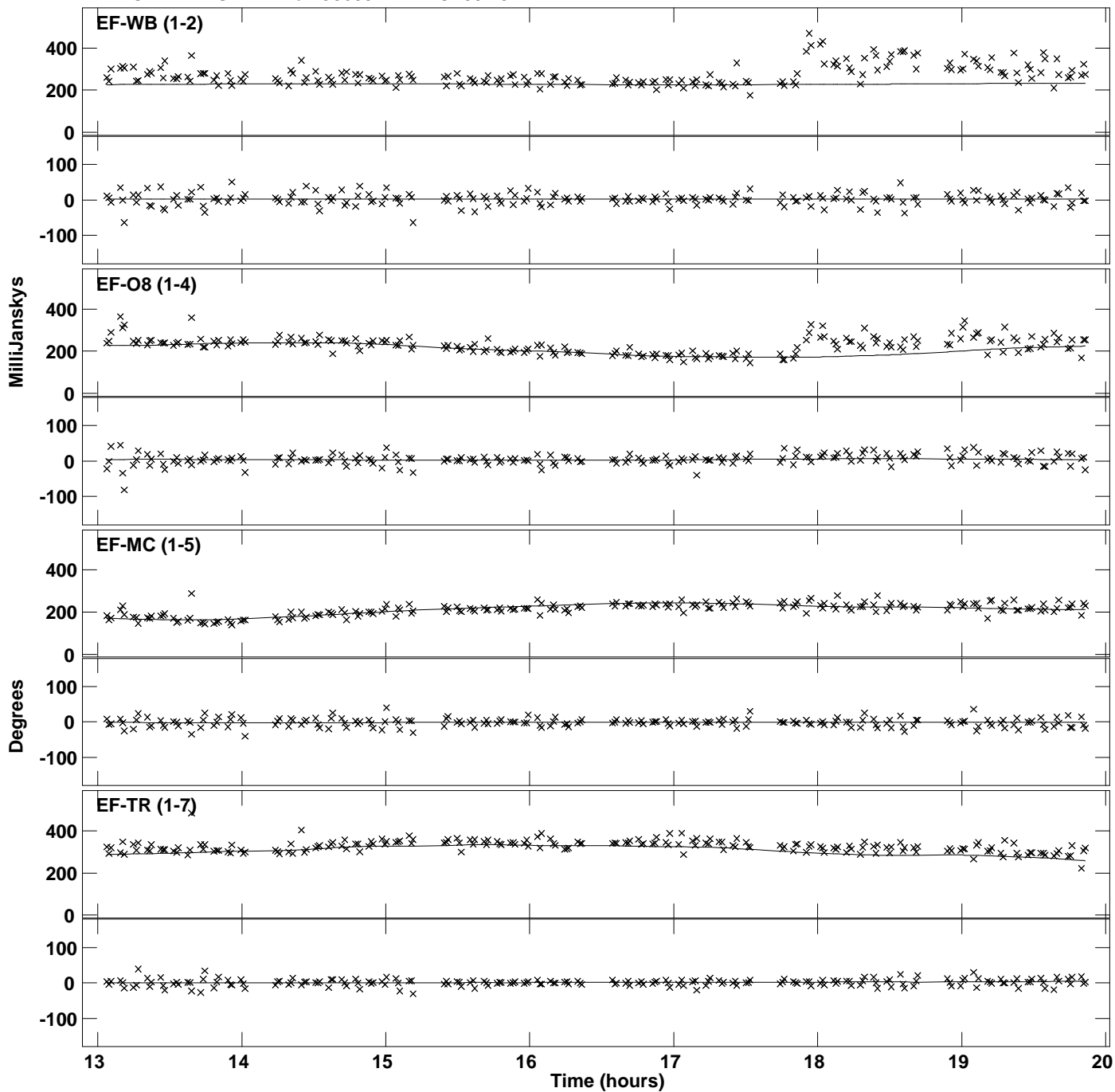
Plot file version 11 created 20-MAY-2016 12:09:18
Amplitude and Phase vs Time for J0603+1742.MULTI.1 Vect aver. CL # 3
IF 6 CHAN 1 STK LL of J0603+1742.ICL001.3



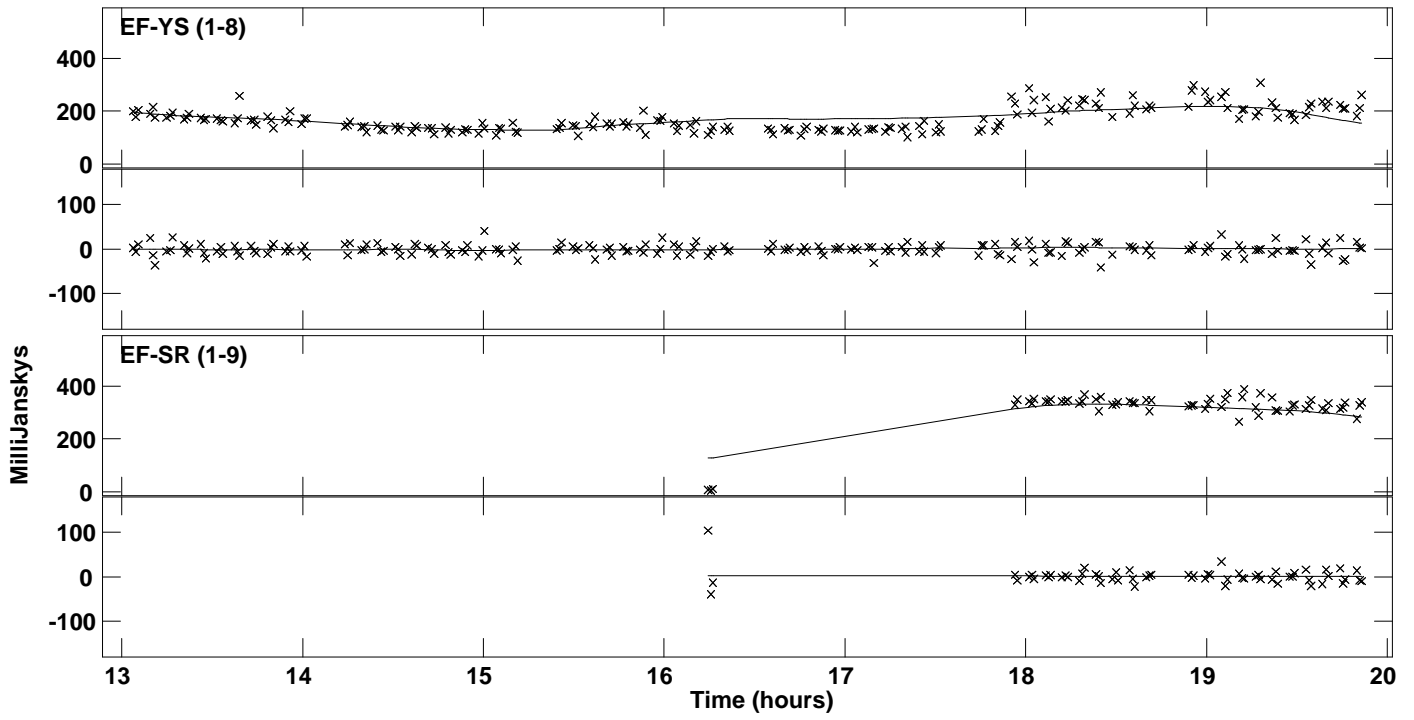
Plot file version 12 created 20-MAY-2016 12:09:18
Amplitude and Phase vs Time for J0603+1742.MULTI.1 Vect aver. CL # 3
IF 6 CHAN 1 STK LL of J0603+1742.ICL001.3



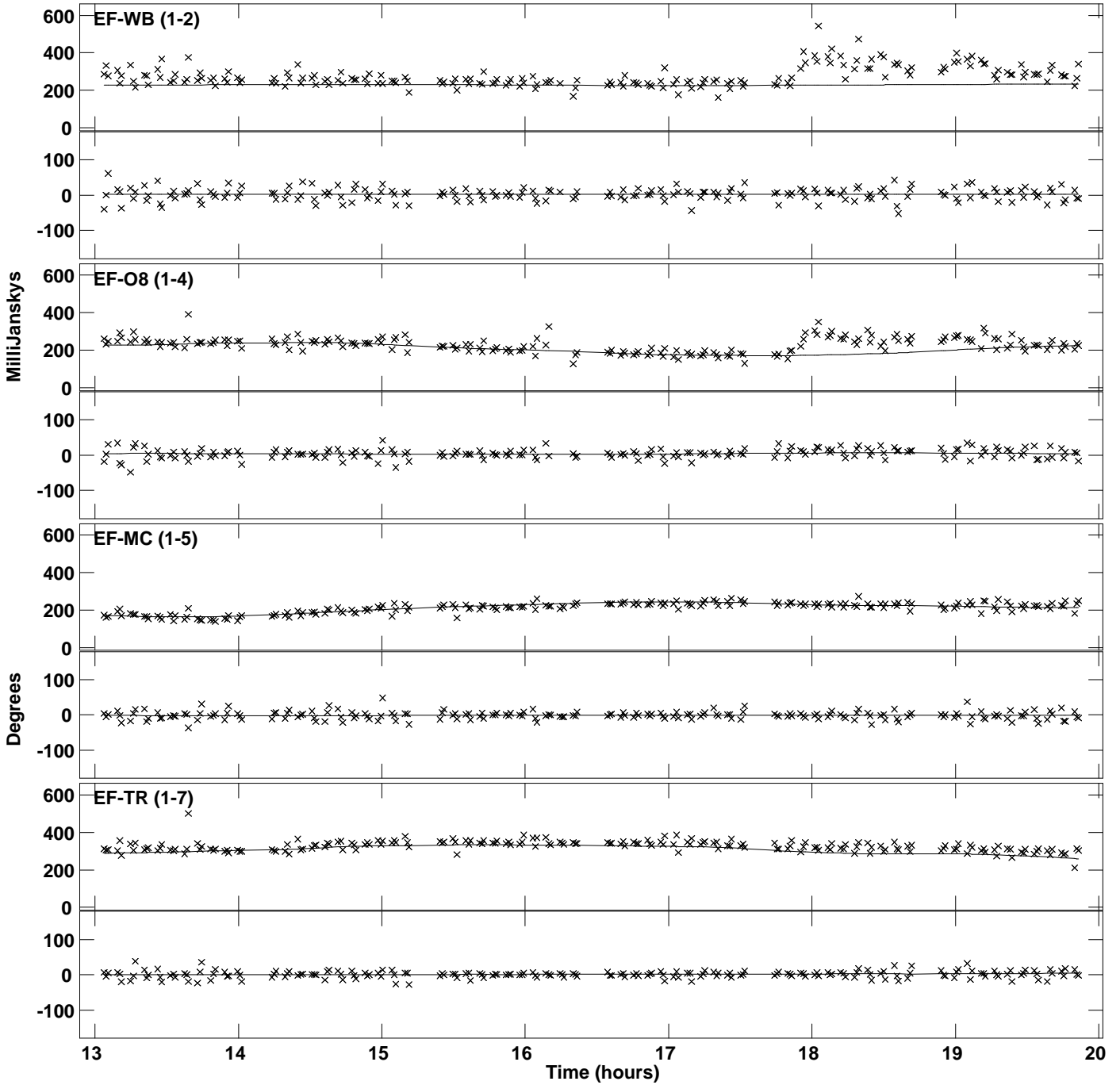
Plot file version 13 created 20-MAY-2016 12:09:18
Amplitude andPhase vs Time for J0603+1742.MULTI.1 Vect aver. CL # 3
IF 7 CHAN 1 STK LL of J0603+1742.ICL001.3



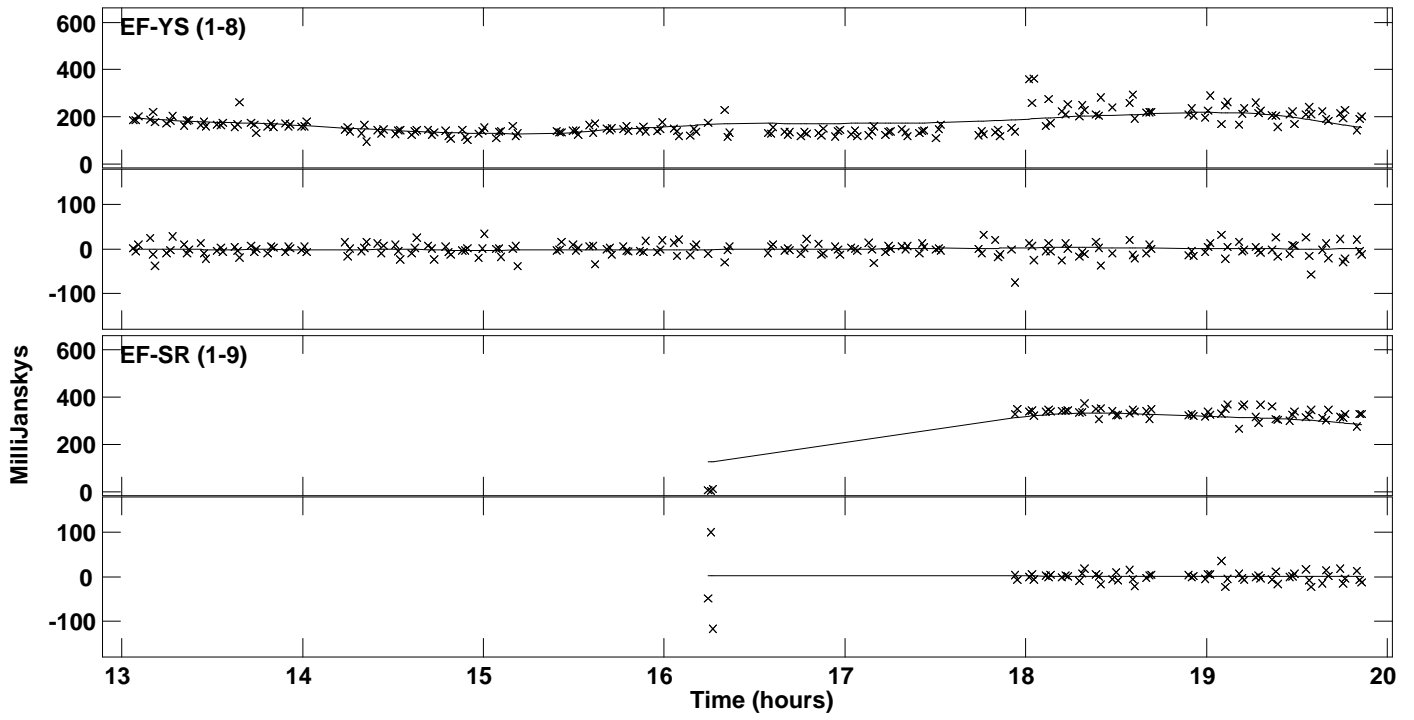
PLot file version 14 created 20-MAY-2016 12:09:18
Amplitude and Phase vs Time for J0603+1742.MULTI.1 Vect aver. CL # 3
IF 7 CHAN 1 STK LL of J0603+1742.ICL001.3



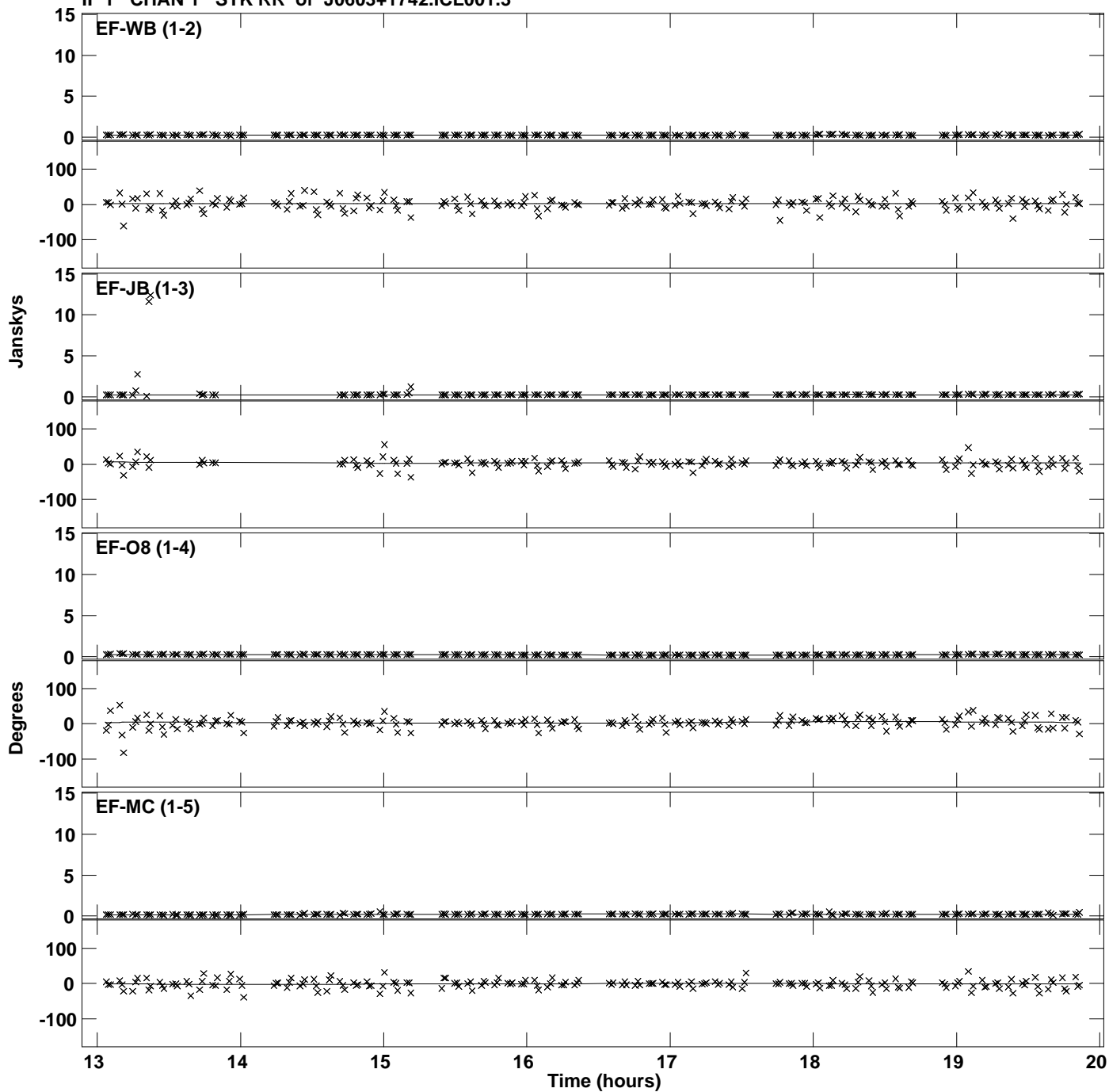
Plot file version 15 created 20-MAY-2016 12:09:19
Amplitude andPhase vs Time for J0603+1742.MULTI.1 Vect aver. CL # 3
IF 8 CHAN 1 STK LL of J0603+1742.ICL001.3



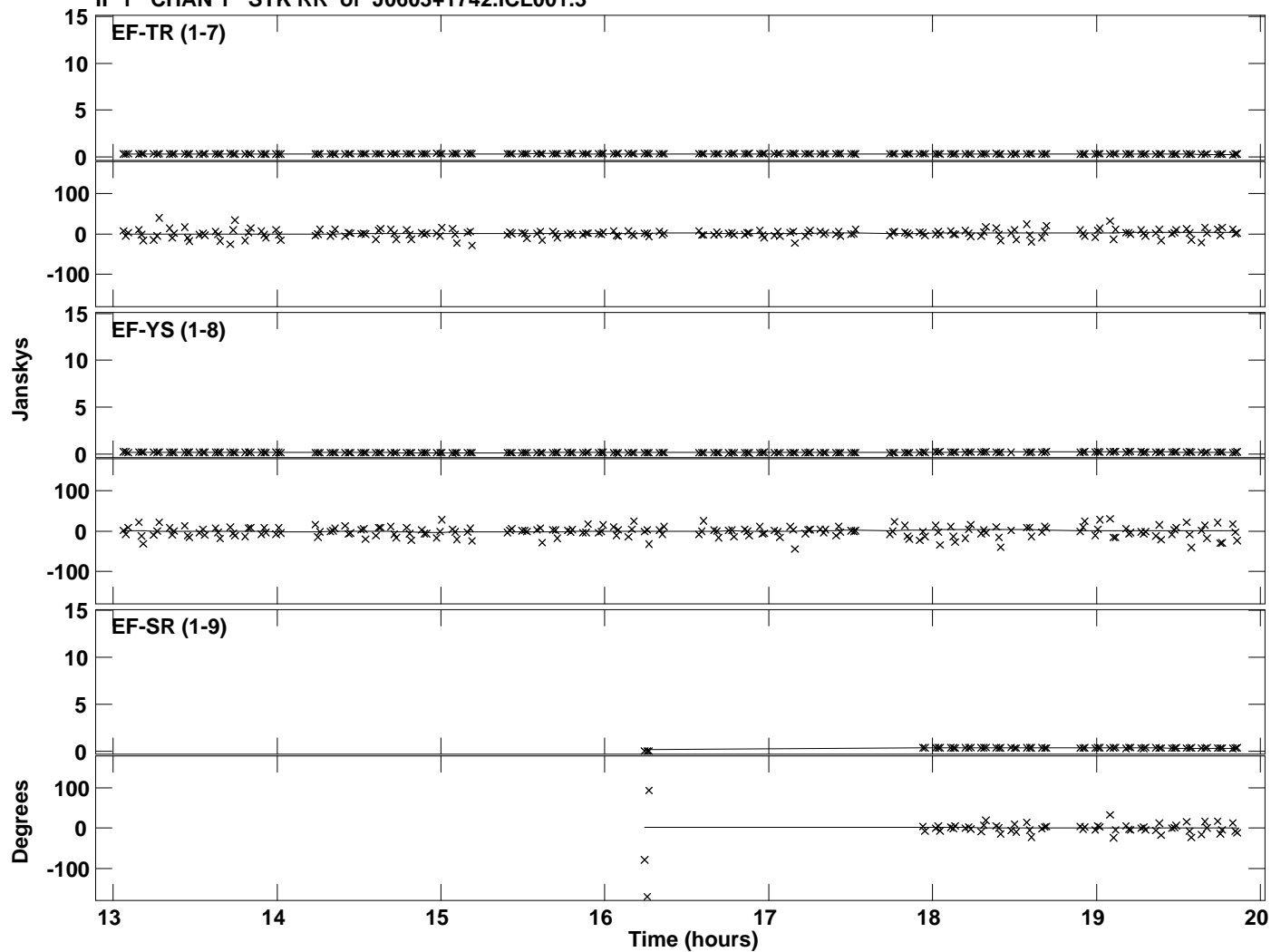
PLot file version 16 created 20-MAY-2016 12:09:19
Amplitude andPhase vs Time for J0603+1742.MULTI.1 Vect aver. CL # 3
IF 8 CHAN 1 STK LL of J0603+1742.ICL001.3



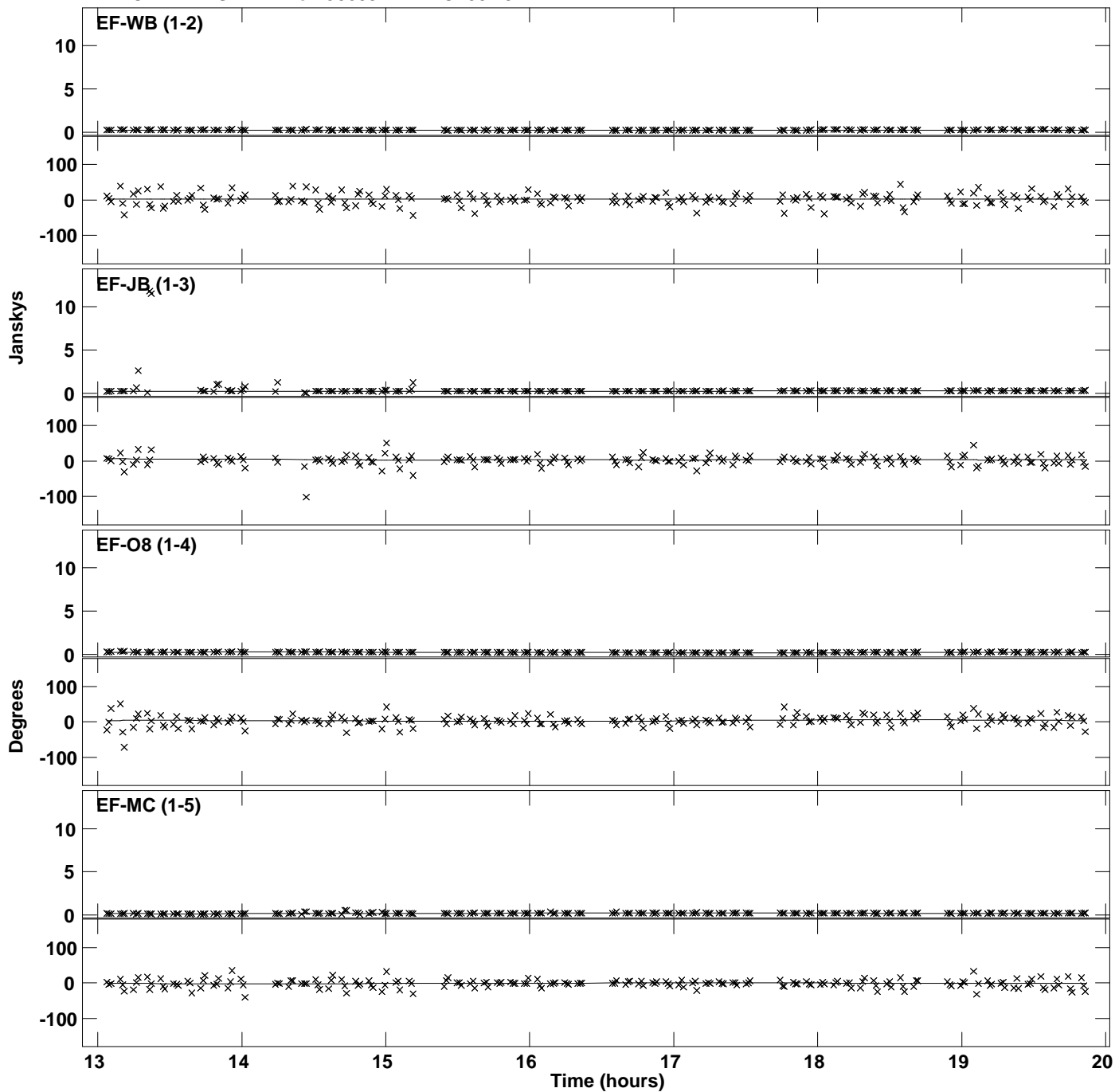
Plot file version 17 created 20-MAY-2016 12:09:19
Amplitude and Phase vs Time for J0603+1742.MULTI.1 Vect aver. CL # 3
IF 1 CHAN 1 STK RR of J0603+1742.ICL001.3



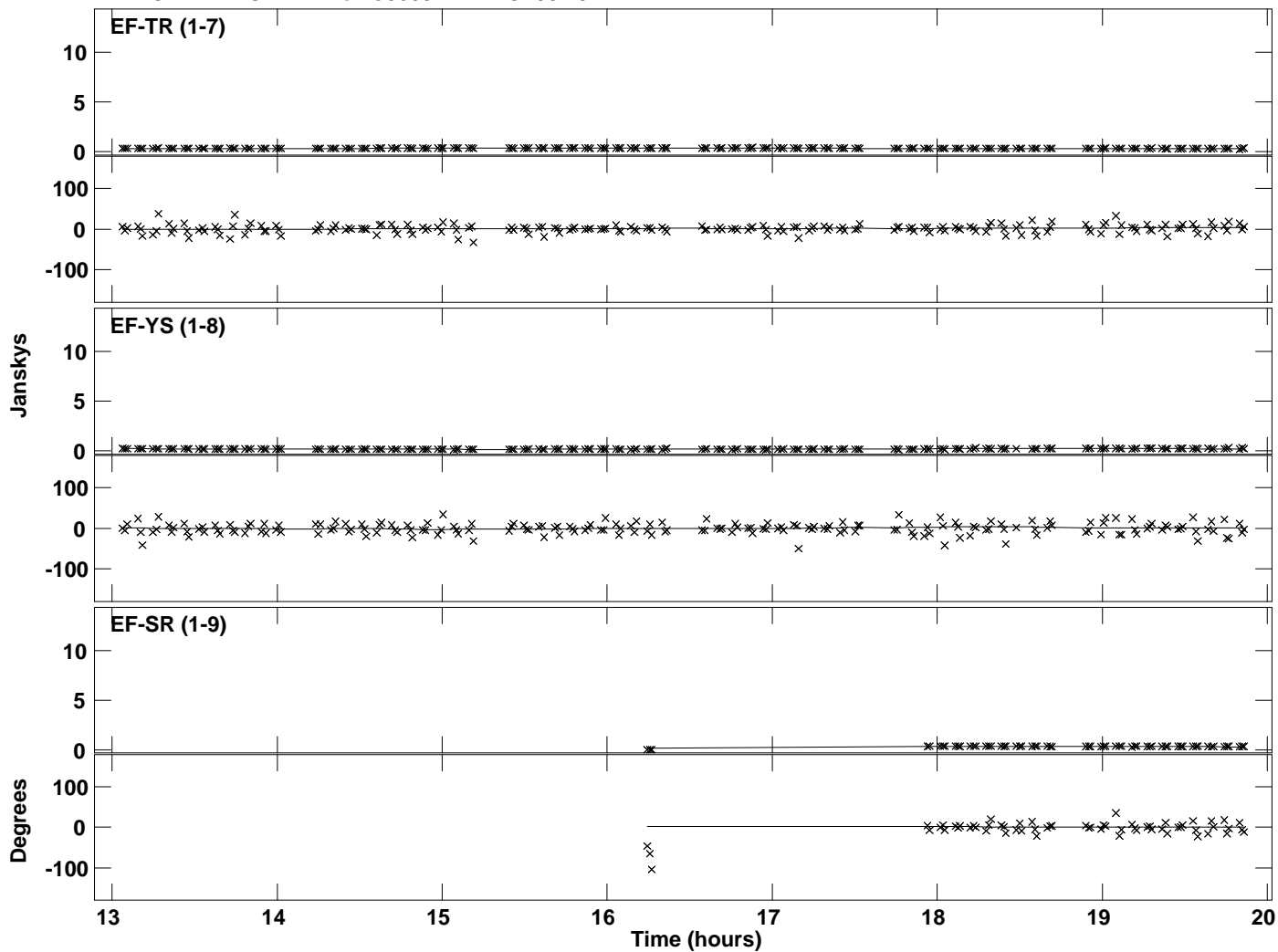
Plot file version 18 created 20-MAY-2016 12:09:19
Amplitude and Phase vs Time for J0603+1742.MULTI.1 Vect aver. CL # 3
IF 1 CHAN 1 STK RR of J0603+1742.ICL001.3



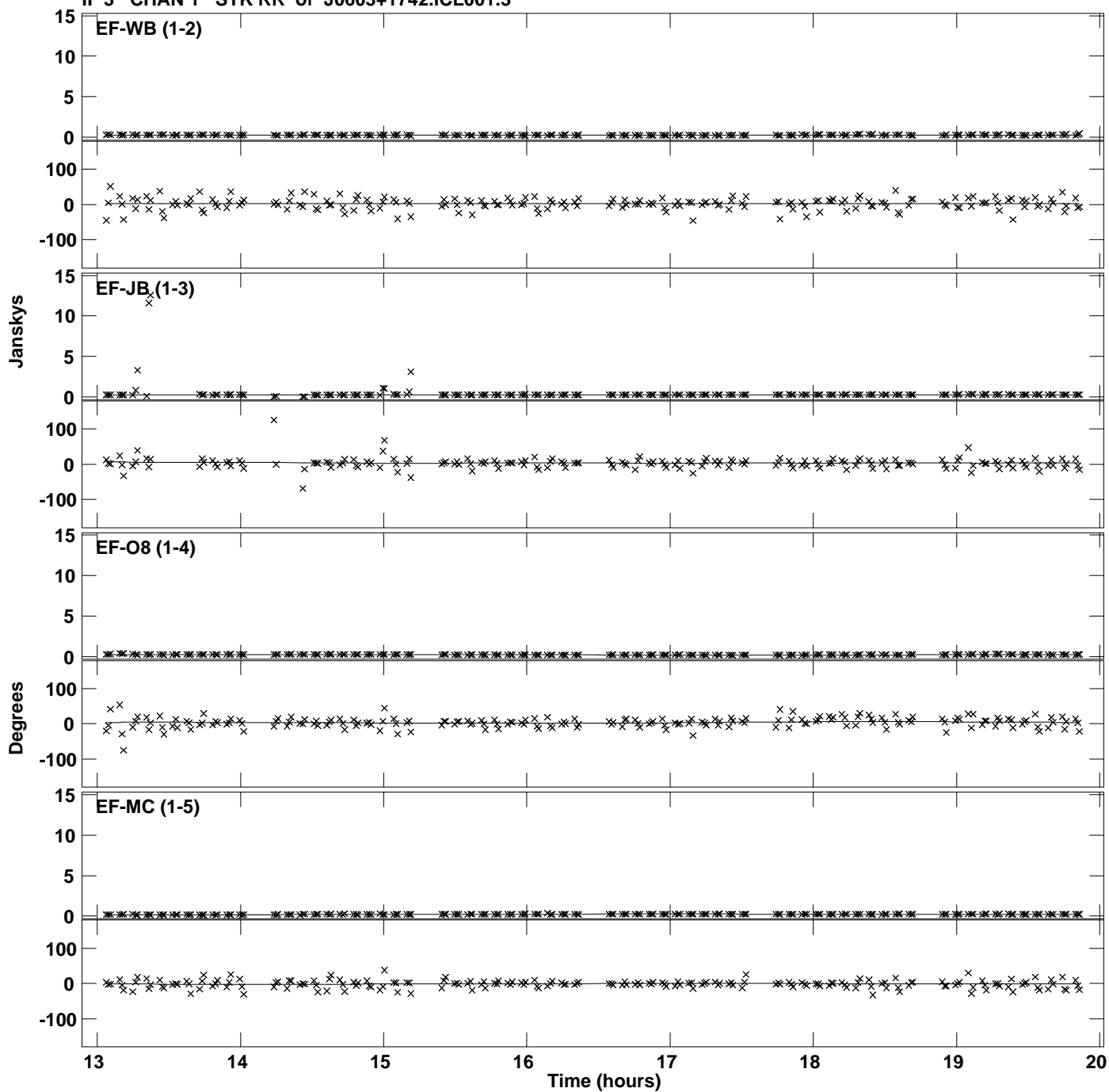
Plot file version 19 created 20-MAY-2016 12:09:20
Amplitude andPhase vs Time for J0603+1742.MULTI.1 Vect aver. CL # 3
IF 2 CHAN 1 STK RR of J0603+1742.ICL001.3



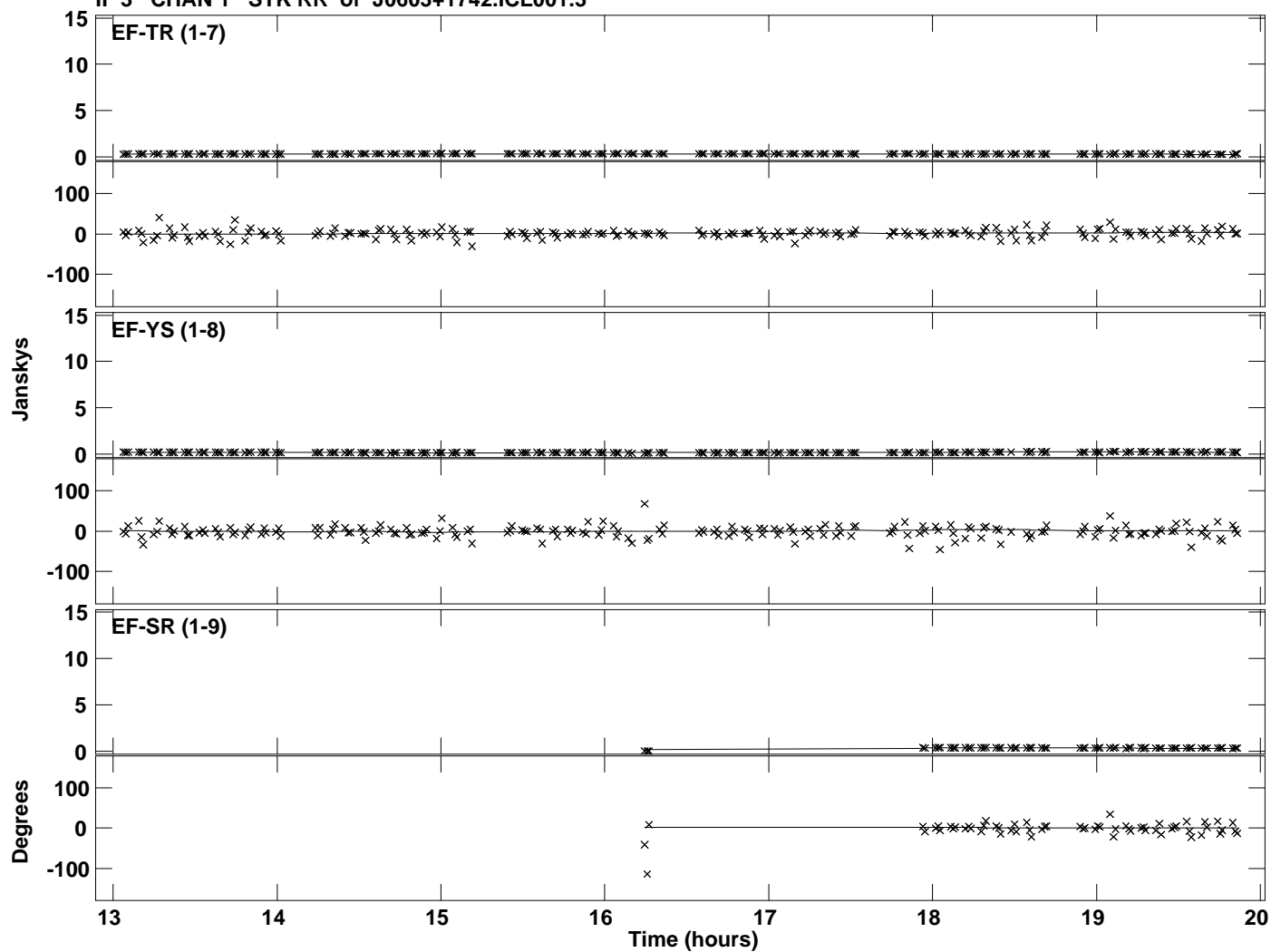
Plot file version 20 created 20-MAY-2016 12:09:20
Amplitude and Phase vs Time for J0603+1742.MULTI.1 Vect aver. CL # 3
IF 2 CHAN 1 STK RR of J0603+1742.ICL001.3



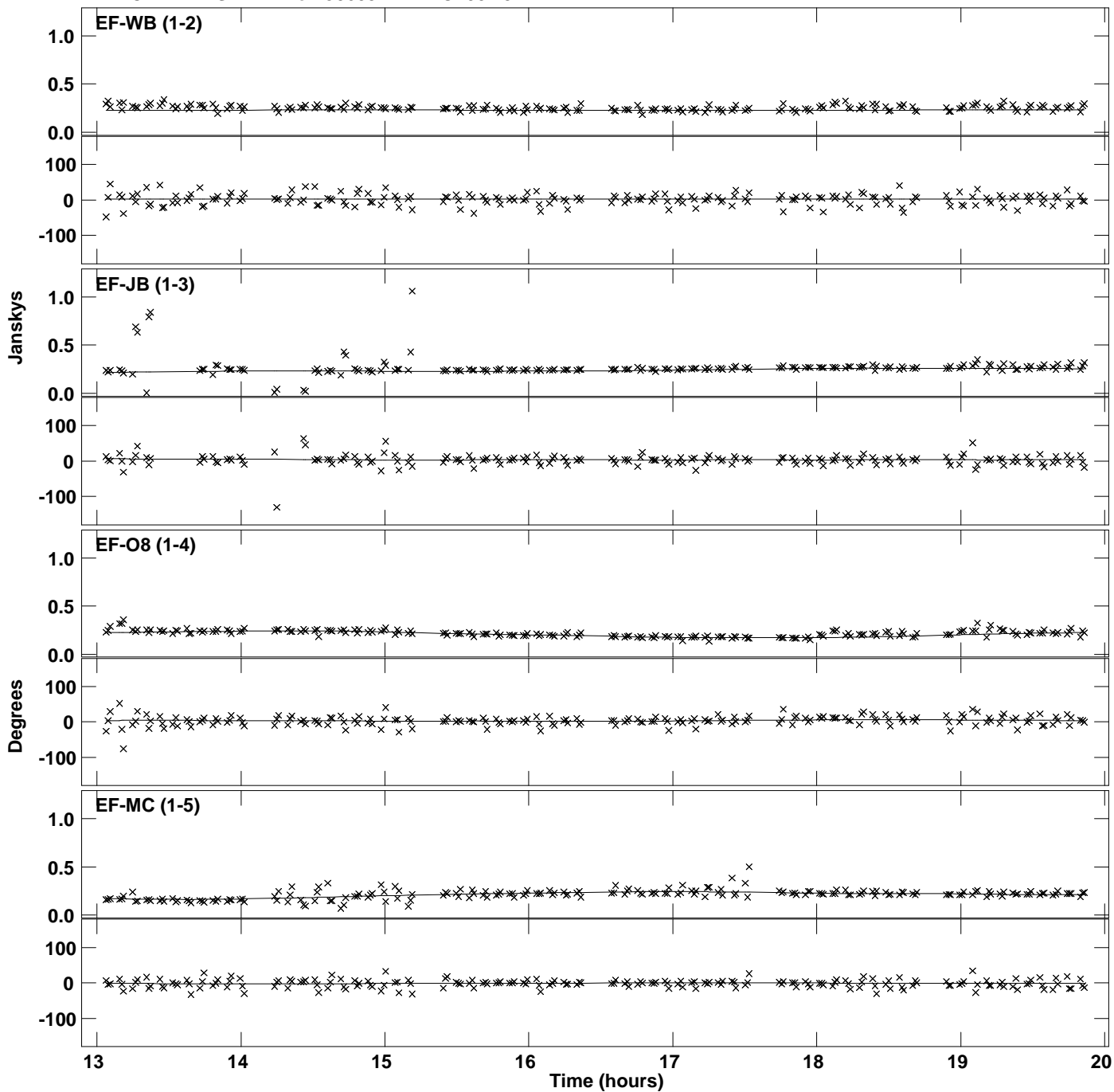
Plot file version 21 created 20-MAY-2016 12:09:20
Amplitude and Phase vs Time for J0603+1742.MULTI.1 Vect aver. CL # 3
IF 3 CHAN 1 STK RR of J0603+1742.ICL001.3



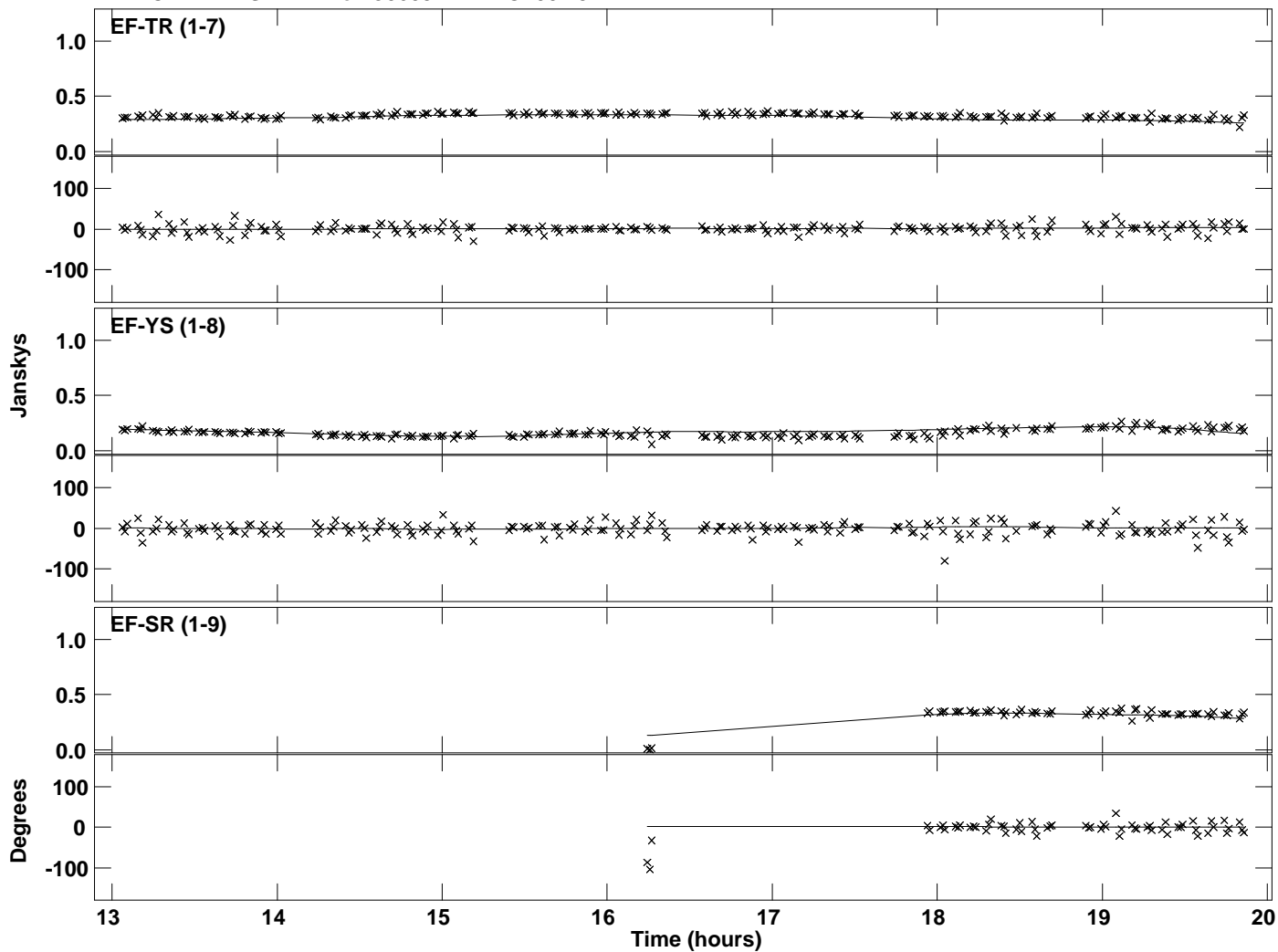
Plot file version 22 created 20-MAY-2016 12:09:20
Amplitude and Phase vs Time for J0603+1742.MULTI.1 Vect aver. CL # 3
IF 3 CHAN 1 STK RR of J0603+1742.ICL001.3



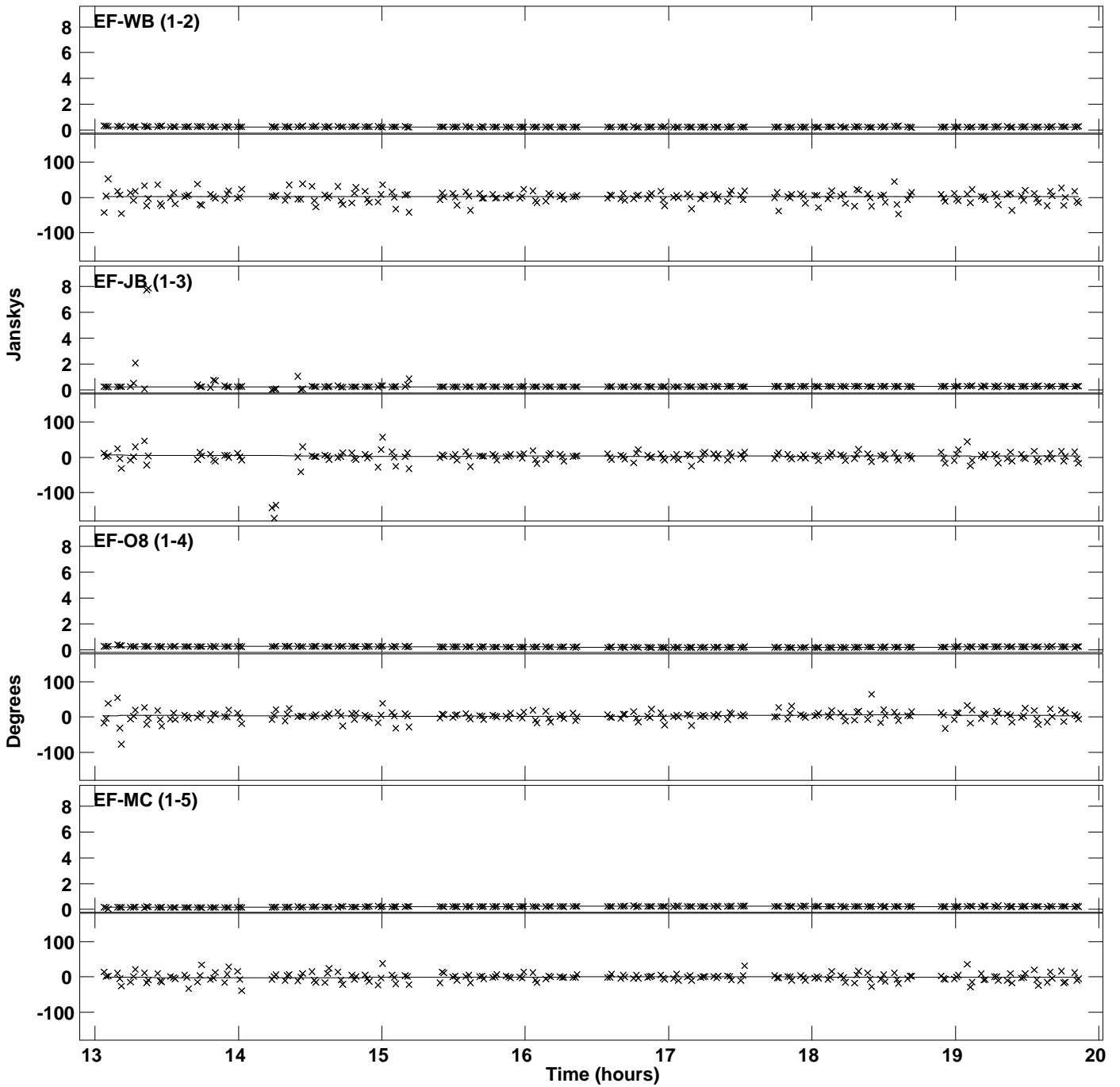
Plot file version 23 created 20-MAY-2016 12:09:21
Amplitude and Phase vs Time for J0603+1742.MULTI.1 Vect aver. CL # 3
IF 4 CHAN 1 STK RR of J0603+1742.ICL001.3



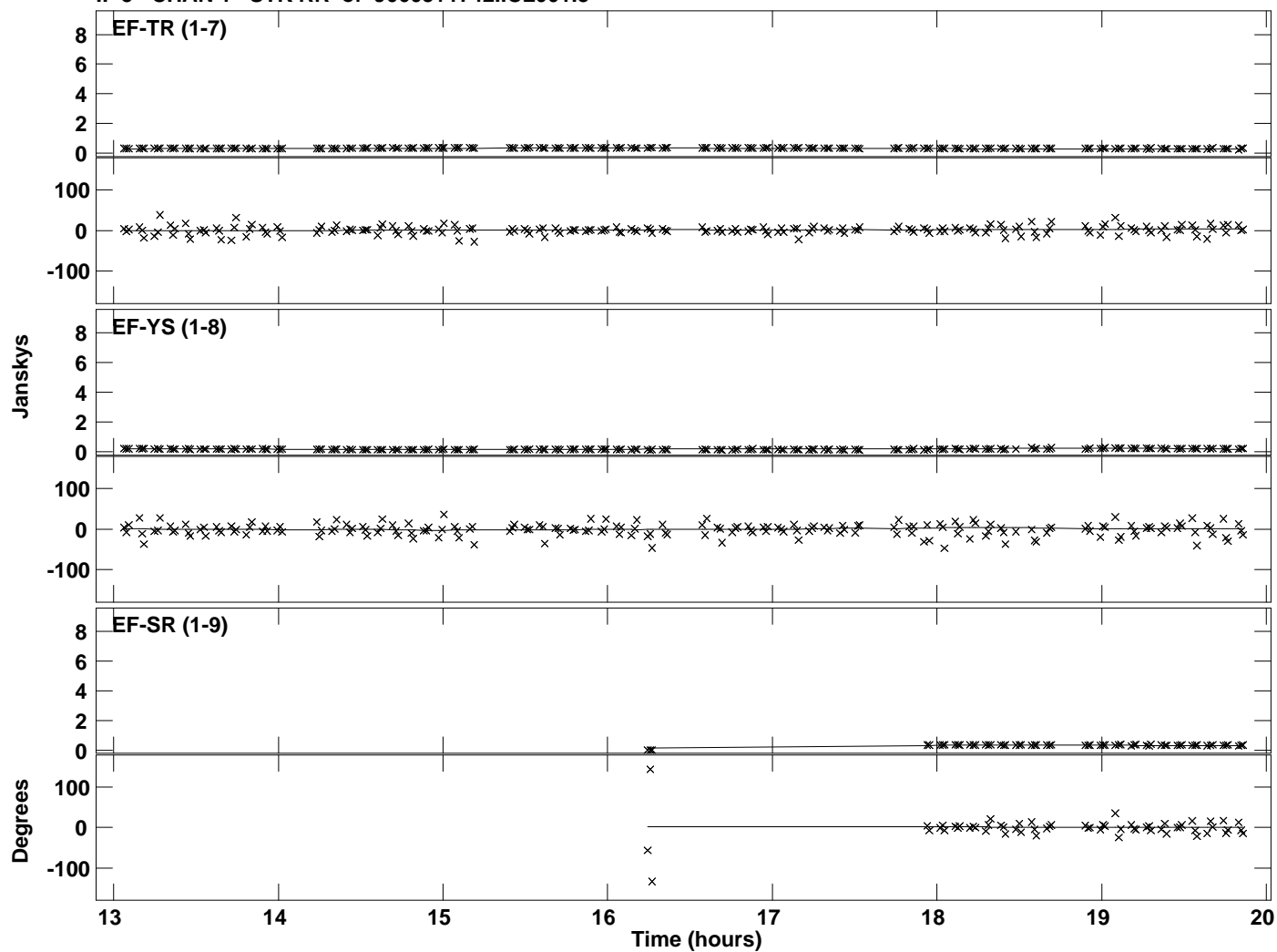
Plot file version 24 created 20-MAY-2016 12:09:21
Amplitude and Phase vs Time for J0603+1742.MULTI.1 Vect aver. CL # 3
IF 4 CHAN 1 STK RR of J0603+1742.ICL001.3



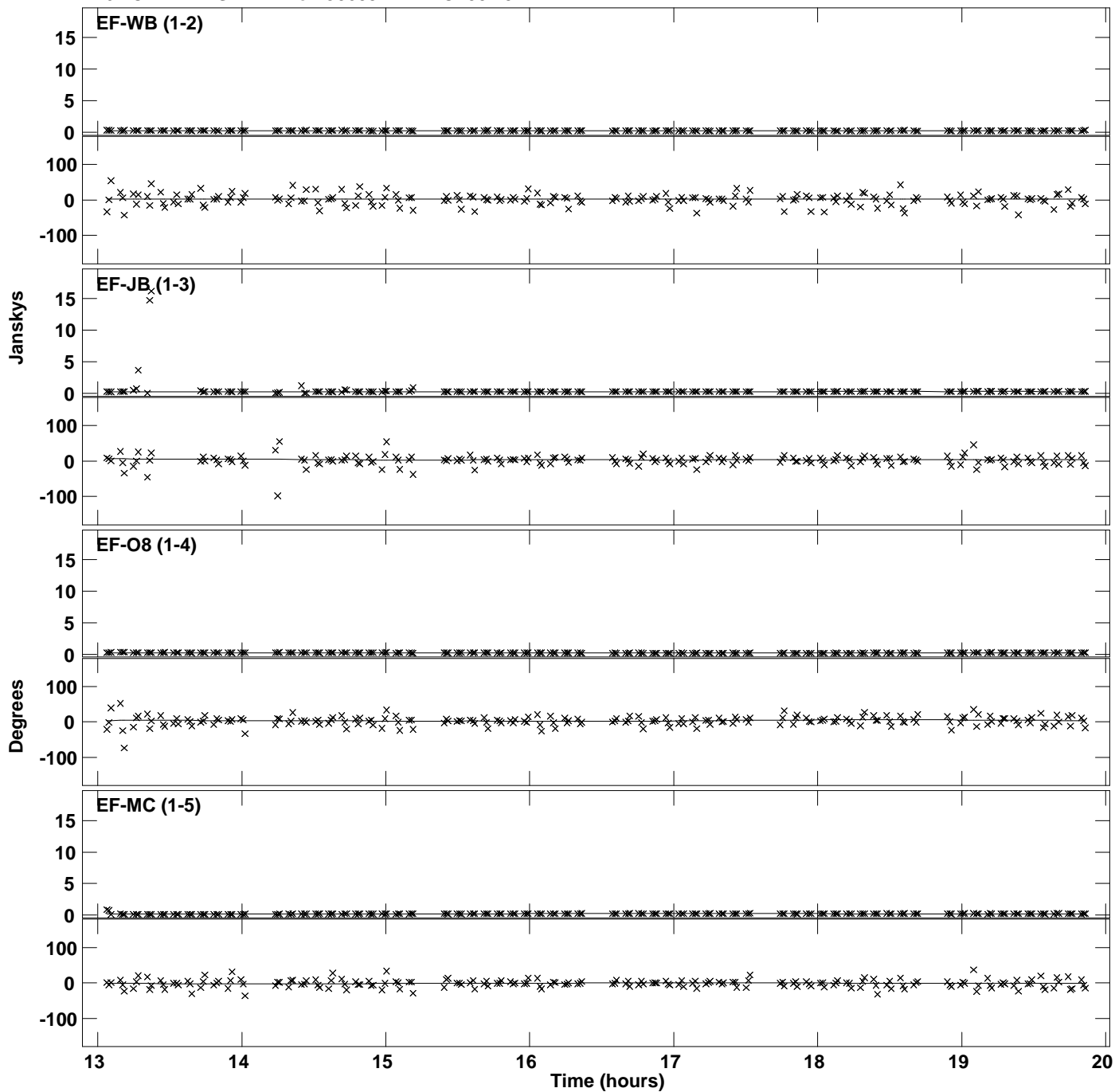
Plot file version 25 created 20-MAY-2016 12:09:21
Amplitude andPhase vs Time for J0603+1742.MULTI.1 Vect aver. CL # 3
IF 5 CHAN 1 STK RR of J0603+1742.ICL001.3



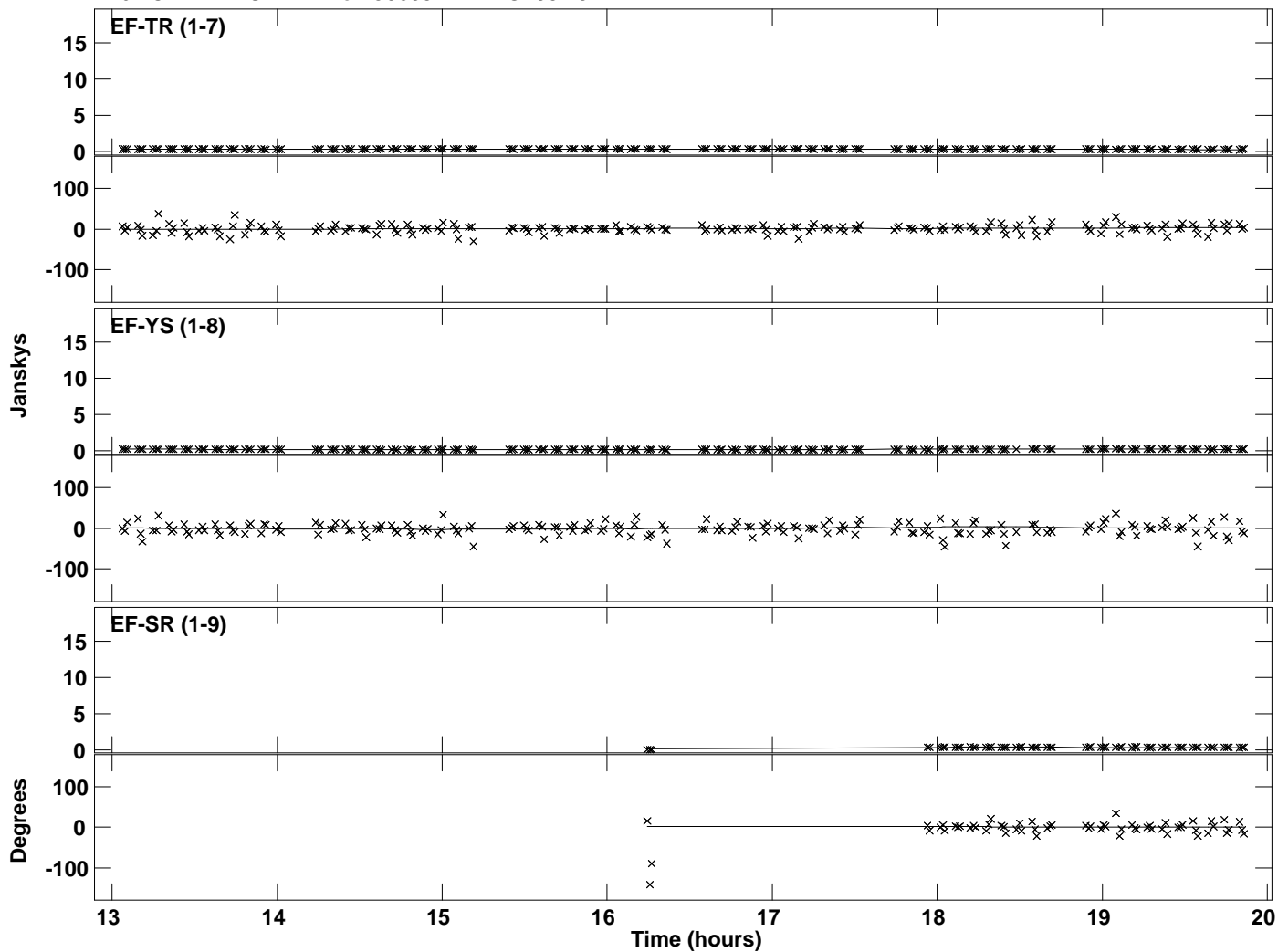
Plot file version 26 created 20-MAY-2016 12:09:21
Amplitude andPhase vs Time for J0603+1742.MULTI.1 Vect aver. CL # 3
IF 5 CHAN 1 STK RR of J0603+1742.ICL001.3



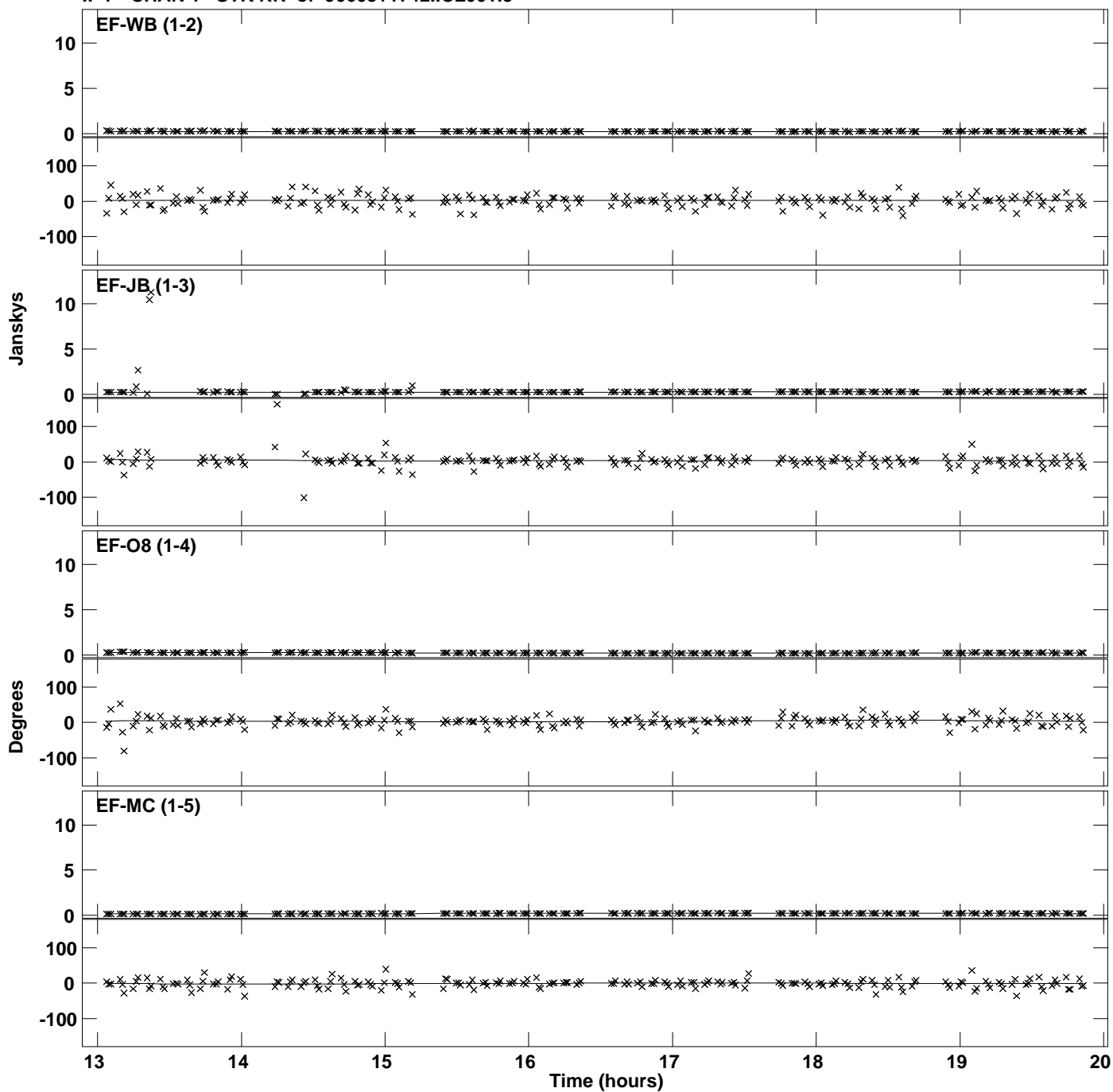
Plot file version 27 created 20-MAY-2016 12:09:22
Amplitude and Phase vs Time for J0603+1742.MULTI.1 Vect aver. CL # 3
IF 6 CHAN 1 STK RR of J0603+1742.ICL001.3



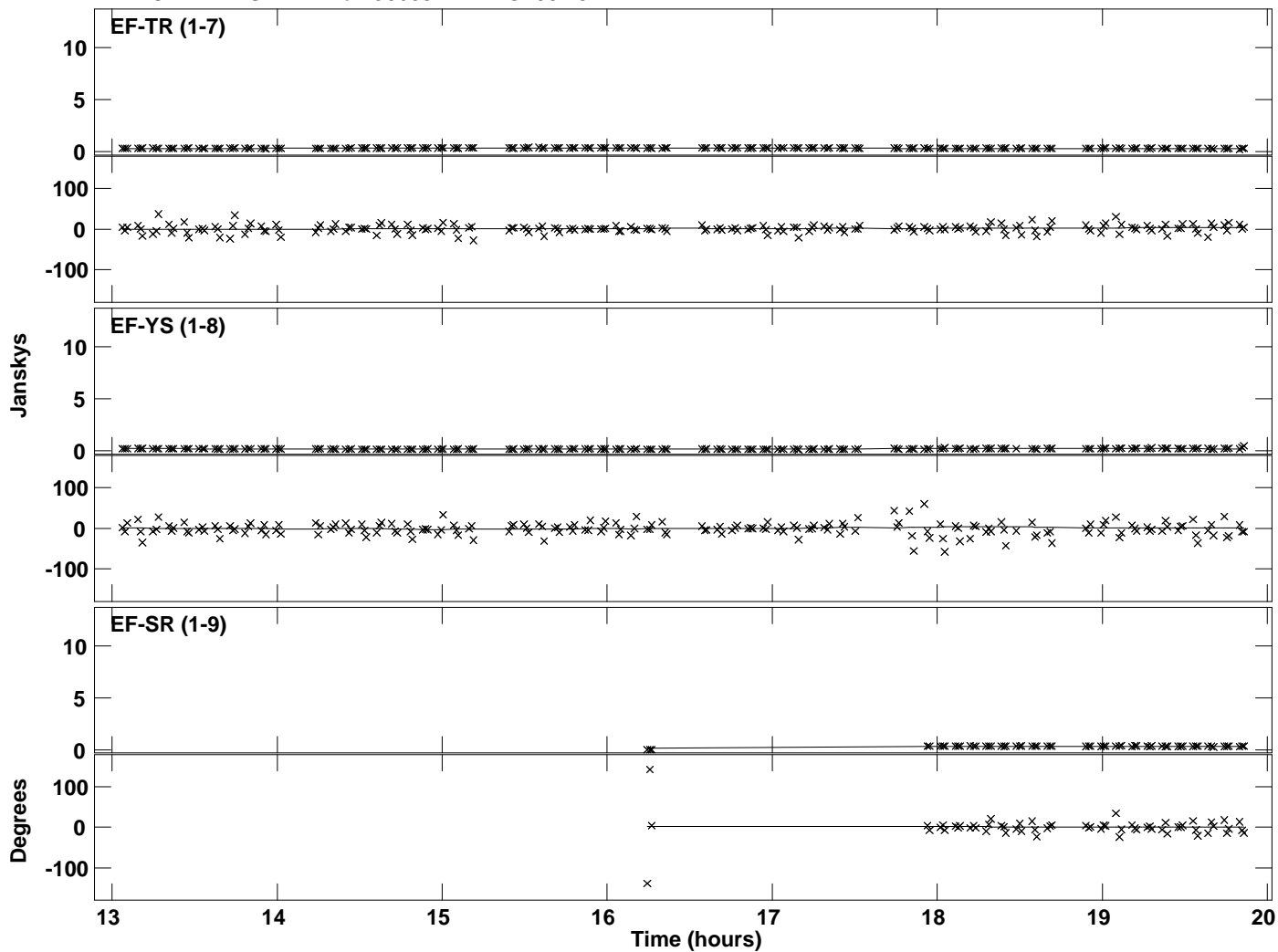
Plot file version 28 created 20-MAY-2016 12:09:22
Amplitude and Phase vs Time for J0603+1742.MULTI.1 Vect aver. CL # 3
IF 6 CHAN 1 STK RR of J0603+1742.ICL001.3



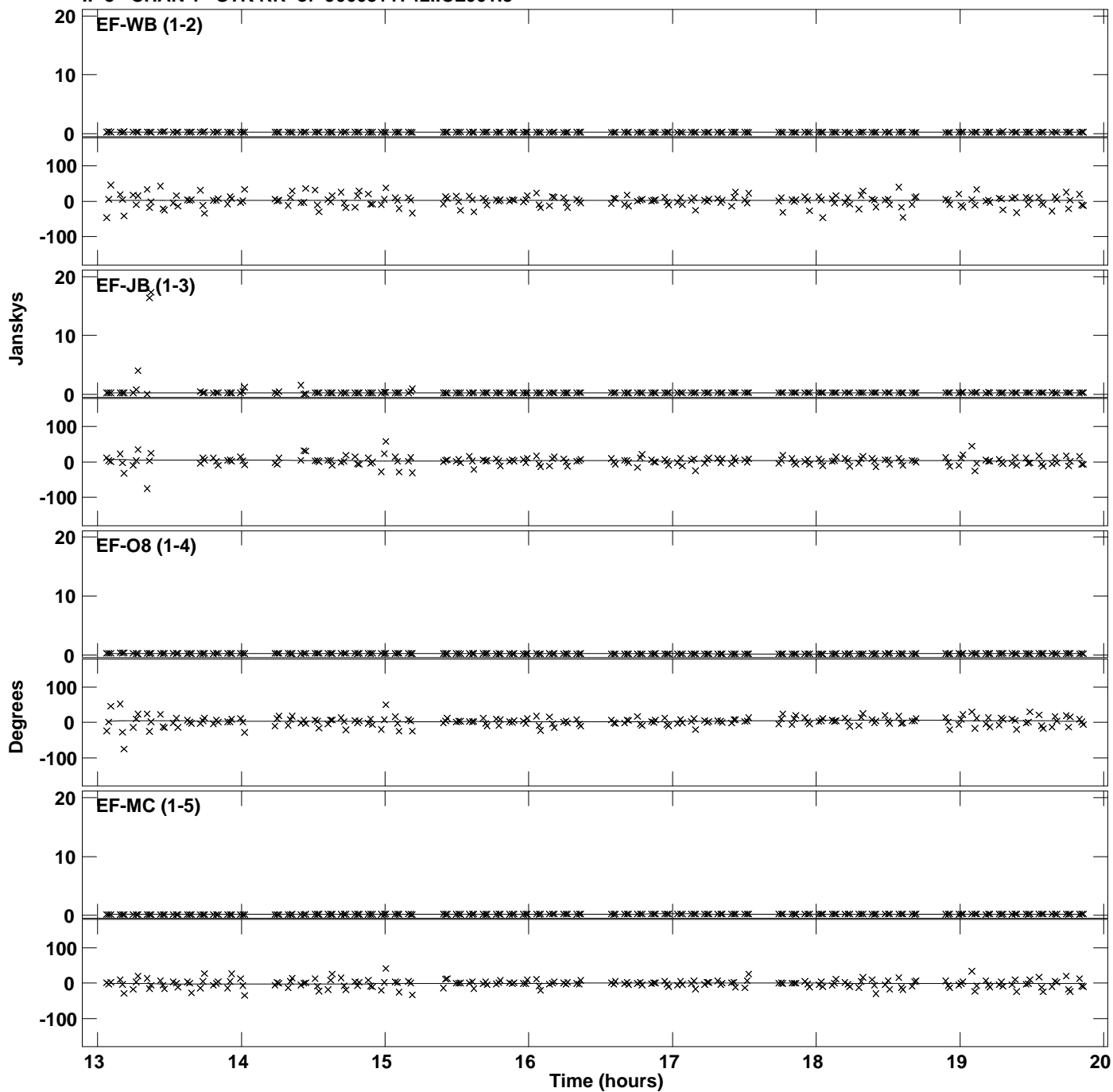
Plot file version 29 created 20-MAY-2016 12:09:22
Amplitude and Phase vs Time for J0603+1742.MULTI.1 Vect aver. CL # 3
IF 7 CHAN 1 STK RR of J0603+1742.ICL001.3



Plot file version 30 created 20-MAY-2016 12:09:22
Amplitude andPhase vs Time for J0603+1742.MULTI.1 Vect aver. CL # 3
IF 7 CHAN 1 STK RR of J0603+1742.ICL001.3



Plot file version 31 created 20-MAY-2016 12:09:23
Amplitude and Phase vs Time for J0603+1742.MULTI.1 Vect aver. CL # 3
IF 8 CHAN 1 STK RR of J0603+1742.ICL001.3



Plot file version 32 created 20-MAY-2016 12:09:23
Amplitude and Phase vs Time for J0603+1742.MULTI.1 Vect aver. CL # 3
IF 8 CHAN 1 STK RR of J0603+1742.ICL001.3

